

## **FIGURES**

REPORTING

ENVIRONMENTAL MONITORING

MONITORING AND AUDIT

MITIGATION

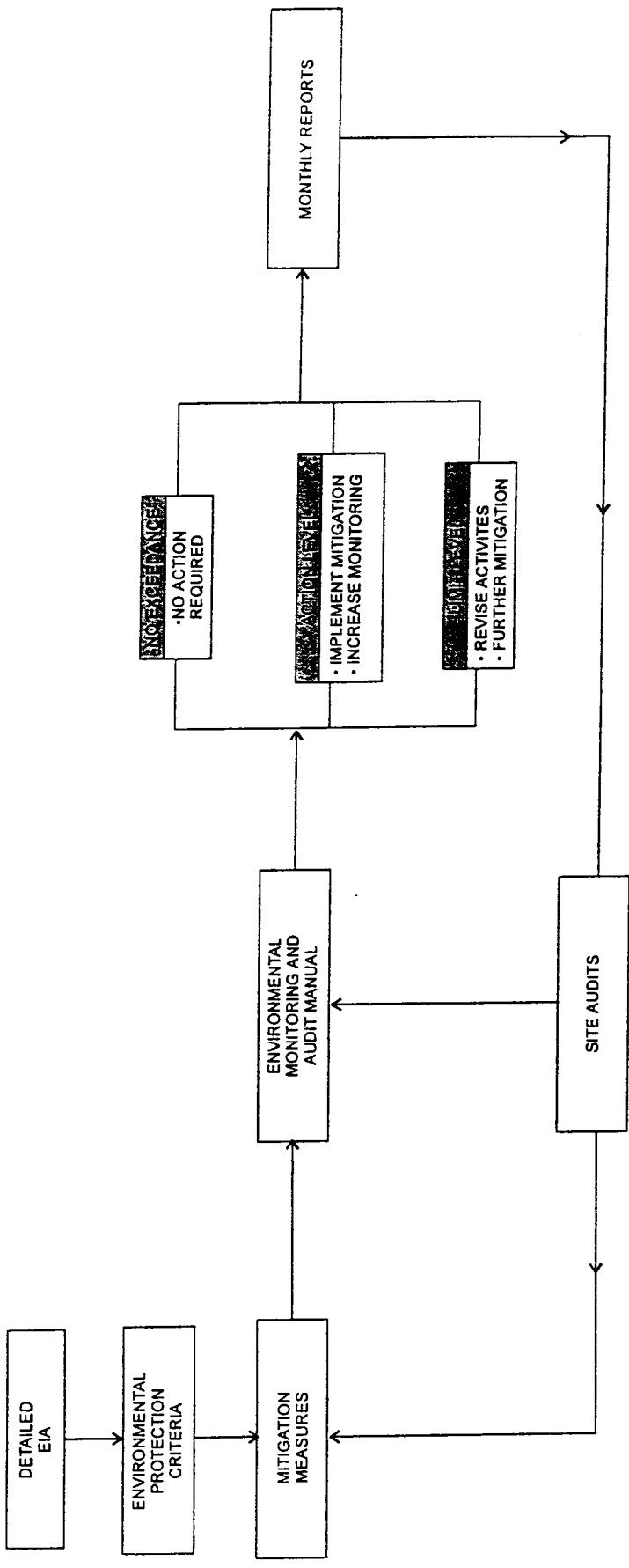
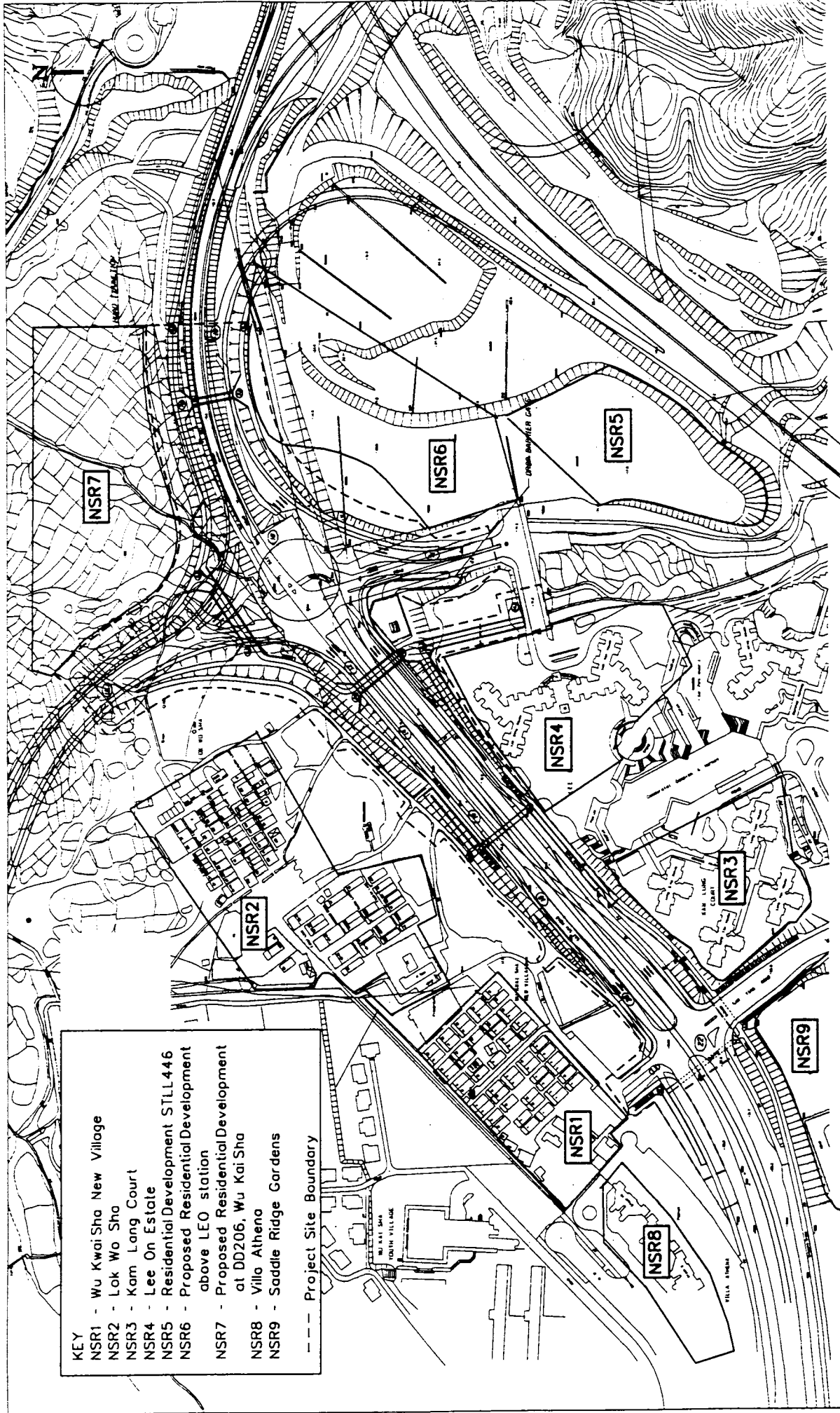
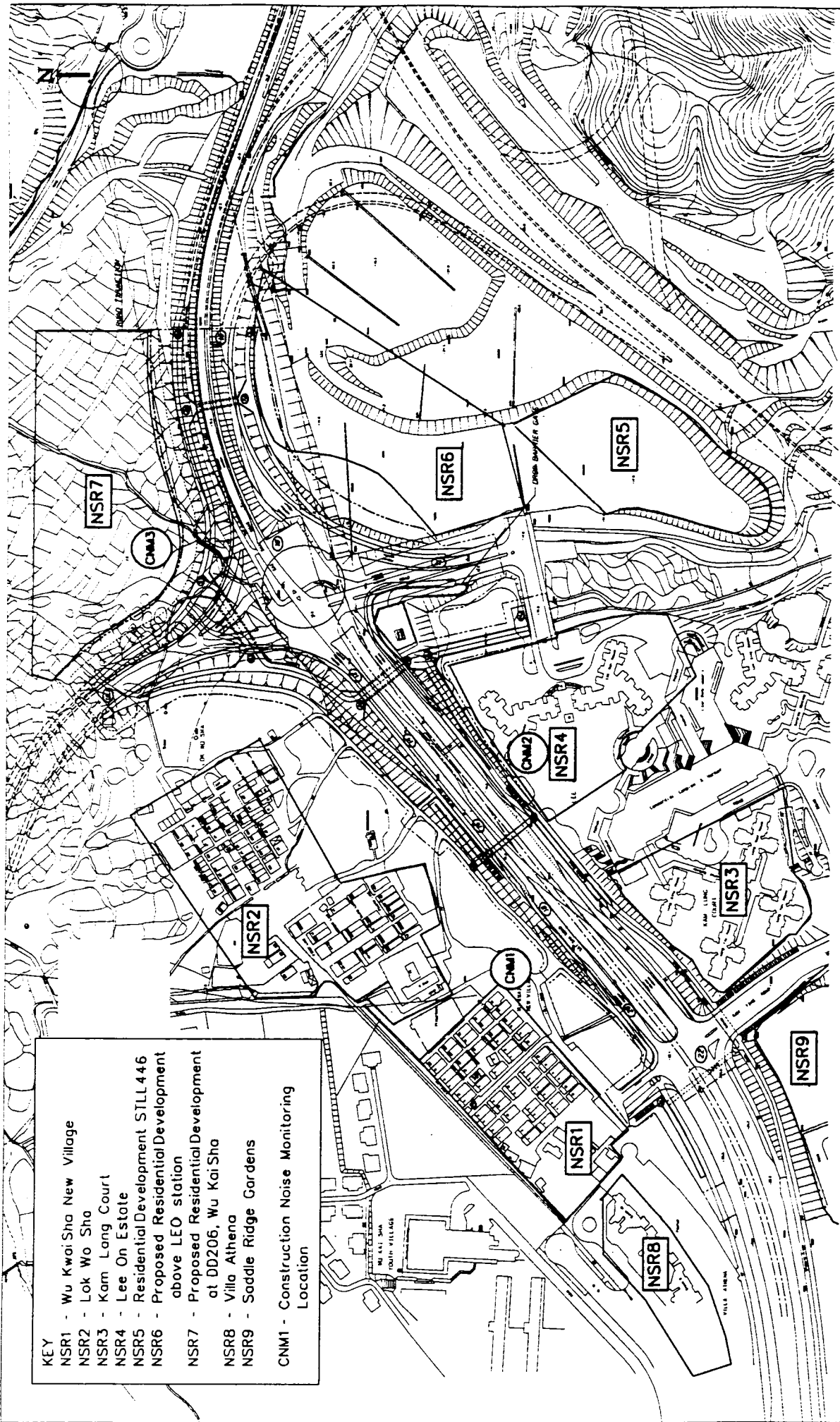


FIGURE No. 1

SCALE: DATE: JAN 99

IMPLEMENTATION OF MITIGATION AND ENVIRONMENTAL MONITORING AND AUDIT PROGRAMME



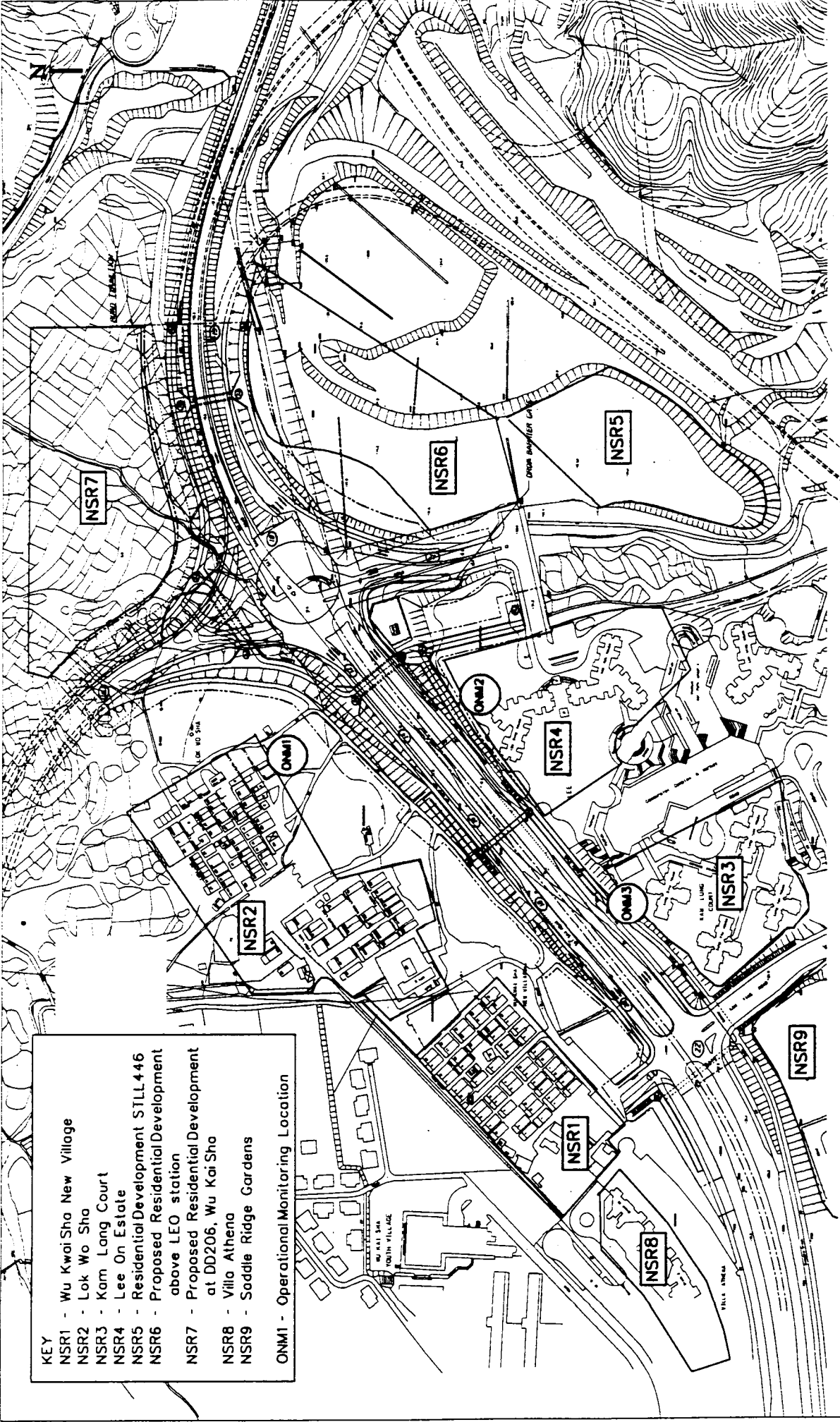


- KEY**
- NSR1 - Wu Kai Sha New Village
  - NSR2 - Lok Wo Sha
  - NSR3 - Kam Long Court
  - NSR4 - Lee On Estate
  - NSR5 - Residential Development STILL 446
  - NSR6 - Proposed Residential Development above LEO station
  - NSR7 - Proposed Residential Development at DD206, Wu Kai Sha
  - NSR8 - Villa Athena
  - NSR9 - Saddle Ridge Gardens
  - CNM1 - Construction Noise Monitoring Location

MAINSELL CONSULTANTS ASIA LTD  
 茂德工程顧問有限公司  
 DATE: JAN 99  
 SCALE: 1 : 3800  
 FIGURE NO. 3a

© COPYRIGHT RESERVED  
 版權所有

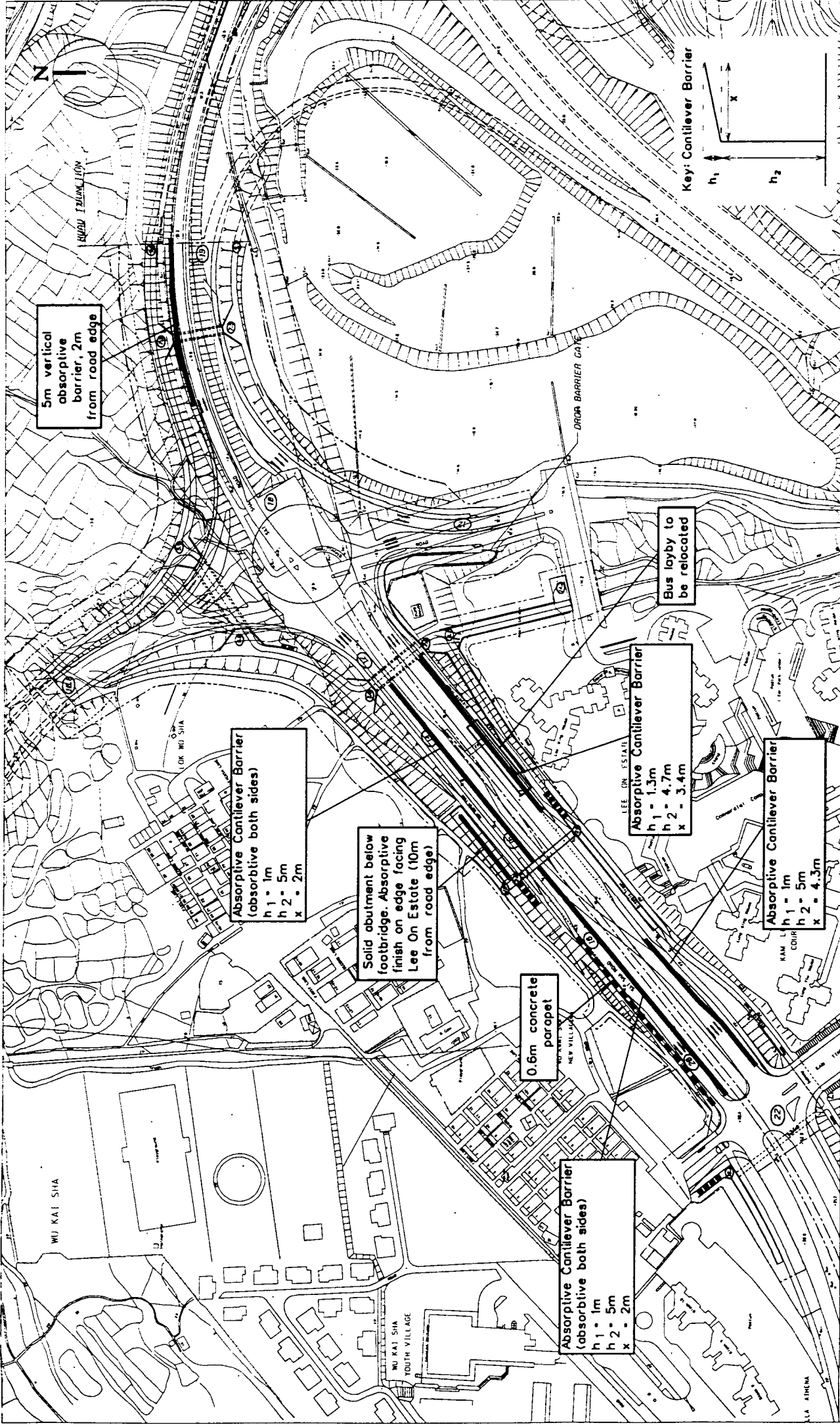
CONSTRUCTION NOISE MONITORING STATIONS



- KEY**
- NSR1 - Wu Kwai Sha New Village
  - NSR2 - Lok Wo Sha
  - NSR3 - Kam Lang Court
  - NSR4 - Lee On Estate
  - NSR5 - Residential Development STILL 446
  - NSR6 - Proposed Residential Development above LEO station
  - NSR7 - Proposed Residential Development at DD206, Wu Kai Sha
  - NSR8 - Villa Athena
  - NSR9 - Saddle Ridge Gardens
  - ONM1 - Operational Monitoring Location

OPERATIONAL NOISE MONITORING STATIONS

© COPYRIGHT RESERVED  
圖則 版權 保留



5m vertical absorptive barrier, 2m from road edge

Absorptive Cantilever Barrier (absorptive both sides)  
h1 = 1m  
h2 = 5m  
x = 2m

Solid abutment below footbridge. Absorptive finish on edge facing Lee On Estate (10m from road edge)

0.6m concrete parapet

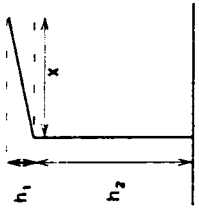
Absorptive Cantilever Barrier (absorptive both sides)  
h1 = 1m  
h2 = 5m  
x = 2m

Absorptive Cantilever Barrier  
h1 = 1.3m  
h2 = 4.7m  
x = 3.4m

Bus lobby to be relocated

Absorptive Cantilever Barrier  
h1 = 1m  
h2 = 5m  
x = 4.3m

Key: Cantilever Barrier



Note: that the dimensions of the noise barriers proposed in this assessment are subject to detailed design when suitable equivalent configurations may be considered to be more appropriate.

OPERATIONAL NOISE MITIGATION

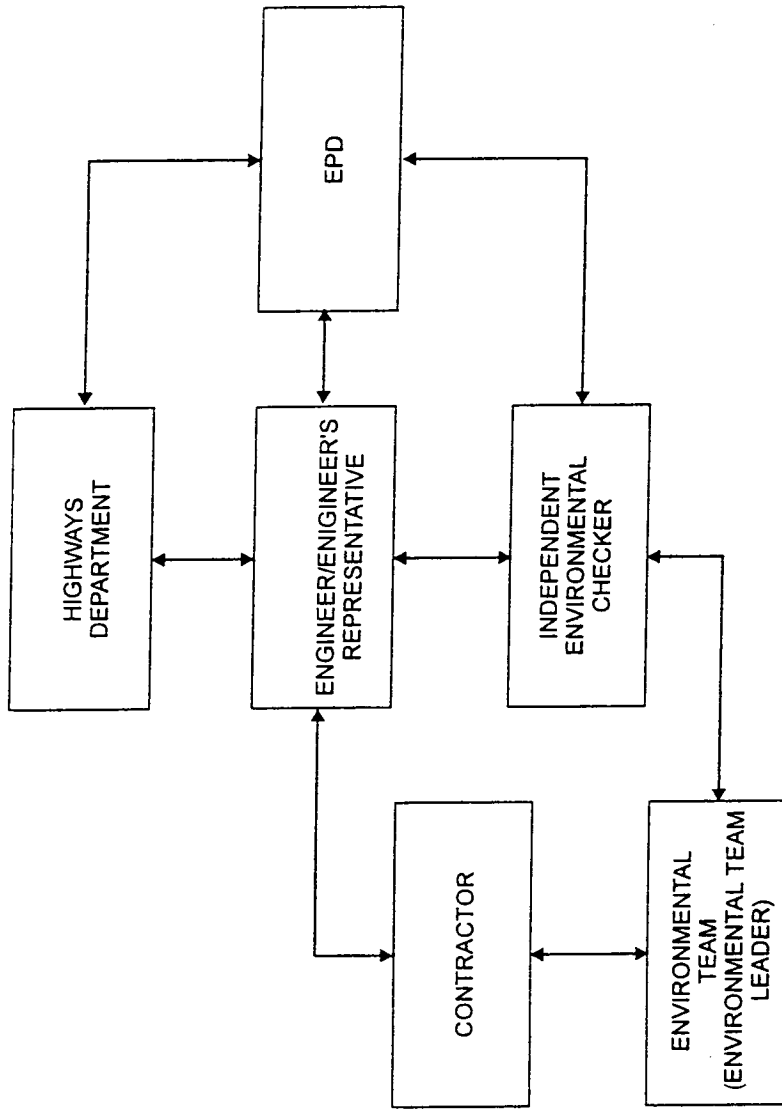


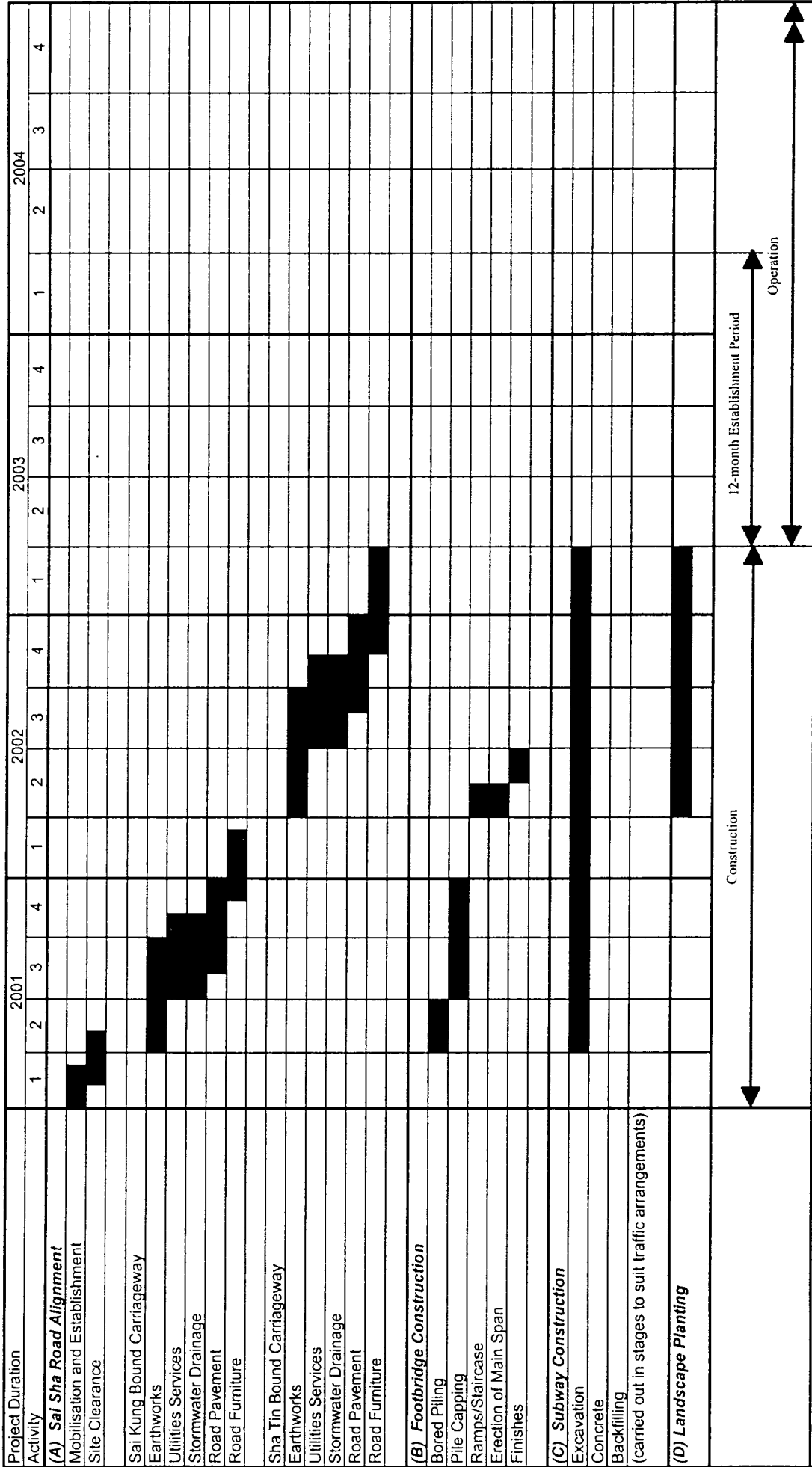
FIGURE No.

5

SCALE:

DATE: JAN 99

PROJECT ORGANISATION CHART



Construction

12-month Establishment Period

Operation

**ENVISAGED CONSTRUCTION PROGRAMME**

FIGURE NO. **6**

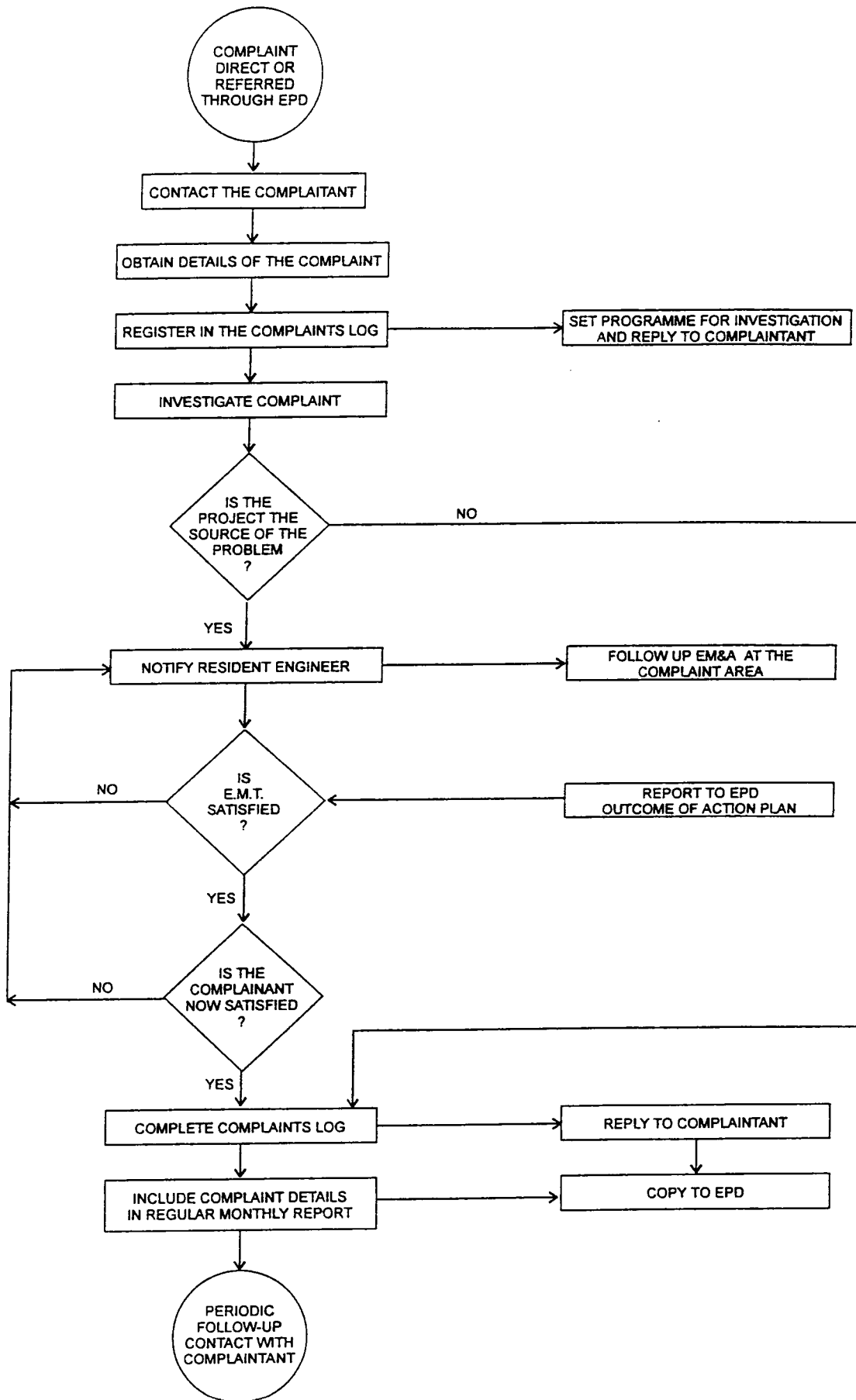
SCALE

DATE **JULY 99**

Date : 27/07/98

M A U N S E L L





COMPLAINTS PROCEDURE - ACTION FLOW CHART

FIGURE No.

7

SCALE:

DATE:

JAN 99

Maunsell