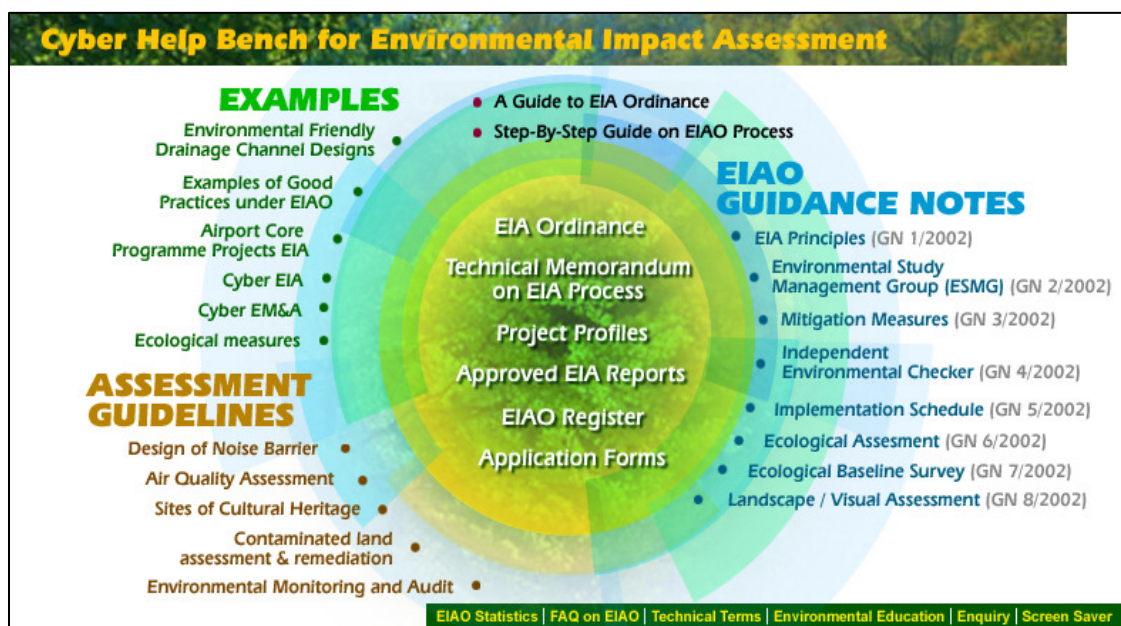


PART SEVEN – USEFUL RESOURCES AND GUIDELINES

7. USEFUL RESOURCES AND GUIDELINES

7.1 REFERENCES

Useful Resources are available at the Cyber Help Bench website
<http://www.epd.gov.hk/eia/hb/content/index.htm>



In short, they are:

- A Guide to the EIA Ordinance
- A Guide to the Environmental Impact Assessment (Appeal Board) Regulation
- Advertising Requirements and Public Inspection of Documents
- Modus Operandi of the Environmental Impact Assessment Subcommittee of the Advisory Council on the Environment
- General Notes for the Applications under the Environmental Impact Assessment Ordinance (Chapter 499)
- Assessment of the Impact on the Sites of Cultural Heritage in Environmental Impact Assessment Studies
- Basic Principles of Environmental Impact Assessment Process (GN 1/2002)
- The Role and Operation of Environmental Study Management Group (GN 2/2002)

- Flexibility and Enforceability of Mitigation Measures proposed in an EIA Report (GN 3/2002)
- The Role on Independent Environmental Checker (GN 4/2002)
- Implementation Schedule for Environmental Impact Assessment Process (GN 5/2002)
- Some Observations on Ecological Assessment From the Environmental Impact Assessment Ordinance Perspective (GN 6/2002)
- Ecological Baseline Survey for Ecological Assessment (GN 7/2002)
- Preparation of Landscape and Visual Impact Assessment Under the Environmental Impact Assessment Ordinance (GN 8/2002)

In addition, SEA Reports are available on our website through the link http://www.epd.gov.hk/epd/SEA/eng/completed_sea_reports.html

All the approved EIAs are displayed in the EIAO Register and on the EIAO website. An applicant can get useful resources and references from them, together with collecting relevant site-specific information. **Nonetheless, an applicant should take note that each project has case specific matter, and references can only be applied after professional consideration.**

7.2

APPROVED EIAs

A short recap of some of the approved EIAs in the EIAO Register that would be useful reference:

<u>Road Projects</u>	
EIA-082/2002	Shenzhen Western Corridor
EIA-078/2002	Deep Bay Link

<u>Railway Projects</u>	
EIA-071/2001	Sheung Shui to Lok Ma Chau Spur Line
EIA-053/2001	Modifications to MTRC Tsim Sha Tsui Station

Theme Park

EIA-041/2000 Construction of an International Theme Park in Penny's Bay of North Lantau together with its Essential Associated Infrastructures - Environmental Impact Assessment

Power Station

EIA-009/1998 1,800 MW Gas-fired Power Station at Lamma Extension

Sewerage Works

EIA-079/2002 Ngong Ping Sewage Treatment Works and Sewerage

EIA-074/2002 Yuen Long and Kam Tin Sewerage and Sewage Disposal Stage 1 Packages 1A-1T and 1B-1T - Kam Tin Trunk Sewerage Phase I and II

Reclamation Works and Future Landuses

EIA-040/2000 Northshore Lantau Development Feasibility Study - Environmental Impact Assessment

Decommissioning and Land Contamination Projects

EIA-072/2001 Decommissioning of Cheoy Lee Shipyard at Penny's Bay

EIA-064/2001 Demolition of Buildings and Structures in the Proposed Kennedy Town Comprehensive Development Area Site