

The Hongkong Electric Co Ltd  
香港電燈有限公司




ENVIRONMENTAL IMPACT ASSESSMENT (EIA) ORDINANCE, CAP. 499

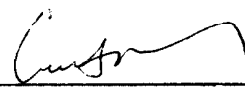
ENVIRONMENTAL PERMIT NO. EP-083/2000

LAMMA POWER STATION  
CONVERSION OF TWO EXISTING GAS TURBINES (GT5 & GT7) INTO A  
COMBINED CYCLE UNIT  
ENVIRONMENTAL MONITORING & AUDIT PROGRAMME  
AT OPERATIONAL PHASE

Report Title Monthly EM&A Report (July 2003)

Date 8 August 2003

Certified by   
(Mr. Chan Kwok-Fai,  
Environmental Team Leader)

Verified by   
(Nature & Technologies (HK) Ltd,  
Independent Environmental Checker)

## TABLE OF CONTENT

### EXECUTIVE SUMMARY

<b>1.</b>	<b>INTRODUCTION.....</b>	<b>1</b>
1.1	Background	1
1.2	Project Organisation	1
1.3	Summary of EM&A Requirements	2
<b>2.</b>	<b>AIR QUALITY.....</b>	<b>5</b>
2.1	Monitoring Requirements	5
2.2	Summary of Results And Observations	5
2.3	Progress of Existing Ambient Air Quality Network Review	6
<b>3.</b>	<b>WATER QUALITY MONITORING .....</b>	<b>7</b>
3.1	Monitoring Requirements	7
3.2	Summary of Results And Observations	7
3.3	Implementation Status on Thermal Plume Surveys	8
<b>4.</b>	<b>ENVIRONMENTAL AUDIT .....</b>	<b>9</b>
4.1	Review of Environmental Monitoring Procedures	9
4.2	Assessment of Environmental Monitoring Results	9
4.3	Status of Environmental Licensing and Permitting	10
4.4	Implementation Status of Environmental Mitigation Measures	10
4.5	Implementation Status of Event/Action Plans	11
4.6	Implementation Status of Environmental Complaint Handling Procedures	11
<b>5.</b>	<b>FUTURE KEY ISSUES.....</b>	<b>13</b>
5.1	Outage Plan for the coming 3 months	13
5.2	Key issues for the coming month	13
<b>6.</b>	<b>CONCLUSION.....</b>	<b>14</b>

### LIST OF TABLES

Table 2.1	Air Quality Monitoring Parameters and Frequency
Table 2.2	Monthly fuel data and generation output
Table 3.1	Water Quality Monitoring Parameters and Frequencies for GT57
Table 4.1	Summary of AL Level Exceedances on Monitoring Parameters
Table 4.2	Summary of Environmental Licensing and Permit Status
Table 4.3	Implementation Schedule
Table 4.4	Environmental Complaints / Enquiries Received in July 2003
Table 4.5	Outstanding Environmental Complaints / Enquiries Received Before

## **LIST OF FIGURES**

Figure 1.1 Location of GT57 Combined Cycle Unit

Figure 1.2 Organization Chart at Operational Phase

## **APPENDIX**

Appendix A Event/Action Plans

Appendix B Action and Limit Levels for Air Quality and Water Quality Monitoring

Appendix C Summary Results and Observations on Water Quality Monitoring

## EXECUTIVE SUMMARY

This is the July 2003 monthly Environmental Monitoring and Audit (EM&A) report for the Project "Operation of GT57 Combined Cycle Unit" prepared by the Environmental Team (ET). This report presents the results of impact monitoring on air quality and marine water quality for the said project in July 2003.

Air and water quality monitoring were performed. The results were checked against the established Action/Limit (AL) levels. The implementation status of the environmental mitigation measures, Event/Action Plan and environmental complaint handling procedures were also checked.

### Environmental Monitoring Works

All monitoring works, as mentioned in the EM&A manual (Operational phase), were performed during the operation of GT57 in the reporting period.

#### *Air Quality*

No exceedance of Action and Limit levels for air quality was recorded in the month.

#### *Water Quality*

No exceedance of Action and Limit levels for water quality was recorded in the month.

### Environmental Licensing and Permitting

Description	Permit/Licence No.	Valid Period		Issued To	Date of Issuance
		From	To		
Environmental Permit	EP-083/2000	04/12/2000	-	HEC	04/12/2000
Specified Processes Licence issued under APCO	L-7-002(4)	28/02/2003	24/09/2003 (Application for renewal submitted on 11/06/2003)	HEC	28/02/2003
WPCO discharge licence for L1-L8 and GT57	EP760/912/014651	30/08/2002	30/11/2004	HEC	30/08/2002

### Implementation Status of Environmental Mitigation Measures

Environmental mitigation measures were implemented in the reporting month.

### Environmental Complaints

No complaint against the Project was received in the reporting month.

## **Future key issues**

Key issues to be considered in the coming month include:

### *Air Impact*

- To monitor the water injection rate continuously.
- To monitor the fuel sulphur content of the LGO to be burnt in the combined cycle unit.

### *Water Impact*

- To continuously carry out the water quality monitoring for GT57 as required by the EM&A manual (Operational phase).

## **Concluding Remarks**

The environmental performance of the project was generally satisfactory.

## **1. INTRODUCTION**

### **1.1 Background**

The Environmental Team (hereinafter called the “ET”) was formed within the Hongkong Electric Co. Ltd (HEC) to undertake Environmental Monitoring and Audit for “Operation of GT57 Combined Cycle Unit” (hereinafter called the “Project”). Under the requirements of Section 5 of Environmental Permit EP-083/2000, an EM&A programme for impact environmental monitoring, as set out in the EM&A Manual (Operational Phase), is required to be implemented. In accordance with the EM&A Manual, environmental monitoring of air quality and water quality are required for the Project.

Figure 1.1 shows the location of the GT57 combined cycle unit. Making use of the open area between the existing gas turbines at the south western corner of Lamma Power Station, a steam-cycle bottoming system was installed to recover the waste heat from the exhaust gas of GT5 and GT7 so as to produce an extra output of 115MW and form a combined cycle unit of a gross output of 365MW. The exhaust gas after passing through the heat recovery steam generator (HRSG) is discharged to the atmosphere through the existing stacks of 80m height. Cooling water required for the steam-cycle bottoming system is supplied from additional C.W. pumps and returned to the existing No.1 C.W. outfall for discharge to the sea. As a result of the additional power output generated by the steam cycle, there is a substantial gain in the overall thermal efficiency from about 30% (in a simple cycle GT) to 46%(in a combined cycle GT).

The additional equipment installed for the project include:

- 2 numbers of heat recovery steam generators;
- 1 steam turbine building to house the steam turbine and auxiliaries;
- Generator and unit transformer; and
- 2 numbers of additional C.W. pumps.

This report summarizes the environmental monitoring and audit work for the Project for the month of July 2003.

### **1.2 Project Organisation**

The management structure to oversee the Project, as effective from 1 July 2003, includes the following:

- Environmental Protection Department (The Authority);
- General Manager (Management Services)(The official contact person between HEC and EPD);
- Environmental Team Leader (ET);

- Independent Environmental Checker (IEC);
- Environmental Team (ET).

The organization chart for the Operation EM&A programme is shown in Figure 1.2.

### **1.3 Summary of EM&A Requirements**

The EM&A program requires environmental monitoring for air and water quality. The EM&A monitoring work for air quality and water quality are described in Sections 2 and 3 respectively.

The following environmental audits are summarized in Section 4 of the report:

- Environmental monitoring results;
- The status of environmental licensing and permits for the Project;
- The implementation status of environmental protection and pollution control / mitigation measures.

The future key issues for the Project will be reported in Section 5 of this report.

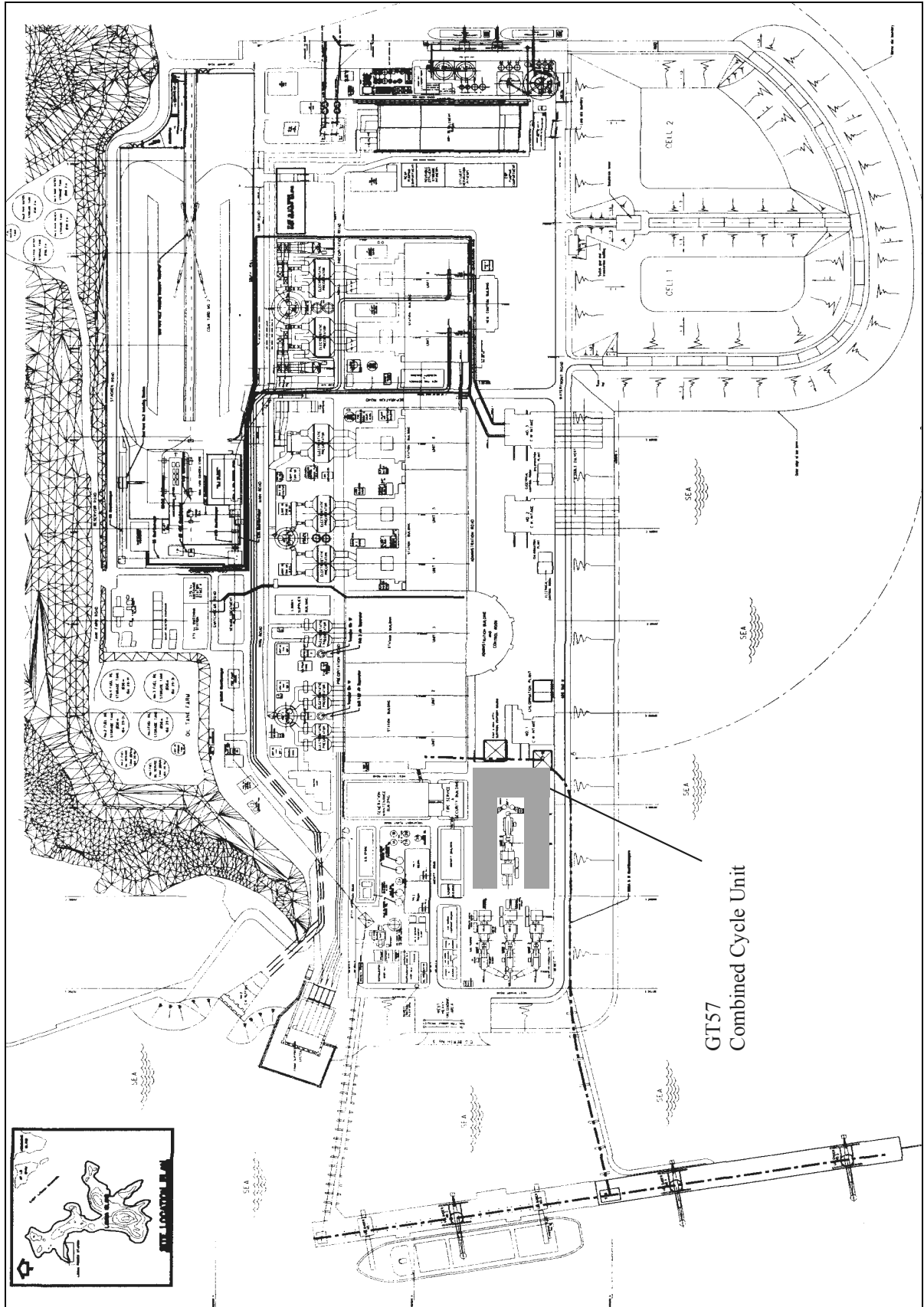


Figure 1.1 Location of GT57 Combined Cycle Unit



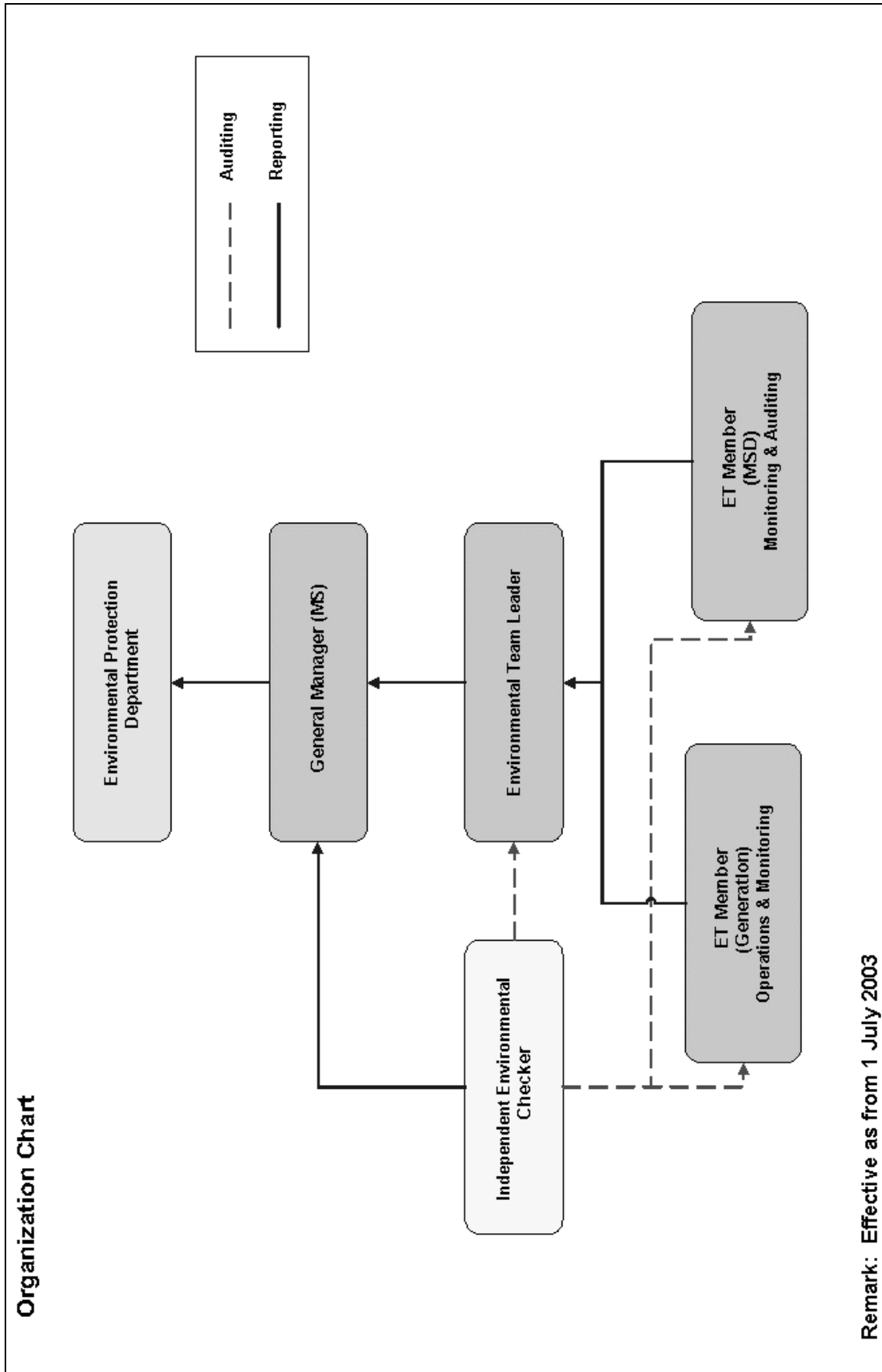


Figure 1.2 Organization Structure at Operational Phase of GT57 combined cycle unit

## 2. AIR QUALITY

### 2.1 Monitoring Requirements

In accordance with the EM&A manual (Operational Phase) for GT57 and the requirements stipulated in the Specified Processes Licence issued under Air Pollution Control Ordinance, water injection rates, sulphur content of fuel burnt and stack NOx emission are monitored. Various operation parameters (viz generation output and fuel consumption) are reported. Water injection rates and stack NOx sampling data were checked against the Action/Limit Levels as determined in the Baseline Monitoring Report shown in Appendix B. The monitoring frequency of various parameters are shown in table 2.1 below:

Table 2.1 Air Quality Monitoring Parameters and Frequency

Parameter	Frequency
Stack NOx	Once every two years
Hourly Average Water Injection Rate	Continuous, when GT57 is operating
Sulphur content of fuel	Monthly

### 2.2 Summary of Results And Observations

Monitoring of various parameters as mentioned in section 2.1 above was conducted during the operation of GT57 in the reporting month. A monthly summary of fuel data and Generation Output, as per the requirement stipulated in the SP licence, is shown below:

Table 2.2 Monthly fuel data and generation output

	GT5	GT7	Steam Turbine	Total
Generation Output (MWH)	1608.4	1222.4	1288.0	4118.8
Fuel Consumption (MT)	503.4	374.8	-	878.2
Sulphur content of Fuel Burnt (%)	0.18	0.18	-	-

	GT6
Sulphur content of Fuel Burnt (%)	0.18

*Summary of Action/Limit Level Alarm in July 2003*

No exceedance of hourly average water injection rate Action/Limit Level was recorded in the month.

**2.3 Progress of Existing Ambient Air Quality Network Review**

The review of the existing HEC ambient air quality network is in progress. No suitable site has been identified for the installation of an ambient air quality monitoring station at Cheung Chau as of the date of this report.

### 3. WATER QUALITY MONITORING

#### 3.1 Monitoring Requirements

In accordance with the EM&A manual (Operational Phase) for GT57, the monitoring requirements are subject to change based on the finalised discharge licence for L1-L8 & GT57 under the Water Pollution Discharge Ordinance (WPCO). The monitoring requirements for the EM&A work should strictly follow the varied WPCO discharge licence, which was received from EPD on 25/09/2002. The parameters as stated in table 3.1 were monitored and checked against the Action/Limit Levels as given in Appendix B.

Table 3.1 Water Quality Monitoring Parameters and Frequencies for GT57

Item	Parameters	Frequency*
1	Cooling Water Temperature	Daily
2	Cooling Water Temperature Rise	Daily
3	Total Residual Chlorine	Bi-weekly
4	Grease & Oil from Oil Free Drain	Monthly
5	Temperature of Blowdown Effluent (HRSG)	At least twice per year
6	Suspended Solids from Blowdown Effluent (HRSG)	At least twice per year
7	Grease & Oil from Blowdown Effluent (HRSG)	At least twice per year
8	Scum of foam in ambient water	Daily

Remark: \* monitoring will only be carried out when there is operation of the GT57.

#### 3.2 Summary of Results And Observations

Monitoring of various parameters as listed in table 3.1 above were carried out during the operation of GT57 in the reporting month. A monthly summary of the data is shown in Appendix C.

The data recorded for the monitoring parameters were all below their corresponding Action/Limit Levels. No AL level exceedance was recorded in the reporting month. Action was taken to disperse foam observed at the South-West and North-West corners of the Power Station. There was no foam present within 500 meters of Hung Sing Ye

Beach in the reporting month. Details of the foam observation report are also given in Appendix C. The effluent quality was generally satisfactory.

### **3.3 Implementation Status on Thermal Plume Surveys**

No thermal plume survey was carried out in the reporting month. The thermal plume survey would only be conducted under the conditions stipulated in the proposal on the programme and methodologies of thermal plume attached in the EM&A manual (Operational Phase).

## 4. ENVIRONMENTAL AUDIT

### 4.1 Review of Environmental Monitoring Procedures

The environmental monitoring procedures were regularly reviewed by the Environmental Team. No modification to the existing monitoring procedures was recommended.

### 4.2 Assessment of Environmental Monitoring Results

#### *Monitoring results for Air Quality and Water Quality*

The environmental monitoring results for Air Quality and Water Quality in July 2003 presented in sections 2 and 3 respectively are summarized in Table 4.1.

Table 4.1 Summary of AL Level Exceedances on Monitoring Parameters

Item	Parameter Monitored	Monitoring Period	No. of Exceedances In		Event/Action Plan Implementation Status and Results
			Action Level	Limit Level	
Air					
1	Hourly Average Water Injection Rate	01/07/03-31/07/03	0	0	
2	Stack NOx	01/07/03-31/07/03	N/A	N/A	No stack NOx sampling was scheduled in the reporting month
Water					
1	Cooling Water Temperature	01/07/03-31/07/03	0	0	
2	Cooling Water Temperature Rise	01/07/03-31/07/03	0	0	
3	Total Residual Chlorine	01/07/03-31/07/03	0	0	
4	Grease & Oil from Oil Free Drain	01/07/03-31/07/03	0	0	
5	Temperature of Blowdown Effluent	01/07/03-31/07/03	0	0	

Item	Parameter Monitored	Monitoring Period	No. of Exceedances In		Event/Action Plan Implementation Status and Results
			Action Level	Limit Level	
6	Suspended Solids from Blowdown Effluent	01/07/03-31/07/03	0	0	
7	Grease & Oil from Blowdown Effluent	01/07/03-31/07/03	0	0	
8	Inspection of Scum/Foam in ambient water	01/07/03-31/07/03	0	0	

### 4.3 Status of Environmental Licensing and Permitting

All permits/licenses obtained as of July 2003 are summarised in Table 4.2.

Table 4.2 Summary of Environmental Licensing and Permit Status

Description	Permit / Licence No.	Valid Period		Status
		From	To	
Environmental Permit	EP-083/2000	04/12/2000	-	HEC
Specified Processes Licence issued under APCO	L-7-002(4)	28/02/2003	24/09/2003 (Application for renewal submitted on 11/06/2003)	Varied licence, covering GT57, received in early March 2003
WPCO discharge licence for L1-L8 and GT57	EP760/912/0146 5I	30/08/2002	30/11/2004	Varied licence, covering GT57, received on 25 September 2002

### 4.4 Implementation Status of Environmental Mitigation Measures

Mitigation measures detailed in the permits and the EM&A Manual (Operational Phase) are required to be implemented. An updated summary of the Environmental Mitigation Implementation Schedule (EMIS) is presented below:

Table 4.3 Implementation Schedule

Project Profile Ref.	Mitigation Measures	Implementation Status
19	Use of 0.2% sulphur content for oil-firing of the conversion unit.	Complied
19	Use of acoustic enclosures around major noise sources	Complied

#### 4.5 Implementation Status of Event/Action Plans

The Event/Action Plans for air quality and water quality extracted from the EM&A Manual (Operational Phase) are presented in Appendix A.

As no action/limit level exceedance was recorded, no action has been devised.

#### 4.6 Implementation Status of Environmental Complaint Handling Procedures

There was no complaint / enquiry on environmental issues for the Project received in July 2003.

Table 4.4 Environmental Complaints / Enquiries Received in July 2003

Case Reference / Date, Time Received / Date, Time Concerned	Descriptions /Actions Taken	Conclusion / Status
Nil	N/A	N/A



Table 4.5 Outstanding Environmental Complaints / Enquiries Received Before

Case Reference / Date, Time Received / Date, Time Concerned	Descriptions /Actions Taken	Conclusion / Status
Nil	N/A	N/A

## **5. FUTURE KEY ISSUES**

### **5.1 Outage Plan for the coming 3 months**

No major outage plan was scheduled for the next 3 months.

### **5.2 Key issues for the coming month**

Key issues to be considered in the coming month include:

#### *Air Impact*

- To monitor the water injection rate continuously.
- To monitor the fuel sulphur content of the LGO to be burnt in the combined cycle unit.

#### *Water Impact*

- To continuously carry out the water quality monitoring for GT57 as required by the EM&A manual (Operational phase).

## **6. CONCLUSION**

Environmental monitoring was performed as required in the reporting month. All monitoring results were checked and reviewed.

No Action/Limit level exceedance on water injection rate was recorded in the reporting month.

No Action/Limit level exceedance on water quality parameters were recorded in the reporting month.

Environmental mitigation measures recommended in the Project Profile were implemented in the reporting month. No environmental complaint was received in the reporting month. No prosecution was received for this Project in the reporting period.

The environmental performance of the Project was generally satisfactory.

## Appendix A Event / Action Plans

Table A.1 Event and Action Plans for Air Quality

Exceedance	ET Leader	IEC	Operations Engineer
<b>Action Level</b>			
Exceedance of one sample	Identify source; Inform IEC verbally; Repeat measurement to confirm finding.	Check monitoring data submitted by ET and advise ET for any finding.	Rectify any unacceptable practice; Amend any working methods if appropriate.
Exceedance of two or more consecutive samples	Identify source; Inform IEC verbally; Repeat measurement to confirm finding; Increase monitoring frequency; Discuss with Operations Engineers on remedial actions required; If exceedance stops, discontinue additional monitoring.	Check monitoring data submitted by ET and advises ET for any finding; Verify the implementation of the remedial measures;	Discuss with ET on remedial actions required; Implement the agreed remedial actions.
<b>Limit level</b>			
Exceedance of one sample	Repeat measurement to confirm finding; Identify the source(s) of the impact. Verbally advise IEC, and inform the EPD of the exceedance, as soon as practicable; Discuss with Operations Engineers on remedial actions required; Increase monitoring frequency; Assess the effectiveness of the remedial actions and keep IEC and EPD informed of the results.	Check monitoring data submitted by ET and advises ET of any finding; Verify the implementation of the remedial measures.	Take immediate action to avoid further exceedances; Discuss with ET on remedial actions required Implement the agreed remedial actions.
Exceedance of two or more consecutive samples	Identify source; Identify the source(s) of the impact. Verbally advise IEC, and inform EPD of the exceedance as soon as practicable; Repeat measurement to confirm finding; Increase monitoring frequency; Carry out analysis on existing control procedures to determine possible mitigation to be implemented; Discuss with Operations Engineers on the remedial actions to be taken; If exceedance stops, discontinue additional monitoring.	Provide feedback and advise ET/Operations Engineers on the effectiveness of the remedial actions proposed by them; Verify the implementation of the remedial measures	Take immediate action to avoid further exceedance Discuss with ET on remedial actions required; Implement the agreed remedial actions; Stop the unit and check the suspected defective parts if the problem still does not come under control.

Table A.2 Event/Action Plan for Water Quality

Exceedance	ET Leader	IEC	Operations Engineer
<b>Action Level</b>			
Exceedance on one sampling day	Verbally inform IEC; Repeat in-situ measurement to confirm findings; Identify source(s) of impact.	Check monitoring data submitted by ET and advises ET for any findings.	Rectify unacceptable practice; Amend any working methods if appropriate.
Exceedances on more than one consecutive sampling day	Identify source(s) of impact; Verbally inform IEC; Repeat in-situ measurements to confirm findings; Increase monitoring frequency; Discuss with Operations Engineers on remedial actions required; If exceedance stops, discontinue additional monitoring	Check monitoring data submitted by ET and advises ET for any finding; Verify the implementation of the remedial measures.	Discuss with ET on remedial actions required; Implement the agreed remedial actions.
<b>Limit Level</b>			
Exceedance on one sampling day	Repeat measurement to confirm finding; Identify the source(s) of impact. Verbally advise IEC and inform the EPD of the exceedance, as soon as practicable; Discuss with Operations Engineers on remedial actions require; Increase monitoring frequency; Assess the effectiveness of the remedial actions and keep IEC and EPD informed of the results.	Check monitoring data submitted by ET and advises ET for any finding; Verify the implementation of the remedial measures.	Take immediate action to avoid further exceedance; Discuss with ET on remedial actions required; Implement the agreed remedial actions.
Exceedances on more than one consecutive sampling day	Identify the source(s) of impact. Verbally advise IEC, and inform EPD of the exceedance as soon as practicable; Repeat measurement to confirm finding; Increase monitoring frequency; Carry out analysis on existing control procedures to determine possible mitigation to be implemented; Discuss with Operations Engineers on the remedial actions to be taken; If exceedance stops, discontinue additional monitoring.	Provide feedback and advise ET/Operations Engineers on the effectiveness of the remedial actions proposed by them; Verify the implementation of the remedial measures.	Take immediate action to avoid further exceedance; Discuss with ET on remedial actions required; Implement the agreed remedial actions; Stop the unit and check the suspected defective parts if the problem still does not come under control.

## Appendix B Action and Limit Levels for Air Quality, Water Quality Monitoring

### B.1 Air

Parameter	Action	Limit
Stack NOx	185 mg/Nm <sup>3</sup>	185 mg/Nm <sup>3</sup>
Hourly Average Water Injection Rate	Measured Hourly Average Water Injection Rate lower than corresponding Specified Hourly Average water Injection Rate	Measured Hourly Average Water Injection Rate lower than corresponding Specified Hourly Average water Injection Rate.

## B.2 Water

Monitoring Area / Location	Parameters to be Monitored	Frequency	Concentration Not to Be Exceeded	Action	Limit	Proposed Action
Trade Effluent Cooling Water	Temperature	Daily, when the combined cycle unit is operating	Temperature at outfall should not exceed that at intake by > 10°C and temperature at outfall should not exceed 40°C	9.5°C	+10°C above intake	Please refer to the event & action plans in Table A.2.
	Total Residual Chlorine	Bi-weekly, when the combined cycle unit is operating	0.5mg/L	0.47	0.5	
Trade Effluent oil free drain discharge	Grease and Oil	Monthly, when the combined cycle unit is operating	20 mg/L	15	20	Please refer to the event & action plans in Table A.2.
Trade Effluent Boiler Blowdown (HRSG)	Temperature	At least twice per year, when the combined cycle unit is operating	40°C	-	40°C	Please refer to the event & action plans in Table A.2.
	Suspended Solids	At least twice per year, when the combined cycle unit is operating	30 mg/L	-	30	
	Grease & Oil	At least twice per year, when the combined cycle unit is operating	20 mg/L	-	20	
Marine waters cooling water outfall	Scum of foam in ambient water	Daily, when the combined cycle unit is operating	No scum within 500 m of Hung Shing Ye Beach	When scum passes the station south-west corner and north-west corner	No scum within 500 m of Hung Shing Ye Beach	Please refer to the event & action plans in Table A.2.

## Appendix C Summary Results and Observations on Water Quality Monitoring

### Maximum Outlet Temperature And Temperature Rise (Deg. Celsius) Of Cooling Water At C.W. Outfall Serving L1-L6 & GT57 Condensers Weighted By Flowrates of Individual Streams (July 2003)

Date	Maximum Outlet Temperature (Deg. Celsius)	Maximum Outlet Temperature Rise (Deg. Celsius)
15/07	38	8.6
16/07	39	8.0

### Total Residual Chlorine Level At First C.W. Outfall (July 2003)

Date of sampling	15/07
Total Residual Chlorine, mg/L	0.30

### Grease & Oil At Oil Free Drain From Oil Interceptor For GT57 (July 2003)

Date of sampling	15/07
Grease & Oil, mg/L	<10

### Boiler Blowdown from GT5 and GT7 HRSG To First C.W. Outfall (July 2003)

Date of sampling	15/07	
Source of discharge	GT5	GT7
Suspended Solid, mg/L	4	6
Grease & Oil, mg/L	<10	<10
Temperature, Deg. Celsius	36	31

Remark:

1. Monitoring will only be carried out when GT57 is operating.



OBSERVATION OF SCUM FORMATION IN MARINE WATERS MIXING ZONE  
AT LAMMA POWER STATION (July 2003)

<b>Date</b>	<b>Observation</b>
15/07	Some foam outside C.W Outfall and Defoamer added to Outfall No. 1 and No. 2
16/07	Some foam outside C.W Outfall and Defoamer added to Outfall No. 1 and No. 2

Remark:

1. The water spray system at the C.W. Outfall was in service in July 2003.