


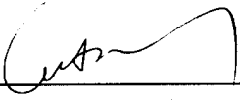
The Hongkong Electric Co Ltd
香港電燈有限公司



ENVIRONMENTAL IMPACT ASSESSMENT (EIA) ORDINANCE, CAP. 499

ENVIRONMENTAL PERMIT NO. EP-083/2000

**LAMMA POWER STATION
CONVERSION OF TWO EXISTING GAS TURBINES (GT5 & GT7) INTO A
COMBINED CYCLE UNIT
ENVIRONMENTAL MONITORING & AUDIT PROGRAMME
AT OPERATIONAL PHASE**

Report Title	<u>Monthly EM&A Report (July 2006)</u>
Date	<u>10 August 2006</u>
Certified by	<u></u> (Mr. Chan Kwok-Fai, Environmental Team Leader)
Verified by	<u></u> (Nature & Technologies (HK) Ltd, Independent Environmental Checker)

1. AIR AND WATER QUALITY MONITORING FOR GT57 OPERATION IN JULY 2006

This is the July 2006 Environmental Monitoring and Audit (EM&A) report for the Project "Operation of GT57 Combined Cycle Unit" prepared by the Environmental Team (ET). GT57 was not operated in the reporting month. In this regard, no air quality and water quality monitoring pertinent to GT57 was carried out in the reporting month.

2. PROJECT ORGANIZATION

As a result of organization alignment on 1 August 2006, Projects Division of HEC has taken up the EM&A work for GT57 Operation. The official contact person between HEC and EPD is Chief Engineer (Projects).

The management structure to oversee the Project, with effect from 1 August 2006, includes the following:

- Environmental Protection Department (The Authority);
- Chief Engineer (Projects) (The official contact person between HEC and EPD);
- Environmental Team Leader (ET);
- Independent Environmental Checker (IEC);
- Environmental Team (ET).

The new organization chart for the Operation EM&A programme is shown in Figure 2.1.

3. PROGRESS OF EXISTING AMBIENT AIR QUALITY NETWORK REVIEW

The review of the existing HEC ambient air quality network is in progress. No suitable site has been identified for the installation of an ambient air quality monitoring station at Cheung Chau as of the date of this report.

4. IMPLEMENTATION STATUS ON THERMAL PLUME SURVEYS

No thermal plume survey was carried out in the reporting month. The survey would only be conducted under the conditions stipulated in the proposal on the programme and methodologies for thermal plume survey attached in the EM&A manual (Operational Phase).

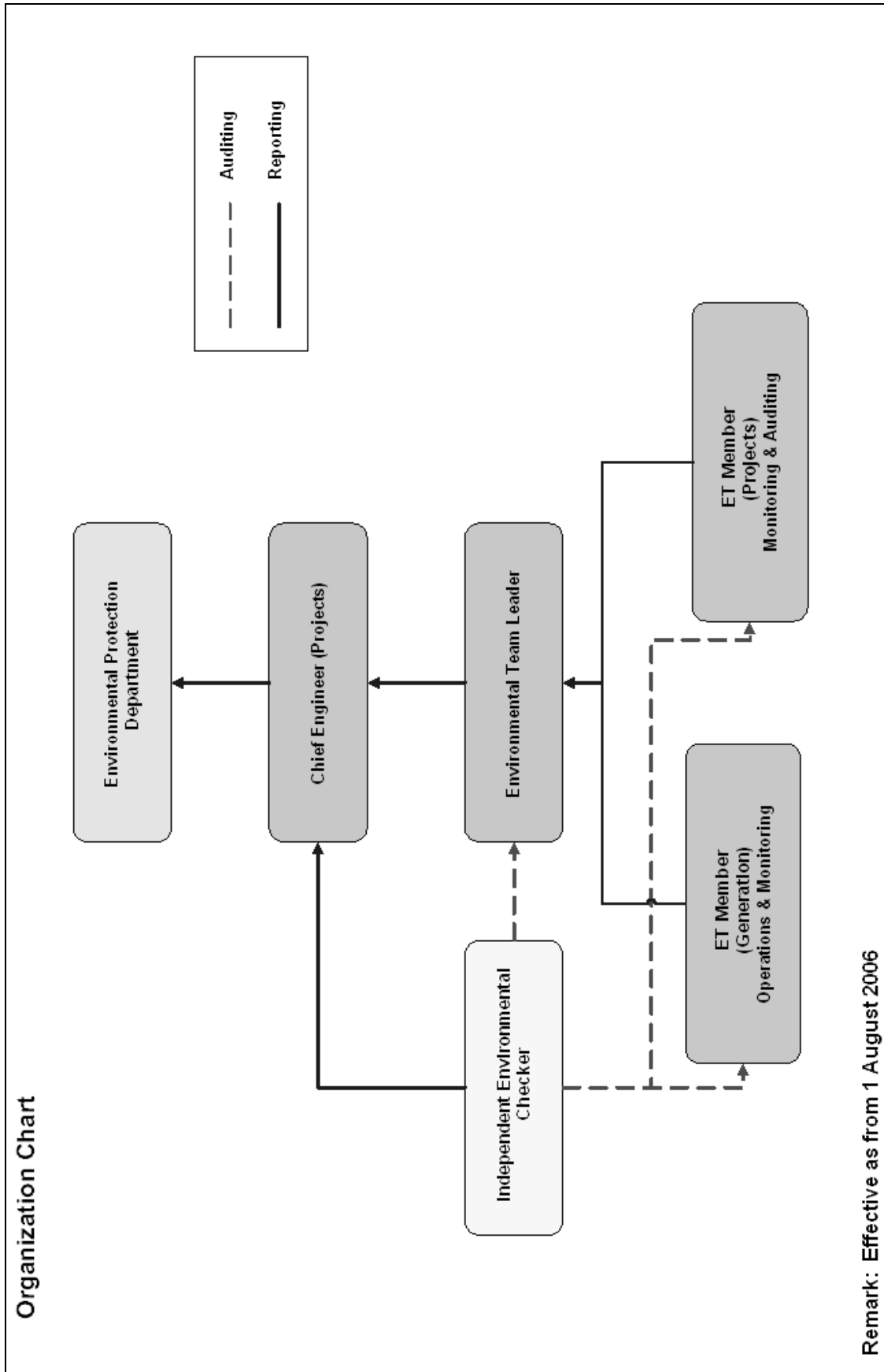


Figure 2.1 Organization Structure at Operational Phase of GT57 combined cycle unit

5. FUTURE KEY ISSUES

5.1 Outage Plan for the coming 3 months

No major outage plan for the next 3 months.

5.2 Key issues for the coming month

Key issues to be considered in the coming month include:

Air Impact

- To monitor the water injection rate continuously while GT57 is operating.
- To monitor the sulphur content of the LGO to be burnt in the combined cycle unit.

Water Impact

- To carry out water quality monitoring while GT57 is operating as required by the EM&A manual (Operational phase).

~ End ~