

Maeda Corporation
 Contract No. DC/2005/01
 Expansion of Shek Wu Hui Sewage Treatment Works and
 Upgrading of Ting Kok Road Pumping Station No 5
Master Programme (Rev. 4)

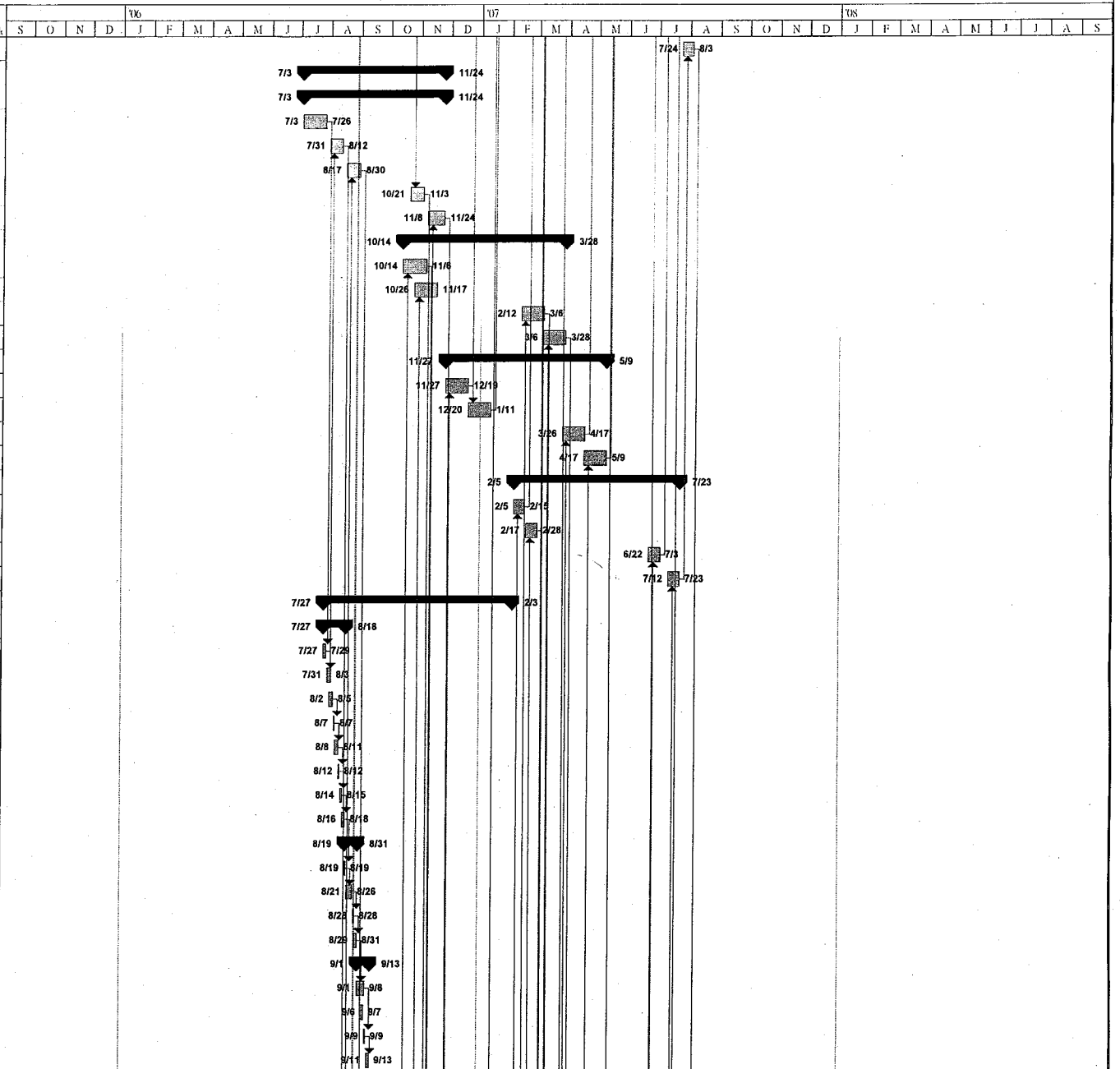
ID	Task Name	Duration	Start	Finish	Preced	Y6												Y7												Y8											
						S	O	N	D	J	F	M	A	M	J	J	A	S	O	N	D	J	F	M	A	M	J	J	A	S	O	N	D	J	F	M	A	M	J	J	A
1	Shek Wu Hui	939 days	Mon 05/9/26	Wed 08/9/24	26	[Gantt bar from 05/26 to 08/24]																																			
2	Preliminary works	61 days	Fri 05/10/7	Sat 05/12/17		[Gantt bar from 05/07 to 05/17]																																			
3	EM&A Baseline Monitoring	28 days	Sat 05/11/12	Wed 05/12/14		[Gantt bar from 05/12 to 05/14]																																			
4	Area A (ER office)	51 days	Mon 05/10/10	Wed 05/12/27		[Gantt bar from 05/10 to 05/27]																																			
5	Sub-base (150mm thk)	5 days	Mon 05/10/10	Sat 05/10/15		[Gantt bar from 05/10 to 05/15]																																			
6	ER office erection	30 days	Sat 05/10/22	Sat 05/11/26		[Gantt bar from 05/22 to 05/26]																																			
7	External works	51 days	Mon 05/10/10	Wed 05/12/27		[Gantt bar from 05/10 to 05/27]																																			
8	Sub-base (150mm thk)	5 days	Mon 05/10/10	Sat 05/10/15		[Gantt bar from 05/10 to 05/15]																																			
9	concrete slab (150mm thk)	3 days	Mon 05/12/5	Wed 05/12/7		[Gantt bar from 05/05 to 05/07]																																			
10	U-channel	6 days	Sat 05/11/26	Sat 05/12/3		[Gantt bar from 05/26 to 05/03]																																			
11	water pipe connection	6 days	Thu 05/12/1	Wed 05/12/7		[Gantt bar from 05/01 to 05/07]																																			
12	temp. power supply (generator)	1 day	Wed 05/12/7	Wed 05/12/7		[Gantt bar at 05/07]																																			
13	Area B	53 days	Mon 05/10/17	Sat 05/12/17		[Gantt bar from 05/17 to 05/17]																																			
14	Contractor's office erection	11 days	Mon 05/10/17	Sat 05/10/29		[Gantt bar from 05/17 to 05/29]																																			
15	Staff move in	1 day	Sat 05/10/29	Sat 05/10/29		[Gantt bar at 05/29]																																			
16	Holding tank installation	3 days	Mon 05/10/17	Wed 05/10/19	5	[Gantt bar from 05/17 to 05/19]																																			
17	Temporary access	3 days	Thu 05/10/20	Sat 05/10/22	16	[Gantt bar from 05/20 to 05/22]																																			
18	Project signboard	6 days	Sat 05/12/10	Sat 05/12/17		[Gantt bar from 05/10 to 05/17]																																			
19	Area A, B & C	12 days	Mon 05/10/24	Sat 05/11/5		[Gantt bar from 05/24 to 05/05]																																			
20	Hoarding erection	12 days	Mon 05/10/24	Sat 05/11/5		[Gantt bar from 05/24 to 05/05]																																			
21	Portion 2	49 days	Fri 05/10/7	Sat 05/12/3		[Gantt bar from 05/07 to 05/03]																																			
22	Site clearance	7 days	Fri 05/10/7	Sat 05/10/15		[Gantt bar from 05/07 to 05/15]																																			
23	Hoarding erection	12 days	Mon 05/11/14	Sat 05/11/26		[Gantt bar from 05/14 to 05/26]																																			
24	Fencing erection	14 days	Thu 05/11/17	Sat 05/12/3		[Gantt bar from 05/17 to 05/03]																																			
25	Wheel washing bay installation	6 days	Mon 05/11/14	Sat 05/11/19		[Gantt bar from 05/14 to 05/19]																																			
26	Portion 3	12 days	Mon 05/11/28	Sat 05/12/10		[Gantt bar from 05/28 to 05/10]																																			
27	Fencing erection	12 days	Mon 05/11/28	Sat 05/12/10		[Gantt bar from 05/28 to 05/10]																																			
28	Section 1 of works	575 days	Mon 05/9/26	Fri 07/7/27	26	[Gantt bar from 05/26 to 07/27]																																			
29	Air Blower House No.2	575 days	Mon 05/9/26	Fri 07/7/27	26	[Gantt bar from 05/26 to 07/27]																																			
30	Preparation Works	25 days	Mon 05/9/26	Mon 05/10/24	9/26	[Gantt bar from 05/26 to 05/24]																																			
31	Foundation	164 days	Tue 05/10/25	Wed 06/5/3		[Gantt bar from 05/25 to 06/03]																																			
32	GI works (pre-drilling & reporting)	35 days	Tue 05/10/25	Sat 05/12/3	30	[Gantt bar from 05/25 to 05/03]																																			
33	Preliminary H-pile (1nos.)	24 days	Sat 05/12/24	Sat 06/1/21	32	[Gantt bar from 05/24 to 06/21]																																			
34	Permanent H-pile (5nos.)	12 days	Mon 06/1/23	Sat 06/2/4	33	[Gantt bar from 06/23 to 06/04]																																			
35	Permanent H-pile (5nos.)	12 days	Mon 06/2/6	Sat 06/2/18	34	[Gantt bar from 06/06 to 06/18]																																			
36	Permanent H-pile (5nos.)	12 days	Mon 06/2/20	Sat 06/3/4	35	[Gantt bar from 06/20 to 06/04]																																			
37	Permanent H-pile (6nos.)	12 days	Mon 06/3/6	Sat 06/3/18	36	[Gantt bar from 06/06 to 06/18]																																			
38	Proof Load Test (1nos.)	18 days	Mon 06/4/3	Sat 06/4/22		[Gantt bar from 06/03 to 06/22]																																			
39	Proof Drilling	2 days	Tue 06/5/2	Wed 06/5/3		[Gantt bar from 06/02 to 06/03]																																			
40	Earthworks	15 days	Mon 06/4/24	Wed 06/5/10		[Gantt bar from 06/24 to 06/10]																																			
41	Area 1	8 days	Mon 06/4/24	Tue 06/5/2	38	[Gantt bar from 06/24 to 06/02]																																			
42	Area 2	15 days	Mon 06/4/24	Wed 06/5/10	38	[Gantt bar from 06/24 to 06/10]																																			
43	Substructure	80 days	Thu 06/5/11	Fri 06/8/11		[Gantt bar from 06/11 to 06/11]																																			

Date: Mon 06/8/28

Task Progress
 Critical Task
 Milestone
 Summary
 Rolled Up Task
 Rolled Up Milestone
 Rolled Up Critical Task
 Rolled Up Progress
 Split
 External Tasks
 Project Summary

Maeda Corporation
 Contract No. DC/2005/01
 Expansion of Shek Wu Hui Sewage Treatment Works and
 Upgrading of Ting Kok Road Pumping Station No 5
Master Programme (Rev. 4)

ID	Task Name	Duration	Start	Finish	Preced
130	Portion D to E	10 days	Tue 07/07/24	Fri 07/08/3	152
131	Earthworks	125 days	Mon 06/07/3	Fri 06/11/24	
132	Excavation to formation	125 days	Mon 06/07/3	Fri 06/11/24	
133	Portion A	21 days	Mon 06/07/3	Wed 06/07/26	
134	Portion B	12 days	Mon 06/07/31	Sat 06/08/12	155
135	Portion C	12 days	Thu 06/08/17	Wed 06/08/30	180
136	Portion D	12 days	Sat 06/10/21	Fri 06/11/3	119
137	Portion E	15 days	Wed 06/11/8	Fri 06/11/24	247
138	Backfilling to +2.92mPD	142 days	Sat 06/10/14	Wed 07/03/28	
139	Portion A to B	20 days	Sat 06/10/14	Mon 06/11/6	198
140	Portion B to C	20 days	Thu 06/10/26	Fri 06/11/17	227
141	Portion C to D	20 days	Mon 07/02/12	Tue 07/03/6	296
142	Portion D to E	20 days	Tue 07/03/6	Wed 07/03/28	301
143	Backfilling to +5.30mPD	141 days	Mon 06/11/27	Wed 07/05/9	
144	Portion A to B	20 days	Mon 06/11/27	Tue 06/12/19	317
145	Portion B to C	20 days	Wed 06/12/20	Thu 07/01/11	144
146	Portion C to D	20 days	Mon 07/03/26	Tue 07/04/17	327
147	Portion D to E	20 days	Tue 07/04/17	Wed 07/05/9	329
148	Backfilling to FGL	145 days	Mon 07/02/5	Mon 07/07/23	
149	Portion A to B	10 days	Mon 07/02/5	Thu 07/02/15	177
150	Portion B to C	10 days	Sat 07/02/17	Wed 07/02/28	203
151	Portion C to D	10 days	Fri 07/06/22	Tue 07/07/3	268
152	Portion D to E	10 days	Thu 07/07/12	Mon 07/07/23	306
153	Portion A	165 days	Thu 06/07/27	Sat 07/07/3	
154	Pile heads	20 days	Thu 06/07/27	Fri 06/08/18	
155	excavation for pile head	3 days	Thu 06/07/27	Sat 06/07/29	133
156	break cement grout	4 days	Mon 06/07/31	Thu 06/08/3	155
157	cut pile and weld for pile head plate	4 days	Wed 06/08/2	Sat 06/08/5	
158	blinding for pile head	1 day	Mon 06/08/7	Mon 06/08/7	157
159	rebar fixing and formwork erection	4 days	Tue 06/08/8	Fri 06/08/11	158
160	concreting	1 day	Sat 06/08/12	Sat 06/08/12	159
161	dismantle formwork and form CJ	2 days	Mon 06/08/14	Tue 06/08/15	160
162	backfilling	3 days	Wed 06/08/16	Fri 06/08/18	161
163	Base slab	11 days	Sat 06/08/19	Thu 06/08/31	
164	blinding concrete	1 day	Sat 06/08/19	Sat 06/08/19	162
165	rebar fixing and formwork erection	6 days	Mon 06/08/21	Sat 06/08/26	164
166	concreting	1 day	Mon 06/08/28	Mon 06/08/28	165
167	dismantle formwork and form CJ	3 days	Tue 06/08/29	Thu 06/08/31	166
168	Wall up to +5.50mPD	11 days	Fri 06/09/1	Wed 06/09/13	
169	rebar fixing and formwork erection	7 days	Fri 06/09/1	Fri 06/09/8	167
170	Install puddle flanges at wall	2 days	Wed 06/09/6	Thu 06/09/7	
171	concreting	1 day	Sat 06/09/9	Sat 06/09/9	169
172	dismantle formwork and form CJ	3 days	Mon 06/09/11	Wed 06/09/13	171

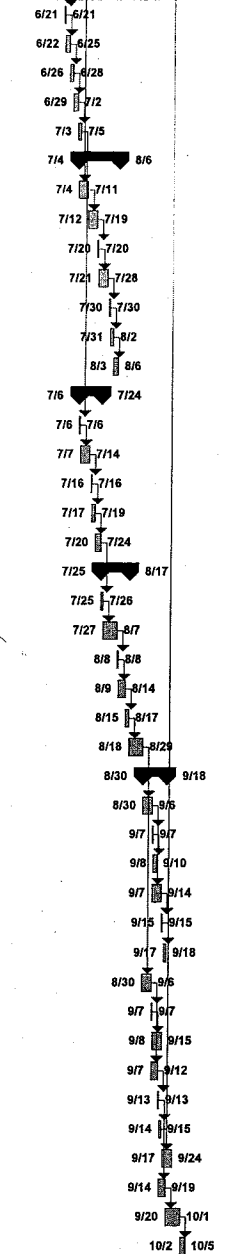


Date: Mon 06/8/28

Task		Progress		Summary		Rolled Up Critical Task		Rolled Up Progress		External Tasks	
Critical Task		Milestone		Rolled Up Task		Rolled Up Milestone		Split		Project Summary	

Maeda Corporation
 Contract No. DC/2005/01
 Expansion of Shek Wu Hui Sewage Treatment Works and
 Upgrading of Ting Kok Road Pumping Station No.5
Master Programme (Rev. 4)

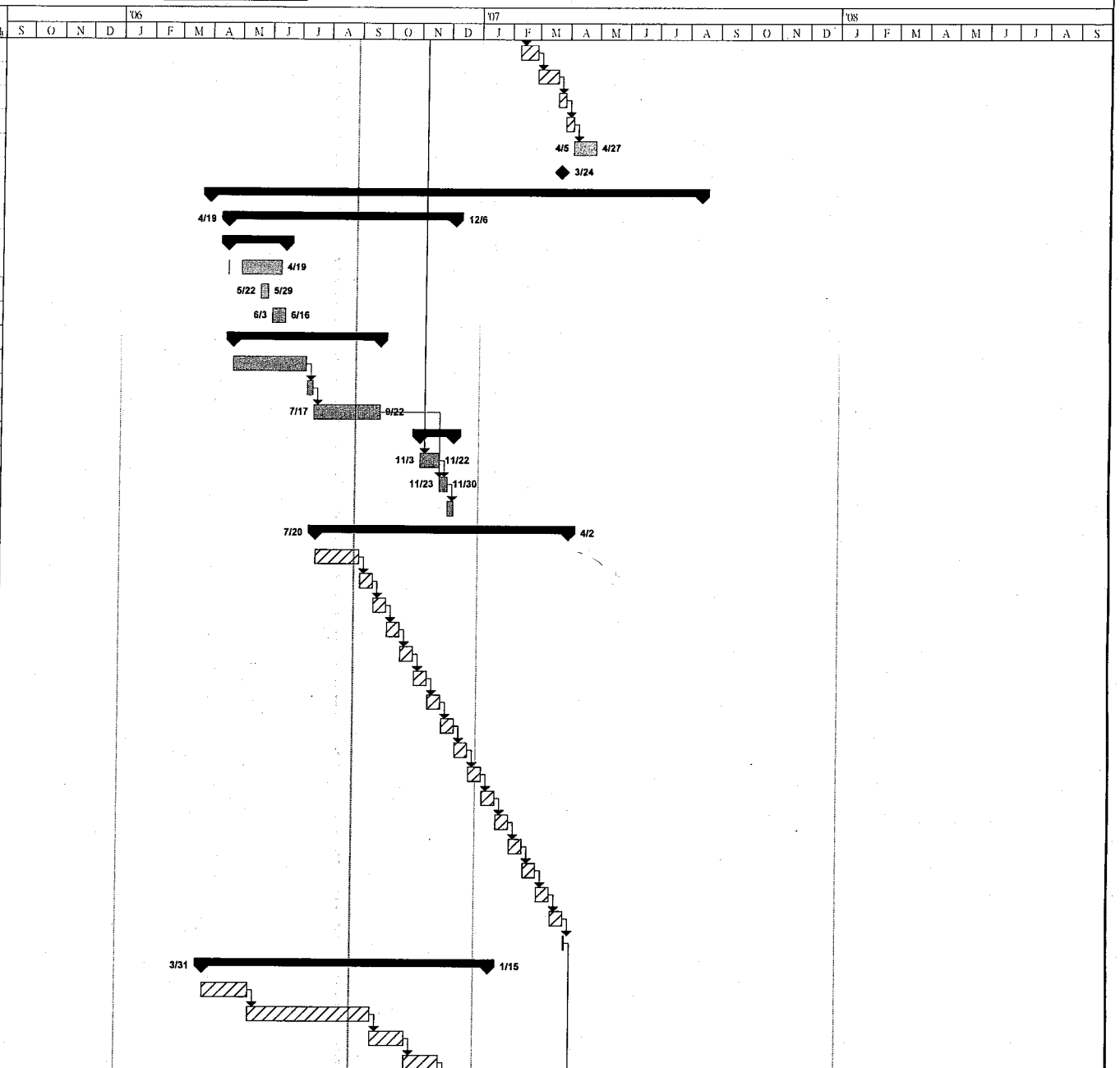
ID	Task Name	Duration	Start	Finish	Preced	Y6							Y7							Y8						
						S	O	N	D	J	F	M	A	M	J	J	A	S	O	N	D	J	F	M	A	M
517	concreting (blinding to +0.3)	1 day	Thu 07/6/21	Thu 07/6/21	515																					
518	dismantle formwork and form CJ	3 days	Fri 07/6/22	Mon 07/6/25	517																					
519	backfilling	3 days	Tue 07/6/26	Thu 07/6/28	518																					
520	remove Row 3 waling and strut	3 days	Fri 07/6/29	Mon 07/7/2	519																					
521	extract sheetpile Type 3B	3 days	Tue 07/7/3	Thu 07/7/5	520																					
522	Pile head (outer ground beam) (15 nos)	29 days	Wed 07/7/4	Mon 07/8/6																						
523	break cement grout	7 days	Wed 07/7/4	Wed 07/7/11	478																					
524	cut pile and weld pile head plate	7 days	Thu 07/7/12	Thu 07/7/19	523																					
525	blinding for pile head	1 day	Fri 07/7/20	Fri 07/7/20	524																					
526	rebar fixing and formwork erection	7 days	Sat 07/7/21	Sat 07/7/28	525																					
527	concreting	1 day	Mon 07/7/30	Mon 07/7/30	526																					
528	dismantle formwork	3 days	Tue 07/7/31	Thu 07/8/2	527																					
529	backfilling	3 days	Fri 07/8/3	Mon 07/8/6	528																					
530	Outer ground beam	16 days	Fri 07/7/6	Tue 07/7/24																						
531	blinding concrete	1 day	Fri 07/7/6	Fri 07/7/6	521																					
532	rebar fixing and formwork erection	7 days	Sat 07/7/7	Sat 07/7/14	531																					
533	concreting	1 day	Mon 07/7/16	Mon 07/7/16	532																					
534	dismantle formwork and form CJ	3 days	Tue 07/7/17	Thu 07/7/19	533																					
535	backfilling to formation of base slab	4 days	Fri 07/7/20	Tue 07/7/24	534																					
536	Base slab	21 days	Wed 07/7/25	Fri 07/8/17																						
537	blinding concrete	2 days	Wed 07/7/25	Thu 07/7/26	535																					
538	rebar fixing and formwork erection	10 days	Fri 07/7/27	Tue 07/8/7	537																					
539	concreting	1 day	Wed 07/8/8	Wed 07/8/8	538																					
540	dismantle formwork and form CJ	5 days	Thu 07/8/9	Tue 07/8/14	539																					
541	backfilling to +2.2mPD	3 days	Wed 07/8/15	Fri 07/8/17	540																					
542	Break and remove Row 2 ring beam	10 days	Sat 07/8/18	Wed 07/8/29	541																					
543	Wall slab to +5.51mPD (4 panels)	17 days	Thu 07/8/30	Tue 07/9/18																						
544	rebar fixing and formwork erection (1st)	7 days	Thu 07/8/30	Thu 07/9/6	542																					
545	concreting	1 day	Fri 07/9/7	Fri 07/9/7	544																					
546	dismantle formwork and form CJ	2 days	Sat 07/9/8	Mon 07/9/10	545																					
547	rebar fixing and formwork erection (2nd)	7 days	Fri 07/9/7	Fri 07/9/14	544																					
548	concreting	1 day	Sat 07/9/15	Sat 07/9/15	547																					
549	dismantle formwork and form CJ	2 days	Mon 07/9/17	Tue 07/9/18	548																					
550	rebar fixing and formwork erection (3rd)	7 days	Thu 07/8/30	Thu 07/9/6	542																					
551	concreting	1 day	Fri 07/9/7	Fri 07/9/7	550																					
552	dismantle formwork and form CJ	7 days	Sat 07/9/8	Sat 07/9/15	551																					
553	rebar fixing and formwork erection (4th)	5 days	Fri 07/9/7	Wed 07/9/12	550																					
554	concreting	1 day	Thu 07/9/13	Thu 07/9/13	553																					
555	dismantle formwork	2 days	Fri 07/9/14	Sat 07/9/15	554																					
556	water test	7 days	Mon 07/9/17	Mon 07/9/24	555																					
557	backfilling to +4.20mPD	5 days	Fri 07/9/14	Wed 07/9/19	554																					
558	Break and remove Row 1 ring beam	10 days	Thu 07/9/20	Mon 07/10/1	557																					
559	backfilling to +5.51mPD	4 days	Tue 07/10/2	Fri 07/10/5	558																					



Date: Mon 06/8/28
 Task: Progress Summary Rolled Up Critical Task Rolled Up Progress External Tasks Critical Task Milestone Rolled Up Task Rolled Up Milestone Split Project Summary

Maeda Corporation
 Contract No. DC/2005/01
 Expansion of Shek Wu Hui Sewage Treatment Works and
 Upgrading of Ting Kok Road Pumping Station No 5
Master Programme (Rev. 4)

ID	Task Name	Duration	Start	Finish	Predecessors
732	Lift 4 (from +5.5mPD to +6.5mPD)	15 days	Fri 07/2/09	Mon 07/2/26	730
733	Lift 5 (from +6.5mPD to +10.0mPD)	18 days	Tue 07/2/27	Mon 07/3/19	732
734	Lift 6 (from +10.0mPD to +11.4mPD)	7 days	Tue 07/3/20	Tue 07/3/27	733
735	Lift 7 (from +11.4mPD to +13.4mPD)	7 days	Wed 07/3/28	Wed 07/4/4	734
736	Internal finishes (incl. Plumbing, cat ladder, etc.)	20 days	Thu 07/4/5	Fri 07/4/27	735
737	Key date of Section 6 of the Works	1 day	Sat 07/3/24	Sat 07/3/24	
738	Section 7 of the Works	429 days	Fri 06/3/31	Mon 07/8/13	
739	Pipe Jacking	199 days	Wed 06/4/19	Wed 06/12/6	
740	TL2	51 days	Wed 06/4/19	Fri 06/6/16	
741	Jacking pits construction for TL2	36 days	Wed 06/4/19	Mon 06/6/12	
742	Setting Up for Jacking Machine	7 days	Mon 06/5/22	Mon 06/5/29	
743	Pipe Jacking at TL2	12 days	Sat 06/6/3	Fri 06/6/16	
744	TL3	130 days	Tue 06/4/25	Fri 06/9/22	
745	Jacking pits construction for TL3	65 days	Tue 06/4/25	Sat 06/7/8	
746	Setting Up for Jacking Machine	6 days	Mon 06/7/10	Sat 06/7/15	745
747	Pipe Jacking at TL3	59 days	Mon 06/7/17	Fri 06/9/22	746
748	TL1	29 days	Fri 06/1/13	Wed 06/1/26	
749	Jacking pits construction for TL1	17 days	Fri 06/1/13	Wed 06/1/22	726
750	Setting Up for Jacking Machine	7 days	Thu 06/11/23	Thu 06/11/30	747, 749
751	Pipe Jacking at TL1	5 days	Fri 06/12/1	Wed 06/12/6	750
752	Twin 450mm Rising Mains	220 days	Thu 06/7/20	Mon 07/4/2	
753	Portion 1 (12m)	39 days	Thu 06/7/20	Sat 06/9/2	
754	Portion 2 (24m)	12 days	Mon 06/9/4	Sat 06/9/16	753
755	Portion 3 (24m)	12 days	Mon 06/9/18	Sat 06/9/30	754
756	Portion 4 (24m)	12 days	Mon 06/10/2	Sat 06/10/14	755
757	Portion 5 (24m)	12 days	Mon 06/10/16	Sat 06/10/28	756
758	Portion 6 (24m)	12 days	Mon 06/10/30	Sat 06/11/11	757
759	Portion 7 (24m)	12 days	Mon 06/11/13	Sat 06/11/25	758
760	Portion 8 (24m)	12 days	Mon 06/11/27	Sat 06/12/9	759
761	Portion 9 (24m)	12 days	Mon 06/12/11	Sat 06/12/23	760
762	Portion 10 (24m)	12 days	Mon 06/12/25	Sat 07/1/6	761
763	Portion 11 (24m)	12 days	Mon 07/1/8	Sat 07/1/20	762
764	Portion 12 (24m)	12 days	Mon 07/1/22	Sat 07/2/3	763
765	Portion 13 (24m)	12 days	Mon 07/2/5	Sat 07/2/17	764
766	Portion 14 (24m)	12 days	Mon 07/2/19	Sat 07/3/3	765
767	Portion 15 (24m)	12 days	Mon 07/3/5	Sat 07/3/17	766
768	Portion 16 (12m)	12 days	Mon 07/3/19	Sat 07/3/31	767
769	Testing of pipeline	1 day	Mon 07/4/2	Mon 07/4/2	768
770	Gravity Sewers and Manholes	249 days	Fri 06/3/31	Mon 07/1/15	
771	Excavation of Trial Pits	40 days	Fri 06/3/31	Tue 06/5/16	
772	Stage 2 (MH8 - MH9)	107 days	Wed 06/5/17	Mon 06/9/18	771
773	Stage 1 and 1A(V.O. MH8 - MH7A - MH7)	30 days	Tue 06/9/19	Mon 06/10/23	772
774	Stage 3 (MH9 - MH10)	30 days	Tue 06/10/24	Mon 06/11/27	773



Date: Mon 06/8/28

Task	Progress	Summary	Rolled Up Critical Task	Rolled Up Progress	External Tasks
Critical Task	Milestone	Rolled Up Task	Rolled Up Milestone	Split	Project Summary