

ATAL-Degrémont-China State Joint Venture

Contract No. DC/2008/03
Design, Build and Operate Pillar
Point Sewage Treatment Works:
Twenty-ninth Monthly EM&A Report

April 2013

Environmental Resources Management

16/F, DCH Commercial Centre,
25 Westlands Road,
Quarry Bay, Hong Kong
Telephone: (852) 2271 3000
Facsimile: (852) 2723 5660
E-mail: post.hk@erm.com
<http://www.erm.com>

ATAL-Degrémont-China State Joint Venture

Contract No. DC/2008/03
Design, Build and Operate Pillar
Point Sewage Treatment Works:
Twenty-ninth Monthly EM&A Report

April 2013

Reference 0119806

For and on behalf of ERM-Hong Kong, Limited	
Approved by:	Frank Wan
Signed:	
Position:	Partner
Certified by:	 (Environmental Team Leader – Winnie Ko)
Certified by:	 (Registered Landscape Architect (R078) - Christina Ip)
Date:	9 April 2013

Your Ref:
Our Ref: 60017423/C/iyys13040901

By Hand & By Fax (2833 9162)

Drainage Services Department
Sewage Services Branch
Harbour Area Treatment Scheme Division
5/F., Western Magistracy,
2A Pok Fu Lam Road,
Hong Kong.

Attn: Mr. Kenley C.K. KWOK (T: 2159 3409)

9 April 2013

Dear Sir,

**Contract No. DC/2008/03
Design, Build and Operate
Pillar Point Sewage Treatment Works**

Monthly EM&A Report for March 2013

Reference is made to Environmental Team (ET)'s draft of the Monthly EM&A Report for March 2013 provided by email dated 8 and 9 April 2013. We have no further comment.

We hereby verify the said Monthly EM&A Report as having complied with the requirement as set out in the EM&A Manual in accordance with the condition 3.6 of Environmental Permit No. EP-321/2008.

Should you have any queries, please feel free to contact the undersigned at 3922 9393.

Yours faithfully,

For and on behalf of
AECOM Asia Co. Ltd.



Y T Tang
Independent Environmental Checker

c.c. AECOM – Mr. Tim Lee
ERM – Ms. Winnie Ko
ATAL–Degremont–China State JV – Mr. C.Y. Fong

(Fax No. 2317 7609)
(Fax No. 2723 5660)
(Fax No. 2811 3321)

CONTENTS

EXECUTIVE SUMMARY

1	INRODUCTION	1
1.1	<i>PURPOSE OF THE REPORT</i>	1
1.2	<i>STRUCTURE OF THE REPORT</i>	1
2	PROJECT INFORMATION	3
2.1	<i>BACKGROUND</i>	3
2.2	<i>GENERAL SITE DESCRIPTION</i>	3
2.3	<i>CONSTRUCTION ACTIVITIES</i>	4
2.4	<i>PROJECT ORGANISATION AND MANAGEMENT STRUCTURE</i>	4
2.5	<i>STATUS OF ENVIRONMENTAL APPROVAL DOCUMENTS</i>	4
3	ENVIRONMENTAL MONITORING REQUIREMENTS	6
3.1	<i>AIR QUALITY MONITORING</i>	6
3.1.1	<i>Monitoring Location</i>	6
3.1.2	<i>Monitoring Parameter and Frequency</i>	6
3.1.3	<i>Action and Limit Levels</i>	6
3.1.4	<i>Monitoring Equipment</i>	6
3.1.5	<i>Monitoring Methodology</i>	7
3.1.6	<i>Event and Action Plan</i>	9
3.2	<i>LANDSCAPE AND VISUAL MONITORING</i>	9
3.3	<i>ENVIRONMENTAL MITIGATION MEASURES AND ENVIRONMENTAL REQUIREMENTS IN CONTRACT</i>	9
4	IMPLEMENTATION STATUS ON ENVIRONMENTAL PROTECTION REQUIREMENTS	10
5	MONITORING RESULTS	11
5.1	<i>AIR QUALITY</i>	11
6	WASTE MANAGEMENT	12
7	ENVIRONMENTAL INSPECTIONS	13
7.1	<i>WEEKLY SITE AUDITS</i>	13
7.2	<i>LANDSCAPE AND VISUAL MONITORING</i>	14
8	ENVIRONMENTAL NON-CONFORMANCE	15
8.1.1	<i>Summary of Monitoring Exceedance</i>	15
8.1.2	<i>Summary of Environmental Non-Compliance</i>	15
8.1.3	<i>Summary of Environmental Complaint</i>	15
8.1.4	<i>Summary of Environmental Summon and Successful Prosecution</i>	15
9	FUTURE KEY ISSUES	16

9.1.1	<i>Key Issues for the Coming Month</i>	16
9.1.2	<i>Monitoring Schedule for the Next Reporting Period</i>	16
9.1.3	<i>Construction Programme for the Next Three Months</i>	16
10	<i>REVIEW OF THE EM&A DATA AND EIA PREDICTIONS</i>	17
10.1	<i>AIR QUALITY</i>	17
10.2	<i>WASTE MANAGEMENT</i>	17
10.3	<i>CONCLUSION OF THE REVIEW</i>	18
11	<i>CONCLUSIONS</i>	19

LIST OF TABLES

Table 2.1	Summary of Construction Activities Undertaken in Reporting Period
Table 2.2	Summary of Environmental Licensing, Notification and Permit Status
Table 3.1	Construction Phase Air Monitoring Locations
Table 3.2	Construction Phase Air Quality Monitoring Parameters and Frequency
Table 3.3	Action and Limit Levels for Air Quality
Table 3.4	TSP Monitoring Equipment
Table 6.1	Quantities of Waste Generated from the Project
Table 9.1	Construction Works to be Undertaken in the Next Reporting Period
Table 10.1	Comparison of the HKAQO and Air Quality Monitoring Results
Table 10.2	Quantity of Actual Amount of C&D Materials, General Wastes and Chemical Wastes Generated and EIA Estimation

LIST OF ANNEXES

Annex A	Location of Project
Annex B	Works Location
Annex C	Project Organization Chart and Contact Detail
Annex D	Locations of Air Quality Monitoring Stations
Annex E	Monitoring Schedule of the Reporting Month and Next Month
Annex F	Calibration Reports for HVSs
Annex G	24-hour and 1-hour TSP Monitoring Results
Annex H	Event / Action Plan for Air Quality Monitoring
Annex I	Implementation Schedule of Mitigation Measures
Annex J	Waste Flow Table
Annex K	Environmental complaint, Environmental Summons and Prosecution Log
Annex L	Construction Programme for the Project

EXECUTIVE SUMMARY

The construction works of *DC/2008/03 of Design, Build and Operate Pillar Point Sewage Treatment Works (the Project)* commenced on 13 November 2010. This is the 29th monthly Environmental Monitoring and Audit (EM&A) report presenting the EM&A works carried out during the period from 1 to 31 March 2013 in accordance with the EM&A Manual.

Summary of Construction Works undertaken during the Reporting Month

Works undertaken in the reporting month included:

- Conduct the finishing works at the Administration Building;
- Construct the structure, water tank, formatting water proofing and conduct finishing works at the Sludge Dewatering Building;
- Construct the structure, conduct finishing works and install machine at the PTW area of P2;
- Conduct finishing works and install machine at the CEPT area of P2;
- Conduct finishing works at UV building;
- Conduct finishing works at the Septic Waste Reception Station;
- Conduct control room finishing works at the Reuse Water Pump Room;
- Construct a control room, raft slab and install BS and DO duct at the Deodorisation Units Portion A;
- Construct a control room and raft slab at the Deodorisation Units Portion B;
- Conduct finishing works and install machine at the Chemical Building;
- Install BS at the Electrical building No.1;
- Install BS and conduct finishing works at the Electrical building No.3.;
- Construct drainage, cable ducts and boundary walls at P2;
- Construct structure at Payment Flow Meter Chamber; and
- Conduct backfilling and drainage works for the whole site.

Environmental Monitoring and Audit Progress

A summary of the monitoring activities undertaken in this reporting period is listed below:

- | | |
|---|---------|
| • 24-hour TSP Monitoring at each monitoring station (AM1 and AM2) | 5 sets |
| • 1-hour TSP Monitoring at each monitoring station (AM1 and AM2) | 15 sets |
| • Joint Environmental Site Inspection | 5 times |
| • Landscape & Visual Monitoring | Once |

Air Quality

5 sets of 24-hour TSP and 15 sets of 1-hr TSP measurements were carried out at each of the designated monitoring stations during the reporting period. No exceedance was recorded during the reporting period.

Waste Management

Waste generated from this Project includes inert construction and demolition (C&D) materials (public fill) and non-inert C&D materials (construction wastes). In total, 900.00 tonnes of inert C&D material were generated from the Project, which were reused in this Contract. 120.00 kg of metals, 45.00 kg of papers/ cardboard packing and 10.00 kg of plastics were sent to recyclers for recycling during the reporting period.

Environmental Site Inspection

Five weekly joint environmental site inspections were carried out by the representatives of the Contractor, SOR and the Environmental Team (ET). Details of the audit findings and implementation status of the mitigation measures are presented in *Section 7.1*.

Landscape & Visual

Review on landscape and visual mitigation measures was performed on 22 March 2013. Details of the audit findings and implementation status of the mitigation measures are presented in *Sections 3.2* and *7.2*.

Environmental Exceedance/Non-conformance/Compliant/Summons and Prosecution

No exceedance was recorded during the reporting period.

No non-compliance event was recorded during the reporting period.

No environmental complaint and summon/prosecution was received in this reporting period.

Future Key Issues

Works to be undertaken in the next reporting month include:

- Conduct the finishing works at the Administration Building;
- Construct the structure, formatting water proofing and conducting finishing works at the Sludge Dewatering Building;
- Conduct finishing works and install machine at the PTW area of P2;
- Conduct the finishing works and install machine at the CEPT area of P2;
- Conduct the finishing works at the UV building;
- Conduct the finish works at the Septic Waste Reception Station;
- Construct structure at the Reuse Water Pump Room;

- install BS and DO duct at the Deodorisation Units Portion A;
- Construct a control room and raft slab at the Deodorisation Units Portion B;
- Construct the finishing works and install machine at the Chemical Building;
- Install BS at the Electrical building No.1;
- Install BS at the Electrical building No. 3;
- Complete works at the Electrical building No.4;
- Construct drainage, cable ducts and boundary walls at P2;
- Construct wall and roof at Payment Flow Meter Chamber; and
- Conduct backfilling and drainage works for the whole site.

Potential environmental impacts arising from the above construction activities are mainly associated with dust, construction noise, site runoffs, waste management and landscaping issues.

1 INTRODUCTION

ERM-Hong Kong, Limited (ERM) was appointed by ATAL – Degrémont – China State Joint Venture (ADC-JV) (the Contractor) as the Environmental Team (ET) to undertake the Environmental Monitoring and Audit (EM&A) programme for the *Contract No. DC/2008/03 of Design, Build and Operate Pillar Point Sewage Treatment Works (the Project)*.

1.1 PURPOSE OF THE REPORT

This is the 29th EM&A report which summarises the monitoring results and audit findings for the EM&A programme during the reporting period from 1 to 31 March 2013.

1.2 STRUCTURE OF THE REPORT

The structure of the report is as follows:

Section 1: **Introduction**

It details the scope and structure of the report.

Section 2: **Project Information**

It summarises the background and scope of the Project, site description, project organization, construction programme, construction works undertaken and status of the Environmental Permits (EP)/licences over the construction phase of the Project.

Section 3: **Environmental Monitoring Requirements**

It summarises the environmental monitoring requirements including monitoring parameters, programmes, methodologies, frequency, locations, Action and Limit Levels, Event/Action Plans, environmental mitigation measures as recommended in the approved EIA report, EP and relevant environmental requirements stated in the Contract Specification.

Section 4: **Implementation Status on Environmental Mitigation Measures**

It summarises the implementation of environmental protection measures during the reporting period.

Section 5: **Monitoring Results**

It summarises the monitoring results obtained in the reporting period.

Section 6: **Waste Management**

It summarises the quantity of public fill and construction waste generated in the reporting period

Section 7: **Environmental Site Inspection**

It summarises the audit findings of the weekly site inspections undertaken within the reporting period.

Section 8: **Environmental Non-conformance**

It summarises any exceedance of environmental performance standard, environmental complaints and summons received within the reporting period.

Section 9: **Further Key Issues**

It summarises the impact forecast and monitoring schedule for the next reporting month.

Section 10: **Review of the EM&A Data and Predictions**

It compares the monitoring data and waste quantity against the predictions in the approved Project EIA report.

Section 11 : **Conclusions**

2 PROJECT INFORMATION

2.1 BACKGROUND

The existing Pillar Point Sewage Treatment Works (PPSTW) is located to the north of the Tuen Mun River Trade Terminal and is abutting the Lung Mun Road in the north. It is a preliminary treatment works with screening and grit removal processes and the treated effluent is discharged to the sea (North Western Water Control Zone) via a twin submarine outfall. The *Review of the Tuen Mun and Tsing Yi Sewerage Master Plan* (RTMTYSMP), commissioned in February 1999, recommended that the sewage treatment capacity be expanded and the plant be upgraded to chemically enhanced primary treatment (CEPT) with disinfection. This is to cater for the projected ultimate population and planned developments in the Tuen Mun area, and to improve the effluent quality reducing pollution loadings to the receiving waters.

The upgrading of the PPSTW comprises the following works:

- expanding the treatment capacity of the existing PPSTW to cope with the increased peak wet-weather sewage flow in Tuen Mun area;
- upgrading the sewage treatment level of the existing PPSTW to incorporate chemical treatment with disinfection at minimum removal rates of 70%, 55% and 99.9% of suspended solids (SS), biochemical oxygen demand (BOD) and *E.coli*, respectively;
- upgrading the existing septic waste reception facilities at PPSTW; and
- providing and upgrading ancillary facilities including the administration building, workshop, laboratory, odour control facilities, sludge handling and dewatering facilities, access roads and minor landscaping works within the STW for the operation and maintenance of the upgraded STW.

The potential environmental impacts of the Project have been studied in the “*Upgrading of Pillar Point Sewage Treatment Works*” (EIAO Register No: AEIAR-145/2008). The EIA was approved on 10 June 2008 under the *Environmental Impact Assessment Ordinance* (EIAO) and an Environmental Permit (EP-321/2008) for the works was granted on 17 November 2008. Under the requirements of Condition 3.1 of EP-322/2008, an EM&A programme as set out in the EM&A Manual is required to be implemented.

The construction works commenced on 13 November 2010 and are scheduled for completion by 2014.

2.2 GENERAL SITE DESCRIPTION

The open area adjacent to the existing PPSTW has been designated for the upgrading works. The layout of the upgrading works is illustrated in *Annex A*.

2.3 CONSTRUCTION ACTIVITIES

A summary of the major construction activities undertaken in the reporting period is shown in *Table 2.1*. The locations of the construction activities are shown in *Annex B*. The construction programme of the Project in the reporting month and the upcoming month is presented in *Annex L*.

Table 2.1 *Summary of Construction Activities Undertaken in the Reporting Period*

Construction Activities Undertaken
<ul style="list-style-type: none"> • Conduct the finishing works at the Administration Building; • Construct the structure, water tank, formatting water proofing and conduct finishing works at the Sludge Dewatering Building; • Construct the structure, conduct finishing works and install machine at the PTW area of P2; • Conduct finishing works and install machine at the CEPT area of P2; • Conduct finishing works at UV building; • Conduct finishing works at the Septic Waste Reception Station; • Conduct control room finishing works at the Reuse Water Pump Room; • Construct a control room, raft slab and install BS and DO duct at the Deodorisation Units Portion A; • Construct a control room and raft slab at the Deodorisation Units Portion B; • Conduct finishing works and install machine at the Chemical Building; • Install BS at the Electrical building No.1; • Install BS and conduct finishing works at the Electrical building No.3.; • Construct drainage, cable ducts and boundary walls at P2; • Construct structure at Payment Flow Meter Chamber; and • Conduct backfilling and drainage works for the whole site.

2.4 PROJECT ORGANISATION AND MANAGEMENT STRUCTURE

The project organisation chart and contact details are shown in *Annex C*.

2.5 STATUS OF ENVIRONMENTAL APPROVAL DOCUMENTS

A summary of the valid permits, licences, and/or notifications on environmental protection for this Project is presented in *Table 2.2*.

Table 2.2 *Summary of Environmental Licensing, Notification and Permit Status*

Permit/ Licences/ Notification	Reference	Validity Period	Remarks
Environmental Permit	EP-321/2008	Throughout the Contract	Permit granted on 17 November 2008.
Notification of Construction Works under the Air Pollution Control	Ref No. 308136	Throughout the Contract	-

Permit/ Licences/ Notification	Reference	Validity Period	Remarks
(Construction Dust) Regulation			
Water Discharge License	WT00008027-2010	Till 31 December 2015	Wastewater discharge licence was issued by EPD on 7 December 2010.
Construction Noise Permit	GW-RW0974-12	28 January 2013- 27 July 2013	
Chemical Waste Producer Registration	5213-421-A2620-01	Throughout the Contract	Licence approved on 28 October 2010

3 ENVIRONMENTAL MONITORING REQUIREMENTS

3.1 AIR QUALITY MONITORING

3.1.1 Monitoring Location

The proposed air quality monitoring stations for the construction phase of the Project, as recommended in the approved EM&A Manual, are given in *Table 3.1* and shown in *Annex D*. The proposed locations (AM1 and AM2) have been agreed with the Drainage Services Department (DSD), Environmental Protection Department (EPD) and the Independent Environmental Checker (IEC).

Table 3.1 Construction Phase Air Monitoring Locations

Monitoring ID	Air Quality Monitoring Station
AM1	Tuen Mun EMSD Servicing Vehicle Station
AM2	River Trade Terminal Office

3.1.2 Monitoring Parameter and Frequency

The construction phase air quality monitoring has been conducted at the designated monitoring stations in accordance with the requirements stipulated in the EM&A Manual. 1-hour and 24-hour TSP levels have been monitored at the frequency and duration stated in *Table 3.2*. The construction phase TSP monitoring has been conducted as per the schedule presented in *Annex E*.

Table 3.2 Construction Phase Air Quality Monitoring Parameters and Frequency

Parameter	Frequency
24-hour average TSP	Once every 6 days
1-hour average TSP	3 times every 6 days

3.1.3 Action and Limit Levels

The Action and Limit levels have been established and presented in *Table 3.3*.

Table 3.3 Action and Limit Levels for Air Quality

Parameter	Air Monitoring Station	Action Level, μgm^{-3}	Limit Level, μgm^{-3}
24-hour TSP	AM1	183	260
	AM2	192	260
1-hour TSP	AM1	343	500
	AM2	383	500

3.1.4 Monitoring Equipment

Continuous 24-hour and 1-hour TSP monitoring was performed using High Volume Samplers (HVS) with appropriate sampling inlets located at the designated monitoring stations.

The performance specification of HVS complied with the standard method “*Determination of Suspended Particulate Matter in the Atmosphere (High Volume Method)*” as stipulated in *US EPA Standard Title 40, Code of Federation Regulations Chapter 1 (Part 50 Appendix B)*. Table 3.4 summarises the equipment that were deployed for the 24-hour and 1-hour TSP monitoring respectively.

Table 3.4 *TSP Monitoring Equipment*

Monitoring Station	Monitoring Equipment (HVS and Calibrator)
<i>24-hr and 1-hr TSP</i>	
AM1	GMW GS-2310 (S/N 7580), CM-AIR-43 (S/N 0438320)
AM2	GMW GS-2310 (S/N 1252), CM-AIR-43 (S/N 0438320)

3.1.5 *Monitoring Methodology*

The setup locations of the HVSs were listed in *Table 3.1*. All HVSs were free-standing with no obstruction.

The following criteria were considered in the installation of the HVSs:

- appropriate support to secure the samplers against gusty wind were provided at AM1 and AM2;
- a minimum of 2m separation from walls, parapets and penthouses was required for rooftop samplers;
- no furnace or incinerator flues was nearby;
- airflow around the sampler was unrestricted; and
- permission was obtained to set up the samplers and gain access to the monitoring stations.

Preparation of Filter Papers

- glass fibre filters were labelled and sufficient filters that were clean and without pinholes were selected;
- all filters were equilibrated in the conditioning environment for 24 hours before weighing. The conditioning environment temperature was around 25°C and not variable by more than $\pm 3^\circ\text{C}$; the relative humidity (RH) was 40%; and
- SGS Hong Kong Ltd, a HOKLAS accredited laboratory, implemented comprehensive quality assurance and quality control programmes.

Field Monitoring

- the power supply was checked to ensure that the HVSs were working properly;

- the filter holder and area surrounding the filter were cleaned;
- the filter holder was removed by loosening the foul bolts and a new filter, with stamped number upward, on a supporting screen was aligned carefully;
- the filter was properly aligned on the screen so that the gasket formed an airtight seal on the outer edges of the filter;
- swing bolts were fastened to hold the filter holder down to the frame. The pressure applied should be sufficient to avoid air leakage at the edges;
- the shelter lid was closed and secured with an aluminium strip;
- the HVSs were warmed-up for about 5 minutes to establish run-temperature conditions;
- a new flowrate record sheet was inserted into the flow recorder;
- the flow rates of the HVSs were checked and adjusted to between 1.22 and 1.37 m³ min⁻¹ which were within the range specified in the EM&A Manual (ie 0.6 to 1.7 m³ min⁻¹);
- the programmable timer was set for a sampling period of 24 hours ± 1 hour, and the starting time, weather condition and the filter number were recorded;
- the initial elapsed time was recorded;
- at the end of sampling, the sampled filter was removed carefully and folded in half l so that only surfaces with collected particulate matter were in contact;
- the filter was placed in a clean plastic envelope and sealed;
- all monitoring information was recorded on a standard data sheet; and
- filters were sent to SGS Hong Kong Ltd for analysis.

Maintenance and Calibration

- the HVSs and their accessories were maintained in good working condition, eg. motor brushes were replaced routinely and electrical wiring was checked to ensure a continuous power supply; and
- the flow rate of each HVS with mass flow controller was calibrated using an orifice calibrator. Initial calibrations of the dust monitoring equipment were conducted upon installation and prior to commissioning. Five-point calibration was carried out for HVSs using CM-AIR-43 Calibration Kit. HVSs are calibrated on a bi-monthly basis. The calibration records for the HVSs are given in *Annex F*.

Wind Data Monitoring

Average wind data (wind speed and wind direction) during the monitoring period were obtained from the meteorological station at Tuen Mun of the Hong Kong Observatory (HKO) and were presented in *Annex G*.

3.1.6 *Event and Action Plan*

The Event/ Action Plan (EAP) for air quality monitoring is presented in *Annex H*.

3.2 *LANDSCAPE AND VISUAL MONITORING*

In accordance with the EM&A Manual, monthly landscape and visual monitoring is required to ensure that the design, implementation and maintenance of landscape and visual mitigation measures recommended in the approved EIA Report are fully achieved. The monitoring procedures and criteria as described in the EM&A Manual were adopted.

3.3 *ENVIRONMENTAL MITIGATION MEASURES AND ENVIRONMENTAL REQUIREMENTS IN CONTRACT*

All the relevant environmental mitigation measures listed in the EIA Report and EM&A Manual as well as the specific environmental requirements stated in the Contract Specification are summarised in *Annex I*. A summary of the key environmental mitigation measures implemented as per the Contract Requirements is also presented in *Annex I*.

IMPLEMENTATION STATUS ON ENVIRONMENTAL PROTECTION REQUIREMENTS

The Contractor has implemented environmental mitigation measures and requirements as stated in the approved EIA Report, EM&A Manual and EP. The implementation status of the measures during the reporting period is summarised in *Annex I*.

5 *MONITORING RESULTS*

5.1 *AIR QUALITY*

A total of 5 sets of 24-hour and 15 sets of 1-hour TSP measurements were taken at each of the monitoring stations (AM1 and AM2) during the reporting period. The monitoring data for 24-hour and 1-hour TSP together with the wind data and graphical presentations for the past 4 months are presented in *Annex G*. The weather conditions during the monitoring period ranged from sunny to cloudy. The local impacts near the monitoring stations of AM1 and AM2 were mainly associated with vehicular emissions. No exceedance of Action and Limit Level of the 1-hr and 24-hr TSP was recorded during the reporting period.

Wastes generated from this Project include inert construction and demolition (C&D) materials (public fill) and non-inert C&D materials (construction waste). Construction waste comprises general refuse, metals and paper/cardboard packaging materials. Metals generated from the Project are also grouped into construction waste as the materials were not disposed of with others at public fill. Reference has been made to the Monthly Summary Waste Flow Table prepared by the Contractor (see *Annex J*). With reference to the relevant handling records and trip tickets of this Project, the quantities of different types of waste generated in the reporting month are summarised in *Table 6.1*.

Table 6.1 *Quantities of Waste Generated from the Project*

Month / Year	Quantity			
	Total Inert C&D Materials Generated ^(a)	C&D Materials Recycled ^(c)	C&D Waste Disposed of at Landfill ^(d)	Chemical Waste
March 2013	900.00 tonnes	175.00 kg	97.43 tonnes	0 L

Notes:

- (a) Inert C&D materials (public fill) include bricks, concrete, building debris, rubble and excavated soil. In total, 900.00 tonnes of inert C&D waste were generated from the Project, which were reused in this Contract. The detailed waste flow is presented in *Annex J*.
- (b) Non-inert C&D materials (construction wastes) include metals, paper / cardboard packaging waste, plastics and other wastes such as general refuse. Metals generated from the Project were grouped into construction wastes as the materials were not disposed of with others at the public fill.
- (c) 120.00 kg of metals, 45.00 kg of papers/ cardboard packing and 10.00 kg of plastics were sent to recyclers for recycling during the reporting period
- (d) Construction wastes other than metals, paper/cardboard packaging, plastics and chemicals were disposed of at WENT Landfill by subcontractors.

7 ENVIRONMENTAL INSPECTIONS

7.1 WEEKLY SITE AUDITS

Joint site inspections were conducted by representatives of the Contractor, the SOR and the ET on 1, 8, 15, 22 and 27 March 2013. An inspection was conducted by IEC on 27 March 2013.

Major observations during the reporting period are summarised as follows:

1 March 2013

- Construction materials were observed in the U-channel near the Sludge Dewatering Building. The Contractor was reminded to remove the construction materials from the U-channel and keep it clean.
- The wheel washing bay at the exit near Chemically Enhanced Preliminarily Treatment Building was observed to be turbid. The Contractor was reminded to treat the wash-water before discharging into storm drains.

8 March 2013

- The haul road in front of Administration Building was observed dry and without water spraying. The Contractor was reminded to provide regular water spraying to the road, particularly in dry weather.
- Oil stains were observed next the Sludge Dewatering Building. The Contractor was reminded to clean up the oil stains and to store oils within lined and banded containment areas which shall have a capacity of the largest container or 20% of the storage capacity whichever is the greater, regularly drained of rain water.

15 March 2013

- A side branch was found hanging down on the retained tree 150. The Contractor was reminded to prune the side branch of this tree.

22 March 2013

- Exposed stockpiles at Preliminary Treatment Work were observed without impervious sheets. The Contractor was reminded to cover the stockpiles with impervious sheets to suppress fugitive dust.

27 March 2013

- General waste and fallen leaves were accumulating at the U-channel beside the Sludge Dewatering Building. The Contractor was reminded to remove them in order to prevent blockage of the drainage system.

- Construction materials were observed placing on the root flare of retained tree R143. The Contractor was reminded to remove the construction materials away from the trees and fence off the protection zone for them.
- Stagnant water was observed accumulating inside an oil drip tray which is close to the Sludge Dewatering Building. The Contractor was reminded to remove the stagnant water in order to prevent the overflow of contaminated water.

Follow-up actions resulting from the last site inspections were taken as reported by the Contractor and their results were observed in the site inspections conducted in the reporting period.

7.2

LANDSCAPE AND VISUAL MONITORING

In accordance with the EM&A Manual, monthly landscape and visual monitoring is required to ensure that the design, implementation and maintenance of landscape and visual mitigation measures recommended in the EIA Report are fully achieved. A review of the landscape and visual mitigation measures was performed on 22 March 2013. It was confirmed that most of the necessary landscape and visual mitigation measures as summarised in *Annex I* were implemented by the Contractor. The major findings are summarised as follow:

22 March 2013

- Construction materials were observed within the protection zone of retained tree 132, 131, 130, R04 and R06. The Contractor was reminded to remove the construction materials away from the trees and fence off the protection zone for them.
- Cracked tree trunk was observed for retained tree T20. The Contractor was reminded to install a cable through the branches above the crack to prevent them from sagging in the same direction under heavy branches and leaves and re-stressing the split.

8 **ENVIRONMENTAL NON-CONFORMANCE**

8.1.1 ***Summary of Monitoring Exceedance***

No exceedances of the Action and Limit Levels of 1-hr and 24-hr TSP was recorded during the reporting period.

8.1.2 ***Summary of Environmental Non-Compliance***

No non-compliance event was recorded during the reporting period.

8.1.3 ***Summary of Environmental Complaint***

No complaint was received during the reporting period. The cumulative environmental complaint log is shown in *Annex K*.

8.1.4 ***Summary of Environmental Summon and Successful Prosecution***

No summon was received during the reporting period. The cumulative summons/prosecution log is shown in *Annex K*.

9.1.1 Key Issues for the Coming Month

Works to be undertaken for the coming monitoring period are summarised in *Table 9.1*.

Table 9.1 Construction Works to be Undertaken in the Next Reporting Period

Work to be undertaken
<ul style="list-style-type: none"> • Conduct the finishing works at the Administration Building; • Construct the structure, formatting water proofing and conducting finishing works at the Sludge Dewatering Building; • Conduct finishing works and install machine at the PTW area of P2; • Conduct the finishing works and install machine at the CEPT area of P2; • Conduct the finishing works at the UV building; • Conduct the finish works at the Septic Waste Reception Station; • Construct structure at the Reuse Water Pump Room; • install BS and DO duct at the Deodorisation Units Portion A; • Construct a control room and raft slab at the Deodorisation Units Portion B; • Construct the finishing works and install machine at the Chemical Building; • Install BS at the Electrical building No.1; • Install BS at the Electrical building No. 3; • Complete works at the Electrical building No.4; • Construct drainage, cable ducts and boundary walls at P2; • Construct wall and roof at Payment Flow Meter Chamber; and • Conduct backfilling and drainage works for the whole site.

Potential environmental impacts arising from the above construction activities will be mainly associated with dust, construction noise, site runoffs, waste management and landscaping issues.

9.1.2 Monitoring Schedule for the Next Reporting Period

The tentative schedule of TSP monitoring for the next reporting period was presented in *Annex E*. Environmental monitoring will be conducted at the same monitoring locations in the next reporting period. The monitoring programme has been reviewed and was considered adequate for the nature of works in progress.

9.1.3 Construction Programme for the Next Three Months

The most up-to-date construction programme for the Project is presented in *Annex L*.

10.1 AIR QUALITY

Since the EIA has only included a qualitative assessment of dust impact during the construction phase, a comparison was made between the monitoring results from the start of the Project and the Hong Kong Air Quality Objectives (HKAQO) (see *Table 10.1*).

Table 10.1 Comparison of the HKAQO and Air Quality Monitoring Results

Monitoring Station	Corresponding ASR in EIA	HKAQO, $\mu\text{g m}^{-3}$	Measured 24-hour TSP Monitoring Results, $\mu\text{g m}^{-3}$ (a) (b)	
		24 hour (a)	Average	Range
AM1	A1	260	73	68 - 82
AM2	A7	260	83	75 - 90

Notes:

- (a) Only 24-hour TSP monitoring results were compared as there is no 1 hour TSP criterion in HKAQO.
- (b) The average and range of data were calculated from the period between the commencement of the construction works and this reporting month.

The monitoring results show that the average and range of the 24-hour TSP levels recorded since the commencement of the construction works have been well below the 24-hour TSP criterion in the HKAQO. Recommended mitigation measures in *Section 3.7.1.1* of EIA have been implemented throughout the construction period and were considered effective.

10.2 WASTE MANAGEMENT

The estimated amount of waste generated from the Project and the cumulative quantities of waste generated up to this reporting month are presented in *Table 10.2*. The amount of inert C&D material sent to public fills is higher than the estimated amount in the EIA. With reference to the C&D Material Assessment (Contractor's General Submission (CSF) No.: DC200803/CSF/SAF/060026/A), the difference in quantities is mainly due to the differences in excavation depths and the excavation methods in the Contract Works and that assumed in the Reference Design. Recommended mitigation measures in *Sections 7.5.1.1* to *7.5.1.9* of the EIA will continue to be implemented during the construction stage.

Table 10.2 *Quantity of Amount of C&D Materials, General Wastes and Chemical Wastes Actually Generated and Estimated in the EIA and C&D Material Assessment*

Type of Material	Estimated Amount of Public Fill and Construction Waste in the EIA (inert & non-inert)	Estimated Amount of Public Fill and Construction Waste in C&D Material Assessment (CSF No.: DC200803/CSF/SAF/060026/A) ^(c)	Accumulated Actual Amount of Public Fill and Construction Waste Recorded ^(a) ^(b) (inert & non-inert)
Amount of C&D Materials Arising	61,489.00 m ³	77,600.00 m ³	122,993.33 m ³
Amount of C&D Materials Reused on other site	-	-	3,163.89 m ³
Amount of C&D Materials Reused on site	14,926.00 m ³	18,000.00 m ³	23,460.56 m ³
Amount of C&D Materials Sent to Fill Banks	46,563.00 m ³	59,600.00 m ³	25,021.84 m ³
General Refuse Small	-	-	1,518.97 tonnes
Chemical Waste Small	-	-	810.00 L

Notes:

- (a) The actual amount of C&D Materials has been recorded since the commencement of construction works.
- (b) The density of soil and rock (bulked) is 1.8 tonnes/m³.
- (c) The estimated amount of C&D material generated from the Contract Works was revised in the C&D Material Assessment and submitted to the SO on 9 September 2010 (CSF No.: DC200803/CSF/SAF/060026/A) because of the new plant & facility layout.

10.3 CONCLUSION OF THE REVIEW

The EIA predictions and monitoring results since the commencement of the construction works have been reviewed. The EIA concluded that the Project would not cause adverse impacts to the environment, and monitoring results have also confirmed that so far. Mitigation measures recommended in the EP, EIA and EM&A Manual will continue to be implemented throughout the construction phase of the Project.

CONCLUSIONS

This EM&A Report presents the EM&A programme undertaken during the reporting period from 1 to 31 March 2013 in accordance with EM&A Manual and requirements of EP (EP-321/2008).

No exceedance of Action and Limit Levels of 24-hour TSP and 1-hour TSP was recorded at the monitoring stations during the reporting period.

Monthly landscape and visual monitoring was conducted in the reporting period. Most of the necessary landscape and visual mitigation measures recommended in the EIA Report were implemented by the Contractor. Follow-up actions are required by the Contractor to improve protection of the retained or to-be transplanted trees.

No non-compliance event was recorded during the reporting period.

No complaint and summons/prosecution was received during the reporting period.

The ET will keep track of the EM&A programme to ensure compliance of environmental requirements and the proper implementation of all the necessary mitigation measures in the coming periods.

Annex A

Location of Project

PROPOSED FACILITIES AND BUILDINGS

SECTION 1 INLET PUMPING STATION AND PRELIMINARY TREATMENT WORKS

- ① INLET CHAMBER
- ② COARSE SCREENS AND INLET PUMPING STATION
- ③ FINE SCREEN CHANNELS
- ④ GRIT CHAMBERS
- ⑤ INLET FLOWMETER CHAMBER
- ⑥ PTW MCC ROOM

- ⑦ BLOWER ROOM
- ⑧ SCREENING SKIP HOUSE
- ⑨ ODOR DUCT SUPPORTING BRIDGE
- ⑩ SEPTIC WASTE RECEPTION STATION
- ⑪ WEIGHBRIDGE
- ⑫ ELECTRICAL BUILDING 1

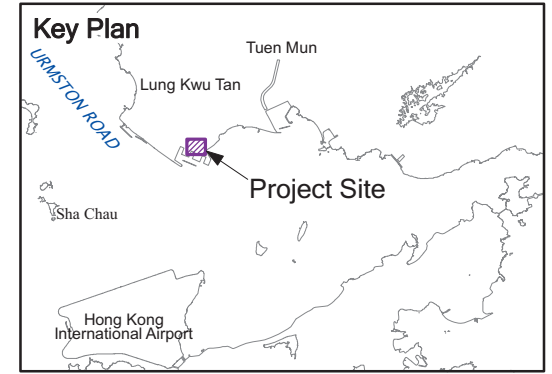
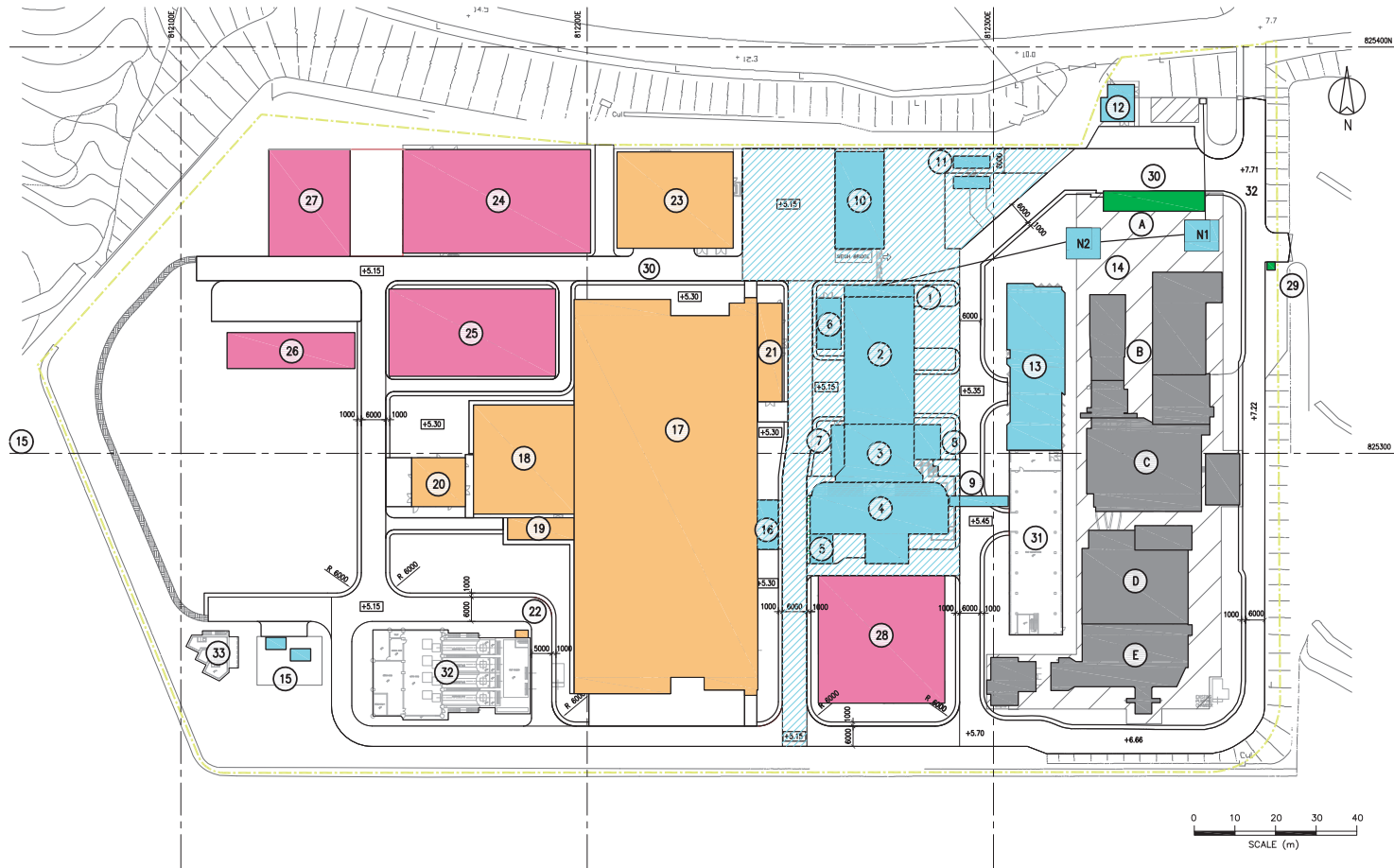
- ⑬ ADMINISTRATION BUILDING
- ⑭ INLET CHAMBERS
- ⑮ PAYMENT FLOWMETER CHAMBER
- ⑯ CEPT INLET CHAMBER

SECTION 2 CEPT TANKS UV DISINFECTION

- ⑰ CEPT TANKS
- ⑱ UV DISINFECTION CHANNELS
- ⑲ REUSE WATER PUMP ROOM
- ⑳ ELECTRICAL BUILDING 3
- ㉑ ELECTRICAL BUILDING 2
- ㉒ OUTFALL PUMPING STATION CONNECTION CHAMBER
- ㉓ CHEMICAL BUILDING

SECTION 3 SLUDGE TREATMENT & HANDLING AND ODOUR CONTROL

- ㉔ SLUDGE DEMATERING BUILDING
- ㉕ DEODORISATION UNITS (B)
- ㉖ SLUDGE SKIP STORAGE BUILDING
- ㉗ SLUDGE SKIP LOADING AREA
- ㉘ DEODORISATION UNITS (A)



SECTION 4 EXISTING BUILDINGS TO BE DEMOLISHED

- Ⓐ ADMINISTRATION BUILDING
- Ⓑ INLET SCREW PUMPING STATION AND MOTOR HOUSE
- Ⓒ COARSE SCREENS
- Ⓓ BLOWER HOUSE AND GRIT CHANNELS
- Ⓔ FINE SCREEN CHANNELS AND FLOWMETER CHAMBER

SECTION 5 EXTERNAL WORKS

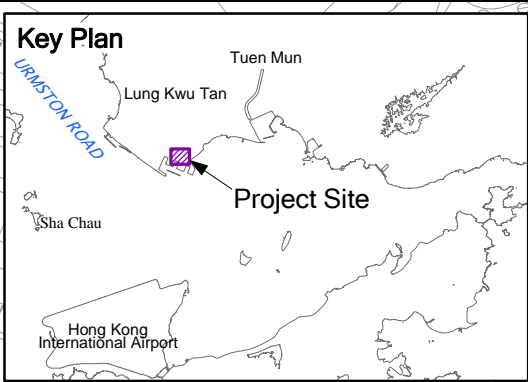
- ⑳ GATE HOUSE
- ㉑ CAR PARK

EXISTING BUILDING TO BE RETAINED

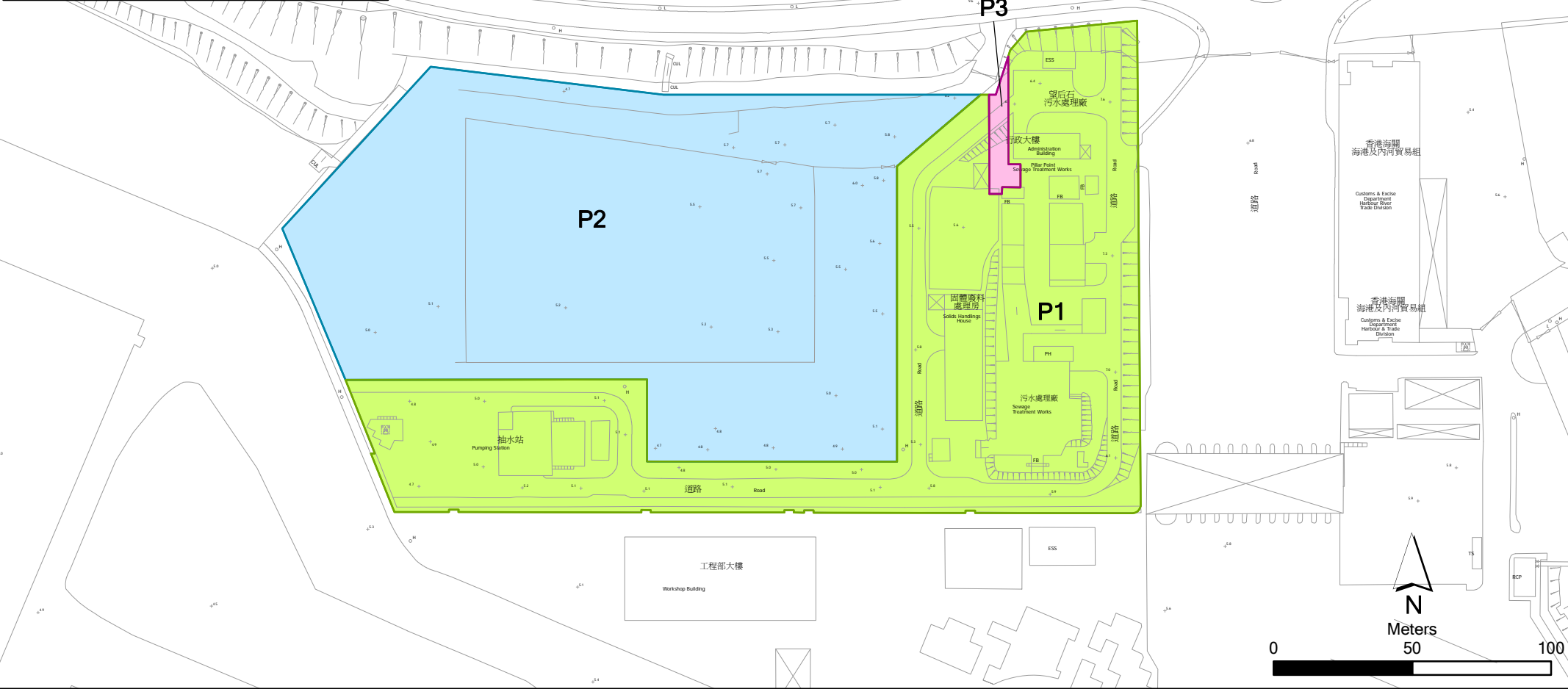
- ㉒ EXISTING SOLID HANDLING BUILDING
- ㉓ EXISTING OUTFALL PUMPING STATION
- ㉔ EXISTING TERMINAL MANHOLE

Annex B

Works Location



P1 & P3 - Works Areas within Existing PPSTW Facilities
P2 - Open Area for Construction of New Facilities at PPSTW



Annex B

Location of Works Areas

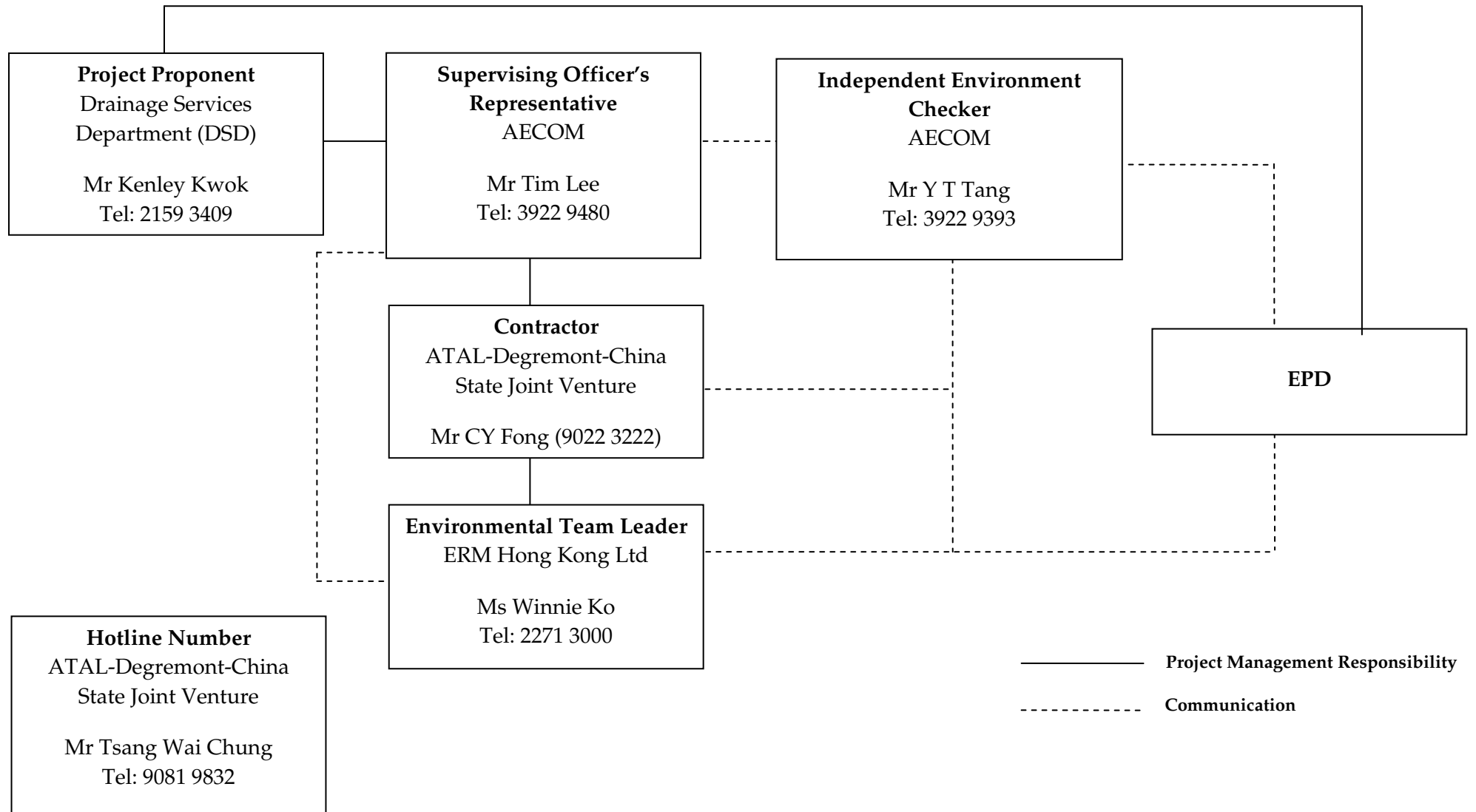
File: 0119806_location of works.mxd
Date: 15/12/2010

Environmental Resources Management

Annex C

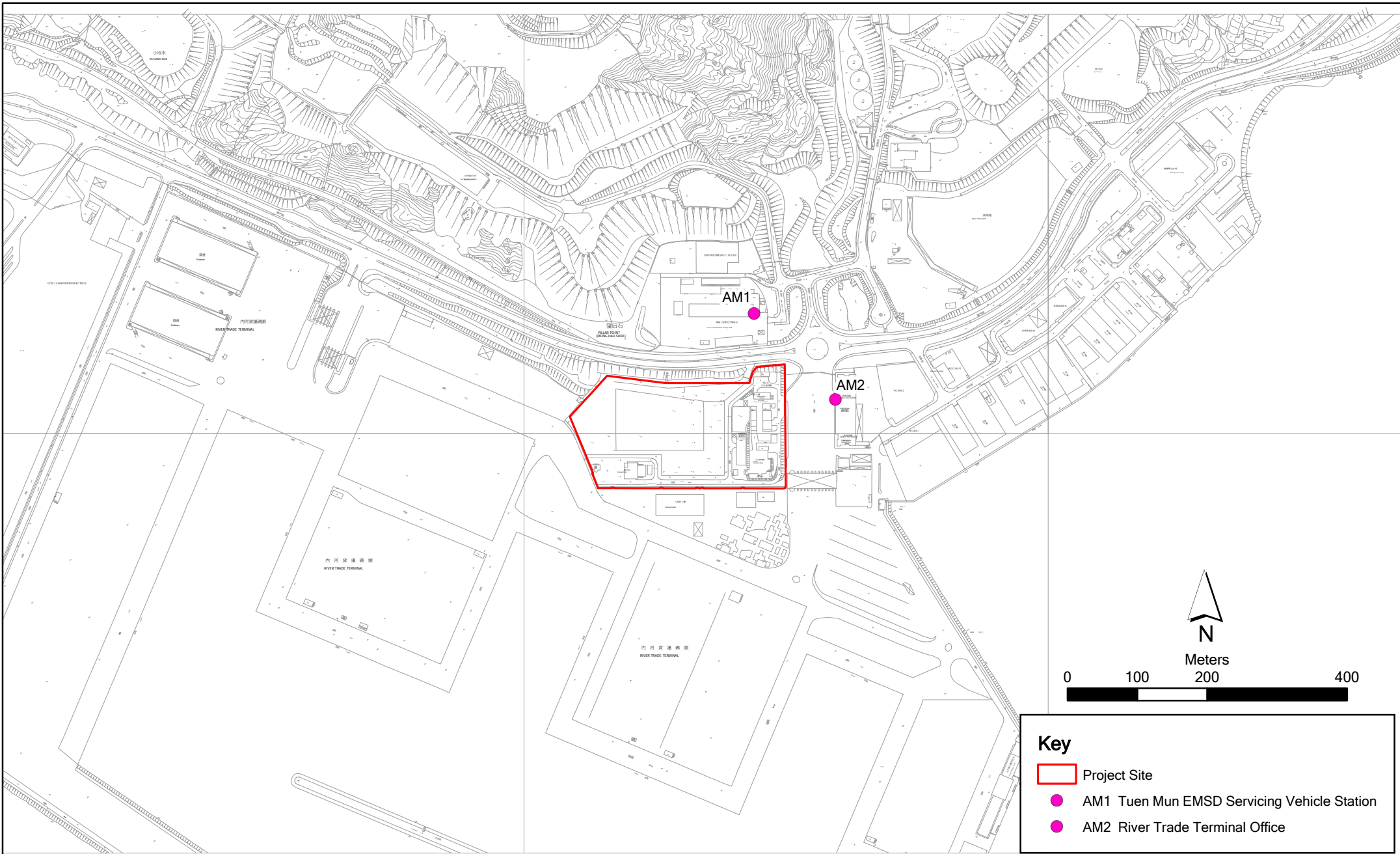
Project Organization Chart with Contact Details

Project Organization During Construction Phase (with contact details)



Annex D

Locations of Air Quality Monitoring Stations



Key

- Project Site
- AM1 Tuen Mun EMSD Servicing Vehicle Station
- AM2 River Trade Terminal Office

Annex D

Contract No. DC/2008/03 Design, Build and Operate of Pillar Point Sewage Treatment Works

File: 0119806_Site Boundary.mxd
Date: 15/12/2010

**Environmental
Resources
Management**





AM1 – Tuen Mun EMSD Servicing Vehicle Station



AM2 - River Trade Terminal Office

Annex E

Monitoring Schedule of Reporting Month and Next Month

**Contract No. DC/2008/03 - Design, Build and Operate Pillar Point Sewage Treatment Works
(Tuen Mun EMSD Servicing Vehicle Station - AM1 & River Trade Terminal Office - AM2)
March 2013**

Sunday	Monday	Tuesday	Wednesday	Thursday	Friday	Saturday
					01-Mar	02-Mar
						3X1-hr & 1X 24-hr TSP
03-Mar	04-Mar	05-Mar	06-Mar	07-Mar	08-Mar	09-Mar
					3X1-hr & 1X 24-hr TSP	
10-Mar	11-Mar	12-Mar	13-Mar	14-Mar	15-Mar	16-Mar
				3X1-hr & 1X 24-hr TSP		
17-Mar	18-Mar	19-Mar	20-Mar	21-Mar	22-Mar	23-Mar
			3X1-hr & 1X 24-hr TSP			
24-Mar	25-Mar	26-Mar	27-Mar	28-Mar	29-Mar	30-Mar
		3X1-hr & 1X 24-hr TSP			General Holiday	General Holiday
31-Mar						

**Contract No. DC/2008/03 - Design, Build and Operate Pillar Point Sewage Treatment Works
(Tuen Mun EMSD Servicing Vehicle Station - AM1 & River Trade Terminal Office - AM2)**

April 2013

Sunday	Monday	Tuesday	Wednesday	Thursday	Friday	Saturday
	01-Apr	02-Apr	03-Apr	04-Apr	05-Apr	06-Apr
	General Holiday 3X1-hr & 1X 24-hr TSP			General Holiday		3X1-hr & 1X 24-hr TSP
07-Apr	08-Apr	09-Apr	10-Apr	11-Apr	12-Apr	13-Apr
					3X1-hr & 1X 24-hr TSP	
14-Apr	15-Apr	16-Apr	17-Apr	18-Apr	19-Apr	20-Apr
				3X1-hr & 1X 24-hr TSP		
21-Apr	22-Apr	23-Apr	24-Apr	25-Apr	26-Apr	27-Apr
			3X1-hr & 1X 24-hr TSP			
28-Apr	29-Apr	30-Apr				
		3X1-hr & 1X 24-hr TSP				

Annex F

Calibration Reports for HVSs

TSP Monitoring Equipment

Monitoring Station ID	Location	Monitoring Equipment		Last Calibration Date	Next Calibration Date
<i>24-hr and 1-hr TSP</i>		HVS	Calibrator		
AM1	Tuen Mun EMSD Vehicle Servicing Station	GMW GS-2310 (S/N 7580)	CM-AIR-43 (S/N 0438320)	03 March 2013	03 May 2013
AM2	River Trade Terminal Office	GMW GS-2310 (S/N 1252)	CM-AIR-43 (S/N 0438320)	03 March 2013	03 May 2013

High-Volume TSP Sampler
5-Point Calibration Record

Location : EMSD
 Calibrated by : K.T.Ho
 Date : 03/03/2013

Sampler

Model : GMWS-2310 ACCU-VOL
 Serial Number : S/N 7580

Calibration Office and Standard Calibration Relationship

Serial Number : 2323
 Service Date : 26 Dec 2012
 Slope (m) : 2.09107
 Intercept (b) : -0.02838
 Correlation Coefficient(r) : 0.99996

Standard Condition

Pstd (hpa) : 1013
 Tstd (K) : 298.18

Calibration Condition

Pa (hpa) : 1014
 Ta(K) : 293

Resistance Plate	dH [green liquid] (inch water)	Z	X=Qstd (cubic meter/min)	IC	Y
1 18 holes	11	3.346	1.614	52	52.5
2 13 holes	9.2	3.060	1.477	46	46.4
3 10 holes	6.8	2.631	1.272	38	38.3
4 7 holes	4.2	2.068	1.002	28	28.3
5 5 holes	2.3	1.530	0.745	18	18.2

Sampler Calibration Relationship

Slope(m):39.129 Intercept(b): -11.094 Correlation Coefficient(r): 0.9997

Checked by: Magnum Fan

Date: 05/03/2013

High-Volume TSP Sampler
5-Point Calibration Record

Location : River Trade
 Calibrated by : P.F.Yeung
 Date : 03/03/2013

Sampler

Model : GMWS-2310 ACCU-VOL
 Serial Number : S/N 1252

Calibration Office and Standard Calibration Relationship

Serial Number : 2323
 Service Date : 26 Dec 2012
 Slope (m) : 2.09107
 Intercept (b) : -0.02838
 Correlation Coefficient(r) : 0.99996

Standard Condition

Pstd (hpa) : 1013
 Tstd (K) : 298.18

Calibration Condition

Pa (hpa) : 1014
 Ta(K) : 293

Resistance Plate	dH [green liquid] (inch water)	Z	X=Qstd (cubic meter/min)	IC	Y
1 18 holes	11.0	3.346	1.614	64	64.6
2 13 holes	9.0	3.027	1.461	56	56.5
3 10 holes	7.2	2.707	1.308	48	48.4
4 7 holes	4.3	2.092	1.014	35	35.3
5 5 holes	2.3	1.530	0.745	20	20.2

Sampler Calibration Relationship

Slope(m):50.290 Intercept(b): -16.504 Correlation Coefficient(r): 0.9992

Checked by: Magnum Fan

Date: 05/03/2013

Annex G

24-hour and 1-hour TSP Monitoring Results

Annex G - 24-hour and 1-hour TSP Monitoring Results

1-hour TSP Monitoring Results

Station AM1

Date	Start Time	Finish Time	Weather	TSP Concentration ($\mu\text{g}/\text{m}^3$)	Action Level ($\mu\text{g}/\text{m}^3$)	Limit Level ($\mu\text{g}/\text{m}^3$)	Site Conditions / Observations / Remarks	Temperature ($^{\circ}\text{C}$)	Wind Speed * (m/s)	Sampler ID	Filter ID
02-03-2013	13:10	14:10	Cloudy	124	343	500	Construction work in progress	18.0	*	7580	6493
	14:10	15:10	Cloudy	130	343	500	Construction work in progress	18.0	*	7580	6494
	15:10	16:10	Cloudy	144	343	500	Construction work in progress	18.0	*	7580	6495
08-03-2013	13:10	14:10	Sunny	114	343	500	Construction work in progress	22.0	*	7580	6645
	14:10	15:10	Fine	118	343	500	Construction work in progress	22.0	*	7580	6644
	15:10	16:10	Fine	103	343	500	Construction work in progress	22.0	*	7580	6643
14-03-2013	13:10	14:10	Fine	93	343	500	Construction work in progress	20.0	*	7580	6666
	14:10	15:10	Cloudy	91	343	500	Construction work in progress	20.0	*	7580	6667
	15:10	16:10	Cloudy	123	343	500	Construction work in progress	20.0	*	7580	6668
20-03-2013	13:10	14:10	Fine	108	343	500	Construction work in progress	26.0	*	7580	6689
	14:10	15:10	Fine	103	343	500	Construction work in progress	26.0	*	7580	6690
	15:10	16:10	Fine	119	343	500	Construction work in progress	26.0	*	7580	6691
26-03-2013	13:10	14:10	Cloudy	109	343	500	Construction work in progress	21.0	*	7580	6839
	14:10	15:10	Cloudy	104	343	500	Construction work in progress	21.0	*	7580	6840
	15:10	16:10	Cloudy	107	343	500	Construction work in progress	21.0	*	7580	6841
				Min.	91						
				Max.	144						
				Average	113						

* Wind Speed data is presented in the Meteorological Data table

Annex G - 24-hour and 1-hour TSP Monitoring Results

1-hour TSP Monitoring Results

Station AM2

Date	Start Time	Finish Time	Weather	TSP Concentration ($\mu\text{g}/\text{m}^3$)	Action Level ($\mu\text{g}/\text{m}^3$)	Limit Level ($\mu\text{g}/\text{m}^3$)	Site Conditions / Observations / Remarks	Temperature ($^{\circ}\text{C}$)	Wind Speed * (m/s)	Sampler ID	Filter ID
02-03-2013	13:00	14:00	Cloudy	113	383	500	Construction work in progress	18.0	*	1252	6489
	14:00	15:00	Cloudy	118	383	500	Construction work in progress	18.0	*	1252	6490
	15:00	16:00	Cloudy	129	383	500	Construction work in progress	18.0	*	1252	6491
08-03-2013	13:00	14:00	Sunny	90	383	500	Construction work in progress	22.0	*	1252	6641
	14:00	15:00	Sunny	105	383	500	Construction work in progress	22.0	*	1252	6640
	15:00	16:00	Sunny	109	383	500	Construction work in progress	22.0	*	1252	6639
14-03-2013	13:00	14:00	Cloudy	124	343	500	Construction work in progress	20.0	*	1252	6662
	14:00	15:00	Cloudy	127	343	500	Construction work in progress	20.0	*	1252	6663
	15:00	16:00	Cloudy	118	343	500	Construction work in progress	20.0	*	1252	6664
20-03-2013	13:00	14:00	Fine	113	383	500	Construction work in progress	26.0	*	1252	6685
	14:00	15:00	Fine	106	383	500	Construction work in progress	26.0	*	1252	6686
	15:00	16:00	Fine	120	383	500	Construction work in progress	26.0	*	1252	6687
26-03-2013	13:00	14:00	Cloudy	113	383	500	Construction work in progress	21.0	*	1252	6835
	14:00	15:00	Cloudy	129	383	500	Construction work in progress	21.0	*	1252	6836
	15:00	16:00	Cloudy	128	383	500	Construction work in progress	21.0	*	1252	6837
				Min.	90						
				Max.	129						
				Average	116						

* Wind Speed data is presented in the Meteorological Data table

Annex G - 24-hour and 1-hour TSP Monitoring Results

24-hour TSP Monitoring Results

Station AM1

Start		Finish		Weather	Filter Weight (g)		Elapsed Time Reading		Sampling Time (hrs)	Flow Rate (m ³ /min)			TSP Conc. (µg/m ³)	Action Level (µg/m ³)	Limit Level (µg/m ³)	Observations / Remarks	Sampler ID	Filter ID		
Date	Time	Date	Time		Initial	Final	Initial	Final		Initial	Final	Average								
02-03-2013	16:10	03-03-2013	16:10	Cloudy	2.8089	2.9559	14114.18	14138.18	24	1.24	1.24	1.24	82	183	260	Construction work in progress	7580	6496		
08-03-2013	16:10	09-03-2013	16:10	Sunny	2.7784	2.9009	14141.18	14165.18	24	1.24	1.24	1.24	68	183	260	Construction work in progress	7580	6646		
14-03-2013	16:10	15-03-2013	16:10	Cloudy	2.7842	2.9244	14168.18	14192.18	24	1.36	1.36	1.36	72	183	260	Construction work in progress	7580	6669		
20-03-2013	16:10	21-03-2013	16:10	Fine	2.7914	2.9331	14194.18	14218.18	24	1.36	1.36	1.36	72	183	260	Construction work in progress	7580	6692		
26-03-2013	16:10	27-03-2013	16:10	Cloudy	2.6879	2.8300	14221.18	14245.18	24	1.36	1.36	1.36	73	183	260	Construction work in progress	7580	6842		
												Min.	68							
												Max.	82							
												Average	73							

24-hour TSP Monitoring Results

Station AM2

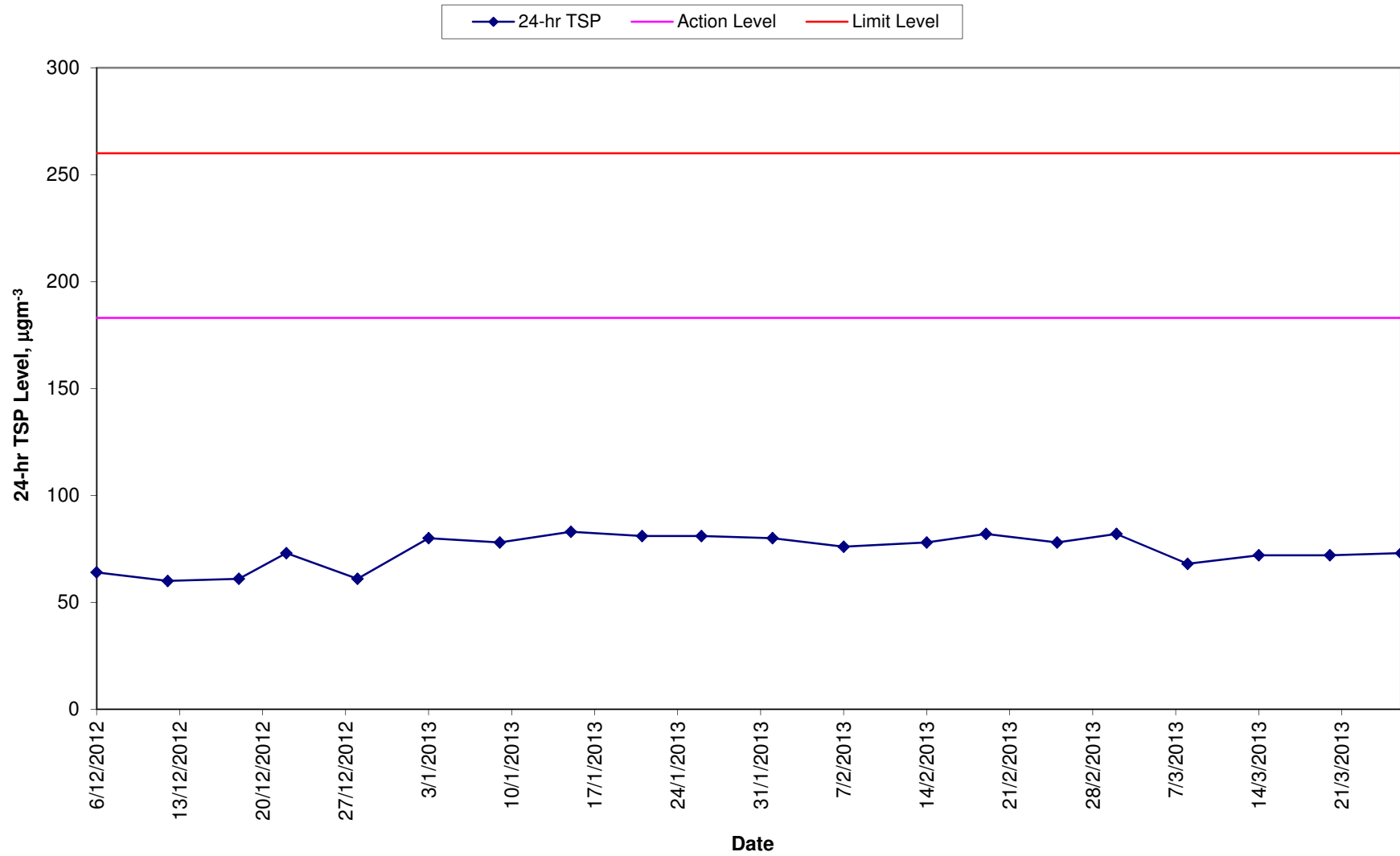
Start		Finish		Weather	Filter Weight (g)		Elapsed Time Reading		Sampling Time (hrs)	Flow Rate (m ³ /min)			TSP Conc. (µg/m ³)	Action Level (µg/m ³)	Limit Level (µg/m ³)	Observations / Remarks	Sampler ID	Filter ID		
Date	Time	Date	Time		Initial	Final	Initial	Final		Initial	Final	Average								
02-03-2013	16:00	03-03-2013	16:00	Cloudy	2.7911	2.9409	22131.20	22155.20	24	1.20	1.20	1.20	87	192	260	Construction work in progress	1252	6492		
08-03-2013	16:00	09-03-2013	16:00	Sunny	2.7866	2.9171	22158.20	22182.20	24	1.21	1.21	1.21	75	192	260	Construction work in progress	1252	6642		
14-03-2013	16:10	15-03-2013	16:10	Cloudy	2.7881	2.9307	22185.20	22209.20	24	1.21	1.21	1.21	82	183	260	Construction work in progress	7580	6665		
20-03-2013	16:00	21-03-2013	16:00	Fine	2.7839	2.9241	22212.20	22236.20	24	1.21	1.21	1.21	80	192	260	Construction work in progress	1252	6688		
26-03-2013	16:00	27-03-2013	16:00	Cloudy	2.6842	2.8411	22239.20	22263.20	24	1.21	1.21	1.21	90	192	260	Construction work in progress	1252	6838		
												Min.	75							
												Max.	90							
												Average	83							

Meteorological Data Extracted from the Hong Kong Observatory

Date	Weather	Tuen Mun Station				
		Average Air Temperature (°C)	Average Relative Humidity (%)	Total Rainfall (mm)	Average Wind Speed (km/h)	Wind Direction
02-03-2013	Cloudy	18.0	72-96	0.8	9.0	SW
03-03-2013	Cloudy	15.0	51-75	0.0	14.0	NE
08-03-2013	Sunny	22.0	25-75	0.0	8.0	S
09-03-2013	Sunny	21.0	49-78	0.0	8.0	S
14-03-2013	Cloudy	20.0	75-90	Trace	8.0	S
15-03-2013	Cloudy	20.0	63-83	0.0	12.0	SE
20-03-2013	Fine	26.0	65-91	Trace	12.0	S
21-03-2013	Fine	22.0	78-94	0.8	8.0	SW
26-03-2013	Cloudy	21.0	90-100	13.6	N/A	N/A
27-03-2013	Cloudy	20.0	81-96	1.5	N/A	N/A

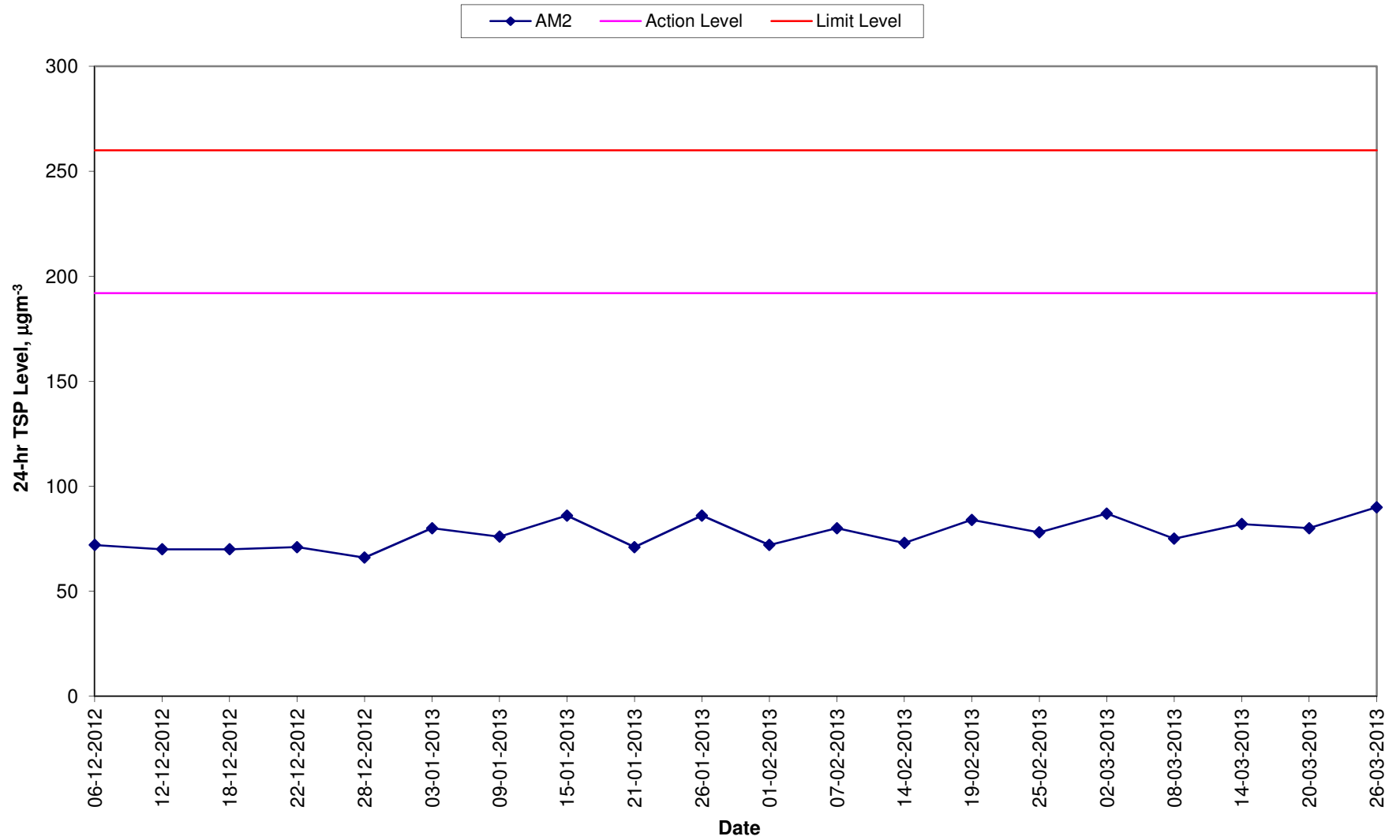
Annex G TSP Monitoring Results

**24-hr TSP Levels for the Past 4 Months
AM1 (Tuen Mun EMSD Vehicle Servicing Station)**



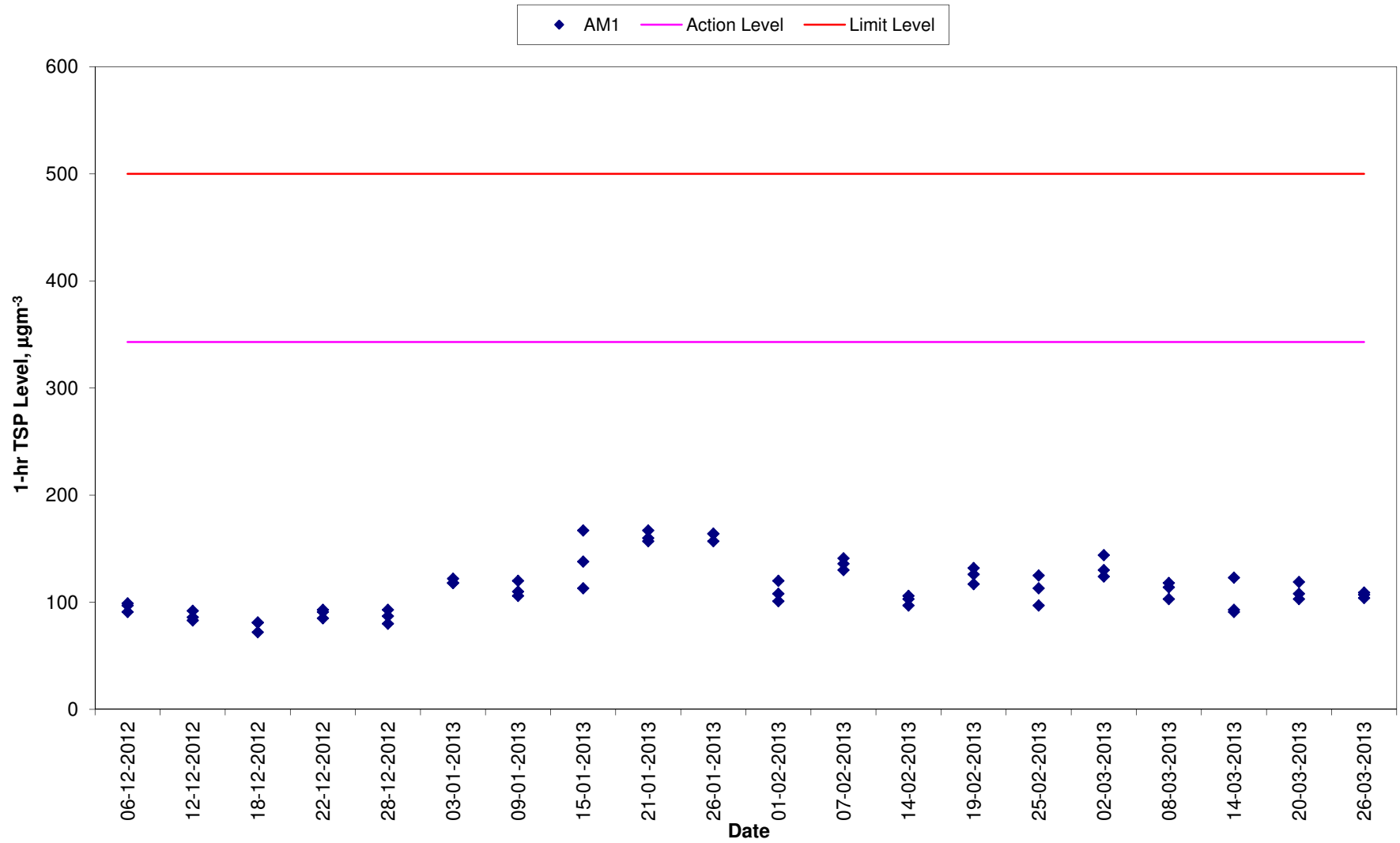
Annex G TSP Monitoring Results

24-hr TSP Levels for the Past 4 Months
AM2 (River Trade Terminal Office)



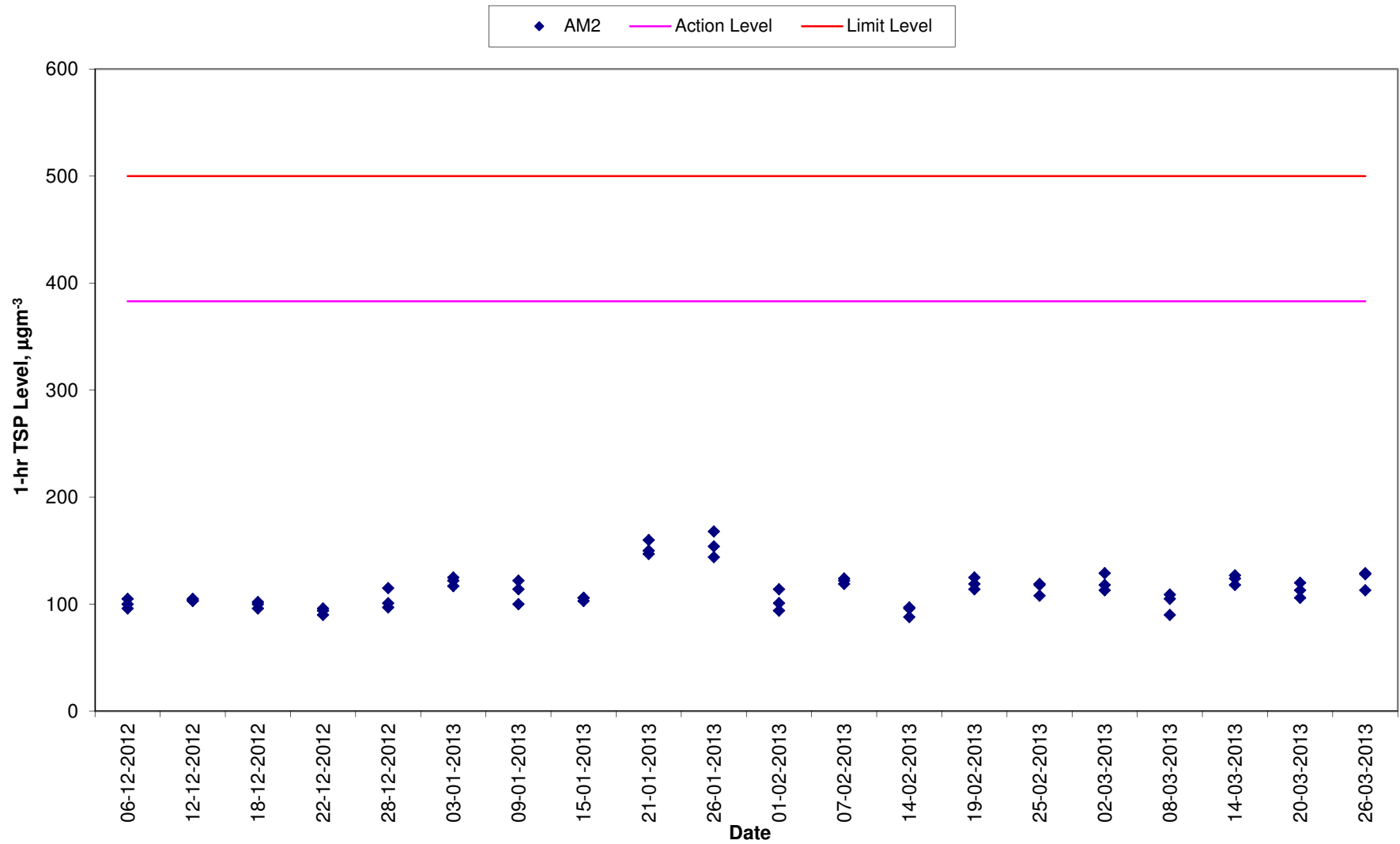
Annex G TSP Monitoring Results

1-hr TSP Levels for the Past 4 Months AM1 (Tuen Mun EMSD Vehicle Servicing Station)



Annex G TSP Monitoring Results

1-hr TSP Levels for the Past 4 Months
AM2 (River Trade Terminal Office)



Annex H

Event/Action Plan for Air Quality Monitoring

Table H1 *Event Action Plan for Air Quality Monitoring*

Action Level/Limit Level	Environmental Team Leader (ETL)	Independent Environmental Checker (IEC)	Supervising Officer Representative (SOR)	Contractor
<i>Action Level</i>				
Exceedance for one sample	<ul style="list-style-type: none"> Identify source, investigate the causes of complaint and propose remedial measures; Inform IEC and SOR; Repeat measurement to confirm findings; Increase monitoring frequency to daily. 	<ul style="list-style-type: none"> Check monitoring data submitted by ET; Check Contractor’s working method. 	<ul style="list-style-type: none"> Notify Contractor and DSD. 	<ul style="list-style-type: none"> Rectify any unacceptable practice; Amend working methods if appropriate.
Exceedance for two or more consecutive samples	<ul style="list-style-type: none"> Identify source; Inform IEC and SOR; Advise the SOR on the effectiveness of the proposed remedial measures; Repeat measurements to confirm findings; Increase monitoring frequency to daily; Discuss with IEC and Contractor on remedial actions required; If exceedance continues, arrange meeting with IEC and SOR; If exceedance stops, cease additional monitoring. 	<ul style="list-style-type: none"> Check monitoring data submitted by ET; Check Contractor’s working method; Discuss with ET and Contractor on possible remedial measures; Advise the ET on the effectiveness of the proposed remedial measures; Supervise Implementation of remedial measures. 	<ul style="list-style-type: none"> Confirm receipt of notification of exceedance in writing; Notify Contractor and DSD; Ensure remedial measures properly implemented. 	<ul style="list-style-type: none"> Submit proposals for remedial actions to IEC within three working days of notification; Implement the agreed proposals; Amend proposal if appropriate.

Action Level/Limit Level	Environmental Team Leader (ETL)	Independent Environmental Checker (IEC)	Supervising Officer Representative (SOR)	Contractor
<i>Limit Level</i>				
Exceedance for one sample	<ul style="list-style-type: none"> Identify source, investigate the causes of exceedance and propose remedial measures; Inform IEC, SOR, DSD and EPD; Repeat measurement to confirm finding; Increase monitoring frequency to daily; Assess effectiveness of Contractor's remedial actions and keep IEC, EPD, DSD and SOR informed of the results. 	<ul style="list-style-type: none"> Check monitoring data submitted by ET; Check Contractor's working method; Discuss with ET and Contractor on possible remedial measures; Advise the SOR on the effectiveness of the proposed remedial measures; Supervise implementation of remedial measures. 	<ul style="list-style-type: none"> Confirm receipt of notification of exceedance in writing; Notify Contractor; Ensure remedial measures properly implemented. 	<ul style="list-style-type: none"> Take immediate action to avoid further exceedance; Submit proposals for remedial actions to IEC within three working days of notification; Implement the agreed proposals; Amend proposal if appropriate.
Exceedance for two or more consecutive samples	<ul style="list-style-type: none"> Notify IEC, SOR, DSD and EPD; Identify source; Repeat measurement to confirm findings; Increase monitoring frequency to daily; Carry out analysis of Contractor's working procedures to determine possible mitigation to be implemented; Arrange meeting with IEC and SOR to discuss the remedial actions to be taken; Assess effectiveness of Contractor's remedial actions and keep IEC, EPD, DSD and SOR informed of the results; If exceedance stops, cease additional monitoring. 	<ul style="list-style-type: none"> Discuss amongst SOR, ET, and Contractor on the potential remedial actions; Review Contractor's remedial actions whenever necessary to assure their effectiveness and advise the SOR accordingly; Supervise the implementation of remedial measures. 	<ul style="list-style-type: none"> Confirm receipt of notification of exceedance in writing; Notify Contractor; In consolidation with the IEC, agree with the Contractor on the remedial measures to be implemented; Ensure remedial measures properly implemented; If exceedance continues, consider what portion of the work is responsible and instruct the Contractor to stop that portion of work until the exceedance is abated. 	<ul style="list-style-type: none"> Take immediate action to avoid further exceedance; Submit proposals for remedial actions to IEC within three working days of notification; Implement the agreed proposals; Resubmit proposals if problem still not under control; Stop the relevant portion of works as determined by the SOR until the exceedance is abated.

Annex I

Implementation Schedule of Mitigation Measures

Annex I Summary of Mitigation Measures Implementation Schedule

Type of Impact	Environmental Protection Measures	Location/ Timing	Status
<i>Summary of Environmental Mitigation Measures in the EIA and EM&A Manual</i>			
<i>Construction Phase</i>			
Air Quality	Dust mitigation measures stipulated in <i>the Air Pollution Control (Construction Dust) Regulation</i> shall be incorporated to control Post emission. Notice shall be given to authority prior to commencing of work.	Work sites / during construction period	Notice of works commencement was submitted to EPD on 3 August 2010.
Water Quality	The practices outlined in ProPECC PN 1/94 Construction Site Drainage should be adopted. It is recommended to install perimeter channels in the works areas to intercept runoff as site boundary prior to the commencement of any earthwork. To prevent storm runoff from washing across exposed soil surfaces, intercepting channels should be provided. Drainage channels are also required to convey site runoff to sand/silt traps and oil interceptors. Provision of regular cleaning and maintenance can ensure the normal operation of these facilities throughout the construction period. Any practical options for the diversion and re-alignment of drainage should comply with both engineering and environmental requirements in order to ensure adequate hydraulic capacity of all drains.	Work site/During the construction period	√
Water Quality	There is a need to apply to EPD for a discharge license under the WPCO for discharging effluent from the construction site. The discharge quality is required to meet the requirements specified in the discharge license. All the runoff and wastewater generated from the works areas should be treated so that it satisfies all the standards listed in the TM-DSS. Reuse and recycling of the treated effluent can minimize water consumption and reduce the effluent discharge volume. The beneficial uses of the treated effluent may include dust suppression, wheel washing and general cleaning. If monitoring of the treated effluent quality from the works areas is required during the construction phase of the Project, the monitoring should be carried out in accordance with the WPCO license which is under the ambit of regional office (RO) of EPD.	Work site/During the construction period	√ Discharge licence was awarded by EPD on 7 December 2010.
Water Quality	The construction programme should be properly planned to minimize soil excavation, if any, in rainy seasons. This prevents soil erosion from	Work site/During the construction period	<>

Type of Impact	Environmental Protection Measures	Location/ Timing	Status
	<p>exposed soil surfaces. Any exposed soil surfaces should also be properly protected to minimize dust emission. In areas where a large amount of exposed soil exists, earth bunds or sand bags should be provided. Exposed stockpiles should be covered with tarpaulin or impervious sheets at all times. The stockpiles of materials should be placed at locations away from any stream course so as to avoid releasing materials into the water bodies. Final surfaces of earthworks should be compacted and protected by permanent work. It is suggested that haul roads should be paved with concrete and the temporary access roads protected using crushed stone or gravel, wherever practicable. Wheel washing facilities should be provided at all site exists to ensure that earth, mud and debris would not be carried out of the works areas by vehicles.</p>		
Water Quality	<p>Good sites practices should be adopted to clean the rubbish and litter on the construction sites so as to prevent the rubbish and litter from spreading from the site area. It is recommended to clean the construction sites on a regular basis.</p>	Work site/ During the construction period	√
Water Quality	<p>The presence of construction workers generates sewage. It is recommended to provide sufficient chemical toilets in the works areas. The toilet facilities should be more than 30m from any watercourse. A licensed water collector should be deployed to clean the chemical toilets on a regular basis. The construction workers can also make use of the existing toilet facilities within the PPSTW as necessary.</p>	Work site/ During the construction period	√
Water Quality	<p>Notices should be posted at conspicuous locations to remind the workers not to discharge any sewage or wastewater into the nearby environment during the construction phase of the project. Regular environmental audit on the construction phase of the project. Regular environmental audit on the construction site can provide an effective control of any malpractices and can achieve continual improvement of environmental performance on site.</p>	Work site/ During the construction period	√
Waste Management	<p>Contractor must register as a chemical waste producer if chemical wastes would be produced from the construction activities. The Waste Disposal Ordinance (Cap 354) and its subsidiary regulations in particular the Waste Disposal (Chemical Waste) (General) Regulation</p>	Work site/ During the construction period	√

Type of Impact	Environmental Protection Measures	Location/ Timing	Status
	should be observed and complied with for control of chemical wastes.		
Waste Management	Any service shop and maintenance facilities should be located on hard standings within a bunded area, and stumps and oil interceptors should be provided. Maintenance of vehicles and equipment involving activities with potential for leakage and spillage should only be undertaken within the areas appropriately equipped to control these discharges.	Work site/ During the construction period	√
Waste Management	<p>Disposal of chemical wastes should be carried out in compliance with the Waste Disposal Ordinance. The Code of Practice on the Packaging, Labelling and Storage of Chemical Wastes published under the Waste Disposal Ordinance details the requirements to deal with the chemical wastes. General requirements are given as follows:</p> <ul style="list-style-type: none"> • Suitable containers should be used to hold the chemical wastes to avoid leakage or spillage during storage, handling and transport. • Chemical waste containers should be suitably labelled, to notify and warn the personnel who are handling the wastes, to avoid accidents. • Storage area should be selected at a safe location on site and adequate space should be allocated to the storage area. 	Work site/ During the construction period	<>
Waste Management	<p><i>Good Site Practices</i> Recommendations for good site practices during the construction activities include:</p> <ul style="list-style-type: none"> • Nomination of an approved person, such as a site manager, to be responsible for good site practices, arrangements for collection and effective disposal to an appropriate facility, of all wastes generated at the site • Training of site personnel in proper waste management and chemical handling procedures • Provision of sufficient waste disposal points and regular collection of waste • Appropriate measures to minimise windblown litter and dust during transportation of waste by either covering trucks or by 	Work site/ During the construction period	√

Type of Impact	Environmental Protection Measures	Location/ Timing	Status
	<p>transporting wastes in enclosed containers</p> <ul style="list-style-type: none"> • Regular cleaning and maintenance programme for drainage systems, sumps and oil interceptors. • Separation of chemical wastes for special handling and appropriate treatment at the Chemical Waste Treatment Facility. 		
Waste Management	<p><i>Waste Reduction Measures</i></p> <p>Waste reduction is best achieved at the planning and design stage, as well as by ensuring the implementation of good site practices. Recommendations to achieve waste reduction include:</p> <ul style="list-style-type: none"> • Segregation and storage of different types of waste in different containers, skips or stockpiles to enhance reuse or recycling of materials and their proper disposal. • Encourage collection of aluminium cans by providing separate labelled bins to enable this waste to be segregated from other general refuse generated by the work force • Proper storage and site practices to minimise the potential for damage or contamination of construction materials. • Plan and stock construction materials carefully to minimise amount of waste generated and avoid unnecessary generation of waste. 	Work site/ During planning & design stage, and construction stage	√
Waste Management	<p><i>General Refuse</i></p> <p>General refuse should be stored in enclosed bins or compaction units separate from C&D material. A reputable waste collector should be employed by the contractor to remove general refuse from the site, separately from C&D material. Preferably an enclosed and covered area should be provided to reduce the occurrence of 'wind blown' light material.</p>	Work site / During the construction period	√
Waste Management	<p><i>Construction and Demolition Material</i></p> <p>In order to minimise the impact resulting from collection and transportation of C&D material for off-site disposal, the excavated</p>	Work site / During design stage & construction period	√

Type of Impact	Environmental Protection Measures	Location/ Timing	Status
	<p>material generated from site formation works for the proposed new facilities and units at the STW should be reused on-site as far as practicable. The surplus excavated material should be disposed of at the designated public fill reception facility, as agreed with the Secretary of the Public Fill Committee, for other beneficial uses.</p>		
Waste Management	<p>Mitigation measures and good site practices should be followed to control potential environmental impact from handling and transportation of C&D material. The mitigation measures include:</p> <ul style="list-style-type: none"> • Where it is unavoidable to have transient stockpiles of C&D material pending collection for disposal, the transient stockpiles shall be located away from waterfront or storm drains as far as possible. • Open stockpiles of construction materials or construction wastes on-site should be covered with tarpaulin or similar fabric. • Skip hoist for material transport should be totally enclosed by impervious sheeting. • Every vehicle should be washed to remove any dusty materials from its body and wheels before leaving a construction site • The area where vehicle washing takes place and the section of the road between the washing facilities and the exit point should be paved with concrete, bituminous materials or hardcores. • The load of dusty materials carried by vehicle leaving a construction site should be covered entirely by clean impervious sheeting to ensure dust materials do not leak from the vehicle. • All dusty materials should be sprayed with water prior to any loading, unloading or transfer operation so as to maintain the dusty materials wet. • The height from which excavated materials are dropped should be controlled to a minimum practical height to limit fugitive dust generation from unloading. 	Work site / During design stage & construction period	√
Waste Management	<p>When disposing C&D material at a public filling facility, it shall be noted that the material shall only consist of earth, building debris and broken rock and concrete. The material shall be free from marine mud, household refuse, plastic, metals, industrial and chemical waste, animal</p>	Work site/ During design stage & construction period	√

Type of Impact	Environmental Protection Measures	Location/ Timing	Status
	<p>and vegetable matter, and other material considered to be unsuitable by the Filling Supervisor. In order to monitor the disposal of the surplus C&D material at the designed public fill reception facility and to control fly tipping, a trip-ticket system should be included as one of the contractual requirements and implemented by an Environmental Team undertaking the Environmental Monitoring and Audit work with reference to the ETWB TCW No. 31/2004 "Trip Ticket System for Disposal of Construction and Demolition Materials" as attached in Appendix 7-1. An Independent Environmental Checker should be responsible for auditing the results of the system.</p>		
Waste Management	<p><i>Chemical Waste</i></p> <p>If chemical wastes are produced at the construction site, the Contractor would be required to register with the EPD as a Chemical Waste Producer and to follow the guidelines stated in the Code of Practice on the Packaging, Labelling and Storage of Chemical Wastes. Good quality containers compatible with the chemical wastes should be used, and incompatible chemicals should be stored separately. Appropriate labels should be securely attached on each chemical waste container indicating the corresponding chemical characteristics of the chemical waste, such as explosive, flammable, oxidizing, irritant, toxic, harmful, corrosive, etc. The Contractor shall use a licensed collector to transport and dispose of the chemical wastes, to either the Chemical Waste Treatment Centre, or another licensed facility, in accordance with the Waste Disposal (Chemical Waste) (General) Regulation.</p>	Work site / During the construction period	√
Landscape & Visual	<p><u>Temporary Tree Nurseries</u></p> <p>Temporary tree nurseries may be set up for the transplanted tree and proposed trees at an early stage to allow small trees to grow during the construction periods. By the time when planting area becomes available, trees mature and increase in trunk & spread size. They will require minimal pruning and suffer much less damage during transplanting when comparing the travel distance from an on-site nursery to an off-site nursery.</p> <p>Besides, these trees may also be positioned as visual mitigation during</p>	Work site/ During design stage & construction period	√. A tree nursery has been set up off-site near the site office.

Type of Impact	Environmental Protection Measures	Location/ Timing	Status
	the construction period.		
Landscape & Visual	<p><u>No-intrusion Zone</u></p> <p>To maximize protection to existing trees and ground vegetation, construction contracts may designate “No-intrusion Zone” to various areas within the site boundary with rigid and durable fencing for each individual no-intrusion zone. The contractor should close monitor and restrict the site working staff not to enter the “no-intrusion zone”, even for non-direct construction activities and storage of equipment.</p>	Work site/ During design stage & construction period	√
Landscape & Visual	<p><u>Hoarding</u></p> <p>Hoarding or boundary fencing for construction shall be considered. It should be sensitively designed, subtle, camouflaged and more ‘permeable’ so that they fit into the existing environment when looking from outside.</p>	Work site/ During design stage & construction period	√
Landscape & Visual	<p><u>Dust and Erosion Control for Exposed Soil</u></p> <p>Excavation works and demolition of existing building blocks and which will be highly visible form surrounding areas should be well planned and with precautions to suppress dust. Exposed soil shall be covered or ‘camouflaged’ and watered often. Areas that are expected to be left with bare soil for a long period of time after excavation shall be properly covered with suitable protective fabric. Silt and erosion shall be controlled by ground barriers around the slope cutting area..</p>	Work site/ During design stage & construction period	√
Landscape & Visual	<p><u>Existing Tree Record Inventory</u></p> <p>All retained trees should be record photographically at the commencement of the Contract, and carefully protected during the construction period. Detailed tree protection specification shall be allowed and included in the Contract Specification, which specifying the tree protection requirement, submission and approval system, and the tree monitoring system.</p>	Work site/ During design stage & construction period	√

Type of Impact	Environmental Protection Measures	Location/ Timing	Status
Landscape & Visual	<p><u>Construction Light</u></p> <p>All security floodlights for construction sites shall be equipped with adjustable shield, frosted diffusers and reflective covers, and be carefully controlled to minimize light pollution and night-time glare to nearby residences and GIC users. The Contractor shall consider other security measures which shall minimize the visual impacts.</p>	Work site / During design stage & construction period	√
Landscape & Visual	<p><u>Tree Transplanting</u></p> <p>Apart from the 18 numbers of "<i>Leucaena leucocephala</i>", which are proposed to be felled in accordance with ETWB TCW No. 3/2006, all the affected trees shall be transplanted. Where practicable, trees shall be directly transplanted to permanent on-site locations. The location of the transplanted tree is shown in Figure 8.9.1.</p>	Work site / During design stage & construction period	√. Tree transplantation in progress.
Landscape & Visual	<p><u>Tree Compensation Ratio</u></p> <p>The total number of compensatory trees planted in the project area shall not be less than 1:1 ratios by new trees. Required numbers and locations of compensatory trees shall be determined and agreed with Government during the tree felling application process under ETWCTC 3/2006. Compensatory trees shall be at least heavy standard size to create "immediate" greening effect. 81 numbers of "<i>Cassia surattensis</i>" will be provided as the additional compensatory planting for loss of greenery in the area due to removal of the affected trees. The location of the additional compensatory planting is shown in Figure 8.9.1.</p>	Work site / During design stage & construction period	N/A
Landscape & Visual	<p><u>Re-use of Existing Soil and Advance formation of Planting Area</u></p> <p>Existing topsoil shall be re-used where possible for new planting areas within the project. Advance formation of planting area and early implementation of the plating works can minimize adverse impact on trees. The construction program shall consider using the soil removed from one phase for backfilling another. Suitable storage ground, gathering ground and mixing ground may be set up on-site as necessary.</p>	Work site / During design stage & construction period	√

Type of Impact	Environmental Protection Measures	Location/ Timing	Status
Landscape & Visual	<p><u>Establishment Period</u></p> <p>12 month establishment period for the soft landscape works will be allowed in the main contract. Most construction contracts in Hong Kong require the Contractor to carry out routine horticultural operations, including watering, pruning, weeding, pest control, replacement of dead plants etc. to ensure healthy establishment of new planting during a 12 month establishment period. This period also serves as a kind of warranty / guarantee on the quality of the plants supplied and installed by the Contractor. Monthly monitoring during the first year of establishment period is recommended.</p>	Work site/ During operation period	N/A. To be implemented during operation phase of Project.
Landscape & Visual	<p><u>Re-instatement of excavated Area</u></p> <p>All excavated area and disturbed area for utilities diversion, temporary road diversion, and pipeline works will be reinstated to former conditions, subject to applicable Government Standards.</p>	Work site / During design stage & operation period	N/A. To be implemented during operation phase of Project.
Landscape & Visual	<p><u>Appearance and Greening for the proposed structures</u></p> <p>Compatible design, construction materials and surface finishes of the proposed structure should match with the nearby existing external appearance of PPSTW buildings for achieving visual uniformity. Finishing materials shall have due consideration to form, basic color, color/ tone variation, micro-and macro-texture, and reflectivity/ light absorbance to avoid glare. Planting, such as turf, low groundcovers and climbers, may also be planted on top of these elements to provide greening and aesthetic effect.</p>	Work site / During design stage & operation period	N/A. To be implemented during operation phase of Project.
<i>Summary of Key Environmental Mitigation Measures in Contract Requirements</i>			
Air Quality	Only Ultra-low-sulphur diesel (ULSD) should be used for all diesel-operated plants and equipments on site	Work sites / during construction period	√
Air Quality and Noise	Plants and equipments of good operation conditions should be used on site.	Work sites / during construction period	√
Noise	No diesel hammers should be used for piling works	Work sites / during construction period	√
Noise	Construction Noise Permits (CNP) should be applied for works conducted outside non-restricted hours.	Work sites / during construction period	√
Noise	Quiet construction equipments and the quietest practicable working	Work sites / during construction period	√

Type of Impact	Environmental Protection Measures	Location/ Timing	Status
	methodologies should be adopted for works whenever feasible. Noise labels should be provided for air compressors. Hoods and cover panels of generators and air compressors should be closed during operation. Noise labels should be provided for air compressors and hand-held percussive breakers.		
Waste Management	Temporary works construction on site should minimize the use of timber to reduce the quantity of C&D waste generated during works period.	Work sites / during construction period	√
Landscape and Visual	Retained or to-be-transplanted trees on site should be properly protected from physical damages and soil compacts with temporary fencing or hessian armouring whenever feasible.	Work sites / during construction period	<>

Remark:

- √ Compliance of Mitigation Measures
- <> Compliance of Mitigation but need improvement
- x Non-compliance of Mitigation Measures
- ▲ Non-compliance of Mitigation Measures but rectified by ATAL-Degrémont-China State JV
- Δ Deficiency of Mitigation Measures but rectified by ATAL-Degrémont-China State JV
- N/A Not Applicable in Reporting Period

Annex J

Waste Flow Table

Contract No. : DC/2008/03 - Design, Build and Operate Pillar Point Sewage Treatment Works

Monthly Summary Waste Flow Table

Month	Actual Quantities of Inert C&D Materials (Public Fill) Generated (see Note 13)					Actual Quantities of Non-inert C&D Materials (Construction Waste) Generated (see Note 13)				
	Total Quantity Generated	Reused in the Contract	Reused in other Projects	Disposed as Public Fill	Rocks & Broken Concrete	Metals (see Note 1)	Paper / cardboard packaging (see Note 1)	Plastics (see Note 2)	Chemical Waste	Others, e.g. general refuse (see Note 3)
	tonne	tonne	tonne	tonne		kilogram	kilogram	kilogram	Litre	tonne
Nov 2010	2,248.00	0.00	0.00	2248.00	55.00	60.00	100.00	0.00	0.00	18.05 (see Note 4)
Dec 2010	11,314.00 (see Note 4)	0.00	0.00	11314.00	225.00	100.00	120.00	20.00	0.00	28.40 (see Note 4)
Jan 2011	58,383.00 (see Note 4)	0.00	0.00	58382.90	3000.00	250.00	280.00	60.00	0.00	4.59 (see Note 4)
Sub-total	71,945.00	0.00	0.00	71944.90	3280.00	410.00	500.00	80.00	0.00	51.04
Feb 2011	12,855.00	0.00	0.00	12854.70	1050.00	100.00	150.00	50.00	0.00	2.43 (see Note 4)
Mar 2011	22,859.00	0.00	0.00	22858.70	1500.00	150.00	180.00	55.00	0.00	9.02
Apr 2011	8,547.00 (see Note 7)	0.00	5,684.00(see Note 5, 7)	2863.30	550.00	50.00	30.00	15.00	0.00	5.78
Sub-total	44,261.00	0.00	5684.00	38576.70	3100.00	300.00	360.00	120.00	0.00	17.23
May 2011	6,293.00 (see Note 7)	0.00	11.00 (see Note 5, 7)	6,282.00 (see Note 7)	425.00	45.00	25.00	10.00	360.00 (see Note 7)	8.83
Jun 2011	4,587.00 (see Note 7)	0.00	0.00 (see Note 7)	4,586.00 (see Note 7)	313.00	40.00	30.00	15.00	0.00	7.10
Jul 2011	523.00	0.00	0.00	522.90	25.00	15.00	5.00	10.00	0.00	7.20
Sub-total	11,403.00	0.00	11.00	11391.50	763.00	100.00	60.00	32.00	360.00	23.13
Aug 2011	571.00 (see Note 11)	0.00	0.00	571.00 (see Note 11)	50.00	0.00	0.00	15.00	450.00 (see Note 8)	6.12
Sept 2011	235.00	0.00	0.00	235	25.00	20.00	0.00	0.00	0.00	12.15 (see Note 9)
Oct 2011	5,705.00 (see Note 10)	0.00	0.00	5,705.00 (see Note 10)	650.00	100.00	0.00	0.00	0.00	2.98
Sub-total	6,511.00	0.00	0.00	6511.00	725.00	120.00	0.00	15.00	450.00	21.25

Nov 2011	6,294.00	0.00	0.00	6294.00	775.00	50.00	0.00	0.00	0.00	44.84
Dec 2011	3,011.00	0.00	0.00	3011.00	263.00	20.00	0.00	0.00	0.00	17.14
Jan 2012	349.00	64.00	0.00	284.60	25.00	20.00	150.00	0.00	0.00	49.01
Month	Actual Quantities of Inert C&D Materials (Public Fill) Generated					Actual Quantities of Non-inert C&D Materials (Construction Waste) Generated				
	Total Quantity Generated	Reused in the Contract	Reused in other Projects	Disposed as Public Fill	Rocks & Broken Concrete	Metals (see Note 1)	Paper/ cardboard packaging (see Note 1)	Plastics (see Note 2)	Chemical Waste	Others, e.g. general refuse (see Note 3)
	tonne	tonne	tonne	tonne	tonne	kilogram	kilogram	kilogram	Litre	tonne
Sub-total	9,654.00	64.00	0.00	9589.60	1063.00	90.00	150.00	0.00	0.00	110.99
Feb 2012	3,371.00	30.00	0.00	3341.00	2810.00	150.00	0.00	0.00	0.00	48.72
Mar 2012	6,460.00	3,000.00	0.00	3459.70	625.00	30.00	0.00	0.00	0.00	41.10
April 2012	3,774.00	3,000.00	0.00	774.40	250.00	40.00	0.00	0.00	0.00	40.01
Sub-total	13,605.00	6,030.00	0.00	7575.10	3685.00	220.00	0.00	0.00	0.00	129.83
May 2012	7,936.00	5,600.00	0.00	2336.20	750.00	40.00	0.00	10.00	0.00	75.19
June 2012	13,091.00	7,500.00	0.00	5590.80	875.00	40.00	35.50	8.00	0.00	66.74
July 2012	11,972.00	8,600.00	0.00	3372.50	825.00	40.00	36.40	5.00	0.00	100.50
Sub-total	32,999.00	21,700.00	0.00	11299.50	2450.00	120.00	70.90	23.00	0.00	242.43
Aug 2012	11,660.00	11,000.00	0.00	659.80	950.00	30.00	10.00	6.00	0.00	78.77
Sept 2012	3,055.00	1,500.00	0.00	1555.38	920.00	30.00	40.00	5.00	0.00	118.80
Oct 2012	2,657.00	200.00	0.00	2457.01	500.00	30.00	59.40	8.00	0.00	124.04
Sub-total	17,372.00	12,700.00	0.00	4672.19	2370.00	90.00	109.40	19.00	0.00	321.61
Nov-2012	2,691.00	250.00	0.00	2441.01	750.00	50.00	25.00	10.00	0.00	128.08
Dec-2012	4,319.00	400.00	0.00	3919.13	200.00	60.00	20.00	15.00	0.00	165.28
Jan-13	4,442.00	100.00	0.00	4341.56	200.00	200.00	40.00	20.00	0.00	111.23
Sub-total	11,452.00	750.00	0.00	10701.70	1150.00	310.00	85.00	45.00	0.00	404.59
Feb -13	1,286.00	85.00	0.00	1201.23	50.00	180.00	35.00	16.00	0.00	99.44
Mar-13	900.00	900.00	0.00	0.00	120.00	120.00	45.00	10.00	0.00	97.43
Total	221388.00	42229.00	5695.00	173463.42	18756.00	2060.00	1415.30	363.00	810.00	1518.97

- Notes:
- (1) Metal and paper/cardboard packaging were collected by recycler for recycling.
 - (2) Plastics refer to plastic bottles/containers, plastic sheets/foam from packaging material collected by recycler for recycling.
 - (3) General refuse was disposed of at WENT by subcontractors.
 - (4) The waste flow data for November and December 2010, January and February 2011 was updated in March 2011 based on SOR's comments and has been confirmed by the Contractor.
 - (5) The inert C&D materials were reused in the Contract No. EP/SP/58/08 at Tuen Mun Tsang Tsui.
 - (6) Chemical waste was collected through the licensed chemical waste collector, Dunwell Ind. (Holdings) Ltd, with the waste collection licence number 7111-757-W0015-WC.
 - (7) The waste flow data for April, May and June 2011 was updated in August 2011 based on SOR's comments and has been confirmed by the Contractor.
 - (8) The waste flow data of chemical waste for August 2011 was updated in October 2011 based on Contractor's revised waste flow summary.
 - (9) The waste flow data of general refuse for September 2011 was updated in November 2011 based on Contractor's revised waste flow summary.
 - (10) The waste flow data of C&D material for October 2011 was updated in December 2011 based on Contractor's revised waste flow summary.
 - (11) The waste flow data of C&D material for August 2011 was updated in January 2011 based on SOR's comments and has been confirmed by the Contractor.
 - (12) The waste flow data of metal and paper/cardboard packaging for June 2011 was revised in August 2012.
 - (13) The quantity of inert and non-inert C&D material generated from May 2012 to December and imported fill material was updated by the Contractor on 6 November 2012.
 - (14) The quantity of Rocks & Broken Concrete from November 2010 to November 2012 was updated by the Contractor on 12 December 2012.
 - (15) The quantity of C&D material reused in this Contract in Oct, Nov and Dec 2012 were updated by the Contractor on 5 January 2012.

Annex K

Environmental Complaint,
Environmental Summons
and Persecution Log

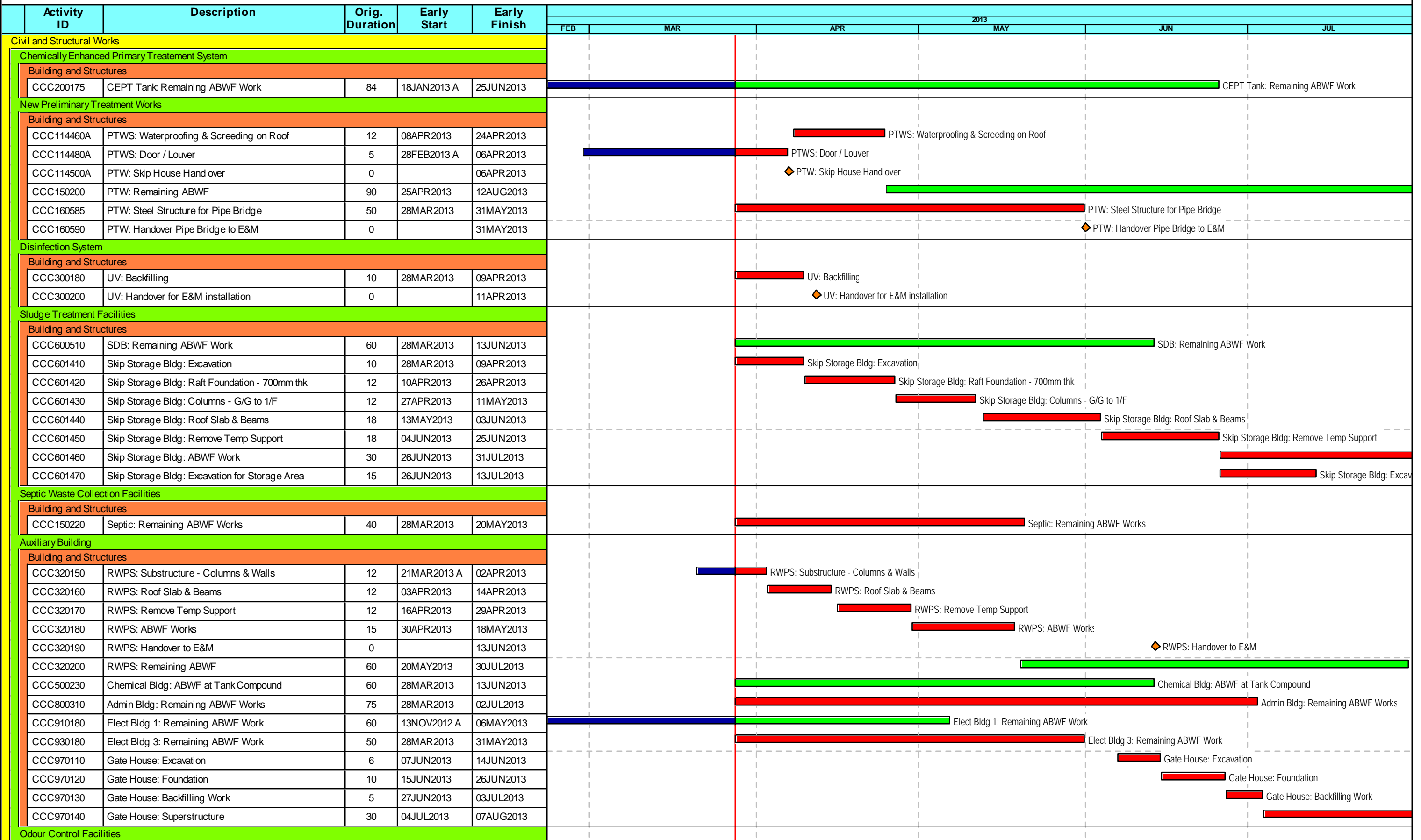
Annex K Cumulative Complaint and Summons/Prosecutions Log

Reporting Month	Number of Complaints in Reporting Month	Number of Summons/Prosecutions in Reporting Month
November 2010	0	0
December 2010	0	0
January 2011	0	0
February 2011	0	0
March 2011	0	0
April 2011	0	0
May 2011	0	0
June 2011	0	0
July 2011	0	0
August 2011	0	0
September 2011	0	0
October 2011	0	0
November 2011	0	0
December 2011	0	0
January 2012	0	0
February 2012	0	0
March 2012	0	0

Reporting Month	Number of Complaints in Reporting Month	Number of Summons/Prosecutions in Reporting Month
April 2012	0	0
May 2012	0	0
June 2012	0	0
July 2012	0	0
August 2012	0	0
September 2012	0	0
October 2012	0	0
November 2012	0	0
December 2012	0	0
January 2013	0	0
February 2013	0	0
March 2013	0	0
Overall Total	0	0

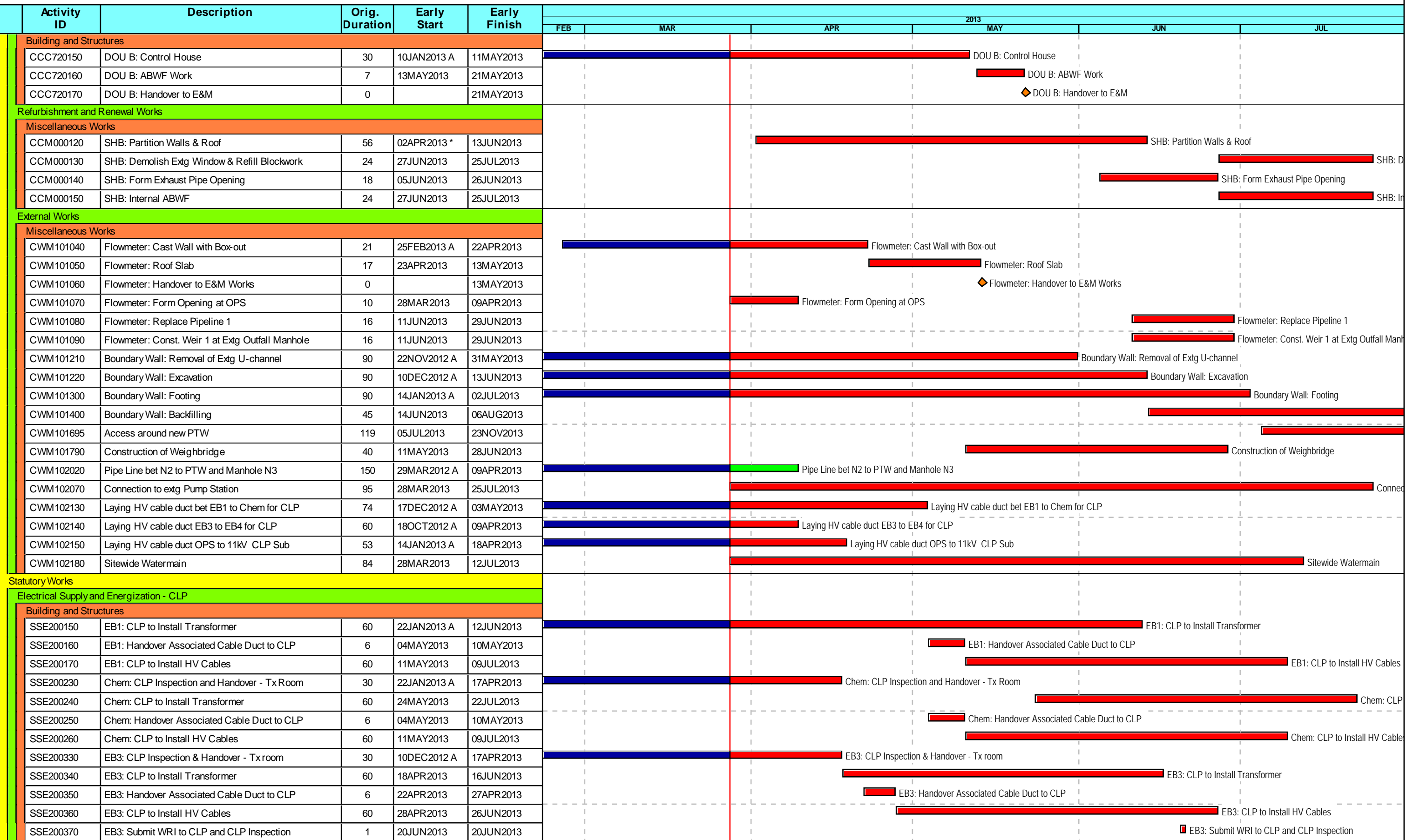
Annex L

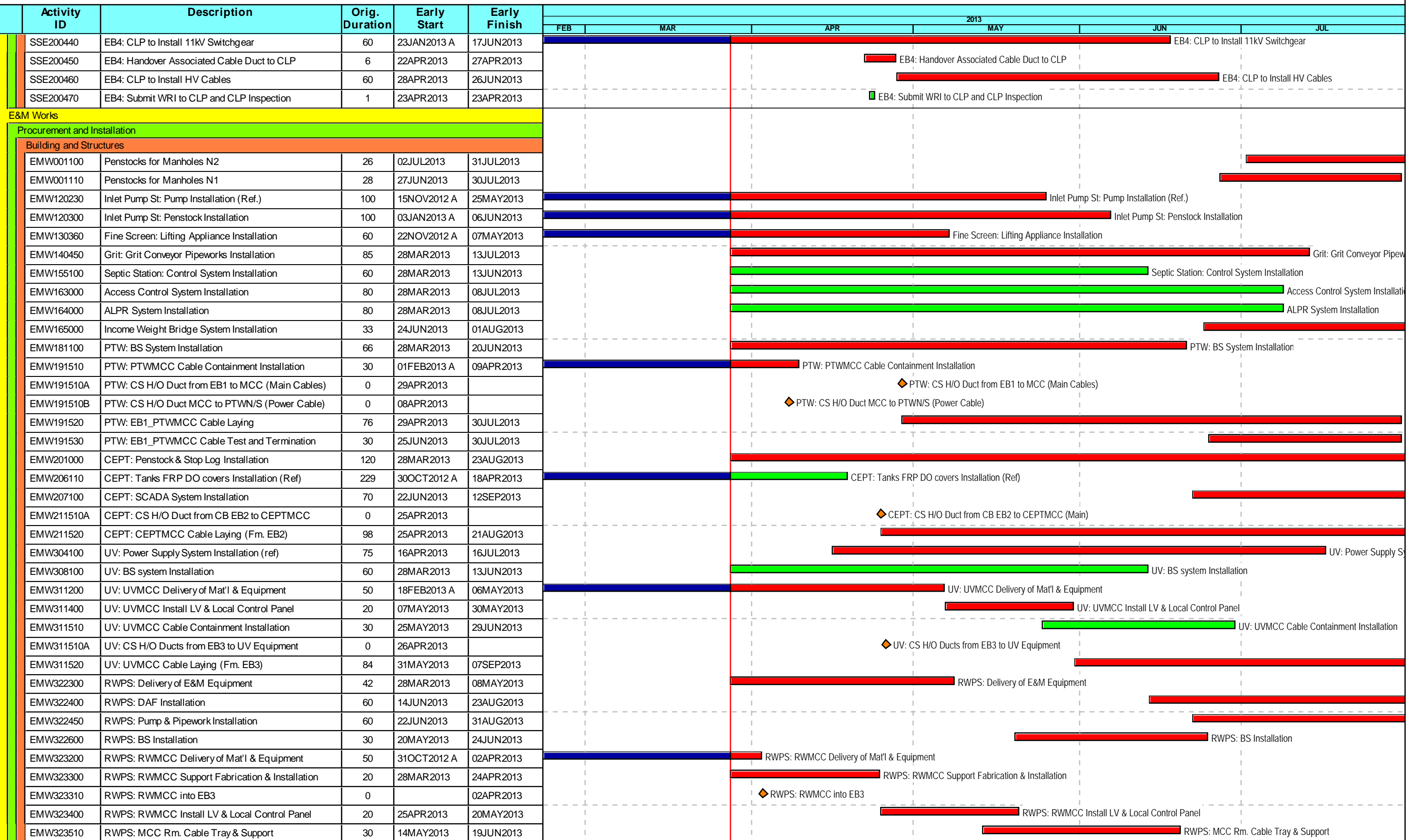
Construction Programme of the Project



Start date 14JUL2010
 Finish date 07AUG2014
 Data date 28MAR2013
 Run date 02APR2013
 Page number 1A
 Project name PR32
 Primavera Systems, Inc.

[Green bar] Early bar
 [Blue bar] Progress bar
 [Red bar] Critical bar
 [Pink bar] Summary bar
 [Diamond] Start milestone point
 [Diamond] Finish milestone point





Start date	14JUL2010
Finish date	07AUG2014
Data date	28MAR2013
Run date	02APR2013
Page number	3A
Project name	PR32
© Primavera Systems, Inc.	

█	Early bar
█	Progress bar
█	Critical bar
█	Summary bar
◆	Start milestone point
◆	Finish milestone point

Activity ID	Description	Orig. Duration	Early Start	Early Finish	2013						
					FEB	MAR	APR	MAY	JUN	JUL	
EMW503100	Chemical: Polymer System Installation	100	02JAN2013 A	31MAY2013	Chemical: Polymer System Installation						
EMW505100	Chemical: Control System Installation	60	03JUN2013	13AUG2013	Chemical: Control System Installation						
EMW506100	Chemical: BS System Installation	50	28MAR2013	31MAY2013	Chemical: BS System Installation						
EMW603100	Sludge: Centrifuge Installation (Ref)	80	28MAR2013	08JUL2013	Sludge: Centrifuge Installation (Ref)						
EMW603200	Sludge: Sludge Conveyor E&M Installation (ref.)	73	18APR2013	16JUL2013	Sludge: Sludge Conveyor E&M Installation (ref.)						
EMW604100	Sludge: Power Supply System Installation (Ref)	55	13JUN2013	16AUG2013	Sludge: Power Supply System Installation (Ref)						
EMW607100	Sludge: SCADA system Installation	100	22MAY2013	17SEP2013	Sludge: SCADA system Installation						
EMW609200	Sludge: SDMCC Delivery of Mat'l & Equipment	50	18FEB2013 A	26APR2013	Sludge: SDMCC Delivery of Mat'l & Equipment						
EMW609400	Sludge: SDMCC Install LV & Centrifuge LCP	20	27APR2013	22MAY2013	Sludge: SDMCC Install LV & Centrifuge LCP						
EMW609510	Sludge: SDMCC Cable Containment Installation	30	16MAY2013	21JUN2013	Sludge: SDMCC Cable Containment Installation						
EMW609510A	Sludge: CS H/O Duct -Chem B/EB2 to SDBMCC	0	24JUN2013		Sludge: CS H/O Duct -Chem B/EB2 to SDBMCC (Milestone)						
EMW609520	Sludge: SDMCC Cable Laying from EB2	30	24JUN2013	29JUL2013	Sludge: SDMCC Cable Laying from EB2						
EMW713500	DOU A: Odour Duct connection	120	28MAR2013	23AUG2013	DOU A: Odour Duct connection						
EMW714100	DOU A: Power Supply System Installation	70	20MAY2013	12AUG2013	DOU A: Power Supply System Installation						
EMW718100	DOU A: BS System Installation	50	28MAR2013	31MAY2013	DOU A: BS System Installation						
EMW722100	DOU B: Delivery of E&M Equipment on Site	35	18FEB2013 A	21APR2013	DOU B: Delivery of E&M Equipment on Site						
EMW723100	DOU B: Scrubber Equipment Installation (ref)	65	10APR2013	02JUL2013	DOU B: Scrubber Equipment Installation (ref)						
EMW724100	DOU B: Power & Cable Installation (MCC to Eq)	70	22JUN2013	12SEP2013	DOU B: Power & Cable Installation (MCC to Eq)						
EMW725100	DOU B: Control & Cable Installation (MCC to Eq)	60	05JUL2013	12SEP2013	DOU B: Control & Cable Installation (MCC to Eq)						
EMW728100	DOU B: BS System Installation	50	22MAY2013	20JUL2013	DOU B: BS System Installation						
EMW802200	Admin Bldg : Deliver of SCADA Eq. On site	15	28MAR2013	11APR2013	Admin Bldg : Deliver of SCADA Eq. On site						
EMW802250	All Area:: Delivery of ELV Eq. On site	30	15NOV2012 A	28MAR2013	All Area:: Delivery of ELV Eq. On site						
EMW802300	Admin Bldg : SCADA Equipment Installation	75	16APR2013	16JUL2013	Admin Bldg : SCADA Equipment Installation						
EMW802302	Admin Bldg : SCADA Installation - Rack and conso	25	28MAR2013	30APR2013	Admin Bldg : SCADA Installation - Rack and conso						
EMW802304	Admin Bldg : SCADA Installation - Workstation	25	02MAY2013	31MAY2013	Admin Bldg : SCADA Installation - Workstation						
EMW802306	Admin Bldg : SCADA Installation - Wiring & Connc	25	01JUN2013	02JUL2013	Admin Bldg : SCADA Installation - Wiring & Connc						
EMW802350	Admin Bldg : ELV Equipment Installation	90	28MAR2013	19JUL2013	Admin Bldg : ELV Equipment Installation						
EMW803290A	Admin Bldg Service: CS H/O Ducts from EB1	0	24JUN2013		Admin Bldg Service: CS H/O Ducts from EB1 (Milestone)						
EMW803290B	Admin Bldg Service: Main cable laying from EB1	30	24JUN2013	29JUL2013	Admin Bldg Service: Main cable laying from EB1						
EMW811200	SHB Bldg: Delivery of E&M Eq. On site	60	28MAR2013	26MAY2013	SHB Bldg: Delivery of E&M Eq. On site						
EMW821110	Flowmeter: E&M Installation (Ref.)	48	02JUL2013	26AUG2013	Flowmeter: E&M Installation (Ref.)						
EMW821210	Flowmeter: E&M Aux. Installation (Ref)	48	02JUL2013	26AUG2013	Flowmeter: E&M Aux. Installation (Ref)						
EMW941320	EB 1: MCC Rm. Civil Defect Rectify Water leakage	10	13NOV2012 A	17APR2013	EB 1: MCC Rm. Civil Defect Rectify Water leakage						
EMW941325	EB 1: MCC Rm. Civil Water leakage rectified	0		17APR2013	EB 1: MCC Rm. Civil Water leakage rectified (Milestone)						
EMW941340	EB 1: MCC Rm. Install LV & Local Control Panel	40	18APR2013	05JUN2013	EB 1: MCC Rm. Install LV & Local Control Panel						
EMW941510	EB 1: MCC Rm. Cable Containment Installation	40	15MAY2013	03JUL2013	EB 1: MCC Rm. Cable Containment Installation						
EMW941520	EB 1: MCC Rm. Cable Laying	30	15JUN2013	20JUL2013	EB 1: MCC Rm. Cable Laying						
EMW941650	Elect Bldg 1: BS Installation in new extension	40	28MAR2013	20MAY2013	Elect Bldg 1: BS Installation in new extension						
EMW942200	CB Main SW Rm Delivery of Mat'l & Equipment	40	25JAN2013 A	28MAR2013	CB Main SW Rm Delivery of Mat'l & Equipment						
EMW942400	CB Main SW Rm Install LV & Local Control Panel	50	28MAR2013	31MAY2013	CB Main SW Rm Install LV & Local Control Panel						
EMW942510	CB Main SW Rm Cable Containment Installation	60	28MAR2013	13JUN2013	CB Main SW Rm Cable Containment Installation						
EMW942520	CB Main SW Rm Cable Laying	40	30MAY2013	17JUL2013	CB Main SW Rm Cable Laying						
EMW942530	CB Main SW Rm: Cable Test and Termination	40	18JUN2013	03AUG2013	CB Main SW Rm: Cable Test and Termination						

Start date 14JUL2010
 Finish date 07AUG2014
 Data date 28MAR2013
 Run date 02APR2013
 Page number 4A
 Project name PR32
 Primavera Systems, Inc.

█ Early bar
█ Progress bar
█ Critical bar
█ Summary bar
◆ Start milestone point
◆ Finish milestone point

