

ATAL-Degrémont-China State Joint Venture

Contract No. DC/2008/03
Design, Build and Operate Pillar
Point Sewage Treatment Works:
*Eighth Quarterly EM&A Summary
Report*

December 2012

Environmental Resources Management

16/F, DCH Commercial Centre,
25 Westlands Road,
Quarry Bay, Hong Kong
Telephone: (852) 2271 3000
Facsimile: (852) 2723 5660
E-mail: post.hk@erm.com
<http://www.erm.com>

ATAL-Degrémont-China State Joint Venture

Contract No. DC/2008/03
Design, Build and Operate Pillar
Point Sewage Treatment Works:
*Eighth Quarterly EM&A Summary
Report*

December 2012

Reference 0119806

For and on behalf of ERM-Hong Kong, Limited	
Approved by:	Frank Wan
Signed:	
Position:	Partner
Certified by:	 (Environmental Team Leader – Winnie Ko)
Certified by:	 (Registered [] Christina Ip)
Date:	24 December 2012

Your Ref:
Our Ref: 60017423/C/iyys12122401

By Hand & By Fax (2833 9162)

Drainage Services Department
Sewage Services Branch
Harbour Area Treatment Scheme Division
5/F., Western Magistracy,
2A Pok Fu Lam Road,
Hong Kong.

Attn: Mr. Kenley C.K. KWOK (T: 2159 3409)

24 December 2012

Dear Sir,

**Contract No. DC/2008/03
Design, Build and Operate
Pillar Point Sewage Treatment Works**

Quarterly EM&A Summary Report for August 2012 to October 2012

Reference is made to Environmental Team (ET)'s draft of the Quarterly EM&A Summary Report for August 2012 to October 2012 provided by email on 19 and 24 December 2012. We have no further comment.

Should you have any queries, please feel free to contact the undersigned at 3922 9393.

Yours faithfully,

For and on behalf of
AECOM Asia Co. Ltd.



Y T Tang
Independent Environmental Checker

c.c. AECOM – Mr. Tim Lee
ERM – Ms. Winnie Ko
ATAL–Degremont–China State JV – Mr. C.Y. Fong

(Fax No. 2317 7609)
(Fax No. 2723 5660)
(Fax No. 2811 3321)

CONTENTS

	<i>EXECUTIVE SUMMARY</i>	<i>I</i>
<i>1</i>	<i>INTRODUCTION</i>	<i>1</i>
<i>1.1</i>	<i>PURPOSE OF THE REPORT</i>	<i>1</i>
<i>1.2</i>	<i>STRUCTURE OF THE REPORT</i>	<i>1</i>
<i>2</i>	<i>PROJECT INFORMATION</i>	<i>3</i>
<i>2.1</i>	<i>BACKGROUND</i>	<i>3</i>
<i>2.2</i>	<i>GENERAL SITE DESCRIPTION</i>	<i>4</i>
<i>2.3</i>	<i>CONSTRUCTION ACTIVITIES</i>	<i>4</i>
<i>2.4</i>	<i>PROJECT ORGANISATION AND MANAGEMENT STRUCTURE</i>	<i>4</i>
<i>2.5</i>	<i>STATUS OF ENVIRONMENTAL APPROVAL DOCUMENTS</i>	<i>4</i>
<i>3</i>	<i>ENVIRONMENTAL MONITORING METHODOLOGY</i>	<i>6</i>
<i>3.1</i>	<i>AIR QUALITY MONITORING</i>	<i>6</i>
<i>3.2</i>	<i>LANDSCAPE AND VISUAL MONITORING</i>	<i>7</i>
<i>3.3</i>	<i>ENVIRONMENTAL MITIGATION MEASURES AND ENVIRONMENTAL REQUIREMENTS IN CONTRACT</i>	<i>7</i>
<i>4</i>	<i>IMPLEMENTATION STATUS ON ENVIRONMENTAL PROTECTION REQUIREMENTS</i>	<i>8</i>
<i>5</i>	<i>MONITORING RESULTS</i>	<i>9</i>
<i>5.1</i>	<i>AIR QUALITY</i>	<i>9</i>
<i>6</i>	<i>WASTE MANAGEMENT</i>	<i>10</i>
<i>7</i>	<i>ENVIRONMENTAL INSPECTIONS</i>	<i>11</i>
<i>7.1</i>	<i>WEEKLY SITE AUDITS</i>	<i>11</i>
<i>7.2</i>	<i>LANDSCAPE AND VISUAL MONITORING</i>	<i>11</i>
<i>7.3</i>	<i>EFFECTIVENESS OF MITIGATION MEASURES AND MONITORING</i>	<i>12</i>
<i>8</i>	<i>ENVIRONMENTAL NON-CONFORMANCE</i>	<i>13</i>
<i>9</i>	<i>REVIEW OF THE EM&A DATA AND EIA PREDICTIONS</i>	<i>14</i>
<i>9.1</i>	<i>AIR QUALITY</i>	<i>14</i>
<i>9.2</i>	<i>WASTE MANAGEMENT</i>	<i>14</i>
<i>9.3</i>	<i>CONCLUSION OF REVIEW</i>	<i>15</i>
<i>10</i>	<i>CONCLUSIONS</i>	<i>16</i>

LIST OF TABLES

Table 2.1	Summary of Construction Activities Undertaken in Reporting Period
Table 2.2	Summary of Environmental Licensing, Notification and Permit Status
Table 3.1	Construction Phase Air Monitoring Locations
Table 3.2	Construction Phase Air Quality Monitoring Parameters and Frequency
Table 3.3	Action and Limit Levels for Air Quality
Table 3.4	TSP Monitoring Equipment
Table 6.1	Quantities of Waste Generated from the Project
Table 9.1	Comparison of the HKAQO and Air Quality Monitoring Results
Table 9.2	Quantity of Actual Amount of C&D Materials, General Wastes and Chemical Wastes Generated and EIA Estimation

LIST OF ANNEXES

Annex A	Location of Project
Annex B	Works Location
Annex C	Project Organization Chart and Contact Detail
Annex D	Locations of Air Quality Monitoring Stations
Annex E	Monitoring Schedule
Annex F	24-hour and 1-hour TSP Monitoring Results
Annex G	(Not Used)
Annex H	Event /Action Plan for Air Quality Monitoring
Annex I	Implementation Schedule of Mitigation Measures
Annex J	Waste Flow Table
Annex K	Environmental complaint, Environmental Summons and Prosecution Log

EXECUTIVE SUMMARY

The construction works of *DC/2008/03 of Design, Build and Operate Pillar Point Sewage Treatment Works (the Project)* commenced on 13 November 2010. This is the eighth quarterly Environmental Monitoring and Audit (EM&A) summary report presenting the EM&A works carried out during the period from 1 August to 31 October 2012 in accordance with the EM&A Manual.

Environmental Monitoring and Audit Progress

A summary of the monitoring activities undertaken in this reporting period is listed below:

- 24-hour TSP Monitoring at each monitoring station (AM1 and AM2) 15 sets
- 1-hour TSP Monitoring at each monitoring station (AM1 and AM2) 45 sets
- Joint Environmental Site Inspection 13 times
- Landscape & Visual Monitoring 3 times

Air Quality

No exceedance was recorded during the reporting period.

Waste Management

Waste generated from this Project includes inert construction and demolition (C&D) materials (public fill) and non-inert C&D materials (construction wastes).

Environmental Exceedance/Non-conformance/Compliant/Summons and Prosecution

No exceedance was recorded during the reporting period.

No non-compliance event was recorded during the reporting period.

No environmental complaint and summon/prosecution was received in this reporting period.

1 INTRODUCTION

ERM-Hong Kong, Limited (ERM) has been appointed by ATAL – Degremont – China State Joint Venture (ADC-JV) (the Contractor) as the Environmental Team (ET) to undertake Environmental Monitoring and Audit (EM&A) programme for the Contract No. *DC/2008/03 of Design, Build and Operate Pillar Point Sewage Treatment Works (the Project)*.

1.1 PURPOSE OF THE REPORT

This is the eighth quarterly EM&A summary report, which summarizes the impact monitoring results and audit findings for the EM&A programme during the reporting period from **1 August 2012 to 31 October 2012**.

1.2 STRUCTURE OF THE REPORT

The structure of the report is as follows:

Section 1 : **Introduction**

It details the scope and structure of the report.

Section 2 : **Project Information**

It summarises the background and scope of the Project, site description, project organization, construction programme, the construction works undertaken and status of Environmental Permits (EP)/licences over the construction phase of the Project.

Section 3 : **Environmental Monitoring Requirements**

It summarises the environmental monitoring including monitoring parameters, programmes, frequency and locations, Action and Limit Levels, Event/Action Plans, environmental mitigation measures as recommended in the approved EIA report, EP and relevant environmental requirements stated in the Contract Specification.

Section 4 : **Implementation Status on Environmental Mitigation Measures**

It summarises the implementation of environmental protection measures during the reporting period.

Section 5 : **Monitoring Results**

It summarises the monitoring results obtained in the reporting period.

Section 6 : **Waste Management**

It summarises the quantity of public fill and construction waste generated in the reporting period

Section 7 : **Environmental Site Inspection**

It summarises the audit findings of the weekly site inspections undertaken within the reporting period.

Section 8 : **Environmental Non-conformance**

It summarises any exceedance of environmental performance standard, and environmental complaints and environmental summons received within the reporting period.

Section 9 : **Review of the EM&A Data and Predictions**

It compares the monitoring data and waste quantity against predictions in the approved Project EIA report.

Section 10 : **Conclusions**

2.1 BACKGROUND

The existing Pillar Point Sewage Treatment Works (PPSTW) is located to the north of the Tuen Mun River Trade Terminal and is abutting the Lung Mun Road to the north. It is a preliminary treatment works with screening and grit removal processes with treated effluent discharged to the sea (North Western Water Control Zone) via a twin submarine outfall. The *Review of the Tuen Mun and Tsing Yi Sewerage Master Plan (RTMTYSMP)*, commissioned in February 1999, recommended that the sewage treatment capacity be expanded and the plant be upgraded to chemically enhanced primary treatment (CEPT) with disinfection in order to cater for the projected ultimate population and planned developments in the Tuen Mun area, and to improve the effluent quality and hence to reduce the pollution loadings to the receiving waters.

The upgrading of the PPSTW comprises the following works:

- expanding the treatment capacity of the existing PPSTW to cope with the increased peak wet-weather sewage flow in Tuen Mun area;
- upgrading the sewage treatment level of the existing PPSTW to incorporate chemical treatment with disinfection at minimum removal rates of 70%, 55% and 99.9% of suspended solids (SS), biochemical oxygen demand (BOD) and *E.coli*, respectively;
- upgrading existing septic waste reception facilities at PPSTW; and
- providing and upgrading ancillary facilities including the administration building, workshop, laboratory, odour control facilities, sludge handling and dewatering facilities, access roads and minor landscaping works within the STW for the operation and maintenance of the upgraded STW.

The potential environmental impacts of the Project have been studied in the “*Upgrading of Pillar Point Sewage Treatment Works*” (EIAO Register No: AEIAR-145/2008). The EIA was approved on 10 June 2008 under the *Environmental Impact Assessment Ordinance* (EIAO) and an Environmental Permit (EP-321/2008) for the works was granted on 17 November 2008. Under the requirements of Condition 3.1 of EP-322/2008, an EM&A programme as set out in the EM&A Manual is required to be implemented.

The construction works commenced on 13 November 2010 and are scheduled for completion by 2014.

2.2 GENERAL SITE DESCRIPTION

The open area adjacent to the existing PPSTW has been designated for the upgrading works. The layout of the upgrading works is illustrated in *Annex A*.

2.3 CONSTRUCTION ACTIVITIES

A summary of the major construction activities undertaken in this quarter is shown in *Table 2.1*. The locations of the construction activities are shown in *Annex B*.

Table 2.1 Summary of Construction Activities undertaken in Reporting Period

Construction Activities Undertaken
<ul style="list-style-type: none">• Constructing the root slab, wall, columns and beams at the Administration Building;• Constructing structure, water tank and backfilling at the Sludge Dewatering Building;• Constructing a wall and floor slab at the PTW area of P2;• Conducting water tests, constructing a wall and floor slab at the CEPT area of P2• Finishing work at the Electrical Building No.1;• Constructing a manhole and trench walls at the UV building;• Constructing a floor slab, conducting water tests and backfilling at the Septic Waste Reception Station;• Constructing a wall and roof at the Reuse Water Pump Room;• Backfilling and constructing a raft slab at the DOUA and the Chemical Building;• Constructing a floor slab and trench at the Electrical building No.3 and No.4; and• Backfilling and drainage works for the whole site.

2.4 PROJECT ORGANISATION AND MANAGEMENT STRUCTURE

The project organisation chart, hotline number and contact details are shown in *Annex C*.

2.5 STATUS OF ENVIRONMENTAL APPROVAL DOCUMENTS

A summary of the valid permits, licences, and/or notifications on environmental protection for this Project is presented in *Table 2.2*.

Table 2.2 *Summary of Environmental Licensing, Notification and Permit Status*

Permit/ Licenses/ Notification	Reference	Validity Period	Remarks
Environmental Permit	EP-321/2008	Throughout the Contract	Permit granted on 17 November 2008.
Notification of Construction Works under Air Pollution Control (Construction Dust) Regulation	Ref No. 308136	Throughout the Contract	-
Water Discharge License	WT00008027-2010	Till 31 December 2015	Wastewater discharge licence was issued by EPD on 7 December 2010.
Construction Noise Permit	GW-RW0535-12	28 July 2012 – 27 January 2013	-
Chemical Waste Producer Registration	5213-421-A2620-01	Throughout the Contract	Licence approved on 28 October 2010

3.1 AIR QUALITY MONITORING

3.1.1 Monitoring Location

The proposed air quality monitoring stations for the construction phase of the Project, as recommended in the approved EM&A Manual, are given in *Table 3.1* and shown in *Annex D*. The proposed locations (AM1 and AM2) have been agreed with the Drainage Services Department (DSD), Environmental Protection Department (EPD) and the Independent Environmental Checker (IEC).

Table 3.1 Construction Phase Air Monitoring Locations

Monitoring ID	Air Quality Monitoring Station
AM1	Tuen Mun EMSD Servicing Vehicle Station
AM2	River Trade Terminal Office

3.1.2 Monitoring Parameters and Frequency

The construction phase air quality monitoring was conducted at the designated monitoring stations in accordance with the requirements stipulated in the EM&A Manual. 1-hour and 24-hour TSP levels were monitored at the frequency and duration shown in *Table 3.2*.

Table 3.2 Construction Phase Air Quality Monitoring Parameters and Frequency

Parameter	Frequency
24-hour TSP	Once every 6 days
1-hour TSP	3 times every 6 days

3.1.3 Action and Limit Levels

The Action and Limit levels have been established and are presented in *Table 3.3*.

Table 3.3 Action and Limit Levels for Air Quality

Parameter	Air Monitoring Station	Action Level, μgm^{-3}	Limit Level, μgm^{-3}
24-hour TSP	AM1	183	260
	AM2	192	260
1-hour TSP	AM1	343	500
	AM2	383	500

3.1.4 Event and Action Plan

The Event/Action Plan (EAP) for air quality monitoring is presented in *Annex H*.

3.2 *LANDSCAPE AND VISUAL MONITORING*

In accordance with the EM&A Manual, monthly landscape and visual monitoring is required to ensure that the design, implementation and maintenance of landscape and visual mitigation measures recommended in the approved EIA Report are fully achieved. The monitoring procedures and criteria as described in the EM&A Manual were adopted.

3.3 *ENVIRONMENTAL MITIGATION MEASURES AND ENVIRONMENTAL REQUIREMENTS IN CONTRACT*

All relevant environmental mitigation measures listed in the EIA Report and EM&A Manual as well as the specific environmental requirements stated in the Contract Specification are summarised in *Annex I*. A summary of the key environmental mitigation measures implemented as per the Contract Requirements is also presented in *Annex I*.

IMPLEMENTATION STATUS ON ENVIRONMENTAL PROTECTION REQUIREMENTS

The Contractor has implemented environmental mitigation measures and requirements as stated in the EIA Report, EM&A Manual and EP. The implementation status of the measures during the reporting period is summarised in *Annex I*.

5.1***AIR QUALITY***

A total of 15 sets of 24-hour and 45 sets of 1-hour TSP measurements were carried out at each of the monitoring stations (AM1 and AM2) during the reporting period. The monitoring data for 24-hour TSP and 1-hour TSP together with graphical presentations for the past four months are presented in *Annex F*. The weather conditions during the monitoring period varied from sunny to cloudy. The local impacts near the monitoring stations of AM1 and AM2 were mainly associated with vehicular emissions. No exceedance of the Action and Limit Level of 1-hr and 24-hr TSP was recorded during the reporting period.

Wastes generated from this Project include inert construction and demolition (C&D) materials (public fill) and non-inert C&D materials (construction waste). Construction waste comprises general refuse, metals and paper/cardboard packaging materials. Metals generated from the Project are also grouped into construction waste as the materials were not disposed of with others at public fill. Reference has been made to the Monthly Summary Waste Flow Table prepared by the Contractor (*Annex J*). With reference to relevant handling records and trip tickets of this Project, the quantities of different types of waste generated in the reporting period are summarised in *Table 6.1*. The public fill and construction waste generated from the Project were disposed of at the Tuen Mun Area 38 Fill Bank and WENT Landfill, respectively. 90 kg of metals, 109 kg of paper/cardboard packaging and 19 kg of plastics were sent to recyclers for recycling during the reporting period. 2,370 tonnes of rocks & broken concrete were generated in reporting period.

Table 6.1 *Quantities of Waste Generated from the Project*

Month / Year	Quantity ^(e)			
	Total Inert C&D Materials Generated ^(a)	Non-inert C&D Materials ^(b)		
		C&D Materials Recycled ^(c)	C&D Materials Disposed of at Landfill ^(d)	Chemical Waste
	tonne	kilogram	tonne	Litre
August 2012	11,660	46	78.77	0 L
September 2012	3,055	75	118.80	0 L
October 2012	2,457	97	124.04	0 L

Notes:

- (a) Inert C&D materials (public fill) include bricks, concrete, building debris, rubble and excavated soil. The public fill were disposed of at the Tuen Mun Area 38 Fill Bank.
- (b) Non-inert C&D materials (construction waste) include metals, paper / cardboard packaging waste, plastics and other wastes such as general refuse. Metals generated from the Project are grouped into construction wastes as the materials were not disposed of with others at the public fill.
- (c) Construction wastes other than metals and paper/cardboard packaging were disposed of at WENT Landfill. 90 kg of metals, 109 kg of paper/cardboard packaging and 19 kg of plastics were sent to recyclers for recycling during the reporting period.
- (d) Construction wastes (eg. General refuse) other than metals, paper/cardboard packaging, plastics and chemicals were disposed of at WENT Landfill by subcontractors.
- (e) The quantity of waste generated in August, September and October was updated by the Contractor on 12 December 2012.

7 ENVIRONMENTAL INSPECTIONS

7.1 WEEKLY SITE AUDITS

Thirteen site inspections were conducted during the reporting period. There was no non-compliance recorded during the site inspections. Follow-up actions were undertaken as reported by the Contractor and observed in the subsequent weekly site inspections conducted in the reporting period.

August 2012

Joint site inspections were conducted by representatives of the Contractor, the SOR and the ET on 3, 9, 17, 24 and 31 August 2012. The IEC was also present at the joint inspection on 31 August 2012.

September 2012

Joint site inspections were conducted by representatives of the Contractor, the SOR and the ET on 7, 14, 21 and 28 September 2012. The IEC was also present at the joint inspection on 14 September 2012.

October 2012

Joint site inspections were conducted by representatives of the Contractor, the SOR and the ET on 5, 12, 18 and 26 October 2012. The IEC was also present at the joint inspection on 26 October 2012.

7.2 LANDSCAPE AND VISUAL MONITORING

Three landscape and visual monitoring site inspections were conducted during the reporting period. Follow-up actions were recommended to the Contractor and the status of the follow-up actions was reviewed during the subsequent weekly site inspections. It was confirmed that most of the necessary landscape and visual mitigation measures as summarised in *Annex I* were implemented by the Contractor.

In accordance with the EM&A Manual, monthly landscape and visual monitoring is required to ensure that the design, implementation and maintenance of landscape and visual mitigation measures recommended in the EIA Report were fully achieved. The monitoring has commenced since November 2010 and was conducted during weekly site inspections. The monitoring procedures and criteria as described in the EM&A Manual were adopted.

August 2012

Site monitoring was conducted on 31 August 2012. Review on the landscape and visual mitigation measures was performed by RLA.

September 2012

Site monitoring was conducted on 14 September 2012. Review on the landscape and visual mitigation measures was performed by RLA.

October 2012

Site monitoring was conducted on 26 October 2012. Review on the landscape and visual mitigation measures was performed by RLA.

Key landscape and visual mitigation measures implemented in the reporting period included:

- Maintenance of a temporary tree nursery;
- Controlling dust generation and erosion of exposed soil;
- Maintaining existing the tree inventory; and
- Re-use existing top soil for new planting areas.

7.3

EFFECTIVENESS OF MITIGATION MEASURES AND MONITORING

The mitigation measures recommended in the EIA report and required by the EP are considered effective in minimizing environmental impacts.

The EM&A for the Project was conducted as scheduled during the reporting period. No non-compliance events were observed during site inspections and no exceedance was recorded during this reporting period. The EM&A programme is considered effective.

8 **ENVIRONMENTAL NON-CONFORMANCE**

8.1.1 ***Summary of Monitoring Exceedance***

No exceedance of the Action and Limit Levels of 1-hr and 24-hr TSP was recorded during this quarter.

8.1.2 ***Summary of Environmental Non-Compliance***

No non-compliance event was recorded during the reporting period.

8.1.3 ***Summary of Environmental Complaint***

No complaint was received during the reporting period. The cumulative summons/prosecution log is shown in *Annex K*.

8.1.4 ***Summary of Environmental Summons and Successful Prosecution***

No summons was received during the reporting period. The cumulative summons/prosecution log is shown in *Annex K*.

9.1 AIR QUALITY

Since the EIA has included only a qualitative assessment of dust impact during the construction phase, the comparison was made between the monitoring results from the start of the Project and the Hong Kong Air Quality Objectives (HKAQO) (Table 9.1).

Table 9.1 Comparison of the HKAQO and Air Quality Monitoring Results

Month	Monitoring Stations	Corresponding ASR in EIA	HKAQO, μgm^{-3}	Measured 24-hour TSP Monitoring Results, μgm^{-3} (a) (b)	
			24 hour (a)	Average	24 hour
August 2012	AM1	A1	260	73	53 - 100
	AM2	A7	260	80	51 - 102
September 2012	AM1	A1	260	73	53 - 100
	AM2	A7	260	79	51 - 102
October 2012	AM1	A1	260	73	53 - 100
	AM2	A7	260	79	51 - 102

Notes:

(a) Only 24-hour TSP monitoring results were compared as there is no 1 hour TSP criterion in HKAQO.

(b) The average and range of data were calculated for the period of monitoring between the commencement of the construction works and the listed reporting month.

The monitoring results show that the average and range of the 24-hour TSP levels recorded since the commencement of the construction works have been well below the 24-hour TSP criterion in the HKAQO. Recommended mitigation measures in Section 3.7.1.1 of EIA have been implemented throughout the construction period and were considered effective.

9.2 WASTE MANAGEMENT

The estimated amount of waste generated in this Project and the cumulative quantities of waste generated up to this reporting period are presented in Table 9.2. The amount of inert C&D material sent to public fills is higher than the estimated amount in EIA. With reference to the C&D Material Assessment (Contractor's General Submission (CSF) No.: DC200803/CSF/SAF/060026/A), the difference in quantity is mainly due to the differences in excavation depth and excavation methods in the Contract Works and that assumed in the Reference Design. Recommended mitigation measures in Sections 7.5.1.1 to 7.5.1.9 of the EIA will continue to be implemented during the construction stage.

Table 9.2 *Quantity of Actual Amount of C&D Materials, General Wastes and Chemical Wastes Generated and EIA Estimation*

Type of Material	Estimated Amount of Public Fill and Construction Waste in EIA (inert & non-inert)	Estimated Amount of Public Fill and Construction Waste in C&D Material Assessment (CSF No.: DC200803/CSF/SAF/06 0026/A) ^(c)	Accumulated Actual Amount of Public Fill and Construction Waste Recorded ^(a) ^(b) ^(d) (inert & non-inert)
Amount of C&D Materials Arising	61,489 m ³	77,600 m ³	115,305.0 m ³
Amount of C&D Materials Reused on other sites	-	-	3,163.9 m ³
Amount of C&D Materials Reused on site	14,926 m ³	18,000 m ³	22,385.6 m ³
Amount of C&D Materials Sent to Public Fills	46,563m ³	59,600 m ³	89,755.6 m ³
General Refuse	Small	-	917.5 tonnes
Chemical Waste	Small	-	810.0 L

Notes:

- (a) The actual amount of C&D Materials was recorded since the commencement of the construction works.
- (b) The density of soil and rock (bulked) is 1.8 tonnes/m³.
- (c) The estimated amount of C&D material generated from the Contract Works was revised in the C&D Material Assessment and submitted to the SO on 9 September 2010 (CSF No.: DC200803/CSF/SAF/060026/A) due to the new plant & facility layout.

9.3

CONCLUSION OF REVIEW

The EIA predictions and monitoring results since the commencement of construction works have been reviewed. The EIA had concluded that the Project would not cause adverse impacts to the environment, and the monitoring results have also indicated the same so far. Mitigation measures recommended in the EP, EIA and EM&A Manual are being implemented by the Contractor as far as practicable and were considered effective. The recommended mitigation measures will continue to be implemented throughout the construction phase of the Project.

The effectiveness of the monitoring programme has been proven therefore change to the programme is not considered to be necessary.

This EM&A Report presents the EM&A works undertaken during the reporting period from 1 August 2012 to 31 October 2012 in accordance with the EM&A Manual and requirements of EP (EP-321/2008).

No exceedance of the Action and Limit Levels of 24-hour TSP and 1-hour TSP was recorded at the monitoring stations during the reporting period.

Monthly landscape and visual monitoring was conducted in this quarterly period. Most of the necessary landscape and visual mitigation measures recommended in the EIA Report were implemented by the Contractor. Follow-up actions would be implemented by the Contractor to improve protection measures on the retained or to-be transplanted trees.

No non-compliance was recorded during the reporting period.

No complaint, summons or prosecution was received during the reporting period.

The monitoring programme was considered effective in reflecting the environmental conditions at the designated representative sensitive receivers. The monitoring results also indicate that the Project has not caused adverse impacts on the environment with implementation of appropriate mitigation measures. Change to the monitoring programme is not considered to be necessary. The ET will keep track of the EM&A programme to ensure compliance of environmental requirements and the proper implementation of all the necessary mitigation measures in the coming periods.

Annex A

Location of Project

PROPOSED FACILITIES AND BUILDINGS

SECTION 1 INLET PUMPING STATION AND PRELIMINARY TREATMENT WORKS

- ① INLET CHAMBER
- ② COARSE SCREENS AND INLET PUMPING STATION
- ③ FINE SCREEN CHANNELS
- ④ GRIT CHAMBERS
- ⑤ INLET FLOWMETER CHAMBER
- ⑥ PTW MCC ROOM

- ⑦ BLOWER ROOM
- ⑧ SCREENING SKIP HOUSE
- ⑨ ODOR DUCT SUPPORTING BRIDGE
- ⑩ SEPTIC WASTE RECEPTION STATION
- ⑪ WEIGHBRIDGE
- ⑫ ELECTRICAL BUILDING 1

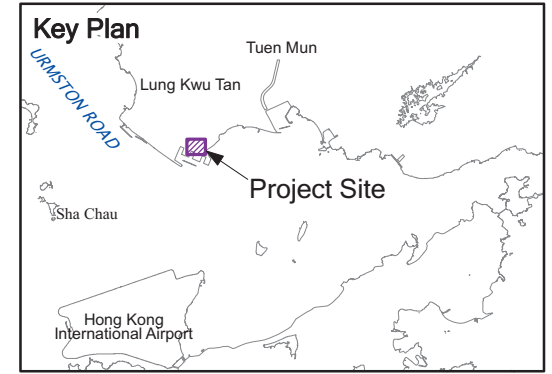
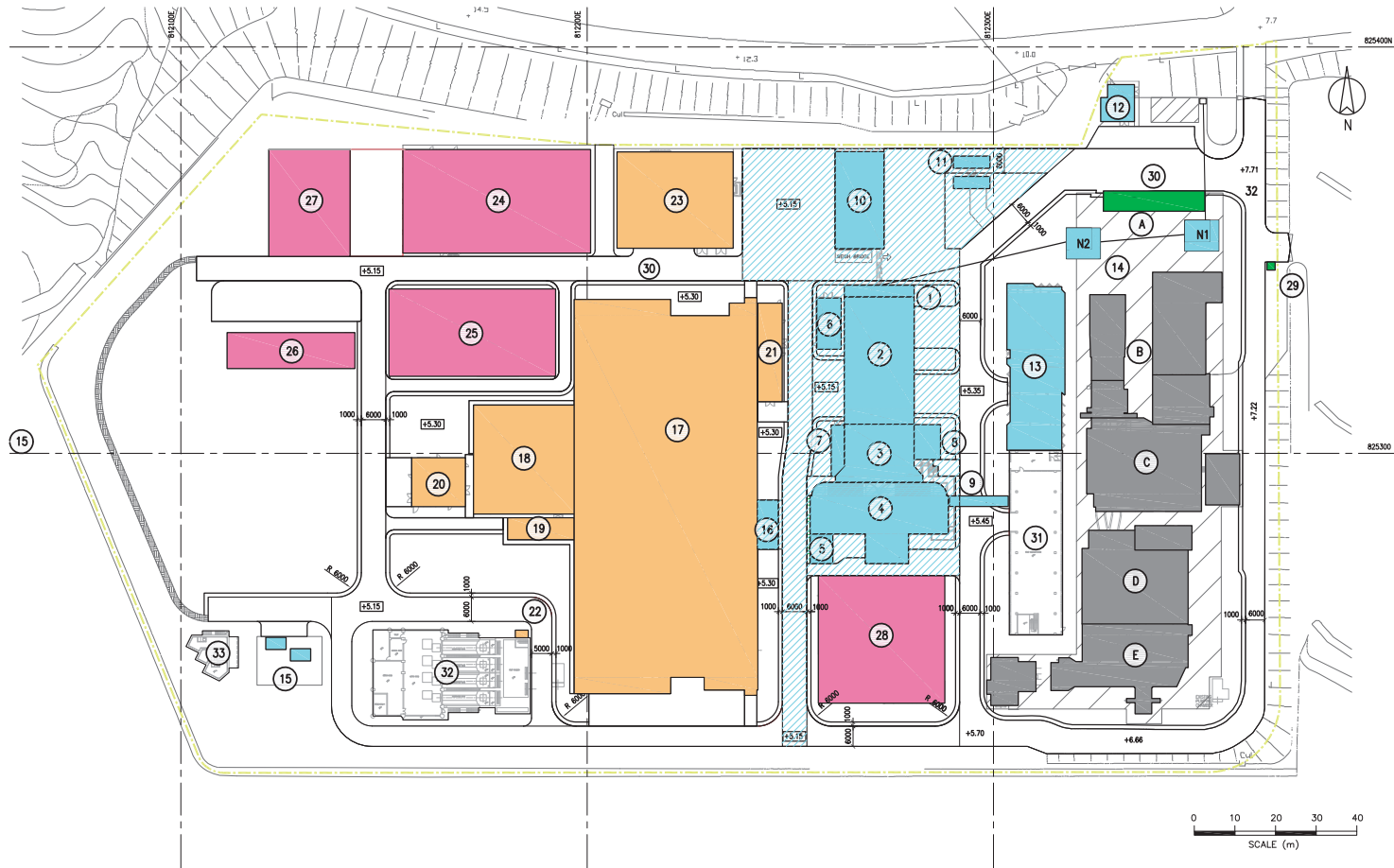
- ⑬ ADMINISTRATION BUILDING
- ⑭ INLET CHAMBERS
- ⑮ PAYMENT FLOWMETER CHAMBER
- ⑯ CEPT INLET CHAMBER

SECTION 2 CEPT TANKS UV DISINFECTION

- ⑰ CEPT TANKS
- ⑱ UV DISINFECTION CHANNELS
- ⑲ REUSE WATER PUMP ROOM
- ⑳ ELECTRICAL BUILDING 3
- ㉑ ELECTRICAL BUILDING 2
- ㉒ OUTFALL PUMPING STATION CONNECTION CHAMBER
- ㉓ CHEMICAL BUILDING

SECTION 3 SLUDGE TREATMENT & HANDLING AND ODOUR CONTROL

- ㉔ SLUDGE DEMATERING BUILDING
- ㉕ DEODORISATION UNITS (B)
- ㉖ SLUDGE SKIP STORAGE BUILDING
- ㉗ SLUDGE SKIP LOADING AREA
- ㉘ DEODORISATION UNITS (A)



SECTION 4 EXISTING BUILDINGS TO BE DEMOLISHED

- Ⓐ ADMINISTRATION BUILDING
- Ⓑ INLET SCREW PUMPING STATION AND MOTOR HOUSE
- Ⓒ COARSE SCREENS
- Ⓓ BLOWER HOUSE AND GRIT CHANNELS
- Ⓔ FINE SCREEN CHANNELS AND FLOWMETER CHAMBER

SECTION 5 EXTERNAL WORKS

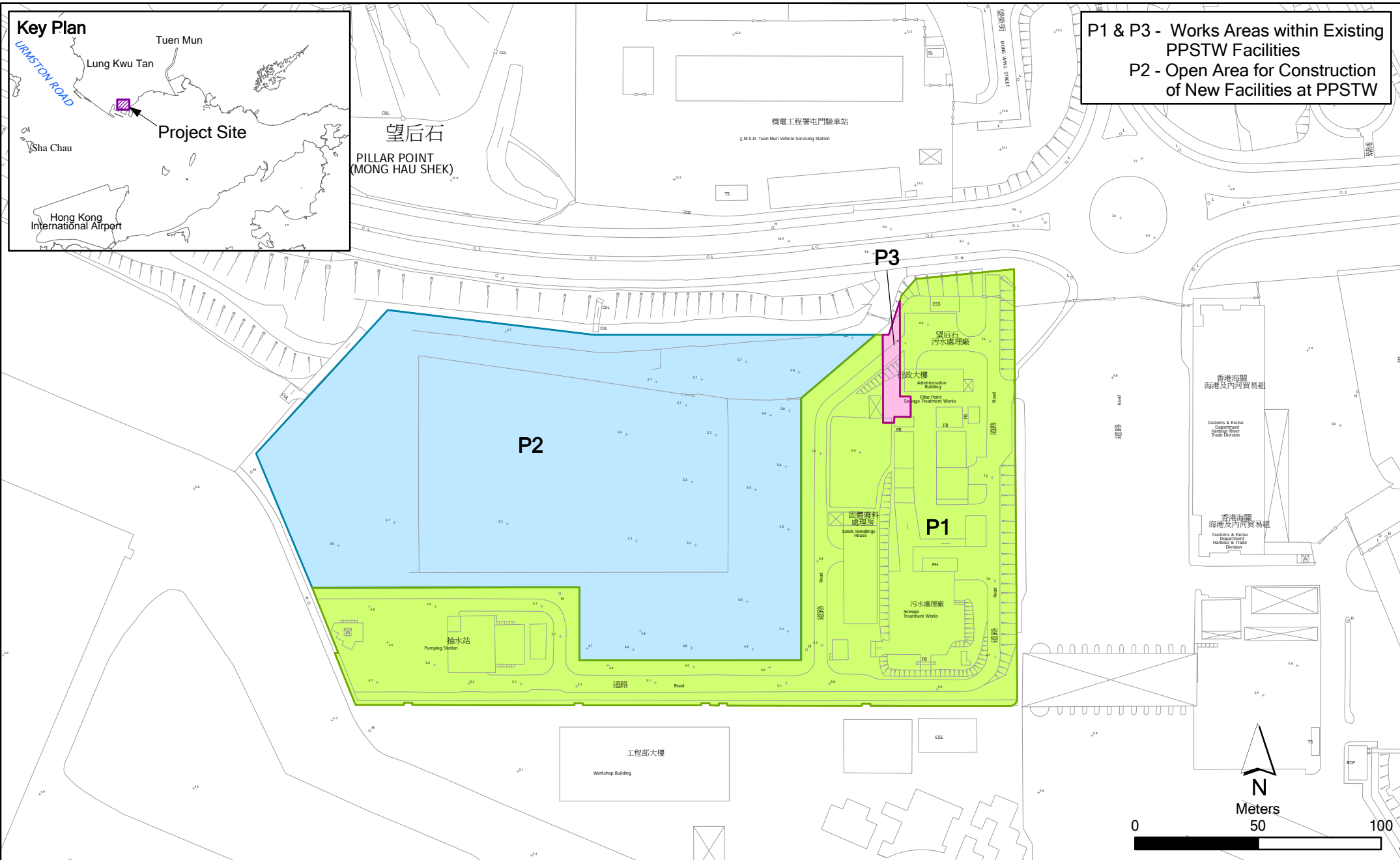
- ⑳ GATE HOUSE
- ㉑ CAR PARK

EXISTING BUILDING TO BE RETAINED

- ㉒ EXISTING SOLID HANDLING BUILDING
- ㉓ EXISTING OUTFALL PUMPING STATION
- ㉔ EXISTING TERMINAL MANHOLE

Annex B

Works Location



P1 & P3 - Works Areas within Existing PPSTW Facilities
P2 - Open Area for Construction of New Facilities at PPSTW

Annex B

Location of Works Areas

File: 0119806_location of works.mxd
Date: 15/12/2010

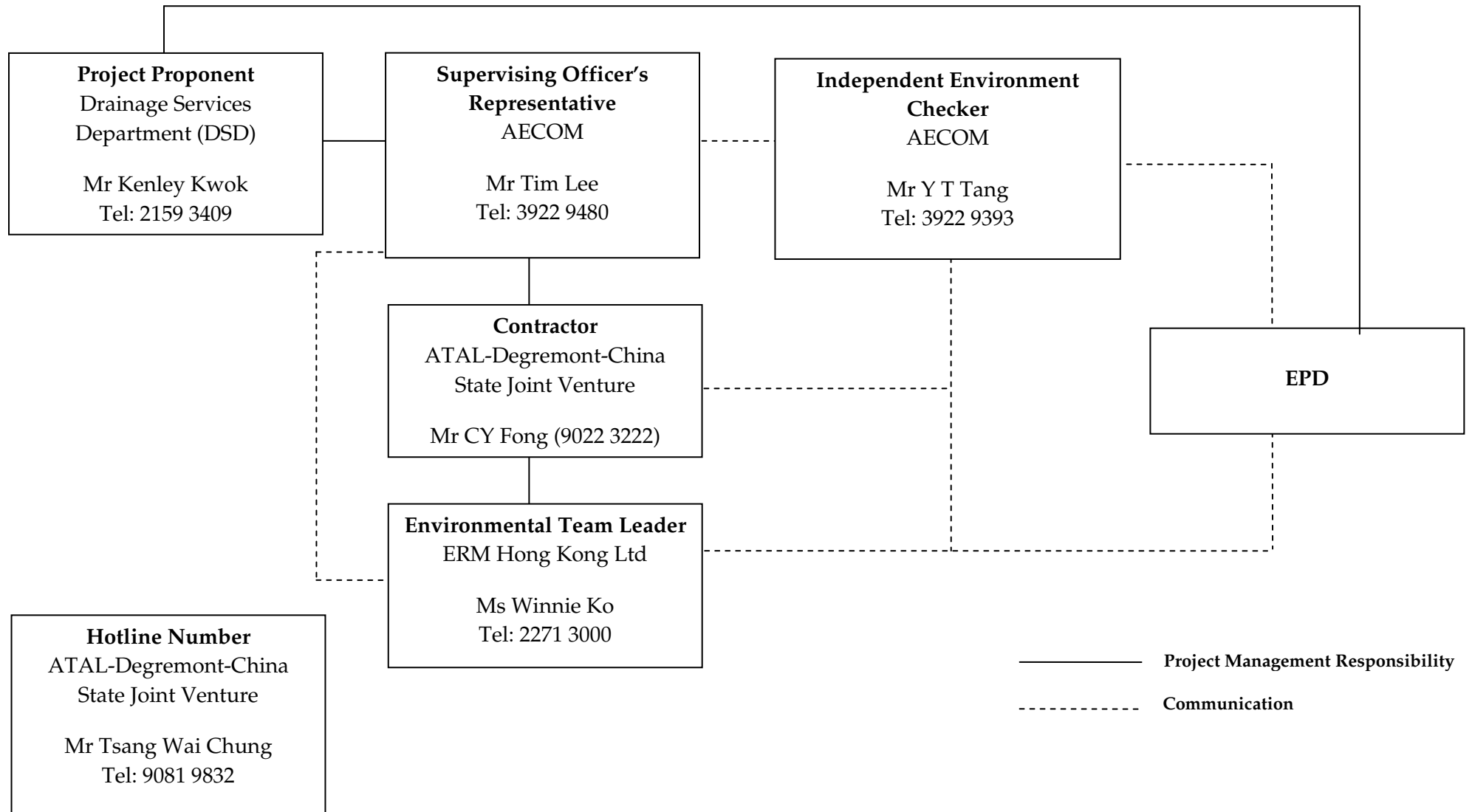
Environmental
Resources
Management



Annex C

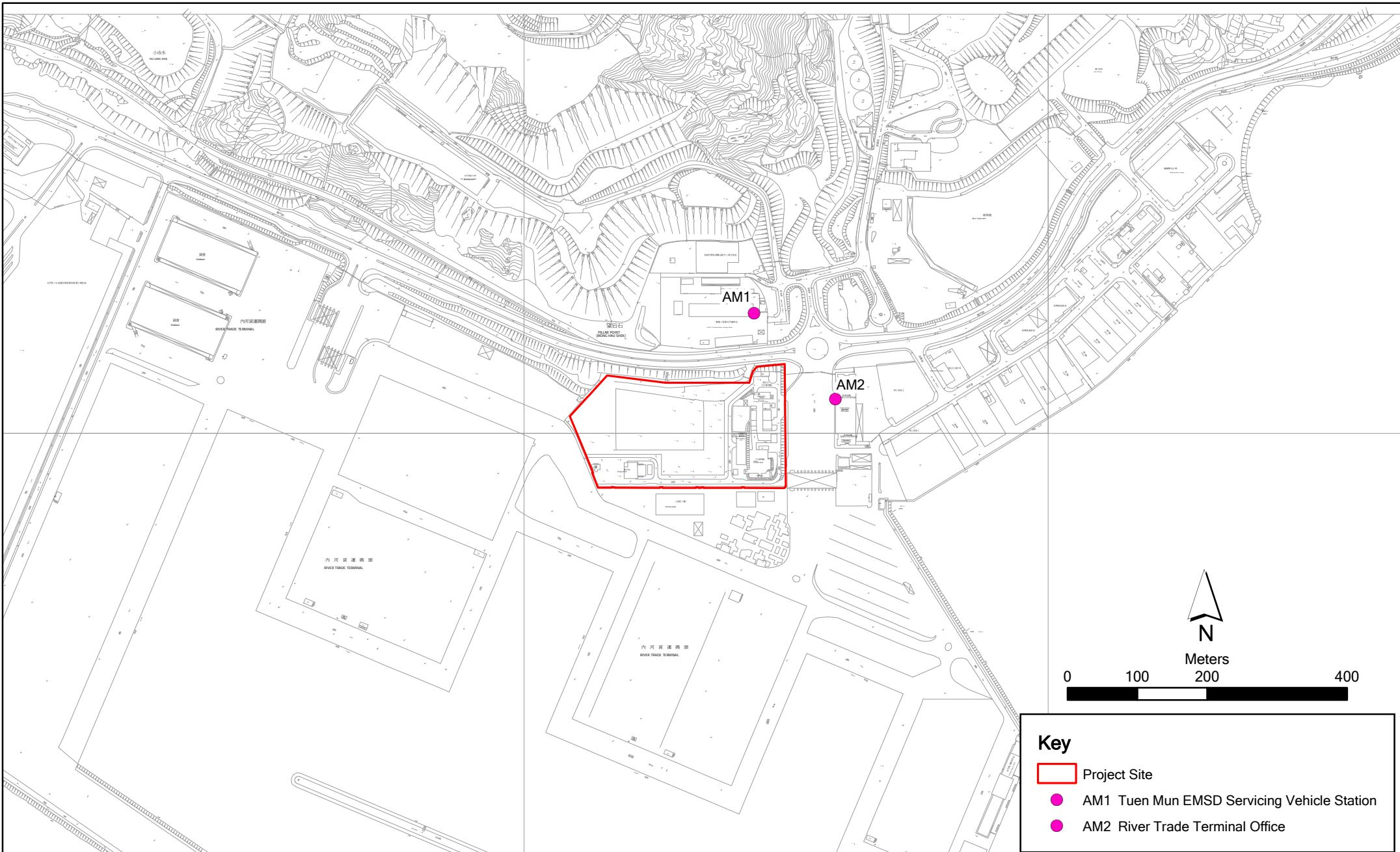
Project Organization Chart with Contact Details

Project Organization During Construction Phase (with contact details)



Annex D

Locations of Air Quality Monitoring Stations



Key

- Project Site
- AM1 Tuen Mun EMSD Servicing Vehicle Station
- AM2 River Trade Terminal Office

Annex D

Contract No. DC/2008/03 Design, Build and Operate of Pillar Point Sewage Treatment Works

File: 0119806_Site Boundary.mxd
Date: 15/12/2010

**Environmental
Resources
Management**





AM1 – Tuen Mun EMSD Servicing Vehicle Station



AM2 - River Trade Terminal Office

Annex E

Monitoring Schedule

**Contract No. DC/2008/03 - Design, Build and Operate Pillar Point Sewage Treatment Works
(Tuen Mun EMSD Servicing Vehicle Station - AM1 & River Trade Terminal Office - AM2)
August 2012**

Sunday	Monday	Tuesday	Wednesday	Thursday	Friday	Saturday
			1-Aug	2-Aug	3-Aug	4-Aug
						3X1-hr & 1X 24-hr TSP
5-Aug	6-Aug	7-Aug	8-Aug	9-Aug	10-Aug	11-Aug
					3X1-hr & 1X 24-hr TSP	
12-Aug	13-Aug	14-Aug	15-Aug	16-Aug	17-Aug	18-Aug
				3X1-hr & 1X 24-hr TSP		
19-Aug	20-Aug	21-Aug	22-Aug	23-Aug	24-Aug	25-Aug
			3X1-hr & 1X 24-hr TSP			
26-Aug	27-Aug	28-Aug	29-Aug	30-Aug	31-Aug	
		3X1-hr & 1X 24-hr TSP				

**Contract No. DC/2008/03 - Design, Build and Operate Pillar Point Sewage Treatment Works
(Tuen Mun EMSD Servicing Vehicle Station - AM1 & River Trade Terminal Office - AM2)
September 2012**

Sunday	Monday	Tuesday	Wednesday	Thursday	Friday	Saturday
						1-Sep
2-Sep	3-Sep	4-Sep	5-Sep	6-Sep	7-Sep	8-Sep
	3X1-hr & 1X 24-hr TSP					3X1-hr & 1X 24-hr TSP
9-Sep	10-Sep	11-Sep	12-Sep	13-Sep	14-Sep	15-Sep
					3X1-hr & 1X 24-hr TSP	
16-Sep	17-Sep	18-Sep	19-Sep	20-Sep	21-Sep	22-Sep
				3X1-hr & 1X 24-hr TSP		
23-Sep	24-Sep	25-Sep	26-Sep	27-Sep	28-Sep	29-Sep
			3X1-hr & 1X 24-hr TSP			
30-Sep						

**Contract No. DC/2008/03 - Design, Build and Operate Pillar Point Sewage Treatment Works
(Tuen Mun EMSD Servicing Vehicle Station - AM1 & River Trade Terminal Office - AM2)
October 2012**

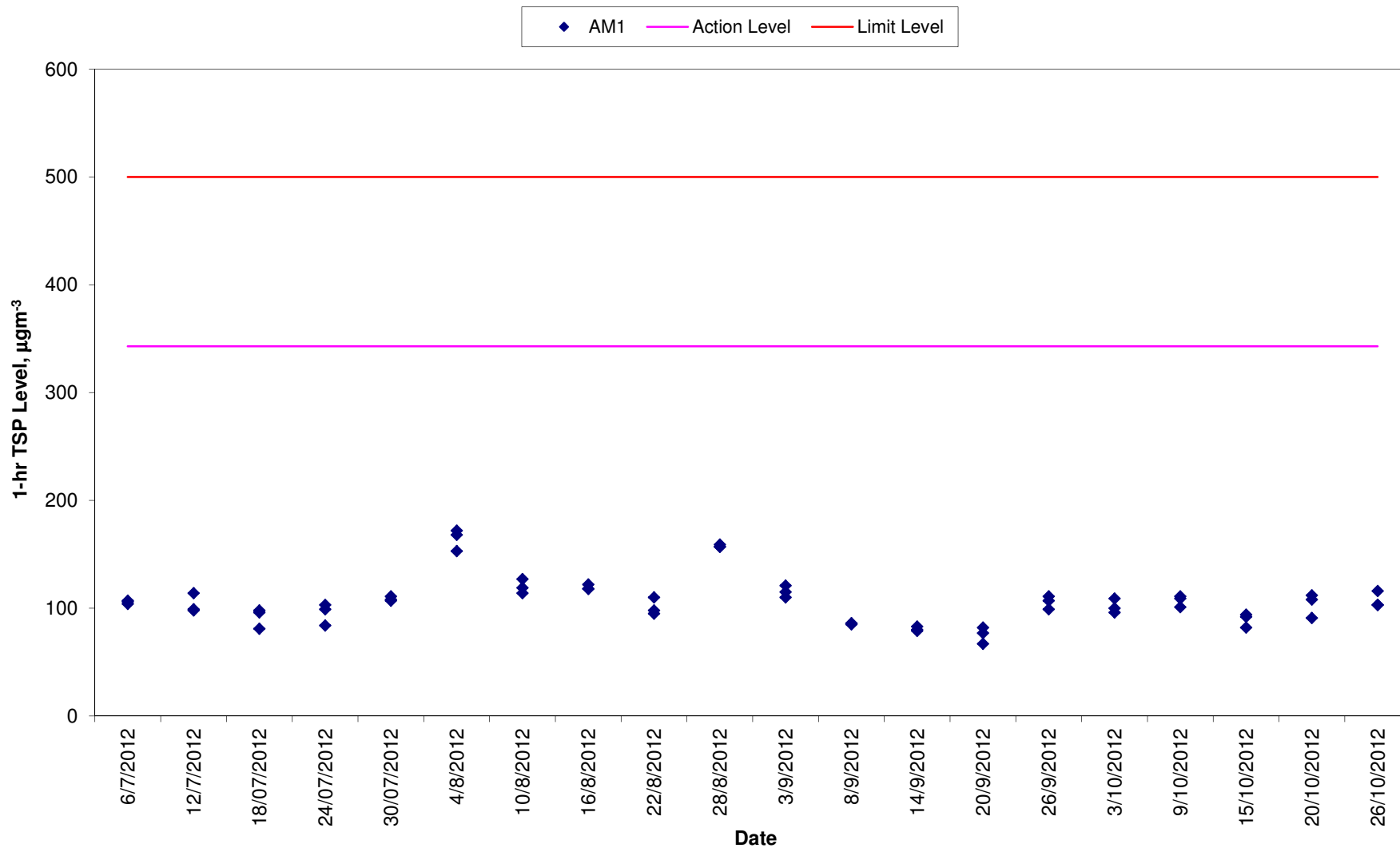
Sunday	Monday	Tuesday	Wednesday	Thursday	Friday	Saturday
	1-Oct	2-Oct	3-Oct	4-Oct	5-Oct	6-Oct
			3X1-hr & 1X 24-hr TSP			
7-Oct	8-Oct	9-Oct	10-Oct	11-Oct	12-Oct	13-Oct
		3X1-hr & 1X 24-hr TSP				
14-Oct	15-Oct	16-Oct	17-Oct	18-Oct	19-Oct	20-Oct
	3X1-hr & 1X 24-hr TSP					3X1-hr & 1X 24-hr TSP
21-Oct	22-Oct	23-Oct	24-Oct	25-Oct	26-Oct	27-Oct
				3X1-hr & 1X 24-hr TSP		
28-Oct	29-Oct	30-Oct	31-Oct			

Annex F

24-hour and 1-hour TSP Monitoring Results

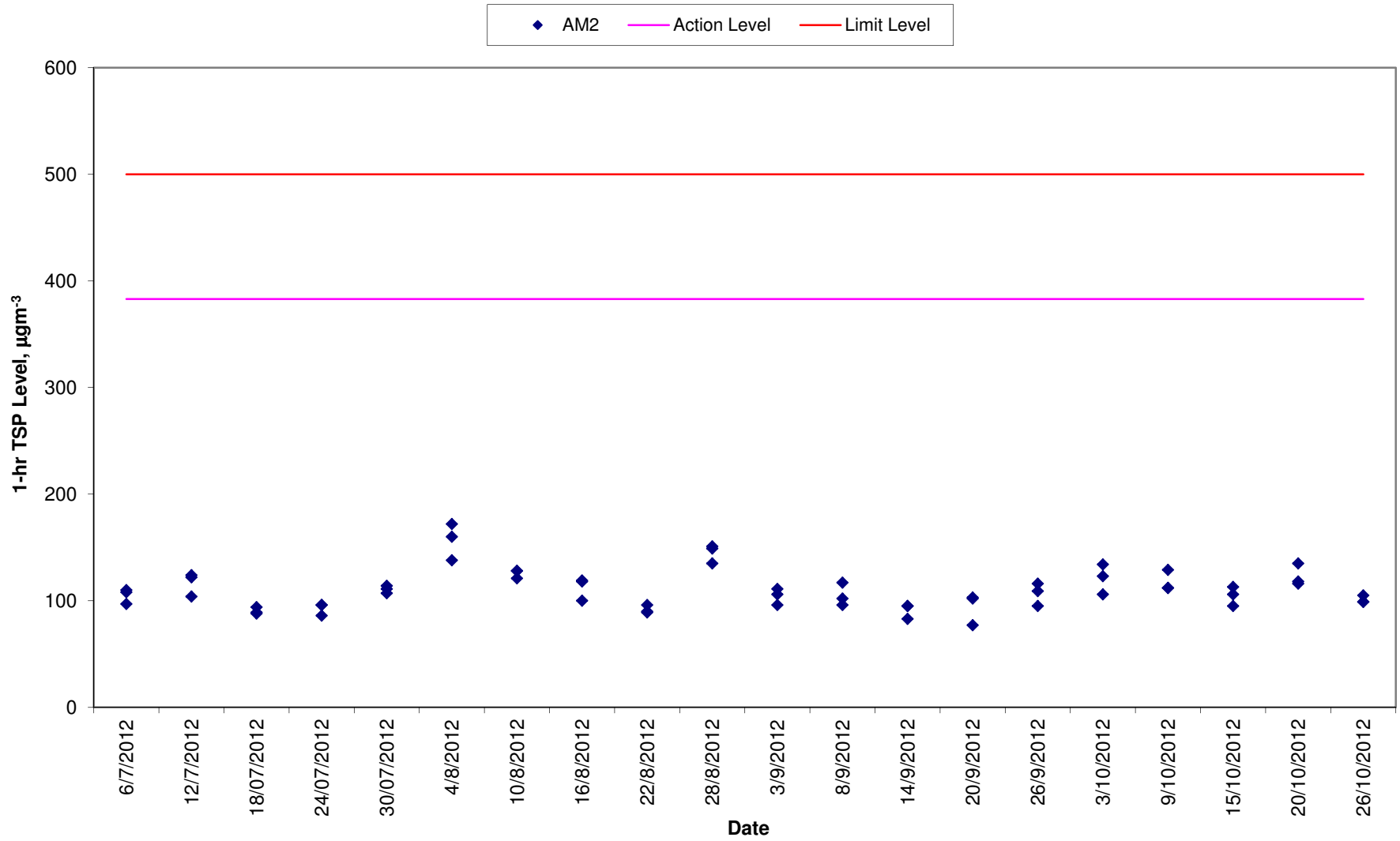
Annex F TSP Monitoring Results

1-hr TSP Levels for the Past 4 Months AM1 (Tuen Mun EMSD Vehicle Servicing Station)



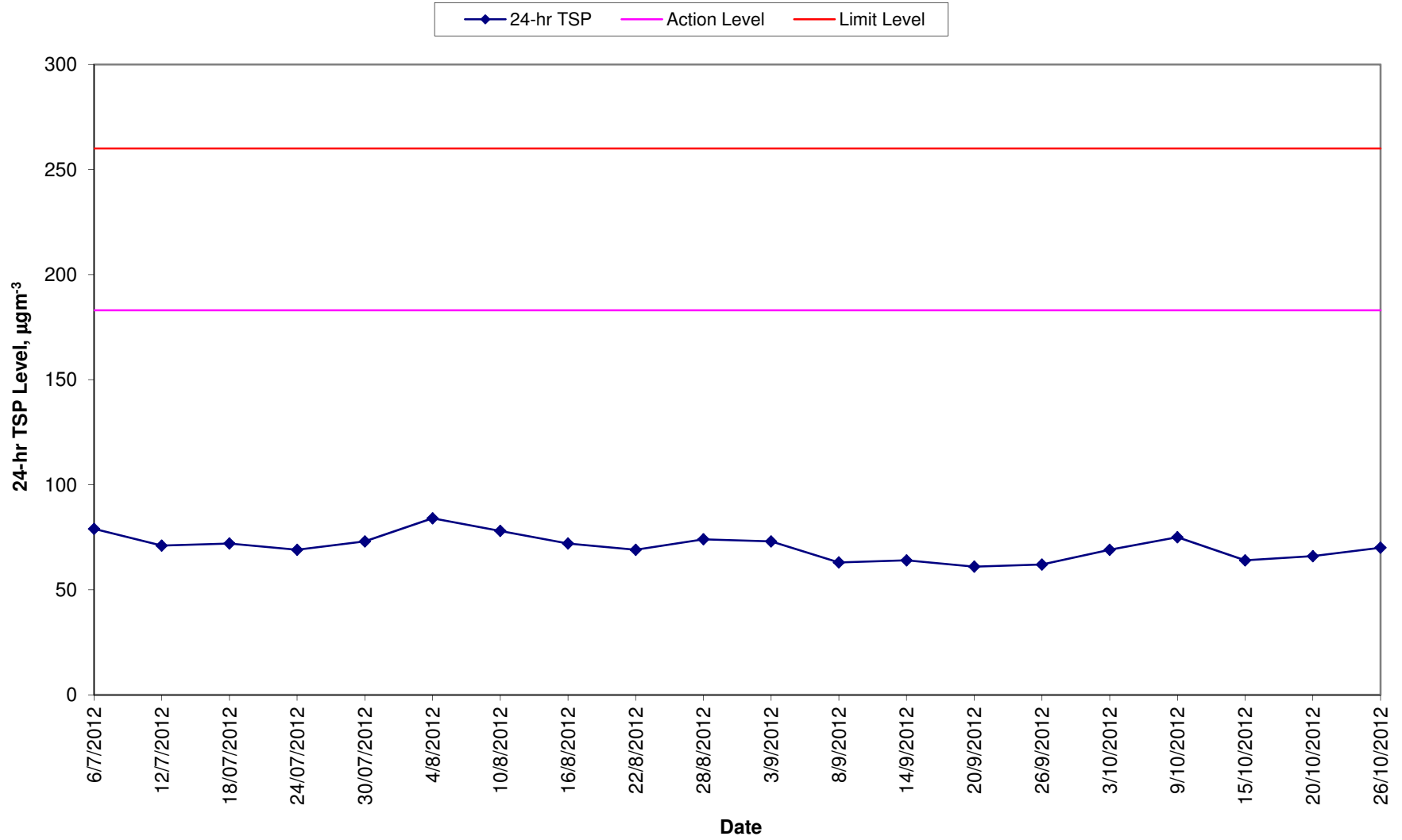
Annex F TSP Monitoring Results

1-hr TSP Levels for the Past 4 Months AM2 (River Trade Terminal Office)



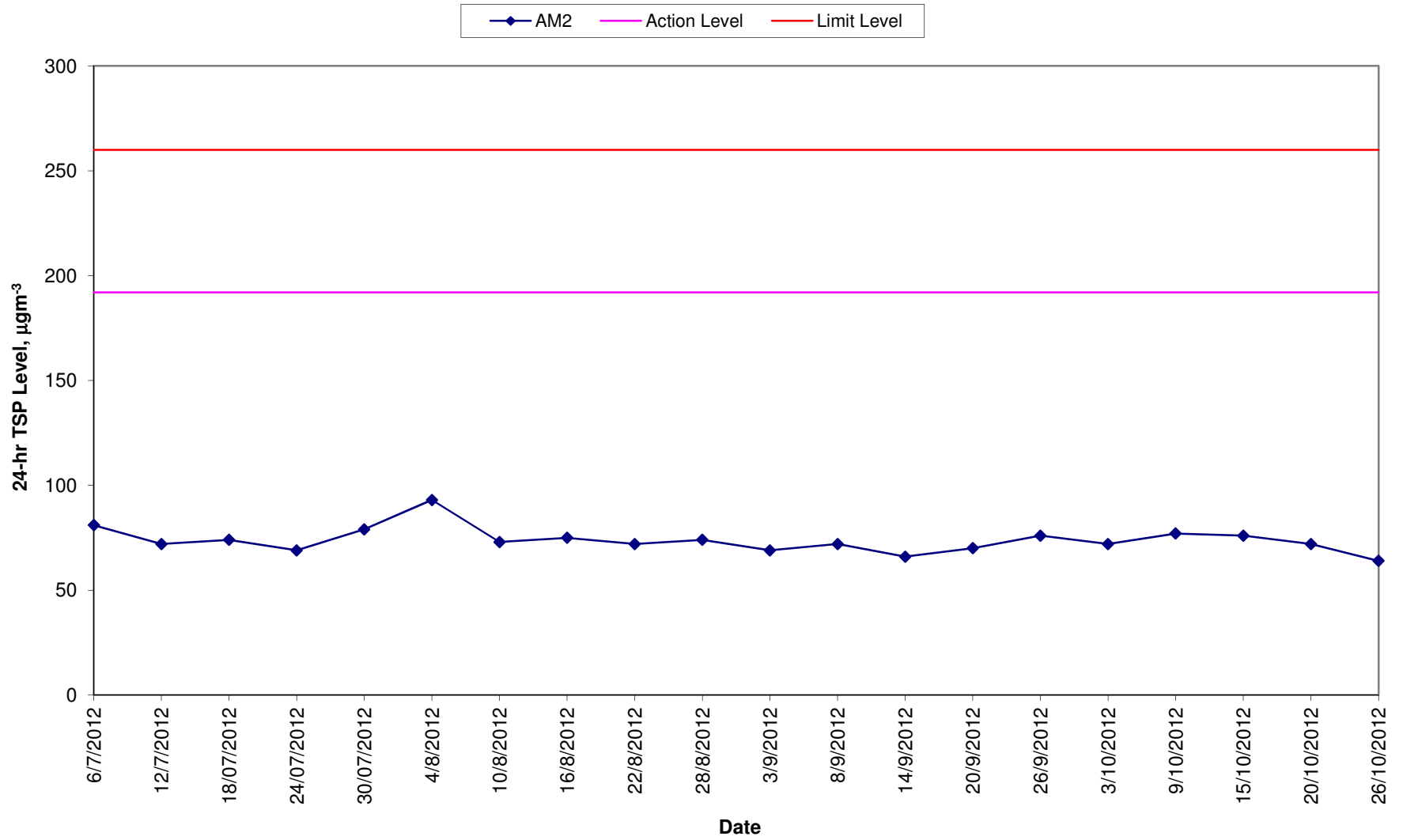
Annex F TSP Monitoring Results

24-hr TSP Levels for the Past 4 Months AM1 (Tuen Mun EMSD Vehicle Servicing Station)



Annex F TSP Monitoring Results

24-hr TSP Levels for the Past 4 Months AM2 (River Trade Terminal Office)



Annex G

(Not Used)

Annex H

Event/Action Plan for Air Quality Monitoring

Table H1 *Event Action Plan for Air Quality Monitoring*

Action Level/Limit Level	Environmental Team Leader (ETL)	Independent Environmental Checker (IEC)	Supervising Officer Representative (SOR)	Contractor
<i>Action Level</i>				
Exceedance for one sample	<ul style="list-style-type: none"> Identify source, investigate the causes of complaint and propose remedial measures; Inform IEC and SOR; Repeat measurement to confirm findings; Increase monitoring frequency to daily. 	<ul style="list-style-type: none"> Check monitoring data submitted by ET; Check Contractor’s working method. 	<ul style="list-style-type: none"> Notify Contractor and DSD. 	<ul style="list-style-type: none"> Rectify any unacceptable practice; Amend working methods if appropriate.
Exceedance for two or more consecutive samples	<ul style="list-style-type: none"> Identify source; Inform IEC and SOR; Advise the SOR on the effectiveness of the proposed remedial measures; Repeat measurements to confirm findings; Increase monitoring frequency to daily; Discuss with IEC and Contractor on remedial actions required; If exceedance continues, arrange meeting with IEC and SOR; If exceedance stops, cease additional monitoring. 	<ul style="list-style-type: none"> Check monitoring data submitted by ET; Check Contractor’s working method; Discuss with ET and Contractor on possible remedial measures; Advise the ET on the effectiveness of the proposed remedial measures; Supervise Implementation of remedial measures. 	<ul style="list-style-type: none"> Confirm receipt of notification of exceedance in writing; Notify Contractor and DSD; Ensure remedial measures properly implemented. 	<ul style="list-style-type: none"> Submit proposals for remedial actions to IEC within three working days of notification; Implement the agreed proposals; Amend proposal if appropriate.

Action Level/Limit Level	Environmental Team Leader (ETL)	Independent Environmental Checker (IEC)	Supervising Officer Representative (SOR)	Contractor
<i>Limit Level</i>				
Exceedance for one sample	<ul style="list-style-type: none"> Identify source, investigate the causes of exceedance and propose remedial measures; Inform IEC, SOR, DSD and EPD; Repeat measurement to confirm finding; Increase monitoring frequency to daily; Assess effectiveness of Contractor's remedial actions and keep IEC, EPD, DSD and SOR informed of the results. 	<ul style="list-style-type: none"> Check monitoring data submitted by ET; Check Contractor's working method; Discuss with ET and Contractor on possible remedial measures; Advise the SOR on the effectiveness of the proposed remedial measures; Supervise implementation of remedial measures. 	<ul style="list-style-type: none"> Confirm receipt of notification of exceedance in writing; Notify Contractor; Ensure remedial measures properly implemented. 	<ul style="list-style-type: none"> Take immediate action to avoid further exceedance; Submit proposals for remedial actions to IEC within three working days of notification; Implement the agreed proposals; Amend proposal if appropriate.
Exceedance for two or more consecutive samples	<ul style="list-style-type: none"> Notify IEC, SOR, DSD and EPD; Identify source; Repeat measurement to confirm findings; Increase monitoring frequency to daily; Carry out analysis of Contractor's working procedures to determine possible mitigation to be implemented; Arrange meeting with IEC and SOR to discuss the remedial actions to be taken; Assess effectiveness of Contractor's remedial actions and keep IEC, EPD, DSD and SOR informed of the results; If exceedance stops, cease additional monitoring. 	<ul style="list-style-type: none"> Discuss amongst SOR, ET, and Contractor on the potential remedial actions; Review Contractor's remedial actions whenever necessary to assure their effectiveness and advise the SOR accordingly; Supervise the implementation of remedial measures. 	<ul style="list-style-type: none"> Confirm receipt of notification of exceedance in writing; Notify Contractor; In consolidation with the IEC, agree with the Contractor on the remedial measures to be implemented; Ensure remedial measures properly implemented; If exceedance continues, consider what portion of the work is responsible and instruct the Contractor to stop that portion of work until the exceedance is abated. 	<ul style="list-style-type: none"> Take immediate action to avoid further exceedance; Submit proposals for remedial actions to IEC within three working days of notification; Implement the agreed proposals; Resubmit proposals if problem still not under control; Stop the relevant portion of works as determined by the SOR until the exceedance is abated.

Annex I

Implementation Schedule of Mitigation Measures

Annex I Summary of Mitigation Measures Implementation Schedule (August 2012)

Type of Impact	Environmental Protection Measures	Location/ Timing	Status
<i>Summary of Environmental Mitigation Measures in the EIA and EM&A Manual</i>			
<i>Construction Phase</i>			
Air Quality	Dust mitigation measures stipulated in <i>the Air Pollution Control (Construction Dust) Regulation</i> shall be incorporated to control Post emission. Notice shall be given to authority prior to commencing of work.	Work sites / during construction period	<> Notice of works commencement was submitted to EPD on 3 August 2010.
Water Quality	The practices outlined in ProPECC PN 1/94 Construction Site Drainage should be adopted. It is recommended to install perimeter channels in the works areas to intercept runoff as site boundary prior to the commencement of any earthwork. To prevent storm runoff from washing across exposed soil surfaces, intercepting channels should be provided. Drainage channels are also required to convey site runoff to sand/silt traps and oil interceptors. Provision of regular cleaning and maintenance can ensure the normal operation of these facilities throughout the construction period. Any practical options for the diversion and re-alignment of drainage should comply with both engineering and environmental requirements in order to ensure adequate hydraulic capacity of all drains.	Work site/During the construction period	√
Water Quality	There is a need to apply to EPD for a discharge license under the WPCO for discharging effluent from the construction site. The discharge quality is required to meet the requirements specified in the discharge license. All the runoff and wastewater generated from the works areas should be treated so that it satisfies all the standards listed in the TM-DSS. Reuse and recycling of the treated effluent can minimize water consumption and reduce the effluent discharge volume. The beneficial uses of the treated effluent may include dust suppression, wheel washing and general cleaning. If monitoring of the treated effluent quality from the works areas is required during the construction phase of the Project, the monitoring should be carried out in accordance with the WPCO license which is under the ambit of regional office (RO) of EPD.	Work site/During the construction period	√ Discharge licence was awarded by EPD on 7 December 2010.
Water Quality	The construction programme should be properly planned to minimize soil excavation, if any, in rainy seasons. This prevents soil erosion from	Work site/During the construction period	√

Type of Impact	Environmental Protection Measures	Location/ Timing	Status
	<p>exposed soil surfaces. Any exposed soil surfaces should also be properly protected to minimize dust emission. In areas where a large amount of exposed soil exists, earth bunds or sand bags should be provided. Exposed stockpiles should be covered with tarpaulin or impervious sheets at all times. The stockpiles of materials should be placed at locations away from any stream course so as to avoid releasing materials into the water bodies. Final surfaces of earthworks should be compacted and protected by permanent work. It is suggested that haul roads should be paved with concrete and the temporary access roads protected using crushed stone or gravel, wherever practicable. Wheel washing facilities should be provided at all site exists to ensure that earth, mud and debris would not be carried out of the works areas by vehicles.</p>		
Water Quality	<p>Good sites practices should be adopted to clean the rubbish and litter on the construction sites so as to prevent the rubbish and litter from spreading from the site area. It is recommended to clean the construction sites on a regular basis.</p>	Work site/ During the construction period	√
Water Quality	<p>The presence of construction workers generates sewage. It is recommended to provide sufficient chemical toilets in the works areas. The toilet facilities should be more than 30m from any watercourse. A licensed water collector should be deployed to clean the chemical toilets on a regular basis. The construction workers can also make use of the existing toilet facilities within the PPSTW as necessary.</p>	Work site/ During the construction period	√
Water Quality	<p>Notices should be posted at conspicuous locations to remind the workers not to discharge any sewage or wastewater into the nearby environment during the construction phase of the project. Regular environmental audit on the construction phase of the project. Regular environmental audit on the construction site can provide an effective control of any malpractices and can achieve continual improvement of environmental performance on site.</p>	Work site/ During the construction period	√
Waste Management	<p>Contractor must register as a chemical waste producer if chemical wastes would be produced from the construction activities. The Waste Disposal Ordinance (Cap 354) and its subsidiary regulations in particular the Waste Disposal (Chemical Waste) (General) Regulation</p>	Work site/ During the construction period	√

Type of Impact	Environmental Protection Measures	Location/ Timing	Status
	should be observed and complied with for control of chemical wastes.		
Waste Management	Any service shop and maintenance facilities should be located on hard standings within a bunded area, and stumps and oil interceptors should be provided. Maintenance of vehicles and equipment involving activities with potential for leakage and spillage should only be undertaken within the areas appropriately equipped to control these discharges.	Work site/ During the construction period	<>
Waste Management	<p>Disposal of chemical wastes should be carried out in compliance with the Waste Disposal Ordinance. The Code of Practice on the Packaging, Labelling and Storage of Chemical Wastes published under the Waste Disposal Ordinance details the requirements to deal with the chemical wastes. General requirements are given as follows:</p> <ul style="list-style-type: none"> • Suitable containers should be used to hold the chemical wastes to avoid leakage or spillage during storage, handling and transport. • Chemical waste containers should be suitably labelled, to notify and warn the personnel who are handling the wastes, to avoid accidents. • Storage area should be selected at a safe location on site and adequate space should be allocated to the storage area. 	Work site/ During the construction period	√
Waste Management	<p><i>Good Site Practices</i> Recommendations for good site practices during the construction activities include:</p> <ul style="list-style-type: none"> • Nomination of an approved person, such as a site manager, to be responsible for good site practices, arrangements for collection and effective disposal to an appropriate facility, of all wastes generated at the site • Training of site personnel in proper waste management and chemical handling procedures • Provision of sufficient waste disposal points and regular collection of waste • Appropriate measures to minimise windblown litter and dust during transportation of waste by either covering trucks or by transporting wastes in enclosed containers 	Work site/ During the construction period	√

Type of Impact	Environmental Protection Measures	Location/ Timing	Status
	<ul style="list-style-type: none"> • Regular cleaning and maintenance programme for drainage systems, sumps and oil interceptors. • Separation of chemical wastes for special handling and appropriate treatment at the Chemical Waste Treatment Facility. 		
Waste Management	<p><i>Waste Reduction Measures</i></p> <p>Waste reduction is best achieved at the planning and design stage, as well as by ensuring the implementation of good site practices. Recommendations to achieve waste reduction include:</p> <ul style="list-style-type: none"> • Segregation and storage of different types of waste in different containers, skips or stockpiles to enhance reuse or recycling of materials and their proper disposal. • Encourage collection of aluminium cans by providing separate labelled bins to enable this waste to be segregated from other general refuse generated by the work force • Proper storage and site practices to minimise the potential for damage or contamination of construction materials. • Plan and stock construction materials carefully to minimise amount of waste generated and avoid unnecessary generation of waste. 	Work site/ During planning & design stage, and construction stage	√
Waste Management	<p><i>General Refuse</i></p> <p>General refuse should be stored in enclosed bins or compaction units separate from C&D material. A reputable waste collector should be employed by the contractor to remove general refuse from the site, separately from C&D material. Preferably an enclosed and covered area should be provided to reduce the occurrence of 'wind blown' light material.</p>	Work site / During the construction period	√
Waste Management	<p><i>Construction and Demolition Material</i></p> <p>In order to minimise the impact resulting from collection and transportation of C&D material for off-site disposal, the excavated</p>	Work site / During design stage & construction period	√

Type of Impact	Environmental Protection Measures	Location/ Timing	Status
	<p>material generated from site formation works for the proposed new facilities and units at the STW should be reused on-site as far as practicable. The surplus excavated material should be disposed of at the designated public fill reception facility, as agreed with the Secretary of the Public Fill Committee, for other beneficial uses.</p>		
Waste Management	<p>Mitigation measures and good site practices should be followed to control potential environmental impact from handling and transportation of C&D material. The mitigation measures include:</p> <ul style="list-style-type: none"> • Where it is unavoidable to have transient stockpiles of C&D material pending collection for disposal, the transient stockpiles shall be located away from waterfront or storm drains as far as possible. • Open stockpiles of construction materials or construction wastes on-site should be covered with tarpaulin or similar fabric. • Skip hoist for material transport should be totally enclosed by impervious sheeting. • Every vehicle should be washed to remove any dusty materials from its body and wheels before leaving a construction site • The area where vehicle washing takes place and the section of the road between the washing facilities and the exit point should be paved with concrete, bituminous materials or hardcores. • The load of dusty materials carried by vehicle leaving a construction site should be covered entirely by clean impervious sheeting to ensure dust materials do not leak from the vehicle. • All dusty materials should be sprayed with water prior to any loading, unloading or transfer operation so as to maintain the dusty materials wet. • The height from which excavated materials are dropped should be controlled to a minimum practical height to limit fugitive dust generation from unloading. 	Work site / During design stage & construction period	√
Waste Management	<p>When disposing C&D material at a public filling facility, it shall be noted that the material shall only consist of earth, building debris and broken rock and concrete. The material shall be free from marine mud, household refuse, plastic, metals, industrial and chemical waste, animal</p>	Work site/During design stage & construction period	√

Type of Impact	Environmental Protection Measures	Location/ Timing	Status
	<p>and vegetable matter, and other material considered to be unsuitable by the Filling Supervisor. In order to monitor the disposal of the surplus C&D material at the designed public fill reception facility and to control fly tipping, a trip-ticket system should be included as one of the contractual requirements and implemented by an Environmental Team undertaking the Environmental Monitoring and Audit work with reference to the ETWB TCW No. 31/2004 "Trip Ticket System for Disposal of Construction and Demolition Materials" as attached in Appendix 7-1. An Independent Environmental Checker should be responsible for auditing the results of the system.</p>		
Waste Management	<p><i>Chemical Waste</i></p> <p>If chemical wastes are produced at the construction site, the Contractor would be required to register with the EPD as a Chemical Waste Producer and to follow the guidelines stated in the Code of Practice on the Packaging, Labelling and Storage of Chemical Wastes. Good quality containers compatible with the chemical wastes should be used, and incompatible chemicals should be stored separately. Appropriate labels should be securely attached on each chemical waste container indicating the corresponding chemical characteristics of the chemical waste, such as explosive, flammable, oxidizing, irritant, toxic, harmful, corrosive, etc. The Contractor shall use a licensed collector to transport and dispose of the chemical wastes, to either the Chemical Waste Treatment Centre, or another licensed facility, in accordance with the Waste Disposal (Chemical Waste) (General) Regulation.</p>	Work site / During the construction period	√
Landscape & Visual	<p><u>Temporary Tree Nurseries</u></p> <p>Temporary tree nurseries may be set up for the transplanted tree and proposed trees at an early stage to allow small trees to grow during the construction periods. By the time when planting area becomes available, trees mature and increase in trunk & spread size. They will require minimal pruning and suffer much less damage during transplanting when comparing the travel distance from an on-site nursery to an off-site nursery.</p> <p>Besides, these trees may also be positioned as visual mitigation during</p>	Work site/ During design stage & construction period	√. A tree nursery has been set up off-site near the site office.

Type of Impact	Environmental Protection Measures	Location/ Timing	Status
	the construction period.		
Landscape & Visual	<p><u>No-intrusion Zone</u></p> <p>To maximize protection to existing trees and ground vegetation, construction contracts may designate “No-intrusion Zone” to various areas within the site boundary with rigid and durable fencing for each individual no-intrusion zone. The contractor should close monitor and restrict the site working staff not to enter the “no-intrusion zone”, even for non-direct construction activities and storage of equipment.</p>	Work site/ During design stage & construction period	<>
Landscape & Visual	<p><u>Hoarding</u></p> <p>Hoarding or boundary fencing for construction shall be considered. It should be sensitively designed, subtle, camouflaged and more ‘permeable’ so that they fit into the existing environment when looking from outside.</p>	Work site/ During design stage & construction period	√
Landscape & Visual	<p><u>Dust and Erosion Control for Exposed Soil</u></p> <p>Excavation works and demolition of existing building blocks and which will be highly visible form surrounding areas should be well planned and with precautions to suppress dust. Exposed soil shall be covered or ‘camouflaged’ and watered often. Areas that are expected to be left with bare soil for a long period of time after excavation shall be properly covered with suitable protective fabric. Silt and erosion shall be controlled by ground barriers around the slope cutting area..</p>	Work site/ During design stage & construction period	√
Landscape & Visual	<p><u>Existing Tree Record Inventory</u></p> <p>All retained trees should be record photographically at the commencement of the Contract, and carefully protected during the construction period. Detailed tree protection specification shall be allowed and included in the Contract Specification, which specifying the tree protection requirement, submission and approval system, and the tree monitoring system.</p>	Work site/ During design stage & construction period	√

Type of Impact	Environmental Protection Measures	Location/ Timing	Status
Landscape & Visual	<p><u>Construction Light</u></p> <p>All security floodlights for construction sites shall be equipped with adjustable shield, frosted diffusers and reflective covers, and be carefully controlled to minimize light pollution and night-time glare to nearby residences and GIC users. The Contractor shall consider other security measures which shall minimize the visual impacts.</p>	Work site / During design stage & construction period	√
Landscape & Visual	<p><u>Tree Transplanting</u></p> <p>Apart from the 18 numbers of "<i>Leucaena leucocephala</i>", which are proposed to be felled in accordance with ETWB TCW No. 3/2006, all the affected trees shall be transplanted. Where practicable, trees shall be directly transplanted to permanent on-site locations. The location of the transplanted tree is shown in Figure 8.9.1.</p>	Work site / During design stage & construction period	Δ. Tree transplantation in progress.
Landscape & Visual	<p><u>Tree Compensation Ratio</u></p> <p>The total number of compensatory trees planted in the project area shall not be less than 1:1 ratios by new trees. Required numbers and locations of compensatory trees shall be determined and agreed with Government during the tree felling application process under ETWCTC 3/2006. Compensatory trees shall be at least heavy standard size to create "immediate" greening effect. 81 numbers of "<i>Cassia surattensis</i>" will be provided as the additional compensatory planting for loss of greenery in the area due to removal of the affected trees. The location of the additional compensatory planting is shown in Figure 8.9.1.</p>	Work site / During design stage & construction period	N/A
Landscape & Visual	<p><u>Re-use of Existing Soil and Advance formation of Planting Area</u></p> <p>Existing topsoil shall be re-used where possible for new planting areas within the project. Advance formation of planting area and early implementation of the plating works can minimize adverse impact on trees. The construction program shall consider using the soil removed from one phase for backfilling another. Suitable storage ground, gathering ground and mixing ground may be set up on-site as necessary.</p>	Work site / During design stage & construction period	√

Type of Impact	Environmental Protection Measures	Location/ Timing	Status
Landscape & Visual	<p><u>Establishment Period</u></p> <p>12 month establishment period for the soft landscape works will be allowed in the main contract. Most construction contracts in Hong Kong require the Contractor to carry out routine horticultural operations, including watering, pruning, weeding, pest control, replacement of dead plants etc. to ensure healthy establishment of new planting during a 12 month establishment period. This period also serves as a kind of warranty / guarantee on the quality of the plants supplied and installed by the Contractor. Monthly monitoring during the first year of establishment period is recommended.</p>	Work site/ During operation period	N/A. To be implemented during operation phase of Project.
Landscape & Visual	<p><u>Re-instatement of excavated Area</u></p> <p>All excavated area and disturbed area for utilities diversion, temporary road diversion, and pipeline works will be reinstated to former conditions, subject to applicable Government Standards.</p>	Work site / During design stage & operation period	N/A. To be implemented during operation phase of Project.
Landscape & Visual	<p><u>Appearance and Greening for the proposed structures</u></p> <p>Compatible design, construction materials and surface finishes of the proposed structure should match with the nearby existing external appearance of PPSTW buildings for achieving visual uniformity. Finishing materials shall have due consideration to form, basic color, color/ tone variation, micro-and macro-texture, and reflectivity/ light absorbance to avoid glare. Planting, such as turf, low groundcovers and climbers, may also be planted on top of these elements to provide greening and aesthetic effect.</p>	Work site / During design stage & operation period	N/A. To be implemented during operation phase of Project.
<i>Summary of Key Environmental Mitigation Measures in Contract Requirements</i>			
Air Quality	Only Ultra-low-sulphur diesel (ULSD) should be used for all diesel-operated plants and equipments on site	Work sites / during construction period	√
Air Quality and Noise	Plants and equipments of good operation conditions should be used on site.	Work sites / during construction period	√
Noise	No diesel hammers should be used for piling works	Work sites / during construction period	√
Noise	Construction Noise Permits (CNP) should be applied for works conducted outside non-restricted hours.	Work sites / during construction period	√
Noise	Quiet construction equipments and the quietest practicable working	Work sites / during construction period	√

Type of Impact	Environmental Protection Measures	Location/ Timing	Status
	methodologies should be adopted for works whenever feasible. Noise labels should be provided for air compressors. Hoods and cover panels of generators and air compressors should be closed during operation. Noise labels should be provided for air compressors and hand-held percussive breakers.		
Waste Management	Temporary works construction on site should minimize the use of timber to reduce the quantity of C&D waste generated during works period.	Work sites / during construction period	√
Landscape and Visual	Retained or to-be-transplanted trees on site should be properly protected from physical damages and soil compacts with temporary fencing or hessian armouring whenever feasible.	Work sites / during construction period	<>

Remark:

- √ Compliance of Mitigation Measures
- <> Compliance of Mitigation but need improvement
- x Non-compliance of Mitigation Measures
- ▲ Non-compliance of Mitigation Measures but rectified by ATAL-Degrémont-China State JV
- Δ Deficiency of Mitigation Measures but rectified by ATAL-Degrémont-China State JV
- N/A Not Applicable in Reporting Period

Annex I Summary of Mitigation Measures Implementation Schedule (September 2012)

Type of Impact	Environmental Protection Measures	Location/ Timing	Status
<i>Summary of Environmental Mitigation Measures in the EIA and EM&A Manual</i>			
<i>Construction Phase</i>			
Air Quality	Dust mitigation measures stipulated in <i>the Air Pollution Control (Construction Dust) Regulation</i> shall be incorporated to control Post emission. Notice shall be given to authority prior to commencing of work.	Work sites / during construction period	Notice of works commencement was submitted to EPD on 3 August 2010.
Water Quality	The practices outlined in ProPECC PN 1/94 Construction Site Drainage should be adopted. It is recommended to install perimeter channels in the works areas to intercept runoff as site boundary prior to the commencement of any earthwork. To prevent storm runoff from washing across exposed soil surfaces, intercepting channels should be provided. Drainage channels are also required to convey site runoff to sand/silt traps and oil interceptors. Provision of regular cleaning and maintenance can ensure the normal operation of these facilities throughout the construction period. Any practical options for the diversion and re-alignment of drainage should comply with both engineering and environmental requirements in order to ensure adequate hydraulic capacity of all drains.	Work site/During the construction period	√
Water Quality	There is a need to apply to EPD for a discharge license under the WPCO for discharging effluent from the construction site. The discharge quality is required to meet the requirements specified in the discharge license. All the runoff and wastewater generated from the works areas should be treated so that it satisfies all the standards listed in the TM-DSS. Reuse and recycling of the treated effluent can minimize water consumption and reduce the effluent discharge volume. The beneficial uses of the treated effluent may include dust suppression, wheel washing and general cleaning. If monitoring of the treated effluent quality from the works areas is required during the construction phase of the Project, the monitoring should be carried out in accordance with the WPCO license which is under the ambit of regional office (RO) of EPD.	Work site/During the construction period	√ Discharge licence was awarded by EPD on 7 December 2010.
Water Quality	The construction programme should be properly planned to minimize soil excavation, if any, in rainy seasons. This prevents soil erosion from	Work site/During the construction period	√

Type of Impact	Environmental Protection Measures	Location/ Timing	Status
	<p>exposed soil surfaces. Any exposed soil surfaces should also be properly protected to minimize dust emission. In areas where a large amount of exposed soil exists, earth bunds or sand bags should be provided. Exposed stockpiles should be covered with tarpaulin or impervious sheets at all times. The stockpiles of materials should be placed at locations away from any stream course so as to avoid releasing materials into the water bodies. Final surfaces of earthworks should be compacted and protected by permanent work. It is suggested that haul roads should be paved with concrete and the temporary access roads protected using crushed stone or gravel, wherever practicable. Wheel washing facilities should be provided at all site exists to ensure that earth, mud and debris would not be carried out of the works areas by vehicles.</p>		
Water Quality	<p>Good sites practices should be adopted to clean the rubbish and litter on the construction sites so as to prevent the rubbish and litter from spreading from the site area. It is recommended to clean the construction sites on a regular basis.</p>	Work site/ During the construction period	√
Water Quality	<p>The presence of construction workers generates sewage. It is recommended to provide sufficient chemical toilets in the works areas. The toilet facilities should be more than 30m from any watercourse. A licensed water collector should be deployed to clean the chemical toilets on a regular basis. The construction workers can also make use of the existing toilet facilities within the PPSTW as necessary.</p>	Work site/ During the construction period	√
Water Quality	<p>Notices should be posted at conspicuous locations to remind the workers not to discharge any sewage or wastewater into the nearby environment during the construction phase of the project. Regular environmental audit on the construction phase of the project. Regular environmental audit on the construction site can provide an effective control of any malpractices and can achieve continual improvement of environmental performance on site.</p>	Work site/ During the construction period	<>
Waste Management	<p>Contractor must register as a chemical waste producer if chemical wastes would be produced from the construction activities. The Waste Disposal Ordinance (Cap 354) and its subsidiary regulations in particular the Waste Disposal (Chemical Waste) (General) Regulation</p>	Work site/ During the construction period	√

Type of Impact	Environmental Protection Measures	Location/ Timing	Status
	should be observed and complied with for control of chemical wastes.		
Waste Management	Any service shop and maintenance facilities should be located on hard standings within a bunded area, and stumps and oil interceptors should be provided. Maintenance of vehicles and equipment involving activities with potential for leakage and spillage should only be undertaken within the areas appropriately equipped to control these discharges.	Work site/ During the construction period	√
Waste Management	<p>Disposal of chemical wastes should be carried out in compliance with the Waste Disposal Ordinance. The Code of Practice on the Packaging, Labelling and Storage of Chemical Wastes published under the Waste Disposal Ordinance details the requirements to deal with the chemical wastes. General requirements are given as follows:</p> <ul style="list-style-type: none"> • Suitable containers should be used to hold the chemical wastes to avoid leakage or spillage during storage, handling and transport. • Chemical waste containers should be suitably labelled, to notify and warn the personnel who are handling the wastes, to avoid accidents. • Storage area should be selected at a safe location on site and adequate space should be allocated to the storage area. 	Work site/ During the construction period	√
Waste Management	<p><i>Good Site Practices</i> Recommendations for good site practices during the construction activities include:</p> <ul style="list-style-type: none"> • Nomination of an approved person, such as a site manager, to be responsible for good site practices, arrangements for collection and effective disposal to an appropriate facility, of all wastes generated at the site • Training of site personnel in proper waste management and chemical handling procedures • Provision of sufficient waste disposal points and regular collection of waste • Appropriate measures to minimise windblown litter and dust during transportation of waste by either covering trucks or by transporting wastes in enclosed containers 	Work site/ During the construction period	√

Type of Impact	Environmental Protection Measures	Location/ Timing	Status
	<ul style="list-style-type: none"> • Regular cleaning and maintenance programme for drainage systems, sumps and oil interceptors. • Separation of chemical wastes for special handling and appropriate treatment at the Chemical Waste Treatment Facility. 		
Waste Management	<p><i>Waste Reduction Measures</i></p> <p>Waste reduction is best achieved at the planning and design stage, as well as by ensuring the implementation of good site practices. Recommendations to achieve waste reduction include:</p> <ul style="list-style-type: none"> • Segregation and storage of different types of waste in different containers, skips or stockpiles to enhance reuse or recycling of materials and their proper disposal. • Encourage collection of aluminium cans by providing separate labelled bins to enable this waste to be segregated from other general refuse generated by the work force • Proper storage and site practices to minimise the potential for damage or contamination of construction materials. • Plan and stock construction materials carefully to minimise amount of waste generated and avoid unnecessary generation of waste. 	Work site/ During planning & design stage, and construction stage	√
Waste Management	<p><i>General Refuse</i></p> <p>General refuse should be stored in enclosed bins or compaction units separate from C&D material. A reputable waste collector should be employed by the contractor to remove general refuse from the site, separately from C&D material. Preferably an enclosed and covered area should be provided to reduce the occurrence of 'wind blown' light material.</p>	Work site / During the construction period	√
Waste Management	<p><i>Construction and Demolition Material</i></p> <p>In order to minimise the impact resulting from collection and transportation of C&D material for off-site disposal, the excavated</p>	Work site / During design stage & construction period	√

Type of Impact	Environmental Protection Measures	Location/ Timing	Status
	<p>material generated from site formation works for the proposed new facilities and units at the STW should be reused on-site as far as practicable. The surplus excavated material should be disposed of at the designated public fill reception facility, as agreed with the Secretary of the Public Fill Committee, for other beneficial uses.</p>		
Waste Management	<p>Mitigation measures and good site practices should be followed to control potential environmental impact from handling and transportation of C&D material. The mitigation measures include:</p> <ul style="list-style-type: none"> • Where it is unavoidable to have transient stockpiles of C&D material pending collection for disposal, the transient stockpiles shall be located away from waterfront or storm drains as far as possible. • Open stockpiles of construction materials or construction wastes on-site should be covered with tarpaulin or similar fabric. • Skip hoist for material transport should be totally enclosed by impervious sheeting. • Every vehicle should be washed to remove any dusty materials from its body and wheels before leaving a construction site • The area where vehicle washing takes place and the section of the road between the washing facilities and the exit point should be paved with concrete, bituminous materials or hardcores. • The load of dusty materials carried by vehicle leaving a construction site should be covered entirely by clean impervious sheeting to ensure dust materials do not leak from the vehicle. • All dusty materials should be sprayed with water prior to any loading, unloading or transfer operation so as to maintain the dusty materials wet. • The height from which excavated materials are dropped should be controlled to a minimum practical height to limit fugitive dust generation from unloading. 	Work site / During design stage & construction period	√
Waste Management	<p>When disposing C&D material at a public filling facility, it shall be noted that the material shall only consist of earth, building debris and broken rock and concrete. The material shall be free from marine mud, household refuse, plastic, metals, industrial and chemical waste, animal</p>	Work site/ During design stage & construction period	√

Type of Impact	Environmental Protection Measures	Location/ Timing	Status
	<p>and vegetable matter, and other material considered to be unsuitable by the Filling Supervisor. In order to monitor the disposal of the surplus C&D material at the designed public fill reception facility and to control fly tipping, a trip-ticket system should be included as one of the contractual requirements and implemented by an Environmental Team undertaking the Environmental Monitoring and Audit work with reference to the ETWB TCW No. 31/2004 "Trip Ticket System for Disposal of Construction and Demolition Materials" as attached in Appendix 7-1. An Independent Environmental Checker should be responsible for auditing the results of the system.</p>		
Waste Management	<p><i>Chemical Waste</i></p> <p>If chemical wastes are produced at the construction site, the Contractor would be required to register with the EPD as a Chemical Waste Producer and to follow the guidelines stated in the Code of Practice on the Packaging, Labelling and Storage of Chemical Wastes. Good quality containers compatible with the chemical wastes should be used, and incompatible chemicals should be stored separately. Appropriate labels should be securely attached on each chemical waste container indicating the corresponding chemical characteristics of the chemical waste, such as explosive, flammable, oxidizing, irritant, toxic, harmful, corrosive, etc. The Contractor shall use a licensed collector to transport and dispose of the chemical wastes, to either the Chemical Waste Treatment Centre, or another licensed facility, in accordance with the Waste Disposal (Chemical Waste) (General) Regulation.</p>	Work site / During the construction period	√
Landscape & Visual	<p><u>Temporary Tree Nurseries</u></p> <p>Temporary tree nurseries may be set up for the transplanted tree and proposed trees at an early stage to allow small trees to grow during the construction periods. By the time when planting area becomes available, trees mature and increase in trunk & spread size. They will require minimal pruning and suffer much less damage during transplanting when comparing the travel distance from an on-site nursery to an off-site nursery.</p> <p>Besides, these trees may also be positioned as visual mitigation during</p>	Work site/ During design stage & construction period	√. A tree nursery has been set up off-site near the site office.

Type of Impact	Environmental Protection Measures	Location/ Timing	Status
	the construction period.		
Landscape & Visual	<p><u>No-intrusion Zone</u></p> <p>To maximize protection to existing trees and ground vegetation, construction contracts may designate “No-intrusion Zone” to various areas within the site boundary with rigid and durable fencing for each individual no-intrusion zone. The contractor should close monitor and restrict the site working staff not to enter the “no-intrusion zone”, even for non-direct construction activities and storage of equipment.</p>	Work site/ During design stage & construction period	<>
Landscape & Visual	<p><u>Hoarding</u></p> <p>Hoarding or boundary fencing for construction shall be considered. It should be sensitively designed, subtle, camouflaged and more ‘permeable’ so that they fit into the existing environment when looking from outside.</p>	Work site/ During design stage & construction period	√
Landscape & Visual	<p><u>Dust and Erosion Control for Exposed Soil</u></p> <p>Excavation works and demolition of existing building blocks and which will be highly visible form surrounding areas should be well planned and with precautions to suppress dust. Exposed soil shall be covered or ‘camouflaged’ and watered often. Areas that are expected to be left with bare soil for a long period of time after excavation shall be properly covered with suitable protective fabric. Silt and erosion shall be controlled by ground barriers around the slope cutting area..</p>	Work site/ During design stage & construction period	√
Landscape & Visual	<p><u>Existing Tree Record Inventory</u></p> <p>All retained trees should be record photographically at the commencement of the Contract, and carefully protected during the construction period. Detailed tree protection specification shall be allowed and included in the Contract Specification, which specifying the tree protection requirement, submission and approval system, and the tree monitoring system.</p>	Work site/ During design stage & construction period	√

Type of Impact	Environmental Protection Measures	Location/ Timing	Status
Landscape & Visual	<p><u>Construction Light</u></p> <p>All security floodlights for construction sites shall be equipped with adjustable shield, frosted diffusers and reflective covers, and be carefully controlled to minimize light pollution and night-time glare to nearby residences and GIC users. The Contractor shall consider other security measures which shall minimize the visual impacts.</p>	Work site / During design stage & construction period	√
Landscape & Visual	<p><u>Tree Transplanting</u></p> <p>Apart from the 18 numbers of "<i>Leucaena leucocephala</i>", which are proposed to be felled in accordance with ETWB TCW No. 3/2006, all the affected trees shall be transplanted. Where practicable, trees shall be directly transplanted to permanent on-site locations. The location of the transplanted tree is shown in Figure 8.9.1.</p>	Work site / During design stage & construction period	Δ. Tree transplantation in progress.
Landscape & Visual	<p><u>Tree Compensation Ratio</u></p> <p>The total number of compensatory trees planted in the project area shall not be less than 1:1 ratios by new trees. Required numbers and locations of compensatory trees shall be determined and agreed with Government during the tree felling application process under ETWCTC 3/2006. Compensatory trees shall be at least heavy standard size to create "immediate" greening effect. 81 numbers of "<i>Cassia surattensis</i>" will be provided as the additional compensatory planting for loss of greenery in the area due to removal of the affected trees. The location of the additional compensatory planting is shown in Figure 8.9.1.</p>	Work site / During design stage & construction period	N/A
Landscape & Visual	<p><u>Re-use of Existing Soil and Advance formation of Planting Area</u></p> <p>Existing topsoil shall be re-used where possible for new planting areas within the project. Advance formation of planting area and early implementation of the plating works can minimize adverse impact on trees. The construction program shall consider using the soil removed from one phase for backfilling another. Suitable storage ground, gathering ground and mixing ground may be set up on-site as necessary.</p>	Work site / During design stage & construction period	√

Type of Impact	Environmental Protection Measures	Location/ Timing	Status
Landscape & Visual	<p><u>Establishment Period</u></p> <p>12 month establishment period for the soft landscape works will be allowed in the main contract. Most construction contracts in Hong Kong require the Contractor to carry out routine horticultural operations, including watering, pruning, weeding, pest control, replacement of dead plants etc. to ensure healthy establishment of new planting during a 12 month establishment period. This period also serves as a kind of warranty / guarantee on the quality of the plants supplied and installed by the Contractor. Monthly monitoring during the first year of establishment period is recommended.</p>	Work site/ During operation period	N/A. To be implemented during operation phase of Project.
Landscape & Visual	<p><u>Re-instatement of excavated Area</u></p> <p>All excavated area and disturbed area for utilities diversion, temporary road diversion, and pipeline works will be reinstated to former conditions, subject to applicable Government Standards.</p>	Work site / During design stage & operation period	N/A. To be implemented during operation phase of Project.
Landscape & Visual	<p><u>Appearance and Greening for the proposed structures</u></p> <p>Compatible design, construction materials and surface finishes of the proposed structure should match with the nearby existing external appearance of PPSTW buildings for achieving visual uniformity. Finishing materials shall have due consideration to form, basic color, color/ tone variation, micro-and macro-texture, and reflectivity/ light absorbance to avoid glare. Planting, such as turf, low groundcovers and climbers, may also be planted on top of these elements to provide greening and aesthetic effect.</p>	Work site / During design stage & operation period	N/A. To be implemented during operation phase of Project.
<i>Summary of Key Environmental Mitigation Measures in Contract Requirements</i>			
Air Quality	Only Ultra-low-sulphur diesel (ULSD) should be used for all diesel-operated plants and equipments on site	Work sites / during construction period	√
Air Quality and Noise	Plants and equipments of good operation conditions should be used on site.	Work sites / during construction period	√
Noise	No diesel hammers should be used for piling works	Work sites / during construction period	√
Noise	Construction Noise Permits (CNP) should be applied for works conducted outside non-restricted hours.	Work sites / during construction period	√
Noise	Quiet construction equipments and the quietest practicable working	Work sites / during construction period	√

Type of Impact	Environmental Protection Measures	Location/ Timing	Status
	methodologies should be adopted for works whenever feasible. Noise labels should be provided for air compressors. Hoods and cover panels of generators and air compressors should be closed during operation. Noise labels should be provided for air compressors and hand-held percussive breakers.		
Waste Management	Temporary works construction on site should minimize the use of timber to reduce the quantity of C&D waste generated during works period.	Work sites / during construction period	√
Landscape and Visual	Retained or to-be-transplanted trees on site should be properly protected from physical damages and soil compacts with temporary fencing or hessian armouring whenever feasible.	Work sites / during construction period	<>

Remark:

- √ Compliance of Mitigation Measures
- <> Compliance of Mitigation but need improvement
- x Non-compliance of Mitigation Measures
- ▲ Non-compliance of Mitigation Measures but rectified by ATAL-Degrémont-China State JV
- Δ Deficiency of Mitigation Measures but rectified by ATAL-Degrémont-China State JV
- N/A Not Applicable in Reporting Period

Annex I Summary of Mitigation Measures Implementation Schedule (October 2012)

Type of Impact	Environmental Protection Measures	Location/ Timing	Status
<i>Summary of Environmental Mitigation Measures in the EIA and EM&A Manual</i>			
<i>Construction Phase</i>			
Air Quality	Dust mitigation measures stipulated in <i>the Air Pollution Control (Construction Dust) Regulation</i> shall be incorporated to control Post emission. Notice shall be given to authority prior to commencing of work.	Work sites / during construction period	Notice of works commencement was submitted to EPD on 3 August 2010.
Water Quality	The practices outlined in ProPECC PN 1/94 Construction Site Drainage should be adopted. It is recommended to install perimeter channels in the works areas to intercept runoff as site boundary prior to the commencement of any earthwork. To prevent storm runoff from washing across exposed soil surfaces, intercepting channels should be provided. Drainage channels are also required to convey site runoff to sand/silt traps and oil interceptors. Provision of regular cleaning and maintenance can ensure the normal operation of these facilities throughout the construction period. Any practical options for the diversion and re-alignment of drainage should comply with both engineering and environmental requirements in order to ensure adequate hydraulic capacity of all drains.	Work site/During the construction period	√
Water Quality	There is a need to apply to EPD for a discharge license under the WPCO for discharging effluent from the construction site. The discharge quality is required to meet the requirements specified in the discharge license. All the runoff and wastewater generated from the works areas should be treated so that it satisfies all the standards listed in the TM-DSS. Reuse and recycling of the treated effluent can minimize water consumption and reduce the effluent discharge volume. The beneficial uses of the treated effluent may include dust suppression, wheel washing and general cleaning. If monitoring of the treated effluent quality from the works areas is required during the construction phase of the Project, the monitoring should be carried out in accordance with the WPCO license which is under the ambit of regional office (RO) of EPD.	Work site/During the construction period	√ Discharge licence was awarded by EPD on 7 December 2010.
Water Quality	The construction programme should be properly planned to minimize soil excavation, if any, in rainy seasons. This prevents soil erosion from	Work site/During the construction period	√

Type of Impact	Environmental Protection Measures	Location/ Timing	Status
	<p>exposed soil surfaces. Any exposed soil surfaces should also be properly protected to minimize dust emission. In areas where a large amount of exposed soil exists, earth bunds or sand bags should be provided. Exposed stockpiles should be covered with tarpaulin or impervious sheets at all times. The stockpiles of materials should be placed at locations away from any stream course so as to avoid releasing materials into the water bodies. Final surfaces of earthworks should be compacted and protected by permanent work. It is suggested that haul roads should be paved with concrete and the temporary access roads protected using crushed stone or gravel, wherever practicable. Wheel washing facilities should be provided at all site exists to ensure that earth, mud and debris would not be carried out of the works areas by vehicles.</p>		
Water Quality	<p>Good sites practices should be adopted to clean the rubbish and litter on the construction sites so as to prevent the rubbish and litter from spreading from the site area. It is recommended to clean the construction sites on a regular basis.</p>	Work site/ During the construction period	√
Water Quality	<p>The presence of construction workers generates sewage. It is recommended to provide sufficient chemical toilets in the works areas. The toilet facilities should be more than 30m from any watercourse. A licensed water collector should be deployed to clean the chemical toilets on a regular basis. The construction workers can also make use of the existing toilet facilities within the PPSTW as necessary.</p>	Work site/ During the construction period	√
Water Quality	<p>Notices should be posted at conspicuous locations to remind the workers not to discharge any sewage or wastewater into the nearby environment during the construction phase of the project. Regular environmental audit on the construction phase of the project. Regular environmental audit on the construction site can provide an effective control of any malpractices and can achieve continual improvement of environmental performance on site.</p>	Work site/ During the construction period	√
Waste Management	<p>Contractor must register as a chemical waste producer if chemical wastes would be produced from the construction activities. The Waste Disposal Ordinance (Cap 354) and its subsidiary regulations in particular the Waste Disposal (Chemical Waste) (General) Regulation</p>	Work site/ During the construction period	√

Type of Impact	Environmental Protection Measures	Location/ Timing	Status
	should be observed and complied with for control of chemical wastes.		
Waste Management	Any service shop and maintenance facilities should be located on hard standings within a bunded area, and stumps and oil interceptors should be provided. Maintenance of vehicles and equipment involving activities with potential for leakage and spillage should only be undertaken within the areas appropriately equipped to control these discharges.	Work site/ During the construction period	√
Waste Management	<p>Disposal of chemical wastes should be carried out in compliance with the Waste Disposal Ordinance. The Code of Practice on the Packaging, Labelling and Storage of Chemical Wastes published under the Waste Disposal Ordinance details the requirements to deal with the chemical wastes. General requirements are given as follows:</p> <ul style="list-style-type: none"> • Suitable containers should be used to hold the chemical wastes to avoid leakage or spillage during storage, handling and transport. • Chemical waste containers should be suitably labelled, to notify and warn the personnel who are handling the wastes, to avoid accidents. • Storage area should be selected at a safe location on site and adequate space should be allocated to the storage area. 	Work site/ During the construction period	√
Waste Management	<p><i>Good Site Practices</i> Recommendations for good site practices during the construction activities include:</p> <ul style="list-style-type: none"> • Nomination of an approved person, such as a site manager, to be responsible for good site practices, arrangements for collection and effective disposal to an appropriate facility, of all wastes generated at the site • Training of site personnel in proper waste management and chemical handling procedures • Provision of sufficient waste disposal points and regular collection of waste • Appropriate measures to minimise windblown litter and dust during transportation of waste by either covering trucks or by transporting wastes in enclosed containers 	Work site/ During the construction period	<>

Type of Impact	Environmental Protection Measures	Location/ Timing	Status
	<ul style="list-style-type: none"> • Regular cleaning and maintenance programme for drainage systems, sumps and oil interceptors. • Separation of chemical wastes for special handling and appropriate treatment at the Chemical Waste Treatment Facility. 		
Waste Management	<p><i>Waste Reduction Measures</i></p> <p>Waste reduction is best achieved at the planning and design stage, as well as by ensuring the implementation of good site practices. Recommendations to achieve waste reduction include:</p> <ul style="list-style-type: none"> • Segregation and storage of different types of waste in different containers, skips or stockpiles to enhance reuse or recycling of materials and their proper disposal. • Encourage collection of aluminium cans by providing separate labelled bins to enable this waste to be segregated from other general refuse generated by the work force • Proper storage and site practices to minimise the potential for damage or contamination of construction materials. • Plan and stock construction materials carefully to minimise amount of waste generated and avoid unnecessary generation of waste. 	Work site/ During planning & design stage, and construction stage	√
Waste Management	<p><i>General Refuse</i></p> <p>General refuse should be stored in enclosed bins or compaction units separate from C&D material. A reputable waste collector should be employed by the contractor to remove general refuse from the site, separately from C&D material. Preferably an enclosed and covered area should be provided to reduce the occurrence of 'wind blown' light material.</p>	Work site / During the construction period	√
Waste Management	<p><i>Construction and Demolition Material</i></p> <p>In order to minimise the impact resulting from collection and transportation of C&D material for off-site disposal, the excavated</p>	Work site / During design stage & construction period	√

Type of Impact	Environmental Protection Measures	Location/ Timing	Status
	<p>material generated from site formation works for the proposed new facilities and units at the STW should be reused on-site as far as practicable. The surplus excavated material should be disposed of at the designated public fill reception facility, as agreed with the Secretary of the Public Fill Committee, for other beneficial uses.</p>		
Waste Management	<p>Mitigation measures and good site practices should be followed to control potential environmental impact from handling and transportation of C&D material. The mitigation measures include:</p> <ul style="list-style-type: none"> • Where it is unavoidable to have transient stockpiles of C&D material pending collection for disposal, the transient stockpiles shall be located away from waterfront or storm drains as far as possible. • Open stockpiles of construction materials or construction wastes on-site should be covered with tarpaulin or similar fabric. • Skip hoist for material transport should be totally enclosed by impervious sheeting. • Every vehicle should be washed to remove any dusty materials from its body and wheels before leaving a construction site • The area where vehicle washing takes place and the section of the road between the washing facilities and the exit point should be paved with concrete, bituminous materials or hardcores. • The load of dusty materials carried by vehicle leaving a construction site should be covered entirely by clean impervious sheeting to ensure dust materials do not leak from the vehicle. • All dusty materials should be sprayed with water prior to any loading, unloading or transfer operation so as to maintain the dusty materials wet. • The height from which excavated materials are dropped should be controlled to a minimum practical height to limit fugitive dust generation from unloading. 	Work site / During design stage & construction period	√
Waste Management	<p>When disposing C&D material at a public filling facility, it shall be noted that the material shall only consist of earth, building debris and broken rock and concrete. The material shall be free from marine mud, household refuse, plastic, metals, industrial and chemical waste, animal</p>	Work site/ During design stage & construction period	√

Type of Impact	Environmental Protection Measures	Location/ Timing	Status
	<p>and vegetable matter, and other material considered to be unsuitable by the Filling Supervisor. In order to monitor the disposal of the surplus C&D material at the designed public fill reception facility and to control fly tipping, a trip-ticket system should be included as one of the contractual requirements and implemented by an Environmental Team undertaking the Environmental Monitoring and Audit work with reference to the ETWB TCW No. 31/2004 "Trip Ticket System for Disposal of Construction and Demolition Materials" as attached in Appendix 7-1. An Independent Environmental Checker should be responsible for auditing the results of the system.</p>		
Waste Management	<p><i>Chemical Waste</i></p> <p>If chemical wastes are produced at the construction site, the Contractor would be required to register with the EPD as a Chemical Waste Producer and to follow the guidelines stated in the Code of Practice on the Packaging, Labelling and Storage of Chemical Wastes. Good quality containers compatible with the chemical wastes should be used, and incompatible chemicals should be stored separately. Appropriate labels should be securely attached on each chemical waste container indicating the corresponding chemical characteristics of the chemical waste, such as explosive, flammable, oxidizing, irritant, toxic, harmful, corrosive, etc. The Contractor shall use a licensed collector to transport and dispose of the chemical wastes, to either the Chemical Waste Treatment Centre, or another licensed facility, in accordance with the Waste Disposal (Chemical Waste) (General) Regulation.</p>	Work site / During the construction period	√
Landscape & Visual	<p><u>Temporary Tree Nurseries</u></p> <p>Temporary tree nurseries may be set up for the transplanted tree and proposed trees at an early stage to allow small trees to grow during the construction periods. By the time when planting area becomes available, trees mature and increase in trunk & spread size. They will require minimal pruning and suffer much less damage during transplanting when comparing the travel distance from an on-site nursery to an off-site nursery.</p> <p>Besides, these trees may also be positioned as visual mitigation during</p>	Work site/ During design stage & construction period	√. A tree nursery has been set up off-site near the site office.

Type of Impact	Environmental Protection Measures	Location/ Timing	Status
	the construction period.		
Landscape & Visual	<p><u>No-intrusion Zone</u></p> <p>To maximize protection to existing trees and ground vegetation, construction contracts may designate “No-intrusion Zone” to various areas within the site boundary with rigid and durable fencing for each individual no-intrusion zone. The contractor should close monitor and restrict the site working staff not to enter the “no-intrusion zone”, even for non-direct construction activities and storage of equipment.</p>	Work site/ During design stage & construction period	<>
Landscape & Visual	<p><u>Hoarding</u></p> <p>Hoarding or boundary fencing for construction shall be considered. It should be sensitively designed, subtle, camouflaged and more ‘permeable’ so that they fit into the existing environment when looking from outside.</p>	Work site/ During design stage & construction period	√
Landscape & Visual	<p><u>Dust and Erosion Control for Exposed Soil</u></p> <p>Excavation works and demolition of existing building blocks and which will be highly visible form surrounding areas should be well planned and with precautions to suppress dust. Exposed soil shall be covered or ‘camouflaged’ and watered often. Areas that are expected to be left with bare soil for a long period of time after excavation shall be properly covered with suitable protective fabric. Silt and erosion shall be controlled by ground barriers around the slope cutting area..</p>	Work site/ During design stage & construction period	<>
Landscape & Visual	<p><u>Existing Tree Record Inventory</u></p> <p>All retained trees should be record photographically at the commencement of the Contract, and carefully protected during the construction period. Detailed tree protection specification shall be allowed and included in the Contract Specification, which specifying the tree protection requirement, submission and approval system, and the tree monitoring system.</p>	Work site/ During design stage & construction period	√

Type of Impact	Environmental Protection Measures	Location/ Timing	Status
Landscape & Visual	<p><u>Construction Light</u></p> <p>All security floodlights for construction sites shall be equipped with adjustable shield, frosted diffusers and reflective covers, and be carefully controlled to minimize light pollution and night-time glare to nearby residences and GIC users. The Contractor shall consider other security measures which shall minimize the visual impacts.</p>	Work site / During design stage & construction period	√
Landscape & Visual	<p><u>Tree Transplanting</u></p> <p>Apart from the 18 numbers of “<i>Leucaena leucocephala</i>”, which are proposed to be felled in accordance with ETWB TCW No. 3/2006, all the affected trees shall be transplanted. Where practicable, trees shall be directly transplanted to permanent on-site locations. The location of the transplanted tree is shown in Figure 8.9.1.</p>	Work site / During design stage & construction period	√. Tree transplantation in progress.
Landscape & Visual	<p><u>Tree Compensation Ratio</u></p> <p>The total number of compensatory trees planted in the project area shall not be less than 1:1 ratios by new trees. Required numbers and locations of compensatory trees shall be determined and agreed with Government during the tree felling application process under ETWCTC 3/2006. Compensatory trees shall be at least heavy standard size to create “immediate” greening effect. 81 numbers of “<i>Cassia surattensis</i>” will be provided as the additional compensatory planting for loss of greenery in the area due to removal of the affected trees. The location of the additional compensatory planting is shown in Figure 8.9.1.</p>	Work site / During design stage & construction period	N/A
Landscape & Visual	<p><u>Re-use of Existing Soil and Advance formation of Planting Area</u></p> <p>Existing topsoil shall be re-used where possible for new planting areas within the project. Advance formation of planting area and early implementation of the plating works can minimize adverse impact on trees. The construction program shall consider using the soil removed from one phase for backfilling another. Suitable storage ground, gathering ground and mixing ground may be set up on-site as necessary.</p>	Work site / During design stage & construction period	√

Type of Impact	Environmental Protection Measures	Location/ Timing	Status
Landscape & Visual	<p><u>Establishment Period</u></p> <p>12 month establishment period for the soft landscape works will be allowed in the main contract. Most construction contracts in Hong Kong require the Contractor to carry out routine horticultural operations, including watering, pruning, weeding, pest control, replacement of dead plants etc. to ensure healthy establishment of new planting during a 12 month establishment period. This period also serves as a kind of warranty / guarantee on the quality of the plants supplied and installed by the Contractor. Monthly monitoring during the first year of establishment period is recommended.</p>	Work site/ During operation period	N/A. To be implemented during operation phase of Project.
Landscape & Visual	<p><u>Re-instatement of excavated Area</u></p> <p>All excavated area and disturbed area for utilities diversion, temporary road diversion, and pipeline works will be reinstated to former conditions, subject to applicable Government Standards.</p>	Work site / During design stage & operation period	N/A. To be implemented during operation phase of Project.
Landscape & Visual	<p><u>Appearance and Greening for the proposed structures</u></p> <p>Compatible design, construction materials and surface finishes of the proposed structure should match with the nearby existing external appearance of PPSTW buildings for achieving visual uniformity. Finishing materials shall have due consideration to form, basic color, color/ tone variation, micro-and macro-texture, and reflectivity/ light absorbance to avoid glare. Planting, such as turf, low groundcovers and climbers, may also be planted on top of these elements to provide greening and aesthetic effect.</p>	Work site / During design stage & operation period	N/A. To be implemented during operation phase of Project.
<i>Summary of Key Environmental Mitigation Measures in Contract Requirements</i>			
Air Quality	Only Ultra-low-sulphur diesel (ULSD) should be used for all diesel-operated plants and equipments on site	Work sites / during construction period	√
Air Quality and Noise	Plants and equipments of good operation conditions should be used on site.	Work sites / during construction period	√
Noise	No diesel hammers should be used for piling works	Work sites / during construction period	√
Noise	Construction Noise Permits (CNP) should be applied for works conducted outside non-restricted hours.	Work sites / during construction period	√
Noise	Quiet construction equipments and the quietest practicable working	Work sites / during construction period	√

Type of Impact	Environmental Protection Measures	Location/ Timing	Status
	methodologies should be adopted for works whenever feasible. Noise labels should be provided for air compressors. Hoods and cover panels of generators and air compressors should be closed during operation. Noise labels should be provided for air compressors and hand-held percussive breakers.		
Waste Management	Temporary works construction on site should minimize the use of timber to reduce the quantity of C&D waste generated during works period.	Work sites / during construction period	√
Landscape and Visual	Retained or to-be-transplanted trees on site should be properly protected from physical damages and soil compacts with temporary fencing or hessian armouring whenever feasible.	Work sites / during construction period	<>

Remark:

- √ Compliance of Mitigation Measures
- <> Compliance of Mitigation but need improvement
- x Non-compliance of Mitigation Measures
- ▲ Non-compliance of Mitigation Measures but rectified by ATAL-Degrémont-China State JV
- Δ Deficiency of Mitigation Measures but rectified by ATAL-Degrémont-China State JV
- N/A Not Applicable in Reporting Period

Annex J

Waste Flow Table

Contract No. : DC/2008/03 - Design, Build and Operate Pillar Point Sewage Treatment Works

Monthly Summary Waste Flow Table

Month	Actual Quantities of Inert C&D Materials (Public Fill) Generated (see Note 13)					Actual Quantities of Non-inert C&D Materials (Construction Waste) Generated (see Note 13)				
	Total Quantity Generated	Reused in the Contract	Reused in other Projects	Disposed as Public Fill		Metals (see Note 1)	Paper / cardboard packaging (see Note 1)	Plastics (see Note 2)	Chemical Waste	Others, e.g. general refuse (see Note 3)
				Rocks & Broken Concrete	Total					
	tonne	tonne	tonne	tonne		kilogram	kilogram	kilogram	Litre	tonne
Nov 2010	2,248	0	0	55	2,248	60	100	0	0	18.05 (see Note 4)
Dec 2010	11,314 (see Note 4)	0	0	225	11,314	100	120	20	0	28.40 (see Note 4)
Jan 2011	58,383 (see Note 4)	0	0	3000	58,384	250	280	60	0	4.59 (see Note 4)
Sub-total	71,945	0	0	71,946		410	500	80	0	51.04
Feb 2011	12,855	0	0	1,050	12,855	100	150	50	0	2.43 (see Note 4)
Mar 2011	22,859	0	0	1,500	22,858	150	180	55	0	9.02
Apr 2011	8,547 (see Note 7)	0	5,684(see Note 5, 7)	550	2,863	50	30	15	0	5.78
Sub-total	44,261	0	5684	38,576.40		300	360	120	0	17.23
May 2011	6,293 (see Note 7)	0	11 (see Note 5, 7)	425	6,282 (see Note 7)	45	25	10	360 (see Note 7)	8.83
Jun 2011	4,587 (see Note 7)	0	0 (see Note 7)	313	4,587 (see Note 7)	40	30	15	0	7.10
Jul 2011	523	0	0	25	523	15	5	10	0	7.20
Sub-total	11,403	0	11	11,392		100	60	35	360	23.13
Aug 2011	571 (see Note 11)	0	0	50	571 (see Note 11)	0	0	15	450 (see Note 8)	6.12
Sept 2011	235	0	0	25	235	20	0	0	0	12.15 (see Note 9)
Oct 2011	5,705 (see Note 10)	0	0	650	5,705 (see Note 10)	100	0	0	0	2.98
Sub-total	6,511	0	0	6,511		120	0	15	450	21.25
Nov 2011	6,294	0	0	775	6,294	50	0	0	0	44.84
Dec 2011	3,011	0	0	263	3,011	20	0	0	0	17.14
Jan 2012	349	64	0	25	285	20	150	0	0	49.01

Month	Actual Quantities of Inert C&D Materials (Public Fill) Generated					Actual Quantities of Non-inert C&D Materials (Construction Waste) Generated				
	Total Quantity Generated	Reused in the Contract	Reused in other Projects	Disposed as Public Fill		Metals (see Note 1)	Paper/ cardboard packaging (see Note 1)	Plastics (see Note 2)	Chemical Waste	Others, e.g. general refuse (see Note 3)
				Rocks & Broken Concrete	Total					
	tonne	tonne	tonne	tonne	tonne	kilogram	kilogram	kilogram	Litre	tonne
Sub-total	9,654	64	0	9,590		90	150	0	0	110.99
Feb 2012	3,371	30	0	2,810	3,341	150	0	0	0	48.72
Mar 2012	6,460	3,000	0	625	3,470	30	0	0	0	41.10
April 2012	3,774	3,000	0	250	774	40	0	0	0	40.01
Sub-total	13,605	6,030	0	7,585		220	0	0	0	129.83
May 2012	7,936	5,600	0	750	2,336	40	0	10	0	75.19
June 2012	13,091	7,500	0	875	5,591	40	35	8	0	66.74
July 2012	11,972	8,600	0	825	3,373	40 (see Note 12)	36	5	0	100.50
Sub-total	32,999	21,700	0	11,299.50		120	70.9	23	0	242.43
Aug 2012	11,660	11,000	0	950	659	30	10	6	0	78.77
Sept 2012	3,055	1,500	0	920	1,555	30	40	5	0	118.80
Oct 2012	2,457	0	0	500	2,457	30	59	8	0	124.04
Sub-total	17,172	12,500	0	4672.2		90	109	19	0	321.61
Total	207,549	40,294	5,695	161,560		1,450	1,250	292	810	917.92

- Notes:
- (1) Metal and paper/cardboard packaging were collected by recycler for recycling.
 - (2) Plastics refer to plastic bottles/containers, plastic sheets/foam from packaging material collected by recycler for recycling.
 - (3) General refuse was disposed of at WENT by subcontractors.
 - (4) The waste flow data for November and December 2010, January and February 2011 was updated in March 2011 based on SOR's comments and has been confirmed by the Contractor.
 - (5) The inert C&D materials were reused in the Contract No. EP/SP/58/08 at Tuen Mun Tsang Tsui.
 - (6) Chemical waste was collected through the licensed chemical waste collector, Dunwell Ind. (Holdings) Ltd, with the waste collection licence number 7111-757-W0015-WC.
 - (7) The waste flow data for April, May and June 2011 was updated in August 2011 based on SOR's comments and has been confirmed by the Contractor.
 - (8) The waste flow data of chemical waste for August 2011 was updated in October 2011 based on Contractor's revised waste flow summary.
 - (9) The waste flow data of general refuse for September 2011 was updated in November 2011 based on Contractor's revised waste flow summary.
 - (10) The waste flow data of C&D material for October 2011 was updated in December 2011 based on Contractor's revised waste flow summary.

- (11) The waste flow data of C&D material for August 2011 was updated in January 2011 based on SOR's comments and has been confirmed by the Contractor.
- (12) The waste flow data of metal and paper/cardboard packaging for June 2011 was revised in August 2012.
- (13) The quantity of inert and non-inert C&D material generated from May 2012 to December and imported fill material was updated by the Contractor on 6 November 2012.
- (14) The quantity of Rocks & Broken Concrete from November 2010 to November 2012 was updated by the Contractor on 12 December 2012.

Annex K

Environmental Complaint,
Environmental Summon
and Presecution Log

Annex K Cumulative Complaint and Summons/Prosecutions Log

Reporting Month	Number of Complaints in Reporting Month	Number of Summons/Prosecutions in Reporting Month
November 2010	0	0
December 2010	0	0
January 2011	0	0
February 2011	0	0
March 2011	0	0
April 2011	0	0
May 2011	0	0
June 2011	0	0
July 2011	0	0
August 2011	0	0
September 2011	0	0
October 2011	0	0
November 2011	0	0
December 2011	0	0
January 2012	0	0
February 2012	0	0
March 2012	0	0

Reporting Month	Number of Complaints in Reporting Month	Number of Summons/Prosecutions in Reporting Month
April 2012	0	0
May 2012	0	0
June 2012	0	0
July 2012	0	0
August 2012	0	0
September 2012	0	0
October 2012	0	0
Overall Total	0	0