



JOB No.: TCS00874/16

**CEDD CONTRACT NO. CV/2012/05
DEVELOPMENT OF A BATHING BEACH AT LUNG MEI,
TAI PO**

**14TH QUARTERLY ENVIRONMENTAL MONITORING AND
AUDIT SUMMARY REPORT (MARCH 2021 – MAY 2021)**

**PREPARED FOR
WELCOME CONSTRUCTION CO., LTD**

Date	Reference No.	Prepared By	Certified By
29 June 2021	TCS00874/16/600/R0760v2	 Nicola Hon (Environmental Consultant)	 T.W. Tam (Environmental Team Leader)

Version	Date	Remarks
1	28 June 2021	First Submission
2	29 June 2021	Amended according to the IEC's comments

Environmental Permit No. EP-388/2010

Development of a Bathing Beach at Lung Mei, Tai Po

Independent Environmental Checker Verification


Reference Document/Plan

Document/ Plan to be Certified / Verified:	Quarterly Environmental Monitoring and Audit Report (March - May 2021)
Date of Report:	29 June 2021
Date received by IEC:	29 June 2021

Reference EP Condition / Updated EM&A Manual Requirement

Environmental Permit Condition / Updated EM&A Manual Reference	Section 11.7
The ET Leader will submit Quarterly EM&A Summary Reports for the construction phase EM&A works only.	

IEC Verification

I hereby verify that the above referenced document/ plan complies with the above referenced condition of EP-388/2010.	
Mr Terence Fong	Date: 30 June 2021
Independent Environmental Checker	

Our ref: P:\Projects\0206709 IEC for Lung Mei EM&A\07_ET Submission\32_Quarterly EM&A Report\14_14th quarterly Mar 2021_May 2021\20210629\R0760v2

EXECUTIVE SUMMARY

- ES.01 Civil Engineering and Development Department (hereafter referred as “CEDD”) is the Project Proponent and the Permit Holder of *Agreement No. CE 59/2005 (EP) Development of a Bathing Beach at Lung Mei, Tai Po* (hereinafter referred as “the Project”), which is a Designated Project to be implemented under Environmental Permit number EP-388/2010 (hereinafter referred as “the EP-388/2010” or “the EP”).
- ES.02 Action-United Environmental Services & Consulting (hereinafter referred as “AUES”) has been commissioned as the Environmental Team for the Project (hereinafter referred as “the ET”) to perform relevant Environmental Monitoring and Audit (EM&A) programme, including baseline and impact environmental monitoring in accordance with the EM&A Manual approved under the Environmental Impact Assessment Ordinance (EIAO).
- ES.03 According to the Approved EM&A Manual [November 2007] (hereinafter referred as ‘the EM&A Manual’), air quality, construction noise and water quality monitoring should be required to be monitored for baseline and during the construction phase of the Project. In January 2018, an updated EM&A Manual (AUES Ref.: TCS00874/16/300/L0085 dated 11 January 2018) was prepared to update of noise and air sensitive receivers and recent site condition for the EM&A programme and it was submitted and approved by EPD in January 2018.
- ES.04 This is the 14th Quarterly EM&A report summarizing the monitoring results and inspection findings for the reporting period from 1st March 2021 to 31st May 2021 (hereinafter ‘the Reporting Period).

ENVIRONMENTAL MONITORING AND AUDIT ACTIVITIES

- ES.05 In view of substantial completion of work and in consideration of the scale and nature of remaining works, it is considered that the potential environmental impacts associated with the remaining works for Project are negligible. A proposal for suspension of air quality and noise monitoring was submitted to EPD on 28 April 2021 and the Proposal was approved by EPD on 17 May 2021.
- ES.06 Upon approval by EPD, the air quality and noise monitoring under the Project was suspended on 17 May 2021. Environmental monitoring activities under the EM&A program in the Reporting Period are summarized in the following table.

Issues	Environmental Monitoring Parameters / Inspection	Sessions ^{Note 1}
Air Quality	1-hour TSP	14
	24-hour TSP	10 (#)
Construction Noise	L _{Aeq(30min)} Daytime	11
Inspection / Audit	ET Regular Bi-weekly Environmental Site Inspection	6
	IEC Monthly Environmental Site Audit	3

Note: 1.) Total sessions are counted by monitoring days.

Remark: (#) There were 15 sessions of 24-hour TSP monitoring scheduled in the Reporting Period, however, 5 session at A7 and 10 sessions of A4 were failed due to the power issue.

BREACH OF ACTION AND LIMIT (A/L) LEVELS

- ES.07 No exceedance of air quality and construction noise monitoring were recorded in this Reporting Period. The statistics of environmental exceedance, NOE issued and investigation of exceedance are summarized in the following table.

Environmental Issues	Monitoring Parameters	Exceedance		Event & Action	
		Action Level	Limit Level	Investigation	Corrective Actions
Air Quality	1-hour TSP	0	0	-	-
	24-hour TSP	0	0	-	-
Construction Noise	L _{Aeq(30min)}	0	0	-	-

NOTIFICATION OF ENVIRONMENTAL COMPLAINT, SUMMONS AND SUCCESSFUL PROSECUTIONS

ES.08 No environmental complaint, summons or successful prosecutions were received and recorded in this Reporting Period.

REPORTING CHANGE

ES.09 No reporting change was made in this Reporting Period.

FUTURE KEY ISSUES

- ES.10 In view of substantial completion of work and in consideration of the scale and nature of remaining works, it is considered that the potential environmental impacts associated with the remaining works for Project are negligible. A proposal for suspension of air quality and noise monitoring was submitted to EPD on 28 April 2021 and the Proposal was approved by EPD on 17 May 2021.
- ES.11 The remaining activities in **May 2021** are E&M Works (installation of CCTV, Public announcement, fan, lighting system etc. at two lookout towers) and landscaping. The potential environmental impacts associated with the remaining works for Project are considered negligible. However, the Contractor should provide dust and noise mitigation measures as applicable, in accordance with the EM&A requirement during the remaining construction phase.

Table of Contents

1. INTRODUCTION	1
1.1 PROJECT BACKGROUND	1
1.2 REPORT STRUCTURE	2
2. PROJECT ORGANIZATION AND CONSTRUCTION PROGRESS	3
2.1 PROJECT ORGANIZATION AND MANAGEMENT STRUCTURE	3
2.2 CONSTRUCTION PROGRESS	3
2.3 SUMMARY OF ENVIRONMENTAL SUBMISSIONS	3
3. SUMMARY OF IMPACT MONITORING REQUIREMENTS	5
3.1 GENERAL	5
3.2 MONITORING PARAMETERS	5
3.3 MONITORING LOCATIONS	5
3.4 MONITORING FREQUENCY AND PERIOD	6
3.5 MONITORING INSTRUMENT	6
3.6 MONITORING PROCEDURES	7
3.7 METEOROLOGICAL INFORMATION	9
3.8 DETERMINATION OF ACTION/LIMIT (A/L) LEVELS	9
3.9 DATA MANAGEMENT AND DATA QA/QC CONTROL	10
4. AIR QUALITY MONITORING	11
4.1 GENERAL	11
4.2 RESULTS OF AIR QUALITY MONITORING	11
5. CONSTRUCTION NOISE MONITORING	13
5.1 GENERAL	13
5.2 RESULTS OF NOISE MONITORING	13
6. WATER QUALITY MONITORING	14
6.1 GENERAL	14
7. WASTE MANAGEMENT	15
7.1 GENERAL	15
7.2 RECORDS OF WASTE QUANTITIES	15
8. ECOLOGY	16
8.1 ECOLOGY MONITORING (MARINE-BASED)	16
9. SITE INSPECTION	19
9.1 REQUIREMENTS	19
9.2 FINDINGS / DEFICIENCIES DURING THE REPORTING MONTH	19
10. ENVIRONMENTAL COMPLAINT AND NON-COMPLIANCE	20
10.1 ENVIRONMENTAL COMPLAINT, SUMMONS AND PROSECUTION	20
10.2 COMPLAINT INVESTIGATION	20
11. IMPLEMENTATION STATUS OF MITIGATION MEASURES	21
11.1 GENERAL	21
11.2 IMPACT FORECAST	21
12. CONCLUSIONS AND RECOMMENDATIONS	22
12.1 CONCLUSIONS	22
12.2 RECOMMENDATIONS	22

LIST OF TABLES

TABLE 2-1	MAJOR CONSTRUCTION ACTIVITIES OF THE WORKS DURING THE REPORTING PERIOD
TABLE 2-1	STATUS OF ENVIRONMENTAL LICENSES AND PERMITS
TABLE 2-2	SUBMISSION STATUS AS UNDER THE EP STIPULATION
TABLE 3-1	SUMMARY OF EM&A IMPACT MONITORING REQUIREMENTS
TABLE 3-2	LOCATION OF AIR QUALITY MONITORING
TABLE 3-3	DESIGNATED NOISE MONITORING STATION ACCORDING TO THE EM&A MANUAL
TABLE 3-4	NOISE MONITORING STATIONS OF THE EM&A PROGRAMME
TABLE 3-5	AIR QUALITY MONITORING EQUIPMENT
TABLE 3-6	CONSTRUCTION NOISE MONITORING EQUIPMENT
TABLE 3-7	ACTION AND LIMIT LEVELS FOR AIR QUALITY
TABLE 3-8	ACTION AND LIMIT LEVELS FOR CONSTRUCTION NOISE, dB(A)
TABLE 4-1	SUMMARY OF 24-HOUR AND 1-HOUR TSP MONITORING RESULTS
TABLE 4-2	SUMMARIES OF BREACHES OF AIR QUALITY A/L LEVELS
TABLE 5-1	SUMMARY OF CONSTRUCTION NOISE MONITORING RESULTS
TABLE 5-2	SUMMARIES OF BREACHES OF CONSTRUCTION NOISE A/L LEVELS
TABLE 7-1	SUMMARY OF QUANTITIES OF INERT C&D MATERIALS
TABLE 7-2	SUMMARY OF QUANTITIES OF C&D WASTES
TABLE 8-1	SUMMARY OF SUBMISSION FOR SEAHORSE MONITORING
TABLE 8-2	SUMMARY OF SUBMISSION FOR MARINE ECOLOGICAL MONITORING
TABLE 9-1	SUMMARY OF SITE OBSERVATIONS
TABLE 10-1	STATISTICAL SUMMARY OF ENVIRONMENTAL COMPLAINTS
TABLE 10-2	STATISTICAL SUMMARY OF ENVIRONMENTAL SUMMONS
TABLE 10-3	STATISTICAL SUMMARY OF ENVIRONMENTAL PROSECUTION
TABLE 11-1	ENVIRONMENTAL MITIGATION MEASURES IN THE REPORTING MONTH

LIST OF APPENDICES

APPENDIX A	LAYOUT PLAN OF THE PROJECT
APPENDIX B	ORGANIZATION STRUCTURE AND CONTACT DETAILS
APPENDIX C	MONITORING LOCATION
APPENDIX D	EVENT AND ACTION PLAN
APPENDIX E	DATABASE OF MONITORING RESULTS
APPENDIX F	GRAPHICAL PLOTS OF MONITORING RESULTS
APPENDIX G	WEATHER INFORMATION
APPENDIX H	WASTE FLOW TABLE
APPENDIX I	IMPLEMENTATION SCHEDULE OF ENVIRONMENTAL MITIGATION MEASURES

1. INTRODUCTION

1.1 PROJECT BACKGROUND

- 1.1.1 Civil Engineering and Development Department (hereafter referred as “CEDD”) is the Project Proponent and the Permit Holder of *Agreement No. CE 59/2005 (EP) Development of a Bathing Beach at Lung Mei, Tai Po* (hereinafter referred as “the Project”), which is a Designated Project to be implemented under Environmental Permit number EP-388/2010 (hereinafter referred as “the EP-388/2010” or “the EP”).
- 1.1.2 The major construction activities of the Project comprise construction of 200-metre long bathing beach with a groyne at each end, a shark prevention net; a public car park; retaining walls; and the associated roadworks, drainage and sewerage works. Layout plan of the Project is shown in *Appendix A*. Designated works of the Project under the EP shall include:
- (i) Construction of a 200m long beach with a groyne at each end of the beach which includes dredging and sandfilling works;
 - (ii) Construction of one culvert at the eastern side of the beach and another small section of culvert and open drainage channel with gabion embankments at the western end, both to collect and divert surface runoff from upstream locations; and
 - (iii) Construction of a beach building with associated beach building facilities, kiosk and a carpark and associated road improvement works adjoining the facility.
- 1.1.3 CEDD is Site Resident Engineers (hereinafter referred as “SRE”) responsible for the Project management; Welcome Construction CO., Ltd is a Main Contractor (hereinafter referred as “the Main Contractor”) responsible to construction of the Project Works; and Action-United Environmental Services & Consulting (hereinafter referred as “AUES”) has been commissioned as an Independent Environmental Team (hereinafter referred as “the ET”) to implement the relevant EM&A program in accordance with the approved EM&A Manual, as well as the associated duties. Moreover, Environmental Resources Management is Independent Environmental Checker (hereinafter referred as “IEC”) of the Project.
- 1.1.4 As part of the EM&A program, baseline monitoring to determine the ambient environmental conditions including air quality, noise and water quality were undertaken between **7 June 2017** and **21 October 2017**. After completed baseline monitoring, Baseline Monitoring Report for Air Quality and Noise (*AUES Ref.: TCS00874/16/600/R0022v3*) and Baseline Monitoring Report for Water Quality (*AUES Ref.: TCS00874/16/600/R0036v2*) has been verified by IEC and submitted to EPD for endorsement. These baseline monitoring reports has summarized the key findings of baseline condition and determined a set of Action and Limit Levels (A/L Levels) based on the baseline data. The A/L Levels will serve as the yardsticks for assessing the acceptability of the environmental impact during construction phase of the Project Works impact monitoring.
- 1.1.5 The construction phase of the Project commenced on 1st December 2017. Accordingly, the impact monitoring of the EM&A programme commenced on the same date.
- 1.1.6 As advised by the Contractor and confirmed by CEDD, all marine dredging was completed in late October 2019 and all sand laying underwater has been substantially completed in late August 2020. It is confirmed that no further filling operation in the site after sub-tidal profile survey check conducted on 31 August 2020 and CEDD have no adverse comment on it. The standing type silt curtain installed as per Figure 3 of the Environmental Permit No. EP-388/2010 was removed and the shark prevention net was installed on 17 September 2020. In view of completion of all the marine activities including dredging and sand laying underwater, the impact marine water quality monitoring for the Project was terminated on 31 August 2020 according to the updated EM&A Manual Section 5.1.5. The notification of termination of impact marine water quality monitoring was issued to CEDD, IEC and EPD without adverse comment received.
- 1.1.7 In view of substantial completion of work and in consideration of the scale and nature of

remaining works, it is considered that the potential environmental impacts associated with the remaining works for Project are negligible. A proposal for suspension of air quality and noise monitoring was submitted to EPD on 28 April 2021 and the Proposal was approved by EPD on 17 May 2021.

- 1.1.8 This is the 14th Quarterly EM&A report presenting the monitoring results and inspection findings for the reporting period from 1st March 2021 to 31st May 2021.

1.2 REPORT STRUCTURE

- 1.2.1 The Quarterly EM&A Report is structured into the following sections:-

<i>Section 1</i>	Introduction
<i>Section 2</i>	Project Organization and Construction progress
<i>Section 3</i>	Summary of Impact Monitoring Requirements
<i>Section 4</i>	Air Quality Monitoring
<i>Section 5</i>	Construction Noise Monitoring
<i>Section 6</i>	Water Quality Monitoring
<i>Section 7</i>	Waste Management
<i>Section 8</i>	Ecology
<i>Section 9</i>	Site Inspection
<i>Section 10</i>	Environmental Complaint and non-compliance
<i>Section 11</i>	Implementation Status of Mitigation Measures
<i>Section 12</i>	Conclusion and Recommendation

2. PROJECT ORGANIZATION AND CONSTRUCTION PROGRESS

2.1 PROJECT ORGANIZATION AND MANAGEMENT STRUCTURE

2.1.1 Organization structure and contact details of relevant parties with respect to on-site environmental management are shown in [Appendix B](#).

2.2 CONSTRUCTION PROGRESS

2.2.1 The major construction activities undertaken in the Reporting Period are listed below:-

Table 2-1 Major Construction Activities of the Works during the Reporting Period

Month	Major Construction Activities
March 2021	<ul style="list-style-type: none"> E&M works; Landscaping; Lookout tower finishing works; and Speed enforcement camera
April 2021	<ul style="list-style-type: none"> E&M works (installation of CCTV, public announcement, fan and lighting system etc.); Landscaping; Lookout tower finishing works; and Speed enforcement camera
May 2021	<ul style="list-style-type: none"> E&M works (installation of CCTV, public announcement, fan and lighting system etc.); and Landscaping

2.3 SUMMARY OF ENVIRONMENTAL SUBMISSIONS

2.3.1 Summary of currently relevant permits, licenses, and/or notifications on environmental protection for this Project in this Reporting Period is presented in [Table 2-1](#).

Table 2-1 Status of Environmental Licenses and Permits

Item	Description	License/Permit Status		
		Permit no./Account no./ Ref.	From	To
1	Air pollution Control (Construction Dust) Regulation	Ref. Number: 418137	N/A	N/A
2	Chemical Waste Producer Registration	Waste Producers Number (WPN): PN5213-728-W3437-01	21 August 2017	End of Project
3	Water Pollution Control Ordinance	License No.: WT00028905-2017	24 October 2017	31 October 2022
4	Waste Disposal (Charges for Disposal of Construction Waste) Regulation	Billing Account for Disposal of Construction Waste: Account No. 7017686	3 July 2013	End of Project

2.3.2 The submission status as under the EP requirement is presented in [Table 2-2](#).

Table 2-2 Submission Status as under the EP Stipulation

Item	EP condition	Description	Status
1	2.3	Management Organization of the Main Construction Companies	The updated version was submitted in May 2018
2	2.4	Report for Capture and Relocation of Common Rat Snake	Approved by EPD on 15 Sep 2017 (EPD ref.: (15) in EP2/N5/C/46 Pt.6 dated 15 Sep 2017)
3	2.5	Landscape Plan	Re-submitted to EPD on 12 April 2021

Item	EP condition	Description	Status
4	3.12	Mangrove Seedling Planting Proposal	Approved by EPD on 22 April 2021 (EPD ref.:) in EP2/N5/C/46 Pt.9 dated 22 April 2021)
5	3.13	Detailed Landscape As-built Drawing(s)	Re-submitted to EPD on 7 May 2021
6	4.3	Baseline Monitoring Report for Air Quality and Noise (<i>AUES Ref.: TCS00874/16/600/R0022v3</i>)	Approved by EPD on 8 Jan 2018 (EPD ref.: (36) in EP2/N5/C/46 Pt.6 dated 8 Jan 2018)
7		Baseline Monitoring Report for Water Quality(<i>AUES Ref.: TCS00874/16/600/R0036v2</i>)	Approved by EPD on 10 Jan 2018 (EPD ref.: (37) in EP2/N5/C/46 Pt.6 dated 10 Jan 2018)

3. SUMMARY OF IMPACT MONITORING REQUIREMENTS

3.1 GENERAL

3.1.1 The EM&A requirements are set out in the EM&A manual and environmental issues such as air quality, construction noise and water quality were identified as the key issues during the construction phase of the Project. In view of completion of all the marine activities, the impact marine water quality monitoring for the Project was terminated on 31 August 2020 according to the updated EM&A Manual Section 5.1.5. A summary of the EM&A requirements for air quality and noise monitoring are presented in the sub-sections below.

3.2 MONITORING PARAMETERS

3.2.1 According to the Project EM&A Manual, the impact monitoring program covers the following environmental issues:

- Air Quality;
- Construction Noise

3.2.2 A summary of the monitoring parameters is presented in *Table 3-1* below.

Table 3-1 Summary of EM&A Impact Monitoring Requirements

Environmental Issue	Parameters
Air Quality	<ul style="list-style-type: none"> • 1-hour TSP • 24-hour TSP
Noise	<ul style="list-style-type: none"> • Leq (30min) in six consecutive Leq(5 min) between 07:00-19:00 on normal weekdays

3.3 MONITORING LOCATIONS

Air Quality

3.3.1 There are air quality monitoring locations (A4 and A6) recommended in Section 3.1 of the EM&A Manual. During liaison with the landlord of A6, he refused to provide access and location for installation of High Volume Air Sampler (HVAS). Therefore, alternative location (A7) was proposed by ET in accordance with Section 3.4 of the EM&A Manual. The proposed alternative locations are considered capable of effectively representing the baseline conditions at the impact monitoring locations. The proposal (*ref no.: TCS00874/16/300/L0016b*) for alternative monitoring locations was verified by IEC and it has been submitted to EPD for approval on 8 May 2017. The air quality monitoring locations are in *Table 3-2* and illustrated in *Appendix C*.

Table 3-2 Location of Air Quality Monitoring

Station ID	Location
A4	No. 101 Lung Mei Tsuen
A7	Hong Kong Eco-Farm

Construction Noise

3.3.2 According to Section 4.1 of the EM&A Manual, four designated noise sensitive receivers (N1, N2, N3 and N4) were recommended and they are listed in *Table 3-3*.

Table 3-3 Designated Noise Monitoring Station according to the EM&A Manual

NSR	Location
N1	Village house - No. 165A Lung Mei
N2*	Village house - No. 103 Lung Mei
N3	Village house - No. 70 Lo Tsz Tin
N4	Village house - No. 79 Lo Tsz Tin

Remarks: (*)Noise monitoring should be conducted at N2a (i.e House No. 101 Lung Mei) if it is changed to residential use during construction phase.

3.3.3 As confirmed on the first day of baseline monitoring, N2a (House no. 101 Lung Mei) has been changed to residential use. Therefore, the noise monitoring is conducted at N2a and to replace N2. Moreover, due to the lack of accessibility of noise monitoring at NSR N3 (Village house – No. 70 Lo Tsz Tin), alternative location was proposed to replace N3 to carry out the noise monitoring. Having reviewed the surrounding condition, NSR N3a (Village house – No. 66C Lo Tsz Tin) was proposed with the rationales summarized in below.

- 1) The distance between N3 and N3a is about 18 meter apart and N3a locates at close proximity of the project site and major site activities which are likely to have noise impacts;
- 2) N3a is a village type residential house and it is a noise sensitive receiver (NSR);
- 3) Accessibility for noise monitoring work at N3a is available; and
- 4) Minimal disturbance would be only caused to the proposed monitoring location N3a.

3.3.4 The proposal (*ref no.: TCS00874/16/300/L0016b*) for alternative monitoring locations was verified by IEC and it has been submitted to EPD for approval on 8 May 2017. The noise monitoring stations under the EM&A programme are listed in **Table 3-4** and illustrated in [Appendix C](#).

Table 3-4 Noise Monitoring Stations of the EM&A Programme

Station ID	Address
N1	Village house No. 165A of Lung Mei
N2a	Village house No. 101 of Lung Mei
N3a	Village house No. 66C of Lo Tsz Tin
N4	Village house No. 79 of Lo Tsz Tin

3.4 MONITORING FREQUENCY AND PERIOD

3.4.1 The frequency and the duration for impact monitoring are summarized below.

Air Quality Monitoring

- **Parameters:** 1-hour TSP and 24-hour TSP
- **Frequency:** 3 times every six days for 1-hour TSP and once every 6 days for 24-hour TSP
- **Duration:** Throughout the construction period

Noise Monitoring

- **Parameters:** $L_{Aeq(30min)}$ and statistical results L_{10} & L_{90}
- **Frequency:** $Leq(30min)$ in 6 consecutive $Leq(5min)$ for once a week during 07:00-19:00 on normal weekdays
- **Duration:** Throughout the construction period

3.5 MONITORING INSTRUMENT

Air Quality Monitoring

3.5.1 The 24-hour and 1-hour TSP levels shall be measured by following the standard high volume sampling method as set out in the *Title 40 of the Code of Federal Regulations, Chapter 1 (Part 50), Appendix B*. If the ET proposes to use a direct reading dust meter to measure 1-hour TSP levels, it shall submit sufficient information to the IEC to prove that the instrument is capable of achieving a comparable results to the HVS. The instrument should be calibrated regularly, and the 1-hour sampling shall be determined on yearly basis by the HVS to check the validity and accuracy of the results measured by direct reading method. The filter paper of 24-hour TSP measurement shall be determined by HOKLAS accredited laboratory.

3.5.2 All equipment to be used for air quality monitoring is listed in **Table 3-5**.

Table 3-5 Air Quality Monitoring Equipment

Equipment	Model
24-Hour TSP	
High Volume Air Sampler	TISCH High Volume Air Sampler, HVS Model TE-5170
Calibration Kit	TISCH Calibration Kit Mode TE-5025A
1-Hour TSP	
Portable Dust Meter	Sibata LD-3B Laser Dust Meter

Noise Monitoring

3.5.3 Sound level meter in compliance with the International Electrotechnical Commission Publications 651: 1979 (Type 1) and 804: 1985 (Type 1) specifications shall be used for carrying out the noise monitoring. The sound level meter shall be checked using an acoustic calibrator. The wind speed shall be checked with a portable wind speed meter capable of measuring the wind speed in ms^{-1} for reference.

3.5.4 Monitoring equipment to be used for construction noise measurement is listed in *Table 3-6*.

Table 3-6 Construction Noise Monitoring Equipment

Equipment	Model
Integrating Sound Level Meter	Rion NL-52
Acoustic Calibrator	Rion NC-73 / Rion NC-74 / Rion NC-75
Portable Wind Speed Indicator (#)	Anemometer AZ Instrument 8908

(#) *Wind speed is reference data only and there is no calibration certificate for portable wind speed indicator.*

3.6 MONITORING PROCEDURESAir Quality1-hour TSP

3.6.1 Operation of the 1-hour TSP meter will follow manufacturer's Operation and Service Manual.

3.6.2 The 1-hour TSP monitor, brand named "Sibata LD-3B Laser Dust Meter" is a portable, battery-operated laser photometer. The 1-hour TSP meter provides a real time 1-hour TSP measurement based on 90° light scattering. The 1-hour TSP monitor consists of the following:

- A pump to draw sample aerosol through the optic chamber where TSP is measured;
- A sheath air system to isolate the aerosol in the chamber to keep the optics clean for maximum reliability; and
- A built-in data logger compatible with Windows based program to facilitate data collection, analysis and reporting.

3.6.3 The 1-hour TSP meter to be used will be within the valid period, calibrated by the manufacturer prior to purchasing. Zero response of the instrument will be checked before and after each monitoring event. Annually calibration with the High Volume Sampler (HVS) in same condition would be undertaken by the Laboratory.

24-hour TSP

3.6.4 The equipment used for 24-hour TSP measurement is the High Volume Sampler (hereinafter the "HVS") brand named TISCH, Model TE-5170 TSP High Volume Air Sampler, which complied with *EPA Code of Federal Regulation, Appendix B to Part 50*. The HVS consists of the following:

- An anodized aluminum shelter;
- A 8"x10" stainless steel filter holder;
- A blower motor assembly;

- d. A continuous flow/pressure recorder;
 - e. A motor speed-voltage control/elapsed time indicator;
 - f. A 7-day mechanical timer, and
 - g. A power supply of 220v/50 hz
- 3.6.5 For HVS for 24-hour TSP monitoring, the HVS is mounted in a metallic cage with a top for protection and also it is sat on the existing ground or the roof of building. The flow rate of the HVS between 0.6m³/min and 1.7m³/min will be properly set in accordance with the manufacturer's instruction to within the range recommended in *EPA Code of Federal Regulation, Appendix B to Part 50*. Glass Fiber Filter 8" x 10" of TE-653 will be used for 24-Hour TSP monitoring and would be supplied by laboratory. The general procedures of sampling are described as below:-
- A horizontal platform with appropriate support to secure the samples against gusty wind should be provided;
 - No two samplers should be placed less than 2 meters apart;
 - The distance between the sampler and an obstacle, such as building, must be at least twice the height that the obstacle protrudes above the sample;
 - A minimum of 2 meters of separation from any supporting structure, measured horizontally is required;
 - Before placing any filter media at the HVS, the power supply will be checked to ensure the sampler work properly;
 - The filter paper will be set to align on the screen of HVS to ensure that the gasket formed an air tight seal on the outer edges of the filter. Then filter holder frame will be tightened to the filter hold with swing bolts. The holding pressure should be sufficient to avoid air leakage at the edge.
 - The mechanical timer will be set for a sampling period of 24 hours (00:00 mid-night to 00:00 mid-night next day). Information will be recorded on the field data sheet, which would be included the sampling data, starting time, the weather condition at current and the filter paper ID with the initial weight;
 - After sampling, the filter paper will be collected and transfer from the filter holder of the HVS to a sealed envelope and sent to a local HOKLAS accredited laboratory for quantifying.
- 3.6.6 All the sampled 24-hour TSP filters will be collected and put into the filter envelope provided by the laboratory. The sample will be kept in normal air conditioned room conditions, i.e. 70% HR (Relative Humidity) and 25°C and delivery to the office within 48 hours and sent to laboratory for analysis. The sampled filter will be kept in the laboratory for six months prior to disposal.
- 3.6.7 The HVS used for 24-hour TSP monitoring will be calibrated before the commencement for sampling, and after in two months interval for 1 point checking of maintenance and six months interval for five points calibrate in accordance with the manufacturer's instruction using the NIST-certified standard calibrator (TISCH Calibration Kit Model TE-5025A) to establish a relationship between the follow recorder meter reading in cfm (cubic feet per minute) and the standard flow rate, Qstd, in m³/min. Motor brushes of HVS will be regularly replaced of about five hundred hours per time.

Construction Noise

- 3.6.8 As referred to in the Technical Memorandum (TM) issued under the NCO, sound level meters in compliance with the International Electrotechnical Commission Publications 651: 1979 (Type 1) and 804:1985 (Type 1) specifications shall be used for carrying out the noise monitoring. Immediately prior to and following each noise measurement the accuracy of the sound level meter shall be checked using an acoustic calibrator generating a known sound pressure level at a known frequency. Measurements may be accepted as valid only if the calibration levels from before and after the noise measurement agree to within 1.0 dB.
- 3.6.9 All noise measurements will be performed with the meter set to FAST response and on the

A-weighted equivalent continuous sound pressure level (Leq). Leq_(30 min) in six consecutive Leq_(5 min) measurements will be used as the monitoring parameter for the time period between 07:00-19:00 hours on weekdays.

- 3.6.10 The sound level meter will be mounted on a tripod at a height of 1.2 m and placed at the assessment point and oriented such that the microphone is pointed to the site with the microphone facing perpendicular to the line of sight. The windshield will be fitted for all measurements. Where a measurement is to be carried out at a building, the assessment point would normally be at a position 1 m from the exterior of the building façade. Where a measurement is to be made for noise being received at a place other than a building, the assessment point would be at a position 1.2 m above the ground in a free-field situation, i.e. at least 3.5 m away from reflective surfaces such as adjacent buildings or walls.
- 3.6.11 Immediately prior to and following each noise measurement the accuracy of the sound level meter will be checked using an acoustic calibrator generating a known sound pressure level at a known frequency. Measurements will be accepted as valid only if the calibration level from before and after the noise measurement agrees to within 1.0 dB.
- 3.6.12 Noise measurements will not be made in fog, rain, wind with a steady speed exceeding 5m/s or wind with gusts exceeding 10m/s. The wind speed will be checked with a portable wind speed meter capable of measuring the wind speed in m/s.
- 3.6.13 Valid calibration certificates of monitoring equipment of air quality and construction noise are shown in respectively monthly EM&A Reports.

3.7 METEOROLOGICAL INFORMATION

3.7.1 The meteorological information including wind direction, wind speed, humidity, rainfall, air pressure and temperature etc. during impact monitoring is extracted from the closest Hong Kong Observatory Station. To obtain the most appropriate meteorological information where available, Air Temperature/Pressure and Relative Humidity will be extracted from Tai Po Station and wind speed and direction will be extracted from Tai Mei Tuk Station.

3.8 DETERMINATION OF ACTION/LIMIT (A/L) LEVELS

3.8.1 The baseline results form the basis for determining the environmental acceptance criteria for the impact monitoring. A summary of the Action/Limit (A/L) Levels for air quality, construction noise and water quality are shown in **Table 3-7** and **3-8** respectively.

Table 3-7 Action and Limit Levels for Air Quality

Monitoring Station	Action Level ($\mu\text{g}/\text{m}^3$)		Limit Level ($\mu\text{g}/\text{m}^3$)	
	1-hour TSP	24-hour TSP	1-hour TSP	24-hour TSP
A4	275	142	500	260
A7	274	141	500	260

Table 3-8 Action and Limit Levels for Construction Noise, dB(A)

Time Period: 0700-1900 hours on normal weekdays		
Monitoring Location	Action Level	Limit Level ^{Note 1 & Note 2}
N1, N2a, N3a, and N4	When one documented complaint is received	75

Note 1: Acceptable Noise Levels for school should be reduced to 70 dB(A) and 65 dB(A) during examination period

Note 2: If works are to be carried out during restricted hours, the conditions stipulated in the construction noise permit issued by the NCA have to be followed.

Event Action Plan

3.8.2 Should non-compliance of the environmental quality criteria occurs, remedial actions will be triggered according to the Event and Action Plan which presented in [Appendix D](#).

3.9 DATA MANAGEMENT AND DATA QA/QC CONTROL

3.9.1 The impact monitoring data were handled by the ET's in-house data recording and management system.

3.9.2 The monitoring data recorded in the equipment were downloaded directly from the equipment at the end of each monitoring day. The downloaded monitoring data were input into a computerized database properly maintained by the ET. The laboratory results were input directly into the computerized database and checked by personnel other than those who input the data.

3.9.3 For monitoring parameters that require laboratory analysis, the local laboratory shall follow the QA/QC requirements as set out under the HOKLAS scheme for the relevant laboratory tests.

4. AIR QUALITY MONITORING

4.1 GENERAL

4.1.1 In the Reporting Period, air quality monitoring was performed at the proposed monitoring locations A4 and A7.

4.2 RESULTS OF AIR QUALITY MONITORING

4.2.1 There were **15** sessions of 24-hour TSP monitoring scheduled in the Reporting Period. However, power supply for HVS at Location A4 was disconnected by the Contractor since 30 March 2021, thus 10 sessions of 24-hour TSP at A4 were unable to carry out in the Reporting Period. Besides, power supply for HVS at Location A7 was disconnected by the Contractor on 30 March 2021 and reconnected on 9 April 2021, and interrupted again on 5 May 2021. The incident of 24-hour TSP monitoring are summarized in below table.

Scheduled Monitoring Date	Status of 24-hr TSP Monitoring	
	A4	A7
30-Mar-21	Power failure	Power failure
1 Apr 2021	Power failure	Power failure
7 Apr 2021	Power failure	Make-up sample was conducted on 9 Apr 2021
13 Apr 2021	Power failure	On Schedule
19 Apr 2021	Power failure	On Schedule
24 Apr 2021	Power failure	On Schedule
29 Apr 2021	Power failure	On Schedule
5 May 2021	Power failure	Power failure
11 May 2021	Power failure	Power failure
17 May 2021	Power failure	Power failure

4.2.2 Summary of air quality monitoring results during the Reporting Period are tabulated in **Table 4-1**. The database of monitoring result throughout the Reporting Period is shown in **Appendix E** and the relevant graphical plots are shown in **Appendix F**.

Table 4-1 Summary of 24-hour and 1-hour TSP Monitoring Results

Monitoring Location	1-hour TSP ($\mu\text{g}/\text{m}^3$)			24-hour TSP ($\mu\text{g}/\text{m}^3$)		
	Max	Min	Mean	Max	Min	Mean
A4	93	54	71	56	12	30
Record Date	9-Mar-21	26-Apr-21	14 sessions	6-Mar-21	18-Mar-21	5 sessions
A7	93	61	72	137	16	53
Record Date	9-Mar-21	26-Apr-21	14 sessions	24-Apr-21	19-Apr-21	10 sessions

Remark: There were 15 sessions of 24-hour TSP monitoring scheduled in the Reporting Period, however, 5 session at A7 and 10 sessions of A4 were failed due to the power issue.

4.2.3 Breaches of air quality A/L levels and statistical analysis of compliance for the air quality monitoring results are summarized in **Table 4-2**.

Table 4-2 Summaries of Breaches of Air Quality A/L Levels

Location	Exceedance	1-hour TSP	24- hour TSP	Total
A4	Action Level	0	0	0
	Limit Level	0	0	0
A7	Action Level	0	0	0
	Limit Level	0	0	0

4.2.4 As shown in **Tables 4-1 to 4-2**, all the 1-hour and 24-hour TSP monitoring results were below the Action/Limit Levels. No Notification of Exceedance (NOE) was issued in this Reporting Period.

- 4.2.5 The summary of weather conditions during the Reporting Period is presented in [Appendix G](#).
- 4.2.6 Some of the 24-hour TSP monitoring data of Location A4 and A7 were absent in the Reporting Period due to power issue. Although the some events of 24-hour TSP monitoring were not able to carry out, the justification on whether the ability of the EM&A programme to detect air quality impacts can be maintained though monitoring was suspended is presented below.
- (a) All civil works under the Project were substantial completed in the Reporting Period and the impact source from the Project has been largely eliminated. The potential air quality environmental impacts associated with the remaining works were considered negligible. A proposal for suspension of air quality and noise monitoring was submitted to EPD on 28 April 2021 and the Proposal was approved by EPD on 17 May 2021.
 - (b) The 1-hour TSP monitoring was measured *in-situ* during the construction phase and it is capable to readily detect any non-compliance of air quality. During the Reporting Period, the 1-hour TSP monitoring results at Stations A4 and A7 are ranged from $54\mu\text{g}/\text{m}^3$ to $93\mu\text{g}/\text{m}^3$ which are far below the Action/ Limit Level, it is considered non-compliance of air quality of 24-hour TSP was unlikely to triggered.
 - (c) April and May 2021 is typical wet season in Hong Kong and the weather becomes humid and hot. It is considered that the dust impact is not significant when compare to dry season. There were no non-compliance of air quality monitoring results recorded during the dry season in previous months, and it is believed that non-compliance of air quality of 24-hour TSP in April and May 2021 is not anticipated.

5. CONSTRUCTION NOISE MONITORING

5.1 GENERAL

5.1.1 In the Reporting Period, construction noise quality was performed at the designated monitoring locations N1, N2a, N3a and N4.

5.2 RESULTS OF NOISE MONITORING

5.2.1 In the Reporting Period, **11** sessions of noise monitoring conducted. Free-field status were performed at N1 and N3a and façade correction (+3dB(A)) has been added for the correction in according to the acoustical principles and EPD guidelines. The noise monitoring results at the designated locations are summarized in **Tables 5-1**. The database of monitoring result throughout the Reporting Period is shown in **Appendix E** and the relevant graphical plots are shown in **Appendix F**.

Table 5-1 Summary of Construction Noise Monitoring Results

Monitoring Location	Leq, 30min (dB(A))	
	Max	Min
N1 ^(*)	74	59
Record Date	15-Mar-21	14-Apr-21 12-May-21
N2a	74	56
Record Date	15-Mar-21	14-Apr-21
N3a ^(*)	67	51
Record Date	1-Apr-21	14-Apr-21
N4	66	53
Record Date	15-Mar-21	1-Apr-21

Remark:

(*) A façade correction of +3dB(A) has been added according to acoustical principles and EPD guidelines.

5.2.2 Breaches of construction noise A/L levels and statistical analysis of compliance for construction noise monitoring results are summarized in **Table 5-2**.

Table 5-2 Summaries of Breaches of Construction Noise A/L Levels

Station	Limit Level	Action Level	Received Date
N1	0	0	N/A
N2a	0		
N3a	0		
N4	0		

5.2.3 In this Reporting Period, the noise level measured at all designated monitoring locations were below 75dB(A), also no construction noise complaint received. Therefore, no Action and Limit Levels exceedance was triggered and no corrective action required.

6. WATER QUALITY MONITORING

6.1 GENERAL

- 6.1.1 In view of completion of all the marine activities, the impact marine water quality monitoring for the Project was terminated on 31 August 2020 according to the updated EM&A Manual Section 5.1.5. The notification of termination of impact marine water quality monitoring was issued to CEDD, IEC and EPD without adverse comment received. Pursuant to updated EM&A Manual Section 5.1.6, post-project marine water quality monitoring was conducted in September 2020 and October 2020 for 4 weeks to fulfill the EM&A requirement and the results were presented in the monthly EM&A report (October 2020).

7. WASTE MANAGEMENT

7.1 GENERAL

7.1.1 Waste management was carried out by an on-site Environmental Officer or an Environmental Supervisor from time to time.

7.2 RECORDS OF WASTE QUANTITIES

7.2.1 All types of waste arising from the construction work are classified into the following:

- Construction & Demolition (C&D) Material;
- Chemical Waste;
- General Refuse; and
- Excavated Soil.

7.2.2 The quantities of waste for disposal in this Reporting Period are summarized in *Tables 7-1* and *7-2* and the Monthly Summary Waste Flow Table is shown in *Appendix H*. Whenever possible, materials were reused on-site as far as practicable.

Table 7-1 Summary of Quantities of Inert C&D Materials

Types of Waste	Quantity			Disposal Location
	Mar 2021	Apr 2021	May 2021	
Total C&D Materials (Inert) ('000m ³)	0.01	0	0	Tuen Mun Area 38
Reused in this Contract (Inert) ('000m ³)	0	0	0	NA
Reused in other Projects (Inert) ('000m ³)	0	0	0	NA
Disposal as Public Fill (Inert) ('000m ³)	0.01	0	0	Tuen Mun Area 38

Table 7-2 Summary of Quantities of C&D Wastes

Types of Waste	Quantity			Disposal Location
	Mar 2021	Apr 2021	May 2021	
Recycled Metal ('000kg)	0	0	0	NA
Recycled Paper / Cardboard Packing ('000kg)	0	0	0	NA
Recycled Plastic ('000kg)	0	0	0	NA
Chemical Wastes ('000kg)	0	0	0	NA
General Refuse ('000m ³)	0.005	0.0105	0	NENT

8. ECOLOGY

8.1 ECOLOGY MONITORING (MARINE-BASED)

Seahorse Translocation Surveys

8.1.1 The seahorse captured and translocation was conducted in the period of **17 to 20 January 2018**. Since the two tagged seahorses were not recorded at the Ting Kok East reception site during the first 7 days Post-translocation Seahorse Survey on 21 to 27 January 2018, Option 2 of monitoring programme was therefore adopted to perform the Post-translocation Seahorse Survey in accordance with the approved method statement (Seahorses Translocation Plan (Version 1, 11 January 2018) refers). The Post-translocation Seahorse Survey should be performed in the first year for a period of one year after the completion of seahorse translocation. The proposed survey time would be at least 28 man-hours (including 14 man-hours during daytime and 14 man-hours during nighttime for each survey). The survey frequency is listed below:

- Daily for first week
- three times per week for the second to fourth week
- once a week for the second to fourth month
- once a month for the fifth to twelve month

8.1.2 The one year Post-translocation Seahorse Survey at Ting Kok East was completed in January 2019. Post-construction will be undertaken at the installed shark net during the maintenance period of the Project. A summary of submission regarding seahorse monitoring is shown in below *Table 8-1*.

Table 8-1 Summary of Submission for Seahorse Monitoring

EM&A Ref.	Submission	First Submission Date	Latest Version Submission Date	Approval Status
S7.2.3.3	Seahorse Translocation Plan	19 Sep 2017	30 Nov 2017	Approved by EPD
S7.2.3.8	Pre-translocation Survey Report for Seahorse	1 Dec 2018	11 June 2020	Approved by EPD
S7.2.3.4	Seahorse Translocation Report	29 Jan 2018	11 June 2020	Approved by EPD
S7.2.3.9	<i>Post-translocation monitoring report (all reports)</i>			
	1 st Week	29 Jan 2018	To be updated by the Contractor	The report was submitted to EPD on 23 June 2021
	2 nd Week	4 Feb 2018		
	3 rd Week	27 Mar 2018		
	4 th Week	27 Mar 2018		
	Second Month	27 Mar 2018		
	Third Month	27 Mar 2018		
	Fourth Month	25 May 2018		
	Fifth Month	28 August 2018		
	Sixth Month	28 August 2018		
	Seven Month	28 August 2018		
	Eighth Month	4 Oct 2018		
	Ninth Month	19 Oct 2018	12 April 2021	Approved by EPD on 27 Apr 21
	Tenth Month	18 Nov 2018	12 April 2021	
	Eleventh Month	21 Dec 2018	12 April 2021	
	Twelfth Month	15 Feb 2019	12 April 2021	
S7.2.3.10	Post-construction monitoring report	To be submitted	To be submitted	Pending approval

Marine Ecological Monitoring

8.1.3 In accordance to Section 7.2 of the updated EM & A manual, it is required to conducting marine ecological monitoring after marine fauna relocation at a six-monthly interval at (i) vicinity site near bathing beach at Lung Mei and (ii) The Reception Site of Ting Kok East until expiry of the

Contract Maintenance Period.

8.1.4 The objectives of the marine ecological monitoring are to collect data for determining whether there is any impact on the marine ecological resources (i) in the vicinity of the Site due to the development of the bathing beach at Lung Mei, and (ii) at the Reception Site of Ting Kok East due to translocation of the target marine fauna.

Marine Fauna Translocation

8.1.5 Target marine fauna, including fishes, starfish, sea urchins and sea cucumbers, shall be translocated from the intertidal area of the Site at Lung Mei to the intertidal area at the Reception Site of Ting Kok East before commencement of sand filling works or any other works that may cause disturbances to the existing marine ecology. The translocation works shall cover capturing, handling, holding, transporting and releasing of the captured target marine fauna.

8.1.6 Baseline quantitative quadrat surveys were conducted at the vicinity site of Lung Mei beach and Ting Kok East in June 2017. Moreover, fauna translocation was completed in January 2018. After the translocation, marine ecological monitoring was conducted at a six-monthly interval at vicinity site near bathing beach at Lung Mei and the reception Site of Ting Kok East until expiry of the Contract Maintenance Period.

8.1.7 A summary of submission regarding marine ecological monitoring is shown in below *Table 8-2*.

Table 8-2 Summary of Submission for Marine Ecological Monitoring

EM&A Ref.	Submission	First Submission Date	Latest Version Submission Date
S7.2.2.3	Fauna Translocation – Stage 1	9 Oct 2017	18 Dec 2017
S7.2.2.3	Fauna Translocation – Stage 2	19 Dec 2017	28 Dec 2017
S7.2.2.3	Fauna Translocation – Stage 3 and 4	5 Jan 2018	5 Jan 2018
S7.2.2.4	Fauna Translocation Report	29 May 2018	15 Jan 2019
S7.2.1.4 & S7.2.2.6	Report for Baseline Marine Ecological Survey on inter-tidal habitat (Lung Mei)	20 Jul 2017	15 Jan 2019
S7.2.1.4 & S7.2.2.6	Report for Baseline Marine Ecological Survey on inter-tidal habitat (Ting Kok)	26 Jun 2017	5 Oct 2019
S7.2.1.4 & S7.2.2.6	Marine Fauna Post-translocation Monitoring Report for Lung Mei (1 st Report)	11 Jul 2018	15 Dec 2018
S7.2.1.4 & S7.2.2.6	Marine Fauna Post-translocation Monitoring Report for Ting Kok (1 st Report)	11 Jul 2018	15 Dec 2018
S7.2.1.4 & S7.2.2.6	Marine Fauna Post-translocation Monitoring Report for Lung Mei (2 nd Report)	29 Jan 2019	18 May 2019
S7.2.1.4 & S7.2.2.6	Marine Fauna Post-translocation Monitoring Report for Ting Kok (2 nd Report)	11 Jan 2019	18 May 2019
S7.2.1.4 & S7.2.2.6	Marine Fauna Post-translocation Monitoring Report for Lung Mei (3 rd Report)	29 July 2019	The report will be submitted for approval
S7.2.1.4 & S7.2.2.6	Marine Fauna Post-translocation Monitoring Report for Ting Kok (3 rd Report)	29 July 2019	
S7.2.1.4 & S7.2.2.6	Marine Fauna Post-translocation Monitoring Report for Lung Mei (4 th Report)	The report will be submitted for approval	
S7.2.1.4 & S7.2.2.6	Marine Fauna Post-translocation Monitoring Report for Ting Kok (4 th Report)		
S7.2.1.4 & S7.2.2.6	Marine Fauna Post-translocation Monitoring Report for Lung Mei (5 th Report)		
S7.2.1.4 & S7.2.2.6	Marine Fauna Post-translocation Monitoring Report for Ting Kok (5 th Report)		
S7.2.1.4 & S7.2.2.6	Marine Fauna Post-translocation Monitoring Report for Lung Mei (5 th Report)		

EM&A Ref.	Submission	First Submission Date	Latest Version Submission Date
S7.2.2.6	Report for Lung Mei (6 th Report)		
S7.2.1.4 & S7.2.2.6	Marine Fauna Post-translocation Monitoring Report for Ting Kok (6 th Report)		

9. SITE INSPECTION

9.1 REQUIREMENTS

9.1.1 According to the approved EM&A Manual, the environmental site inspection shall be formulation by ET Leader. The site inspection and audits should be conducted twice per month by ET.

9.2 FINDINGS / DEFICIENCIES DURING THE REPORTING MONTH

9.2.1 In this Reporting Period, 6 events of weekly joint site inspection were carried out for Contract 1 to evaluate site environmental performance. The summaries of the findings during site inspection are presented in *Table 9-1* and the details of site inspection can be found in relevant EM&A monthly reports.

Table 9-1 Summary of Site Observations

Reporting Month	Date of site inspection	Nos. of Findings/ Deficiencies	Follow-Up Status
March 2021	15 th and 25 th March 2021	0	NA
April 2021	20 th and 30 th April 2021	0	NA
May 2021	12 th and 31 st May 2021	0	NA

9.2.2 In the Reporting Period, no non-compliance and observation was recorded during the site inspection. The environmental performance of the Project was therefore considered satisfactory.

10. ENVIRONMENTAL COMPLAINT AND NON-COMPLIANCE

10.1 ENVIRONMENTAL COMPLAINT, SUMMONS AND PROSECUTION

10.1.1 In the Reporting Period, no environmental complaint, summons and prosecution was received.

10.1.2 The statistical summary table of environmental complaint, summons and prosecution are presented in *Tables 10-1, 10-2 and 10-3*.

Table 10-1 Statistical Summary of Environmental Complaints

Reporting Period	Environmental Complaint Statistics		
	Frequency	Cumulative	Complaint Nature
1 – 31 March 2021	0	2	Dust (2)
1 – 30 April 2021	0	2	Dust (2)
1 – 31 May 2021	0	2	Dust (2)

Table 10-2 Statistical Summary of Environmental Summons

Reporting Period	Environmental Summons Statistics		
	Frequency	Cumulative	Summons Nature
1 – 31 March 2021	0	0	NA
1 – 30 April 2021	0	0	NA
1 – 31 May 2021	0	0	NA

Table 10-3 Statistical Summary of Environmental Prosecution

Reporting Period	Environmental Prosecution Statistics		
	Frequency	Cumulative	Prosecution Nature
1 – 31 March 2021	0	0	NA
1 – 30 April 2021	0	0	NA
1 – 31 May 2021	0	0	NA

10.2 COMPLAINT INVESTIGATION

10.2.1 In this Reporting Period, no public complaint concerning on construction dust, noise and water quality was received. No complaint investigation was to undertake.

11. IMPLEMENTATION STATUS OF MITIGATION MEASURES

11.1 GENERAL

11.1.1 The environmental mitigation measures that recommended in the Implementation Schedule for Environmental Mitigation Measures (ISEMM) in the approved EM&A Manual covered the issues of dust, noise, water, ecology and waste etc. and they are summarized presented in [Appendix I](#).

11.1.2 The Contractor had been implementing the required environmental mitigation measures according to the Environmental Monitoring and Audit Manual subject to the site condition. Environmental mitigation measures generally implemented by the Contractor in the Reporting Period are summarized in [Table 11-1](#).

Table 11-1 Environmental Mitigation Measures in the Reporting Month

Issues	Environmental Mitigation Measures
Construction Noise	<ul style="list-style-type: none"> Regularly to maintain all plants and only the good condition plants were used on-site ; If possible, all mobile plants onsite operation has located far from NSRs; When machines and plants were not in using, it was switched off; Wherever possible, plant was prevented oriented directly the nearby NSRs; Weekly noise monitoring was conducted to ensure construction noise meet the criteria.
Air Quality	<ul style="list-style-type: none"> Stockpile of dusty material was covered entirely with impervious sheeting or sprayed with water so as to maintain the entire surface wet; The construction plants switched off when it not in use; Water spraying on haul road and dry site area was provided regularly;
Water Quality	<ul style="list-style-type: none"> Debris and refuse generated on-site collected daily; Oils and fuels were stored in designated areas with locks; The chemical waste storage as sealed area provided with locks; Portable chemical toilets were provided on-site. A licensed contractor was regularly disposal and maintenance of these facilities.
Waste and Chemical Management	<ul style="list-style-type: none"> Waste arising kept to a minimum and be handled, transported and disposed of in a suitable manner; Disposal of C&D wastes to any designated public filling facility and/or landfill followed a trip ticket system; and Chemical waste handled in accordance with the Code of Practice on the Packaging, Handling and Storage of Chemical Wastes.
General	<ul style="list-style-type: none"> The site is generally kept tidy and clean. Mosquito control is performed to prevent mosquito breeding on site.

11.2 IMPACT FORECAST

11.2.1 Tentative construction activities to be undertaken in the coming quarter are listed below:-

- E&M Works (Installation of CCTV, Public announcement, fan, lighting system etc. at two lookout towers); and
- Landscaping;

11.2.2 In view of substantial completion of work and in consideration of the scale and nature of remaining works, it is considered that the potential environmental impacts associated with the remaining works for Project are negligible. A proposal for suspension of air quality and noise monitoring was submitted to EPD on 28 April 2021 and the Proposal was approved by EPD on 17 May 2021.

11.2.3 The potential environmental impacts associated with the remaining works for Project are considered negligible. However, the Contractor was reminded that the environmental mitigation measures shall be properly implemented and maintained where applicable, as per the Mitigation Implementation Schedule in [Appendix I](#), in the remaining construction period.

12. CONCLUSIONS AND RECOMMENTATIONS

12.1 CONCLUSIONS

- 12.1.1 This is the **14th** Quarterly EM&A report as presented the monitoring results and inspection findings for the reporting period from **1st March 2021** to **31st May 2021**.
- 12.1.2 In view of substantial completion of work and in consideration of the scale and nature of remaining works, it is considered that the potential environmental impacts associated with the remaining works for Project are negligible. A proposal for suspension of air quality and noise monitoring was submitted to EPD on 28 April 2021 and the Proposal was approved by EPD on 17 May 2021.
- 12.1.3 In this Reporting Period, no construction noise monitoring results that triggered the Limit Level was recorded. No NOE or the associated corrective actions were therefore issued. Moreover, no noise complaint (which is an Action Level exceedance) was received for the Project.
- 12.1.4 In this Reporting Period, no air quality monitoring exceedance was recorded. No NOE or the associated corrective actions were therefore issued.
- 12.1.5 In this Reporting Period, **6** events of weekly joint site inspection were carried out to evaluate site environmental performance. No non-compliance and observation was recorded during the site inspection. The environmental performance of the Project was therefore considered satisfactory.
- 12.1.6 In this Reporting Period, no public complaint concerning on construction dust, noise and water quality was received; no notification of summons or successful prosecution was received.

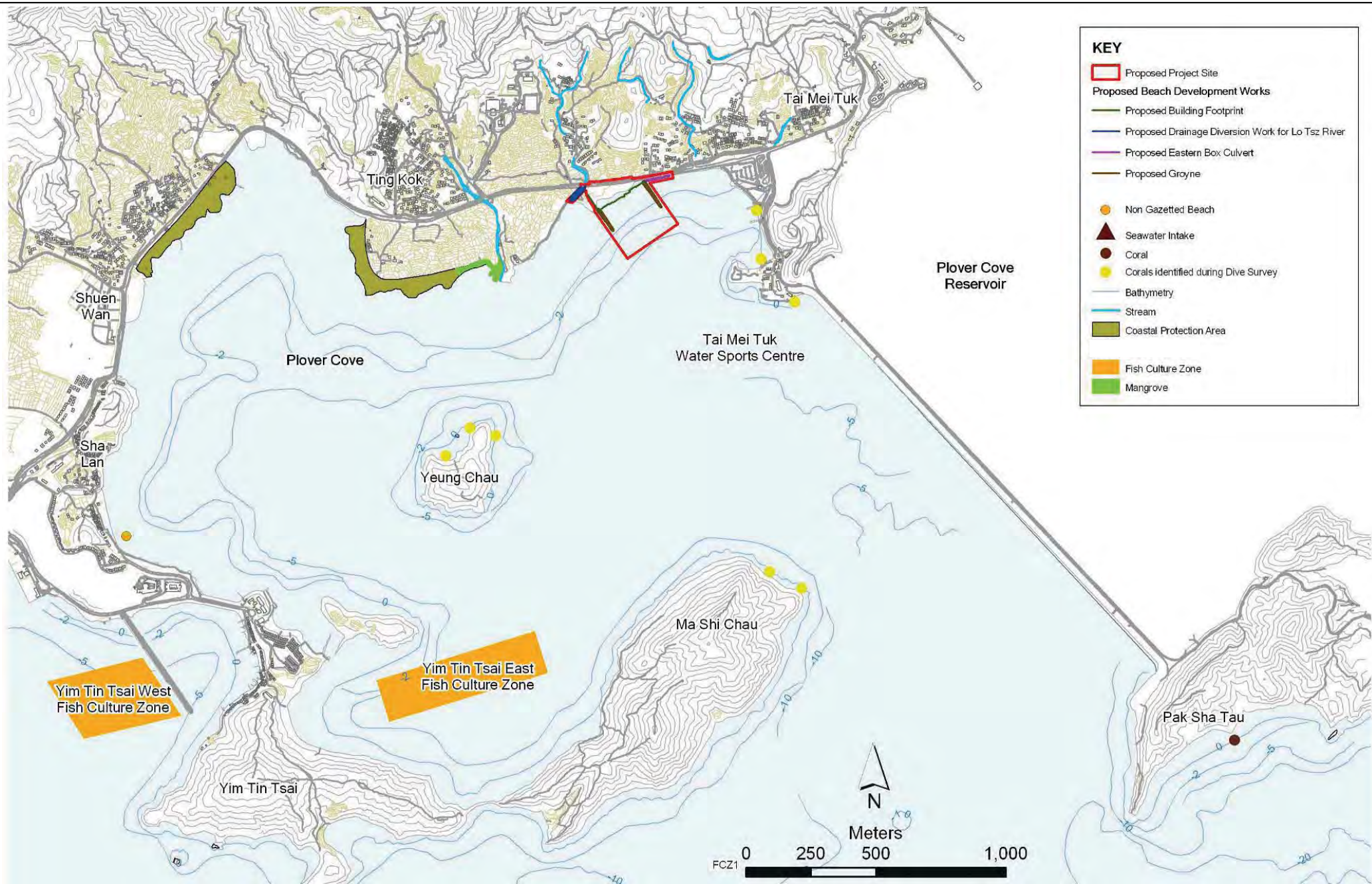
12.2 RECOMMENDATIONS

- 12.2.1 The remaining activities in **June 2021** are E&M Works (installation of CCTV, Public announcement, fan, lighting system etc. at two lookout towers) and landscaping. The potential environmental impacts associated with the remaining works for Project are considered negligible. However, the Contractor should provide dust and noise mitigation measures as applicable, in accordance with the EM&A requirement during the remaining construction phase.

Appendix A

Layout plan of the Project

(The content of Appendix A is modified from the previous EM&A Manual - Development of a Bathing Beach at Lung Mei, Tai Po (Register No. AEIAR-123/2008): Environmental Monitoring and Audit (EM&A) Manual (November 2007))



Client



CIVIL ENGINEERING AND DEVELOPMENT DEPARTMENT

Main Contractor



偉金建築有限公司
Welcome Construction Co., Ltd.

Agreement No.: CE 59/2005(EP)

Project Title:
DEVELOPMENT OF A BATHING BEACH AT LUNG MEI, TAI PO

ENVIRONMENTAL MONITORING AND AUDIT MANUAL

Figure Title:
PROJECT LOCATION AND ENVIRONMENTAL SENSITIVE RECEIVERS

FIGURE 1.1

Checked	TF	Scale	AS SHOWN	Rev.	1
Designed	-	Drawn	AM	Date	13/03/2007

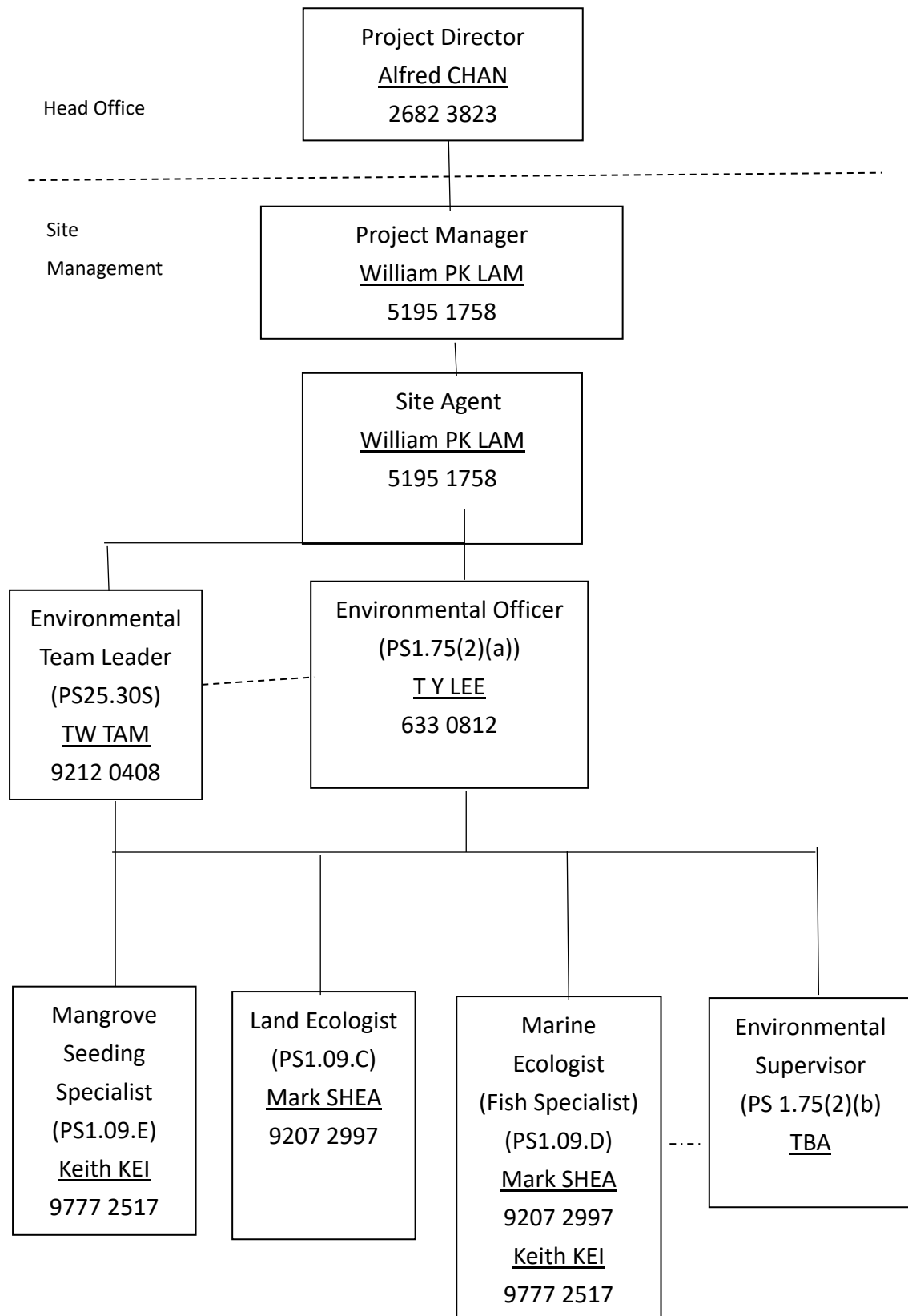
Appendix B

Organization Structure and Contact Details

Welcome Construction Co. Ltd.

Contract No. CV/2012/05 Bathing Beach at Lung Mei, Tai Po

Project Organization Chart for Environmental Management



Contact Details of Key Personnel – CV/2012/05

Organization	Project Role	Name of Key Staff	Tel No.	Fax No.
CEDD	Engineer's Representative	Mr. K F Chan	2762 5532	2714 2054
ERM	Independent Environmental Checker	Mr. Terence Fong	2271 3156	2723 5660
Welcome	Project Manager	Mr. William Lam	5195 1758	2682 3222
Welcome	Site Agent	Mr. William Lam	5195 1758	2682 3222
Welcome	Environmental Officer	Mr. T Y Lee	6373 0812	2682 3222
Welcome	Environmental Supervisor	Mr. K K Lau	6055 9878	2682 3222
AUES	Environmental Team Leader	T. W. Tam	2959 6059	2959 6079
AUES	Environmental Consultant	Nicola Hon	2959 6059	2959 6079
AUES	Environmental Consultant	Ben Tam	2959 6059	2959 6079

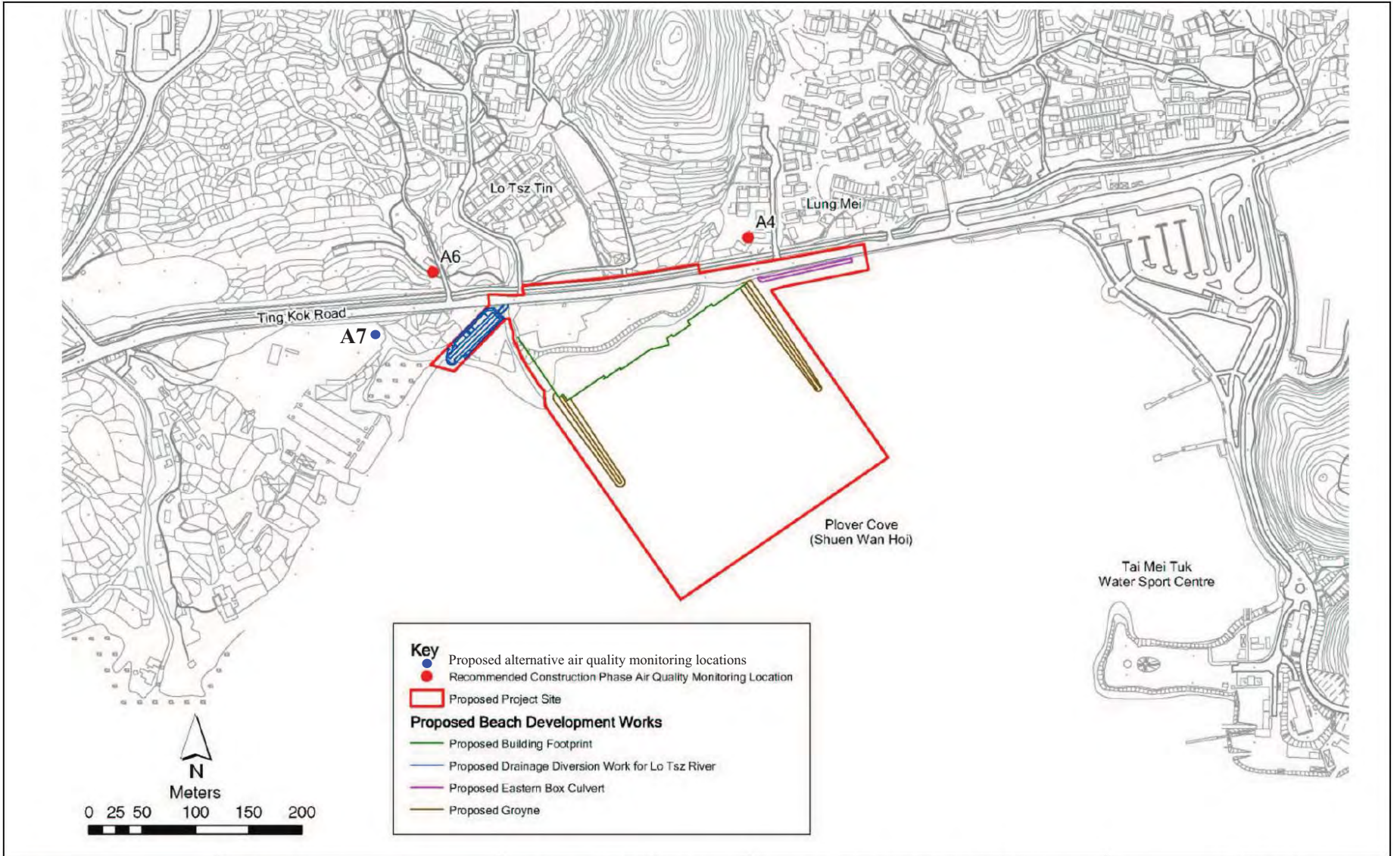
Legend:



CEDD (Engineer) – Civil Engineering and Development Department
Welcome (Main Contractor) – Welcome Construction Company Limited
ERM (IEC) – Environmental Resources Management
AUES (ET) – Action-United Environmental Services & Consulting

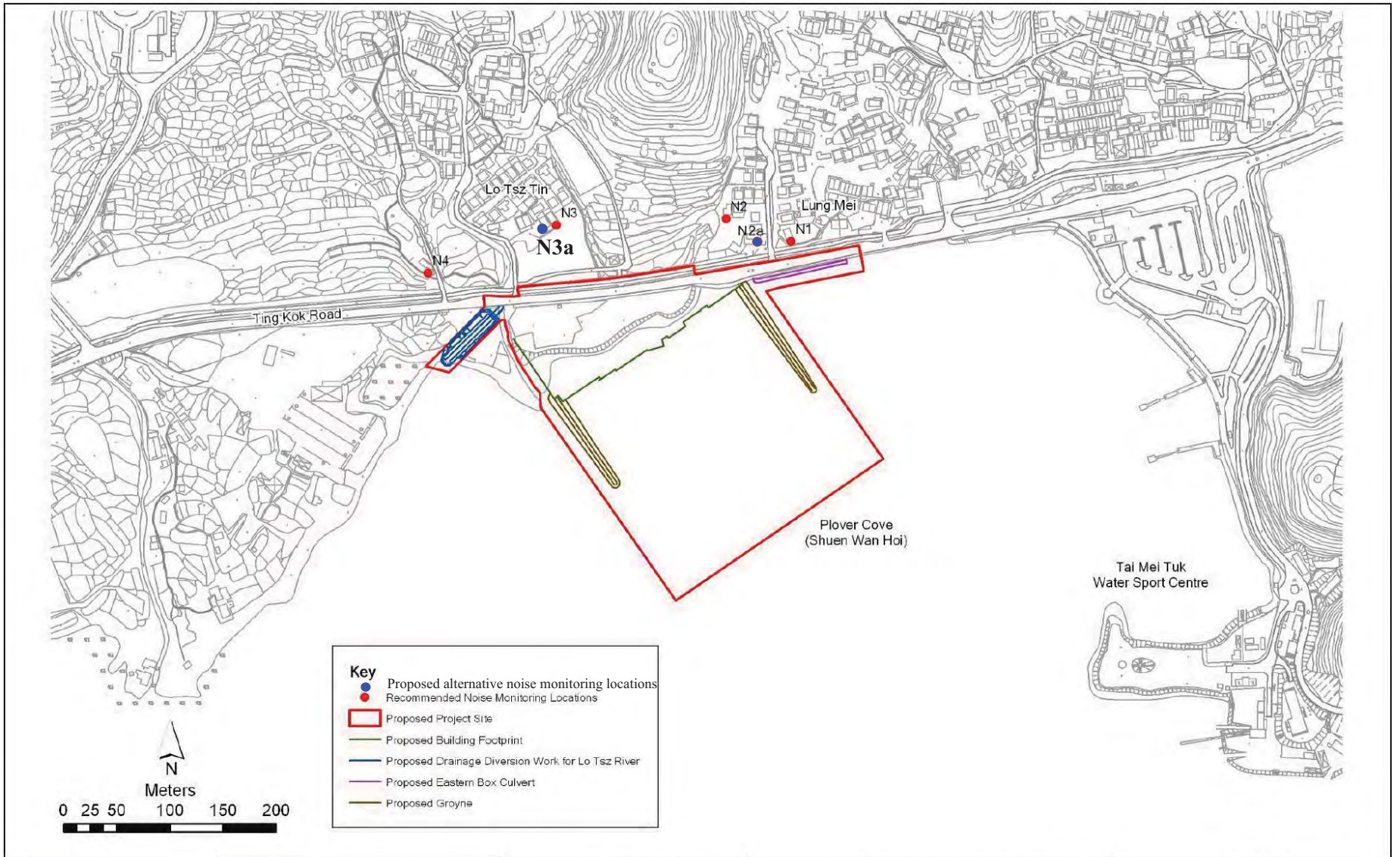
Appendix C



Monitoring Location

(The Figures of Appendix D are modified from the previous EM&A Manual - Development of a Bathing Beach at Lung Mei, Tai Po (Register No. AEIAR-123/2008): Environmental Monitoring and Audit (EM&A) Manual (November 2007))



Client  CIVIL ENGINEERING AND DEVELOPMENT DEPARTMENT	Main Contractor  偉全建築有限公司 Welcome Construction Co., Ltd.	Agreement No.: CE 59/2005(EP)	ENVIRONMENTAL MONITORING AND AUDIT MANUAL	FIGURE 3.1		
		Project Title: DEVELOPMENT OF A BATHING BEACH AT LUNG MEI, TAI PO	Figure Title: CONSTRUCTION PHASE AIR QUALITY MONITORING LOCATIONS	Checked: TF	Scale: AS SHOWN	Rev.: 2
				Designed: -	Drawn: KK	Date: 23/03/2007



Client  CIVIL ENGINEERING AND DEVELOPMENT DEPARTMENT	 偉全建築有限公司 Welcome Construction Co., Ltd.	Agreement No.: CE 59/2005(EP)	ENVIRONMENTAL MONITORING AND AUDIT MANUAL	FIGURE 4.1		
		Project Title: DEVELOPMENT OF A BATHING BEACH AT LUNG MEI, TAI PO	Figure Title: CONSTRUCTION PHASE NOISE MONITORING LOCATIONS	Checked: TF	Scale: AS SHOWN	Rev.: 2
				Designed: -	Drawn: KK	Date: 29/08/2007

Photograph Records for Air Quality Monitoring

Air Quality Monitoring (24-Hour TSP & 1-Hour TSP)



A4



A7

Photograph Records for Noise Monitoring

Noise Monitoring



N1



N2a

Noise Monitoring



N3a



N4

Appendix D

Event and Action Plan

Event and Action Plan for Air Quality

EVENT	ACTION			
	ET	IEC	ER	Contractor
Action Level Exceedance for One Sample	<ol style="list-style-type: none"> Identify source(s) of impact; Inform the IEC and the ER; Repeat measurement to confirm findings; Carry out investigation for the cause of exceedance, if the exceedance is project-related, increase monitoring frequency to daily 	<ol style="list-style-type: none"> Check monitoring data submitted by ET; Check Contractor’s working method 	<ol style="list-style-type: none"> Notify Contractor 	<ol style="list-style-type: none"> Rectify any unacceptable practice; Amend working methods if appropriate
Action Level Exceedance for Two or More Consecutive Samples	<ol style="list-style-type: none"> Identify source(s) of impact; Inform the IEC and ER; Repeat measurement to confirm findings; Carry out investigation for the cause of exceedance, if the exceedance is project-related, increase monitoring frequency to daily Discuss with IEC and Contractor on remedial action required; If exceedance continues, arrange meeting with IEC and ER; If exceedance stops, cease additional monitoring 	<ol style="list-style-type: none"> Check monitoring data submitted by ET; Check Contractor’s working method; Discuss with ET and Contractor on possible remedial measures; Advise the ER on the effectiveness of the proposed remedial measures; Supervise implementation of remedial measures 	<ol style="list-style-type: none"> Confirm receipt of notification of failure in writing; Notify Contractor; Ensure remedial measures properly implemented 	<ol style="list-style-type: none"> Submit proposals for remedial actions to IEC within 3 working days of notification; Implement the agreed proposals; Amend proposal if appropriate
Limit Level Exceedance for One Sample	<ol style="list-style-type: none"> Identify source(s) of impact; Inform the EPD and the ER; Repeat measurement to confirm findings; Carry out investigation for the cause of exceedance, if the exceedance is project-related, increase monitoring frequency to daily 	<ol style="list-style-type: none"> Check monitoring data submitted by ET; Check Contractor’s working method; Discuss with ET and Contractor on possible remedial measures; Advise the ER on the effectiveness of the proposed 	<ol style="list-style-type: none"> Confirm receipt of notification of failure in writing; Notify Contractor; Ensure remedial measures properly implemented 	<ol style="list-style-type: none"> Take immediate action to avoid further exceedance; Submit proposals for remedial actions to IEC within 3 working days of notification; Implement the agreed proposals; Amend proposal if

EVENT	ACTION			
	ET	IEC	ER	Contractor
	5. Assess effectiveness of Contractor's remedial actions and keep IEC, EPD and ER informed of results	remedial measures; 5. Supervise implementation of remedial measures		appropriate
Limit Level Exceedance for Two or More Consecutive Samples	1. Notify IEC, ER, Contractor and EPD; 2. Identify source(s) of impact; 3. Repeat measurement to confirm findings; 4. Carry out investigation for the cause of exceedance, if the exceedance is project-related, increase monitoring frequency to daily 5. Carry out analysis of Contractor's working procedures to determine possible mitigation to be implemented; 6. Arrange meeting with IEC and ER to discuss the remedial actions to be taken; 7. Assess effectiveness of Contractor's remedial action and keep IEC, EPD and ER informed of the result; 8. If exceedance stop, cease additional monitoring	1. Discuss amongst ER, ET and Contractor on the potential remedial actions; 2. Review Contractor's remedial actions whenever necessary to assure their effectiveness and advise the ER accordingly; 3. Supervise the implementation of remedial measures	1. Confirm receipt of notification of failure in writing; 2. Notify Contractor; 3. In consultation with the IEC, agree with the Contractor on the remedial measures to be implemented; 4. Ensure remedial measures properly implemented; 5. If exceedance continues, consider what portion of the work is responsible and instruct the Contractor to stop that portion of work until the exceedance is abated	1. Take immediate action to avoid further exceedance; 2. Submit proposals for remedial actions to IEC within 3 working days of notification; 3. Implement the agreed proposals 4. Resubmit proposals if problem still not under control; 5. Stop the relevant portion of works as determined by the ER until the exceedance is abated

Event and Action Plan for Construction Noise

EXCEEDANCE	ACTION			
	ET	IEC	ER	Contractor
Action Level	<ol style="list-style-type: none"> 1. Notify IEC and Contractor; 2. Carry out investigation; 3. Report the results of investigation to the IEC and Contractor; 4. Discuss with the Contractor and formulate remedial measures; 5. Increase monitoring frequency to check mitigation effectiveness 	<ol style="list-style-type: none"> 1. Review the analysed results submitted by the ET; 2. Review the proposed remedial measures by the Contractor and advise the ER accordingly; 3. Supervise the implementation of remedial measures 	<ol style="list-style-type: none"> 1. Confirm receipt of notification of failure in writing; 2. Notify Contractor; 3. Require Contractor to propose remedial measures for the analysed noise problem; 4. Ensure remedial measures are properly implemented 	<ol style="list-style-type: none"> 1. Submit noise mitigation proposals to IEC; 2. Implement noise mitigation proposals
Limit Level	<ol style="list-style-type: none"> 1. Notify IEC, ER, EPD and Contractor; 2. Identify source; 3. Carry out investigation; 4. Report the results of investigation to the IEC and Contractor; 5. Discuss with the Contractor and formulate remedial measures; 6. Increase monitoring frequency to check mitigation effectiveness 	<ol style="list-style-type: none"> 1. Review the analysed results submitted by the ET; 2. Review the proposed remedial measures by the Contractor and advise the ER accordingly; 3. Supervise the implementation of remedial measures 	<ol style="list-style-type: none"> 1. Confirm receipt of notification of failure in writing; 2. Notify Contractor; 3. Require Contractor to propose remedial measures for the analysed noise problem; 4. Ensure remedial measures are properly implemented 	<ol style="list-style-type: none"> 1. Submit noise mitigation proposals to IEC; 2. Implement noise mitigation proposals

Appendix E

Database of Monitoring Results

24-hour TSP Monitoring Data

DATE	SAMPLE NUMBER	ELAPSED TIME			CHART READING			AVG TEMP (°C)	AVG AIR PRESS (hPa)	STANDARD FLOW RATE (m ³ /min)	AIR VOLUME (std m ³)	FILTER WEIGHT (g)		DUST WEIGHT COLLECTED (g)	24-Hr TSP (µg/m ³)	ACTION LEVEL (µg/m ³)	LIMIT LEVEL (µg/m ³)
		INITIAL	FINAL	(min)	MIN	MAX	AVG					INITIAL	FINAL				
A4 - No. 101 Lung Mei Tsuen																	
1-Mar-21	26872	17078.72	17102.72	1440.00	40	40	40.0	21.9	1016.2	1.31	1891	2.8220	2.8871	0.0651	34	142	260
6-Mar-21	26902	17102.72	17126.72	1440.00	40	40	40.0	20.5	1016.3	1.32	1895	2.6631	2.7686	0.1055	56	142	260
12-Mar-21	25214	17126.72	17150.72	1440.00	41	41	41.0	23.2	1018.4	1.34	1932	2.8072	2.8603	0.0531	27	142	260
18-Mar-21	26982	17150.72	17174.72	1440.00	40	40	40.0	23.4	1013.2	1.31	1884	2.6558	2.6784	0.0226	12	142	260
24-Mar-21	26536	17174.72	17198.72	1440.00	40	40	40.0	24.1	1015.2	1.31	1884	2.6776	2.7128	0.0352	19	142	260
30-Mar-21	Power failure															142	260
1-Apr-21	Power failure															142	260
7-Apr-21	Power failure															142	260
13-Apr-21	Power failure															142	260
19-Apr-21	Power failure															142	260
24-Apr-21	Power failure															142	260
29-Apr-21	Power failure															142	260
5-May-21	Power failure															142	260
11-May-21	Power failure															142	260
17-May-21	Power failure															142	260
A7 - Hong Kong Eco-Farm																	
1-Mar-21	26871	17121.64	17145.64	1440.00	30	31	30.5	21.9	1016.2	1.00	1446	2.8126	2.9373	0.1247	86	141	260
6-Mar-21	26903	17145.64	17169.64	1440.00	30	31	30.5	20.1	1016.3	1.01	1450	2.6607	2.7180	0.0573	40	141	260
12-Mar-21	26711	17169.64	17193.64	1440.00	30	31	30.5	23.2	1018.4	1.00	1445	2.7716	2.8568	0.0852	59	141	260
18-Mar-21	26766	17193.64	17217.64	1440.00	30	31	30.5	23.4	1013.2	1.00	1442	2.7590	2.8315	0.0725	50	141	260
24-Mar-21	26928	17217.64	17241.64	1440.00	31	31	31.0	24.1	1015.2	1.01	1462	2.6456	2.6741	0.0285	20	141	260
30-Mar-21	Power failure															141	260
1-Apr-21	Power failure															141	260
9-Apr-21 (*)	26958	17270.64	17294.64	1440.00	42	42	42.0	26.7	1007.6	1.32	1901	2.6521	2.7570	0.1049	55	141	260
13-Apr-21	27030	17294.64	17318.64	1440.00	42	42	42.0	25.9	1013.6	1.32	1907	2.8259	2.8900	0.0641	34	141	260
19-Apr-21	26786	17318.64	17342.64	1440.00	42	42	42.0	22.5	1013.2	1.33	1916	2.7780	2.8086	0.0306	16	141	260
24-Apr-21	27034	17342.64	17366.64	1440.00	42	42	42.0	25.4	1010.9	1.32	1907	2.7811	3.0421	0.2610	137	141	260
29-Apr-21	26998	17366.64	17390.64	1440.00	42	42	42.0	23.2	1014.5	1.33	1915	2.8055	2.8600	0.0545	28	141	260
5-May-21	Power failure															141	260
11-May-21	Power failure															141	260
17-May-21	Power failure															141	260

Remark (#) power failure for HVS; (*) make up sampling for 7 Apr 2021.

1-hour TSP Monitoring Data

Date	Start Time	1 st reading	2 nd reading	3 rd reading	Action Level ($\mu\text{g}/\text{m}^3$)	Limit Level ($\mu\text{g}/\text{m}^3$)
A4 - No. 101 Lung Mei Tsuen						
3-Mar-21	9:27	12:27	73	67	275	500
9-Mar-21	13:01	16:01	89	93	275	500
15-Mar-21	9:10	12:10	74	71	275	500
20-Mar-21	9:33	12:33	80	83	275	500
26-Mar-21	13:50	16:50	78	75	275	500
1-Apr-21	9:25	12:25	61	68	275	500
7-Apr-21	9:14	12:14	70	72	275	500
9-Apr-21	14:08	17:08	65	64	275	500
14-Apr-21	13:13	16:13	70	65	275	500
20-Apr-21	9:31	12:31	72	65	275	500
26-Apr-21	9:16	12:16	61	54	275	500
30-Apr-21	13:21	16:21	80	75	275	500
6-May-21	9:17	12:17	65	72	275	500
12-May-21	9:15	12:15	63	68	275	500
A7 - Hong Kong Eco-Farm						
3-Mar-21	12:45	15:45	69	66	274	500
9-Mar-21	13:05	16:05	93	87	274	500
15-Mar-21	9:15	12:15	72	76	274	500
20-Mar-21	9:42	12:45	65	69	274	500
26-Mar-21	9:21	12:21	76	79	274	500
1-Apr-21	9:18	12:18	65	70	274	500
7-Apr-21	9:07	12:07	68	70	274	500
9-Apr-21	14:30	17:30	74	71	274	500
14-Apr-21	13:25	16:25	69	67	274	500
20-Apr-21	9:25	12:25	75	80	274	500
26-Apr-21	9:10	12:10	66	68	274	500
30-Apr-21	13:30	16:30	85	70	274	500
6-May-21	9:21	12:21	65	69	274	500
12-May-21	9:19	12:19	70	65	274	500

Construction Noise Monitoring Results, dB(A)

Date	Start Time	1 st Leq _{5min}	L10	L90	2 nd Leq _{5min}	L10	L90	3 rd Leq _{5min}	L10	L90	4 th Leq _{5min}	L10	L90	5 th Leq _{5min}	L10	L90	6 th Leq _{5min}	L10	L90	Leq ₃₀	façade correction	Limit Level (dB(A))
N1 - Village house - No. 165A Lung Mei																						
3-Mar-21	9:30	60.4	64.6	50.2	55.5	59.3	47.1	55.1	58.0	49.1	55.5	58.9	48.8	57.6	60.6	51.1	53.6	56.1	44.2	57	60	75
9-Mar-21	13:01	61.1	63.6	56.8	64.5	65.0	58.1	60.2	62.6	56.3	64.4	67.9	56.5	58.6	60.0	55.0	58.4	61.8	53.4	62	65	75
15-Mar-21	13:08	71.3	76.2	56.9	72.6	73.2	57.6	74.2	75.3	60.1	74.0	73.8	70.6	58.6	61.0	50.6	56.3	59.6	52.2	71	74	75
26-Mar-21	9:01	61.6	63.0	59.5	62.3	64.5	59.5	62.1	63.5	59.5	65.0	68.0	60.0	66.8	70.5	56.5	57.7	59.0	55.5	63	66	75
1-Apr-21	9:25	62.1	63.2	60.4	64.3	65.7	62.4	62.6	62.9	60.2	62.4	64.1	60.3	61.5	63	60.1	62.9	64.4	60.8	63	66	75
7-Apr-21	14:08	54.4	58.8	47.4	51.9	55.9	45.5	56.6	62.3	44.8	61.6	64.3	44.3	53.5	56.7	45.9	55.3	60.1	44.2	57	60	75
14-Apr-21	13:10	56.6	60.5	48.5	50.9	55.4	43.1	60.6	65.4	46.2	51.1	55.3	42.4	54.6	59.2	41.9	54.8	58.9	47.3	56	59	75
20-Apr-21	9:40	61.9	63.6	56.8	65.5	66.0	58.1	61.2	62.6	56.3	65.4	67.9	56.0	59.6	61.0	54.0	57.9	61.4	53.4	63	66	75
26-Apr-21	9:00	60.6	62.0	53.5	63.0	63.0	53.0	57.4	57.0	53.0	55.7	58.0	53.0	54.5	55.5	53.0	54.7	57.0	52.5	59	62	75
6-May-21	9:11	58.6	61.0	50.6	57.5	59.2	50.1	55.5	58.5	47.6	56.9	59.1	48.7	60.1	62.3	51.4	58.9	61.4	52.5	58	61	75
12-May-21	9:08	57.7	60.9	49.7	55.1	56.9	48.0	53.5	55.8	47.5	56.5	57.5	50.2	55.1	56.8	47.5	54.7	55.0	47.9	56	59	75
N2a - Village house - No. 101 Lung Mei																						
3-Mar-21	10:02	61.5	65.7	52.7	60.5	63.1	55.8	68.7	72.6	58.7	64.0	65.7	61.6	64.1	65.3	62.3	65.5	70.2	61.7	65	N/A	75
9-Mar-21	13:35	56.7	61.1	47.3	61.8	65.9	43.8	65.1	67.6	57.4	66.6	68.9	60.4	65.4	69.5	52.0	65.2	67.9	55.0	64	N/A	75
15-Mar-21	13:40	73.1	75.9	61.3	75.0	76.3	72.4	74.8	77.3	66.1	73.7	76.9	59.9	70.6	46.5	54.5	75.5	78.7	58.3	74	N/A	75
26-Mar-21	9:34	64.8	69.5	50.0	67.1	71.5	49.0	67.1	71.5	48.5	48.7	50.0	47.0	49.1	50.0	48.0	55.2	59.5	47.5	64	N/A	75
1-Apr-21	10:05	62.6	62.9	60.3	62.9	63.6	60.5	65.9	67	61.1	65.5	67	61.9	64.7	66.8	63.6	64.8	66.7	61	65	N/A	75
7-Apr-21	14:38	56.4	60.3	47.8	58.6	63.0	46.3	51.9	55.0	45.8	58.5	62.9	47.6	56.5	61.2	46.6	56.7	59.3	51.8	57	N/A	75
14-Apr-21	13:40	53.7	56.6	42.4	55.1	59.5	45.0	55.0	59.1	44.5	59.2	61.9	45.8	58.0	61.9	46.7	54.4	59.1	41.2	56	N/A	75
20-Apr-21	10:16	63.5	65.8	61.5	64.6	66.7	62	65.2	66.8	62.4	64.6	66.1	62.5	65.5	67.8	62.6	66.2	68	62.5	65	N/A	75
26-Apr-21	9:31	65.6	66.0	58.0	59.8	62.0	56.0	59.0	562.0	52.0	65.2	66.5	59.5	62.0	65.0	55.5	65.1	67.5	59.5	64	N/A	75
6-May-21	9:43	61.4	65.3	52.8	63.6	68.0	51.3	56.9	60.0	50.8	63.5	67.9	52.6	61.5	66.2	51.6	61.7	64.3	56.8	62	N/A	75
12-May-21	9:41	64.3	64.8	42.5	63.5	65.9	44.1	56.8	56.9	49.9	53.1	58.3	50.9	53.1	55.0	49.0	58.4	60.0	54.2	60	N/A	75
N3a - Village house - No. 66C Lo Tsz Tin																						
3-Mar-21	10:45	52.0	54.4	44.9	57.9	54.4	45.6	63.5	67.9	47.1	53.2	53.3	44.0	47.8	49.7	44.8	52.2	55.1	46.2	58	61	75
9-Mar-21	14:09	61.8	65.5	52.5	63.4	67.0	52.5	62.7	66.0	52.5	59.9	64.5	59.5	60.7	64.5	51.0	57.1	61.0	50.0	61	64	75
15-Mar-21	14:20	58.9	63.5	49.9	59.2	63.1	50.8	58.2	62.4	50.1	58.0	61.7	48.8	64.5	62.8	48.4	54.1	57.5	48.7	60	63	75
26-Mar-21	10:15	63.3	64.0	62.0	61.5	62.5	55.5	56.4	58.5	54.0	58.5	60.0	56.0	61.4	64.0	57.0	64.0	68.0	59.0	62	65	75
1-Apr-21	10:45	63.3	65	60	65.5	68.5	63.2	64.4	66.4	62	65.3	68.5	62	62.3	64.5	59.5	62.4	65.1	59	64	67	75
7-Apr-21	15:20	53.6	52.4	47.0	48.2	49.6	44.2	47.7	50.1	43.8	49.5	52.2	46.3	50.5	54.3	43.1	49.8	53.6	42.1	50	53	75
14-Apr-21	14:21	46.8	49.3	43.0	50.7	53.4	45.8	49.0	52.4	45.4	45.6	47.4	43.6	46.9	49.4	43.8	46.8	49.7	43.3	48	51	75
20-Apr-21	10:50	64.2	67	58.6	65	68.1	59.5	63.7	66.6	58.3	63.1	66.5	55.9	64.5	67.7	58.7	65.8	67.3	59.4	64	67	75

Date	Start Time	1 st Leq _{5min}	L10	L90	2 nd Leq _{5min}	L10	L90	3 rd Leq _{5min}	L10	L90	4 th Leq _{5min}	L10	L90	5 th Leq _{5min}	L10	L90	6 th Leq _{5min}	L10	L90	Leq ₃₀	façade correction	Limit Level (dB(A))
26-Apr-21	10:17	56.5	58.5	51.5	55.2	57.0	51.0	57.7	59.0	50.0	56.3	56.5	50.5	57.4	64.5	57.5	60.5	58.5	52.0	58	61	75
6-May-21	10:18	56.6	58.4	50.0	51.5	52.6	47.2	50.6	53.1	46.8	52.5	55.2	49.3	53.5	57.3	46.1	53.8	56.6	45.1	54	57	75
12-May-21	10:15	55.2	57.5	48.6	55.0	58.1	49.5	53.7	56.6	48.3	53.1	56.5	45.9	54.5	57.7	48.7	55.8	57.3	49.4	55	58	75
N4 - Village house - No. 79 Lo Tsz Tin																						
3-Mar-21	15:15	58.5	60.0	45.2	54.3	58.6	46.1	57.4	60.8	49.8	56.4	59.7	52.8	59.0	60.9	54.7	60.3	63.8	53.1	58	N/A	75
9-Mar-21	14:41	63.7	66.5	51.4	59.0	64.0	48.2	61.1	65.5	48.2	64.4	66.2	46.8	57.1	60.9	44.1	53.0	56.3	45.2	61	N/A	75
15-Mar-21	15:00	60.4	63.5	56.0	64.5	67.9	54.8	64.0	64.5	56.4	61.5	64.3	55.2	65.4	66.8	56.2	70.2	66.9	55.8	66	N/A	75
26-Mar-21	10:57	59.8	64.5	48.5	57.0	60.0	49.0	57.0	62.0	48.5	53.2	56.5	48.0	55.4	55.5	57.5	51.1	52.5	48.5	56	N/A	75
1-Apr-21	11:25	56.8	61.5	45.5	54.0	57.0	46.0	54.0	59.0	45.5	50.2	53.5	45.0	52.4	52.5	54.5	48.1	49.5	45.5	53	N/A	75
7-Apr-21	16:07	57.7	61.4	46.4	57.1	61.5	46.2	58.3	61.8	45.2	58.1	61.7	48.6	58.2	61.8	48.1	58.9	63.9	42.2	58	N/A	75
14-Apr-21	15:00	58.8	61.9	48.4	58.9	62.4	49.5	59.5	62.4	50.6	58.7	61.5	49.8	57.2	60.8	50.0	58.8	62.2	52.9	59	N/A	75
20-Apr-21	11:26	60.5	62.3	55.5	58.9	61.5	54.5	53.3	60.5	50.9	61.9	63.0	59.5	59.3	62.0	56.8	60.1	62.5	59.5	60	N/A	75
26-Apr-21	10:54	60.1	61.5	54.5	59.3	59.5	55.5	59.3	61.0	54.0	56.9	59.0	54.0	57.1	58.5	55.0	52.9	65.5	58.5	58	N/A	75
6-May-21	10:51	58.8	60.1	53.8	57.0	59.5	53.0	58.2	60.2	53.4	56.6	59.0	52.8	59.2	61.0	54.6	57.5	60.1	52.1	58	N/A	75
12-May-21	11:49	62.1	63.5	56.5	61.3	62.5	62.5	61.3	63.0	56.0	58.9	61.0	56.0	59.1	60.5	57.0	54.9	60.5	50.4	60	N/A	75

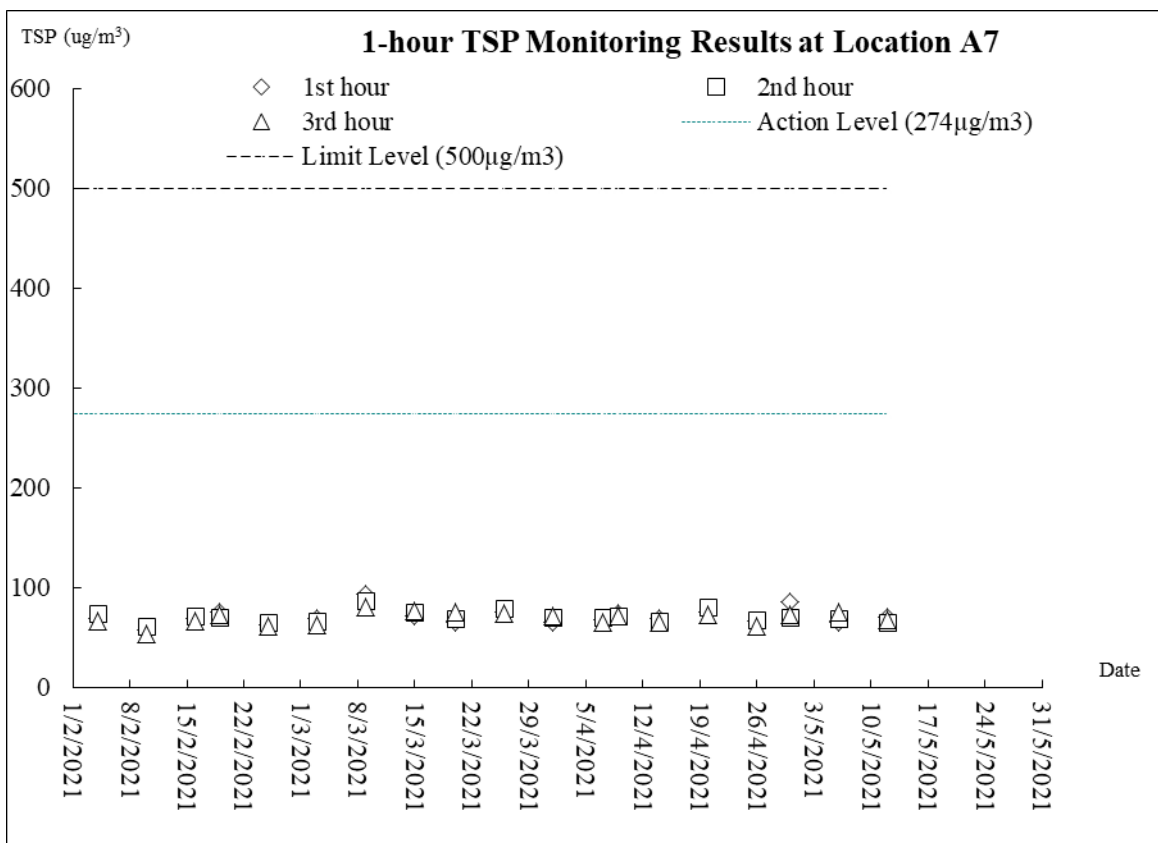
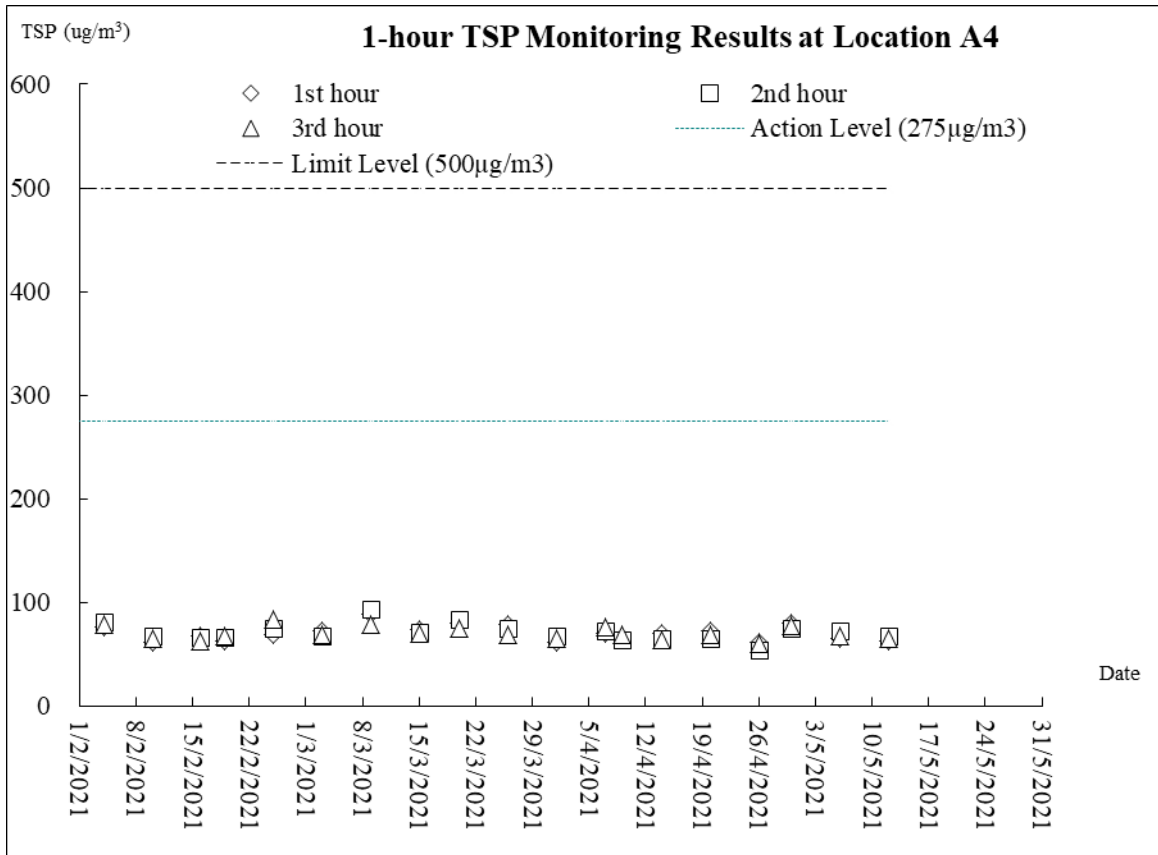
Remark:

Sound level meter set at N1 and N3a are made free-field measurement, façade correction (+3dB(A)) has added according to acoustical principles and EPD guidelines;

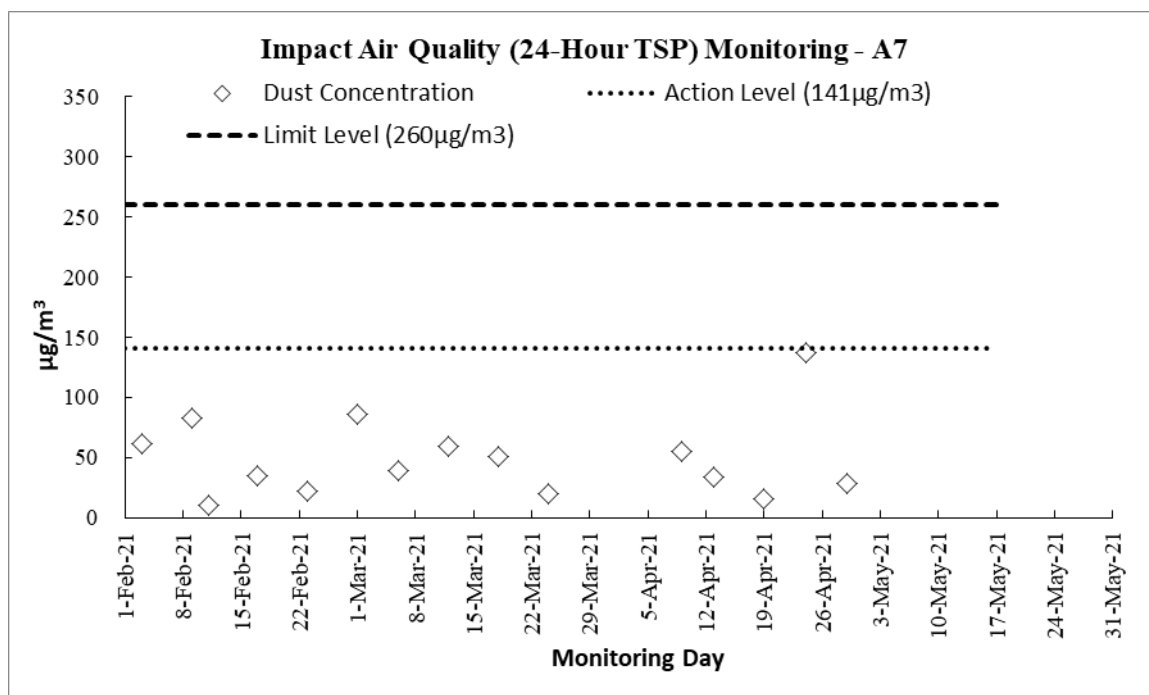
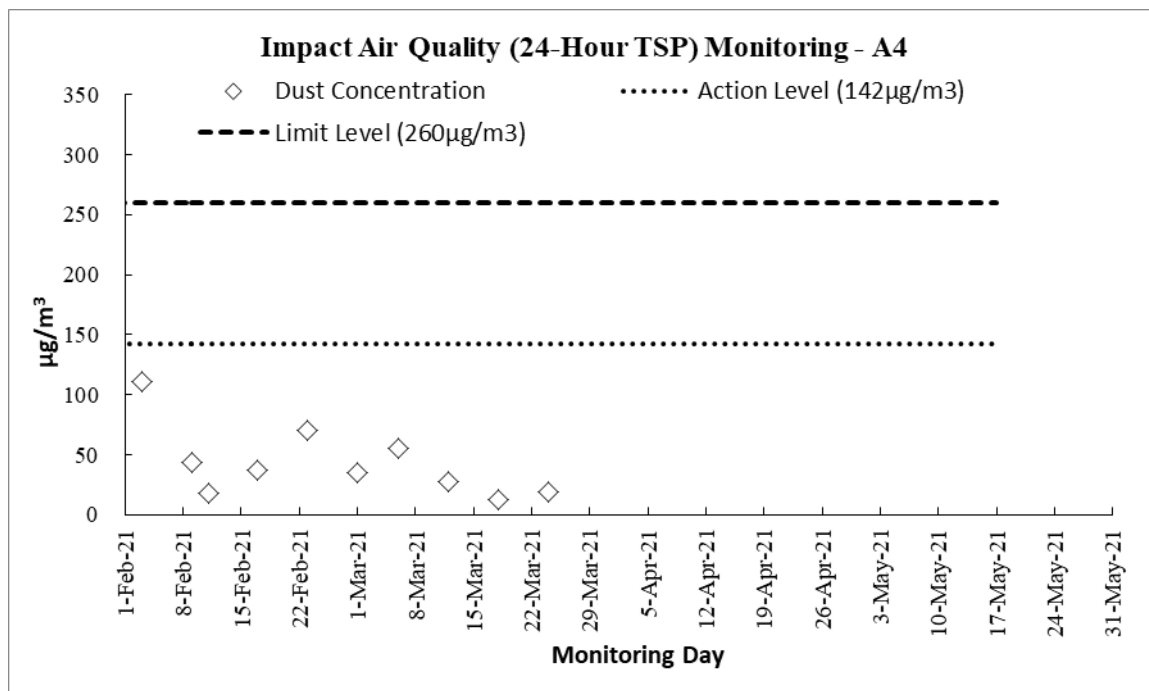
Appendix F

Graphical Plots for Monitoring Results

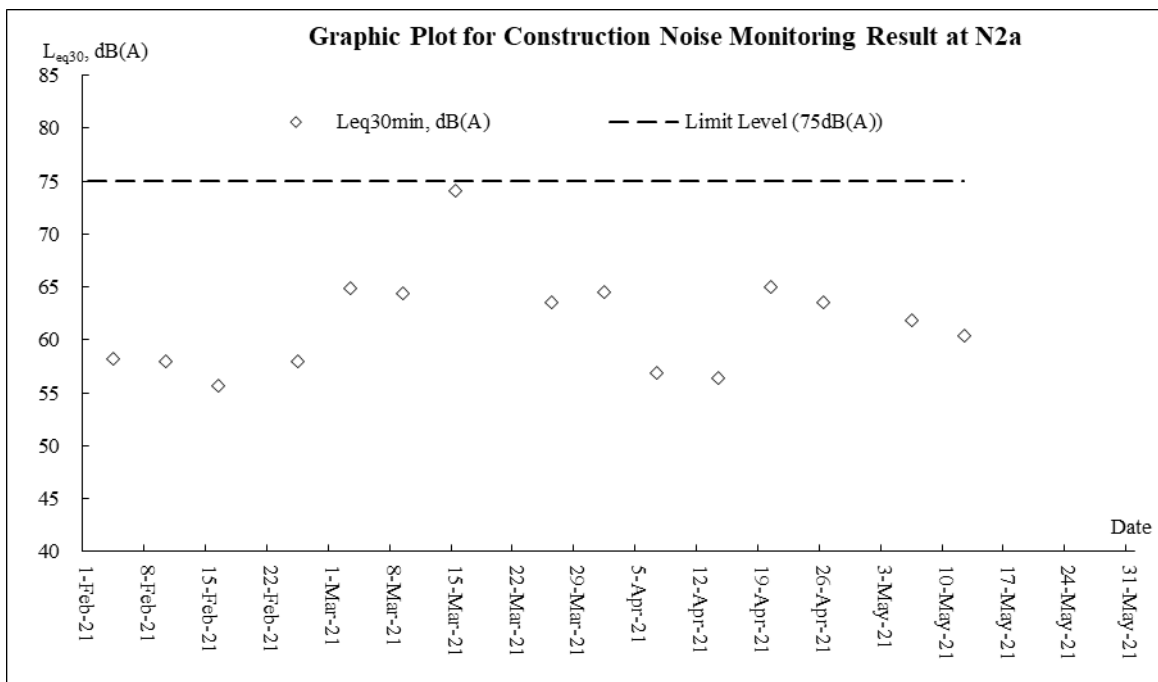
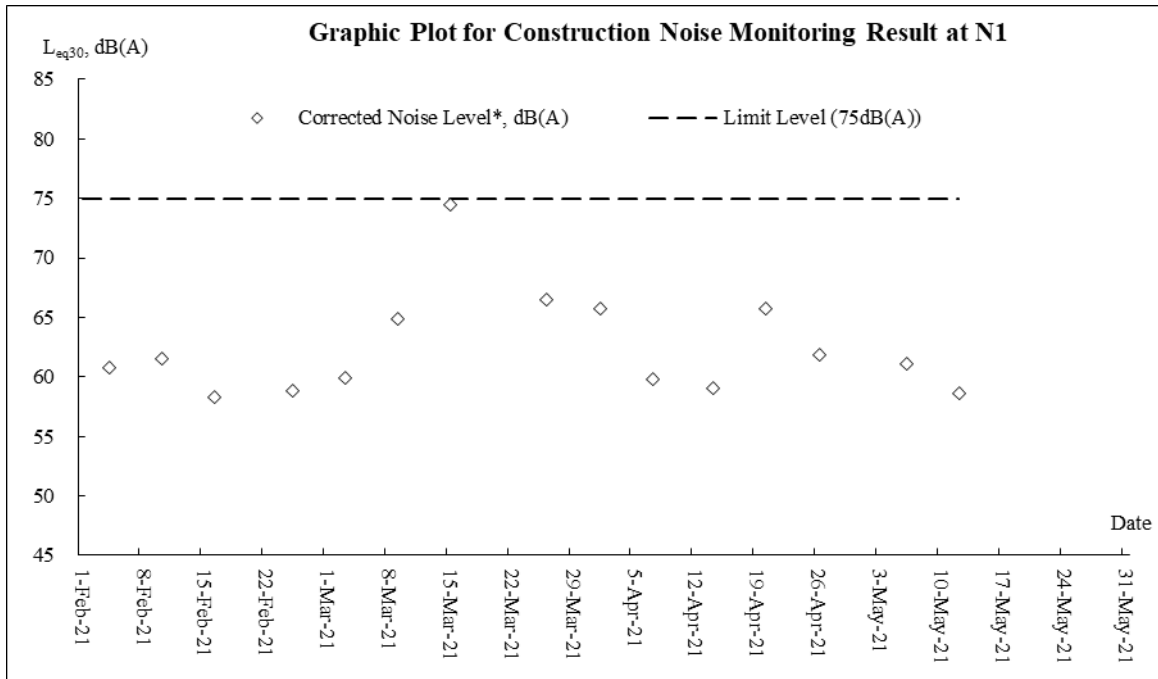
Air Quality – 1-hour TSP

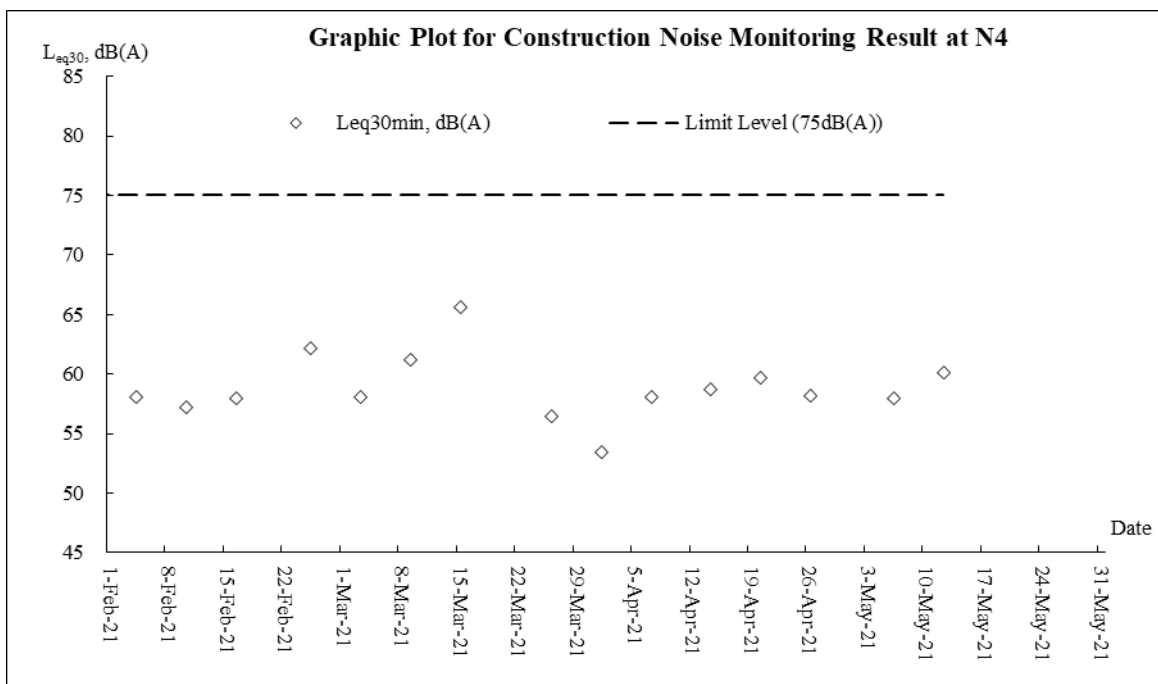
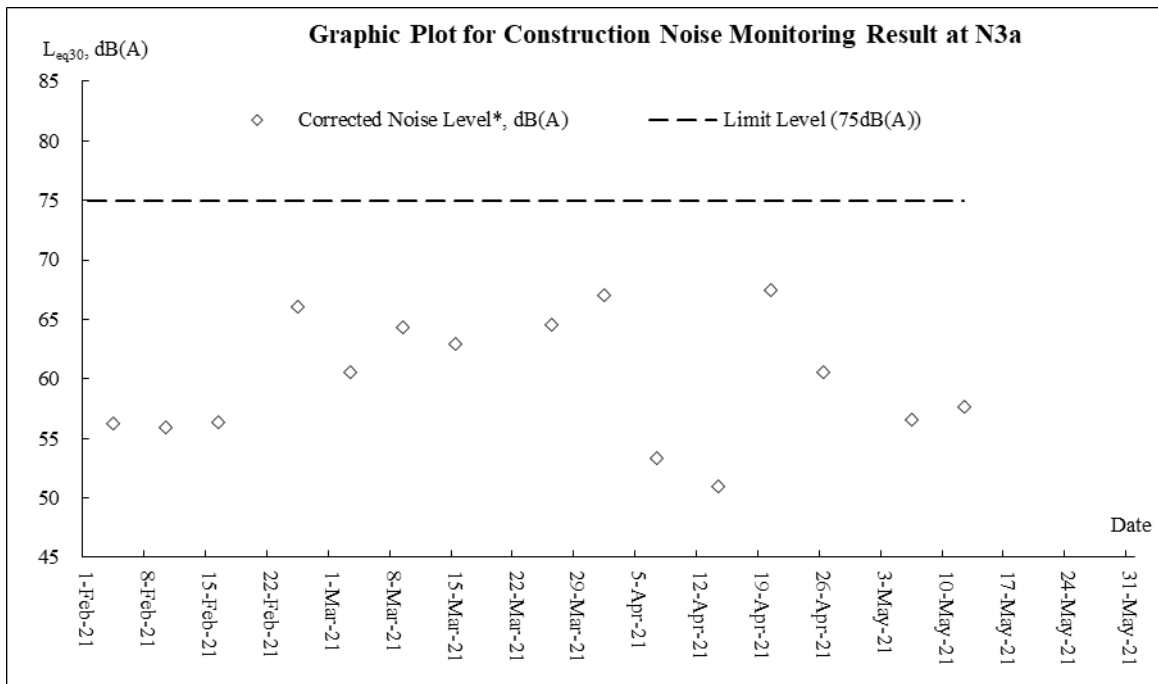


Air Quality – 24-hour TSP



Construction Noise





Appendix G
Weather Information

Weather Condition – March 2021

With relatively less cold air outbreaks from the north, March 2021 continued to be exceptionally warm in Hong Kong. The monthly mean maximum temperature of 24.8 degrees, monthly mean temperature of 22.0 degrees and monthly mean minimum temperature of 20.2 degrees were 2.9 degrees, 2.5 degrees and 2.6 degrees above their corresponding normals (or 3.4 degrees, 2.9 degrees and 3.0 degrees above their corresponding 1981-2010 normals) and all of them were the highest of the correspondingly monthly mean values of March on record. The month was also much drier than usual with a total rainfall of only 3.5 millimetres, about 5 percent of the normal figure of 75.3 millimetres (or 4 percent of the 1981-2010 normal of 82.2 millimetres) and the fourth lowest on record for March. The accumulated rainfall recorded in the first three months of the year was 65.6 millimetres, a deficit of 55 percent compared to the normal of 147.4 millimetres (or 59 percent below the 1981-2010 normal of 161.3 millimetres) for the same period.

Weather Condition – April 2021

With relatively less cold air intrusion from the north, April 2021 continued to be much warmer than usual in Hong Kong. The monthly mean minimum temperature of 22.4 degrees, monthly mean maximum temperature of 27.0 degrees and monthly mean temperature of 24.1 degrees were 1.3 degrees, 1.4 degrees and 1.1 degrees above their corresponding normals (or 1.6 degrees, 2.0 degrees and 1.5 degrees above their corresponding 1981-2010 normals) and respectively the fifth, seventh and ninth highest on record for April. With the dominance of upper-air anticyclone over southern China for most of the time in the month, April 2021 was also much drier than usual with a total rainfall of only 32.5 millimetres, about 21 percent of the normal figure of 153.0 millimetres (or 19 percent of the 1981-2010 normal of 174.7 millimetres). The accumulated rainfall recorded in the first four months of the year was 98.1 millimetres, a deficit of 67 percent when compared to the normal of 300.4 millimetres (or 71 percent below the 1981-2010 normal of 336.1 millimetres) and the tenth lowest on record for the same period.

Weather Condition – May 2021

Mainly attributing to the stronger than usual subtropical ridge over southern China, May 2021 was the hottest May in Hong Kong on record. The monthly mean temperature of 29.0 degrees and monthly mean minimum temperature of 27.0 degrees were 2.7 degrees and 2.5 degrees above their corresponding normals (or 3.1 degree and 2.9 degrees above their corresponding 1981-2010 normals) and both were the highest on record for May. The mean maximum temperature of 32.1 degrees was 3.3 degrees above normal (or 3.7 degrees above the 1981-2010 normals) and the second highest on record for May. Together with the exceptionally warm weather in March and April 2021, Hong Kong experienced the warmest spring on record from March to May 2021. The mean temperature of 25.0 degrees, mean minimum temperature of 23.2 degrees and mean maximum temperature of 28.0 degrees for March to May 2021 were all the highest on record for the same period. There were in total 14 hot nights in the month including 6 consecutive hot nights that started from 16 May, both breaking the records for May. The month was also much drier than usual with a total rainfall of only 65.0 millimetres, about 22 percent of the normal figure of 290.6 millimetres (or 21 percent of the 1981-2010 normal of 304.7 millimetres). The accumulated rainfall recorded in the first five months of the year was 163.1 millimetres, a deficit of 72 percent when compared to the normal of 590.9 millimetres (or 75 percent below the 1981-2010 normal of 640.8 millimetres) and the second lowest on record for the same period.

Appendix H

Waste Flow Table

Year	Month	Actual Quantities of Inert C&D Materials Generated Monthly					Actual Quantities of Import Fill (in '000m ³)	Actual Quantities of Non-inert C&D Waste Generated Monthly				
		Total Quantities Generated	Broken Concrete (see Note 3)	Reused in the Contract	Reused in Other Projects	Disposed in Public Fill		Metal	Paper / Cardboard Packaging	Plastics (see Note 2)	Chemical Waste	Others: tree branches, root and leaves
		(in '000m ³)	(in '000m ³)	(in '000m ³)	(in '000m ³)	(in '000m ³)		(in '000kg)	(in '000kg)	(in '000kg)	(in '000kg)	(in '000m ³)
2013-2016	Jun 13- Dec16	0	0	0	0	0	0	0	0	0	0	0
	Jan	0	0	0	0	0	0	0	0	0	0	0
2017	Feb	0	0	0	0	0	0	0	0	0	0	0.0024
	Mar	0	0	0	0	0	0	0	0	0	0	0
	Apr	0	0	0	0	0	0	0	0	0	0	0
	May	0	0	0	0	0	0	4.97	0	0	0	0.103644
	Jun	0	0	0	0	0	0	0	0	0	0	0.0064
	Sub-total:	0	0	0	0	0	0	4.97	0	0	0	0.112444
	Jul	0	0	0	0	0	0	0	0	0	0	0.01104
	Aug	0	0	0	0	0	0	0	0	0	0	0
	Sep	0	0	0	0	0	0	0	0	0	0	0.02883
	Oct	0	0	0	0	0	0	0	0	0	0	0
	Nov	0.04875	0	0	0	0.04875	0	0	0	0	0	0.26
	Dec	0	0	0	0	0	0	0	0	0	0	0.0325
Total:	0.04875	0	0	0	0.04875	0	4.97	0	0	0	0.444814	
2018	Jan	0	0	0	0	0	0	0	0	0	0	0.078
	Feb	0	0	0	0	0	0	0	0	0	0	0
	Mar	1.633125	0	0	0	1.633125	0	0	0	0	0	0.0065
	Apr	1.31625	0	0	0	1.31625	0	0	0	0	0	0
	May	0	0	0	0	0	1.648	0	0	0	0	0.0065
	Jun	0	0	0	0	0	2.728	0	0	0	0	0
	Sub-total:	2.998125	0	0	0	2.998125	4.376	4.97	0	0	0	0.535814
	Jul	0	0	0	0	0	4.88	0	0	0	0	0
	Aug	1.14	0	0	0	1.14	4.832	0	0	0	0	0
	Sep	1.08	0	0	0	1.08	2.472	0	0	0	0	0
	Oct	0	0	0	0	0	2.304	0	0	0	0	0.0195
	Nov	0.224	0	0	0	0.224	0.664	0	0	0	0	0.0065
Dec	0.904	0	0	0	0.904	0.224	0	0	0	0	0	
Total:	6.346125	0	0	0	6.346125	19.752	4.97	0	0	0	0.561814	
2019	Jan	0.384	0	0	0	0.384	0.504	0	0	0	0	0.0065
	Feb	0	0	0	0	0	0.36	0	0	0	0	0
	Mar	0	0	0	0	0	1.2	0	0	0	0	0
	Apr	0	0	0	0	0	1.512	0	0	0	0	0.0065
	May	0	0	0	0	0	0.8	0	0	0	0	0.0065
	Jun	0.712	0	0	0	0.712	5.104	0	0	0	0	0.0065
	Sub-total:	7.442125	0	0	0	7.442125	29.232	4.97	0	0	0	0.587814
	Jul	0.728	0	0	0	0.728	0	0	0	0	0	0.0065
	Aug	0.672	0	0	0	0.672	0	0	0	0	0	0.013
	Sep	0.968	0	0	0	0.968	0	0	0	0	0	0.026
	Oct	1.112	0	0	0	1.112	0.056	0	0	0	0	0.026
	Nov	0.32	0	0	0	0.32	0.32	0	0	0	0	0.013
Dec	1.08	0	0	0	1.08	1.832	0	0	0	0	0.0195	
Total:	12.322125	0	0	0	12.322125	31.44	4.97	0	0	0	0.691814	
2020	Jan	0.208	0	0	0	0.208	1.112	0	0	0	0	0.013
	Feb	0.392	0	0	0	0.392	1.864	0	0	0	0	0.039
	Mar	0.008	0	0	0	0.008	0.424	0	0	0	0	0.0585
	Apr	0.128	0	0	0	0.128	0	0	0	0	0	0.0065
	May	0.144	0	0	0	0.144	0	0	0	0	0	0.039
	Jun	0	0	0	0	0	0.232	0	0	0	0	0.013
	Sub-total:	13.202125	0	0	0	13.202125	35.072	4.97	0	0	0	0.860814
	Jul	0	0	0	0	0	0.64	0	0	0	0	0.0195
	Aug	0.016	0	0	0	0.016	0.392	0	0	0	0	0.013
	Sep	0.691	0	0	0	0.691	0.08	0	0	0	0	0.005
	Oct	2.88	0	0	0	2.88	0	0	0	0	0	0.03
	Nov	1.37	0	0	0	1.37	0	0	0	0	0	0.015
Dec	0.054	0	0	0	0.054	0	0	0	0	0	0.006	
Total:	18.213125	0	0	0	18.213125	36.184	4.97	0	0	0	0.949314	
2021	Jan	0.724	0	0	0	0.724	0	0	0	0	0	0.003
	Feb	0	0	0	0	0	0	0	0	0	0	0.0041
	Mar	0.01	0	0	0	0.01	0.000	0	0	0	0	0.005
	Apr	0	0	0	0	0	0	0	0	0	0	0.0105
	May	0	0	0	0	0	0	0	0	0	0	0
	Jun	0	0	0	0	0	0	0	0	0	0	0
	Sub-total:	18.947125	0	0	0	18.947125	36.184	4.97	0	0	0	0.971914
	Jul											
	Aug											
	Sep											
	Oct											
	Nov											
Dec												
Total:	18.947125	0	0	0	18.947125	36.184	4.97	0	0	0	0.971914	

Appendix I

**Implementation Schedule for
Environmental Mitigation Measures**

EIA Ref.	EM&A Ref	Environmental Protection Measures	Objectives of the Recommended Measure & Main Concerns to address	Location/Duration of Measures/Timing of Completion of Measures	Implementation Agent	Implementation Stage				Relevant Legislation Guidelines
						Des	C	O	Dec	
<i>Air Quality – Construction Phase</i>										
4.5.1	-	<u>Dust Control</u>								
		a Vehicle washing facilities should be provided at the designated vehicle exit point;	To ensure dust emission is controlled and compliance with relevant statutory requirements	Project Site / During construction	Contractor	✓				<i>Air Pollution Control (Construction Dust) Regulations</i>
		b Every vehicle should be washed to remove any dusty materials from its body and wheels immediately before leaving the worksite;								
		c The load carried by the trucks should be covered entirely to ensure no leakage from the vehicles;								
		d Hoarding of not less than 2.4 m high from ground level should be provided along the entire length of that portion of the site boundary adjoining a road or other area accessible to the public except for a site entrance or exit;								
		e The main haul road should be kept clear of dusty materials and should be sprayed with water so as to maintain the entire road surface wet at all the time;								
		f The stockpile of dusty materials should be either covered entirely by								

EIA Ref.	EM&A Ref	Environmental Protection Measures	Objectives of the Recommended Measure & Main Concerns to address	Location/Duration of Measures/Timing of Completion of Measures	Implementation Agent	Implementation Stage				Relevant Legislation Guidelines	
						Des	C	O	Dec		
		impervious sheets; place in an area sheltered on the top and three sides; or sprayed with water to maintain the entire surface wet at all the time; g Belt conveyor system should be enclosed on the top and two sides; h The height of the belt conveyor should be kept as low as possible to avoid delivery at height; and i All the exposed area should be kept wet always to minimise dust emission.									
4.5.1	-	<u>Air Quality Control</u>									
		a All dump trucks entering or leaving the Project Site should be provided with mechanical covers in good service condition; and b Ultra-low-sulphur diesel (ULSD) should be used for all construction plant on site.	To ensure air quality standards compliance with relevant statutory requirements	Project Site / During construction	Contractor		✓				<i>ETWB TCW No 19/2005</i>
4.7.1	-	<u>EM&A Requirements</u>									
		Regular site audits (at a frequency of not									

EIA Ref.	EM&A Ref	Environmental Protection Measures	Objectives of the Recommended Measure & Main Concerns to address	Location/Duration of Measures/Timing of Completion of Measures	Implementation Agent	Implementation Stage				Relevant Legislation Guidelines
						Des	C	O	Dec	
		less than once every two weeks) are recommended.	To ensure that appropriate dust control measures are implemented and good site practices are adopted	Project Site / During construction	ET and Contractor		✓			<i>Air Pollution Control (Construction Dust) Regulations</i>
4.7.1	3.0-3.7	Implementation of a construction dust monitoring in every six days	To ensure compliance with the relevant criterion during the construction works.	ASRs A4 (No. 101 Lung Mei Tsuen) and A6 (No. 79 Lo Tsz Tin tsuen) / during construction	ET and Contractor		✓			<i>Air Pollution Control (Construction Dust) Regulations</i>
Noise – Construction Phase										
5.6.1		Site hoardings at the particular work site boundary may be provided for achieving screening effect, provided that the hoardings have no openings or gaps and meet the same specifications for movable noise barriers. The proposed movable noise barriers should be at least 3m high with a surface density of not less than 7 kg m ⁻² , which could provide a minimum of 5 dB(A) attenuation. Skid footing of movable noise barriers should be located at a distance not more than a few metres of stationary plant and mobile plant such that the NSRs would not have direct line of sight to the plant. The length of the barriers should also be at least five times greater than its height.	To reduce the construction noise impact.	Project Site / During construction	ET and Contractor		✓			<i>Noise Control Ordinance (NCO) and Annex 5 of the EIAO-TM</i>
5.7.1	-	The following Quiet Powered Mechanical	To reduce the construction	Project Site / During	Contractor		✓			<i>Noise Control</i>

EIA Ref.	EM&A Ref	Environmental Protection Measures	Objectives of the Recommended Measure & Main Concerns to address	Location/Duration of Measures/Timing of Completion of Measures	Implementation Agent	Implementation Stage				Relevant Legislation Guidelines
						Des	C	O	Dec	
(Table 5.12)		<p>Equipment (PME) should be used during the construction Phase.</p> <ul style="list-style-type: none"> Mobile Crane, SWL listed in the data base of quality powered mechanical equipment prepared by the Noise Control Authority, 107 dB(A); Tracked Loader, British Standard 5228 – Table C3, Reference No. 16, 104 dB(A); Pneumatic breaker, British Standard 5228 – Table C2, Reference No. 10, 110 dB(A); Concrete Lorry Mixer British Standard 5228 – Table C6, Reference No. 23, 100 dB(A); and Excavator British Standard 5228 - Table C3, Reference No. 97, 105 dB(A). 	noise impact.	construction phase					<i>Ordinance (NCO) and Annex 5 of the EIAO-TM</i>	
5.7.1 (Table 5.13)	-	<p><u>Construction Works on Land</u></p> <p>Movable noise barrier should be provided for excavator and mobile crane;</p> <p>Timber sawing machine should be operated behind site hoarding/ movable noise barrier; and</p> <p>Concrete lorry mixer should be operated behind site hoarding/movable noise barrier.</p>	To reduce the construction noise impact.	Project Site / During the Site Formation, construction of seawall, ramp, staircase, retaining walls, sump tanks for grey water system and superstructure	Contractor		✓			<i>Noise Control Ordinance (NCO) and Annex 5 of the EIAO-TM</i>

EIA Ref.	EM&A Ref	Environmental Protection Measures	Objectives of the Recommended Measure & Main Concerns to address	Location/Duration of Measures/Timing of Completion of Measures	Implementation Agent	Implementation Stage				Relevant Legislation Guidelines
						Des	C	O	Dec	
5.7.1 (Table 5.13)	-	Timber sawing machine should be operated behind movable noise barrier; and Movable noise barrier should be provided for excavator and mobile crane.	To reduce the construction noise impact.	Project Site / During the localised road widening works along Ting Kok Road	Contractor		✓			<i>Noise Control Ordinance (NCO) and Annex 5 of the EIAO-TM</i>
5.7.1 (Table 5.13)	-	<u>Car Park Paving</u> Movable noise barrier should be provided for excavator.	To reduce the construction noise impact.	Project Site / During the car park paving	Contractor		✓			<i>Noise Control Ordinance (NCO) and Annex 5 of the EIAO-TM</i>
5.7.1 (Table 5.13)	-	<u>Building Works</u> Movable noise barrier should be provided for excavator, mobile crane and earth auger; and Timber sawing machine should be operated behind site hoarding/ movable noise barrier.	To reduce the construction noise impact.	Project Site / During foundation and tanking works	Contractor		✓			<i>Noise Control Ordinance (NCO) and Annex 5 of the EIAO-TM</i>
5.7.1 (Table 5.13)	-	Movable noise barrier should be provided for mobile crane; and Timber sawing machine should be operated behind site hoarding/ movable noise barrier.	To reduce the construction noise impact.	Project Site / During superstructure works	Contractor		✓			<i>Noise Control Ordinance (NCO) and Annex 5 of the EIAO-TM</i>

EIA Ref.	EM&A Ref	Environmental Protection Measures	Objectives of the Recommended Measure & Main Concerns to address	Location/Duration of Measures/Timing of Completion of Measures	Implementation Agent	Implementation Stage				Relevant Legislation Guidelines
						Des	C	O	Dec	
5.7.1 (Table 5.13)	-	Movable noise barrier should be provided for mobile crane.	To reduce the construction noise impact.	Project Site / During building finishes & internal fitting-out	Contractor		✓			<i>Noise Control Ordinance (NCO) and Annex 5 of the EIAO-TM</i>
5.7.1 (Table 5.13)	-	<u>Rock filling for the Groynes</u> Movable noise barrier should be provided for excavator and derrick lighter.	To reduce the construction noise impact.	Project Site / During the construction of gabion channel	Contractor		✓			<i>Noise Control Ordinance (NCO) and Annex 5 of the EIAO-TM</i>
5.7.1 (Table 5.13)	-	<u>Box Culvert Construction</u> Movable noise barrier should be provided for excavator.	To reduce the construction noise impact.	Project Site / During the construction of gabion channel	Contractor		✓			<i>Noise Control Ordinance (NCO) and Annex 5 of the EIAO-TM</i>
5.7.1 (Table 5.13)	-	Movable noise barrier should be provided for excavator, mobile crane; and Concrete lorry mixer should be operated behind site hoarding/movable noise barrier.	To reduce the construction noise impact.	Project Site / During the construction of western culvert	Contractor		✓			<i>Noise Control Ordinance (NCO) and Annex 5 of the EIAO-TM</i>
5.7.1 (Table 5.13)	-	Concrete lorry mixer should be operated behind site hoarding/movable noise barrier.	To reduce the construction noise impact.	Project Site / During the construction of eastern culvert	Contractor		✓			<i>Noise Control Ordinance (NCO) and Annex 5 of the EIAO-TM</i>
5.7.1	-	Site hoarding should be provided for work	To reduce the construction	Project Site / During	Contractor		✓			<i>Noise Control</i>

EIA Ref.	EM&A Ref	Environmental Protection Measures	Objectives of the Recommended Measure & Main Concerns to address	Location/Duration of Measures/Timing of Completion of Measures	Implementation Agent	Implementation Stage				Relevant Legislation Guidelines
						Des	C	O	Dec	
(Table 5.13)		site.	noise impact.	the construction of 90m box culvert						<i>Ordinance (NCO) and Annex 5 of the EIAO-TM</i>
5.7.1 (Table 5.13)	-	<u>Sand Filling</u> Movable noise barrier should be provided for excavator.	To reduce the construction noise impact.	Project Site / During the construction of gabion channel	Contractor		✓			<i>Noise Control Ordinance (NCO) and Annex 5 of the EIAO-TM</i>
5.7.1	-	<u>Good Site Practice</u> Only well-maintained plant should be operated on-site and plant should be serviced regularly during the construction programme; Silencers or mufflers on construction equipment should be utilized and should be properly maintained during the construction programme; Mobile plant, if any, should be sited as far from NSRs as possible; Machines and plant (such as trucks) that may be in intermittent use should be shut down between work periods or should be throttled down to a minimum; Plant known to emit noise strongly in one direction should, wherever possible, be	To reduce the construction noise impact.	Project Site / Throughout the construction period	Contractor		✓			<i>Noise Control Ordinance (NCO) and Annex 5 of the EIAO-TM</i>

EIA Ref.	EM&A Ref	Environmental Protection Measures	Objectives of the Recommended Measure & Main Concerns to address	Location/Duration of Measures/Timing of Completion of Measures	Implementation Agent	Implementation Stage				Relevant Legislation Guidelines
						Des	C	O	Dec	
		orientated so that the noise is directed away from the nearby NSRs; and Material stockpiles and other structures should be effectively utilised, wherever practicable, in screening noise from on-site construction activities.								
5.9.1	4.1	<u>EM&A Requirements</u> Implementation of weekly construction noise monitoring at the representative NSRs.	To ensure compliance with the relevant criterion during the construction works.	N1, N2/N2a, N3 & N4/ Throughout the construction period	ET and Contractor		✓			<i>Noise Control Ordinance (NCO) and Annex 5 of the EIAO-TM</i>
Water Quality – Construction Phase										
6.6.1	-	<u>Dredging and Sandfilling Operations</u> Sandfilling works should be carried out after the completion of groyne construction.	To further minimise the SS level during sandfilling works	Project Site / During sandfilling	Contractor		✓			-
6.6.1 and Figure 6.20	-	A movable cage type / metal frame type silt curtain will be deployed around the dredging area next to the grab dredger prior to commencement of dredging works.	To further minimise the SS level during the dredging and sandfilling works	Project Site / During dredging and sandfilling	Contractor		✓			<i>Annex 6 of the EIAO-TM</i>
6.6.1 and Figure 6.21	-	Standing type silt curtains will be deployed around the proposed sandfilling extent prior to commencement of sandfilling works.	To further minimise the SS level during the dredging and sandfilling works	Project Site / During dredging and sandfilling	Contractor		✓			<i>Annex 6 of the EIAO-TM</i>
6.6.1	-	A hourly dredging rate of a closed grab dredger (with a minimum grab size of 3 m ³) should be less than 31 m ³ hr ⁻¹ , with	To further minimise the SS level during the dredging works	Project Site / During dredging	Contractor		✓			-

EIA Ref.	EM&A Ref	Environmental Protection Measures	Objectives of the Recommended Measure & Main Concerns to address	Location/Duration of Measures/Timing of Completion of Measures	Implementation Agent	Implementation Stage				Relevant Legislation Guidelines
						Des	C	O	Dec	
		reference to the maximum rate for dredging, which was derived in the EIA.								
6.6.1	-	A daily filling rate should be less than 1,000 m ³ day ⁻¹ , which was defined in the EIA.	To further minimise the SS level during the sandfilling works	Project Site / During sandfilling	Contractor		✓			-
6.6.1	-	Mechanical grabs should be designed and maintained to avoid spillage and should seal tightly while being lifted.	To further minimise the SS level during the dredging works	Project Site / During dredging	Contractor		✓			-
6.6.1	-	Barges or hoppers should have tight fitting seals to their bottom openings to prevent leakage of material.	To further minimise the SS level during the dredging and sandfilling works	Project Site / During dredging and sandfilling	Contractor		✓			-
6.6.1	-	Loading of barges or hoppers shall be controlled to prevent splashing of dredged material to the surrounding water.	To further minimise the SS level during the dredging works	Project Site / During dredging	Contractor		✓			-
6.6.1	-	Barges or hoppers should not be filled to a level which will cause overflow of materials or pollution of water during loading or transportation.	To further minimise the SS level during the dredging and sandfilling works	Project Site / During dredging and sandfilling	Contractor		✓			-
6.6.1	-	Excess material should be cleaned from the decks and exposed fittings of barges or hoppers before the vessel is moved.	To further minimise the SS level during the dredging and sandfilling works	Project Site / During dredging and sandfilling	Contractor		✓			-
6.6.1	-	Adequate freeboard should be maintained on barges to reduce the likelihood of decks being washed by wave action.	To further minimise the SS level during the dredging and sandfilling works	Project Site / During dredging and sandfilling	Contractor		✓			-
6.6.1	-	All vessels should be sized such that adequate clearance is maintained between vessels and the seabed at all states of the	To further minimise the SS level during the dredging and sandfilling works	Project Site / During dredging and sandfilling	Contractor		✓			-

EIA Ref.	EM&A Ref	Environmental Protection Measures	Objectives of the Recommended Measure & Main Concerns to address	Location/Duration of Measures/Timing of Completion of Measures	Implementation Agent	Implementation Stage				Relevant Legislation Guidelines
						Des	C	O	Dec	
		tide to ensure that undue turbidity is not generated by turbulence from vessel movement or propeller wash.								
6.6.1	-	The works should not cause foam, oil, grease, litter or other objectionable matter to be present in the water within and adjacent to the Project Site.	To further minimise the SS level during the dredging and sandfilling works	Project Site / During dredging and sandfilling	Contractor		✓			<i>ProPECC PN 1/94</i>
6.6.1	-	<u>Construction Site Runoff</u> The excavation works for the drainage diversions should be carried out to minimise any seawater influx entering the works area and hence to keep the works area dry as much as possible.	To ensure the works area will be kept dry as much as possible and hence avoid construction site runoff	Project Site / During excavation for the drainage diversions	Contractor		✓			-
6.6.1 and Figure 6.21	-	Silt curtains at the inshore waters should be deployed to enclose the works area before the commencement of the excavation works for two drainage diversions until the completion of the diversions.	To avoid any adverse water quality impacts resulting from the site runoff due to heavy rainfall	Project Site / During excavation for the drainage diversions	Contractor		✓			-
6.6.1	-	At the start of site establishment, perimeter cut-off drains to direct off-site water around the site should be constructed and internal drainage works and erosion and sedimentation control facilities implemented. Channels, earth bunds or sand bag barriers should be provided on site to direct stormwater to silt removal facilities. The design of efficient silt removal facilities should be based on the guidelines in <i>Appendix A1</i> of <i>ProPECC PN 1/94</i> .	To minimise the construction site runoff	Project Site / During land based construction works	Contractor		✓			<i>ProPECC PN 1/94</i>
6.6.1	-	All the surface runoff should be collected by	To minimise the	Project Site / During	Contractor		✓			<i>ProPECC PN</i>

EIA Ref.	EM&A Ref	Environmental Protection Measures	Objectives of the Recommended Measure & Main Concerns to address	Location/Duration of Measures/Timing of Completion of Measures	Implementation Agent	Implementation Stage				Relevant Legislation Guidelines
						Des	C	O	Dec	
		the on-site drainage system and diverted through the silt traps prior to discharge into storm drain.	construction site runoff	land based construction works						1/94
6.6.1	-	All exposed earth areas should be completed as soon as possible after earthworks have been completed, or alternatively, within 14 days of the cessation of earthworks, where practicable. If excavation of soil cannot be avoided during the rainy season, or at any time of year when rainstorms are likely, exposed slope surfaces should be covered by tarpaulin or by other means.	To minimise the construction site runoff	Project Site / During land based construction works	Contractor		✓			ProPECC PN 1/94
6.6.1	-	All drainage facilities and erosion and sediment control structures should be regularly inspected and maintained to ensure proper and efficient operation at all times and particularly following rainstorms. Deposited silt and grit should be removed regularly and disposed of by spreading evenly over stable, vegetated areas.	To minimise the construction site runoff	Project Site / During land based construction works	Contractor		✓			ProPECC PN 1/94
6.6.1	-	Measures should be taken to reduce the ingress of site drainage into excavations. If the excavation of trenches in wet periods is necessary, they should be dug and backfilled in short sections wherever practicable. Water pumped out from trenches or foundation excavations should be discharged into storm drains via silt removal	To minimise the construction site runoff	Project Site / During land based construction works	Contractor		✓			ProPECC PN 1/94

EIA Ref.	EM&A Ref	Environmental Protection Measures	Objectives of the Recommended Measure & Main Concerns to address	Location/Duration of Measures/Timing of Completion of Measures	Implementation Agent	Implementation Stage				Relevant Legislation Guidelines
						Des	C	O	Dec	
		facilities.								
6.6.1	-	Open stockpiles of construction materials (for example, aggregates, sand and fill material) of more than 50 m ³ should be covered with tarpaulin or similar fabric during rainstorms. Measures should be taken to prevent the washing away of construction materials, soil, silt or debris into any drainage system.	To minimise the construction site runoff	Project Site / During land based construction works	Contractor		✓			<i>ProPECC PN 1/94</i>
6.6.1	-	Manholes (including newly constructed ones) should always be adequately covered and temporarily sealed so as to prevent silt, construction materials or debris being washed into the drainage system.	To minimise the construction site runoff	Project Site / During land based construction works	Contractor		✓			<i>ProPECC PN 1/94</i>
6.6.1	-	Precautions to be taken at any time of year when rainstorms are likely, actions to be taken when a rainstorm is imminent or forecasted, and actions to be taken during or after rainstorms are summarised in <i>Appendix A2 of ProPECC PN 1/94</i> . Particular attention should be paid to the control of silty surface runoff during storm events, especially for areas located near steep slopes.	To minimise the construction site runoff	Project Site / During land based construction works	Contractor		✓			<i>ProPECC PN 1/94</i>
6.6.1	-	Oil interceptors should be provided in the	To minimise the	Project Site / During	Contractor		✓			<i>ProPECC PN</i>

EIA Ref.	EM&A Ref	Environmental Protection Measures	Objectives of the Recommended Measure & Main Concerns to address	Location/Duration of Measures/Timing of Completion of Measures	Implementation Agent	Implementation Stage				Relevant Legislation Guidelines
						Des	C	O	Dec	
		drainage system and regularly emptied to prevent the release of oil and grease into the storm water drainage system after accidental spillages. The interceptor should have a bypass to prevent flushing during periods of heavy rain.	construction site runoff	land based construction works						1/94
6.6.1	-	All temporary and permanent drainage pipes and culverts provided to facilitate runoff discharge should be adequately designed for the controlled release of storm flows. All sediment traps should be regularly cleaned and maintained. The temporary diverted drainage should be reinstated to the original condition when the construction work has finished or the temporary diversion is no longer required.	To minimise the construction site runoff	Project Site / During land based construction works	Contractor		✓			ProPECC PN 1/94
6.6.1	-	<u>Sewage Generated by Workforce</u> Sewage from toilets should be collected by a licensed waste collector.	To prevent contamination to nearby environment	Project Site / During land based construction works	Contractor		✓			Water Pollution Control Ordinance
6.6.1	-	<u>Storage and Handling of Oil, Other Petroleum Products and Chemicals</u> Waste streams classifiable as chemical wastes should be properly stored, collected and treated for compliance with <i>Waste Disposal Ordinance or Disposal (Chemical Waste) (General) Regulation</i> requirements.	To prevent contamination to nearby environment	Project Site / During land based construction works	Contractor		✓			Waste Disposal Ordinance
6.6.1	-	All fuel tanks and chemical storage areas should be provided with locks and be sited	To prevent contamination to	Project Site / During land based construction	Contractor		✓			Waste Disposal

EIA Ref.	EM&A Ref	Environmental Protection Measures	Objectives of the Recommended Measure & Main Concerns to address	Location/Duration of Measures/Timing of Completion of Measures	Implementation Agent	Implementation Stage				Relevant Legislation Guidelines	
						Des	C	O	Dec		
		on paved areas.	nearby environment	works						<i>Ordinance</i>	
6.6.1	-	The storage areas should be surrounded by bunds with a capacity equal to 110% of the storage capacity of the largest tank to prevent spilled oil, fuel and chemicals from reaching the receiving waters.	To prevent contamination to nearby environment	Project Site / During land based construction works	Contractor				✓		<i>Waste Disposal Ordinance</i>
6.6.1	-	Oil leakage or spillage should be contained and cleaned up immediately. Waste oil should be collected and stored for recycling or disposal, in accordance with the <i>Waste Disposal Ordinance</i> . The Contractors should prepare guidelines and procedures for immediate clean-up actions following any spillages of oil, fuel or chemicals.	To prevent contamination to nearby environment	Project Site / During land based construction works	Contractor				✓		<i>Waste Disposal Ordinance</i>
6.6.1	-	Vehicle and plant servicing areas, vehicle wash bays and lubrication bays should, as far as possible, be located within roofed areas. The drainage in these covered areas should be connected to foul sewers via a petrol interceptor.	To prevent contamination to nearby environment	Project Site / During land based construction works	Contractor				✓		<i>Waste Disposal Ordinance</i>
6.9.1 and 11.6.1	5.1	<u>EM&A Requirements</u> Monitoring of marine water quality during the construction phase is considered necessary to evaluate whether any impacts would be posed by these marine works on the surrounding waters during the operation of dredging and filling works.	To ensure the construction works would not arise any impacts to the surrounding waters	Marine water outside the Project Site / During dredging and filling works	ET and Contractor				✓		-

EIA Ref.	EM&A Ref	Environmental Protection Measures	Objectives of the Recommended Measure & Main Concerns to address	Location/Duration of Measures/Timing of Completion of Measures	Implementation Agent	Implementation Stage				Relevant Legislation Guidelines
						Des	C	O	Dec	

Water Quality – Post-Construction Phase (After the completion of the construction and before the operation of the beach)

6.9.2 and 11.6.2	5.2	<u>EM&A Requirements</u> <i>E. coli</i> monitoring should be conducted at the outlet of two diverted drains and at EPD's beach water monitoring stations for the identification of pollution loading and to establish relationship between the loading and EPD's beach monitoring programme.	To investigate the pollution loading of <i>E. coli</i> and to establish relationship with EPD's beach monitoring data	Two diverted drains and the Bathing Beach/ Within six weeks after the completion of the construction works	ET					Post-Construction Phase (After the completion of the construction and before the operation of the beach)
------------------	-----	---	---	---	----	--	--	--	--	--

Water Quality – Operational Phase

6.6.2	-	<u>Surface Runoff from Project Site</u> A petrol interceptor should be provided in the drainage system and regularly emptied to prevent the release of oil and grease into the storm water drainage system after accidental spillages. The interceptor should have a bypass to prevent flushing during periods of heavy rain. Where appropriate, the design should follow or of similar functions as stated in the <i>ProPECC PN</i>	To prevent contamination to nearby environment	Beach Park area / During operation	Operator	✓	✓			<i>Water Pollution Control Ordinance and ProPECC PN 1/94</i>
-------	---	---	--	---------------------------------------	----------	---	---	--	--	--

EIA Ref.	EM&A Ref	Environmental Protection Measures	Objectives of the Recommended Measure & Main Concerns to address	Location/Duration of Measures/Timing of Completion of Measures	Implementation Agent	Implementation Stage				Relevant Legislation Guidelines
						Des	C	O	Dec	
		<i>1/94.</i>								
6.6.2	-	Oil leakage or spillage should be contained and cleaned up immediately. Waste oil should be collected and stored for recycling or disposal in accordance with the <i>Waste Disposal Ordinance</i> .	To prevent contamination to nearby environment	Beach Building Facility / During operation	Operator	✓		✓		<i>Waste Disposal Ordinance</i>
Waste Management – Construction Phase										
7.6	-	The Contractor should submit the plan to Project Proponent’s Engineer Representative for endorsement prior to the commencement of the construction works. The plan should incorporate site-specific factors, such as the designation of areas for the segregation and temporary storage of reusable and recyclable materials.	To ensure that adverse environmental impacts are prevented	Project Site / Contract mobilisation and during construction	Contractor	✓	✓			-
7.6	-	It will be the Contractor’s responsibility to ensure that only reputable licensed waste collectors are used and that appropriate measures to reduce adverse impacts, including windblown litter and dust from the transportation of these wastes, are employed.	To ensure that adverse environmental impacts are prevented	Project Site / Contract mobilisation and during construction	Contractor	✓	✓			-
7.6	-	The Contractor must ensure that all the necessary permits or licences required under the Waste Disposal Ordinance are obtained for the construction phase.	To ensure compliance with relevant statutory requirements	Project Site / Contract mobilisation and during construction	Contractor	✓	✓			-
7.6	-	<u>Waste Management Hierarchy</u> <ul style="list-style-type: none"> Nomination of approved personnel to be responsible for good site practices, 	To ensure that adverse environmental impacts are prevented	Project Site / Contract mobilisation and during construction	Contractor	✓	✓			<i>Waste Disposal (Charges for Disposal of</i>

EIA Ref.	EM&A Ref	Environmental Protection Measures	Objectives of the Recommended Measure & Main Concerns to address	Location/Duration of Measures/Timing of Completion of Measures	Implementation Agent	Implementation Stage				Relevant Legislation Guidelines
						Des	C	O	Dec	
-		<p>arrangements for collection and effective disposal to an appropriate facility of all wastes generated at the site;</p> <ul style="list-style-type: none"> • Training of site personnel in proper waste management and chemical handling procedures; • Provision of sufficient waste disposal points and regular collection for disposal; • Appropriate measures to reduce windblown litter and dust transportation of waste by either covering trucks or by transporting wastes in enclosed containers; • Separation of chemical wastes for special handling and appropriate treatment at the Chemical Waste Treatment Centre; • Regular cleaning and maintenance programme for drainage systems, sumps and oil interceptors; and • A recording system for the amount of wastes generated/recycled and disposal sites. <p><u>Waste Reduction Measures</u></p> <ul style="list-style-type: none"> • Segregation and storage of different types of waste in different containers, skips or stockpiles to enhance reuse 	To reduce construction waste generation	Project Site / During construction	Contractor	✓				<p><i>Construction Waste) Regulation;</i></p> <p><i>ETWB TCW No.31/2004; and</i></p> <p><i>Appendix C of ETWB TCW No. 19/2005</i></p>

EIA Ref.	EM&A Ref	Environmental Protection Measures	Objectives of the Recommended Measure & Main Concerns to address	Location/Duration of Measures/Timing of Completion of Measures	Implementation Agent	Implementation Stage				Relevant Legislation Guidelines
						Des	C	O	Dec	
		<p>or recycling of material and their proper disposal;</p> <ul style="list-style-type: none"> • Encourage collection of aluminium cans and waste paper by individual collectors during construction with separate labelled bins being provided to allow the segregation of these wastes from other general refuse generated by the workforce; • Any unused chemicals and those with remaining functional capacity be recycled as far as possible; • Use of reusable non-timber formwork to reduce the amount of C&D materials; • Prior to disposal of construction waste, wood, steel and other metals should be separated, to the extent practical for re-use and/or recycling to reduce the quantity of waste to be disposed at landfills; • Proper storage and site practices to reduce the potential for damage or contamination of construction materials; and • Plan and stock construction materials carefully to reduce amount of waste generated and avoid unnecessary generation of waste. 								

EIA Ref.	EM&A Ref	Environmental Protection Measures	Objectives of the Recommended Measure & Main Concerns to address	Location/Duration of Measures/Timing of Completion of Measures	Implementation Agent	Implementation Stage				Relevant Legislation Guidelines
						Des	C	O	Dec	
7.6.1	-	<p><u>Dredging Materials</u></p> <p>The final disposal site for the dredged sediments should be determined by the MFC and a dumping licence should be obtained from EPD prior to the commencement of the dredging works. Uncontaminated sediments should be disposed of at open sea disposal sites designated by the MFC. For contaminated sediments requiring Type 2 confined marine disposal, relevant contract documents should specify the allocation conditions of the MFC and EPD.</p>	To ensure adverse environmental impacts are prevented	Dredging area / During construction	Contractor		✓			<i>Dumping at Sea Ordinance</i>
7.6.2	-	<p><u>Excavated Materials and C&D Waste</u></p> <p><i>Management of Waste Disposal</i></p> <p>The contractor should open a billing account with EPD in accordance with the Waste Disposal (Charges for Disposal of Construction Waste) Regulation for the payment of disposal charges. Every waste load transferred to Government waste disposal facilities such as public fill, sorting facilities, or landfills should require a valid “chit” which contains the information of the account holder to facilitate waste transaction recording and billing to the waste producer. A trip-ticket system should be established in accordance with TCW No. 6/2010 to monitor the reuse of surplus excavated materials off-site and disposal of construction waste and general refuse at</p>	To properly handle the excavated materials and C&D waste and thus avoid any adverse impacts	Project Site / During construction	Contractor		✓			<i>Waste Disposal (Charges for Disposal of Construction Waste) Regulation</i>

EIA Ref.	EM&A Ref	Environmental Protection Measures	Objectives of the Recommended Measure & Main Concerns to address	Location/Duration of Measures/Timing of Completion of Measures	Implementation Agent	Implementation Stage				Relevant Legislation Guidelines
						Des	C	O	Dec	
		transfer stations/landfills, and to control fly-tipping. The billing “chit” and trip-ticket system should be included as one of the contractual requirements and implemented by the contractor. Regular audits of the waste management measures implemented on-site as described in the Waste Management Plan should be conducted.								
		A recording system (similar to summary table as shown in Annex 4 and Annex 5 of Appendix C of ETWB TWC No. 19/2005) for the amount of waste generated, recycled and disposed of (including the disposal sites) will be established during the construction phase.								
7.6.2	-	<p><i>Reduction of C&D Materials Generation</i></p> <p>Public fill and construction waste should be segregated and stored in different containers or skips to facilitate reuse or recycling of the public fill and proper disposal of the construction waste. Specific areas of the work site should be designated for such segregation and storage if immediate use is not practicable.</p> <p>To reduce the potential dust and water quality impacts of site formation works, C&D materials should be wetted as quickly as possible to the extent practicable after excavation/filling.</p>	To reduce the generation of C&D waste	Project Site / During construction	Contractor		✓			-

EIA Ref.	EM&A Ref	Environmental Protection Measures	Objectives of the Recommended Measure & Main Concerns to address	Location/Duration of Measures/Timing of Completion of Measures	Implementation Agent	Implementation Stage				Relevant Legislation Guidelines
						Des	C	O	Dec	
7.6.3	-	<p><u>Chemical Waste</u></p> <p>The Contractor should register as a chemical waste producer with the EPD. Chemical waste, as defined by Schedule 1 of the Waste Disposal (Chemical Waste) (General) Regulation, should be handled in accordance with the Code of Practice on the Packaging, Handling and Storage of Chemical Wastes. Containers used for the storage of chemical wastes should:</p> <ul style="list-style-type: none"> • Be suitable for the substance they are holding, resistant to corrosion, maintained in a good condition, and securely closed; • Have a capacity of less than 450 L unless the specifications have been approved by the EPD; and • Display a label in English and Chinese in accordance with instructions prescribed in Schedule 2 of the Regulations. <p>The storage area for chemical wastes will:</p> <ul style="list-style-type: none"> • Be clearly labelled and used solely for the storage of chemical waste; • Be enclosed on at least 3 sides; 	To ensure proper handling of chemical waste	Project Site / During construction	Contractor	✓				<i>Code of Practice on the Packaging, Handling and Storage of Chemical Wastes</i>

EIA Ref.	EM&A Ref	Environmental Protection Measures	Objectives of the Recommended Measure & Main Concerns to address	Location/Duration of Measures/Timing of Completion of Measures	Implementation Agent	Implementation Stage				Relevant Legislation Guidelines
						Des	C	O	Dec	

- Have an impermeable floor and bunding, of capacity to accommodate 110% of the volume of the largest container or 20% by volume of the chemical waste stored in that area, whichever is the greatest;
- Have adequate ventilation;
- Be covered to prevent rainfall entering (water collected within the bund must be tested and disposed of as chemical waste, if necessary); and
- Be arranged so that incompatible materials are appropriately separated.

Chemical waste should be collected by a licensed chemical waste collector to a facility licensed to receive chemical waste, such as the Chemical Waste Treatment Facility.

EIA Ref.	EM&A Ref	Environmental Protection Measures	Objectives of the Recommended Measure & Main Concerns to address	Location/Duration of Measures/Timing of Completion of Measures	Implementation Agent	Implementation Stage				Relevant Legislation Guidelines
						Des	C	O	Dec	
7.6.4	-	<p><u>Sewage</u></p> <p>An adequate number of portable toilets should be provided for the on-site construction workforce during construction phase. All portable toilets should be maintained in a state that will not deter the users from using them. Night soil should be regularly collected by a licensed collector for disposal. The sewage generated from the visitors during operation of the Proposed Beach Development should be discharged to the adjacent foul sewer conveying to Tai Po Sewage Treatment Works for treatment.</p>	To ensure proper handling of sewage	Project Site / During construction	Contractor	✓				-
7.6.5	-	<p><u>General Refuse</u></p> <p>General refuse should be stored in enclosed bins or compaction units separately from construction and chemical wastes. A reputable waste collector should be employed to remove general refuse from the site, separately from construction and chemical wastes, on a daily basis to reduce odour, pest and litter impacts. The burning of refuse on construction sites is prohibited by law.</p> <p>Recycling bins should be provided at strategic locations to facilitate recovery of aluminium cans and waste paper from the Project Site. Materials recovered should be sold for recycling.</p>	To ensure proper handling of general refuse	Project Site / During construction	Contractor	✓				-

EIA Ref.	EM&A Ref	Environmental Protection Measures	Objectives of the Recommended Measure & Main Concerns to address	Location/Duration of Measures/Timing of Completion of Measures	Implementation Agent	Implementation Stage				Relevant Legislation Guidelines
						Des	C	O	Dec	
7.6.6	-	<p><u>Staff Training</u></p> <p>Training should be provided to workers on the concept of site cleanliness and appropriate waste management procedures, including waste reduction, reuse and recycling at the beginning of the construction works.</p>	To ensure that adverse environmental impacts are prevented	Project Site / Contract mobilisation and during construction	Contractor	✓	✓			-
7.7	6.1	<p><u>EM&A Requirements</u></p> <p>Joint site audits by the Environmental Team and the Contractor should be undertaken on a weekly basis. Particular attention should be given to the Contractor’s provision of sufficient spaces, adequacy of resources and facilities for on-site sorting and temporary storage of C&D materials. The C&D materials to be disposed of from the Project Site should be visually inspected. The public fill for delivery to the off-site stockpiling area should contain no observable non-inert materials (e.g., general refuse, timber, etc).</p> <p>The waste to be disposed of at refuse transfer stations or landfills should as far as possible contains no observable inert or reusable/recyclable C&D materials (e.g., soil, broken rock, metal, and paper/cardboard packaging, etc). Any irregularities observed during the weekly site audits should be raised promptly to the Contractor for rectification.</p>	To ensure that adverse environmental impacts are prevented	Project Site / During construction	ET and Contractor		✓			-

EIA Ref.	EM&A Ref	Environmental Protection Measures	Objectives of the Recommended Measure & Main Concerns to address	Location/Duration of Measures/Timing of Completion of Measures	Implementation Agent	Implementation Stage				Relevant Legislation Guidelines
						Des	C	O	Dec	
<i>Ecology – Construction Phase</i>										
8.10.2	7.1	<p><u>Measures for Common Rat Snake</u></p> <p>To undertake a search of the Common Rat Snake within the land based Project Site just before the commencement of the construction works. Due to the small size of the Project Site and given that there are no optimal habitats for Common Rat Snake, one day-time search is considered sufficient. The surveyor(s) should actively search the areas within the Project Site and pay special attention to the leaf litters and rocks. All recorded Common Rat Snake should be caught by hand and translocated to the shrubland at the north of the Study Area, immediately after the search. The Common Rat Snake search and translocation works should be undertaken by a qualified ecologist with relevant experience in faunal translocation works.</p>	To ensure that adverse impacts arising from the Project to Common Rat Snake are prevented	Project Site (land based) / prior to commencement of construction works	ET / Qualified Ecologist	✓				-
-	7.2	<p><u>Measures for marine ecology</u></p> <p>(1) To translocate target marine fauna, including fishes, starfish, sea urchins and sea cucumbers, from the intertidal area of the Site at Lung Mei to the intertidal area at the reception site of Ting Kok East before commencement of sand filling works or any other works that may cause disturbances to the</p>	To ensure that adverse impacts arising from the Project to marine ecology	Project Site (marine based) / prior to commencement of marine works	ET / Qualified Ecologist	✓				

EIA Ref.	EM&A Ref	Environmental Protection Measures	Objectives of the Recommended Measure & Main Concerns to address	Location/Duration of Measures/Timing of Completion of Measures	Implementation Agent	Implementation Stage				Relevant Legislation Guidelines
						Des	C	O	Dec	
		<p>existing marine ecology. The translocation works shall cover capturing, handling, holding transporting and releasing of the captured target marine fauna.</p> <p>(2) Translocation of seahorses, including identifying, capturing, handling, protecting, transporting and placing the target seahorse species from Site at Lung Mei to the reception site of Ting Kok East, as well as pre- and post-translocation monitoring and post-construction monitoring shall be conducted. Seahorse translocation shall be undertaken before the commencement of marine construction works. The identifying, capturing, handling, protecting, transporting and placing of seahorses shall be led and supervised by the Fish Specialist.</p>								
8.10.2	-	<p><u>Dredging and Sand Filling Operations</u></p> <p>It is predicted that the sediment plume and the sediment deposition will not be large in extent and no unacceptable water impacts including DO depletion, release of contaminants and nutrients are expected. Although no unacceptable water quality impacts would result, the following good construction site practice and proactive precautionary measures are recommended to</p>	To minimise ecological impacts arising from dredging and sand filling works	Project Site / During dredging and sand filling works	Contractor		✓			-

EIA Ref.	EM&A Ref	Environmental Protection Measures	Objectives of the Recommended Measure & Main Concerns to address	Location/Duration of Measures/Timing of Completion of Measures	Implementation Agent	Implementation Stage				Relevant Legislation Guidelines
						Des	C	O	Dec	
		<p>ensure dredging and sandfilling operations would be undertaken in such a manner as to avoid any uncontrolled or unexpected incidents during the marine works:</p> <ul style="list-style-type: none"> • A movable cage type / metal frame type silt curtain should be deployed around the dredging area next to the grab dredger prior to commencement of dredging works; • Standing type silt curtains should be deployed around the proposed sandfilling extent prior to commencement of sandfilling works; and <p>Proper equipment, dredging rate, filling rate and good construction practices should be implemented, details refer to <i>Section 6.6.1</i>.</p>								
8.10.2	-	<p><u>Measures for Controlling Construction Runoff</u></p> <ul style="list-style-type: none"> • Storm water run-off from the construction site should be directed into existing drainage channel via adequately designed sand/silt removal facilities such as sand/silt traps and oil interceptors. Channels, earth bunds or sand bag 	To minimise ecological impacts of construction runoff	Project Site / During dredging and filling works	Contractor		✓			-

EIA Ref.	EM&A Ref	Environmental Protection Measures	Objectives of the Recommended Measure & Main Concerns to address	Location/Duration of Measures/Timing of Completion of Measures	Implementation Agent	Implementation Stage				Relevant Legislation Guidelines
						Des	C	O	Dec	
		barriers should be provided on site to properly direct storm water to such silt removal facilities.								
8.10.2	-	<p><u>Planting along the Western Drainage Diversion</u></p> <ul style="list-style-type: none"> Provide tree/ shrub/ climber planting along the gabion wall of the new drainage channel. Regular monitoring and removal of the weed plant <i>Mikania micrantha</i> during the establishment and maintenance period. 	To provide an ecological habitat	Along gabion wall of the new western drainage channel/ After completion of the gabion	Contractor		✓	✓		-
8.10.2	-	<p><u>Good Construction Practices</u></p> <ul style="list-style-type: none"> Erect fences along the boundary of the Extension Site before the commencement of works to prevent vehicle movements, and encroachment of personnel, onto adjacent areas; and Regularly check the work site boundaries to ensure that they are not breached and that damage does not occur to surrounding areas. 	To avoid any adverse ecological impacts	Project Site / During construction works	Contractor		✓			-
<i>Fisheries – Construction Phase</i>										
9.10.1	-	<p><u>EM&A Requirements</u></p> <p>EM&A is not required during the</p>	To ensure that no water quality deterioration in the	Details refer to Section 12.6 of the EM&A	ET and Contractor		✓			<i>Environmental Impact</i>

EIA Ref.	EM&A Ref	Environmental Protection Measures	Objectives of the Recommended Measure & Main Concerns to address	Location/Duration of Measures/Timing of Completion of Measures	Implementation Agent	Implementation Stage				Relevant Legislation Guidelines
						Des	C	O	Dec	
		construction phase of the Project. However, water quality monitoring will be conducted at the Yim Tin Tsai Fish Culture Zone. Details should be referred to the Water Quality Section.	Fish Culture Zone as a result of the dredging and sandfilling works	Manual.						<i>Assessment Ordinance, Annex 21 of the EIAO-TM</i>
<i>Landscape and Visual Impact – Construction Phase</i>										
10.5.1	-	<u>Landscape Mitigation</u> A Landscape Plan will be submitted before the commencement of Works.	To provide landscaping work.	Before commencement of construction phase	ET and Contractor	✓				-
10.6.10	-	<i>Cultivation of areas impacted during construction.</i> Areas impacted during the construction phase that are not required during the operation phase, are to be cultivated to a depth of 300mm in accordance with accepted Hong Kong practice and guidelines. The cultivation shall involve ripping of compacted soil by mechanical means and the addition gypsum and/or organic fertiliser if required.	To improve the soil allowing plants to thrive	Project Site / During construction	Contractor		✓			-
10.6.10	-	<i>Car Park Tree Planting.</i> Advanced trees are to be planted in the car park.	To provide shade to the carpark areas and to reduce the mass of the paved areas	Project Site / During construction	Contractor		✓			-
10.6.10	-	<i>Tree and shrub planting.</i> All planting of trees and shrubs is to be carried out in accordance with the relevant best practice guidelines. Plant densities are to be provided in future detailed design documents and are to be selected so as to achieve a finished landscape that matches	To improve the appearance of the development	Project Site / During construction	Contractor			✓		-

EIA Ref.	EM&A Ref	Environmental Protection Measures	Objectives of the Recommended Measure & Main Concerns to address	Location/Duration of Measures/Timing of Completion of Measures	Implementation Agent	Implementation Stage				Relevant Legislation Guidelines
						Des	C	O	Dec	
		the surrounding, undisturbed, equivalent landscape types. Regular monitoring and removal of the weed plant <i>Mikania micrantha</i> during the establishment and maintenance period.								
10.6.10	-	<i>Roof Terrace Planting.</i> Trees, shrubs and climbers shall be established in planters on the roof terraces of the new structures where possible.	To improve the appearance of the development by softening the building element	Project Site / During construction	Contractor		✓			-
10.6.10	-	<i>Natural Rock Groynes</i> New rock groynes are needed to contain the sand of the new beach. Natural stones will be used for construction of the Groynes.	To improve the appearance of the development to make the man-made feature be more compatible with the surroundings	Project Site / During construction	Contractor		✓			-
10.6.10	-	<i>Inter-Tidal Re-generation.</i> It is likely that a build up of sediment and sand will occur at the outer edges of the rock groyne. This is a natural process and the development proponent has no control over the implementation of this mitigation measure.	To improve the appearance of the development	Adjacent areas	Nil			✓		-
10.6.10	-	<i>Mangrove Re-generation.</i> Mangroves of similar species to existing to be manually established by planting of droppings.	To improve the ecological value of the project	Project Site / During post-construction	Contractor		✓			-
10.6.10	-	<i>Buffer Planting.</i> Trees and shrubs are to be planted along Ting Kok road to screen the development from the nearby Village/Developed Areas.	To improve the appearance of the development	Project Site / During post-construction	Contractor		✓			-

EIA Ref.	EM&A Ref	Environmental Protection Measures	Objectives of the Recommended Measure & Main Concerns to address	Location/Duration of Measures/Timing of Completion of Measures	Implementation Agent	Implementation Stage				Relevant Legislation Guidelines
						Des	C	O	Dec	
10.6.10	-	<i>Early Planting Works</i> Where technically feasible, new plantings are to be installed during the construction works to reduce landscape impacts.	To improve the appearance of the development	Project Site / During construction	Contractor		✓			-
10.6.10	-	<i>Tree Protection/Transplantation.</i> Where technically feasible, existing trees in the Trees/Backshore Vegetation LR are to be retained. Those trees that cannot be retained that are of value are to be transplanted.	To improve the appearance of the development	Project Site / Before commencement of construction	Contractor		✓			-
10.7.9	-	<u>Visual Mitigation</u> <i>Design of Structures.</i> The structure shown in the photomontages are to illustrate the mass of the structures only. During the design phase of the development, features such as the location of doors, windows, eaves etc. will be detailed. All of these elements will greatly improve the appearance of the structures. Where possible, built structures will utilise appropriate designs to complement the surrounding landscape. Materials and finishes will also be considered during detailed design.	To reduce visual impacts and improve the appearance of the development	Project Site / During construction	Architect		✓			-
10.7.9	-	<i>Colour Scheme.</i> Colours for the structures can be used to complement the surrounding area. Lighter colours such as shades of light grey, off-white and light brown may be utilised where technically feasible to reduce the visibility of the structures.	To reduce visual impacts and improve the appearance of the development	Project Site / During construction	Architect		✓			-
10.7.9	-	<i>Plantings.</i> In addition to the landscape	To help integrate the new	Project Site / During	Contractor		✓			-

EIA Ref.	EM&A Ref	Environmental Protection Measures	Objectives of the Recommended Measure & Main Concerns to address	Location/Duration of Measures/Timing of Completion of Measures	Implementation Agent	Implementation Stage				Relevant Legislation Guidelines
						Des	C	O	Dec	
		mitigation plantings proposed in Section 10.5.9 of the EIA report, appropriate new plantings will be installed as appropriate to help integrate the new structures into the surrounding landscape.	structures into the surrounding landscape	post-construction						
10.7.9	-	<i>Colour of Site Hoardings.</i> In order to mitigate the visual impact of these temporary hoardings, it is recommended that the hoardings be erected at a uniform height, with a uniform colour that complements the existing surrounding landscape.	To mitigate the visual impact of temporary hoardings	Project Site / During construction	Contractor		✓			-
-	9.2	<u>EM&A Requirements</u> A specialist Landscape Sub-Contractor should be employed for the implementation of landscape construction works and subsequent maintenance operations during a 12-month establishment period. A Registered Landscape Architect should be employed to supervise the specialist Landscape Sub-contractor for the implementation of landscape works, both hard and soft, involved. Measures undertaken by both the Contractor(s) and the specialist Landscape Sub-Contractor during the construction phase and first year post-construction will be audited by the Registered Landscape Architect of the ET. Site inspections should be undertaken at	To check the implementation and maintenance of landscape mitigation measures and ensure that they are fully realised and that potential conflicts between the proposed landscape measures and any other project works and operational requirements are resolved at the earliest practical date and without compromise to the intention of the mitigation measures	Project Site / During construction and post-construction phase	Specialist Landscape Sub-contractor, Registered Landscape Architect and ET		✓			-

EIA Ref.	EM&A Ref	Environmental Protection Measures	Objectives of the Recommended Measure & Main Concerns to address	Location/Duration of Measures/Timing of Completion of Measures	Implementation Agent	Implementation Stage				Relevant Legislation Guidelines
						Des	C	O	Dec	
		least once every two weeks throughout the landscaping plants establishment period when planting works are being undertaken.								
		<p>A tree survey should be prepared, for DLO submission, and for the purpose of existing trees protection. Removal of existing trees to be minimized. The Contractor should consider to employ a certified arborist when sizable and valuable existing tree(s) protection of transplant is required.</p> <p>Post-construction phase auditing will be restricted to the 12-month establishment works of the landscaping proposals.</p> <p>Advance planting- monitoring of implementation and maintenance of planting, and against potential incursion, physical damage, fire, pollution, surface erosion, etc.</p> <p>Protection of trees to be retained-identification and demarcation of trees / vegetation to be retained, erection of physical protection (e.g. fencing), monitoring against potential incursion, physical damage, fire, pollution, surface erosion, etc.</p> <p>Clearance of existing vegetation-identification and demarcation of trees / vegetation to be cleared, checking of</p>								

EIA Ref.	EM&A Ref	Environmental Protection Measures	Objectives of the Recommended Measure & Main Concerns to address	Location/Duration of Measures/Timing of Completion of Measures	Implementation Agent	Implementation Stage				Relevant Legislation Guidelines
						Des	C	O	Dec	
		extent of works to reduce damage, monitoring of adjacent areas against potential incursion, physical damage, fire, pollution, surface erosion, etc.								
		Transplanting of trees-identification and demarcation of trees / vegetation to be transplanted, monitoring of extent of pruning / lifting works to reduce damage, timing of operations, implementation of the stages of preparatory and translocation works, and maintenance of transplanted vegetation, etc.								
		Plant supply-monitoring of operations relating to the supply of specialist plant material (including the collecting, germination and growth of plants from seed) to ensure that plants will be available in time to be used within the construction works.								
		Soiling, planting, etc-monitoring of implementation and maintenance of soiling and planting works and against potential incursion, physical damage, fire, pollution, surface erosion, etc.								
		Architectural design and treatment of all structures (where practicable), retaining walls, elevated road structures and other engineering works-implementation and maintenance of mitigation measures, to ensure conformity with agreed designs.								
		Erection of Site Hoardings/Fences-								

EIA Ref.	EM&A Ref	Environmental Protection Measures	Objectives of the Recommended Measure & Main Concerns to address	Location/Duration of Measures/Timing of Completion of Measures	Implementation Agent	Implementation Stage				Relevant Legislation Guidelines
						Des	C	O	Dec	
		Erection of site hoardings/fences during the construction phase to reduce visual impacts.								
		Establishment Works- monitoring of implementation of maintenance operations during Establishment Period.								

Remark: Des – Design; C – Construction; O – Operation; Dec – Decommissioning