

**Proposed 11kV Submarine Cables  
Replacement Connecting Liu Ko Ngam  
and Pak Sha Tau Tsui at Kat O -  
Environmental Monitoring & Audit**

*First Weekly Impact Water Quality Monitoring  
Report*

4 January 2016

*Submitted by*  
**Environmental Resources Management**  
16/F Berkshire House  
25 Westlands Road  
Quarry Bay, Hong Kong  
Telephone 2271 3000  
Facsimile 2723 5660

**Proposed 11kV Submarine Cables Replacement Connecting Liu Ko Ngam  
and Pak Sha Tau Tsui at Kat O - Environmental Monitoring & Audit  
Environmental Certification Sheet**

**EP-461/2013**

**Reference Document/Plan**

Document/ <del>Plan to be Certified</del> / Verified:	First Weekly Impact Water Quality Monitoring Report
Date of Report:	4 January 2016
Date prepared by Environmental Team:	4 January 2016
Date received by IC:	4 January 2016

**Reference Project Profile Annex E EM&A Requirement and EP Requirement**

EM&A Requirement:	Project Profile, Annex E EM&A Requirements, Section E1
Content:	<i>Water Quality Monitoring and Reporting</i>
E.1.3	“Impact Monitoring will comprise sampling two times a week during the cable installation works at the same location as the Baseline Monitoring Stations. Samples shall be taken during both mid flood and mid ebb tidal states on each sampling occasion...In case the Impact Monitoring is ceased with reasons such as the operations of the cable installation has no disturbance of seabed or the works are suspended due to safety issue or adverse weather conditions etc. for more than 1 week. The Contractor should send a confirmation letter to EPD and AFCD 1 week before the cessation of Impact Monitoring.”
E.1.5	“Schedule for impact monitoring should be submitted to EPD and AFCD at least 1 week before commencement of the monitoring works for agreement. A letter report shall be provided to EPD and AFCD that shall include the monitoring results and an interpretation of monitoring results. The monitoring data should be provided graphically to show the relationship between the Control, Gradient and Impact Stations and compliance or noncompliance with respect to the Action/Limit Levels.... An Impact Monitoring Report shall be provided within one week of completing every weekly monitoring survey for the first three impact monitoring weeks. If there are no exceedances recorded during the first three weeks, a Bi-weekly Impact Monitoring Report shall be provided within 1 week of completing every two weekly monitoring surveys.”
EP Condition:	Condition No. 2.1
Content:	<i>Water Quality Monitoring</i>
2.1	All measures described in the Project Profile (No. PP-489/2013) submitted by the applicant on 30 May 2013 shall be fully implemented.

**IC Verification**

I hereby verify that the above referenced document/ <del>plan</del> complies with the above referenced condition of EP-461/2013.	
Terence Fong, Independent Checker	Date: 4 January 2016






# Proposed 11kV Submarine Cables Replacement Connecting Liu Ko Ngam and Pak Sha Tau Tsui at Kat O - Environmental Monitoring & Audit

**Environmental Resources Management**

16/F Berkshire House  
 25 Westlands Road  
 Quarry Bay, Hong Kong  
 Telephone: (852) 2271 3000  
 Facsimile: (852) 2723 5660  
 E-mail: post.hk@erm.com  
 http://www.erm.com

## First Weekly Impact Water Quality Monitoring Report

**Document Code: 0259952\_First Weekly Impact Water Quality Monitoring Report.doc**

Client:  CLP Power Hong Kong Limited (CLP)		Project No:  0259952			
Summary:  This document presents the monitoring requirements, methodologies and results of the first weekly impact water quality measurements at the monitoring locations near the proposed 11kV submarine cables replacement connecting Liu Ko Ngam and Pak Sha Tau Tsui at Kat O.		Date: 4 January 2016			
		Approved by:    Terence Fong Partner			
v0	First Weekly Impact Water Quality Monitoring Report	YL	FZ	TF	4/1/16
Revision	Description	By	Checked	Approved	Date
<p>This report has been prepared by Environmental Resources Management the trading name of 'ERM Hong-Kong, Limited', with all reasonable skill, care and diligence within the terms of the Contract with the client, incorporating our General Terms and Conditions of Business and taking account of the resources devoted to it by agreement with the client.</p> <p>We disclaim any responsibility to the client and others in respect of any matters outside the scope of the above.</p> <p>This report is confidential to the client and we accept no responsibility of whatsoever nature to third parties to whom this report, or any part thereof, is made known. Any such party relies on the report at their own risk.</p>		<p>Distribution</p> <p><input type="checkbox"/> Internal</p> <p><input checked="" type="checkbox"/> Public</p> <p><input type="checkbox"/> Confidential</p>			
		 			



## CONTENTS

	<i>EXECUTIVE SUMMARY</i>	<i>i</i>
<b>1</b>	<b>INTRODUCTION</b>	<b>1</b>
<b>1.1</b>	<b>PURPOSE OF THE REPORT</b>	<b>1</b>
<b>1.2</b>	<b>STRUCTURE OF THE REPORT</b>	<b>1</b>
<b>2</b>	<b>PROJECT INFORMATION</b>	<b>2</b>
<b>2.1</b>	<b>BACKGROUND</b>	<b>2</b>
<b>2.2</b>	<b>MARINE CONSTRUCTION WORKS UNDERTAKEN DURING REPORTING WEEK</b>	<b>3</b>
<b>2.3</b>	<b>STATUS OF ENVIRONMENTAL APPROVAL DOCUMENTS</b>	<b>3</b>
<b>3</b>	<b>IMPACT WATER QUALITY MONITORING REQUIREMENTS</b>	<b>4</b>
<b>3.1</b>	<b>MONITORING LOCATIONS</b>	<b>4</b>
<b>3.2</b>	<b>MONITORING PARAMETERS</b>	<b>5</b>
<b>3.3</b>	<b>MONITORING EQUIPMENT AND METHODOLOGY</b>	<b>5</b>
<b>3.4</b>	<b>ACTION AND LIMIT LEVELS</b>	<b>7</b>
<b>3.5</b>	<b>EVENT AND ACTION PLAN</b>	<b>8</b>
<b>4</b>	<b>IMPACT WATER QUALITY MONITORING RESULTS</b>	<b>9</b>
<b>5</b>	<b>ENVIRONMENTAL NON-CONFORMANCES</b>	<b>10</b>
<b>5.1</b>	<b>SUMMARY OF ENVIRONMENTAL EXCEEDANCE</b>	<b>10</b>
<b>5.2</b>	<b>SUMMARY OF ENVIRONMENTAL NON-COMPLIANCE</b>	<b>10</b>
<b>5.3</b>	<b>SUMMARY OF ENVIRONMENTAL COMPLAINT</b>	<b>10</b>
<b>5.4</b>	<b>SUMMARY OF ENVIRONMENTAL SUMMONS AND PROSECUTION</b>	<b>10</b>
<b>6</b>	<b>FUTURE KEY ISSUES</b>	<b>11</b>
<b>7</b>	<b>CONCLUSIONS</b>	<b>12</b>

## LIST OF TABLES

<i>Table 2.1</i>	<i>Summary of Environmental Licensing, Notification, Permit and Reporting Status</i>
<i>Table 3.1</i>	<i>Water Quality Monitoring Stations</i>
<i>Table 3.2</i>	<i>Equipment Used during Impact Water Quality Monitoring</i>
<i>Table 3.3</i>	<i>Action and Limit Levels of Water Quality</i>
<i>Table 3.4</i>	<i>Event Action Plan for Water Quality</i>

## LIST OF FIGURES

<i>Figure 2.1</i>	<i>Alignment of the Proposed 11kV Submarine Cable Circuit from Liu Ko Ngam to Pak Sha Tau Tsui</i>
<i>Figure 3.1</i>	<i>Water Quality Monitoring Station</i>

## LIST OF ANNEXES

<i>Annex A</i>	<i>Impact Water Quality Monitoring Schedule</i>
<i>Annex B</i>	<i>Calibration Reports of Multi-parameter Sensor</i>
<i>Annex C</i>	<i>QA/QC Results for Suspended Solids Testing</i>
<i>Annex D</i>	<i>First Weekly Impact Water Quality Monitoring Results</i>

## ***EXECUTIVE SUMMARY***

The submarine cable installation works for the 11kV submarine cable connecting Liu Ko Ngam to Pak Sha Tau Tsui at Kat O commenced in the week starting 21 December 2015. This is the **First Weekly Impact Water Quality Monitoring Report** presenting results and findings of the impact water quality monitoring conducted during the week of 21 to 27 December 2015 in accordance with the *Environmental Monitoring and Audit Requirement (EM&A Requirement)*.

### Water Quality Monitoring

Two (2) monitoring events were scheduled in the reporting period, on 22 and 24 December. Monitoring events at designated monitoring stations were performed on schedule.

### Environmental Non-conformance

No exceedances of Action and Limit Levels were recorded during the reporting week.

No complaint and summons/prosecution was received during the reporting week.

Impact water quality monitoring will be carried out in parallel with the cable installation works for the week from 28 December 2015 to 3 January 2016.

# 1 INTRODUCTION

ERM-Hong Kong, Limited (ERM) was appointed by CLP Power Hong Kong Limited (CLP) as the Environmental Team (ET) to implement the Environmental Monitoring and Audit (EM&A) programme for the installation of an 11kV submarine cable connecting Liu Ko Ngam to Pak Sha Tau Tsui at Kat O (the Project).

## 1.1 PURPOSE OF THE REPORT

This is the *First Weekly Impact Water Quality Monitoring Report*, which summarises the results of impact water quality monitoring as part of the EM&A programme during the reporting period from 21 to 27 December 2015.

## 1.2 STRUCTURE OF THE REPORT

The structure of the Report is as follows:

*Section 1 : Introduction*

Provides the Project background, purpose and report structure.

*Section 2 : Project Information*

Summarises background and scope of the project, the construction works undertaken and the status of Environmental Permits/Licenses during the reporting period.

*Section 3 : Impact Water Quality Monitoring Requirements*

Summarises the monitoring parameters, monitoring programmes, monitoring methodologies, monitoring frequency, monitoring locations, Action and Limit Levels, and Event Action Plan.

*Section 4 : Impact Water Quality Monitoring Results*

Summarises the water quality monitoring results obtained in the reporting period.

*Section 5 : Environmental Non-conformance*

Summarises any monitoring exceedance, environmental complaints and environmental summons within the reporting period.

*Section 6 : Future Key Issues*

Summarises the monitoring schedule for the next reporting period.

*Section 7 : Conclusions*

Presents the key findings of the impact monitoring results.

## 2.1 BACKGROUND

CLP Power Hong Kong Limited (CLP) proposes to enhance the security of power supply to Kat O Island. At present, there is only one set of 11kV submarine cable connecting Liu Ko Ngam to Pak Sha Tau Tsui at Kat O for power supply. The existing 11kV submarine cable is however more than 30 years old and deteriorating, thus potentially limiting the continuous supply of electricity in the future. CLP therefore proposes to replace the existing 11kV submarine cable connecting Liu Ko Ngam to Pak Sha Tau Tsui at Kat O to ensure the continuous power supply for Kat O. The Project involves the installation of an 11kV cable circuit consisting of two individual cables, with an intended burial depth up to 5 m for the submarine cable section and about 1 m for the land section. The two submarine cables (except the shore end sections which will be at only about 1 m separation and joining into a single cable trench at each landing site) will be 30 m away from each other and running parallel along the alignment. In areas (especially near the landing site) where the cable burial depth does not meet the requirements due to seabed geotechnical constraints, a protective cover such as a concrete slab will be adopted. The total length of the proposed cable alignment is approximately 880 m. A map showing the proposed submarine cable route is presented in *Figure 2.1*.

A *Project Profile* (Register No. PP-489/2013, *Replacement of the Existing 11kV Submarine Cable Circuit Connecting Liu Ko Ngam and Pak Sha Tau Tsui at Kat O*) which includes an assessment of the potential environmental impacts associated with the installation of the submarine cables was prepared and submitted to the Environmental Protection Department (EPD) according to *Section 5(11) of the Environmental Impact Assessment Ordinance (EIAO)* for the application for Permission to apply directly for *Environmental Permit (EP)*. On 11 July 2013 EPD approved the *Project Profile (PP)* and a direct application for *EP* was submitted on 23 July 2013 (Application No. AEP-461/2013). On 27 August 2013 EPD granted an environmental permit for the Project (EP - 461/2013) pursuant to *Section 10 of EIAO*.

Pursuant to *Condition 2.1 of the EP, Water Quality Sampling*, as set out in the approved *PP Annex E Environmental Monitoring & Audit (EM&A) Requirements* (henceforth "*EM&A Requirement*"), is required for this Project. Water Quality Sampling shall be conducted prior to and throughout the cable installation works, and after its completion as set out in the *EM&A Requirement*.

Baseline water quality monitoring was conducted prior to the installation works and results were summarised in the *Baseline Water Quality Monitoring Report* of November 2015.

Impact monitoring started on 22 December 2015, when the cable installation works commenced. Impact monitoring was conducted twice a week during



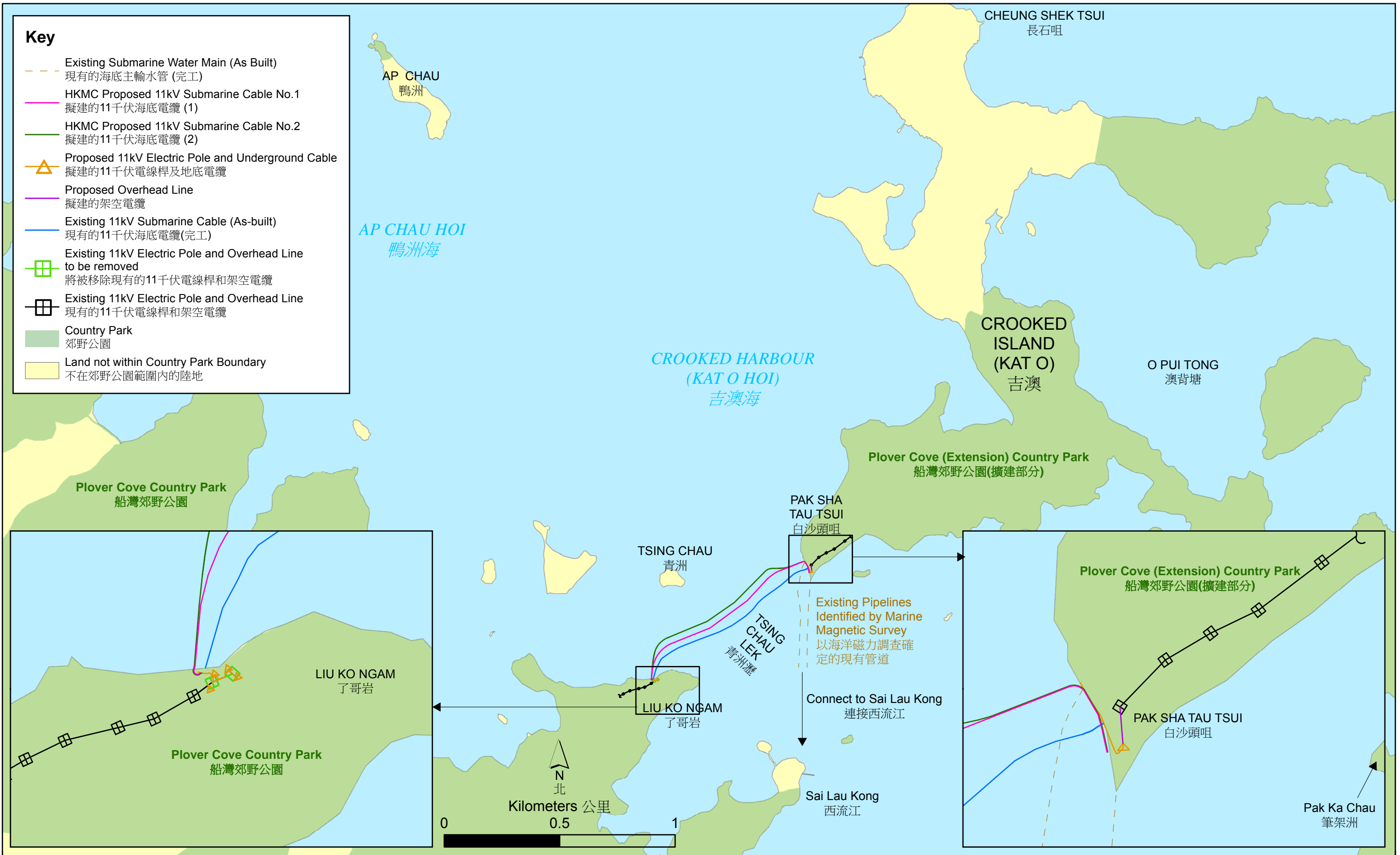


Figure 2.1  
圖 2.1

Alignment of the Proposed 11kV Submarine Cable Circuit from Liu Ko Ngam to Pak Sha Tau Tsui  
了哥岩至白沙頭咀的擬建11kV海底電纜路線

cable installation works. The impact water quality monitoring was used to reflect the water quality conditions and to identify potential water quality impacts during the cable installation works. This *First Weekly Impact Monitoring Report* (the “Report”) therefore presents the results and findings for the first week impact monitoring, conducted on 22 and 24 December 2015, at the same location as the baseline monitoring stations.

## 2.2 *MARINE CONSTRUCTION WORKS UNDERTAKEN DURING REPORTING WEEK*

During the reporting period of the week from 21 to 27 December 2015, Project shore-end marine works proceeded at Pak Sha Tau Tsui, with no works taking place on the public holidays (25 and 26 December 2015).

## 2.3 *STATUS OF ENVIRONMENTAL APPROVAL DOCUMENTS*

A summary of the relevant permits, licences and reports on marine water quality for this Project is presented in *Table 2.1*.

**Table 2.1** *Summary of Environmental Licensing, Notification, Permit and Reporting Status*

<b>Permit / Licence / Notification / Report</b>	<b>Reference</b>	<b>Validity Period</b>	<b>Remarks</b>
Project Profile	PP-489/2013	Throughout the construction and operation stages	Submitted on 30 May 2013
Environmental Permit	EP-461/2013	Throughout the construction and operation stages	Granted on 27 August 2013
Baseline Water Quality Monitoring Report	-	Throughout the construction period	Submitted on 20 November 2015

### 3.1 MONITORING LOCATIONS

In accordance with the *EM&A Requirement*, water quality monitoring samples were collected at the ten (10) stations situated around the cable installation works, following commencement of Project marine installation works. The locations of the sampling stations are shown in *Figure 3.1*.

- C1 is a Control Station to the north of the cable alignment (approximately 1.4 km away) with the same coordinates as EPD routine monitoring station MM2, which is not supposed to be influenced by the construction works due to its remoteness to the Project works area;
- C2 is a Control Station to the south of the cable alignment (over a distance of 1.6 km) with the same coordinates as EPD routine monitoring station MM7, which is not supposed to be influenced by the construction works due to its remoteness to the Project site;
- SR1 is Impact Station used to monitor the effect of the cable installation works on coral communities of high ecological concern at Tsing Chau;
- SR2 is Impact Station used to monitor the effect of the cable installation works on coral communities of high ecological concern at Ngau Shi Wu Wan;
- SR3 is Impact Station used to monitor the effect of the cable installation works on Lai Chi Wo/ Yan Chau Tong Marine Park (to the west of the Project site);
- SR4 is Impact Station used to monitor the effect of the cable installation works on Yan Chau Tong Marine Park (to the south of the Project site);
- SR5 is Impact Station used to monitor the effect of the cable installation works on Sai Lau Kong FCZ;
- G1 is regarded as a Gradient Station in between Impact Station SR1 and the construction work alignment;
- G2 is Gradient Station located between Impact Stations SR2, SR4 and SR5 and construction work alignment; and
- G3 is Gradient Station located between Impact Stations SR3 and the construction work alignment and landing point at Kiu Ko Ngam.

The co-ordinates of the above monitoring stations are listed in *Table 3.1*.

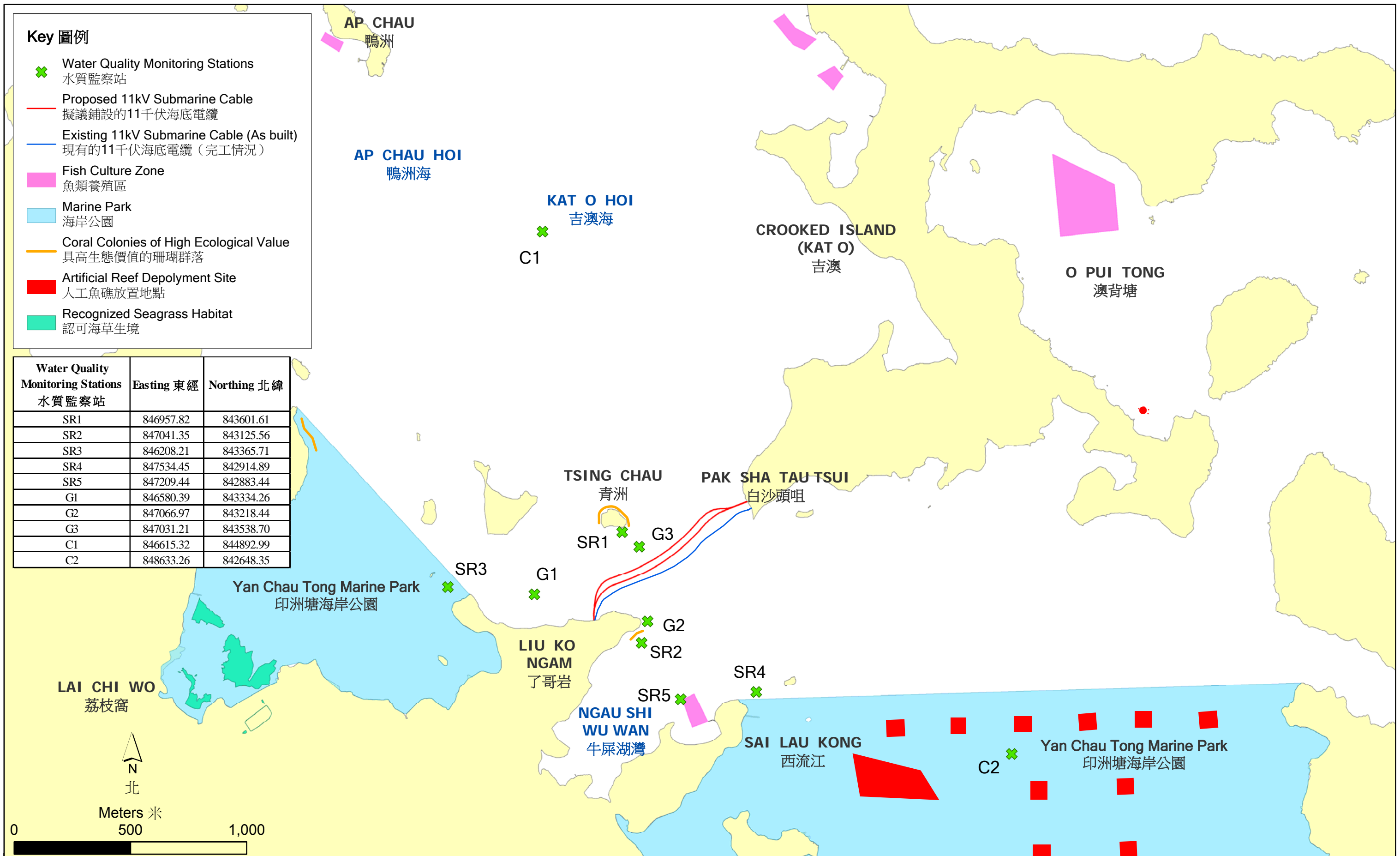


Figure 3.1  
圖 3.1

Water Quality Monitoring Stations

水質監察站

**Table 3.1** *Water Quality Monitoring Stations*

<b>Station</b>	<b>Nature</b>	<b>Easting</b>	<b>Northing</b>
C1	Control Station	846615.32	844892.99
C2	Control Station	848633.26	842648.35
SR1	Impact Station	846957.82	843601.61
SR2	Impact Station	847041.35	843125.56
SR3	Impact Station	846208.21	843365.71
SR4	Impact Station	847534.45	842914.89
SR5	Impact Station	847209.44	842883.44
G1	Gradient Station	846580.39	843334.26
G2	Gradient Station	847025.97	843218.44
G3	Gradient Station	847031.21	843538.70

### 3.2 *MONITORING PARAMETERS*

The first week impact water quality monitoring was conducted in accordance with the requirements stated in the *EM&A Requirement*. Monitoring parameters are presented below.

The parameters measured *in situ* were:

- Dissolved Oxygen (DO) (% saturation and mg/L)
- Water temperature (°C)
- Turbidity (Nephelometric Turbidity Units [NTU])
- Salinity (parts per thousand [ppt])

The only parameter to be measured in the laboratory was:

- Suspended solids (SS) (mg/L)

In addition to the water quality parameters, other relevant data were also measured and recorded in field logs, including the location of the sampling stations, water depth, sampling depth, current velocity and direction, time, weather conditions, sea conditions (where appropriate), tidal state (where appropriate), special phenomena and work activities undertaken around the monitoring and Works area that may have influenced the monitoring results.

These parameters will be monitored at all designated marine water quality monitoring stations throughout the whole impact monitoring phase.

### 3.3 *MONITORING EQUIPMENT AND METHODOLOGY*

#### 3.3.1 *Monitoring Equipment*

*Table 3.2* summaries the equipment used for the impact water quality monitoring.

**Table 3.2** *Equipment Used during Impact Water Quality Monitoring*

<b>Equipment</b>	<b>Model</b>
Global Positioning Device	GARMIN eTrex 10
Water Depth Gauge	Speedtech Instruments SM-5
Water Sampling Equipment	Wildlife Kemmerer 1520
Salinity, DO, Temperature Measuring Meter	YSI PRO 2030
Current Velocity and Direction	Global Water FP111
Turbidity Meter	HACH 2100Q

### 3.3.2 *Monitoring Frequency and Timing*

The water quality monitoring was carried out on two occasions (days) and the intervals between the two sets of monitoring were not less than 36 hours. The water quality sampling was undertaken within a 3 hour window of 1.5 hours before and 1.5 hours after mid flood and mid-ebb tides. The tidal range selected for the baseline monitoring was at least 0.5 m for both flood and ebb tides as far as practicable.

Reference were made to the predicted tides at Ko Lau Wan, which is the tidal station nearest to the Project Site, published on the website of the Hong Kong Observatory <sup>(1)</sup>. Based on the predicted tidal levels at Ko Lau Wan, the first week water quality monitoring was conducted on 22 and 24 December 2015, following the schedule presented in *Annex A*.

### 3.3.3 *Sampling/Testing Protocol*

All *in situ* monitoring instruments were checked, calibrated and certified by a laboratory accredited under HOKLAS or any other international accreditation scheme before use (see calibration reports in *Annex B*), and subsequently will be re-calibrated at monthly intervals throughout all stages of the water quality monitoring. Responses of sensors and electrodes were checked with certified standard solutions before each use.

For the on-site calibration of field equipment, the *BS 1427: 1993, Guide to Field and On-Site Test Methods for the Analysis of Waters* was observed. Sufficient stocks of spare parts were maintained for replacements when necessary. Backup monitoring equipment was made available.

Water samples for SS measurements were collected in high density polythene bottles, packed in ice (cooled to 4° C without being frozen), and delivered to a HOKLAS laboratory as soon as possible after collection.

At each measurement / sampling depth, two (2) consecutive *in-situ* measurements (DO concentration and saturation, temperature, turbidity, and salinity) and two water samples for SS were taken for lab analysis.

<sup>(1)</sup> Hong Kong Observatory (2015) <http://www.hko.gov.hk/tide/eQUBtide.htm> [Accessed in December 2015]

### 3.3.4 *Laboratory Analysis*

All laboratory work was carried out in a HOKLAS accredited laboratory. Water samples of about 1,000 mL were collected at the monitoring and control stations for carrying out the laboratory determinations. The determination work started within the next working day after collection of the water samples. The SS laboratory measurements were provided within two (2) days of the sampling event (i.e. within 48 hours). The analyses followed the standard methods as described in APHA Standard Methods for the *Examination of Water and Wastewater*, 19th Edition, unless otherwise specified (APHA 2540D for SS).

The QA/QC details were in accordance with requirements of HOKLAS or another internationally accredited scheme (*Annex C*)

### 3.3.5 *Sampling Depths & Replication*

Each station was sampled and measurements/ water samples were taken at three depths, namely, 1 m below water surface, mid-depth and 1 m above sea bed, except where the water depth less than 6 m, the mid-depth station may be omitted. For stations that are less than 3 m in depth, only the mid-depth sample was taken.

For *in situ* measurements, duplicate readings were made at each water depth at each station. Duplicate water samples were collected at each water depth at each station.

## 3.4 *ACTION AND LIMIT LEVELS*

The Action and Limit levels which were established based on the results of *Baseline Water Quality Monitoring*, are presented in *Table 3.3*.

**Table 3.3** *Action and Limit Levels of Water Quality*

<b>Parameter</b>	<b>Action Level</b>	<b>Limit Level</b>
DO in mg/L <sup>a</sup>	<u>Surface and Middle</u> 5%-ile of baseline data for surface and middle layer (4.85 mg/L), and 20% exceedance of value at any impact station compared with corresponding data from control stations  <u>Bottom</u> 5%-ile of baseline data for bottom layers (4.72 mg/L), and 20% exceedance of value at any impact station compared with corresponding data from control stations	<u>Surface and Middle</u> 1%-ile of baseline for surface and middle layer (4.57 mg/L)  <u>Bottom</u> 1%-ile of baseline data for bottom layer (4.46 mg/L)

Parameter	Action Level	Limit Level
SS in mg/L (Depth-averaged b) c	95%-ile of baseline data (5.40 mg/L) and 20% exceedance of value at any impact station compared with corresponding data from control stations	99%-ile of baseline data (5.71 mg/L) and 30% exceedance of value at any impact station compared with corresponding data from control stations
Turbidity in NTU (Depth-averaged a) c	95%-ile of baseline data (4.92 NTU) and 20% exceedance of value at any impact station compared with corresponding data from control stations	99%-ile of baseline data (5.11 NUT) and 30% exceedance of value at any impact station compared with corresponding data from control stations

**Notes:**

- For DO, non-compliance of the water quality limits occurs when monitoring result is lower than the limits.
- “Depth-averaged” is calculated by taking the arithmetic means of reading of all three depths (at 1 metre below surface, mid-depth and 1 metre above seabed for the definition of sampling water depth).
- For SS and turbidity, non-compliance of the water quality limits occurs when monitoring result is higher than the limits.

### 3.5

#### EVENT AND ACTION PLAN

The Event and Action Plan for water quality monitoring which was stipulated in *EM&A Requirement* is presented in *Table 3.4*.

**Table 3.4** *Event Action Plan for Water Quality*

Event	Contractor
Action Level Exceedance	<p><b>Step 1</b> - repeat sampling event to confirm findings.</p> <p><b>Step 2</b> - if findings are confirmed, discuss with cable installation contractor the most appropriate method of reducing suspended solids during cable installation (e.g. reduce cable laying speed/ volume of water used during installation, increase effectiveness of silt curtain).</p> <p><b>Step 3</b> - repeat measurements after implementation of mitigation for confirmation of compliance.</p> <p><b>Step 4</b> - if non-compliance continues - increase measures in Step 2 and repeat measurements in Step 3. If non-compliance occurs at a third time, the cable laying operations should be suspended.</p>
Limit Level Exceedance	<p>Inform EPD and AFCD and confirm notification of the non-compliance in writing within 24 hours after a limit level exceedance is recorded.</p> <p>Undertake <b>Steps 1-3</b> immediately, if further non-compliance continues at the Limit Level, suspend cable laying operations until an effective solution is identified.</p>



A total of two (2) monitoring events (days) were scheduled in the reporting period of the week from 21 to 27 December 2015 (*Annex A*). In each monitoring day (22 and 24 December 2015), two rounds of water quality measurement and sampling were undertaken, at mid-ebb and mid-flood tidal stage respectively. Monitoring events at all designated monitoring stations were performed on schedule. No major activities that might influence the water quality were identified during the reporting period, except potentially the cable installation works.

The results of the impact monitoring and their graphical presentations are included in *Annex D*. No exceedances of Action and Limit Levels were recorded. The monitoring results of Turbidity, SS and DO are discussed together as follows.

The overall levels of DO at all the water depths (surface, mid-depth and bottom) during the first week impact monitoring were similar at all the stations (*Figure D1-D3 of Annex D*). DO levels of each water depth at each monitoring station stayed at a similar level throughout the reporting period.

Depth-averaged Turbidity levels recorded during the first week impact monitoring are shown in *Figure D4 of Annex D*. Turbidity levels at each monitoring station stayed at a similar level throughout the monitoring period. The differences of Turbidity levels among the stations were within a limited range of 1 NTU.

Levels of depth-averaged SS measured during the first week impact monitoring showed a minor decreasing trend over time (*Figure D5 of Annex D*). Differences among the stations were recorded although no exceedances of Action and Limit Levels were observed. In general, SS levels were recorded at low concentrations, ranging from 1 mg/L to 3 mg/L.

In general, the water quality was stable throughout each sampling day. The overall Turbidity, SS and DO levels at the impact stations were similar to the measurements at the control stations which are located far from the area of cable installation works and are not expected to be affected by the cable installation works.

5 *ENVIRONMENTAL NON-CONFORMANCES*

5.1 *SUMMARY OF ENVIRONMENTAL EXCEEDANCE*

No exceedances of the Action and Limit Levels were recorded during the reporting period.

5.2 *SUMMARY OF ENVIRONMENTAL NON-COMPLIANCE*

No non-compliance events were recorded during the reporting period.

5.3 *SUMMARY OF ENVIRONMENTAL COMPLAINT*

No complaints were received during the reporting period.

5.4 *SUMMARY OF ENVIRONMENTAL SUMMONS AND PROSECUTION*

No summons or prosecution on environmental matters were received during the reporting period.

In the week from 28 December 2015 to 3 January, the cable installation works continue, with no works carried out on the public holiday(s). Impact water quality monitoring will be carried out in parallel with the cable installation works.

This *First Weekly Impact Monitoring Report* presents the results and findings of impact water quality monitoring undertaken during the period of the week from 21 to 27 December 2015 in accordance with the *EM&A Requirement* and the requirements under Environmental Permit (*EP - 461/2013*) for the Project.

No exceedances of Action and Limit Levels were recorded during the impact water quality monitoring period. No complaints or summons/prosecutions were received either during the reporting period.

Water quality was generally stable throughout the reporting period. SS and DO levels were generally similar among the sampling stations. Levels of Turbidity showed a minor decreasing trend over time.

In general, the overall water quality at the impact stations was found to be similar to that at the control stations. It is concluded that there was no deterioration of water quality during the reporting period and hence the effect of the Project cable installation works on water quality is considered to be negligible over this reporting period.

Annex A

## Impact Water Quality Monitoring Schedule

**Replacement of the Existing 11 KV Submarine Cable Circuit Connecting  
Liu Ko Ngam and Pak Sha Tau at Kat O  
Impact Marine Water Quality Monitoring (WQM) Schedule**

Sunday	Monday	Tuesday	Wednesday	Thursday	Friday	Saturday
20-Dec	21-Dec	22-Dec	23-Dec	24-Dec	25-Dec	26-Dec
		<b>WQM</b> Mid-Ebb 9:19 (07:34 - 11:04) Mid-Flood 15:29 (13:44 - 17:14)		<b>WQM</b> Mid-Ebb 11:13 (09:28 - 12:58) Mid-Flood 17:10 (15:25 - 18:55)		
27-Dec	28-Dec	29-Dec	30-Dec	31-Dec	01-Jan	02-Jan
		<b>WQM</b> Mid-Flood 9:14 (07:29 - 10:59) Mid-Ebb 14:31 (12:46 - 16:16)		<b>WQM</b> Mid-Flood 10:44 (08:59 - 12:29) Mid-Ebb 16:12 (14:27 - 17:57)		
03-Jan	04-Jan	05-Jan	06-Jan	07-Jan	08-Jan	09-Jan
			<b>WQM</b> Mid-Ebb 9:36 (07:12 - 10:42) Mid-Flood 15:05 (13:20 - 16:50)		<b>WQM</b> Mid-Ebb 11:09 (09:24 - 12:54) Mid-Flood 16:35 (14:50 - 18:20)	
10-Jan	11-Jan	12-Jan	13-Jan	14-Jan	15-Jan	16-Jan
			<b>WQM</b> Mid-Flood 8:57 (08:19 - 11:49) Mid-Ebb 14:38 (12:53 - 16:23)		<b>WQM</b> Mid-Flood 10:27 (08:42 - 12:12) Mid-Ebb 16:25 (14:40 - 18:10)	
17-Jan	18-Jan	19-Jan	20-Jan	21-Jan	22-Jan	23-Jan
			<b>WQM</b> Mid-Ebb 8:58 (07:13 - 10:43) Mid-Flood 15:00 (13:15 - 16:45)		<b>WQM</b> Mid-Ebb 11:00 (09:15 - 12:45) Mid-Flood 16:52 (15:07 - 18:37)	
24-Jan	25-Jan	26-Jan	27-Jan	28-Jan	29-Jan	30-Jan
			<b>WQM</b> Mid-Flood 8:45 (07:00 - 10:30) Mid-Ebb 14:19 (12:34 - 16:04)		<b>WQM</b> Mid-Flood 9:55 (08:10 - 11:40) Mid-Ebb 15:41 (13:56 - 17:26)	
31-Jan	01-Feb	02-Feb	03-Feb	04-Feb	05-Feb	06-Feb
	<b>WQM</b> Mid-Flood 11:47 (10:02 - 13:32) Mid-Ebb 18:14 (16:29 - 19:59)				<b>WQM</b> Mid-Ebb 10:39 (08:54 - 12:24) Mid-Flood 14:53 (13:08 - 16:38)	

Annex B

## Calibration Reports of Multi-parameter Sensor



### Internal Calibration Report of Dissolved Oxygen Meter

Equipment Ref. No. : <u>ET/EW/008/006</u>	Manufacturer : <u>YSI</u>
Model No. : <u>Pro 2030</u>	Serial No. : <u>12A 100554</u>
Date of Calibration : <u>19/12/2015</u>	Calibration Due Date : <u>18/01/2016</u>

**Temperature Verification**

Ref. No. of Reference Thermometer : ET/0521/020  
 Ref. No. of Water Bath : ---

Reference Thermometer reading	Temperature (°C)		
	Measured	19.7	Corrected
DO Meter reading	Measured	20	Difference
			0.4

**Standardization of sodium thiosulphate ( $Na_2S_2O_3$ ) solution**

Reagent No. of $Na_2S_2O_3$ titrant	<u>CPE/012/4.5/001/13</u>	Reagent No. of 0.025N $K_2Cr_2O_7$	<u>CPE/012/4.4/002/05</u>
		Trial 1	Trial 2
Initial Vol. of $Na_2S_2O_3$ (ml)		0.00	10.20
Final Vol. of $Na_2S_2O_3$ (ml)		10.20	20.50
Vol. of $Na_2S_2O_3$ used (ml)		10.20	10.30
Normality of $Na_2S_2O_3$ solution (N)		0.02451	0.02427
Average Normality (N) of $Na_2S_2O_3$ solution (N)		0.02439	
Acceptance criteria, Deviation		Less than $\pm 0.001N$	

Calculation: Normality of  $Na_2S_2O_3$ ,  $N = 0.25 / ml Na_2S_2O_3$  used

**Lineality Checking**

**Determination of dissolved oxygen content by Winkler Titration \***

Purging Time (min)	2		5		10	
	1	2	1	2	1	2
Initial Vol. of $Na_2S_2O_3$ (ml)	0.00	11.10	22.00	0.00	6.80	10.40
Final Vol. of $Na_2S_2O_3$ (ml)	11.10	22.00	28.80	6.80	10.40	14.00
Vol. (V) of $Na_2S_2O_3$ used (ml)	11.10	10.90	6.80	6.80	3.60	3.60
Dissolved Oxygen (DO), mg/L	7.27	7.14	4.45	4.45	2.36	2.36
Acceptance criteria, Deviation	Less than + 0.3mg/L		Less than + 0.3mg/L		Less than + 0.3mg/L	

Calculation:  $DO (mg/L) = V \times N \times 8000/298$

Purging time, min	DO meter reading, mg/L			Winkler Titration result *, mg/L			Difference (%) of DO Content
	1	2	Average	1	2	Average	
2	7.31	7.41	7.36	7.27	7.14	7.21	2.06
5	4.23	4.31	4.27	4.45	4.45	4.45	4.13
10	2.25	2.31	2.28	2.36	2.36	2.36	3.45
Linear regression coefficient				0.9980			







## Performance Check of Salinity Meter

Equipment Ref. No. : ET/EW/008/006      Manufacturer : YSI  
Model No. : Pro 2030      Serial No. : 12A 100554  
Date of Calibration : 19/12/2015      Due Date : 18/01/2016

Ref. No. of Salinity Standard used (30ppt)

S/001/5

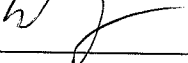
Salinity Standard (ppt)	Measured Salinity (ppt)	Difference %
30.0	30.6	2.00

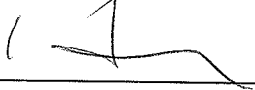
(\*) Difference (%) = (Measured Salinity – Salinity Standard value) / Salinity Standard value x 100

Acceptance Criteria

Difference : -10 % to 10 %

The salinity meter complies \* / ~~does not comply~~ \* with the specified requirements and is deemed acceptable \* / ~~unacceptable~~ \* for use. Measurements are traceable to national standards.

Checked by : 

Approved by : 



## Performance Check of Turbidity Meter

Equipment Ref. No. : ET/0505/011 Manufacturer : HACH  
Model No. : 2100Q Serial No. : 12060 C 018534  
Date of Calibration : 19/12/2015 Due Date : 18/01/2015


Theoretical Value of Turbidity Standard (NTU)	Measured Value (NTU)	Difference % *
20	19.7	-1.5
100	96.4	-3.6
800	782	-2.25


(\*) Difference = (Measured Value – Theoretical Value) / Theoretical Value x 100

Acceptance Criteria

Difference : -5 % to 5 %

The turbidity meter complies \* / ~~does not comply~~ \* with the specified requirements and is deemed acceptable \* / ~~unacceptable~~ \* for use. Measurements are traceable to national standards.

Prepared by : 

Checked by : 

Annex C

## QA/QC Results for Suspended Solids Testing



**QA/QC Results of Laboratory Analysis of Total Suspended Solids**

Sampling Date	QC Sample	Sample Duplicate		Sample Spike	
	% Recovery *	Sample ID	% Error #	Sample ID	% Recovery @
12/22/2015	97.4	FC1-S1	3.64	FG3-B2	94.8
	96.5	FSR2-M1	0.00	FSR3-M2	93.6
	95.9	FSR3-B1	4.44	FC2 -B2	107.1
	98.6	EC1-S1	3.77	EG3-B2	97.2
	98.9	ESR2-M1	4.44	ESR3-M2	94.5
	107.0	ESR3-B1	3.92	EC2-B2	108.0

Note: (\*) % Recovery of QC sample should be between 85.5% to 113.5%.  
 (#) % Error of Sample Duplicate should be between 0% to 10%.  
 (@) % Recovery of Sample Spike should be between 80% to 120%.  
 (\*\*) % Error of Sample Duplicate >10% but invalid due to sample results less than PQL (2.0 mg/L).

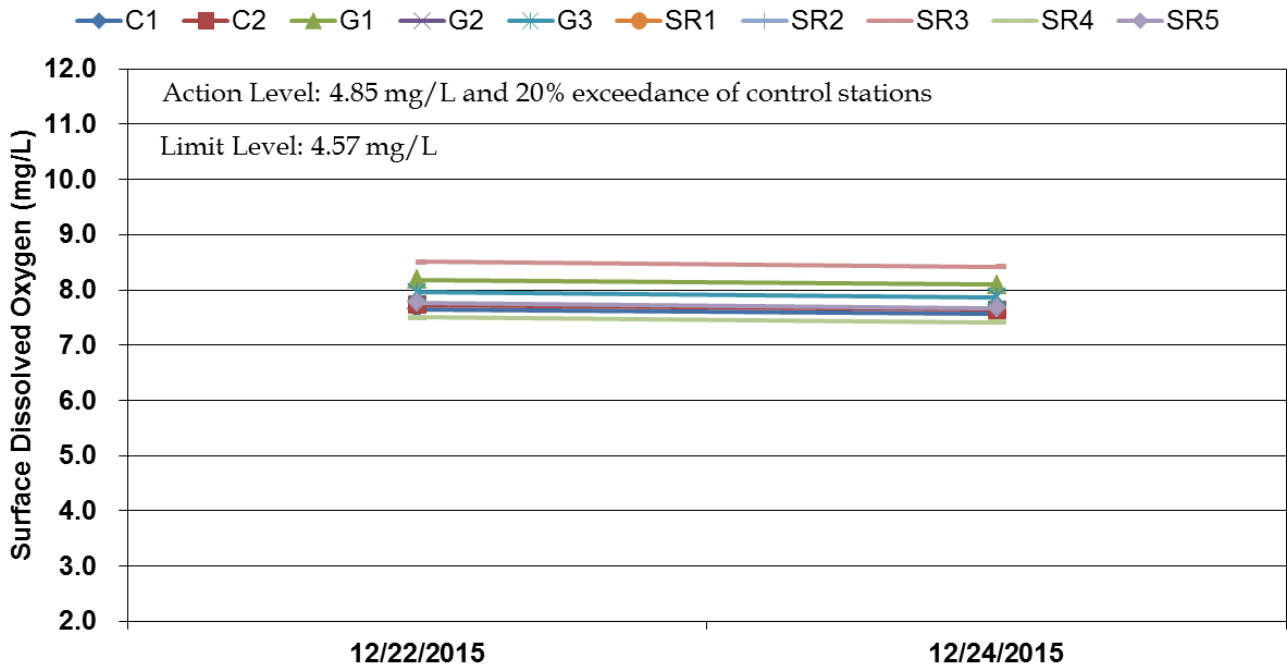
Sampling Date	QC Sample	Sample Duplicate		Sample Spike	
	% Recovery *	Sample ID	% Error #	Sample ID	% Recovery @
12/24/2015	101.8	FC1-S1	8.22	FSR3-M2	107.1
	95.0	FSR3-B1	7.41	FG1-B2	92.9
	94.1	FG2-M1	8.00	FG3-B2	97.6
	95.0	EC1-S1	8.77	ESR3-M2	103.8
	95.5	ESR3-B1	3.92	EG1-B2	96.9
	104.8	EG2-M1	1.68	EG3-B2	100.3

Note: (\*) % Recovery of QC sample should be between 85.5% to 113.5%.  
 (#) % Error of Sample Duplicate should be between 0% to 10%.  
 (@) % Recovery of Sample Spike should be between 80% to 120%.  
 (\*\*) % Error of Sample Duplicate >10% but invalid due to sample results less than PQL (2.0 mg/L).

Annex D

## First Weekly Water Quality Monitoring Results

### Mid-ebb Dissolved Oxygen (Surface)



### Mid-flood Dissolved Oxygen (Surface)

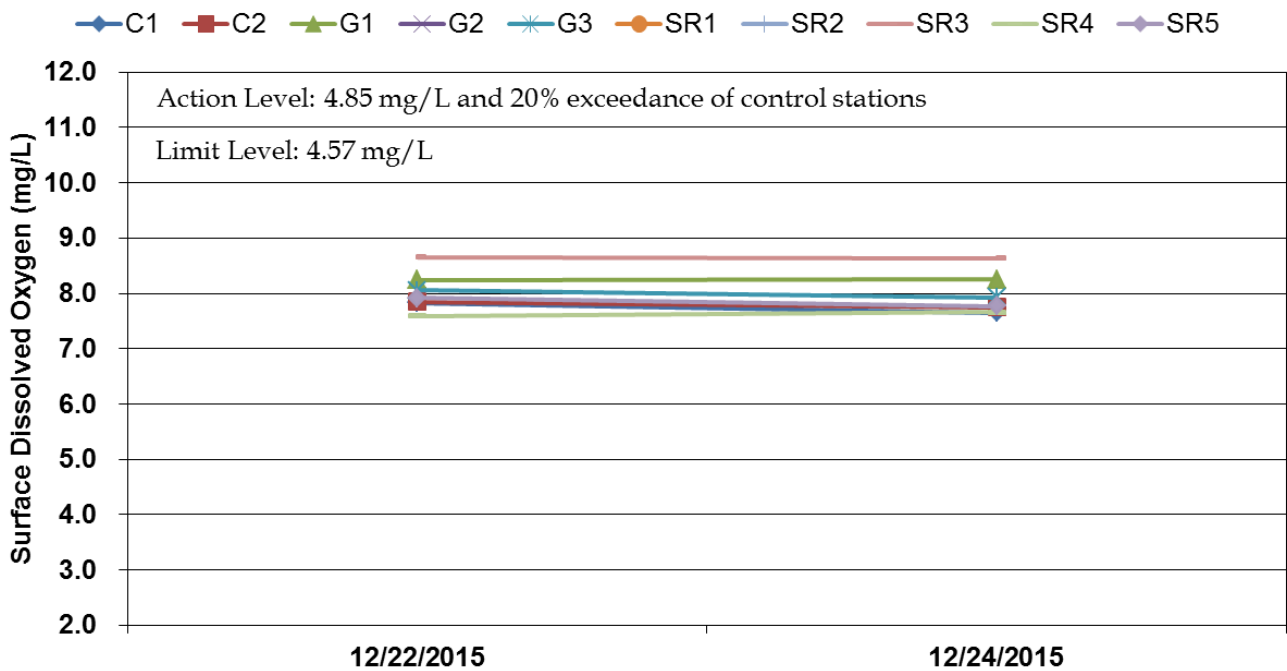
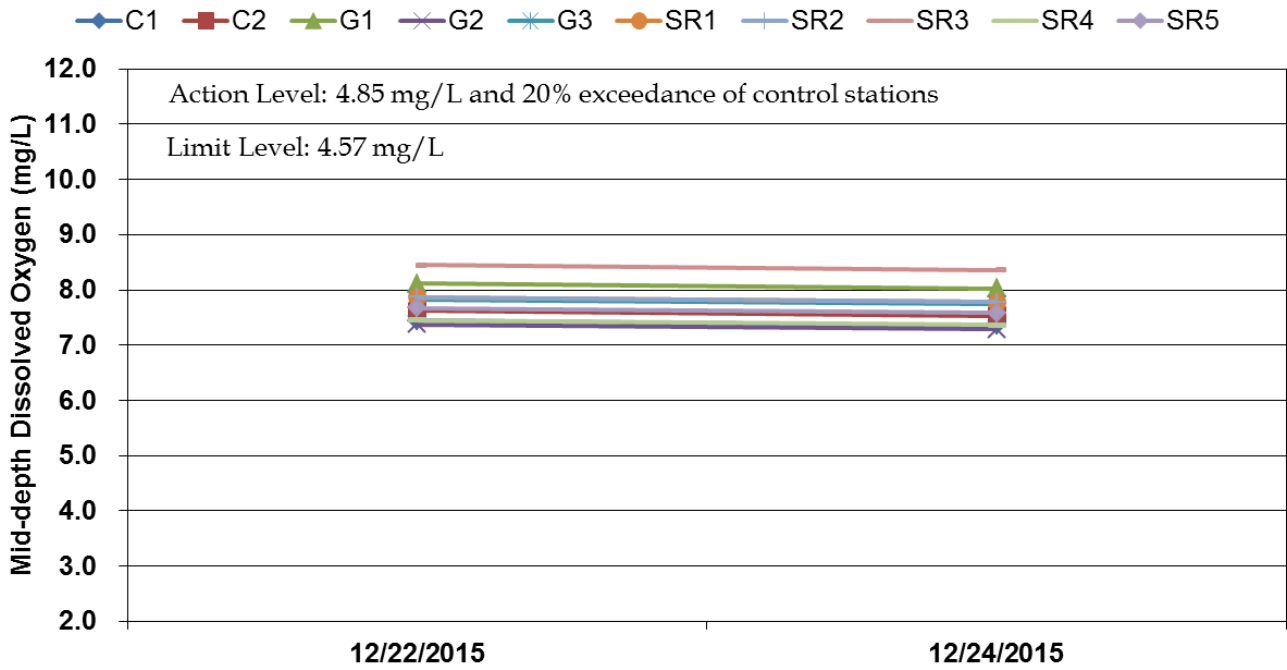


Figure D1 Dissolved oxygen (mg/L) at surface of water column measured during the first weekly impact monitoring period (week of 21-27 December 2015)



### Mid-ebb Dissolved Oxygen (Mid-depth)



### Mid-flood Dissolved Oxygen (Mid-depth)

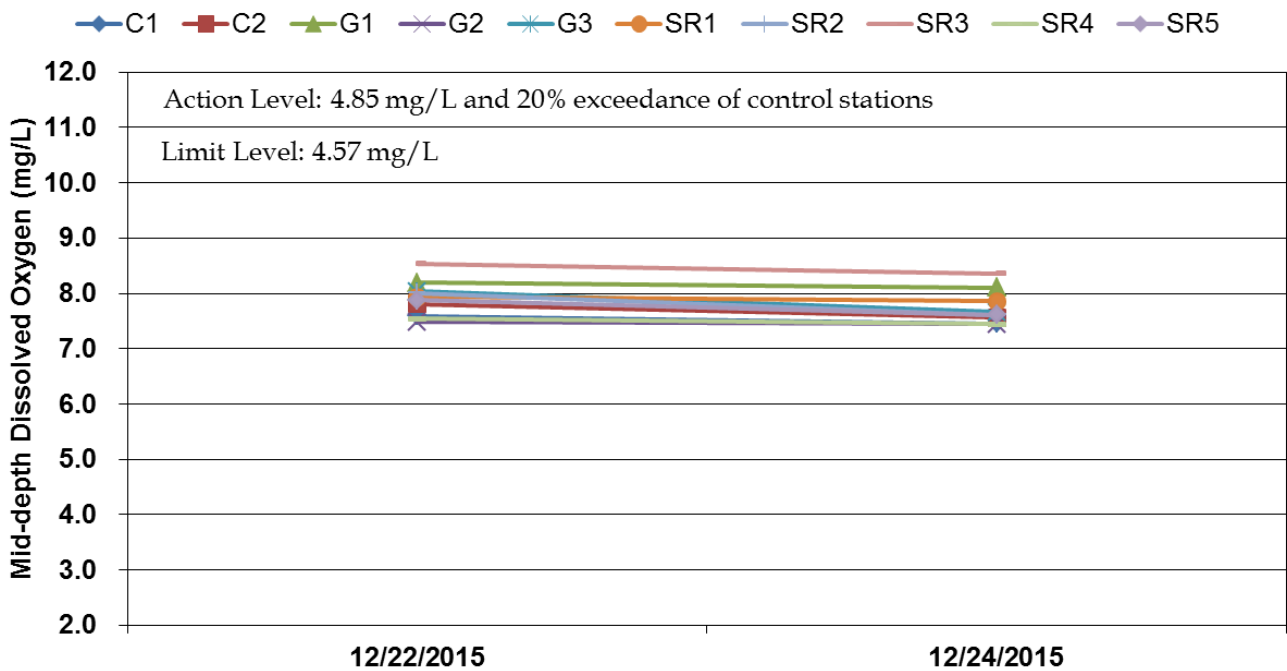
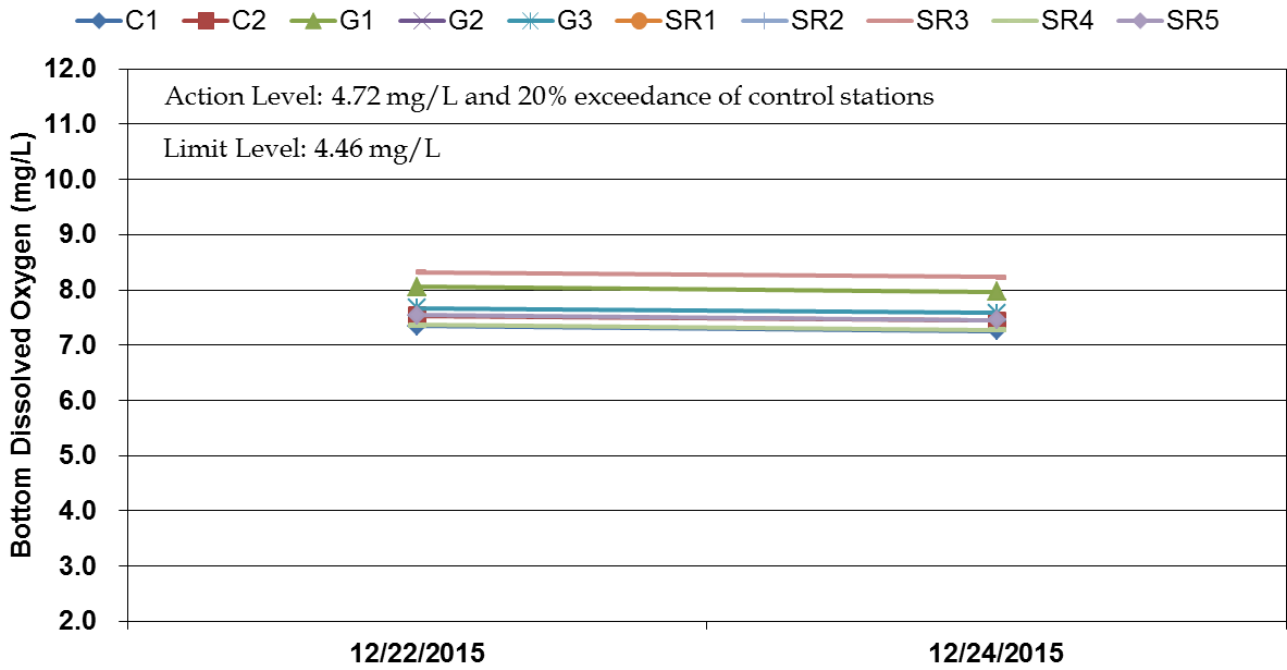


Figure D2 Dissolved oxygen (mg/L) at mid-depth of water column measured during the first weekly impact monitoring period (week of 21-27 December 2015)





### Mid-ebb Dissolved Oxygen (Bottom)



### Mid-flood Dissolved Oxygen (Bottom)

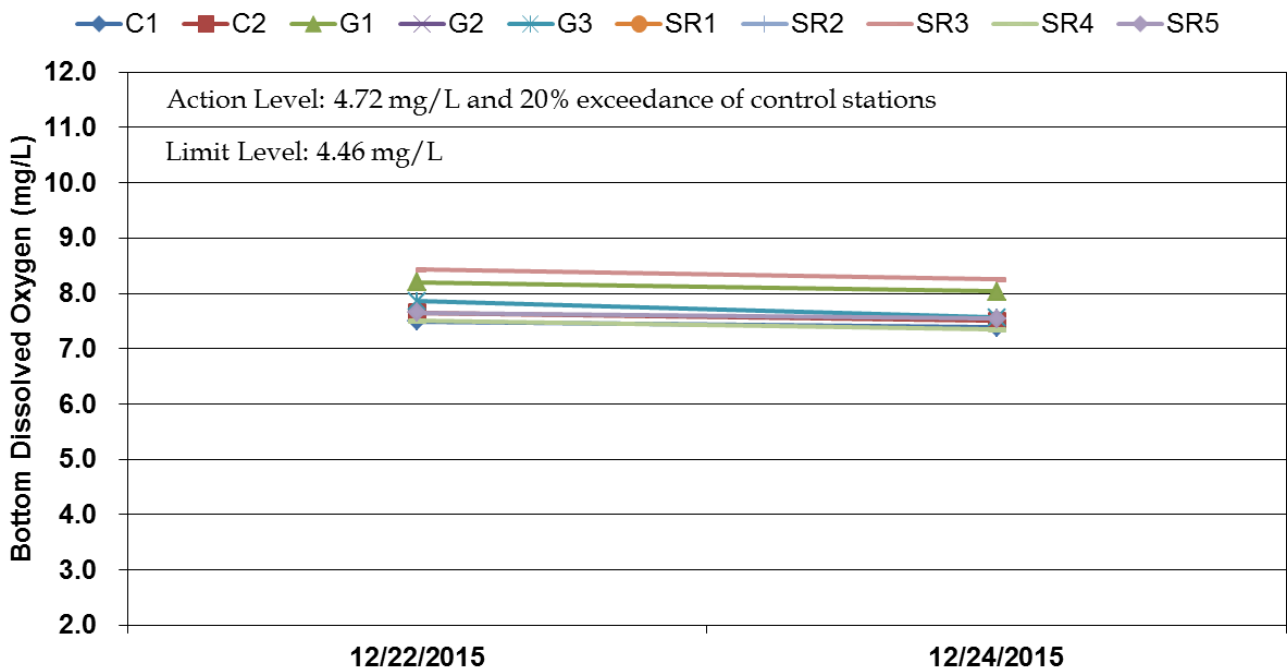
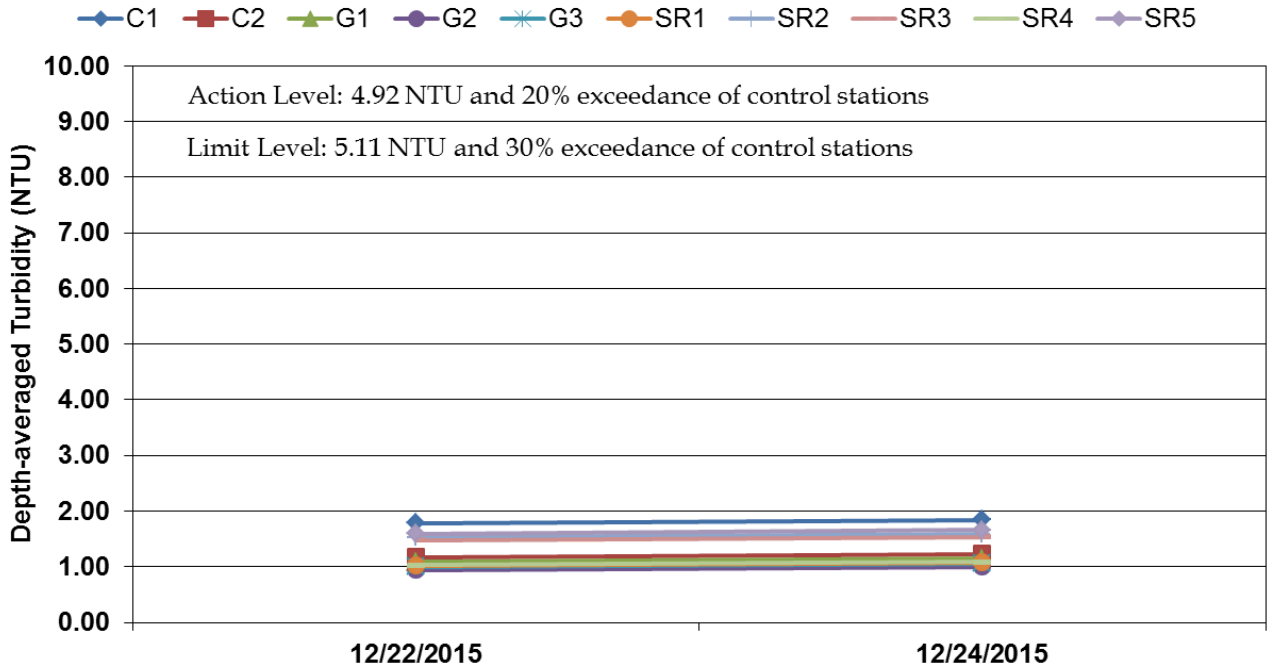


Figure D3 Dissolved oxygen (mg/L) at bottom of water column measured during the first weekly impact monitoring period (week of 21-27 December 2015)



### Mid-ebb Turbidity (Depth-averaged)



### Mid-flood Turbidity (Depth-averaged)

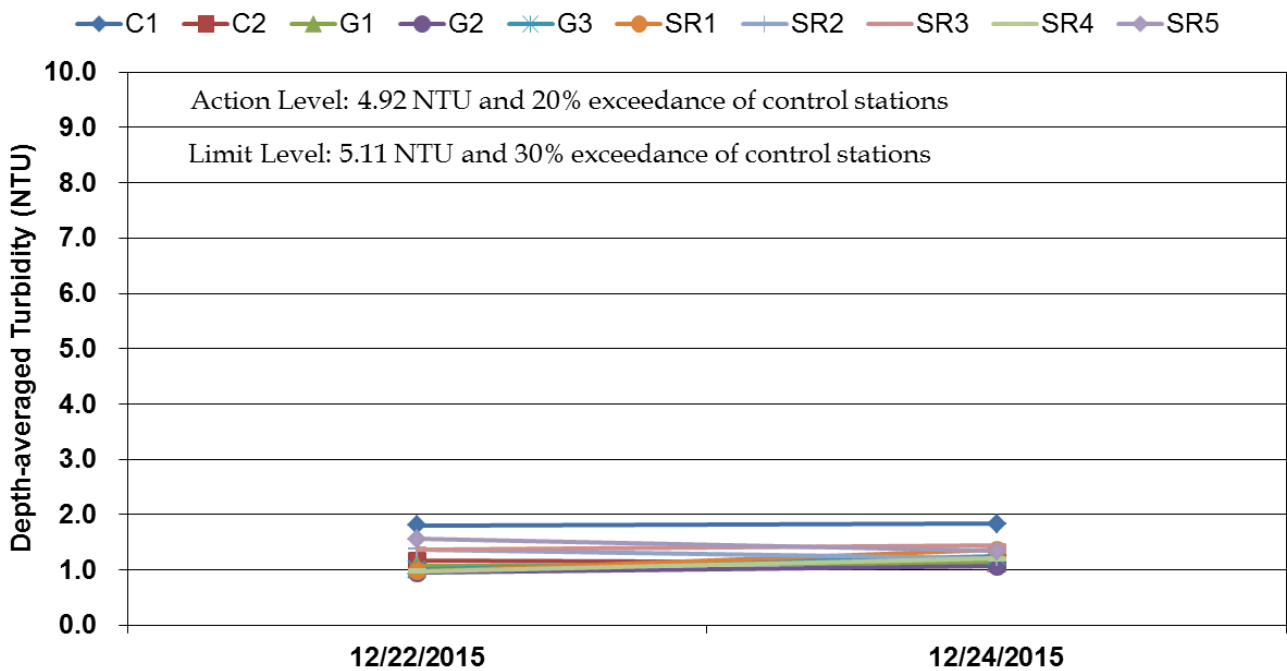
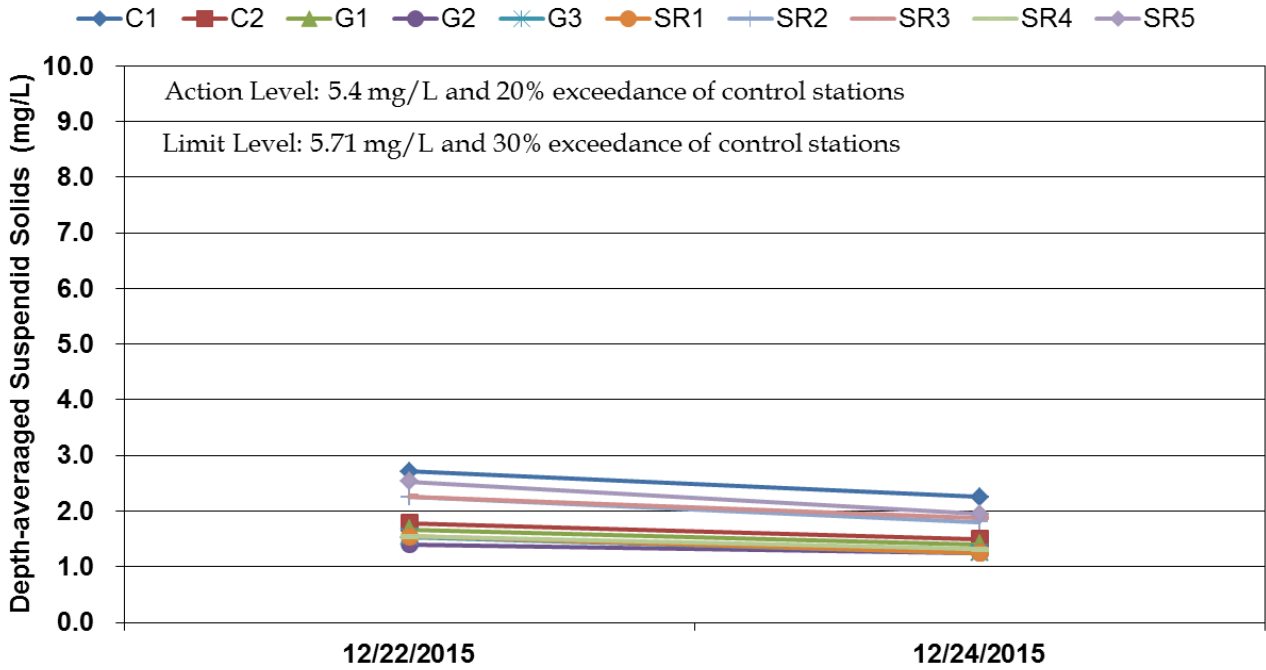


Figure D4 Depth-averaged turbidity (NTU) of water column measured during the first weekly impact monitoring period (week of 21-27 December 2015)



### Mid-ebb Suspended Solids (Depth-averaged)



### Mid-flood Suspended Solids (Depth-averaged)

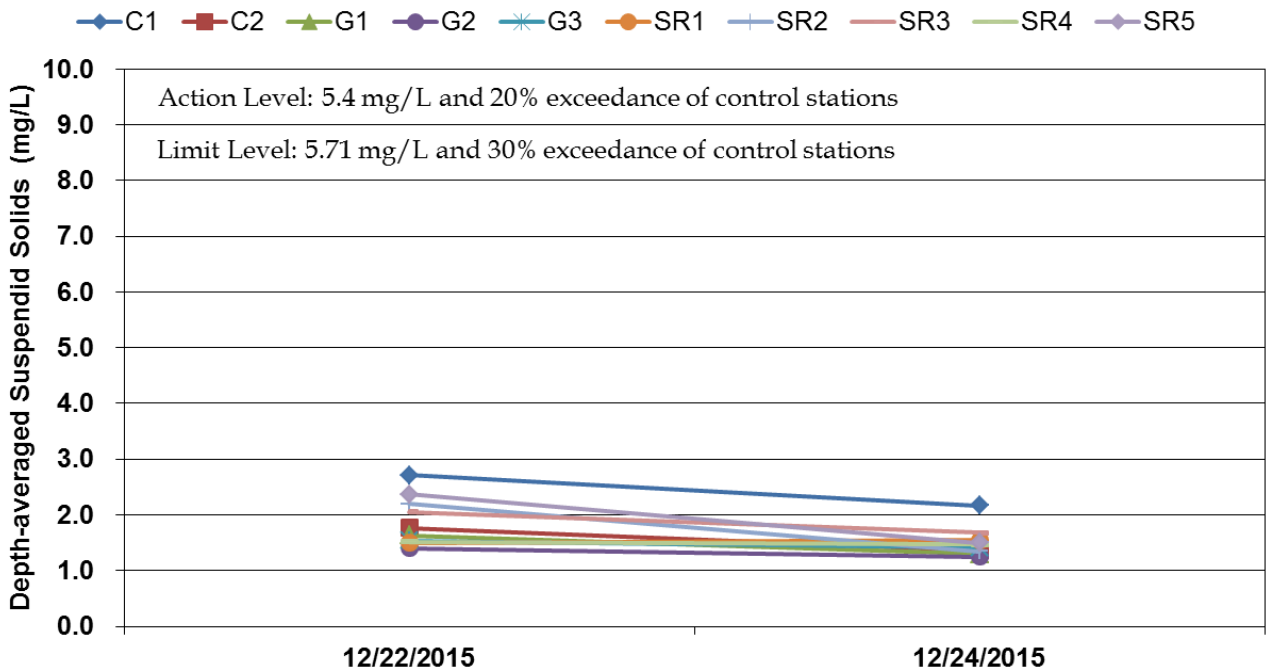


Figure D5 Depth-averaged suspended solid (mg/L) of water column measured during the first weekly impact monitoring period (week of 21-27 December 2015)



Date: 22-Dec-15  
Tide: Mid-Flood  
Weather: Cloudy  
Sea Conditions: Small Wave

Location	Sampling Time	Water Depth (m)	Current direction	Current speed (ms <sup>-1</sup> )	Monitoring Depth	Temperature (°C)			Salinity (ppt)			DO (mg/l)			DO Saturation (%)			Turbidity (NTU)				Suspended Solids (mg/l)			
						1	2	Ave.*	1	2	Ave.*	1	2	Ave.*	1	2	Ave.*	1	2	Ave.*	D.A.**	1	2	Ave.*	D.A.**
C1	1344-1355	13.0	S	0.3	Surface	20.3	20.4	20.4	32.1	32.2	32.2	7.8	7.8	7.8	104.8	105.1	105.0	1.8	1.8	1.8		2.7	2.8	2.8	
					Middle	20.2	20.3	20.3	32.0	32.1	32.1	7.6	7.6	7.6	102.0	101.6	101.8	1.9	1.9	1.9	1.8	2.9	2.8	2.9	2.7
					Bottom	20.1	20.0	20.1	32.1	32.1	32.1	7.5	7.5	7.5	100.5	100.2	100.4	1.7	1.7	1.7		2.6	2.5	2.6	
C2	1527-1537	12.6	S	0.1	Surface	20.2	20.3	20.3	32.1	32.2	32.2	7.8	7.9	7.9	104.9	105.5	105.2	1.1	1.1	1.1		1.7	1.8	1.8	
					Middle	20.2	20.1	20.2	32.2	32.1	32.2	7.8	7.8	7.8	104.8	104.4	104.6	1.2	1.1	1.1	1.2	1.7	1.7	1.7	1.8
					Bottom	20.2	20.2	20.2	32.3	32.2	32.3	7.6	7.7	7.7	102.4	102.6	102.5	1.2	1.2	1.2		1.8	1.9	1.9	
G1	1412-1422	11.4	S	0.1	Surface	20.2	20.4	20.3	32.2	32.1	32.2	8.3	8.2	8.2	110.7	110.1	110.4	0.9	1.0	1.0		1.4	1.5	1.5	
					Middle	20.1	20.2	20.2	32.3	32.1	32.2	8.2	8.2	8.2	109.5	110.0	109.8	1.1	1.0	1.0	1.1	1.6	1.6	1.6	1.6
					Bottom	20.3	20.2	20.3	32.0	32.1	32.1	8.2	8.2	8.2	109.7	110.1	109.9	1.2	1.2	1.2		1.8	1.9	1.9	
G2	1443-1449	1.0	S	0.2	Surface	---	---	-	---	---	-	---	---	-	---	---	-	---	---	-	---	---	-	---	
					Middle	20.0	20.1	20.1	32.0	32.1	32.1	7.5	7.5	7.5	100.0	100.5	100.3	1.0	0.9	1.0	1.0	1.4	1.4	1.4	1.4
					Bottom	---	---	-	---	---	-	---	---	-	---	---	-	---	---	-	---	---	-	---	---
G3	1431-1441	14.6	S	0.2	Surface	20.3	20.1	20.2	32.0	31.9	32.0	8.0	8.1	8.1	107.7	108.3	108.0	1.0	0.9	0.9		1.5	1.4	1.5	
					Middle	20.0	20.1	20.1	32.1	32.1	32.1	8.1	8.0	8.0	108.0	107.5	107.8	0.9	0.9	0.9	1.0	1.3	1.4	1.4	1.5
					Bottom	20.1	20.2	20.2	31.8	32.0	31.9	7.8	7.9	7.9	105.8	105.6	105.7	1.2	1.2	1.2		1.8	1.8	1.8	
SR1	1424-1430	1.2	S	0.2	Surface	---	---	-	---	---	-	---	---	-	---	---	-	---	---	-	---	---	-	---	
					Middle	32.1	32.2	32.2	7.9	8.0	8.0	7.9	8.0	7.9	106.1	106.7	106.4	0.9	1.0	1.0	1.0	1.4	1.6	1.5	1.5
					Bottom	---	---	-	---	---	-	---	---	-	---	---	-	---	---	-	---	---	-	---	---
SR2	1451-1457	0.8	S	0.1	Surface	---	---	-	---	---	-	---	---	-	---	---	-	---	---	-	---	---	-	---	
					Middle	20.1	20.3	20.2	32.1	32.0	32.1	8.0	8.0	8.0	107.1	107.5	107.3	1.3	1.4	1.4	1.4	2.2	2.2	2.2	2.2
					Bottom	---	---	-	---	---	-	---	---	-	---	---	-	---	---	-	---	---	-	---	---
SR3	1400-1410	6.4	S	0.1	Surface	20.3	20.1	20.2	32.2	32.0	32.1	8.6	8.7	8.7	115.8	116.2	116.0	1.3	1.3	1.3		1.9	1.9	1.9	
					Middle	20.2	20.4	20.3	32.1	32.3	32.2	8.5	8.6	8.5	114.2	114.7	114.5	1.3	1.3	1.3	1.4	2.0	2.0	2.0	2.1
					Bottom	20.2	20.1	20.2	32.1	32.2	32.2	8.4	8.4	8.4	112.7	113.1	112.9	1.5	1.5	1.5		2.2	2.3	2.3	
SR4	1512-1522	5.8	S	0.2	Surface	20.3	20.2	20.3	32.1	32.2	32.2	7.6	7.6	7.6	101.3	102.1	101.7	0.9	0.9	0.9		1.4	1.3	1.4	
					Middle	20.2	20.1	20.2	32.2	32.1	32.2	7.5	7.6	7.5	100.9	101.3	101.1	0.9	1.0	1.0	1.0	1.5	1.5	1.5	1.5
					Bottom	20.1	20.2	20.2	32.1	32.2	32.2	7.5	7.5	7.5	100.4	100.8	100.6	1.1	1.1	1.1		1.7	1.7	1.7	
SR5	1459-1509	9.0	S	0.1	Surface	20.2	20.3	20.3	32.1	32.3	32.2	7.9	7.9	7.9	105.9	106.4	106.2	1.4	1.3	1.3		2.1	1.9	2.0	
					Middle	20.1	20.2	20.2	32.2	32.1	32.2	7.9	7.9	7.9	105.5	105.7	105.6	1.7	1.7	1.7	1.6	2.5	2.6	2.6	2.4
					Bottom	20.3	20.2	20.3	32.1	32.1	32.1	7.6	7.7	7.7	102.1	102.9	102.5	1.7	1.6	1.7		2.6	2.5	2.6	

Remark or Observation:

1. \* Average; \*\* Depth Average

2. Each station was sampled and measurements/ water samples were taken at three depths, namely, 1 m below water surface, mid-depth and 1 m above sea bed, except where the water depth less than 6 m, the mid-depth station may be omitted. For stations that are less than 3 m in depth, only the mid-depth sample was taken.

Date: 22-Dec-15  
Tide: Mid-Ebb  
Weather: Cloudy  
Sea Conditions: Small Wave

Location	Sampling Time	Water Depth (m)	Current direction	Current speed (ms <sup>-1</sup> )	Monitoring Depth	Temperature (°C)			Salinity (ppt)			DO (mg/l)			DO Saturation (%)			Turbidity (NTU)				Suspended Solids (mg/l)			
						1	2	Ave.*	1	2	Ave.*	1	2	Ave.*	1	2	Ave.*	1	2	Ave.*	D.A.**	1	2	Ave.*	D.A.**
C1	0845-0856	12.8	E	0.2	Surface	20.0	20.1	20.1	32.3	32.2	32.3	7.7	7.6	7.7	102.8	102.6	102.7	1.8	1.7	1.7		2.6	2.8	2.7	
					Middle	20.0	19.9	20.0	32.4	32.3	32.4	7.4	7.5	7.4	99.7	100.2	100.0	1.8	1.9	1.9	1.8	2.8	2.8	2.8	2.7
					Bottom	19.8	19.9	19.9	32.5	32.4	32.5	7.4	7.3	7.3	98.8	98.4	98.6	1.7	1.8	1.8		2.6	2.7	2.7	
C2	1038-1048	12.3	E	0.1	Surface	20.1	20.1	20.1	32.1	32.2	32.2	7.7	8.2	8.0	105.1	109.2	107.2	1.1	1.0	1.0		1.5	1.5	1.5	
					Middle	20.0	20.1	20.1	32.2	32.2	32.2	7.6	8.1	7.9	103.6	108.2	105.9	1.1	1.0	1.1	1.1	1.8	1.6	1.7	1.7
					Bottom	19.7	19.9	19.8	32.4	32.4	32.4	7.5	8.0	7.8	100.1	107.1	103.6	1.2	1.3	1.3		1.9	2.0	2.0	
G1	0914-0924	11.1	E	0.2	Surface	20.0	---	20.0	32.2	---	32.2	8.2	---	8.2	108.9	---	108.9	0.9	---	0.9		1.3	---	1.3	
					Middle	20.1	20.1	20.1	32.3	32.2	32.3	8.1	7.9	8.0	107.9	105.3	106.6	1.1	1.0	1.0	1.0	1.7	1.5	1.6	1.6
					Bottom	20.0	---	20.0	32.3	---	32.3	8.1	---	8.1	107.4	---	107.4	1.2	---	1.2		1.9	---	1.9	
G2	0950-0956	0.8	E	0.1	Surface	---	20.0	-	---	32.2	-	---	7.9	-	---	105.9	-	---	0.9	-		---	1.4	-	
					Middle	20.0	20.0	20.0	32.2	32.2	32.2	7.4	7.8	7.6	101.2	104.2	102.7	0.9	0.9	0.9	0.9	1.4	1.4	1.4	1.4
					Bottom	---	19.9	-	---	32.3	-	---	7.7	-	---	102.2	-	---	1.2	-		---	1.8	-	
G3	0936-0947	14.4	E	0.2	Surface	20.1	---	20.1	32.1	---	32.1	8.0	---	8.0	106.5	---	106.5	0.9	---	0.9		1.3	---	1.3	
					Middle	20.0	20.1	20.1	32.3	32.2	32.3	7.8	7.9	7.8	104.6	104.1	104.4	1.0	1.6	1.3	1.1	1.5	2.3	1.9	1.7
					Bottom	19.8	---	19.8	32.4	---	32.4	7.7	---	7.7	102.6	---	102.6	1.2	---	1.2		1.8	---	1.8	
SR1	0927-0934	1.1	E	0.2	Surface	---	---	-	---	---	-	---	---	-	---	---	-	---	---		---	---	-		
					Middle	20.0	20.0	20.0	32.3	32.3	32.3	7.9	7.4	7.6	105.5	101.3	103.4	1.1	1.0	1.0	1.0	1.6	1.4	1.5	1.5
					Bottom	---	---	-	---	---	-	---	---	-	---	---	-	---	---	-		---	---	-	
SR2	0958-1004	0.7	E	0.1	Surface	---	20.1	-	---	32.1	-	---	7.5	-	---	99.4	-	---	0.9	-		---	1.3	-	
					Middle	20.1	20.1	20.1	32.1	32.2	32.2	7.9	7.4	7.7	104.5	98.3	101.4	1.5	1.1	1.3	1.3	2.2	1.6	1.9	1.9
					Bottom	---	20.1	-	---	32.2	-	---	7.4	-	---	97.2	-	---	1.2	-		---	1.8	-	
SR3	0901-0911	6.0	E	0.2	Surface	20.1	20.1	20.1	32.3	32.1	32.2	8.5	7.8	8.1	113.5	104.2	108.9	1.3	1.5	1.4		2.1	2.3	2.2	
					Middle	20.1	19.9	20.0	32.2	32.2	32.2	8.4	7.7	8.1	112.3	102.7	107.5	1.5	1.7	1.6	1.5	2.2	2.7	2.5	2.4
					Bottom	19.9	19.8	19.9	32.4	32.3	32.4	8.3	7.6	7.9	110.6	101.4	106.0	1.6	1.6	1.6		2.5	2.6	2.6	
SR4	1021-1032	5.5	E	0.2	Surface	20.2	20.1	20.2	32.2	32.3	32.3	7.5	8.5	8.0	98.8	113.2	106.0	0.9	1.3	1.1		1.5	1.9	1.7	
					Middle	20.1	20.0	20.1	32.2	32.3	32.3	7.5	8.5	8.0	98.5	112.5	105.5	1.0	1.5	1.3	1.3	1.5	2.4	2.0	1.9
					Bottom	20.0	19.9	20.0	32.3	32.3	32.3	7.4	8.3	7.9	97.6	110.9	104.3	1.1	1.7	1.4		1.6	2.5	2.1	
SR5	1008-1018	8.7	E	0.1	Surface	20.2	20.0	20.1	32.2	32.1	32.2	7.8	7.7	7.8	104.7	104.6	104.7	1.5	1.1	1.3		2.3	1.7	2.0	
					Middle	20.0	19.9	20.0	32.3	32.1	32.2	7.7	7.6	7.6	102.9	102.9	102.9	1.6	1.2	1.4	1.4	2.5	1.9	2.2	2.2
					Bottom	19.8	19.8	19.8	32.4	32.3	32.4	7.5	7.5	7.5	100.9	100.3	100.6	1.7	1.3	1.5		2.8	1.9	2.4	

Remark or Observation:

1. \* Average; \*\* Depth Average

2. Each station was sampled and measurements/ water samples were taken at three depths, namely, 1 m below water surface, mid-depth and 1 m above sea bed, except where the water depth less than 6 m, the mid-depth station may be omitted. For stations that are less than 3 m in depth, only the mid-depth sample was taken.

Date: 24-Dec-15  
Tide: Mid-Flood  
Weather: Cloudy  
Sea Conditions: Small Wave

Location	Sampling Time	Water Depth (m)	Current direction	Current speed (ms <sup>-1</sup> )	Monitoring Depth	Temperature (°C)			Salinity (ppt)			DO (mg/l)			DO Saturation (%)			Turbidity (NTU)				Suspended Solids (mg/l)			
						1	2	Ave.*	1	2	Ave.*	1	2	Ave.*	1	2	Ave.*	1	2	Ave.*	D.A.**	1	2	Ave.*	D.A.**
C1	1525-1540	12.6	E	0.2	Surface	20.3	20.2	20.3	32.1	32.2	32.2	7.6	7.7	7.7	100.8	101.0	100.9	1.8	1.7	1.7		2.1	2.3	2.2	
					Middle	20.2	20.2	20.2	32.3	32.4	32.4	7.5	7.5	7.5	98.4	98.6	98.5	1.8	1.9	1.8	1.8	2.0	2.2	2.1	2.2
					Bottom	20.0	20.0	20.0	32.5	32.3	32.4	7.4	7.4	7.4	97.8	97.8	97.8	1.9	1.9	1.9		2.3	2.1	2.2	
C2	1750-1755	12.4	E	0.1	Surface	20.4	20.3	20.4	32.1	32.2	32.2	7.7	7.8	7.8	102.2	102.4	102.3	1.0	1.0	1.0		1.2	1.3	1.3	
					Middle	6.7	6.7	6.7	32.3	32.3	32.3	7.6	7.6	7.6	100.0	99.8	99.9	1.1	1.2	1.1	1.1	1.4	1.3	1.4	1.4
					Bottom	12.4	12.4	12.4	32.4	32.3	32.4	7.5	7.5	7.5	99.2	99.4	99.3	1.2	1.3	1.3		1.5	1.5	1.5	
G1	1610-1625	11.0	E	0.1	Surface	20.2	20.1	20.2	32.1	32.1	32.1	8.2	8.3	8.3	108.7	108.9	108.8	1.0	1.0	1.0		1.0	1.2	1.1	
					Middle	20.0	20.0	20.0	32.2	32.3	32.3	8.1	8.1	8.1	106.9	107.1	107.0	1.1	1.2	1.1	1.1	1.3	1.3	1.3	1.3
					Bottom	19.9	19.9	19.9	32.4	32.5	32.5	8.1	8.0	8.0	106.5	106.3	106.4	1.2	1.2	1.2		1.4	1.6	1.5	
G2	1710-1714	1.0	E	0.2	Surface	---	---	-	---	---	-	---	---	-	---	---	-	---	---	-	---	---	-	---	
					Middle	20.1	20.0	20.1	32.2	32.1	32.2	7.4	7.5	7.4	98.2	98.4	98.3	1.1	1.1	1.1	1.1	1.2	1.3	1.3	1.3
					Bottom	---	---	-	---	---	-	---	---	-	---	---	-	---	---	-	---	---	-	---	---
G3	1650-1705	14.5	E	0.1	Surface	20.2	20.2	20.2	32.1	32.0	32.1	7.9	7.9	7.9	104.5	104.7	104.6	1.1	1.2	1.1		1.4	1.3	1.4	
					Middle	20.1	20.0	20.1	32.2	32.3	32.3	7.7	7.7	7.7	101.2	101.4	101.3	1.2	1.3	1.3	1.2	1.5	1.4	1.5	1.4
					Bottom	20.0	19.9	20.0	32.3	32.4	32.4	7.6	7.6	7.6	99.9	100.1	100.0	1.3	1.3	1.3		1.4	1.5	1.5	
SR1	1630-1640	1.1	E	0.2	Surface	---	---	-	---	---	-	---	---	-	---	---	-	---	---	-	---	---	-	---	
					Middle	20.1	20.2	20.2	32.1	32.2	32.2	7.9	7.9	7.9	103.7	103.9	103.8	1.4	1.4	1.4	1.4	1.5	1.6	1.6	1.6
					Bottom	---	---	-	---	---	-	---	---	-	---	---	-	---	---	-	---	---	-	---	---
SR2	1715-1719	0.7	E	0.2	Surface	---	---	-	---	---	-	---	---	-	---	---	-	---	---	-	---	---	-	---	
					Middle	20.2	20.1	20.2	32.1	32.2	32.2	7.6	7.6	7.6	100.3	100.5	100.4	1.2	1.2	1.2	1.2	1.4	1.3	1.4	1.4
					Bottom	---	---	-	---	---	-	---	---	-	---	---	-	---	---	-	---	---	-	---	---
SR3	1550-1605	6.1	E	0.1	Surface	20.3	20.3	20.3	32.0	32.1	32.1	8.7	8.6	8.6	114.2	114.0	114.1	1.3	1.3	1.3		1.7	1.4	1.6	
					Middle	20.1	20.0	20.1	32.2	32.3	32.3	8.4	8.4	8.4	110.6	110.4	110.5	1.4	1.4	1.4	1.4	1.6	1.6	1.6	1.7
					Bottom	19.9	20.0	20.0	32.4	32.4	32.4	8.3	8.2	8.3	109.3	109.1	109.2	1.6	1.6	1.6		1.8	2.0	1.9	
SR4	1735-1745	5.6	E	0.2	Surface	20.3	20.4	20.4	32.2	32.1	32.2	7.7	7.7	7.7	101.2	101.0	101.1	1.1	1.1	1.1		1.4	1.4	1.4	
					Middle	20.2	20.2	20.2	32.2	32.2	32.2	7.4	7.5	7.4	98.2	98.4	98.3	1.2	1.2	1.2	1.2	1.4	1.5	1.5	1.5
					Bottom	20.0	20.1	20.1	32.3	32.3	32.3	7.3	7.4	7.3	97.0	97.2	97.1	1.3	1.3	1.3		1.4	1.7	1.6	
SR5	1720-1730	8.7	E	0.2	Surface	20.3	20.2	20.3	32.1	32.2	32.2	7.8	7.8	7.8	102.4	102.6	102.5	1.2	1.2	1.2		1.5	1.3	1.4	
					Middle	20.1	20.1	20.1	32.2	32.3	32.3	7.6	7.6	7.6	100.5	100.7	100.6	1.3	1.3	1.3	1.3	1.3	1.6	1.5	1.5
					Bottom	20.0	19.9	20.0	32.4	32.4	32.4	7.6	7.5	7.5	99.9	100.1	100.0	1.5	1.5	1.5		1.5	1.8	1.7	

Remark or Observation:

1. \* Average; \*\* Depth Average

2. Each station was sampled and measurements/ water samples were taken at three depths, namely, 1 m below water surface, mid-depth and 1 m above sea bed, except where the water depth less than 6 m, the mid-depth station may be omitted. For stations that are less than 3 m in depth, only the mid-depth sample was taken.

Date: 24-Dec-15  
Tide: Mid-Ebb  
Weather: Cloudy  
Sea Conditions: Small Wave

Location	Sampling Time	Water Depth (m)	Current direction	Current speed (ms <sup>-1</sup> )	Monitoring Depth	Temperature (°C)			Salinity (ppt)			DO (mg/l)			DO Saturation (%)			Turbidity (NTU)				Suspended Solids (mg/l)			
						1	2	Ave.*	1	2	Ave.*	1	2	Ave.*	1	2	Ave.*	1	2	Ave.*	D.A.**	1	2	Ave.*	D.A.**
C1	1028-1038	13.4	E	0.2	Surface	20.1	20.2	20.2	32.3	32.4	32.4	7.6	7.6	7.6	101.7	101.5	101.6	1.8	1.8	1.8		2.4	2.1	2.3	
					Middle	20.1	20.0	20.1	32.5	32.4	32.5	7.3	7.4	7.4	98.6	99.1	98.9	1.9	2.0	1.9	1.8	2.1	2.5	2.3	2.3
					Bottom	20.0	19.9	20.0	32.5	32.6	32.6	7.3	7.2	7.3	97.6	97.2	97.4	1.8	1.9	1.8		2.0	2.4	2.2	
C2	1243-1258	13.2	E	0.2	Surface	20.1	20.2	20.2	32.1	32.3	32.2	7.7	8.1	7.9	104.0	108.1	106.1	1.1	1.0	1.1		1.2	1.1	1.2	
					Middle	20.1	20.2	20.2	32.3	32.3	32.3	7.6	8.0	7.8	102.5	107.1	104.8	1.2	1.1	1.1	1.2	1.6	1.4	1.5	1.4
					Bottom	19.9	20.0	20.0	32.4	32.4	32.4	7.4	8.0	7.7	99.0	106.0	102.5	1.3	1.4	1.3		1.6	1.6	1.6	
G1	1058-1108	11.8	E	0.2	Surface	20.2	---	20.2	32.2	---	32.2	8.1	---	8.1	107.8	---	107.8	0.9	---	0.9		1.2	---	1.2	
					Middle	20.1	20.2	20.2	32.4	32.4	32.4	8.0	7.8	7.9	106.8	104.2	105.5	1.2	1.0	1.1	1.1	1.6	1.3	1.5	1.4
					Bottom	20.1	---	20.1	32.5	---	32.5	8.0	---	8.0	106.3	---	106.3	1.3	---	1.3		1.5	---	1.5	
G2	1143-1153	1.5	E	0.1	Surface	---	20.1	-	---	32.3	-	---	7.9	-	---	104.8	-	---	1.0	-		---	1.1	-	
					Middle	20.1	20.1	20.1	32.3	32.4	32.4	7.3	7.7	7.5	100.0	103.1	101.6	1.0	1.0	1.0	1.0	1.2	1.2	1.2	1.2
					Bottom	---	19.9	-	---	32.4	-	---	7.6	-	---	101.1	-	---	1.2	-		---	1.4	-	
G3	1128-1138	15.2	E	0.2	Surface	20.2	---	20.2	32.2	---	32.2	7.9	---	7.9	105.4	---	105.4	0.9	---	0.9		1.1	---	1.1	
					Middle	20.0	20.2	20.1	32.3	32.3	32.3	7.8	7.8	7.8	103.5	103.0	103.3	1.0	1.6	1.3	1.2	1.2	1.9	1.6	1.4
					Bottom	20.0	---	20.0	32.5	---	32.5	7.6	---	7.6	101.5	---	101.5	1.3	---	1.3		1.5	---	1.5	
SR1	1113-1123	1.8	E	0.1	Surface	---	---	-	---	---	-	---	---	-	---	---	-	---	---	-		---	---	-	
					Middle	20.2	20.0	20.1	32.3	32.4	32.4	7.8	7.3	7.5	104.4	100.2	102.3	1.1	1.0	1.1	1.1	1.2	1.3	1.3	1.3
					Bottom	---	---	-	---	---	-	---	---	-	---	---	-	---	---	-		---	---	-	
SR2	1158-1208	1.2	E	0.2	Surface	---	20.2	-	---	32.3	-	---	7.4	-	---	98.3	-	---	0.9	-		---	1.1	-	
					Middle	20.1	20.2	20.2	32.2	32.2	32.2	7.8	7.4	7.6	103.4	97.2	100.3	1.6	1.1	1.3	1.3	1.7	1.3	1.5	1.5
					Bottom	---	20.1	-	---	32.3	-	---	7.3	-	---	96.0	-	---	1.2	-		---	1.4	-	
SR3	1043-1053	6.8	E	0.3	Surface	20.2	20.2	20.2	32.4	32.3	32.4	8.4	7.7	8.0	112.4	103.1	107.8	1.4	1.6	1.5		1.7	1.8	1.8	
					Middle	20.1	20.1	20.1	32.3	32.4	32.4	8.4	7.6	8.0	111.2	101.6	106.4	1.5	1.7	1.6	1.6	2.0	2.1	2.1	1.9
					Bottom	19.9	19.8	19.9	32.4	32.5	32.5	8.2	7.5	7.8	109.5	100.2	104.9	1.7	1.7	1.7		2.0	1.9	2.0	
SR4	1228-1238	6.2	E	0.2	Surface	20.3	20.1	20.2	32.2	32.3	32.3	7.4	8.4	7.9	97.7	112.1	104.9	1.0	1.3	1.2		1.3	1.6	1.5	
					Middle	20.1	20.2	20.2	32.3	32.4	32.4	7.4	8.4	7.9	97.4	111.4	104.4	1.1	1.6	1.3	1.3	1.3	1.9	1.6	1.6
					Bottom	20.2	20.0	20.1	32.4	32.5	32.5	7.3	8.2	7.8	96.4	109.8	103.1	1.2	1.7	1.5		1.5	2.1	1.8	
SR5	1213-1223	9.4	E	0.2	Surface	20.3	20.2	20.3	32.2	32.2	32.2	7.7	7.6	7.7	103.6	103.5	103.6	1.5	1.2	1.3		1.6	1.4	1.5	
					Middle	20.0	20.0	20.0	32.3	32.2	32.3	7.6	7.5	7.6	101.8	101.7	101.8	1.7	1.2	1.5	1.5	1.9	1.6	1.8	1.8
					Bottom	19.9	19.8	19.9	32.4	32.5	32.5	7.4	7.5	7.4	99.8	99.2	99.5	1.8	1.4	1.6		2.4	1.6	2.0	

Remark or Observation:

1. \* Average; \*\* Depth Average

2. Each station was sampled and measurements/ water samples were taken at three depths, namely, 1 m below water surface, mid-depth and 1 m above sea bed, except where the water depth less than 6 m, the mid-depth station may be omitted. For stations that are less than 3 m in depth, only the mid-depth sample was taken.

**ERM has over 140 offices  
Across the following  
countries worldwide**

Argentina	New Zealand
Australia	Panama
Belgium	Peru
Brazil	Poland
Canada	Portugal
China	Puerto Rico
Colombia	Romania
France	Russia
Germany	Singapore
Hong Kong	South Africa
Hungary	Spain
India	Sweden
Indonesia	Taiwan
Ireland	Thailand
Italy	The Netherlands
Japan	United Arab Emirates
Kazakhstan	United Kingdom
Korea	United States
Malaysia	Vietnam
Mexico	

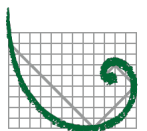
**Environmental Resources Management**

**16/F Berkshire House  
25 Westlands Road  
Quarry Bay, Hong Kong**

**T: 2271 3000**

**F: 2723 5660**

**[www.erm.com](http://www.erm.com)**



**ERM**