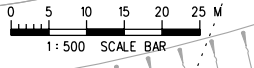


LEGEND:

- DW22 - DEWATERING WELL
- ▨ - AREA FOR RECHARGE
- - CUT-OFF WALL



UserWorkspace C:\Program Files\Bentley\Workspace\Users\untitled\pct UserRef C:\Program Files\Bentley\Workspace\Projects\untitled\pct
 FILENAME: I:\Contract\Info\TOC\Drawings\Temp Files\Amco\KDB400-CA-Y0025-B\KDB400-CA-Y0025-B.dgn
 PLOT: DRV:\C:\Program Files\Bentley\Workspace\system\plotdrv\plot.v8.plt
 PRINTED BY: bk-CHAN 2007/1/22 AM 10:33:59
 MODELNAME: PLOT VIEW

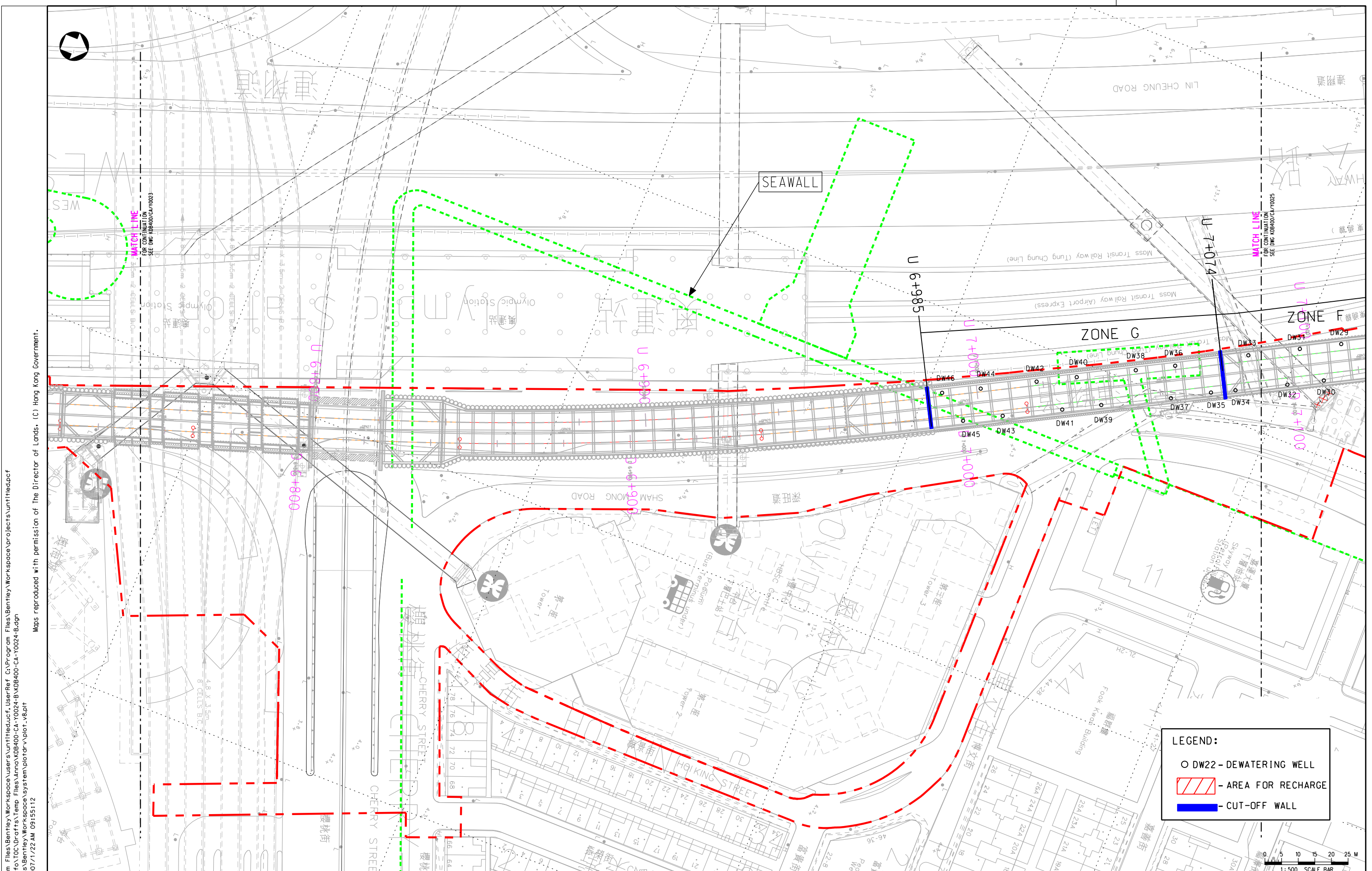
Maps reproduced with permission of The Director of Lands, (C) Hong Kong Government.

| REV | DATE | BY | SUB | APP | DESCRIPTION |
|-----|-------|----|-----|-----|-------------------------|
| 18 | JAN07 | | | | DEWATERING WELL REVISED |
| 02 | AUG06 | | | | FIRST ISSUE |

| | |
|-------------|-----------|
| DESIGNED BY | |
| DRAWN BY | KCCHAN |
| CHECKED BY | BK |
| IN CHARGE | AC |
| DATE | 02AUG2006 |

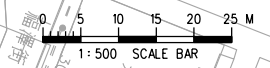
TITLE
 KDB400 TUNNELS - YMTV BUILDING
 TO NAM CHEONG OVERRUN
 LOCATION PLAN FOR DEWATERING
 & RECHARGING SCHEME
 (SHEET 2 OF 2)

| | | | |
|----------------|------|----------------------|-----|
| SCALE | | 1 : 500 @ A1 | |
| ORIGINATOR | CSCC | ORIGINATOR REFERENCE | |
| DRAWING NUMBER | / / | REV | B |
| RAILWAY | KSL | LOCATION | 000 |
| STAGE | D | SHEET NO | 2 |



LEGEND:

- DW22 - DEWATERING WELL
- ▨ - AREA FOR RECHARGE
- CUT-OFF WALL



UserWorkspace C:\Program Files\Bentley\Workspace\Users\untitled.dwg UserRef C:\Program Files\Bentley\Workspace\Projects\untitled.dwg
 FILENAME: T:\Contract\Info\TOC\Drawings\Temp Files\anno\KDB400-CA-Y0024-B\KDB400-CA-Y0024-B.dgn
 PLOT: DRV:\C:\Program Files\Bentley\Workspace\system\plotdrv\plot.v8.plt
 PRINTED BY: bk-ghan 2007/1/22 2:22 AM 09:55:12
 MODELNAME: PLOT VIEW

Maps reproduced with permission of The Director of Lands. (C) Hong Kong Government.

| REV | DATE | BY | SUB | APP | DESCRIPTION |
|-----|-------|----|-----|-----|-------------------------|
| 18 | JAN07 | | | | DEWATERING WELL REVISED |
| 02 | AUG06 | | | | FIRST ISSUE |

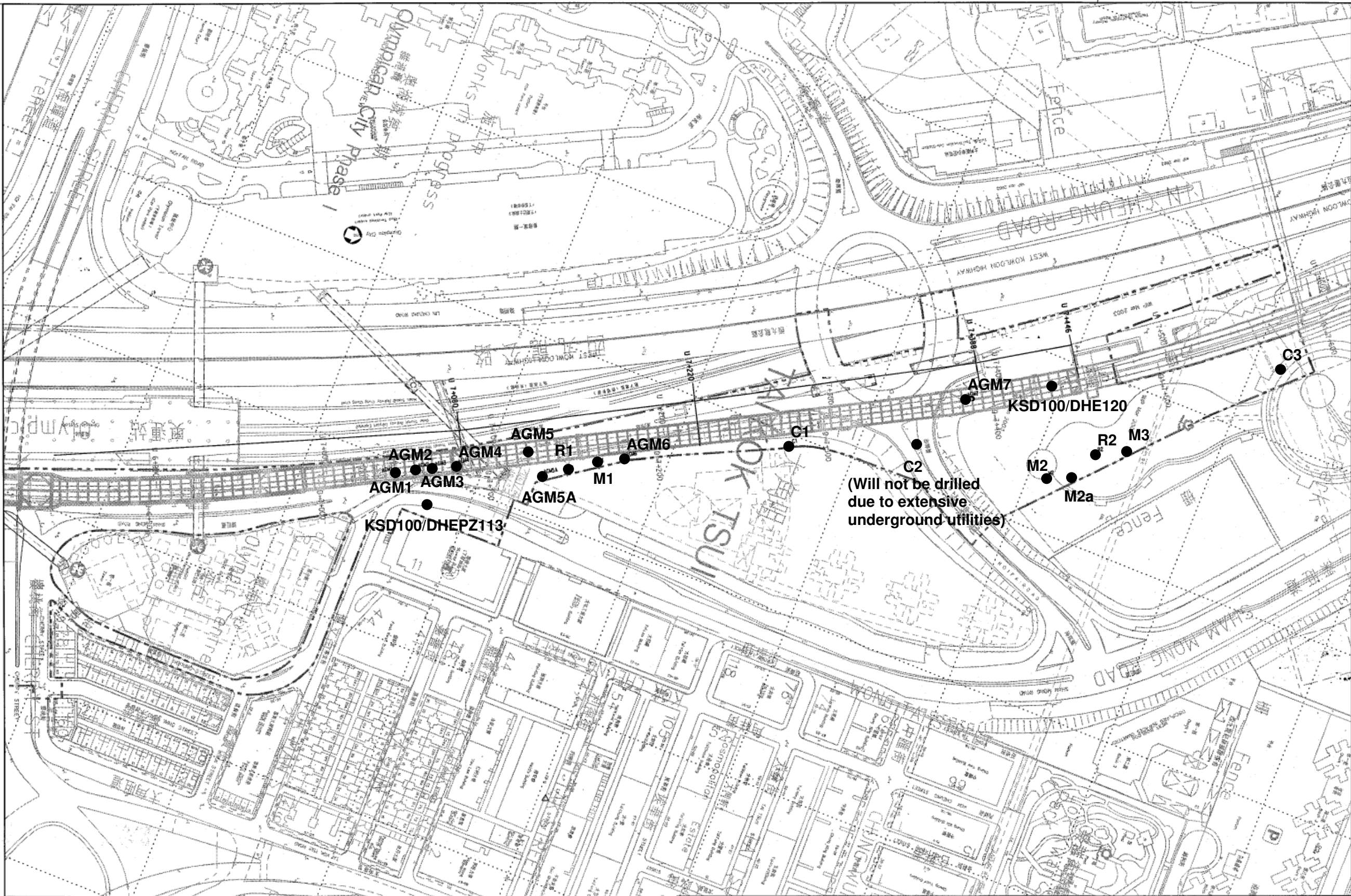
| | |
|-------------|-----------|
| DESIGNED BY | |
| DRAWN BY | KCCHAN |
| CHECKED BY | BK |
| IN CHARGE | AC |
| DATE | 02AUG2006 |

TITLE
 KDB400 TUNNELS - YMTV BUILDING
 TO NAM CHEONG OVERRUN
 LOCATION PLAN FOR DEWATERING WELL
 & RECHARGING SCHEME
 (SHEET 1 OF 2)

| | | | |
|----------------------|--------------|-------|----------|
| SCALE | 1 : 500 @ A1 | | |
| ORIGINATOR | CSCCE | | |
| ORIGINATOR REFERENCE | | | |
| DRAWING NUMBER | / | / | |
| REV | B | | |
| RAILWAY | LOCATION | STAGE | SHEET NO |
| KSL | 000 | D | 2 |

User: workspace C:\Program Files\Bentley\Workspace\user3\untitled.dwg
 FILENAME: C:\Program Files\Bentley\Workspace\user3\untitled.dwg
 PLOT: D:\C:\Program Files\Bentley\Workspace\System\plotdrv\plot.vba
 PRINTED BY: F:\F:\FONG 2006-09-13 13:43:21
 MODELNAME: PLOT_VBA

Maps reproduced with permission of the Director of Lands. (C) Hong Kong Government.



| REV | DATE | BY | SUB | APP | DESCRIPTION |
|-----|------|----|-----|-----|-------------|
| | | | | | |
| | | | | | |
| | | | | | |
| | | | | | |
| | | | | | |

DESIGNED BY
 DRAWN BY
 CHECKED BY
 IN CHARGE
 DATE

KCR 九龍兩線
 九廣鐵路 Kowloon Southern Link

中國建築工程(香港)有限公司
 CHINA STATE CONSTRUCTION ENG'G. (HONG KONG) LTD.

TITLE
**KOB400 TUNNELS - YMTV BUILDING
 TO NAM CHEONG OVERRUN
 LAYOUT OF BASLINE SAMPLING
 LOCATIONS**

| | |
|----------------|----------------------|
| SCALE | 1 : 600 @ A1 |
| ORIGINATOR | ORIGINATOR REFERENCE |
| CSDC | |
| DRAWING NUMBER | |
| REV | A |
| RAILWAY | LOCATION |
| KSL | 000 |
| STAGE | D |
| SHEET NO | |

Dewatering Schedule for Areas with Groundwater having detectable TPHs

| Dewatering Zone | Chainage | Dewatering Wells Nos. | No. of DW | Daily averaged hourly dewatering rate per DW (m ³ /hr) ^(a) | Estimated Total Daily Zone Dewatering Rate (m ³ /day) for the Dewatering Phase | |
|-----------------|----------------|-----------------------|-----------|--|---|------------------------|
| | | | | | <u>Total water-table drawdown & Pumping Test</u> | <u>Seepage Control</u> |
| A | 7+446 to 7+388 | DW1 - DW4 | 4 | 6 | 576 | 192 |
| B+C | 7+388 to 7+263 | DW5 - DW14 | 10 | 6 | 1,440 | 480 |
| D+E | 7+263 to 7+143 | DW15 - DW24 | 10 | 6 | 1,440 | 480 |
| F | 7+143 to 7+074 | DW25 - DW34 | 10 | 6 | 1,440 | 480 |
| G | 7+074 to 6+985 | DW35 - DW46 | 12 | 6 | 1,728 | 576 |

Note :

(a) Verified average unit dewatering rate obtained from the pumping test at Zone A (i.e. Nam Cheong Park) in November 2006

Tentative Programme for Dewatering of Contaminated Groundwater



中國建築工程(香港)有限公司
CHINA STATE CONSTRUCTION ENGRG. (HONG KONG) LTD.

Date : 16 January 2007

| Contract No. & Name | KDB400 Tunnels - Yau Ma Tei Vent. Bldg. to Nam Cheong Overrun | | | | | | | | | | | | | | | | |
|--|--|-----|-----|-----|------|-----|-----|-----|-----|-----|-----|-----|-----|-----|-----|------|-----|
| | 2006 | | | | 2007 | | | | | | | | | | | 2008 | |
| Major Construction Works | Sep | Oct | Nov | Dec | Jan | Feb | Mar | Apr | May | Jun | Jul | Aug | Ssp | Oct | Nov | Dec | Jan |
| Zone A Chainage U7+446 to U7+388 (Nam Cheong Park) | | | | | | | | | | | | | | | | | |
| Recharge wells installation | █ | | | | | | | | | | | | | | | | |
| Pumping test & Full Draw-down of Water Table | | | █ | | | | | | | | | | | | | | |
| Seepage Control during Excavation and Tunnel Construction | | | █ | █ | █ | █ | █ | █ | █ | | | | | | | | |
| Backfilling | | | | | | | | █ | █ | | | | | | | | |
| Zone B+C Chainage U7+388 to U7+320 (Prince Edward Roundabout) | | | | | | | | | | | | | | | | | |
| Recharge wells installation | | | | | | | | █ | █ | | | | | | | | |
| Pumping test & Full Draw-down of Water Table | | | | | | | | | █ | | | | | | | | |
| Seepage Control during Excavation and Tunnel Construction | | | | | | | | █ | █ | █ | █ | █ | █ | | | | |
| Backfilling | | | | | | | | | | | | █ | █ | | | | |
| Zone D+E Chainage U7+263 to U7+206 (Olympian City III) | | | | | | | | | | | | | | | | | |
| Recharge wells installation | | | | | | | | █ | █ | | | | | | | | |
| Pumping test & Full Draw-down of Water Table | | | | | | | | | █ | | | | | | | | |
| Seepage Control during Excavation and Tunnel Construction | | | | | | | | █ | █ | █ | █ | █ | █ | | | | |
| Backfilling | | | | | | | | | | | | █ | █ | | | | |
| Zone F Chainage U7+143 to U7+074 (OC III - Circulation Tower) | | | | | | | | | | | | | | | | | |
| Recharge wells installation | | | | | | | | | █ | █ | | | | | | | |
| Pumping test & Full Draw-down of Water Table | | | | | | | | | | █ | | | | | | | |
| Seepage Control during Excavation and Tunnel Construction | | | | | | | | | | █ | █ | █ | █ | █ | █ | | |
| Backfilling | | | | | | | | | | | | | | █ | █ | | |
| Zone G Chainage U7+074 to U6+990 (Pok Man Street) | | | | | | | | | | | | | | | | | |
| Recharge wells installation | | | | | | | | | | █ | █ | | | | | | |
| Pumping test & Full Draw-down of Water Table | | | | | | | | | | | █ | | | | | | |
| Seepage Control during Excavation and Tunnel Construction | | | | | | | | | | | █ | █ | █ | █ | █ | | |
| Backfilling | | | | | | | | | | | | | | | | █ | █ |