

# **Territory Development Department**

**Contract No. ST 77/01**

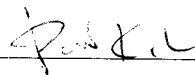
**Sha Tin New Town, Stage II  
Road D15 Linking Lok Shun Path  
and Tai Po Road**

**Monthly Environmental Monitoring & Audit Report -  
August 2002**

**Sha Tin New Town, Stage II Road D15 Linking Lok Shun Path and  
Tai Po Road (Contract No. ST 77/01)**

**Monthly Environmental Monitoring & Audit Report –  
August 2002**

Checked in accordance with EML QP22  
Environmental Team Leader



\_\_\_\_\_

## Table of Contents

<b>1.</b>	<b>INTRODUCTION.....</b>	<b>1</b>
1.1	BACKGROUND .....	1
<b>2.</b>	<b>ENVIRONMENTAL STATUS.....</b>	<b>3</b>
2.1	AIR QUALITY.....	3
	2.1.1 Monitoring Requirements.....	3
	2.1.2 Monitoring Locations.....	3
	2.1.3 Summary of Monitoring Results.....	3
2.2	NOISE.....	6
	2.2.1 Monitoring Requirements.....	6
	2.2.2 Monitoring Locations.....	6
	2.2.3 Summary of Monitoring Results.....	6
<b>3.</b>	<b>ENVIRONMENTAL AUDIT .....</b>	<b>9</b>
3.1	GENERAL .....	9
3.2	ASSESSMENT OF ENVIRONMENTAL MONITORING RESULTS .....	9
3.3	ENVIRONMENTAL COMPLAINTS.....	10
3.4	ASSESSMENT OF MITIGATION MEASURES .....	10
<b>4.</b>	<b>FUTURE KEY ISSUE AND RECOMMENDATION .....</b>	<b>13</b>

<b>Appendix A</b>	<b>Action and Limit Levels</b>
<b>Appendix B</b>	<b>Tentative Schedule for Impact Air Quality and Noise Monitoring</b>
<b>Appendix C</b>	<b>24-Hour TSP Impact Monitoring Results and Plots</b>
<b>Appendix D</b>	<b>1-Hour TSP Impact Monitoring Results and Plots</b>
<b>Appendix E</b>	<b>Daytime 0700-1900Hrs Impact Noise Monitoring Results and Plots</b>
<b>Appendix F</b>	<b>Weather Conditions During Monitoring Periods</b>
<b>Appendix G</b>	<b>Event and Action Plan for Air Quality and Noise</b>
<b>Appendix H</b>	<b>Project Organisation and Contacts of Key Personnel</b>
<b>Appendix I</b>	<b>Summary Records of Complaints Received</b>
<b>Appendix J</b>	<b>Updated Construction Program</b>
<b>Appendix K</b>	<b>Letters to the Complainants</b>

### List of Tables

Table 2.1	Air Quality Monitoring Locations
Table 2.2	Summary of 24 and 1-hour TSP Monitoring Results
Table 2.3	Noise Monitoring Locations
Table 2.4	Summary of Noise Monitoring Results
Table 3.1	Summary of Site Inspection during the Reporting Period
Table 3.2	Summary of Environmental Monitoring
Table 3.3	Summary of Major Mitigation Measures at the Site
Table 3.4	Environmental Complaints / Enquiry Received for the Reporting Month
Table 3.5	Summary of Total Number of Complaints Received to Date

### List of Figure

Figure 1.1	Project Area
Figure 2.1	Air Quality Monitoring Locations
Figure 2.2	Noise Monitoring Locations

## EXECUTIVE SUMMARY

The impact environmental monitoring report was prepared by Environmental Management Limited (EML) for Environmental Monitoring & Audit (EM&A) Services of Sha Tin New Town, Stage II Road D15 Linking Lok Shun Path and Tai Po Road. This report discusses the EM&A services that had been carried out in August 2002.

Environmental monitoring for this Project included both air quality and noise measurements. The parameters measured for air quality are 24-hour and 1-hour Total Suspended Particulate (TSP) while for noise monitoring, the A-weighted continuous sound pressure level ( $L_{eq}$ ) as well as percentile levels ( $L_{10}$  and  $L_{90}$ ) were measured.

Over the reporting period, all measured 24-hour TSP, 1-hour TSP and noise ( $L_{eq}(5min)$ ) monitoring data collected were below the AL Levels. However, since one documented construction noise complaint was received in the end the month, the Action Levels for construction noise and the Event and Action Plan as set out in **Appendix G** was triggered.

The major construction activities in this reporting period included:

- Utility Diversion
- Drainage works
- Piling works
- Form temporary access
- Pre-drill holes for retaining walls & stairs
- Box culvert extension
- Ground Investigation

Regular site inspection was conducted in this reporting month and the mitigation measures as discussed in the relevant documents were assessed. Meanwhile, a noise complaint on Road D15 Site was received on 7 August 2002 via Police near Lok Lo Ha Village. Consequently, an ad hoc site inspection was carried out on 8 August 2002. The findings from the ad hoc inspection and investigation works were discussed in **Section 3.3** of this report. The following mitigation measures were reminded and recommended to the Contractor:

- As stated in the Noise Control Ordinance, the carrying out of general construction work using powered mechanical equipment (including generators) during the restricted hours (between 7 p.m. and 7 a.m. or at any time on a general holiday (including Sunday) is prohibited unless a valid Construction Noise Permit is in force;
- A watchmen or site staff should be employed to check daily that all generators and plants are switched off after the permissible working hours.

Meanwhile, from recommendations on previous noise complaints (Complaint No. C02-N1), it was noted from site inspection that sufficient noise mitigation measures were installed near the complained area and no excavator-mounted breaker was used within 125m from nearby noise sensitive receivers.

Large patches of grout were noted within Road D15 Site near Pier A2 construction. It was recommended to the Contractor that the grout be removed and properly disposed of. Furthermore, it was also recommended that more effective barriers should be placed near the grouting works in order to minimise grout spillage. Bored piling works at retaining wall No.7 will commence in next month. From preliminary investigation, the predicted noise levels may cause noise impacts to the residents, in particular at House No. 86A. As noted by the Contractor, the exact noise level will be measured on site during the piling works. If necessary, temporary purposed-built barriers would need to be installed around the piling works.

## 1. INTRODUCTION

### 1.1 Background

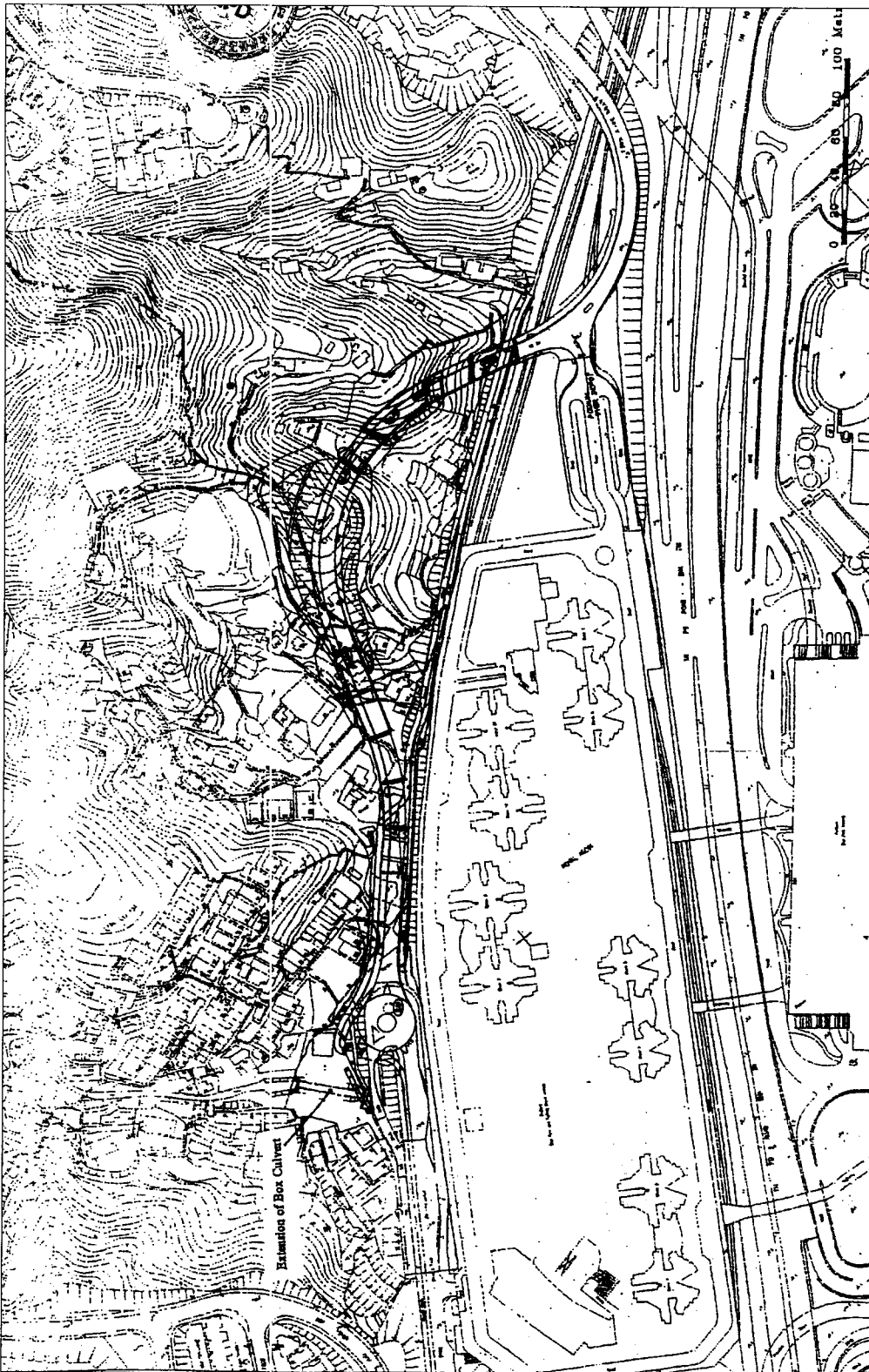
Environmental Management Limited (EML) was appointed by Maunsell Consultants Asia Ltd. as the Environmental Specialist for the project *Sha Tin New Town, Stage II Road Linking Lok Shun Path and Tai Po Road* (Contract No. ST 77/01).

The responsibilities of the Environmental Team included:

- Monitor the noise and air quality data as required in the Environmental Monitoring and Audit (EM&A) Manual;
- Analyse the monitoring data and review the success of EM&A program to cost effectively confirm the adequacy of mitigatory measures implemented and validity of the Environmental Impact Assessment Study predictions and to identify any adverse environmental impacts arising;
- Carry out site inspection to investigate and audit the Contractor's site practice, equipment and work methodologies with respect to pollution control and environmental mitigation, and anticipate environmental issues for proactive action before problems arise;
- Review the proposal for mitigation measures submitted by Contractor in accordance with Event and Action Plans;
- Propose any improvement or other alternative mitigation measures should Contractor's proposal be found to be inadequate;
- Adhere to the procedures for carrying out complaint investigation;
- Audit and prepare EM&A reports on environmental monitoring data and site environmental conditions and;
- Report on EM&A results to Engineer, the ER and EPD.

This is the monthly EM&A report for August 2002. This monthly report describes the results of the impact air quality and noise monitoring works in the reporting period as well as the environmental status and issues of Road D15 Construction Site. Any remedial/follow-up actions undertaken as a result of non-compliance with relevant environmental criteria or complaints related to Road D15 Construction Site would also be discussed in this report.

The project area of Road D15 Construction Site is shown in **Figure 1.1**.



**Figure 1.1 Project Area**

## 2. ENVIRONMENTAL STATUS

### 2.1 Air Quality

#### 2.1.1 *Monitoring Requirements*

In accordance with the EM&A Manual, air quality impact monitoring was conducted in terms of 1 – hour and 24-hour TSP at the designated monitoring locations.

Continuous 24-hour TSP monitoring was performed once in every six days while 1-hour TSP monitoring was performed 3 times in every 6 days. The Action and Limit (AL) levels for air quality is attached in **Appendix A** while the tentative monitoring schedules for the current and next reporting months are attached in **Appendix B**.

#### 2.1.2 *Monitoring Locations*

The designated impact air quality monitoring stations are listed in **Table 2.1** and are shown in **Figure 2.1**.

**Table 2.1 Air Quality Monitoring Locations**

Monitoring Station	Location
A1	Village house at Lok Lo Ha Village
A2	Lok Lo Ha Village House No. 104
A3	Village House near Tsun King Road

#### 2.1.3 *Summary of Monitoring Results*

In this report, the results for the impact air quality monitoring conducted in August 2002 at the three designated locations were evaluated. **Table 2.2** summarises the ranges and mean of the 24-hour and 1-hour TSP monitoring results carried out in the reporting period. Detailed results, including graphical plots and relevant field logs, are presented in **Appendix C** and **D**. Meanwhile, **Appendix F** shows the meteorological conditions during the monitoring days.

**Table 2.2 Summary of 24 and 1-hour TSP Monitoring Results**

Parameter	Monitoring Location	Mean TSP Levels ( $\mu\text{g}/\text{m}^3$ )	Range ( $\mu\text{g}/\text{m}^3$ )	No. of Exceedance	
				Action Levels	Limit Levels
24 – hour TSP	A1	38.2	24 – 54	0	0
	A2	41.8	25 – 67	0	0
	A3	43.2	34 – 50	0	0
1 – hour TSP	A1	153.5	53 – 300	0	0
	A2	129.5	58 – 272	0	0
	A3	125.5	73 – 245	0	0

As can be seen from the table above, all measured 24-hour TSP and 1-hour TSP monitoring data were below the criteria as set out in the Action and Limit Levels in **Appendix A**.

Over the reporting period, the local weather conditions during the samplings were mainly sunny or cloudy except some precipitations were recorded on 5, 6 and 9 August. From field logs, the major

dust sources during samplings near the designated stations include road dusts, vehicle emissions from traffic in Lok Shun Path and construction works at Road D15 Site. The major construction works carried out at Road D15 Site over the reporting period were mainly utility diversion, drainage works, piling works, form temporary access, pre-drill holes for retaining walls & stairs and box culvert extension. Meanwhile, it was also observed that there were construction activities carried out by sites that were not related to this Project in the vicinity of the monitoring stations.

Comparing with previous monitoring results, the measured mean 24-hour TSP levels and 1-hour TSP at all monitoring stations were comparable except slightly higher mean value was recorded for 1-hour TSP at Station A1 in this reporting period.



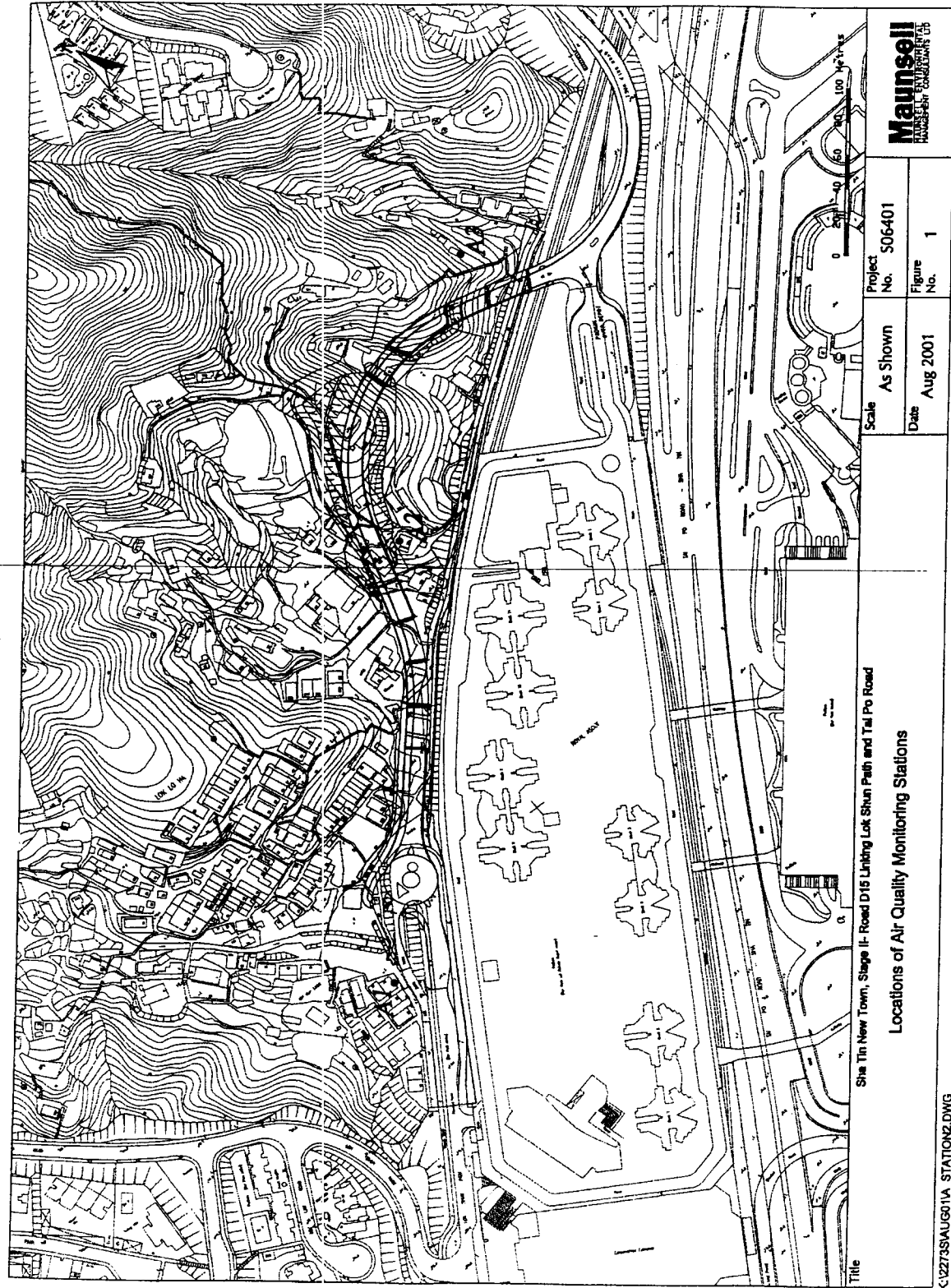


Figure 2.1 Air Quality Monitoring Locations

## 2.2 Noise

### 2.2.1 Monitoring Requirements

Impact noise monitoring was conducted once in every six days at the five designated monitoring locations in accordance with specifications in the EM&A Manual. The duration of sampling was 30 minutes. The Action and Limit levels for noise monitoring are attached in **Appendix A** while the tentative monitoring schedules for the current and next reporting months are attached in **Appendix B**.

### 2.2.2 Monitoring Locations

The impact noise monitoring locations are presented in **Table 2.3** and shown in **Figure 2.2**.

**Table 2.3 Noise Monitoring Locations**

Monitoring Location	Measurement	Location
N1	Façade	Lok Lo Ha Village House No. 3B
N2	Façade	Lok Lo Ha Village House No. 32A
N3	Façade	Royal Ascot Block 9, Flat C
N4	Façade	Lok Lo Ha Village House No. 97
N5	Façade	Village near Royal Ascot

### 2.2.3 Summary of Monitoring Results

In this report, the results for the impact noise monitoring conducted in August 2002 at the five designated locations were evaluated. The monitoring results obtained are summarised in **Table 2.4** below. Detailed results, including graphical plots and relevant field logs, are presented in **Appendix E**. Meanwhile, **Appendix F** shows the meteorological conditions during the monitoring days.

**Table 2.4 Summary of Noise Monitoring Results**

Parameter	Monitoring Location	Range of Results dB(A)	No. of Exceedance	
			Action Levels	Limit Levels
30-minute Noise Measurement (Leq)	N1	62.3 – 71.2	1	0
	N2	67.4 – 71.2		0
	N3	57.9 – 62.6		0
	N4	62.6 – 67.3		0
	N5	58.9 – 62.1		0

As shown in the table above, all noise monitoring data recorded were below the limit levels as set out in **Appendix A**. However, as one documented complaints were received during the reporting month, the Action Level for construction noise was triggered. Further details of the complaints are discussed in **Section 3.3** of this report.

It should be noted that tentative monitoring on 6 August was rescheduled to 7 August as a result of heavy rain. The rescheduled monitoring was carried out in accordance with the requirement of the EM&A manual. Over the reporting period, the local weather conditions during the sampling were mainly sunny or cloudy, while all monitoring was conducted with wind speed of below 1.5 m/s.

Traffic, domestic and construction activities were the major noise sources identified at the five monitoring locations. Meanwhile, the carrying out of piling, excavation works, concrete work and crane operations that related to Powered Mechanical Equipment (PME) were noted at all five monitoring stations during sampling.

Comparing with previous monitoring results, the measured noise levels at all stations were comparable with those recorded in the last reporting period. The highest levels were recorded at Station N1 and N2 (71.2dB(A)) and according to field log, the major noise sources were the operations of tracked excavator and truck dump at Station N1 and bored piling and crane operations at Station N2. The high values could be explained by the fact that it was located relatively close to the construction activities.

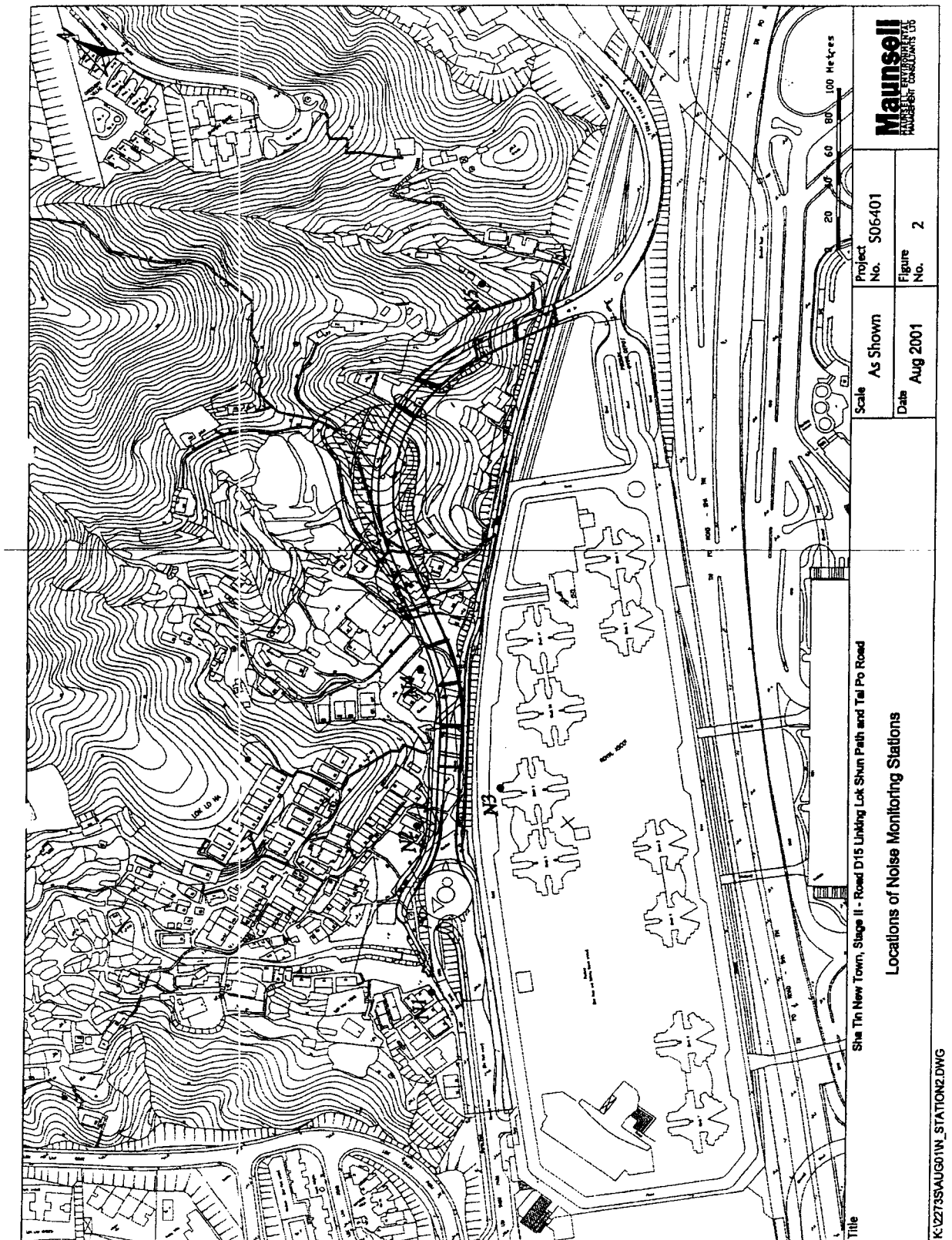


Figure 2.2 Noise Monitoring Locations

### 3. ENVIRONMENTAL AUDIT

#### 3.1 General

In the last monthly EM&A report, a noise complaint was received near the site office and subsequently the following recommendation were raised:

- Sufficient temporary purpose-built noise mitigation measures will need to be placed around PME with high noise level;
- As stated in the Particular Specification (Section 26), no excavator-mounted breaker will be carried out within 125m from nearby noise sensitive receivers

As noted in the site inspections, temporary purpose-built noise barriers were installed near the complained area and no excavator-mounted breaker was used within 125m from nearby noise sensitive receivers. A letter was sent to the complainant (via Police) reporting the investigation results and subsequent actions taken. Copies of the letters in both Chinese and English are attached in **Appendix K**.

One documented complaint on construction noise was received on 7 August 2002 and as a result, the Action Level was triggered. Further details of the complaint are discussed in **Section 3.3**. **Table 3.1** summarises the date and type of site inspections carried out during the reporting period.

**Table 3.1 Summary of Site Inspection during the Reporting Period**

Date	Type of Inspection
8 August 2002 (Thursday)	Regular and ad hoc Site Inspection on Complaint dated 7 August 2002
14 August 2002 (Wednesday)	Regular Site Inspection
22 August 2002 (Thursday)	Regular Site Inspection
28 August 2002 (Wednesday)	Regular Site Inspection

Over the reporting period, the major construction work at the Site include:

- Utility Diversion
- Drainage works
- Piling works
- Form temporary access
- Pre-drill holes for retaining walls & stairs
- Box culvert extension
- Ground Investigation

#### 3.2 Assessment of Environmental Monitoring Results

In this reporting month, apart from the documented complaint on construction noise at the Site, no exceedances in AL Levels were noted from the impact dust and noise monitoring results. The monitoring results were discussed in **Section 2** of the report and are summarised in **Table 3.2** below.

**Table 3.2 Summary of Environmental Monitoring**

Item	Parameter	Monitoring Period	Total No. of Samples Taken (on all stations)	No. of Exceedance	
				Action Levels	Limit Levels
1	24 – hour TSP	01/08/02 to 31/08/02	15	0	0
2	1 – hour TSP	01/08/02 to 31/08/02	45	0	0
3	30-minute Noise Measurement (Leq)	01/08/02 to 31/08/02	25	1 (due to one documented complaint)	0

### 3.3 Environmental Complaints

The police received a complaint from nearby residents in the night-time of 7 August 2002 concerning noise emitted by an operating generator in Road D15 Site near Lok Lo Ha Village. The identity of the complainant was unknown. Consequently, an ad hoc site inspection was carried out on 8 August 2002, jointly by the Engineer, Contractor and the Environmental Team. The following issues were identified during the site inspection:

- At the time of the complaint, a generator was running by accident in the area near Lok Lo Ha Village 85B and;
- The noise complaint was valid as it concerned with construction noise emitted during the restricted hour (1900 to 0700 weekdays);
- As informed by the Contractor and Engineer, the generator was switched off immediately in response to the advice from Police around 8:30pm.

As a result of the investigation, the following issues were reminded and recommended to the contractor:

- Under the Noise Control Ordinance, the carrying out of general construction work using powered mechanical equipment( including generator) during the restricted hours (between 7 p.m. and 7 a.m. or at any time on a general holiday (including Sunday) is prohibited unless a valid Construction Noise Permit is in force;
- A watchmen or site staff should be employed to check daily that all generators and plants are switched off after the permissible working hours.

A letter was sent to the complainant (via Police) reporting the investigation results and subsequent actions taken. Copies of the letters in both Chinese and English are attached in **Appendix K**.

**Table 3.4** shows the complaint summary records for this reporting month while **Table 3.5** summarises the complaint statistics from the commencement of the Project to date. **Appendix I** listed details of all the complaints received on the construction site.

### 3.4 Assessment of Mitigation Measures

**Table 3.3** presented the status of the major mitigation measures identified during site inspection.

**Table 3.3 Summary of Major Mitigation Measures at the Site**

Type	Mitigation Measure	Comments
Noise	Temporary purposed-built Noise Barrier	<ul style="list-style-type: none"> <li>Constructed based on the design in the Construction Noise Mitigation Proposal.</li> </ul>
Water	Wheel Washing Facility	<ul style="list-style-type: none"> <li>Installed and in operation.</li> </ul>
	Sand/Silt Removal Facilities	<ul style="list-style-type: none"> <li>The sand/silt removal facility near the site office was removed as it is no longer required.</li> <li>A larger wastewater treatment system had been installed to treat site-runoffs and water from piling works north-east of Lok Shun Path Roundabout.</li> </ul>
	Measures along stream-banks north-east of Lok Shun Path Roundabout	<ul style="list-style-type: none"> <li>Concrete, sandbags, sump pits and pumps were placed/installed along the banks to prevent construction debris and site run-off from entering the stream untreated.</li> </ul>
	Diversion of Stream Course via drainage pipe	<ul style="list-style-type: none"> <li>Installed at the existing concrete channel.</li> </ul>
Wastewater	Water Reuse at wheel washing facility and site investigation drilling works.	Implemented
Land Contamination	Metal trays are placed underneath stationary machines where there are potential of oil leakage	Implemented
Air	Provide plastic sheeting covers on exposed soils	Satisfactory
	Regular water spraying on areas where there is likely generation of dust	Satisfactory

Large patches of grout were noted within Road D15 Site near Pier A2 construction. It is recommended to the Contractor that the grout be removed and properly disposed of. Furthermore, it was also recommended that more effective barriers should be placed near the grouting works in order to minimise grout spillage.

Bored piling works at retaining wall No.7 will commence in next month. From preliminary investigation, the predicted noise levels may cause noise impacts to the residents, in particular at House No. 86A. As noted by the Contractor, the exact noise level will be measured on site during the piling works. If necessary, temporary purposed-built barriers would need to be installed around the piling works.

**Table 3.4 Environmental Complaints / Enquiry Received in the Reporting Month**

Complaint No.	Received date & Time	Description (inc. location/ nature of complaint)	Follow-up Action Taken	Recommended Mitigation Measures	Status/ Remarks
C02-N2	Night-time, 7 August, 2002	<ul style="list-style-type: none"> <li>Nearby residents complained to police that a generator in Road D15 Site was operating in night-time near Lok Lo Ha Village.</li> <li>Police came to the site to investigate the complaint and inform watchmen to turn off the operating generator at around 8:30pm.</li> <li>The complaint was valid as it concerned with construction noise during the restricted hours.</li> </ul>	<ul style="list-style-type: none"> <li>Ad hoc site inspection was carried out on 8 August 02, jointly with the Engineer and Contractor and ET.</li> <li>The complaint log sheet, the investigation findings and recommendations on mitigation measures were submitted to the Engineer and Contractor.</li> <li>A letter in both English and Chinese, addressing to the complainant, has been sent to the police.</li> </ul>	<p>Mitigation actions:</p> <ul style="list-style-type: none"> <li>Under the Noise Control Ordinance, the carrying out of general construction work using powered mechanical equipment (including generators) during the restricted hours (between 7 p.m. and 7 a.m. or at any time on a general holiday (including Sunday) is prohibited unless a valid Construction Noise Permit is in force;</li> <li>A watchmen or site staff should be employed to check daily that all generators and plants are switched off after the permissible working hours.</li> </ul>	File Closed.

**Table 3.5 Summary of Total Number of Complaints Received to date**

Total No. of Complaints to date	No. of Complaints in this reporting period	No. of Active Complaints	No. of Inactive/Closed Complaints
2	1	N/a	2



#### 4. FUTURE KEY ISSUE AND RECOMMENDATION

There are two environmental issues that will need to be addressed in the next reporting month:

- Some barriers should be provided near the grouting works in order to prevent spreading of grout within the construction site;
- If necessary, temporary purpose-built noise barrier should be placed near the bored piling works at retaining wall No.7 in order to minimise noise impacts to nearby residents.

The updated work program for the following months are attached in **Appendix J** while the monitoring tentative schedule for the next reporting month are attached in **Appendix B**.

---

**APPENDIX A:**

**Action and Limit Levels**

---

**Action and Limit Levels for 24-hour TSP**

Location	Action Level, $\mu\text{g}/\text{m}^3$	Limit Level, $\mu\text{g}/\text{m}^3$
A1	156	260
A2	155	
A3	153	

**Action and Limit Levels for 1-hour TSP**

Location	Action Level, $\mu\text{g}/\text{m}^3$	Limit Level, $\mu\text{g}/\text{m}^3$
A1	371	500
A2	378	
A3	368	

**Action / Limit Levels for Construction Noise**

Time Period	Action Level	Limit Level
0700-1900 hours on normal weekdays	When one documented complaint is received	75* dB(A)
0700-2300 hours on holidays; and 1900-2300 hours on all other days		60/65/70** dB(A)
2300- 0700 hours of next day		45/50/55** dB(A)

\*\* to be selected based on Area Sensitivity Rating  
 Note: If works are to be carried out during restricted hours, the conditions stipulated in the construction noise permit issued by the Noise Control Authority have to be followed.

---

**APPENDIX B:**

**Tentative Schedule for Impact  
Air Quality and Noise  
Monitoring**

---

1. Tentative Schedule for Current Reporting Month – August 2002

Contract No. ST77/01  
 Sha Tin New Town, Stage II  
 Road D15 Linking Lok Shun Path and Tai Po Road

Tentative Time Schedule for Construction Phase Dust Monitoring for Aug 2002

Aug-02	Day	Start Time	
		24-hr TSP	1-hr TSP
1	Thu	x	x
2	Fri	x	x
3	Sat	x	x
4	Sun	x	x
5	Mon	10:30	09:00
6	Tue	x	11:00&14:00
7	Wed	x	
8	Thu	x	x
9	Fri	10:30	09:00
10	Sat	x	x
11	Sun	x	x
12	Mon	x	11:00&14:00
13	Tue	x	x
14	Wed	x	x
15	Thu	10:30	09:00
16	Fri	x	11:00&14:00
17	Sat	x	x
18	Sun	x	x
19	Mon	x	x
20	Tue	x	x
21	Wed	10:30	09:00
22	Thu	x	11:00&14:00
23	Fri	x	x
24	Sat	x	x
25	Sun	x	x
26	Mon	x	x
27	Tue	10:30	09:00
28	Wed	x	11:00 & 14:00
29	Thu	x	x
30	Fri	x	x
31	Sat	x	x

Contract No. ST77/01  
 Sha Tin New Town, Stage II  
 Road D15 Linking Lok Shun Path and Tai Po Road  
 Tentative Time Schedule for Construction Phase Noise Monitoring for Aug 2002

Aug-02	Day	Start Time				
		N1	N2	N3	N4	N5
1	Thu	x	x	x	x	x
2	Fri	x	x	x	x	x
3	Sat	x	x	x	x	x
4	Sun	x	x	x	x	x
5	Mon	x	x	x	x	x
6	Tue	14:30	13:30	11:30	10:45	10:00
7	Wed	x	x	x	x	x
8	Thu	x	x	x	x	x
9	Fri	x	x	x	x	x
10	Sat	x	x	x	x	x
11	Sun	x	x	x	x	x
12	Mon	14:30	13:30	11:30	10:45	10:00
13	Tue	x	x	x	x	x
14	Wed	x	x	x	x	x
15	Thu	x	x	x	x	x
16	Fri	14:30	13:30	11:30	10:45	10:00
17	Sat	x	x	x	x	x
18	Sun	x	x	x	x	x
19	Mon	x	x	x	x	x
20	Tue	x	x	x	x	x
21	Wed	x	x	x	x	x
22	Thu	14:30	13:30	11:30	10:45	10:00
23	Fri	x	x	x	x	x
24	Sat	x	x	x	x	x
25	Sun	x	x	x	x	x
26	Mon	x	x	x	x	x
27	Tue	x	x	x	x	x
28	Wed	14:30	13:30	11:30	10:45	10:00
29	Thu	x	x	x	x	x
30	Fri	x	x	x	x	x
31	Sat	x	x	x	x	x

88-30/R  
 EML  
 10 SEP 2002  
 FILE

## 2. Tentative Schedule for Next Reporting Month – September 2002

FROM :

25606553  
 25606553 ND. : 25606553

Aug. 14 2002 05:41PM P2

Contract No. ST77/01  
 Sha Tin New Town, Stage II  
 Road D15 Linking Lok Shun Path and Tai Po Road

Tentative Time Schedule for Construction Phase Dust Monitoring for September 2002

Sep-02	Day	Start Time	
		24-hr TSP	1-hr TSP
1	Sun	x	x
2	Mon	10:30	09:00
3	Tue	x	11:00&14:00
4	Wed	x	x
5	Thu	x	x
6	Fri	10:30	09:00
7	Sat	x	x
8	Sun	x	x
9	Mon	x	11:00&14:00
10	Tue	x	x
11	Wed	x	x
12	Thu	10:30	09:00
13	Fri	x	11:00&14:00
14	Sat	x	x
15	Sun	x	x
16	Mon	x	x
17	Tue	x	x
18	Wed	10:30	09:00
19	Thu	x	11:00&14:00
20	Fri	x	x
21	Sat	x	x
22	Sun	x	x
23	Mon	x	x
24	Tue	10:30	09:00
25	Wed	x	11:00&14:00
26	Thu	x	x
27	Fri	x	x
28	Sat	x	x
29	Sun	x	x
30	Mon	10:30	09:00

Post-it Fax Note	7671	Date: 8-02	# of pages: 2
To:	Lawrence Tso	From:	Jason
Co. Dist:	EHL	Co.:	Envirotech
Phone #:		Phone #:	
Fax #:	28906901	Fax #:	25606553





---

**APPENDIX C:**

**24-Hour TSP Impact  
Monitoring Results and Plots**

---

### 1. 24-hour TSP Monitoring Results

#### Monitoring Station A1 (Lok Lo Ha Village House No. 3B)

Date	Filter Weight (g)		Flow Rate (m <sup>3</sup> /min.)		Elapse Time		Total Sampling Time (min.)	Conc. (µg/m <sup>3</sup> )	Weather Condition
	Initial	Final	Initial	Final	Initial	Final			
05-August-02	2.8497	2.9091	1.11	1.11	10171.08	10195.08	1440	37	Rainy
09-August-02	2.8433	2.8822	1.13	1.13	10198.08	10222.08	1440	24	Rainy
15-August-02	2.8532	2.9270	1.11	1.11	10225.08	10249.08	1440	46	Sunny
21-August-02	2.8228	2.8710	1.13	1.13	10252.08	10276.08	1440	30	Fine
27-August-02	2.8472	2.9335	1.11	1.11	10279.08	10303.08	1440	54	Fine
								Min	24
								Max	54
								Average	38.2

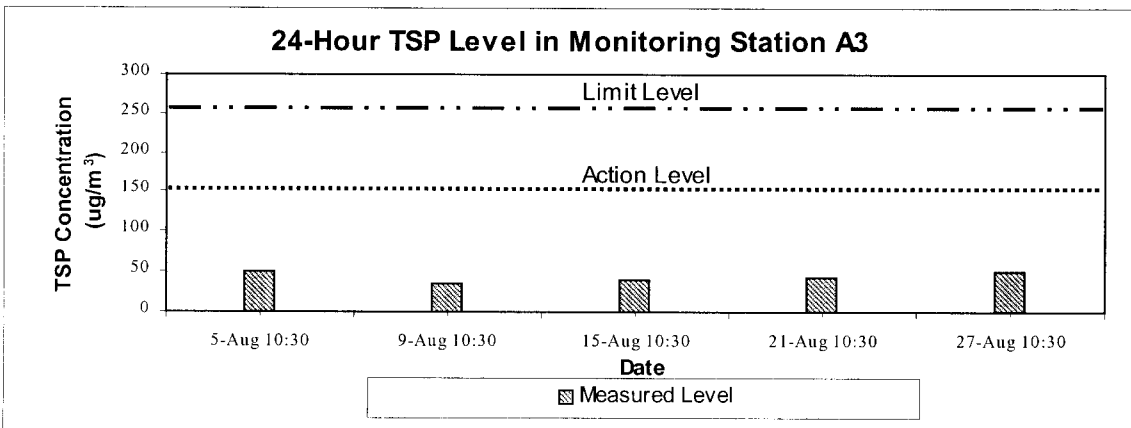
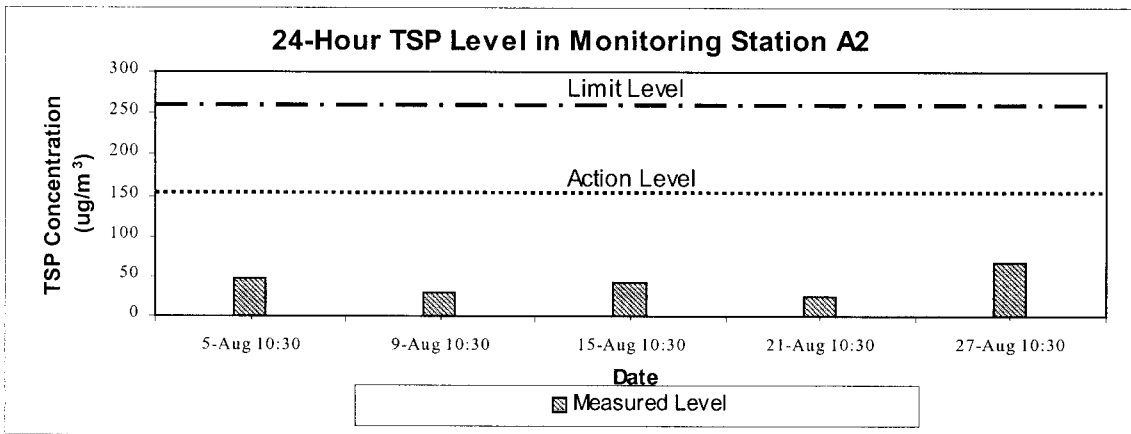
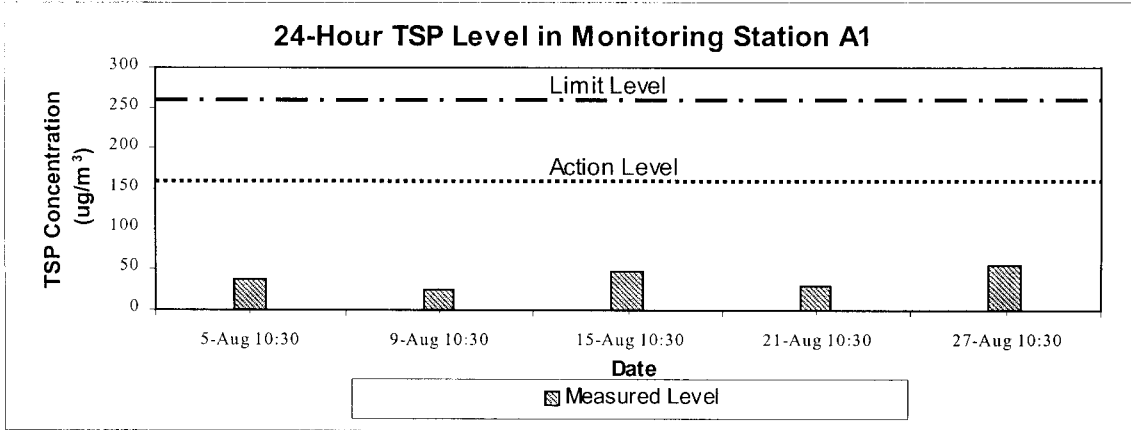
**Monitoring Station A2 (Lok Lo Ha Village House No. 104)**

Date	Filter Weight (g)		Flow Rate (m <sup>3</sup> /min.)		Elapse Time		Total Sampling Time (min.)	Conc. (µg/m <sup>3</sup> )	Weather Condition
	Initial	Final	Initial	Final	Initial	Final			
05-August-02	2.8234	2.9067	1.27	1.27	625.42	649.42	1440	46	Rainy
09-August-02	2.7819	2.8311	1.13	1.13	652.42	676.42	1440	30	Rainy
15-August-02	2.8868	2.9616	1.27	1.27	679.42	703.42	1440	41	Sunny
21-August-02	2.8573	2.8981	1.13	1.13	706.42	730.42	1440	25	Fine
27-August-02	2.7917	2.9147	1.27	1.27	733.42	757.42	1440	67	Fine
							Min	25	
							Max	67	
							Average	41.8	

**Monitoring Station A3 (Village House near Tsun King Road)**

Date	Filter Weight (g)		Flow Rate (m <sup>3</sup> /min.)		Elapse Time		Total Sampling Time (min.)	Conc. (µg/m <sup>3</sup> )	Weather Condition
	Initial	Final	Initial	Final	Initial	Final			
05-August-02	2.7859	2.8759	1.24	1.24	9348.83	9372.83	1440	50	Rainy
09-August-02	2.7746	2.8307	1.13	1.13	9375.83	9399.83	1440	34	Rainy
15-August-02	2.8534	2.9243	1.24	1.24	9402.83	9426.83	1440	40	Sunny
21-August-02	2.8521	2.9214	1.13	1.13	9429.83	9453.83	1440	43	Fine
27-August-02	2.8342	2.9216	1.24	1.24	9456.83	9480.83	1440	49	Fine
								Min	34
								Max	50
								Average	43.2

## 2. Plots for 24-hour Monitoring Results



---

**APPENDIX D:**

**1-Hour TSP Impact  
Monitoring Results and Plots**

---

## 1. 1-hour TSP Monitoring Results

### Station A1 (Lik Lo Ha Village House No. 3B)

Date	Time of sampling	Concentration, $\mu\text{g}/\text{m}^3$
5-August-02	0900 – 1000	246
6-August-02	1100 – 1200	197
6-August-02	1400 – 1500	191
9-August-02	0900 – 1000	153
12-August-02	1100 – 1200	72
12-August-02	1400 – 1500	53
15-August-02	0900 – 1000	119
16-August-02	1100 – 1200	195
16-August-02	1400 – 1500	140
21-August-02	0900 – 1000	139
22-August-02	1100 – 1200	105
22-August-02	1400 – 1500	105
27-August-02	0900 – 1000	179
28-August-02	1100 – 1200	300
28-August-02	1400 – 1500	108
Average		153.5
Min		53
Max		300

### Station A2 (Lik Lo Ha Village House No. 104)

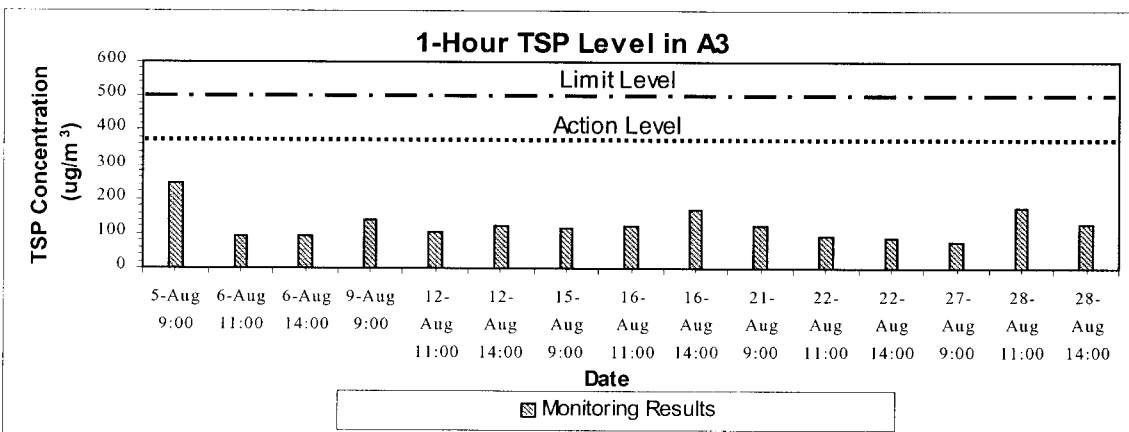
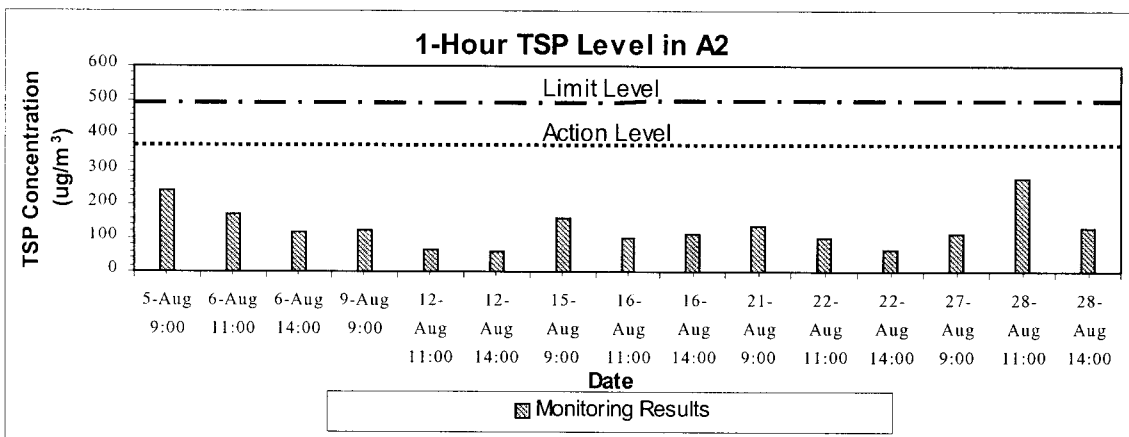
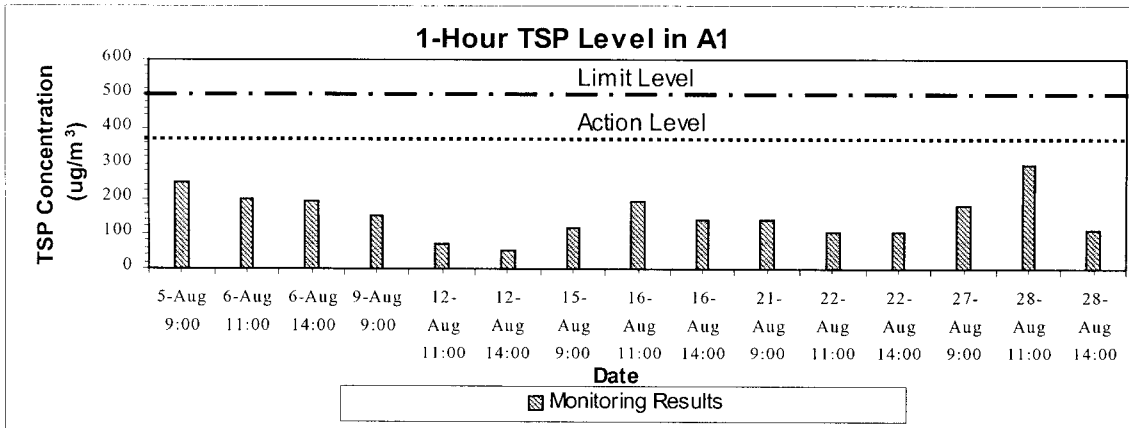
Date	Time of sampling	Concentration, $\mu\text{g}/\text{m}^3$
5-August-02	0900 – 1000	239
6-August-02	1100 – 1200	167
6-August-02	1400 – 1500	118
9-August-02	0900 – 1000	124
12-August-02	1100 – 1200	63
12-August-02	1400 – 1500	58
15-August-02	0900 – 1000	160
16-August-02	1100 – 1200	100
16-August-02	1400 – 1500	109
21-August-02	0900 – 1000	136
22-August-02	1100 – 1200	97
22-August-02	1400 – 1500	65
27-August-02	0900 – 1000	108
28-August-02	1100 – 1200	272
28-August-02	1400 – 1500	126
Average		129.5
Min		58
Max		272

**Station A3 (Village House near Tsun King Road)**

Date	Time of sampling	Concentration, $\mu\text{g}/\text{m}^3$
5-August-02	0900 – 1000	245
6-August-02	1100 – 1200	94
6-August-02	1400 – 1500	93
9-August-02	0900 – 1000	142
12-August-02	1100 – 1200	105
12-August-02	1400 – 1500	121
15-August-02	0900 – 1000	117
16-August-02	1100 – 1200	122
16-August-02	1400 – 1500	167
21-August-02	0900 – 1000	121
22-August-02	1100 – 1200	94
22-August-02	1400 – 1500	88
27-August-02	0900 – 1000	73
28-August-02	1100 – 1200	172
28-August-02	1400 – 1500	129
	Average	125.5
	Min	73
	Max	245



## 2. Plots of 1-hour TSP Monitoring Results



---

**APPENDIX E:**

**Daytime 07:00 -19:00Hrs  
Impact Noise Monitoring  
Results and Plots**

---

## 1. Noise Monitoring Results

### Monitoring Station N1 (Lok Lo Ha Village House No.3B)

Date	Noise Level for 30 min, dB(A)			
	Time of Sampling	L <sub>eq</sub>	L <sub>10</sub>	L <sub>90</sub>
07-August-02	1430 – 1500	62.3	64.6	58.9
12-August-02	1430 – 1500	71.2	72.1	64.8
16-August-02	1430 – 1500	68.4	70.7	65.4
22-August-02	1430 – 1500	68.1	69.4	65.5
28-August-02	1430 – 1500	69.7	72.1	66.4

Min	62.3	64.6	58.9
Max	71.2	72.1	66.4

### Monitoring Station N2 (Lok Lo Ha Village House No.32A)

Date	Noise Level for 30 min, dB(A)			
	Time of Sampling	L <sub>eq</sub>	L <sub>10</sub>	L <sub>90</sub>
07-August-02	1330 – 1400	67.4	70.4	62.0
12-August-02	1400 – 1430	69.4	72.4	65.1
16-August-02	1330 – 1400	67.6	69.2	65.8
22-August-02	1330 – 1400	71.2	75.7	61.3
28-August-02	1330 – 1400	69.7	73.0	62.8

Min	67.4	69.2	61.3
Max	71.2	75.7	65.8

### Monitoring Station N3 (Royal Ascot Block 9, Flat C)

Date	Noise Level for 30 min, dB(A)			
	Time of Sampling	L <sub>eq</sub>	L <sub>10</sub>	L <sub>90</sub>
07-August-02	1130 – 1200	59.4	62.5	51.5
12-August-02	1130 – 1200	61.3	63.8	53.5
16-August-02	1130 – 1200	57.9	60.1	51.1
22-August-02	1130 – 1200	57.9	61.4	50.0
28-August-02	1130 – 1200	62.6	65.1	53.8

Min	57.9	60.1	50.0
Max	62.6	65.1	53.8

**Monitoring Station N4 (Lok Lo Ha Village House No.97)**

Date	Noise Level for 30 min, dB(A)			
	Time of Sampling	L <sub>eq</sub>	L <sub>10</sub>	L <sub>90</sub>
07-August-02	1045 – 1115	62.7	64.9	59.2
12-August-02	1045 – 1115	64.2	66.7	62.0
16-August-02	1045 – 1115	62.6	63.3	58.6
22-August-02	1045 – 1115	67.3	69.9	60.5
28-August-02	1045 – 1015	63.3	64.9	61.1

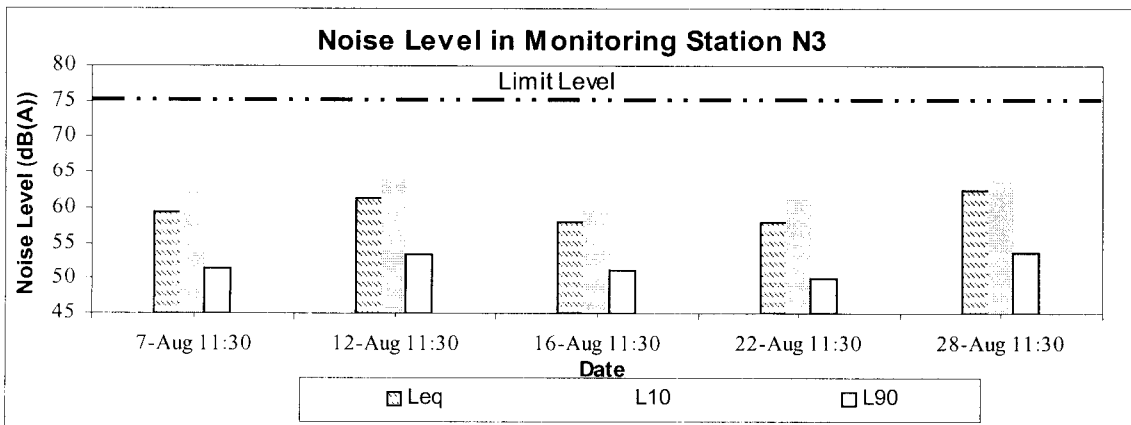
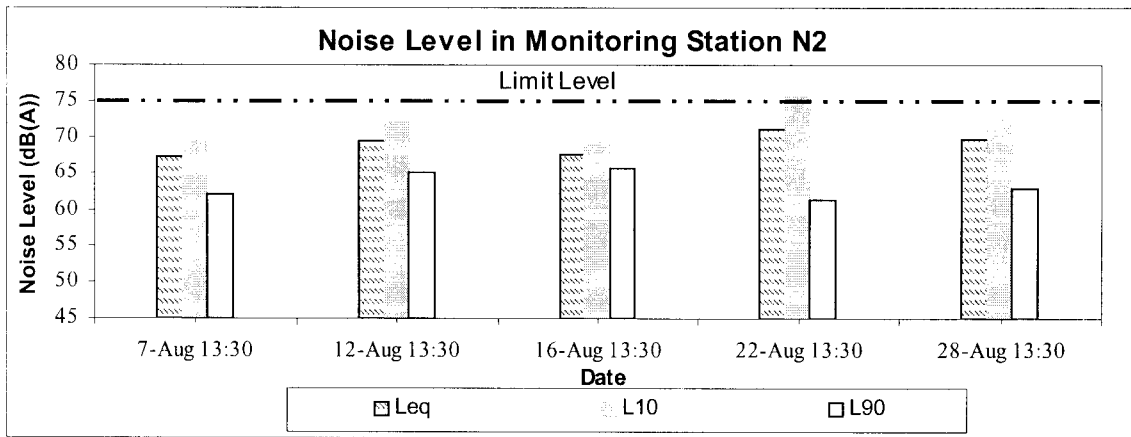
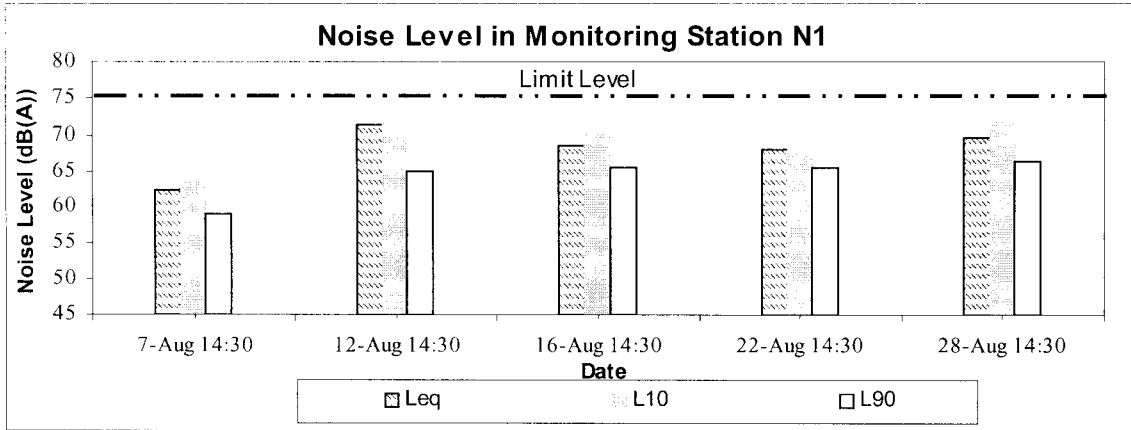
Min                    62.6                    63.3                    58.6  
 Max                    67.3                    69.9                    62.0

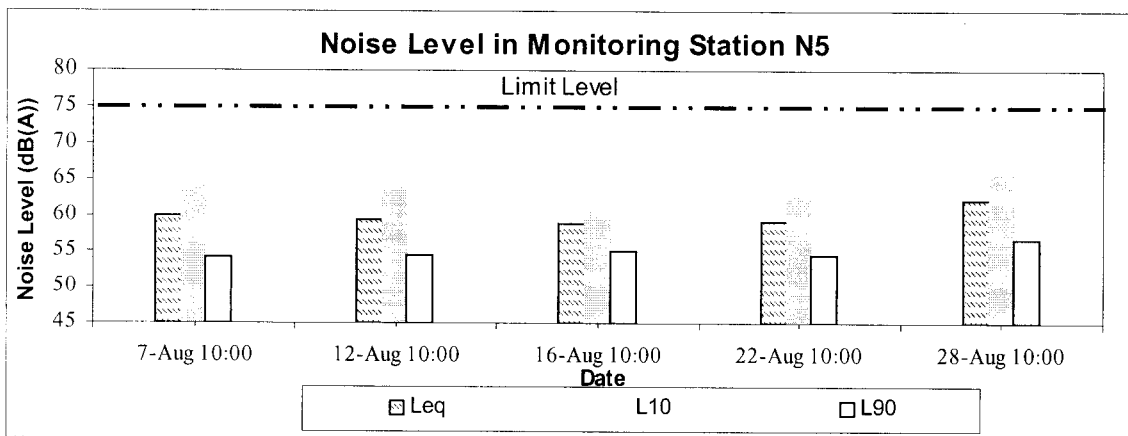
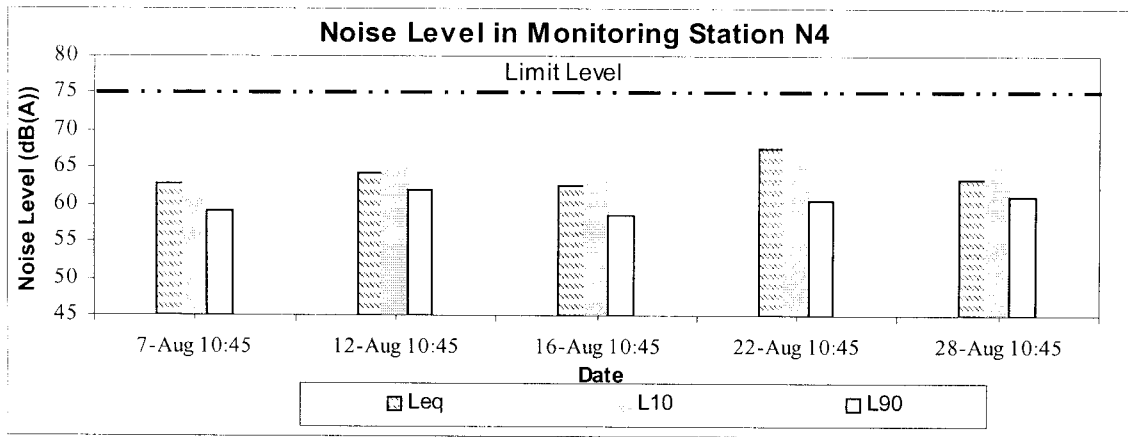
**Monitoring Station N5 (Village House near Royal Ascot)**

Date	Noise Level for 30 min, dB(A)			
	Time of Sampling	L <sub>eq</sub>	L <sub>10</sub>	L <sub>90</sub>
07-August-02	1000 – 1030	59.9	64.4	54.3
12-August-02	1000 – 1030	59.4	63.9	54.5
16-August-02	1000 – 1030	58.9	62.3	55.1
22-August-02	1000 – 1100	59.2	62.9	54.4
28-August-02	1000 – 1030	62.1	65.6	56.6

Min                    58.9                    62.3                    54.3  
 Max                    62.1                    65.6                    56.6

## 2. Plots of Noise Monitoring Results





---

---

**APPENDIX F:**

**Weather Conditions During  
Monitoring Periods**

---

---

**Weather Condition during Monitoring Period  
(From 5 to 28 August 2002)**

Date	Weather	Mean Air Temperature (°C)	Wind Speed (m/s)	Mean Relative Humidity (%)
5-August-02	Rainy	27.1	<1.0	84
6-August-02	Rainy	27.8	<1.0	84
7-August-02	Cloudy	28.7	N/a	82
9-August-02	Rainy	26.6	<1.0	92
12-August-02	Cloudy	28.3	<1.3	84
15-August-02	Sunny	29.0	<1.0	77
16-August-02	Fine	29.0	<1.0	76
21-August-02	Fine	28.0	<0.7	88
22-August-02	Fine	29.0	<0.9	80
27-August-02	Fine	29.7	N/a	79
28-August-02	Fine	29.5	<1.0	75



---

**APPENDIX G:**

**Event and Action Plan for Air  
Quality and Noise**

---

## Event / Action Plan for Air Quality

EVENT	ACTION		
	ET	Engineer	CONTRACTOR
<b>ACTION LEVEL</b>			
1. Exceedance for one sample	<ol style="list-style-type: none"> <li>1. Identify source;</li> <li>2. Inform the Engineer and Contractor;</li> <li>3. Repeat measurement to confirm finding; and</li> <li>4. Increase monitoring frequency to daily.</li> </ol>	<ol style="list-style-type: none"> <li>1. Notify Contractor; and</li> <li>2. Check monitoring data and Contractor's working methods.</li> </ol>	<ol style="list-style-type: none"> <li>1. Rectify any unacceptable practice, if any; and</li> <li>2. Amend working methods if appropriate.</li> </ol>
2. Exceedance for two or more consecutive samples	<ol style="list-style-type: none"> <li>1. Identify source;</li> <li>2. Inform the Engineer and Contractor;</li> <li>3. Repeat measurement to confirm findings;</li> <li>4. Increase monitoring frequency to daily.</li> <li>5. Discuss with Engineer for remedial actions required;</li> <li>6. If exceedance continues, arrange meeting with the engineer; and</li> <li>7. If exceedance stops, cease additional monitoring.</li> </ol>	<ol style="list-style-type: none"> <li>1. Confirm receipt of notification of failure in writing;</li> <li>2. Notify Contractor;</li> <li>3. Check monitoring data and Contractor's working methods;</li> <li>4. Discuss with ET and Contractor on potential remedial actions; and</li> <li>5. Ensure remedial measures properly implemented.</li> </ol>	<ol style="list-style-type: none"> <li>1. Submit proposals for mitigation measures to the Engineer within 3 working days of notification;</li> <li>2. Implement the agreed proposals; and</li> <li>3. Amend proposal if appropriate.</li> </ol>
<b>LIMIT LEVEL</b>			
1. Exceedance for one sample	<ol style="list-style-type: none"> <li>1. Identify source;</li> <li>2. Inform the Engineer and Contractor;</li> <li>3. Repeat measurement to confirm findings;</li> <li>4. Increase monitoring frequency to daily;</li> <li>5. Assess effectiveness of Contractor's remedial actions and keep EPD and the Engineer informed of results.</li> </ol>	<ol style="list-style-type: none"> <li>1. Confirm receipt of notification of failure in writing;</li> <li>2. Notify Contractor;</li> <li>3. Check monitoring data and Contractor's working methods;</li> <li>4. Discuss with ET and Contractor on potential remedial actions; and</li> <li>5. Ensure remedial action properly implemented.</li> </ol>	<ol style="list-style-type: none"> <li>1. Take immediate action to avoid further exceedance;</li> <li>2. Submit proposals for remedial actions to the Engineer within 3 working days of notification;</li> <li>3. Implement the agreed proposals; and</li> <li>4. Amend proposal if appropriate.</li> </ol>
2. Exceedance for two or more consecutive samples	<ol style="list-style-type: none"> <li>1. Identify source;</li> <li>2. Inform the Engineer and Contractor;</li> <li>3. Repeat measurement to confirm findings;</li> <li>4. Increase monitoring frequency to daily.</li> <li>5. Investigate the causes of exceedance;</li> <li>6. Arrange meeting with EPD and the Engineer to discuss the remedial actions to be taken;</li> <li>7. Assess effectiveness of Contractor's remedial actions and keep EPD and the Engineer informed of the results; and</li> <li>8. If exceedance stops, cease additional monitoring</li> </ol>	<ol style="list-style-type: none"> <li>1. Confirm receipt of notification of failure in writing;</li> <li>2. Notify Contractor;</li> <li>3. Carry out analysis of Contractor's working procedures to determine possible mitigation to be implemented;</li> <li>4. Discuss among ET and Contractor on potential remedial actions;</li> <li>5. Review Contractor's remedial action whenever necessary to assure their effectiveness; and</li> <li>6. If exceedance continues, consider what portion of the work is responsible and instruct the Contractor to stop portion of work until the exceedance is abated.</li> </ol>	<ol style="list-style-type: none"> <li>1. Take immediate action to avoid further exceedance;</li> <li>2. Submit proposals for remedial actions to the Engineer within 3 working days of notification;</li> <li>3. Implement the agreed proposals;</li> <li>4. Resubmit proposals if problem still not under control;</li> <li>5. Stop the relevant portion of works as determined by the Engineer until the exceedance is abated.</li> </ol>

**Event / Action Plan for Construction Noise**

EVENT	ACTION	
	ET	Contractor
Action Level	<ol style="list-style-type: none"> <li>1. Notify the Engineer and Contractor;</li> <li>2. Analyze investigation;</li> <li>3. Require Contractor to propose measures for the analyzed noise problem; and</li> <li>4. Increase monitoring frequency to check mitigation effectiveness.</li> </ol>	<ol style="list-style-type: none"> <li>1. Submit noise mitigation proposals to Environmental Team and the Engineer; and</li> <li>2. Implement noise mitigation proposals.</li> </ol>
Limit Level	<ol style="list-style-type: none"> <li>1. Notify the Engineer and Contractor;</li> <li>2. Notify EPD; and</li> <li>3. Require Contractor to implement mitigation measures; and increase monitoring frequency to check mitigation effectiveness.</li> </ol>	<ol style="list-style-type: none"> <li>1. Implement mitigation measures; and</li> <li>2. Prove to Environmental Team and the Engineer effectiveness of measures applied.</li> </ol>

---

---

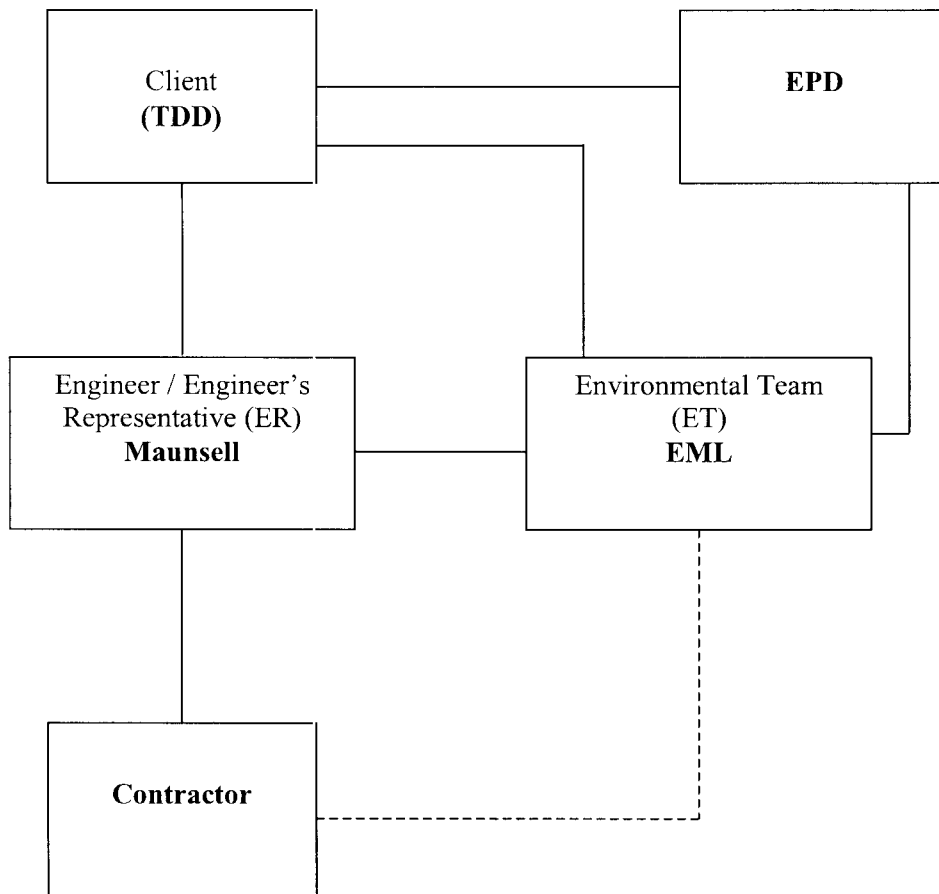
**APPENDIX H:**

**Project Organisation and  
Contacts of Key Personnel**

---

---

**Figure H.1: Project Management Structure**



**Contacts of Key Personnel:**

Organisation	Nature of Duty	Contact Personnel	Contact Number	
			Telephone	Fax
Territory Development Department (TDD)	Client	Mr. Stephen Wong	2301-1376	2721-8630
Maunsell Consultants Asia Ltd. (MCAL)	Engineer	Mr. Alan Kwong	2602-3433	2691-2649
Environmental Management Ltd. (EML)	Environmental Team	Mr. Lawrence Tsui	2890-1090	2890-6901

---

**APPENDIX I:**

**Summary Records of  
Complaints Received**

---

Complaint No.	Received date & Time	Description (inc. location/ nature of complaint)	Follow-up Action Taken	Recommended Measures	Mitigation	Status/ Remarks
C02-N1	Morning, 29/7/2002	Around 9:30am on 29/7/02, police came on site to investigate a complaint of noise pollution emitted during rock breaking which carried out by the Contractor near the Site Office (near the box culvert and north Lok Shun Path Roundabout). The Contractor immediately halted the activity in response to police's advice	<ul style="list-style-type: none"> <li>Ad hoc site inspection was carried out on 31/7/02, jointly with the Engineer and Contractor</li> <li>The complaint log sheet, the investigation findings and recommendations on mitigation measures were submitted to the Engineer and Contractor.</li> <li>A letter, addressing to the complainant, will be sent to the police.</li> </ul>	<p>Mitigation actions:</p> <ul style="list-style-type: none"> <li>Excavator-mounted breaker shall not be carried out within 125m from any nearby noise sensitive receivers and;</li> <li>Temporary purposed built barrier should be installed whenever there are high noise level construction activities.</li> </ul>	The complaint was considered as ad hoc rather than continuous. It is therefore considered not necessary to increase the noise monitoring frequency  File Closed.	
C02-N2	Night-time, 7 August, 2002	<ul style="list-style-type: none"> <li>Nearby residents complained to police that a generator in Road D15 Site was operating in night-time near Lok Lo Ha Village.</li> <li>Police came to the site to investigate the complaint and inform watchmen to turn off the operating generator at around 8:30pm.</li> <li>The complaint was valid as it concerned with construction noise during the restricted hours.</li> </ul>	<ul style="list-style-type: none"> <li>Ad hoc site inspection was carried out on 8 August 02, jointly with the Engineer and Contractor and ET.</li> <li>The complaint log sheet, the investigation findings and recommendations on mitigation measures were submitted to the Engineer and Contractor.</li> <li>A letter in both English and Chinese, addressing to the complainant, has been sent to the police.</li> </ul>	<p>Mitigation actions:</p> <ul style="list-style-type: none"> <li>Under the Noise Control Ordinance, the carrying out of general construction work using powered mechanical equipment (including generators) during the restricted hours (between 7 p.m. and 7 a.m. or at any time on a general holiday (including Sunday) is prohibited unless a valid Construction Noise Permit is in force;</li> <li>A watchmen or site staff should be employed to check daily that all generators and plants are switched off after the permissible working hours.</li> </ul>	File Closed.	

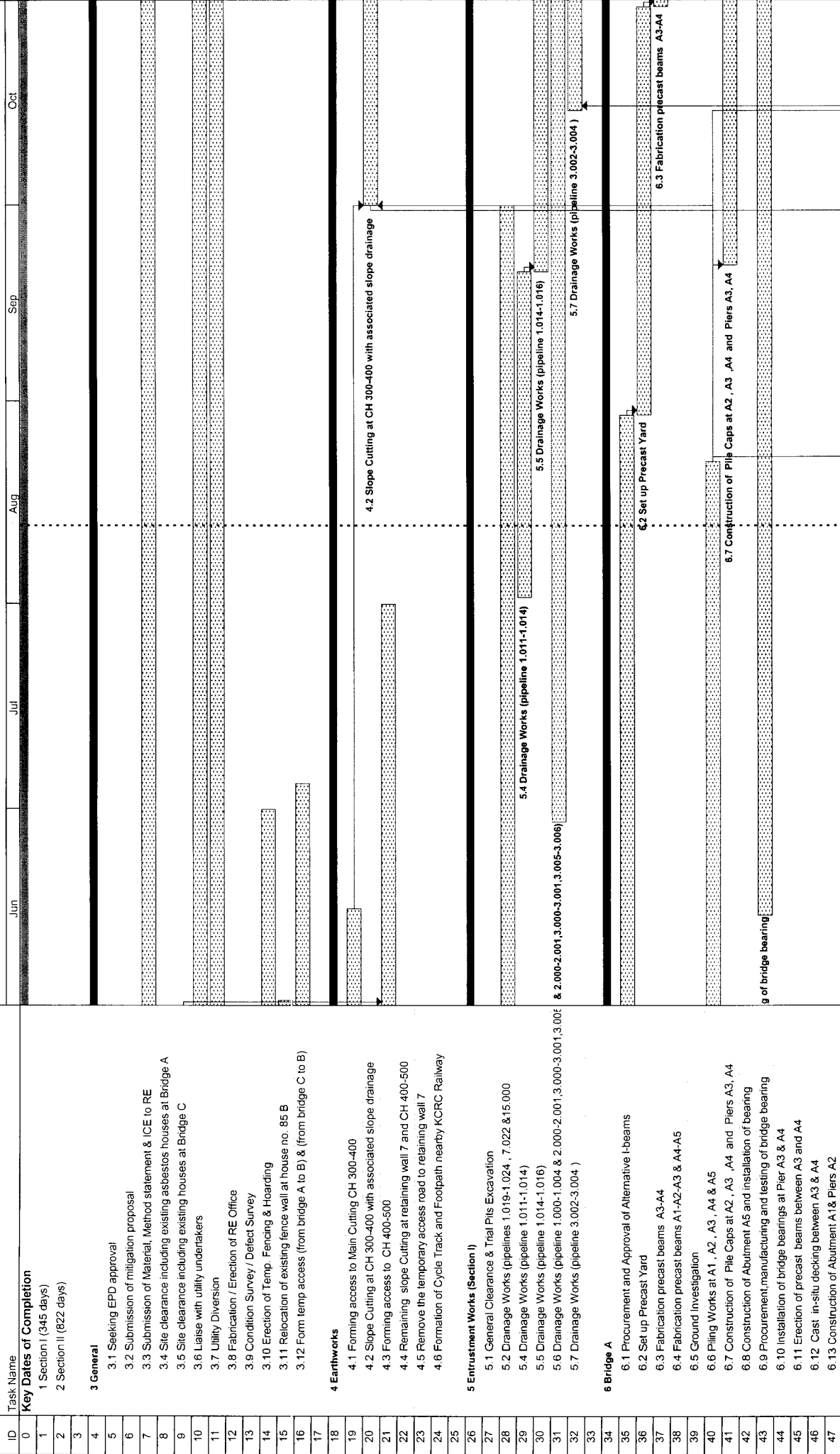
---

**APPENDIX J:**

**Updated Construction  
Program**

---



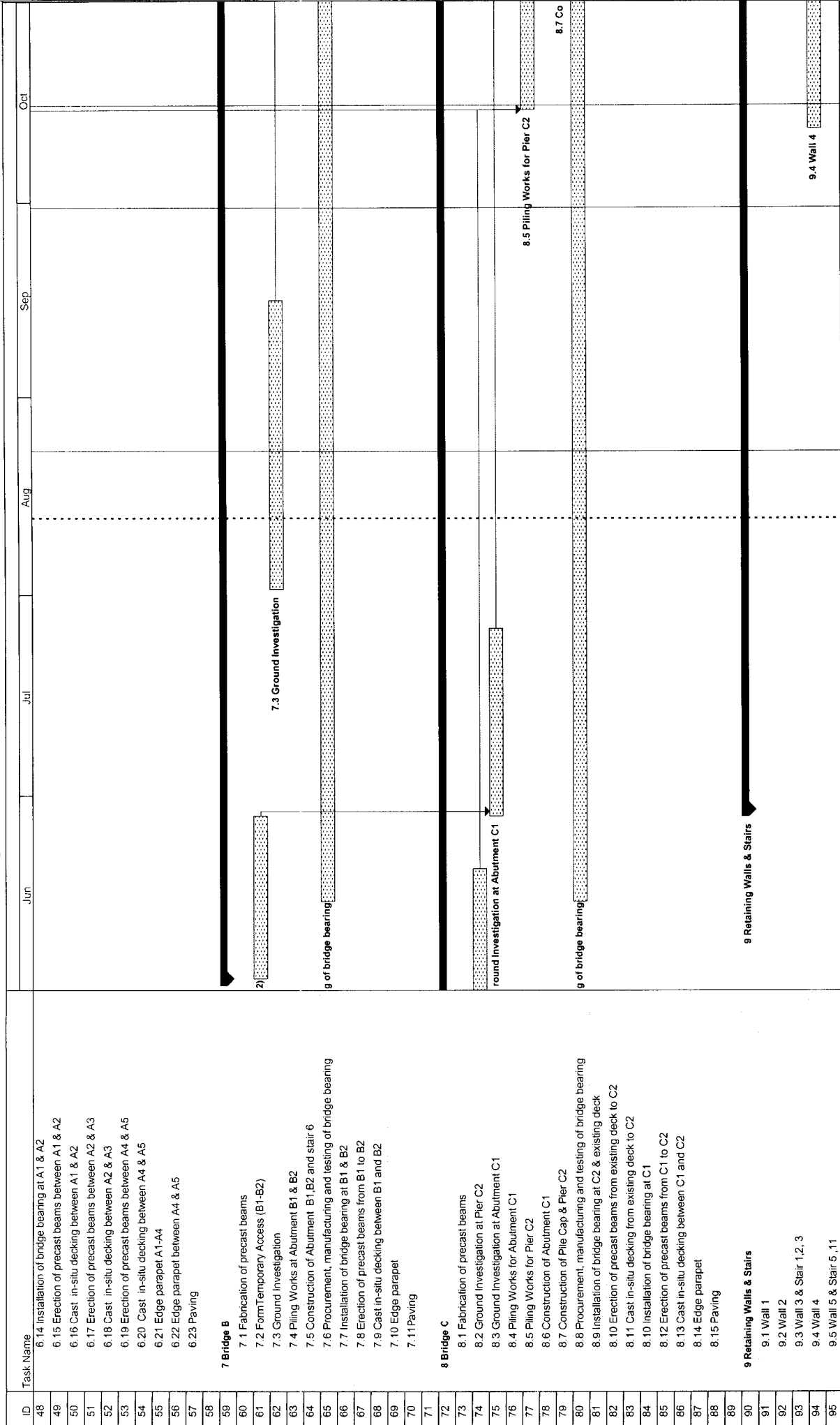


Project: Key Dates of Completion  
Date: Tue 8/13/02

Task Progress Legend:

- Task: [Patterned Bar]
- Critical Task: [Solid Black Bar]
- Milestone: [Diamond]
- Summary: [Dotted Bar]
- Task Progress: [Arrow]
- Critical Task Progress: [Thick Arrow]
- Summary: [Dotted Bar]
- Rolled Up Task: [Patterned Bar]
- Rolled Up Critical Task: [Solid Black Bar]
- Rolled Up Milestone: [Diamond]
- External Tasks: [Dotted Bar]
- Split: [Dotted Bar]

Page 1

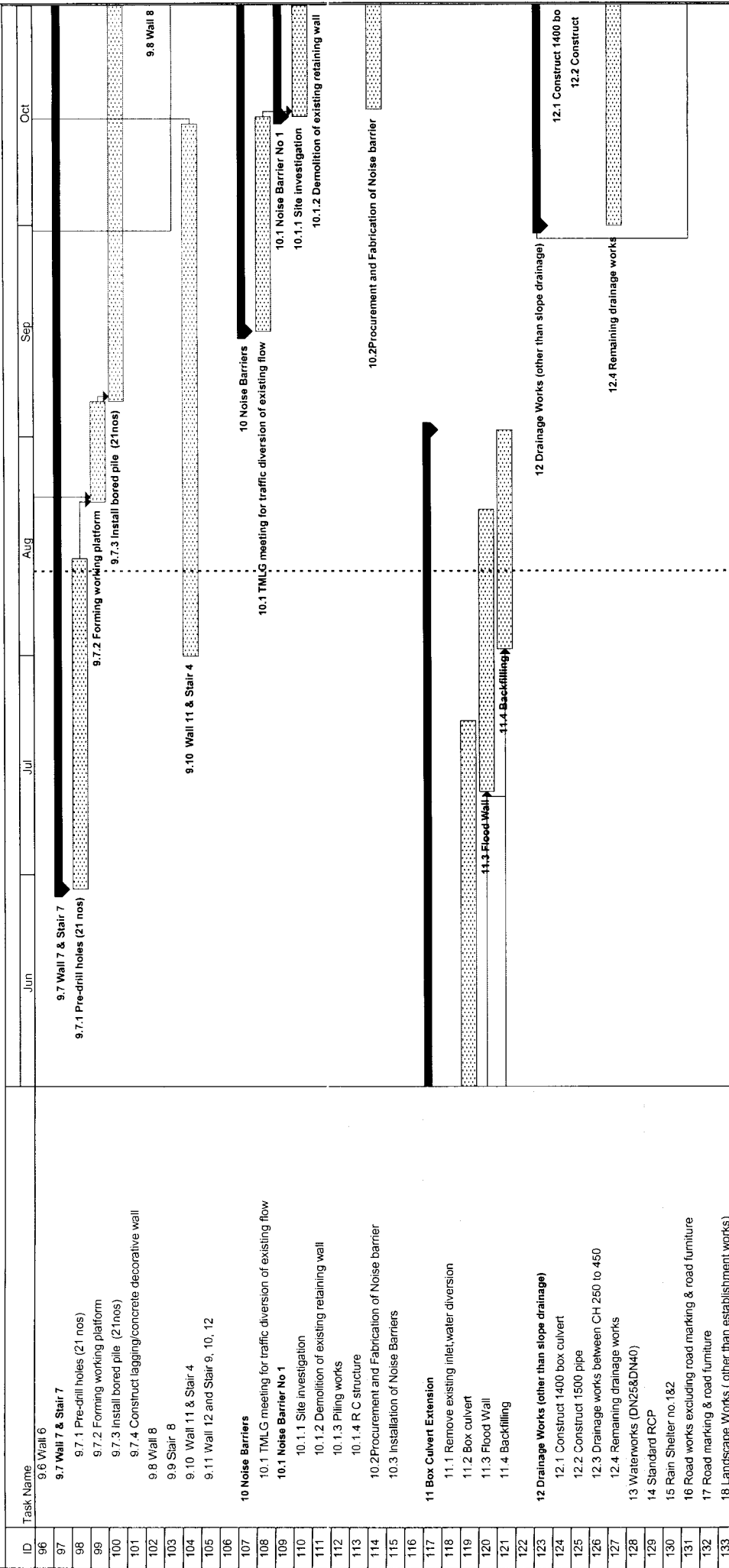


Project: Key Dates of Completion  
Date: Tue 8/13/02

Task Progress Legend:

- Task: [Dotted pattern]
- Task Progress: [Solid black bar]
- Critical Task: [Dotted pattern with vertical lines]
- Critical Task Progress: [Dotted pattern with vertical lines and solid black bar]
- Milestone: [Diamond symbol]
- Summary: [Dotted pattern with horizontal lines]
- Rolled Up Task: [Dotted pattern with horizontal lines]
- Rolled Up Critical Task: [Dotted pattern with vertical lines and horizontal lines]
- Rolled Up Milestone: [Diamond symbol]
- External Tasks: [Dotted pattern with diagonal lines]
- Split: [Vertical line]

Project Summary: [Arrow pointing right]



Project: Key Dates of Completion  
Date: Tue 6/13/02

Task: [Pattern] Task Progress: [Pattern] Critical Task: [Pattern] Milestone: [Pattern] Summary: [Pattern]

Rollled Up Task: [Pattern] Rollled Up Critical Task: [Pattern] Rollled Up Milestone: [Pattern]

External Tasks: [Pattern] Project Summary: [Pattern]

---

**APPENDIX K:**

**Letters to the Complainant**

---



Environmental Management Limited  
英 華 環 保 有 限 公 司

BY POST

29 August 2002

Our Ref: 882-000030/M10/600/78

To Whom It May Concern

Dear Sir/Madam,

**Sha Tin New Town, Stage II, Contract No. ST77/01  
Road D15 Linking Lok Shun Path and Tai Po Road  
Construction Noise Complaint on 29 July 2002**

A complaint on the construction noise in the captioned construction site (*Road D15*) was received on 29 July 2002. The complained noise was related to rock breaking activities using an excavator mounted breaker in the area west of Lok Shun Path Roundabout. Subsequently, a site inspection was carried out on the next day to investigate the matter. In order to minimise noise impacts to nearby residents, the Contactor has agreed not to carried out rock breaking activities using excavator mounted breakers near the complained area in the future.

We appreciate your patience and understanding for any inconvenience caused by the construction activities.

Yours sincerely,

Environmental Team Leader



Environmental Management Limited  
英 華 環 協 管 理 有 限 公 司

參攷編號: 882-000030/M10/600/78

沙田新市鎮第二期, 合約編號: ST77/01  
連接樂信徑及大埔公路之 D15 路  
二零零二年七月二十九日的建築噪音投訴

敬啟者:

本小組於二零零二年七月二十九日接獲有關 D15 路建築噪音的投訴。投訴的噪音個案為於樂信徑迴旋處西側使用安裝在挖土機上的破碎機進行巖石軋碎。在收到投訴後的第二天, 本小組即前往現場進行調查。為了減小建築噪音對附近居民的影響, 承建商已經同意在投訴區域附近不再使用安裝在挖土機上的破碎機進行巖石軋碎。

對施工活動帶來的不便之處, 敬請原諒。

此致  
有關人士

*Lawrence* (代行)

環境小組組長 謹啟  
二零零二年八月二十九日





Environmental Management Limited  
A. S. H. H. S. P. T. T. P. S. S. S.

BY POST

29 August 2002

Our Ref: 882-000030/M10/600/79

**To Whom It May Concern**

Dear Sir/Madam,

**Sha Tin New Town, Stage II, Contract No. ST77/01  
Road D15 Linking Lok Shun Path and Tai Po Road  
Construction Noise Complaint on 7 August 2002**

A complaint on the construction noise in the captioned construction site (*Road D15*) was received on 7 August 2002. The complained noise was related to the operation of a generator during night-time hours. Subsequently, a site inspection was conducted to investigate the matter and it was concluded that site staff had forgot to switch off the generator during that night while no construction activities were carried out at that time. In order to minimise noise impacts to nearby residents, the Contractor had agreed to employ a watchman or site staff to check daily that all generators and plants are switched off during the restricted hours (that is between 7 p.m. and 7 a.m. or at any time on a general holiday) unless a valid Construction Noise Permit is in force.

We appreciate your patience and understanding for any inconvenience caused by the construction activities.

Yours sincerely,

Environmental Team Leader



Environmental Management Limited, 211 Gloucester Road,  
Causeway Bay, Hong Kong  
Tel: (852) 2511 1111  
Fax: (852) 2511 1111

Telephone: (852) 2511 1111  
Facsimile: (852) 2511 1111

Delivering Innovative Projects and Solutions Worldwide

An AMM Group Company



Environmental Management Limited  
美華環境協管理有限公司

參攷編號: 882-000030/M10/600/79


沙田新市鎮第二期, 合約編號: ST77/01  
連接樂信徑及大埔公路之 D15 路  
二零零二年八月七日的建築噪音投訴

敬啟者:

本小組於二零零二年八月七日接獲有關 D15 路建築噪音的投訴。投訴的噪音個案為於夜間運作的發電機。在收到投訴後, 本小組即前往現場進行調查, 發現現場員工忘記把發電機關掉, 而當晚沒有工程在進行中。為了減小建築噪音對附近居民的影響, 承建商已同意僱用一個看守人或現場員工每天進行檢查, 確保在限制時間內(即晚上七時至翌日上午七時, 或在公眾假期)關閉所有發電機和其它機動設備(除非取得有效的《建築噪音許可證》)。

對施工活動帶來的不便之處, 敬請原諒。

此致  
有關人士

 (代行)

環境小組組長 謹啟  
二零零二年八月二十九日



1908 Windsor House, 311 Gloucester Road  
Causeway Bay, Hong Kong  
香港銅鑼灣告士打道 311 號  
文嘉士樓 1908 室

Telephone: (352) 2890 1090  
Facsimile: (352) 2890 6901

Delivering Innovative Projects and Solutions Worldwide

An MWH company  
美華環境

