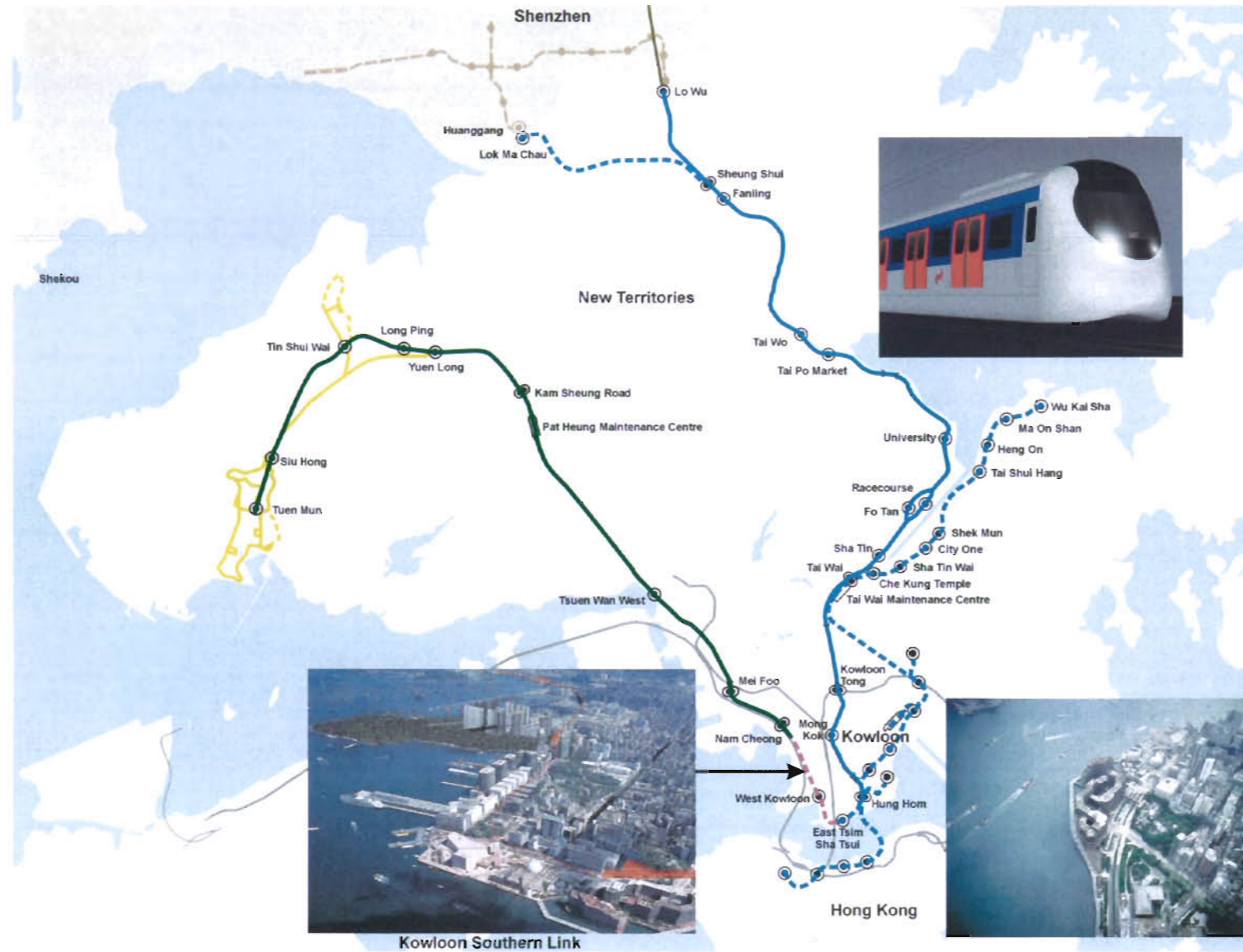


KSL – Kowloon Southern Link

Detailed Landscape As-Built Drawings

Ref: Environmental Permit No. EP-215/2005/B

September 2009



This document conforms to the findings of the Kowloon Southern Link EIA Report

Certified by

Environmental Team Leader

PROPOSED PLANTING SCHEDULE

ABB	SCIENTIFIC NAME	CHINESE NAME	SPACING (mm)	SIZE (mm) HT x SP	REMARK	Drawing No.	QTY
TREE							
CAL. VIM.	CALLISTEMON VIMINALIS	串錢柳	AS SHOWN	SEMI-MATURE	BALL & BURLAP	KOB200/LB/S3500.S3520	6
CAS. SUR.	CASSIA SURATTENSIS	黃槐	AS SHOWN	SEMI-MATURE	BALL & BURLAP	KOB200/LB/S3500.T3502.C3508	3
GRE.ROB.	GREVILLEA ROBUSTA	銀棒	AS SHOWN	SEMI-MATURE	BALL & BURLAP	KOB200/LB/S3500	0
ARA.HET.	ARAUCARIA HETEROPHYLLA	南洋杉	AS SHOWN	HEAVY STANDARD	BALL & BURLAP	KOB200/LB/T3502.C3508	0
BOM.MAL.	BOMBAX MALABARICUM	木棉	AS SHOWN	HEAVY STANDARD	BALL & BURLAP	KOB200/LB/W3504.LC/W3529.LD/W3530	4
CAS.FIS.	CASSIA FISTULA	臘腸樹(豬腸豆)	AS SHOWN	HEAVY STANDARD	BALL & BURLAP	KOB200/LB/W3504.LC/W3529	2
CAS.SIA.	CASSIA SIAMEA	鐵刀木	AS SHOWN	HEAVY STANDARD	BALL & BURLAP	KOB200/LB/W3504.LC/W3528	1
CIN. BUR.	CINNAMOMUM BURMANII	陰香	AS SHOWN	HEAVY STANDARD	BALL & BURLAP	KOB200/LB/T3502.W3504.C3508.LC/W3528.LD/W3531.W3532	115
FIC.BEN.'VAR'	FICUS BENJAMINA 'VARIEGATA'	垂葉榕	AS SHOWN	HEAVY STANDARD	BALL & BURLAP	KOB200/LB/W3504.LD/W3532	0
FIC.MIC.'YELLOW STRIP'	FICUS MICROCARPA 'YELLOW STRIP'	花葉垂榕	AS SHOWN	HEAVY STANDARD	BALL & BURLAP	KOB200/LB/T3501.W3503.W3504.LD/W3531.W3532	10
MEL. LEU.	MELALEUCA LEUCADENDRON	白千層	AS SHOWN	HEAVY STANDARD	BALL & BURLAP	KOB200/LB/T3502.C3508	4
ROY. REG.	ROYSTONEA REGIA	王棕	AS SHOWN	HEAVY STANDARD	BALL & BURLAP	KOB200/LB/T3502.W3504.C3508.LC/W3528	16
SPA.CAM.	SPATHODEA CAMPANULATA	火焰木	AS SHOWN	HEAVY STANDARD	BALL & BURLAP	KOB200/LB/W3503.W3504.LD/W3530	23
TOTAL							184
PALM							
CAR.OCH.	CARYOTA OCHLANDRA	魚尾葵	1000	1500 X 900	POTTED	KOB200/LB/T3502.C3508	27
CLIMBER							
FIC. PUM.	FICUS PUMILA	薜荔	800	MIN. 1000L	POTTED, MIN. 3 SHOOT PER PLANT	KOB200/LB/C3508	14
SHRUB							
BRU.HOP.	BRUNFELSIA HOPEANA	鴛鴦茉莉	400	500 X 400	POTTED	KOB200/LB/C3508	200
DRA.MAR.	DRACAENA MARGINATA	紅邊竹蕉	400	1000 X 400	POTTED	KOB200/LD/W3530	121
COR.TER.	CORDYLINA TERMINALIS	紅鐵樹	350	1200 X 300	POTTED	KOB200/LB/C3508.LC/W3529.LD/W3530	319
CRI.ASI.	CRINUM ASIATICUM	文殊蘭	300	500 X 300	POTTED	KOB200/LB/C3508.LC/W3529.LD/W3530.W3531.W3532	3324
DUR.REP.	DURANTA REPENS	連翹	400	600 X 500	POTTED	KOB200/LD/W3531.W3532	880
DUR.REP.'GOLDEN LEAVES'	DURANTA REPENS 'GOLDEN LEAVES'	假連翹 (黃花葉)	400	500 X 400	POTTED	KOB200/LC/W3529.LD/W3530	437
DUR.REP.'VAR'	DURANTA REPENS 'VARIEGATA'	花葉連翹	400	600 X 500	POTTED	KOB200/LB/C3508	184
IXO. CHI.	IXORA CHINENSIS	龍船花	300	600 X 400	POTTED	KOB200/LB/C3508.LC/W3529.LD/W3530.W3531.W3532	1675
LIG.SIN.	LIGUSTRUM SINENSE	山指甲	300	400 X 300	POTTED	KOB200/LC/W3528.W3529	775
PHI.SEL.	PHILODENDRON SELLOUM	春羽	650	1200 X 600	POTTED	KOB200/LB/C3508	8
PHY.MYR.	PHYLLANTHUS MYRTIFOLIUS	錫蘭葉下珠	300	400 X 250	POTTED	KOB200/LB/C3508	57
FIC.MIC.'GOLD'	FICUS MICROCARPA GOLDEN LEAVES	黃金榕	300	400 X 300	POTTED	KOB200/LC/W3528.W3529	597
RHA.EXC.	RHAPIS EXCELSA	棕竹	600	1000 X 550	POTTED	KOB200/LB/C3508.LD/W3530	61
RHO.DIS.	RHOEO DISCOLOR	蚌花	150	400 X 300	POTTED	KOB200/LC/W3529	706
RHO.SIM.	RHODODENDRON SIMSII	紅杜鵑	400	500 X 350	POTTED	KOB200/LD/W3530	163
SCH.ARB.	SCHEFFLERA ARBORICOLA	細葉鴨腳木/ 八葉木	500	450 X 300	POTTED	KOB200/LB/C3508.LC/W3529.LD/W3530.W3531.W3532	1090
SPA.FLO.	SPATHIPHYLLUM FLORIBUNDUM	白鶴芋	300	500 X 300	POTTED	KOB200/LB/C3508	814
ZEP.GRA.	ZEPHYRANTHES GRANDIFLORA	風雨花	150	150 X 150	POTTED	KOB200/LD/W3530	4856
GROUND COVER							
OPH.JAP.	OPHIOPOGON JAPONICUS	沿階草	150	200 X 200	POTTED	KOB200/LB/C3508.LD/W3531.W3532	7433
SET.PUR.	SETCREASEA PURPUREA	紫水竹草	150	250 X 300	POTTED	KOB200/LB/C3508.LC/W3529.LD/W3530.W3531	9651
TURF GRASS							AREA (SQ. M)
HYDROSEEDING						KOB200/LB/W3504	0
TURF GRASS						KOB200/LC/W3528.W3529.LD/W3530	485

User: Workspace C:\Program Files\Bentley\WorkspaceUsers\Kucf, UserRef: C:\Program Files\Bentley\Workspace\Projects\KOB200.pcf
 PLOT: DRV:H:\42298_Link_200_JVA\Design and Engineering\CADD Drawings\Link200\cadd\CAD_ADMIN\PLOT\Driver_Backup\A3_BW_LASER.plt
 PRINTED BY: skyuuen 12/8/2009 16:05:25
 FILENAME: H:\42298_Link_200_JVA\BWF\Sketch\BiliChan\In-033461\Submission Package 065-14) - Modified by BiliChan\065\KOB200-LE-M390.dgn

REV	DATE	BY	SUB	APP	DESCRIPTION
1	16JUN09	VC	1H	PW	AS-BUILT DRAWING
2	25MAY09	VC	1H	PW	GENERAL REVISION AND RESPONSE TO LCSD'S COMMENT
3	30JAN09	TL	1H	PW	GENERAL REVISION AND RESPONSE TO HYD'S & LCSD'S COMMENT
4	09JAN09	TL	1H	PW	ISSUE FOR CONSTRUCTION - ICE CERTIFICATION (KOB200/065/C0141/C)

DESIGNED BY	DT
DRAWN BY	AC
CHECKED BY	IH
IN CHARGE	PW
DATE	01MAR2006

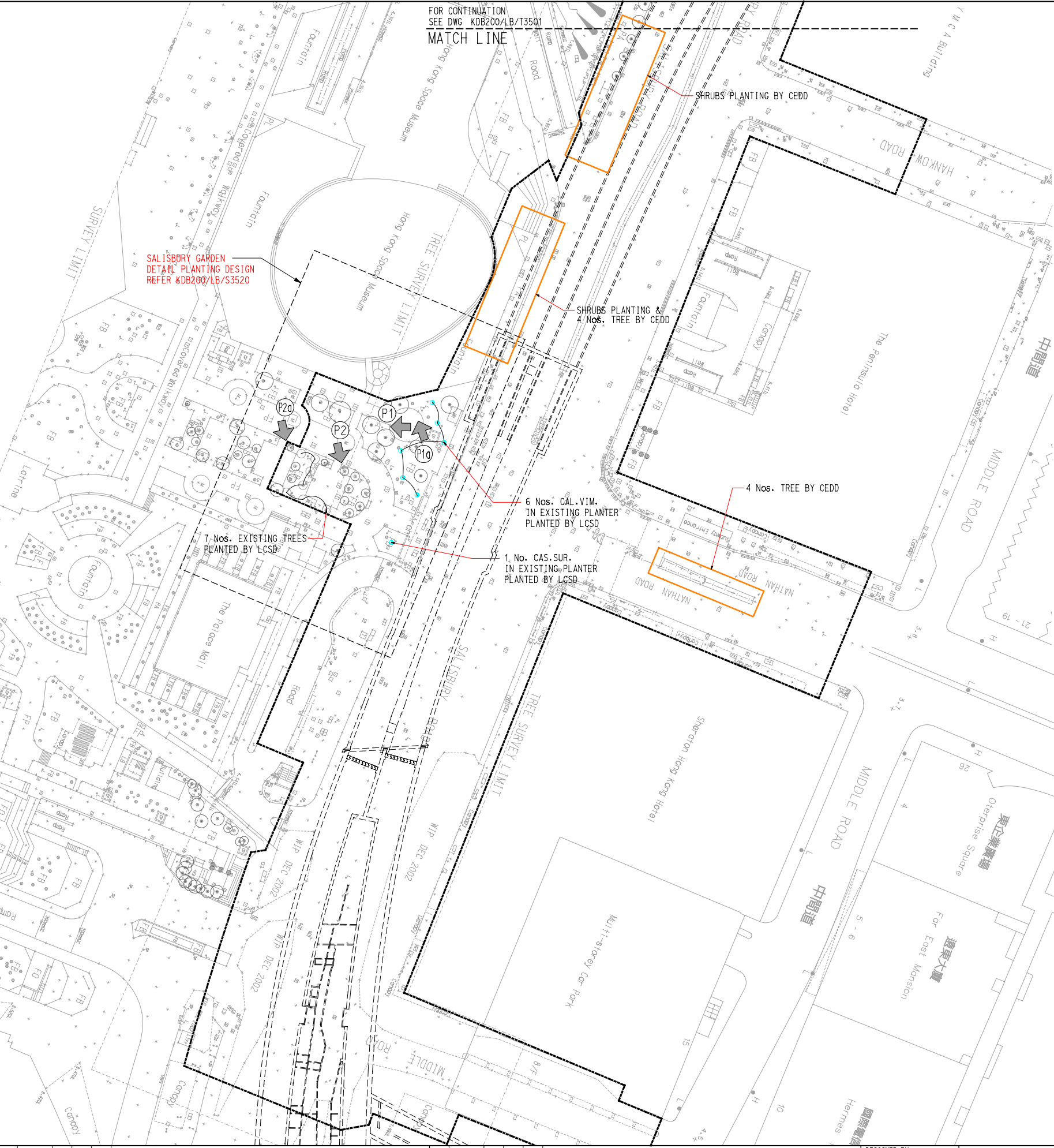
PROJECT MANAGER:	MTR 九龍南綫 Kowloon Southern Link
OWNER:	Link 200 Joint Venture
	Mott Connell in association with Aedas

TITLE	CONTRACT KOB200
	PLANTING SCHEDULE

SCALE	NIL
ORIGINATOR	LBBKJH-MCL
ORIGINATOR REFERENCE	
DRAWING NUMBER	KOB200 / LE / W3901 1
REV	1
RAILWAY LOCATION	000
STAGE	2
SHEET NO	

User: C:\Program Files\Bentley\Workspace\Users\KGC\uf, UserRef: C:\Program Files\Bentley\Workspace\Projects\Link200\N.dwg
 PLOT: D:\HW\2298 Link 200 JV\Design and Engineering\CAD Drawings\Link200\0665\CAD_ADMIN\Printer\HP-55500-COLOR LASER.PLT
 PRINTED BY: Roger-C 13-Jul-09 9:43:27 AM
 FILENAME: H:\Personal\Bill Chan\From Roger\2009-06-30 Urbis\To Urbis\Revised\IGN KDB200-LB-S3500.dgn
 Mags reproduced with permission of The Director of Lands, (C) Hong Kong Government.

FOR CONTINUATION
 SEE DWG. KDB200/LB/S3501
 MATCH LINE



Planting Schedule ABB.	SCIENTIFIC NAME	SPACING	SIZE (MM) HT X SP	REMARKS	QTY
TREES					
CAL. VIM.	CALLISTEMON VIMINALIS	AS SHOWN	SEMI-MATURE	BALL & BURLAP	6
GRE. ROB.	GREVILLEA ROBUSTA	AS SHOWN	SEMI-MATURE	BALL & BURLAP	0
CAS. SUR.	CASSIA SURATTENSIS	AS SHOWN	SEMI-MATURE	BALL & BURLAP	1
TOTAL					7



PHOTO-P1



PHOTO-P2

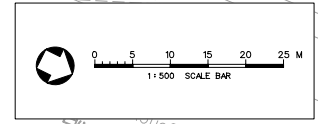


PHOTO-P1a



PHOTO-P2a

SITE PHOTOS OF PROPOSED PLANTING AREAS AT SALISBURY GARDEN EXISTING PLANTER

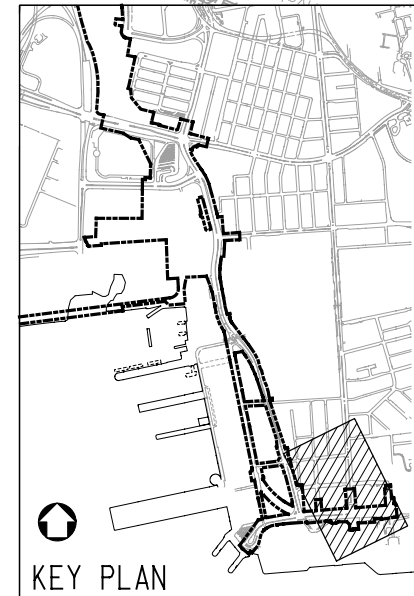


NOTE

- SHRUBS AND GROUND COVER PLANTING REFER TO DWG. KDB200/LB/S3520

LEGEND

- GAZETTAL BOUNDARY
- HOARDING BOUNDARY
- TREES PROPOSED BY KDB200 CONTRACTOR
- EXISTING TREES TO BE RETAINED SHALL NOT BE AFFECTED BY KDB200
- SHRUBS PROPOSED BY KDB200 CONTRACTOR



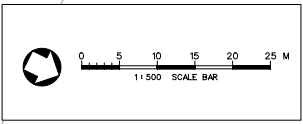
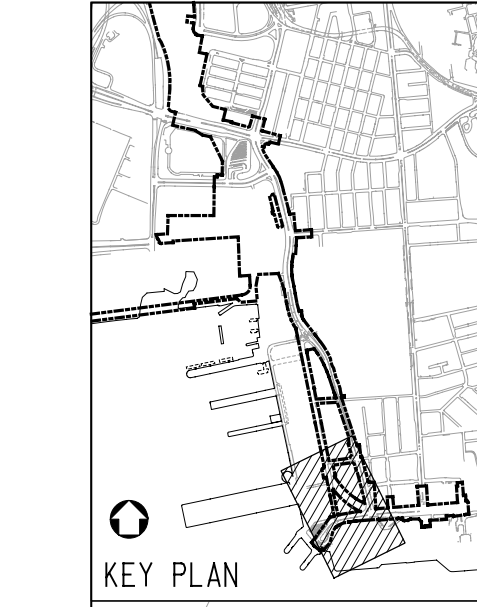
REV	DATE	BY	SUB	APP	DESCRIPTION
1	16JUN09	VC	IH	PW	AS-BUILT DRAWING
2	30JAN09	TL	IH	PW	GENERAL REVISION AND RESPONSE TO HYD'S & LCSD'S COMMENT
3	09JAN09	TL	IH	PW	ISSUE FOR CONSTRUCTION - ICE CERTIFICATION (KDB200/065/CO141/C)
4	09OCT08	TL	IH	PW	GENERAL REVISION AND RESPONSE TO HYD'S COMMENT
5	30SEP08	TL	IH	PW	ISSUE FOR CONSTRUCTION - ICE CERTIFICATE (KDB200/065/CO141/B)

DESIGNED BY DT
 DRAWN BY AC
 CHECKED BY IH
 IN CHARGE PW
 DATE 27SEP2005

PROJECT MANAGER: **MTR** 九龍南綫
 OWNER: **KCS** Kowloon Southern Link
 Link 200 Joint Venture: **Balfour Beatty**, **Mott Cornell**, **in association with** **MEINHARDT**, **Aedas**

TITLE: CONTRACT KDB200
 PROPOSED TREE PLANTING PLAN
 SHEET 1 OF 5

SCALE: 1:500 @ A1 & 1:1000 @ A3	ORIGINATOR: LBBK/JH-MCL	ORIGINATOR REFERENCE:
DRAWING NUMBER: KDB200 /LB/S3500	REV: 2	
RAILWAY LOCATION: K.S.L. 000	STAGE: Z	SHEET NO:



- LEGEND**
- GAZETAL BOUNDARY
 - HOARDING BOUNDARY
 - TREES PROPOSED BY KDB200 CONTRACTOR
 - EXISTING TREES TO BE RETAINED SHALL NOT BE AFFECTED BY KDB200
 - SHRUBS PROPOSED BY KDB200 CONTRACTOR

Planting Schedule ABB.	SCIENTIFIC NAME	SPACING	SIZE (MM) HT X SP	REMARKS	QTY
TREES					



PHOTO-P3 PHOTO-P4
SITE PHOTOS OF PROPOSED PLANTING AREAS ALONG SOUTH SIDE OF SALISBURY ROAD PAVEMENT AREA

UserWorkspace C:\Program Files\Bentley\WorkSpaceUsers\KGC\cf\UserRef_C\Program Files\Bentley\WorkSpace\Projects\Link200\N\pct
 PLOT_DRV\HV\2238 Link 200 JV\Design and Engineering\CAD Drawings\Link200\cadd\CAD_ADMIN\Photoviewer\HP_55500_COLOR LASER.PLT
 PRINTED BY: Roger-C 07-Jul-09 10:47:01 AM
 FILENAME: H:\Personal\Bill Chan\From Roger\2009-06-30\Urban\To Urban\Revised\GN KDB200-LB-T3501.dgn
 Mags reproduced with permission of The Director of Lands, (C) Hong Kong Government.



MATCH LINE
FOR CONTINUATION
SEE DWG KDB200/LB/S3500

REFER KDB200/LB/P3509

2 Nos. TREE AND SHRUB PLANTING BY CEDD

MATCH LINE
FOR CONTINUATION
SEE DWG KDB200/LB/T3502

REV	DATE	BY	SUB	APP	DESCRIPTION
1	16JUN09	VC	IH	PW	AS-BUILT DRAWING
2	30SEP08	TL	IH	PW	ISSUE FOR CONSTRUCTION - ICE CERTIFICATE (KDB200/065/C0141/B)

DESIGNED BY	DT
DRAWN BY	AC
CHECKED BY	IH
IN CHARGE	PW
DATE	27SEP2005

PROJECT MANAGER: **MTR** 九龍南綫
Kowloon Southern Link

OWNER: **Link 200 Joint Venture** **Mott Connell** in association with **Aedas**

TITLE: **CONTRACT KDB200**

SCALE: 1 : 500 @ A1

ORIGINATOR: LBBKJH-MCL ORIGINATOR REFERENCE

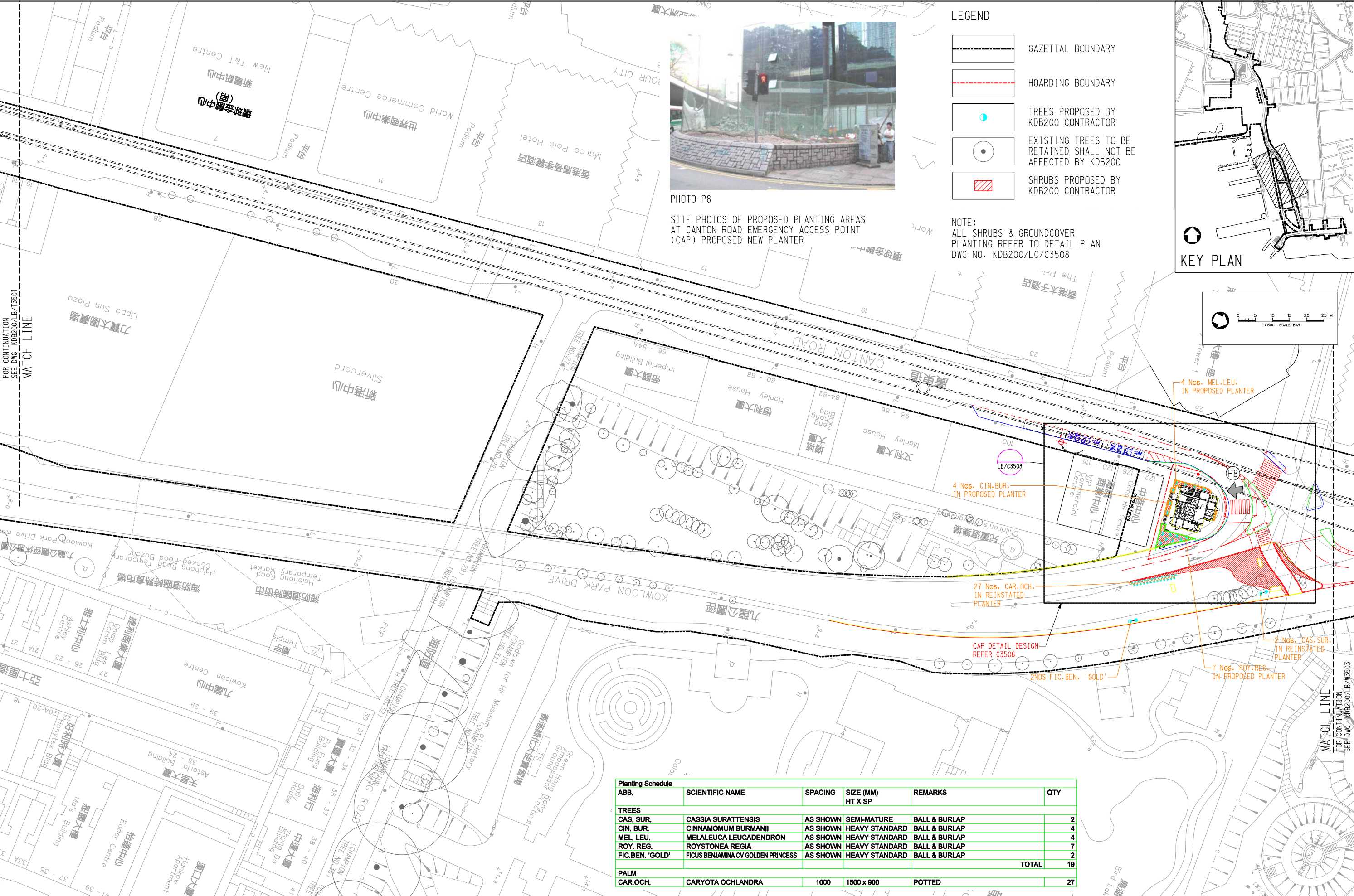
DRAWING NUMBER: **KDB200 /LB/T3501** REV: **1**

RAILWAY LOCATION STAGE SHEET NO
K.SL 000 Z

PROPOSED TREE PLANTING PLAN
SHEET 2 OF 5

FULL SIZE A1

UserWorkspace C:\Program Files\Bentley\Workspace\Users\KGC\uf\ UserRef_C\AProgram Files\Bentley\Workspace\Projects\Link200\N\pct
 PLOT: DRV:HV:W2298 Link 200 JV:Design and Engineering\CAD Drawings\Link200\065\CAD_ADMIN\Photriver\HP_55500_COLOR LASER.PLT
 PRINTED BY: RogerC 07-Jul-09 11:03:08 AM
 FILENAME: H:\Personal\Bill Chan\From Roger_V2009-06-30 Urbis\To Urbis\Revised\DGN\KDB200-LB-T3505.dgn
 Mops reproduced with permission of The Director of Lands, (C) Hong Kong Government.



Planting Schedule					
ABB.	SCIENTIFIC NAME	SPACING	SIZE (MM) HT X SP	REMARKS	QTY
TREES					
CAS. SUR.	CASSIA SURATTENSIS	AS SHOWN	SEMI-MATURE	BALL & BURLAP	2
CIN. BUR.	CINNAMOMUM BURMANII	AS SHOWN	HEAVY STANDARD	BALL & BURLAP	4
MEL. LEU.	MELALEUCA LEUCADENDRON	AS SHOWN	HEAVY STANDARD	BALL & BURLAP	4
ROY. REG.	ROYSTONEA REGIA	AS SHOWN	HEAVY STANDARD	BALL & BURLAP	7
FIC. BEN. 'GOLD'	FICUS BENJAMINA CV GOLDEN PRINCESS	AS SHOWN	HEAVY STANDARD	BALL & BURLAP	2
TOTAL					19
PALM					
CAR.OCH.	CARYOTA OCHLANDRA	1000	1500 x 900	POTTED	27

REV	DATE	BY	SUB	APP	DESCRIPTION
16	JUN 09	VC	IH	PW	AS-BUILT DRAWING
09	JAN 09	TL	IH	DW	ISSUE FOR CONSTRUCTION - ICE CERTIFICATE (KDB200/065/C0141/C)

DESIGNED BY: DT
 DRAWN BY: AC
 CHECKED BY: IH
 IN CHARGE: PW
 DATE: 27SEP2005

PROJECT MANAGER: **MTR** 九龍南綫
 OWNER: **KCS** Kowloon Southern Link

Link 200 Joint Venture
 Mott Connell in association with
 Balfour Beatty, Hochtief, MEINHARDT, Aedas

TITLE: CONTRACT KDB200

SCALE: 1:500 @ A1 & 1:1000 @ A3

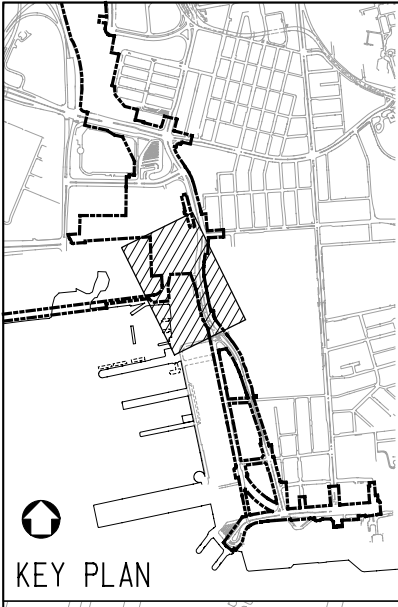
ORIGINATOR: LBBK/JH-MCL
 ORIGINATOR REFERENCE: KDB200/LB/T3502
 DRAWING NUMBER: KDB200/LB/T3502
 REV: 1

RAILWAY LOCATION STAGE SHEET NO
 K.SL 000 Z

PROPOSED TREE PLANTING PLAN
 SHEET 3 OF 5

FULL SIZE A1

UserWorkspace C:\Program Files\Bentley\WorkSpaceUsers\K.C. UserRef_C:\Program Files\Bentley\WorkSpace\Projects\Link200\N.dwg
 PLOT: DRV:HV:R2298 Link 200 JV\Design and Engineering\CAD Drawings\Link200\cadd\CAD_ADMIN\Printer\HP-5550D.COLOR LASER.PLT
 PRINTED BY: Roger C 15-Jul-09 9:15:23 AM
 FILENAME: H:\Personal\Bill Chan\From Roger\2009-06-30 Urbis\To Urbis\Revised\IGN KDB200-LB-W3503.dgn
 Mgs reproduced with permission of The Director of Lands, (C) Hong Kong Government.



LEGEND

- GAZETAL BOUNDARY
- HOARDING BOUNDARY
- TREES PROPOSED BY KDB200 CONTRACTOR
- EXISTING TREES TO BE RETAINED SHALL NOT BE AFFECTED BY KDB200
- SHRUBS PROPOSED BY KDB200 CONTRACTOR

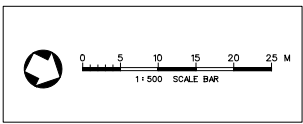
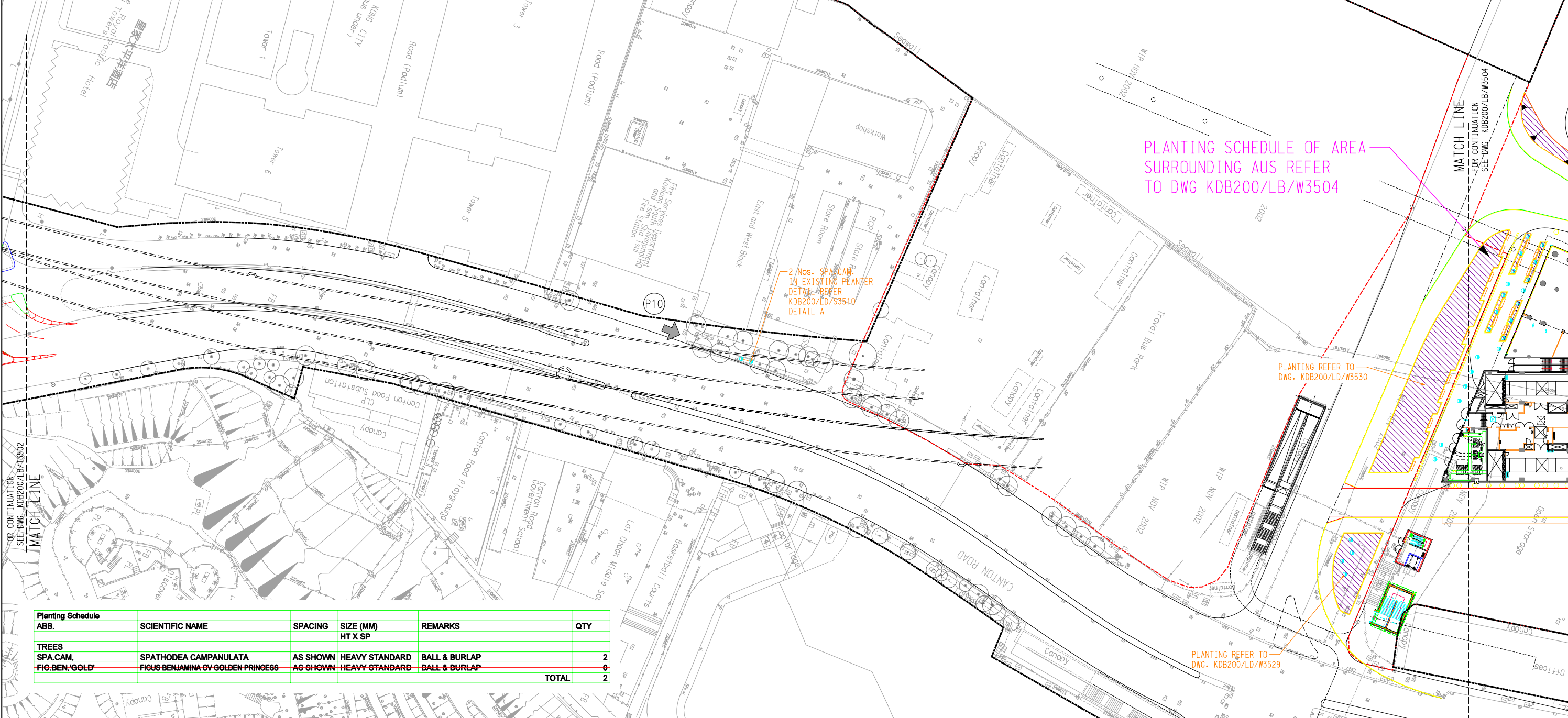


PHOTO-P10
 SITE PHOTOS OF PROPOSED PLANTING AREAS ALONG CANTON ROAD EXISTING PLANTER NEXT TO TST FIRE STATION



Planting Schedule ABB.	SCIENTIFIC NAME	SPACING	SIZE (MM) HT X SP	REMARKS	QTY
TREES					
SPA.CAM.	SPATHODEA CAMPANULATA	AS SHOWN	HEAVY STANDARD	BALL & BURLAP	2
FIG.BEN.'GOLD'	FIGUS BENJAMINA CV GOLDEN PRINCESS	AS SHOWN	HEAVY STANDARD	BALL & BURLAP	0
TOTAL					2

REV	DATE	BY	SUB	APP	DESCRIPTION
1	16JUN09	VC	IH	PW	AS-BUILT DRAWING
2	24MAR09	VC	IH	PW	GENERAL REVISION AND RESPONSE TO MTR TQ/1521 REQUEST
3	30JAN09	TL	IH	PW	GENERAL REVISION AND RESPONSE TO HYD'S & LCSD'S COMMENT
4	09JAN09	TL	IH	PW	ISSUE FOR CONSTRUCTION - ICE CERTIFICATION (KDB200/065/CO141/C)
5	09OCT08	TL	IH	PW	GENERAL REVISION AND RESPONSE TO HYD'S COMMENT
6	30SEP08	TL	IH	PW	ISSUE FOR CONSTRUCTION - ICE CERTIFICATE (KDB200/065/CO141/B)

DESIGNED BY: DT
 DRAWN BY: AC
 CHECKED BY: IH
 IN CHARGE: PW
 DATE: 27SEP2005

PROJECT MANAGER: **MTR** 九龍南綫
 Kowloon Southern Link

OWNER: **Link 200 Joint Venture** **Mott Connell** in association with **Aedas**

TITLE: **CONTRACT KDB200**

SCALE: 1:500 @ A1 & 1:1000 @ A3

ORIGINATOR: LBBKJH-MCL
 ORIGINATOR REFERENCE: KDB200/LB/W3503

DRAWING NUMBER: **KDB200/LB/W3503** REV: **3**


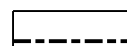
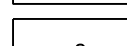
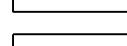
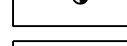

RAILWAY LOCATION STAGE SHEET NO: K.SL 000 Z



PROPOSED TREE PLANTING PLAN
 SHEET 4 OF 5

FULL SIZE A1

PLANTING SCHEDULE	SCIENTIFIC NAME	SPACING	SIZE (MM)	REMARKS	QTY
ABB. TREES					
SPA. CAM.	SPATHODEA CAMPANULATA	AS SHOWN	HEAVY STANDARD	BALL & BURLAP	21
FIC. BEN. 'VAR'	FIGUS BENJAMINA 'VARIEGATA'	AS SHOWN	HEAVY STANDARD	BALL & BURLAP	0
FIC. MIC. 'YELLOW STRIP'	FIGUS MICROCARPA 'YELLOW STRIP'	AS SHOWN	HEAVY STANDARD	BALL & BURLAP	8
BOM. MAL.	BOMBAX MALABARICUM	AS SHOWN	HEAVY STANDARD	BALL & BURLAP	4
CAS. FIS.	CASSIA FISTULA	AS SHOWN	HEAVY STANDARD	BALL & BURLAP	2
CAS. SIA.	CASSIA SIAMEA	AS SHOWN	HEAVY STANDARD	BALL & BURLAP	1
CIN. BUR.	CINNAMOMUM BURMANII	AS SHOWN	HEAVY STANDARD	BALL & BURLAP	111
ROY. REG.	ROYSTONIA REGIA	AS SHOWN	HEAVY STANDARD	BALL & BURLAP	9
	TOTAL:				156

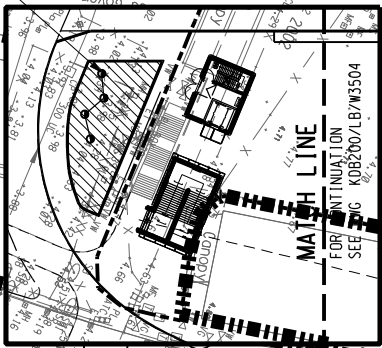
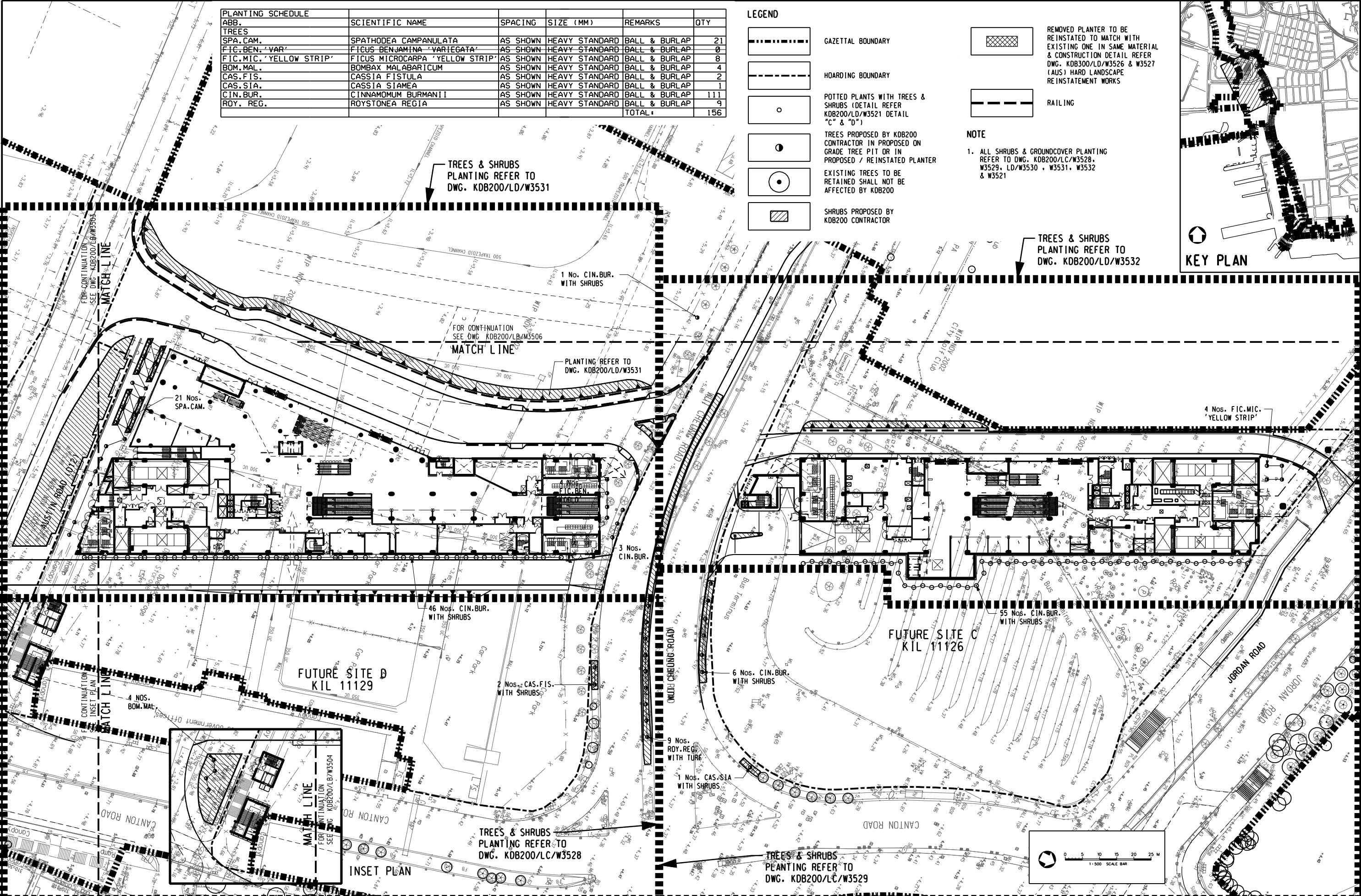
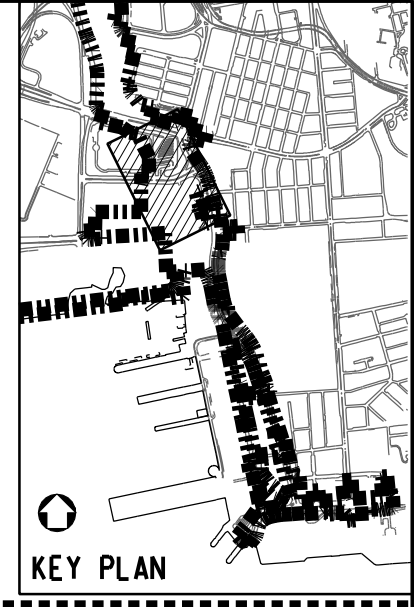
LEGEND

-  GAZETTED BOUNDARY
-  HOARDING BOUNDARY
-  POTTED PLANTS WITH TREES & SHRUBS (DETAIL REFER KOB200/LD/W3521 DETAIL "C" & "D")
-  TREES PROPOSED BY KOB200 CONTRACTOR IN PROPOSED ON GRADE TREE PIT OR IN PROPOSED / REINSTATED PLANTER
-  EXISTING TREES TO BE RETAINED SHALL NOT BE AFFECTED BY KOB200
-  SHRUBS PROPOSED BY KOB200 CONTRACTOR

-  REMOVED PLANTER TO BE REINSTATED TO MATCH WITH EXISTING ONE IN SAME MATERIAL & CONSTRUCTION DETAIL REFER DWG. KOB300/LD/W3526 & W3527 (AUS) HARD LANDSCAPE REINSTATEMENT WORKS
-  RAILING

NOTE

1. ALL SHRUBS & GROUND COVER PLANTING REFER TO DWG. KOB200/LC/W3528, W3529, LD/W3530, W3531, W3532 & W3521



User: Workspace C:\Program Files\Bentley\Workspace\Users\Kuc\c\ UserRef C:\Program Files\Bentley\Workspace\Projects\KOB200.pcf
 PLOT DRW: H:\H2298 Link 200 JV\Design and Engineering\CADD Drawings\Link200\cadd\CAD_ADMIN\Pldrwr\Backup\A3_BW_LASER.plt
 12/8/2009
 PRINTED BY: skyeuen
 FILENAME: H:\H2298 Link 200 JV\BWF\Sketchn\Bil\Chan\033461(Submission Package 065-14) - Modified by Bil Chan\KOB200-LB-W3504.dgn
 16:25:16

REV	DATE	BY	SUB	APP	DESCRIPTION
16JUN09	VC	IH	PW		AS-BUILT DRAWING
25MAY09	VC	IH	PW		GENERAL REVISION AND RESPONSE TO LCSD'S COMMENT
30JAN09	TL	IH	PW		GENERAL REVISION AND RESPONSE TO HYD'S & LCSD'S COMMENT
09JAN09	TL	IH	PW		ISSUE FOR CONSTRUCTION - ICE CERTIFICATION (KOB200/065/C0141/C)

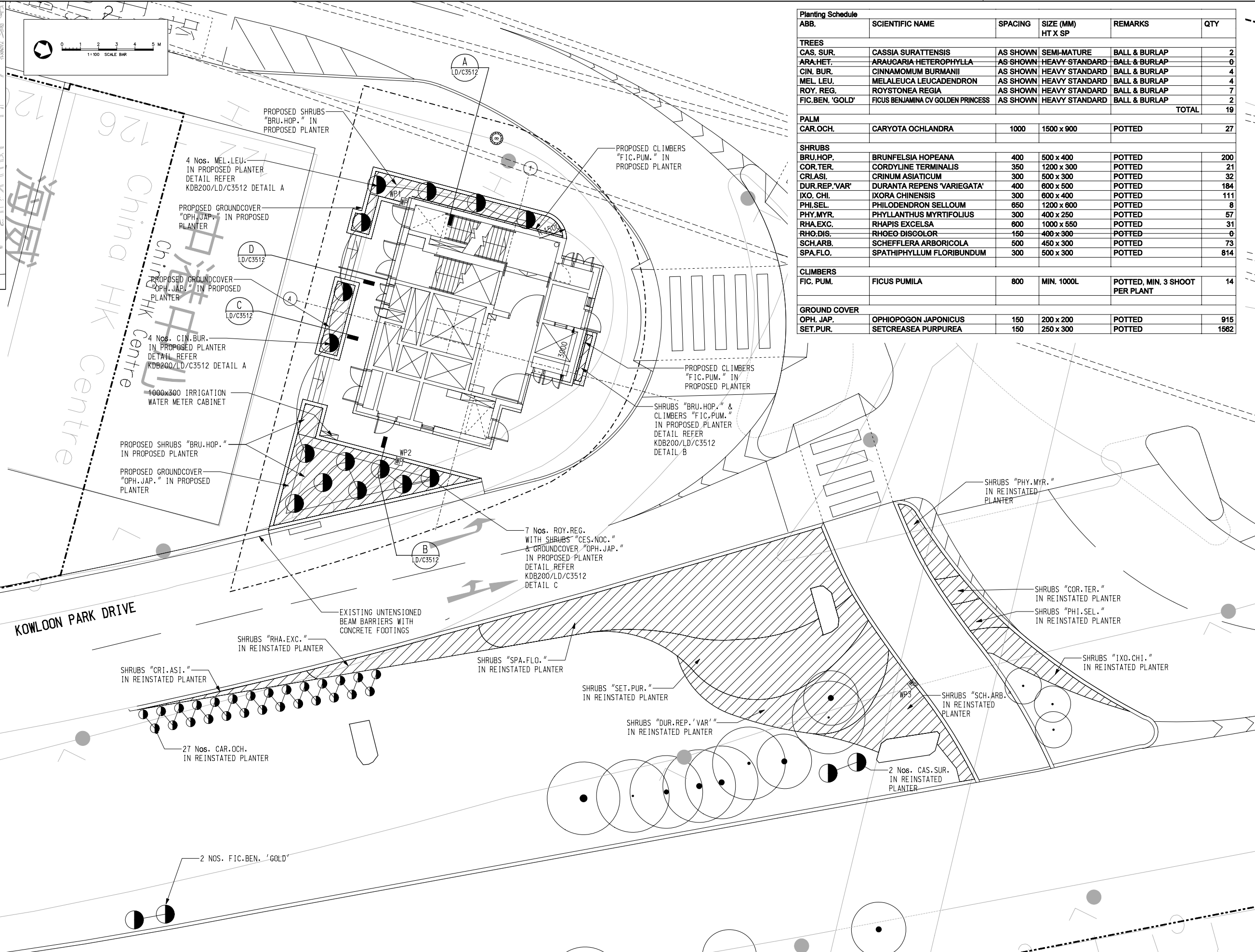
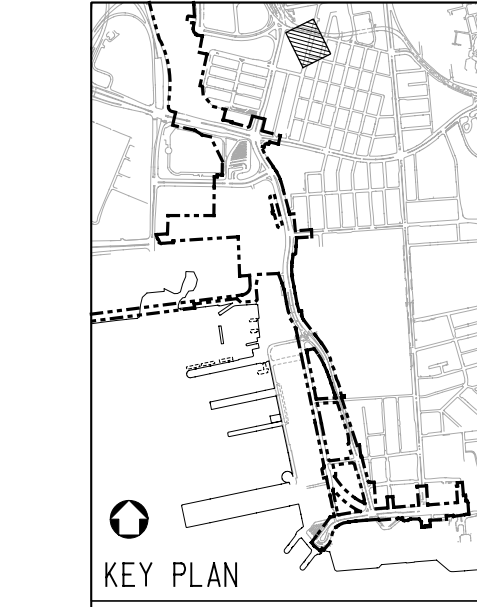
DESIGNED BY: DT
 DRAWN BY: AC
 CHECKED BY: IH
 IN CHARGE: PW
 DATE: 27SEP2005

PROJECT MANAGER: **MTR** 九龍南綫
 Kowloon Southern Link
 OWNER: **KCS**

Link 200 Joint Venture
 Balfour Beatty, Mott MacDonald, Mott
 Mott Connell in association with
 WEINHARDT Aedas

CONTRACT KOB200
 SCALE: 1 : 500 @ A1 & 1:1000 @ A3
 ORIGINATOR: LBBKJH-MCL
 ORIGINATOR REFERENCE:
 DRAWING NUMBER: **KOB200 /LB/W3504** REV 1
 RAILWAY LOCATION STAGE SHEET NO:
 KSL WKN **2**

PROPOSED TREE PLANTING PLAN
 SHEET 5 OF 5



Planting Schedule					
ABB.	SCIENTIFIC NAME	SPACING	SIZE (MM) HT X SP	REMARKS	QTY
TREES					
CAS. SUR.	CASSIA SURATTENSIS	AS SHOWN	SEMI-MATURE	BALL & BURLAP	2
ARA.HET.	ARAUCARIA HETEROPHYLLA	AS SHOWN	HEAVY STANDARD	BALL & BURLAP	0
CIN. BUR.	CINNAMOMUM BURMANII	AS SHOWN	HEAVY STANDARD	BALL & BURLAP	4
MEL. LEU.	MELALEUCA LEUCADENDRON	AS SHOWN	HEAVY STANDARD	BALL & BURLAP	4
ROY. REG.	ROYSTONEA REGIA	AS SHOWN	HEAVY STANDARD	BALL & BURLAP	7
FIG.BEN. 'GOLD'	FIGUS BENJAMINA CV GOLDEN PRINCESS	AS SHOWN	HEAVY STANDARD	BALL & BURLAP	2
TOTAL					19
PALM					
CAR.OCH.	CARYOTA OCHLANDRA	1000	1500 x 900	POTTED	27
SHRUBS					
BRU.HOP.	BRUNFELSIA HOPEANA	400	500 x 400	POTTED	200
COR.TER.	CORDYLINE TERMINALIS	350	1200 x 300	POTTED	21
CRI.ASI.	CRINUM ASIATICUM	300	500 x 300	POTTED	32
DUR.REP.'VAR'	DURANTA REPENS 'VARIEGATA'	400	600 x 500	POTTED	184
IXO.CHI.	IXORA CHINENSIS	300	600 x 400	POTTED	111
PHI.SEL.	PHILODENDRON SELLOUM	650	1200 x 600	POTTED	8
PHY.MYR.	PHYLLANTHUS MYRTIFOLIUS	300	400 x 250	POTTED	57
RHA.EXC.	RHAPIS EXCELSA	600	1000 x 550	POTTED	31
RHO.DIS.	RHOE DISCOLOR	150	400 x 300	POTTED	0
SCH.ARB.	SCHEFFLERA ARBORICOLA	500	450 x 300	POTTED	73
SPA.FLO.	SPATHIPHYLLUM FLORIBUNDUM	300	500 x 300	POTTED	814
CLIMBERS					
FIG. PUM.	FIGUS PUMILA	800	MIN. 1000L	POTTED, MIN. 3 SHOOT PER PLANT	14
GROUND COVER					
OPH. JAP.	OPHIOPOGON JAPONICUS	150	200 x 200	POTTED	915
SET.PUR.	SETCREASEA PURPUREA	150	250 x 300	POTTED	1562

- LEGEND**
- GAZETAL BOUNDARY
 - HOARDING BOUNDARY
 - TREES PROPOSED BY KDB200 CONTRACTOR
 - EXISTING TREES TO BE RETAINED SHALL NOT BE AFFECTED BY KDB200
 - SHRUBS PROPOSED BY KDB200 CONTRACTOR
 - IRRIGATION WATER POINT
DETAIL REFER DWG. KDB200/LD/C3522

- NOTE :**
- BASE OF THIS DRAWING TAKEN FROM : ARCHITECT'S DRAWING TITLE G/F PLAN (DWG. NO. KDB200/AB/C1013 REV. C)
 - DRAINAGE INFORMATION REFER E&M DWGS. IN PACKAGE 290
 - IRRIGATION WATER POINTS CONNECT TO WATER SUPPLY SYSTEM REFER E&M PLUMBING DWGS. IN PACKAGE 290
 - ALL EXISTING TREES & SHRUBS TO BE RETAINED SHALL NOT BE AFFECTED BY KDB200 & NEWLY PROPOSED PLANTING WORKS.
 - IRRIGATION WATER POINT DETAIL REFER DWG. KDB200/LD/C3522
 - CAP'S HARD LANDSCAPE LAYOUT REFER DWG. KDB200/LC/C3524

UserWorkspace C:\Program Files\Bentley\Workspace\Users\KJG\ucf\UserRef_C3\Program Files\Bentley\Workspace\Projects\Link200\N\pct
 PLOT.DRV:HK\2238 Link 200 JV\Design and Engineering\CAD Drawings\Link200\cadd\CAD_ADMIN\Photo\river\4506-Eng-Emi LASER.PLT
 PRINTED BY: Roger C 07-Jul-09 10:48:46 AM
 FILENAME: H:\Personal\Bill Chan\From Roger\2009-06-30 Urbis\To Urbis\Revised\IGN KDB200-LB-C3508.dgn
 Mgs reproduced with permission of The Director of Lands, (C) Hong Kong Government.

REV	DATE	BY	SUB	APP	DESCRIPTION
1	16JUN09	VC	TH	PW	AS-BUILT DRAWING
2	09JAN09	TL	IH	DW	ISSUE FOR CONSTRUCTION - ICE CERTIFICATE (KDB200/065/C0141/C)

DESIGNED BY: DT
 DRAWN BY: AC
 CHECKED BY: IH
 IN CHARGE: P.W.
 DATE: 27SEP2005

PROJECT MANAGER: **MTR** 九龍南綫
 OWNER: **KCR** Kowloon Southern Link

Link 200 Joint Venture
 Mott Connell in association with
 Balfour Beatty, Hochtief, and Aedas

TITLE: CONTRACT KDB200
 SCALE: 1:100 @ A1 & 1:200 @ A3
 CANTON ROAD EMERGENCY ACCESS POINT (CAP) COMPENSATORY PLANTING DETAIL PLAN

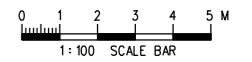
ORIGINATOR: LBBKJH-MCL	ORIGINATOR REFERENCE:
DRAWING NUMBER: KDB200 /LB/C3508	REV: 1
RAILWAY LOCATION: K.S.L. 000	STAGE: Z
SHEET NO: 1	

FULL SIZE A1

Maps reproduced with permission of The Director of Lands. (C) Hong Kong Government.

PROPOSED PLANTING SEHEDULE WITHIN KSL GAZETAL BOUNDARY

ABB	Botanical Name	Chinese Name	Spacing (mm)	Size (mm)	Remark	Drawing No.	QTY
TREE							
BAU.VAR.	BAUHINIA VARIEGATA	宮粉羊蹄甲	As Shown	Heavy Standard	Ball & Burlap	KDB300/CA/C 1656	44
EUC.CIT.	EUCALYPTUS CITRIODORA	檸檬桉	As Shown	Heavy Standard	Ball & Burlap	KDB300/CA/C 1656	20
LAG.SPE.	LAGERSTROEMIA SPECIOSA	洋紫葳	As Shown	Heavy Standard	Ball & Burlap	KDB300/CA/C 1656	18
SPA.CAM.	SPATHODEA CAMPANULATA	火焰木	As Shown	Heavy Standard	Ball & Burlap	KDB300/CA/C 1656	53
Total							135
SHRUB							
RHD.SIM.	RHODODENDRON SIMSII (random colour)	紅杜鵑	250	300 (H) x 300 (W)		KDB300/CA/C 1654	Appro x 7,500
Total							Appro x 7,500



\$USRF\$
FILENAME: \$FILE\$
PLOT_DRY:\$PLTDRL\$
PRINTED BY: \$USER\$
MODELNAME: \$MODEL\$

\$DATE\$ \$TIME\$

REV	DATE	BY	SUB	APP	DESCRIPTION
△	10JUN09	ACTH			AS-CONSTRUCTED DRAWINGS
△	01AUG06	ACTH			REVISION TO ADDRESS COMMENTS
△	12APR06	ACTH	FHC	WCKH	LANDSCAPE DRAWINGS

DESIGNED BY
ACTH
DRAWN BY
WCC
CHECKED BY
FHC
IN CHARGE
WCKH
DATE
12APR2006

PROJECT MANAGER: **九龍南線**
Kowloon Southern Link

OWNER:

中國建築工程(香港)有限公司
CHINA STATE CONSTRUCTION ENGRG. (HONG KONG) LTD.

MAUNSELL AECOM
Maunsell Consultants Asia Ltd.
茂盛(亞洲)工程顧問有限公司

TITLE
KDB300 TUNNELS - JORDAN ROAD TO YAU MA TEI VENTILATION BUILDING

PLANTING SCHEDULE

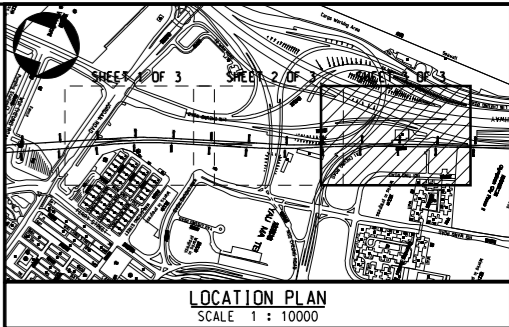
SCALE 1 : 100 @ A1			
ORIGINATOR MCAL	ORIGINATOR REFERENCE KDB300-CA-C1657.dgn		
DRAWING NUMBER KDB300/CA/C1657		REV 0	
RAILWAY KSL	LOCATION 000	STAGE Z	SHEET NO - - -

PROPOSED PLANTING SCHEDULE WITHIN KSL GAZETAL BOUNDARY

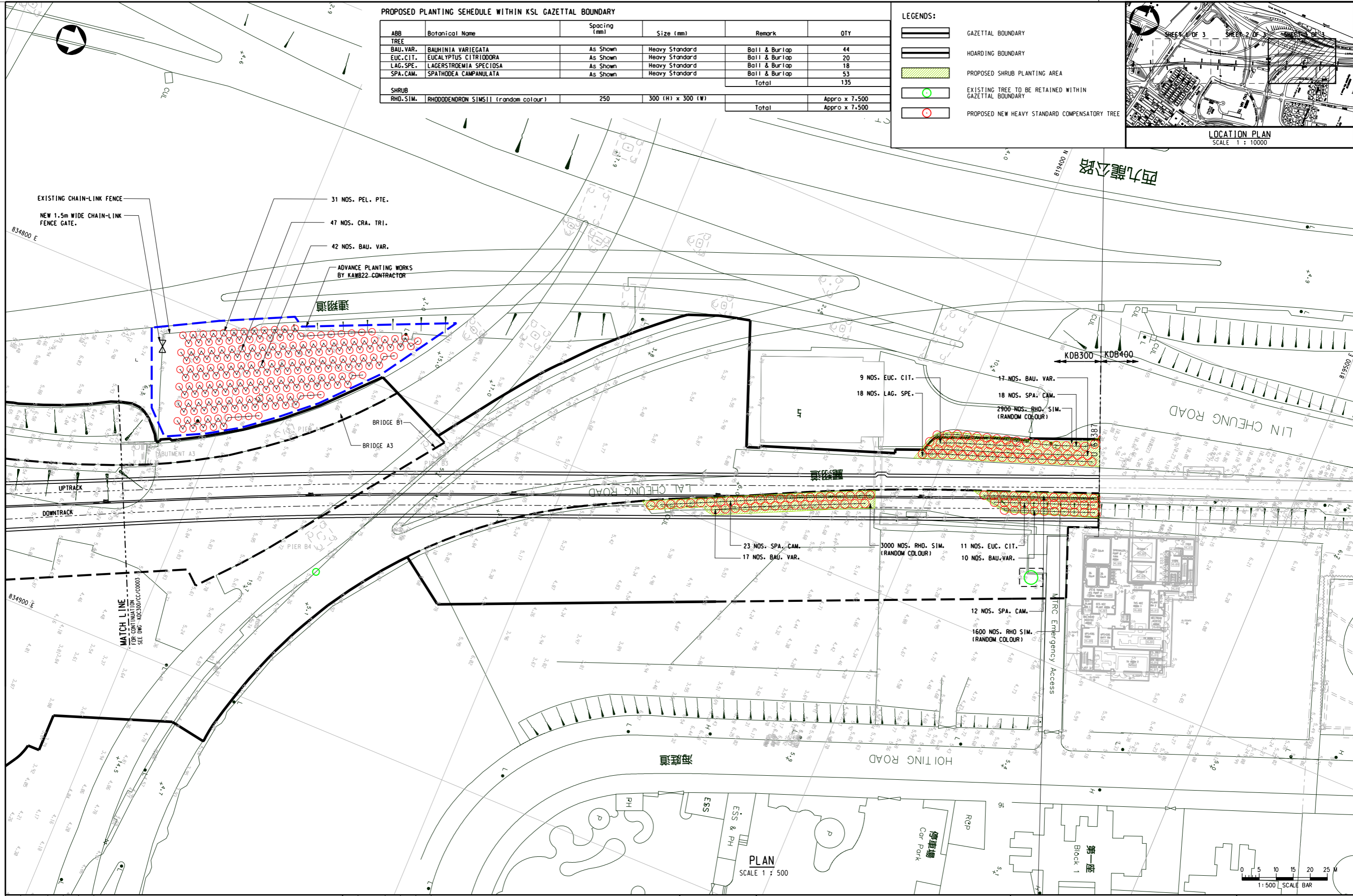
ABB	Botanical Name	Spacing (mm)	Size (mm)	Remark	QTY
TREE					
BAU.VAR.	BAUHINIA VARIEGATA	As Shown	Heavy Standard	Ball & Burlap	44
EUC.CIT.	EUCALYPTUS CITRIODORA	As Shown	Heavy Standard	Ball & Burlap	20
LAG.SPE.	LAGERSTROEMIA SPECIOSA	As Shown	Heavy Standard	Ball & Burlap	18
SPA.CAM.	SPATHODEA CAMPANULATA	As Shown	Heavy Standard	Ball & Burlap	53
Total					135
SHRUB					
RHO.SIM.	RHODODENDRON SIMSII (random colour)	250	300 (H) x 300 (W)		Appro x 7,500
Total					Appro x 7,500

LEGENDS:

- GAZETAL BOUNDARY
- HOARDING BOUNDARY
- PROPOSED SHRUB PLANTING AREA
- EXISTING TREE TO BE RETAINED WITHIN GAZETAL BOUNDARY
- PROPOSED NEW HEAVY STANDARD COMPENSATORY TREE



Maps reproduced with permission of The Director of Lands, (C) Hong Kong Government.



REV	DATE	BY	SUB	APP	DESCRIPTION
1	10JUN09	ATCH			AS-CONSTRUCTED DRAWINGS
2	01AUG06	ATCH			REVISION TO ADDRESS COMMENTS
3	12APR06	ATCH	FHC	WCKH	LANDSCAPE DRAWINGS

DESIGNED BY	ACTH
DRAWN BY	LJX
CHECKED BY	FHC
IN CHARGE	WCKH
DATE	12APR2006

PROJECT MANAGER: **九龍南線**
Kowloon Southern Link

OWNER: **中國建築工程(香港)有限公司**
CHINA STATE CONSTRUCTION ENGRG. (HONG KONG) LTD.

MAUNSELL AECOM
Maurisell Consultants Asia Ltd.

TITLE
KDB300 TUNNELS - JORDAN ROAD TO YAU MA TEI VENTILATION BUILDING
PROPOSED TREE PLANTING PLAN
CHAINAGE U 6+100 TO U 6+387
SHEET 3 OF 3

ORIGINATOR	ORIGINATOR REFERENCE		
MCAL	KDB300-CA-C1656.dgn		
DRAWING NUMBER	REV		
KDB300/CA/C1656	0		
RAILWAY	LOCATION	STAGE	SHEET NO
KSL	000	Z	3

Maps reproduced with permission of The Director of Lands, (C) Hong Kong Government.

\$USER\$ FILENAME: \$FILES\$ PLOT: DRV: \$PLTDRVL\$ PRINTED BY: \$USER\$ \$DATE\$ \$TIME\$ MODELNAME: \$MODEL\$



COMPENSATORY PLANTING WITHIN GAZETAL BOUDARY UNDER KDB400 CONTRACT						
PLANTING SCHEDULE - TREES						
QTY	CODE	BOTANICAL NAME	CHINESE NAME	SIZE (HT MMxSPD) (MM)	SPACING (MM)	REMARK
17	CAS.SUR.	CASSIA SURATTENSIS	黃槐	HEAVY STD	AS SHOWN	Ball & Burlap
42	BAU. VAR.	BAUHINIA VARIEGATA	宮粉羊蹄甲	HEAVY STD	AS SHOWN	Ball & Burlap
45	EUC. CIT.	EUCALYPTUS CITRIODORA	檸檬桉	HEAVY STD	AS SHOWN	Ball & Burlap
69	LAG. SPE.	LAGERSTROEMIA SPECIOSA	大葉紫薇	HEAVY STD	AS SHOWN	Ball & Burlap
68	SPA. CAM.	SPATHODEA CAMPANULATA	火焰木	HEAVY STD	AS SHOWN	Ball & Burlap
22	MEL. QUI.	MELALEUCA QUINQUINERVA	白千層	HEAVY STD	AS SHOWN	Ball & Burlap
263	TOTAL					
PLANTING SCHEDULE - SHRUBS						
QTY	CODE	BOTANICAL NAME	CHINESE NAME	SIZE (HT MMxSPD) (MM)	SPACING (MM)	REMARK
300	SCH. ARB.	SCHEFFLERA ARBORICOLA	鵝掌藤	600(H) X 600(W)	450	
3750	IXO. COC.	IXORA COCCINEA	龍船花	300(H) X 300(W)	300	
21796	RHO. SIM.	RHODODENDRON SIMSII (random colour)	紅杜鵑	300(H) X 300(W)	250	
25846	TOTAL					

REINSTATEMENT OF OLYMPIAN CITY II YELLOW AREA LANDSCAPE (REFER TO P.S. CLAUSE P10.12(8))						
PLANTING SCHEDULE - TREES						
QTY	CODE	BOTANICAL NAME	CHINESE NAME	SIZE (HT MMxSPD) (MM)	SPACING (MM)	REMARK
113	CIN.BUR.	CINNAMOMUM BURMANII	陰香	HEAVY STD	AS SHOWN	Ball & Burlap
8	LAG. SPE.	LAGERSTROEMIA SPECIOSA	大葉紫薇	HEAVY STD	AS SHOWN	Ball & Burlap
121	TOTAL					
PLANTING SCHEDULE - SHRUBS						
QTY	CODE	BOTANICAL NAME	CHINESE NAME	SIZE (HT MMxSPD) (MM)	SPACING (MM)	REMARK
3070	IXO. COC.	IXORA COCCINEA	龍船花	300(H) X 300(W)	300	
21000	RHO. SIM.	RHODODENDRON SIMSII (random colour)	紅杜鵑	300(H) X 300(W)	250	
24070	TOTAL					

AREA UNDER TREE FELLING APPLICATION REF: (30) IN LM (1) LCS 1 GLA HQ 420/03 DATED 28 OCTOBER 2003						
PLANTING SCHEDULE - TREES						
QTY	CODE	BOTANICAL NAME	CHINESE NAME	SIZE (HT MMxSPD) (MM)	SPACING (MM)	REMARK
8	FIC. MIC.	FICUS MICROCARPA	細葉榕	HEAVY STD	AS SHOWN	Ball & Burlap
8	TOTAL					
PLANTING SCHEDULE - SHRUBS						
QTY	CODE	BOTANICAL NAME	CHINESE NAME	SIZE (HT MMxSPD) (MM)	SPACING (MM)	REMARK
3412 SQM		HYDROSEEDING				
1725 SQM		WOODLAND MIX (WHIP)				
120	ACA. CON.	ACACIA CONFUSA	10% 台灣相思	WHIP	1500	
120	CEL. SIN.	CELTIS SINENSIS	10% 朴樹	WHIP	1500	
120	FIC. MIC.	FICUS MICROCARPA	10% 細葉榕	WHIP	1500	
120	LIT. MON.	LITSEA MONOPETALA	10% 假柿樹	WHIP	1500	
180	CAS. FIS.	CASTANOPSIS FISSA	15% 裂斗雞栗	WHIP	1500	
180	CIN. CAM.	CINNAMOMUM CAMPHORA	15% 薰莨	WHIP	1500	
180	EUC. ROB.	EUCALYPTUS ROBUSTA	15% 大葉桉	WHIP	1500	
180	MEL. EUC.	MELALEUCA LEUCADENDRON	15% 白千層	WHIP	1500	
1200	TOTAL					

- NOTES :
1. ALL DIMENSIONS ARE IN MILLIMETRES UNLESS OTHERWISE SPECIFIED.
 2. FOR LANDSCAPE SOFTWARE SPECIFICATIONS REFER TO STANDARD SPECIFICATIONS FOR ARCHITECTURE WORKS SECTION TO LANDSCAPE SOFTWARE.
 3. FOR LANDSCAPE SOFTWARE CONSTRUCTION DETAILS REFER TO DWG No.: KDB400-LA-8501.
 4. INDIVIDUAL SPECIES WITHIN THE WOODLAND MIX SHALL BE PLANTED IN GROUPS OF 9 TO 15 OF THE SAME SPECIES.
 5. ALL PLANTS ARE TO BE PLANTED IN STAGGERED PATTERN AT SPACING INDICATED IN THE SCHEDULE.
 6. EXTENT OF SHRUB PLANTING AREA BY ENGINEER TO BE DETERMINED ON SITE

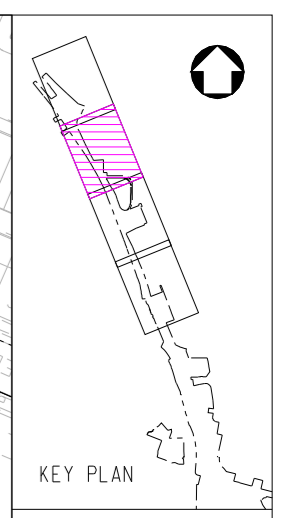
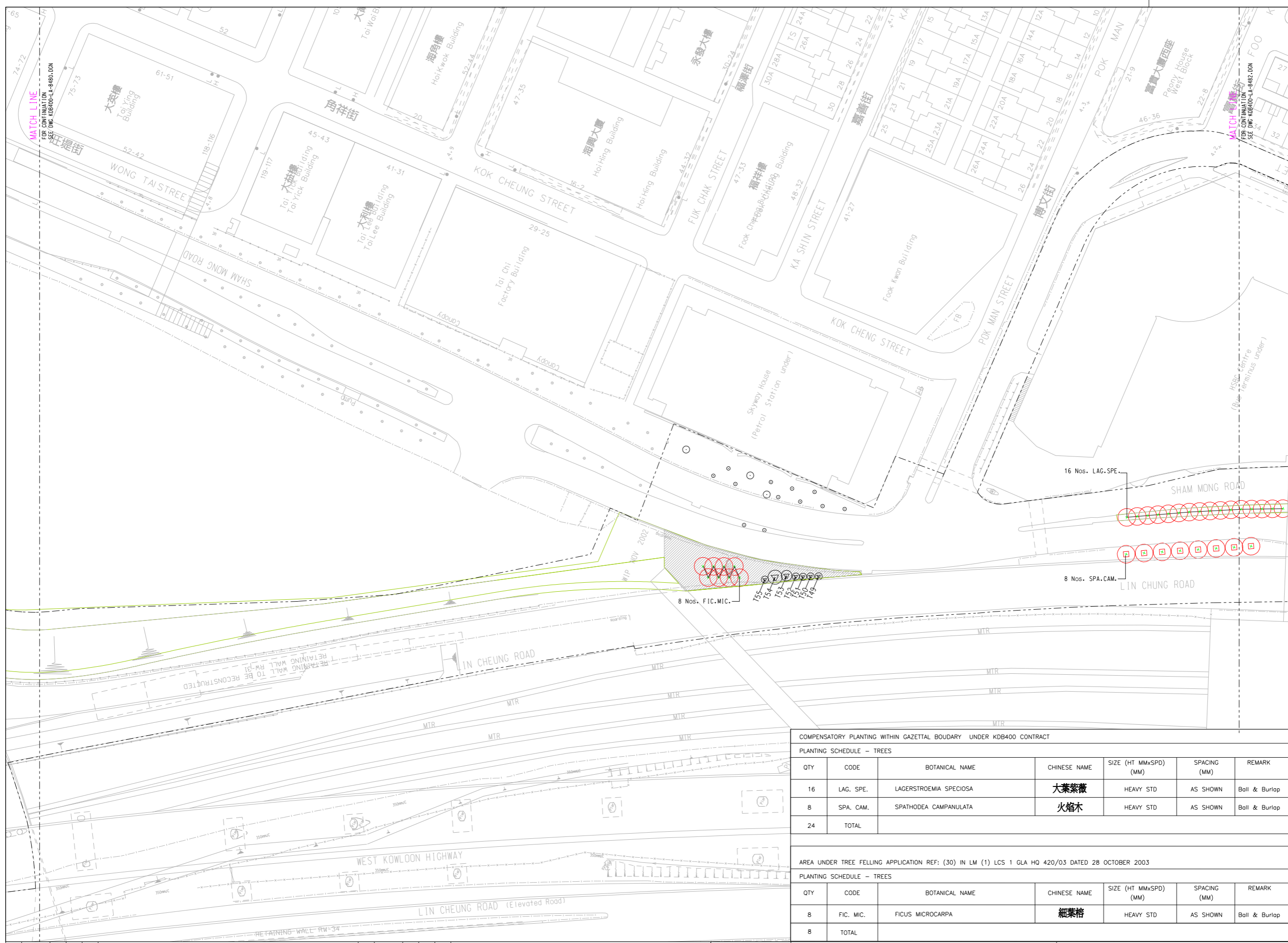
REV	DATE	BY	SUB	APP	DESCRIPTION
1	11JUN09	ML			AS-CONSTRUCTED DRAWINGS
2	20MAY09	ML			REVISED NOS. OF TREE
3	20AUG06	ARO			EP SUBMISSION AMENDMENT 2
4	24JUN06	ARO			EP SUBMISSION AMENDMENT 1
5	31MAR06	ARO			EP SUBMISSION

DESIGNED BY A R OSBORNE	PROJECT MANAGER:  九龍南線 Kowloon Southern Link
DRAWN BY B MAK	
CHECKED BY C K CHUNG	OWNER: 
IN CHARGE NUW HENRY	 Supported by JACOBS BARTIE IDA WSP ADI
DATE 31MAR2006	

TITLE KDB400 TUNNELS - YAU MA TEI VENT BUILDING TO NAM CHEONG OVERUN YAU MA TEI VENTILATION BUILDING TO HOI FAI ROAD PLANT SCHEDULE			
ORIGINATOR AD1	ORIGINATOR REFERENCE KDB400-LA-8401.dgn	SCALE 1 : 500 @ A1	
DRAWING NUMBER KDB400/LA/8401	REV 0	RAILWAY LOCATION KSL TUN	STAGE SHEET NO Z

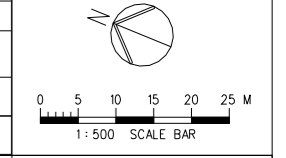
Maps reproduced with permission of The Director of Lands, (C) Hong Kong Government.

\$USER\$
 FILENAME: \$FILES\$
 PLOT DRY: \$PLOTDRY\$
 PRINTED BY: \$USER\$
 MODELNAME: \$MODEL\$
 \$DATE\$ \$TIME\$



- LEGEND :**
- GAZETTED BOUNDARY
 - AREA UNDER TREE FELLING APPLICATION REF: (30) IN LM (1) LCS 1 GLA HQ 420/03 DATED 28 OCTOBER 2003
 - EXISTING TREE OUTSIDE GAZETTED BOUNDARY
 - EXISTING TREE WITHIN GAZETTED BOUNDARY UNDER KDB400 CONTRACT TO BE RETAINED
 - TREES TO BE REINSTATED
 - PROPOSED COMPENSATORY TREES
 - PROPOSED COMPENSATORY TREES IN PAVED AREA
 - PLANTER

- NOTES :**
1. ALL DIMENSIONS ARE IN MILLIMETRES UNLESS OTHERWISE SPECIFIED.
 2. ALL LEVELS ARE IN METRES ABOVE PRINCIPAL DATUM.
 3. FOR LANDSCAPE SOFTWARES SPECIFICATIONS REFER TO STANDARD SPECIFICATIONS FOR ARCHITECTURE WORKS SECTION TO LANDSCAPE SOFTWARES.
 4. FOR LANDSCAPE SOFTWARES CONSTRUCTION DETAILS REFER TO DWG No.1 KDB400-LA-8501.
 5. REFER TO HIGHWAYS DEPARTMENT STANDARD DRAWINGS HS108B AND HS109A FOR TREE PIT IN PAVED AREA DETAILS.



COMPENSATORY PLANTING WITHIN GAZETTED BOUNDARY UNDER KDB400 CONTRACT

PLANTING SCHEDULE - TREES

QTY	CODE	BOTANICAL NAME	CHINESE NAME	SIZE (HT MMxSPD) (MM)	SPACING (MM)	REMARK
16	LAG. SPE.	LAGERSTROEMIA SPECIOSA	大葉紫薇	HEAVY STD	AS SHOWN	Ball & Burlap
8	SPA. CAM.	SPATHODEA CAMPANULATA	火焰木	HEAVY STD	AS SHOWN	Ball & Burlap
24	TOTAL					

AREA UNDER TREE FELLING APPLICATION REF: (30) IN LM (1) LCS 1 GLA HQ 420/03 DATED 28 OCTOBER 2003

PLANTING SCHEDULE - TREES

QTY	CODE	BOTANICAL NAME	CHINESE NAME	SIZE (HT MMxSPD) (MM)	SPACING (MM)	REMARK
8	FIC. MIC.	FICUS MICROCARPA	細葉榕	HEAVY STD	AS SHOWN	Ball & Burlap
8	TOTAL					

REV	DATE	BY	SUB	APP	DESCRIPTION
△	11JUN09	ARO			AS-CONSTRUCTED DRAWINGS
△	14MAY09	ARO			REVISED NOS. OF TREE
△	24JUN06	ARO			EP SUBMISSION AMENDMENT 1
△	31MAR06	ARO			EP SUBMISSION

REV	DATE	BY	SUB	APP	DESCRIPTION

DESIGNED BY
A R OSBORNE

DRAWN BY
B MAK

CHECKED BY
C K CHUNG

IN CHARGE
N L W HENRY

DATE
31MAR2006

PROJECT MANAGER: **九龍南線**
Kowloon Southern Link

OWNER: **中國鐵路工程(香港)有限公司**
CHINA STATE CONSTRUCTION ENGRG. (HONG KONG) LTD.

JACOBS BABTIE Supported by
IDA WSP AD1

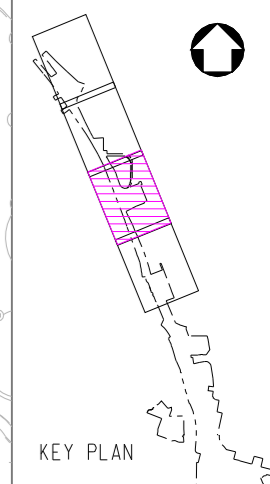
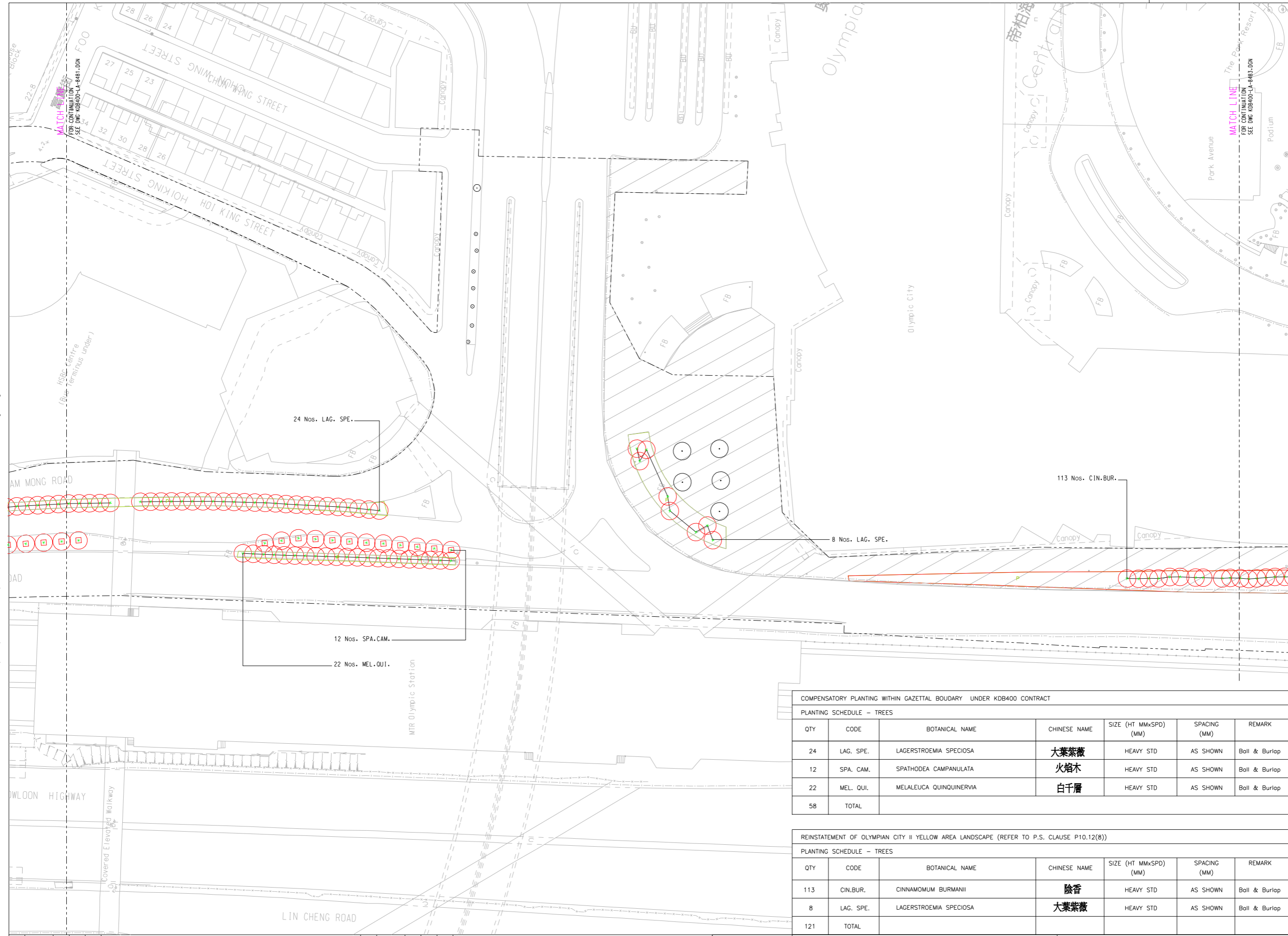
TITLE
KDB400 TUNNELS - YAU MA TEI VENT BUILDING TO NAM CHEONG OVERUN
YAU MA TEI VENTILATION BUILDING TO HOI FAI ROAD
PLANTING PLAN - TREES

SCALE 1 : 500 @ A1

ORIGINATOR	AD1	ORIGINATOR REFERENCE	KDB400-LA-8481.dgn
DRAWING NUMBER	KDB400 /LA/ 8481 0		
RAILWAY	LOCATION	STAGE	SHEET NO
KSL	TUN	Z	2 OF 4

FULL SIZE A1

Maps reproduced with permission of The Director of Lands, (C) Hong Kong Government.



- LEGEND :**
- GAZETTED BOUNDARY
 - OLYMPIAN CITY II TOA LANDSCAPE HARDWORKS TO BE REINSTATED TO MATCH FORMER CONDITION SUBJECT TO AGREEMENT WITH OWNER
 - EXISTING TREE OUTSIDE GAZETTED BOUNDARY
 - EXISTING TREE WITHIN GAZETTED BOUNDARY UNDER KDB400 CONTRACT TO BE RETAINED
 - TREES TO BE REINSTATED
 - PROPOSED COMPENSATORY TREES
 - PROPOSED COMPENSATORY TREES IN PAVED AREA
 - PLANTER

- NOTES :**
1. ALL DIMENSIONS ARE IN MILLIMETRES UNLESS OTHERWISE SPECIFIED.
 2. ALL LEVELS ARE IN METRES ABOVE PRINCIPAL DATUM.
 3. FOR LANDSCAPE SOFTWARES SPECIFICATIONS REFER TO STANDARD SPECIFICATIONS FOR ARCHITECTURE WORKS SECTION 70 LANDSCAPE SOFTWARES.
 4. FOR LANDSCAPE SOFTWARES CONSTRUCTION DETAILS REFER TO DWG No.: KDB400-LA-8501.
 5. REFER TO HIGHWAYS DEPARTMENT STANDARD DRAWINGS HS108B AND HS109A FOR TREE PIT IN PAVED AREA DETAILS.

COMPENSATORY PLANTING WITHIN GAZETTED BOUNDARY UNDER KDB400 CONTRACT

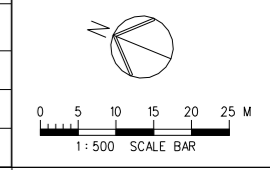
PLANTING SCHEDULE - TREES

QTY	CODE	BOTANICAL NAME	CHINESE NAME	SIZE (HT MMxSPD) (MM)	SPACING (MM)	REMARK
24	LAG. SPE.	LAGERSTROEMIA SPECIOSA	大葉紫薇	HEAVY STD	AS SHOWN	Ball & Burlap
12	SPA. CAM.	SPATHODEA CAMPANULATA	火焰木	HEAVY STD	AS SHOWN	Ball & Burlap
22	MEL. QUI.	MELALEUCA QUINQUINERVA	白千層	HEAVY STD	AS SHOWN	Ball & Burlap
58	TOTAL					

REINSTATEMENT OF OLYMPIAN CITY II YELLOW AREA LANDSCAPE (REFER TO P.S. CLAUSE P10.12(8))

PLANTING SCHEDULE - TREES

QTY	CODE	BOTANICAL NAME	CHINESE NAME	SIZE (HT MMxSPD) (MM)	SPACING (MM)	REMARK
113	CIN. BUR.	CINNAMOMUM BURMANII	陰香	HEAVY STD	AS SHOWN	Ball & Burlap
8	LAG. SPE.	LAGERSTROEMIA SPECIOSA	大葉紫薇	HEAVY STD	AS SHOWN	Ball & Burlap
121	TOTAL					



REV	DATE	BY	SUB	APP	DESCRIPTION
△	11JUN09	ARQ			AS-CONSTRUCTED DRAWINGS
△	14MAY09	ARQ			REVISED NOS. OF TREE
△	24JUN06	ARQ			EP SUBMISSION AMENDMENT 1
△	31MAR06	ARQ			EP SUBMISSION

DESIGNED BY
A R OSBORNE

DRAWN BY
B MAK

CHECKED BY
C K CHUNG

IN CHARGE
N L W HENRY

DATE
31MAR2006

PROJECT MANAGER:
MTR 九龍南線
Kowloon Southern Link

OWNER:
KCR

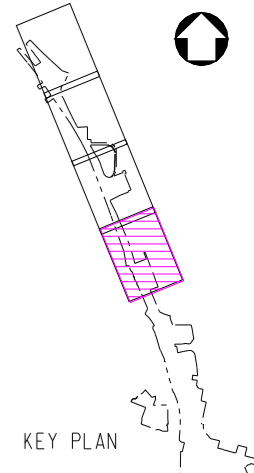
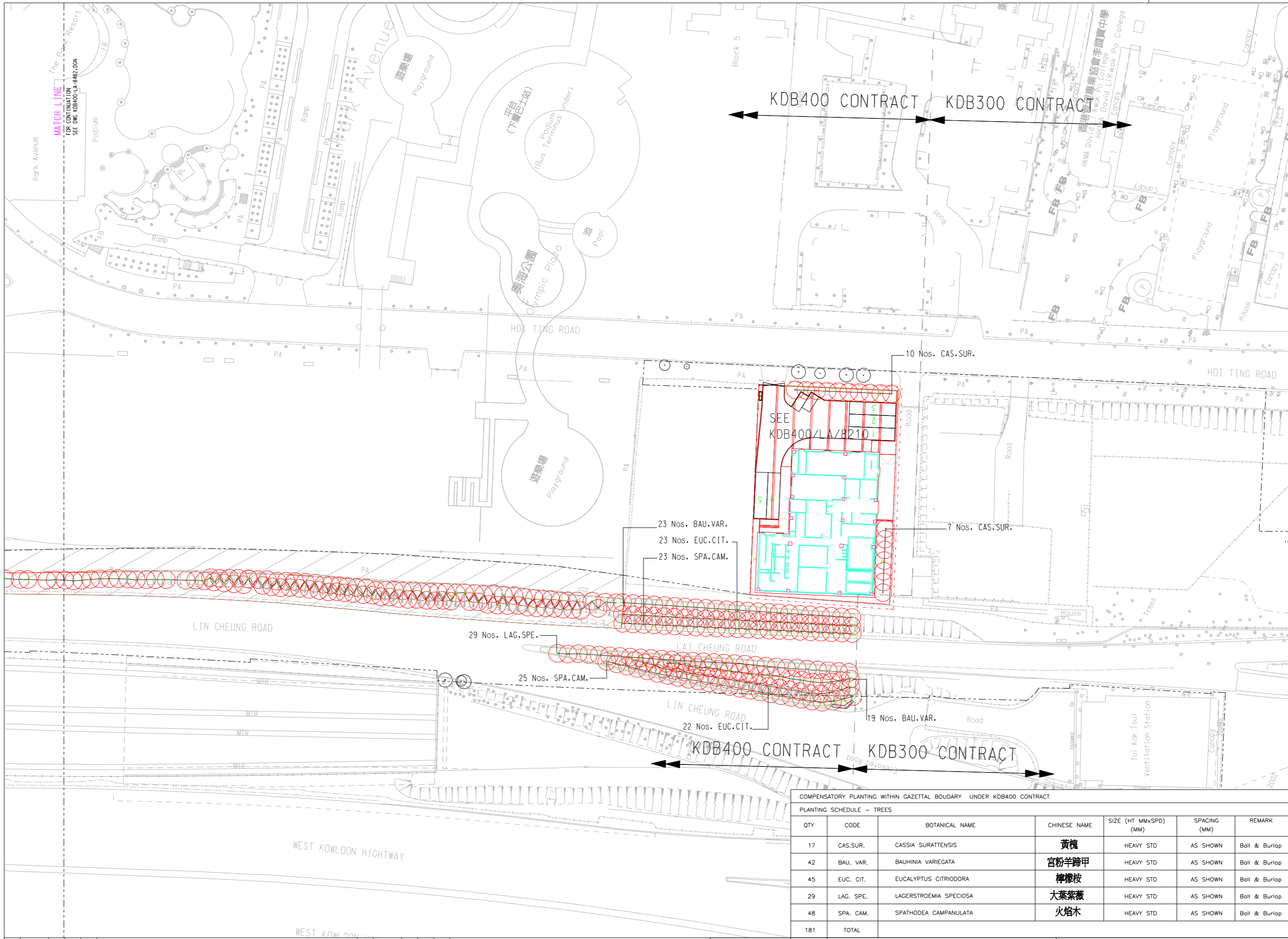
中國建築工程(香港)有限公司
CHINA STATE CONSTRUCTION ENGRG. (HONG KONG) LTD.
JACOBS BARTIE Supported by
IDA WSP AD1

TITLE
KDB400 TUNNELS - YAU MA TEI VENT
BUILDING TO NAM CHEONG OVERUN
YAU MA TEI VENTILATION BUILDING
TO HOI FAI ROAD
PLANTING PLAN - TREES

SCALE 1 : 500 @ A1

ORIGINATOR AD1	ORIGINATOR REFERENCE KDB400-LA-8482.dgn
DRAWING NUMBER KDB400/LA/8482	REV 0
RAILWAY LOCATION KSL	STAGE Z
LOCATION TUN	SHEET NO 3 OF 4

FULL SIZE A1

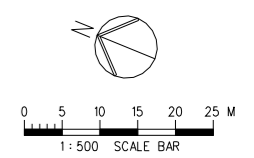


- LEGEND :**
- GAZETTL BOUNDARY
 - ▨ OLYMPIAN CITY II TOA LANDSCAPE HARDWORKS TO BE REINSTATED TO MATCH FORMER CONDITION SUBJECT TO AGREEMENT WITH OWNER
 - - - WORK BOUNDARY AT YAU MA TEI VENTILATION BUILDING
 - ☼ EXISTING TREE OUTSIDE GAZETTL BOUNDARY
 - EXISTING TREE WITHIN GAZETTL BOUNDARY UNDER KDB400 CONTRACT TO BE RETAINED
 - △ TREES TO BE REINSTATED
 - ★ PROPOSED COMPENSATORY TREES
 - ⊠ PROPOSED COMPENSATORY TREES IN PAVED AREA
 - P PLANTER

- NOTES :**
1. ALL DIMENSIONS ARE IN MILLIMETRES UNLESS OTHERWISE SPECIFIED.
 2. ALL LEVELS ARE IN METRES ABOVE PRINCIPAL DATUM.
 3. FOR LANDSCAPE SOFTWARES SPECIFICATIONS REFER TO STANDARD SPECIFICATIONS FOR ARCHITECTURE WORKS SECTION TO LANDSCAPE SOFTWARES.
 4. FOR LANDSCAPE SOFTWARES CONSTRUCTION DETAILS REFER TO DWG No.: KDB400-LA-8501.
 5. REFER TO HIGHWAYS DEPARTMENT STANDARD DRAWINGS H5108B AND H5109A FOR TREE PIT IN PAVED AREA DETAILS.

COMPENSATORY PLANTING WITHIN GAZETTL BOUDARY UNDER KDB400 CONTRACT

PLANTING SCHEDULE - TREES						
QTY	CODE	BOTANICAL NAME	CHINESE NAME	SIZE (HT MMxSPD) (MM)	SPACING (MM)	REMARK
17	CAS.SUR.	CASSIA SURATTENSIS	黃槐	HEAVY STD	AS SHOWN	Ball & Burlap
42	BAU. VAR.	BAUHINIA VARIEGATA	宮粉羊蹄甲	HEAVY STD	AS SHOWN	Ball & Burlap
45	EUC. CIT.	EUCALYPTUS CITRIODORA	檸檬桉	HEAVY STD	AS SHOWN	Ball & Burlap
29	LAG. SPE.	LAGERSTROEMIA SPECIOSA	大葉紫薇	HEAVY STD	AS SHOWN	Ball & Burlap
48	SPA. CAM.	SPATHODEA CAMPANULATA	火焰木	HEAVY STD	AS SHOWN	Ball & Burlap
181	TOTAL					



REV	DATE	BY	SUB	APP	DESCRIPTION
△	11JUN09	ARO			AS-CONSTRUCTED DRAWINGS
△	24JUN06	ARO			EP SUBMISSION AMENDMENT 1
△	31MAR06	ARO			EP SUBMISSION

DESIGNED BY
A R OSBORNE
 DRAWN BY
B MAK
 CHECKED BY
C K CHUNG
 IN CHARGE
NJW HENRY
 DATE
31MAR2006

PROJECT MANAGER: **MTR** 九龍南線
 OWNER: **KCR** Kowloon Southern Link
JACOBS BARTIE CHINA STATE CONSTRUCTION ENGRG. (HONG KONG) LTD.
 Supported by
IDA WSP AD1

TITLE
 KDB400 TUNNELS - YAU MA TEI VENT
 BUILDING TO NAM CHEONG OVERUN
 YAU MA TEI VENTILATION BUILDING
 TO HOI FAI ROAD
 PLANTING PLAN - TREES

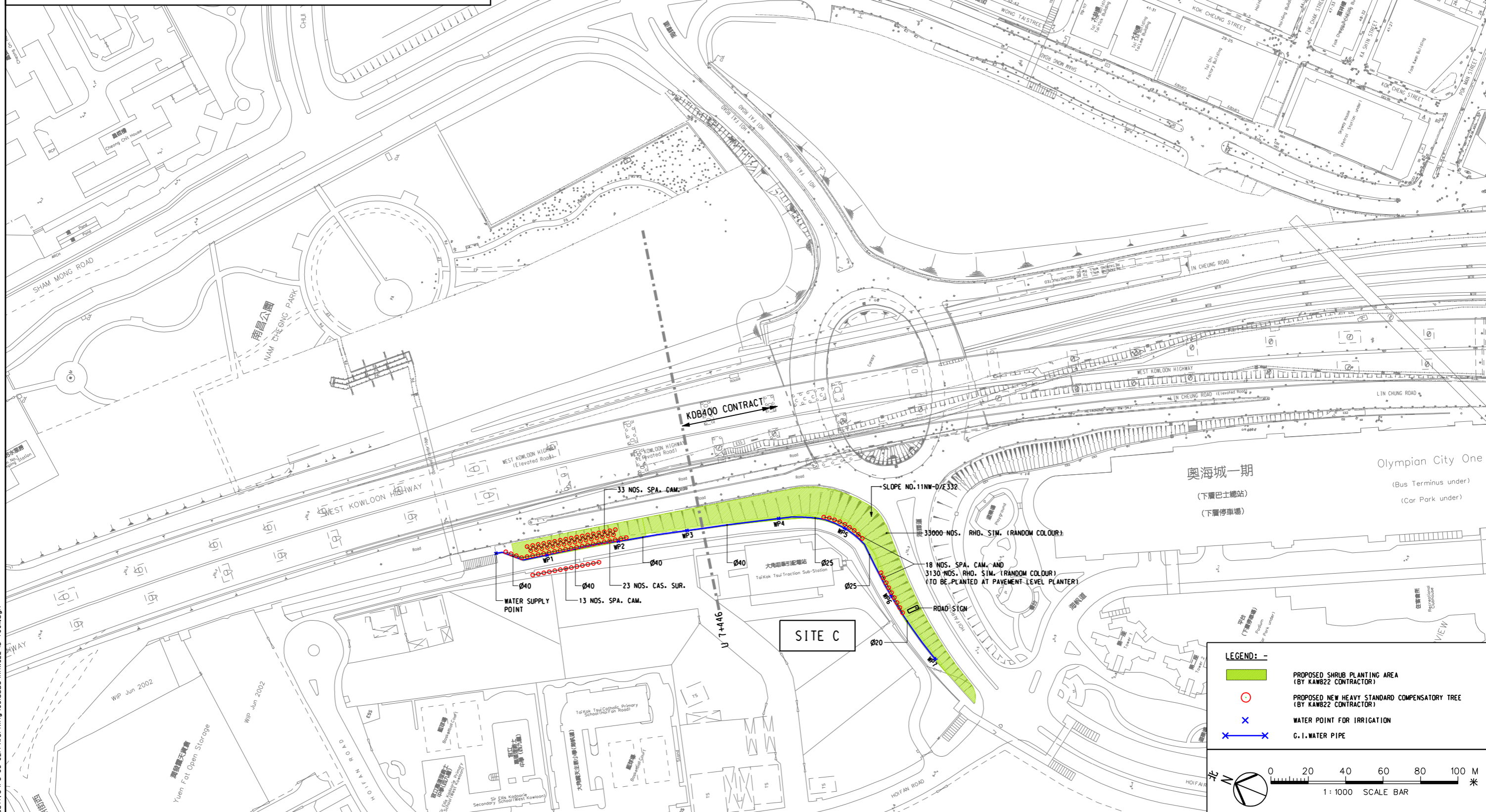
SCALE 1 : 500 @ A1

ORIGINATOR	ORIGINATOR REFERENCE		
AD1	KDB400-LA-8483.dgn		
DRAWING NUMBER	REV		
KDB400/LA/8483	0		
RAILWAY	LOCATION	STAGE	SHEET NO
KSL	TUN	Z	4 OF 4

FULL SIZE A1

KOWLOON SOUTHERN LINK
KAWB22 PLANTING SCHEDULE
COMPENSATORY PLANTING OUTSIDE KSL GAZETAL BOUNDARY

ABB	Botanical Name	Chinese Name	Spacing (mm)	Size (mm)	Remark	QTY
TREE						
SPA. CAM.	SPATHODEA CAMPANULATA	火絨木	As Shown	Heavy Standard	Ball & Burlap	64
CAS. SUR.	CASSIA SURATTENSIS	黃槐	As Shown	Heavy Standard	Ball & Burlap	23
Total						87
SHRUBS						
RHO. SIM.	RHOODENDRON SIMSII (RANDOM COLOUR)	紅杜鵑	250	300(H) X 300(W)	Ball & Burlap	Approx. 36,130
Total						Approx. 36,130



LEGEND: -

- █ PROPOSED SHRUB PLANTING AREA (BY KAWB22 CONTRACTOR)
- PROPOSED NEW HEAVY STANDARD COMPENSATORY TREE (BY KAWB22 CONTRACTOR)
- x WATER POINT FOR IRRIGATION
- G.I. WATER PIPE

SCALE BAR
 0 20 40 60 80 100 M
 1: 1000 SCALE BAR

User: Workspace ca\codapps\metn\08050235\Workspace\Users\FF.KSL.ucf, UserRef ca\codapps\metn\08050235\Workspace\Projects\FF.KSL.pcf
 PLOT: DRV:G:\CAD\KSL\KSL_pilot\drv\pdrf_krcr_c300dpi_hpcl\U5550.pht
 PRINTED BY: n052238 01/06/07 11:54:12
 FILENAME: us\nt\KJ\active\3-05-0204\working\03issue\KAWB22-ib-1001.dgn

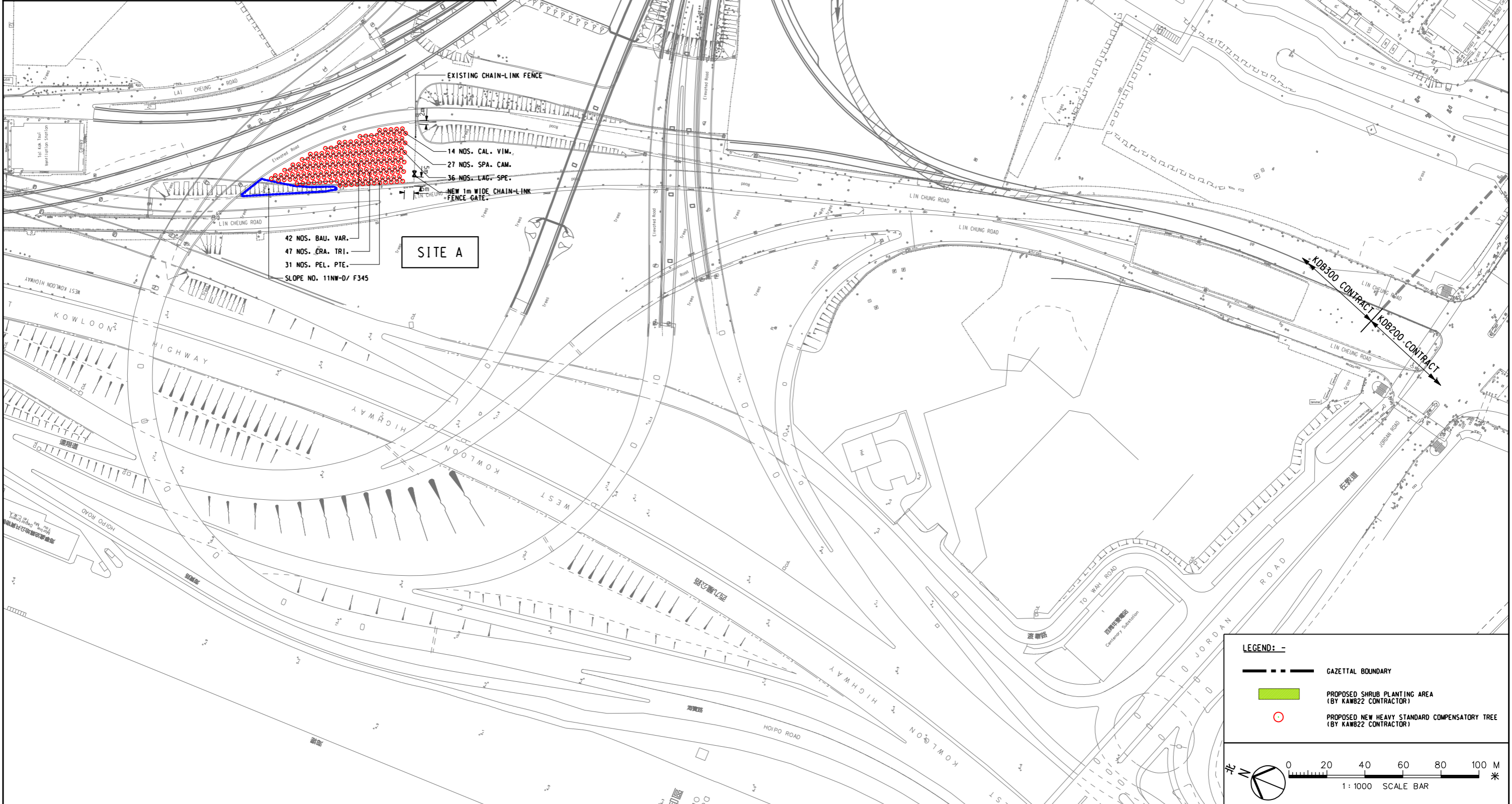
REV	DATE	BY	SUB	APP	DESCRIPTION

REV	DATE	BY	SUB	APP	AS-BUILT DRAWING DESCRIPTION
△	28MAY07	KK	DK	TFK	AS-BUILT DRAWING

DESIGNED BY KPF	 	TITLE							
DRAWN BY FF		TREE TRANSPLANTING COMPENSATORY PLANTING PLAN BY KAWB22 CONTRACTOR SHEET 1 OF 2							
CHECKED BY DK		SCALE 1: 1000 @ A1							
IN CHARGE TFK DATE 28MAY2007		<table border="1"> <tr> <td>ORIGINATOR KCR</td> <td>ORIGINATOR REFERENCE REF NO</td> </tr> <tr> <td>DRAWING NUMBER KAWB22/LB/T0011</td> <td>REV 0</td> </tr> <tr> <td>RAILWAY LOCATION KSL 000</td> <td>STAGE Z</td> </tr> <tr> <td colspan="2">SHEET NO</td> </tr> </table>	ORIGINATOR KCR	ORIGINATOR REFERENCE REF NO	DRAWING NUMBER KAWB22/LB/T0011	REV 0	RAILWAY LOCATION KSL 000	STAGE Z	SHEET NO
ORIGINATOR KCR	ORIGINATOR REFERENCE REF NO								
DRAWING NUMBER KAWB22/LB/T0011	REV 0								
RAILWAY LOCATION KSL 000	STAGE Z								
SHEET NO									

**KOWLOON SOUTHERN LINK
KAW822 PLANTING SCHEDULE
COMPENSATORY PLANTING OUTSIDE KSL GAZETAL BOUNDARY**

ABB	Botanical Name	Chinese Name	Spacing (mm)	Size (mm)	Remark	QTY
SPA. CAM.	SPATHODEA CAMPANULATA	火絨木	As Shown	Heavy Standard	Ball & Burlap	27
CAL. VIM.	CALLISTEMON VIMINALIS	串錢柳	As Shown	Heavy Standard	Ball & Burlap	14
LAG. SPE.	LAGERSTROEMIA SPECIOSA	洋紫荊	As Shown	Heavy Standard	Ball & Burlap	36
BAU. VAR.	BAUHINIA VARIEGATA	官粉羊蹄甲	As Shown	Heavy Standard	Ball & Burlap	42
CRA. TRI.	CRATAEVA TRIFOLIATA	魚木	As Shown	Heavy Standard	Ball & Burlap	47
PEL. PTE.	PELTOPHORUM PTEROCARPUM	雙翼豆	As Shown	Heavy Standard	Ball & Burlap	31
Total						197



Maps reproduced with permission of The Director of Lands, (C) Hong Kong Government.

REV	DATE	BY	SUB	APP	DESCRIPTION

REV	DATE	BY	SUB	APP	DESCRIPTION

DESIGNED BY KPF
DRAWN BY FF
CHECKED BY DK
IN CHARGE TFK
DATE 28MAY2007

KCR 九龍南線
Kowloon Southern Link

怡生花園有限公司
Yee Sun Garden Ltd.

TITLE
**TREE TRANSPLANTING
COMPENSATORY PLANTING PLAN
BY KAW822 CONTRACTOR**
SHEET 2 OF 2

SCALE 1 : 1000 @ A1	
ORIGINATOR KCR	ORIGINATOR REFERENCE REF NO
DRAWING NUMBER KAW822 / LB/T0012	REV 0
RAILWAY LOCATION KSL 000	STAGE SHEET NO Z

UserWorkSpace c:\codapps\Wsm\08050235\WorkSpace\Users\FF.KSL\cuf, UserRef c:\codapps\Wsm\08050235\WorkSpace\Projects\VF_KSL.pcf
 PLOT : DRV:G:\CAD\KSL\KSL_pilotdrv\pdf_krcr_300dpi_hpcl\U5550.ppt
 PRINTED BY: r052238 01/06/07 11:53:03
 FILENAME : u:\nt\k\j\active\vr3-05-0214\working\031issue\KAW822-ib-f002.dgn