

**PROJECT NO.: TCS00371/07**

**DRAINAGE SERVICES DEPARTMENT (DSD)**

**CONTRACT NO. DC/2006/02**

**YUEN LONG, KAM TIN, NGAU TAM MEI AND TIN SHUI  
WAI DRAINAGE IMPROVEMENTS, STAGE 1, PHASE  
2B – CHEUNG CHUN SAN TSUEN AND KAM TSIN WAI**



**KT15 – Quarterly EM&A Summary Report (July  
2007 to September 2007) (No.1)**

**(Revision: 1)**

**PREPARED FOR**

**Chit Cheung Construction Company Limited**

**Quality Index**

<b>Date</b>	<b>Reference No.</b>	<b>Prepared by</b>	<b>Certified By</b>
22 October 2007	TCS00371/07/600/R0207	Ben Tam (Project Supervisor)	Ken Wong (Project Environmental Team Leader)
			

This report has been prepared by Action-United Environmental Services & Consulting with all reasonable skill, care and diligence within the terms of the Agreement with the client, incorporating our General Terms and Conditions of Business and taking account of the resources devoted to it by agreement with the client. We disclaim any responsibility to the client and others in respect of any matters outside the scope of the above. This report is confidential to the client and we accept no responsibility of whatsoever nature to third parties to whom this report, or any part thereof, is made known. Any such party relies upon the report at their own risk.

## TABLE OF CONTENTS

<b>1.0</b>	<b>INTRODUCTION</b>	<b>1</b>
<b>2.0</b>	<b>PROJECT ORGANISATION AND CONSTRUCTION PROGRESS</b>	<b>2</b>
<b>3.0</b>	<b>SUMMARY OF IMPACT MONITORING REQUIREMENTS</b>	<b>3</b>
<b>4.0</b>	<b>IMPACT MONITORING METHODOLOGY</b>	<b>5</b>
<b>5.0</b>	<b>IMPACT MONITORING RESULTS</b>	<b>6</b>
<b>6.0</b>	<b>WASTE MANAGEMENT</b>	<b>8</b>
<b>7.0</b>	<b>SITE INSPECTION</b>	<b>8</b>
<b>8.0</b>	<b>ENVIRONMENTAL COMPLAINT AND NON-COMPLIANCE</b>	<b>9</b>
<b>9.0</b>	<b>IMPLEMENTATION STATUS OF MITIGATION MEASURES</b>	<b>10</b>
<b>10.0</b>	<b>CONCLUSIONS</b>	<b>11</b>

### List of Tables

Table 2-1	Major Construction Activities in the Reporting Quarter
Table 2-2	Status of Environmental License and Permits
Table 3-1	Summary of EM&A Requirements
Table 3-2	Action and Limit Levels for Air Quality Monitoring
Table 3-3	Action and Limit Levels for Construction Noise Monitoring
Table 3-4	Action and Limit Levels for Stream Water Quality Monitoring
Table 3-5	Action and Limit Levels for Ecology Monitoring
Table 4-1	Air Quality, Noise and Stream Water Quality Monitoring Station/Locations
Table 5-1	Summary of Exceedances in Ecology Impact Monitoring
Table 6-1	Summary of Quantities of Inert C&D Materials
Table 6-2	Summary of Quantities of C&D Wastes
Table 7-1	Date of Environmental Weekly Site Inspection and Monthly Audit
Table 8-1	Statistical Summary of Environmental Complaints
Table 8-2	Statistical Summary of Environmental Summons
Table 8-3	Statistical Summary of Environmental Prosecution
Table 10-1	Summary of the Exceedances for Impact Monitoring

### List of Appendices

Appendix A	Project Site Layout
Appendix B	Three-Month Construction Program
Appendix C	Environmental Organisation Structure
Appendix D	Locations of Designated Monitoring Station/Locations/Area
Appendix E	Graphical Plots of Air Quality, Noise and Stream Water Quality Monitoring Results
Appendix F	Meteorological Data in the Reporting Quarter
Appendix G	Response to Comments

## **Executive Summary**

- ES.01 Chit Cheung Construction Company Limited (CCC) has been awarded the Drainage Services Department (DSD) Contract No. DC/2006/02 Yuen Long, Kam Tin, Ngau Tam Mei and Tin Shui Wai Drainage Improvements, Stage 1, Phase 2B – Cheung Chun San Tsuen and Kam Tsin Wai (hereinafter “the Project”) on 03 April 2007. According to the contract specification requirements an Environmental Monitoring & Audit program to be implemented by an Independent Environmental Team (ET) throughout the contract period.
- ES.02 Under the Project Profile for Yuen Long, Kam Tin, Ngau Tam Mei and Tin Shui Wai, Drainage Improvement Stage 1 Phase 2B – Kam Tin Secondary Drainage Channels KT14 & KT15 (Ref.: 382047/E/PP/Issue 5), KT14 & KT15 was defined as Designated Project and governed by Environmental Permit (EP-231/2005/A).
- ES.03 Action-United Environmental Services and Consulting (AUES) has been commissioned by CCC to be an Independent Environmental Team (ET) to implement the EM&A program in compliance with the requirements as stated in the Environmental Permit (EP-231/2005/A) and Environmental Monitoring & Audit Manual (EM&A Manual) for Secondary Channel KT14 & KT15 (August 2005). For this Contract (DC/2006/02) only covered KT15 and KT14 will carried out under other contract.
- ES.04 This is the 1<sup>st</sup> Quarterly Summary Report (July 2007 – September 2007) reporting the environmental impact monitoring and audit (EM&A) results of the project EM&A program for the reporting quarter from 20 July to 25 September 2007.

## **Breach of Action and Limit (AL) Levels**

- ES.05 Two Limit Level exceedances were recorded in ecology during this reporting quarter. The wetland dependent bird in August and September 2007 fell within the limit level, but the non-compliance was not considered to be caused by the project, as the major construction works have not commenced. No Action/Limit Level exceedance was recorded for air, noise and stream water in this reporting period. No Action/Limit Level exceedance was recorded for air, noise and stream water in this reporting period.

## **Complaints Log**

- ES.06 No environmental complaint was received in this reporting quarter.

## **Notifications of Any Summons and Successful Prosecutions**

- ES.07 There was no environmental summons or successful prosecution was recorded in this reporting quarter.

## **Reporting Changes**

- ES.08 There are no changes to be reported in this reporting quarter.

**Construction Activities in the Reporting Quarter**

ES.09 Construction activities in the reporting quarter (20 July 2007 – 25 September 2007) are listed in the following table:-

Reporting Period	Construction Activities
20 July – 25 July 2007	<ul style="list-style-type: none"> <li>• Erection of project sign board at Portion 8;</li> <li>• Site clearance;</li> <li>• Erection of hoarding at CH040 - 070; and</li> <li>• Tree transplanting works.</li> </ul>
26 July – 25 August 2007	<ul style="list-style-type: none"> <li>• Erection of project sign board at Portion 6 and Portion 8;</li> <li>• Site clearance; and</li> <li>• Tree transplanting works.</li> </ul>
26 August – 25 September 2007	<ul style="list-style-type: none"> <li>• Provision of temporary entrance at portion 5;</li> <li>• Construction of temporary noise barrier along ch.230 to ch.327 of portion 5;</li> <li>• Construction of hoarding at ch.419 and ch.427 of portion 5;</li> <li>• Installation of geotechnical instruments;</li> <li>• Channel wall construction at ch.290 of portion 5;</li> <li>• Tree protection and tree transplanting works;</li> <li>• Site Clearance work;</li> <li>• Construction and excavation works at portion 5;</li> <li>• Utilities companies liaison and underground utility ducting detection; and</li> <li>• Carrying out joined survey.</li> </ul>

ES.10 Potential environmental impacts for this project generally include air quality, noise, ecology, surface runoff and construction waste. The contractor shall properly implement the required environmental mitigation measures as per the Implementation Schedule in the EM&A manual to ensure no significant adverse environmental impact arises from the construction works. The contractor was reminded to maintain good house-keeping throughout the construction phase.

**EM&A Activities in the Reporting Quarter**

ES.11 A summary of the monitoring activities in this reporting quarter is listed below:

• 1-Hour TSP Monitoring	36	Events
• 24-Hour TSP Monitoring	12	Events
• Noise Monitoring	12	Events
• Stream Water Quality	38	Events
• Ecology (Fauna)	3	Event
• Site Inspection Audit	10	Times

**Air Quality**

ES.12 No Action or Limit Level of 1-Hour and 24-Hour TSP exceedance was recorded in this reporting quarter.

**Construction Noise**

ES.13 No exceedance in construction noise measurements was recorded and no construction noise complaint was received in this reporting quarter.

**Stream Water Quality**

ES.14 No exceedance in stream water quality was recorded in the reporting quarter.

**Ecology (Fauna)**

ES.15 Two Limit Level exceedances were found in the wetland dependent bird recorded during the reporting quarter. But it was not considered a consequence of the project as the major construction works for the project have not commenced.

**Summary of Monitoring Exceedances**

ES.16 A summary of monitoring exceedances in this reporting quarter of air quality, noise, stream water quality and ecology (fauna) monitoring are presented below:

Env. Quality	Parameters	Work-Related Exceedance %	Investigation & Corrective Actions
Air Quality	1-Hour TSP	0	Not Required for 0% Exceedance
	24-Hour TSP	0	Not Required for 0% Exceedance
Noise	Leq (30min) Daytime	0	Not Required for 0% Exceedance
Stream Water	Dissolve Oxygen (DO)	0	Not Required for 0% Exceedance
	Suspended Solids (SS)	0	Not Required for 0% Exceedance
	Turbidity (NTU)	0	Not Required for 0% Exceedance
	pH	0	Not Required for 0% Exceedance
	Ammonia Nitrogen	0	Not Required for 0% Exceedance
	Zinc	0	Not Required for 0% Exceedance
Ecology	Fauna	0	Not Required for 0% Exceedance

## 1.0 INTRODUCTION

- 1.01 Chit Cheung Construction Company Limited (CCC) has been awarded the Drainage Services Department (DSD) Contract No. DC/2006/02 Yuen Long, Kam Tin, Ngau Tam Mei and Tin Shui Wai Drainage Improvements, Stage 1, Phase 2B – Cheung Chun San Tsuen and Kam Tsin Wai (hereinafter “the Project”) on 03 April 2007. According to the contract specification requirements the Project should implemented an Environmental Monitoring & Audit (EM&A) program by an Independent Environmental Team (ET) throughout the construction period in compliance with the requirements as stated in the project particular specification, Environmental Permit (EP-231/2005/A) and EM&A Manual for KT15. The location of the project site is presented in **Appendix A**. The project construction program is presented in **Appendix B**.
- 1.02 The works to be executed at the propose drainage Channel KT15 mainly comprise the following:
- Construction of about 0.8 km secondary drainage channels;
  - Construction of DSD maintenances access;
  - Provisioning and re-provisioning of pedestrian crossings;
  - Associated ancillary works; and
  - Construction of temporary vehicular access in Portion 5A1 of the site for vehicular access from Kam Sheung Road to Lot Nos. 398RP, 395 in DD106 which are adjacent to the site.
- 1.03 Action-United Environmental Services and Consulting (AUES) has been commissioned by CCC to be the Independent Environmental Team (ET) for implementation of the EM&A program in accordance with the requirements as set out in the contract particular specification, Environmental Permit (EP-231/2005/A), EM&A Manual for KT15 and the Environment Impact Assessment Ordinance (EIAO).
- 1.04 This report presents the results of the project EM&A program for the reporting quarter **July 2007 to September 2007** during the period from 20 July to 25 September 2007.

### REPORT STRUCTURE

- 1.05 The Quarterly Summary Report is structured into the following sections:

- Section 1** Introduction  
**Section 2** Project Organization and Construction Progress  
**Section 3** Summary of Monitoring Requirements  
**Section 4** Impact Monitoring Methodology  
**Section 5** Impact Monitoring Results  
**Section 6** Waste Management  
**Section 7** Site Inspection  
**Section 8** Environmental Complaint and Non-Compliance  
**Section 9** Implementation Status of Mitigation Measures  
**Section 10** Conclusions

**2.0 PROJECT ORGANIZATION AND CONSTRUCTION PROGRESS****PROJECT ORGANIZATION AND MANAGEMENT STRUCTURE**

- 2.01 The organization chart and lines of communication with respect to the on-site environmental management and monitoring program are shown in **Appendix C**.

**CONSTRUCTION PROGRESS**

- 2.02 The major construction activities undertaken in this reporting quarter were summaries in **Table 2-1**.

**Table 2-1 Major Construction Activities in the Reporting Quarter**

Reporting Period	Construction Activities
20 July – 25 July 2007	<ul style="list-style-type: none"> <li>• Erection of project sign board at Portion 8;</li> <li>• Site clearance;</li> <li>• Erection of hoarding at CH040 - 070; and</li> <li>• Tree transplanting works.</li> </ul>
26 July – 25 August 2007	<ul style="list-style-type: none"> <li>• Erection of project sign board at Portion 6 and Portion 8;</li> <li>• Site clearance; and</li> <li>• Tree transplanting works.</li> </ul>
26 August – 25 September 2007	<ul style="list-style-type: none"> <li>• Provision of temporary entrance at portion 5;</li> <li>• Construction of temporary noise barrier along ch.230 to ch.327 of portion 5;</li> <li>• Construction of hoarding at ch.419 and ch.427 of portion 5;</li> <li>• Installation of geotechnical instruments;</li> <li>• Channel wall construction at ch.290 of portion 5;</li> <li>• Tree protection and tree transplanting works;</li> <li>• Site Clearance work;</li> <li>• Construction and excavation works at portion 5;</li> <li>• Utilities companies liaison and underground utility ducting detection; and</li> <li>• Carrying out joined survey.</li> </ul>

**SUMMARY OF ENVIRONMENTAL SUBMISSIONS**

- 2.03 A summary of the relevant permits, licences, and/or notifications on environmental protection for this Project in this reporting quarter are presented in **Table 2-2**.

**Table 2-2 Status of Environmental Licenses and Permits**

Item	Item Description	License/Permits Status
1	Environmental Permit (EP-231/2005/A)	-
2	Air Pollution Control (Construction Dust)	Notified EPD on 09 July 2007
3	Chemical Waste Producer Registration WPN:5296-519-C3430-01 (Portion 8, Ma Fung Ling Road, Tong Yan San Tsuen, Yuen Long)	Registration on 20 April 2007
4	Chemical Waste Producer Registration WPN:5113-533-C3434-09 (Kam Tsin Wai, Kam Tin, Yuen Long)	Registration on 20 April 2007
5	Chemical Waste Producer Registration WPN:5213-424-C3431-01 (Portion 7, Birthing Area, Hoi Wan Road, Tuen Mun)	Registration on 20 April 2007
6	Water Pollution Control Ordinance (Discharge License) License No.: 1U450/1	Obtained on 20 July 2007
7	Billing Account for Disposal of Construction Waste (Account Number : 7005311)	Valid on 07 May 2007
8	Dumping at Sea Permit of Type II Contaminated Material (Permit No. EP/MD/08-044)	Obtained on 20 September 2007

**3.0 SUMMARY OF IMPACT MONITORING REQUIREMENTS**

- 3.01 Environmental monitoring and audit requirements are set out in the EM&A Manual. Air quality, construction noise, stream water quality and ecology have been identified to be the key environmental issues during the construction phase of the project.
- 3.02 A summary of the EM&A requirements for air quality, construction noise, stream water quality and ecology monitoring are shown in **Table 3-1**. The designated station of the air quality, construction noise, stream water quality locations and ecology monitoring area are shown in **Appendix D**.

**Table 3-1 Summary of EM&A Requirements**

Environmental Aspect	Monitoring Parameters	Monitoring Stations	
Air Quality	1-Hour and 24-Hour TSP	A10	
Construction Noise	Leq <sub>(30min)</sub> during normal working hours	N10a*	
	Supplementary data of L <sub>10</sub> and L <sub>90</sub> for reference.		
Stream Water Quality	In Situ Measurement	W9A & W9B	
			<ul style="list-style-type: none"> <li>• Dissolved Oxygen Concentration (mg/L);</li> <li>• Dissolved Oxygen Saturation (% Sat);</li> <li>• Turbidity (NTU);</li> <li>• pH;</li> <li>• Salinity (%); Water Depth (m) and</li> <li>• Temperature (°C).</li> </ul>
			Laboratory Analysis
Ecology	Monthly monitoring of construction activities adjacent to the wetland areas to identify any intrusions of construction activities into the wetland areas; Monthly monitoring of wetland areas themselves to check that there is no adverse impact on the wetlands as a consequence of changes to the water table that are attributable to the project, if any; Photographic records at six-month intervals; and Monthly surveys of fauna in the wetland areas during the wet season (April to July inclusive) for reptiles, amphibians, dragonflies, and butterflies, and throughout the year for birds.		

Note: \* The noise ambient condition within the victim area without significant change. Due to the accessibility, noise monitoring will undertake at N10a. Once the access is available, the impact noise monitoring will undertake at N10.

- 3.03 Air monitoring is carried out once every six days for 24-Hour TSP and 3 times every six days for 1-Hour TSP at one designated monitoring station A10.
- 3.04 Noise monitoring is conducted once per week at one designated monitoring location (N10a). Measurements of Leq<sub>(30min)</sub> shall be taken between 0700 and 1900 with supplementary L<sub>10</sub> and L<sub>90</sub> data will be collected for reference.
- 3.05 Stream water quality monitoring is conducted were undertaken at two location W9A & W9B twice per week. Dissolved Oxygen (DO), pH, Turbidity (NTU) were measured in-situ, water depth, temperature and salinity will be collected for relevant data. Suspended Solids (SS), Ammonia Nitrogen and Zinc were determined in a HOKLAS accredited laboratory respectively.
- 3.06 Ecological monitoring is conducted in the seasonal wetland area as shown in Project profile of KT15 Figure ATT 4-7.2). Bird survey should be conducted in monthly and other faunal groups (reptiles, amphibians, dragonflies and butterflies) are conducted in wet season (April to July inclusive).



3.07 A summary of the Action/Limit (A/L) Levels for air quality, construction noise, stream water quality and ecology are shown in Tables 3-2, 3-3, 3-4 and 3-5.

**Table 3-2 Action and Limit Levels for Air Quality Monitoring**

Monitoring Station	Action Level ( $\mu\text{g}/\text{m}^3$ )		Limit Level ( $\mu\text{g}/\text{m}^3$ )	
	1-Hour TSP	24-Hour TSP	1-Hour TSP	24-Hour TSP
A10	> 307	> 165	> 500	> 260

**Table 3-3 Action and Limit Levels for Construction Noise Monitoring**

Time Period	Action Level in dB(A)	Limit Level in dB(A)
0700-1900 hrs on normal weekdays	When one or more documented complaints are received	> 75* dB(A)

Note: \* Reduces to 70dB(A) for schools and 65dB(A) during the school examination periods.

**Table 3-4 Action and Limit Levels for Stream Water Quality Monitoring**

Dissolved Oxygen (mg/l)	W9A (Upstream) <sup>#</sup>	W9B (Downstream)
Action Level	NA	0.3
Limit Level	NA	0.2
<b>Turbidity (NTU)</b>		
Action Level	NA	73.5*
Limit Level	NA	78.2**
<b>pH</b>		
Action Level	NA	7.0*
Limit Level	NA	7.1**
<b>Suspended Solids (mg/L)</b>		
Action Level	NA	148*
Limit Level	NA	159**
<b>Ammonia Nitrogen (mg/L)</b>		
Action Level	NA	30.91*
Limit Level	NA	32.20**
<b>Zinc (<math>\mu\text{g}/\text{L}</math>)</b>		
Action Level	NA	242*
Limit Level	NA	252**

Notes: <sup>#</sup> Act as Control Station for the Impact Water Quality Monitoring.

\* Alternative Action Level of the Turbidity, pH, Suspended Solid, Ammonia Nitrogen and Zinc are 120% of upstream control station of same day.

\*\* Alternative Limit Level of the Turbidity, pH, Suspended Solid, Ammonia Nitrogen and Zinc are 130% of upstream control station of same day.

**Table 3-5 Action and Limit Levels for Ecology Monitoring**

Parameters	Action Level	Limit Level
Bird: decrease in the total number of wetland dependent bird species or individuals of the wetland dependent bird species from baseline	20 – 40% of 1.2 individuals and 3 species	> 40% of 1.2 individuals and 3 species

**4.0 IMPACT MONITORING METHDOLOGY****MONITORING LOCATIONS**

- 4.01 The 1-Hour TSP and 24-Hour TSP monitoring was carried out at one designated station A10. Impact construction noise monitoring was undertaken at the designated location N10a. Stream water quality monitoring was undertaken at two designated locations (W9A & W9B). The ecology monitoring was conducted within the wetland area in according to the EM&A Manual of KT15. The descriptions of monitoring stations are presented in **Tables 4-1**. The geographically location are shown in **Appendix D**.

**Table 4-1 Air Quality, Noise & Stream Water Quality Monitoring Station/Locations**

<b>Air Quality Station</b>	
A10	Village House in Tin Sam San Tsuen
<b>Construction Noise Location</b>	
N10*	Village House in Tin Sam San Tsuen
N10a	Village House in Tin Sam San Tsuen
<b>Water Quality Locations</b>	
W9A <sup>#</sup>	Tin Sam San Tsuen
W9B	Tin Sam San Tsuen

Note: \* The noise ambient condition within the victim area without significant change. Due to the accessibility, noise monitoring will undertake at N10a. Once the access is available, the impact noise monitoring will undertake at N10

# Act as control station in impact monitoring

- 4.02 The meteorological data during the reporting quarter were obtained from the Lau Fau Shan Station of the Hong Kong Observatory (HKO).

**MONITORING FREQUENCY AND PERIOD****1-HOUR TSP MONITORING**

- 4.03 The 1-Hour TSP monitoring was conducted in designated station A10 in according to the EM&A Manual three times every 6 days. Total of 36 monitoring events were carried out in this reporting quarter.

**24-HOUR TSP MONITORING**

- 4.04 The 24-Hour TSP monitoring was conducted at station A10 once every six days. Total of 12 monitoring events were carried out in this reporting quarter.

**NOISE MONITORING**

- 4.05 Impact noise monitoring was undertaken at one location N10a once per week. Total of 12 monitoring events were carried out in this reporting quarter.

**STREAM WATER QUALITY MONITORING**

- 4.06 The stream water quality monitoring were undertaken at two locations W9A & W9B two time per week. Total of 38 monitoring events were carried out in this reporting quarter.

### **ECOLOGY MONITORING**

- 4.07 Bird survey should be conducted in monthly and other faunal groups (reptiles, amphibians, dragonflies and butterflies) are conducted in wet season (April to July inclusive) in the seasonal wetland area.

## **5.0 IMPACT MONITORING IN THIS REPORTING QUARTER**

- 5.01 The impact EM&A program was carried out by the ET in compliance with the project specific EM&A Manual in this reporting quarter. The impact monitoring schedules were presented in pervious Monthly EM&A Reports (July 2007, August 2007 and September 2007). All the impact monitoring were undertaken in according to the monitoring schedule. Details monitoring results are present in the pervious Monthly EM&A Reports (July 2007, August 2007 and September 2007).

### **AIR QUALITY**

- 5.02 No 1-Hour/24-Hour TSP Action or Limit Level exceedance was recorded in this reporting quarter. Details of the impact air quality monitoring data were present in the pervious Monthly EM&A Reports (July 2007, August 2007 and September 2007). Graphical plots of the 1-Hour and 24-Hour TSP monitoring results are shown in **Appendix E**.
- 5.03 The meteorological data of this reporting quarter are summarized in **Appendix F**.

### **CONSTRUCTION NOISE**

- 5.04 No construction noise exceedance (Action/Limit Level) was recorded in this reporting quarter. Details of the impact noise monitoring data were present in the pervious Monthly EM&A Reports (July 2007, August 2007 and September 2007). Graphical plots of the monitoring data are presented in **Appendix E**.

### **STREAM WATER QUALITY**

- 5.05 No stream water quality exceedance was recorded in this reporting quarter. Details of the monitoring results were present in the pervious Monthly EM&A Reports (July 2007, August 2007 and September 2007) and graphical plots for each parameter are presented in **Appendix E**.

### **ECOLOGY**

- 5.06 Exceedances in ecology were recorded in this reporting quarter. Details of the monitoring results were presented in the pervious Monthly EM&A Reports (July 2007, August 2007 and September 2007) and a summary of the exceedances is presented in **Table 5-1** below.
- 5.07 Fauna survey is conducted during the wetland season (April to July), and thus are not required in the August and September monitoring. Exceedances of Limit Level at wetland birds were found in August and September monitoring. As the major construction works for the project was not commenced when those monitoring surveys were conducted, the records of non-compliance were not considered to be caused by the project.

5.08 Photographic records are scheduled in six-month intervals and thus are not required in this reporting quarter. No intrusions into the wetland area, or adverse impact on the wetlands, was found during the reporting quarter.

5.09 Exceedances in Ecology during the reporting quarter are presented in the **Table 5-1**.

**Table 5-1 Summary of Exceedances in Ecology Impact Monitoring**

Month	Taxa	Parameters	Action Level	Limit Level	Exceedance
July 2007	Bird	Species no.	-	-	
		Individual no.	-	-	
	Fauna	Species no.	-	-	
		Individual no.	-	-	
August 2007	Bird	Species no.	-	Breach	Limit Level
		Individual no.	-	Breach	
September 2007	Bird	Species no.	-	Breach	Limit Level
		Individual no.	-	Breach	

## 6.0 WASTE MANAGEMENT

6.01 The waste management was implemented by on-site Environmental Officer or Environmental Supervisor from time to time.

### RECORDS OF WASTE QUANTITIES

6.02 All types of waste arising from the construction work are classified into the following:

- Construction & Demolition (C&D) Material;
- Chemical Waste; and
- General Refuse.

6.03 The quantities of waste for disposal in this reporting quarter were summarized in **Tables 6-1** and **6-2**. Whenever possible, materials were reused on-site as far as practicable.

**Table 6-1 Summary of Quantities of Inert C&D Materials**

Type of Waste	July 2007	August 2007	September 2007
Broken Concrete (Inert) (m <sup>3</sup> )	0	0	0
Reused in this Contract (Inert) (m <sup>3</sup> )	0	0	0
Reused in other Projects (Inert) (m <sup>3</sup> )	0	0	0
Disposal as Public Fill (Inert) (m <sup>3</sup> )	0	0	0.364

**Table 6-2 Summary of Quantities of C&D Wastes**

Type of Waste	July 2007	August 2007	September 2007
Recycled Metal (kg)	0	0	0.65
Recycled Paper/Cardboard Packing (kg)	0	0	0
Recycled Plastic (kg)	0	0	0
Chemical Wastes (kg)	0	0	0
General Refuses (kg)	0.0175	3.5	182

## 7.0 SITE INSPECTION

- 7.01 According to the EM&A Manual Section 9.1.2, the environmental site inspection should be formulation by ET Leader. Date of ET's environmental site inspection and monthly audit conducted by IEC were summaries in the **Table 7-1**.

**Table 7-1 Date of Environmental Weekly Site Inspection and Monthly Audit**

Date	Involved Parties
20 July 2007	ER, CCC and ET
25 July 2007*	ER, IEC, CCC and ET
02 August 2007	ER, CCC and ET
09 August 2007	ER, CCC and ET
16 August 2007	ER, CCC and ET
21 August 2007*	ER, IEC, CCC and ET
29 August 2007	ER, CCC and ET
06 September 2007	ER, CCC and ET
12 September 2007*	ER, IEC, CCC and ET
21 September 2007	ER, CCC and ET

Note: \*Monthly IEC site audit.

- 7.02 No non-compliance and nine observations were recorded in this reporting quarter. The ET site inspection checklists and IEC monthly audit checklists were present in the pervious Monthly EM&A Reports (July 2007, August 2007 & September 2007).

## 8.0 ENVIRONMENTAL COMPLAINT AND NON-COMPLIANCE

### ENVIRONMENTAL COMPLAINT, SUMMONS AND PROSECUTION

- 8.01 No environmental complaint, summons and prosecution was received in this reporting quarter. The statistical summary table of environmental complaint is presented in **Table 8-1, 8-2 and 8-3**.

**Table 8-1 Statistical Summary of Environmental Complaints**

Reporting Period	Environmental Complaints Statistics		
	Frequency	Cumulative	Complaint Nature
20 – 25 Jul 2007	0	0	NA
26 Jul – 25 Aug 2007	0	0	NA
26 Aug – 25 Sep 2007	0	0	NA

**Table 8-2 Statistical Summary of Environmental Summons**

Reporting Period	Environmental Summons Statistics		
	Frequency	Cumulative	Nature
20 – 25 July 2007	0	0	NA
26 Jul – 25 Aug 2007	0	0	NA
26 Aug – 25 Sep 2007	0	0	NA

**Table 8-3 Statistical Summary of Environmental Prosecution**

Reporting Period	Environmental Prosecution Statistics		
	Frequency	Cumulative	Nature
20 – 25 July 2007	0	0	NA
26 Jul – 25 Aug 2007	0	0	NA
26 Aug – 25 Sep 2007	0	0	NA

## 9.0 IMPLEMENTATION STATUS OF MITIGATION MEASURES

9.01 CCC has been implementing the required environmental mitigation measures according to the EM&A Manual of KT15 - Mitigation Measures Implementation Schedule.

9.02 A summary of environmental mitigation measures generally implemented by CCC in this reporting period is presented as follows;

### Water Quality

- Wastewater were appropriately treated by treatment facilities;
- Drainage channels were provided to convey run-off into the treatment facilities;
- Drainage systems were regularly and adequately maintained.

### Air Quality

- Vehicles were cleaned of mud and debris before leaving the site;
- Site vehicles were limited to within 8 km/hr;
- Public roads around the site entrance/exit had been kept clean and free from dust;
- Dust suppression measures were properly provided to reduce dust emission from stockpile.

### Noise

- Works and equipment were located to minimise noise nuisance from the nearest sensitive receiver;
- Idle equipments were either turned off or throttled down;
- Some of the Powered Mechanical Equipments were covered or shielded by appropriate acoustic materials if practicable.

### Waste and Chemical Management

- Wastes were properly segregated into inert and non-inert in appropriate containers/areas;
- Excavated materials were reused where practicable.
- A chemical waste storage area had been provided on site;

### General

- The site was generally kept tidy and clean.

## 10.0 CONCLUSION

10.01 The EM&A program in this reporting quarter (July 2007 – September 2007) was undertaken in compliance with the EM&A Manual for KT15. A summary of environmental compliance of air, noise, stream water quality and ecology in this reporting quarter are presented in **Table 10-1**.

**Table 10-1 Summary of the Exceedances for Impact Monitoring**

Env. Quality	Parameters	Work-Related Exceedance %	Investigation & Corrective Actions
Air Quality	1-Hour TSP	0	Not Required for 0% Exceedance
	24-Hour TSP	0	Not Required for 0% Exceedance
Noise	Leq (30min) Daytime	0	Not Required for 0% Exceedance
Stream Water	DO in mg/L	0	Not Required for 0% Exceedance
	SS in mg/L	0	Not Required for 0% Exceedance
	Turbidity (NTU)	0	Not Required for 0% Exceedance
	pH	0	Not Required for 0% Exceedance
	Ammonia Nitrogen (mg/L)	0	Not Required for 0% Exceedance
	Zinc (µg/L)	0	Not Required for 0% Exceedance
Ecology	Decrease in the total number of wetland dependent species or individuals of the surveyed faunal groups from baseline	0	Not Required for 0% Exceedance

- 10.02 No 1-Hour and 24-Hour TSP exceeded the Action/Limit Level was recorded in this reporting quarter.
- 10.03 All measured daytime construction noise levels were below the Limit level and no complaint was received in this reporting quarter.
- 10.04 No stream water quality exceeded the Action/Limit Level was recorded during the reporting quarter.
- 10.05 No exceedance on the parameters for Ecology due to the project, nor intrusions into the wetland area/adverse impact on the wetlands, was found during the reporting quarter.
- 10.06 No environmental complaint, summons or prosecution was received in this reporting quarter.

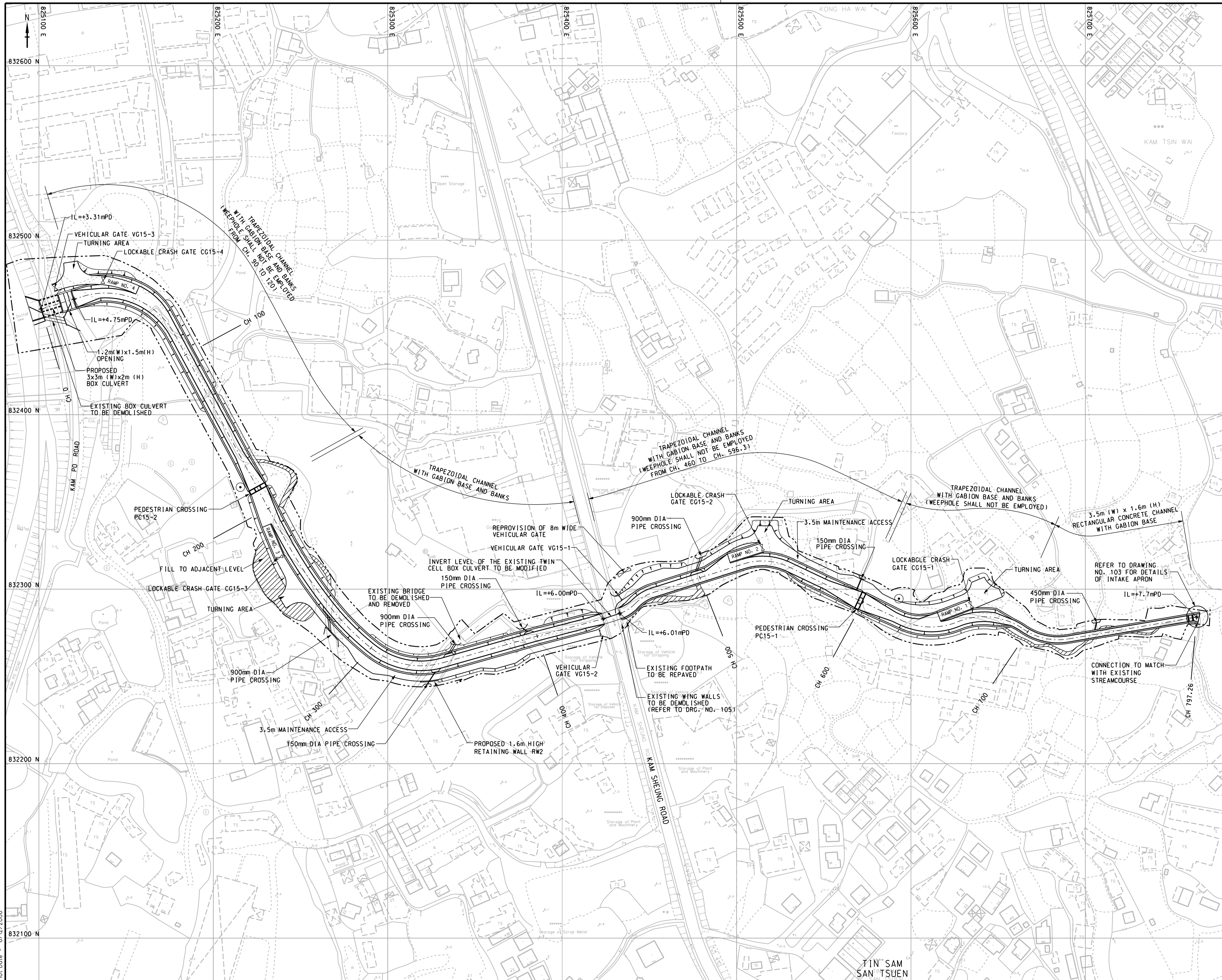
### RECOMMENDATIONS

- 10.07 Based on the ET regular site inspection and IEC monthly audit in this reporting quarter (July 2007 – September 2007), no non-compliance and nine observations were recorded. Details of the observations can refer to the previous Monthly EM&A report (July 2007, August 2007 and September 2007). In general, the environmental performance of proposed channel KT15 was accepted.
- 10.08 The ET will continue to implement the EM&A program and audit the implementation of the environmental mitigation measures.

## **Appendix A**

### **Project Site Layout**





© Copyright by Black & Veatch Hong Kong Limited and Government of HKSAR

NOTES :  
1. REFER TO DRAWING NO. 020 FOR NOTES AND LEGENDS.

Revision	Date	Description			Initial
		Designed	Checked	Drawn	
		SFL	KIL	MK	KIL
Date	12/05	12/05	12/05	12/05	12/05

Approved

CONTRACT NO. DG200602

Contract title  
YUEN LONG, KAM TIN, NGAU TAM MEI AND TIN SHUI WAI DRAINAGE IMPROVEMENTS, STAGE 1, PHASE 2B - CHEUNG CHUN SAN TSUEN AND KAM TSIN WAI

Drawing title  
CHANNEL KT15 GENERAL LAYOUT PLAN

Drawing no.	Scale
021	1:1000 A1 1:2000 A3

香港特別行政區政府渠務署  
THE GOVERNMENT OF THE HONG KONG SPECIAL ADMINISTRATIVE REGION  
DRAINAGE SERVICES DEPARTMENT

BLACK & VEATCH HONG KONG LIMITED  
博威工程顧問有限公司

Plot Date : 6/12/2005

## **Appendix B**

### **Three-Month Construction Program**

ID	Task Name	Duration	Start	Finish	Aug	Sep	Oct	Nov	Dec
1	Letter of Acceptance	1 day	'07 Mar 21	'07 Mar 21					
2	Date for commencement of Works	1 day	'07 Mar 30	'07 Mar 30					
3	Execution of Article of Agreement	1 day	'07 Apr 3	'07 Apr 3					
4									
5	<b>Master Programme of the Works</b>	<b>839 days</b>	<b>'07 Mar 21</b>	<b>'09 Jul 6</b>					
6									
7	<b>Completion Dates</b>	<b>830 days</b>	<b>'07 Mar 30</b>	<b>'09 Jul 6</b>					
8	Section I - portions 1, 2 and 3	830 days	'07 Mar 30	'09 Jul 6					
9	Section II - portions 4, 5 and 5C	830 days	'07 Mar 30	'09 Jul 6					
10	Section III - portions 5A1, 5A2 and 5B	740 days	'07 Jun 28	'09 Jul 6					
11	Section IV - temp vehicular access at portion 5A1	90 days	'07 Jun 28	'07 Sep 25			9/25		
12	Section V - preservation and protection of existing trees	830 days	'07 Mar 30	'09 Jul 6					
13									
14	<b>Possession of Site</b>	<b>240 days</b>	<b>'07 Mar 30</b>	<b>'07 Nov 24</b>					
15	Portion 1 - channel KT2	1 day	'07 Mar 30	'07 Mar 30					
16	Portion 2 - channel KT2	61 days	'07 Mar 30	'07 May 29					
17	Portion 3 - channel KT2	91 days	'07 Mar 30	'07 Jun 28					
18	Portion 4 - channel KT15	1 day	'07 Mar 30	'07 Mar 30					
19	Portion 5 - channel KT15	91 days	'07 Mar 30	'07 Jun 28					
20	Portion 5A1 - channel KT15	91 days	'07 Mar 30	'07 Jun 28					
21	Portion 5A2 - channel KT15	91 days	'07 Mar 30	'07 Jun 28					
22	Portion 5B - channel KT15	60 days	'07 Sep 26	'07 Nov 24		9/26			
23	Portion 5C - channel KT15	91 days	'07 Mar 30	'07 Jun 28					
24	Portion 6 - Temp Storage Area at Chi Ho Road	1 day	'07 Mar 30	'07 Mar 30					
25	Portion 7 - Berthing Area	1 day	'07 Mar 30	'07 Mar 30					
26	Portion 8 - Site Accommodation	1 day	'07 Mar 30	'07 Mar 30					
27									
28	<b>A. Preliminary Works</b>	<b>839 days</b>	<b>'07 Mar 21</b>	<b>'09 Jul 6</b>					
29	1. Setting out of Works	830 days	'07 Mar 30	'09 Jul 6					
30	<b>2. Environmental Monitoring and Audit</b>	<b>830 days</b>	<b>'07 Mar 30</b>	<b>'09 Jul 6</b>					
31	2.1 Establishment of Environmental Team	14 days	'07 Mar 30	'07 Apr 12					
32	2.2 approval by the Engineer	7 days	'07 Apr 13	'07 Apr 19					
33	<b>2.3 Environmental baseline monitoring</b>	<b>77 days</b>	<b>'07 Apr 20</b>	<b>'07 Jul 5</b>					
34	a. Technical proposal & methodology	7 days	'07 Apr 20	'07 Apr 26					
35	b. Approval by the Engineer	7 days	'07 Apr 27	'07 May 3					
36	c. Baseline monitoring	63 days	'07 May 4	'07 Jul 5					
37	2.4 Environmental impact monitoring and audit	730 days	'07 Jul 8	'09 Jul 6					
38	<b>3. Environmental Management and Environmental Managi</b>	<b>73 days</b>	<b>'07 Mar 30</b>	<b>'07 Jun 10</b>					
39	3.1 Submission of draft EMP	21 days	'07 Mar 30	'07 Apr 19					
40	3.2 Comment from the Engineer	7 days	'07 Apr 20	'07 Apr 26					
41	3.3 Submission of EMP	45 days	'07 Apr 27	'07 Jun 10					
42	<b>4. Engineer's Accommodation</b>	<b>51 days</b>	<b>'07 Mar 30</b>	<b>'07 May 19</b>					
43	<b>4.1 Renovation</b>	<b>30 days</b>	<b>'07 Mar 30</b>	<b>'07 Apr 28</b>					
44	<b>4.2 Equipment</b>	<b>51 days</b>	<b>'07 Mar 30</b>	<b>'07 May 19</b>					
45	a. Contract telephone	21 days	'07 Mar 30	'07 Apr 19					
46	b. Survey equipment	45 days	'07 Mar 30	'07 May 13					
47	c. Contract computer facilities	<b>51 days</b>	<b>'07 Mar 30</b>	<b>'07 May 19</b>					
48	submission	14 days	'07 Mar 30	'07 Apr 12					
49	approval	7 days	'07 Apr 13	'07 Apr 19					
50	installation	21 days	'07 Apr 22	'07 May 12					
51	testing & commissioning	7 days	'07 May 13	'07 May 19					
52	<b>4.3 utilities servicing</b>	<b>33 days</b>	<b>'07 Mar 30</b>	<b>'07 May 1</b>					
53	a. Water	1 day	'07 Mar 30	'07 Mar 30					
54	b. Electricity	1 day	'07 Mar 30	'07 Mar 30					
55	c. Telephone	<b>33 days</b>	<b>'07 Mar 30</b>	<b>'07 May 1</b>					
56	temporary service	32 days	'07 Mar 30	'07 Apr 30					
57	new service	<b>19 days</b>	<b>'07 Apr 13</b>	<b>'07 May 1</b>					
58	application	5 days	'07 Apr 13	'07 Apr 17					
59	installation	14 days	'07 Apr 18	'07 May 1					
60	d. Facsimile	<b>33 days</b>	<b>'07 Mar 30</b>	<b>'07 May 1</b>					
61	temporary service	32 days	'07 Mar 30	'07 Apr 30					
62	new service	<b>19 days</b>	<b>'07 Apr 13</b>	<b>'07 May 1</b>					
63	application	5 days	'07 Apr 13	'07 Apr 17					
64	installation	14 days	'07 Apr 18	'07 May 1					
65	e. Internet broadband	<b>33 days</b>	<b>'07 Mar 30</b>	<b>'07 May 1</b>					
66	temporary service (56K)	32 days	'07 Mar 30	'07 Apr 30					
67	new service	<b>19 days</b>	<b>'07 Apr 13</b>	<b>'07 May 1</b>					
68	application	5 days	'07 Apr 13	'07 Apr 17					

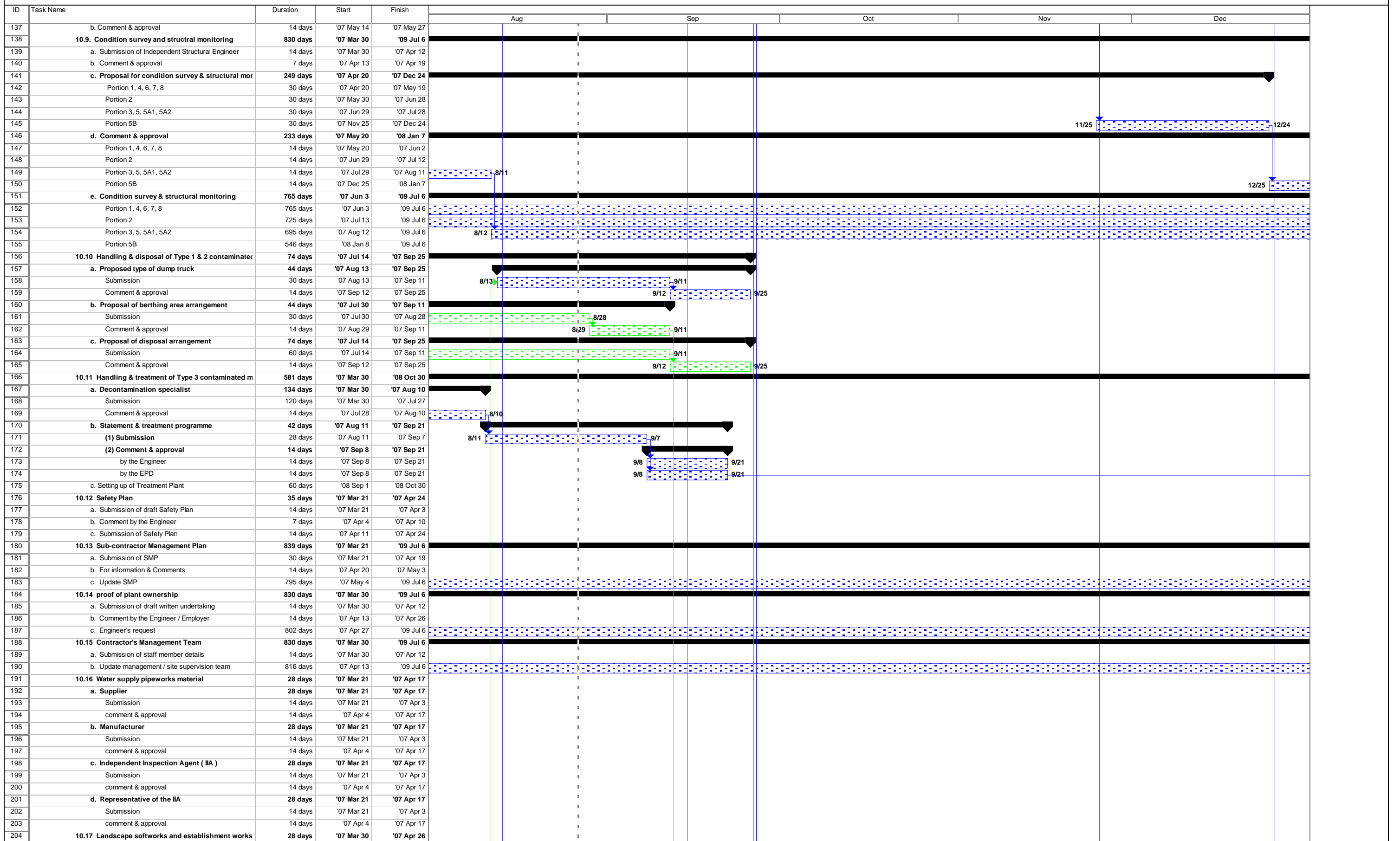
PROGRAMME OF WORKS - MP02

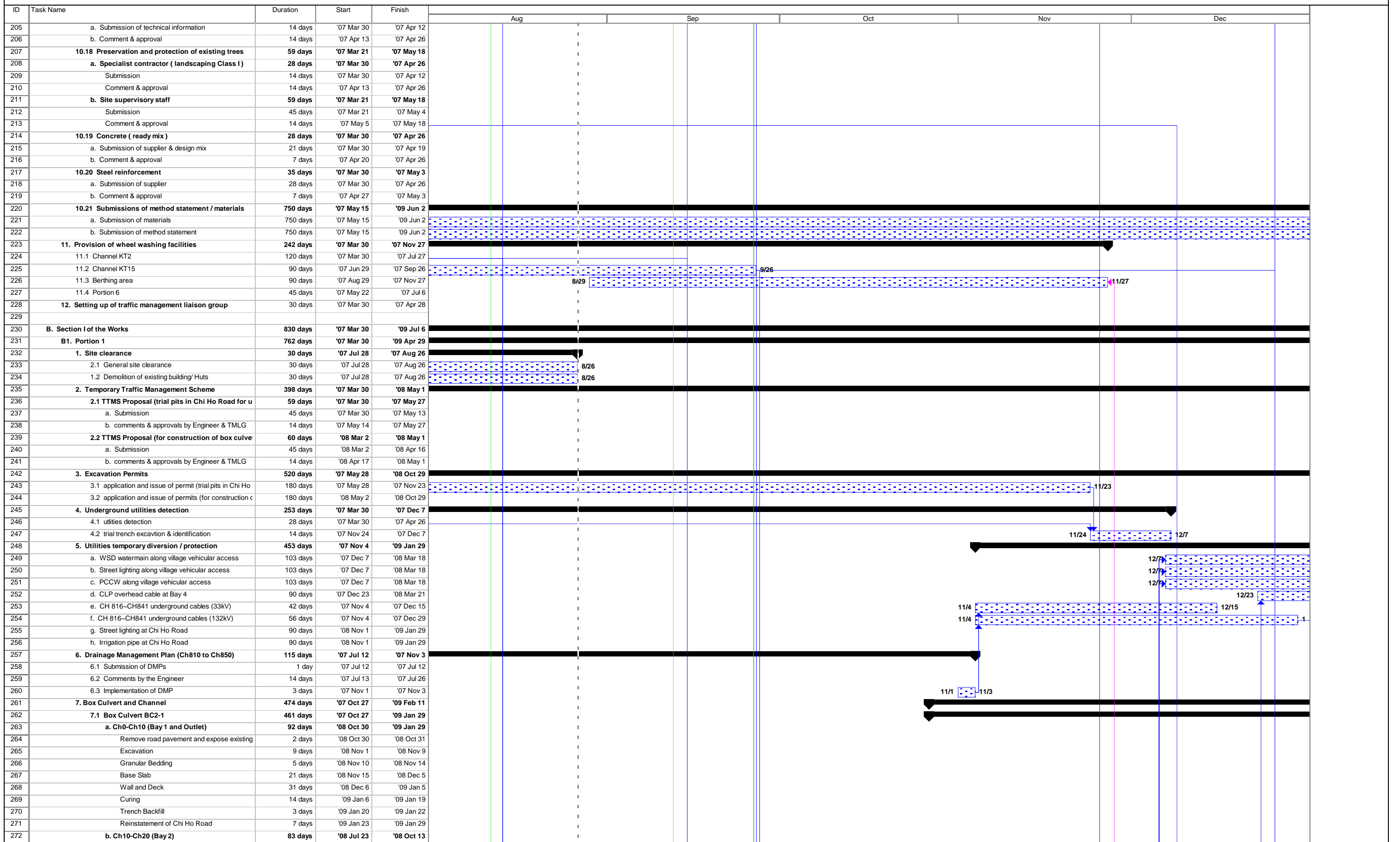
Contract No. : DC / 2006 / 02

Contract Title : Yuen Long, Kam Tin, Ngau Tam Mei and Tin Shui Wai Drainage Improvements,  
Stage 1, Phase 2B - Cheung Chun San Tsuen and Kam Tsui Wai

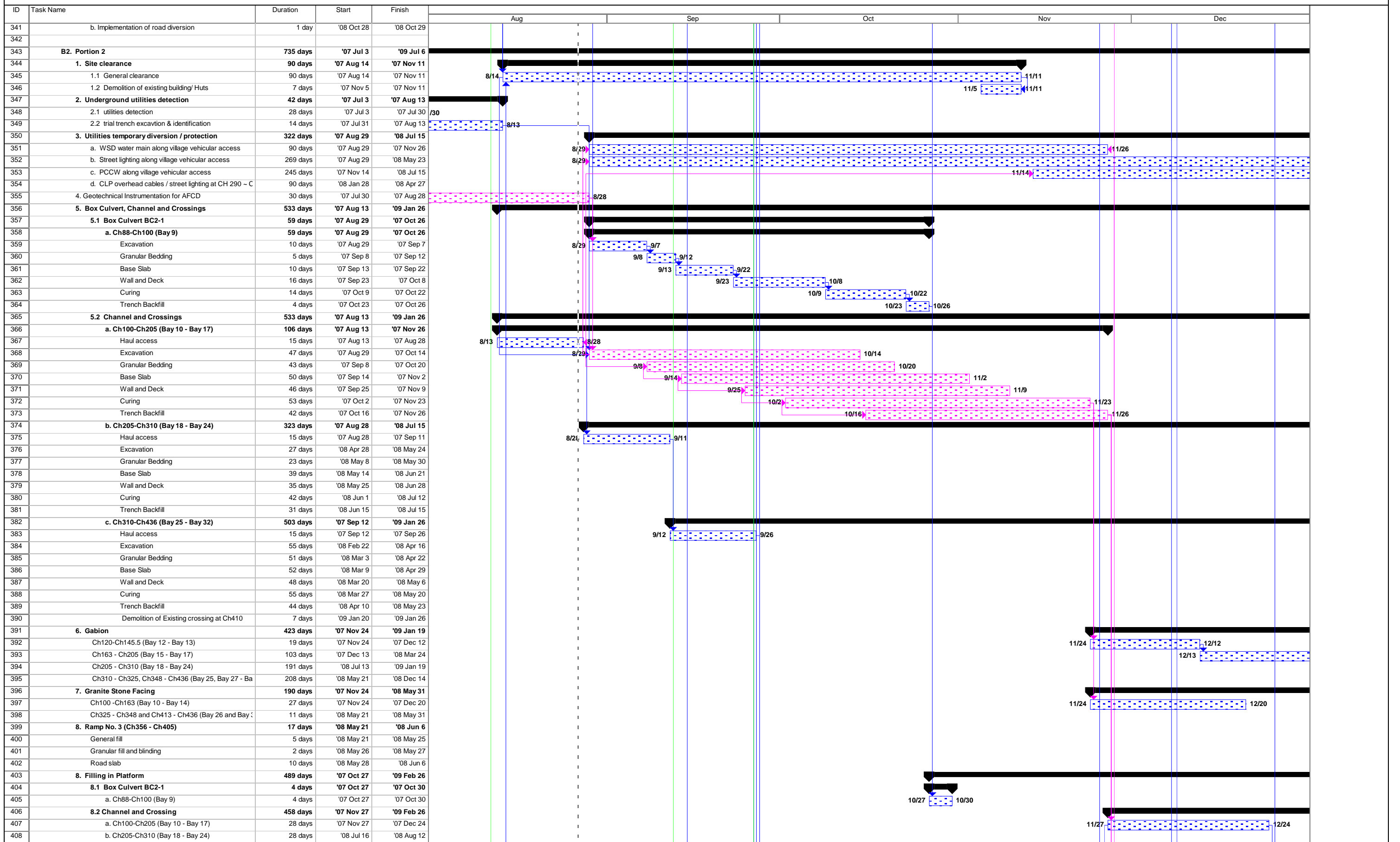
ID	Task Name	Duration	Start	Finish	Aug	Sep	Oct	Nov	Dec
69	installation	14 days	'07 Apr 18	'07 May 1					
70	<b>5. Contractor's Accommodation</b>	<b>45 days</b>	<b>'07 Mar 30</b>	<b>'07 May 13</b>					
71	<b>5.1 Provision</b>	<b>45 days</b>	<b>'07 Mar 30</b>	<b>'07 May 13</b>					
72	a. Premises	45 days	'07 Mar 30	'07 May 13					
73	b. Toilet facilities	21 days	'07 Apr 23	'07 May 13					
74	c. Telephone service	30 days	'07 Apr 14	'07 May 13					
75	d. Facsimile service	30 days	'07 Apr 14	'07 May 13					
76	e. Internet broadband service	30 days	'07 Apr 14	'07 May 13					
77	f. Water	1 day	'07 Mar 30	'07 Mar 30					
78	g. electricity	1 day	'07 Mar 30	'07 Mar 30					
79	<b>6. Transport (land ) for the Engineer</b>	<b>124 days</b>	<b>'07 Mar 30</b>	<b>'07 Jul 31</b>					
80	6.1 submission	7 days	'07 Mar 30	'07 Apr 5					
81	6.2 comment & approval	14 days	'07 Apr 6	'07 Apr 19					
82	6.3 delivery	103 days	'07 Apr 20	'07 Jul 31					
83	6.4 temp service	124 days	'07 Mar 30	'07 Jul 31					
84	<b>7. Transport (land) for Public Works Regional Laboratory</b>	<b>124 days</b>	<b>'07 Mar 30</b>	<b>'07 Jul 31</b>					
85	7.1 submission	7 days	'07 Mar 30	'07 Apr 5					
86	7.2 comment, approval & instruction	14 days	'07 Apr 6	'07 Apr 19					
87	7.3 delivery	103 days	'07 Apr 20	'07 Jul 31					
88	<b>8. Signboard</b>	<b>150 days</b>	<b>'07 Mar 30</b>	<b>'07 Aug 26</b>					
89	<b>8.1 Major</b>	<b>150 days</b>	<b>'07 Mar 30</b>	<b>'07 Aug 26</b>					
90	submission	90 days	'07 Mar 30	'07 Jun 27					
91	comment & approval	90 days	'07 Apr 29	'07 Jul 27					
92	erection	90 days	'07 May 29	'07 Aug 26					
93	<b>8.2 Minor</b>	<b>150 days</b>	<b>'07 Mar 30</b>	<b>'07 Aug 26</b>					
94	submission	90 days	'07 Mar 30	'07 Jun 27					
95	comment & approval	90 days	'07 Apr 29	'07 Jul 27					
96	erection	90 days	'07 May 29	'07 Aug 26					
97	<b>9. Telephone hotline</b>	<b>15 days</b>	<b>'07 Apr 29</b>	<b>'07 May 13</b>					
98	9.1 Engineer's instruction	1 day	'07 Apr 29	'07 Apr 30					
99	9.2 installation	14 days	'07 Apr 30	'07 May 13					
100	<b>10. Contractual general submissions</b>	<b>839 days</b>	<b>'07 Mar 21</b>	<b>'09 Jul 6</b>					
101	<b>10.1 programmes</b>	<b>28 days</b>	<b>'07 Mar 21</b>	<b>'07 Apr 17</b>					
102	a. GCC Clause 16 programme	14 days	'07 Mar 21	'07 Apr 3					
103	b. Works programme & financial programme	14 days	'07 Apr 4	'07 Apr 17					
104	c. 3-month rolling programme	14 days	'07 Apr 4	'07 Apr 17					
105	<b>10.2 contractor's superintendence</b>	<b>14 days</b>	<b>'07 Mar 30</b>	<b>'07 Apr 12</b>					
106	a. Agent	7 days	'07 Mar 30	'07 Apr 5					
107	b. Surveyor	14 days	'07 Mar 30	'07 Apr 12					
108	c. Sub-agent	14 days	'07 Mar 30	'07 Apr 12					
109	d. Geotechnical Engineer	7 days	'07 Mar 30	'07 Apr 5					
110	e. Geotechnical Supervisor	14 days	'07 Mar 30	'07 Apr 12					
111	f. Foreman - concrete	14 days	'07 Mar 30	'07 Apr 12					
112	g. Foreman - drainage	14 days	'07 Mar 30	'07 Apr 12					
113	h. Staff Organization Plan	14 days	'07 Mar 30	'07 Apr 12					
114	<b>10.3 Safety Organization</b>	<b>14 days</b>	<b>'07 Mar 30</b>	<b>'07 Apr 12</b>					
115	a. Safety Officer	14 days	'07 Mar 30	'07 Apr 12					
116	b. Safety Supervisor	14 days	'07 Mar 30	'07 Apr 12					
117	c. Safety Representative	14 days	'07 Mar 30	'07 Apr 12					
118	<b>10.4 TTMS design</b>	<b>7 days</b>	<b>'07 Mar 30</b>	<b>'07 Apr 5</b>					
119	a. Independent Traffic Consultant	7 days	'07 Mar 30	'07 Apr 5					
120	b. Traffic Engineer	7 days	'07 Mar 30	'07 Apr 5					
121	<b>10.5 Assistant to Engineer</b>	<b>33 days</b>	<b>'07 Mar 30</b>	<b>'07 May 1</b>					
122	a. Chainmen (4)	33 days	'07 Mar 30	'07 May 1					
123	b. Watchmen (2)	33 days	'07 Mar 30	'07 May 1					
124	c. Field assistant (1)	33 days	'07 Mar 30	'07 May 1					
125	d. Technical assistant (1)	33 days	'07 Mar 30	'07 May 1					
126	e. Clerical assistant (1)	33 days	'07 Mar 30	'07 May 1					
127	f. Office assistant (1)	33 days	'07 Mar 30	'07 May 1					
128	<b>10.6 Underground service detection equipment</b>	<b>35 days</b>	<b>'07 Mar 30</b>	<b>'07 May 3</b>					
129	a. Submission	7 days	'07 Mar 30	'07 Apr 5					
130	b. Comment & approval	14 days	'07 Apr 6	'07 Apr 19					
131	c. Provision	14 days	'07 Apr 20	'07 May 3					
132	<b>10.7 Independent Checking of Temporary Works</b>	<b>28 days</b>	<b>'07 Mar 30</b>	<b>'07 Apr 26</b>					
133	a. Submission of independent checking engineer	14 days	'07 Mar 30	'07 Apr 12					
134	b. Comment & approval	14 days	'07 Apr 13	'07 Apr 26					
135	<b>10.8 Trip ticket system for C &amp; D material</b>	<b>59 days</b>	<b>'07 Mar 30</b>	<b>'07 May 27</b>					
136	a. Submission of site management plan	45 days	'07 Mar 30	'07 May 13					

Task		Progress		Summary		Rolled Up Critical Task		Rolled Up Progress		External Tasks		Group By Summary	
Critical Task		Milestone		Rolled Up Task		Rolled Up Milestone		Split		Project Summary		Deadline	

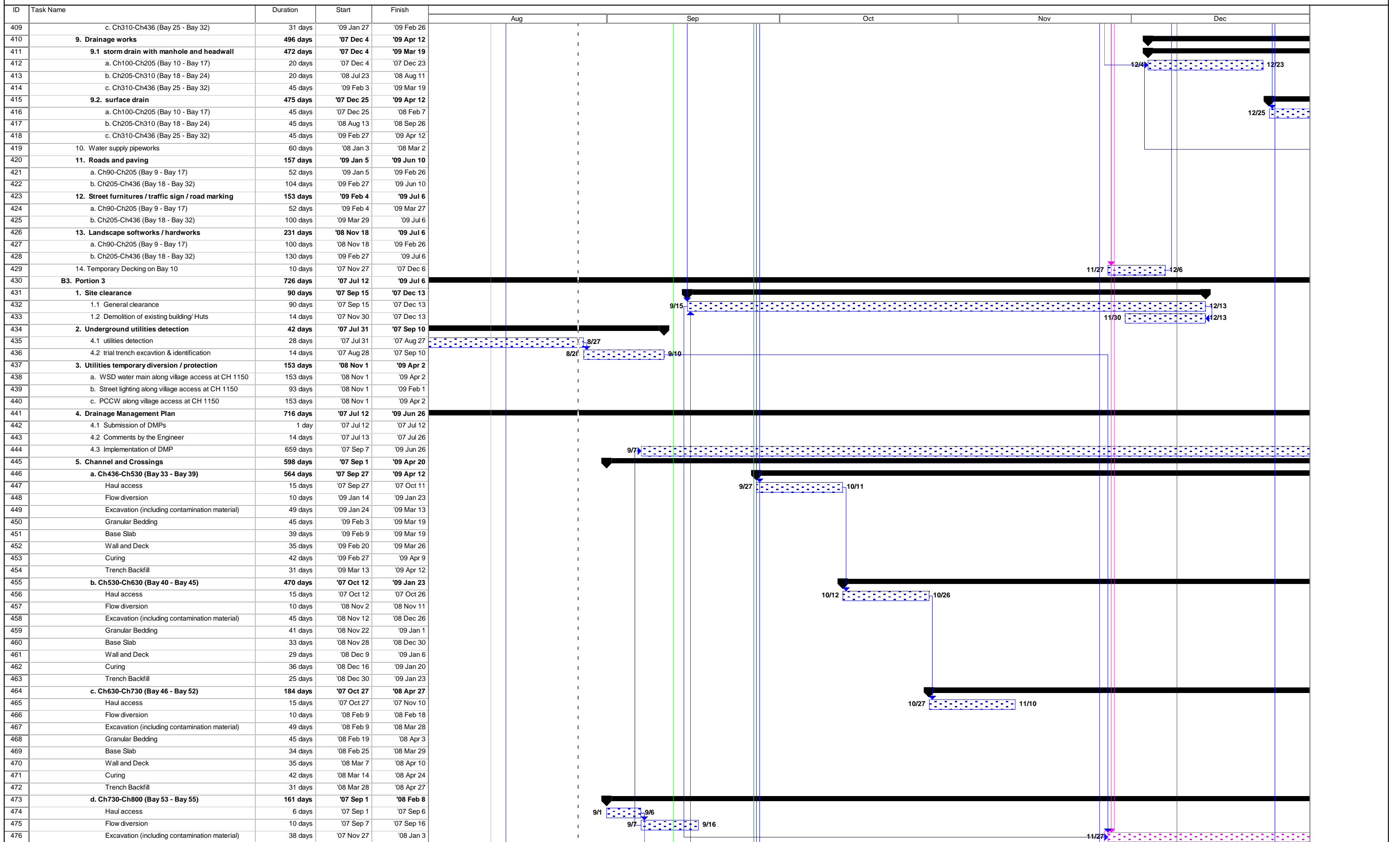


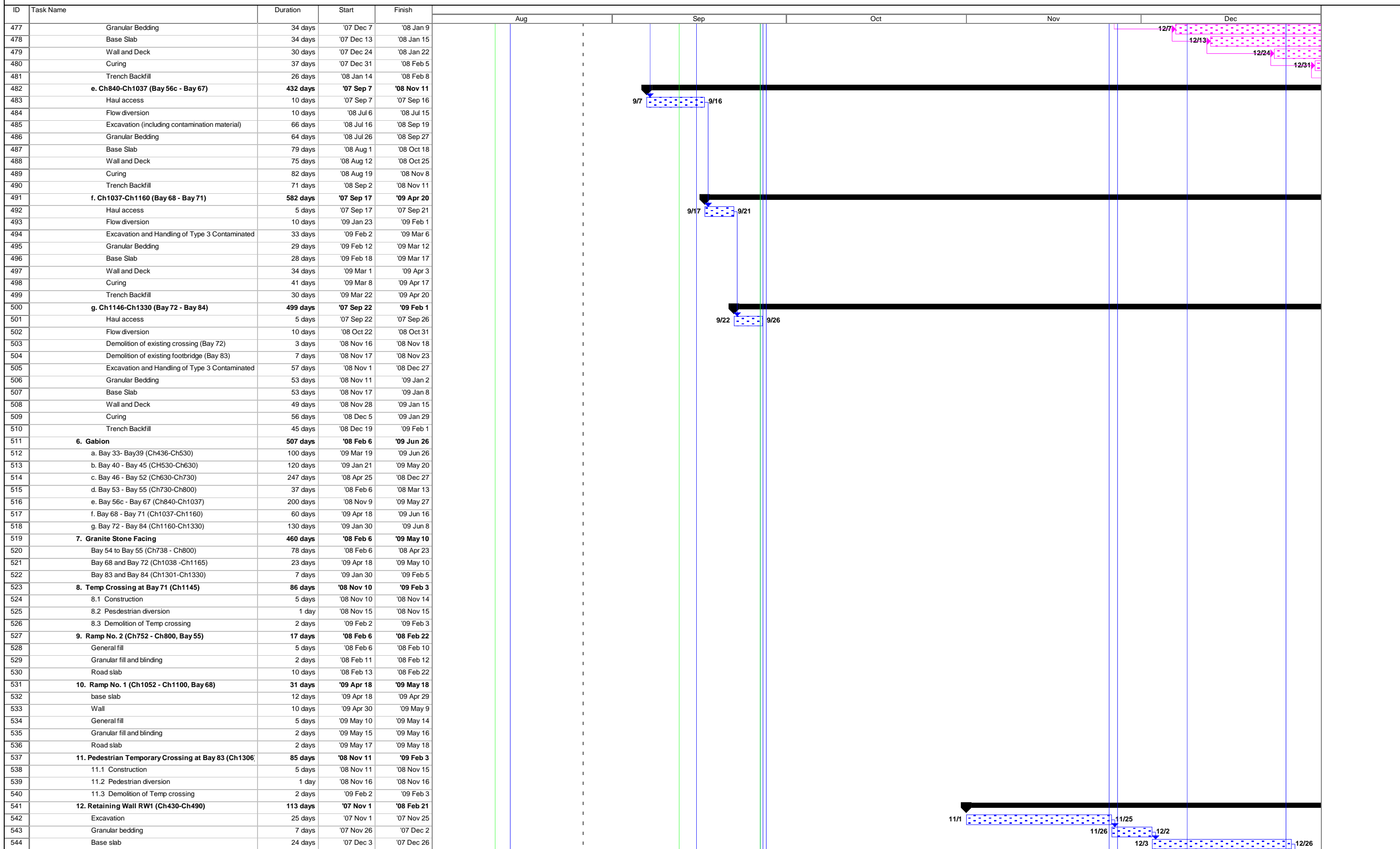




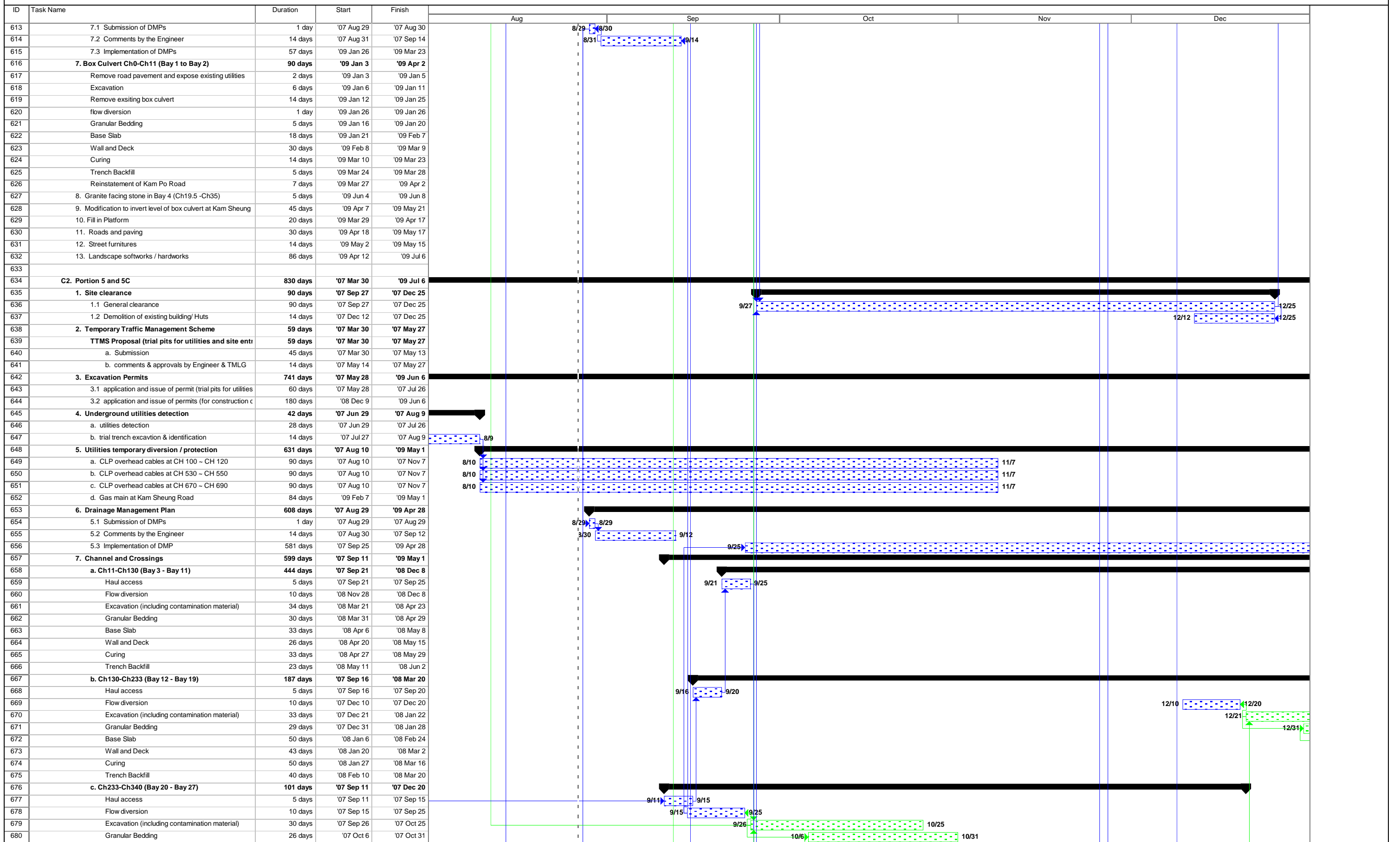


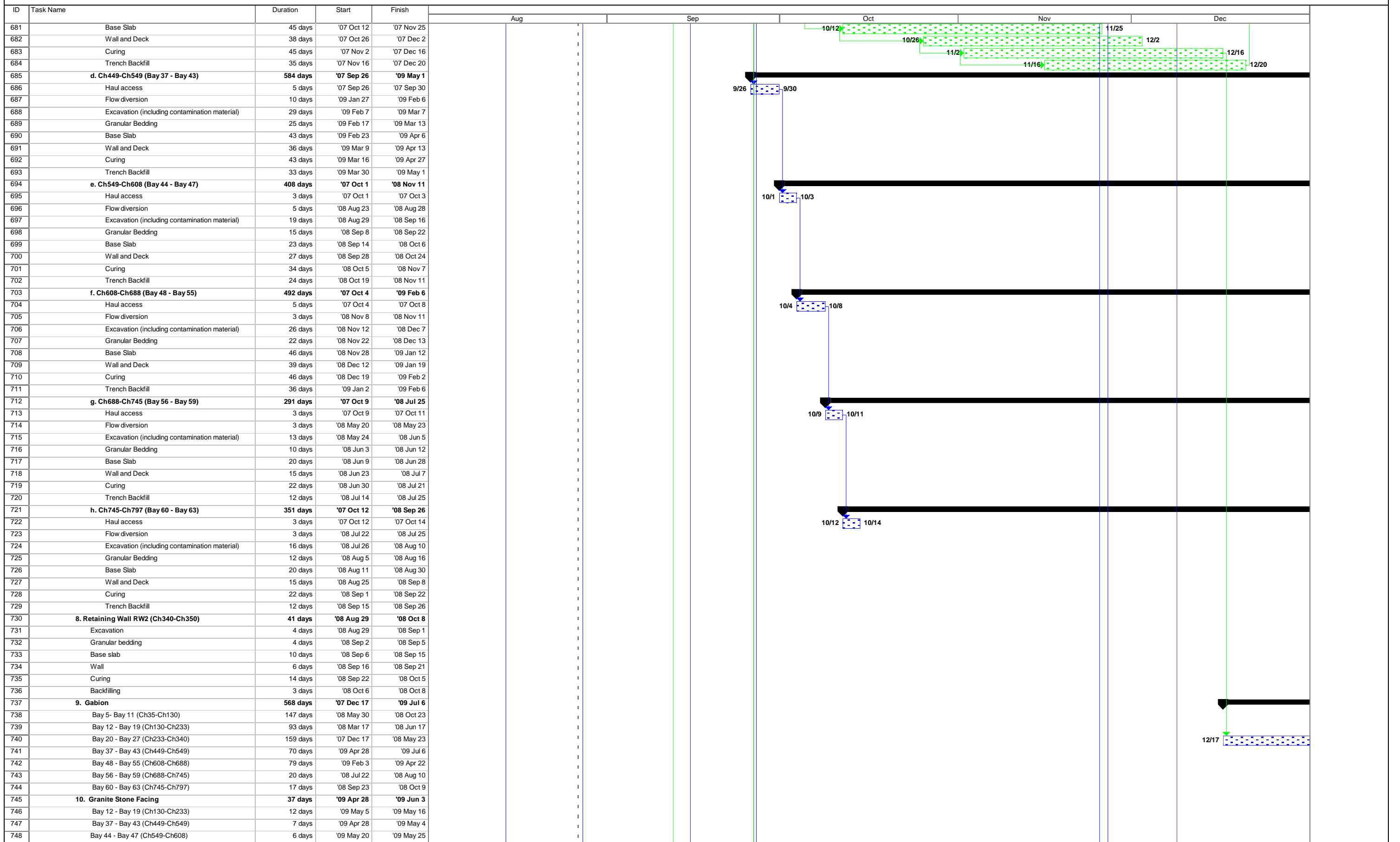




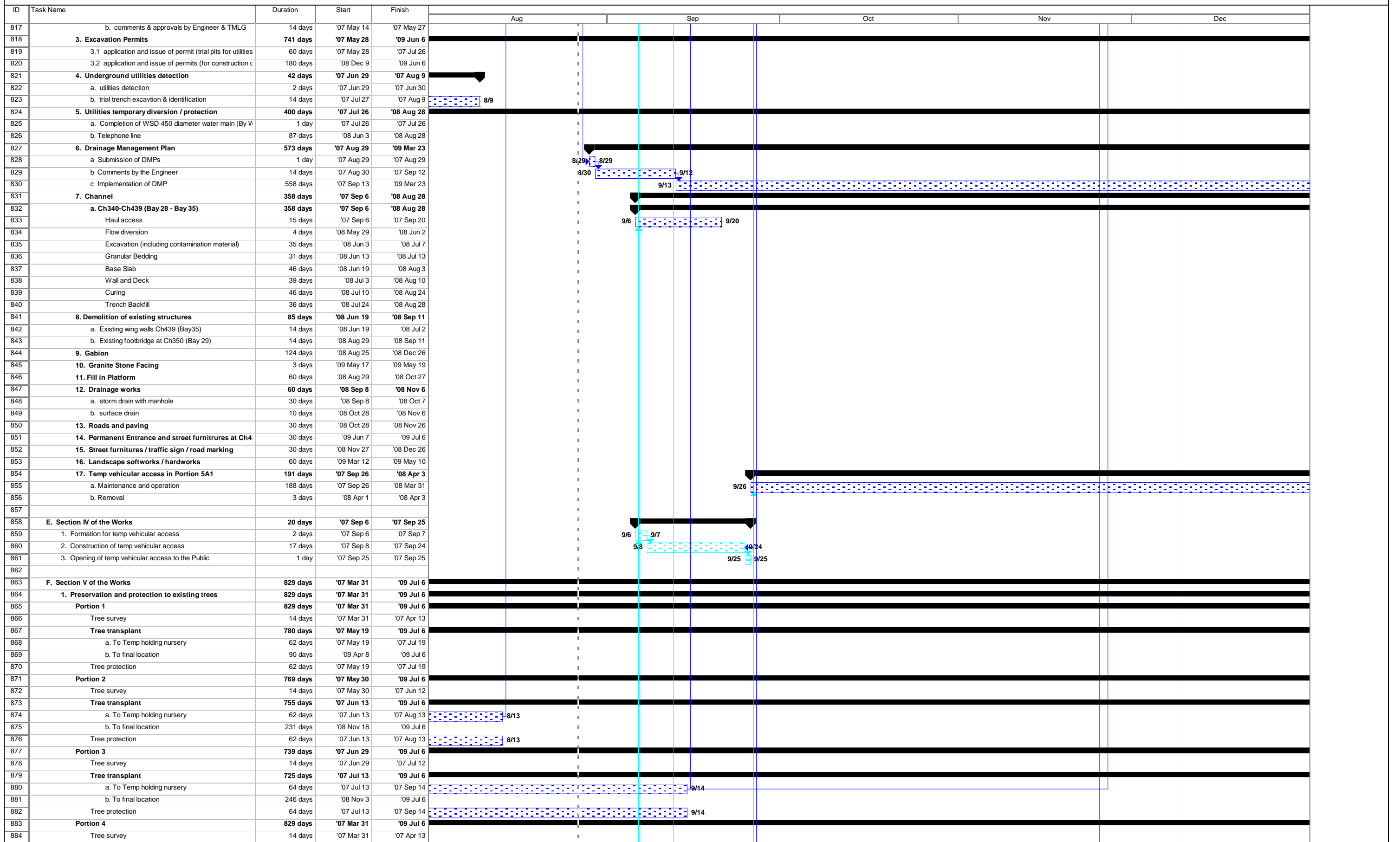


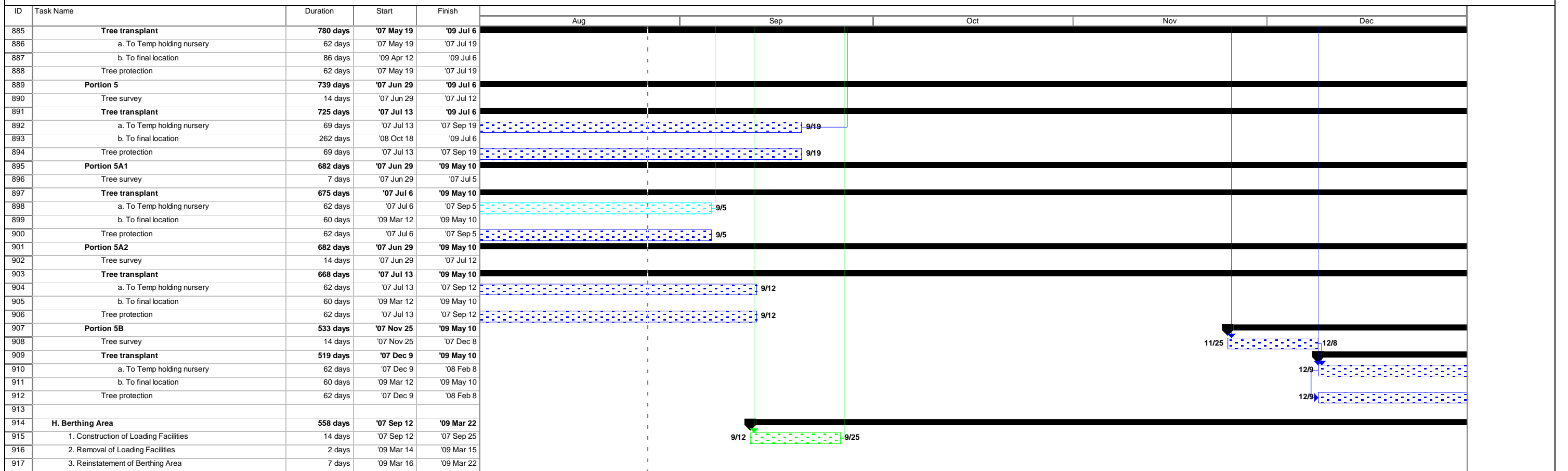
ID	Task Name	Duration	Start	Finish													
					Aug		Sep		Oct		Nov		Dec				
545	Wall	26 days	'07 Dec 27	'08 Jan 21													
546	Curing	14 days	'08 Jan 22	'08 Feb 4													
547	Backfilling	17 days	'08 Feb 5	'08 Feb 21													
548	<b>13. Filling in Platform</b>	<b>454 days</b>	<b>'08 Feb 9</b>	<b>'09 May 7</b>													
549	a. Bay 33- Bay39 (Ch436-Ch530)	25 days	'09 Apr 13	'09 May 7													
550	b. Bay 40 - Bay 45 (CH530-Ch630)	28 days	'09 Jan 24	'09 Feb 20													
551	c. Bay 46 - Bay 52 (Ch630-Ch730)	28 days	'08 Apr 28	'08 May 25													
552	d. Bay 53 - Bay 55 (Ch730-Ch800)	19 days	'08 Feb 9	'08 Feb 27													
553	e. Bay 56c - Bay 67 (Ch844-Ch1037)	62 days	'08 Nov 12	'09 Jan 12													
554	f. Bay 68 - Bay 71 (Ch1037-Ch1146)	10 days	'09 Apr 21	'09 Apr 30													
555	g. Bay 72 - Bay 84 (Ch1146-Ch1330)	14 days	'09 Feb 2	'09 Feb 15													
556	<b>14. Drainage works</b>	<b>489 days</b>	<b>'08 Feb 19</b>	<b>'09 Jun 21</b>													
557	<b>14.1 storm drain with manhole</b>	<b>459 days</b>	<b>'08 Feb 19</b>	<b>'09 May 22</b>													
558	a. Bay 33- Bay39 (Ch436-Ch530)	30 days	'09 Apr 23	'09 May 22													
559	b. Bay 40 - Bay 45 (CH530-Ch630)	20 days	'09 Feb 3	'09 Feb 22													
560	c. Bay 46 - Bay 52 (Ch630-Ch730)	20 days	'08 May 8	'08 May 27													
561	d. Bay 53 - Bay 55 (Ch730-Ch800)	20 days	'08 Feb 19	'08 Mar 9													
562	e. Bay 56c - Bay 67 (Ch844-Ch1037)	90 days	'08 Nov 22	'09 Feb 19													
563	f. Bay 68 - Bay 71 (Ch1037-Ch1146)	20 days	'09 May 1	'09 May 20													
564	g. Bay 72 - Bay 84 (Ch1146-Ch1330)	20 days	'09 Feb 12	'09 Mar 3													
565	<b>14.2. surface drain</b>	<b>480 days</b>	<b>'08 Feb 28</b>	<b>'09 Jun 21</b>													
566	a. Bay 33- Bay39 (Ch436-Ch530)	45 days	'09 May 8	'09 Jun 21													
567	b. Bay 40 - Bay 45 (CH530-Ch630)	45 days	'09 Feb 21	'09 Apr 6													
568	c. Bay 46 - Bay 52 (Ch630-Ch730)	45 days	'08 May 26	'08 Jul 9													
569	d. Bay 53 - Bay 55 (Ch730-Ch800)	45 days	'08 Feb 28	'08 Apr 12													
570	e. Bay 56c - Bay 67 (Ch844-Ch1037)	45 days	'09 Jan 13	'09 Feb 26													
571	f. Bay 68 - Bay 71 (Ch1037-Ch1146)	45 days	'09 May 1	'09 Jun 14													
572	g. Bay 72 - Bay 84 (Ch1146-Ch1330)	45 days	'09 Feb 16	'09 Apr 1													
573	<b>15. Roads and paving</b>	<b>168 days</b>	<b>'09 Jan 13</b>	<b>'09 Jun 29</b>													
574	a. Ch800-Ch881	60 days	'09 Jan 13	'09 Mar 13													
575	b. Ch881-CH1037	52 days	'09 Mar 14	'09 May 4													
576	c. CH1037-CH1165	60 days	'09 May 1	'09 Jun 29													
577	<b>16. Street furnitures / traffic sign / road marking</b>	<b>145 days</b>	<b>'09 Feb 12</b>	<b>'09 Jul 6</b>													
578	a. Ch800-Ch881	37 days	'09 Feb 12	'09 Mar 20													
579	b. Ch881-CH1037	37 days	'09 Apr 13	'09 May 19													
580	c. CH1037-CH1165	37 days	'09 May 31	'09 Jul 6													
581	<b>17. Landscape softworks / hardworks</b>	<b>246 days</b>	<b>'08 Nov 3</b>	<b>'09 Jul 6</b>													
582	a. Bay 33- Bay39 (Ch436-Ch530)	30 days	'09 Jun 7	'09 Jul 6													
583	b. Bay 40 - Bay 45 (CH530-Ch630)	45 days	'09 Mar 23	'09 May 6													
584	c. Bay 46 - Bay 52 (Ch630-Ch730)	45 days	'08 Nov 3	'08 Dec 18													
585	d. Bay 53 - Bay 55 (Ch730-Ch800)	45 days	'08 Dec 18	'09 Feb 1													
586	e. Bay 56c - Bay 67 (Ch844-Ch1037)	45 days	'09 Feb 1	'09 Mar 18													
587	f. Bay 68 - Bay 71 (Ch1037-Ch1146)	45 days	'09 May 23	'09 Jul 6													
588	g. Bay 72 - Bay 84 (Ch1146-Ch1330)	45 days	'09 Mar 18	'09 May 1													
589																	
590	<b>C. Section II of the Works</b>	<b>830 days</b>	<b>'07 Mar 30</b>	<b>'09 Jul 6</b>													
591	<b>C1. Portion 4</b>	<b>829 days</b>	<b>'07 Mar 31</b>	<b>'09 Jul 6</b>													
592	<b>1. Site clearance</b>	<b>14 days</b>	<b>'07 Dec 26</b>	<b>'08 Jan 8</b>													
593	1.1 General clearance	14 days	'07 Dec 26	'08 Jan 8													
594	1.2 Demolition of existing building/ Huts	2 days	'08 Jan 7	'08 Jan 8													
595	<b>2. Temporary Traffic Management Scheme</b>	<b>462 days</b>	<b>'07 Mar 31</b>	<b>'08 Jul 5</b>													
596	<b>2.1 TTMS Proposal (trial pits for utilities and site)</b>	<b>59 days</b>	<b>'07 Mar 31</b>	<b>'07 May 28</b>													
597	a. Submission	45 days	'07 Mar 31	'07 May 14													
598	b. comments & approvals by Engineer & TMLG	14 days	'07 May 15	'07 May 28													
599	<b>2.2 TTMS Proposal (for construction of box culve</b>	<b>60 days</b>	<b>'08 May 6</b>	<b>'08 Jul 5</b>													
600	a. Submission	45 days	'08 May 6	'08 Jun 20													
601	b. comments & approvals by Engineer & TMLG	14 days	'08 Jun 21	'08 Jul 5													
602	<b>3. Excavation Permits</b>	<b>584 days</b>	<b>'07 May 29</b>	<b>'09 Jan 2</b>													
603	3.1 application and issue of permit (trial pits for utilities	60 days	'07 May 29	'07 Jul 27													
604	3.2 application and issue of permits (for construction c	180 days	'08 Jul 6	'09 Jan 2													
605	<b>4. Underground utilities detection</b>	<b>43 days</b>	<b>'07 Jun 29</b>	<b>'07 Aug 10</b>													
606	4.1 utilities detection	28 days	'07 Jun 29	'07 Jul 27													
607	4.2 trial trench excavation & identification	14 days	'07 Jul 28	'07 Aug 10													
608	<b>5. Utilities temporary diversion / protection</b>	<b>94 days</b>	<b>'09 Jan 6</b>	<b>'09 Apr 9</b>													
609	a. WSD water main along Kam Po Road	94 days	'09 Jan 6	'09 Apr 9													
610	b. Street lighting along Kam Po Road	94 days	'09 Jan 6	'09 Apr 9													
611	c. DSD storm Drain	94 days	'09 Jan 6	'09 Apr 9													
612	<b>6. Drainage Management Plan</b>	<b>573 days</b>	<b>'07 Aug 29</b>	<b>'09 Mar 23</b>													





ID	Task Name	Duration	Start	Finish						
					Aug	Sep	Oct	Nov	Dec	
749	Bay 48 - Bay 55 (Ch608-Ch688)	9 days	'09 May 26	'09 Jun 3						
750	<b>11. Ramp No. 1 (Ch650 - Ch675, Bay 52-Bay 53)</b>	<b>33 days</b>	<b>'09 Feb 3</b>	<b>'09 Mar 7</b>						
751	base slab	12 days	'09 Feb 3	'09 Feb 14						
752	Wall	10 days	'09 Feb 15	'09 Feb 24						
753	General fill	5 days	'09 Feb 25	'09 Mar 1						
754	Granular fill and blinding	3 days	'09 Mar 2	'09 Mar 4						
755	Road slab	3 days	'09 Mar 5	'09 Mar 7						
756	<b>12. Ramp No. 2 (Ch515 - Ch540, Bay 42)</b>	<b>33 days</b>	<b>'09 Apr 28</b>	<b>'09 May 30</b>						
757	base slab	12 days	'09 Apr 28	'09 May 9						
758	Wall	10 days	'09 May 10	'09 May 19						
759	General fill	5 days	'09 May 20	'09 May 24						
760	Granular fill and blinding	3 days	'09 May 25	'09 May 27						
761	Road slab	3 days	'09 May 28	'09 May 30						
762	<b>13. Ramp No. 3 (Ch210 - Ch235, Bay 18-Bay19)</b>	<b>33 days</b>	<b>'08 Mar 17</b>	<b>'08 Apr 18</b>						
763	base slab	12 days	'08 Mar 17	'08 Mar 28						
764	Wall	10 days	'08 Mar 29	'08 Apr 7						
765	General fill	5 days	'08 Apr 8	'08 Apr 12						
766	Granular fill and blinding	3 days	'08 Apr 13	'08 Apr 15						
767	Road slab	3 days	'08 Apr 16	'08 Apr 18						
768	<b>14 Ramp No. 4 (Ch20 - Ch45, Bay 4-Bay5)</b>	<b>28 days</b>	<b>'08 May 30</b>	<b>'08 Jun 26</b>						
769	General fill	7 days	'08 May 30	'08 Jun 5						
770	Granular fill and blinding	4 days	'08 Jun 6	'08 Jun 9						
771	Sloping side wall and road slab	17 days	'08 Jun 10	'08 Jun 26						
772	<b>15. Demolition of existing wing walls Ch449</b>	<b>14 days</b>	<b>'09 Feb 23</b>	<b>'09 Mar 8</b>						
773	<b>16. Filling in Platform</b>	<b>123 days</b>	<b>'08 Jun 3</b>	<b>'08 Oct 3</b>						
774	a. Bay 3- Bay 27 (Ch11-Ch340)	34 days	'08 Jun 3	'08 Jul 6						
775	b. Bay 37 - Bay 55 (Ch449-Ch688)	34 days	'08 Aug 29	'08 Oct 1						
776	c. Bay 56 - Bay 63 (Ch688-Ch797)	7 days	'08 Sep 27	'08 Oct 3						
777	<b>17. Drainage works</b>	<b>146 days</b>	<b>'08 Jun 13</b>	<b>'08 Nov 5</b>						
778	<b>17.1 storm drain with manhole and headwall</b>	<b>132 days</b>	<b>'08 Jun 13</b>	<b>'08 Oct 22</b>						
779	a. Bay 3- Bay 27 (Ch11-Ch340)	20 days	'08 Jun 13	'08 Jul 2						
780	b. Bay 37 - Bay 55 (Ch449-Ch688)	45 days	'08 Sep 8	'08 Oct 22						
781	c. Bay 56 - Bay 63 (Ch688-Ch797)	14 days	'08 Oct 4	'08 Oct 17						
782	<b>17.2 surface drain</b>	<b>122 days</b>	<b>'08 Jul 7</b>	<b>'08 Nov 5</b>						
783	a. Bay 3- Bay 27 (Ch11-Ch340)	34 days	'08 Jul 7	'08 Aug 9						
784	b. Bay 37 - Bay 55 (Ch449-Ch688)	35 days	'08 Oct 2	'08 Nov 5						
785	c. Bay 56 - Bay 63 (Ch688-Ch797)	14 days	'08 Oct 4	'08 Oct 17						
786	<b>18. Roads and paving</b>	<b>275 days</b>	<b>'08 Sep 28</b>	<b>'09 Jun 29</b>						
787	a. Ch233 - Ch340	30 days	'08 Sep 28	'08 Oct 27						
788	b. Ch449 - Ch549	30 days	'08 Dec 1	'08 Dec 30						
789	c. Ch549 - Ch609	30 days	'08 Nov 1	'08 Nov 30						
790	d. Ch609 - Ch688	30 days	'08 Oct 2	'08 Oct 31						
791	e. Permanent Entrance at Ch449	23 days	'09 Jun 7	'09 Jun 29						
792	<b>19. Street furnitures</b>	<b>252 days</b>	<b>'08 Oct 28</b>	<b>'09 Jul 6</b>						
793	a. Ch233 - Ch340	30 days	'08 Oct 28	'08 Nov 26						
794	b. Ch449 - Ch549	30 days	'08 Dec 31	'09 Jan 29						
795	c. Ch549 - Ch609	30 days	'08 Dec 1	'08 Dec 30						
796	d. Ch609 - Ch688	30 days	'08 Nov 1	'08 Nov 30						
797	e. Permanent Entrance at Ch449	7 days	'09 Jun 30	'09 Jul 6						
798	<b>20. Landscape softworks / hardworks</b>	<b>250 days</b>	<b>'08 Oct 18</b>	<b>'09 Jun 24</b>						
799	a. Ch35 - Ch340	45 days	'09 May 11	'09 Jun 24						
800	b. Ch449 - Ch549	45 days	'09 Jan 26	'09 Mar 11						
801	c. Ch549 - Ch609	45 days	'08 Dec 12	'09 Jan 25						
802	d. Ch609 - Ch688	45 days	'08 Oct 28	'08 Dec 11						
803	e. Ch688 - Ch797	10 days	'08 Oct 18	'08 Oct 27						
804	<b>21. Road Diversion in Kam Po Road</b>	<b>102 days</b>	<b>'08 Dec 23</b>	<b>'09 Apr 3</b>						
805	a. Temp Decking above Bay 3 and temp road pavemr	10 days	'08 Dec 23	'09 Jan 2						
806	b. Implementation of road diversion	1 day	'09 Jan 2	'09 Jan 2						
807	c. Removal of decking	1 day	'09 Apr 3	'09 Apr 3						
808										
809	<b>D. Section III of the Works</b>	<b>830 days</b>	<b>'07 Mar 30</b>	<b>'09 Jul 6</b>						
810	<b>D1. Portions 5A1, 5A2 and 5B</b>	<b>830 days</b>	<b>'07 Mar 30</b>	<b>'09 Jul 6</b>						
811	<b>1. Site clearance</b>	<b>4 days</b>	<b>'07 Sep 6</b>	<b>'07 Sep 9</b>						
812	1.1 General site clearance	4 days	'07 Sep 6	'07 Sep 9						
813	1.2 Demolition of existing building/ Huts	4 days	'07 Sep 6	'07 Sep 9						
814	<b>2. Temporary Traffic Management Scheme</b>	<b>59 days</b>	<b>'07 Mar 30</b>	<b>'07 May 27</b>						
815	<b>TTMS Proposal (trial pits for utilities and site ent)</b>	<b>59 days</b>	<b>'07 Mar 30</b>	<b>'07 May 27</b>						
816	a. Submission	45 days	'07 Mar 30	'07 May 13						



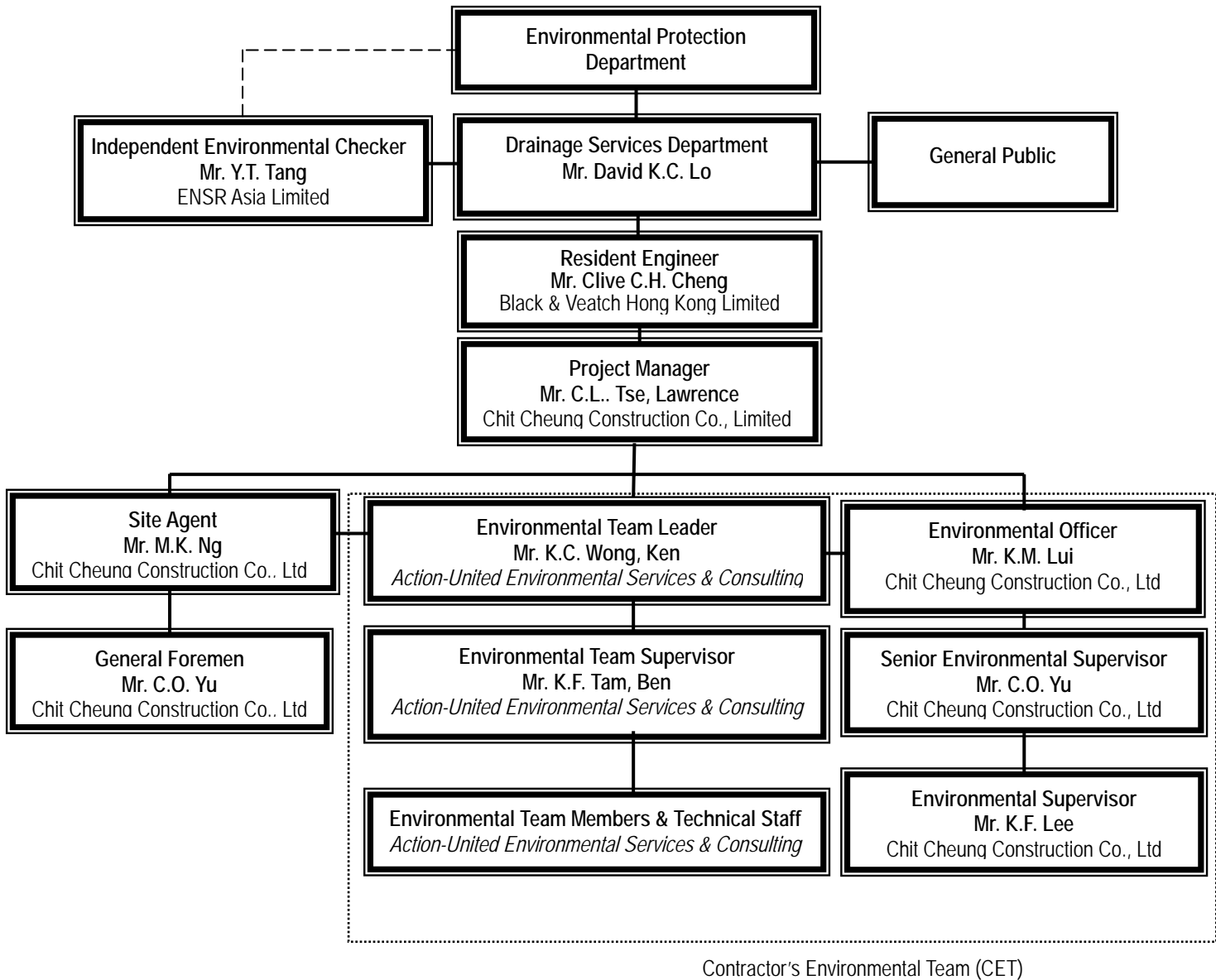




## **Appendix C**

### **Environmental Organization Structure**

### Environmental Organization Structure



**Contact Details of Key Personnel**

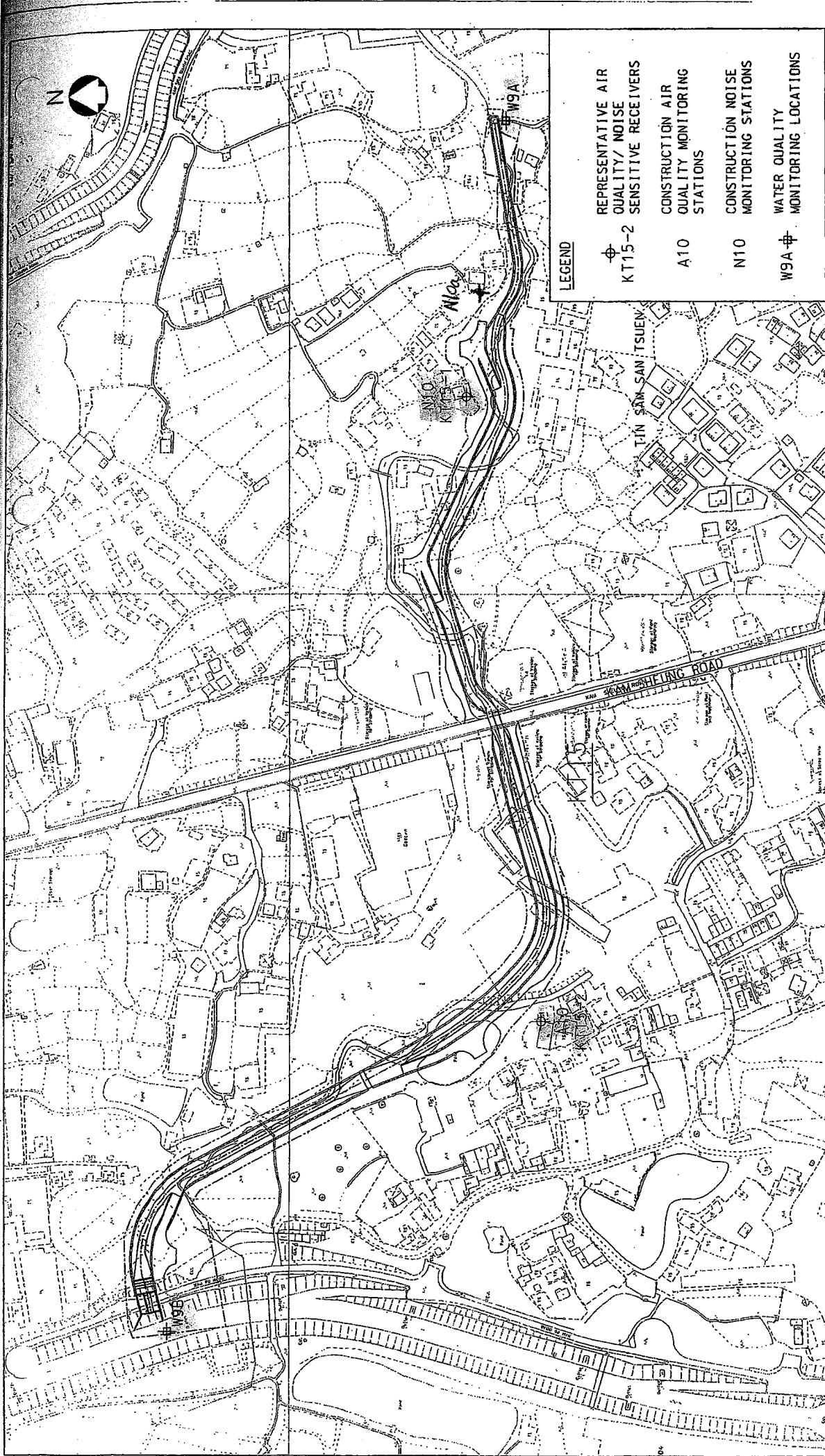
Organization	Project Role	Name of Key Staff	Tel No.	Fax No.
DSD	Employer	Mr. David K.C. LO	2594-7254	2827-8526
B&V	Engineer	Mr. Kelvin N.F. LAU	2601-1000	2601-3988
B&V	Engineer's Representative	Mr. Clive C.H. CHENG	2443-1442	2443-7307
ENSR	Independent Environmental Checker	Mr. Y.T. Tang	3105-8537	2891-0305
CCC	Project Director	Mr. P.Y. CHENG	9023-4821	2403-1162
CCC	Project Manager	Mr. Lawrence TSE	9752-0748	2479-1365
CCC	Site Agent	Mr. M.K. NG	6603-9711	2479-1365
CCC	Site Engineer	Mr. Jimmy CHAN	9234-8632	2479-1365
CCC	Environmental Officer	Mr. LUI Kam Man	9257-9111	2479-1365
CCC	Senior Environmental Supervisor	Mr. YU Chor-on	9026-9501	2479-1365
CCC	Environmental Supervisor	Mr. LEE Kwok Fai	9868-9908	2479-1365
CCC	Safety Officer	Mr. SHEA Yan Keung	6086-4658	2479-1365
AUES	Environmental Team Leader	Ken Wong	2959-6059	2959-6079
AUES	Ecologist	Vincent Lai	9406-9784	2959-6079
AUES	Decontamination Specialist	David Yeung	2959-6059	2959-6079

## Legend:

DSD (Employer)	-	Drainage Services Department
B&V (Engineer)	-	Black & Veatch Hong Kong Limited
CCC (Contractor)	-	Chit Cheung Construction Company Limited.
ENSR (IEC)	-	ENSR Asia (HK) Ltd.
AUES (ET)	-	Action-United Environmental Services & Consulting

## **Appendix D**

### **Locations of Designated Monitoring Station/Locations/Area**




**LEGEND**

- ⊕ REPRESENTATIVE AIR QUALITY/ NOISE SENSITIVE RECEIVERS  
KT15-2
- A10 CONSTRUCTION AIR QUALITY MONITORING STATIONS
- N10 CONSTRUCTION NOISE MONITORING STATIONS
- W9A ⊕ WATER QUALITY MONITORING LOCATIONS

Figure No.	ATT4-4.3	Revision	-
Reference	-	File Name	3820470201-137.DGN
Prepared	WYC	Checked	MC
Date	DEC. 2002	Scale	1 : 2000

**CONSTRUCTION PHASE AIR QUALITY/NOISE/WATER QUALITY  
MONITORING LOCATIONS AT KT15**

YUEN LONG, KAM TIN,  
 NGAU TAM MEI AND TIN SHUI WAI  
 DRAINAGE IMPROVEMENT, STAGE I, PHASE 2B

  
**BLACK & VEATCH HONG KONG LIMITED**  
 博風工程顧問有限公司

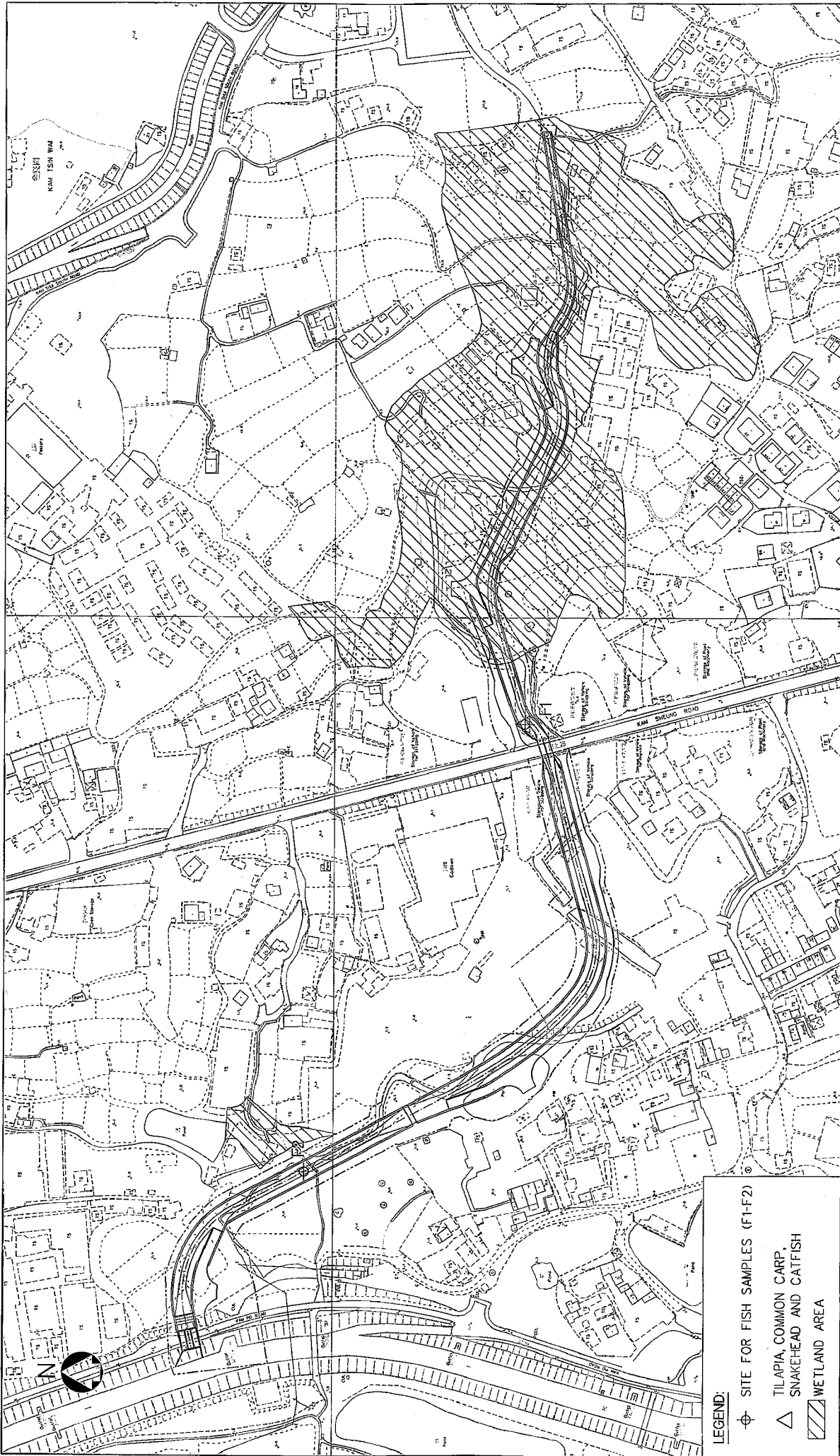


Figure No.	3.3	Revision	0
Reference		File Name	3820470201-114.DGN
Prepared	AEC	Checked	WYC
Date	MAR. 2003	Scale	1 : 2000


Title :

**ECOLOGICAL MONITORING AREA KT15**

**LEGEND:**

- ⊕ SITE FOR FISH SAMPLES (F1-F2)
- △ TILAPIA, COMMON CARP, SNAKEHEAD AND CATFISH
- ▨ WETLAND AREA

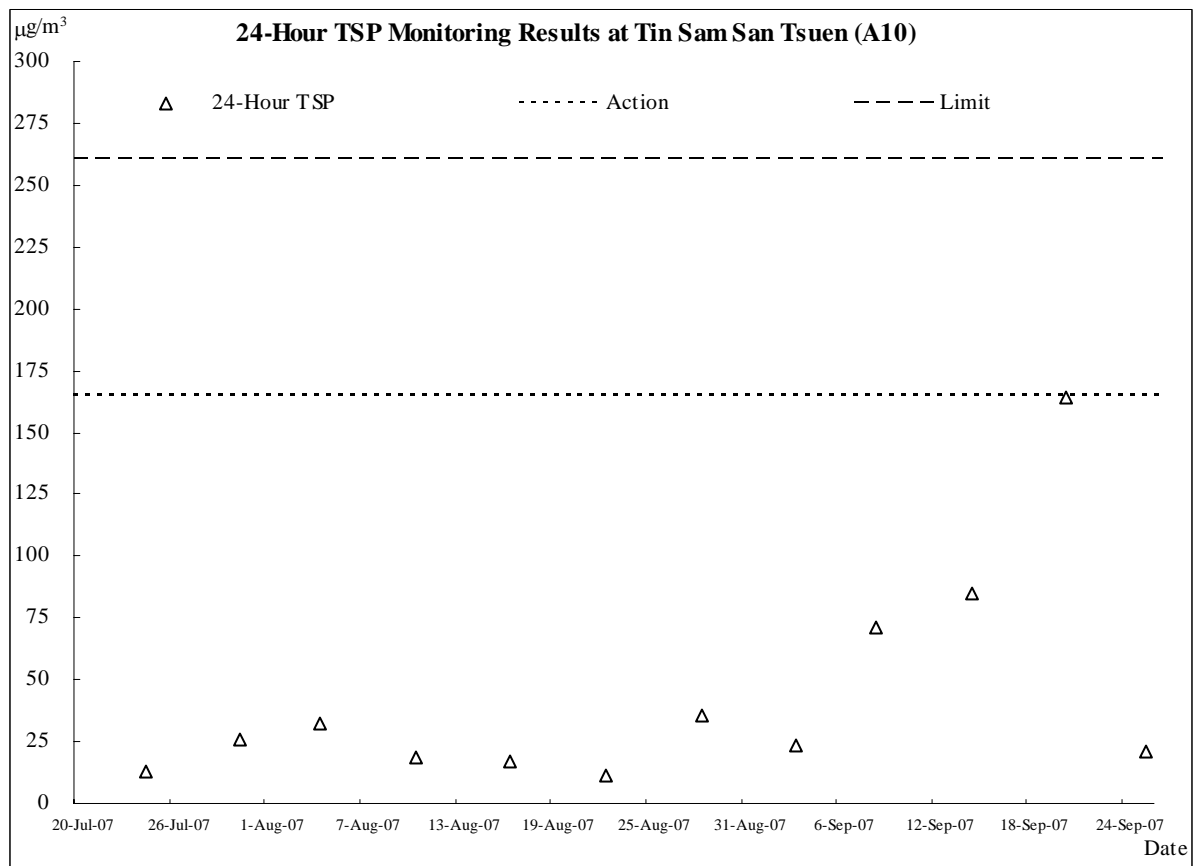
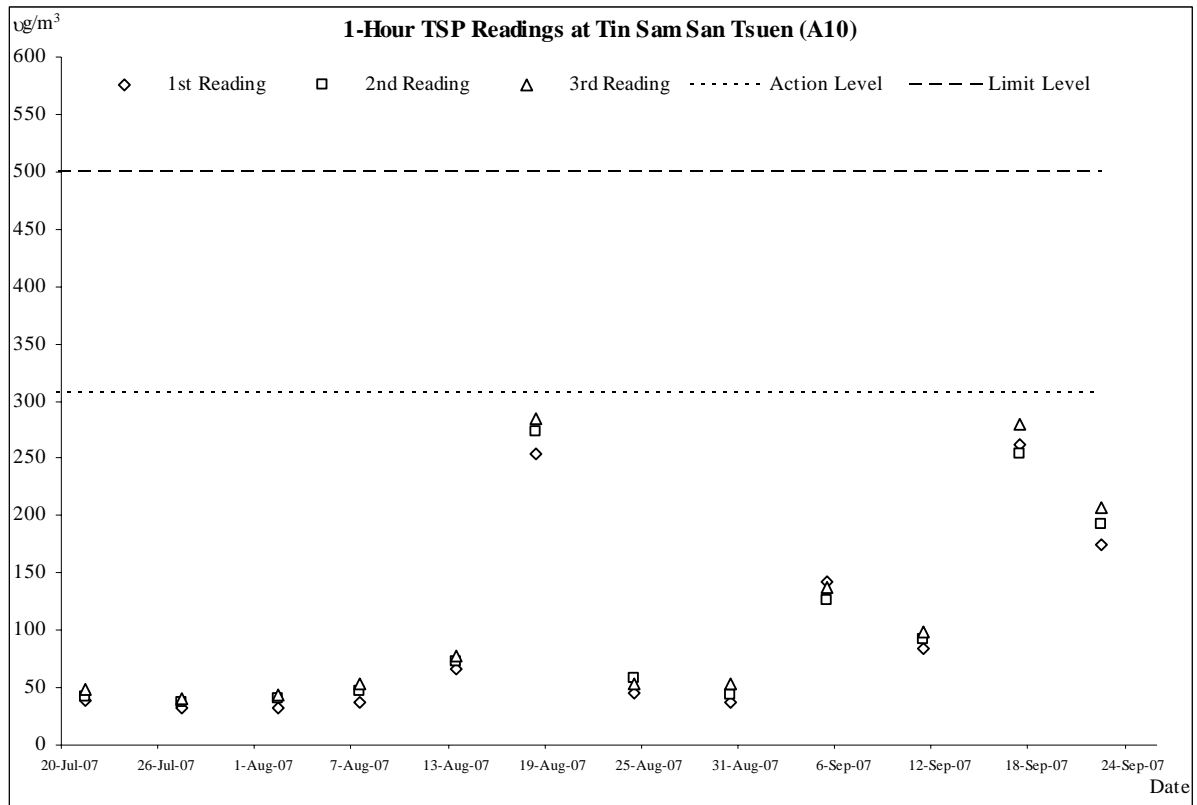
YUEN LONG, KAM TIN,  
NGAU TAM MEI AND TIN SHUIWAI  
DRAINAGE IMPROVEMENT, STAGE1, PHASE 2B

 **BLACK & VEATCH HONG KONG LIMITED**  
博威工程顧問有限公司

## **Appendix E**

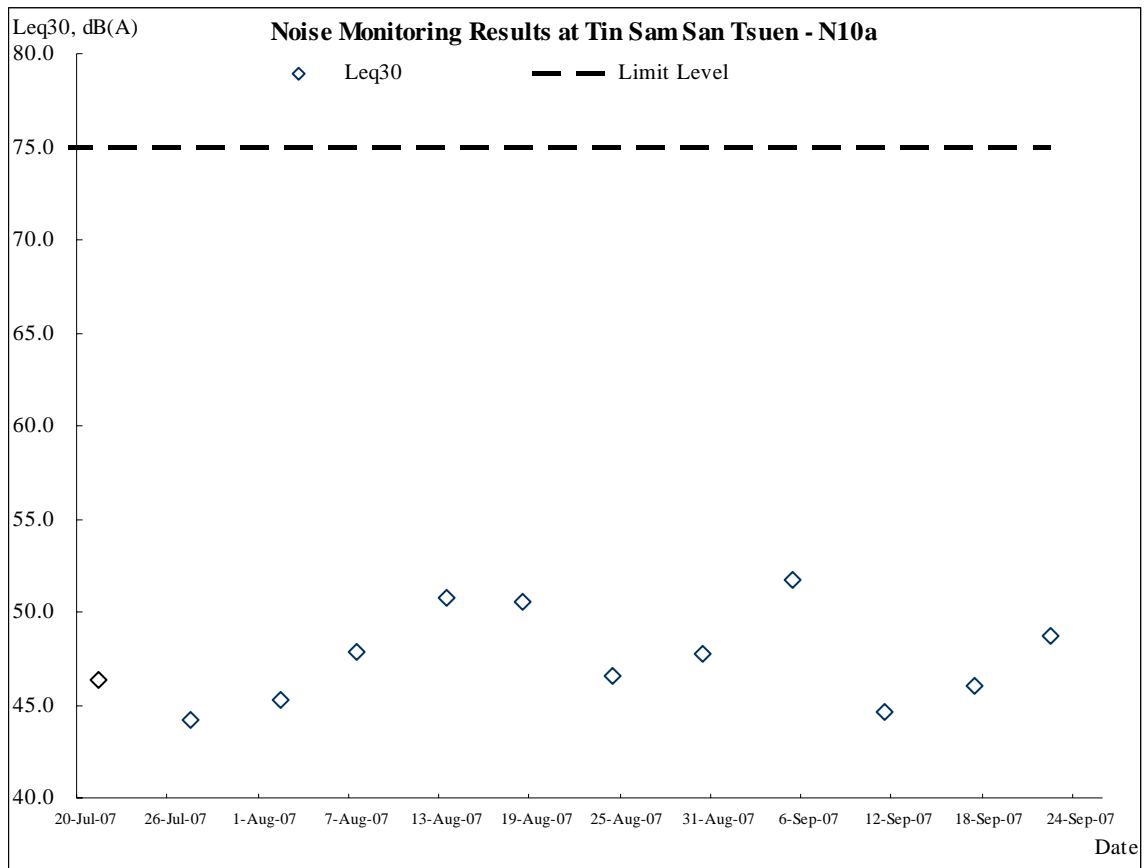
# **Graphical Plots of Air Quality, Construction Noise & Stream Water Quality Monitoring**

**Air Quality**

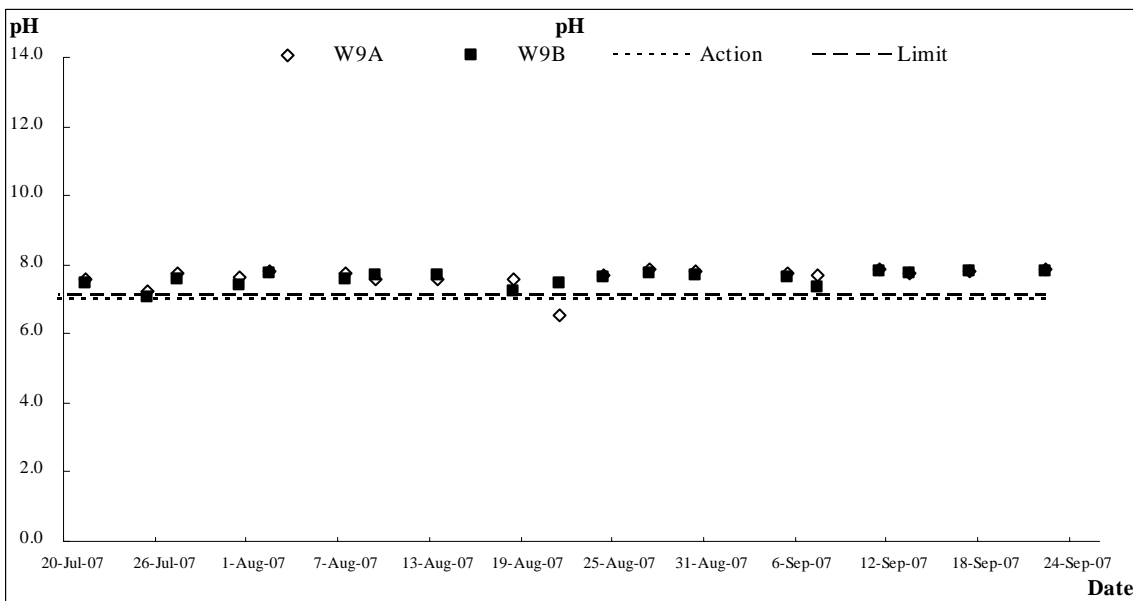
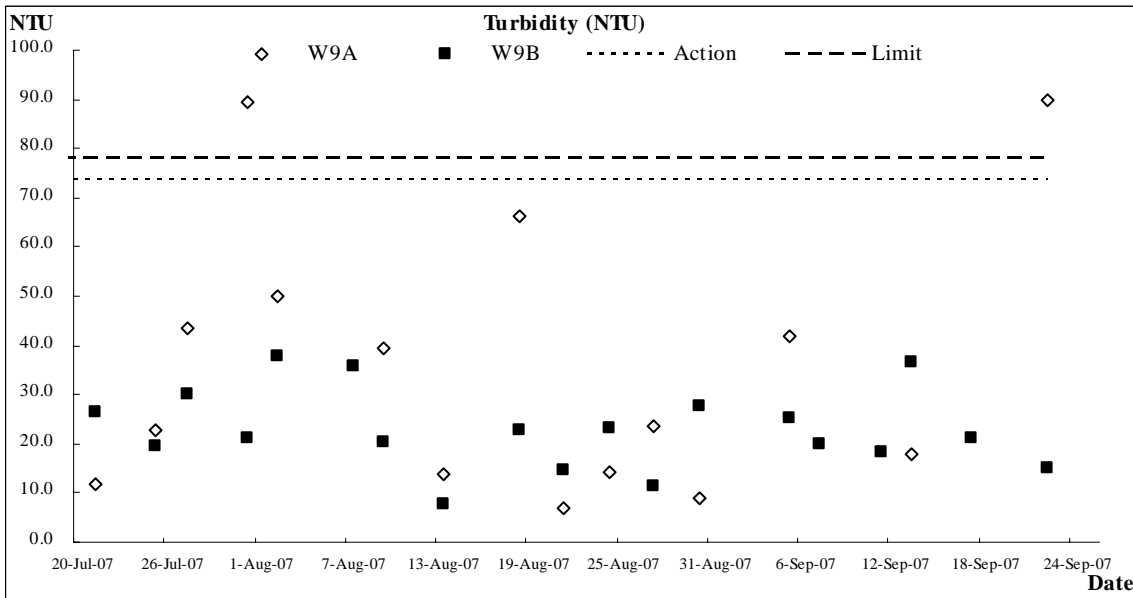
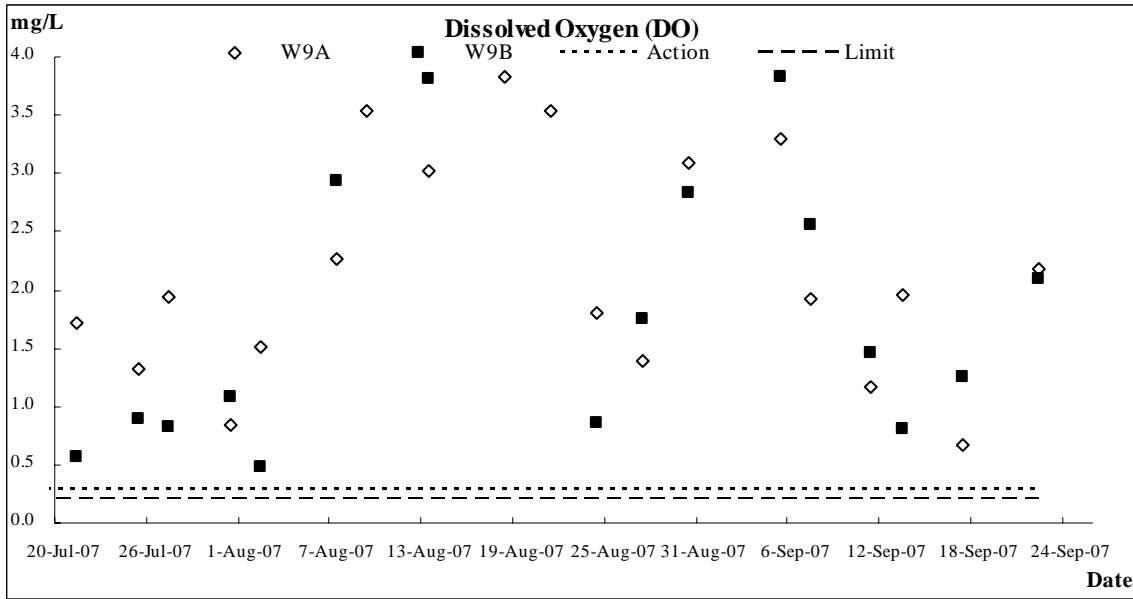


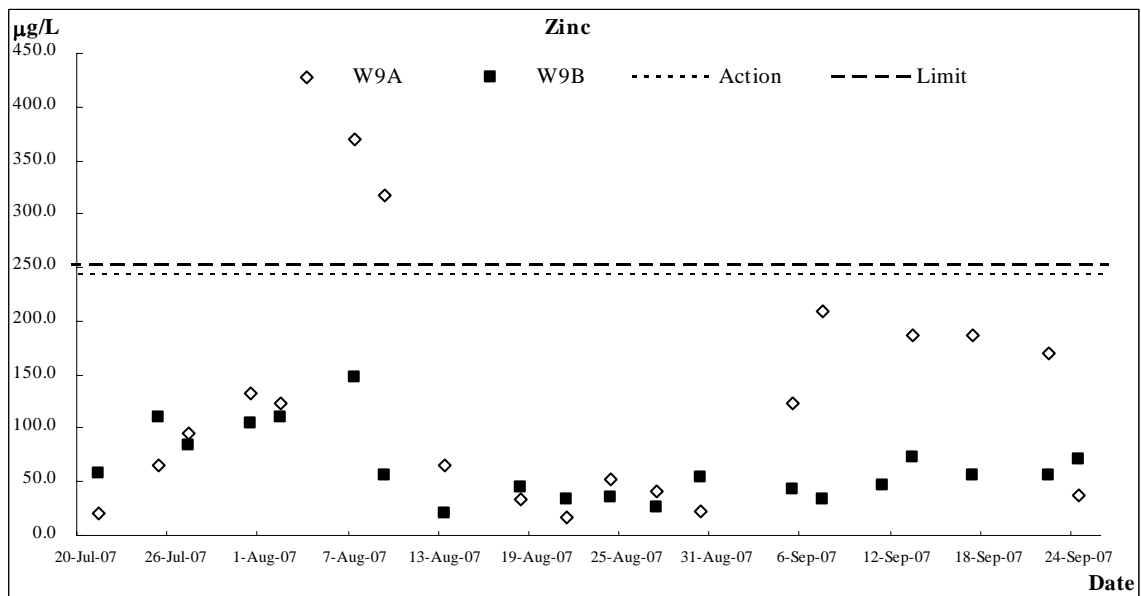
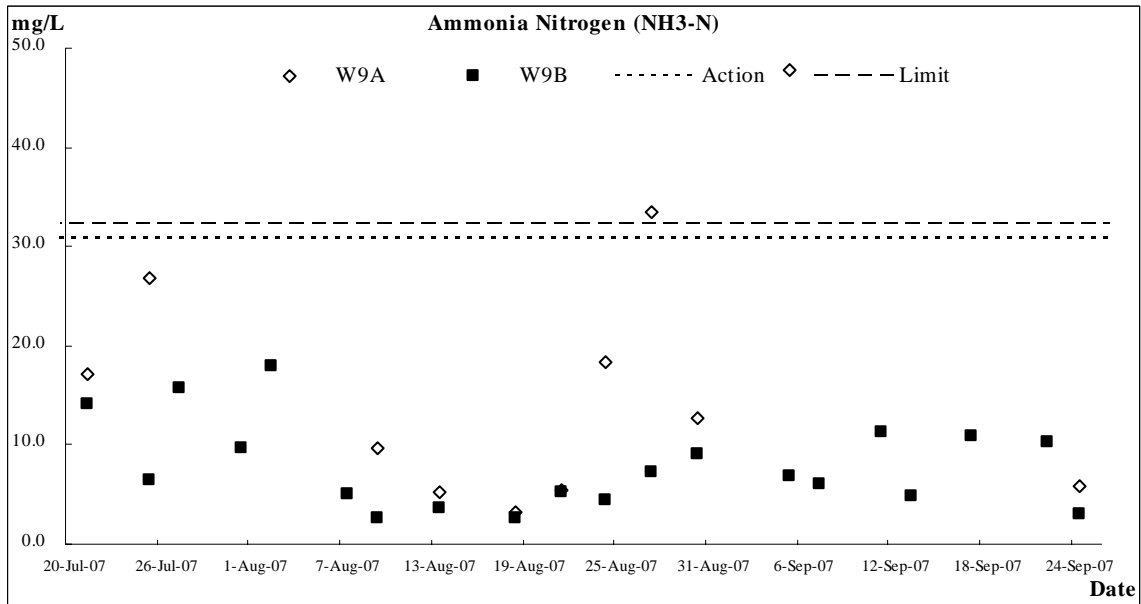
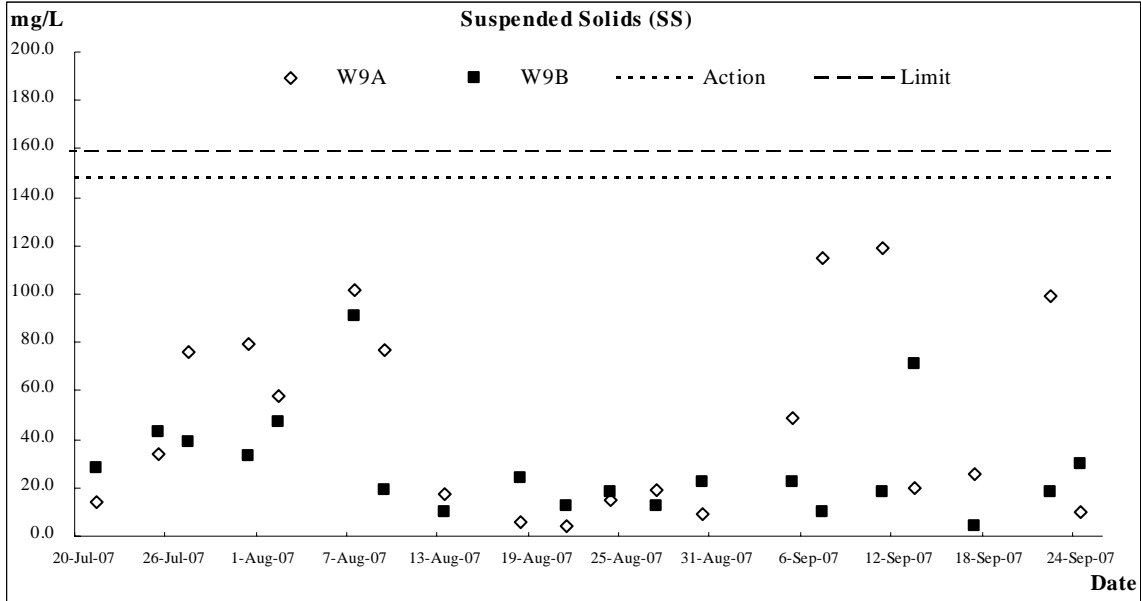


**Construction Noise**



**Stream Water Quality**





## **Appendix F**

### **Meteorological Data in the Reporting Quarter**

**Meteorological Data Extracted from HKO in the Reporting Quarter**

Date		Weather	Lau Fau Shan Weather Station				
			Total Rainfall (mm)	Mean Air Temperatures (°C)	Wind Speed (km/h)	Mean Relative Humidity (%)	Wind Direction
20-Jul-07	Fri	fine/very hot/fresh/moderate/isolate showers	0	30.8	22.5	72	S/SW
21-Jul-07	Sat	fine/very hot/moderate	0	30.5	20	73	S/SW
22-Jul-07	Sun	fine/very hot/moderate	0	31	16.5	70.5	S/SW
23-Jul-07	Mon	fine/very hot/moderate	0	30.6	13.5	79.5	S/SW
24-Jul-07	Tue	fine/very hot/moderate	0	31	17	74	S/SW
25-Jul-07	Wed	fine/very hot/moderate	0	30.2	16	71.5	S/SW

Date		Weather	Lau Fau Shan Weather Station				
			Total Rainfall (mm)	Mean Air Temperatures (°C)	Wind Speed (km/h)	Mean Relative Humidity (%)	Wind Direction
26-Jul-07	Thu	fine/very hot/moderate	0	28.3	15.5	72	W
27-Jul-07	Fri	fine/very hot/isolated showers/light winds	Trace	29.5	15.5	72.5	S/SE
28-Jul-07	Sat	fine/very hot/isolated showers/moderate	Trace	Maintenance			
29-Jul-07	Sun	fine/very hot/isolated showers/moderate	Trace	Maintenance			
30-Jul-07	Mon	fine/very hot/isolated showers/light winds	Trace	Maintenance			
31-Jul-07	Tue	fine/isolated showers/thunderstorms/very hot/light winds	Trace	Maintenance			
1-Aug-07	Wed	fine/very hot/isolated showers/thunderstorms/light winds	0	29.7	17	77	S/SE
2-Aug-07	Thu	fine/very hot/isolated showers/light winds	0	30.1	17.5	77	S/SE
3-Aug-07	Fri	fine/very hot/light winds	0	31	13	72.5	S/SE
4-Aug-07	Sat	fine/very hot/a few showers/moderate	0	30.3	15	66	E
5-Aug-07	Sun	hot/isolated showers/squally thunderstorms	7.7	30.8	10.5	73.5	E/SE
6-Aug-07	Mon	cloudy/scattered showers/squally thunderstorms/moderate/fresh	100.4	27.3	14	88	E/NE
7-Aug-07	Tue	cloudy/a few showers/thunderstorms/sunny intervals/moderate/fresh	17.4	29	13.5	82	E
8-Aug-07	Wed	cloudy/haze/squally showers/thunderstorms/moderate/fresh/strong	17.9	29.7	10.5	73	E/SE
9-Aug-07	Thu	cloudy/overcast/rain/squalls/fresh	33.6	28.2	22	78.5	E/NE
10-Aug-07	Fri	cloudy/overcast/squally showers/moderate/fresh/strong	57.8	25.5	16	85	E/SE
11-Aug-07	Sat	cloudy/rain/fresh/strong/squally thunderstorms	39.9	25.6	23.5	89.5	S/SW
12-Aug-07	Sun	cloudy/rain/mist/moderate	5.3	26.7	8	91.5	W/SW
13-Aug-07	Mon	cloudy/a few showers/thunderstorms/moderate	Trace	28.3	13	89	S/SE
14-Aug-07	Tue	cloudy/overcast/rain/squally thunderstorms/moderate	14.7	26.3	21.5	85	W/SW
15-Aug-07	Wed	cloudy/rain moderate	10.9	27.7	14	85	NW
16-Aug-07	Thu	cloudy/a few showers/moderate	60.7	25.6	12	81	E/NE
17-Aug-07	Fri	sunny intervals/a few showers/fresh/strong	27.9	27.8	13.5	81.5	E
18-Aug-07	Sat	fine/very hot/haze/moderate/squally thunderstorms/moderate	1.2	28.5	13.5	79.5	W/NW
19-Aug-07	Sun	fine/very hot/light winds	0	29	17.7	71	W/SW
20-Aug-07	Mon	cloudy/scattered showers/squally thunderstorms/fresh	Trace	27.4	25.5	84	SW
21-Aug-07	Tue	cloudy/moderate/fresh/scattered showers/squally thunderstorms	Trace	28.1	21	79	S/SW
22-Aug-07	Wed	cloudy/fresh/moderate/squally thunderstorms/scattered showers	15.1	26.6	25	85.5	S/SW
23-Aug-07	Thu	cloudy/scattered showers/squally thunderstorms/light winds	Trace	28.3	16	84.5	S/SE
24-Aug-07	Fri	fine/isolated showers/light winds	15.3	28.1	17	85	E/SE
25-Aug-07	Sat	a few showers/sunny periods/light winds	10.3	28	12.5	82.5	E/SE

Date		Weather	Lau Fau Shan Weather Station				
			Total Rainfall (mm)	Mean Air Temperatures (°C)	Wind Speed (km/h)	Mean Relative Humidity (%)	Wind Direction
26-Aug-07	Sun	sunny intervals/a few showers/moderate	Trace	27.9	12	73	S/SE
27-Aug-07	Mon	a few showers/sunny intervals/moderate	25	28.5	12	78	E
28-Aug-07	Tue	a few showers/sunny intervals/moderate	25.9	28.5	13	83.5	E
29-Aug-07	Wed	sunny periods/isolated showers/moderate	1.3	29.3	12	80	E
30-Aug-07	Thu	fine/isolated showers/thunderstorms/light winds	0.1	28.1	12	79.5	SE
31-Aug-07	Fri	fine/hot/isolated showers/light winds	0	28.4	14	79.5	SE
1-Sep-07	Sat	fine/hot/isolated showers/thunderstorms/light winds	0	28.3	12	75	S/SE
2-Sep-07	Sun	sunny intervals/a few showers/squally	3.7	27.7	9.5	84	E/SE
3-Aug-07	Mon	cloudy/a few showers/squally thunderstorms/light winds	Trace	28.9	14.5	77	SE
4-Sep-07	Tue	cloudy/a few showers/light winds	2.3	27	15	81.5	S/SE
5-Sep-07	Wed	cloudy/a few showers/sunny intervals/moderate	1.5	26.6	15	78.5	E/NE
6-Sep-07	Thu	cloudy/sunny intervals/hazy/moderate	0	26.1	14.5	69.5	E/NE
7-Sep-07	Fri	sunny periods/hazy/moderate	0.1	26.7	8.2	72	E/SE
8-Sep-07	Sat	sunny periods/cloudy/moderate	Trace	28.3	9.5	74	E
9-Sep-07	Sun	sunny periods/cloudy/moderate	Trace	28.3	16	74	E/SE
10-Sep-07	Mon	cloudy/sunny intervals/rain moderate fresh	Trace	28.6	16.5	74.5	E
11-Sep-07	Tue	Sunny periods/rain/moderate/fresh	10.7	28.7	16.5	68.7	E
12-Sep-07	Wed	fine/isolated showers/moderate	Trace	28.3	13	72.5	E
13-Sep-07	Thu	fine/dry/moderate/fresh	0	28.9	14	63.5	E
14-Sep-07	Fri	fine/hazy/dry/light winds	0	27.9	8	64.5	E/SE
15-Sep-07	Sat	fine/hazy/isolated showers/light winds	0	28.6	9	69.5	S/SE
16-Sep-07	Sun	hazy/isolated showers/light winds	6	28.9	7.5	77	E/SE
17-Sep-07	Mon	hazy/isolated showers/light winds	0.5	28.5	6	81	E
18-Sep-07	Tue	fine/very dry/haze/moderate/fresh	0	28.5	20	56	N
19-Sep-07	Wed	fine/dry/hazy/fresh/strong	0	27.6	24.2	51	N/NW
20-Sep-07	Thu	sunny periods/dry/moderate/fresh	0.1	28.4	21	53.5	NE
21-Sep-07	Fri	sunny periods/haze/rain/moderate/fresh	1.7	27.8	13.5	66.5	E/NE
22-Sep-07	Sat	fine/dry/haze/moderate/fresh	0	28.2	15.5	6.12	NE
23-Sep-07	Sun	cloudy/overcast/rain/fresh/strong	12.5	25.4	24.5	83.5	N/NE
24-Sep-07	Mon	cloudy/overcast/rain/fresh/strong	60.1	24.8	17	94	E/NE
25-Sep-07	Tue	cloudy/rain/thunderstorms/fresh/strong	2.1	26.8	15.5	88	E

## **Appendix G**

### **Response to Comments**



**Contract No. DC/2006/02**

**Yuen Long, Kam Tin, Ngau Tam Mei and Tin Shui Wai Drainage Improvements, Stage 1, Phase 2B – Cheung Chun San Tsuen and Kam Tsin Wai  
Response to IEC's comments on KT15 – Quarterly EM&A Summary Report (Revision 0) [Received e-mail on 22 Oct 2007 10:02]**

No.	Section / Paragraph	Comments	Ref.	Response to Comments
1	ES.05, ES.15	For the exceedance of ecology monitoring, please note that A / L level is the “ decrease in the total number of wetland dependent bird species or individuals of the wetland dependent bird species from baseline” If exceedance was found in both the number of wetland dependent bird species and individuals of the wetland dependent bird species, it should be counted as 1 exceedance. Please revise	-	Noted.
2	6.01	Please explain how to implement the waste management by Environmental Officer or Environmental Supervisor	-	Section 6.01 had been revised.