

TREE ASSESSMENT SCHEDULE

Revision No. (Date)  
Revision A (January 2006)

Job no.: 14898

Project Name: Yuen Long, Kam Tin, Ngau Tam Mei & Tin Shui Wai Drainage Improvement, Stage 1 Phase 2B - Kam Tin

Location : Shek Wu Tong/ Yuen Kong San Tsuen, Kam Tin (KT 14)				Plan Ref. No.: TS-07 to -10				Prepared By : EDAW Ltd.					Date of Report : September 2005			
(a)	(b)	(c)		(d)		(d)	(e)	(f)	(g)	(h)	(i)	(j)	(k)	(l)	(m)	(n)
Tree No.	Dwg. No.	Species		Jurisdiction		Size			Average Health (Good/Fair/Poor)	Form (Good/Fair/Poor)	Survival Rate After Transplanting (High/ Medium /Low)	Amenity Value (High/ Medium /Low)	Recommend-ation (Retain/ Transplant/ Fell)	Justification for Recommendation	Special Features	Remarks
		Botanical Name	Chinese Name	LCSD	AFCD	Overall Height (metre)	Trunk Diameter (metre)	Crown Spread (metre)								
T122	TS-07	<i>Carica papaya</i>	番木瓜		*	4	0.13	1	Fair	Fair	Low	Low	Retain	Not affected by proposed works	-	vined
T123	TS-07	<i>Tamarindus indica</i>	羅望子		*	4	0.10	4	Good	Good	Low	Medium	Retain	Not affected by proposed works	-	-
T124	TS-07	<i>Dimocarpus longan</i>	龍眼		*	3	0.12	4	Good	Fair	Medium	Medium	Retain	Not affected by proposed works	-	-
T125	TS-07	<i>Ficus superba</i> var. <i>japonica</i>	筆管榕		*	6	0.30	5	Good	Good	High	Medium	Retain	Not affected by proposed works	-	-

Note:       The jurisdiction is determined in accordance with Environment, Transport and Works Bureau Technical Circular No.14/2002 for confirmation by relevant departments.

TREE ASSESSMENT SCHEDULE

Revision No. (Date)

Revsion A (January 2006)

Revsion B (February 2006)

Job no.: 14898

Project Name: Yuen Long, Kam Tin, Ngau Tam Mei & Tin Shui Wai Drainage Improvement, Stage 1 Phase 2B - Kam Tin

Location : Sheu Wu Tong/ Kam Tsin Wai, Kam Tin (KT 15)				Plan Ref. No.: TS-05 to -06					Prepared By : EDAW Ltd.					Date of Report : September 2005		
(a)	(b)	(c)		(d)		(d)	(e)	(f)	(g)	(h)	(i)	(j)	(k)	(l)	(m)	(n)
Tree No.	Dwg. No.	Species		Jurisdiction		Size			Average Health (Good/Fair/Poor)	Form (Good/Fair/Poor)	Survival Rate After Transplanting (High/ Medium /Low)	Amenity Value (High/ Medium /Low)	Recommend-ation (Retain/ Transplant/ Fell)	Justification for Recommendation	Special Features	Remarks
		Botanical Name	Chinese Name	LCSD	AFCD	Overall Height (metre)	Trunk Diameter (metre)	Crown Spread (metre)								
T465	TS-05	<i>Ficus hispida</i>	對葉榕		*	4	0.18	4	Fair	Poor	Low	Low	Fell	Affected by proposed works	-	unbalanced form
T466	TS-05	<i>Ficus hispida</i>	對葉榕		*	4	0.14	4	Fair	Poor	Low	Low	Fell	Affected by proposed works	-	unbalanced form
T467	TS-05	<i>Cinnamomum camphora</i>	樟	*		6	0.10	1	Poor	Poor	Low	Low	Retain	-	transplant in nursery, outside boundary	unbalanced form, vined
T468	TS-05	<i>Cinnamomum camphora</i>	樟	*		5	0.23	0	Fair	Poor	Low	Low	Retain	-	transplant in nursery, outside boundary	decapitated
T469	TS-05	Dead Tree	死樹	*		-	-	-	-	-	-	-	-	-	-	decapitated
T470	TS-05	<i>Cinnamomum camphora</i>	樟	*		7	0.11	1	Fair	Poor	Low	Low	Transplant	Affected by proposed works	transplant in nursery	-
T471	TS-05	<i>Aleurites moluccana</i>	石栗	*		10	0.33	3	Fair	Fair	High	Low	Transplant	Affected by proposed works	transplant in nursery	-
T472	TS-05	<i>Aleurites moluccana</i>	石栗	*		10	0.32	4	Fair	Fair	High	Low	Transplant	Affected by proposed works	transplant in nursery	-
T473	TS-05	Dead Tree	死樹	*		-	-	-	-	-	-	-	-	-	-	decapitated
T474	TS-05	Dead Tree	死樹	*		-	-	-	-	-	-	-	-	-	-	decapitated
T475	TS-05	<i>Aleurites moluccana</i>	石栗	*		5	0.11	0	Fair	Poor	Low	Low	Transplant	Affected by proposed works	transplant in nursery	-
T476	TS-05	Dead Tree	死樹	*		-	-	-	-	-	-	-	-	-	-	decapitated
T477	TS-05	<i>Aleurites moluccana</i>	石栗	*		7	0.11	2	Fair	Fair	High	Low	Transplant	Affected by proposed works	transplant in nursery	-
T478	TS-05	Dead Tree	死樹	*		-	-	-	-	-	-	-	-	-	-	decapitated
T479	TS-05	<i>Aleurites moluccana</i>	石栗	*		5	0.12	2	Fair	Fair	High	Low	Transplant	Affected by proposed works	transplant in nursery	-
T480	TS-05	<i>Aleurites moluccana</i>	石栗	*		6	0.11	2	Fair	Fair	High	Low	Transplant	Affected by proposed works	transplant in nursery	unbalanced form
T481	TS-05	<i>Aleurites moluccana</i>	石栗	*		10	0.25	4	Fair	Fair	High	Low	Transplant	Affected by proposed works	transplant in nursery	-
T482	TS-05	<i>Aleurites moluccana</i>	石栗	*		7	0.11	2	Fair	Fair	High	Low	Transplant	Affected by proposed works	transplant in nursery	-
T483	TS-05	<i>Aleurites moluccana</i>	石栗	*		4	0.11	2	Fair	Fair	High	Low	Transplant	Affected by proposed works	transplant in nursery	unbalanced form
T484	TS-05	<i>Aleurites moluccana</i>	石栗	*		12	0.25	4	Fair	Fair	High	Low	Transplant	Affected by proposed works	transplant in nursery	-
T485	TS-05	<i>Aleurites moluccana</i>	石栗	*		7	0.12	2	Fair	Fair	High	Low	Transplant	Affected by proposed works	transplant in nursery	-
T486	TS-05	<i>Aleurites moluccana</i>	石栗	*		11	0.27	4	Fair	Fair	High	Low	Transplant	Affected by proposed works	transplant in nursery	-
T487	TS-05	<i>Aleurites moluccana</i>	石栗	*		9	1.40	3	Fair	Fair	High	Low	Transplant	Affected by proposed works	transplant in nursery	-
T488	TS-05	<i>Aleurites moluccana</i>	石栗	*		4	0.10	2	Fair	Fair	High	Low	Transplant	Affected by proposed works	transplant in nursery	-
T489	TS-05	<i>Aleurites moluccana</i>	石栗	*		13	0.30	4	Fair	Fair	High	Low	Transplant	Affected by proposed works	transplant in nursery	-
T490	TS-05	<i>Aleurites moluccana</i>	石栗	*		6	0.11	2	Fair	Fair	High	Low	Transplant	Affected by proposed works	transplant in nursery	-
T491	TS-05	Dead Tree	死樹	*		-	-	-	-	-	-	-	-	-	-	decapitated
T492	TS-05	<i>Aleurites moluccana</i>	石栗	*		2	0.10	1	Poor	Poor	Low	Low	Transplant	Conflict with proposed maintenance access	transplant in nursery	unbalanced form
T493	TS-05	<i>Aleurites moluccana</i>	石栗	*		10	0.27	4	Fair	Fair	High	Low	Transplant	Conflict with proposed maintenance access	transplant in nursery	-
T494	TS-05	Dead Tree	死樹	*		-	-	-	-	-	-	-	-	-	-	decapitated
T495	TS-05	<i>Aleurites moluccana</i>	石栗	*		6	0.10	2	Fair	Fair	High	Low	Transplant	Affected by proposed works	transplant in nursery	-
T496	TS-05	Dead Tree	死樹	*		-	-	-	-	-	-	-	-	-	-	decapitated
T497	TS-05	<i>Aleurites moluccana</i>	石栗	*		14	0.30	4	Fair	Fair	High	Low	Transplant	Affected by proposed works	transplant in nursery	-
T498	TS-05	<i>Aleurites moluccana</i>	石栗	*		14	0.32	6	Fair	Fair	High	Low	Transplant	Affected by proposed works	transplant in nursery	-

TREE ASSESSMENT SCHEDULE

Revision No. (Date)

Revision A (January 2006)

Revision B (February 2006)

Job no.: 14898

Project Name: Yuen Long, Kam Tin, Ngau Tam Mei & Tin Shui Wai Drainage Improvement, Stage 1 Phase 2B - Kam Tin

Location : Sheu Wu Tong/ Kam Tsin Wai, Kam Tin (KT 15)				Plan Ref. No.: TS-05 to -06					Prepared By : EDAW Ltd.					Date of Report : September 2005		
(a)	(b)	(c)		(d)		(d)	(e)	(f)	(g)	(h)	(i)	(j)	(k)	(l)	(m)	(n)
Tree No.	Dwg. No.	Species		Jurisdiction		Size			Average Health (Good/Fair/Poor)	Form (Good/Fair/Poor)	Survival Rate After Transplanting (High/ Medium /Low)	Amenity Value (High/ Medium /Low)	Recommendation (Retain/ Transplant/ Fell)	Justification for Recommendation	Special Features	Remarks
		Botanical Name	Chinese Name	LCSD	AFCD	Overall Height (metre)	Trunk Diameter (metre)	Crown Spread (metre)								
T499	TS-05	<i>Aleurites moluccana</i>	石栗	*		6	0.10	2	Fair	Fair	High	Low	Transplant	Affected by proposed works	transplant in nursery	-
T500	TS-05	Dead Tree	死樹	*		-	-	-	-	-	-	-	-	-	-	decapitated
T501-T709	Numbers not used in this feature															
T710	TS-06	<i>Ficus microcarpa</i>	細葉榕	*		5	0.12	4	Fair	Fair	High	Medium	Transplant	Affected by proposed works	-	-
T711	TS-06	<i>Macaranga tanarius</i>	血桐	*		4	0.14	1	Poor	Poor	Low	Low	Retain	Not affected by proposed works	-	-
T712	TS-06	<i>Archontophoenix alexandrae</i>	假欖榔	*		10	0.21	3	Fair	Fair	High	Medium	Transplant	Affected by proposed works	-	-
T713	TS-06	<i>Ficus elastica</i>	印度榕	*		9	0.25	6	Fair	Fair	High	Medium	Transplant	Affected by proposed works	-	-
T714	TS-06	<i>Ficus elastica</i>	印度榕	*		9	0.40	6	Good	Fair	High	Medium	Transplant	Affected by proposed works	-	-
T715	TS-06	<i>Ficus elastica</i>	印度榕	*		4	0.16	4	Fair	Fair	High	Medium	Transplant	Affected by proposed works	-	-
T716	TS-06	<i>Ficus elastica</i>	印度榕	*		5	0.50	6	Fair	Fair	High	Medium	Transplant	Affected by proposed works	-	unbalanced form
T717	TS-06	<i>Archontophoenix alexandrae</i>	假欖榔	*		10	0.21	3	Fair	Fair	High	Medium	Transplant	Affected by proposed works	-	-
T718	TS-06	<i>Ficus microcarpa</i>	細葉榕		*	5	0.50	4	Fair	Fair	High	Medium	Retain	-	outside boundary	unbalanced form
T719	TS-06	<i>Ficus microcarpa</i>	細葉榕		*	10	0.40	5	Fair	Fair	High	Medium	Retain	-	outside boundary	-
T720	TS-06	<i>Ficus microcarpa</i>	細葉榕		*	10	0.35	6	Fair	Fair	High	Medium	Retain	-	outside boundary	unbalanced form
T721	TS-06	<i>Ficus microcarpa</i>	細葉榕		*	8	0.26	5	Fair	Fair	High	Medium	Retain	-	outside boundary	-
T722	TS-06	<i>Ficus microcarpa</i>	細葉榕		*	5	0.10	2	Fair	Fair	High	Medium	Transplant	Affected by proposed works	-	vined
T723	TS-06	<i>Ficus microcarpa</i>	細葉榕	*		2	0.17	3	Fair	Fair	High	Medium	Transplant	Affected by proposed works	-	vined
T724	TS-06	<i>Dimocarpus longan</i>	龍眼		*	3	0.10	3	Poor	Poor	Low	Low	Fell	Affected by proposed works	-	unbalanced form, root exposed, felled down
T725	TS-06	<i>Psidium guajava</i>	番石榴		*	3	0.20	3	Fair	Fair	Medium	Low	Retain	-	outside boundary	unbalanced form
T726	TS-06	<i>Macaranga tanarius</i>	血桐		*	3	0.12	4	Poor	Poor	Low	Low	Retain	-	outside boundary	vined, no leave
T727	TS-06	<i>Macaranga tanarius</i>	血桐		*	3	0.15	2	Fair	Fair	Medium	Low	Retain	Not affected by proposed works	-	unbalanced form
T728	TS-06	<i>Macaranga tanarius</i>	血桐		*	4	0.12	5	Fair	Fair	Medium	Low	Fell	Affected by proposed works	-	multi-trunked
T729	TS-06	<i>Celtis sinensis</i>	朴		*	9	0.32	5	Fair	Fair	Low	Medium	Retain	-	outside boundary	-
T730	TS-06	<i>Macaranga tanarius</i>	血桐		*	2	0.23	2	Poor	Poor	Low	Low	Retain	-	outside boundary	leaning, decapitated
T731	TS-06	<i>Dimocarpus longan</i>	龍眼		*	9	0.21	6	Fair	Fair	Medium	Low	Retain	-	outside boundary	forked
T732	TS-06	<i>Celtis sinensis</i>	朴		*	6	0.15	3	Fair	Poor	Low	Low	Retain	-	outside boundary	unbalanced form, no leave
T733	TS-06	<i>Clausena lansium</i>	黃皮		*	5	0.12	4	Fair	Fair	Medium	Low	Retain	Not affected by proposed works	-	-
T734	TS-06	<i>Carica papaya</i>	番木瓜		*	3	0.18	3	Fair	Fair	Low	Low	Fell	Affected by proposed works	-	-
T735	TS-06	<i>Eriobotrya japonica</i>	枇杷		*	4	0.12	3	Fair	Fair	Low	Low	Fell	Affected by proposed works	-	shrubby
T736	TS-06	<i>Dimocarpus longan</i>	龍眼		*	6	0.10	3	Fair	Fair	Medium	Medium	Transplant	Affected by proposed works	-	-
T737	TS-06	<i>Psidium guajava</i>	番石榴		*	7	0.16	4	Fair	Fair	Medium	Low	Fell	Affected by proposed works	-	shrubby
T738	TS-06	<i>Psidium guajava</i>	番石榴		*	3	0.14	4	Fair	Fair	Medium	Low	Retain	To preserve with tree ring	-	unbalanced form
T739	TS-06	<i>Psidium guajava</i>	番石榴		*	3	0.13	4	Fair	Fair	Medium	Low	Retain	Not affected by proposed works	-	forked

TREE ASSESSMENT SCHEDULE

Revision No. (Date)

Revision A (January 2006)

Revision B (February 2006)

Job no.: 14898

Project Name: Yuen Long, Kam Tin, Ngau Tam Mei & Tin Shui Wai Drainage Improvement, Stage 1 Phase 2B - Kam Tin

Location : Sheu Wu Tong/ Kam Tsin Wai, Kam Tin (KT 15)				Plan Ref. No.: TS-05 to -06					Prepared By : EDAW Ltd.					Date of Report : September 2005		
(a)	(b)	(c)		(d)		(d)	(e)	(f)	(g)	(h)	(i)	(j)	(k)	(l)	(m)	(n)
Tree No.	Dwg. No.	Species		Jurisdiction		Size			Average Health (Good/Fair/Poor)	Form (Good/Fair/Poor)	Survival Rate After Transplanting (High/ Medium /Low)	Amenity Value (High/ Medium /Low)	Recommendation (Retain/ Transplant/ Fell)	Justification for Recommendation	Special Features	Remarks
		Botanical Name	Chinese Name	LCSD	AFCD	Overall Height (metre)	Trunk Diameter (metre)	Crown Spread (metre)								
T740	TS-06	<i>Psidium guajava</i>	番石榴		*	3	0.12	3	Fair	Fair	Medium	Low	Retain	-	outside boundary	unbalanced form, forked
T741	TS-06	<i>Psidium guajava</i>	番石榴		*	5	0.22	6	Fair	Fair	Medium	Low	Retain	-	outside boundary	-
T742	Number not used in this feature															
T743	TS-05	<i>Cinnamomum camphora</i>	樟	*		6	0.13	2	Poor	Poor	Low	Low	Retain	-	transplant in nursery, outside boundary	unbalanced form, leaning, vined
T744	TS-05	<i>Leucaena leucocephala</i>	銀合歡	*		8	0.18	6	Fair	Fair	Low	Low	Retain	Not affected by proposed works	on slope	-
T745	TS-06	Dead Tree	死樹		*	9	0.54	0	-	-	-	-	Retain	-	outside boundary	-
T746	TS-06	<i>Dimocarpus longan</i>	龍眼		*	5	0.13	5	Fair	Poor	Low	Low	Retain	-	outside boundary	multi-trunked
T747	TS-06	<i>Ficus hispida</i>	對葉榕		*	5	0.22	4	Poor	Poor	Low	Low	Retain	-	outside boundary, at top of wall	unbalanced form, few leave
T748-T800	Numbers not used in this feature															
T801	TS-05	<i>Aleurites moluccana</i>	石栗	*		10	0.25	4	Fair	Fair	High	Medium	Transplant	Conflict with proposed maintenance access	-	-
T802	TS-05	<i>Acacia confusa</i>	台灣相思	*		5	0.20	5	Fair	Poor	Low	Low	Fell	Conflict with proposed maintenance access	-	unbalanced form, vined
T803	TS-05	<i>Melia azedarach</i>	楝	*		4	0.15	2	Poor	Poor	Low	Low	Fell	Conflict with proposed maintenance access	-	unbalanced form, vined
T804	TS-05	<i>Macaranga tanarius</i>	血桐	*		6	0.18	0	Fair	Poor	Low	Low	Fell	Conflict with proposed maintenance access	-	root exposed, unbalanced form
T805	TS-05	<i>Bombax ceiba</i>	木棉	*		7	0.23	3	Fair	Fair	High	Medium	Transplant	Conflict with proposed maintenance access	-	-
T806	TS-05	Dead Tree	死樹	*		-	-	-	-	-	-	-	-	-	-	decapitated
T807	TS-05	<i>Cassia siamea</i>	鐵刀木	*		4	0.20	2	Fair	Poor	Low	Low	Fell	Affected by proposed works	-	unbalanced form
T808	TS-05	<i>Cinnamomum camphora</i>	樟	*		5	0.11	3	Fair	Poor	Low	Low	Transplant	Affected by proposed works	transplant in nursery	decapitated
T809	TS-05	<i>Cassia siamea</i>	鐵刀木	*		3	0.10	0	Poor	Poor	Low	Low	Fell	Affected by proposed works	-	decapitated, multi-trunked
T810	TS-05	<i>Ficus hispida</i>	對葉榕		*	3	0.11	3	Fair	Poor	Low	Low	Retain	Not affected by proposed works	-	unbalanced form, forked
T811	TS-05	<i>Ficus hispida</i>	對葉榕		*	4	0.12	3	Poor	Poor	Low	Low	Retain	Not affected by proposed works	-	few leave, forked, unbalanced form
T812	TS-05	Unidentified	-		*	4	0.25	0	Poor	Poor	Low	Low	Retain	Not affected by proposed works	-	forked, decapitated, root exposed, no leave
T813	TS-05	<i>Bauhinia</i> sp.	羊蹄甲屬		*	2	0.15	1	Fair	Poor	Low	Low	Retain	Not affected by proposed works	-	unbalanced form
T814	TS-05	<i>Cassia siamea</i>	鐵刀木		*	7	0.43	5	Fair	Fair	High	Low	Retain	Not affected by proposed works	-	unbalanced form
T815	TS-05	<i>Cinnamomum camphora</i>	樟		*	3	0.24	0	Fair	Poor	Low	Low	Fell	Affected by proposed works	-	decapitated
T816	TS-05	Dead Tree	死樹	*		-	-	-	-	-	-	-	-	-	-	decapitated
T817	TS-05	Dead Tree	死樹	*		-	-	-	-	-	-	-	-	-	-	decapitated
T818	TS-05	<i>Cinnamomum camphora</i>	樟	*		3	0.23	0	Fair	Poor	Low	Low	Transplant	Affected by proposed works	transplant in nursery	-
T819	TS-05	<i>Cinnamomum camphora</i>	樟	*		4	0.27	0	Fair	Poor	Low	Low	Transplant	Conflict with proposed maintenance access	transplant in nursery	-
T820	TS-05	<i>Cinnamomum camphora</i>	樟	*		10	0.35	4	Fair	Fair	Low	Low	Transplant	Conflict with proposed maintenance access	transplant in nursery	-
T821	TS-05	<i>Cinnamomum camphora</i>	樟	*		6	0.17	3	Fair	Poor	Low	Low	Transplant	Conflict with proposed maintenance access	transplant in nursery	unbalanced form
T822	TS-05	Dead Tree	死樹	*		-	-	-	-	-	-	-	-	-	-	decapitated
T823	TS-05	Dead Tree	死樹	*		-	-	-	-	-	-	-	-	-	-	decapitated

TREE ASSESSMENT SCHEDULE

Revision No. (Date)

Revision A (January 2006)

Revision B (February 2006)

Job no.: 14898

Project Name: Yuen Long, Kam Tin, Ngau Tam Mei & Tin Shui Wai Drainage Improvement, Stage 1 Phase 2B - Kam Tin

Location : Sheu Wu Tong/ Kam Tsin Wai, Kam Tin (KT 15)				Plan Ref. No.: TS-05 to -06					Prepared By : EDAW Ltd.					Date of Report : September 2005		
(a)	(b)	(c)		(d)		(d)	(e)	(f)	(g)	(h)	(i)	(j)	(k)	(l)	(m)	(n)
Tree No.	Dwg. No.	Species		Jurisdiction		Size			Average Health (Good/Fair/Poor)	Form (Good/Fair/Poor)	Survival Rate After Transplanting (High/ Medium /Low)	Amenity Value (High/ Medium /Low)	Recommendation (Retain/ Transplant/ Fell)	Justification for Recommendation	Special Features	Remarks
		Botanical Name	Chinese Name	LCSD	AFCD	Overall Height (metre)	Trunk Diameter (metre)	Crown Spread (metre)								
T824	TS-05	<i>Cinnamomum camphora</i>	樟	*		4	0.13	2	Poor	Poor	Low	Low	Transplant	Conflict with proposed maintenance access	transplant in nursery	unbalanced form, vined
T825	TS-05	<i>Cinnamomum camphora</i>	樟		*	4	0.32	0	Fair	Poor	Low	Low	Fell	Affected by proposed works	-	decapitated
T826	TS-05	<i>Cinnamomum camphora</i>	樟	*		6	0.10	1	Fair	Poor	Low	Low	Transplant	Affected by proposed works	transplant in nursery	-
T827	TS-05	Dead Tree	死樹	*		-	-	-	-	-	-	-	-	-	-	decapitated
T828	TS-05	Dead Tree	死樹	*		-	-	-	-	-	-	-	-	-	-	decapitated
T829	TS-05	Dead Tree	死樹	*		-	-	-	-	-	-	-	-	-	-	decapitated
T830	TS-05	Dead Tree	死樹	*		-	-	-	-	-	-	-	-	-	-	decapitated
T831	TS-05	<i>Cinnamomum camphora</i>	樟	*		4	0.24	0	Fair	Poor	Low	Low	Transplant	Affected by proposed works	transplant in nursery	-
T832	TS-05	Dead Tree	死樹	*		-	-	-	-	-	-	-	-	-	-	decapitated
T833	TS-05	Dead Tree	死樹	*		-	-	-	-	-	-	-	-	-	-	decapitated
T834	TS-05	Dead Tree	死樹	*		-	-	-	-	-	-	-	-	-	-	decapitated
T835	TS-05	<i>Cinnamomum camphora</i>	樟	*		10	0.32	4	Fair	Fair	Low	Low	Transplant	Affected by proposed works	transplant in nursery	-
T836	TS-05	Dead Tree	死樹	*		-	-	-	-	-	-	-	-	-	-	decapitated
T837	TS-05	Dead Tree	死樹	*		-	-	-	-	-	-	-	-	-	-	decapitated
T838	TS-05	Dead Tree	死樹	*		-	-	-	-	-	-	-	-	-	-	decapitated
T839	TS-05	<i>Cinnamomum camphora</i>	樟		*	5	0.11	1	Fair	Poor	Low	Low	Fell	Affected by proposed works	-	-
T840	TS-05	<i>Cinnamomum camphora</i>	樟		*	4	0.10	0	Fair	Poor	Low	Low	Fell	Affected by proposed works	-	decapitated
T841	TS-05	<i>Celtis sinensis</i>	朴		*	7	0.20	2	Fair	Poor	Low	Low	Fell	Affected by proposed works	-	unbalanced form
T842	TS-05	<i>Celtis sinensis</i>	朴		*	6	0.52	4	Fair	Fair	Low	Low	Fell	Affected by proposed works	-	-
T843	TS-05	<i>Cinnamomum camphora</i>	樟		*	4	0.11	1	Fair	Poor	Low	Low	Fell	Affected by proposed works	-	-
T844	TS-05	<i>Cinnamomum camphora</i>	樟		*	5	0.13	1	Fair	Poor	Low	Low	Fell	Affected by proposed works	-	-
T845	TS-05	<i>Cassia siamea</i>	鐵刀木		*	10	0.32	3	Fair	Fair	High	Low	Transplant	Conflict with proposed maintenance access	transplant in nursery	-
T846	TS-05	<i>Cassia siamea</i>	鐵刀木		*	10	0.34	4	Fair	Fair	High	Medium	Transplant	Affected by proposed works	-	-
T847	TS-05	<i>Cassia siamea</i>	鐵刀木		*	8	0.23	3	Fair	Poor	Low	Low	Fell	Affected by proposed works	twisted with T848	unbalanced form
T848	TS-05	<i>Cassia siamea</i>	鐵刀木		*		0.25	4	Fair	Poor	Low	Low	Fell	Affected by proposed works	twisted with T847	unbalanced form
T849	TS-05	<i>Carica papaya</i>	番木瓜		*	4	0.10	1	Fair	Fair	Low	Low	Retain	-	outside boundary	-
T850	TS-05	<i>Bischofia javanica</i>	秋楓		*	8	0.27	4	Fair	Fair	Medium	Medium	Transplant	Affected by proposed works	-	-
T851	TS-05	<i>Archontophoenix alexandrae</i>	假檳榔		*	4	0.11	3	Fair	Fair	High	Low	Retain	Not affected by proposed works	-	-
T852	TS-05	<i>Macaranga tanarius</i>	血桐		*	1	0.10	0	Poor	Poor	Low	Low	Fell	Affected by proposed works	-	decapitated
T853	TS-05	<i>Morus alba</i>	桑		*	4	0.10	4	Fair	Fair	Low	Medium	Transplant	Affected by proposed works	-	vined
T854	TS-05	<i>Ficus hispida</i>	對葉榕		*	5	0.20	6	Fair	Fair	High	Low	Fell	Affected by proposed works	-	multi-trunked
T855	TS-05	<i>Macaranga tanarius</i>	血桐		*	5	0.21	6	Fair	Poor	Low	Low	Retain	-	outside boundary	multi-trunked
T856	TS-05	<i>Dimocarpus longan</i>	龍眼		*	8	0.33	4	Fair	Fair	Medium	Medium	Transplant	Affected by proposed works	-	-
T857	TS-05	<i>Macaranga tanarius</i>	血桐		*	4	0.20	4	Fair	Fair	Medium	Low	Retain	Not affected by proposed works	-	-

TREE ASSESSMENT SCHEDULE

Revision No. (Date)

Revision A (January 2006)

Revision B (February 2006)

Job no.: 14898

Project Name: Yuen Long, Kam Tin, Ngau Tam Mei & Tin Shui Wai Drainage Improvement, Stage 1 Phase 2B - Kam Tin

Location : Sheu Wu Tong/ Kam Tsin Wai, Kam Tin (KT 15)				Plan Ref. No.: TS-05 to -06				Prepared By : EDAW Ltd.					Date of Report : September 2005			
(a)	(b)	(c)		(d)		(d)	(e)	(f)	(g)	(h)	(i)	(j)	(k)	(l)	(m)	(n)
Tree No.	Dwg. No.	Species		Jurisdiction		Size			Average Health (Good/Fair/Poor)	Form (Good/Fair/Poor)	Survival Rate After Transplanting (High/ Medium /Low)	Amenity Value (High/ Medium /Low)	Recommendation (Retain/ Transplant/ Fell)	Justification for Recommendation	Special Features	Remarks
		Botanical Name	Chinese Name	LCSD	AFCD	Overall Height (metre)	Trunk Diameter (metre)	Crown Spread (metre)								
T858	TS-05	<i>Litsea glutinosa</i>	潺稿樹		*	4	0.23	3	Fair	Fair	Low	Low	Retain	-	outside boundary	unbalanced form
T859	TS-05	<i>Artocarpus macrocarpus</i>	波羅蜜		*	5	0.10	3	Fair	Fair	Medium	Low	Transplant	Affected by proposed works	-	-
T860	TS-05	<i>Artocarpus macrocarpus</i>	波羅蜜		*	5	0.11	2	Fair	Fair	Medium	Low	Transplant	Affected by proposed works	-	-
T861	TS-05	<i>Artocarpus macrocarpus</i>	波羅蜜		*	5	0.11	2	Fair	Fair	Medium	Low	Transplant	Affected by proposed works	-	-
T862	TS-05	<i>Artocarpus macrocarpus</i>	波羅蜜		*	5	0.10	2	Fair	Fair	Medium	Low	Transplant	Affected by proposed works	-	-
T863	TS-05	<i>Artocarpus macrocarpus</i>	波羅蜜		*	5	0.10	2	Fair	Fair	Medium	Low	Transplant	Affected by proposed works	-	-
T864	TS-05	<i>Artocarpus macrocarpus</i>	波羅蜜		*	5	0.12	2	Fair	Fair	Medium	Low	Transplant	Affected by proposed works	-	-
T865	TS-05	<i>Artocarpus macrocarpus</i>	波羅蜜		*	5	0.11	2	Fair	Fair	Medium	Low	Transplant	Affected by proposed works	-	-
T866	TS-05	<i>Artocarpus macrocarpus</i>	波羅蜜		*	4	0.10	2	Fair	Fair	Medium	Low	Transplant	Affected by proposed works	-	-
T867	TS-05	<i>Dimocarpus longan</i>	龍眼		*	6	0.27	5	Fair	Fair	Medium	Medium	Transplant	Affected by proposed works	-	-
T868	TS-05	<i>Artocarpus macrocarpus</i>	波羅蜜		*	5	0.10	2	Fair	Fair	Medium	Low	Retain	Not affected by proposed works	-	-
T869	TS-05	<i>Artocarpus macrocarpus</i>	波羅蜜		*	5	0.13	2	Fair	Fair	Medium	Low	Retain	Not affected by proposed works	-	-
T870	TS-05	<i>Ligustrum sinense</i>	山指甲		*	5	0.12	4	Fair	Fair	Low	Medium	Transplant	Affected by proposed works	-	-
T871	TS-05	<i>Ficus hispida</i>	對葉榕		*	4	0.13	4	Fair	Fair	High	Low	Retain	-	outside boundary	unbalanced form
T872	TS-05	<i>Ficus hispida</i>	對葉榕		*	4	0.13	4	Fair	Fair	High	Low	Retain	-	outside boundary	unbalanced form
T873	TS-05	<i>Ficus hispida</i>	對葉榕		*	4	0.14	4	Fair	Fair	High	Low	Retain	-	outside boundary	unbalanced form
T874	TS-05	<i>Ficus hispida</i>	對葉榕		*	4	0.14	4	Poor	Poor	Low	Low	Retain	-	outside boundary	unbalanced form
T875	TS-05	<i>Macaranga tanarius</i>	血桐		*	4	0.12	4	Fair	Fair	Medium	Low	Retain	Not affected by proposed works	-	unbalanced form
T876	TS-05	<i>Dimocarpus longan</i>	龍眼		*	7	0.52	6	Good	Fair	Medium	Low	Retain	Not affected by proposed works	-	-
T877	TS-05	<i>Ficus microcarpa</i>	細葉榕		*	5	0.11	4	Fair	Fair	High	Low	Retain	-	outside boundary	vined
T878	TS-05	<i>Dimocarpus longan</i>	龍眼		*	7	0.32	6	Fair	Fair	Medium	Medium	Retain	To preserve with tree well	-	-
T879	TS-05	<i>Macaranga tanarius</i>	血桐		*	5	0.13	5	Fair	Fair	Medium	Low	Fell	Affected by proposed works	-	multi-trunked
T880	TS-05	<i>Melia azedarach</i>	楝		*	7	0.42	4	Fair	Fair	Medium	Medium	Transplant	Affected by proposed works	-	-
T881	TS-05	<i>Dimocarpus longan</i>	龍眼		*	12	0.55	5	Good	Good	Low	High	Retain	To preserve with tree ring	-	mature
T882	TS-05	<i>Dimocarpus longan</i>	龍眼		*	12	0.72	8	Good	Good	Low	High	Retain	-	outside boundary	mature
T883	TS-05	<i>Celtis sinensis</i>	朴		*	8	0.45	5	Fair	Fair	Low	Medium	Transplant	Affected by proposed works	-	-
T884	TS-05	<i>Averrhoa carambola</i>	楊桃		*	4	0.24	4	Fair	Fair	Medium	Medium	Retain	-	outside boundary	-
T885	TS-05	<i>Clausena lansium</i>	黃皮		*	5	0.18	4	Fair	Fair	Medium	Low	Retain	-	outside boundary	-
T886	TS-05	<i>Clausena lansium</i>	黃皮		*	5	0.29	4	Fair	Fair	Medium	Low	Retain	-	outside boundary	-
T887	TS-05	<i>Artocarpus macrocarpus</i>	波羅蜜		*	4	0.10	3	Fair	Fair	Medium	Low	Retain	-	outside boundary	-
T888	TS-05	<i>Dimocarpus longan</i>	龍眼		*	10	0.35	6	Fair	Fair	Medium	Medium	Retain	Not affected by proposed works	-	-
T889	TS-05	<i>Macaranga tanarius</i>	血桐		*	4	0.21	7	Fair	Fair	Medium	Low	Retain	Not affected by proposed works	-	unbalanced form
T890	TS-05	<i>Ficus microcarpa</i>	細葉榕		*	5	0.16	4	Fair	Fair	High	Medium	Transplant	Affected by proposed works	-	-
T891	TS-05	<i>Ficus microcarpa</i>	細葉榕		*	5	0.13	4	Fair	Fair	High	Medium	Transplant	Conflict with proposed maintenance access	-	-

TREE ASSESSMENT SCHEDULE

Revision No. (Date)

Revsion A (January 2006)

Revsion B (February 2006)

Job no.: 14898

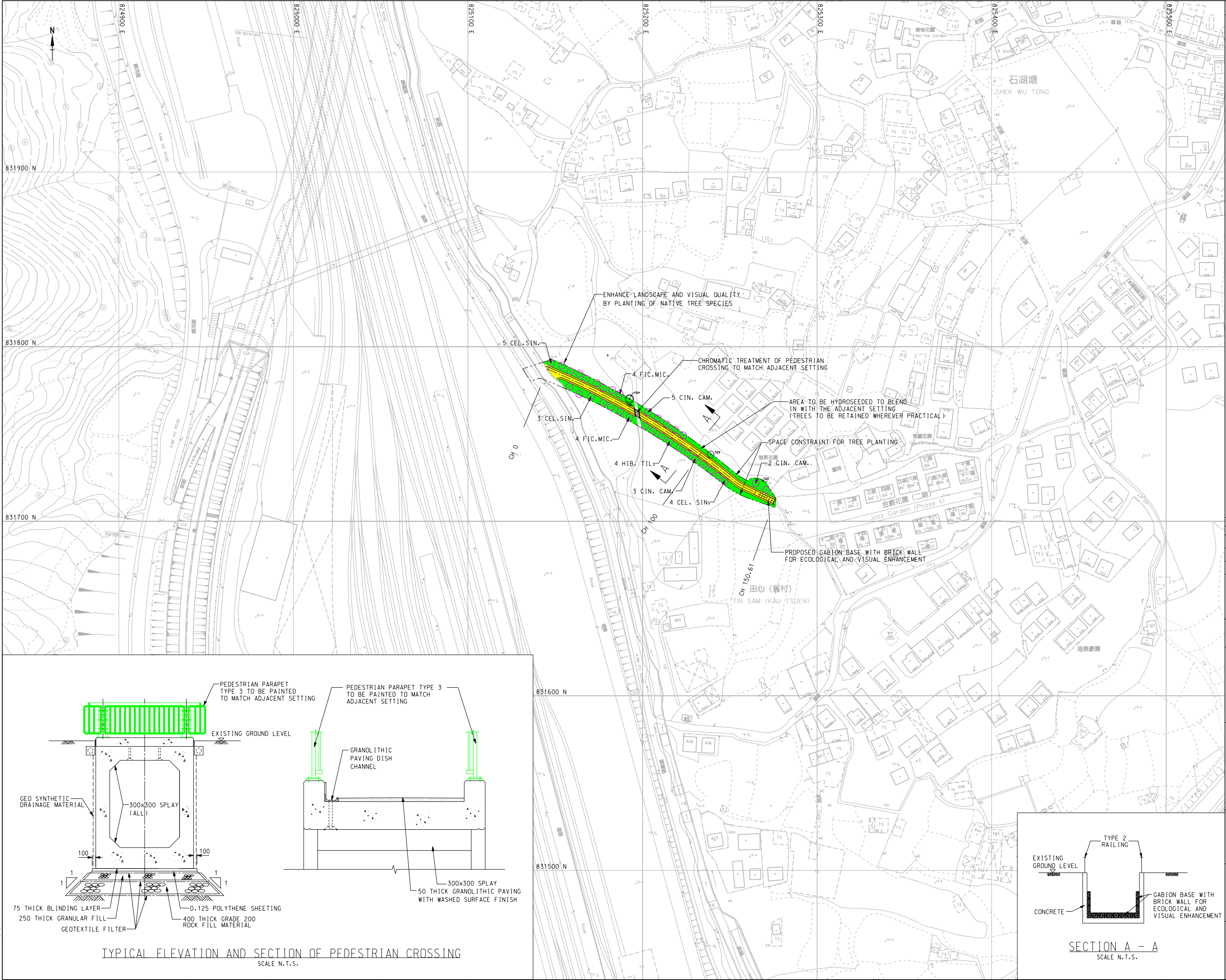
Project Name: Yuen Long, Kam Tin, Ngau Tam Mei & Tin Shui Wai Drainage Improvement, Stage 1 Phase 2B - Kam Tin

Location : Sheu Wu Tong/ Kam Tsin Wai, Kam Tin (KT 15)				Plan Ref. No.: TS-05 to -06					Prepared By : EDAW Ltd.					Date of Report : September 2005		
(a)	(b)	(c)		(d)		(d)	(e)	(f)	(g)	(h)	(i)	(j)	(k)	(l)	(m)	(n)
Tree No.	Dwg. No.	Species		Jurisdiction		Size			Average Health (Good/Fair/Poor)	Form (Good/Fair/Poor)	Survival Rate After Transplanting (High/ Medium /Low)	Amenity Value (High/ Medium /Low)	Recommend-ation (Retain/ Transplant/ Fell)	Justification for Recommendation	Special Features	Remarks
		Botanical Name	Chinese Name	LCSD	AFCD	Overall Height (metre)	Trunk Diameter (metre)	Crown Spread (metre)								
T892	TS-05	<i>Ficus microcarpa</i>	細葉榕		*	6	0.15	4	Fair	Fair	High	Low	Retain	Not affected by proposed works	-	-
T893	TS-05	<i>Ficus microcarpa</i>	細葉榕		*	6	0.13	4	Fair	Fair	High	Low	Retain	Not affected by proposed works	-	-
T894	TS-05	<i>Ficus microcarpa</i>	細葉榕		*	6	0.16	4	Fair	Fair	High	Low	Retain	-	outside boundary	-
T895	TS-05	<i>Macaranga tanarius</i>	血桐		*	3	0.10	4	Fair	Fair	Medium	Low	Retain	Not affected by proposed works	-	-
T896	TS-05	<i>Ficus microcarpa</i>	細葉榕		*	6	0.13	4	Fair	Fair	Low	Low	Fell	Affected by proposed works	Wall Tree	-
T897	TS-05	<i>Macaranga tanarius</i>	血桐		*	5	0.10	2	Fair	Fair	Medium	Low	Fell	Affected by proposed works	-	forked, unbalanced form
T898	TS-05	<i>Macaranga tanarius</i>	血桐		*	6	0.11	5	Fair	Fair	Medium	Low	Fell	Affected by proposed works	-	forked, unbalanced form
T899	TS-05	<i>Macaranga tanarius</i>	血桐		*	6	0.13	5	Fair	Fair	Medium	Low	Fell	Affected by proposed works	-	-
T900	TS-05	<i>Macaranga tanarius</i>	血桐	*		6	0.21	7	Fair	Fair	Medium	Medium	Transplant	Affected by proposed works	-	unbalanced form, multi-trunked
T901	TS-05	<i>Macaranga tanarius</i>	血桐	*		7	0.16	5	Fair	Fair	Medium	Medium	Transplant	Affected by proposed works	-	-
T902	TS-05	<i>Macaranga tanarius</i>	血桐	*		7	0.17	5	Fair	Fair	Medium	Medium	Transplant	Affected by proposed works	-	forked
T903	TS-05	<i>Ficus microcarpa</i>	細葉榕	*		7	0.13	4	Fair	Fair	High	Medium	Transplant	Affected by proposed works	-	-
T904	TS-05	<i>Ficus microcarpa</i>	細葉榕	*		9	0.19	5	Fair	Fair	High	Medium	Transplant	Affected by proposed works	-	-
T905	TS-05	<i>Bridelia tomentosa</i>	土蜜樹		*	4	0.10	4	Fair	Fair	Low	Low	Retain	-	outside boundary	unbalanced form
T906	TS-05	<i>Ficus microcarpa</i>	細葉榕		*	6	0.13	4	Fair	Fair	High	Medium	Transplant	Conflict with proposed maintenance access	-	-
T907	TS-05	<i>Celtis sinensis</i>	朴		*	6	0.13	4	Fair	Fair	Low	Low	Fell	Affected by proposed works	-	unbalanced form
T908	TS-05	<i>Celtis sinensis</i>	朴		*	6	0.14	4	Fair	Fair	Low	Low	Fell	Affected by proposed works	-	unbalanced form, forked
T909	TS-05	<i>Ficus microcarpa</i>	細葉榕		*	7	0.22	5	Fair	Fair	High	Medium	Transplant	Affected by proposed works	-	-
T910	TS-05	<i>Ficus microcarpa</i>	細葉榕		*	8	0.18	5	Fair	Fair	High	Medium	Transplant	Conflict with proposed maintenance access	-	unbalanced form
T911	TS-05	<i>Ficus microcarpa</i>	細葉榕	*		8	0.25	5	Fair	Fair	High	Medium	Transplant	Affected by proposed works	-	-
T912	TS-05	<i>Celtis sinensis</i>	朴		*	5	0.13	4	Fair	Fair	Low	Medium	Transplant	Affected by proposed works	-	-
T913	TS-05	<i>Melia azedarach</i>	楝	*		8	0.35	7	Fair	Fair	Medium	Medium	Transplant	Affected by proposed works	-	forked
T914	TS-05	<i>Macaranga tanarius</i>	血桐	*		6	0.25	5	Fair	Fair	Medium	Medium	Transplant	Affected by proposed works	-	unbalanced form, multi-trunked
T915	TS-05	<i>Khaya senegalensis</i>	非洲楝	*		9	0.30	5	Fair	Fair	Medium	Medium	Transplant	Conflict with proposed maintenance access	-	unbalanced form
T916	TS-05	<i>Ficus microcarpa</i>	細葉榕	*		5	0.21	4	Fair	Fair	High	Medium	Retain	Not affected by proposed works	-	-
T917	TS-05	<i>Ficus microcarpa</i>	細葉榕	*		7	0.31	5	Fair	Fair	High	Medium	Transplant	Affected by proposed works	-	-
T918	TS-06	<i>Ficus microcarpa</i>	細葉榕	*		2	0.12	0	Fair	Poor	High	Medium	Transplant	Affected by proposed works	-	-
T919	TS-06	<i>Ficus microcarpa</i>	細葉榕		*	3	0.31	2	Fair	Poor	High	Medium	Transplant	Conflict with proposed maintenance access	-	-

Note: The jurisdiction is determined in accordance with Environment, Transport and Works Bureau Technical Circular No.14/2002 for confirmation by relevant departments.



Plot Date = 3/8/2007



© Copyright by Black & Veatch Hong Kong Limited and Government of HKSAR

LEGEND :

- WORKS BOUNDARY
- PROPOSED HYDROSEEDING AREA
- PROPOSED GABION BASE
- PROPOSED PEDESTRIAN BRIDGE
- TREE PROPOSED TO BE RETAINED
- PROPOSED HEAVY STANDARD TREE

Revision	Date	GENERAL REVISION			Initial
		Designed	Checked	Drawn	
Initial	BW	JT	SC	JT	JT
Date	8/05	8/05	8/05	8/05	8/05
Approved					

AGREEMENT NO. CE 67/98

Contract title

YUEN LONG, KAM TIN, NGAU TAM MEI AND TIN SHUI WAI DRAINAGE IMPROVEMENT, STAGE 1, PHASE 2B – KAM TIN

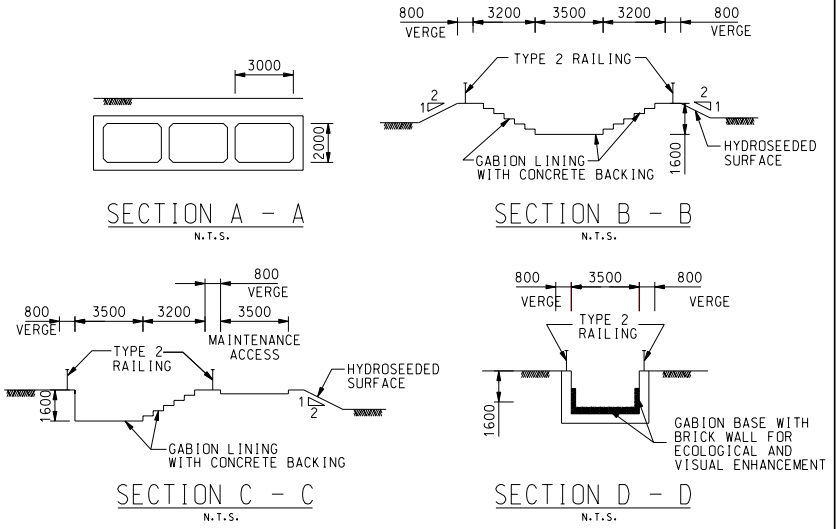
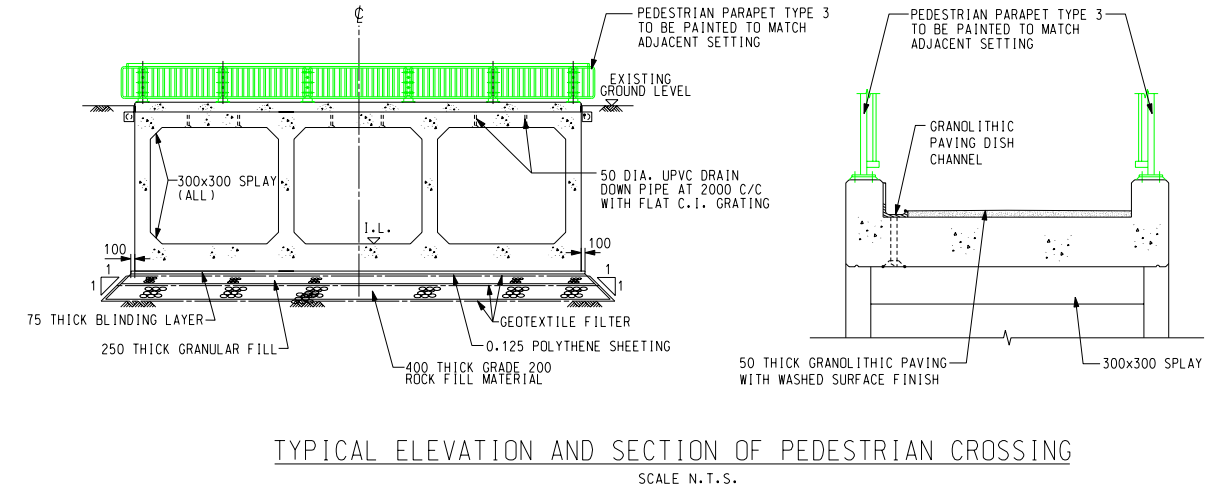
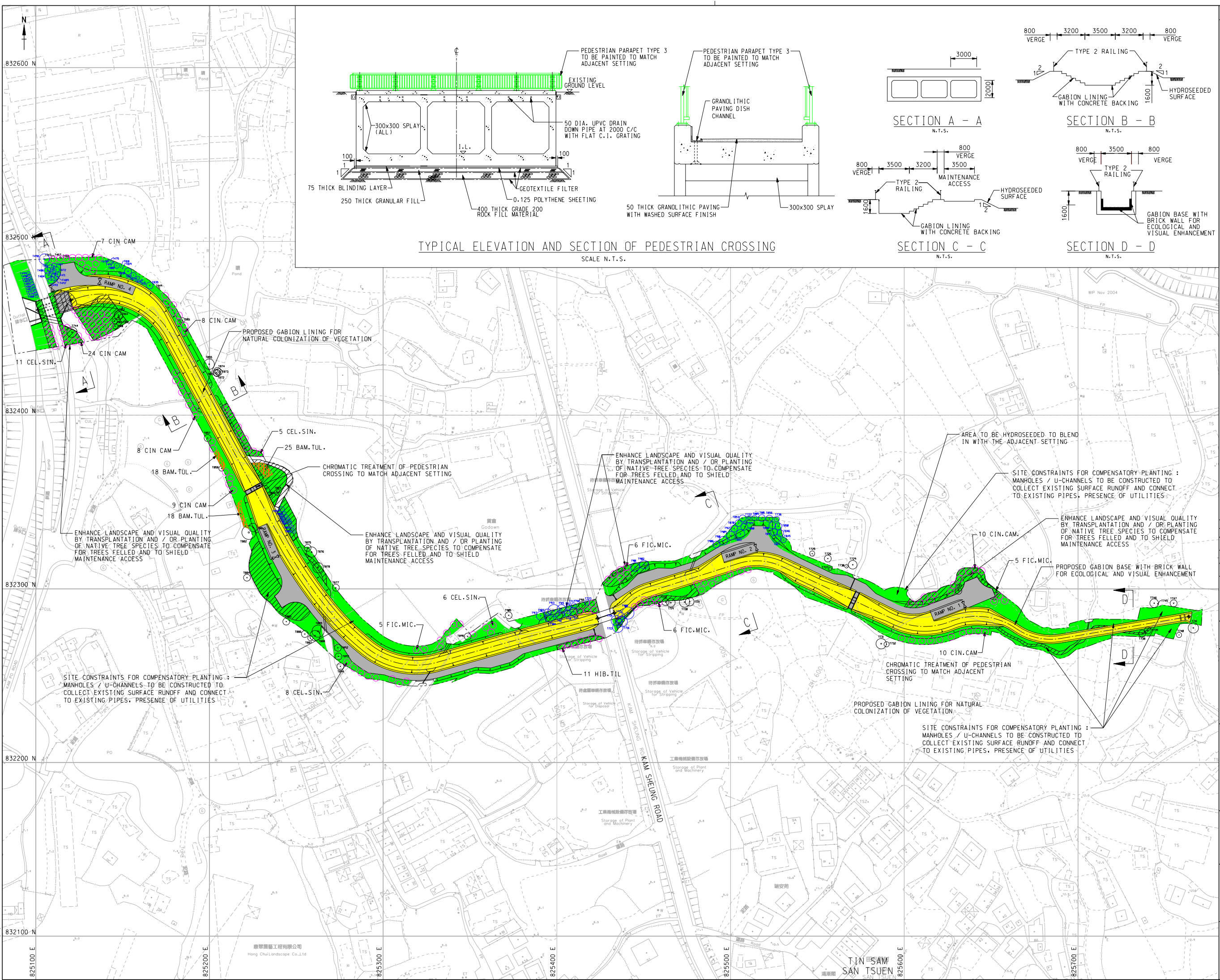
Drawing title

LANDSCAPE PLAN FOR PROPOSED CHANNEL – KT14

Drawing no.	Scale
LP-01	1:2000 A3







© Copyright by Black & Veatch Hong Kong Limited and Government of HKSAR

LEGEND :

- WORKS BOUNDARY
- PROPOSED HYDROSEEDING AND LANDSCAPE PLANTING AREA
- PROPOSED GABION BASE
- PROPOSED PEDESTRIAN BRIDGE/ MAINTENANCE ACCESS ROAD
- AREA TO BE FILLED TO ADJACENT GROUND LEVEL
- PROPOSED LOCATION FOR TRANSPLANTED TREE
- TREE PROPOSED TO BE RETAINED
- PROPOSED HEAVY STANDARD TREE
- BAMBOO PLANTING AREA

A	FEB06	GENERAL REVISION			KIL
Revision	Date	Description			Initial
	Designed	Checked	Drawn	Verified	
Initial	TW	KIL	HKF	KIL	
Date	8/05	8/05	8/05	8/05	
Approved					

AGREEMENT NO. CE 67/98

Contract title

YUEN LONG, KAM TIN, NGAU TAM MEI AND TIN SHUI WAI DRAINAGE IMPROVEMENT, STAGE 1, PHASE 2B - KAM TIN

LANDSCAPE PLAN FOR PROPOSED CHANNEL - KT15

Drawing no.	Scale
LP-02	1:2000 A3

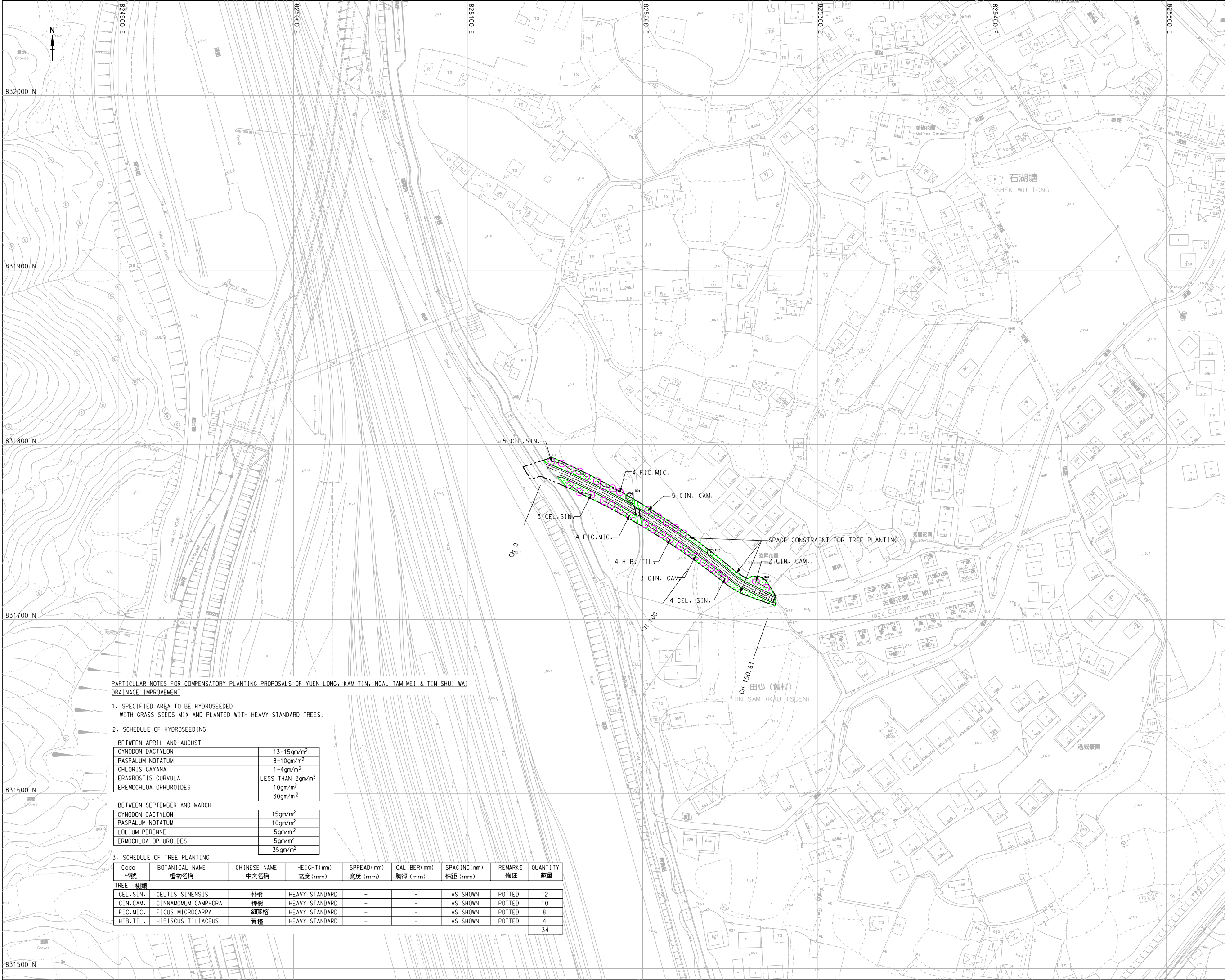
香港特別行政區政府渠務署  
THE GOVERNMENT OF THE HONG KONG  
SPECIAL ADMINISTRATIVE REGION  
DRAINAGE SERVICES DEPARTMENT

BLACK & VEATCH HONG KONG LIMITED  
博威工程顧問有限公司

Plot Date = 3/8/2007



Plot Date = 3/8/2007



PARTICULAR NOTES FOR COMPENSATORY PLANTING PROPOSALS OF YUEN LONG, KAM TIN, NGAU TAM MEI & TIN SHUI WAI DRAINAGE IMPROVEMENT

1. SPECIFIED AREA TO BE HYDROSEEDED WITH GRASS SEEDS MIX AND PLANTED WITH HEAVY STANDARD TREES.

2. SCHEDULE OF HYDROSEEDING

BETWEEN APRIL AND AUGUST	
CYNODON DACTYLON	13-15gm/m <sup>2</sup>
PASPALUM NOTATUM	8-10gm/m <sup>2</sup>
CHLORIS GAYANA	1-4gm/m <sup>2</sup>
ERAGROSTIS CURVULA	LESS THAN 2gm/m <sup>2</sup>
EREMOCHLOA OPHUROIDES	10gm/m <sup>2</sup>
	30gm/m <sup>2</sup>

BETWEEN SEPTEMBER AND MARCH	
CYNODON DACTYLON	15gm/m <sup>2</sup>
PASPALUM NOTATUM	10gm/m <sup>2</sup>
LOLIUM PERENNE	5gm/m <sup>2</sup>
ERMOCHLOA OPHUROIDES	5gm/m <sup>2</sup>
	35gm/m <sup>2</sup>

3. SCHEDULE OF TREE PLANTING

Code 代號	BOTANICAL NAME 植物名稱	CHINESE NAME 中文名稱	HEIGHT(mm) 高度 (mm)	SPREAD(mm) 寬度 (mm)	CAL IBER(mm) 胸徑 (mm)	SPACING(mm) 株距 (mm)	REMARKS 備註	QUANTITY 數量
TREE 樹類								
CEL.SIN.	CELTIS SINENSIS	朴樹	HEAVY STANDARD	-	-	AS SHOWN	POTTED	12
CIN.CAM.	CINNAMOMUM CAMPHORA	樟樹	HEAVY STANDARD	-	-	AS SHOWN	POTTED	10
FIC.MIC.	FICUS MICROCARPA	細葉榕	HEAVY STANDARD	-	-	AS SHOWN	POTTED	8
HIB.TIL.	HIBISCUS TILIACEUS	黃槿	HEAVY STANDARD	-	-	AS SHOWN	POTTED	4
								34

© Copyright by Black & Veatch Hong Kong Limited and Government of HKSAR

NOTES :

1. GRID LINES ARE HONG KONG METRIC GRID 1980.
2. THE LOCATION OF THE TREES ARE INDICATIVE THE EXACT LOCATION SHALL BE DETERMINED ON SITE.
3. SUPPLY OF WATER TO ESTABLISH THE PLANTS SHALL BE PROVIDED BY THE CONTRACTOR AND ENTITLED AT THE EXPENSE OF THE CONTRACTOR.

LEGEND :

- TREE PROPOSED TO BE RETAINED
- PROPOSED HEAVY STANDARD TREE
- WORKS BOUNDARY
- HYDROSEEDING AREA

Revision	Date	Description			Initial
	Designed	Checked	Drawn	Verified	
Initial	BW	JT	SC	JT	
Date	8/05	8/05	8/05	8/05	
Approved					

AGREEMENT NO. CE 67/98

Contract title

YUEN LONG, KAM TIN,  
NGAU TAM MEI AND TIN SHUI WAI  
DRAINAGE IMPROVEMENT, STAGE 1,  
PHASE 2B – KAM TIN

Drawing title

COMPENSATORY PLANTING  
PROPOSAL FOR  
PROPOSED CHANNEL – KT14A

Drawing no.

CP-14A

Scale

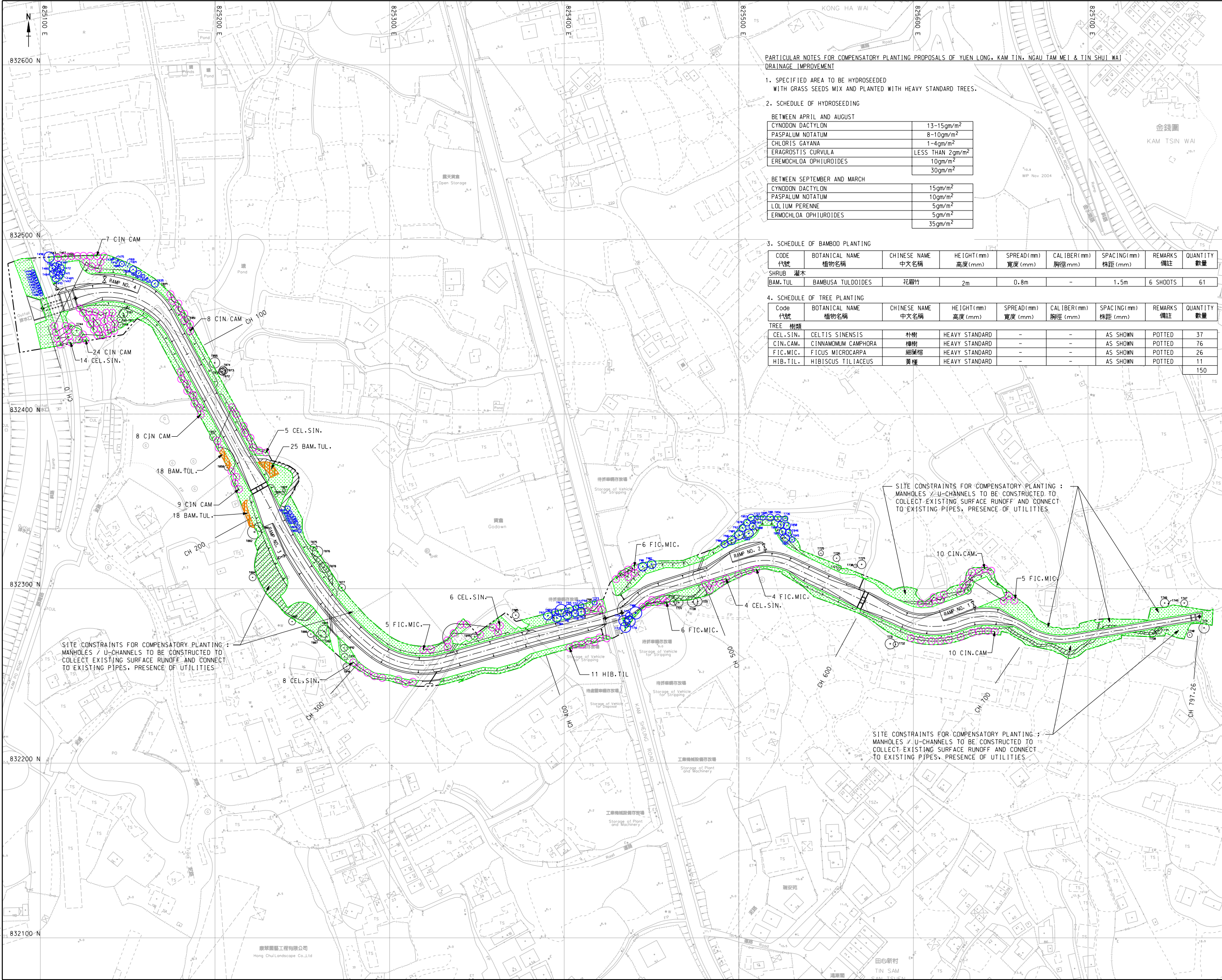
1:2000 A3

香港特別行政區政府渠務署  
THE GOVERNMENT OF THE  
HONG KONG  
SPECIAL ADMINISTRATIVE REGION  
DRAINAGE SERVICES DEPARTMENT

BLACK & VEATCH HONG KONG LIMITED  
博威工程顧問有限公司



Plot Date = 3/8/2007



PARTICULAR NOTES FOR COMPENSATORY PLANTING PROPOSALS OF YUEN LONG, KAM TIN, NGAU TAM MEI & TIN SHUI WAI DRAINAGE IMPROVEMENT

1. SPECIFIED AREA TO BE HYDROSEEDING WITH GRASS SEEDS MIX AND PLANTED WITH HEAVY STANDARD TREES.

2. SCHEDULE OF HYDROSEEDING

BETWEEN APRIL AND AUGUST	
CYNODON DACTYLON	13-15gm/m <sup>2</sup>
PASPALUM NOTATUM	8-10gm/m <sup>2</sup>
CHLORIS GAYANA	1-4gm/m <sup>2</sup>
ERAGROSTIS CURVULA	LESS THAN 2gm/m <sup>2</sup>
EREMOCHLOA OPHIUROIDES	10gm/m <sup>2</sup>
	30gm/m <sup>2</sup>
BETWEEN SEPTEMBER AND MARCH	
CYNODON DACTYLON	15gm/m <sup>2</sup>
PASPALUM NOTATUM	10gm/m <sup>2</sup>
LOLUM PERENNE	5gm/m <sup>2</sup>
ERMOCHLOA OPHIUROIDES	5gm/m <sup>2</sup>
	35gm/m <sup>2</sup>

3. SCHEDULE OF BAMBOO PLANTING

CODE 代號	BOTANICAL NAME 植物名稱	CHINESE NAME 中文名稱	HEIGHT(mm) 高度 (mm)	SPREAD(mm) 寬度 (mm)	CALIBER(mm) 胸徑 (mm)	SPACING(mm) 株距 (mm)	REMARKS 備註	QUANTITY 數量
SHRUB 灌木								
BAM.TUL	BAMBUSA TULDIOIDES	花簕竹	2m	0.8m	-	1.5m	6 SHOOTS	61

4. SCHEDULE OF TREE PLANTING

Code 代號	BOTANICAL NAME 植物名稱	CHINESE NAME 中文名稱	HEIGHT(mm) 高度 (mm)	SPREAD(mm) 寬度 (mm)	CALIBER(mm) 胸徑 (mm)	SPACING(mm) 株距 (mm)	REMARKS 備註	QUANTITY 數量
TREE 樹類								
CEL.SIN.	CELTIS SINENSIS	朴樹	HEAVY STANDARD	-	-	AS SHOWN	POTTED	37
CIN.CAM.	CINNAMOMUM CAMPHORA	樟樹	HEAVY STANDARD	-	-	AS SHOWN	POTTED	76
FIC.MIC.	FICUS MICROCARPA	細葉榕	HEAVY STANDARD	-	-	AS SHOWN	POTTED	26
HIB.TIL.	HIBISCUS TILIAEUS	黃槿	HEAVY STANDARD	-	-	AS SHOWN	POTTED	11
								150

© Copyright by Black & Veatch Hong Kong Limited and Government of HKSAR

NOTES :

- GRID LINES ARE HONG KONG METRIC GRID 1980.
- THE LOCATION OF THE TREES ARE INDICATIVE THE EXACT LOCATION SHALL BE DETERMINED ON SITE.
- SUPPLY OF WATER TO ESTABLISH THE PLANTS SHALL BE PROVIDED BY THE CONTRACTOR AND ENTITLED AT THE EXPENSE OF THE CONTRACTOR.

LEGEND :

- PROPOSED LOCATION FOR TRANSPLANTED TREE
- TREE PROPOSED TO BE RETAINED
- PROPOSED HEAVY STANDARD TREE
- WORKS BOUNDARY
- HYDROSEEDING AREA
- BAMBOO PLANTING AREA
- AREA TO BE FILLED TO ADJACENT GROUND LEVEL

Revision	Date	Description	Initial
	Designed	Checked	Drawn
Initial	SFL	KIL	HKF
Date	02/06	02/06	02/06
Approved			

AGREEMENT NO. CE 67/98

Contract title

YUEN LONG, KAM TIN, NGAU TAM MEI AND TIN SHUI WAI DRAINAGE IMPROVEMENT, STAGE 1, PHASE 2B - KAM TIN

Drawing title

COMPENSATORY PLANTING PROPOSAL FOR PROPOSED CHANNEL -KT15

Drawing no.

CP-15

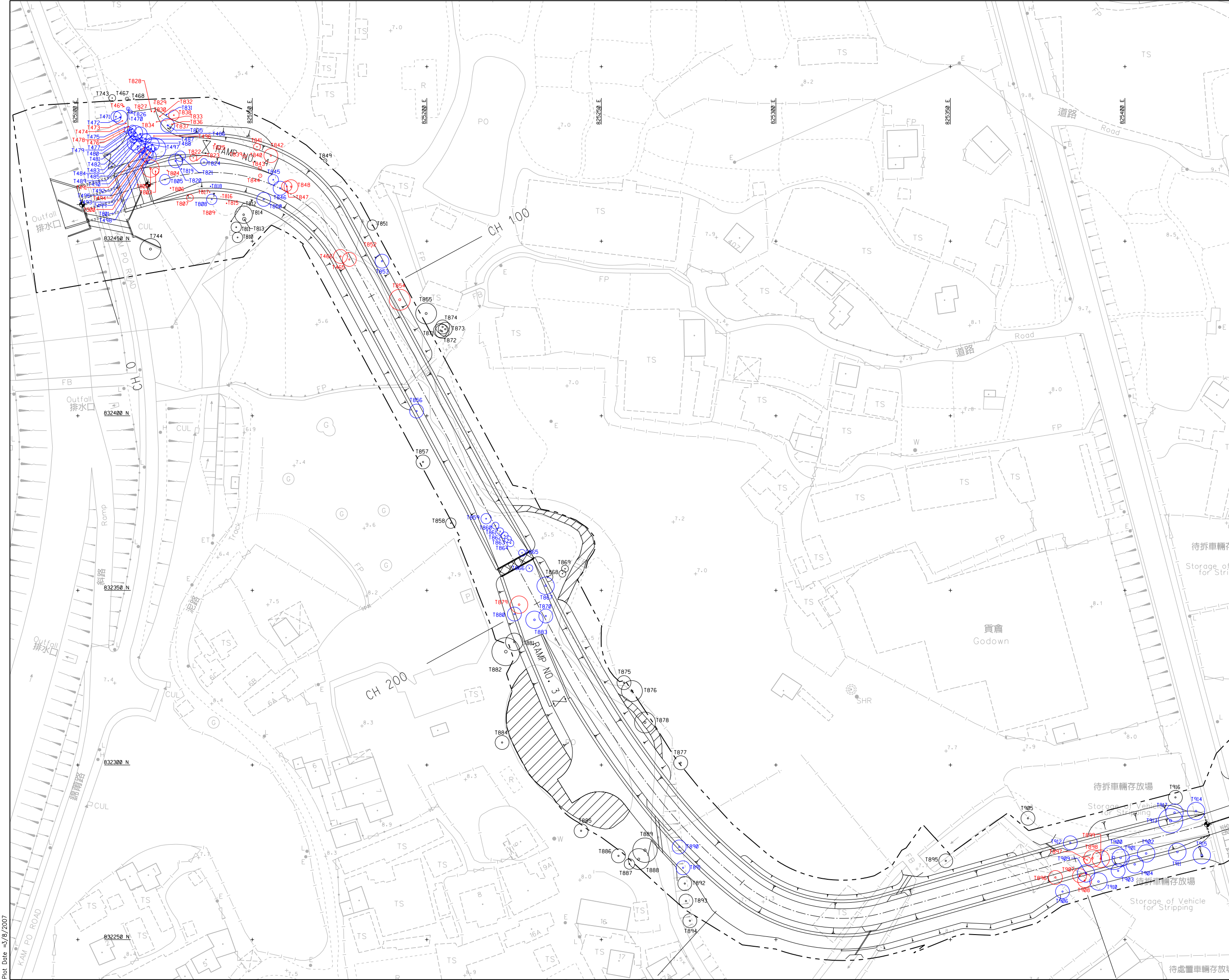
Scale

1:2000 A3

香港特別行政區政府渠務署  
THE GOVERNMENT OF THE HONG KONG  
SPECIAL ADMINISTRATIVE REGION  
DRAINAGE SERVICES DEPARTMENT

BLACK & VEATCH HONG KONG LIMITED  
博威工程顧問有限公司





© Copyright by Black & Veatch Hong Kong Limited and Government of HKSAR

LEGEND

- TREE PROPOSED TO BE RETAINED
- TREE PROPOSED TO BE TRANSPLANTED
- TREE PROPOSED TO BE FELLED
- WORK BOUNDARY

SHEET INDEX

KT2	KT15	KT14	KT13	KT12
-----	------	------	------	------

Revision	Date	Description		Initial
	Designed	Checked	Drawn	Checked
Initial	BW	JT	SC	JT
Date	8/05	8/05	8/05	8/05
Approved				

Contract no.  
**CE 67/98**

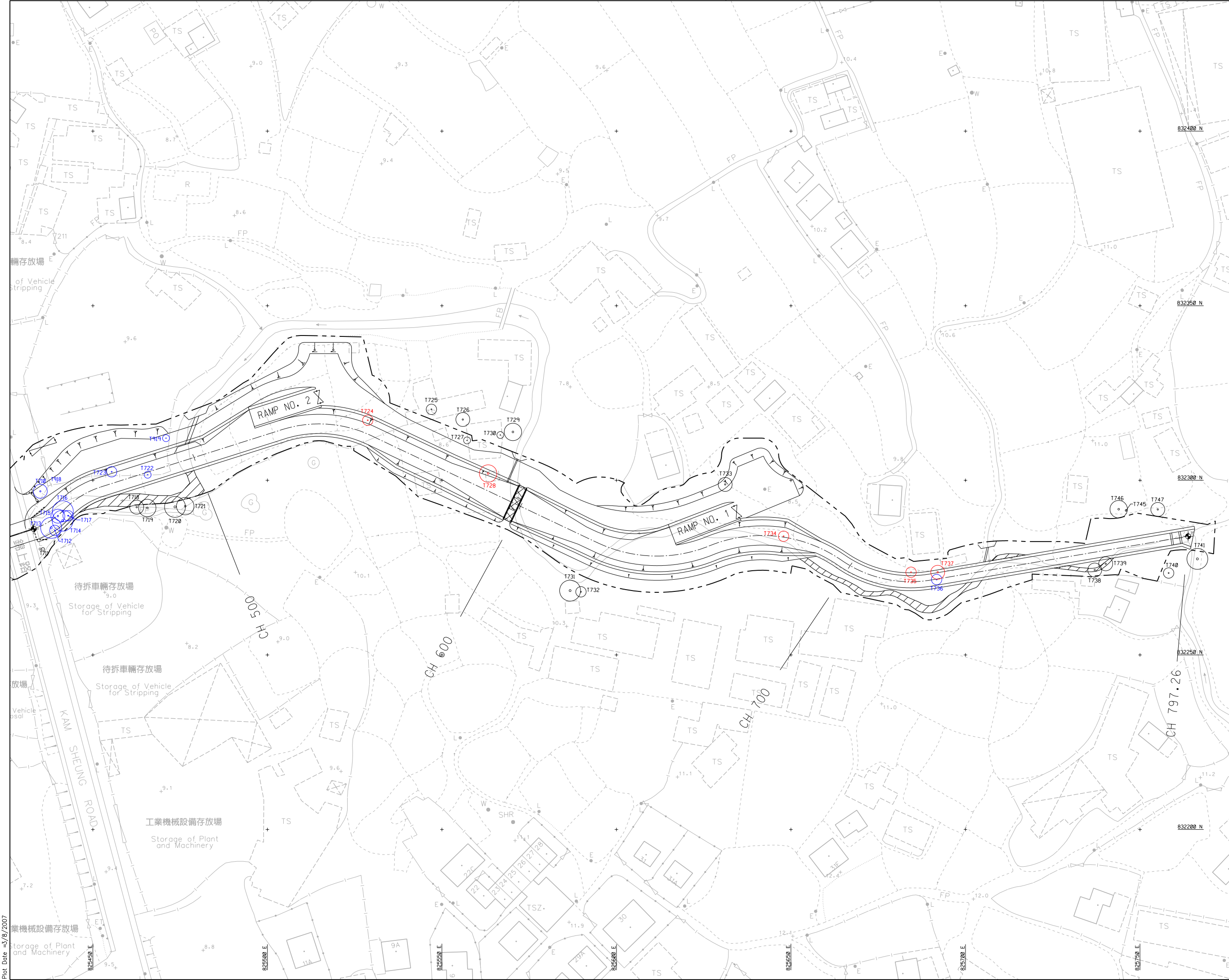
Contract title  
**YUEN LONG, KAM TIN, NGAU TAM MEI & TIN SHUI WAI DRAINAGE IMPROVEMENT, STAGE 1 PHASE 2B - KAM TIN**

Drawing title  
**TREE SURVEY PLAN FOR PROPOSED CHANNEL KT15**

Drawing no.	Scale
TS-05	1:1000 A3 1:500 A1

香港特別行政區政府渠務署  
THE GOVERNMENT OF THE HONG KONG  
SPECIAL ADMINISTRATIVE REGION  
DRAINAGE SERVICES DEPARTMENT

BLACK & VEATCH HONG KONG LIMITED  
博威工程顧問有限公司



© Copyright by Black & Veatch Hong Kong Limited and Government of HKSAR

LEGEND

TREE PROPOSED TO BE RETAINED

TREE PROPOSED TO BE TRANSPLANTED

TREE PROPOSED TO BE FELLED

WORK BOUNDARY

SHEET INDEX

KT2

KT15

KT14

KT13

KT12

Revision	Date	Description	Initial
	Designed	Checked	Drawn
Initial	BW	JT	SC
Date	8/05	8/05	8/05
Approved			

Contract no.

CE 67/98

Contract title

YUEN LONG, KAM TIN, NGAU TAM MEI & TIN SHUI WAI  
DRAINAGE IMPROVEMENT, STAGE 1  
PHASE 2B – KAM TIN

Drawing title

TREE SURVEY PLAN  
FOR PROPOSED  
CHANNEL KT15

Drawing no.

TS-06

Scale

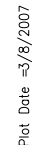
1:1000 A3  
1:500 A1

香港特別行政區政府渠務署  
THE GOVERNMENT OF THE HONG KONG  
SPECIAL ADMINISTRATIVE REGION  
DRAINAGE SERVICES DEPARTMENT

BLACK & VEATCH HONG KONG LIMITED  
博威工程顧問有限公司

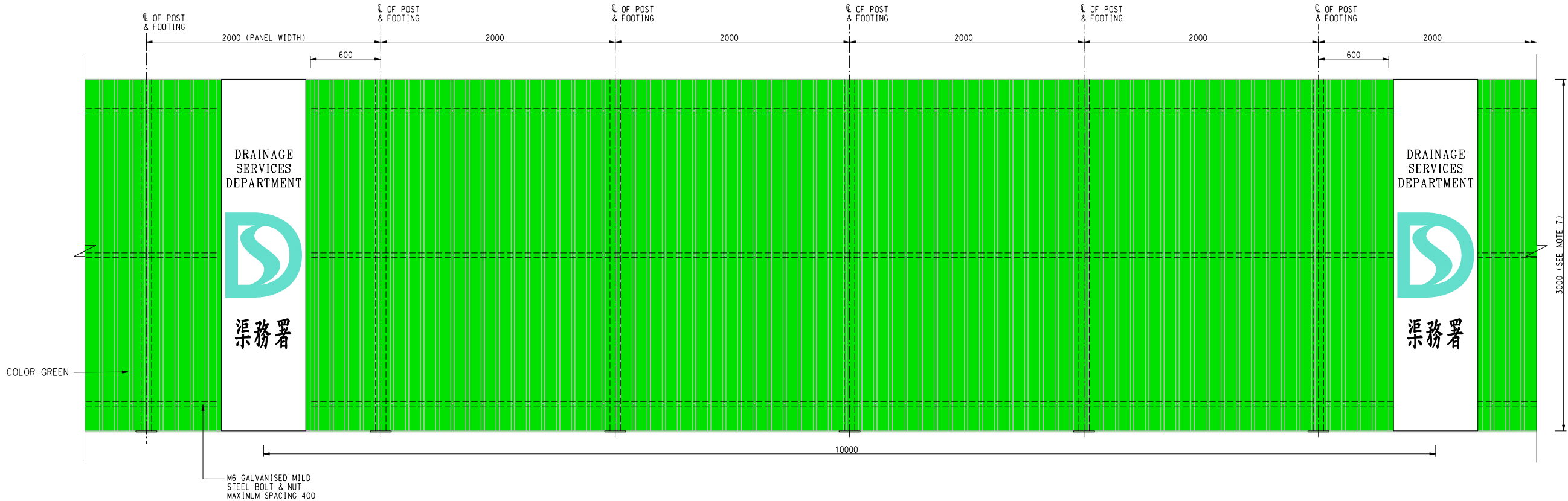
Plot Date = 3/8/2007







Plot Date = 3/8/2007



TYPICAL ELEVATION OF NOISE BARRIER / SITE HOARDING  
SCALE 1 : 40 (A3)

© Copyright by Black & Veatch Hong Kong Limited and Government of HKSAR

- NOTE :
1. DIMENSIONS ARE IN MILLIMETRES.
  2. FOR DETAILS OF DRAINAGE SERVICES DEPARTMENT LOGO, SEE DRG. NO. DS 1057.
  3. ALL STEELWORK EXCEPT CORRUGATED STEEL SHEETING SHALL BE PAINTED WITH SYSTEM A STATED IN G.S. CLAUSE 18.62.
  4. CORRUGATED STEEL SHEETING SHALL HAVE SECTION MODULUS NOT LESS THAN 2000mm<sup>3</sup>/m. THE SHEETING SHALL BE TO BS3083 8/3 G350. THE SURFACE DENSITY SHALL BE LARGER THAN 10 kg/m.
  5. THE CONTRACTOR MAY SUBMIT PROPOSAL WITH DESIGN CALCULATION FOR ALTERNATIVE MATERIAL (OTHER THAN HARDWOOD) AND CONSTRUCTION DETAILS (INCLUDING FOUNDATION DETAILS) FOR THE SITE HOARDING WHICH MUST BE CAPABLE OF WITHSTANDING A WIND PRESSURE OF 1.2 kPa. ANY SUCH CONTRACTOR'S REQUESTED VARIATION, IF AGREED TO BY THE ENGINEER, SHALL BE VALUED IN ACCORDANCE WITH THE CONTRACT.
  6. COLOUR OF PAINTING AS BS 5252 : 1976.
  7. HEIGHT OF NOISE BARRIER SHALL BE 3m. HEIGHT OF SITE HOARDING SHALL BE 2.4m.
  8. NOISE BARRIER SHALL BE PROVIDED AT LOCATIONS AS SHOWN IN THE PROJECT PROFILE SUBMITTED UNDER THE ENVIRONMENTAL IMPACT ASSESSMENT ORDINANCE (APPLICATION NO.DIR-127/2005). SITE HOARDING SHALL BE PROVIDED FOR THE REMAINING LOCATIONS.

Revision	Date	Description			Initial
	Designed	Checked	Drawn	Verified	
Initial	SFL	KIL	HKF	KIL	
Date	02/06	02/06	02/06	02/06	

Approved

AGREEMENT NO. CE 67/98

Contract title

YUEN LONG, KAM TIN,  
NGAU TAM MEI AND TIN SHUI WAI  
DRAINAGE IMPROVEMENT, STAGE 1,  
PHASE 2B - KAM TIN

Drawing title

NOISE BARRIER /  
SITE HOARDING

Drawing no.

FIGURE 1

Scale

AS SHOWN

 香港特別行政區政府渠務署  
THE GOVERNMENT OF THE  
HONG KONG  
SPECIAL ADMINISTRATIVE REGION  
DRAINAGE SERVICES DEPARTMENT

 BLACK & VEATCH HONG KONG LIMITED  
博威工程顧問有限公司