

General & Preliminary

| Commencement Date | | | | | | | | | |
|-------------------|---------------------------|----|----------|----------|----------|----------|-----|------|---|
| PRE-1020 | Commencement of Works | 0 | 18JUL06A | | 18JUL06A | | 100 | | 2 |
| Completion Date | | | | | | | | | |
| PRE-1060 | Completion of Works | 0 | | 10NOV08 | | 03JUL09 | 0 | -193 | 2 |
| General | | | | | | | | | |
| PRE-1040 | Site Office Establishment | 14 | 19JUL06A | 31JUL06A | 19JUL06A | 31JUL06A | 100 | | 2 |

Manufacturing & Delivery

| + General | | | | | | | | | |
|-----------|--|-----|----------|----------|----------|----------|-----|--|---|
| | | 461 | 07AUG06A | 10NOV07A | 07AUG06A | 10NOV07A | 100 | | 2 |

Instrumentation & Monitoring Works

| + General | | | | | | | | | |
|-----------|--|-----|----------|---------|----------|---------|----|-----|---|
| | | 900 | 18JUL06A | 10NOV08 | 18JUL06A | 03JUL09 | 78 | 532 | 1 |

Section 2a - Tunnel & Associated Works

| Commencement Date | | | | | | | | | |
|-------------------|----------------------|---|----------|---------|----------|---------|-----|------|---|
| 2A-1020 | Section Commencement | 0 | 18JUL06A | | 18JUL06A | | 100 | | 2 |
| Completion Date | | | | | | | | | |
| 2A-1040 | Section Completion | 0 | | 10NOV08 | | 30APR09 | 0 | -129 | 2 |

+ Design & Submission

| | | | | | | | | | |
|--|--|-----|----------|---------|----------|---------|----|------|---|
| | | 794 | 01AUG06A | 14FEB08 | 01AUG06A | 02OCT08 | 99 | -107 | 2 |
|--|--|-----|----------|---------|----------|---------|----|------|---|

+ Soil Nail Works

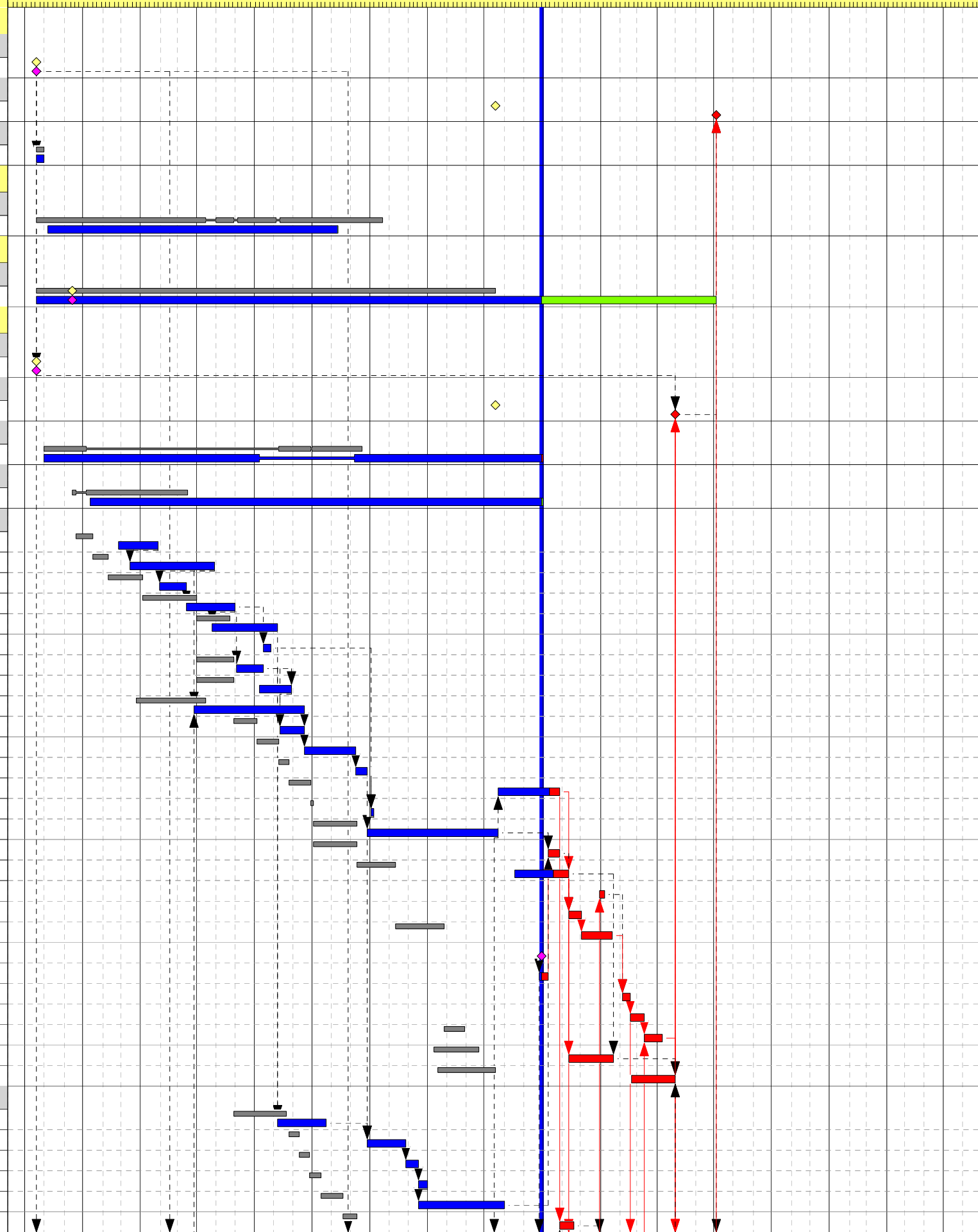
| | | | | | | | | | |
|--|--|-----|----------|---------|----------|---------|----|----|---|
| | | 602 | 12OCT06A | 26NOV07 | 12OCT06A | 30SEP08 | 99 | 70 | 1 |
|--|--|-----|----------|---------|----------|---------|----|----|---|

High Tunnel

| | | | | | | | | | |
|----------|--|-----|----------|----------|----------|----------|-----|------|---|
| HT-C1020 | Install Pipe Roof, Grouting & Temp. Soil Nails | 21 | 27NOV06A | 27JAN07A | 27NOV06A | 27JAN07A | 100 | | 1 |
| HT-C1040 | Construct Temporary Noise Enclosure | 21 | 15DEC06A | 28APR07A | 15DEC06A | 28APR07A | 100 | | 1 |
| HT-C1060 | Excavate Type A Tunnel (Soft) | 45 | 30JAN07A | 13MAR07A | 30JAN07A | 13MAR07A | 100 | | 1 |
| HT-C1080 | Excavate Type A Tunnel (Hard) | 70 | 14MAR07A | 31MAY07A | 14MAR07A | 31MAY07A | 100 | | 1 |
| HT-C1100 | Excavate Low Tunnel Chamber | 45 | 24APR07A | 06AUG07A | 24APR07A | 06AUG07A | 100 | | 1 |
| HT-C1110 | 1st Site Trials of Sub-vert. Drain | 2 | 16JUL07A | 27JUL07A | 16JUL07A | 27JUL07A | 100 | | 1 |
| HT-C1120 | Excavate Type B2 Starter Tunnel | 50 | 02JUN07A | 14JUL07A | 02JUN07A | 14JUL07A | 100 | | 1 |
| HT-C1140 | Level & Setup Rail & Track to TBM Excavation | 50 | 09JUL07A | 28AUG07A | 09JUL07A | 28AUG07A | 100 | | 1 |
| HT-C1160 | Install & T&C of Mucking System | 90 | 26MAR07A | 18SEP07A | 26MAR07A | 18SEP07A | 100 | | 1 |
| HT-C1180 | Assembly TBM at Portal & Move into High Tunnel | 30 | 10AUG07A | 18SEP07A | 10AUG07A | 18SEP07A | 100 | | 1 |
| HT-C1200 | Excavate High Tunnel(TBM)(Grouting Allowed) | 30 | 19SEP07A | 01DEC07 | 19SEP07A | 08DEC07A | 100 | | 1 |
| HT-C1220 | Retract TBM & Remove from High Tunnel | 14 | 03DEC07 | 18DEC07 | 10DEC07A | 27DEC07A | 100 | | 1 |
| HT-C1240 | Cast Invert of Type B Tunnel (259m) | 45 | 19DEC07 | 24JAN08 | 23JUL08A | 28OCT08 | 70 | -102 | 1 |
| HT-C1260 | Remaining Site Trials of Sub-vert. Drains | 2 | 25JAN08 | 26JAN08 | 03JAN08A | 05JAN08A | 100 | | 1 |
| HT-C1280 | Install Sub-vert. Drains (99 nos.) | 120 | 28JAN08 | 07APR08 | 28DEC07A | 22JUL08A | 100 | | 1 |
| HT-C1290 | Cast Invert of Type A Tunnel (U0+00~U0+22.5) | 14 | 28JAN08 | 07APR08 | 11OCT08 | 27OCT08 | 0 | -89 | 1 |
| HT-C1300 | Cast Type B Crown Lining (259m),Drains,etc | 60 | 08APR08 | 05JUN08 | 18AUG08A | 11NOV08 | 65 | -102 | 1 |
| HT-C1305 | Construct Headwalls at Intersection | 6 | | | 30DEC08 | 06JAN09 | 0 | -84 | 1 |
| HT-C1310 | Erection of Type A Crown Lining Formwork | 18 | | | 12NOV08 | 02DEC08 | 0 | -102 | 1 |
| HT-C1320 | Cast Type A Crown Lining (U0+00~U0+22.5) | 40 | 06JUN08 | 22AUG08 | 03DEC08 | 20JAN09 | 0 | -102 | 1 |
| HT-C1325 | Lining Design Confirmation (U0+22.5~U0+37.5) | 0 | | | 30SEP08* | | 0 | 532 | 1 |
| HT-C1330 | Cast Invert of Type A Tunnel (U0+22.5~U0+37.5) | 18 | | | 25SEP08A | 10OCT08 | 50 | -89 | 1 |
| HT-C1332 | Mobilization & Site Trial | 10 | | | 05FEB09 | 16FEB09 | 0 | -102 | 1 |
| HT-C1335 | Shotcrete Type A Crown Lining (U0+22.5~U0+37.5) | 20 | | | 17FEB09 | 11MAR09 | 0 | -102 | 1 |
| HT-C1340 | Cast Vertical Shaft, Walkway & Drainage | 25 | 23AUG08 | 23SEP08 | 12MAR09 | 09APR09 | 0 | -102 | 1 |
| HT-C1360 | Complete Sub-vert. Drain Connection,Downpipe,etc | 60 | 08AUG08 | 17OCT08 | 12NOV08 | 22JAN09 | 0 | -25 | 1 |
| HT-C1380 | E&M Works & External Works | 60 | 14AUG08 | 10NOV08 | 20FEB09 | 30APR09 | 0 | -102 | 1 |

Low Tunnel

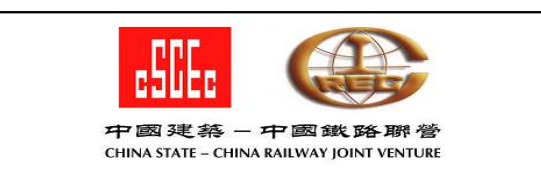
| | | | | | | | | | |
|----------|---|----|----------|----------|----------|----------|-----|-----|---|
| LT-C1020 | Excavate Type B2 Starter Tunnel (15m) | 70 | 07AUG07A | 22OCT07A | 07AUG07A | 22OCT07A | 100 | | 1 |
| LT-C1040 | Reposition TBM for Low Tunnel Excavation | 14 | 19DEC07 | 05JAN08 | 28DEC07A | 26FEB08A | 100 | | 1 |
| LT-C1060 | Excavate Low Tunnel(TBM-165m)(Grouting Allowed) | 14 | 07JAN08 | 22JAN08 | 26FEB08A | 17MAR08A | 100 | | 1 |
| LT-C1080 | Remove TBM & Track from Low Tunnel | 14 | 23JAN08 | 07FEB08 | 18MAR08A | 31MAR08A | 100 | | 1 |
| LT-C1100 | Remove Hopper & Conveyor System | 30 | 08FEB08 | 13MAR08 | 18MAR08A | 31JUL08A | 100 | | 1 |
| LT-C1120 | Cast Invert of Type B Tunnel (179m) | 20 | 14MAR08 | 07APR08 | 29OCT08 | 20NOV08 | 0 | -60 | 1 |



Start Date 04JUL06
 Finish Date 03JUL10
 Data Date 30SEP08
 Run Date 02OCT08 10:45

| | |
|--|-------------------|
| | MP1A |
| | Current |
| | Progress Bar |
| | Critical Activity |

MP26
 Contract GE/2005/45
 Landslide Preventive Works
 at Po Shan Road, Mid-Levels
 (as at 30 Sep 2008)
 Monthly Progress Update



| Revisions | | | |
|-----------|------------------------------------|---------|----------|
| Date | Revision | Checked | Approved |
| 30SEP08 | For Monthly Progress Report (MP26) | CYM | ET |
| | | | |
| | | | |

