

Annex F

## Impact Water Quality Monitoring Results

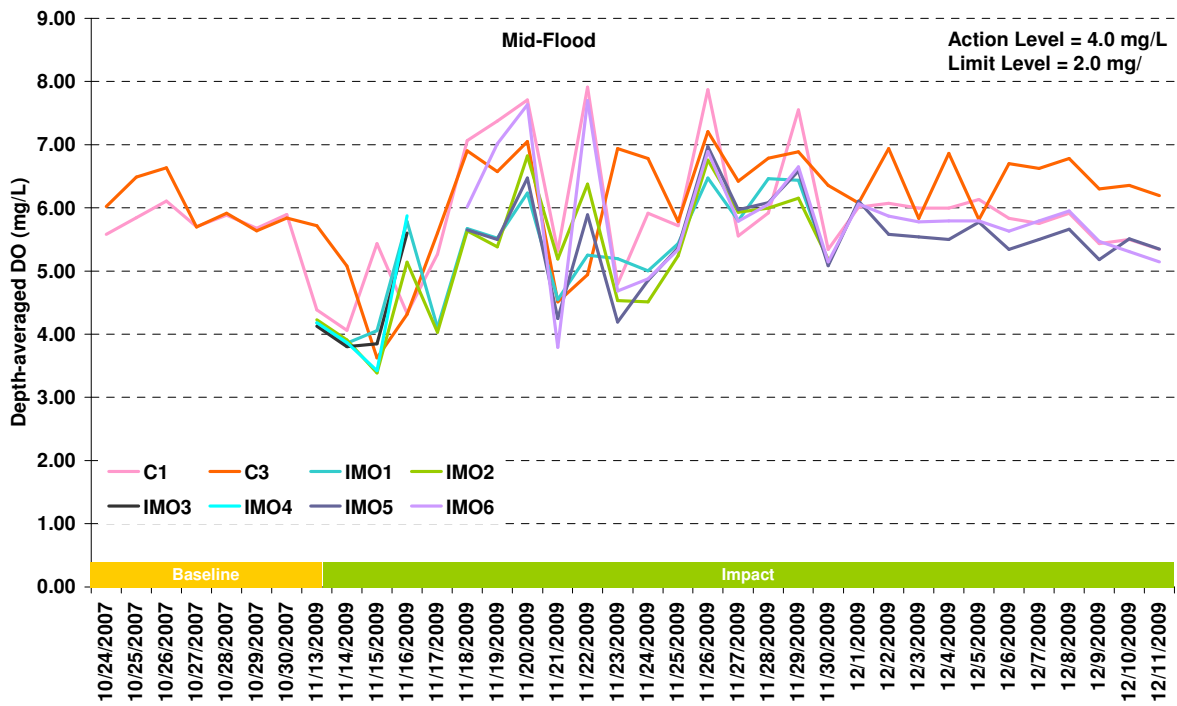
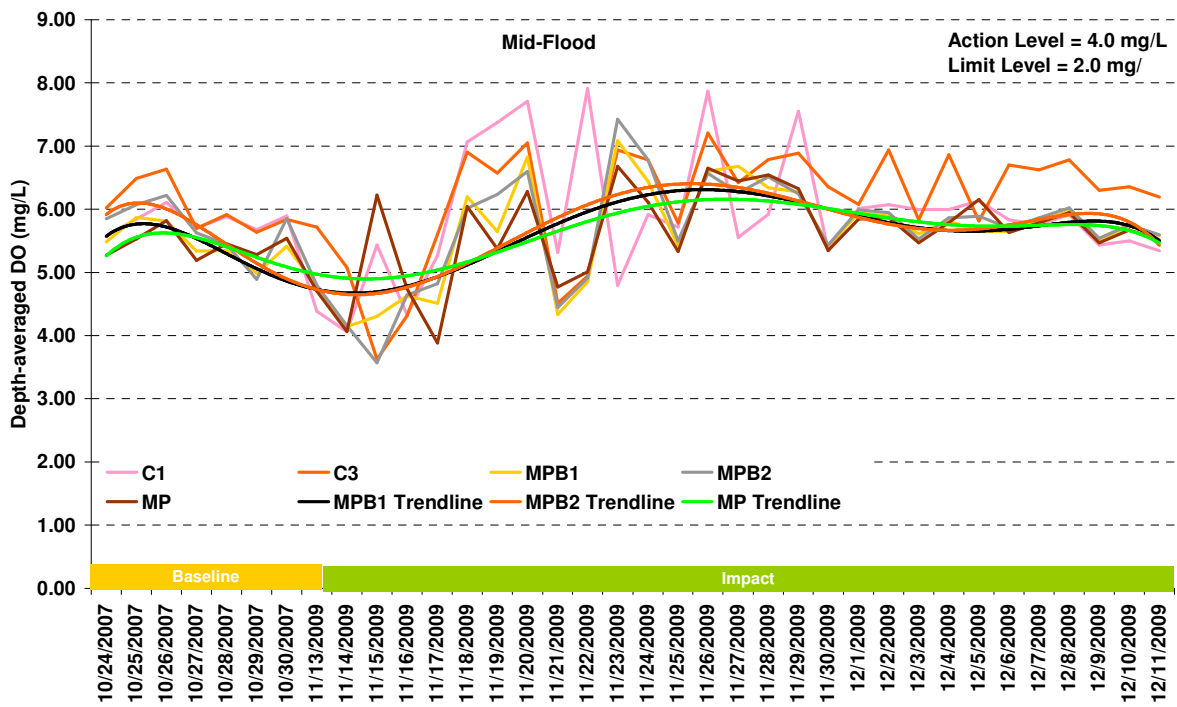


Figure F1 Dissolved oxygen concentration (depth-averaged) (mg/L) of water samples from the eleven sampling locations at mid-flood between 13 November and 11 December 2009.

Ref: 0018105\_Annex F\_water graphs.doc



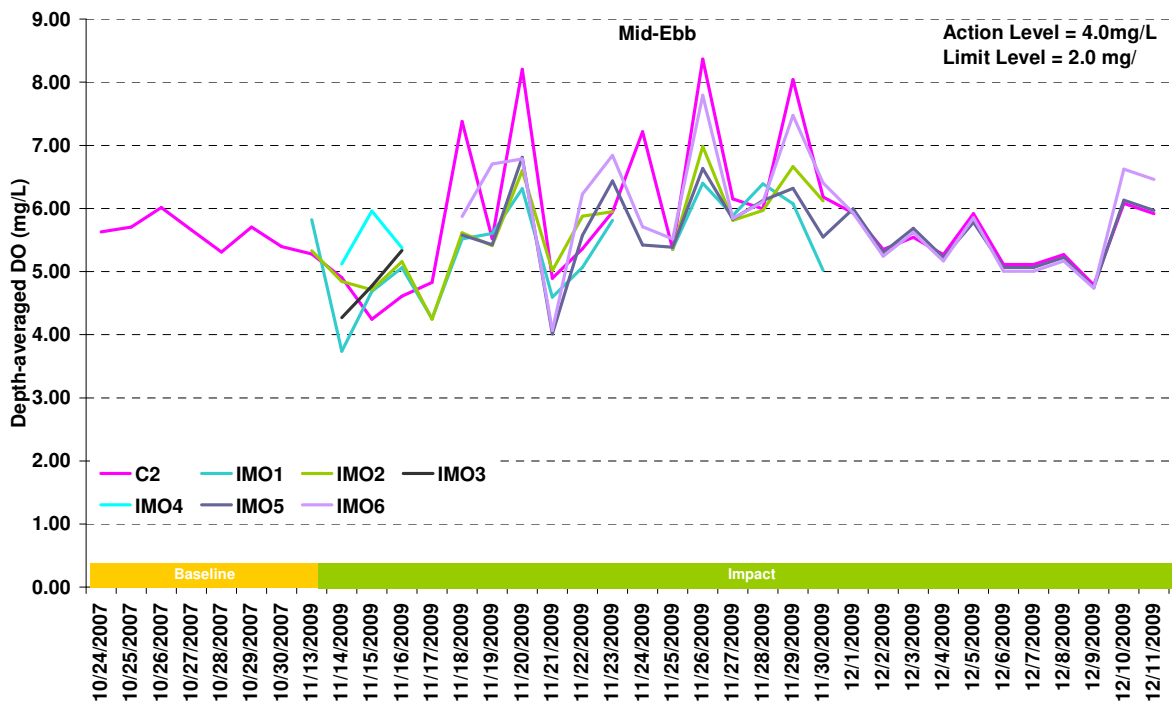
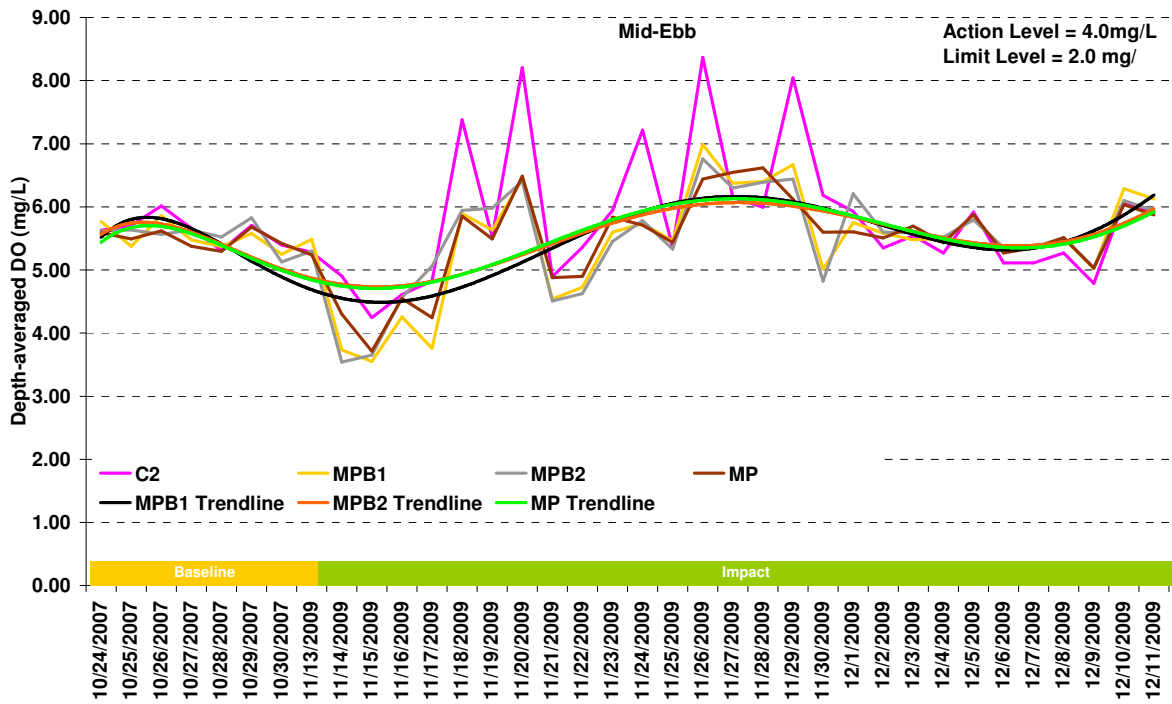


Figure F2 Dissolved oxygen concentration (depth-averaged) (mg/L) of water samples from the ten sampling locations at mid-ebb between 13 November and 11 December 2009.

Ref: 0018105\_Annex F\_water graphs.doc



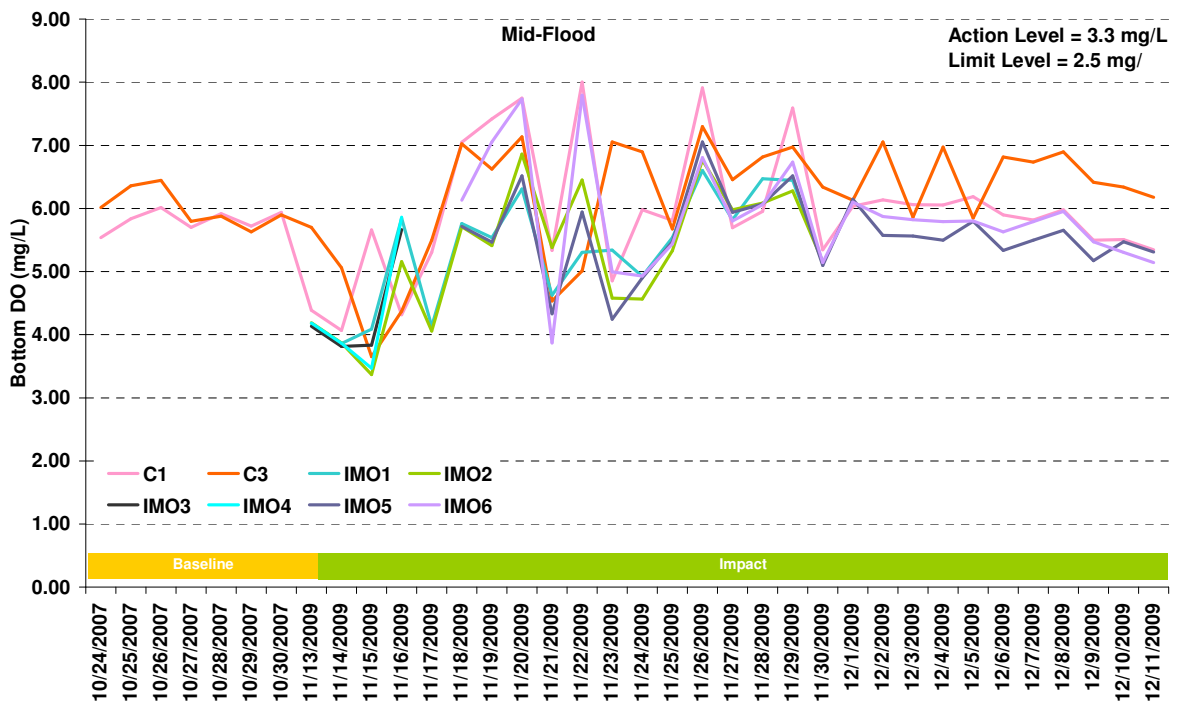
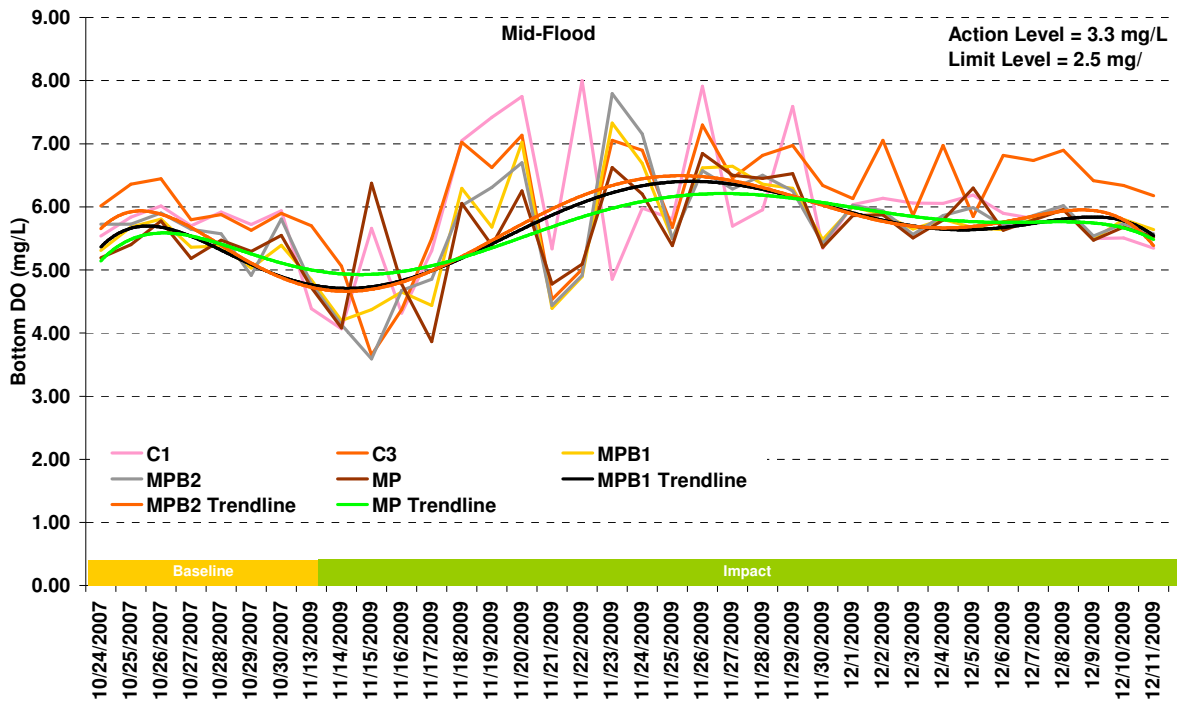


Figure F3 Dissolved oxygen concentration (bottom) (mg/L) of water samples from the eleven sampling locations at mid-flood between 13 November and 11 December 2009.



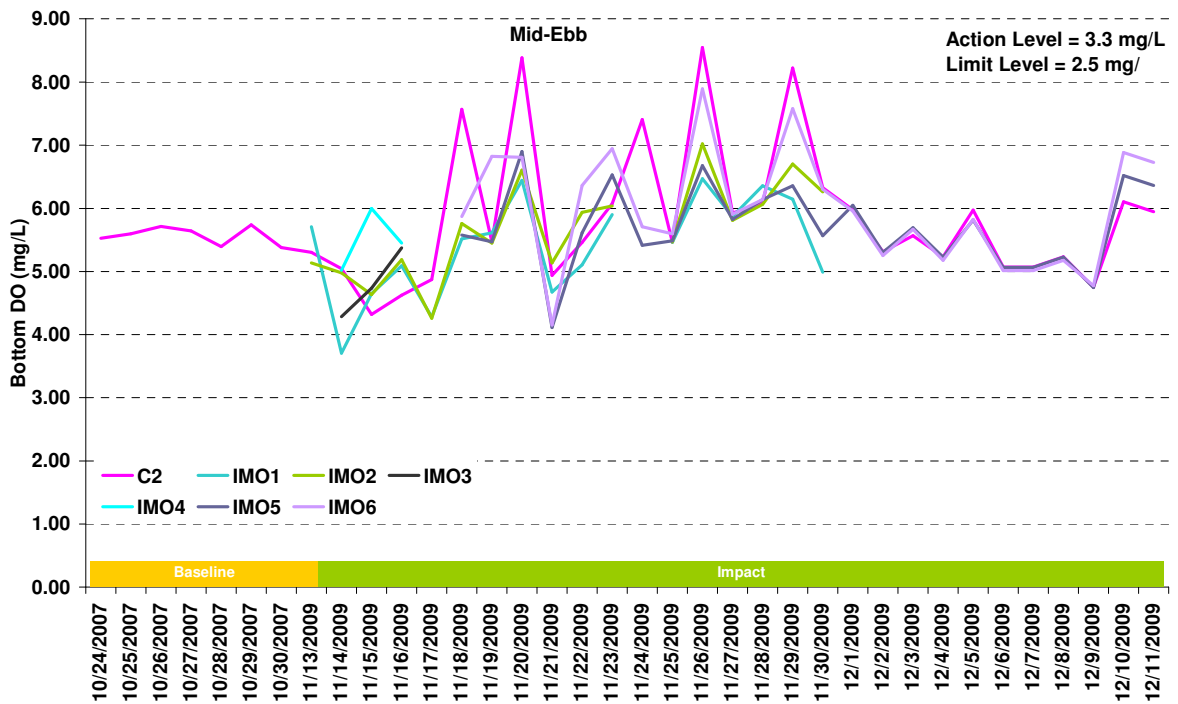
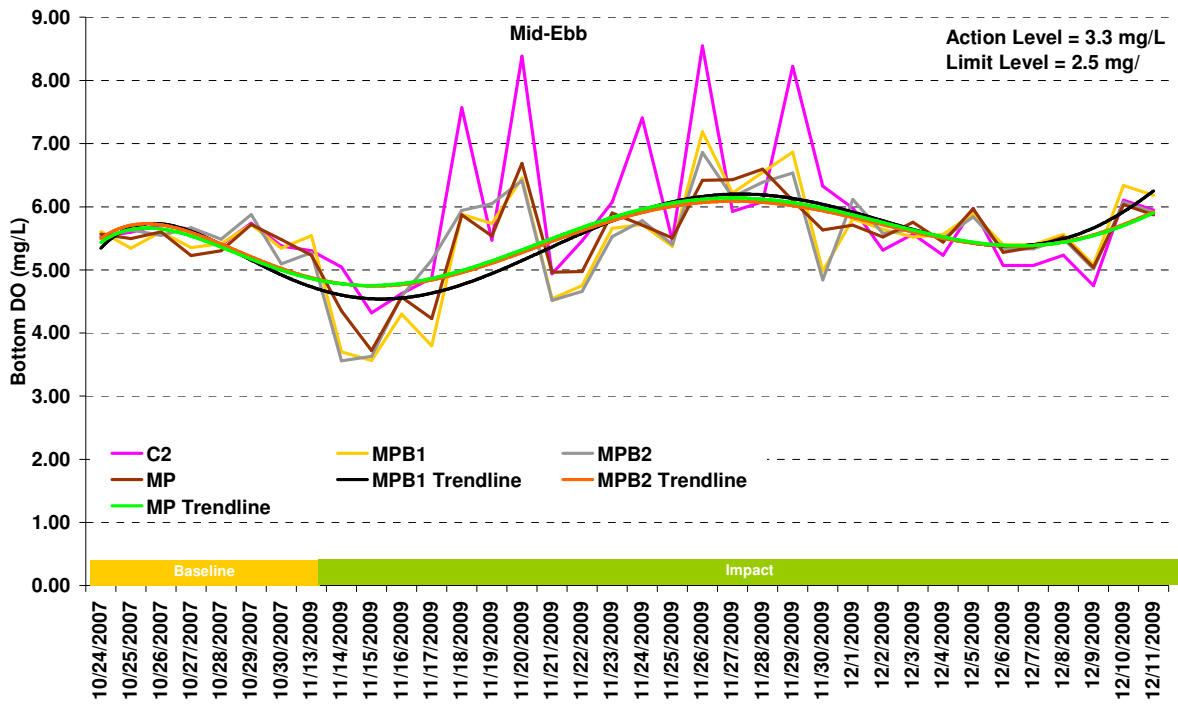


Figure F4 Dissolved oxygen concentration (bottom) (mg/L) of water samples from the ten sampling locations at mid-ebb between 13 November and 11 December 2009



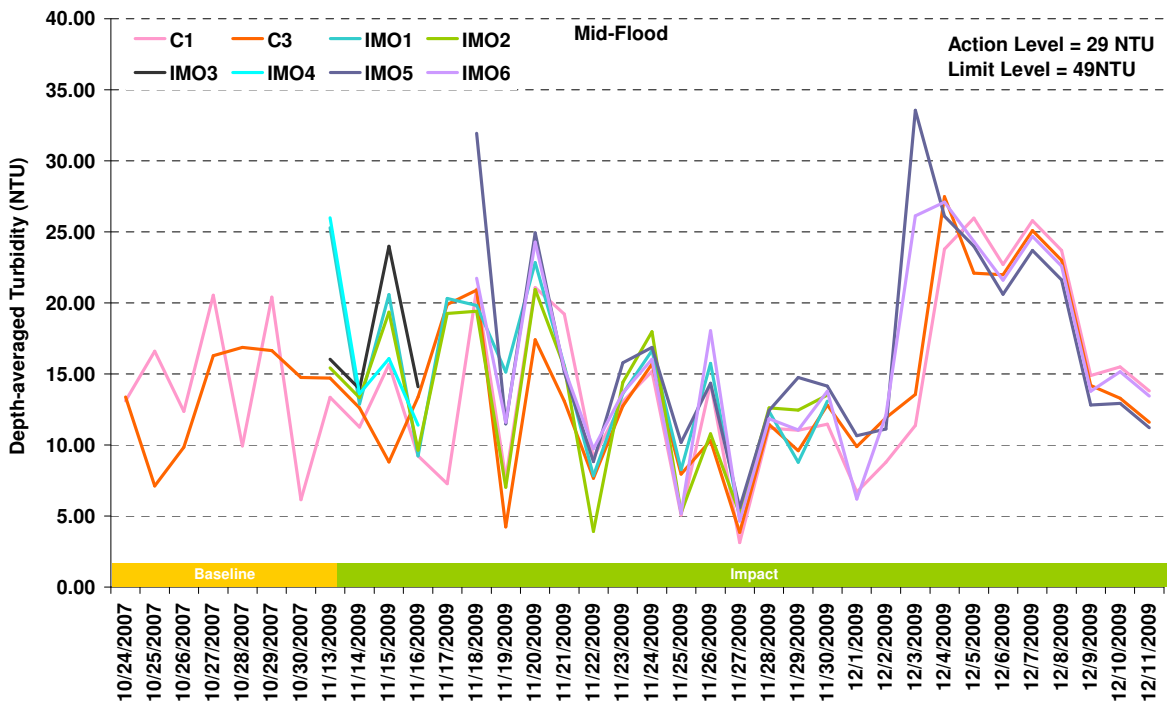
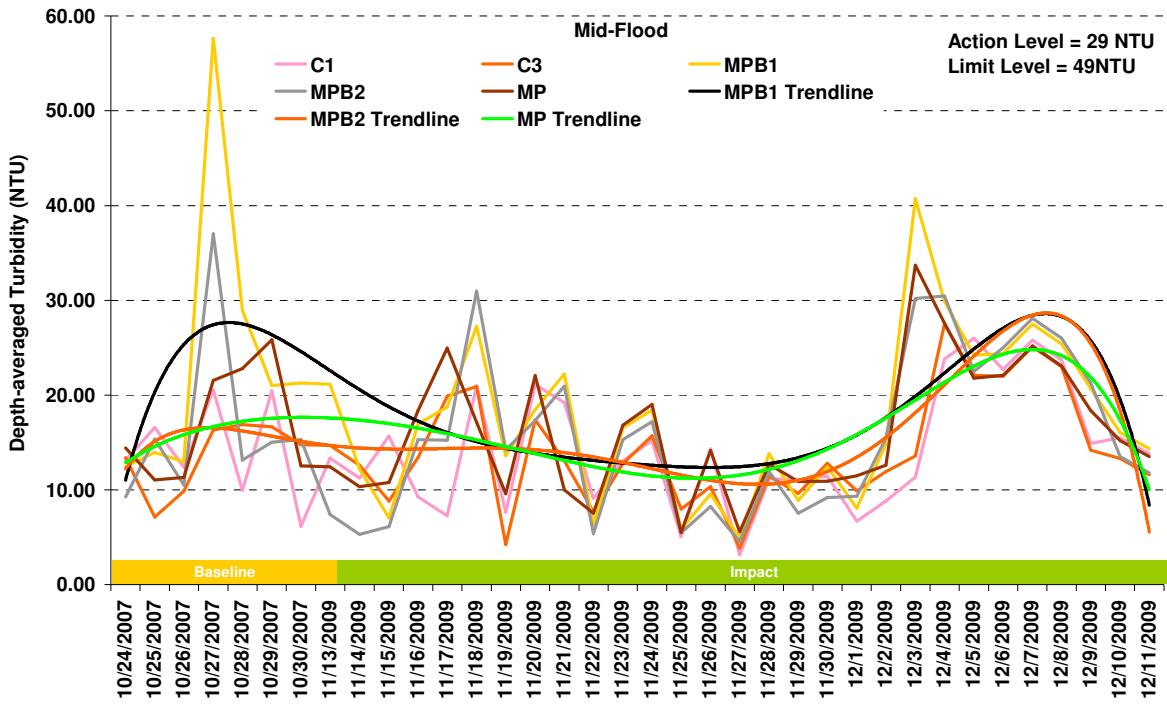


Figure F5 Depth-averaged turbidity (NTU) of water samples from the eleven sampling locations at mid-flood between 13 November and 11 December 2009.



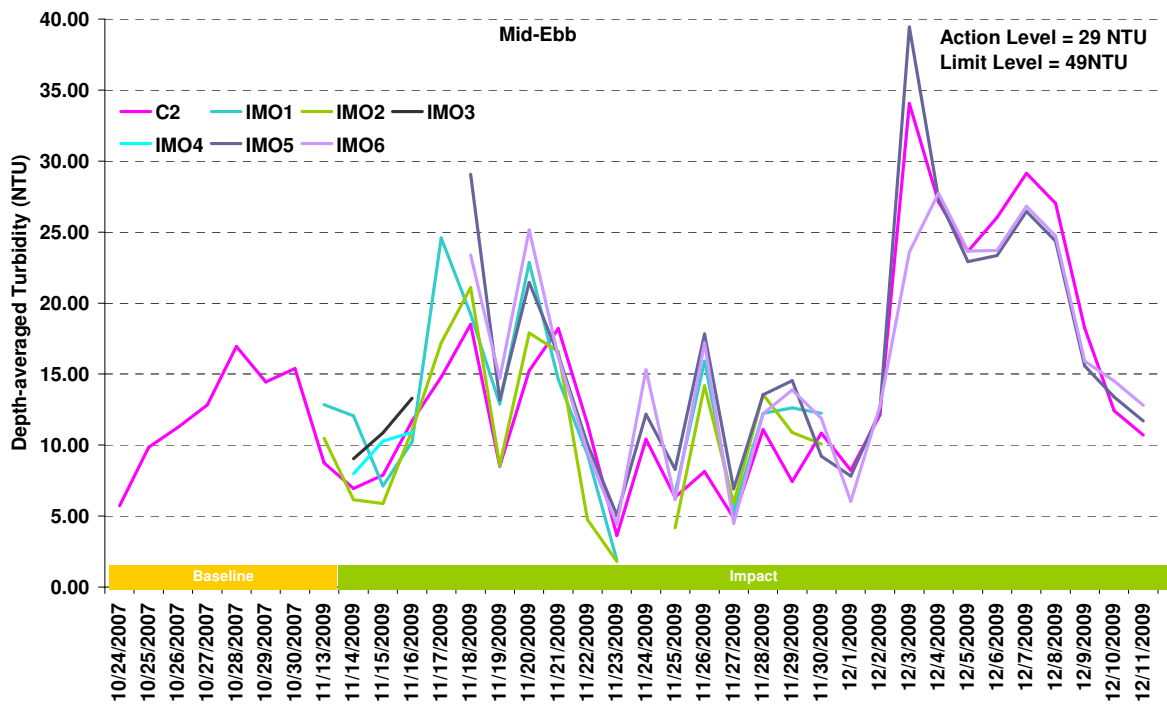
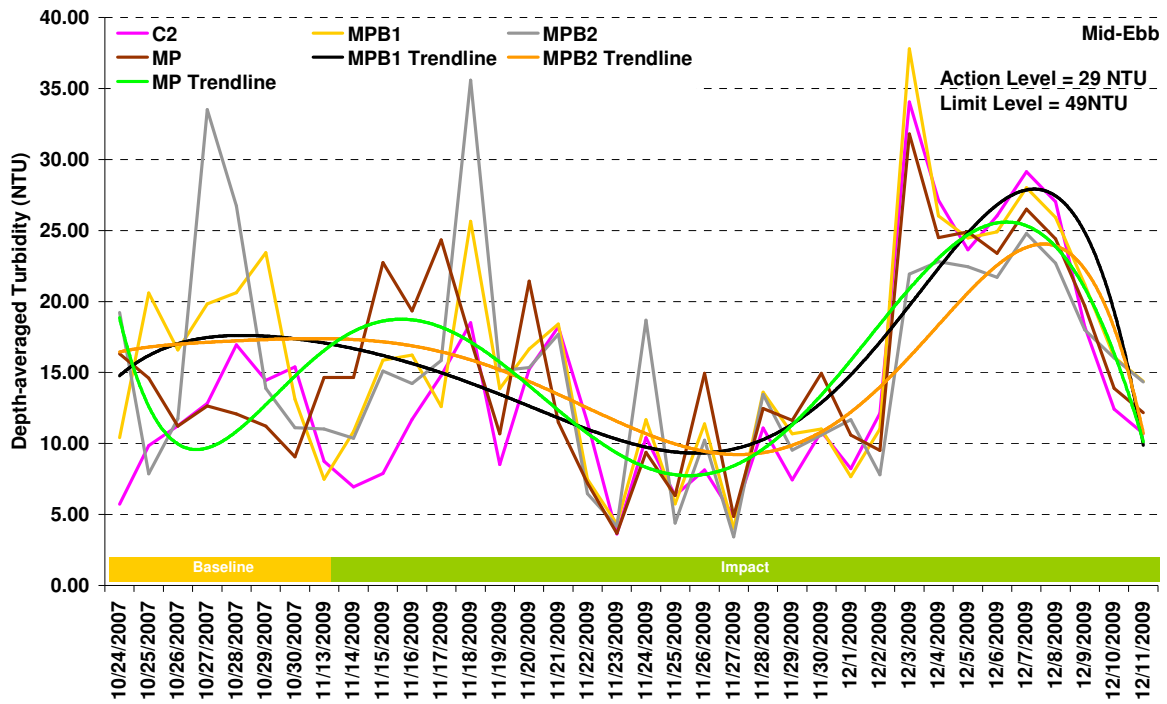


Figure F6 Depth-averaged turbidity (NTU) of water samples from the ten sampling locations at mid-ebb between 13 November and 11 December 2009.



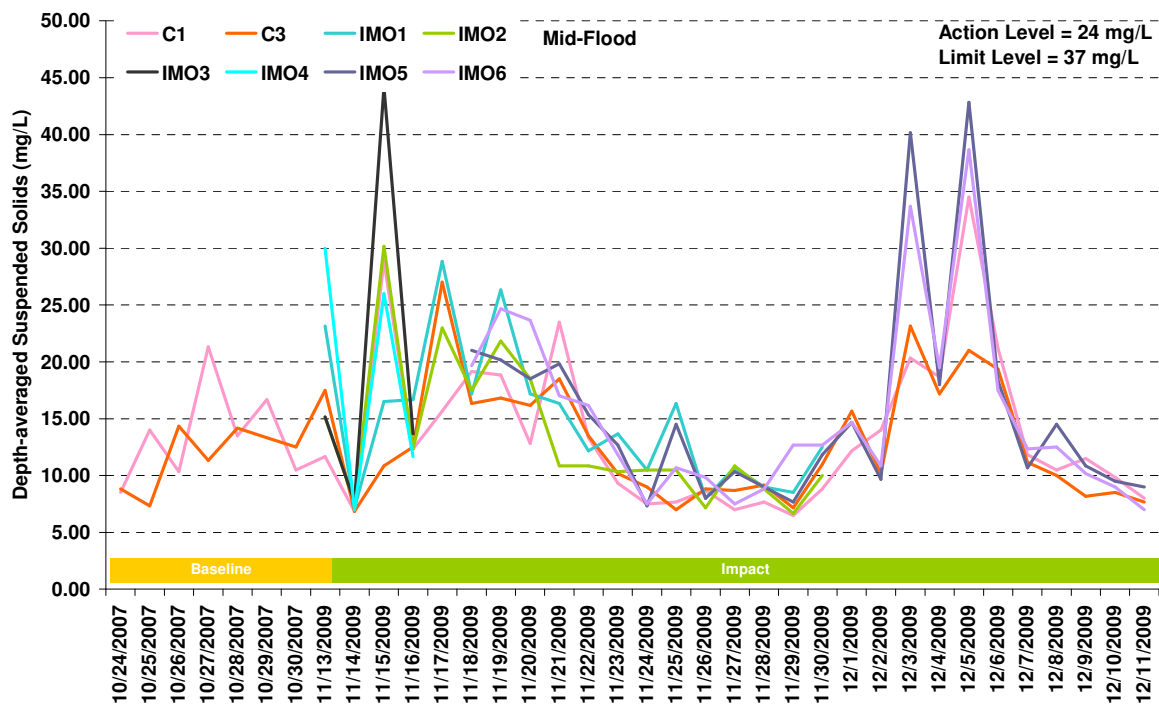
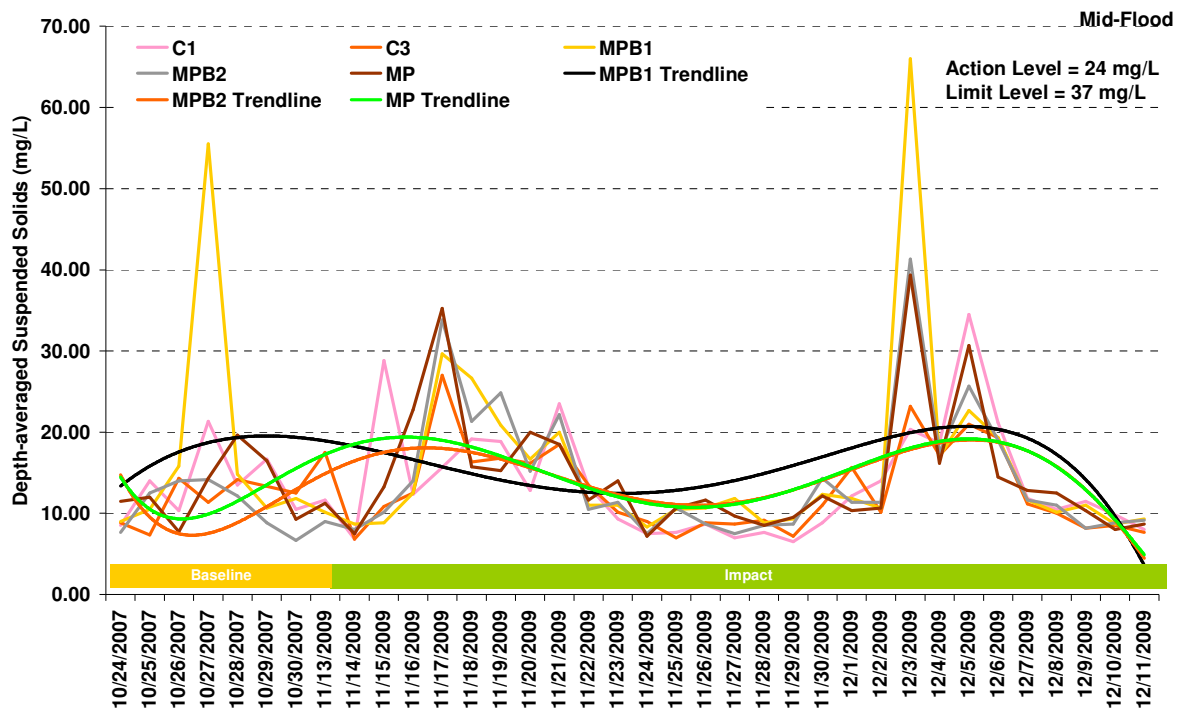


Figure F7 Depth-averaged suspended solids concentration (mg/L) of water samples from the eleven sampling locations at mid-flood between 13 November and 11 December 2009.





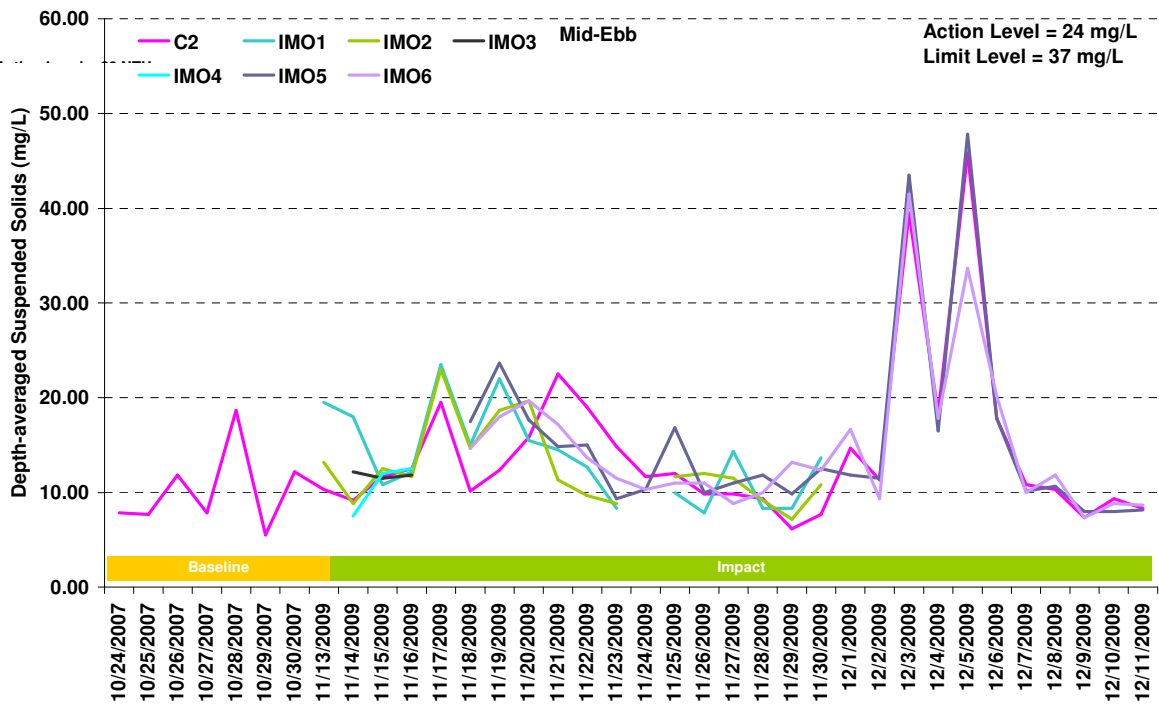
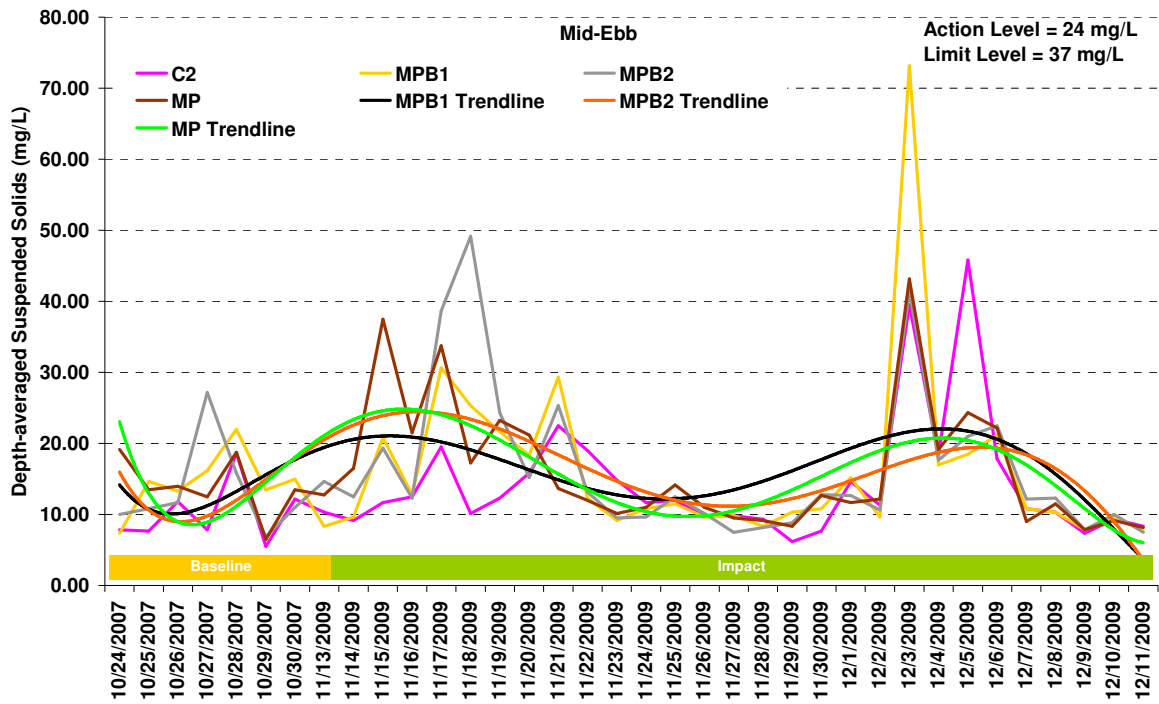


Figure F8 Depth-averaged suspended solids concentration (mg/L) of water samples from the ten sampling locations at mid-ebb between 13 November and 11 December 2009.

