

Start Date	30NOV07	[Green Bar]	Early Bar
Finish Date	27NOV12	[Blue Bar]	Progress Bar
Data Date	21FEB12	[Red Bar]	Critical Activity
Run Date	02APR12 09:04		

202A

Sheet 1 of 48

**Design & Construction of HK. West Drainage Tunnel**  
Contract No. DC/2007/10

WORKS PROGRAMME APPROVAL HISTORY			
Date	Revision	Checked	Approved
13JAN09	Approved Works Programme # 1	SOR	804B
27MAR09	Approved Works Programme # 2	SOR	9032
10DEC10	Approved Works Programme # 3	SOR	9116
01MAR10	Approved Works Programme # 4	SOR	003A
25FEB11	Approved Works Programme # 5	SOR	301F
29JUN11	Approved Works Programme # 6	SOR	WP6C













Act ID	Activity Description	Orig Dur	Anticipated Start	Anticipated Finish																																																									
					2007					2008					2009					2010					2011					2012																															
					N	D	J	F	M	A	M	J	J	A	S	O	N	D	J	F	M	A	M	J	J	A	S	O	N	D	J	F	M	A	M	J	J	A	S	O	N	D	J	F	M	A	M	J	J	A	S	O	N	D	J	F	M	A	M	J	J
<b>Adit Tunnel Excavation &amp; Tunnel Lining - BR4</b>																																																													
QHS110605	Adit Excavation Ch7 - Ch190 - BR4	47	26MAR11A	07JUN11A																																																									
QHS110606	Adit Excavation Ch190 - Ch380 - BR4	47	08JUN11A	24AUG11A																																																									
QHS110607	Stilling Chamber Excavation - BR4	12	25AUG11A	08SEP11A																																																									
QL094	Stilling chamber Lining - BR4	36	25OCT11A	20DEC11A																																																									
QL095	Lining BR4 - (373m)	45	09JAN12A	21MAR12																																																									
QL096	Junction main tunnel BR4	36	21FEB12	02APR12																																																									
QL097	Turning bay BR4	30	26MAR12	05MAY12																																																									
QL196	Leaky Cable Installation BR4	20	03APR12	02MAY12																																																									
<b>Adit Tunnel Excavation &amp; Tunnel Lining - W1</b>																																																													
QHS120284	Adit Excavation by Mech Excav first 7m -W1	53	21DEC10A	12MAR11A																																																									
QHS120285	Adit and Stilling Chamber Excavation - W1	48	14MAR11A	11JUN11A																																																									
QL089	Stilling chamber Lining - W1	36	17SEP11A	04NOV11A																																																									
QL090	Lining W1 (155m)	43	21NOV11A	05MAR12																																																									
QL091	Junction main tunnel W1	36	17FEB12A	29MAR12																																																									
QL092	Turning bay W1	30	17FEB12A	21MAY12																																																									
QL291	Leaky Cable Installation W1	11	30MAR12	16APR12																																																									
<b>Adit Tunnel Excavation &amp; Tunnel Lining - BR5</b>																																																													
QHS130275	Adit and Stilling Chamber Excavation - BR5	37	12JUL11A	05AUG11A																																																									
QL082	Stilling chamber Lining - BR5	36	22DEC11A	31JAN12A																																																									
QL0821	Lining BR5 (11m)	4	16APR12	19APR12																																																									
QL083	Intersection BR6 / BR5 (14m)	29	20APR12	25MAY12																																																									
QL283	Leaky Cable Installation BR5	6	26MAY12	01JUN12																																																									
<b>Adit Tunnel Excavation &amp; Tunnel Lining - BR6</b>																																																													
QS140295	Adit Excavation by Mech Excav first 7m -(BR6)	53	22NOV10A	11FEB11A																																																									
QHS14042	Adit Excavation CH7 - CH247 (240m) -(BR6)	91	12FEB11A	07JUN11A																																																									
QHS14044	Adit Excavation CH247 - CH407 (160m) -(BR6)	52	08JUN11A	03SEP11A																																																									
QHS14046	Adit Excavation CH407 - CH495 (88m) -(BR6)	28	05SEP11A	12NOV11A																																																									
QHS14048	Adit Excavation CH495 - CH552 (57m) -(BR6)	15	14NOV11A	10DEC11A																																																									
QHS14049	Stilling Chamber Excavation Excavation (BR6)	18	12DEC11A	03FEB12A																																																									
QL081	Stilling chamber Lining - BR6	30	21FEB12	26MAR12																																																									
QL087	Turning bay BR6	30	27FEB12	31MAR12																																																									
QPS145100	Insitu Lining & Grouting, 6m (BR6)	6	27MAR12	02APR12																																																									
QL084	Lining BR6 (frm BR6 back to BR5) F1 - (84m)	27	03APR12	10MAY12																																																									
QL085	Lining BR6 (frm BR6 back to BR5) F2 - (84m)	26	11APR12	12MAY12																																																									
QL0871	Lining BR6 - (from BR5 to Main Tunnel) F1 (178m)	39	11MAY12	26JUN12																																																									
QL0872	Lining BR6 - (from BR5 to Main Tunnel) F2 (178m)	32	14MAY12	19JUN12																																																									
QL086	Junction main tunnel BR6	36	19MAY12	30JUN12																																																									
QL286	Leaky Cable Installation BR6	25	03JUL12	31JUL12																																																									
<b>Adit Tunnel Excavation &amp; Tunnel Lining - W3</b>																																																													
QS150205	Adit Excavation by Mech Excav first 7m -(W3)	59	25OCT10A	22FEB11A																																																									
S150192	Adit Grouting & Rock Dowel Installation - (W3)	12	25OCT10A	06NOV10A																																																									
S150194	Removal of Segments - (W3)	5	08NOV10A	12NOV10A																																																									
QHS150353	Adit Excavation CH7 - CH147 (140m) - (W3)	72	23FEB11A	19MAY11A																																																									
QHS150355	Adit Excavation CH147 - CH324 (177m) - (W3)	53	20MAY11A	07NOV11A																																																									
QHS150357	Still Chamber Excavation - (W3)	18	08NOV11A	01DEC11A																																																									

2007					2008					2009					2010					2011					2012																																				
N	D	J	F	M	A	M	J	J	A	S	O	N	D	J	F	M	A	M	J	J	A	S	O	N	D	J	F	M	A	M	J	J	A	S	O	N	D	J	F	M	A	M	J	J	A	S	O	N	D	J	F	M	A	M	J	J	A	S	O	N	D

Start Date 30NOV07  
Finish Date 27NOV12  
Data Date 21FEB12  
Run Date 02APR12 09:04

 Early Bar  
 Progress Bar  
 Critical Activity

202A  
Sheet 6 of 48  
**Design & Construction of HK. West Drainage Tunnel**  
Contract No. DC/2007/10

WORKS PROGRAMME APPROVAL HISTORY			
Date	Revision	Checked	Approved
13JAN09	Approved Works Programme # 1	SOR	804B
27MAR09	Approved Works Programme # 2	SOR	9032
10DEC10	Approved Works Programme # 3	SOR	9116
01MAR10	Approved Works Programme # 4	SOR	003A
25FEB11	Approved Works Programme # 5	SOR	301F
29JUN11	Approved Works Programme # 6	SOR	WP6C

Act ID	Activity Description	Orig Dur	Anticipated Start	Anticipated Finish	2007 2008 2009 2010 2011 2012																																																			
					2007					2008					2009					2010					2011					2012																										
					N	D	J	F	M	A	M	J	J	A	S	O	N	D	J	F	M	A	M	J	J	A	S	O	N	D	J	F	M	A	M	J	J	A	S	O	N	D	J	F	M	A	M	J	J	A	S	O	N	D		
<b>Adit Tunnel Excavation &amp; Tunnel Lining - W3</b>																																																								
QL077	Lining W3 (296m)	45	23DEC11A	24FEB12																																																				
QL078	Junction main tunnel W3	36	21FEB12	02APR12																																																				
QL079	Turning bay W3	30	09MAR12	17APR12																																																				
QL278	Leaky Cable Installation W3	17	03APR12	26APR12																																																				
<b>Adit Tunnel Excavation &amp; Tunnel Lining - B2</b>																																																								
S160121	Adit Grouting & Rock Dowel Installation - (B2)	8	13OCT10A	17NOV10A																																																				
QHS160284	Adit Excavation by Mech Excav first 7m - B2	62	15OCT10A	19JAN11A																																																				
S160123	Removal of Segments - (B2)	5	18NOV10A	04JAN11A																																																				
QHS160285	Adit and Stilling Chamber Excavation - B2	92	21JAN11A	28JUL11A																																																				
QL072	Stilling chamber Lining - B2	36	30SEP11A	11NOV11A																																																				
QL075	Turning bay B2	30	22NOV11A	17FEB12A																																																				
QL073	Lining B2 (250m)	54	14DEC11A	29FEB12																																																				
QL074	Junction main tunnel B2	36	01MAR12	16APR12																																																				
QL274	Leaky Cable Installation B2	15	17APR12	05MAY12																																																				
<b>Adit Tunnel Excavation &amp; Tunnel Lining - MA14</b>																																																								
S170471	Adit Grouting & Rock Dowel Installation - (MA14)	8	27SEP10A	15OCT10A																																																				
S170473	Removal of Segments - (MA14)	5	18OCT10A	16NOV10A																																																				
S170475	Probe Drilling & Mechanical Excavation - (MA14)	68	17NOV10A	29DEC10A																																																				
S170477	Temp Facilities & Blast Door Installation-(MA14)	29	17NOV10A	29DEC10A																																																				
S170490	Adit Excavation by Drill & Blast (MA14)	26	30DEC10A	19FEB11A																																																				
S170540	Stilling Chamber Enlargement (MA14)	18	28FEB11A	12MAR11A																																																				
QL068	Stilling chamber Lining - MA14	36	16DEC11A	17JAN12A																																																				
QL069	Lining MA14 (63m)	23	06FEB12A	02MAR12																																																				
QL070	Junction main tunnel MA14	36	21FEB12	02APR12																																																				
QL279	Leaky Cable Installation MA14	8	03APR12	16APR12																																																				
<b>Adit Tunnel Excavation &amp; Tunnel Lining - MA15</b>																																																								
S180461	Adit Grouting & Rock Dowel Installation - (MA15)	8	13SEP10A	09OCT10A																																																				
S180463	Removal of Segments - (MA15)	5	11OCT10A	30OCT10A																																																				
S180465	Probe Drilling & Mechanical Excavation - (MA15)	62	01NOV10A	10DEC10A																																																				
S180467	Temp Facilities & Blast Door Installation-(MA15)	29	06NOV10A	10DEC10A																																																				
S180490	Adit Excavation by Drill & Blast CH07-87 (MA15)	29	11DEC10A	17JAN11A																																																				
S180500	Stilling Chamber Enlargement (MA15)	18	18JAN11A	14FEB11A																																																				
QL064	Stilling chamber Lining - MA15	36	10JUN11A	08AUG11A																																																				
QL065	Lining MA15 (67m)	29	15AUG11A	15OCT11A																																																				
QL066	Junction main tunnel MA15	36	12NOV11A	20JAN12A																																																				
QL266	Leaky Cable Installation MA15	8	21FEB12	29FEB12																																																				
<b>Adit Tunnel Excavation &amp; Tunnel Lining - MA17</b>																																																								
S190495	Adit Grouting & Rock Dowel Installation - (MA17)	8	26AUG10A	11SEP10A																																																				
S190497	Removal of Segments - (MA17)	5	13SEP10A	18SEP10A																																																				
S190510	Probe Drilling & Mechanical Excavation - (MA17)	62	20SEP10A	21DEC10A																																																				
QHS190615	Adit and Stilling Chamber Excavation - MA17	53	22DEC10A	28FEB11A																																																				
QL061	Lining MA17 (73m)	23	29MAR12	30APR12																																																				
QL062	Junction main tunnel MA17	36	16APR12	29MAY12																																																				
QL262	Leaky Cable Installation MA17	8	30MAY12	07JUN12																																																				
<b>Adit Tunnel Excavation &amp; Tunnel Lining - M3</b>																																																								
S200391	Adit Grouting & Rock Dowel Installation - (M3)	8	25AUG10A	04SEP10A																																																				

Start Date 30NOV07  
Finish Date 27NOV12  
Data Date 21FEB12  
Run Date 02APR12 09:04

Early Bar  
Progress Bar  
Critical Activity

202A  
Sheet 7 of 48  
Design & Construction of HK. West Drainage Tunnel  
Contract No. DC/2007/10

WORKS PROGRAMME APPROVAL HISTORY			
Date	Revision	Checked	Approved
13JAN09	Approved Works Programme # 1	SOR	804B
27MAR09	Approved Works Programme # 2	SOR	9032
10DEC10	Approved Works Programme # 3	SOR	9116
01MAR10	Approved Works Programme # 4	SOR	003A
25FEB11	Approved Works Programme # 5	SOR	301F
29JUN11	Approved Works Programme # 6	SOR	WP6C









Act ID	Activity Description	Orig Dur	Anticipated Start	Anticipated Finish	2007												2008												2009												2010												2011												2012											
					2007												2008												2009												2010												2011												2012											
					N	D	J	F	M	A	M	J	J	A	S	O	N	D	J	F	M	A	M	J	J	A	S	O	N	D	J	F	M	A	M	J	J	A	S	O	N	D	J	F	M	A	M	J	J	A	S	O	N	D	J	F	M	A	M	J	J	A	S	O	N	D	J	F	M	A	M	J	J	A	S	O
<b>Adit Tunnel Excavation &amp; Tunnel Lining - SM1</b>																																																																												
QL001	Stilling chamber Lining - SM 1	48	19AUG11A	23SEP11A																																																																								
QL0011	Lining SM1-Still Chamber to PFLR1 Junction(162m)	42	15SEP11A	29DEC11A																																																																								
QS321410	Insitu Lining - 7.16m ID2.3 (SM1)	6	10OCT11A	10NOV11A																																																																								
QL007	Turning bay SM1	30	18NOV11A	22DEC11A																																																																								
QL0051	Lining SM1 -SM1-PFLR1 Junction-Main Tunnel(354m)	33	30DEC11A	23MAR12																																																																								
QL002	Intersection PLFR 1 / SM 1	36	01FEB12A	13MAR12																																																																								
QL006	Junction main tunnel SM1	36	21FEB12	02APR12																																																																								
QL206	Leaky Cable Installation SM1	25	03APR12	08MAY12																																																																								
<b>CC5-PART OF SECTION 1 OF THE WORKS (EAST PORTAL)</b>																																																																												
<b>Construction</b>																																																																												
<b>Site Installation - Phase 1</b>																																																																												
EPC0100	Tree Felling & Transplanting-(EP)	43	08MAR08A	10MAY08A																																																																								
EPC0110	Boulder Splitting & Stabilization-(EP)	100	10MAR08A	14AUG08A																																																																								
EPC0120	Slope Upgrading Works (Feature No. 11SE-A/C850)	122	31MAR08A	13MAY08A																																																																								
EPC0122	VO/Claim # 01-Apr/08 Incl Weather Black Signl-EP	1	19APR08A	19APR08A																																																																								
EPC0130	Portal Excav Incl pipe roofing(strength works)	46	14MAY08A	20MAY08A																																																																								
EPC0140	Formation of Tunnel Portal	10	21MAY08A	10JUN08A																																																																								
EPC0147	VO/Claim # 02-Jun/08 Incl Weather Black Signl-EP	1	07JUN08A	07JUN08A																																																																								
EPC0142	Excavate top heading up to Rib 20(Maint Chamber)	46	11JUN08A	11AUG08A																																																																								
EPC0149	VO/Claim # 04-Jun/08 Typhoon FENGSHEN Sig 8 - EP	2	24JUN08A	25JUN08A																																																																								
EPC0151	VO/Claim # 07-Aug/08 Typhoon KAMMURI Sig 8 - EP	1	06AUG08A	06AUG08A																																																																								
EPC0144	Top Head Trial Blasts 3 nos Intake Chamber(CH27)	3	15AUG08A	18AUG08A																																																																								
EPC0190	Construct Temp Cofferdam	36	18AUG08A	03OCT08A																																																																								
EPC0146	Bottom Bench Excavation up to Rib 20	36	21AUG08A	08OCT08A																																																																								
EPC0153	VO/Claim # 07-Aug/08 Typhoon NURI Sig 8 - EP	2	22AUG08A	23AUG08A																																																																								
EPC0155	VO/Claim # 08-Sep/08 Typhoon HAGUPIT Sig 8 - EP	2	23SEP08A	24SEP08A																																																																								
EPC0148	Learn Curve Blasts Intake Chamber (CH27-44)	21	09OCT08A	01NOV08A																																																																								
EPC0150	Excav Launch Tunnel by D&B (CH44-CH179)	80	03NOV08A	04FEB09A																																																																								
EPC0180	Excav for Intake Tunnel by D&B	14	17NOV08A	06FEB09A																																																																								
EPC0210	Construct Shaft Flood protection wall(A,C&D)	18	17NOV08A	13DEC08A																																																																								
EPC0240	Excav & Strut Intake shaft down to +54mpd	10	08DEC08A	18DEC08A																																																																								
EPC0250	Complete Excav & Strut Intake Shaft to +47.3mpd	17	19DEC08A	05FEB09A																																																																								
EPC0152	Enlarge Launch Tunnel D&B Top (CH133-CH163)	35	22DEC08A	03FEB09A																																																																								
EPC0260	Cut Pipe Pile Side A	4	06FEB09A	10FEB09A																																																																								
EPC0262	Construct Flood Prot wall(B)	6	11FEB09A	14FEB09A																																																																								
<b>Preliminary Works</b>																																																																												
EPA0110	Mobilization-(EP)	13	30NOV07A	14DEC07A																																																																								
EPA0120	Initial Record Survey	13	30NOV07A	30DEC07A																																																																								
EPA0140	Office & Workshop setup (1st Stage)	13	30NOV07A	14DEC07A																																																																								
EPA0175	Provision of High Voltage line by HEC (Pillar 1)	133	07JAN08A	10OCT08A																																																																								
EPA0170	Noise Barriers / Hoarding	71	23JAN08A	11MAR08A																																																																								
EPA0160	Utilities Diversion-(EP)	50	25JAN08A	07APR08A																																																																								
EPA0130	Site Clearance & Temporary Access	81	11FEB08A	11MAR08A																																																																								
EPA0150	Office & Workshop setup (2nd Stage)	51	08MAY08A	11JUL08A																																																																								

2007												2008												2009												2010												2011												2012											
N	D	J	F	M	A	M	J	J	A	S	O	N	D	J	F	M	A	M	J	J	A	S	O	N	D	J	F	M	A	M	J	J	A	S	O	N	D	J	F	M	A	M	J	J	A	S	O	N	D	J	F	M	A	M	J	J	A	S	O	N	D										

Start Date 30NOV07  
Finish Date 27NOV12  
Data Date 21FEB12  
Run Date 02APR12 09:04




Early Bar  
Progress Bar  
Critical Activity

202A Sheet 11 of 48  
**Design & Construction of HK. West Drainage Tunnel**  
Contract No. DC/2007/10

WORKS PROGRAMME APPROVAL HISTORY			
Date	Revision	Checked	Approved
13JAN09	Approved Works Programme # 1	SOR	804B
27MAR09	Approved Works Programme # 2	SOR	9032
10DEC10	Approved Works Programme # 3	SOR	9116
01MAR10	Approved Works Programme # 4	SOR	003A
25FEB11	Approved Works Programme # 5	SOR	301F
29JUN11	Approved Works Programme # 6	SOR	WP6C

Act ID	Activity Description	Orig Dur	Anticipated Start	Anticipated Finish	2007												2008												2009												2010												2011												2012											
					2007												2008												2009												2010												2011												2012											
					N	D	J	F	M	A	M	J	J	A	S	O	N	D	J	F	M	A	M	J	J	A	S	O	N	D	J	F	M	A	M	J	J	A	S	O	N	D	J	F	M	A	M	J	J	A	S	O	N	D	J	F	M	A	M	J	J	A	S	O	N	D										
<b>Site Installation - Phase 2</b>																																																																												
EPA0260	Construct Tower Crane Foundation	27	22DEC08A	04FEB09A																									■																																															
EPA0216	Construct Maint Chamber Invert Slab CH2 - CH27	51	12JAN09A	05FEB09A																									■																																															
EPA0225	Construct Intake Chamber Invert Slab CH27 - CH44	38	02FEB09A	06FEB09A																									■																																															
EPA0265	Tower Crane Installation & Testing	8	05FEB09A	06MAR09A																									■																																															
EPA0235	Construct Main Tunnel Invert Slab CH44 - CH175	43	07FEB09A	03MAR09A																									■																																															
EPA0405	Track Set for TBM Driving	6	21FEB09A	27FEB09A																									■																																															
EPA0245	Construct Intake Tunnel & Shaft Invert Slab	8	06MAR09A	12MAR09A																									■																																															
EPA0390	VSL Jacking Assembly Installation	13	07MAR09A	21MAR09A																									■																																															
EPA0300	Spoil Tremie/Storage Construction	60	13MAR09A	01AUG09A																									■																																															
EPA0400	Cutterhead and Shield Assembly	24	23MAR09A	24APR09A																									■																																															
EPA0500	Construct Tower Frame T1 & T2	12	21APR09A	22MAY09A																									■																																															
EPA0420	Assemble Backups up to 10B	36	27APR09A	31MAY09A																									■																																															
EPA0310	Construct Spoil Storage Noise Enclosure	10	20MAY09A	01AUG09A																									■																																															
EPA0320	Construct Portal Entrance Noise Enclosure	9	20MAY09A	31MAY09A																									■																																															
EPA0505	Install Conveyor T1 & T2	21	23MAY09A	05AUG09A																									■																																															
EPA0330	Construct Stub Train Track Noise Enclosure	7	02JUL09A	10AUG09A																									■																																															
EPA0450	Assemble Backups up to 13B	32	10JUL09A	05AUG09A																									■																																															
EPA0332	VO/Claim # 29-Jul/09 Typhoon MOLAVE Sig 8 - EP	1	18JUL09A	18JUL09A																																																																								
EPA0334	VO/Claim # 38-Aug/09 Typhoon GONI Sig 8 - EP	1	04AUG09A	04AUG09A																																																																								
EPA0336	VO/Claim # 41-Sep/09 Typhoon KOPPU Sig 8 - EP	1	14SEP09A	14SEP09A																																																																								
<b>Application for Permit / Licences / Supplies</b>																																																																												
EPB0140	Water Supply-(EP)	66	10DEC07A	30APR08A	■																																																																							
EPB0150	Power Supply for External Works (Low Voltage)	66	10DEC07A	10OCT08A	■																																																																							
EPB0100	Further Environmental Permit	25	15DEC07A	16JAN08A	■																																																																							
EPB0110	Site Layout Plan	8	15DEC07A	24DEC07A	■																																																																							
EPB0160	Power Supply for Tunnel Works	279	07JAN08A	10OCT08A	■																																																																							
EPB0170	Boulder Survey Report to GEO for Approval	37	14JAN08A	13JUN08A	■																																																																							
EPB0180	Environmental Baseline Monitoring	10	12FEB08A	29FEB08A	■																																																																							
EPB0120	Permit for Tree Felling & Transplanting	47	18FEB08A	07MAR08A	■																																																																							
<b>East Portal River Channel Works</b>																																																																												
EPC0220	Extd Div Pipe & Cons Access Rd extsn TH Stream	12	24NOV08A	06DEC08A	■																																																																							
EPC0230	Mobilize for Soldier Pile & King post Const	6	08DEC08A	13DEC08A	■																																																																							
EPC0270	Soldier Pile & King Post Construction	60	15DEC08A	25FEB09A	■																																																																							
EPC0275	Construct upstream head wall for twin pipes	12	23JAN09A	28FEB09A	■																																																																							
EPC0280	Install 1.2m twin pipe & 800m pipe diversion	50	06FEB09A	31MAR09A	■																																																																							
EPC0282	VO/Claim # 22-Mar/09 Flood Prev Incl weather-EP	3	04MAR09A	06MAR09A	■																																																																							
EPC0300	Curtain grouting	30	24MAR09A	09APR09A	■																																																																							
EPC0305	Install West Piles & Temporary Decking	25	04MAY09A	14MAY09A	■																																																																							
EPC0310	Rock Excav&Slope Stabilization North Side Row A	49	06MAY09A	08JUL09A	■																																																																							
EPC0311	Rock Excav&Slope Stabilization North Side Row B	80	09JUL09A	12DEC09A	■																																																																							
EPC0320	Shallow Excavation at river bed	36	11JUL09A	21OCT09A	■																																																																							
EPC0322	Middle Excav&Install struts at river bed	48	22OCT09A	19NOV09A	■																																																																							
EPC0324	Deep Excav&Install struts at river bed	60	20NOV09A	15DEC09A	■																																																																							
EPC0330	Lower River Channel Structure Constr	83	11JAN10A	04MAY10A	■																																																																							
EPC0350	Upper River Channel Structure Constr	84	05MAY10A	24AUG10A	■																																																																							

2007												2008												2009												2010												2011												2012											
N	D	J	F	M	A	M	J	J	A	S	O	N	D	J	F	M	A	M	J	J	A	S	O	N	D	J	F	M	A	M	J	J	A	S	O	N	D	J	F	M	A	M	J	J	A	S	O	N	D	J	F	M	A	M	J	J	A	S	O	N	D										

Start Date	30NOV07		Early Bar
Finish Date	27NOV12		Progress Bar
Data Date	21FEB12		Critical Activity
Run Date	02APR12 09:04		

202A

Sheet 12 of 48

**Design & Construction of HK. West Drainage Tunnel**  
Contract No. DC/2007/10

WORKS PROGRAMME APPROVAL HISTORY			
Date	Revision	Checked	Approved
13JAN09	Approved Works Programme # 1	SOR	804B
27MAR09	Approved Works Programme # 2	SOR	9032
10DEC10	Approved Works Programme # 3	SOR	9116
01MAR10	Approved Works Programme # 4	SOR	003A
25FEB11	Approved Works Programme # 5	SOR	301F
29JUN11	Approved Works Programme # 6	SOR	WP6C





Act ID	Activity Description	Orig Dur	Anticipated Start	Anticipated Finish	2007												2008												2009												2010												2011												2012																																																																																			
					2007												2008												2009												2010												2011												2012																																																																																			
					N	D	J	F	M	A	M	J	J	A	S	O	N	D	J	F	M	A	M	J	J	A	S	O	N	D	J	F	M	A	M	J	J	A	S	O	N	D	J	F	M	A	M	J	J	A	S	O	N	D	J	F	M	A	M	J	J	A	S	O	N	D																																																																																		
<b>CC6-PART OF SECTION 1 OF THE WORKS (WEST PORTAL)</b>																																																																																																																																																				
<b>Construction</b>																																																																																																																																																				
<b>Site Installation - Phase 1</b>																																																																																																																																																				
WPB0050	Obtain permit Install Env Base Monitor Inst(WP)	12	15JAN08A	29JAN08A																																																																																																																																																
WPB0056	Conduct Tree Survey (WP)	6	15JAN08A	18JAN08A																																																																																																																																																
WPB0140	Removal portion of DSD wall	6	18JAN08A	24JAN08A																																																																																																																																																
WPB0120	Site Hoarding , Fencing and Entrance	15	21JAN08A	07MAR08A																																																																																																																																																
WPB0280	Contractor Office Erection-(WP)	34	21JAN08A	16MAY08A																																																																																																																																																
WPB0052	Install ENV Instruments & start monitor(WP)	12	30JAN08A	23MAR08A																																																																																																																																																
WPB0180	Site Haul Road & Temporary Drainage	30	04FEB08A	12MAR08A																																																																																																																																																
WPB0160	Sedimentation Tank - external work & wheel wash	27	25FEB08A	19MAR08A																																																																																																																																																
WPB0058	P & S Tree Survey Report (WP)	6	01MAR08A	15MAR08A																																																																																																																																																
WPB0240	Water Connection Dia.100mm	21	03MAR08A	15APR08A																																																																																																																																																
WPB0260	400 KVA Power ( External Works ) Supply	21	03MAR08A	15APR08A																																																																																																																																																
WPB0059	Form Slope Access under Cyberport Bridge	20	08MAR08A	03APR08A																																																																																																																																																
WPB0220	Utilities Diversion-(WP)	21	13MAR08A	20MAR08A																																																																																																																																																
WPB0054	P & S Environmental Base Monitoring Report(WP)	12	28MAR08A	11APR08A																																																																																																																																																
WPC0100	Workshop-(WP)	13	21APR08A	11JUL08A																																																																																																																																																
WPB0300	Engineer Office Erection	32	03MAY08A	08AUG08A																																																																																																																																																
<b>Sea Wall &amp; Temporary Pier Construction</b>																																																																																																																																																				
WPE0100	Echo Sounding & Seabed Condition ( Diver )Survey	12	07JAN08A	12APR08A																																																																																																																																																
WPE0160	Connection of Temp Drainage Diversion Stage 1	21	15APR08A	13MAY08A																																																																																																																																																
WPE0120	Mobilisation of Marine Work Subcon-(WP)	8	18APR08A	23APR08A																																																																																																																																																
WPE0122	Prepare Marine Notice & Approval	29	18APR08A	23MAY08A																																																																																																																																																
WPE0126	Silt Curtain Preparation	27	18APR08A	21MAY08A																																																																																																																																																
WPE0128	Marine Pile Procurement	13	18APR08A	30APR08A																																																																																																																																																
WPE0130	Sea Wall Block Procurement	48	18APR08A	18JUN08A																																																																																																																																																
WPE0124	Prepare Silt Curtain Submission & Approval	28	13MAY08A	26MAY08A																																																																																																																																																
WPE0132	Silt Curtain Installation	5	24MAY08A	29MAY08A																																																																																																																																																
WPE0135	Install temporary working platform	16	24MAY08A	18JUN08A																																																																																																																																																
WPE0133	Seabed Clearance	16	30MAY08A	20JUN08A																																																																																																																																																
WPE0180	Remove Armour Rock from Existing Seawall	12	30MAY08A	06AUG08A																																																																																																																																																
WPE0200	Seabed formation prepartation to -10.7mpd	15	30MAY08A	11AUG08A																																																																																																																																																
WPE0137	Marine Pipe Pile Installation	32	19JUN08A	30JUL08A																																																																																																																																																
WPE0134	Found of vertical & sloping seawall rockfill	16	21JUN08A	11JUL08A																																																																																																																																																
WPE0140	Construct Bay 5 to 10	54	28JUN08A	06SEP08A																																																																																																																																																
WPE0142	Construct Bay 6 to 9 & 7A	54	28JUN08A	06SEP08A																																																																																																																																																
WPE0220	Level Seabed w/ rock Fill	11	12AUG08A	25AUG08A																																																																																																																																																
WPE0240	Install Precast Seawall Blocks & Armour Rock	70	13AUG08A	04OCT08A																																																																																																																																																
WPE0144	Construct Sloping Seawall	15	01SEP08A	08NOV08A																																																																																																																																																
WPE0146	General Fill up to +3mPD	23	01SEP08A	15NOV08A																																																																																																																																																
WPE0300	Construction of 10T Bollard and In-situ Coping	25	23SEP08A	12NOV08A																																																																																																																																																
WPE0162	Connection of Temp Drainage Diversion Stage 2	25	10OCT08A	15NOV08A																																																																																																																																																
<b>Slope Stabilization (C976)</b>																																																																																																																																																				
WPB0060	Site Clearance & Const Plant Access to +22mPD	20	04APR08A	30APR08A																																																																																																																																																
WPB0062	VO/Claim # 01-Apr/08 Incl Weather Black Signl-WP	1	19APR08A	19APR08A																																																																																																																																																

2007												2008												2009												2010												2011												2012											
N	D	J	F	M	A	M	J	J	A	S	O	N	D	J	F	M	A	M	J	J	A	S	O	N	D	J	F	M	A	M	J	J	A	S	O	N	D	J	F	M	A	M	J	J	A	S	O	N	D	J	F	M	A	M	J	J	A	S	O	N	D										

Start Date 30NOV07  
Finish Date 27NOV12  
Data Date 21FEB12  
Run Date 02APR12 09:04

Early Bar  
Progress Bar  
Critical Activity

202A  
Sheet 14 of 48  
Design & Construction of HK. West Drainage Tunnel  
Contract No. DC/2007/10




WORKS PROGRAMME APPROVAL HISTORY			
Date	Revision	Checked	Approved
13JAN09	Approved Works Programme # 1	SOR	804B
27MAR09	Approved Works Programme # 2	SOR	9032
10DEC10	Approved Works Programme # 3	SOR	9116
01MAR10	Approved Works Programme # 4	SOR	003A
25FEB11	Approved Works Programme # 5	SOR	301F
29JUN11	Approved Works Programme # 6	SOR	WP6C



Act ID	Activity Description	Orig Dur	Anticipated Start	Anticipated Finish	2007												2008												2009												2010												2011												2012											
					2007												2008												2009												2010												2011												2012											
					N	D	J	F	M	A	M	J	J	A	S	O	N	D	J	F	M	A	M	J	J	A	S	O	N	D	J	F	M	A	M	J	J	A	S	O	N	D	J	F	M	A	M	J	J	A	S	O	N	D	J	F	M	A	M	J	J	A	S	O	N	D	J	F	M	A	M	J	J	A	S	O
<b>Site Installation - Phase 2</b>																																																																												
WPT0890	Tower Crane Test & Commissioning	4	24NOV08A	25NOV08A																																																																								
WPT0685	Sheet Pile Tie Back North Side	15	28NOV08A	20DEC08A																																																																								
WPT0689	Sheet Pile Tie Back South Side	15	08DEC08A	30DEC08A																																																																								
WPT0687	Backfill to +4.0mpd North Side	4	15DEC08A	24DEC08A																																																																								
WPT0700	Stage 1 (TBM Assembly pit Area 1)	97	15DEC08A	06JAN09A																																																																								
WPT1030	Site installation Temporary Wet Sep	5	15DEC08A	19DEC08A																																																																								
WPT0940	Piling for foundation of Steel Bridge	5	18DEC08A	27DEC08A																																																																								
WPT0693	Diwidag on Sea Wall side Stage 1	7	22DEC08A	27DEC08A																																																																								
WPT0892	Tower Crane Foundation Repair	8	23DEC08A	03JAN09A																																																																								
WPT0300	Foundation(6 Piles) Seawall side	11	29DEC08A	10JAN09A																																																																								
WPT0950	Installation of Steel Bridge	8	29DEC08A	07JAN09A																																																																								
WPT0694	Backfill to +5.7mpd South Side	5	31DEC08A	06JAN09A																																																																								
WPT0703	Stage 1 (South side along DSD Bldg Area 1a)	7	03JAN09A	10JAN09A																																																																								
WPT0894	Capping Beam	10	05JAN09A	15JAN09A																																																																								
WPT1170	Pipes and electrical lines Installation	44	08JAN09A	05MAR09A																																																																								
WPT0715	Spoil Basin Excavation + Concrete	11	09JAN09A	05MAR09A																																																																								
WPT0590	Platform construction	8	12JAN09A	20JAN09A																																																																								
WPT0695	Diwidag on Sea Wall side Stage 2	2	12JAN09A	13JAN09A																																																																								
WPT0705	Stage 2 from Area 1 to Below Bridge	16	12JAN09A	02FEB09A																																																																								
WPT0310	Capping Beam	7	14JAN09A	21JAN09A																																																																								
WPT0855	Fabrication in Europe + factory testing	42	14JAN09A	24FEB09A																																																																								
WPT0896	Tower Crane Re-erection	1	16JAN09A	16JAN09A																																																																								
WPT0898	Tower Crane Test & Commissioning	3	17JAN09A	20JAN09A																																																																								
WPT0592	Foundation for 25 T crane external of shaft area	4	21JAN09A	24JAN09A																																																																								
WPT0311	Complete Backfill on Sea side	2	22JAN09A	23JAN09A																																																																								
WPT0594	Steel Frame Erection beside cyberport bridge	9	29JAN09A	07FEB09A																																																																								
WPT1090	Set up equipment below bridge	25	29JAN09A	26FEB09A																																																																								
WPT0800	Install Rails A1&2/Bay1&2	6	06FEB09A	12FEB09A																																																																								
WPT1770	Install noise cover along Cyberport bridge area	12	09FEB09A	21MAR09A																																																																								
WPT0109	Mobilize 500T Crane for TBM unloading & assembly	3	12FEB09A	12FEB09A																																																																								
WPT0114	Shield assembly on the portal	18	13FEB09A	05MAR09A																																																																								
WPT1035	Site installation Permanent Wet Sep Stage 1	18	23FEB09A	14MAR09A																																																																								
WPT0857	Delivery to HongKong	30	25FEB09A	20APR09A																																																																								
WPT0120	Backup Unit(BU) 1to 8 assembly & transfer	15	26FEB09A	14MAR09A																																																																								
WPT0805	Install Rails Bay3+50m assemb&Transfer Shield	7	26FEB09A	05MAR09A																																																																								
WPT0717	Excavation & casting Spoil Basin Retaining wall	9	02MAR09A	20MAR09A																																																																								
WPT0116	SHIELD TRANSFER TO THE FACE INSIDE TUNNEL	2	06MAR09A	07MAR09A																																																																								
WPT0122	Transfer BU 1+S1 segments on track behind Shield	5	09MAR09A	13MAR09A																																																																								
WPT0710	Set up supports for segment in yard	12	09MAR09A	18MAR09A																																																																								
WPT0315	Conveyor Foundations for T4,T5 & Feeders	9	11MAR09A	31MAR09A																																																																								
WPT0330	T2, T3, T6 assembly on top of basin + sea side	23	13MAR09A	09MAY09A																																																																								
WPT0121	Temp Concrete slab for backup transfer to Shield	4	14MAR09A	18MAR09A																																																																								
WPT0130	Cabling - Piping on Gentries/Shield	21	14MAR09A	22APR09A																																																																								
WPT0320	T0 assembly	8	16MAR09A	24MAR09A																																																																								
WPT0707	Stage 3 - from bridge to retaining wall	5	16MAR09A	20MAR09A																																																																								

2007												2008												2009												2010												2011												2012											

Start Date	30NOV07
Finish Date	27NOV12
Data Date	21FEB12
Run Date	02APR12 09:04

	Early Bar
	Progress Bar
	Critical Activity

202A

Sheet 16 of 48

**Design & Construction of HK. West Drainage Tunnel**  
Contract No. DC/2007/10

WORKS PROGRAMME APPROVAL HISTORY			
Date	Revision	Checked	Approved
13JAN09	Approved Works Programme # 1	SOR	804B
27MAR09	Approved Works Programme # 2	SOR	9032
10DEC10	Approved Works Programme # 3	SOR	9116
01MAR10	Approved Works Programme # 4	SOR	003A
25FEB11	Approved Works Programme # 5	SOR	301F
29JUN11	Approved Works Programme # 6	SOR	WP6C



Act ID	Activity Description	Orig Dur	Anticipated Start	Anticipated Finish	2007												2008												2009												2010												2011												2012											
					2007												2008												2009												2010												2011												2012											
					N	D	J	F	M	A	M	J	J	A	S	O	N	D	J	F	M	A	M	J	J	A	S	O	N	D	J	F	M	A	M	J	J	A	S	O	N	D	J	F	M	A	M	J	J	A	S	O	N	D	J	F	M	A	M	J	J	A	S	O	N	D	J	F	M	A	M	J	J	A	S	O
<b>Site Installation - Phase 2</b>																																																																												
WPT1094	Set up return loop from tank from TBM(hot water)	8	16MAR09A	24APR09A																									■																																															
WPT0132	Finishing Assembly Works&Commissioning until BU8	10	19MAR09A	23MAR09A																									■																																															
WPT0750	Ring preparation and delivery for TBM test	3	19MAR09A	21MAR09A																									■																																															
WPT0719	Conveyor Separating Wall	24	21MAR09A	03APR09A																									■																																															
WPT1260	Temporary Ventilation Installation & Commission	21	21MAR09A	20APR09A																									■																																															
WPT0325	T0 assembly Commissioning	7	24MAR09A	24MAR09A																									■																																															
WPT0335	Belt cassette assembly Stage 1 for MCC Install	9	24MAR09A	28MAR09A																									■																																															
WPT0597	Steel Frame Erection Yard area25T crane Stage 2	10	28MAR09A	09APR09A																									■																																															
WPT0340	MCC Installation and cabling Stage 1	4	30MAR09A	02APR09A																									■																																															
WPT0375	T4, T5 assembly + Extractors for Backhoe	8	01APR09A	14APR09A																									■																																															
WPT1505	Civil works on yard+Temp transfer installation	13	09APR09A	29APR09A																									■																																															
WPT0670	25 T installation	5	12APR09A	03MAY09A																									■																																															
WPT0397	Start use of T4 to T6 Conveyor for Barge Loading	15	15APR09A	13MAY09A																									■																																															
WPT1190	Commissioning for Tunnel installation (air,water)	6	16APR09A	18APR09A																									■																																															
WPT1235	Compressors Installation and commissioning	9	16APR09A	18APR09A																									■																																															
WPT0140	BU9-13 Assembly during Initial Excavation	16	20APR09A	22APR09A																									■																																															
WPT0145	Stop For Full Assemb TBM + T1 Connection + facil	10	20APR09A	22APR09A																									■																																															
WPT0859	Install on Gantry BU 10B + Tests	5	20APR09A	30APR09A																									■																																															
WPT0430	T1 assembly	5	21APR09A	09MAY09A																									■																																															
WPT0770	Set up area for Pipes and rails	15	21APR09A	12MAY09A																									■																																															
WPT1037	Site installation Permanent Wet Sep Stage 2	12	21APR09A	09JUN09A																									■																																															
WPT1092	Set up Water tank & Booster pumps	3	21APR09A	23APR09A																									■																																															
WPT1096	Commissioning water booster pumps + chiller	3	23APR09A	24APR09A																									■																																															
WPT0155	Track installation during learning curve	13	30APR09A	08MAY09A																									■																																															
WPT0690	Test and Commissioning	6	04MAY09A	09MAY09A																									■																																															
WPT0492	Belt Cassette Assembly End parts Stage 2	2	06MAY09A	07MAY09A																									■																																															
WPT0450	T1 Belts installation + vulcanisation	2	08MAY09A	09MAY09A																									■																																															
WPT0470	CONVEYOR COMMISSIONING FULL INSTALLATION	2	10MAY09A	11MAY09A																									■																																															
WPT1780	Install Noise Cover below bridge	18	11MAY09A	12JUN09A																									■																																															
WPT0835	Fabrication + pumping test on site	10	19MAY09A	30MAY09A																									■																																															
WPT1790	Install Noise cover pea gravel/spoil basin side	26	19MAY09A	02JUL09A																									■																																															
WPT0837	Setup Equipment on site	10	01JUN09A	23JUN09A																									■																																															
WPT1262	Final Ventilation Installation & Commission	5	08JUN09A	13JUN09A																									■																																															
WPT1050	Commissioning	4	10JUN09A	13JUN09A																									■																																															
WPT1540	Pea Gravel tank into shaft install&Commissioning	6	12JUN09A	21JUN09A																									■																																															
WPT1265	Installation & Test of Chiller for ventilation	4	23JUN09A	26JUN09A																									■																																															
WPT1560	Pea Gravel transfer conveyors to the tank	7	24JUN09A	26JUN09A																									■																																															
WPT1562	VO/Claim # 29-Jul/09 Typhoon MOLAVE Sig 8 - WP	1	18JUL09A	18JUL09A																									■																																															
WPT1564	VO/Claim # 38-Aug/09 Typhoon GONI Sig 8 - WP	1	04AUG09A	04AUG09A																									■																																															
WPT1566	VO/Claim # 41-Sep/09 Typhoon KOPPU Sig 8 - WP	1	14SEP09A	14SEP09A																									■																																															
<b>Stilling Basin &amp; TBM Launch Shaft Construction</b>																																																																												
WPF0100	Predrill for Single Sheetpile Grid A-B	115	11AUG08A	30SEP08A													■																																																											
WPF0105	Predrill for Single Sheetpile Grid A-D	96	21AUG08A	17DEC08A													■																																																											
WPF0158	Sheetpiling Grid A-B	96	22SEP08A	06OCT08A													■																																																											
WPF0102	VO/Claim # 08-Sep/08 Typhoon HAGUPIT Sig 8 - WP	2	23SEP08A	24SEP08A													■																																																											

2007												2008												2009												2010												2011												2012											
N	D	J	F	M	A	M	J	J	A	S	O	N	D	J	F	M	A	M	J	J	A	S	O	N	D	J	F	M	A	M	J	J	A	S	O	N	D	J	F	M	A	M	J	J	A	S	O	N	D	J	F	M	A	M	J	J	A	S	O	N	D										

Start Date 30NOV07  
Finish Date 27NOV12  
Data Date 21FEB12  
Run Date 02APR12 09:04

■ Early Bar  
■ Progress Bar  
■ Critical Activity

202A  
Sheet 17 of 48  
Design & Construction of HK. West Drainage Tunnel  
Contract No. DC/2007/10




WORKS PROGRAMME APPROVAL HISTORY			
Date	Revision	Checked	Approved
13JAN09	Approved Works Programme # 1	SOR	804B
27MAR09	Approved Works Programme # 2	SOR	9032
10DEC10	Approved Works Programme # 3	SOR	9116
01MAR10	Approved Works Programme # 4	SOR	003A
25FEB11	Approved Works Programme # 5	SOR	301F
29JUN11	Approved Works Programme # 6	SOR	WP6C





Act ID	Activity Description	Orig Dur	Anticipated Start	Anticipated Finish	2007												2008												2009												2010												2011												2012											
					2007												2008												2009												2010												2011												2012											
					N	D	J	F	M	A	M	J	J	A	S	O	N	D	J	F	M	A	M	J	J	A	S	O	N	D	J	F	M	A	M	J	J	A	S	O	N	D	J	F	M	A	M	J	J	A	S	O	N	D	J	F	M	A	M	J	J	A	S	O	N	D	J	F	M	A	M	J	J	A	S	O
<b>Western Portal Finishing Works</b>																																																																												
WPR032	Dismantle conveyor T100, T200 (in tunl)(Day&Nigh	29	31JAN11A	08MAR11A																																																																								
WPR086	Break concrete pad of TBM gripping at entrance	15	31JAN11A	19FEB11A																																																																								
WPR076	Relocate track and switch at shaft	8	01FEB11A	12FEB11A																																																																								
WPR158	Water treatment works (Curtain grout, Deepwell)	46	22FEB11A	04MAY11A																																																																								
WPR040	Monorail system for muck skips	9	09MAR11A	18MAR11A																																																																								
WPR082	Erect new noise enclosure at end of shaft	12	09MAR11A	22MAR11A																																																																								
WPR043	Steel ramp for shuttle car	3	19MAR11A	22MAR11A																																																																								
WPR028	Dismantle conveyor T100 & booster inside Tunnel	29	21MAR11A	28APR11A																																																																								
WPR164	Excavate & ELS Still Basin(Ch10,704-Ch10,688) S1	52	28APR11A	06OCT11A																																																																								
WPR059	Dismantle noise enclosre from bridge to hillside	11	11MAY11A	23MAY11A																																																																								
WPR182	Excavate & ELS Still Basin(Ch10,668-Ch10,638)S3a	76	16MAY11A	06OCT11A																																																																								
WPR244	Arch Tunl Struct-wall&roof(Ch10,561-Ch10,554) A3	28	25JUN11A	23DEC11A																																																																								
WPR241	Arch Tunl Struct-wall&roof(Ch10,569-Ch10,561) A2	28	02JUL11A	17JAN12A																																																																								
WPR247	Arch Tunl Struct-wall&roof(Ch10,554-Ch10,544) A4	32	02JUL11A	28NOV11A																																																																								
WPR250	Arch Tunl Struct-wall&roof(Ch10,554-Ch10,533) A5	54	02JUL11A	17OCT11A																																																																								
WPR237	Arch Tunl Struct-wall&roof(Ch10,578-Ch10,569) A1	36	01AUG11A	16MAR12																																																																								
WPR173	Excavate & ELS Still Basin(Ch10,688-Ch10,668) S2	33	17AUG11A	06OCT11A																																																																								
WPR190	Excavate & ELS Still Basin(Ch10,638-Ch10,622)S3b	33	17AUG11A	06OCT11A																																																																								
WPR197	Still Basin Structure (Ch10,704-Ch10,688) S1	46	02SEP11A	16NOV11A																																																																								
WPR203	Still Basin Structure (Ch10,688-Ch10,668) S2	61	03OCT11A	29DEC11A																																																																								
WPR215	Still Basin Struc(Ch10,638-Ch10,622base/wall S3b	67	18OCT11A	13JAN12A																																																																								
WPR208	Still Basin Struc Ch10,668-Ch10,638base/Wall S3a	89	22OCT11A	20JAN12A																																																																								
WPR228	Rect Trans Structure (Ch10,596-Ch10,578) R3	66	02NOV11A	16JAN12A																																																																								
WPR079	Erect over head crane at shaft	8	22NOV11A	30NOV11A																																																																								
WPR095	Erect concrete secatot sys from surface to shaft	11	22NOV11A	03DEC11A																																																																								
WPR066	Modification of ventilation system	15	01DEC11A	17DEC11A																																																																								
WPR209	Still Basin Struc Ch10,668-Ch10,638roof/backfS3a	78	05DEC11A	29FEB12																																																																								
WPR216	Still Basin Struc(Ch10,638-Ch10,622roof/backfS3b	32	13DEC11A	21JAN12A																																																																								
WPR142	Reprovisioning works ( After ADIT excavation)	30	21FEB12	26MAR12																																																																								
WPR147	Site demolition	30	21FEB12	26MAR12																																																																								
WPR064	Removal 25t overhead gantry(120t crane mobilized	8	21FEB12	29FEB12																																																																								
WPR271	Access ramp	20	23MAR12	19APR12																																																																								
WPR254	Intermediate wall in Arch Tunnel	30	23MAR12	03MAY12																																																																								
WPR222	Rect Trans Structure (Ch10,622-Ch10,609) R1	36	27MAR12	14MAY12																																																																								
WPR256	Dismantle noise enclosure and Adit equipment	21	05APR12	04MAY12																																																																								
WPR258	Slope works & Retaining wall	36	21APR12	04JUN12																																																																								
WPR225	Rect Trans Structure (Ch10,609-Ch10,596) R2	36	15MAY12	26JUN12																																																																								
WPR267	Sea works	38	15MAY12	28JUN12																																																																								
WPR264	Reinstatement Final Finishing & Lanscaping	28	17MAY12	18JUN12																																																																								
WPR232	Access ramp - base slab & parapet	20	14JUN12	09JUL12																																																																								
WPR265	T&C West Portal	24	30AUG12	26SEP12																																																																								
WPR242	West Side - FSD Inspection	24	27SEP12	27OCT12																																																																								

2007												2008												2009												2010												2011												2012											
N	D	J	F	M	A	M	J	J	A	S	O	N	D	J	F	M	A	M	J	J	A	S	O	N	D	J	F	M	A	M	J	J	A	S	O	N	D	J	F	M	A	M	J	J	A	S	O	N	D	J	F	M	A	M	J	J	A	S	O	N	D										

Start Date	30NOV07		Early Bar
Finish Date	27NOV12		Progress Bar
Data Date	21FEB12		Critical Activity
Run Date	02APR12 09:04		

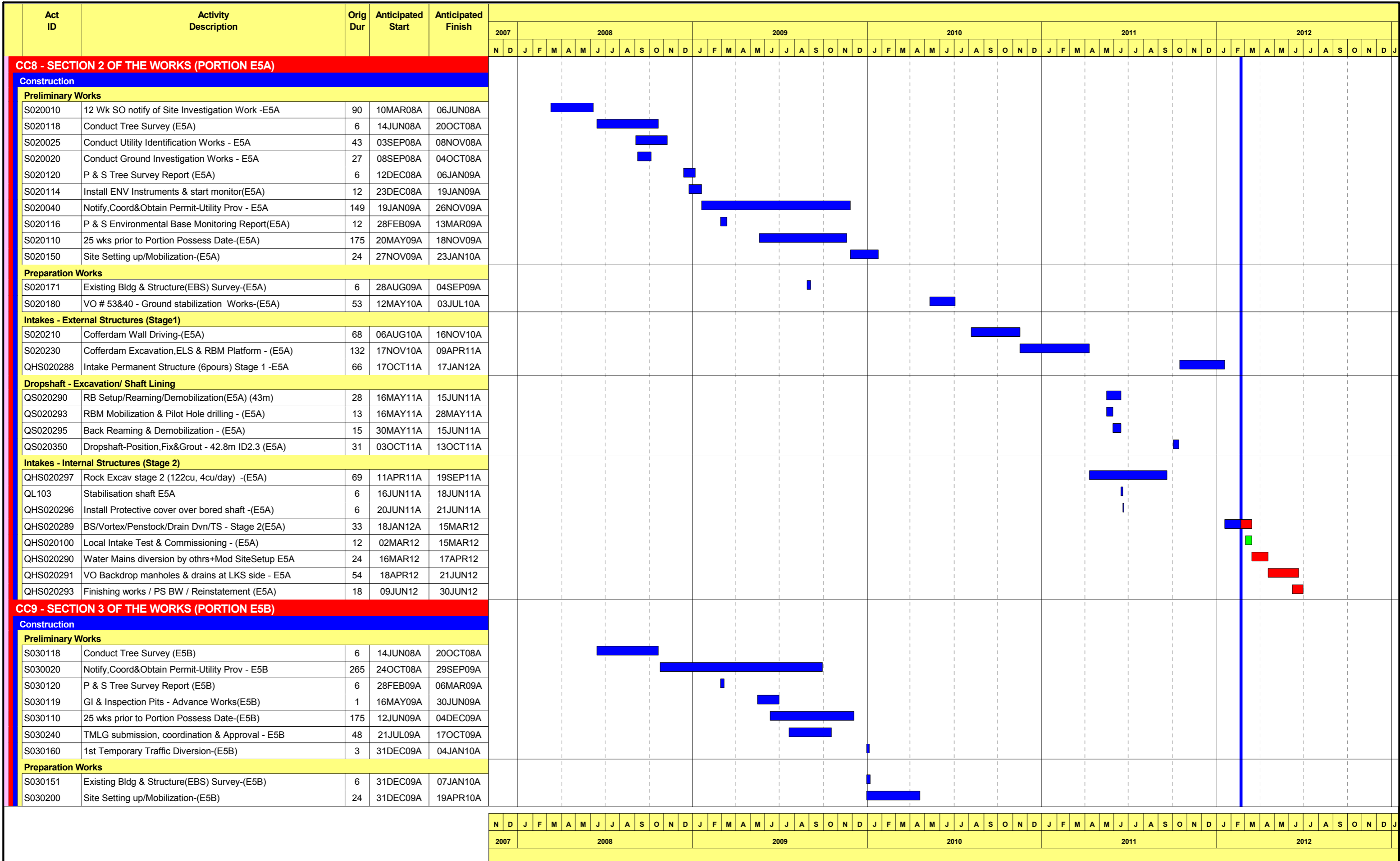
202A

Sheet 20 of 48

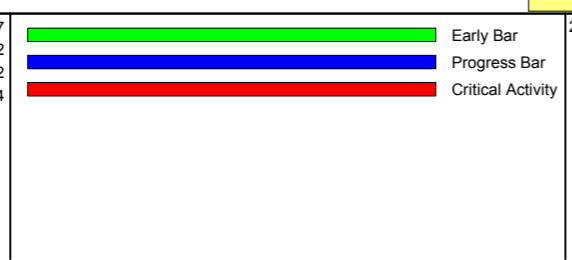
**Design & Construction of HK. West Drainage Tunnel**  
Contract No. DC/2007/10

WORKS PROGRAMME APPROVAL HISTORY			
Date	Revision	Checked	Approved
13JAN09	Approved Works Programme # 1	SOR	804B
27MAR09	Approved Works Programme # 2	SOR	9032
10DEC10	Approved Works Programme # 3	SOR	9116
01MAR10	Approved Works Programme # 4	SOR	003A
25FEB11	Approved Works Programme # 5	SOR	301F
29JUN11	Approved Works Programme # 6	SOR	WP6C





Start Date 30NOV07  
 Finish Date 27NOV12  
 Data Date 21FEB12  
 Run Date 02APR12 09:04



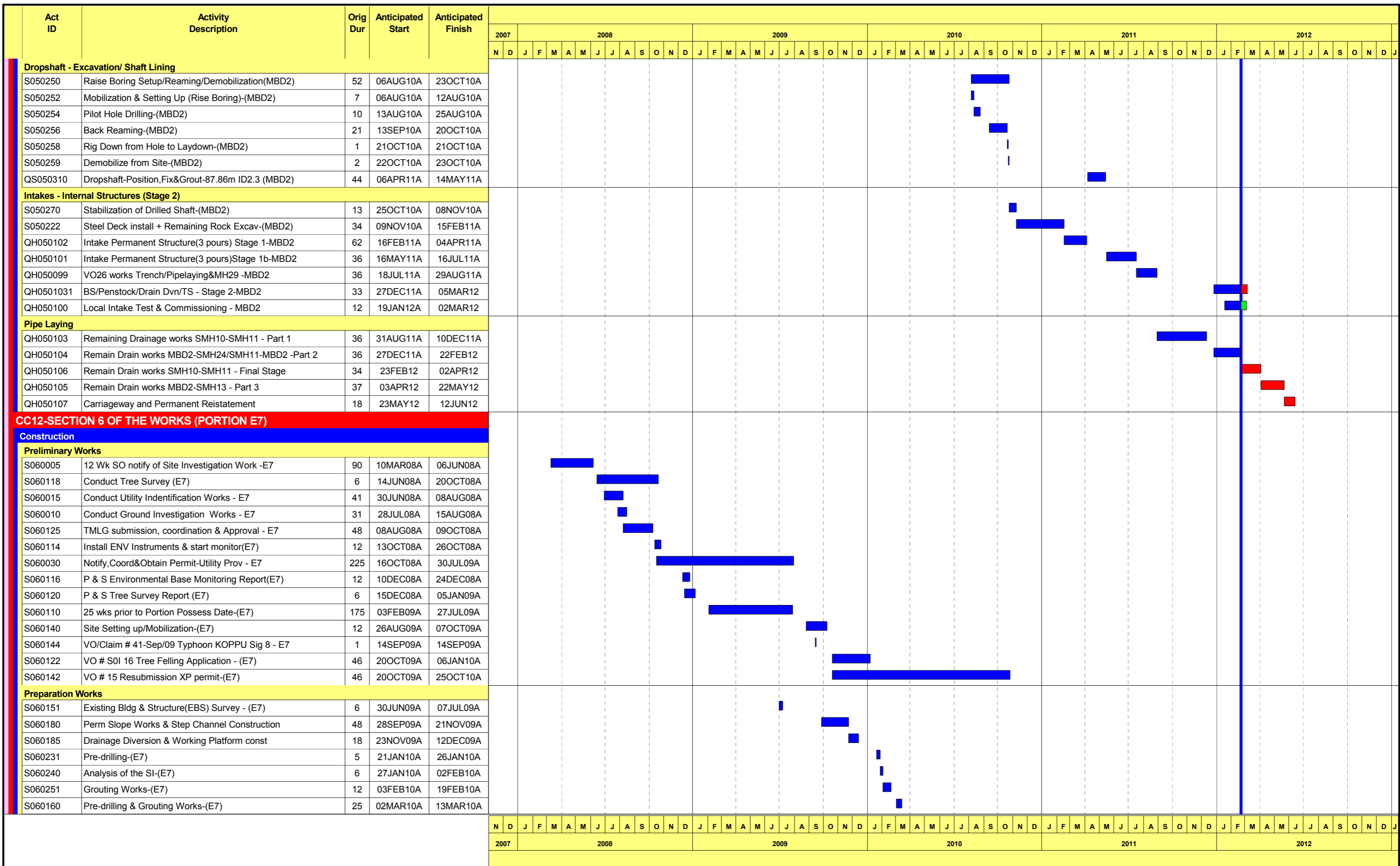
Sheet 21 of 48

Design & Construction of HK. West Drainage Tunnel  
 Contract No. DC/2007/10

WORKS PROGRAMME APPROVAL HISTORY			
Date	Revision	Checked	Approved
13JAN09	Approved Works Programme # 1	SOR	804B
27MAR09	Approved Works Programme # 2	SOR	9032
10DEC10	Approved Works Programme # 3	SOR	9116
01MAR10	Approved Works Programme # 4	SOR	003A
25FEB11	Approved Works Programme # 5	SOR	301F
29JUN11	Approved Works Programme # 6	SOR	WP6C







Start Date 30NOV07  
 Finish Date 27NOV12  
 Data Date 21FEB12  
 Run Date 02APR12 09:04

202A

Sheet 24 of 48

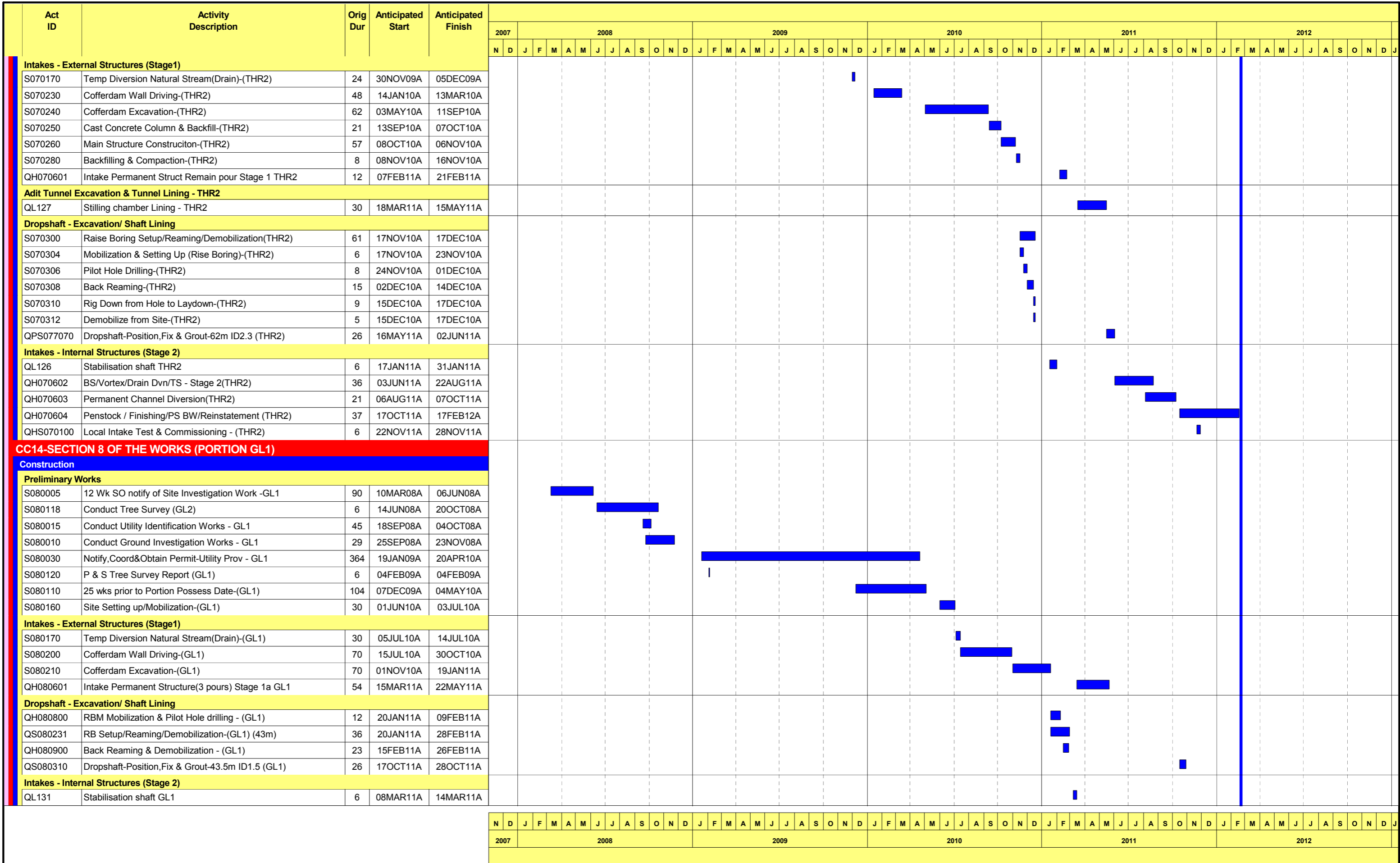
Design & Construction of HK. West Drainage Tunnel  
 Contract No. DC/2007/10

Legend:  
█ Early Bar  
█ Progress Bar  
█ Critical Activity

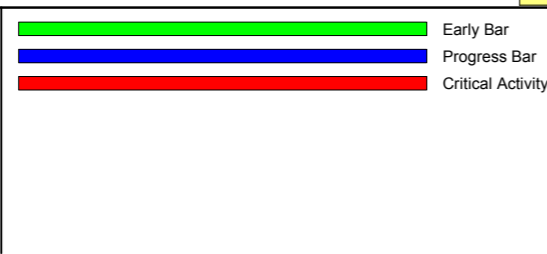
WORKS PROGRAMME APPROVAL HISTORY			
Date	Revision	Checked	Approved
13JAN09	Approved Works Programme # 1	SOR	804B
27MAR09	Approved Works Programme # 2	SOR	9032
10DEC10	Approved Works Programme # 3	SOR	9116
01MAR10	Approved Works Programme # 4	SOR	003A
25FEB11	Approved Works Programme # 5	SOR	301F
29JUN11	Approved Works Programme # 6	SOR	WP6C







Start Date 30NOV07  
 Finish Date 27NOV12  
 Data Date 21FEB12  
 Run Date 02APR12 09:04



202A Sheet 26 of 48  
**Design & Construction of HK. West Drainage Tunnel**  
 Contract No. DC/2007/10

WORKS PROGRAMME APPROVAL HISTORY			
Date	Revision	Checked	Approved
13JAN09	Approved Works Programme # 1	SOR	804B
27MAR09	Approved Works Programme # 2	SOR	9032
10DEC10	Approved Works Programme # 3	SOR	9116
01MAR10	Approved Works Programme # 4	SOR	003A
25FEB11	Approved Works Programme # 5	SOR	301F
29JUN11	Approved Works Programme # 6	SOR	WP6C

Act ID	Activity Description	Orig Dur	Anticipated Start	Anticipated Finish	2007 2008 2009 2010 2011 2012																																																																							
					2007												2008												2009												2010												2011												2012											
					N	D	J	F	M	A	M	J	J	A	S	O	N	D	J	F	M	A	M	J	J	A	S	O	N	D	J	F	M	A	M	J	J	A	S	O	N	D	J	F	M	A	M	J	J	A	S	O	N	D	J	F	M	A	M	J	J	A	S	O	N	D	J	F	M	A	M	J	J	A	S	O
<b>Intakes - Internal Structures (Stage 2)</b>																																																																												
QHS080375	Intake Permanent Remaining(4 pours)Stage 1b(GL1)	38	15NOV11A	15DEC11A																																																																								
QHS080376	BS/Vortex/Penstock/Drain Dvn/TS - Stage 2(GL1)	32	28NOV11A	20JAN12A																																																																								
QHS080377	Finishing works / PS BW / Reinstatement (GL1)	18	11JAN12A	17FEB12A																																																																								
QHS080100	Local Intake Test & Commissioning - (GL1)	12	21JAN12A	07FEB12A																																																																								
<b>CC15-SECTION9 OF THE WORKS(PORTION HR1)</b>																																																																												
<b>Construction</b>																																																																												
<b>Preliminary Works</b>																																																																												
S090118	Conduct Tree Survey (HR1)	6	14JUN08A	20OCT08A																																																																								
S090030	Notify,Coord&Obtain Permit-Utility Prov - HR1	315	24OCT08A	20NOV09A																																																																								
S090122	GI & Inspection Pits - Advance Works (HR1)	1	05MAY09A	07JUL09A																																																																								
S090120	P & S Tree Survey Report (HR1)	6	22JUN09A	29JUN09A																																																																								
S090110	25 wks prior to Portion Possess Date-(HR1)	169	07DEC09A	06APR10A																																																																								
S090160	Site Setting up/Mobilization-(HR1)	24	27APR10A	24JUN10A																																																																								
S090200	Install Working Platform	33	25JUN10A	31AUG10A																																																																								
<b>Intakes - External Structures (Stage1)</b>																																																																												
S090240	Cofferdam Wall Driving-(HR1)	46	22JUL10A	13NOV10A																																																																								
S090250	Cofferdam Excavation + RBM Platform-(HR1)	85	15NOV10A	09MAY11A																																																																								
S090210	Temp Diversion Natural Stream(Drain)-(HR1)	30	18NOV10A	31JAN11A																																																																								
S090260	Main Structure Construciton-(HR1)	60	14JUN11A	28DEC11A																																																																								
S090280	Backfilling & Compaction-(HR1)	8	31DEC11A	10JAN12A																																																																								
<b>Dropshaft - Excavation/ Shaft Lining</b>																																																																												
QS090290	RB Setup/Reaming/Demobilization(HR1) (45m)	30	11MAY11A	10JUN11A																																																																								
QS090293	RBM Mobilization & Pilot Hole drilling - (HR1)	13	11MAY11A	26MAY11A																																																																								
QS090295	Back Reaming & Demobilization - (HR1)	17	27MAY11A	10JUN11A																																																																								
QS090350	Dropshaft-Position,Fix&Grout - 44.8m ID2.3 (HR1)	31	21FEB12	27MAR12																																																																								
<b>Intakes - Internal Structures (Stage 2)</b>																																																																												
QPS090271	BS/Vortex/Penstock/Drain Dvn/TS - Stage 2(HR1)	36	28MAR12	15MAY12																																																																								
QHS090100	Local Intake Test & Commissioning - (HR1)	12	02MAY12	15MAY12																																																																								
QPS09272	Finishing works / PS BW / Reinstatement (HR1)	18	16MAY12	05JUN12																																																																								
<b>CC16-SECTION 10 OF THE WORKS (PORTION DG1)</b>																																																																												
<b>Construction</b>																																																																												
<b>Preliminary Works</b>																																																																												
S100005	12 Wk SO notify of Site Investigation Work -DG1	90	10MAR08A	06JUN08A																																																																								
S100118	Conduct Tree Survey (DG1)	6	14JUN08A	20OCT08A																																																																								
S100015	Conduct Utility Identification Works - DG1	41	30JUN08A	23JUL08A																																																																								
S100010	Conduct Ground Investigation Works - DG1	54	17JUL08A	15AUG08A																																																																								
S100114	Install ENV Instruments & start monitor(DG1)	12	24NOV08A	22DEC08A																																																																								
S100120	P & S Tree Survey Report (DG1)	6	15DEC08A	06JAN09A																																																																								
S100116	P & S Environmental Base Monitoring Report(DG1)	12	19JAN09A	09FEB09A																																																																								
S100110	25 wks prior to Portion Possess Date-(DG1)	175	04SEP09A	25FEB10A																																																																								
S100140	Site Setting up/Mobilization-(DG1)	40	27APR10A	22JUN10A																																																																								
<b>Intakes - External Structures (Stage1)</b>																																																																												
S100180	Cofferdam Wall Driving / Grouting/Platform(DG1)	45	05JUL10A	13SEP10A																																																																								
S100220	Cofferdam Excavation, ELS+OGC+2Pours -(DG1)	98	14SEP10A	31JAN11A																																																																								
S100170	Temp Diversion Natural Stream(Drain)-(DG1)	24	21SEP10A	20OCT10A																																																																								

2007 2008 2009 2010 2011 2012																																																													
N	D	J	F	M	A	M	J	J	A	S	O	N	D	J	F	M	A	M	J	J	A	S	O	N	D	J	F	M	A	M	J	J	A	S	O	N	D	J	F	M	A	M	J	J	A	S	O	N	D	J	F	M	A	M	J	J	A	S	O	N	D

Start Date 30NOV07  
Finish Date 27NOV12  
Data Date 21FEB12  
Run Date 02APR12 09:04

Early Bar  
Progress Bar  
Critical Activity

202A  
Sheet 27 of 48  
Design & Construction of HK. West Drainage Tunnel  
Contract No. DC/2007/10

WORKS PROGRAMME APPROVAL HISTORY			
Date	Revision	Checked	Approved
13JAN09	Approved Works Programme # 1	SOR	804B
27MAR09	Approved Works Programme # 2	SOR	9032
10DEC10	Approved Works Programme # 3	SOR	9116
01MAR10	Approved Works Programme # 4	SOR	003A
25FEB11	Approved Works Programme # 5	SOR	301F
29JUN11	Approved Works Programme # 6	SOR	WP6C










Act ID	Activity Description	Orig Dur	Anticipated Start	Anticipated Finish	2007												2008												2009												2010												2011												2012											
					2007												2008												2009												2010												2011												2012											
					N	D	J	F	M	A	M	J	J	A	S	O	N	D	J	F	M	A	M	J	J	A	S	O	N	D	J	F	M	A	M	J	J	A	S	O	N	D	J	F	M	A	M	J	J	A	S	O	N	D	J	F	M	A	M	J	J	A	S	O	N	D	J	F	M	A	M	J	J	A	S	O
<b>Adit Tunnel Excavation &amp; Tunnel Lining - sec1</b>																																																																												
QH333	Construct Stilling Chamber Walls/Roof (W0)	18	17AUG11A	22OCT11A																																																																								
<b>Intakes - Internal Structures (Stage 2)</b>																																																																												
QH3332	Access Shaft & Dropshaft Lining - W0	52	24OCT11A	03DEC11A																																																																								
QH3333	Intake Struct stage 1 & Access Shaft(6 pours)-W0	60	05DEC11A	11FEB12A																																																																								
QH3334	BS/Vortex/Penstock/Drain Dvn/TS Stage 2- (W0)	33	13FEB12A	26MAR12																																																																								
QH3336	Intake Backfill and compression - W0	3	21FEB12	23FEB12																																																																								
QH3335	Finishing works / PS BW / Reinstatement (W0)	67	07MAR12	30MAY12																																																																								
QH010100	Local Intake Test & Commissioning - (W0)	12	07MAR12	20MAR12																																																																								
<b>CC17-SECTION 11 OF THE WORKS (PORTION BR4)</b>																																																																												
<b>Construction</b>																																																																												
<b>Preliminary Works</b>																																																																												
S110118	Conduct Tree Survey (BR4)	6	14JUN08A	20OCT08A																																																																								
S110120	P & S Tree Survey Report (BR4)	6	29JAN09A	04FEB09A																																																																								
S110122	GI & Inspection Pits - Advance Works (BR4)	1	25JUN09A	18JUL09A																																																																								
S110020	Notify,Coord&Obtain Permit-Utility Prov - BR4	149	20OCT09A	19APR10A																																																																								
S110110	25 wks prior to Portion Possess Date-(BR4)	168	21JAN10A	28JUN10A																																																																								
S110180	Water barrier/remove furniture/trial pits -(BR4)	24	30JUN10A	10JUL10A																																																																								
S110181	Install chain link fence - (BR4)	11	12JUL10A	24JUL10A																																																																								
S110183	Standby waiting for SOR Instructions - (BR4)	106	12JUL10A	25OCT10A																																																																								
S110192	VO 69-Concrete infill unchartered structure-BR4	67	26OCT10A	11JAN11A																																																																								
<b>Intakes - External Structures (Stage1)</b>																																																																												
S110190	Loading/Unloading Platforms	42	26OCT10A	20DEC10A																																																																								
S110194	Diversion Channel, skin wall + OHC Installation	35	12JAN11A	19MAR11A																																																																								
S110198	Open Excavation to +102.5mPD + Dropshaft Grout	60	21MAR11A	31MAY11A																																																																								
S110200	Construct Intake Stage 1 (4 pours)+ RBM Platform	61	01JUN11A	08AUG11A																																																																								
<b>Dropshaft - Excavation/ Shaft Lining</b>																																																																												
QS110610	RB Setup/Reaming/Demobilization(BR4) (58m)	55	09AUG11A	07OCT11A																																																																								
QS11613	RBM Mobilization & Pilot Hole drilling - (BR4)	27	09AUG11A	24AUG11A																																																																								
QS11615	Back Reaming & Demobilization - (BR4)	28	09SEP11A	07OCT11A																																																																								
QHS110435	Install Dropshaft lining Temp Support (BR4)	6	10OCT11A	15OCT11A																																																																								
QS110741	Dropshaft-Position,Fix & Grout-58.5m ID1.5(BR4)	26	27DEC11A	20JAN12A																																																																								
<b>Intakes - Internal Structures (Stage 2)</b>																																																																												
QHS110436	BS/Vortex/Penstock/Drain Dvn/TS - Stage 2(BR4)	33	21JAN12A	03MAR12																																																																								
QHS170100	Local Intake Test & Commissioning - (BR4)	12	21FEB12	05MAR12																																																																								
QHS1104361	Dismantle OHC (BR4)	12	05MAR12	17MAR12																																																																								
QHS1104363	Dismantle Loading Platform + Reinstatement (BR4)	51	19MAR12	23MAY12																																																																								
<b>CC18-SECTION 12 OF THE WORKS (PORTION W1)</b>																																																																												
<b>Construction</b>																																																																												
<b>Preliminary Works</b>																																																																												
S120118	Conduct Tree Survey (W1)	6	14JUN08A	20OCT08A																																																																								
S120122	GI - Advance Works (W1)	1	27FEB09A	20MAY09A																																																																								
S120120	P & S Tree Survey Report (W1)	6	22JUN09A	29JUN09A																																																																								
S120020	Notify,Coord&Obtain Permit-Utility Prov - W1	149	20OCT09A	22APR10A																																																																								
S120110	25 wks prior to Portion Possess Date-(W1)	175	22DEC09A	22APR10A																																																																								
S120140	Site Setting up/Mobilization-(W1)	24	26APR10A	26JUN10A																																																																								
S120160	Load/Unload Platf/Overhead Gantry & Access	74	28JUN10A	20OCT10A																																																																								

2007												2008												2009												2010												2011												2012											
N	D	J	F	M	A	M	J	J	A	S	O	N	D	J	F	M	A	M	J	J	A	S	O	N	D	J	F	M	A	M	J	J	A	S	O	N	D	J	F	M	A	M	J	J	A	S	O	N	D	J	F	M	A	M	J	J	A	S	O	N	D										

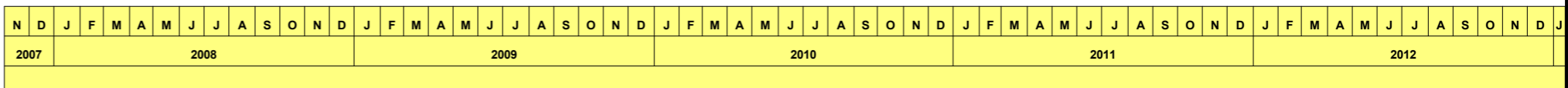
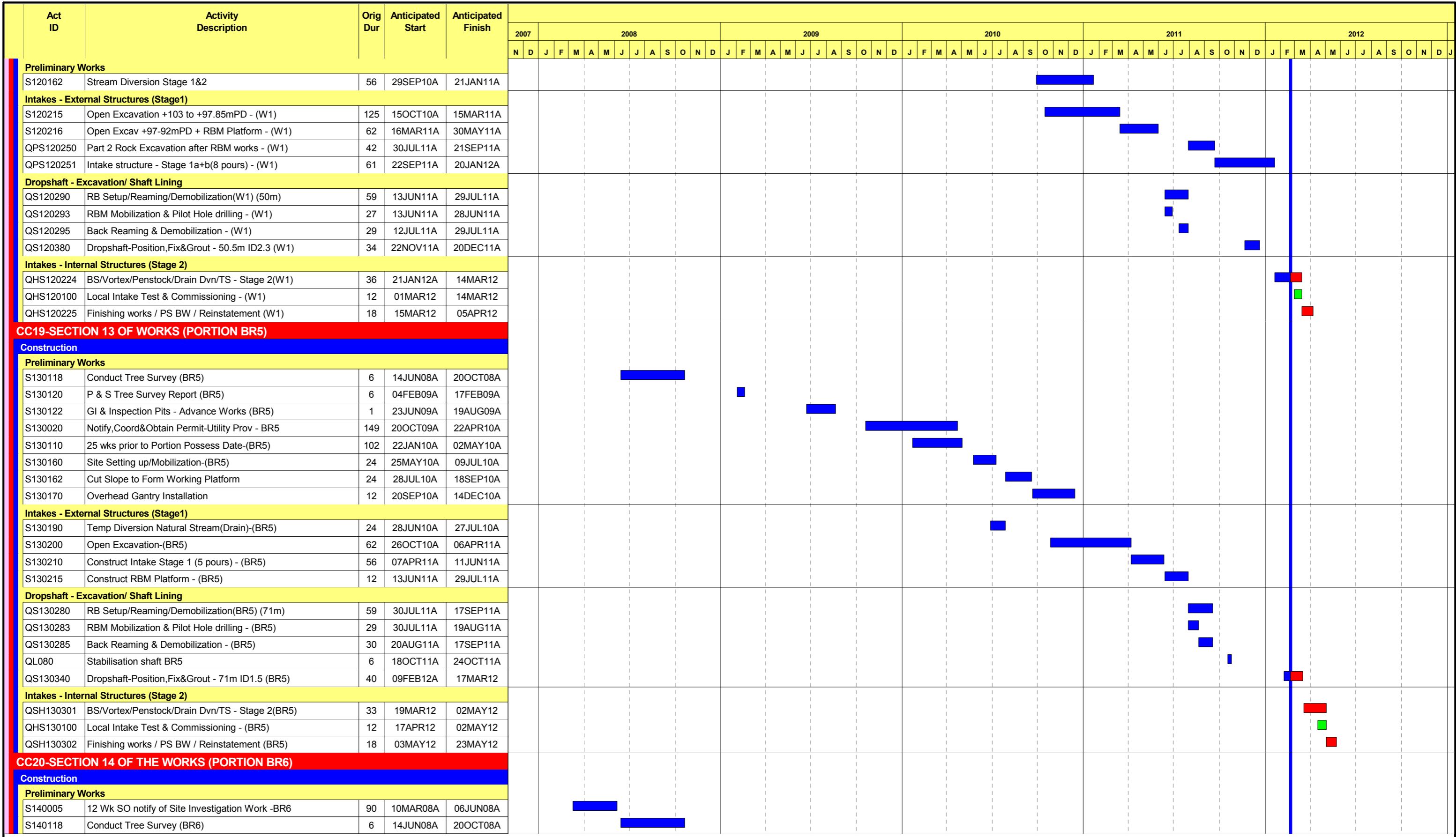
Start Date	30NOV07		Early Bar
Finish Date	27NOV12		Progress Bar
Data Date	21FEB12		Critical Activity
Run Date	02APR12 09:04		

202A

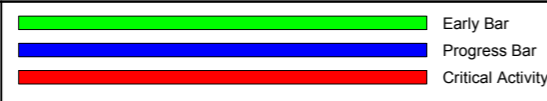
Sheet 30 of 48

Design & Construction of HK. West Drainage Tunnel  
Contract No. DC/2007/10

WORKS PROGRAMME APPROVAL HISTORY			
Date	Revision	Checked	Approved
13JAN09	Approved Works Programme # 1	SOR	804B
27MAR09	Approved Works Programme # 2	SOR	9032
10DEC10	Approved Works Programme # 3	SOR	9116
01MAR10	Approved Works Programme # 4	SOR	003A
25FEB11	Approved Works Programme # 5	SOR	301F
29JUN11	Approved Works Programme # 6	SOR	WP6C

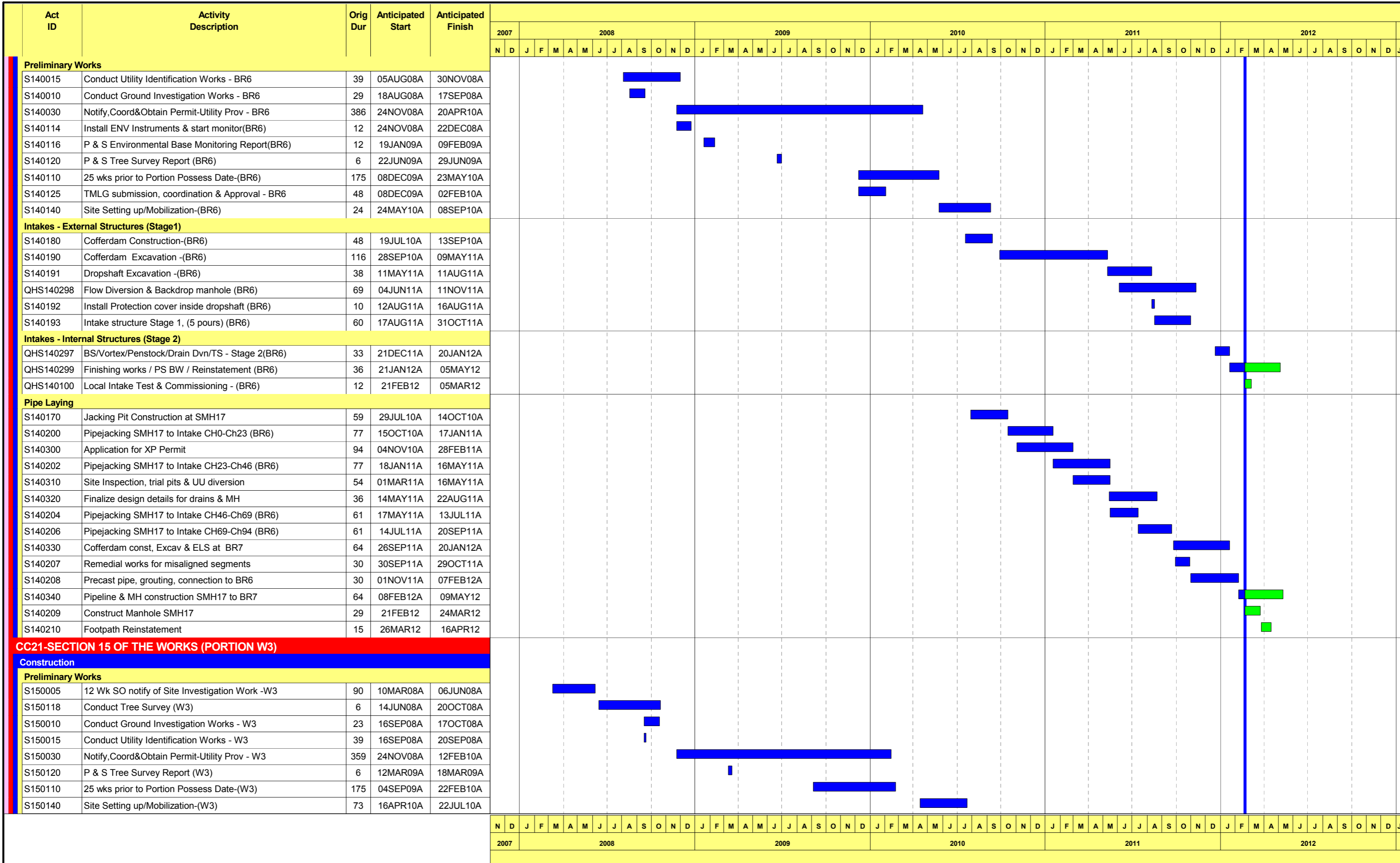


Start Date 30NOV07  
 Finish Date 27NOV12  
 Data Date 21FEB12  
 Run Date 02APR12 09:04



202A Sheet 31 of 48  
 Design & Construction of HK. West Drainage Tunnel  
 Contract No. DC/2007/10

WORKS PROGRAMME APPROVAL HISTORY			
Date	Revision	Checked	Approved
13JAN09	Approved Works Programme # 1	SOR	804B
27MAR09	Approved Works Programme # 2	SOR	9032
10DEC10	Approved Works Programme # 3	SOR	9116
01MAR10	Approved Works Programme # 4	SOR	003A
25FEB11	Approved Works Programme # 5	SOR	301F
29JUN11	Approved Works Programme # 6	SOR	WP6C



Start Date 30NOV07  
 Finish Date 27NOV12  
 Data Date 21FEB12  
 Run Date 02APR12 09:04

202A

Sheet 32 of 48

Design & Construction of HK. West Drainage Tunnel  
 Contract No. DC/2007/10

Legend:  
█ Early Bar  
█ Progress Bar  
█ Critical Activity




WORKS PROGRAMME APPROVAL HISTORY			
Date	Revision	Checked	Approved
13JAN09	Approved Works Programme # 1	SOR	804B
27MAR09	Approved Works Programme # 2	SOR	9032
10DEC10	Approved Works Programme # 3	SOR	9116
01MAR10	Approved Works Programme # 4	SOR	003A
25FEB11	Approved Works Programme # 5	SOR	301F
29JUN11	Approved Works Programme # 6	SOR	WP6C





Act ID	Activity Description	Orig Dur	Anticipated Start	Anticipated Finish	2007 2008 2009 2010 2011 2012																																																																							
					2007												2008												2009												2010												2011												2012											
					N	D	J	F	M	A	M	J	J	A	S	O	N	D	J	F	M	A	M	J	J	A	S	O	N	D	J	F	M	A	M	J	J	A	S	O	N	D	J	F	M	A	M	J	J	A	S	O	N	D	J	F	M	A	M	J	J	A	S	O	N	D										
<b>CC23-SECTION 17 OF THE WORKS (PORTION MA14)</b>																																																																												
<b>Construction</b>																																																																												
<b>Preliminary Works</b>																																																																												
S170118	Conduct Tree Survey (MA14)	6	14JUN08A	20OCT08A																																																																								
S170114	Install ENV Instruments & start monitor(MA14)	12	24NOV08A	22DEC08A																																																																								
S170116	P & S Environmental Base Monitoring Report(MA14)	12	19JAN09A	09FEB09A																																																																								
S170119	P & S Tree Survey Report (MA14)	6	20FEB09A	26FEB09A																																																																								
S170117	GI & Inspection Pits - Advance Works (MA14)	1	05MAR09A	04JUL09A																																																																								
S170020	Notify,Coord&Obtain Permit-Utility Prov - MA14	149	25JUN09A	18DEC09A																																																																								
S170110	25 wks prior to Portion Possess Date-(MA14)	175	04SEP09A	22FEB10A																																																																								
S170140	Hoarding/Fencing-(MA14)	12	12MAY10A	04JUN10A																																																																								
S170160	Haul Road & Platform-(MA14)	18	25MAY10A	17JUN10A																																																																								
<b>Preparation Works</b>																																																																												
S170151	Existing Bldg & Structure(EBS) Survey - (MA14)	6	25MAY10A	31MAY10A																																																																								
S170190	Soil Nails-(MA14)	25	22JUN10A	31JUL10A																																																																								
<b>Intakes - External Structures (Stage1)</b>																																																																												
S170260	Mobilization&Setup(Cofferdam Constn)-(MA14)	30	25AUG10A	25OCT10A																																																																								
S170292	Steel Deck Installation-(MA14)	24	26OCT10A	22NOV10A																																																																								
S170293	Cofferdam Wall Piling/Grout/Drain Divn-(MA14)	72	23NOV10A	07MAR11A																																																																								
S170294	Cofferdam Excavation + ELS Installation-(MA14)	80	08MAR11A	04JUN11A																																																																								
S170296	Intake Stage 1/RBM platform & OHC Install-(MA14)	59	31MAY11A	30JUL11A																																																																								
<b>Dropshaft - Excavation/ Shaft Lining</b>																																																																												
QS170560	RB Setup/Reaming/Demobilization(MA14) (154m)	70	25AUG11A	26OCT11A																																																																								
QS170595	RBM Mobilization & Pilot Hole drilling - (MA14)	23	25AUG11A	17SEP11A																																																																								
QS170597	Back Reaming & Demobilization - (MA14)	47	19SEP11A	26OCT11A																																																																								
QPS170360	Dropshaft-Position,Fix &Grout-153.6m ID1.5(MA14)	35	03FEB12A	29FEB12																																																																								
<b>Intakes - Internal Structures (Stage 2)</b>																																																																												
QL067	Stabilisation shaft MA14	5	01NOV11A	07NOV11A																																																																								
QL0671	Install OHC- MA14	17	08NOV11A	23DEC11A																																																																								
QHS170474	BS/Vortex/Penstock/Drain Dvn/TS - Stage 2(M14)	36	01MAR12	16APR12																																																																								
QHS170101	Local Intake Test & Commissioning - (M14)	12	29MAR12	16APR12																																																																								
QHS170476	Finishing works / PS BW / Reinstatement (MA14)	18	17APR12	09MAY12																																																																								
QHS170477	Dismantling of Overhead Gantry Crane (MA14)	7	02MAY12	09MAY12																																																																								
QHS170478	Dismantling of Steel Deck (MA14)	10	10MAY12	21MAY12																																																																								

Act ID	Activity Description	Orig Dur	Anticipated Start	Anticipated Finish	2007 2008 2009 2010 2011 2012																																																																							
					2007												2008												2009												2010												2011												2012											
					N	D	J	F	M	A	M	J	J	A	S	O	N	D	J	F	M	A	M	J	J	A	S	O	N	D	J	F	M	A	M	J	J	A	S	O	N	D	J	F	M	A	M	J	J	A	S	O	N	D																						
<b>CC24-SECTION 18 OF THE WORKS (PORTION MA15)</b>																																																																												
<b>Construction</b>																																																																												
<b>Preliminary Works</b>																																																																												
S180118	Conduct Tree Survey (MA15)	6	14JUN08A	20OCT08A																																																																								
S180114	Install ENV Instruments & start monitor(MA15)	12	24NOV08A	22DEC08A																																																																								
S180117	GI & Inspection Pits - Advance Works (MA15)	1	27MAR09A	15MAY09A																																																																								
S180120	P & S Tree Survey Report (MA15)	6	22JUN09A	29JUN09A																																																																								
S180020	Notify,Coord&Obtain Permit-Utility Prov - MA15	149	21JUL09A	18DEC09A																																																																								
S180110	25 wks prior to Portion Possess Date-(MA15)	175	04SEP09A	22FEB10A																																																																								
S180116	P & S Environmental Base Monitoring Report(MA15)	12	21JAN10A	03FEB10A																																																																								
S180170	Site Clearance (MA15)	12	23MAR10A	08APR10A																																																																								
S180180	Power & Water Points-(MA15)	24	09APR10A	22MAY10A																																																																								
S180150	Hoarding/Fencing-(MA15)	12	13APR10A	08MAY10A																																																																								

Start Date	30NOV07		Early Bar
Finish Date	27NOV12		Progress Bar
Data Date	21FEB12		Critical Activity
Run Date	02APR12 09:04		

202A	Sheet 34 of 48
------	----------------

**Design & Construction of HK. West Drainage Tunnel**  
Contract No. DC/2007/10

WORKS PROGRAMME APPROVAL HISTORY			
Date	Revision	Checked	Approved
13JAN09	Approved Works Programme # 1	SOR	804B
27MAR09	Approved Works Programme # 2	SOR	9032
10DEC10	Approved Works Programme # 3	SOR	9116
01MAR10	Approved Works Programme # 4	SOR	003A
25FEB11	Approved Works Programme # 5	SOR	301F
29JUN11	Approved Works Programme # 6	SOR	WP6C










Act ID	Activity Description	Orig Dur	Anticipated Start	Anticipated Finish	2007												2008												2009												2010												2011												2012											
					2007												2008												2009												2010												2011												2012											
					N	D	J	F	M	A	M	J	J	A	S	O	N	D	J	F	M	A	M	J	J	A	S	O	N	D	J	F	M	A	M	J	J	A	S	O	N	D	J	F	M	A	M	J	J	A	S	O	N	D	J	F	M	A	M	J	J	A	S	O	N	D	J	F	M	A	M	J	J	A	S	O
<b>Dropshaft - Excavation/ Shaft Lining</b>																																																																												
QS200575	RBM Mobilization & Pilot Hole drilling - (M3)	22	12APR11A	09MAY11A																																																																								
QS200577	Back Reaming & Demobilization - (M3)	42	21MAY11A	15JUL11A																																																																								
QPS200370	Dropshaft-Position,Fix&Grout- 133.4m ID1.5 (M3)	37	22DEC11A	20JAN12A																																																																								
<b>Intakes - Internal Structures (Stage 2)</b>																																																																												
QHS200409	Part 2 Rock Excav+Rock Stab&Drain Divn works -M3	71	01AUG11A	06OCT11A																																																																								
QHS200412	Overhead Gantry Erection -M3	14	03OCT11A	19DEC11A																																																																								
QHS200411	Intake Permanent Structure(4 pours) Stage 1 -M3	36	21JAN12A	02MAR12																																																																								
QHS200413	BS/Vortex/Penstock/Drain Dvn/TS - Stage 2(M3)	33	03MAR12	14APR12																																																																								
QHS200100	Local Intake Test & Commissioning - (M3)	12	28MAR12	14APR12																																																																								
QHS200414	Finishing works / PS BW / Reinstatement (M3)	15	03APR12	24APR12																																																																								
QHS200415	Dismantling Overhead Gantry (M3)	7	17APR12	24APR12																																																																								
<b>CC27-SECTION 21 OF THE WORKS (PORTION TP789)</b>																																																																												
<b>Construction</b>																																																																												
<b>Preliminary Works</b>																																																																												
S210005	12 Wk SO notify of Site Investigation Work-TP789	90	10MAR08A	06JUN08A																																																																								
S210118	Conduct Tree Survey (TP789)	6	14JUN08A	20OCT08A																																																																								
S210015	Conduct Utility Identification Works - TP789	40	05AUG08A	18AUG08A																																																																								
S210010	Conduct Ground Investigation Works -TP789	63	18AUG08A	13SEP08A																																																																								
S210120	P & S Tree Survey Report (TP789)	6	15DEC08A	07JAN09A																																																																								
S210110	25 wks prior to Portion Possess Date-(TP789)	175	20MAY09A	10NOV09A																																																																								
S210150	Hoarding/Fencing-(TP789)	9	24NOV09A	14DEC09A																																																																								
S210170	Power & Water Points-(TP789)	21	24NOV09A	07JAN10A																																																																								
S210230	Site Office-(TP789)	3	01DEC09A	05DEC09A																																																																								
S210160	Cut/Fill/Place Concrete Block&Platform-(TP789)	15	07DEC09A	07JAN10A																																																																								
<b>Preparation Works</b>																																																																												
S210220	Slope Protection Works-(TP789)	36	07DEC09A	20JAN10A																																																																								
S210225	Temp Drainage Diversion Works-(TP789)	36	14DEC09A	06FEB10A																																																																								
S210227	Stage 2 site Installation works-(TP789)	6	08FEB10A	17FEB10A																																																																								
S210229	Permanent Slope cutting works-(TP789)	17	18FEB10A	17APR10A																																																																								
<b>Intakes - External Structures (Stage1)</b>																																																																												
S210270	Open Cut Excavation	58	19APR10A	09OCT10A																																																																								
S210290	Excavation (Soft) Soil-(TP789)	7	19APR10A	23APR10A																																																																								
S210275	VO # 09 Addl Excav for box culvert Works - TP789	7	24APR10A	04MAY10A																																																																								
S210310	VO#29 - Forming Steeped Channel & Catchpit	12	05MAY10A	20MAY10A																																																																								
S210320	VO#29 Demolish Existing Steeped Channel- (TP789)	6	22MAY10A	28MAY10A																																																																								
S210350	Blinding-(TP789)	3	11OCT10A	13OCT10A																																																																								
S210360	Base Slabs-(TP789)	12	14OCT10A	25OCT10A																																																																								
S210370	External Walls-(TP789)	12	26OCT10A	08NOV10A																																																																								
S210420	Top Slab with Opening-(TP789)	12	09NOV10A	22NOV10A																																																																								
S210430	Backing & Compaction-(TP789)	5	23NOV10A	27NOV10A																																																																								
<b>Adit Tunnel Excavation &amp; Tunnel Lining - TP789</b>																																																																												
QL052	Stilling chamber Lining - TP789	36	30APR11A	30JUN11A																																																																								
<b>Dropshaft - Excavation/ Shaft Lining</b>																																																																												
QH210800	RBM Mobilization & Pilot Hole drilling - (TP789)	24	29NOV10A	05JAN11A																																																																								
QS210470	RB Setup/Reaming/Demobilization(TP789) (162m)	74	29NOV10A	21MAR11A																																																																								
QH210900	Back Reaming & Demobilization - (TP789)	25	24JAN11A	19MAR11A																																																																								

2007												2008												2009												2010												2011												2012											
N	D	J	F	M	A	M	J	J	A	S	O	N	D	J	F	M	A	M	J	J	A	S	O	N	D	J	F	M	A	M	J	J	A	S	O	N	D	J	F	M	A	M	J	J	A	S	O	N	D	J	F	M	A	M	J	J	A	S	O	N	D										

Start Date	30NOV07
Finish Date	27NOV12
Data Date	21FEB12
Run Date	02APR12 09:04

	Early Bar
	Progress Bar
	Critical Activity

202A

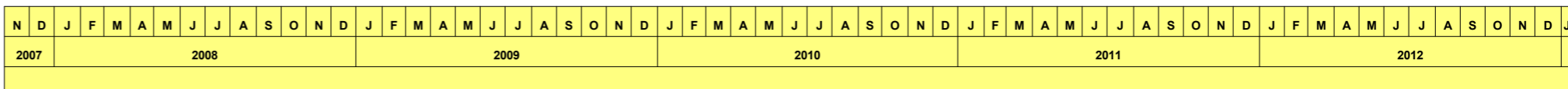
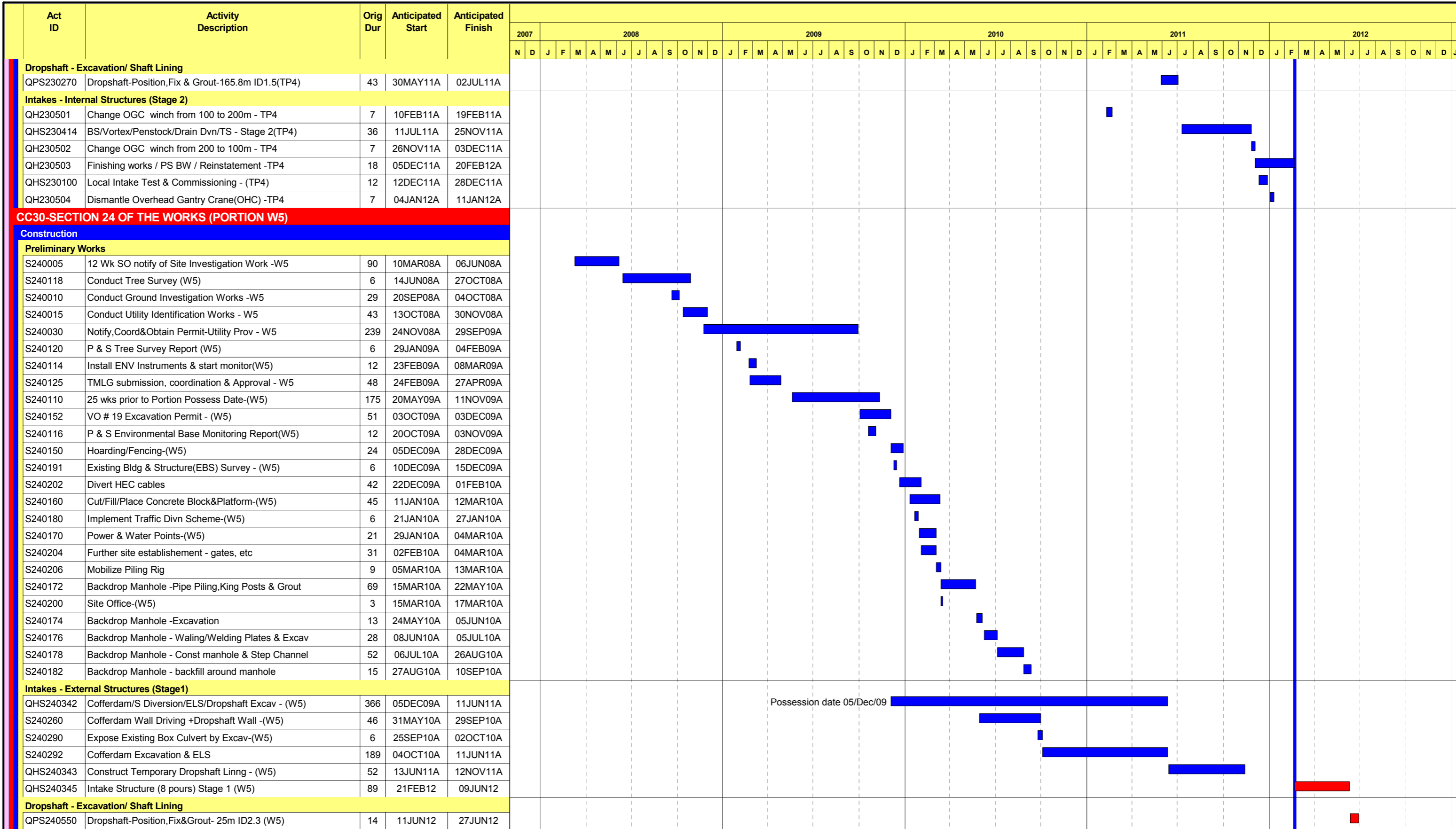
Sheet 37 of 48

**Design & Construction of HK. West Drainage Tunnel**  
Contract No. DC/2007/10

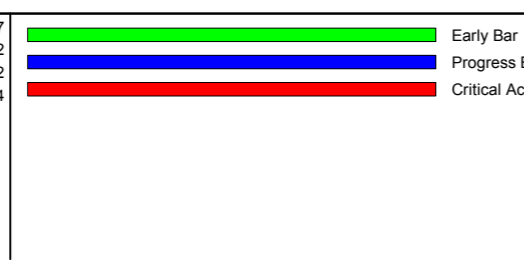
WORKS PROGRAMME APPROVAL HISTORY			
Date	Revision	Checked	Approved
13JAN09	Approved Works Programme # 1	SOR	804B
27MAR09	Approved Works Programme # 2	SOR	9032
10DEC10	Approved Works Programme # 3	SOR	9116
01MAR10	Approved Works Programme # 4	SOR	003A
25FEB11	Approved Works Programme # 5	SOR	301F
29JUN11	Approved Works Programme # 6	SOR	WP6C







Start Date 30NOV07  
 Finish Date 27NOV12  
 Data Date 21FEB12  
 Run Date 02APR12 09:04

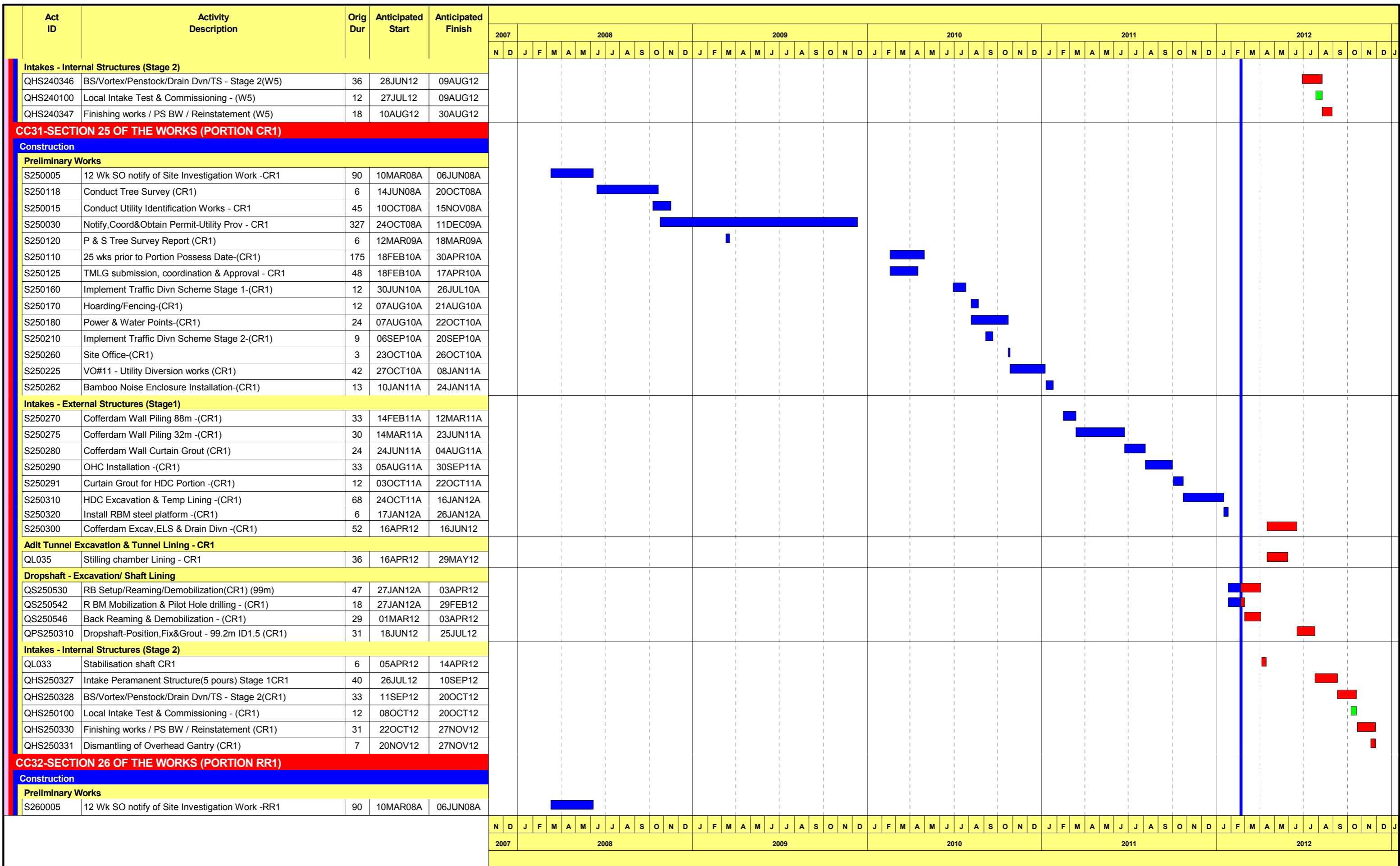


Sheet 40 of 48

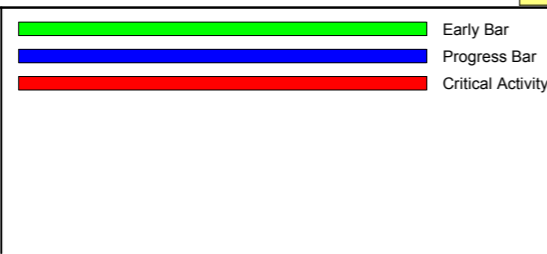
**Design & Construction of HK. West Drainage Tunnel**  
 Contract No. DC/2007/10

WORKS PROGRAMME APPROVAL HISTORY			
Date	Revision	Checked	Approved
13JAN09	Approved Works Programme # 1	SOR	804B
27MAR09	Approved Works Programme # 2	SOR	9032
10DEC10	Approved Works Programme # 3	SOR	9116
01MAR10	Approved Works Programme # 4	SOR	003A
25FEB11	Approved Works Programme # 5	SOR	301F
29JUN11	Approved Works Programme # 6	SOR	WP6C





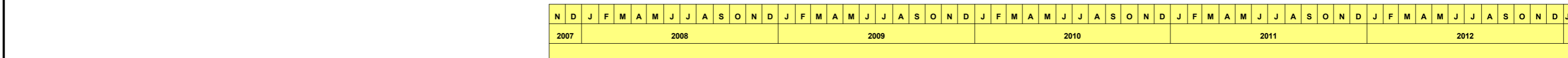
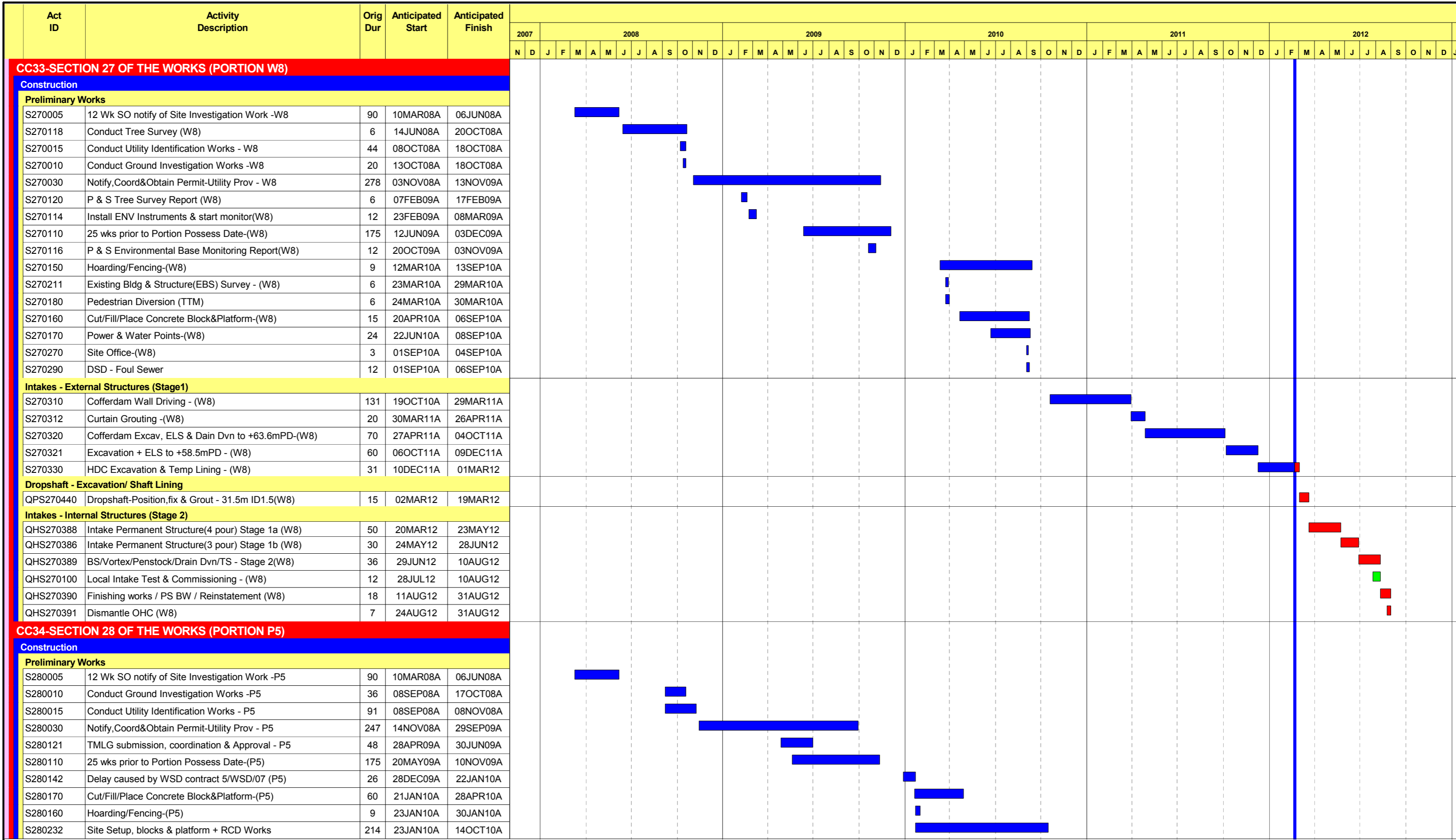
Start Date 30NOV07  
 Finish Date 27NOV12  
 Data Date 21FEB12  
 Run Date 02APR12 09:04



202A Sheet 41 of 48  
 Design & Construction of HK. West Drainage Tunnel  
 Contract No. DC/2007/10

WORKS PROGRAMME APPROVAL HISTORY			
Date	Revision	Checked	Approved
13JAN09	Approved Works Programme # 1	SOR	804B
27MAR09	Approved Works Programme # 2	SOR	9032
10DEC10	Approved Works Programme # 3	SOR	9116
01MAR10	Approved Works Programme # 4	SOR	003A
25FEB11	Approved Works Programme # 5	SOR	301F
29JUN11	Approved Works Programme # 6	SOR	WP6C





Start Date 30NOV07  
 Finish Date 27NOV12  
 Data Date 21FEB12  
 Run Date 02APR12 09:04

Early Bar  
 Progress Bar  
 Critical Activity

202A  
 Sheet 43 of 48  
 Design & Construction of HK. West Drainage Tunnel  
 Contract No. DC/2007/10

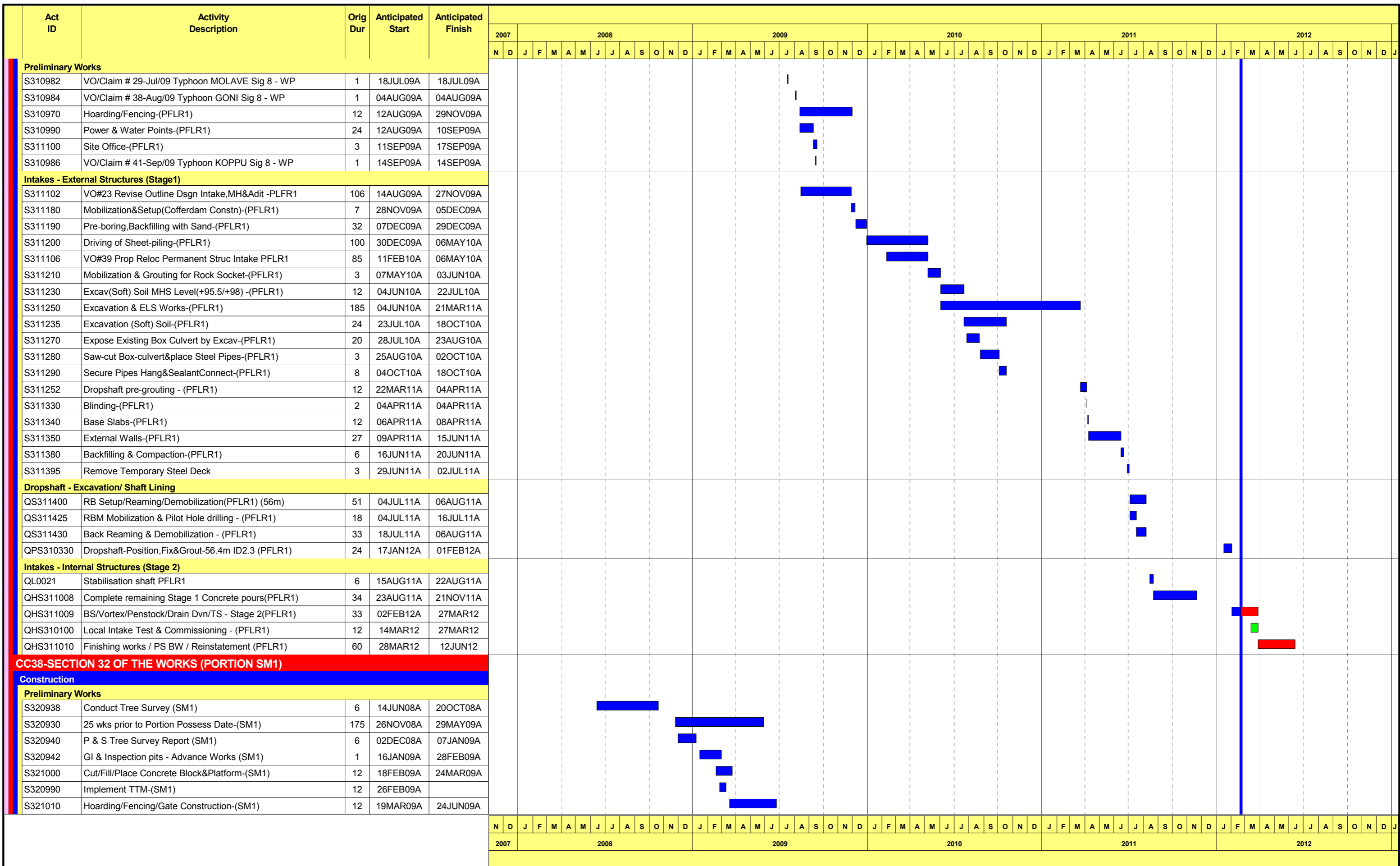
WORKS PROGRAMME APPROVAL HISTORY			
Date	Revision	Checked	Approved
13JAN09	Approved Works Programme # 1	SOR	804B
27MAR09	Approved Works Programme # 2	SOR	9032
10DEC10	Approved Works Programme # 3	SOR	9116
01MAR10	Approved Works Programme # 4	SOR	003A
25FEB11	Approved Works Programme # 5	SOR	301F
29JUN11	Approved Works Programme # 6	SOR	WP6C



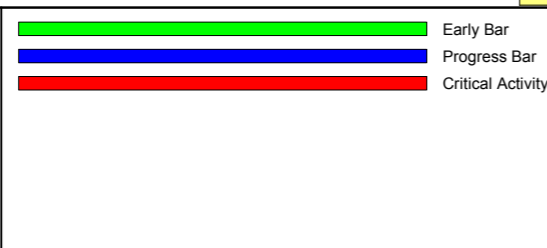








Start Date 30NOV07  
 Finish Date 27NOV12  
 Data Date 21FEB12  
 Run Date 02APR12 09:04



Sheet 47 of 48

**Design & Construction of HK. West Drainage Tunnel**  
 Contract No. DC/2007/10

WORKS PROGRAMME APPROVAL HISTORY			
Date	Revision	Checked	Approved
13JAN09	Approved Works Programme # 1	SOR	804B
27MAR09	Approved Works Programme # 2	SOR	9032
10DEC10	Approved Works Programme # 3	SOR	9116
01MAR10	Approved Works Programme # 4	SOR	003A
25FEB11	Approved Works Programme # 5	SOR	301F
29JUN11	Approved Works Programme # 6	SOR	WP6C

