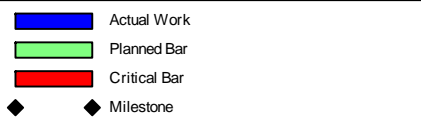


Activity ID	Activity Name	Orig. Durn.	Act. Start / FC Early Start	Duration % Complete	Rem. Durn.	Act. Finish / FC Early Finish	Late Start	Late Finish	Total Float	Free Float	2014																			
											August				September				October				November							
											21	28	04	11	18	25	01	08	15	22	29	06	13	20	27	03	10	17		
HY/2012/07 - TM-CLK Link-SC [DWP rD1] - Status Update 21-08-2014																														
Contract Key Dates																														
Possession Dates / Access Period																														
POS02	Portion A (Commencement of Works+499 days)	0	03-Nov-14*	0%	0		03-Nov-14		0	0																				
IPS Milestones																														
Cost Centre IPS Milestones																														
CC 2 - Design and Design Checking of the Works																														
MS2.006	Accept construction traffic impact assessment by the Supervising Officer	0		0%	0	01-Sep-14*		02-Apr-17	944	381																				
MS2.008	Accept ground investigation reports by the Supervising Officer	0		0%	0	13-Nov-14		02-Apr-17	871	308																				
MS2.014	Approve AIP for Structure F1, exd Structure F1 between Pier F1c and Pier F1d, by the S.O.	0		0%	0	29-Sep-14		02-Apr-17	916	190																				
MS2.015	Submit DDA for Structure F1, excluding Structure F1 between Pier F1c and Pier F1d	0		0%	0	18-Nov-14		02-Apr-17	866	140																				
MS2.018	Approve AIP for Structure F1 between Pier F1c and Pier F1d by the Supervising Officer	0		0%	0	29-Sep-14		02-Apr-17	916	190																				
MS2.019	Submit DDA for Structure F1 between Pier F1c and Pier F1d	0		0%	0	18-Nov-14		02-Apr-17	866	140																				
MS2.030	Approve AIP for Structure F3 betw Pier F3c and Pier F3d by Supervising Officer	0		0%	0	29-Sep-14		02-Apr-17	916	190																				
MS2.031	Submit DDA for Structure F3 between Pier F3c and Pier F3d	0		0%	0	18-Nov-14		02-Apr-17	866	140																				
MS2.038	Approve AIP for Structure F5, exd Structure F5 betw Pier F5c & Pier F5d, by S.O.	0		0%	0	29-Sep-14		02-Apr-17	916	192																				
MS2.039	Submit DDA for Structure F5, excluding Structure F5 between Pier F5c and Pier F5d	0		0%	0	18-Nov-14		02-Apr-17	866	142																				
MS2.042	Approve AIP for Structure F5 betw Pier F5c and Pier F5d by the Supervising Officer	0		0%	0	29-Sep-14		02-Apr-17	916	192																				
MS2.043	Submit DDA for Structure F5 between Pier F5c and Pier F5d	0		0%	0	18-Nov-14		02-Apr-17	866	142																				
MS2.047	Submit DDA for Structure E1	0		100%	0	30-Jul-14 A																								
MS2.052	Approve DDA for Structure E2 by the Supervising Officer	0		0%	0	18-Nov-14		02-Apr-17	866	303																				
MS2.056	Approve DDA for Structure E5, exd Structure E5 betw Pier E5c & Pier E5d, by S.O.	0		0%	0	13-Nov-14		02-Apr-17	871	308																				
MS2.060	Approve DDA for Structure E5 betw Pier E5c & Pier E5d by Supervising Officer	0		0%	0	13-Nov-14		02-Apr-17	871	308																				
MS2.064	Approve DDA for Structure E6 by the Supervising Officer	0		0%	0	13-Nov-14		02-Apr-17	871	308																				
MS2.068	Approve DDA for Structure E7 by the Supervising Officer	0		0%	0	13-Nov-14		02-Apr-17	871	308																				
MS2.072	Approve DDA for Structure E8 by the Supervising Officer	0		0%	0	13-Nov-14		02-Apr-17	871	308																				
MS2.074	Approve AIP for Structure A by the Supervising Officer	0		0%	0	06-Nov-14		02-Apr-17	879	162																				
MS2.080	Approve DDA for Structure B by the Supervising Officer	0		0%	0	23-Oct-14		02-Apr-17	892	329																				
MS2.082	Approve AIP for Structure C by the Supervising Officer	0		100%	0	18-Aug-14 A																								
MS2.083	Submit DDA for Structure C	0		0%	0	29-Oct-14		02-Apr-17	886	105																				
MS2.087	Submit DDA for Structure D	0		0%	0	10-Sep-14		02-Apr-17	935	105																				
MS2.090	Approve AIP for At grade Roadworks and Other Works along NLH by the S.O.	0		0%	0	29-Sep-14		02-Apr-17	916	115																				
MS2.091	Submit DDA for At grade Roadworks and Other Works along NLH	0		0%	0	09-Oct-14		02-Apr-17	906	105																				
MS2.094	Approve AIP for At grade Roadworks & Other Works along Cheung Tung Road by S.O.	0		0%	0	29-Sep-14		02-Apr-17	916	115																				
MS2.095	Submit DDA for At grade Roadworks and Other Works along Cheung Tung Road	0		0%	0	09-Oct-14		02-Apr-17	906	105																				
MS2.097	Submit AIP for At grade Roadworks and Other Works at Southern Landfall	0		0%	0	21-Aug-14		02-Apr-17	955	39																				
MS2.098	Approve AIP for At grade Roadwrks & Other Wrks at Southern Landfall by S.O.	0		0%	0	29-Sep-14		02-Apr-17	916	45																				
MS2.099	Submit DDA for At grade Roadworks and Other Works at Southern Landfall	0		0%	0	21-Aug-14		02-Apr-17	955	84																				
MS2.100	Approve DDA for At grade Roadwrks & Other Wrks at Southern Landfall by S.O.	0		0%	0	13-Nov-14		02-Apr-17	871	308																				
MS2.102	Approve AIP for Watermains & All Assoc Wrks frm Tung Chung to South Landfall by S.O.	0		0%	0	29-Sep-14		02-Apr-17	916	45																				
MS2.103	Submit DDA for Watermains & All Assoc Wrks frm Tung Chung to South Landfall	0		100%	0	23-Jul-14 A																								
MS2.104	Approve DDA for Watermains & All Assoc Wrks frm Tung Chung to South Landfall by S.O.	0		0%	0	13-Nov-14		02-Apr-17	871	308																				
MS2.106	Approve AIP for Irrigation System for Soft Landscape Works by the Supervising Officer	0		100%	0	13-Aug-14 A																								
MS2.107	Submit DDA for Irrigation System for Soft Landscape Works	0		0%	0	08-Oct-14		02-Apr-17	907	105																				
MS2.108-3	Submit DDA for Fac Prov for TCSS Wrks for At grade Rds at Southern Landfall	0		0%	0	17-Sep-14		02-Apr-17	928	105																				
MS2.111	Submit DDA for Facilities Provision for TCSS Works for Viaducts	0		0%	0	17-Sep-14		02-Apr-17	928	105																				

<ul style="list-style-type: none"> ■ Actual Work ■ Planned Bar ■ Critical Bar ◆ Milestone 	Project ID: J3518DWP rD1-M15 Layout: J3518-DWP-3MRP Submission - M15 Filter: TASK filters: 3-Month Lookahead, No Level of Effort.	Tuen Mun - Chek Lap Kok Link - Southern Connection 3-Month Rolling Programme (Page 1 of 34 Pages) (Progress as of 21-Aug-14)	<table border="1"> <thead> <tr> <th>Date</th> <th>Revision</th> <th>Checked</th> <th>Approved</th> </tr> </thead> <tbody> <tr> <td>28-Jun-14</td> <td></td> <td>FZ</td> <td></td> </tr> <tr> <td>29-Jul-14</td> <td></td> <td>FZ</td> <td></td> </tr> <tr> <td>29-Aug-14</td> <td></td> <td>FZ</td> <td></td> </tr> </tbody> </table>	Date	Revision	Checked	Approved	28-Jun-14		FZ		29-Jul-14		FZ		29-Aug-14		FZ		DWG. No.: J3518/GCL/PGM/3MRP-M15
Date	Revision	Checked	Approved																	
28-Jun-14		FZ																		
29-Jul-14		FZ																		
29-Aug-14		FZ																		

Activity ID	Activity Name	Orig. Dur.	Act. Start / FC Early Start	Duration % Complete	Rem. Dur.	Act. Finish / FC Early Finish	Late Start	Late Finish	Total Float	Free Float	2014															
											August				September				October				November			
											21	28	04	11	18	25	01	08	15	22	29	06	13	20	27	03
Viaduct B																										
ARDD0712	Viaduct B - Erection Sequence Analysis	20	09-Jan-14 A	90%	2	25-Aug-14	07-May-14	08-May-14	-77	0																
ARDD0713	Viaduct B - Target Geometry Analysis	20	06-Feb-14 A	90%	2	25-Aug-14	07-May-14	08-May-14	-77	0																
ARDD0714	Viaduct B - Segment Geometry Schedules	10	06-Mar-14 A	90%	1	22-Aug-14	08-May-14	08-May-14	-76	1																
ARDD0714-1	Viaduct B - Final Erection Geometry (Bridge B3)	0		0%	0	25-Aug-14		08-May-14	-77	0																
ARDD0714-2	Viaduct B - Final Erection Geometry (Bridge B2 & B1)	0		0%	0	06-Oct-14		19-Jun-14	-77	0																
Viaduct A																										
ARDD0716	Viaduct A - Confirmation of Erection Sequence from Freyssinet	0		0%	0	20-Nov-14		22-Jan-15	45	0																
Viaduct C																										
ARDD0721	Viaduct C - Confirmation of Erection Sequence from Freyssinet	0		0%	0	26-Sep-14		03-Nov-14	26	0																
ARDD0722	Viaduct C - Erection Sequence Analysis	20	29-Sep-14	0%	20	24-Oct-14	04-Nov-14	01-Dec-14	26	0																
ARDD0723	Viaduct C - Target Geometry Analysis	20	27-Oct-14	0%	20	21-Nov-14	02-Dec-14	29-Dec-14	26	0																
Viaduct D																										
ARDD0726	Viaduct D - Confirmation of Erection Sequence from Freyssinet	0		0%	0	21-Aug-14		02-Jun-14	-58	0																
ARDD0727	Viaduct D - Erection Sequence Analysis	20	22-Aug-14	0%	20	18-Sep-14	03-Jun-14	30-Jun-14	-58	0																
ARDD0728	Viaduct D - Target Geometry Analysis	20	19-Sep-14	0%	20	16-Oct-14	01-Jul-14	28-Jul-14	-58	0																
ARDD0729	Viaduct D - Segment Geometry Schedules	10	17-Oct-14	0%	10	30-Oct-14	29-Jul-14	11-Aug-14	-58	0																
ARDD0729-1	Viaduct D - Final Erection Geometry (Bridge D3)	0		0%	0	30-Oct-14		11-Aug-14	-58	0																
Viaduct E5 and E6																										
ARDD0731	Viaduct E5 & E6 - Confirmation of Erection Sequence from Freyssinet	0		0%	0	21-Aug-14		09-Jun-14	-53	23																
ARDD0732	Viaduct E5 & E6 - Erection Sequence Analysis	30	24-Dec-13 A	23.33%	23	23-Sep-14	08-May-14	09-Jun-14	-76	0																
ARDD0733	Viaduct E5 & E6 - Target Geometry Analysis	30	04-Feb-14 A	23.33%	23	23-Sep-14	08-May-14	09-Jun-14	-76	0																
ARDD0734	Viaduct E5 & E6 - Segment Geometry Schedules	10	18-Mar-14 A	20%	8	02-Sep-14	29-May-14	09-Jun-14	-61	15																
ARDD0734-1	Viaduct E5 & E6 - Final Erection Geometry	0		0%	0	23-Sep-14		09-Jun-14	-76	2																
Viaduct E7 & E8																										
ARDD0736	Viaduct E7 & E8 - Confirmation of Erection Sequence from Freyssinet	0		0%	0	21-Aug-14		30-May-14	-59	23																
ARDD0737	Viaduct E7 & E8 - Erection Sequence Analysis	30	24-Dec-13 A	23.33%	23	23-Sep-14	30-Apr-14	30-May-14	-82	0																
ARDD0738	Viaduct E7 & E8 - Target Geometry Analysis	30	04-Feb-14 A	23.33%	23	23-Sep-14	30-Apr-14	30-May-14	-82	0																
ARDD0739	Viaduct E7 & E8 - Segment Geometry Schedules	10	18-Mar-14 A	20%	8	02-Sep-14	21-May-14	30-May-14	-67	15																
ARDD0739-1	Viaduct E7 & E8 - Final Erection Geometry	0		0%	0	23-Sep-14		30-May-14	-82	2																
Viaduct E1																										
ARDD0741	Viaduct E1 - Confirmation of Erection Sequence from Freyssinet	0		0%	0	21-Aug-14		19-Jun-14	-45	0																
ARDD0742	Viaduct E1 - Erection Sequence Analysis	30	22-Aug-14	0%	30	02-Oct-14	20-Jun-14	31-Jul-14	-45	0																
ARDD0743	Viaduct E1 - Target Geometry Analysis	30	03-Oct-14	0%	30	13-Nov-14	01-Aug-14	11-Sep-14	-45	0																
ARDD0744	Viaduct E1 - Segment Geometry Schedules	10	14-Nov-14	0%	10	27-Nov-14	12-Sep-14	25-Sep-14	-45	0																
Viaduct E2																										
ARDD0746	Viaduct E2 - Confirmation of Erection Sequence from Freyssinet	0		0%	0	21-Aug-14		15-May-14	-70	23																
ARDD0747	Viaduct E2 - Erection Sequence Analysis	30	24-Dec-13 A	23.33%	23	23-Sep-14	15-Apr-14	15-May-14	-93	0																
ARDD0748	Viaduct E2 - Target Geometry Analysis	30	04-Feb-14 A	23.33%	23	23-Sep-14	15-Apr-14	15-May-14	-93	0																
ARDD0749	Viaduct E2 - Segment Geometry Schedules	10	18-Mar-14 A	20%	8	02-Sep-14	06-May-14	15-May-14	-78	15																
ARDD0749-1	Viaduct E2 - Final Erection Geometry	0		0%	0	23-Sep-14		15-May-14	-93	0																
Viaduct F																										
ARDD0751	Viaduct F - Confirmation of Erection Sequence from Freyssinet	0		0%	0	09-Oct-14		20-Oct-14	7	0																
ARDD0752	Viaduct F - Erection Sequence Analysis	30	10-Oct-14	0%	30	20-Nov-14	21-Oct-14	01-Dec-14	7	0																
Reprovisioning Works																										
Chung Tung Road Realignment Viaduct B																										
ARDD0804	Viaduct B - IC/SO Approval of AIP of CTR Reprovisioning Works AIP - BP33.00	68	31-Dec-13 A	100%	0	08-Aug-14 A																				



Project ID: J3518DWP rD1-M15
 Layout: J3518-DWP-3MRP Submission - M15
 Filter: TASK filters: 3-Month Lookahead, No Level of Effort.

Tuen Mun - Chek Lap Kok Link - Southern Connection
3-Month Rolling Programme (Page 12 of 34 Pages)
(Progress as of 21-Aug-14)

Date	Revision	Checked	Approved
28-Jun-14		FZ	
29-Jul-14		FZ	
29-Aug-14		FZ	

DWG. No.:
J3518/GCL/PGM/3MRP-M15

Activity ID	Activity Name	Orig. Durn.	Act. Start / FC Early Start	Duration % Complete	Rem. Durn.	Act. Finish / FC Early Finish	Late Start	Late Finish	Total Float	Free Float	2014															
											August				September				October				November			
											21	28	04	11	18	25	01	08	15	22	29	06	13	20	27	03
ARDD0804-1	Viaduct B - IC/SO Approval of AIP of CTR Reprovisioning Works AIP - BP33.00	0		100%	0	08-Aug-14 A																				
ARDD0807	Viaduct B - IC/SO Approval of CTR Reprovisioning Works DDA - BP33.01	75	11-Jun-14 A	20%	60	13-Nov-14	04-Aug-14	24-Oct-14	-14	0																
ARDD0807-1	Viaduct B - IC/SO Approval of CTR Reprovisioning Works DDA - BP33.01	0		0%	0	13-Nov-14		24-Oct-14	-14	50																
Chung Tung Road Realignment Viaduct C																										
ARDD0881	Viaduct C - IC/SO Approval of AIP of CTR Reprovisioning Works AIP - BP34.00	68	04-Apr-14 A	60.29%	27	29-Sep-14	29-May-14	04-Jul-14	-61	0																
ARDD0881-1	Viaduct C - IC/SO Approval of AIP of CTR Reprovisioning Works AIP - BP34.00	0		0%	0	29-Sep-14		04-Jul-14	-61	0																
ARDD0887	Viaduct C - IC/SO Approval of CTR Reprovisioning Works DDA - BP34.01	75	20-Jun-14 A	20%	60	13-Nov-14	14-Apr-14	04-Jul-14	-94	0																
ARDD0887-1	Viaduct C - IC/SO Approval of CTR Reprovisioning Works DDA - BP34.01	0		0%	0	13-Nov-14		04-Jul-14	-94	6																
Remaining Reprovisioning Works (Viaduct A&D)																										
ARDD0813	Viaduct A&D - IC/SO Approval of AIP for Remaining Reprovisioning Works V-A&D BP35.00	68	30-Apr-14 A	100%	0	12-Aug-14 A																				
ARDD0813-1	Viaduct A&D - IC/SO Approval of AIP for Remaining Reprovisioning Works V-A&D BP35.00	0		100%	0	12-Aug-14 A																				
ARDD0815	Viaduct A&D - IC/SO Approval of DDA of Remaining Reprovisioning Works BP35.01	75	26-Jun-14 A	20%	60	13-Nov-14	30-Jun-15	21-Sep-15	222	0																
ARDD0815-1	Viaduct A&D - IC/SO Approval of DDA of Remaining Reprovisioning Works BP35.01	0		0%	0	13-Nov-14		21-Sep-15	222	50																
CEDD Access Track																										
ARDD0808	Preparation of Combined AIP/DDA for CEDD Access Track - BP32.01	30	09-Sep-13 A	80%	6	29-Aug-14	19-Feb-16	26-Feb-16	390	0																
ARDD0809	IC/SO Approval of Combined AIP/DDA for CEDD Access Track - BP32.01	75	01-Sep-14	0%	75	12-Dec-14	29-Feb-16	10-Jun-16	390	0																
Construction Traffic Impact Assessment																										
ARDD0811	IC/SO Approval of CTIA - AP05.00	75	25-Feb-14 A	90.67%	7	01-Sep-14	23-Mar-17	31-Mar-17	674	0																
ARDD0816	IC/SO Approval of CTIA - AP05.00	0		0%	0	01-Sep-14		31-Mar-17	674	0																
Other Design																										
Marine Permanent Navigation Aids																										
BMT0135	Preparation of MPNA DDA - BP36.01	46	11-Jun-14 A	10.87%	41	17-Oct-14	20-Feb-15	17-Apr-15	130	0																
BMT0140	IC/SO Approval of MPNA DDA BP36.01	75	20-Oct-14	0%	75	30-Jan-15	20-Apr-15	31-Jul-15	130	0																
Major Procurement																										
Marine Permanent Navigation Aids																										
PR65011	Design & Approvals for Marine Navigation Aids	150	16-Dec-13 A	52%	72	30-Jan-15	06-May-15	31-Jul-15	145	0																
Tower Cranes																										
PR66010	Procure Tower Crane Supplier	96	23-Jun-14 A	53.13%	45	16-Oct-14	08-Aug-14	30-Sep-14	-12	0																
PR66011	Procure & Deliver Tower Cranes	325	17-Oct-14	0%	325	19-Nov-15	03-Oct-14	05-Nov-15	-12	0																
PR66012	Erect & Commission Tower Crane @ E3	24	17-Oct-14	0%	24	13-Nov-14	18-Dec-14	17-Jan-15	53	136																
PR66013	Erect & Commission Tower Crane @ E4	24	17-Oct-14	0%	24	13-Nov-14	03-Oct-14	01-Nov-14	-10	106																
PR66018	Erect & Commission Tower Crane @ E9	24	17-Oct-14	0%	24	13-Nov-14	10-Jun-15	27-Jul-15	176	108																
PR66019	Erect & Commission Tower Crane @ E10	24	23-Oct-14	0%	24	19-Nov-14	16-Jan-15	12-Feb-15	70	101																
PR66020	Erect & Commission Tower Crane @ E11	24	17-Nov-14	0%	24	13-Dec-14	17-Nov-14	13-Dec-14	0	122																
Equipment Platforms for Tower Cranes																										
PR66025	Inst.Temp.Eqpt.Platform (piles & deck) @ E3	18	22-Aug-14	0%	18	16-Sep-14	27-Nov-14	17-Dec-14	73	20																
PR66026	Inst.Temp.Eqpt.Platform (piles & deck) @ E4	18	23-Aug-14	0%	18	18-Sep-14	05-Sep-14	30-Sep-14	9	19																
PR66031	Inst.Temp.Eqpt.Platform (piles & deck) @ E9	18	11-Sep-14	0%	18	06-Oct-14	11-May-15	08-Jun-15	183	7																
PR66032	Inst.Temp.Eqpt.Platform (piles & deck) @ E10	18	27-Sep-14	0%	18	22-Oct-14	23-Dec-14	15-Jan-15	70	0																
PR66033	Inst.Temp.Eqpt.Platform (piles & deck) @ E11	18	27-Oct-14	0%	18	15-Nov-14	27-Oct-14	15-Nov-14	0	0																
Deck Segment Installation Equipment																										
Launching Gantry 1																										
PR67040	Launching Gantry Design	95	05-Feb-14 A	94.74%	5	27-Aug-14	30-Aug-14	04-Sep-14	7	5																
PR67041	Launching Gantry 1 Fabrication	95	15-May-14 A	89.47%	10	02-Sep-14	25-Aug-14	04-Sep-14	2	0																
PR67042	Launching Gantry 1 Delivery	20	03-Sep-14	0%	20	26-Sep-14	05-Sep-14	29-Sep-14	2	80																
Launching Gantry 2																										
PR67043	Launching Gantry 2 Fabrication	105	16-Jun-14 A	20%	84	01-Dec-14	03-Oct-14	12-Jan-15	33	56																

■ Actual Work
■ Planned Bar
■ Critical Bar
◆ Milestone

Project ID: J3518DWP-3MRP-M15
 Layout: J3518-DWP-3MRP Submission - M15
 Filter: TASK filters: 3-Month Lookahead, No Level of Effort.

Tuen Mun - Chek Lap Kok Link - Southern Connection
3-Month Rolling Programme (Page 13 of 34 Pages)
(Progress as of 21-Aug-14)

Date	Revision	Checked	Approved
28-Jun-14		FZ	
29-Jul-14		FZ	
29-Aug-14		FZ	

DWG. No.:
J3518/GCL/PGM/3MRP-M15

Activity ID	Activity Name	Orig. Durn.	Act. Start / FC Early Start	Duration % Complete	Rem. Durn.	Act. Finish / FC Early Finish	Late Start	Late Finish	Total Float	Free Float	2014															
											August				September				October				November			
											21	28	04	11	18	25	01	08	15	22	29	06	13	20	27	03
Lifting Frames																										
Lifting Frames 1 & 2																										
PR68011	Lifting Frame 1&2 Design	70	02-Jun-14 A	50%	35	04-Oct-14	13-Aug-14	23-Sep-14	-8	0																
PR68012	Lifting Frame 1&2 Approval	60	28-Aug-14	0%	60	08-Nov-14	05-Sep-14	17-Nov-14	7	15																
PR68013	Lifting Frame 1&2 Fabrication	140	22-Aug-14	0%	140	07-Feb-15	13-Aug-14	29-Jan-15	-8	0																
Lifting Frames 3 & 4																										
PR68015	Lifting Frame 3&4 Design	70	02-Jun-14 A	60%	28	24-Sep-14	26-Jul-14	27-Aug-14	-23	2																
PR68016	Lifting Frame 3&4 Approval	60	22-Aug-14	0%	60	03-Nov-14	19-Aug-14	30-Oct-14	-3	20																
PR68017	Lifting Frame 3&4 Fabrication	140	22-Aug-14	0%	140	07-Feb-15	26-Jul-14	12-Jan-15	-23	0																
Lifting Frames 5 & 6																										
PR68019	Lifting Frame 5&6 Design	70	22-Aug-14	0%	70	14-Nov-14	08-Nov-14	31-Jan-15	64	0																
PR68020	Lifting Frame 5&6 Approval	60	04-Nov-14	0%	60	15-Jan-15	13-Feb-15	02-May-15	84	20																
PR68021	Lifting Frame 5&6 Fabrication	140	04-Nov-14	0%	140	27-Apr-15	21-Jan-15	15-Jul-15	64	0																
Unloading Frames																										
Type 1																										
PR69100	Unloading Frame Type 1 Design	50	05-May-14 A	40%	30	26-Sep-14	10-Oct-14	13-Nov-14	39	17																
PR69110	Unloading Frame Type 1 Fabrication	95	22-Aug-14	0%	95	13-Dec-14	10-Oct-14	31-Jan-15	39	0																
Type 2																										
PR69170	Unloading Frame Type 2 Design	50	05-May-14 A	40%	30	26-Sep-14	18-May-15	23-Jun-15	216	17																
PR69180	Unloading Frame Type 2 Fabrication	95	22-Aug-14	0%	95	13-Dec-14	18-May-15	08-Sep-15	216	0																
Type 3																										
PR69220	Unloading Frame Type 3 Design	50	05-May-14 A	100%	0	15-Aug-14 A																				
PR69230	Unloading Frame Type 3 (Lantau) Fabrication	95	16-Jun-14 A	60%	38	14-Oct-14	30-Jun-14	13-Aug-14	-50	0																
PR69240	Unloading Frame Type 3 Delivery	24	15-Oct-14	0%	24	11-Nov-14	14-Aug-14	11-Sep-14	-50	0																
Type 4																										
PR69250	Unloading Frame Type 4 Design	50	05-May-14 A	40%	30	26-Sep-14	29-Oct-14	02-Dec-14	55	17																
PR69260	Unloading Frame Type 4 (BCF) Fabrication	95	22-Aug-14	0%	95	13-Dec-14	29-Oct-14	23-Feb-15	55	0																
Deck Segments & Precast Pile Cap Shells																										
Preliminaries																										
MBBE0010	Set Up Precast Segment Casting Yard & Beds etc	176	15-Oct-13 A	100%	0	31-Jul-14 A																				
MBBE0012	Precast Segment Mould Design (Viaduct B)	42	15-Oct-13 A	90.48%	4	26-Aug-14	14-Aug-18	17-Aug-18	1177	1177																
MBBE0014	Precast Segment Mould Fabrication & Assembly (Viaduct B)	52	04-Mar-14 A	80.77%	10	02-Sep-14	27-May-14	07-Jun-14	-73	0																
MBBE0016	Trial Precast Segments (in pair) and Approval	45	03-Sep-14	0%	45	28-Oct-14	09-Jun-14	31-Jul-14	-73	0																
MBBE0018	Precast Segment Mould Design (Viaduct E5, E6, E7 & E8)	42	15-Oct-13 A	59.52%	17	11-Sep-14	19-Jun-14	09-Jul-14	-54	0																
MBBE0020	Precast Segment Mould Fabrication & Assembly (Viaduct E5, E6, E7 & E8)	52	12-Sep-14	0%	52	13-Nov-14	10-Jul-14	08-Sep-14	-54	35																
MBBE0024	Precast Segment Mould Design (Viaduct E2)	42	15-Oct-13 A	59.52%	17	11-Sep-14	26-May-14	14-Jun-14	-74	0																
MBBE0026	Precast Segment Mould Fabrication & Assembly (Viaduct E2)	52	12-Sep-14	0%	52	13-Nov-14	16-Jun-14	15-Aug-14	-74	35																
MBBE0030	Precast Segment Mould Design (Viaduct E1)	42	30-Jul-14 A	0%	42	13-Oct-14	09-Jul-14	26-Aug-14	-38	0																
MBBE0032	Precast Segment Mould Fabrication & Assembly (Viaduct E1)	52	14-Oct-14	0%	52	12-Dec-14	27-Aug-14	29-Oct-14	-38	14																
MBBE0036	Precast Segment Mould Design (Viaduct D)	42	11-Sep-14	0%	42	31-Oct-14	07-Jul-14	23-Aug-14	-56	0																
MBBE0038	Precast Segment Mould Fabrication & Assembly (Viaduct D)	52	01-Nov-14	0%	52	03-Jan-15	25-Aug-14	27-Oct-14	-56	21																
MBBE0042	Precast Segment Mould Design (Viaduct C)	42	30-Aug-14	0%	42	21-Oct-14	06-Dec-14	27-Jan-15	81	0																
MBBE0044	Precast Segment Mould Fabrication & Assembly (Viaduct C)	52	22-Oct-14	0%	52	20-Dec-14	28-Jan-15	01-Apr-15	81	44																
MBBE0048	Precast Segment Mould Design (Viaduct A)	42	24-Oct-14	0%	42	11-Dec-14	23-Jul-15	09-Sep-15	219	0																
MBBE0054	Precast Segment Mould Design (Viaduct F1 to F5)	42	12-Sep-14	0%	42	01-Nov-14	16-Jan-15	09-Mar-15	103	0																
MBBE0056	Precast Segment Mould Fabrication & Erection (Viaduct F1 to F5)	52	03-Nov-14	0%	52	05-Jan-15	10-Mar-15	14-May-15	103	95																
Viaduct B																										

- Actual Work
- Planned Bar
- Critical Bar
- Milestone

Project ID: J3518DWP-rD1-M15
Layout: J3518-DWP-3MRP Submission - M15
Filter: TASK filters: 3-Month Lookahead, No Level of Effort.

Tuen Mun - Chek Lap Kok Link - Southern Connection
3-Month Rolling Programme (Page 14 of 34 Pages)
(Progress as of 21-Aug-14)

Date	Revision	Checked	Approved
28-Jun-14		FZ	
29-Jul-14		FZ	
29-Aug-14		FZ	

DWG. No.:
J3518/GCL/PGM/3MRP-M15

Activity ID	Activity Name	Orig. Durn.	Act. Start / FC Early Start	Duration % Complete	Rem. Durn.	Act. Finish / FC Early Finish	Late Start	Late Finish	Total Float	Free Float	2014																
											August				September				October				November				
											21	28	04	11	18	25	01	08	15	22	29	06	13	20	27	03	10
GFXX144	A1 (A2e) - Bored Piles (1.80m dia. x 3 nos)	88	12-Aug-14 A	5.68%	83	29-Nov-14	24-Apr-15	03-Aug-15	197	0																	
Bridge A1																											
Pier A8 (A1d)																											
Preliminary Works for Land Piling																											
PA080020	A08 (A1d) - Erect MTR protective fence / Remove existing fence	12	14-Nov-14	0%	12	27-Nov-14	19-Sep-14	04-Oct-14	-44	0																	
PA080030	A08 (A1d) - Install Geo. Instru. & Baseline Monitoring	36	14-Nov-14	0%	36	27-Dec-14	19-Sep-14	01-Nov-14	-46	0																	
Pier A9 (A1c)																											
Preliminary Works for Land Piling																											
PA090010	A9 (A1c) - Implement TTMS along north side of NLH E/B	2	14-Nov-14	0%	2	15-Nov-14	24-Oct-14	25-Oct-14	-18	0																	
PA090020	A9 (A1c) - Erect boundary fence, site clearance & set up site ingress	4	17-Nov-14	0%	4	20-Nov-14	27-Oct-14	30-Oct-14	-18	6																	
Pier A10 (A1b)																											
Preliminary Works for Land Piling																											
PA100010	A10 (A1b) - Implement TTMS along north side of NLH E/B	2	14-Nov-14	0%	2	15-Nov-14	05-Nov-14	06-Nov-14	-8	0																	
Pier A11 (A1a) & Abutment A																											
Preliminary Works for Land Piling																											
PA110010	A11 (A1a) to Abutment A - Implement TTMS along north side of NLH E/B	2	14-Nov-14	0%	2	15-Nov-14	05-Nov-14	06-Nov-14	-8	0																	
PA110020	A11 (A1a) to Approach Ramp A - Erect boundary fence / water filled barrier & set up site ingri	14	17-Nov-14	0%	14	02-Dec-14	07-Nov-14	22-Nov-14	-8	0																	
Viaduct B																											
Milestones - Marine Foundation																											
GFXX155-1	B7 (B2f) - Completion of piling works	0		0%	0	10-Sep-14		08-Sep-14	-1	7																	
GFXX160-1	B6 (B3a) - Completion of piling works	0		0%	0	10-Sep-14		13-Sep-14	3	8																	
GFXX165-1	B5 (B3b) - Completion of piling works	0		100%	0	21-Jul-14 A																					
GFXX170-1	B4 (B3c) - Completion of piling works	0		0%	0	10-Sep-14		01-Sep-14	-7	8																	
GFXX175-1	B3 (B3d) - Completion of piling works	0		0%	0	24-Oct-14		02-Sep-14	-42	7																	
Milestones - Land Foundation																											
ZB00101	B14 (B1f) - Completion of piling works	0		0%	0	05-Sep-14		27-Sep-14	18	0																	
ZB00111	B13 (B1g) - Completion of piling works	0		0%	0	11-Sep-14		14-Nov-14	53	0																	
ZB00140	B10 (B2c) - Start date for piling	0	14-Oct-14	0%	0		26-Sep-14		-13	0																	
ZB00150	B9 (B2d) - Start date for piling	0	22-Jul-14 A	100%	0																						
ZB00151	B9 (B2d) - Completion of piling works	0		0%	0	13-Sep-14		16-Oct-14	26	0																	
ZB00161	B8 (B2e) - Completion of piling works	0		0%	0	23-Aug-14		25-Jul-14	-25	9																	
Bridge B3																											
Pier B1 (B3f)																											
Pile Cap Works																											
SB3F0070	B1 (B3f) - Marine Pile Cap M2 - Inst.Floating Seal & Casing Head Steelwork	7	24-Jul-14 A	100%	0	11-Aug-14 A																					
SB3F0080	B1 (B3f) - Marine Pile Cap M2 - Install precast shell in position	1	12-Aug-14 A	100%	0	12-Aug-14 A																					
SB3F0090	B1 (B3f) - Marine Pile Cap M2 - Inst.Access & make Watertight	3	13-Aug-14 A	100%	0	14-Aug-14 A																					
SB3F0100	B1 (B3f) - Marine Pile Cap M2 - Weld Fin plates/Plug Rebar & Concrete	9	15-Aug-14 A	100%	0	21-Aug-14 A																					
SB3F0110	B1 (B3f) - Marine Pile Cap M2 - Dewater precast shell / Remove Lifting Frame	2	22-Aug-14	0%	2	23-Aug-14	17-Jul-14	18-Jul-14	-23	0																	
SB3F0120	B1 (B3f) - Marine Pile Cap M2 - Pile cut down	12	25-Aug-14	0%	12	11-Sep-14	19-Jul-14	05-Aug-14	-23	0																	
SB3F0130	B1 (B3f) - Marine Pile Cap M2 - Rebar fixing, inst.inserts etc	12	12-Sep-14	0%	12	27-Sep-14	07-Aug-14	25-Aug-14	-23	0																	
SB3F0140	B1 (B3f) - Marine Pile Cap M2 - Concreting	1	29-Sep-14	0%	1	29-Sep-14	26-Aug-14	26-Aug-14	-23	0																	
SB3F0164	B1 (B3f) - Marine Pile Cap M2 - Curing incl. CJ preparation	6	30-Sep-14	0%	6	09-Oct-14	28-Aug-14	04-Sep-14	-23	0																	
Pier Works																											
SB3F0170	B1 (B3f) - Type 4B-MJ Pier Temp. Support Platform	6	30-Sep-14	0%	6	09-Oct-14	28-Aug-14	04-Sep-14	-23	0																	
SB3F0172	B1 (B3f) - Type 4B-MJ Pier Scaffolding (1st Lift)	4	10-Oct-14	0%	4	14-Oct-14	05-Sep-14	11-Sep-14	-23	0																	
SB3F0180	B1 (B3f) - Type 4B-MJ Pier Rebarwork (1st Lift)	4	16-Oct-14	0%	4	20-Oct-14	12-Sep-14	16-Sep-14	-23	0																	

Actual Work
 Planned Bar
 Critical Bar
 Milestone

Project ID: J3518DWPPrD1-M15
 Layout: J3518-DWP-3MRP Submission - M15
 Filter: TASK filters: 3-Month Lookahead, No Level of Effort.

Tuen Mun - Chek Lap Kok Link - Southern Connection
3-Month Rolling Programme (Page 18 of 34 Pages)
(Progress as of 21-Aug-14)

Date	Revision	Checked	Approved
28-Jun-14		FZ	
29-Jul-14		FZ	
29-Aug-14		FZ	

DWG. No.:
J3518/GCL/PGM/3MRP-M15

Activity ID	Activity Name	Orig. Durn.	Act. Start / FC Early Start	Duration % Complete	Rem. Durn.	Act. Finish / FC Early Finish	Late Start	Late Finish	Total Float	Free Float	2014																	
											August				September				October				November					
											21	28	04	11	18	25	01	08	15	22	29	06	13	20	27	03	10	17
GFXX170	B4 (B3c) - Dismantle removable panels of temp. platform	4	05-Sep-14	0%	4	10-Sep-14	19-Aug-14	22-Aug-14	-15	0																		
Pile Cap Works																												
SB3C0070	B4 (B3c) - Marine Pile Cap M1 - Inst.Floating Seal & Casing Head Steelwork	7	11-Sep-14	0%	7	19-Sep-14	23-Aug-14	01-Sep-14	-12	0																		
SB3C0080	B4 (B3c) - Marine Pile Cap M1 - Install precast shell in position	1	20-Sep-14	0%	1	20-Sep-14	02-Sep-14	02-Sep-14	-12	0																		
SB3C0090	B4 (B3c) - Marine Pile Cap M1 - Inst.Access & make Watertight	3	22-Sep-14	0%	3	25-Sep-14	04-Sep-14	06-Sep-14	-12	0																		
SB3C0100	B4 (B3c) - Marine Pile Cap M1 - Weld Fin plates/Plug Rebar & Concrete	9	26-Sep-14	0%	9	09-Oct-14	08-Sep-14	20-Sep-14	-12	0																		
SB3C0120	B4 (B3c) - Marine Pile Cap M1 - Dewater precast shell / Remove Lifting Frame	2	10-Oct-14	0%	2	11-Oct-14	22-Sep-14	25-Sep-14	-11	0																		
SB3C0130	B4 (B3c) - Marine Pile Cap M1 - Pile cut down	8	13-Oct-14	0%	8	22-Oct-14	26-Sep-14	07-Oct-14	-11	1																		
SB3C0140	B4 (B3c) - Marine Pile Cap M1 - Rebar fixing, inst.inserts etc	12	24-Oct-14	0%	12	06-Nov-14	09-Oct-14	23-Oct-14	-12	0																		
SB3C0150	B4 (B3c) - Marine Pile Cap M1 - Concreting	1	07-Nov-14	0%	1	07-Nov-14	24-Oct-14	24-Oct-14	-12	0																		
SB3C0160	B4 (B3c) - Marine Pile Cap M1 - Curing incl. CJ Preparation	6	08-Nov-14	0%	6	14-Nov-14	25-Oct-14	31-Oct-14	-12	0																		
Pier Works																												
SB3C0170	B4 (B3c) - Type 4B Pier Temp. Support Platform	6	08-Nov-14	0%	6	14-Nov-14	25-Oct-14	31-Oct-14	-12	0																		
SB3C0172	B4 (B3c) - Type 4B Pier Scaffolding (1st Lift)	4	15-Nov-14	0%	4	19-Nov-14	01-Nov-14	05-Nov-14	-12	0																		
SB3C0180	B4 (B3c) - Type 4B Pier Rebarwork (1st Lift)	4	20-Nov-14	0%	4	24-Nov-14	06-Nov-14	10-Nov-14	-12	0																		
Pier B5 (B3b)																												
Foundation Works																												
GFXX163	B5 (B3b) - Bored Piles (2.20m dia. x 2 nos)	72	21-May-14 A	100%	0	21-Jul-14 A																						
GFXX164	B5 (B3b) - Sonic & Interface Coring	12	22-Jul-14 A	100%	0	11-Aug-14 A																						
GFXX165	B5 (B3b) - Dismantle removable panels of temp. platform	4	12-Aug-14 A	100%	0	21-Aug-14 A																						
Pile Cap Works																												
SB3B0070	B5 (B3b) - Marine Pile Cap M1 - Inst.Floating Seal & Casing Head Steelwork	7	22-Aug-14	0%	7	30-Aug-14	22-Aug-14	01-Sep-14	0	26																		
SB3B0080	B5 (B3b) - Marine Pile Cap M1 - Install precast shell in position	1	10-Oct-14	0%	1	10-Oct-14	01-Sep-14	02-Sep-14	-26	0																		
SB3B0090	B5 (B3b) - Marine Pile Cap M1 - Inst.Access & make Watertight	3	11-Oct-14	0%	3	14-Oct-14	02-Sep-14	08-Sep-14	-25	0																		
SB3B0100	B5 (B3b) - Marine Pile Cap M1 - Weld Fin plates/Plug Rebar & Concrete	9	16-Oct-14	0%	9	25-Oct-14	08-Sep-14	22-Sep-14	-25	0																		
SB3B0120	B5 (B3b) - Marine Pile Cap M1 - Dewater precast shell / Remove Lifting Frame	2	27-Oct-14	0%	2	28-Oct-14	22-Sep-14	25-Sep-14	-25	0																		
SB3B0130	B5 (B3b) - Marine Pile Cap M1 - Pile cut down	8	29-Oct-14	0%	8	06-Nov-14	25-Sep-14	07-Oct-14	-25	0																		
SB3B0140	B5 (B3b) - Marine Pile Cap M1 - Rebar fixing, inst.inserts etc	12	07-Nov-14	0%	12	20-Nov-14	07-Oct-14	23-Oct-14	-25	0																		
Pier B6 (B3a)																												
Foundation Works																												
GFXX158	B6 (B3a) - Bored Piles (1.80m dia. x 3 nos)	72	21-Jun-14 A	100%	0	16-Aug-14 A																						
GFXX159	B6 (B3a) - Sonic & Interface Coring	12	22-Aug-14	0%	12	04-Sep-14	16-Aug-14	29-Aug-14	-5	0																		
GFXX160	B6 (B3a) - Dismantle removable panels of temp. platform	4	05-Sep-14	0%	4	10-Sep-14	30-Aug-14	03-Sep-14	-5	0																		
Pile Cap Works																												
SB3A0070	B6 (B3a) - Marine Pile Cap M2 - Inst.Floating Seal & Casing Head Steelwork	7	11-Sep-14	0%	7	19-Sep-14	04-Sep-14	13-Sep-14	-4	15																		
SB3A0080	B6 (B3a) - Marine Pile Cap M2 - Install precast shell in position	1	13-Oct-14	0%	1	13-Oct-14	15-Sep-14	15-Sep-14	-19	0																		
SB3A0090	B6 (B3a) - Marine Pile Cap M2 - Inst.Access & make Watertight	3	14-Oct-14	0%	3	17-Oct-14	16-Sep-14	19-Sep-14	-19	0																		
SB3A0100	B6 (B3a) - Marine Pile Cap M2 - Weld Fin plates/Plug Rebar & Concrete	9	18-Oct-14	0%	9	28-Oct-14	20-Sep-14	03-Oct-14	-19	0																		
SB3A0110	B6 (B3a) - Marine Pile Cap M2 - Dewater precast shell / Remove Lifting Frame	2	29-Oct-14	0%	2	30-Oct-14	04-Oct-14	06-Oct-14	-19	0																		
SB3A0120	B6 (B3a) - Marine Pile Cap M2 - Pile cut down	12	31-Oct-14	0%	12	13-Nov-14	07-Oct-14	22-Oct-14	-19	0																		
SB3A0130	B6 (B3a) - Marine Pile Cap M2 - Rebar fixing, inst.inserts etc	12	14-Nov-14	0%	12	27-Nov-14	23-Oct-14	05-Nov-14	-19	0																		
Bridge B2																												
Pier B7 (B2f)																												
Foundation Works																												
GFXX153	B7 (B2f) - Bored Piles (2.20m dia. x 2 nos)	66	03-Jul-14 A	100%	0	11-Aug-14 A																						
GFXX154	B7 (B2f) - Sonic & Interface Coring	12	22-Aug-14	0%	12	04-Sep-14	13-Aug-14	26-Aug-14	-8	0																		
GFXX155	B7 (B2f) - Dismantle removable panels of temp. platform	4	05-Sep-14	0%	4	10-Sep-14	27-Aug-14	30-Aug-14	-8	0																		

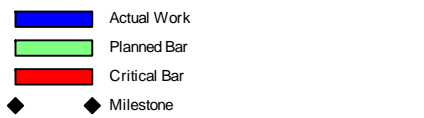
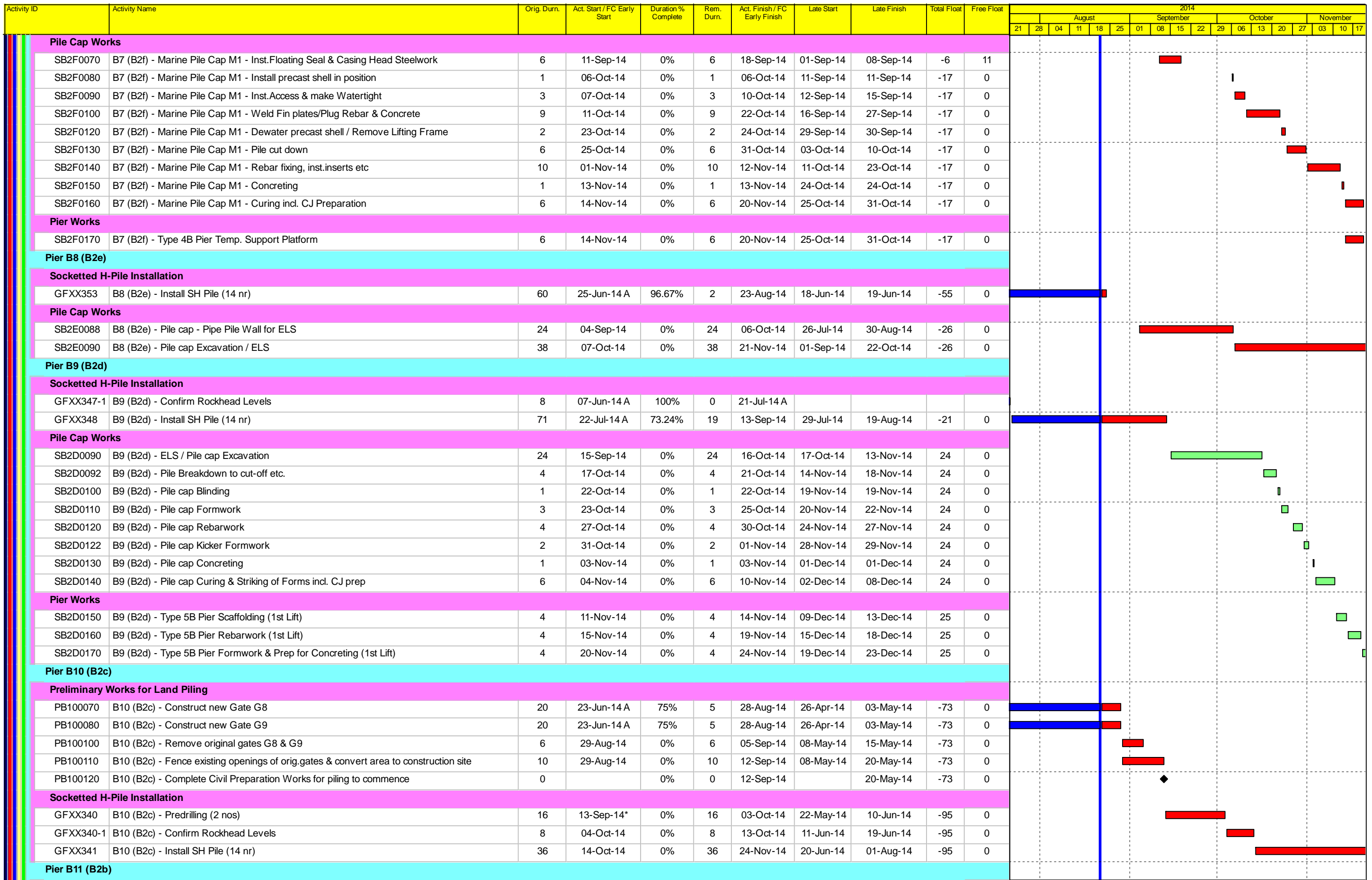
- Actual Work
- Planned Bar
- Critical Bar
- Milestone

Project ID: J3518DWP-1-M15
 Layout: J3518-DWP-3MRP Submission - M15
 Filter: TASK filters: 3-Month Lookahead, No Level of Effort.

Tuen Mun - Chek Lap Kok Link - Southern Connection
3-Month Rolling Programme (Page 20 of 34 Pages)
(Progress as of 21-Aug-14)

Date	Revision	Checked	Approved
28-Jun-14		FZ	
29-Jul-14		FZ	
29-Aug-14		FZ	

DWG. No.:
J3518/GCL/PGM/3MRP-M15



Project ID: J3518DWP.rD1-M15
 Layout: J3518-DWP-3MRP Submission - M15
 Filter: TASK filters: 3-Month Lookahead, No Level of Effort.

Tuen Mun - Chek Lap Kok Link - Southern Connection
3-Month Rolling Programme (Page 21 of 34 Pages)
 (Progress as of 21-Aug-14)

Date	Revision	Checked	Approved
28-Jun-14		FZ	
29-Jul-14		FZ	
29-Aug-14		FZ	

DWG. No.:

J3518/GCL/PGM/3MRP-M15

Activity ID	Activity Name	Orig. Durn.	Act. Start / FC Early Start	Duration % Complete	Rem. Durn.	Act. Finish / FC Early Finish	Late Start	Late Finish	Total Float	Free Float	2014															
											August				September				October				November			
											21	28	04	11	18	25	01	08	15	22	29	06	13	20	27	03
Bridge D1																										
Pier D14 (D2c)																										
Socketted H-Pile Installation																										
GFXX445-	D14 (D2c) - Confirm Rockhead Levels	8	17-Jun-14 A	0%	8	30-Aug-14	08-Jul-14	16-Jul-14	-39	0																
GFXX446-	D14 (D2c) - Installation of SH Pile (10 nr)	121	01-Sep-14	0%	121	26-Jan-15	17-Jul-14	08-Dec-14	-39	0																
Pier D15 (D2b)																										
Preliminary Works for Land Piling																										
PD150012	D15 (D2b) - Install Geo. Instru. & Baseline Monitoring	36	26-Jul-14 A	0%	36	06-Oct-14	14-Apr-14	30-May-14	-105	0																
PD150020	D15 (D2b) - Set up piling platform	20	07-Oct-14	0%	20	31-Oct-14	31-May-14	07-Jul-14	-84	0																
PD150030	D15 (D2b) - Complete Civil Preparation Works for piling to commence	0		0%	0	31-Oct-14		07-Jul-14	-84	0																
Socketted H-Pile Installation																										
GFXX445-2	D15 (D2b) - Predrilling	18	01-Nov-14	0%	18	21-Nov-14	08-Jul-14	28-Jul-14	-97	0																
Pier D16 (D2a)																										
Preliminary Works for Land Piling																										
PD160012	D16 (D2a) - Install Geo. Instru. & Baseline Monitoring	36	26-Jul-14 A	0%	36	06-Oct-14	11-Jun-18	24-Jul-18	1124	22																
PD160020	D16 (D2a) - Set up piling platform	20	01-Nov-14	0%	20	24-Nov-14	25-Jul-18	17-Aug-18	992	992																
Socketted H-Pile Installation																										
GFXX445-3	D16 (D2a) - Predrilling	18	21-Jul-14 A	100%	0	22-Jul-14 A																				
GFXX445-5	D16 (D2a) - Confirm Rockhead Levels	8	23-Jul-14 A	0%	8	30-Aug-14	05-Jul-14	14-Jul-14	-41	0																
GFXX446-3	D16 (D2a) - Installation of SH Pile (13 nr)	121	01-Sep-14	0%	121	26-Jan-15	15-Jul-14	05-Dec-14	-41	0																
Pier D17 (D1d)																										
Socketted H-Pile Installation																										
GFXX438-6	D17 (D1d) - Confirm Rockhead Levels	8	30-Jun-14 A	100%	0	13-Aug-14 A																				
GFXX439-1	D17 (D1d) - Installation of SH Pile (10 nr)	70	14-Aug-14 A	17.14%	58	31-Oct-14	04-Dec-14	12-Feb-15	86	0																
Pier D18 (D1c)																										
Socketted H-Pile Installation																										
GFXX438-7	D18 (D1c) - Confirm Rockhead Levels	8	25-Jun-14 A	100%	0	08-Aug-14 A																				
GFXX439-2	D18 (D1c) - Installation of SH Pile (10 nr)	70	09-Aug-14 A	17.14%	58	31-Oct-14	07-Nov-14	16-Jan-15	63	0																
GFXX439-5	D18 (D1c) - Selction of pile for Loading test	24	15-Nov-14	0%	24	12-Dec-14	31-Jan-15	03-Mar-15	63	0																
Pier D19 (D1b) & Abutment D																										
Socketted H-Pile Installation																										
GFXX438-8	D19 (D1b) - Confirm Rockhead Levels	8	05-Jul-14 A	100%	0	26-Jul-14 A																				
GFXX439-3	D19 (D1b) - Installation of SH Pile (6 nr)	70	29-Jul-14 A	44.29%	39	09-Oct-14	18-Nov-14	05-Jan-15	72	0																
Viaduct E																										
Viaduct E1																										
Bridge E1 - Piling & Substructure																										
Milestones																										
GFXX023A	E1D (E1a1) - Start date for piling	0	22-Aug-14	0%	0		10-Oct-14		39	0																
GFXX023A	E1C (E1a2) - Start date for piling	0	22-Aug-14	0%	0		10-Oct-14		39	0																
GFXX023A	E1B (E1a3) - Start date for piling	0	22-Aug-14	0%	0		10-Oct-14		39	0																
GFXX023A	E1A (E1a4) - Start date for piling	0	22-Aug-14	0%	0		10-Oct-14		39	0																
GFXX028A	E2C/E2D (E1b2/E1b1) - Start date for piling	0	09-Oct-14	0%	0		17-Jul-14		-69	0																
GFXX028A	E2B (E1b3) - Start date for piling	0	09-Oct-14	0%	0		17-Jul-14		-69	0																
GFXX028A	E2A (E1b4) - Start date for piling	0	09-Oct-14	0%	0		17-Jul-14		-69	0																
GFXX031-1	E1D (E1a1) - Piling Works Completion	0		0%	0	15-Oct-14		20-Jan-16	376	273																
GFXX031-2	E1C (E1a2) - Piling Works Completion	0		0%	0	15-Oct-14		17-Mar-15	125	134																
GFXX031-3	E1B (E1a3) - Piling Works Completion	0		0%	0	15-Oct-14		09-Jan-15	71	123																

Actual Work
 Planned Bar
 Critical Bar
 Milestone

Project ID: J3518DWP/PrD1-M15
 Layout: J3518-DWP-3MRP Submission - M15
 Filter: TASK filters: 3-Month Lookahead, No Level of Effort.

Tuen Mun - Chek Lap Kok Link - Southern Connection
3-Month Rolling Programme (Page 29 of 34 Pages)
(Progress as of 21-Aug-14)

Date	Revision	Checked	Approved
28-Jun-14		FZ	
29-Jul-14		FZ	
29-Aug-14		FZ	

DWG. No.:
J3518/GCL/PGM/3MRP-M15

Activity ID	Activity Name	Orig. Durn.	Act. Start / FC Early Start	Duration % Complete	Rem. Durn.	Act. Finish / FC Early Finish	Late Start	Late Finish	Total Float	Free Float	2014															
											August				September				October				November			
											21	28	04	11	18	25	01	08	15	22	29	06	13	20	27	03
Foundation Works - E5A & E5B																										
Foundation Works																										
GFXX04	E5 (E2c) - Inst.Temp.Working Platform (Light)	7	22-Aug-14	0%	7	29-Aug-14	17-Jul-14	24-Jul-14	-31	0																
GFXX046	E5 (E2c) - Predrilling (4 nos)	22	30-Aug-14	0%	22	25-Sep-14	13-Oct-14	06-Nov-14	34	0																
GFXX04	E5 (E2c) - Confirm Rockhead levels	8	26-Sep-14	0%	8	07-Oct-14	07-Nov-14	15-Nov-14	34	103																
E6A & E6B (E2d - 1/2)																										
Foundation Works - E6A & E6B																										
Foundation Works																										
GFXX050	E6 (E2d) - Inst.Temp.Working Platform (Heavy)	18	22-Aug-14	0%	18	12-Sep-14	04-Jul-14	24-Jul-14	-42	0																
GFXX05	E6 (E2d) - Inst.Temp.Working Platform (Light)	7	13-Sep-14	0%	7	20-Sep-14	25-Jul-14	01-Aug-14	-42	0																
GFXX051	E6 (E2d) - Predrilling (4 nos)	18	22-Sep-14	0%	18	14-Oct-14	27-Nov-14	17-Dec-14	55	0																
GFXX05	E6 (E2d) - Confirm Rockhead levels	8	15-Oct-14	0%	8	23-Oct-14	18-Dec-14	29-Dec-14	55	183																
E7A & E7B (E2e - 1/2)																										
Foundation Works - E7A & E7B																										
Foundation Works																										
GFXX055	E7 (E2e) - Inst.Temp.Working Platforms (Heavy)	19	22-Sep-14	0%	19	15-Oct-14	02-Aug-14	23-Aug-14	-42	0																
GFXX05	E7 (E2e) - Inst.Temp.Working Platforms (Light)	7	16-Oct-14	0%	7	23-Oct-14	25-Aug-14	01-Sep-14	-42	0																
GFXX056	E7 (E2e) - Predrilling (5 nos)	26	24-Oct-14	0%	26	22-Nov-14	18-Oct-14	17-Nov-14	-5	0																
E8A & E8B (E2f - 1/2)																										
Foundation Works - E8A & E8B																										
Foundation Works																										
GFXX060	E8 (E2f) - Inst.Temp.Working Platforms (Heavy)	32	24-Oct-14	0%	32	29-Nov-14	02-Sep-14	11-Oct-14	-42	0																
GFXX06	E8 (E2f) - Relocation & Install Temporary Removable Platform from E3, Plant & Equipment fr	7	27-Oct-14	0%	7	03-Nov-14	12-Nov-14	19-Nov-14	14	56																
E9A & E9B (E2g - 1/2)																										
Foundation Works - E9A & E9B																										
Foundation Works																										
GFXX067	E9 (E2g) - Bored Piles (2.00m dia. x 6 nr)	105	17-May-14 A	84.76%	16	10-Sep-14	11-Feb-15	04-Mar-15	142	0																
GFXX068	E9 (E2g) - Sonic & Interface Coring	12	11-Sep-14	0%	12	24-Sep-14	05-Mar-15	18-Mar-15	142	0																
GFXX069	E9 (E2g) - Dismantle temp. removable piling platform	7	25-Sep-14	0%	7	04-Oct-14	19-Mar-15	26-Mar-15	142	0																
Pile Cap Works - E9A & E9B																										
Pile Cap Works																										
SE2G00	E9 (E2g1/2) - Marine Pile Cap - Inst.Floating Seal & Casing Head Steelwork	8	15-Nov-14	0%	8	24-Nov-14	27-Mar-15	11-Apr-15	107	41																
E10A & E10B (E2h - 1/2)																										
Foundation Works - E10A & E10B																										
Foundation Works																										
GFXX072	E10 (E2h) - Bored Piles (2.20m dia. x 6 nr)	132	15-May-14 A	77.27%	30	26-Sep-14	29-Sep-14	04-Nov-14	31	0																
GFXX073	E10 (E2h) - Sonic & Interface Coring	12	22-Oct-14	0%	12	04-Nov-14	05-Nov-14	18-Nov-14	12	0																
GFXX074	E10 (E2h) - Dismantle temp. removable piling platform	7	05-Nov-14	0%	7	12-Nov-14	19-Nov-14	26-Nov-14	12	0																
Pile Cap Works - E10A & E10B																										
Pile Cap Works																										
SE2H00	E10 (E2h1/2) - Marine Pile Cap - Inst.Floating Seal & Casing Head Steelwork	8	15-Nov-14	0%	8	24-Nov-14	27-Nov-14	05-Dec-14	10	41																
Viaduct E5, E6, E7 & E8																										
Milestones - Marine Foundation																										
GFXX084-1	E11 (E5E6a/E7E8a) - Start date for piling	0	22-Aug-14	0%	0		21-Mar-14		-124	0																
GFXX089-1	E12 (E5b/E6b/E7b/E8b + Dolphins) - Start date for piling	0	22-Aug-14	0%	0		17-Mar-14		-128	0																
GFXX095-1	E13C/D (E6c/E5c+ dolphin) - Start date for piling	0	22-Aug-14	0%	0		10-Apr-14		-108	0																
Milestones - Land Foundation																										

Actual Work
 Planned Bar
 Critical Bar
 Milestone

Project ID: J3518DWPd1-M15
 Layout: J3518-DWP-3MRP Submission - M15
 Filter: TASK filters: 3-Month Lookahead, No Level of Effort.

Tuen Mun - Chek Lap Kok Link - Southern Connection
3-Month Rolling Programme (Page 31 of 34 Pages)
(Progress as of 21-Aug-14)

Date	Revision	Checked	Approved
28-Jun-14		FZ	
29-Jul-14		FZ	
29-Aug-14		FZ	

DWG. No.:
J3518/GCL/PGM/3MRP-M15

