

Figure 1. Transect Line Layout in Northwest and Northeast Lantau Survey Areas (from HKLR03 project)

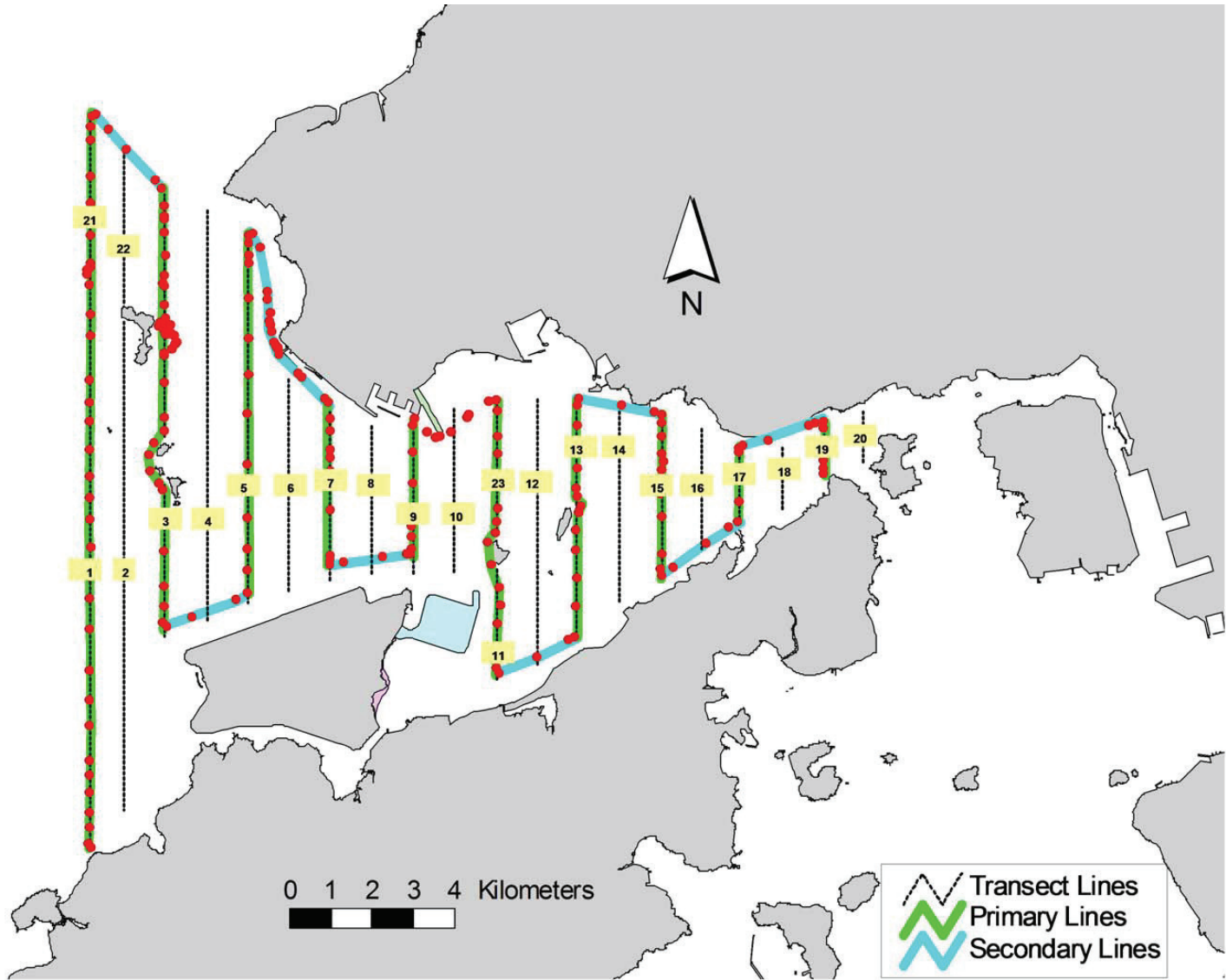


Figure 2. Survey Route on August 5th, 2014 (from HKLR03 project)

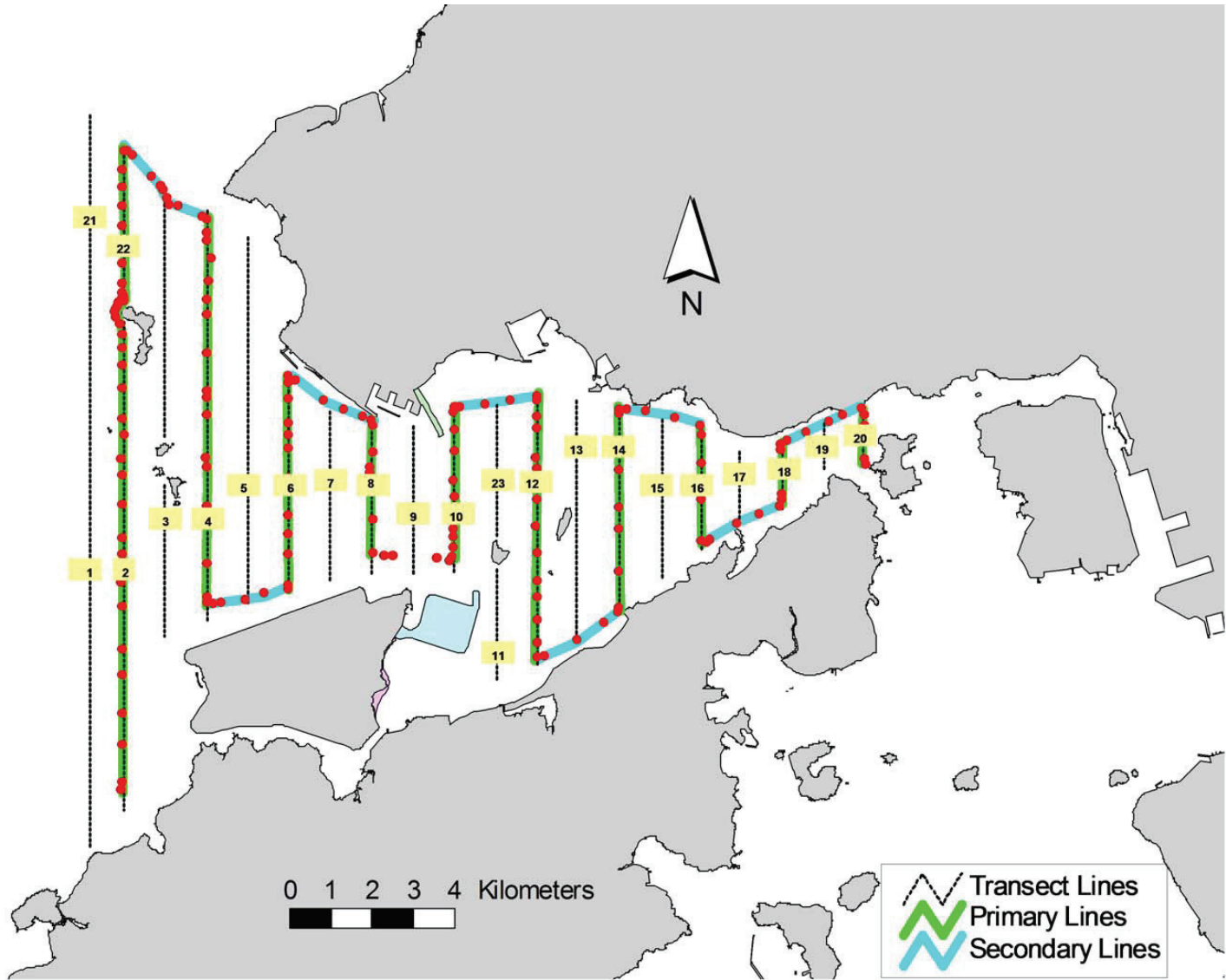


Figure 3. Survey Route on August 6th, 2014 (from HKLR03 project)

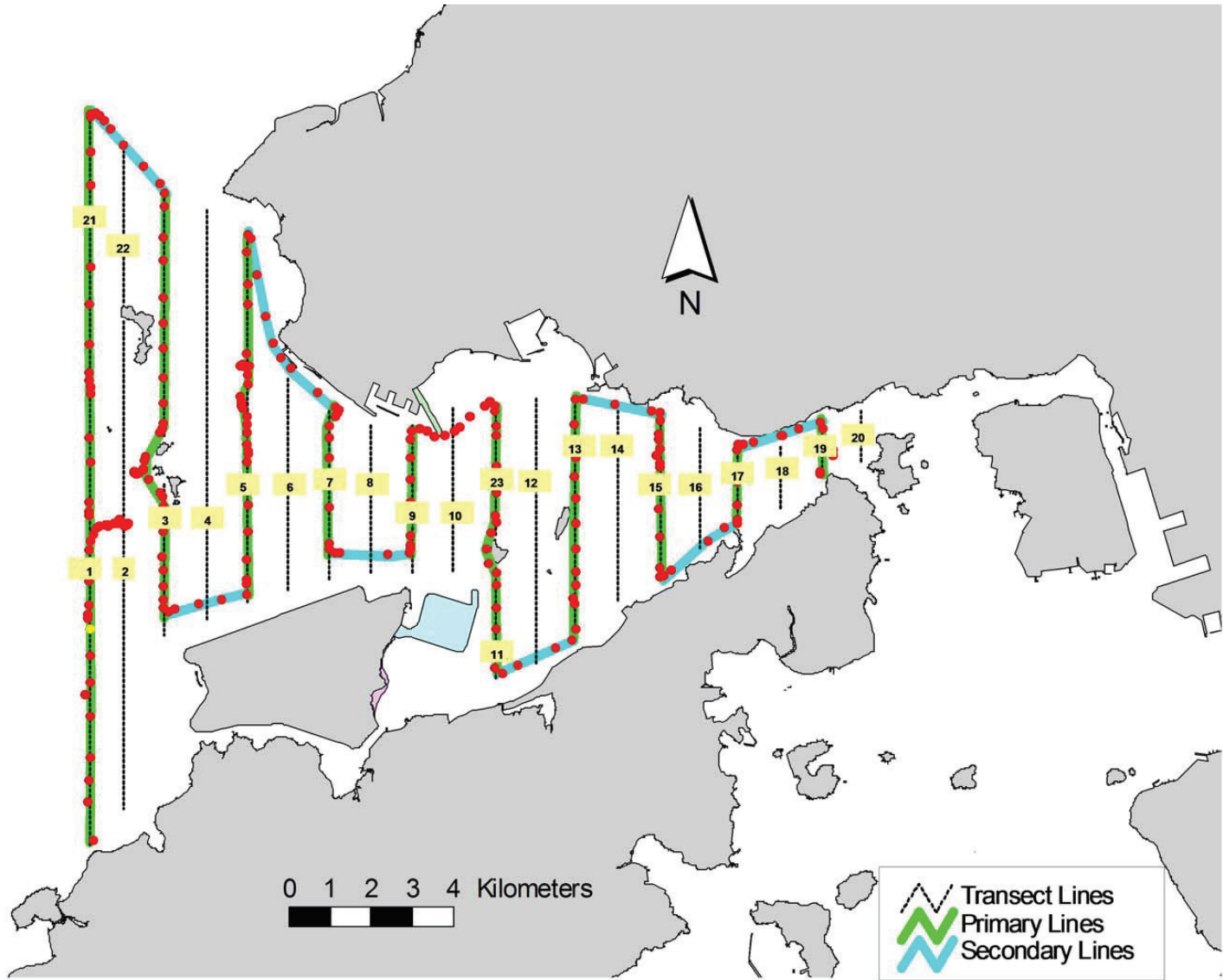


Figure 4. Survey Route on August 15th, 2014 (from HKLR03 project)

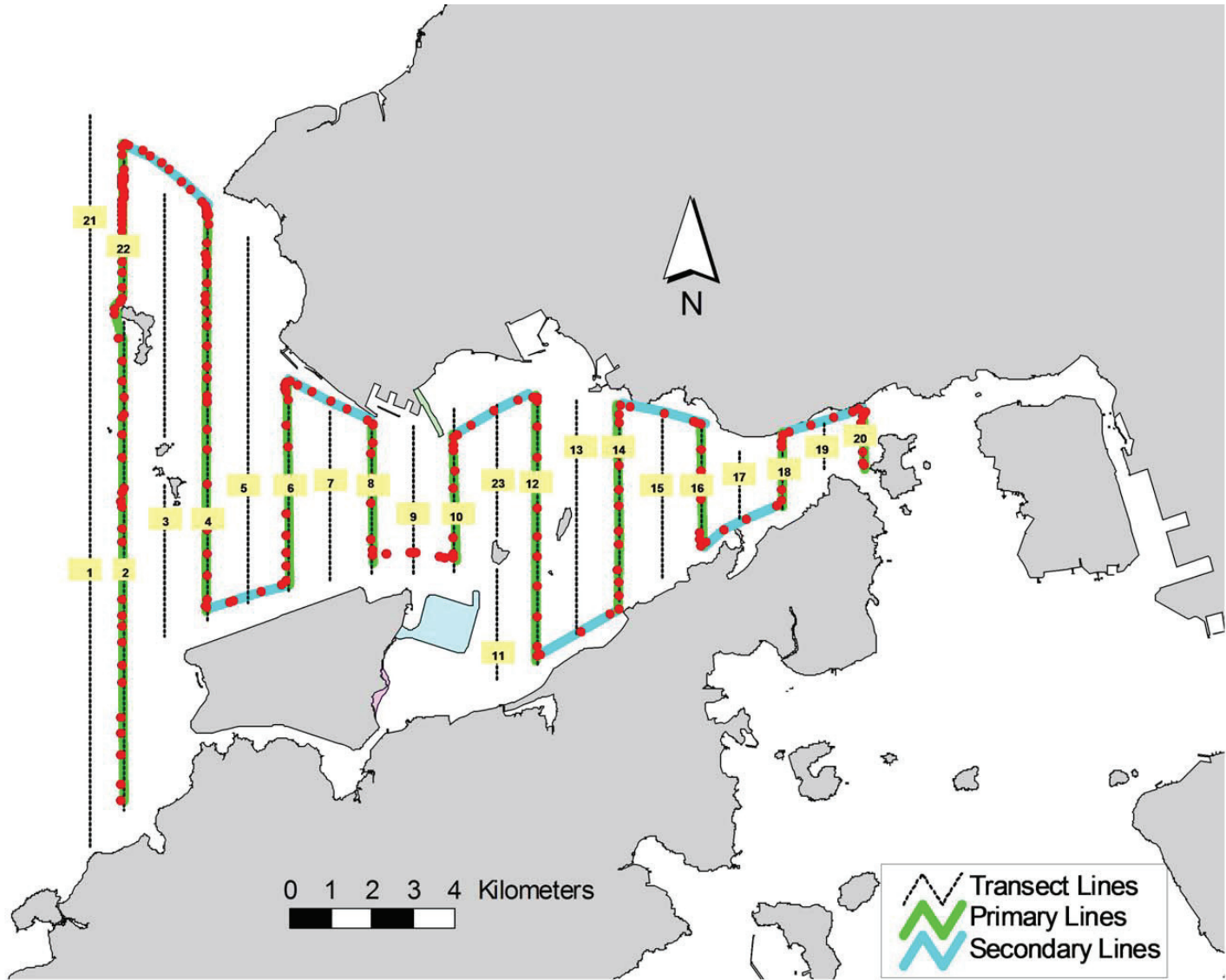


Figure 5. Survey Route on August 19th, 2014 (from HKLR03 project)

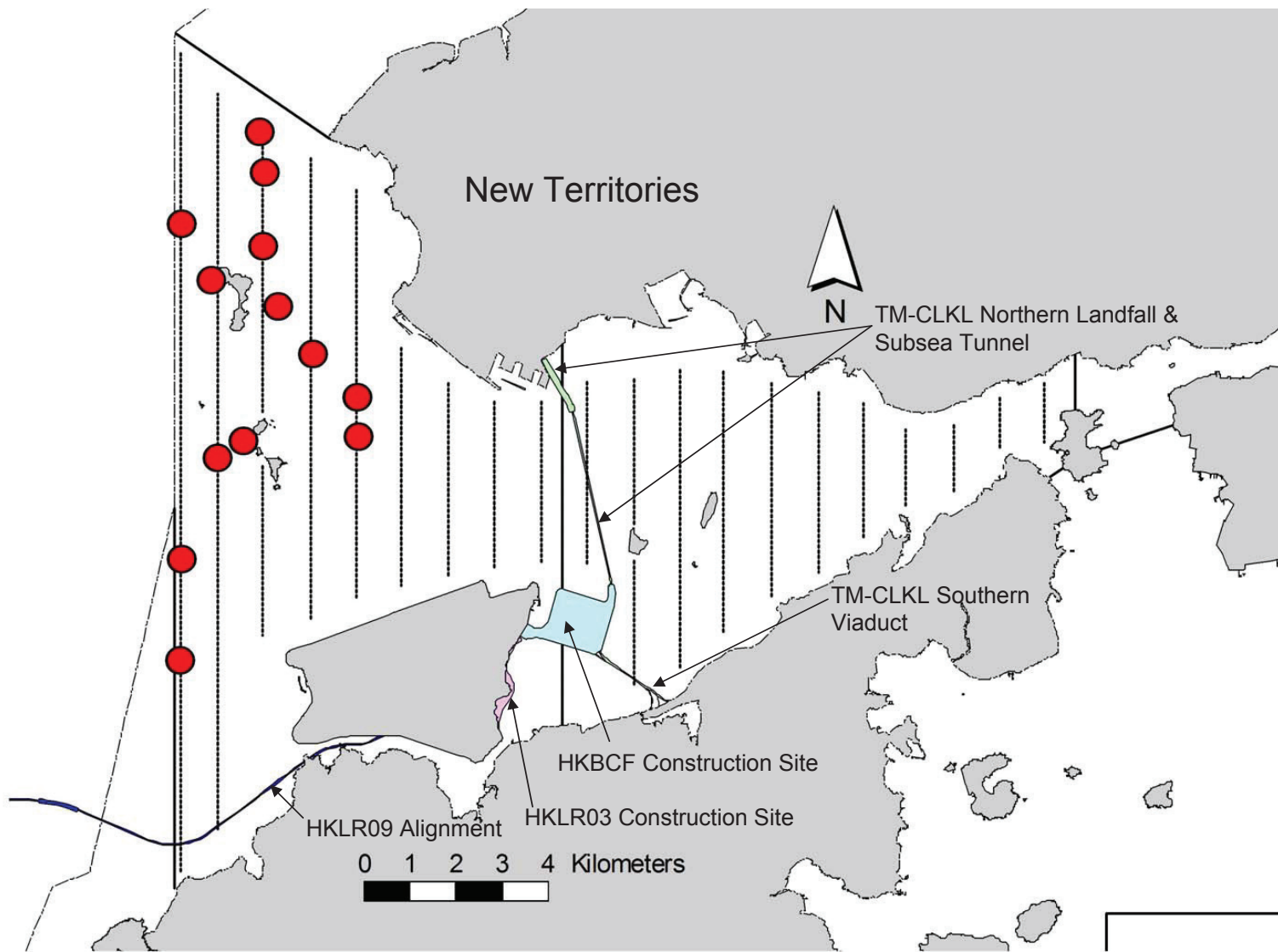


Figure 6. Distribution of Chinese White Dolphin Sightings During August 2014 HKLR03 Monitoring Surveys

Appendix I. HKLR03 Survey Effort Database (August 2014)

(Abbreviations: BEAU = Beaufort Sea State; P = Primary Line Effort; S = Secondary Line Effort)

DATE	AREA	BEAU	EFFORT	SEASON	VESSEL	TYPE	P/S
5-Aug-14	NE LANTAU	1	8.40	SUMMER	STANDARD31516	HKLR	P
5-Aug-14	NE LANTAU	2	5.80	SUMMER	STANDARD31516	HKLR	P
5-Aug-14	NE LANTAU	3	2.10	SUMMER	STANDARD31516	HKLR	P
5-Aug-14	NE LANTAU	1	6.20	SUMMER	STANDARD31516	HKLR	S
5-Aug-14	NE LANTAU	2	4.80	SUMMER	STANDARD31516	HKLR	S
5-Aug-14	NW LANTAU	1	8.00	SUMMER	STANDARD31516	HKLR	P
5-Aug-14	NW LANTAU	2	30.30	SUMMER	STANDARD31516	HKLR	P
5-Aug-14	NW LANTAU	3	1.70	SUMMER	STANDARD31516	HKLR	P
5-Aug-14	NW LANTAU	1	1.50	SUMMER	STANDARD31516	HKLR	S
5-Aug-14	NW LANTAU	2	9.90	SUMMER	STANDARD31516	HKLR	S
6-Aug-14	NW LANTAU	1	4.30	SUMMER	STANDARD31516	HKLR	P
6-Aug-14	NW LANTAU	2	21.55	SUMMER	STANDARD31516	HKLR	P
6-Aug-14	NW LANTAU	3	5.21	SUMMER	STANDARD31516	HKLR	P
6-Aug-14	NW LANTAU	1	2.30	SUMMER	STANDARD31516	HKLR	S
6-Aug-14	NW LANTAU	2	4.05	SUMMER	STANDARD31516	HKLR	S
6-Aug-14	NW LANTAU	3	0.30	SUMMER	STANDARD31516	HKLR	S
6-Aug-14	NE LANTAU	1	17.62	SUMMER	STANDARD31516	HKLR	P
6-Aug-14	NE LANTAU	2	2.26	SUMMER	STANDARD31516	HKLR	P
6-Aug-14	NE LANTAU	1	10.52	SUMMER	STANDARD31516	HKLR	S
15-Aug-14	NW LANTAU	2	7.71	SUMMER	STANDARD31516	HKLR	P
15-Aug-14	NW LANTAU	3	29.93	SUMMER	STANDARD31516	HKLR	P
15-Aug-14	NW LANTAU	3	9.92	SUMMER	STANDARD31516	HKLR	S
15-Aug-14	NW LANTAU	4	2.64	SUMMER	STANDARD31516	HKLR	S
15-Aug-14	NE LANTAU	2	17.22	SUMMER	STANDARD31516	HKLR	P
15-Aug-14	NE LANTAU	3	0.58	SUMMER	STANDARD31516	HKLR	P
15-Aug-14	NE LANTAU	2	8.54	SUMMER	STANDARD31516	HKLR	S
15-Aug-14	NE LANTAU	3	1.26	SUMMER	STANDARD31516	HKLR	S
19-Aug-14	NE LANTAU	1	1.46	SUMMER	STANDARD31516	HKLR	P
19-Aug-14	NE LANTAU	2	11.20	SUMMER	STANDARD31516	HKLR	P
19-Aug-14	NE LANTAU	3	5.91	SUMMER	STANDARD31516	HKLR	P
19-Aug-14	NE LANTAU	4	0.80	SUMMER	STANDARD31516	HKLR	P
19-Aug-14	NE LANTAU	2	4.35	SUMMER	STANDARD31516	HKLR	S
19-Aug-14	NE LANTAU	3	6.48	SUMMER	STANDARD31516	HKLR	S
19-Aug-14	NW LANTAU	2	1.16	SUMMER	STANDARD31516	HKLR	P
19-Aug-14	NW LANTAU	3	23.08	SUMMER	STANDARD31516	HKLR	P
19-Aug-14	NW LANTAU	4	3.24	SUMMER	STANDARD31516	HKLR	P
19-Aug-14	NW LANTAU	5	3.69	SUMMER	STANDARD31516	HKLR	P
19-Aug-14	NW LANTAU	3	4.32	SUMMER	STANDARD31516	HKLR	S
19-Aug-14	NW LANTAU	4	7.12	SUMMER	STANDARD31516	HKLR	S

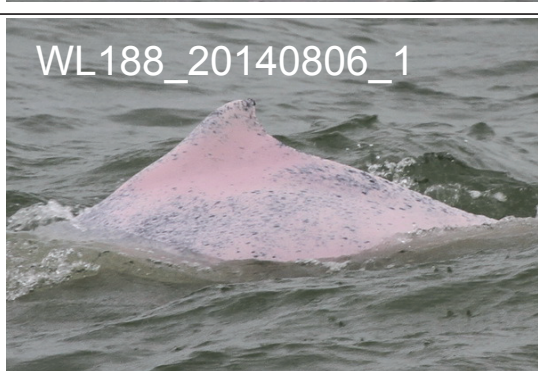
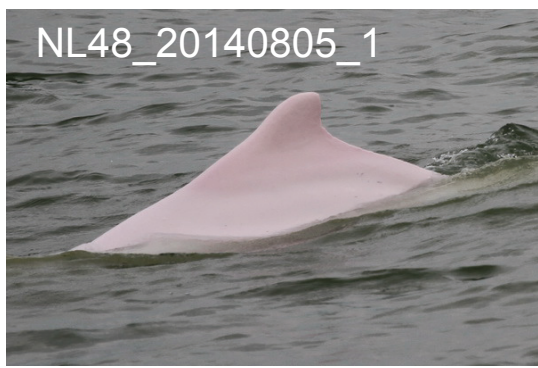
Appendix II. HKLR03 Chinese White Dolphin Sighting Database (August 2014)

(Abbreviations: STG# = Sighting Number; HRD SZ = Dolphin Herd Size; BEAU = Beaufort Sea State; PSD = Perpendicular Distance; BOAT ASSOC. = Fishing Boat Association; P/S: Sighting Made on Primary/Secondary Line)

DATE	STG #	TIME	HRD SZ	AREA	BEAU	PSD	EFFORT	TYPE	NORTHING	EASTING	SEASON	BOAT ASSOC.	P/S
05-Aug-14	1	1413	8	NW LANTAU	2	428	ON	HKLR	826185	806764	SUMMER	NONE	P
05-Aug-14	2	1435	4	NW LANTAU	2	0	ON	HKLR	827426	806458	SUMMER	NONE	P
05-Aug-14	3	1444	2	NW LANTAU	2	990	ON	HKLR	828943	806461	SUMMER	NONE	P
05-Aug-14	4	1515	2	NW LANTAU	2	452	ON	HKLR	827872	804667	SUMMER	NONE	P
06-Aug-14	1	1110	3	NW LANTAU	3	10	ON	HKLR	826730	805323	SUMMER	NONE	S
06-Aug-14	2	1151	1	NW LANTAU	2	17	ON	HKLR	829773	806359	SUMMER	NONE	S
15-Aug-14	1	1029	5	NW LANTAU	3	393	ON	HKLR	818936	804648	SUMMER	NONE	P
15-Aug-14	2	1041	7	NW LANTAU	3	15	ON	HKLR	821006	804652	SUMMER	NONE	P
15-Aug-14	3	1218	3	NW LANTAU	3	0	ON	HKLR	823429	806027	SUMMER	NONE	S
15-Aug-14	4	1305	2	NW LANTAU	2	749	ON	HKLR	823524	808510	SUMMER	NONE	P
15-Aug-14	5	1310	6	NW LANTAU	3	83	ON	HKLR	824321	808501	SUMMER	NONE	P
19-Aug-14	1	1338	2	NW LANTAU	3	105	ON	HKLR	825220	807514	SUMMER	NONE	P
19-Aug-14	2	1536	3	NW LANTAU	2	113	ON	HKLR	823076	805450	SUMMER	NONE	P

Appendix III. Individual dolphins identified during HKLR03 monitoring surveys in August 2014

ID#	DATE	STG#	AREA
NL46	05/08/14	2	NW LANTAU
NL48	05/08/14	1	NW LANTAU
	19/08/14	1	NW LANTAU
NL93	05/08/14	1	NW LANTAU
NL104	05/08/14	1	NW LANTAU
NL123	15/08/14	5	NW LANTAU
NL202	19/08/14	1	NW LANTAU
	19/08/14	2	NW LANTAU
NL242	05/08/14	1	NW LANTAU
NL247	15/08/14	2	NW LANTAU
NL261	05/08/14	1	NW LANTAU
NL272	15/08/14	5	NW LANTAU
NL278	15/08/14	2	NW LANTAU
NL284	15/08/14	5	NW LANTAU
NL285	15/08/14	5	NW LANTAU
NL286	15/08/14	5	NW LANTAU
	19/08/14	2	NW LANTAU
NL287	15/08/14	5	NW LANTAU
NL305	15/08/14	2	NW LANTAU
NL307	15/08/14	5	NW LANTAU
WL46	15/08/14	2	NW LANTAU
WL80	15/08/14	2	NW LANTAU
WL124	15/08/14	2	NW LANTAU
WL188	06/08/14	1	NW LANTAU
WL214	15/08/14	2	NW LANTAU



Appendix IV. Photographs of Identified Individual Dolphins in August 2014 (HKLR03)



WL28_20140815_2



WL46_20140815_2



WL124_20140815_2



WL188_20140815_2



WL214_20140815_2



NL123_20140815_5



NL272_20140815_5



NL284_20140815_5



NL285_20140815_5

Appendix IV. (cont'd)



NL286_20140815_5



NL287_20140815_5



NL307_20140815_5



NL48_20140819_1



NL202_20140819_1



NL202_20140819_2



NL286_20140819_2

Appendix IV. (cont'd)