


China Harbour – Zhen Hua Joint Venture

**Contract No.: CV/2015/07
Handling of Surplus Public Fill
(2016-2018)**

**TSEUNG KWAN O AREA 137 FILL BANK
QUARTERLY EM&A SUMMARY REPORT
NO.6
(FROM AUGUST 2018 TO OCTOBER 2018)**

Prepared by: 
TANG, Chung Hang

Checked by: 
LAU, Chi Leung
Environmental Team Leader

Issue Date: 15 November 2018

Report No.: ENA87693

Ref.: CEDPFRSFEM02_0_0476L.18

22 November 2018

By Email and Fax No.: 2695 3944

ETS-Testconsult Limited
8/F, Block B, Veristrong Industrial Centre
34-36 Au Pui Wan Street
Fo Tan, Hong Kong

Attention: Mr. C.L. Lau

Dear Mr. Lau,

**Re: Contract No. CV/2015/07
Handling of Surplus Public Fill (2016 – 2018)**

Quarterly EM&A Summary Report No. 6 (August to October 2018) for the Tseung Kwan O Area 137 Fill Bank

Reference is made to your submission of the draft Quarterly EM&A Summary Report No. 6 (August to October 2018) for the TKO Area 137 Fill Bank received by email on 15 November 2018 and the subsequent revision on 21 November 2018.

We are pleased to inform you that we have no further comment on the quarterly EM&A summary report.

Thank you for your attention. Please do not hesitate to contact our Jason Lai or the undersigned should you have any queries.

Yours sincerely,
For and on behalf of
Ramboll Hong Kong Limited



F. C. Tsang
Independent Environmental Checker

c.c. CEDD Attn: Ms. Lisa Yung
 CHZHJV Attn: Mr. S W Sung

Fax No.: 2714 0113
By Email

Q:\Projects\CEDPFRSFEM02\02 Project Management\02 Corr\CEDPFRSFEM02_0_0476L.18.doc

TABLE OF CONTENTS		Page
EXECUTIVE SUMMARY		
1.0	INTRODUCTION	1
2.0	PROJECT INFORMATION	
	2.1 Scope of the Project	1
	2.2 Site Description	1
	2.3 Project Activities	2
	2.4 Project Organization and Management Structure	2
	2.5 Contact Details of Key Personnel	2
3.0	SUMMARY OF EM&A REQUIREMENTS	
	3.1 EM&A Programme	2
	3.2 Monitoring Stations and Parameters	2
	3.3 Monitoring Methodology and Calibration Details	2
	3.4 Environmental Quality Performance Limits (Action/Limit Levels)	3
	3.5 Environmental Mitigation Measures	3
4.0	MONITORING RESULTS	
	4.1 Air Quality	3
	4.2 Noise	4
	4.3 Marine Water Quality	4
5.0	INSPECTION RESULTS	
	5.1 Inspection Results	5
	5.2 Status of Environmental Licensing and Permitting	5 – 6
	5.3 Advice on Solids and Liquid Waste Management Status	7
6.0	NON-COMPLIANCE OF THE ENVIRONMENTAL QUALITY PERFORMANCE LIMITS	
	6.1 Summary of Non-compliance	7
	6.2 Review of the Reasons for and the implication of non-compliance	7
	6.3 Summary of Action Taken	7
	6.4 Summary of Environmental Complaint, Notification of Summons and Successful	7
7.0	COMMENTS, CONCLUSIONS AND RECOMMENDATION	8-9
 APPENDIX		
A	Organization Chart and Lines of Communication	
B	Graphical Plots of Impact Air Quality Monitoring Data	
C	Graphical Plots of Impact Noise Monitoring Data	
D1	Graphical Plots of Impact Marine Water Quality Monitoring Data	
D2	Graphical Plots of Impact Marine Water Quality Monitoring Data(3RS project)	
E	Environmental Quality Performance (Action / Limit Levels)	
F	Event-Action Plans	
G	Work Programme	
H	Implementation Schedule of Environmental Mitigation Measures (EMIS)	
I1	Statistical Analysis of the Trend of Suspended Solids in the Quarter	
I2	Statistical Analysis of the Trend of Suspended Solids in the Quarter(3RS project)	
J	Site General Layout Plan	
K	Weather Condition	
 Figures		
Figure 1	Locations of Water Quality Monitoring Stations	
Figure 2	Noise Environmental Monitoring Station	
Figure 3	Locations of Air Quality Monitoring Stations – Tseung Kwan O Area 137 Fill Bank	
Figure 4	Locations of Water Quality Monitoring Stations (3RS project)	

Tables

2.1	Contact Details of Key Personnel
4.1	Summary of Number of Exceedances for 1-hr and 24-hr TSP Monitoring
4.2	Comparison of Baseline and Various Period of Average 1-hr and 24-hr TSP Impact Monitoring Results
4.3	Summary of Impact Monitoring Results of Noise Daytime Monitoring
4.4	Total Number of Marine Water Quality Exceedances in the Quarter
4.5	Total Number of Marine Water Quality Exceedances in the Quarter (3RS project)
4.6	Summary of Statistically Significant Results of SS
4.7	Summary of Statistically Significant Results of SS (3RS project)
5.1	Summary of Environmental Licensing and Permit Status
5.2	Estimated Offsite Waste Disposal in the Reporting Quarter
6.1	Summary of Environmental Complaints and Prosecutions

EXECUTIVE SUMMARY

This is Quarterly Environmental Monitoring and Audit (EM&A) Summary Report No.6 prepared by ETS-Testconsult Ltd (ET) for the "Contract No: CV/2015/07 – Handling of Surplus Public Fill (2016-2018) – Tseung Kwan O (TKO) Area 137 Fill Bank" (The Project).

This report documents the findings of EM&A Works conducted during the operation phase of Fill Bank at Tseung Kwan O Area 137 from August 2018 to October 2018.

Site Activities

As informed by the Contractor, the site activities in this reporting quarter were as below:

- August 2018**
1. Operation of the TKO137 Fill Bank.
 2. Delivery of public fill to Taishan;
 3. Operation of dewatering plant.
 4. Operation of bentonite pool.
 5. Concrete block breaking work.
 6. Crushing plant operation.
 7. Expansion of dewatering plant at TKOFB
- September 2018**
1. Operation of the TKO137 Fill Bank.
 2. Delivery of public fill to Taishan;
 3. Operation of dewatering plant and expanded dewatering plant
 4. Operation of bentonite pool.
 5. Concrete block breaking work.
 6. Crushing plant operation.
 7. Removal of public fill at Portion A6
 8. Concreting of concrete access road to TCWSF at TKOFB;
 9. Provision of photoelectric height limits warning system at the existing height restriction gantries;
 10. Re-construction of sampling platforms at TKOFB;
 11. Break up of concrete pavement at Portion A5c at TKOFB;
 12. Replacement of Y30 rebar with Y50 rebar at the existing wheel washing bay at TKOFB;
 13. Enhancement Rainwater Collection and Recycling Facility at TKOFB
- October 2018**
1. Operation of the TKO137 Fill Bank.
 2. Delivery of public fill to Taishan;
 3. Operation of dewatering plant and expanded dewatering plant
 4. Operation of bentonite pool.
 5. Concrete block breaking work.
 6. Crushing plant operation.
 7. Carrying out defects of Removal of public fill at Portion A6
 8. Provision of photoelectric height limits warning system at the existing height restriction gantries;
 9. Re-construction of sampling platforms at TKOFB;
 10. Break up of concrete pavement at Portion A5c at TKOFB;
 11. Replacement of Y40 rebar with Y50 rebar at the existing wheel washing bay at TKOFB;
 12. Enhancement Rainwater Collection and Recycling Facility at TKOFB
 13. Construction of concrete pavement at expanded dewatering plant
 14. Repair works for damaged at TKOFB caused by Super Typhoon

Dump truck traffic and hauling activities at Barge Handling Area (BHA) were the major dust sources. Barge delivery of fill material was also undertaken in the reporting quarter. Besides the Fill Bank operation, the other dust sources near TKO Area 137 also included operation of C&DMSF and dumping activities at the SENT Landfill.

The desilting facilities were in proper operation to avoid silt discharge and the silt curtains were properly installed. There was no sediment plume observed during the monitoring events.

The major noise sources during the reporting quarter were the dump truck traffic and construction activities near the site egress. Noise impact on the sensitive receivers was insignificant in the reporting quarter according to the results of noise monitoring and site inspections.

Environmental Monitoring Works

Noise Monitoring

No exceedance of Action and Limit levels for noise monitoring was recorded in the reporting quarter.

Air Monitoring

No exceedance of Action and Limit levels was recorded for 1-hr and 24-hr TSP monitoring in this quarter.



Contract No.: CV/2015/07
Handling of Surplus Public Fill (2016-2018)
Tseung Kwan O Area 137 Fill Bank

ENA87693
Quarterly EM&A Summary Report No.6

Marine Water Quality Monitoring

According to the summary of marine water monitoring results, no exceedance of Action and Limit levels was recorded in this reporting quarter.

Environmental Complaints, Notification of summons and successful prosecutions

No complaint was received in this quarter. Besides, No notification of summons or successful prosecutions with respect to environmental issues was received in this quarter.

1.0 INTRODUCTION

China Harbour – Zhen Hua Joint Venture (CHZH-JV) appointed Environmental Team (ET) of ETS-Testconsult Limited (ETL) to undertake the Environmental Monitoring and Audit (EM&A) for the “Contract No: CV/2015/07 –Handling of Surplus Public Fill (2016-2018) – Tseung Kwan O (TKO) Area 137 Fill Bank” (The Project).

In accordance with the Environmental Permit (No.: EP-134/2002/K) (the EP), an EM&A programme should be implemented in accordance with the procedures and requirements in the EM&A Manual of the approved EIA report (Registration No. AEIAR-060/2002). The EM&A programme for this study as stated in Section 2.3.1 of the EM&A Manual covers the following environmental aspects during the establishment, operation and removal phases of the Fill Bank at Tseung Kwan O Area 137:

- *Fugitive Dust;*
- *Noise generation from onsite activities;*
- *Water Quality; and*
- *Landscape and Visual.*

The EM&A programme requires environmental monitoring for air quality, noise and water quality and environmental site inspections for air quality, noise, water quality, landscape and visual, and waste management. The EM&A requirements for each parameter described in the following sections include:

- *All monitoring parameters;*
- *Monitoring schedules for the reporting month and forthcoming months;*
- *Action and Limit levels for all environmental parameters;*
- *Event/Action Plans;*
- *Environmental mitigation measures, as recommended in the Project EIA study final report; and*
- *Environmental requirements in contract documents.*

Baseline monitoring was completed in August and September 2002 by MaterialLab. Action and Limit Levels were established for air and water quality parameters based on the baseline monitoring results.

This quarterly report documented the findings of EM&A Works conducted during the operation phase of Fill Bank at Tseung Kwan O Area 137 from August 2018 to October 2018.

2.0 PROJECT INFORMATION

2.1 Scope of the Project

The scale and scope of the Project as stated in the EP include:

- *Site clearance;*
- *Construction of a temporary storm water system;*
- *Stockpiling of 6 million m³ of public fill;*
- *Setting up two barging points: one at the Tseung Kwan O Basin (TKO Basin) and one at the Construction and Demolition Material Sorting Facility (C&DMSF) for transporting the stockpiled public fill by barges;*
- *Construction and operation of a Construction and Demolition Material Sorting Facility (C&DMSF);*
- *Setting up a Construction and Demolition Material Crushing Facility at the TKO Basin; and*
- *Remove the temporary fill bank.*

2.2 Site Description

Tseung Kwan O Area 137 is located at the southern end of Wan Po Road. In the vicinity of the site are other industrial uses such as SENT landfill, TKO Industrial Estate, etc. Both Island Resort and Fullview Garden are also situated at more than 1.8km from the site. Other existing ASRs and NSRs, including resident developments and schools, are located at a further distance away from TKO Area 137.

2.3 Work Programme

Details of work programme in this quarter are shown in Appendix G.

2.4 Project Organization and Management Structure

The project organization chart is shown in Appendix A.

2.5 Contact Details of Key Personnel

The key personnel contact names and telephone numbers are shown in Table 2.1.

Table 2.1 Contact Details of Key Personnel

Organization	Name of Key Staff	Project Role	Tel. No.	Fax No.
CEDD	Lisa Yung, Norelle Li May Lau, James Sze, Phoebe Tang	Engineer's Representative	2762 5555	2714 0113
IEC (Ramboll)	F C Tsang	IEC	3465 2888	3465 2899
Contractor (CHZH-JV)	Michael Cheung	Project Director	2887 8118	2512 0427
ET (ETL)	C. L. Lau	ET Leader	2946 7791	2695 3944

3.0 SUMMARY OF EM&A REQUIREMENTS

3.1 EM&A Programme

The EM&A programme required environmental monitoring for air quality, noise and marine water quality and environmental site inspections for air quality, noise, marine water quality, landscape and visual, and waste management. The EM&A requirements for each parameter described in the following sections include:

- All monitoring parameters;
- Monitoring schedules for the reporting month and forthcoming months;
- Action and Limit levels for all environmental parameters;
- Event/Action Plans;
- Environmental mitigation measures, as recommended in the Project EIA study final report; and
- Environmental requirements in contract documents.

The advice on implementation status of environmental protection and pollution control/mitigation measures is summarized in Section 5 of the Report.

3.2 Monitoring Stations and Parameters

The EM&A Manual designates several locations to monitor environmental impacts in terms of air quality, noise and water quality due to the Project. The description and detailed locations of monitoring stations for air quality, noise and marine water quality are shown in Figures 1, 2 and 3 and relevant sections of this Report.

3.3 Monitoring Methodology and Calibration Details

All monitoring works were conducted and monitoring equipment was calibrated in according with the EM&A Manual.

3.4 Environmental Quality Performance Limits (Action/Limit Levels)

The environmental quality performance limits, i.e. Action/Limit Levels (AL Levels) were derived from the baseline monitoring results. If the measured environmental quality parameters exceed the AL Levels, the respective action plan will be implemented. The AL Levels for each monitoring parameter are given in Appendix E. The event action plan is given in Appendix F.

3.5 Environmental Mitigation Measures

Relevant mitigation measures were recommended in the EM&A Manual for the Contractor to implement. A list of mitigation measures is given in Appendix H.

4.0 MONITORING RESULTS

4.1 Air Quality

In accordance with the EM&A Manual, 1-hr and 24-hr TSP air quality monitoring were conducted three times and once per six days correspondingly.

No exceedance of Action and Limit levels was recorded for 1-hr and 24-hr TSP monitoring in this quarter. The trend of air quality during the reporting quarter is present in Appendix B. Wind data included wind speed and wind direction were extracted from Tseung Kwan O Station of Hong Kong Observatory and presented in Appendix K.

Major dust sources in the Fill Bank were dump truck traffic and hauling activities at BHA.

Table 4.1 presents the number of exceedances recorded in each month of the reporting quarter. The number of monitoring event included regular monitoring events and additional ones.

Table 4.1 Summary of Number of Exceedances for 1-hr and 24-hr TSP Monitoring

Monitoring Parameter	Level of Exceedance	August 2018	September 2018	October 2018
24-hr TSP	No of monitoring events	6	5	5
	Action Level	0	0	0
	Limit Level	0	0	0
1-hr TSP	No of monitoring events	15	15	17
	Action Level	0	0	0
	Limit Level	0	0	0

Table 4.2 presents the 1-hr and 24-hr TSP averages in the baseline period and for each month in the reporting quarter. It was found that the 1-hr TSP averages at both stations in the reporting quarter were higher than the baseline levels but they were within the AL Levels. Besides, the 24-hr TSP average results were below the baseline level and within the AL Levels. As a result, the Contractor should provide more mitigation measures refer to the EM&A Manual to avoid dust generation.

Table 4.2 Comparison of Baseline and Various Period of Averaged 1-hr and 24-hr TSP Impact monitoring Results

Period	1-hr TSP ($\mu\text{g}/\text{m}^3$)		24-hr TSP ($\mu\text{g}/\text{m}^3$)	
	TKO-A1	TKO-A2a	TKO-A1	TKO-A2a
Baseline (29/08 – 13/09)	195		123	
August 2018	214	205	53	44
September 2018	155	167	102	106
October 2018	203	195	89	99

4.2 Noise

Noise monitoring was required to be conducted at least once per month. Only daytime noise was monitored in the reporting quarter.

All recorded noise levels complied with the AL Levels. The registered noise levels in the past three months are plotted in Appendices C. Table 4.3 presents the limit level and average impact noise monitoring results during the reporting quarter.

Table 4.3 Summary of Impact Monitoring results of Noise Daytime Monitoring

Monitoring Location	Limit Level	August 2018	September 2018	October 2018
	Leq, dB(A)			
TKO-N1	75	62.4	62.7	63.8

The major noise sources in the reporting quarter were dump truck traffic and construction activities near the site egress. The noise impact was insignificant as the Fill Bank was remote from sensitive receivers.

4.3 Marine Water Quality

In accordance with the EM&A Manual, the marine water quality monitoring was conducted at the monitoring station (M4) and the control station (C1) in the reporting quarter.

Impact marine water quality monitoring was conducted three days per week. Measurements were taken at both mid-ebb and mid-flood tides at three depths (i.e. 1m below surface, mid depth and 1m above seabed). The AL Levels are included in Appendix E.

According to Environmental Permit (Permit no.:EP-134/2002/K) Condition 3.2, water quality survey/monitoring shall be conducted at control station C1a, monitoring stations M4a and M5 for the period from two weeks before commencement of operation of the additional 5 barging points to 4 weeks after cessation of their operation. The water quality survey/monitoring frequency and parameters at stations C1a, M4a and M5 shall be same as the requirements set out in the EM&A Manual and the monitoring results shall be incorporated in the monthly EM&A reports.

Due to "Hong Kong International Airport, Three Runway System Project Contract 3206 – Main Reclamation Works "(3RS project) operation of the additional barging point at TKO Area 137, the ET started monitoring events at the impact station M4a, M5 and the control station C1a from 14 May 2018 onwards.

Table 4.4 presents the total number of marine water quality exceedances in the reporting quarter. The trend of marine water quality in the past three months is depicted in Appendix D1.

Table 4.4 Total Number of Marine Water Quality Exceedances in the Quarter

Parameter	Exceedance Level	August 2018	September 2018	October 2018
Number of monitoring days		14	11	14
Dissolved Oxygen, DO (S&M)	Action	0	0	0
	Limit	0	0	0
Dissolved Oxygen, DO (B)	Action	0	0	0
	Limit	0	0	0
Turbidity	Action	0	0	0
	Limit	0	0	0
Suspended Solids, SS	Action	0	0	0
	Limit	0	0	0
Total Number Exceedances	Action	0	0	0
	Limit	0	0	0

Table 4.5 presents the total number of marine water quality exceedances (3RS project) in the reporting quarter. The trend of marine water quality in the past three months is depicted in Appendix D2.

Table 4.5 Total Number of Marine Water Quality Exceedances (3RS project) in the Quarter

Parameter	Exceedance Level	August 2018	September 2018	October 2018
Number of monitoring days		14	11	14
Dissolved Oxygen, DO (S&M)	Action	0	0	0
	Limit	0	0	0
Dissolved Oxygen, DO (B)	Action	0	0	0
	Limit	0	0	0
Turbidity	Action	0	0	0
	Limit	0	0	0
Suspended Solids, SS	Action	0	0	0
	Limit	0	0	0
Total Number Exceedances	Action	0	0	0
	Limit	0	0	0

A comparison between the quarterly mean/median of SS and the 1.3 times of the baseline mean was made for each tide at each station. The statistical analysis results are given in Appendix I1 and it shows that a generally better marine quality was recorded in the reporting quarter in respect to 130% of the baseline mean. Monitoring stations with significant difference ($p < 0.05$) is summarized in Table 4.6.

Table 4.6 Summary of Statistically Significant Results of SS

Monitoring Station	Significant difference?	
	Mid-ebb	Mid-flood
C1	X	X
M4	X	X

A comparison between the quarterly mean/median of SS and the 1.3 times of the baseline mean was made for each tide at each station. The statistical analysis results (3RS project) are given in Appendix I2 and it shows that a generally better marine quality was recorded in the reporting quarter in respect to 130% of the baseline mean. Monitoring stations with significant difference ($p < 0.05$) is summarized in Table 4.7.

Table 4.7 Summary of Statistically Significant Results of SS (3RS project)

Monitoring Station	Significant difference?	
	Mid-ebb	Mid-flood
C1a	X	X
M4a	X	X
M5	X	X

5.0 INSPECTION RESULTS

5.1 Implementation Status of Environmental Mitigation Measures

ET conducted weekly site inspections to monitor the Contractor's implementation of environmental mitigation measures. After each site inspection, the Contractor was notified of ET's observations and recommendations. A corrective action plan detailing the environmental observations was prepared by ET and the Contractor then completed this plan to propose/report their remedial works.

Air quality was the major environmental issue in the reporting quarter. The Contractor generally implemented most of the environmental mitigation measures in the reporting quarter. Dump truck traffic was the major dust source in the Fill Bank. Generally, the Contractor implemented adequate dust mitigation measures in the reporting quarter including dampening of haul roads, water spraying

on the truckloads, operation of automatic wheel washing facilities and mist spraying systems, dampening of fill material prior to handling or stockpiling, etc.

Dump truck traffic and construction activities near the site egress were the major noise sources. As the Fill Bank was remote from the nearby NSRs, the noise impact was minimal. The powered mechanical equipment were generally operated and maintained properly.

Regarding the observations about the damaged silt curtain, the Contractor was reminded to maintain the silt curtain properly to serve the function of refuse containment boom to confine floating refuse. Furthermore, Dust emission was found upward trend, the Contractor was reminded to increase the watering to avoid dust emission.

Although there were a few observations regarding dust control, such as fugitive dust emission and accumulation of fill materials, the Contractor rectified most of these problems. Besides, the Contractor should increase the site watering in order to minimize the fugitive dust emissions.

The germination rate on the panel was satisfactory in this reporting quarter. The Contractor was reminded to maintain the panel properly.

5.2 Status of Environmental Licensing and Permitting

The status of licences and permits is summarized in Table 5.1.

Table 5.1 Summary of environmental licensing and permit status

Description	Permit No.	Valid Month		Section
		From	To	
Amended Environmental Permit	EP-134/2002/K	04/02/13	---	<ul style="list-style-type: none"> ▪ Site clearance ▪ Construction of a temporary storm water system ▪ Stockpiling of 6 million m3 of public fill ▪ Setting up two barging points for transporting the stockpiled public fill by barges ▪ Setting up a temporary barging point at the existing Explosive Off-loading Barging Point for the month of May 2004 to December 2004 for transporting the stockpiled public fill by barge ▪ Construction of operation of a construction and Demolition Material Sorting Facility (C&DMSF) ▪ Setting up a Construction and Demolition Material Crushing Facility at the TKO Basin ▪ Remove the temporary fill bank
Chemical Waste Producer	5919-839-C4181-01	19/04/17	---	Spent battery cell containing heavy metals and spent lubricating oil

Description	Permit No.	Valid Month		Section
		From	To	

Marine Dumping Permit	EP/MD/19-008	01/07/18	30/09/18	Approval for dumping 2,500,000 tons (approximately equal to 1,388,888 cu.m. bulked quantity) of Public Fill (Reclamation Materials) from Tseung Kwan O Area 137 Fill Bank and Tuen Mun Area 38 Fill Bank to designated dumping area at Guanghaiwan of Taishan
Marine Dumping Permit	EP/MD/19-029	01/10/18	31/12/18	Approval for dumping 2,000,000 tons (approximately equal to 1,111,111 cu.m. bulked quantity) of Public Fill (Reclamation Materials) from Tseung Kwan O Area 137 Fill Bank and Tuen Mun Area 38 Fill Bank to designated dumping area at Guanghaiwan of Taishan
Effluent Discharge License	WT00029178-2017	27/09/17	30/09/22	Effluent, Surface Run-off, and all other wastewater discharges from screen and sedimentation tank
Billing Account for Waste Disposal	7027643	22/05/17	---	---
Notification Pursuant to Section 3(1) of the Air Pollution Control (Construction Dust)	415682	12/04/17	---	---

5.3 Advice on Solids and Liquid Waste Management Status

The Contractor usually disposed of non-inert waste, including general refuse and materials segregated from the existing stockpiles, to SENT landfill. Table 5.2 summarizes data on offsite waste disposal in the quarter.

Table 5.2 Estimated Offsite Waste Disposal in the Reporting Quarter

Waste Type	August 2018	September 2018	October 2018
Public Fill ('000m ³)	105.64	0	149.98
C&D Waste (general refuse) ('000kg)	378.69	578.51	349.06
Chemical Waste (kg/L)	0	0	0

The site toilet and shower room and several chemical toilets were in use throughout the reporting quarter. Discharge from the site toilet and shower room was made to the additional drainage DP4 after passing through the sewage treatment system. A licensed collector also regularly collected waste from the chemical toilets.

6.0 NON-COMPLIANCE OF THE ENVIRONMENTAL QUALITY PERFORMANCE LIMITS

6.1 Summary of Non-compliance

In this reporting quarter, no exceedance of Action and limit levels on marine water quality was recorded.

No exceedances on 1-hour and 24-hour TSP monitoring results were recorded in this quarter.

Besides, no day-time noise level measured at the monitoring station exceeded the Action and Limit Level in this quarter.

6.2 Review of the Reasons for and the Implications of Non-compliance

Since there was no exceedance recorded in this quarter, the review of the reasons for the non-compliance was not required.

6.3 Summary of Actions Taken

Since there was no exceedance recorded in this quarter, no further action was not required to be taken.

6.4 Summary of Environmental Complaint, Notifications of Summons and Successful Prosecutions Handling

No complaint was received in this quarter. Besides, no notification of summon and successful prosecution was received in this quarter.

A summary of environmental complaints and prosecutions was given in Table 6.1.

Table 6.1 Summary of Environmental Complaints and Prosecutions

<i>Period</i>	<i>Complaints logged</i>	<i>Summon served</i>	<i>Successful Prosecution</i>
<i>August 2018</i>	<i>0</i>	<i>0</i>	<i>0</i>
<i>September 2018</i>	<i>0</i>	<i>0</i>	<i>0</i>
<i>October 2018</i>	<i>0</i>	<i>0</i>	<i>0</i>
<i>Cumulative</i>	<i>3</i>	<i>0</i>	<i>0</i>

7.0 COMMENTS, CONCLUSIONS AND RECOMMENDATION

In this quarter, major activity in the Fill Bank was the import and dumping of fill material. Air quality was the major environmental issue in the Fill Bank. Generally, the Contractor implemented most of the mitigation measures to minimize the dust impact.

No exceedance of Action and Limit levels was recorded for 1-hour and 24-hour TSP monitoring in this quarter.

No exceedance of Action and Limit Level of noise was recorded in this reporting quarter.

No exceedance of Action and limit level on marine water quality was recorded in this quarter

No complaint was received in this quarter. Besides, no notification of summon and successful prosecution was received in this quarter.

According to the ET weekly site inspection and IEC site audits carried out in this quarter, it was indicated that site practices of the Contractor were generally undertaken in an environmentally acceptable manner and the overall site environmental performance was up to standard. The Contractor generally implemented sufficient dust mitigation measures, including operation of the mist spraying systems and automatic wheel washing facilities, dampening of haul roads and stockpiling areas.

According to the environmental site inspections performed in this quarter, the following recommendations were provided:

Air Quality

- Ensure the frequency of water spraying on haul roads, unloading areas and stockpiles to be sufficient to suppress the dust sources;
- Provide proper maintenance for the powered mechanical equipment and barges to avoid emission of dark smoke;
- Provide water spraying onto the truckloads during inspection of fill material;
- Conduct road sweeping on all paved haul roads and public roads especially outside and near the site egress by the road sweeper. Undertake water spraying on stockpiling area by water boswer;
- Erect adequate speed limit signs to advise the truck drivers of the speed limit;
- Operate mist spraying systems and automatic water sprinklers in the Fill Bank;
- Implement the dust mitigation measures for the site activities;

- Designate proper haul roads to ensure effective water spraying; and
- Ensure all vehicles to be washed before leaving the site egress by provision, operation and maintenance of automatic wheel washing facilities.

Noise

- Conduct noisy activities at a farther location from the NSRs.

Water Quality

- Maintain the drainage system, including the trapezoidal channels, permanent desilting chambers, DP3 & DP4 regularly;
- Operate and maintain the silt curtains regularly;
- Operate the cleaning vessel within the TKO Basin regularly;
- Provide proper treatment for the oil discharge from the area near air monitoring station TKO-A1;
- Clean up the fill material on the concrete pavement at BHA frequently; and
- Remove the stagnant water or provide approved pesticides for the stagnant water in the permanent desilting chambers, if any.

Chemical and Waste Management

- Remove waste materials from the site to avoid accumulation regularly;
- Handle and store chemical wastes properly;
- Remove unwanted material in the existing stockpiles and avoid further dumping of such material;
- Provide and maintain sufficient drip trays for diesel drums, chemical containers, chemical waste storage drums and diesel operated generator set;
- Maintain mesh screen on top of the additional drainage, DP3 to avoid improper dumping of rubbish;
- Maintain good housekeeping at the workshop area;
- Ensure sufficient tarpaulin sheets are provided to cover drip trays; and
- Avoid soil being polluted during oil filling and equipment maintenance; hence, properly remove and store the contaminated soil, if any.

Landscape and Visual

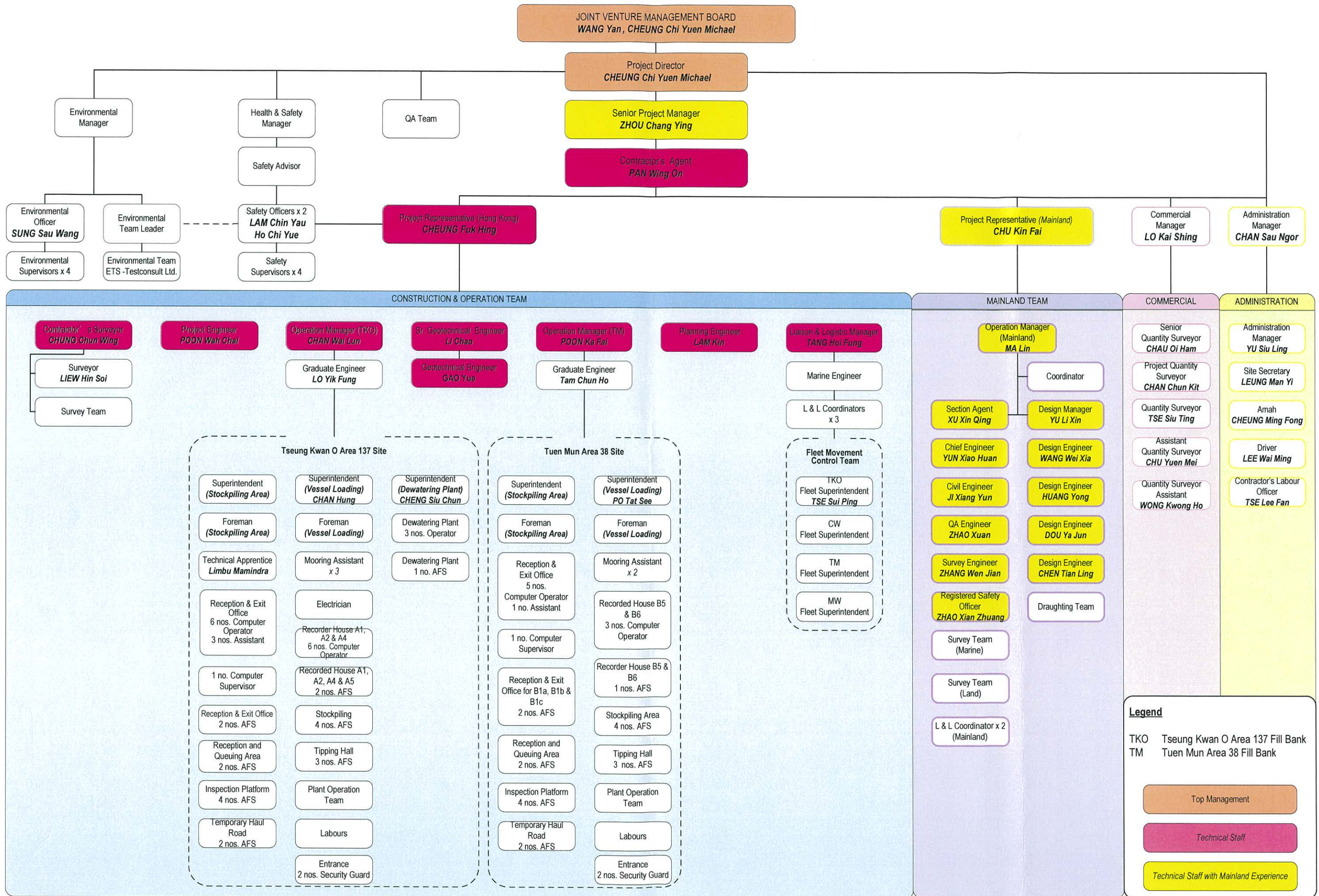
- Provide hydroseeding on the exposed slopes, on which the final profile has been formed;
- Erect all the site hoarding/chaining fences in accordance with agreed design at proper location;
- Maintain the hydroseeding slopes in accordance with the Landscape Plan.

- END OF REPORT -

Appendix

A

Organization Chart



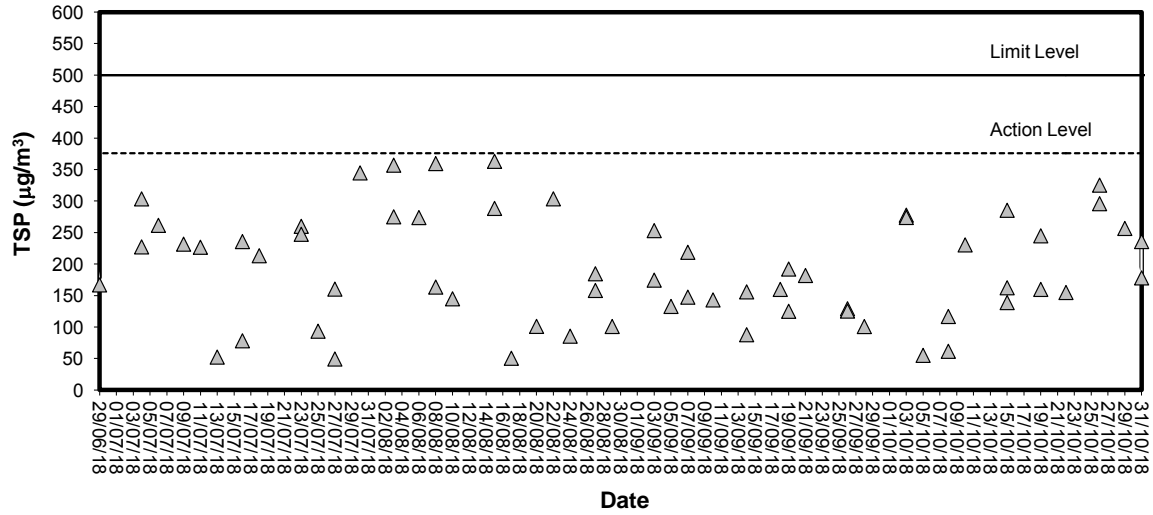
Appendix

B

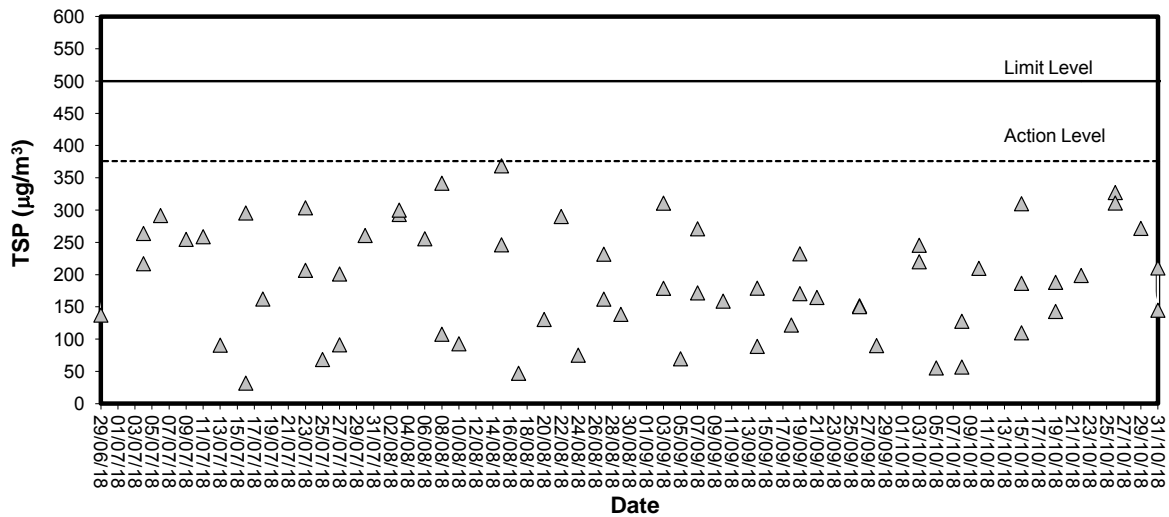
Graphical Plots of Air Quality Monitoring Data



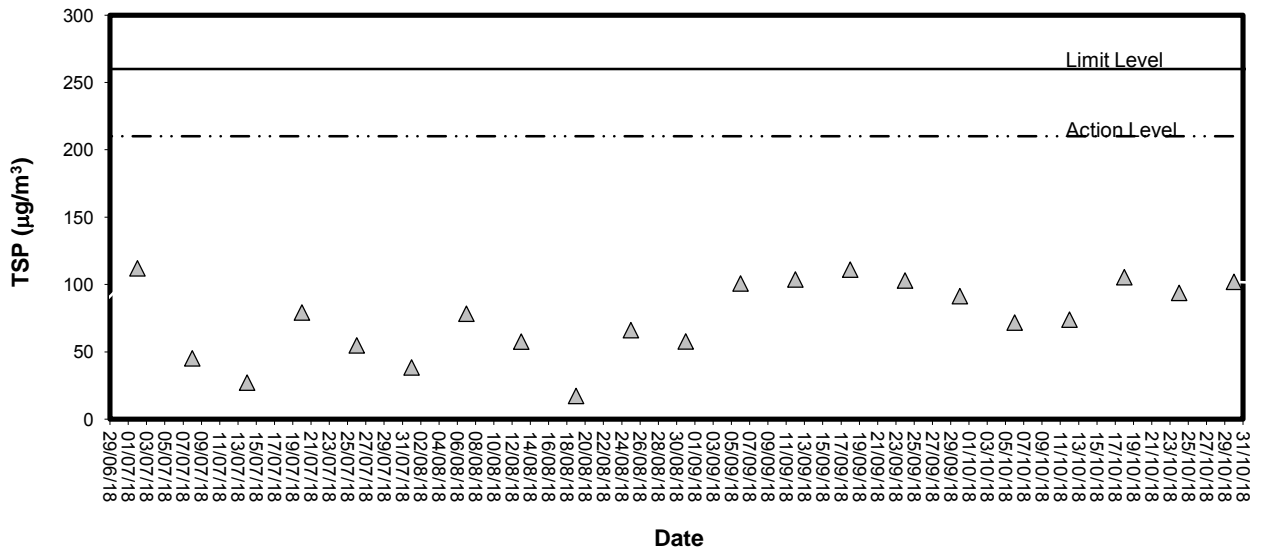
1-hour TSP level at TKO-A1



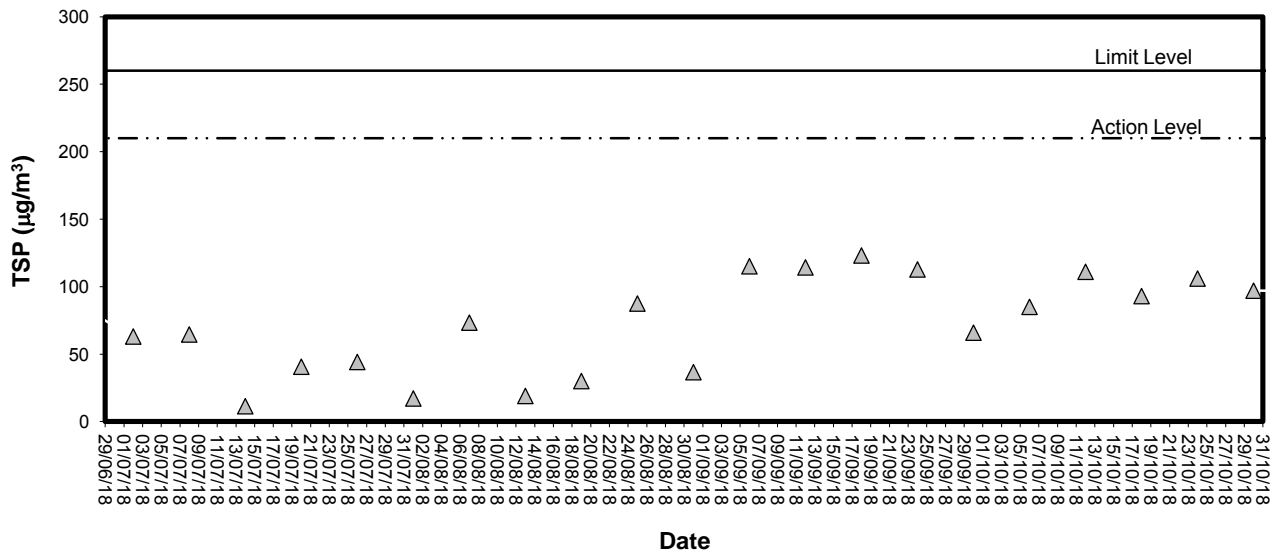
1-hour TSP level at TKO-A2a



24-hour TSP level at TKO-A1



24-hour TSP level at TKO-A2a

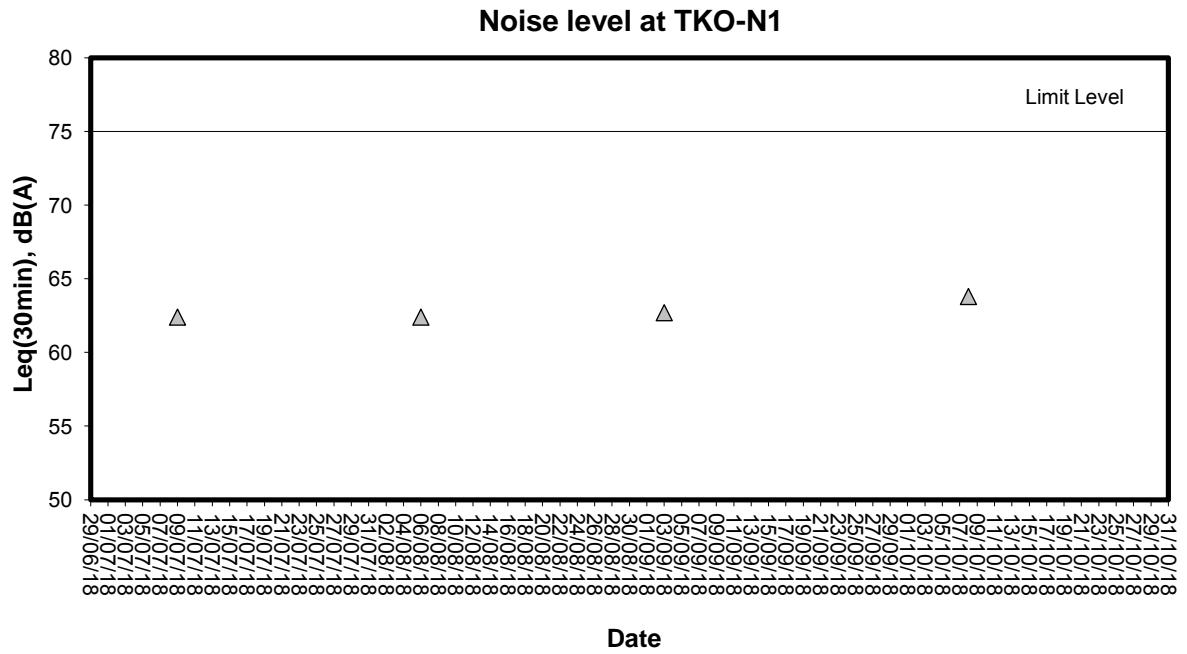


Appendix

C

Graphical Plots of Noise Monitoring Data

Noise Monitoring (Day-time)

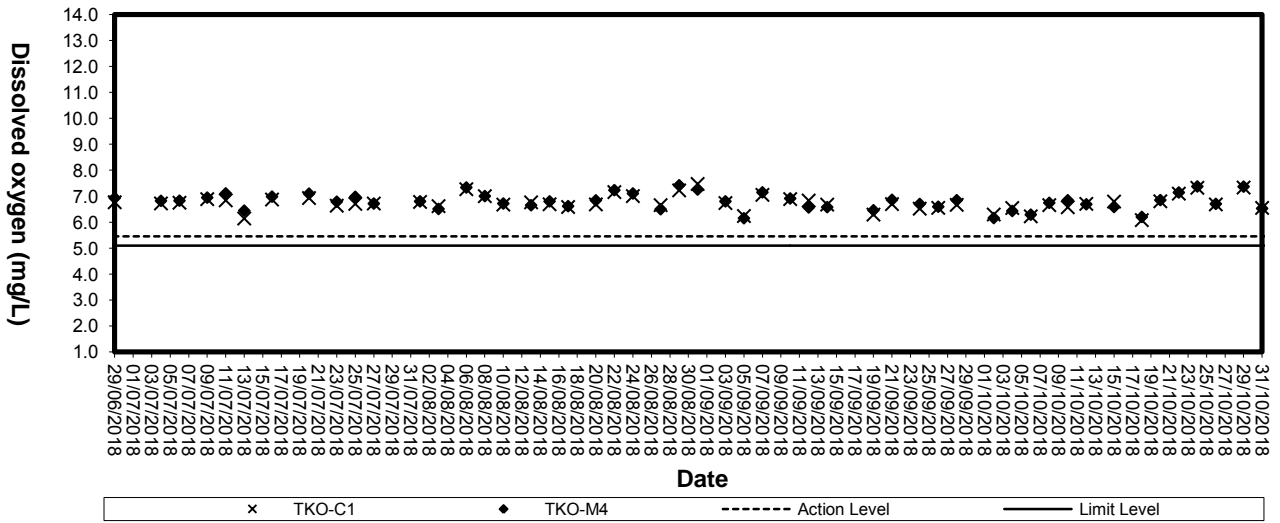


Appendix

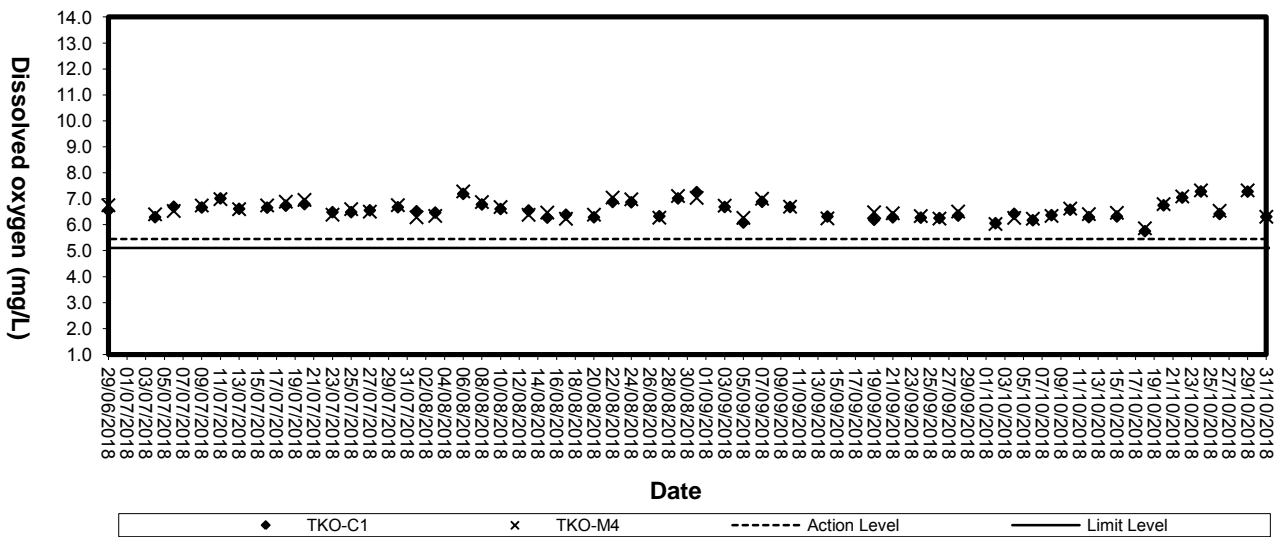
D1

Graphical Plots of Impact Marine Water Quality Monitoring Data

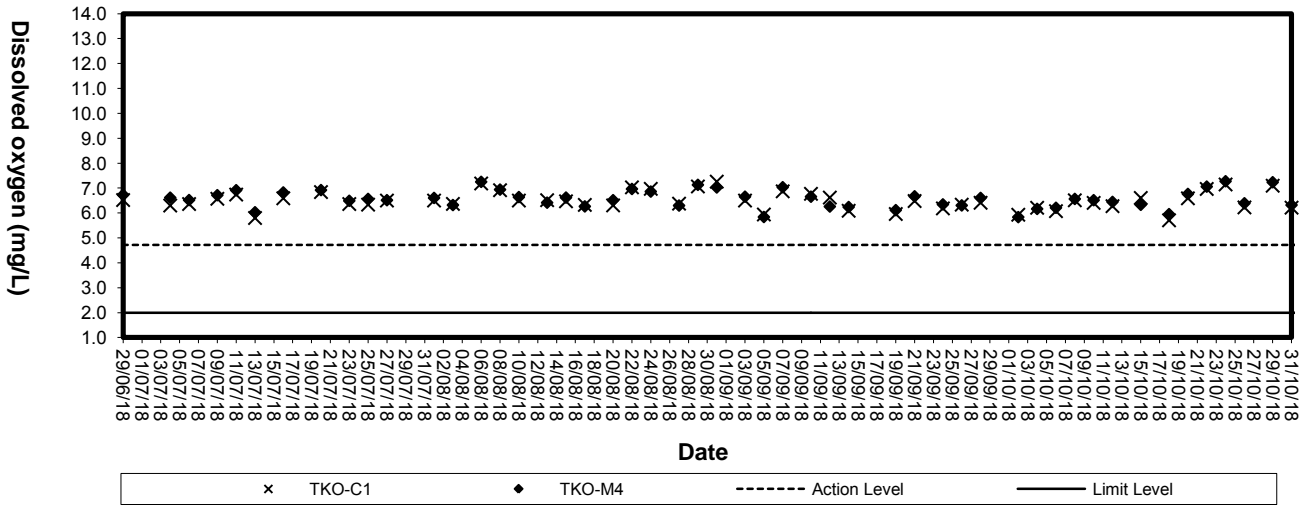
Dissolved Oxygen (Surface & Middle) at Mid-Flood Tide



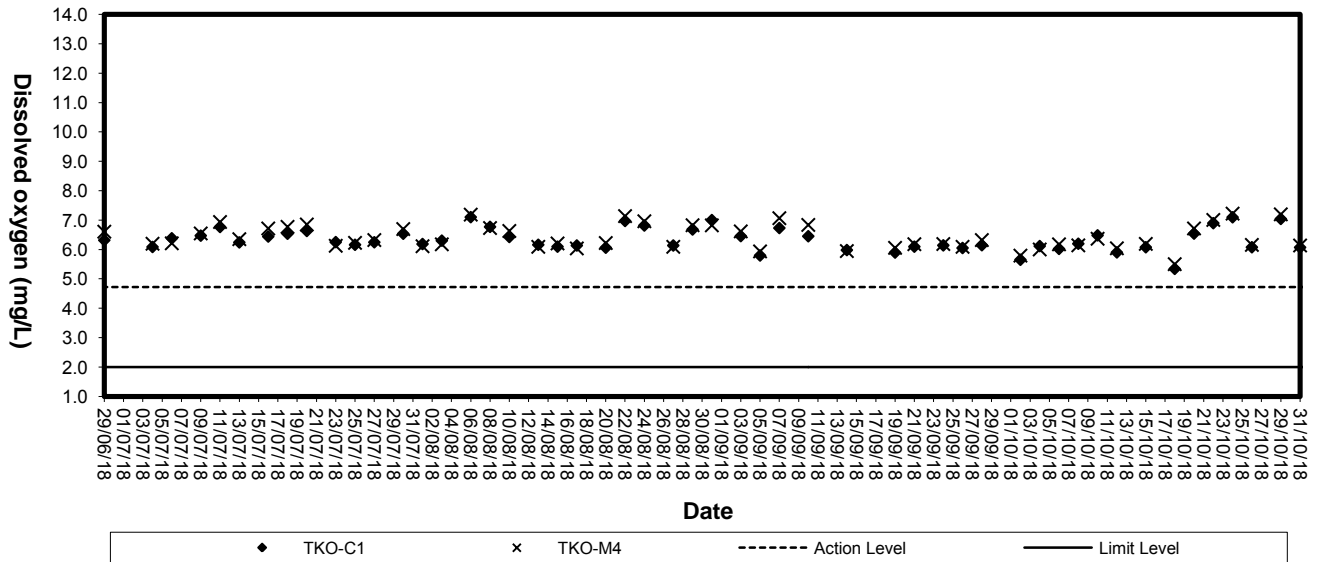
Dissolved Oxygen (Surface & Middle) at Mid-Ebb Tide



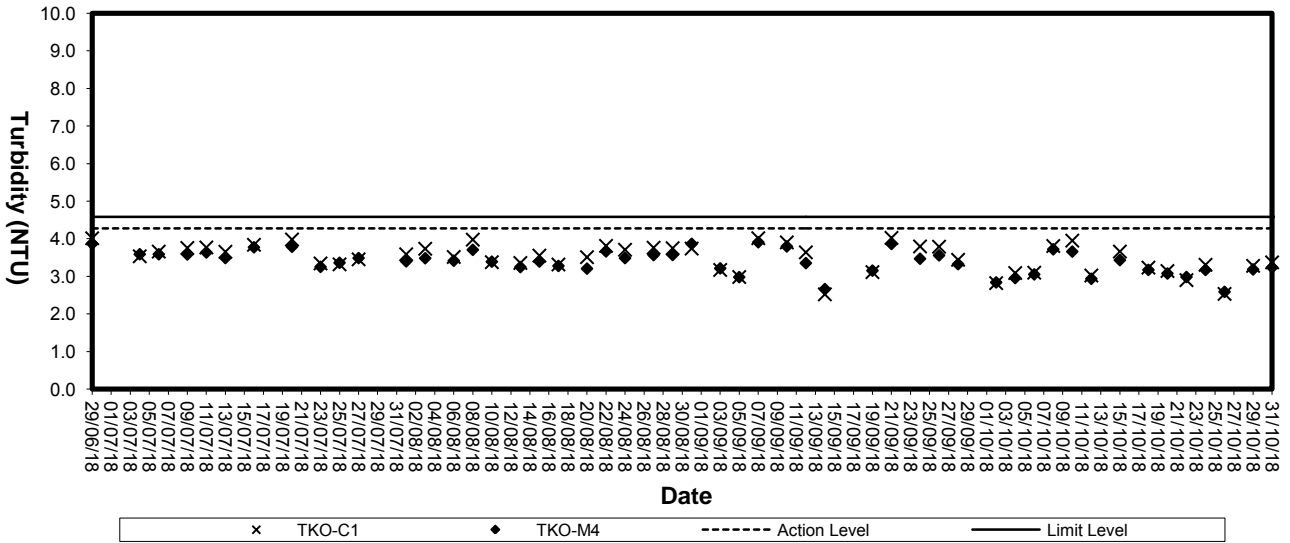
Dissolved Oxygen (Bottom) at Mid-Flood Tide



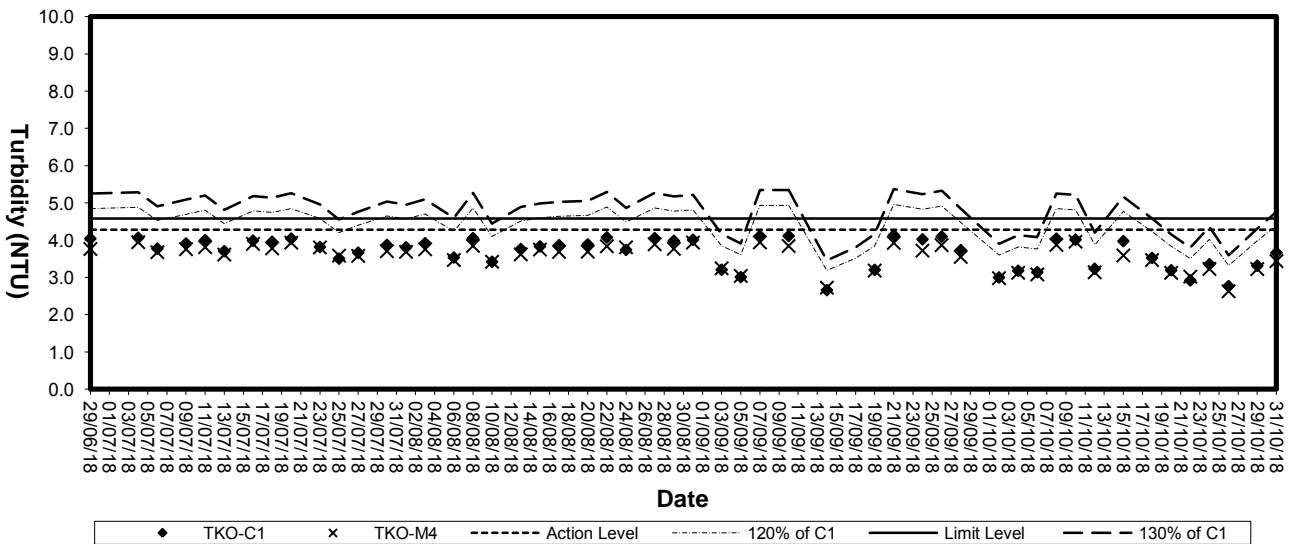
Dissolved Oxygen (Bottom) at Mid-Ebb Tide



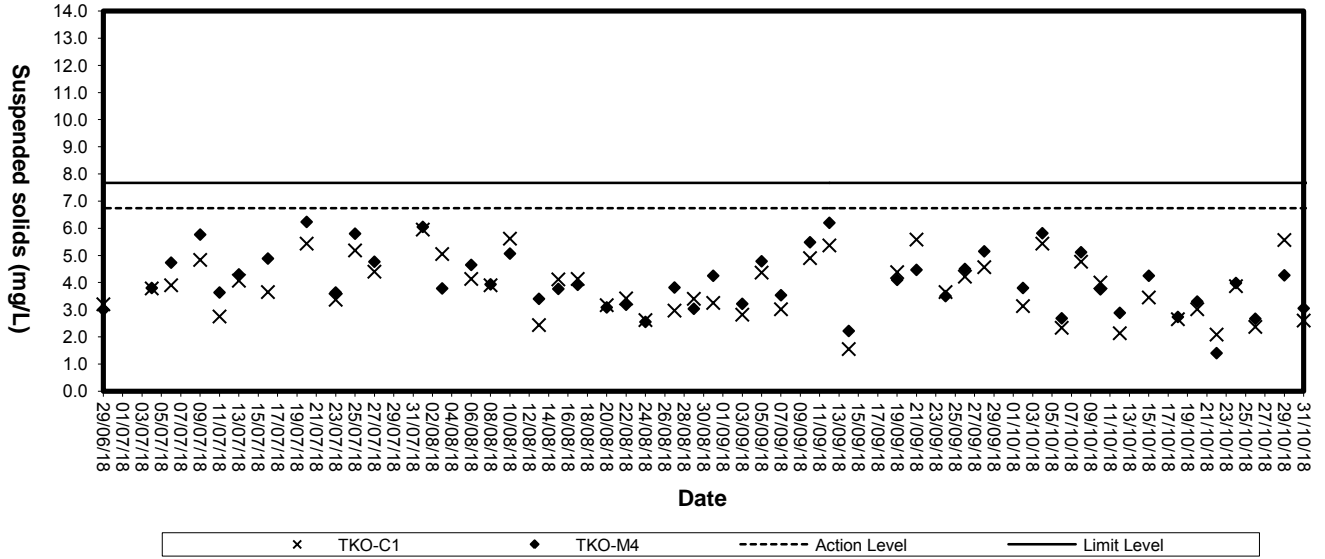
Turbidity (Depth-average) at Mid-Flood Tide



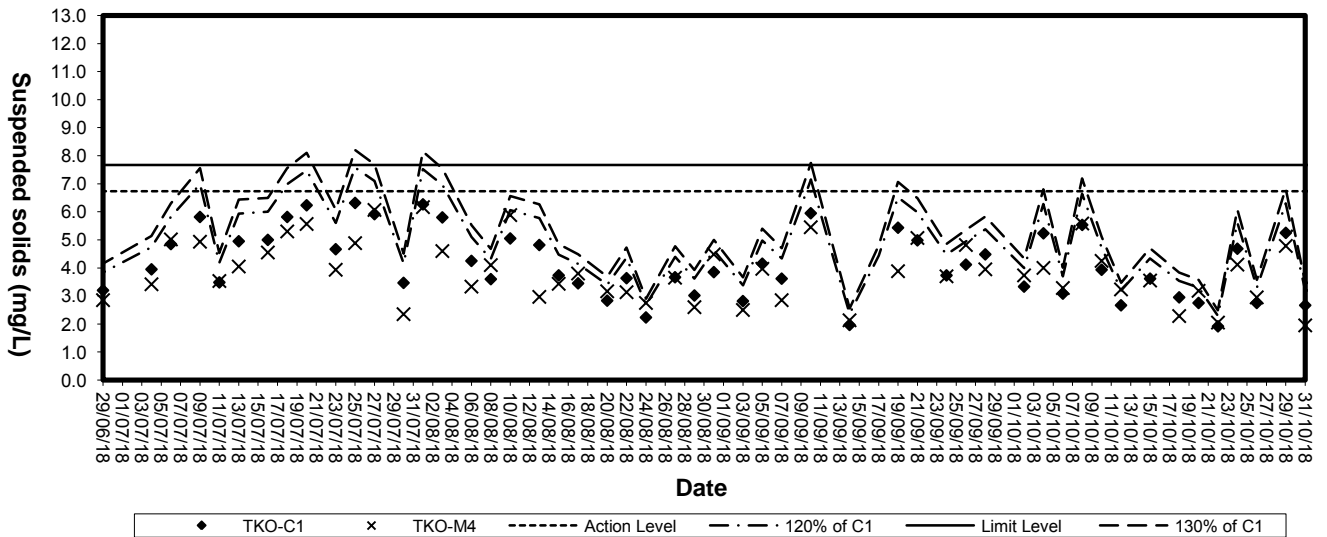
Turbidity (Depth-average) at Mid-Ebb Tide



Suspended solids (Depth-average) at Mid-Flood Tide



Suspended Solids (Depth-average) at Mid-Ebb Tide

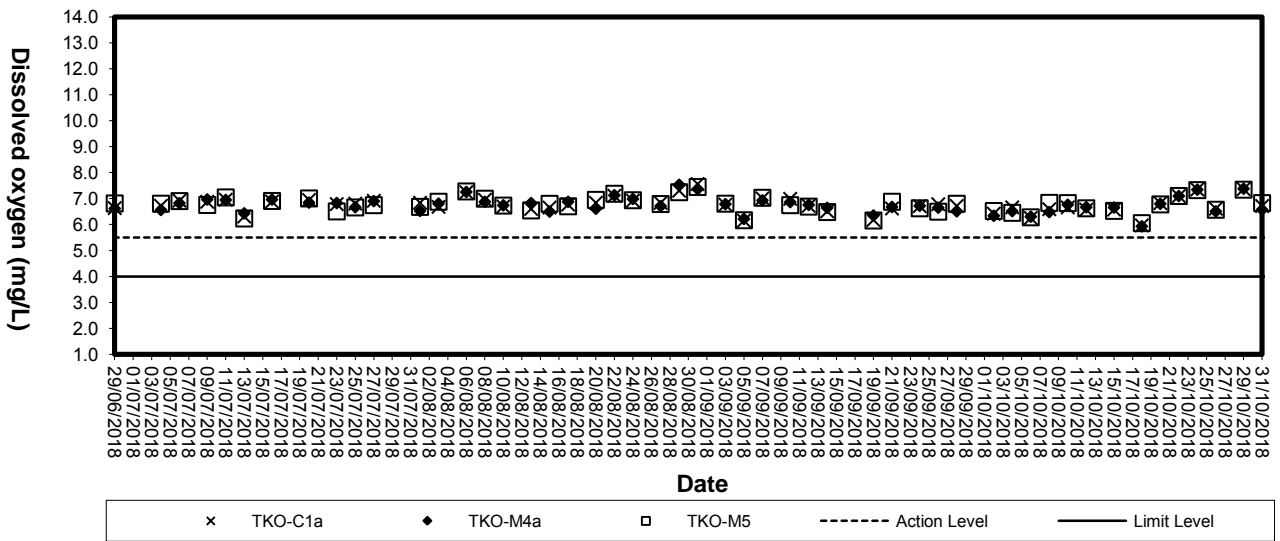


Appendix

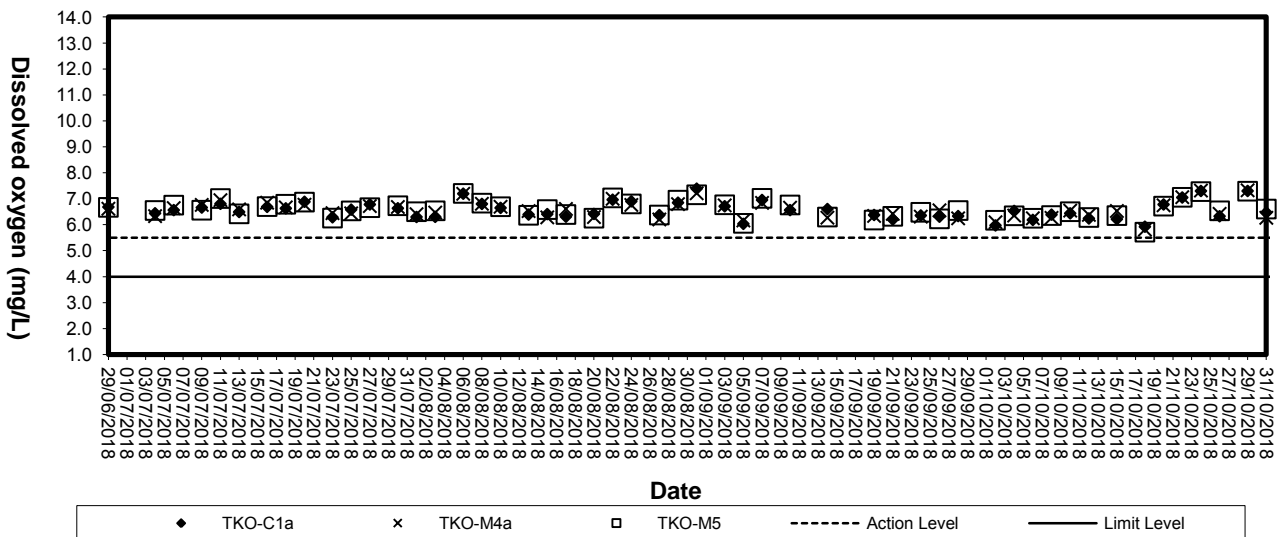
D2

Graphical Plots of Impact Marine Water Quality Monitoring Data (3RS project)

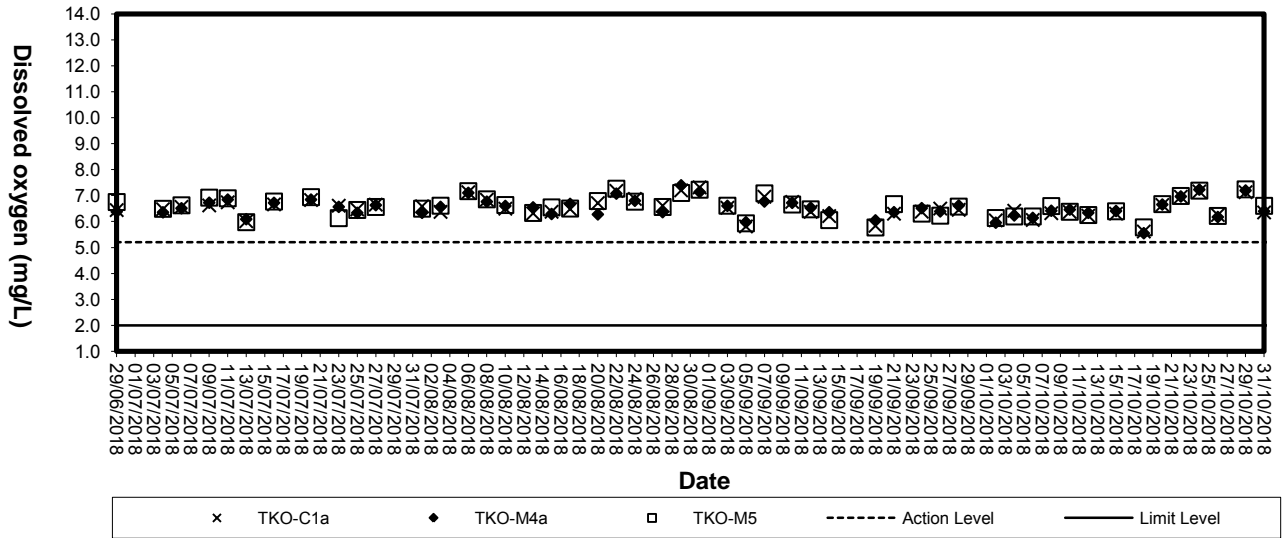
Dissolved Oxygen (Surface & Middle) at Mid-Flood Tide (3RS project)



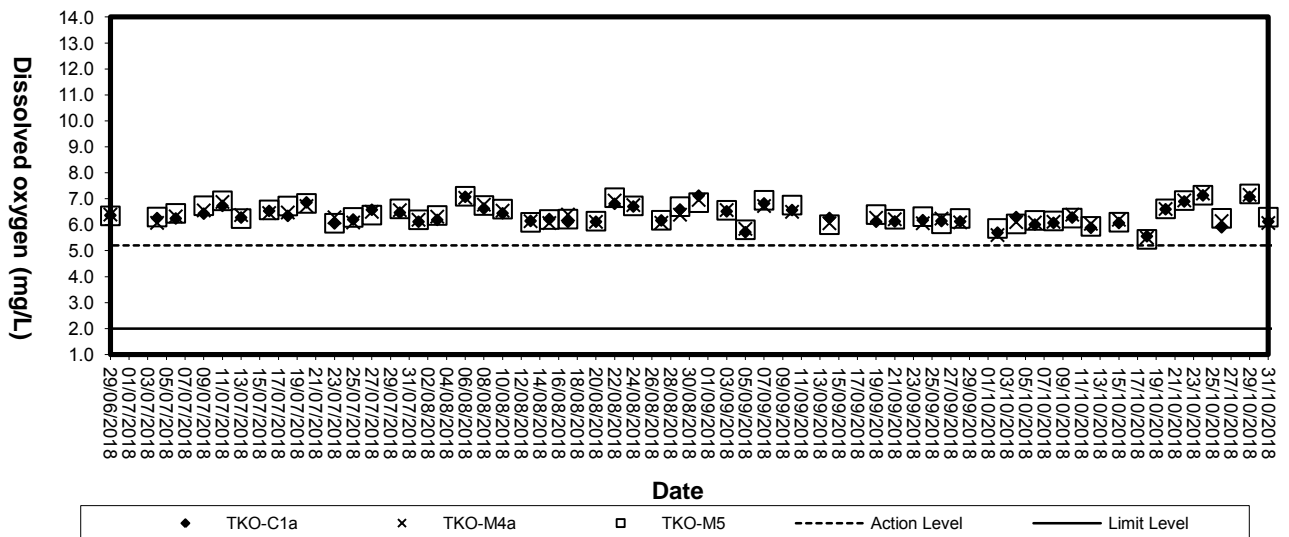
Dissolved Oxygen (Surface & Middle) at Mid-Ebb Tide (3RS project)



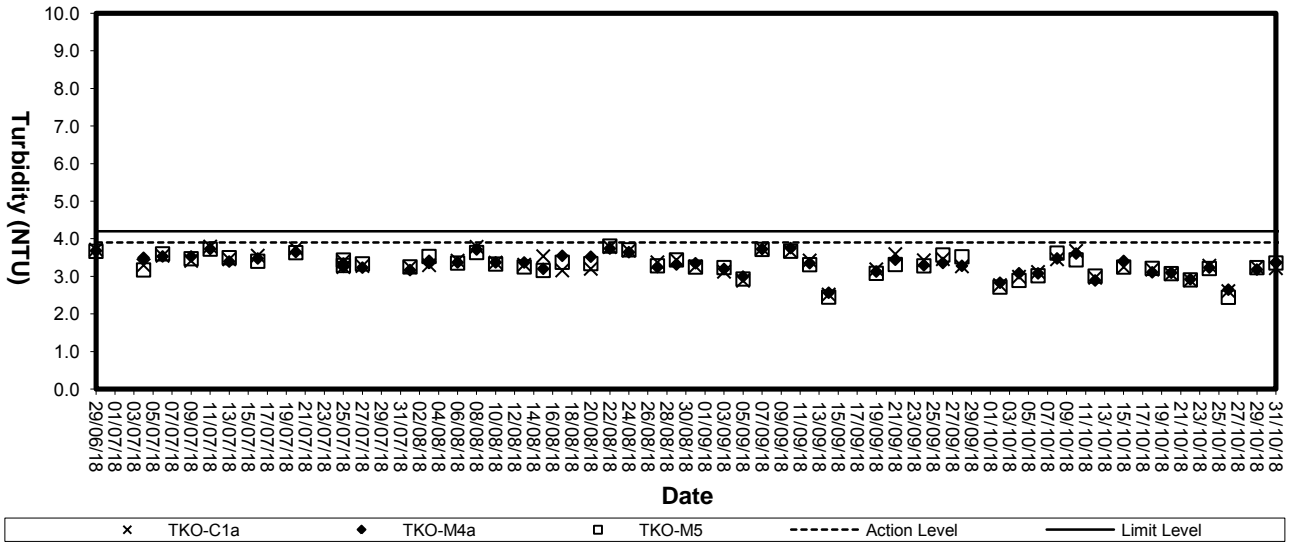
Dissolved Oxygen (Bottom) at Mid-Flood Tide (3RS project)



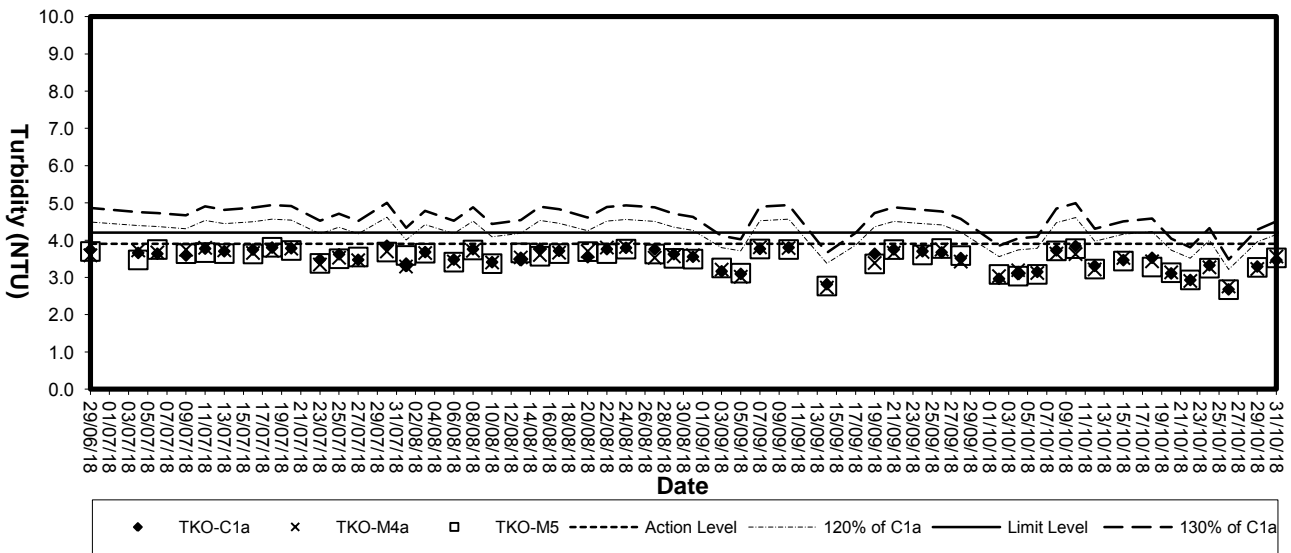
Dissolved Oxygen (Bottom) at Mid-Ebb Tide (3RS project)



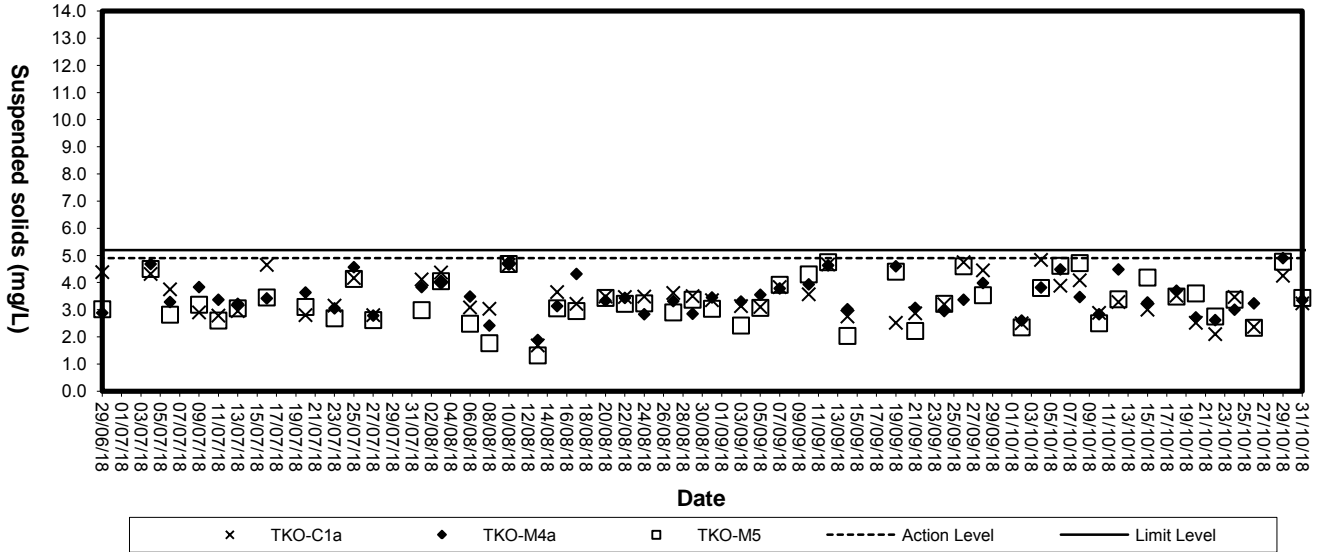
Turbidity (Depth-average) at Mid-Flood Tide (3RS project)



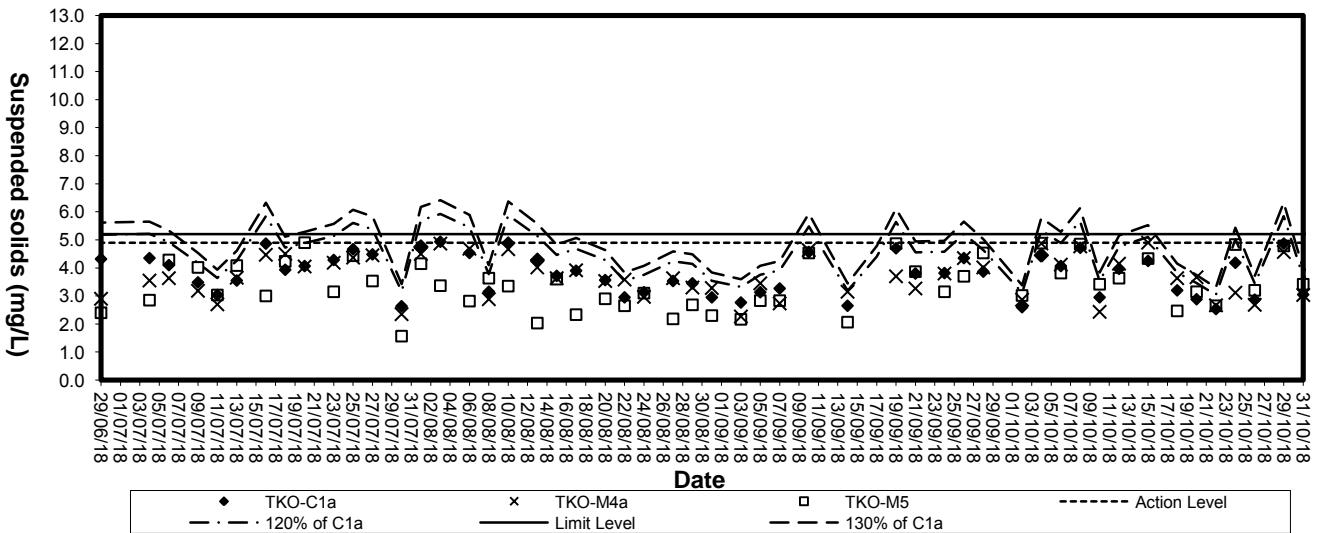
Turbidity (Depth-average) at Mid-Ebb Tide (3RS project)



Suspended solids (Depth-average) at Mid-Flood Tide (3RS project)



Suspended Solids (Depth-average) at Mid-Ebb Tide (3RS project)



Appendix

E

Environmental Quality Performance (Action / Limit Levels)

Action and Limit Levels for Air Quality
Action and Limit Levels for 1-Hour TSP

Location	Action Level, $\mu\text{g}/\text{m}^3$	Limit Level, $\mu\text{g}/\text{m}^3$
A1	376	500
A2		

Action and Limit Levels for 24-Hour TSP

Location	Action Level, $\mu\text{g}/\text{m}^3$	Limit Level, $\mu\text{g}/\text{m}^3$
A1	210	260
A2		

Action and Limit Levels for Noise

Time Period	Action	Limit
0900-2100 hrs on all days	When one documented complaint is received	75*dB(A)

Action and Limit Levels for Water Quality

Parameters	Action	Limit
Dissolved oxygen, DO mg/L (Surface, Middle & Bottom)	<u>Surface & Middle</u> DO < 5.45 (5%-ile of baseline data) <u>Bottom</u> DO < 4.72 (5%-ile of baseline data)	<u>Surface & Middle</u> DO < 5.10 (1%-ile of baseline data) <u>Bottom</u> 2 mg/L
Suspended solids, SS mg/L (Depth-averaged)	SS > 6.74 (95%-ile of baseline data or SS > 120% of upstream control stations SS at the same tide of the same day)	SS > 7.67 (99%-ile of baseline data or SS > 130% of upstream control stations SS at the same tide of the same day)
Turbidity, Tby NTU (Depth-averaged)	Tby > 4.28 (95%-ile of baseline data or Tby > 120% of upstream control stations Tby at the same tide of the same day)	Tby > 4.58 (99%-ile of baseline data or Tby > 130% of upstream control stations Tby at the same tide of the same day)

Action and Limit Levels for Water Quality (3RS project) [↙]

Parameter [↙]	Action Level [↙]	Limit Level [↙]
DO (mg/L) [↙]	<u>Surface & Middle</u> [↙] <5.5 mg/L [↙] <u>Bottom</u> [↙] <5.2 mg/L [↙]	<u>Surface & Middle</u> [↙] <4.00 mg/L (1%-ile of baseline data) [↙] <u>Bottom</u> [↙] <2.00 mg/L [↙]
SS (mg/L) [↙] (Depth-averaged) [↙]	>4.9 mg/L or >120% of the upstream control station's SS at the same tide on the same day [↙]	>5.2 mg/L or >130% of the upstream control station's SS at the same tide on the same day [↙]
Turbidity (NTU) (Depth-averaged) [↙]	>3.9NTU or >120% of the upstream control station's turbidity at the same tide on the same day [↙]	>4.2 NTU or >130% of the upstream control station's turbidity at the same tide on the same day [↙]

Appendix

F

Event-Action Plans

EVENT/ACTION PLAN FOR AIR QUALITY EXCEEDANCE				
EVENT	ACTION			
	ET Leader	IC(E)	ER	Contractor
1. Exceedance for one sample 2. Exceedance for two or more consecutive samples	ACTION LEVEL			
	1. Identify source, investigate the causes of exceedance and propose remedial measures 2. Inform ER, IC(E) and Contractor 3. Repeat measurement to confirm finding 4. Increase monitoring frequency to daily	1. Check monitoring data submitted by the ET 2. Check contractor's working method	1. Notify Contractor	1. Rectify any unacceptable practise 2. Amend working methods if appropriate
1. Exceedance for one sample	LIMIT LEVEL			
	1. Identify source, investigate the causes of exceedance and propose remedial measures 2. Inform ER, Contractor and EPD 3. Repeat measurement to confirm finding 4. Increase monitoring frequency to daily 5. Assess the effectiveness of Contractor's remedial actions and keep IC(E), EPD and ER informed of the results	1. Check monitoring data submitted by the ET Leader 2. Check Contractor's working method 3. Discuss with ET and Contractor on possible remedial measures 4. Advise the ER on the effectiveness of the proposed remedial measures 5. Supervise implementation of remedial measures	1. Confirm receipt of notification of failure in writing 2. Notify the Contractor 3. Ensure remedial measures properly implemented	1. Take immediate action to avoid further exceedance 2. Submit proposals for remedial actions to IC(E) within 3 working days of notification 3. Implement the agreed proposals 4. Amend proposal if appropriate

EVENT/ACTION PLAN FOR AIR QUALITY EXCEEDANCE				
EVENT	ACTION			
	ET Leader	IC(E)	ER	Contractor
2. Exceedance for two or more consecutive samples	<ol style="list-style-type: none"> 1. Identify source, investigate the causes of exceedance and propose remedial measures 2. Notify IC(E), ER, EPD and Contractor 3. Repeat measurement to confirm finding 4. Increase monitoring frequency to daily 5. Carry out analysis of contractor's working procedures to determine possible mitigation to be implemented 6. Arrange meeting with IC(E) and ER to discuss the remedial actions to be taken 7. Assess effectiveness of Contractor's remedial actions and keep IC(E), EPD and ER informed of the results 8. If exceedance stops, cease additional monitoring 	<ol style="list-style-type: none"> 1. Discuss amongst ER, ET and Contractor on the potential remedial actions 2. Review Contractor's remedial actions whenever necessary to assure their effectiveness and advise the ER accordingly 3. Supervise the implementation of remedial measures 	<ol style="list-style-type: none"> 1. Confirm receipt of notification of failure in writing 2. Notify Contractor 3. In consultation with the IC(E), agree with the Contractor on the remedial measures to be implemented 4. Ensure remedial measures are properly implemented 5. If exceedances continues, consider what portion of the work is responsible and instruct the Contractor to stop that portion of work until the exceedance is abated 	<ol style="list-style-type: none"> 1. Take immediate action to avoid further exceedances 2. Submit proposals for remedial actions to IC(E) within 3 working days of notification 3. Implement the agreed proposals 4. Resubmit proposals if problem still not under control 5. Stop the relevant activity of works as determined by the ER until the exceedance is abated

EVENT/ACTION PLAN FOR NOISE EXCEEDANCE				
EVENT	ACTION			
	ET Leader	IC(E)	ER	Contractor
Action Level	<ol style="list-style-type: none"> 1. Notify the IC(E) and the Contractor. 2. Carry out investigation. 3. Report the results of investigation to the IC(E) and the Contractor. 4. Discuss with the Contractor and formulate remedial measures. 5. Increase monitoring frequency to check mitigation effectiveness 	<ol style="list-style-type: none"> 1. Review the analyzed results submitted by the ET. 2. Review the proposed remedial measures by the Contractor and advise the ER accordingly. 3. Supervise the implementation of remedial measures. 	<ol style="list-style-type: none"> 1. Confirm receipt of notification of failure in writing. 2. Notify the Contractor. 3. Require the Contractor to propose remedial measures for the analysed noise problem. 4. Ensure remedial measures are properly implemented. 	<ol style="list-style-type: none"> 1. Submit noise mitigation proposals to IC(E). 2. Implement noise mitigation proposals.
Limit Level	<ol style="list-style-type: none"> 1. Notify the IC(E), the ER, the EPD and the Contractor. 2. Identify source. 3. Repeat measurement to confirm findings. 4. Increase monitoring frequency. 5. Carry out analysis of Contractor's working procedures to determine possible mitigation to be implemented. 6. Inform the IC(E), the ER and the EPD the causes & actions taken for the exceedances. 7. Assess effectiveness of Contractor's remedial actions and keep the IC(E), the EPD and the ER informed of the results 8. If exceedance due to the construction works stops, cease additional monitoring 	<ol style="list-style-type: none"> 1. Discuss amongst the ER, the ET Leader and the Contractor on the potential remedial actions. 2. Review the Contractor's remedial actions whenever necessary to assure their effectiveness and advise the ER accordingly. 3. Supervise the implementation of remedial measures. 	<ol style="list-style-type: none"> 1. Confirm receipt of notification of failure in writing. 2. Notify the Contractor. 3. Require the Contractor to propose remedial measures for the analysed noise problem. 4. Ensure remedial measures are properly implemented. 5. If exceedances continue, consider what activity of the work is responsible and instruct the Contractor to stop that activity of work until the exceedances is abated. 	<ol style="list-style-type: none"> 1. Take immediate action to avoid further exceedance 2. Submit proposals for remedial actions to IC(E) within 3 working days of notification. 3. Implement the agreed proposals. 4. Resubmit proposals if problem still not under control. 5. Stop the relevant activity of works as determined by the ER until the exceedances is abated.

EVENT AND ACTION PLAN FOR WATER QUALITY EXCEEDANCE					
Event	ACTION				
	ET Leader Contractor ER IEC				
Action level being exceeded by one sampling day	<table border="1" style="width: 100%; border-collapse: collapse;"> <tr> <td style="width: 25%; vertical-align: top;"> <ol style="list-style-type: none"> 1. Identify source(s) of impact; 2. Repeat in-situ measurement to confirm findings; 3. Notify Contractor in writing within 24 hours of identification of the exceedance 4. Check monitoring data, all plant, equipment and Contractor's working methods; 5. Carry out investigation 6. Report the results of investigation to the Contractor within 3 working days of identification of exceedance and advise contractor if exceedance is due to contractor's construction works 7. Discuss mitigation measures with Contractor if exceedance is due to the construction works within 4 working days 8. Repeat measurement on next day of exceedance if exceedance is due to the construction works </td> <td style="width: 25%; vertical-align: top;"> <ol style="list-style-type: none"> 1. Notify the ER and IEC in writing within 24 hours of identification of exceedance 2. Rectify unacceptable practices; 3. Check all plant and equipment; 4. Submit investigation report to IEC and ER within 3 working days of the identification of an exceedance 5. Consider changes of working method if exceedance is due to the construction works 6. Discuss with ET, IEC and ER and propose mitigation measures to IEC and ER if exceedance is due to the construction works within 4 working days of identification of an exceedance 7. Implement the agreed mitigation measures within reasonable time scale </td> <td style="width: 25%; vertical-align: top;"> <ol style="list-style-type: none"> 1. Notify EPD and other relevant governmental agencies in writing within 24 hours of the identification of the exceedance 2. Discuss with IEC, ET and Contractor on the proposed mitigation measures; 3. Require contractor to propose remedial measures for the analysed problem if related to the construction works 4. Ensure remedial measures are properly implemented 5. Assess the effectiveness of the mitigation measure </td> <td style="width: 25%; vertical-align: top;"> <ol style="list-style-type: none"> 1. Check monitoring data submitted by ET 2. Confirm ET assessment if exceedance is due / not due to the works 3. Discuss with ET, ER and Contractor on the mitigation measures 4. Review contractor's mitigation measures whenever necessary to ensure their effectiveness and advise the ER accordingly 5. Supervise the implementation of mitigation measures </td> </tr> </table>	<ol style="list-style-type: none"> 1. Identify source(s) of impact; 2. Repeat in-situ measurement to confirm findings; 3. Notify Contractor in writing within 24 hours of identification of the exceedance 4. Check monitoring data, all plant, equipment and Contractor's working methods; 5. Carry out investigation 6. Report the results of investigation to the Contractor within 3 working days of identification of exceedance and advise contractor if exceedance is due to contractor's construction works 7. Discuss mitigation measures with Contractor if exceedance is due to the construction works within 4 working days 8. Repeat measurement on next day of exceedance if exceedance is due to the construction works 	<ol style="list-style-type: none"> 1. Notify the ER and IEC in writing within 24 hours of identification of exceedance 2. Rectify unacceptable practices; 3. Check all plant and equipment; 4. Submit investigation report to IEC and ER within 3 working days of the identification of an exceedance 5. Consider changes of working method if exceedance is due to the construction works 6. Discuss with ET, IEC and ER and propose mitigation measures to IEC and ER if exceedance is due to the construction works within 4 working days of identification of an exceedance 7. Implement the agreed mitigation measures within reasonable time scale 	<ol style="list-style-type: none"> 1. Notify EPD and other relevant governmental agencies in writing within 24 hours of the identification of the exceedance 2. Discuss with IEC, ET and Contractor on the proposed mitigation measures; 3. Require contractor to propose remedial measures for the analysed problem if related to the construction works 4. Ensure remedial measures are properly implemented 5. Assess the effectiveness of the mitigation measure 	<ol style="list-style-type: none"> 1. Check monitoring data submitted by ET 2. Confirm ET assessment if exceedance is due / not due to the works 3. Discuss with ET, ER and Contractor on the mitigation measures 4. Review contractor's mitigation measures whenever necessary to ensure their effectiveness and advise the ER accordingly 5. Supervise the implementation of mitigation measures
<ol style="list-style-type: none"> 1. Identify source(s) of impact; 2. Repeat in-situ measurement to confirm findings; 3. Notify Contractor in writing within 24 hours of identification of the exceedance 4. Check monitoring data, all plant, equipment and Contractor's working methods; 5. Carry out investigation 6. Report the results of investigation to the Contractor within 3 working days of identification of exceedance and advise contractor if exceedance is due to contractor's construction works 7. Discuss mitigation measures with Contractor if exceedance is due to the construction works within 4 working days 8. Repeat measurement on next day of exceedance if exceedance is due to the construction works 	<ol style="list-style-type: none"> 1. Notify the ER and IEC in writing within 24 hours of identification of exceedance 2. Rectify unacceptable practices; 3. Check all plant and equipment; 4. Submit investigation report to IEC and ER within 3 working days of the identification of an exceedance 5. Consider changes of working method if exceedance is due to the construction works 6. Discuss with ET, IEC and ER and propose mitigation measures to IEC and ER if exceedance is due to the construction works within 4 working days of identification of an exceedance 7. Implement the agreed mitigation measures within reasonable time scale 	<ol style="list-style-type: none"> 1. Notify EPD and other relevant governmental agencies in writing within 24 hours of the identification of the exceedance 2. Discuss with IEC, ET and Contractor on the proposed mitigation measures; 3. Require contractor to propose remedial measures for the analysed problem if related to the construction works 4. Ensure remedial measures are properly implemented 5. Assess the effectiveness of the mitigation measure 	<ol style="list-style-type: none"> 1. Check monitoring data submitted by ET 2. Confirm ET assessment if exceedance is due / not due to the works 3. Discuss with ET, ER and Contractor on the mitigation measures 4. Review contractor's mitigation measures whenever necessary to ensure their effectiveness and advise the ER accordingly 5. Supervise the implementation of mitigation measures 		

EVENT AND ACTION PLAN FOR WATER QUALITY				
Event	ACTION			
	ET Leader	Contractor	ER	
Action level being exceeded by more than one consecutive sampling days	<ol style="list-style-type: none"> Identify source(s) of impact; Repeat in-situ measurement to confirm findings Notify Contractor in writing within 24 hours of identification Check monitoring data, all plant, equipment and Contractor's working methods; Carry out investigation Report the results of investigation to the Contractor within 3 working days of identification of exceedance and advise contractor if exceedance is due to contractor's construction works Discuss mitigation measures with IEC and Contractor within 4 working of identification of an exceedance Ensure mitigation measures are implemented; Prepare to increase the monitoring frequency to daily; Repeat measurement on next day of exceedance. 	<ol style="list-style-type: none"> Notify IEC and ER in writing within 24 hours of identification of exceedance Rectify unacceptable practice; Check all plant and equipment; Consider changes of working methods; Submit the results of the investigation to IEC and ER within 3 working days of the identification of an exceedance Discuss with ET, IEC and ER and propose mitigation measures to IEC and ER within 4 working days of identification of an exceedance Implement the agreed mitigation measures within reasonable time scale 	<ol style="list-style-type: none"> Notify EPD and other relevant governmental agencies in writing within 24 hours of the identification of the exceedance Discuss with IEC, ET and Contractor on the proposed mitigation measures; Require contractor to propose remedial measures for the analysed problem if related to the construction works Ensure remedial measures are properly implemented Assess the effectiveness of the mitigation measure 	<ol style="list-style-type: none"> Check monitoring data submitted by ET Confirm ET assessment if exceedance is due / not due to the works Discuss with ET, ER and Contractor on the mitigation measures. Review contractor's mitigation measures whenever necessary to ensure their effectiveness and advise the ER accordingly Assess the effectiveness of the implemented mitigation measures.

Event	EVENT AND ACTION PLAN FOR WATER QUALITY EXCEEDANCE			
	ET Leader	Contractor	ER	IEC
Limit level being exceeded by one sampling day	<ol style="list-style-type: none"> 1. Repeat in-situ measurement to confirm findings; 2. Identify source(s) of impact; 3. Notify Contractor in writing within 24 hours of identification of the exceedance 4. Check monitoring data, all plant, equipment and Contractor's working methods; 5. Carry out investigation 6. Report the results of investigation to the Contractor within 3 working days of identification of exceedance and advise contractor if exceedance is due to contractor's construction works 7. Discuss mitigation measures with IEC, ER and Contractor within 4 working of identification of an exceedance 8. Ensure mitigation measures are implemented; 9. Increase the monitoring frequency to daily until no exceedance of Limit Level. 	<ol style="list-style-type: none"> 1. Notify IEC and ER in writing; within 24 hours of the identification of the exceedance 2. Rectify unacceptable practice; 3. Check all plant and equipment; 4. Consider changes of working methods; 5. Submit the results of the investigation to IEC and ER within 3 working days of the identification of an exceedance 6. Discuss with ET, IEC and ER and propose mitigation within 4 working days of the identification of an exceedance 7. Implement the agreed mitigation measures within reasonable time scale 	<ol style="list-style-type: none"> 1. Notify EPD and other relevant governmental agencies in writing within 24 hours of identification of exceedance 2. Discuss with IEC, ET and Contractor on the proposed mitigation measures; 3. Request Contractor to critically review the working methods; 4. Ensure remedial measures are properly implemented 5. Assess the effectiveness of the implemented mitigation measures. 	<ol style="list-style-type: none"> 1. Check monitoring data submitted by ET 2. Confirm ET assessment if exceedance is due / not due to the works 3. Discuss with ET, ER and Contractor on the mitigation measures. 4. Review proposals on mitigation measures submitted by Contractor and advise the ER accordingly. 5. Assess the effectiveness of the implemented mitigation measures

EVENT AND ACTION PLAN FOR WATER QUALITY EXCEEDANCE				
Event	ACTION			
	ET Leader	Contractor	ER	
Limit Level being exceeded by more than one consecutive sampling days	<ol style="list-style-type: none"> 1. Repeat in-situ measurement to confirm findings; 2. Identify source(s) of impact; 3. Notify Contractor in writing within 24 hours of identification of the exceedance 4. Check monitoring data, all plant, equipment and Contractor's working methods; 5. Carry out investigation 6. Report the results of investigation to the Contractor within 3 working days of identification of exceedance and advise contractor if exceedance is due to contractor's construction works 7. Discuss mitigation measures with IEC, ER and Contractor; 8. Ensure mitigation measures are implemented; 9. Increase the monitoring frequency to daily until no exceedance of Limit Level for two consecutive days. 	<ol style="list-style-type: none"> 1. Notify ER and IEC in writing within 24 hours of the identification of the exceedance and Rectify unacceptable practice; 2. Check all plant and equipment; 3. Consider changes of working methods; 4. Submit the results of the investigation to IEC and ER within 3 working days of the identification of an exceedance 5. Discuss with ET, IEC and ER and propose mitigation measures to IEC and ER within 4 working days; 6. Implement the agreed mitigation measures within reasonable time scale 7. As directed by the Engineer, to slow down or to stop all or part of the marine work or construction activities. 	<ol style="list-style-type: none"> 1. Notify EPD and other relevant governmental agencies in writing within 24 hours of identification of exceedance 2. Discuss with IEC, ET and Contractor on the proposed mitigation measures; 3. Request Contractor to critically review the working methods; 4. Ensure remedial measures are properly implemented 5. Assess the effectiveness of the implemented mitigation measures; 6. Consider and instruct, if necessary, the Contractor to slow down or to stop all or part of the marine work until no exceedance of Limit Level. 	<ol style="list-style-type: none"> 1. Check monitoring data submitted by ET 2. Confirm ET assessment if exceedance is due / not due to the works 3. Discuss with ER, ET and Contractor on the mitigation measures. 4. Review proposals on mitigation measures submitted by Contractor and advise the ER accordingly. 5. Assess the effectiveness of the implemented mitigation measures.

Appendix

G

Work Programme

Three Months Rolling Programme (1-September-2018 to 30-November-2018)

Item	Description	From	To	Sep-18																														Oct-18																														Nov-18																													
				1	2	3	4	5	6	7	8	9	10	11	12	13	14	15	16	17	18	19	20	21	22	23	24	25	26	27	28	29	30	1	2	3	4	5	6	7	8	9	10	11	12	13	14	15	16	17	18	19	20	21	22	23	24	25	26	27	28	29	30	1	2	3	4	5	6	7	8	9	10	11	12	13	14	15	16	17	18	19	20	21	22	23	24	25	26	27	28	29	30
1	Section 1	1-Sep-18	30-Nov-18	[Blue bar]																																																																																									
1.1	Take over existing site facilities	11-May-17	11-May-17	[White bar]																																																																																									
1.2	Operation of Fill Bank, surveillance system and tipping halls	1-Sep-18	30-Nov-18	[Green bar]																																																																																									
1.3	Design, provision and operation of crushing plant	1-Sep-18	30-Nov-18	[Green bar]																																																																																									
1.4	Operation of the existing and expanded dewatering plant	1-Sep-18	30-Nov-18	[Green bar]																																																																																									
1.5	Collection and delivery of Public Fill from CWPFBP and MWPFRRF to TKOFB	1-Sep-18	30-Nov-18	[Green bar]																																																																																									
1.6	Breaking up the incoming precast concrete units	1-Sep-18	30-Nov-18	[Green bar]																																																																																									
1.7	Construction of concrete pavement to Temporary Construction Waste Sorting Facility	1-Sep-18	15-Sep-18	[Green bar]																																																																																									
1.8	Construction of concrete pavement for the Expanded Dewatering Plant	1-Sep-18	15-Oct-18	[Green bar]																																																																																									
2	Section 2	1-Sep-18	30-Nov-18	[Blue bar]																																																																																									
2.1	Take over existing site facilities	11-May-17	11-May-17	[White bar]																																																																																									
2.2	Operation of Fill Bank, surveillance system and tipping halls	1-Sep-18	30-Nov-18	[Green bar]																																																																																									
2.3	Design and construction of 750mm U-channel and catchpits	1-Sep-18	30-Nov-18	[Green bar]																																																																																									
2.4	Breaking up the incoming precast concrete units	1-Sep-18	30-Nov-18	[Green bar]																																																																																									
2.5	Operation of glass cullet storage compartment at Portion B7	1-Sep-18	30-Nov-18	[Green bar]																																																																																									
3	Section 3	1-Sep-18	30-Nov-18	[Blue bar]																																																																																									
3.1	Design and construction of of seawalls at Zone B (approx. 900m)	1-Sep-18	30-Nov-18	[Green bar]																																																																																									
3.2	Design and construction of of seawalls at Zone C (approx. 2000m)	1-Sep-18	30-Nov-18	[Green bar]																																																																																									
4	Section 3A	1-Sep-18	30-Nov-18	[Blue bar]																																																																																									
4.1	Design, construction and operation of new berthing facilities at Zone B	1-Sep-18	30-Nov-18	[Green bar]																																																																																									
4.2	Design, construction and operation of new navigation chaneel and turning basin inassociated with the berthing facilities at Zone B	1-Sep-18	30-Nov-18	[Green bar]																																																																																									
4.3	Design and construction of seawalls at Zone B (approx. 1500m)	1-Sep-18	30-Nov-18	[Green bar]																																																																																									
5	Section 4	1-Sep-18	30-Nov-18	[Blue bar]																																																																																									
5.1	Collection and delivery of Public Fill to the Designated Reclamation Sites in the Mainland	1-Sep-18	30-Nov-18	[Green bar]																																																																																									
6	Section 5	1-Sep-18	10-Sep-18	[Blue bar]																																																																																									
6.1	Removal of existing stockpiled Public Fill at Portion A6 down to +6.0mPD	1-Sep-18	10-Sep-18	[Green bar]																																																																																									
7	Section 7	1-Sep-18	30-Nov-18	[Blue bar]																																																																																									
7.1	Removal of existing stockpiled Public Fill at Portion A6 down to +5.2mPD and +6.0mPD	1-Sep-18	30-Nov-18	[Green bar]																																																																																									

Appendix

H

Implementation Schedule of Environmental Mitigation Measures (EMIS)

Environmental Mitigation Implementation Schedule

Environmental Protection Measures	Location	Implementation Status			
		Implemented	Partially implemented	Not implemented	Not Applicable
Air Quality					
• Dust control / mitigation measures shall be provided to prevent dust nuisance.	All areas	√			
• A buffer zone of at least 100m shall be maintained between the edge of the stockpiling area and the nearest ASRs at the TKO Industrial Estate. Within the buffer zone, no dusty material shall be stockpiled and no loading / unloading and similar activities should be allowed.	Northern Site Boundary	√			
• Water sprays shall be provided and used to dampen materials.	All areas	√			
• Regular cleaning and watering the site shall be provided to minimize the fugitive dust emissions.	All areas	√			
• All vehicles shall be restricted to a maximum speed of 10 km per hour.	All areas	√			
• Any vehicle with open load carrying area used for moving materials which has the potential to create dust shall have properly fitting side and tail boards. Material having the potential to create dust shall not be loaded to a level higher than the side and tail boards, and shall be covered by a clean tarpaulin.	Site Egress	√			
• The designated site main haul route shall be paved or regular watering.	All haul roads	√			
• Frequent watering of work site shall be at least three times per day.	All areas	√			
• Wheel washing facilities including high pressure water jet shall be provided at the entrance of work site.	Site Egress	√			
• Every vehicle shall be washed to remove any dusty materials from its body and wheels before leaving the fill bank.	Site Egress	√			
• The temporary slope surfaces, especially those facing to the north of the site shall be covered with impermeable sheet or sprayed with water or protected by other method approved by CEDD.	All areas	√			
• Final slope surfaces, especially those facing to the north of the site shall be treated by compaction, followed by hydroseeding, vegetation planting or sealing with shotcrete, latex, vinyl, bitumen, or other suitable surface stabilizer approved by CEDD.	All areas	√			
• When fill material is transferred by belt conveyor systems, the conveyors shall be enclosed on top and 2 sides.	C&DMSF	√			
• The belt scraper shall be equipped with bottom plates or other similar means to prevent falling of material from the return belt.	C&DMFS	√			
• The level of stockpiling belt conveyor shall be adjustable such that the vertical distance between the belt conveyor and the material landing point is maintained at no more than 1m.	C&DMFS	√			
• All plant and equipment should be well maintained e.g. without black smoke emission.		√			
Noise Impact					
• Approved method of working, equipment and sound-reducing measures (e.g. use of silenced type of equipment, etc.) shall be adapted.	All areas	√			
• Only well maintained plant should be operated on-site and plant should be serviced regularly during the construction works.	All areas	√			
• Powered mechanical equipment (PME) should be covered or shielded by appropriate acoustic materials.	All areas	√			
• Air compressors and hand held breakers should have noise labels.	All areas	√			
• Machines and plants that may be in intermittent use should be shut down between work periods or should be throttled down to a minimum.	All areas	√			
• Noisy equipment and mobile plant shall always be site away from NSRs.	All areas	√			

Environmental Protection Measures	Location	Implementation Status			
		Implemented	Partially implemented	Not implemented	Not Applicable
Water Quality					
▪ Drainage system should be adequate and well maintained to prevent flooding and overflow, especially after rain storms.	All areas		√		
▪ The permanent drainage channels should have sediment basin, traps and baffles and maintain properly.	All areas	√			
▪ Temporary intercepting drains should be used at the stockpiling area to divert polluted stormwater to the intercepting channels. Earth bunds and sand bay barriers shall be used to assist the diversion of polluted stormwater to the intercepting channels.	All areas	√			
▪ Manholes should be covered and sealed.	All areas	√			
▪ Unnecessary water retained in receptacles and standing water should be avoided to prevent mosquito breeding.	All areas	√			
▪ A buffer distance of at least 100m shall be maintained between the boundary of the public fill stockpiling area and the sea front.	Public fill stockpiling area	√			
▪ A buffer distance of at least 20m shall be maintained between the boundary of the C&DMFS and the seafront.	C&DMFS	√			
▪ The stormwater intercepting system shall be effective to collect runoff and remove suspended solids before discharge.	All areas	√			
▪ The temporary slope surfaces, especially those facing to the north of the site shall be covered with impermeable sheet or sprayed with water or protected by other method approved by CEDD.	Temporary Slopes	√			
▪ Final slope surfaces, especially those facing to the north of the site shall be treated by compaction, followed by hydroseeding, vegetation planting or sealing with shotcrete, latex, vinyl, bitumen, or other suitable surface stabilizer approved by CEDD.	Temporary Slopes	√			
▪ Existing and newly constructed Catchpits, sand and silt removal facilities and intercepting channels shall be maintained, and the deposited silt and grit shall be removed weekly and on a need basis especially at the onset of and after each rainstorm to ensure that these facilities are functioning properly at all times.	All areas	√			
▪ A wheel washing bay shall be provided at the site exit and wash-water shall have sand and silt settled out or removed before being discharged into storm drains.	Wheel Washing facility	√			
▪ The section of construction road between wheel washing bay and the public road shall be paved with concrete, bituminous materials or hardcores to reduce vehicle tracking of soil and to prevent site run-off from entering public road drains.	Wheel Washing facility	√			
▪ Sewage from toilets shall be discharged in to a foul sewer, or chemical toilets shall be provided. The chemical toilets (if use) shall be provided by a licensed contractor, who will be responsible for disposal and maintenance of these facilities.	All areas	√			
▪ Oil intercept in addition of sand / silt removal facilities shall be provided at the car parking areas and work shop.	All areas	√			
▪ Tipping halls enclosed with top and 3-side to prevent spillage of material into marine water.	Barge Handling Area (BHA)	√			
▪ The barges shall be in right size such that adequate clearance is maintained between the vessels and the seabed at all states of the tide to ensure the undue turbidity is not generated by turbulence from vessel movement or propeller wash.	Barge Handling Area (BHA)	√			
▪ All vessels used for transportation of fill material shall have tight fitting seals to their bottom openings to prevent leakage of material during transport.	Barge Handling Area (BHA)	√			
▪ Adequate environmental control measures shall be provided to prevent / avoid dropping of fill material into the sea during the transfer.	Along the seafront	√			
▪ Barges shall not be filled to a level which may cause the overflow of material during loading or transportation. Barge effluents shall be properly collected and treated before disposal.	Barge Handling Area (BHA)	√			
▪ The work activities shall not cause any visible foam, oil, grease, scum, litter or other objectionable matters to be present on the water in the vicinity of the barging facilities.	Along the seafront	√			

<ul style="list-style-type: none"> Existing silt curtain at the outward side of the basin near the Barging Handling Area throughout the period shall be repair, maintain and service when there is public fill intake by barges to the Fill Bank in accordance with PS Clause 1.68. The total length of the silt curtains shall not be less than 160m, and a gap of about 80m shall be left open for access of barges. The silt curtain shall be properly maintained such that it can also serve the function of refuse containment boom to confine floating refuse. 	Along the seafront		√		
<ul style="list-style-type: none"> A waste collection vessel shall be deployed to remove floating debris. 	Along the seafront	√			

Environmental Protection Measures	Location	Implementation Status			
		Implemented	Partially implemented	Not implemented	Not Applicable
<i>Landscape and Visual</i>					
<ul style="list-style-type: none"> Construction of lighting to avoid spillage and glare 	All areas	√			
<ul style="list-style-type: none"> Hydroseeding 	Completed slopes	√			
<ul style="list-style-type: none"> Hoarding erection 	Site boundary	√			
<ul style="list-style-type: none"> Damage to surrounding area avoided 	All areas	√			
<i>Other Environmental Factors</i>					
<ul style="list-style-type: none"> C&D waste sorted from mixed C&D material shall be transfer to SENT landfill for disposal. 	All areas	√			
<ul style="list-style-type: none"> Plan and stock construction materials carefully to minimise generation of waste. 	All areas	√			
<ul style="list-style-type: none"> Any unused materials or those with remaining functional capacity should be recycled. 	All areas	√			
<ul style="list-style-type: none"> All generators, fuel and oil storage are within bunded areas. 	All areas	√			
<ul style="list-style-type: none"> Oil leakage from machinery, vehicle and plant is prevented. 	All areas	√			
<ul style="list-style-type: none"> Bund chemical storage area to 110% capacity. 	All areas	√			
<ul style="list-style-type: none"> Prevent disposal of hazardous materials to air, soil and water body 	All areas	√			
<ul style="list-style-type: none"> Provide rubbish skips at all work areas 	All areas	√			
<ul style="list-style-type: none"> Good site practices should be adopted to clean the rubbish and litter on a regular basis so as to prevent the rubbish and litter from dropping into the nearby environment. 	All areas	√			
<ul style="list-style-type: none"> To encourage collection of aluminium cans by individual collectors, separate labelled bins should be provided to segregate this waste from other general refuse generated by the workforce. 	All areas	√			

Appendix

I1

Statistical Analysis of the Trend of Suspended Solids in the Quarter

Statistical Analysis of the Trend of Suspended Solids

For Mid-Flood Tide

Station: M4

t-test

Group Name	N	Missing	Mean	Std Dev	SE
130% Baseline Mean	12	0	6.969	1.069	0.3086
Quarterly Mean	40	0	3.758	1.306	0.2065

Result:

Probability that two variances are equal (f-test) = 0.7574

Difference between means = 3.2110
 (95% CI : 2.4388 < Diff < 3.9832)

t-value of difference = 8.648 (21 degrees of freedom)
 P = 1 (>0.05)

Conclusion:

There is no statistically significant difference between the groups.

Station: C1

t-test

Group Name	N	Missing	Mean	Std Dev	SE
130% Baseline Mean	12	0	6.969	0.950	0.2742
Quarterly Mean	40	0	3.642	1.360	0.2151

Result:

Probability that two variances are equal (f-test) = 0.8995

Difference between means = 3.3266
 (95% CI : 2.6093 < Diff < 4.0447)

t-value of difference = 9.5466 (25 degrees of freedom)
 P = 1 (>0.05)

Conclusion:

There is no statistically significant difference between the groups.

Statistical Analysis of the Trend of Suspended Solids

For Mid-Ebb Tide

Station: M4

t-test

Group Name	N	Missing	Mean	Std Dev	SE
130% Baseline Mean	12	0	6.897	1.449	0.4183
Quarterly Mean	40	0	3.483	1.463	0.2313

Result:

Probability that two variances are equal (f-test) = 0.4794

Difference between means = 3.4140
(95% CI : 2.4066 < Diff < 4.4214)

t-value of difference = 7.1199 (18 degrees of freedom)
P = 1 (>0.05)

Conclusion:

There is no statistically significant difference between the groups.

Station: C1

t-test

Group Name	N	Missing	Mean	Std Dev	SE
130% Baseline Mean	12	0	6.933	1.045	0.3017
Quarterly Mean	40	0	3.645	1.550	0.2451

Result:

Probability that two variances are equal (f-test) = 0.9196

Difference between means = 3.2880
(95% CI : 2.4890 < Diff < 4.0870)

t-value of difference = 8.4590 (26 degrees of freedom)
P = 1 (>0.05)

Conclusion:

There is no statistically significant difference between the groups.

Appendix

I2

Statistical Analysis of the Trend of Suspended Solids in the Quarter (3RS)

Statistical Analysis of the Trend of Suspended Solids

For Mid-Flood Tide

Station: C1a

t-test

Group Name	N	Missing	Mean	Std Dev	SE
130% Baseline Mean	12	0	4.158	1.367	0.3946
Quarterly Mean	40	0	3.311	1.015	0.1605

Result:

Probability that two variances are equal (f-test) = 0.0848

Difference between means = 1.8139

(95% CI : -0.0067 < Diff < 1.7607)

t-value of difference = 1.9883 (14 degrees of freedom)

P = 1 (>0.05)

Conclusion:

There is no statistically significant difference between the groups.

Station: M4a

t-test

Group Name	N	Missing	Mean	Std Dev	SE
130% Baseline Mean	12	0	3.902	1.142	0.3297
Quarterly Mean	40	0	3.366	0.984	0.1556

Result:

Probability that two variances are equal (f-test) = 0.2368

Difference between means = 0.5360

(95% CI : -0.2367 < Diff < 1.3087)

t-value of difference = 1.4705 (16 degrees of freedom)

P = 1 (>0.05)

Conclusion:

There is no statistically significant difference between the groups.

Station: M5

t-test

Group Name	N	Missing	Mean	Std Dev	SE
130% Baseline Mean	12	0	3.936	1.414	0.4082
Quarterly Mean	40	0	3.230	1.112	0.1758

Result:

Probability that two variances are equal (f-test) = 0.1321

Difference between means = 0.7060

(95% CI : -0.2412 < Diff < 1.6532)

t-value of difference = 1.5887 (15 degrees of freedom)

P = 1 (>0.05)

Conclusion:

There is no statistically significant difference between the groups.

Statistical Analysis of the Trend of Suspended Solids

For Mid-Ebb Tide

Station: C1a

t-test

Group Name	N	Missing	Mean	Std Dev	SE
130% Baseline Mean	12	0	4.286	1.353	0.3906
Quarterly Mean	40	0	3.481	1.269	0.2006

Result:

Probability that two variances are equal (f-test) = 0.3608

Difference between means = 0.8050

(95% CI : -0.1214 < Diff < 1.7314)

t-value of difference = 1.8333 (17 degrees of freedom)

P = 1 (>0.05)

Conclusion:

There is no statistically significant difference between the groups.

Station: M4a

t-test

Group Name	N	Missing	Mean	Std Dev	SE
130% Baseline Mean	12	0	4.090	1.325	0.3825
Quarterly Mean	40	0	3.458	1.268	0.2005

Result:

Probability that two variances are equal (f-test) = 0.3927

Difference between means = 0.6320

(95% CI : -0.2792 < Diff < 1.5432)

t-value of difference = 1.4633 (17 degrees of freedom)

P = 1 (>0.05)

Conclusion:

There is no statistically significant difference between the groups.

Station: M5

t-test

Group Name	N	Missing	Mean	Std Dev	SE
130% Baseline Mean	12	0	3.790	1.465	0.4229
Quarterly Mean	40	0	3.153	1.286	0.2033

Result:

Probability that two variances are equal (f-test) = 0.2621

Difference between means = 0.6370

(95% CI : -0.3579 < Diff < 1.6319)

t-value of difference = 1.3573 (16 degrees of freedom)

P = 1 (>0.05)

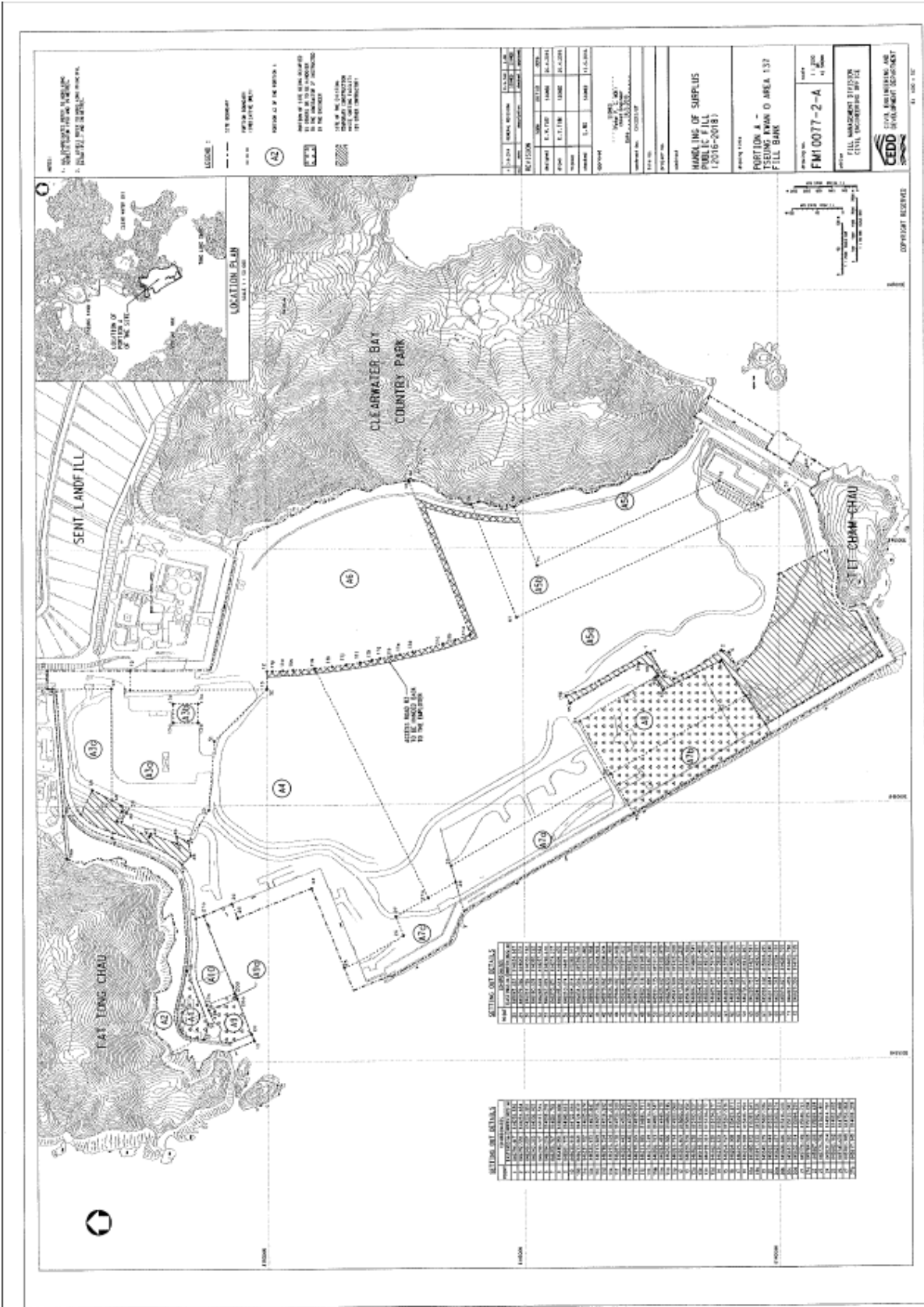
Conclusion:

There is no statistically significant difference between the groups.

Appendix

J

Site General Layout plan



NOTE:
1. SETTLEMENTS ARE TO BE MAINTAINED AS EXISTING UNLESS OTHERWISE SPECIFIED.
2. EXISTING AND PROPOSED BOUNDARIES.

LEGEND:
SITE BOUNDARY
WATER BOUNDARY
EXISTING FILL
PROPOSED FILL
PROPOSED FILL TO BE REMOVED
SITE OF THE FILLING
PROPOSED INFRASTRUCTURE
TO BE MAINTAINED

NO.	MARK	DESCRIPTION	DATE
1	100	100	100
2	101	101	101
3	102	102	102
4	103	103	103
5	104	104	104
6	105	105	105
7	106	106	106
8	107	107	107
9	108	108	108
10	109	109	109
11	110	110	110
12	111	111	111
13	112	112	112
14	113	113	113
15	114	114	114
16	115	115	115
17	116	116	116
18	117	117	117
19	118	118	118
20	119	119	119
21	120	120	120
22	121	121	121
23	122	122	122
24	123	123	123
25	124	124	124
26	125	125	125
27	126	126	126
28	127	127	127
29	128	128	128
30	129	129	129
31	130	130	130
32	131	131	131
33	132	132	132
34	133	133	133
35	134	134	134
36	135	135	135
37	136	136	136
38	137	137	137
39	138	138	138
40	139	139	139
41	140	140	140
42	141	141	141
43	142	142	142
44	143	143	143
45	144	144	144
46	145	145	145
47	146	146	146
48	147	147	147
49	148	148	148
50	149	149	149
51	150	150	150
52	151	151	151
53	152	152	152
54	153	153	153
55	154	154	154
56	155	155	155
57	156	156	156
58	157	157	157
59	158	158	158
60	159	159	159
61	160	160	160
62	161	161	161
63	162	162	162
64	163	163	163
65	164	164	164
66	165	165	165
67	166	166	166
68	167	167	167
69	168	168	168
70	169	169	169
71	170	170	170
72	171	171	171
73	172	172	172
74	173	173	173
75	174	174	174
76	175	175	175
77	176	176	176
78	177	177	177
79	178	178	178
80	179	179	179
81	180	180	180
82	181	181	181
83	182	182	182
84	183	183	183
85	184	184	184
86	185	185	185
87	186	186	186
88	187	187	187
89	188	188	188
90	189	189	189
91	190	190	190
92	191	191	191
93	192	192	192
94	193	193	193
95	194	194	194
96	195	195	195
97	196	196	196
98	197	197	197
99	198	198	198
100	199	199	199
101	200	200	200
102	201	201	201
103	202	202	202
104	203	203	203
105	204	204	204
106	205	205	205
107	206	206	206
108	207	207	207
109	208	208	208
110	209	209	209
111	210	210	210
112	211	211	211
113	212	212	212
114	213	213	213
115	214	214	214
116	215	215	215
117	216	216	216
118	217	217	217
119	218	218	218
120	219	219	219
121	220	220	220
122	221	221	221
123	222	222	222
124	223	223	223
125	224	224	224
126	225	225	225
127	226	226	226
128	227	227	227
129	228	228	228
130	229	229	229
131	230	230	230
132	231	231	231
133	232	232	232
134	233	233	233
135	234	234	234
136	235	235	235
137	236	236	236
138	237	237	237
139	238	238	238
140	239	239	239
141	240	240	240
142	241	241	241
143	242	242	242
144	243	243	243
145	244	244	244
146	245	245	245
147	246	246	246
148	247	247	247
149	248	248	248
150	249	249	249
151	250	250	250
152	251	251	251
153	252	252	252
154	253	253	253
155	254	254	254
156	255	255	255
157	256	256	256
158	257	257	257
159	258	258	258
160	259	259	259
161	260	260	260
162	261	261	261
163	262	262	262
164	263	263	263
165	264	264	264
166	265	265	265
167	266	266	266
168	267	267	267
169	268	268	268
170	269	269	269
171	270	270	270
172	271	271	271
173	272	272	272
174	273	273	273
175	274	274	274
176	275	275	275
177	276	276	276
178	277	277	277
179	278	278	278
180	279	279	279
181	280	280	280
182	281	281	281
183	282	282	282
184	283	283	283
185	284	284	284
186	285	285	285
187	286	286	286
188	287	287	287
189	288	288	288
190	289	289	289
191	290	290	290
192	291	291	291
193	292	292	292
194	293	293	293
195	294	294	294
196	295	295	295
197	296	296	296
198	297	297	297
199	298	298	298
200	299	299	299
201	300	300	300
202	301	301	301
203	302	302	302
204	303	303	303
205	304	304	304
206	305	305	305
207	306	306	306
208	307	307	307
209	308	308	308
210	309	309	309
211	310	310	310
212	311	311	311
213	312	312	312
214	313	313	313
215	314	314	314
216	315	315	315
217	316	316	316
218	317	317	317
219	318	318	318
220	319	319	319
221	320	320	320
222	321	321	321
223	322	322	322
224	323	323	323
225	324	324	324
226	325	325	325
227	326	326	326
228	327	327	327
229	328	328	328
230	329	329	329
231	330	330	330
232	331	331	331
233	332	332	332
234	333	333	333
235	334	334	334
236	335	335	335
237	336	336	336
238	337	337	337
239	338	338	338
240	339	339	339
241	340	340	340
242	341	341	341
243	342	342	342
244	343	343	343
245	344	344	344
246	345	345	345
247	346	346	346
248	347	347	347
249	348	348	348
250	349	349	349
251	350	350	350
252	351	351	351
253	352	352	352
254	353	353	353
255	354	354	354
256	355	355	355
257	356	356	356
258	357	357	357
259	358	358	358
260	359	359	359
261	360	360	360
262	361	361	361
263	362	362	362
264	363	363	363
265	364	364	364
266	365	365	365
267	366	366	366
268	367	367	367
269	368	368	368
270	369	369	369
271	370	370	370
272	371	371	371
273	372	372	372
274	373	373	373
275	374	374	374
276	375	375	375
277	376	376	376
278	377	377	377
279	378		

Appendix

K

Weather Condition

Daily Extract of Meteorological Observations , August 2018 - Tseung Kwan O

Day	Mean Pressure (hPa)	Air Temperature			Mean Dew Point (deg. C)	Mean Relative Humidity (%)	Total Rainfall (mm)	Prevailing Wind Direction (degrees)	Mean Wind Speed (km/h)
		Absolute Daily Max (deg. C)	Mean (deg.C)	Absolute Daily Min (deg. C)					
1	***	32.5	29.2	27.1	25.6	81	4	220	5.5
2	***	33.8	29.3	26.2	25.5	81	9.5	220	5.4
3	***	33.4	29	27.2	25.6	83	2	210	4.9
4	***	32.1	28.2	26.5	26.1	89	2	230	3
5	***	33.2	29	25.9	25.7	84	0	190	4.1
6	***	33.9	29.4	26.5	26	83	0	190	3.9
7	***	34.1	29.1	26	25.6	83	0	290	3.2
8	***	32.5	29.1	25	25.2	81	2	50	6.2
9	***	33.1	29.8	27.9	25.2	77	0	130	8.1
10	***	29.1	26.7	24.9	25.6	94	72	10	5.4
11	***	27.8#	26.7	25.8#	25.9	95	46.5	100	5.3
12	***	27.9	26.5	25.4	25.7	95	27	130	5
13	***	31.6	28.3	26.1	26.1	88	2	60	6.7
14	***	29.8	27.2	25.8	25.8	92	31	20	7
15	***	30	27.4	25.7	25.6	90	6.5	100	5.3
16	***	28.5	26.7	25.6	25.9	95	14	100	4
17	***	27.8	26.1	24.9	25.6	97	52.5	220	2.4
18	***	31.9	27.6	25.5	25.8	91	31.5	180	2.8
19	***	31.5#	27.7	26.0#	26.1	91	18	190	4
20	***	29.6	26.8	25.4	26.1	96	25	190	2.5
21	***	32.4#	27.9	25.1#	25.8	89	0	190	3.8
22	***	33	28.2	24.5	25.6	87	33	280	3.8
23	***	32.3	27.1	23.8	25.5	91	19.5	290	4.7
24	***	32.5	28.1	24.4	26.5	91	0	220	2.5
25	***	34.4#	29.5	26.4#	25.1	79	0	220	4.2
26	***	32.5	27.5	24.8	24.7	86	55	290	4.2
27	***	30	26.4	24.5	24.8	91	18	190	3.7
28	***	28.8#	25.7	24.4#	25.1	97	67	290	2.5
29	***	28.7	26.5	25.4	25.4	94	32.5	200	3.7
30	***	28.2	27.2	26.3	25.6	91	5	190	6.5
31	***	27.8	27.1	26.5	25.8	92	3.5	200	5.5

data incomplete

Rainfall measured in increment of 0.5 mm. Amount of < 0.5 mm cannot be detected

Daily Extract of Meteorological Observations , September 2018 - Tseung Kwan O

Day	Mean Pressure (hPa)	Air Temperature			Mean Dew Point (deg. C)	Mean Relative Humidity (%)	Total Rainfall (mm)	Prevailing Wind Direction (degrees)	Mean Wind Speed (km/h)
		Absolute Daily Max (deg. C)	Mean (deg. C)	Absolute Daily Min (deg. C)					
1	***	26.9	25.5	24	25.2	98	58.5	200	2.3
2	***	29.5	25.5	24.1	24.5	94	8	190	3.3
3	***	30.8	26.7	24.2	24.7	89	2	190	4
4	***	33.6#	28.6	25.2#	25.2	83	0	190	4.8
5	***	34.3#	28.7	25.5#	26	86	13	280	3.2
6	***	31.6	28	25.6	26.3	91	0	20	4
7	***	32.4	28.4	25.8	25.8	87	1	190	3.6
8	***	31	26.8	24.2	23.9	84	0.5	60	4.9
9	***	30.5	26.1	23.6	22.4	81	28	50	4.5
10	***	28.8	25	23.1	23.1	90	0.5	20	3.1
11	***	32.7	26.4	22.3	21.2	76	0	60	3.9
12	***	28.3	26.7	24.9	23.7	84	0	70	9.3
13	***	29.6	27.1	25.8	24.7	87	1	60	7.7
14	***	33.1#	28	25.1#	24.4	82	0	30	4.8
15	***	35.2	29.8	24.4	23.1	70	0	330	7.3
16	***	30.8#	26.1	23.7#	23.5	87	137	120	28.6
17	***	28.5	27.2	25.5	25.1	88	2.5	120	17.5
18	***	29.9	27.2	24.8	25.2	89	1	110	7.7
19	***	33.2	27.5	23.7	24.4	85	0	190	3
20	***	32.9	28.2	24.7	24.3	81	0	210	3.6
21	***	33	27.8	24.4	23.4	79	0	190	3.5
22	***	33.2	28.1	24.2	24.2	81	0	190	4.5
23	***	32	28.1	25.8	24.9	84	1	190	5
24	***	29.6	26.5	25	24.7	90	23.5	130	4.4
25	***	30.1	26.8	24.2	22.6	79	15	110	5.6
26	***	29.4	25.7	24	23.1	86	17.5	190	3.1
27	***	29.4	25.6	23.5	22.9	86	0	190	3.2
28	***	31.7#	26.7	23.9#	21.1	73	0	330	6.3
29	***	31.7	26.7	23	18.3	61	0	50	7.5
30	***	31.3	26.5	23	18.3	63	0	50	6.5

data incomplete

Rainfall measured in increment of 0.5 mm. Amount of < 0.5 mm cannot be detected

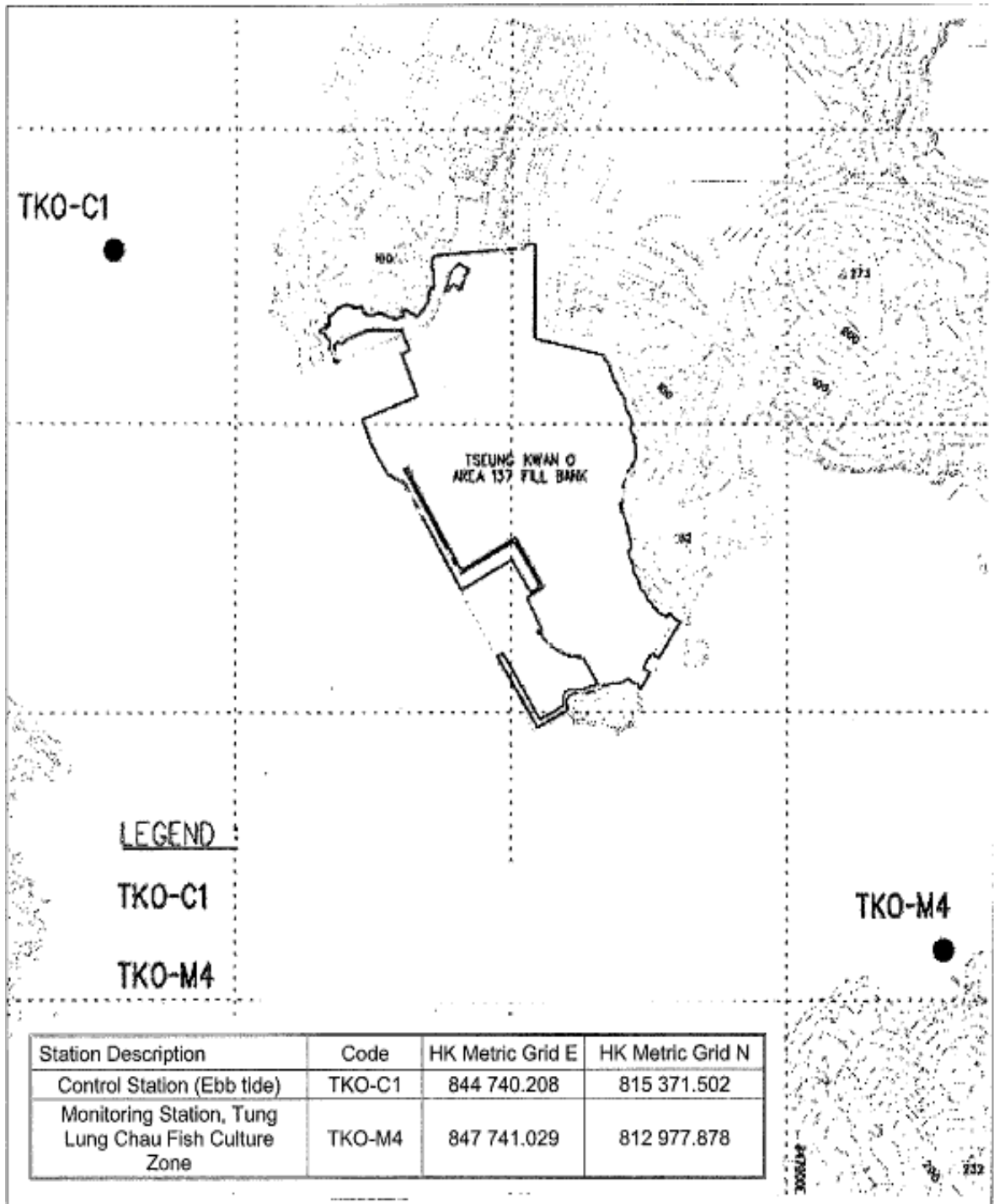
Daily Extract of Meteorological Observations , October 2018 - Tseung Kwan O

Day	Mean Pressure (hPa)	Air Temperature			Mean Dew Point (deg. C)	Mean Relative Humidity (%)	Total Rainfall (mm)	Prevailing Wind Direction (degrees)	Mean Wind Speed (km/h)
		Absolute Daily Max (deg. C)	Mean (deg.C)	Absolute Daily Min (deg. C)					
1	***	29.3	25.2	21.2	20.7	78	3	300	3.9
2	***	30.6	25.8	21.8	19.7	71	0	130	5.7
3	***	30.2	25.8	21.7	19.8	71	0	40	6.3
4	***	31.1	24.9	20.5	16	62	0	50	5.4
5	***	31.1	25.1	20.3	11.5	44	0	350	8.1
6	***	31	25.1	20.3	13.8	52	0	70	4.9
7	***	30.8	26.2	22.4	20.3	72	0	140	6.1
8	***	29.8	26.5	24.2	21	72	0	140	7.5
9	***	28.4	25.1	22.8	22.2	84	3.5	130	4.1
10	***	28.9	23.5	21.4	21.5	89	17.5	60	4.2
11	***	25	22.4	21.1	17.5	74	0	60	7.4
12	***	26.6	22.9	20.5	18.3	76	3	60	6.1
13	***	26.6	23.8	21.1	19.1	76	1	130	7
14	***	25.4	24.2	22.5	20.9	82	1	130	5.7
15	***	25.4	24.3	23.6	22.4	89	6	130	4
16	***	25.6	23.4	21.6	22.8	96	8.5	60	3
17	***	25.1	22.3	20.8	20.7	91	3	60	4.7
18	***	23.6	21.7	20.2	20.2	91	10.5	20	6.5
19	***	25.9	23.7	22.4	19.6	78	0	50	10.5
20	***	24.9	23.6	22.8	19.6	78	0	60	8.1
21	***	27.4	24	21.9	20.1	79	0	60	6.9
22	***	27.6	23.8	21.2	21.4	87	0	20	3.5
23	***	27.5	23.9	21.4	21.1	85	0.5	10	4.2
24	***	26.2	24	22.1	21.5	86	1	130	5.9
25	***	27.3	24.3	21.8	21.2	84	0	140	4.7
26	***	29.8	25.3	21.1	21.4	80	0	340	3.6
27	***	28.6	24.1	20.2	17.3	67	0	50	6
28	***	28.4	22.2	17.6	13.2	59	0	60	5.3
29	***	30	23.4	17.6	7.6	38	0	340	5.8
30	***	29.3	24.3	21	7.6	35	0	40	9.1
31	***	28.1	24.1	20.6	8.3	37	0	40	11.2

data incomplete

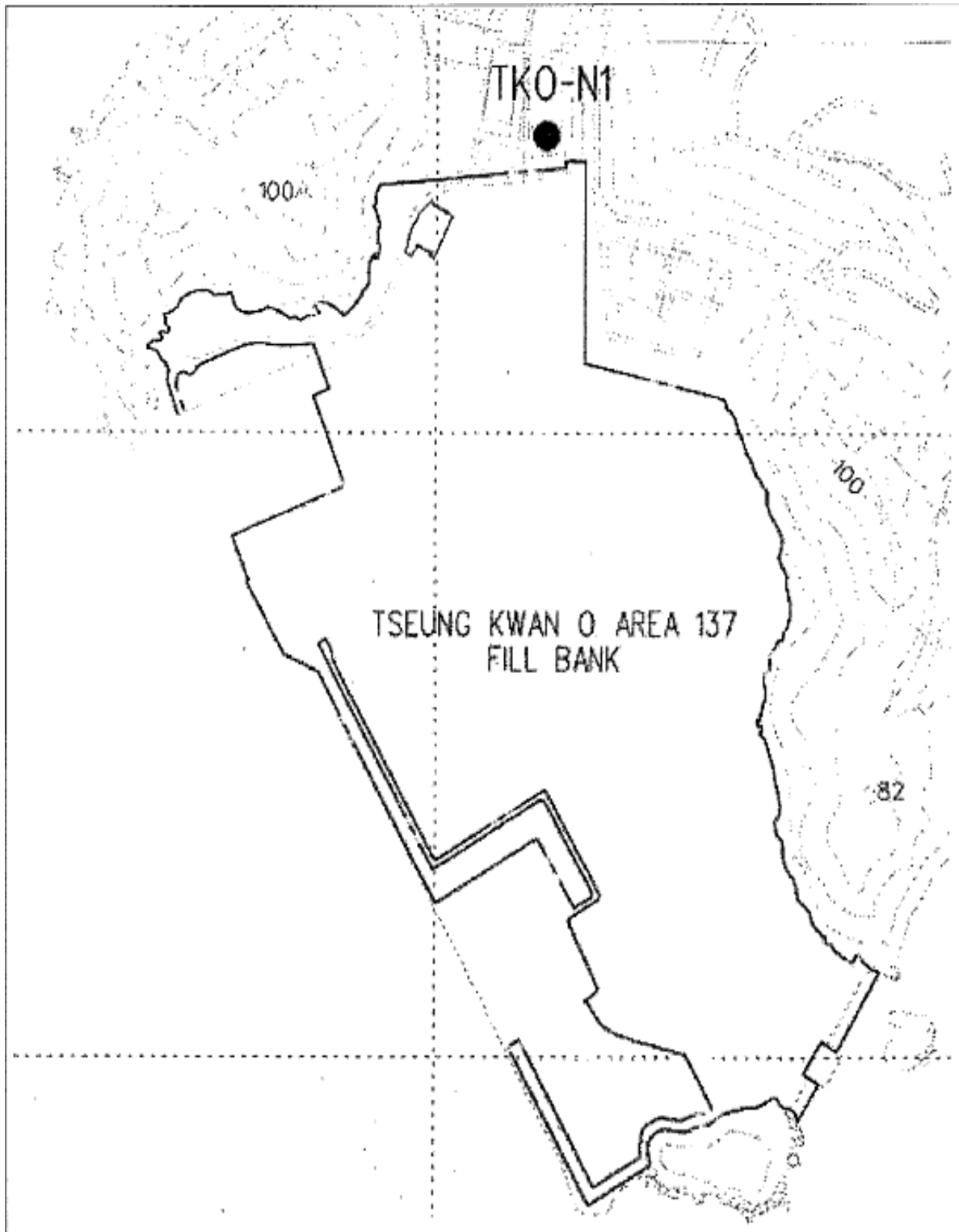
Rainfall measured in increment of 0.5 mm. Amount of < 0.5 mm cannot be detected

Figures



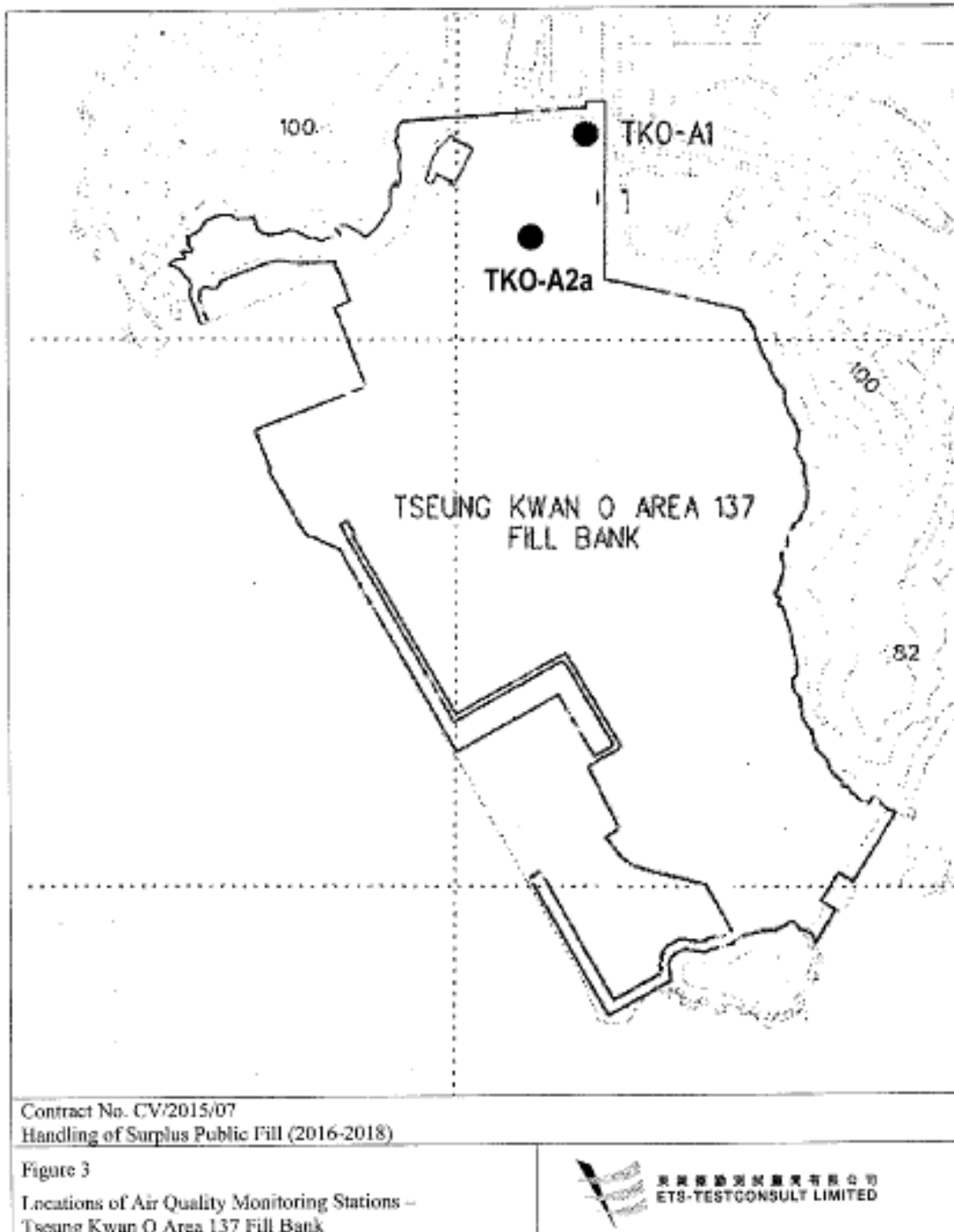
Contract No. CV/2015/07
Handling of Surplus Public Fill (2016-2018)

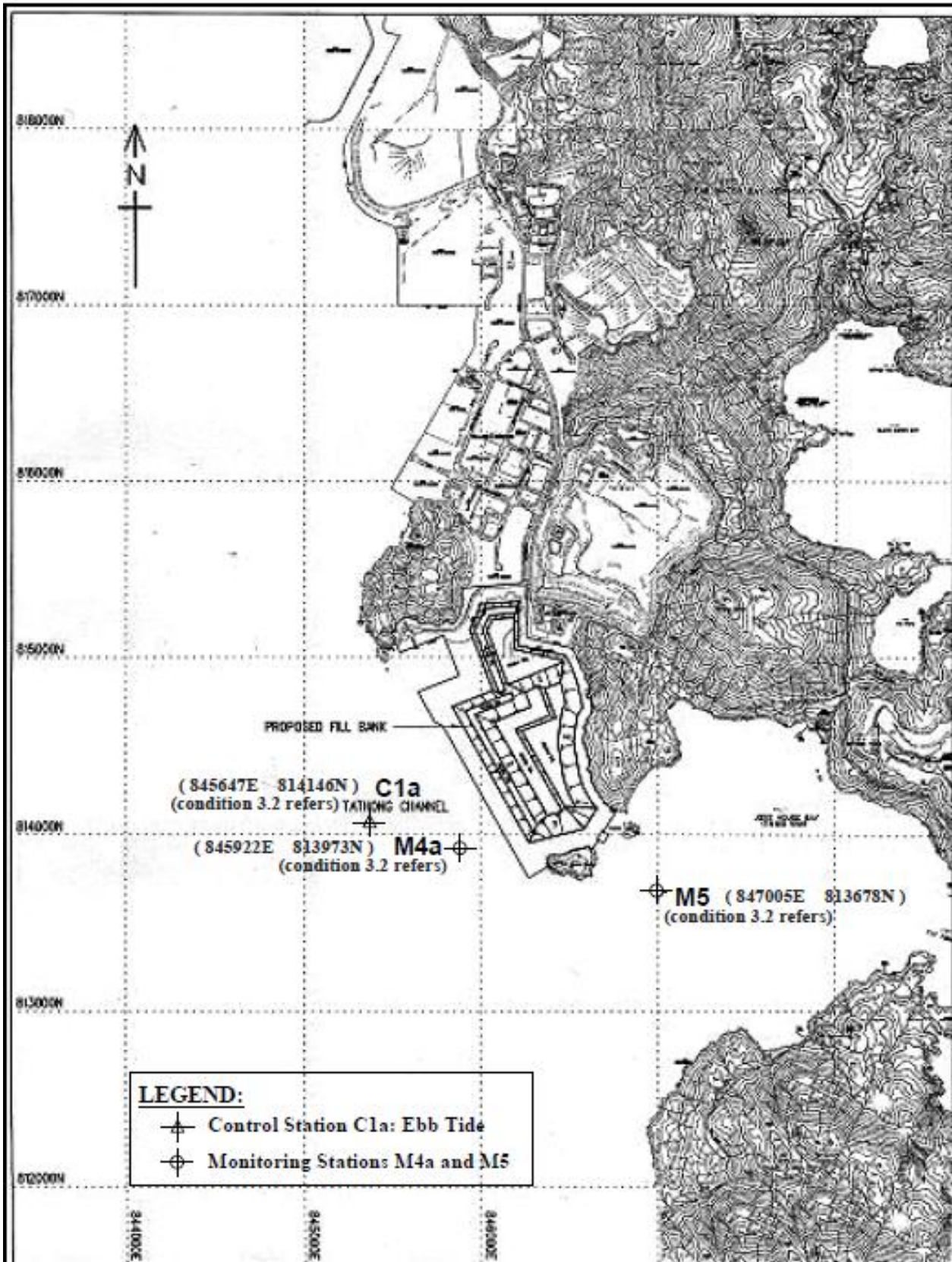
Figure 1
Locations of Water Quality Monitoring Stations –
Tseung Kwan O Area 137 Fill Bank



Contract No. CV/2015/07
Handling of Surplus Public Fill (2016-2018)

Figure 2
Location of Noise Monitoring Station –
Tseung Kwan O Area 137 Fill Bank





Contract No. CV/2015/07
 Handling of Surplus Public Fill(2016-2018)

Figure 4
 Locations of Additional Water Quality Monitoring Stations (3RS
 project)
 Tseung Kwan O Area 137 Fill Bank



東業德勤測試顧問有限公司
 ETS-TESTCONSULT LIMITED