

ATAL-Degrémont-China State Joint Venture

Contract No. DC/2008/03
Design, Build and Operate Pillar
Point Sewage Treatment Works:
Thirty-third Monthly EM&A Report

August 2013

Environmental Resources Management

16/F, DCH Commercial Centre,
25 Westlands Road,

Quarry Bay, Hong Kong

Telephone: (852) 2271 3000

Facsimile: (852) 2723 5660

E-mail: post.hk@erm.com

<http://www.erm.com>

ATAL-Degrémont-China State Joint Venture

Contract No. DC/2008/03
Design, Build and Operate Pillar
Point Sewage Treatment Works:
Thirty-third Monthly EM&A Report

August 2013

Reference 0119806

| | |
|---|---|
| For and on behalf of ERM-Hong Kong, Limited | |
| Approved by: | Frank Wan |
| Signed: |  |
| Position: | Partner |
| Certified by: |  (Environmental Team Leader – Winnie Ko) |
| Certified by: |  (Registered Landscape Architect (R127) – Tai Kai Wai) |
| Date: | 9 August 2013 |

Your Ref:
Our Ref: 60017423/C/iyys13080801

By Hand & By Fax (2833 9162)

Drainage Services Department
Sewage Services Branch
Harbour Area Treatment Scheme Division
5/F., Western Magistracy,
2A Pok Fu Lam Road,
Hong Kong.

Attn: Mr. Kenley C.K. KWOK (T: 2159 3409)

8 August 2013

Dear Sir,

**Contract No. DC/2008/03
Design, Build and Operate
Pillar Point Sewage Treatment Works**

Monthly EM&A Report for July 2013

Reference is made to Environmental Team (ET)'s draft of the Monthly EM&A Report for July 2013 provided by email dated 6 and 8 August 2013. We have no further comment.

We hereby verify the said Monthly EM&A Report as having complied with the requirement as set out in the EM&A Manual in accordance with the condition 3.6 of Environmental Permit No. EP-321/2008/A.

Should you have any queries, please feel free to contact the undersigned at 3922 9393.

Yours faithfully,

For and on behalf of
AECOM Asia Co. Ltd.



Y T Tang
Independent Environmental Checker

c.c. AECOM – Mr. C Y Hung
ERM – Ms. Winnie Ko
ATAL–Degremont–China State JV – Mr. C.Y. Fong

(Fax No. 2404 3310)
(Fax No. 2723 5660)
(Fax No. 2811 3321)

CONTENTS

EXECUTIVE SUMMARY

| | | |
|-------|---|----|
| 1 | INTRODUCTION | 1 |
| 1.1 | <i>PURPOSE OF THE REPORT</i> | 1 |
| 1.2 | <i>STRUCTURE OF THE REPORT</i> | 1 |
| 2 | PROJECT INFORMATION | 3 |
| 2.1 | <i>BACKGROUND</i> | 3 |
| 2.2 | <i>GENERAL SITE DESCRIPTION</i> | 3 |
| 2.3 | <i>CONSTRUCTION ACTIVITIES</i> | 4 |
| 2.4 | <i>PROJECT ORGANISATION AND MANAGEMENT STRUCTURE</i> | 4 |
| 2.5 | <i>STATUS OF ENVIRONMENTAL APPROVAL DOCUMENTS</i> | 4 |
| 3 | ENVIRONMENTAL MONITORING REQUIREMENTS | 6 |
| 3.1 | <i>AIR QUALITY MONITORING</i> | 6 |
| 3.1.1 | <i>Monitoring Location</i> | 6 |
| 3.1.2 | <i>Monitoring Parameter and Frequency</i> | 6 |
| 3.1.3 | <i>Action and Limit Levels</i> | 6 |
| 3.1.4 | <i>Monitoring Equipment</i> | 6 |
| 3.1.5 | <i>Monitoring Methodology</i> | 7 |
| 3.1.6 | <i>Event and Action Plan</i> | 9 |
| 3.2 | <i>LANDSCAPE AND VISUAL MONITORING</i> | 9 |
| 3.3 | <i>ENVIRONMENTAL MITIGATION MEASURES AND ENVIRONMENTAL REQUIREMENTS IN CONTRACT</i> | 9 |
| 4 | IMPLEMENTATION STATUS ON ENVIRONMENTAL PROTECTION REQUIREMENTS | 10 |
| 5 | MONITORING RESULTS | 11 |
| 5.1 | <i>AIR QUALITY</i> | 11 |
| 6 | WASTE MANAGEMENT | 12 |
| 7 | ENVIRONMENTAL INSPECTIONS | 13 |
| 7.1 | <i>WEEKLY SITE AUDITS</i> | 13 |
| 7.2 | <i>LANDSCAPE AND VISUAL MONITORING</i> | 13 |
| 8 | ENVIRONMENTAL NON-CONFORMANCE | 15 |
| 8.1.1 | <i>Summary of Monitoring Exceedance</i> | 15 |
| 8.1.2 | <i>Summary of Environmental Non-Compliance</i> | 15 |
| 8.1.3 | <i>Summary of Environmental Complaint</i> | 15 |
| 8.1.4 | <i>Summary of Environmental Summon and Successful Prosecution</i> | 15 |
| 9 | FUTURE KEY ISSUES | 16 |

| | | |
|-------|--|----|
| 9.1.1 | <i>Key Issues for the Coming Month</i> | 16 |
| 9.1.2 | <i>Monitoring Schedule for the Next Reporting Period</i> | 16 |
| 9.1.3 | <i>Construction Programme for the Next Three Months</i> | 16 |
| 10 | REVIEW OF THE EM&A DATA AND EIA PREDICTIONS | 17 |
| 10.1 | <i>AIR QUALITY</i> | 17 |
| 10.2 | <i>WASTE MANAGEMENT</i> | 17 |
| 10.3 | <i>CONCLUSION OF THE REVIEW</i> | 18 |
| 11 | CONCLUSIONS | 19 |

LIST OF TABLES

| | |
|------------|---|
| Table 2.1 | Summary of Construction Activities Undertaken in Reporting Period |
| Table 2.2 | Summary of Environmental Licensing, Notification and Permit Status |
| Table 3.1 | Construction Phase Air Monitoring Locations |
| Table 3.2 | Construction Phase Air Quality Monitoring Parameters and Frequency |
| Table 3.3 | Action and Limit Levels for Air Quality |
| Table 3.4 | TSP Monitoring Equipment |
| Table 6.1 | Quantities of Waste Generated from the Project |
| Table 9.1 | Construction Works to be Undertaken in the Next Reporting Period |
| Table 10.1 | Comparison of the HKAQO and Air Quality Monitoring Results |
| Table 10.2 | Quantity of Actual Amount of C&D Materials, General Wastes and Chemical Wastes Generated and EIA Estimation |

LIST OF ANNEXES

| | |
|---------|--|
| Annex A | Location of Project |
| Annex B | Works Location |
| Annex C | Project Organization Chart and Contact Detail |
| Annex D | Locations of Air Quality Monitoring Stations |
| Annex E | Monitoring Schedule of the Reporting Month and Next Month |
| Annex F | Calibration Reports for HVSSs |
| Annex G | 24-hour and 1-hour TSP Monitoring Results |
| Annex H | Event / Action Plan for Air Quality Monitoring |
| Annex I | Implementation Schedule of Mitigation Measures |
| Annex J | Waste Flow Table |
| Annex K | Environmental complaint, Environmental Summons and Prosecution Log |
| Annex L | Construction Programme for the Project |

EXECUTIVE SUMMARY

The construction works of *DC/2008/03 of Design, Build and Operate Pillar Point Sewage Treatment Works (the Project)* commenced on 13 November 2010. This is the 33rd monthly Environmental Monitoring and Audit (EM&A) report presenting the EM&A works carried out during the period from 1 to 31 July 2013 in accordance with the EM&A Manual.

Summary of Construction Works undertaken during the Reporting Month

Works undertaken in the reporting month included:

- Construct finishing works at the Administration Building, Septic Waste Reception Station, PTW, CEPT, Reuse Water Pump Room, Chemical Building and Sludge Dewatering Building;
- Construct staircase and fins wall at Sludge Dewatering Building;
- Install E&M equipment at the PTW, CEPT, UV Building, Septic Waste Reception Station, Reuse Water Pump Room, Chemical Building, Electrical buildings No.1, No.3 and No.4;
- Install BS and DO duct at the Deodorisation Units Portion A and Deodorisation Units Portion B;
- Construct drainage, cable ducts, water mains and boundary walls at P2;
- Construct backfilling at Payment Flow Meter Chamber;
- Construct excavation at Sludge Skip Storage Building; and
- Construct backfilling and drainage works for the whole site.

Environmental Monitoring and Audit Progress

A summary of the monitoring activities undertaken in this reporting period is listed below:

- | | |
|---|---------|
| • 24-hour TSP Monitoring at each monitoring station (AM1 and AM2) | 6 sets |
| • 1-hour TSP Monitoring at each monitoring station (AM1 and AM2) | 18 sets |
| • Joint Environmental Site Inspection | 4 times |
| • Landscape & Visual Monitoring | Once |

Air Quality

6 sets of 24-hour TSP and 18 sets of 1-hr TSP measurements were carried out at each of the designated monitoring stations during the reporting period. No exceedance was recorded during the reporting period.

Waste Management

Waste generated from this Project includes inert construction and demolition (C&D) materials (public fill) and non-inert C&D materials (construction wastes). In total, 1,246.64 tonnes of inert C&D material were generated from the Project, of which 100 tonnes were reused in this Contract and the remaining was disposed as public fill. 100.00 kg of metals, 60.00 kg of papers/ cardboard packing and 10.00 kg of plastics were sent to recyclers for recycling during the reporting period.

Environmental Site Inspection

Four weekly joint environmental site inspections were carried out by the representatives of the Contractor, SOR and the Environmental Team (ET). Details of the audit findings and implementation status of the mitigation measures are presented in *Section 7.1*.

Landscape & Visual

Review on landscape and visual mitigation measures was performed on 19 July 2013. Details of the audit findings and implementation status of the mitigation measures are presented in *Sections 3.2* and *7.2*.

Environmental Exceedance/Non-conformance/Compliant/Summons and Prosecution

No exceedance was recorded during the reporting period.

No non-compliance event was recorded during the reporting period.

No environmental complaint and summon/prosecution was received in this reporting period.

Future Key Issues

Works to be undertaken in the next reporting month include:

- Construct finishing works at the Administration Building, Septic Waste Reception Station , Sludge Dewatering Building, Sludge Skip Storage Building, PTW, CEPT , Existing Solid Handling Building, Reuse Water Pump Room and Chemical Building;
- Construction wall and roof Sludge Skip Storage Building;
- Install E&M equipment at Sludge Dewatering Building, PTW, CEPT, UV Building, Septic Waste Reception Station , Reuse Water Pump Room , Chemical Building and Electrical buildings No.1, No.3 and No.4;
- Install BS and DO duct at Deodorisation Units Portions A and B;
- Construct drainage, cable ducts, pipe bridge installation and boundary walls and water mains at P2;

Potential environmental impacts arising from the above construction activities are mainly associated with dust, construction noise, site runoffs, waste management and landscaping issues.

1 INTRODUCTION

ERM-Hong Kong, Limited (ERM) was appointed by ATAL – Degrémont – China State Joint Venture (ADC-JV) (the Contractor) as the Environmental Team (ET) to undertake the Environmental Monitoring and Audit (EM&A) programme for the *Contract No. DC/2008/03 of Design, Build and Operate Pillar Point Sewage Treatment Works (the Project)*.

1.1 PURPOSE OF THE REPORT

This is the 33rd EM&A report which summarises the monitoring results and audit findings for the EM&A programme during the reporting period from 1 to 31 July 2013.

1.2 STRUCTURE OF THE REPORT

The structure of the report is as follows:

Section 1: **Introduction**

It details the scope and structure of the report.

Section 2: **Project Information**

It summarises the background and scope of the Project, site description, project organization, construction programme, construction works undertaken and status of the Environmental Permits (EP)/licences over the construction phase of the Project.

Section 3: **Environmental Monitoring Requirements**

It summarises the environmental monitoring requirements including monitoring parameters, programmes, methodologies, frequency, locations, Action and Limit Levels, Event/Action Plans, environmental mitigation measures as recommended in the approved EIA report, EP and relevant environmental requirements stated in the Contract Specification.

Section 4: **Implementation Status on Environmental Mitigation Measures**

It summarises the implementation of environmental protection measures during the reporting period.

Section 5: **Monitoring Results**

It summarises the monitoring results obtained in the reporting period.

Section 6: **Waste Management**

It summarises the quantity of public fill and construction waste generated in the reporting period

Section 7: **Environmental Site Inspection**

It summarises the audit findings of the weekly site inspections undertaken within the reporting period.

Section 8: **Environmental Non-conformance**

It summarises any exceedance of environmental performance standard, environmental complaints and summons received within the reporting period.

Section 9: **Further Key Issues**

It summarises the impact forecast and monitoring schedule for the next reporting month.

Section 10: **Review of the EM&A Data and Predictions**

It compares the monitoring data and waste quantity against the predictions in the approved Project EIA report.

Section 11 : **Conclusions**

2.1**BACKGROUND**

The existing Pillar Point Sewage Treatment Works (PPSTW) is located to the north of the Tuen Mun River Trade Terminal and is abutting the Lung Mun Road in the north. It is a preliminary treatment works with screening and grit removal processes and the treated effluent is discharged to the sea (North Western Water Control Zone) via a twin submarine outfall. The *Review of the Tuen Mun and Tsing Yi Sewerage Master Plan (RTMTYSMP)*, commissioned in February 1999, recommended that the sewage treatment capacity be expanded and the plant be upgraded to chemically enhanced primary treatment (CEPT) with disinfection. This is to cater for the projected ultimate population and planned developments in the Tuen Mun area, and to improve the effluent quality reducing pollution loadings to the receiving waters.

The upgrading of the PPSTW comprises the following works:

- expanding the treatment capacity of the existing PPSTW to cope with the increased peak wet-weather sewage flow in Tuen Mun area;
- upgrading the sewage treatment level of the existing PPSTW to incorporate chemical treatment with disinfection at minimum removal rates of 70%, 55% and 99.9% of suspended solids (SS), biochemical oxygen demand (BOD) and *E.coli*, respectively;
- upgrading the existing septic waste reception facilities at PPSTW; and
- providing and upgrading ancillary facilities including the administration building, workshop, laboratory, odour control facilities, sludge handling and dewatering facilities, access roads and minor landscaping works within the STW for the operation and maintenance of the upgraded STW.

The potential environmental impacts of the Project have been studied in the “*Upgrading of Pillar Point Sewage Treatment Works*” (EIAO Register No: AEIAR-145/2008). The EIA was approved on 10 June 2008 under the *Environmental Impact Assessment Ordinance* (EIAO) and an Environmental Permit (EP-321/2008) for the works was granted on 17 November 2008. A variation of an Environmental Permit was granted on 23 April 2013 (EP-321/2008/A). Under the requirements of Condition 3.1 of EP-321/2008/A, an EM&A programme as set out in the EM&A Manual is required to be implemented.

The construction works commenced on 13 November 2010 and are scheduled for completion by 2014.

2.2**GENERAL SITE DESCRIPTION**

The open area adjacent to the existing PPSTW has been designated for the upgrading works. The layout of the upgrading works is illustrated in *Annex*

A.

2.3 CONSTRUCTION ACTIVITIES

A summary of the major construction activities undertaken in the reporting period is shown in *Table 2.1*. The locations of the construction activities are shown in *Annex B*. The construction programme of the Project in the reporting month and the upcoming month is presented in *Annex L*.

Table 2.1 Summary of Construction Activities Undertaken in the Reporting Period

| Construction Activities Undertaken | |
|---|---|
| • | Construct finishing works at the Administration Building, Septic Waste Reception Station, PTW, CEPT, Reuse Water Pump Room, Chemical Building and Sludge Dewatering Building; |
| • | Construct staircase and fins wall at Sludge Dewatering Building; |
| • | Install E&M equipment at the PTW, CEPT, UV Building, Septic Waste Reception Station, Reuse Water Pump Room, Chemical Building, Electrical buildings No.1, No.3 and No.4; |
| • | Install BS and DO duct at the Deodorisation Units Portion A and Deodorisation Units Portion B; |
| • | Construct drainage, cable ducts, water mains and boundary walls at P2; |
| • | Construct backfilling at Payment Flow Meter Chamber; |
| • | Construct excavation at Sludge Skip Storage Building; and |
| • | Construct backfilling and drainage works for the whole site. |

2.4 PROJECT ORGANISATION AND MANAGEMENT STRUCTURE

The project organisation chart and contact details are shown in *Annex C*.

2.5 STATUS OF ENVIRONMENTAL APPROVAL DOCUMENTS

A summary of the valid permits, licences, and/or notifications on environmental protection for this Project is presented in *Table 2.2*.

Table 2.2 Summary of Environmental Licensing, Notification and Permit Status

| Permit/ Licences/ Notification | Reference | Validity Period | Remarks |
|---|------------------|-------------------------|--|
| Environmental Permit | EP-321/2008/A | Throughout the Contract | Permit granted on 23 April 2013 |
| Notification of Construction Works under the Air Pollution Control (Construction Dust) Regulation | Ref No. 308136 | Throughout the Contract | - |
| Water Discharge License | WT00008027-2010 | Till 31 December 2015 | Wastewater discharge licence was issued by EPD on 7 December 2010. |

| Permit/ Licences/ Notification | Reference | Validity Period | Remarks |
|---|-------------------|-----------------------------------|--|
| Construction Noise Permit | GW-RW0974-12 | 28 January 2013- 27 July 2013 | Superseded by GW- RW0466-13 |
| | GW-RW0466-13 | 28 July 2013 - 27 January 2014 | |
| Chemical Waste Producer Registration | 5213-421-A2620-01 | Throughout the Contract | Licence approved on 28 October 2010 |

3.1 AIR QUALITY MONITORING

3.1.1 Monitoring Location

The proposed air quality monitoring stations for the construction phase of the Project, as recommended in the approved EM&A Manual, are given in *Table 3.1* and shown in *Annex D*. The proposed locations (AM1 and AM2) have been agreed with the Drainage Services Department (DSD), Environmental Protection Department (EPD) and the Independent Environmental Checker (IEC).

Table 3.1 Construction Phase Air Monitoring Locations

| Monitoring ID | Air Quality Monitoring Station |
|---------------|---|
| AM1 | Tuen Mun EMSD Servicing Vehicle Station |
| AM2 | River Trade Terminal Office |

3.1.2 Monitoring Parameter and Frequency

The construction phase air quality monitoring has been conducted at the designated monitoring stations in accordance with the requirements stipulated in the EM&A Manual. 1-hour and 24-hour TSP levels have been monitored at the frequency and duration stated in *Table 3.2*. The construction phase TSP monitoring has been conducted as per the schedule presented in *Annex E*.

Table 3.2 Construction Phase Air Quality Monitoring Parameters and Frequency

| Parameter | Frequency |
|---------------------|----------------------|
| 24-hour average TSP | Once every 6 days |
| 1-hour average TSP | 3 times every 6 days |

3.1.3 Action and Limit Levels

The Action and Limit levels have been established and presented in *Table 3.3*.

Table 3.3 Action and Limit Levels for Air Quality

| Parameter | Air Monitoring Station | Action Level, μgm^{-3} | Limit Level, μgm^{-3} |
|-------------|------------------------|-----------------------------------|----------------------------------|
| 24-hour TSP | AM1 | 183 | 260 |
| | AM2 | 192 | 260 |
| 1-hour TSP | AM1 | 343 | 500 |
| | AM2 | 383 | 500 |

3.1.4 Monitoring Equipment

Continuous 24-hour and 1-hour TSP monitoring was performed using High Volume Samplers (HVS) with appropriate sampling inlets located at the designated monitoring stations.

The performance specification of HVS complied with the standard method “*Determination of Suspended Particulate Matter in the Atmosphere (High Volume Method)*” as stipulated in *US EPA Standard Title 40, Code of Federation Regulations Chapter 1 (Part 50 Appendix B)*. Table 3.4 summarises the equipment that were deployed for the 24-hour and 1-hour TSP monitoring respectively.

Table 3.4 *TSP Monitoring Equipment*

| Monitoring Station | Monitoring Equipment (HVS and Calibrator) |
|---------------------------|---|
| <i>24-hr and 1-hr TSP</i> | |
| AM1 | GMW GS-2310 (S/N 7580), CM-AIR-43 (S/N 0438320) |
| AM2 | GMW GS-2310 (S/N 1252), CM-AIR-43 (S/N 0438320) |

3.1.5 *Monitoring Methodology*

The setup locations of the HVSs were listed in Table 3.1. All HVSs were free-standing with no obstruction.

The following criteria were considered in the installation of the HVSs:

- appropriate support to secure the samplers against gusty wind were provided at AM1 and AM2;
- a minimum of 2m separation from walls, parapets and penthouses was required for rooftop samplers;
- no furnace or incinerator flues was nearby;
- airflow around the sampler was unrestricted; and
- permission was obtained to set up the samplers and gain access to the monitoring stations.

Preparation of Filter Papers

- glass fibre filters were labelled and sufficient filters that were clean and without pinholes were selected;
- all filters were equilibrated in the conditioning environment for 24 hours before weighing. The conditioning environment temperature was around 25°C and not variable by more than $\pm 3^\circ\text{C}$; the relative humidity (RH) was 40%; and
- SGS Hong Kong Ltd, a HOKLAS accredited laboratory, implemented comprehensive quality assurance and quality control programmes.

Field Monitoring

- the power supply was checked to ensure that the HVSs were working properly;

- the filter holder and area surrounding the filter were cleaned;
- the filter holder was removed by loosening the foul bolts and a new filter, with stamped number upward, on a supporting screen was aligned carefully;
- the filter was properly aligned on the screen so that the gasket formed an airtight seal on the outer edges of the filter;
- swing bolts were fastened to hold the filter holder down to the frame. The pressure applied should be sufficient to avoid air leakage at the edges;
- the shelter lid was closed and secured with an aluminium strip;
- the HVSs were warmed-up for about 5 minutes to establish run-temperature conditions;
- a new flowrate record sheet was inserted into the flow recorder;
- the flow rates of the HVSs were checked and adjusted to between 1.22 and 1.37 m³ min⁻¹ which were within the range specified in the EM&A Manual (ie 0.6 to 1.7 m³ min⁻¹);
- the programmable timer was set for a sampling period of 24 hours ± 1 hour, and the starting time, weather condition and the filter number were recorded;
- the initial elapsed time was recorded;
- at the end of sampling, the sampled filter was removed carefully and folded in half l so that only surfaces with collected particulate matter were in contact;
- the filter was placed in a clean plastic envelope and sealed;
- all monitoring information was recorded on a standard data sheet; and
- filters were sent to SGS Hong Kong Ltd for analysis.

Maintenance and Calibration

- the HVSs and their accessories were maintained in good working condition, eg. motor brushes were replaced routinely and electrical wiring was checked to ensure a continuous power supply; and
- the flow rate of each HVS with mass flow controller was calibrated using an orifice calibrator. Initial calibrations of the dust monitoring equipment were conducted upon installation and prior to commissioning. Five-point calibration was carried out for HVSs using CM-AIR-43 Calibration Kit. HVSs are calibrated on a bi-monthly basis. The calibration records for the HVSs are given in *Annex F*.

Wind Data Monitoring

Average wind data (wind speed and wind direction) during the monitoring period were obtained from the meteorological station at Tuen Mun of the Hong Kong Observatory (HKO) and were presented in *Annex G*.

3.1.6 *Event and Action Plan*

The Event/Action Plan (EAP) for air quality monitoring is presented in *Annex H*.

3.2 *LANDSCAPE AND VISUAL MONITORING*

In accordance with the EM&A Manual, monthly landscape and visual monitoring is required to ensure that the design, implementation and maintenance of landscape and visual mitigation measures recommended in the approved EIA Report are fully achieved. The monitoring procedures and criteria as described in the EM&A Manual were adopted.

3.3 *ENVIRONMENTAL MITIGATION MEASURES AND ENVIRONMENTAL REQUIREMENTS IN CONTRACT*

All the relevant environmental mitigation measures listed in the EIA Report and EM&A Manual as well as the specific environmental requirements stated in the Contract Specification are summarised in *Annex I*. A summary of the key environmental mitigation measures implemented as per the Contract Requirements is also presented in *Annex I*.

IMPLEMENTATION STATUS ON ENVIRONMENTAL PROTECTION REQUIREMENTS

The Contractor has implemented environmental mitigation measures and requirements as stated in the approved EIA Report, EM&A Manual and EP. The implementation status of the measures during the reporting period is summarised in *Annex I*.

5.1***AIR QUALITY***

A total of 6 sets of 24-hour and 18 sets of 1-hour TSP measurements were taken at each of the monitoring stations (AM1 and AM2) during the reporting period. The monitoring data for 24-hour and 1-hour TSP together with the wind data and graphical presentations for the past 4 months are presented in *Annex G*. The weather conditions during the monitoring period ranged from sunny to rainy. The local impacts near the monitoring stations of AM1 and AM2 were mainly associated with vehicular emissions. No exceedance of Action and Limit Level of the 1-hr and 24-hr TSP was recorded during the reporting period.

Wastes generated from this Project include inert construction and demolition (C&D) materials (public fill) and non-inert C&D materials (construction waste). Construction waste comprises general refuse, metals and paper/cardboard packaging materials. Metals generated from the Project are also grouped into construction waste as the materials were not disposed of with others at public fill. Reference has been made to the Monthly Summary Waste Flow Table prepared by the Contractor (see *Annex J*). With reference to the relevant handling records and trip tickets of this Project, the quantities of different types of waste generated in the reporting month are summarised in *Table 6.1*.

Table 6.1 Quantities of Waste Generated from the Project

| Month / Year | Quantity | | | |
|--------------|--|--|--|----------------|
| | Total Inert C&D Materials Generated ^(a) | Non-inert C&D Materials ^(b) | | |
| | | C&D Materials Recycled ^(c) | C&D Waste Disposed of at Landfill ^(d) | Chemical Waste |
| July 2013 | 1,246.64 tonnes | 170.00 kg | 71.15 tonnes | 0 L |

Notes:

(a) Inert C&D materials (public fill) include bricks, concrete, building debris, rubble and excavated soil. In total, 1,246.64 tonnes of inert C&D waste were generated from the Project, of which 100.00 tonnes were reused in this Contract and the remaining 1,146.64 tonnes were disposed as public fill. The detailed waste flow is presented in *Annex J*.

(b) Non-inert C&D materials (construction wastes) include metals, paper / cardboard packaging waste, plastics and other wastes such as general refuse. Metals generated from the Project were grouped into construction wastes as the materials were not disposed of with others at the public fill.

(c) 100.00 kg of metals, 60.00 kg of papers/ cardboard packing and 10.00 kg of plastics were sent to recyclers for recycling during the reporting period

(d) Construction wastes other than metals, paper/cardboard packaging, plastics and chemicals were disposed of at WENT Landfill by subcontractors.

7 ENVIRONMENTAL INSPECTIONS

7.1 WEEKLY SITE AUDITS

Joint site inspections were conducted by representatives of the Contractor, the SOR and the ET on 5, 12, 19 and 26 July 2013. The IEC was also present at the joint inspection on 26 July 2013.

Major observations during the reporting period are summarised as follows:

5 July 2013

- Tree tags were observed missing for the tree next to retained tree 174 and the trees along Gate 2. The Contractor was reminded to provide tree tags for these trees.

12 July 2013

- Drip trays were observed missing for a chemical drum at the west side of the Chemically Enhanced Primary Treatment Building, and the chemical drums at the south of the Existing Outfall Pumping Station. The Contractor was reminded to provide drip trays to prevent potential chemical spillage.
- Tree tags were observed missing for retained trees R29, R11, R12, R13, T07, T08, T03 and T04. The Contractor was reminded to provide tree tags for these trees.

19 July 2013

- Nil

26 July 2013

- A few storm drainages within the site were observed clogged. The Contractor was reminded to maintain proper drainages for the surface runoff especially during rainy season.
- Tree tag was observed missing for the retained tree 262. The Contractor was reminded to provide a tree tag for this tree.

Follow-up actions resulting from the last site inspections were taken as reported by the Contractor and their results were observed in the site inspections conducted in the reporting period.

7.2 LANDSCAPE AND VISUAL MONITORING

In accordance with the EM&A Manual, monthly landscape and visual monitoring is required to ensure that the design, implementation and maintenance of landscape and visual mitigation measures recommended in the EIA Report are fully achieved. A review of the landscape and visual

mitigation measures was performed on 19 July 2013. It was confirmed that most of the necessary landscape and visual mitigation measures as summarised in *Annex I* were implemented by the Contractor. The major findings are summarised as follow:

19 July 2013

- Ropes were observed anchoring the retained trees T13, 259, 260, 261, 262, 263, 264 and 265. The Contractor was reminded to remove the ropes from these trees and asked to inform the workers not to anchor the trees.

8 ENVIRONMENTAL NON-CONFORMANCE

8.1.1 *Summary of Monitoring Exceedance*

No exceedances of the Action and Limit Levels of 1-hr and 24-hr TSP was recorded during the reporting period.

8.1.2 *Summary of Environmental Non-Compliance*

No non-compliance event was recorded during the reporting period.

8.1.3 *Summary of Environmental Complaint*

No complaint was received during the reporting period. The cumulative environmental complaint log is shown in *Annex K*.

8.1.4 *Summary of Environmental Summon and Successful Prosecution*

No summon was received during the reporting period. The cumulative summons/prosecution log is shown in *Annex K*.

9.1.1 *Key Issues for the Coming Month*

Works to be undertaken for the coming monitoring period are summarised in *Table 9.1*.

Table 9.1 *Construction Works to be Undertaken in the Next Reporting Period*

| Work to be undertaken |
|--|
| <ul style="list-style-type: none"> • Construct finishing works at the Administration Building, Septic Waste Reception Station , Sludge Dewatering Building, Sludge Skip Storage Building, PTW, CEPT , Existing Solid Handling Building, Reuse Water Pump Room and Chemical Building; • Construction wall and roof Sludge Skip Storage Building; • Install E&M equipment at Sludge Dewatering Building, PTW, CEPT, UV Building, Septic Waste Reception Station , Reuse Water Pump Room , Chemical Building and Electrical buildings No.1, No.3 and No.4; • Install BS and DO duct at Deodorisation Units Portions A and B; • Construct drainage, cable ducts, pipe bridge installation and boundary walls and water mains at P2; • Construct excavation and structural works at Empty Sludge Skip Storage Area; • Construct backfilling and drainage works for the whole site. |

Potential environmental impacts arising from the above construction activities will be mainly associated with dust, construction noise, site runoffs, waste management and landscaping issues.

9.1.2 *Monitoring Schedule for the Next Reporting Period*

The tentative schedule of TSP monitoring for the next reporting period was presented in *Annex E*. Environmental monitoring will be conducted at the same monitoring locations in the next reporting period. The monitoring programme has been reviewed and was considered adequate for the nature of works in progress.

9.1.3 *Construction Programme for the Next Three Months*

The most up-to-date construction programme for the Project is presented in *Annex L*.

10.1 AIR QUALITY

Since the EIA has only included a qualitative assessment of dust impact during the construction phase, a comparison was made between the monitoring results from the start of the Project and the Hong Kong Air Quality Objectives (HKAQO) (see *Table 10.1*).

Table 10.1 Comparison of the HKAQO and Air Quality Monitoring Results

| Monitoring Station | Corresponding ASR in EIA | HKAQO, $\mu\text{g m}^{-3}$ | Measured 24-hour TSP Monitoring Results, $\mu\text{g m}^{-3}$ (a) (b) | |
|--------------------|--------------------------|-----------------------------|---|---------|
| | | 24 hour (a) | Average | Range |
| AM1 | A1 | 260 | 73 | 65 - 79 |
| AM2 | A7 | 260 | 70 | 64 - 78 |

Notes:

(a) Only 24-hour TSP monitoring results were compared as there is no 1 hour TSP criterion in HKAQO.

(b) The average and range of data were calculated from the period between the commencement of the construction works and this reporting month.

The monitoring results show that the average and range of the 24-hour TSP levels recorded since the commencement of the construction works have been well below the 24-hour TSP criterion in the HKAQO. Recommended mitigation measures in *Section 3.7.1.1* of EIA have been implemented throughout the construction period and were considered effective.

10.2 WASTE MANAGEMENT

The estimated amount of waste generated from the Project and the cumulative quantities of waste generated up to this reporting month are presented in *Table 10.2*. The amount of inert C&D material sent to public fills is higher than the estimated amount in the EIA. With reference to the C&D Material Assessment (Contractor's General Submission (CSF) No.: DC200803/CSF/SAF/060026/A), the difference in quantities is mainly due to the differences in excavation depths and the excavation methods in the Contract Works and that assumed in the Reference Design. Recommended mitigation measures in *Sections 7.5.1.1* to *7.5.1.9* of the EIA will continue to be implemented during the construction stage.

Table 10.2 *Quantity of Amount of C&D Materials, General Wastes and Chemical Wastes Actually Generated and Estimated in the EIA and C&D Material Assessment*

| Type of Material | Estimated Amount of Public Fill and Construction Waste in the EIA (inert & non-inert) | Estimated Amount of Public Fill and Construction Waste in C&D Material Assessment (CSF No.: DC200803/CSF/SAF/060026/A) ^(c) | Accumulated Actual Amount of Public Fill and Construction Waste Recorded ^(a) ^(b) (inert & non-inert) |
|--|---|---|--|
| Amount of C&D Materials Arising | 61,489.00 m ³ | 77,600.00 m ³ | 126,774.69 m ³ |
| Amount of C&D Materials Reused on other site | - | - | 3,163.89 m ³ |
| Amount of C&D Materials Reused on site | 14,926.00 m ³ | 18,000.00 m ³ | 24,032.78 m ³ |
| Amount of C&D Materials Sent to Fill Banks | 46,563.00 m ³ | 59,600.00 m ³ | 99,577.70 m ³ |
| General Refuse Small | - | - | 1,817.98 tonnes |
| Chemical Waste Small | - | - | 810.00 L |

Notes:

(a) The actual amount of C&D Materials has been recorded since the commencement of construction works.

(b) The density of soil and rock (bulked) is 1.8 tonnes/m³.

(c) The estimated amount of C&D material generated from the Contract Works was revised in the C&D Material Assessment and submitted to the SO on 9 September 2010 (CSF No.: DC200803/CSF/SAF/060026/A) because of the new plant & facility layout.

10.3

CONCLUSION OF THE REVIEW

The EIA predictions and monitoring results since the commencement of the construction works have been reviewed. The EIA concluded that the Project would not cause adverse impacts to the environment, and monitoring results have also confirmed that so far. Mitigation measures recommended in the EP, EIA and EM&A Manual will continue to be implemented throughout the construction phase of the Project.

This EM&A Report presents the EM&A programme undertaken during the reporting period from 1 to 31 July 2013 in accordance with EM&A Manual and requirements of EP (EP-321/2008/A).

No exceedance of Action and Limit Levels of 24-hour TSP and 1-hour TSP was recorded at the monitoring stations during the reporting period.

Monthly landscape and visual monitoring was conducted in the reporting period. Most of the necessary landscape and visual mitigation measures recommended in the EIA Report were implemented by the Contractor. Follow-up actions are required by the Contractor to improve protection of the retained or to-be transplanted trees.

No non-compliance event was recorded during the reporting period.

No complaint and summons/prosecution was received during the reporting period.

The ET will keep track of the EM&A programme to ensure compliance of environmental requirements and the proper implementation of all the necessary mitigation measures in the coming periods.

Annex A

Location of Project

PROPOSED FACILITIES AND BUILDINGS

SECTION 1 INLET PUMPING STATION AND PRELIMINARY TREATMENT WORKS

- 1 INLET CHAMBER
- 2 COARSE SCREENS AND INLET PUMPING STATION
- 3 FINE SCREEN CHANNELS
- 4 GRIT CHAMBERS
- 5 INLET FLOWMETER CHAMBER
- 6 PTW MCC ROOM

- 7 BLOWER ROOM
- 8 SCREENING SKIP HOUSE
- 9 ODOR DUCT SUPPORTING BRIDGE
- 10 SEPTIC WASTE RECEPTION STATION
- 11 WEIGHBRIDGE
- 12 ELECTRICAL BUILDING 1

- 13 ADMINISTRATION BUILDING
- 14 INLET CHAMBERS
- 15 PAYMENT FLOWMETER CHAMBER
- 16 CEPT INLET CHAMBER

SECTION 2 CEPT TANKS UV DISINFECTION

- 17 CEPT TANKS
- 18 UV DISINFECTION CHANNELS
- 19 REUSE WATER PUMP ROOM
- 20 ELECTRICAL BUILDING 3
- 21 ELECTRICAL BUILDING 2
- 22 OUTFALL PUMPING STATION CONNECTION CHAMBER
- 23 CHEMICAL BUILDING

SECTION 3 SLUDGE TREATMENT & HANDLING AND ODOUR CONTROL

- 24 SLUDGE DEMATERING BUILDING
- 25 DEODORISATION UNITS (B)
- 26 SLUDGE SKIP STORAGE BUILDING
- 27 SLUDGE SKIP LOADING AREA
- 28 DEODORISATION UNITS (A)

SECTION 4 EXISTING BUILDINGS TO BE DEMOLISHED

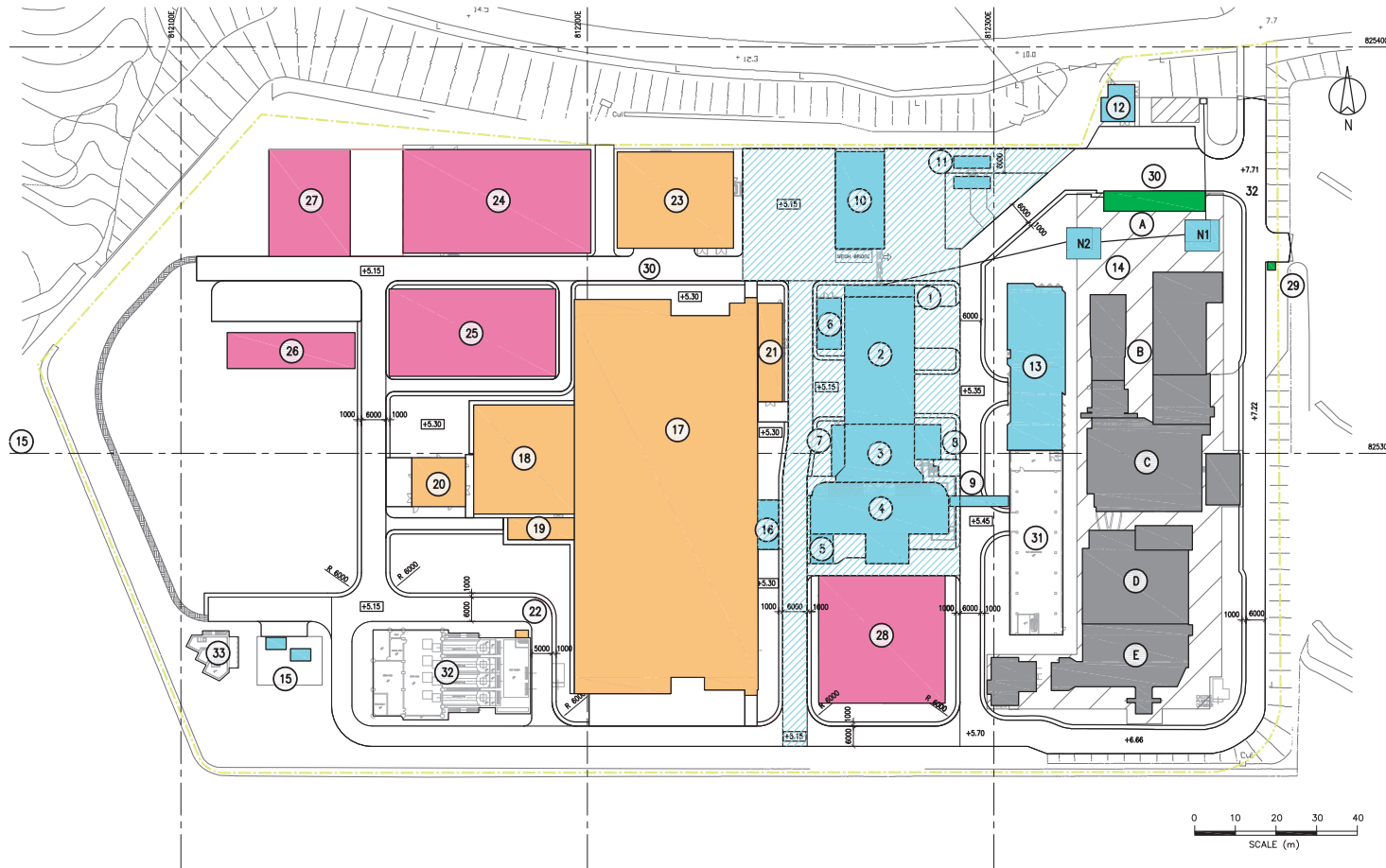
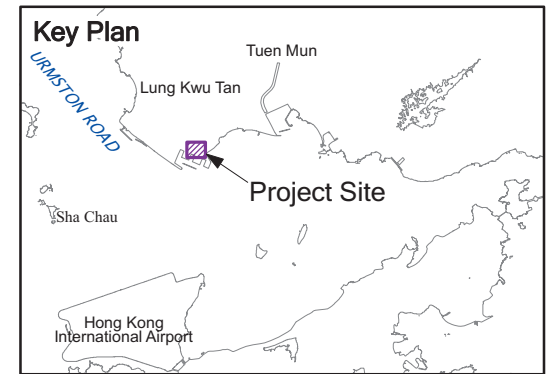
- A ADMINISTRATION BUILDING
- B INLET SCREW PUMPING STATION AND MOTOR HOUSE
- C COARSE SCREENS
- D BLOWER HOUSE AND GRIT CHANNELS
- E FINE SCREEN CHANNELS AND FLOWMETER CHAMBER

SECTION 5 EXTERNAL WORKS

- 29 GATE HOUSE
- 30 CAR PARK

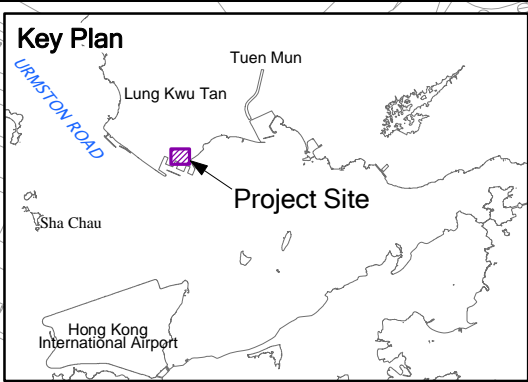
EXISTING BUILDING TO BE RETAINED

- 31 EXISTING SOLID HANDLING BUILDING
- 32 EXISTING OUTFALL PUMPING STATION
- 33 EXISTING TERMINAL MANHOLE

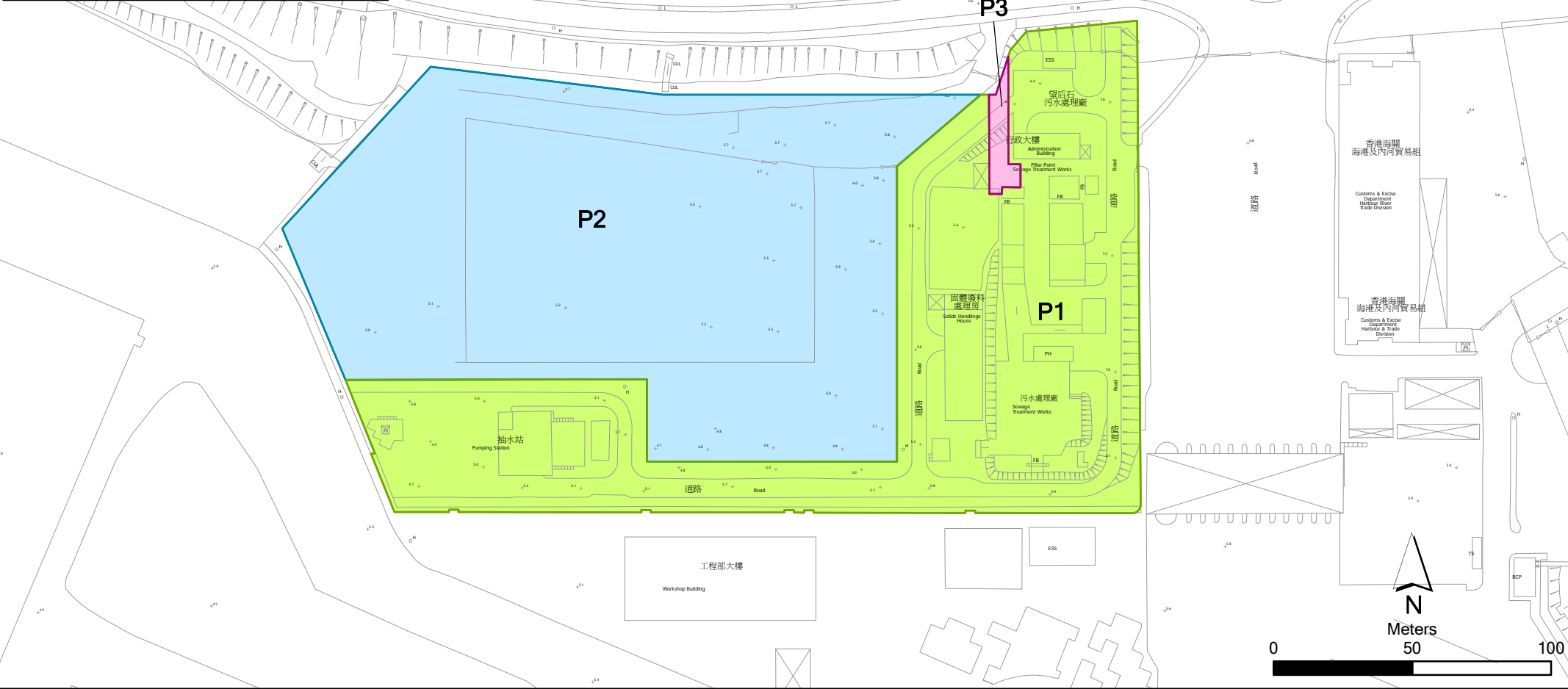


Annex B

Works Location



P1 & P3 - Works Areas within Existing PPSTW Facilities
P2 - Open Area for Construction of New Facilities at PPSTW



Annex B

Location of Works Areas

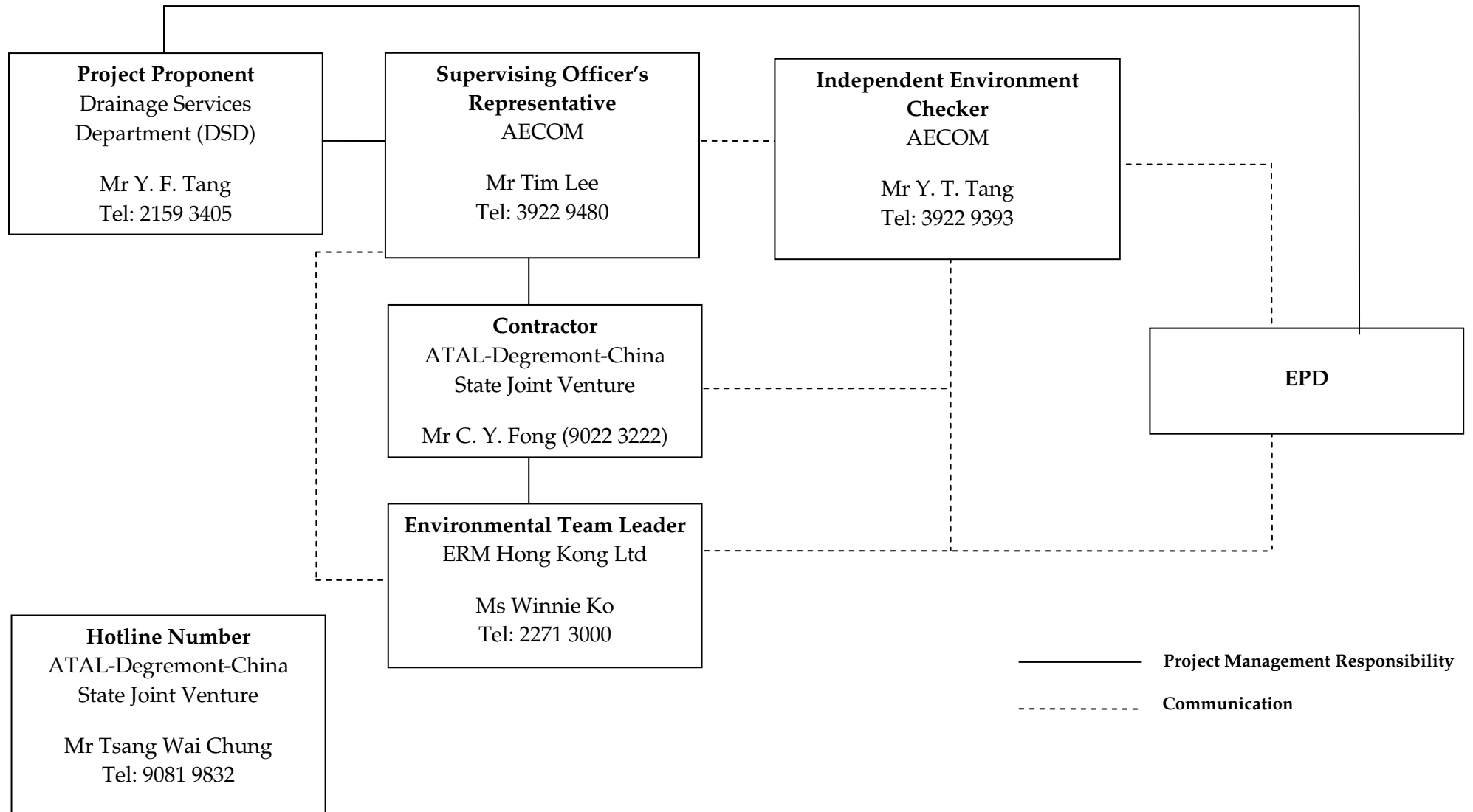
File: 0119806_location of works.mxd
Date: 15/12/2010

Environmental Resources Management

Annex C

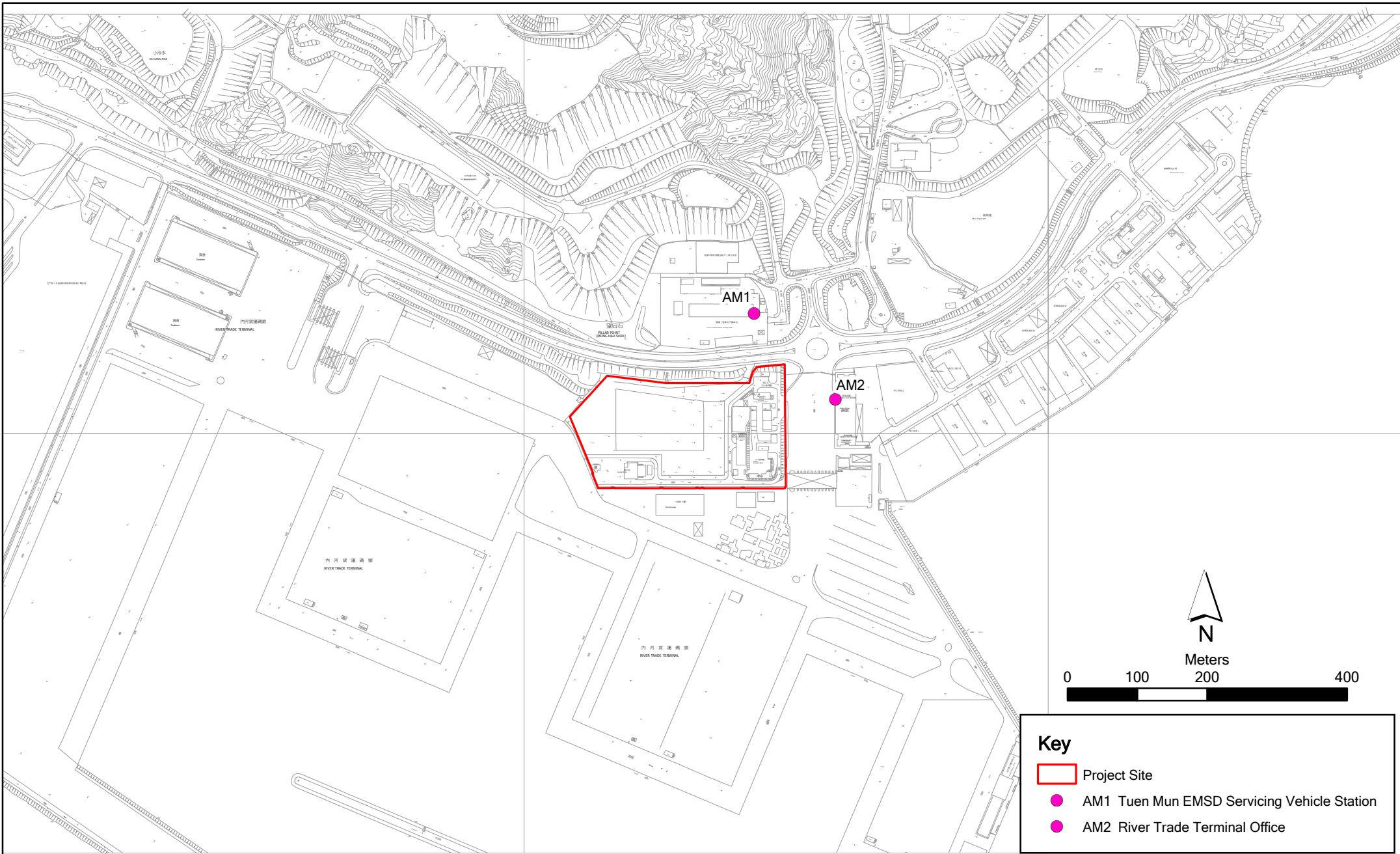
Project Organization Chart with Contact Details

Project Organization During Construction Phase (with contact details)



Annex D

Locations of Air Quality Monitoring Stations



Key

- Project Site
- AM1 Tuen Mun EMSD Servicing Vehicle Station
- AM2 River Trade Terminal Office

Annex D

Contract No. DC/2008/03 Design, Build and Operate of Pillar Point Sewage Treatment Works

File: 0119806_Site Boundary.mxd
Date: 15/12/2010

**Environmental
Resources
Management**





AM1 – Tuen Mun EMSD Servicing Vehicle Station



AM2 - River Trade Terminal Office

Annex E

Monitoring Schedule of Reporting Month and Next Month

**Contract No. DC/2008/03 - Design, Build and Operate Pillar Point Sewage Treatment Works
(Tuen Mun EMSD Servicing Vehicle Station - AM1 & River Trade Terminal Office - AM2)
July 2013**

| Sunday | Monday | Tuesday | Wednesday | Thursday | Friday | Saturday |
|--------|-----------------------|-----------------------|-----------------------|-----------------------|-----------------------|----------|
| | 01-Jul | 02-Jul | 03-Jul | 04-Jul | 05-Jul | 06-Jul |
| | Public Holiday | | 3X1-hr & 1X 24-hr TSP | | | |
| 07-Jul | 08-Jul | 09-Jul | 10-Jul | 11-Jul | 12-Jul | 13-Jul |
| | | 3X1-hr & 1X 24-hr TSP | | | | |
| 14-Jul | 15-Jul | 16-Jul | 17-Jul | 18-Jul | 19-Jul | 20-Jul |
| | 3X1-hr & 1X 24-hr TSP | | | | 3X1-hr & 1X 24-hr TSP | |
| 21-Jul | 22-Jul | 23-Jul | 24-Jul | 25-Jul | 26-Jul | 27-Jul |
| | | | | 3X1-hr & 1X 24-hr TSP | | |
| 28-Jul | 29-Jul | 30-Jul | 31-Jul | | | |
| | | | 3X1-hr & 1X 24-hr TSP | | | |

**Contract No. DC/2008/03 - Design, Build and Operate Pillar Point Sewage Treatment Works
(Tuen Mun EMSD Servicing Vehicle Station - AM1 & River Trade Terminal Office - AM2)
August 2013**

| Sunday | Monday | Tuesday | Wednesday | Thursday | Friday | Saturday |
|--------|-----------------------|-----------------------|-----------------------|-----------------------|-----------------------|----------|
| | | | | 01-Aug | 02-Aug | 03-Aug |
| | | | | | | |
| 04-Aug | 05-Aug | 06-Aug | 07-Aug | 08-Aug | 09-Aug | 10-Aug |
| | | 3X1-hr & 1X 24-hr TSP | | | | |
| 11-Aug | 12-Aug | 13-Aug | 14-Aug | 15-Aug | 16-Aug | 17-Aug |
| | 3X1-hr & 1X 24-hr TSP | | | | 3X1-hr & 1X 24-hr TSP | |
| 18-Aug | 19-Aug | 20-Aug | 21-Aug | 22-Aug | 23-Aug | 24-Aug |
| | | | | 3X1-hr & 1X 24-hr TSP | | |
| 25-Aug | 26-Aug | 27-Aug | 28-Aug | 29-Aug | 30-Aug | 31-Aug |
| | | | 3X1-hr & 1X 24-hr TSP | | | |
| | | | | | | |

Annex F

Calibration Reports for HVSs

TSP Monitoring Equipment

| Monitoring Station ID | Location | Monitoring Equipment | | Last Calibration Date | Next Calibration Date |
|------------------------------|---|-----------------------------|-------------------------|------------------------------|------------------------------|
| <i>24-hr and 1-hr TSP</i> | | HVS | Calibrator | | |
| AM1 | Tuen Mun EMSD Vehicle Servicing Station | GMW GS-2310 (S/N 7580) | CM-AIR-43 (S/N 0438320) | 03 July 2013 | 03 September 2013 |
| AM2 | River Trade Terminal Office | GMW GS-2310 (S/N 1252) | CM-AIR-43 (S/N 0438320) | 03 July 2013 | 03 September 2013 |

High-Volume TSP Sampler
5-Point Calibration Record

Location : EMSD
 Calibrated by : K.T.Ho
 Date : 03/07/2013

Sampler

Model : GMWS-2310 ACCU-VOL
 Serial Number : S/N 7580

Calibration Office and Standard Calibration Relationship

Serial Number : 2323
 Service Date : 26 Dec 2012
 Slope (m) : 2.09107
 Intercept (b) : -0.02838
 Correlation Coefficient(r) : 0.99996

Standard Condition

Pstd (hpa) : 1013
 Tstd (K) : 298.18

Calibration Condition

Pa (hpa) : 1008
 Ta(K) : 304

| Resistance Plate | dH [green liquid] (inch water) | Z | X=Qstd (cubic meter/min) | IC | Y |
|------------------|-----------------------------------|--------|-----------------------------|----|------|
| 1 18 holes | 11.4 | 3.335 | 1.608 | 55 | 54.3 |
| 2 13 holes | 9.6 | 3.060 | 1.477 | 48 | 47.4 |
| 3 10 holes | 7.4 | 2.687 | 1.298 | 41 | 40.5 |
| 4 7 holes | 4.6 | 2.118 | 1.027 | 30 | 29.6 |
| 5 5 holes | 2.7 | 1.6229 | 0.790 | 20 | 19.8 |

Sampler Calibration Relationship

Slope(m):41.458 Intercept(b): -13.087 Correlation Coefficient(r): 0.9992

Checked by: Magnum Fan

Date: 05/07/2013

High-Volume TSP Sampler
5-Point Calibration Record

Location : River Trade
 Calibrated by : P.F.Yeung
 Date : 03/07/2013

Sampler

Model : GMWS-2310 ACCU-VOL
 Serial Number : S/N 1252

Calibration Office and Standard Calibration Relationship

Serial Number : 2323
 Service Date : 26 Dec 2012
 Slope (m) : 2.09107
 Intercept (b) : -0.02838
 Correlation Coefficient(r) : 0.99996

Standard Condition

Pstd (hpa) : 1013
 Tstd (K) : 298.18

Calibration Condition

Pa (hpa) : 1008
 Ta(K) : 304

| Resistance Plate | dH [green liquid] (inch water) | Z | X=Qstd (cubic meter/min) | IC | Y |
|------------------|-----------------------------------|-------|-----------------------------|----|------|
| 1 18 holes | 11.4 | 3.335 | 1.608 | 66 | 65.2 |
| 2 13 holes | 9.4 | 3.028 | 1.462 | 58 | 57.3 |
| 3 10 holes | 7.6 | 2.723 | 1.317 | 50 | 49.4 |
| 4 7 holes | 4.7 | 2.141 | 1.038 | 37 | 36.5 |
| 5 5 holes | 2.6 | 1.593 | 0.775 | 23 | 22.7 |

Sampler Calibration Relationship

Slope(m): 50.408 Intercept(b): -20.267 Correlation Coefficient(r): 0.9996

Checked by: Magnum Fan

Date: 05/07/2013



TISCH ENVIRONMENTAL, INC.
 145 SOUTH MIAMI AVE.
 VILLAGE OF CLEVELAND, OH 45002
 513.467.9000
 877.263.7610 TOLL FREE
 513.467.9009 FAX
 WWW.TISCH-ENV.COM

AIR POLLUTION MONITORING EQUIPMENT

ORIFICE TRANSFER STANDARD CERTIFICATION WORKSHEET TE-5025A

Date - Dec 26, 2012 Rootsmeter S/N 0438320 Ta (K) - 295
 Operator Tisch Orifice I.D. - 2323 Pa (mm) - 753.11

| PLATE OR Run # | VOLUME START (m3) | VOLUME STOP (m3) | DIFF VOLUME (m3) | DIFF TIME (min) | METER | ORFICE |
|----------------|-------------------|------------------|------------------|-----------------|--------------|----------------|
| | | | | | DIFF Hg (mm) | DIFF H2O (in.) |
| 1 | NA | NA | 1.00 | 1.4440 | 3.2 | 2.00 |
| 2 | NA | NA | 1.00 | 1.0240 | 6.4 | 4.00 |
| 3 | NA | NA | 1.00 | 0.9120 | 8.0 | 5.00 |
| 4 | NA | NA | 1.00 | 0.8720 | 8.8 | 5.50 |
| 5 | NA | NA | 1.00 | 0.7200 | 12.8 | 8.00 |

DATA TABULATION

| Vstd | (x axis) Qstd | (y axis) | Va | (x axis) Qa | (y axis) |
|------------------------------------|---------------|----------|---------------------------|-------------|----------|
| 0.9967 | 0.6902 | 1.4149 | 0.9957 | 0.6896 | 0.8851 |
| 0.9925 | 0.9693 | 2.0010 | 0.9915 | 0.9683 | 1.2517 |
| 0.9903 | 1.0858 | 2.2372 | 0.9893 | 1.0847 | 1.3995 |
| 0.9893 | 1.1345 | 2.3464 | 0.9883 | 1.1334 | 1.4678 |
| 0.9840 | 1.3666 | 2.8299 | 0.9830 | 1.3652 | 1.7702 |
| Qstd slope (m) = 2.09107 | | | Qa slope (m) = 1.30939 | | |
| intercept (b) = -0.02838 | | | intercept (b) = -0.01775 | | |
| coefficient (r) = 0.99996 | | | coefficient (r) = 0.99996 | | |
| y axis = SQRT[H2O(Pa/760)(298/Ta)] | | | x axis = SQRT[H2O(Ta/Pa)] | | |

CALCULATIONS

$$Vstd = \text{Diff. Vol} [(Pa - \text{Diff. Hg}) / 760] (298 / Ta)$$

$$Qstd = Vstd / \text{Time}$$

$$Va = \text{Diff Vol} [(Pa - \text{Diff Hg}) / Pa]$$

$$Qa = Va / \text{Time}$$

For subsequent flow rate calculations:

$$Qstd = 1/m \{ [\text{SQRT}(H2O(Pa/760)(298/Ta))] - b \}$$

$$Qa = 1/m \{ [\text{SQRT} H2O(Ta/Pa)] - b \}$$

Annex G

24-hour and 1-hour TSP Monitoring Results

Annex G - 24-hour and 1-hour TSP Monitoring Results

1-hour TSP Monitoring Results

Station AM1

| Date | Start Time | Finish Time | Weather | TSP Concentration ($\mu\text{g}/\text{m}^3$) | Action Level ($\mu\text{g}/\text{m}^3$) | Limit Level ($\mu\text{g}/\text{m}^3$) | Site Conditions / Observations / Remarks | Temperature ($^{\circ}\text{C}$) | Wind Speed * (m/s) | Sampler ID | Filter ID |
|------------|------------|-------------|---------|--|---|--|--|------------------------------------|--------------------|------------|-----------|
| 03-07-2013 | 13:10 | 14:10 | Sunny | 96 | 343 | 500 | Construction work in progress | 30.0 | * | 7580 | 7746 |
| | 14:10 | 15:10 | Sunny | 106 | 343 | 500 | Construction work in progress | 30.0 | * | 7580 | 7747 |
| | 15:10 | 16:10 | Sunny | 107 | 343 | 500 | Construction work in progress | 30.0 | * | 7580 | 7748 |
| 09-07-2013 | 13:10 | 14:10 | Sunny | 100 | 383 | 500 | Construction work in progress | 29.0 | * | 7580 | 7785 |
| | 14:10 | 15:10 | Sunny | 96 | 383 | 500 | Construction work in progress | 29.0 | * | 7580 | 7786 |
| | 15:10 | 16:10 | Sunny | 102 | 383 | 500 | Construction work in progress | 29.0 | * | 7580 | 7787 |
| 15-07-2013 | 13:10 | 14:10 | Cloudy | 118 | 343 | 500 | Construction work in progress | 27.0 | * | 7580 | 7836 |
| | 14:10 | 15:10 | Cloudy | 107 | 343 | 500 | Construction work in progress | 27.0 | * | 7580 | 7835 |
| | 15:10 | 16:10 | Cloudy | 110 | 343 | 500 | Construction work in progress | 27.0 | * | 7580 | 7799 |
| 19-07-2013 | 13:10 | 14:10 | Fine | 125 | 343 | 500 | Construction work in progress | 27.0 | * | 7580 | 7855 |
| | 14:10 | 15:10 | Fine | 103 | 343 | 500 | Construction work in progress | 27.0 | * | 7580 | 7856 |
| | 15:10 | 16:10 | Fine | 110 | 343 | 500 | Construction work in progress | 27.0 | * | 7580 | 7857 |
| 25-07-2013 | 13:10 | 14:10 | Rainy | 106 | 343 | 500 | Construction work in progress | 26.0 | * | 7580 | 7873 |
| | 14:10 | 15:10 | Rainy | 100 | 343 | 500 | Construction work in progress | 26.0 | * | 7580 | 7874 |
| | 15:10 | 16:10 | Sunny | 104 | 343 | 500 | Construction work in progress | 26.0 | * | 7580 | 7875 |
| 31-07-2013 | 13:10 | 14:10 | Sunny | 121 | 343 | 500 | Construction work in progress | 30.0 | * | 7580 | 7896 |
| | 14:10 | 15:10 | Sunny | 83 | 343 | 500 | Construction work in progress | 30.0 | * | 7580 | 8001 |
| | 15:10 | 16:10 | Sunny | 106 | 343 | 500 | Construction work in progress | 30.0 | * | 7580 | 8002 |
| | | | | Min. | 83 | | | | | | |
| | | | | Max. | 125 | | | | | | |
| | | | | Average | 106 | | | | | | |

* Wind Speed data is presented in the Meteorological Data table

Annex G - 24-hour and 1-hour TSP Monitoring Results

1-hour TSP Monitoring Results

Station AM2

| Date | Start Time | Finish Time | Weather | TSP Concentration ($\mu\text{g}/\text{m}^3$) | Action Level ($\mu\text{g}/\text{m}^3$) | Limit Level ($\mu\text{g}/\text{m}^3$) | Site Conditions / Observations / Remarks | Temperature ($^{\circ}\text{C}$) | Wind Speed * (m/s) | Sampler ID | Filter ID |
|------------|------------|-------------|----------------|--|---|--|--|------------------------------------|--------------------|------------|-----------|
| 03-07-2013 | 13:00 | 14:00 | Sunny | 98 | 383 | 500 | Construction work in progress | 30.0 | * | 1252 | 7742 |
| | 14:00 | 15:00 | Sunny | 97 | 383 | 500 | Construction work in progress | 30.0 | * | 1252 | 7743 |
| | 15:00 | 16:00 | Sunny | 105 | 383 | 500 | Construction work in progress | 30.0 | * | 1252 | 7744 |
| 09-07-2013 | 13:00 | 14:00 | Sunny | 106 | 383 | 500 | Construction work in progress | 29.0 | * | 1252 | 7781 |
| | 14:00 | 15:00 | Sunny | 99 | 383 | 500 | Construction work in progress | 29.0 | * | 1252 | 7782 |
| | 15:00 | 16:00 | Sunny | 99 | 383 | 500 | Construction work in progress | 29.0 | * | 1252 | 7783 |
| 15-07-2013 | 13:00 | 14:00 | Cloudy | 122 | 383 | 500 | Construction work in progress | 27.0 | * | 1252 | 7798 |
| | 14:00 | 15:00 | Cloudy | 112 | 383 | 500 | Construction work in progress | 27.0 | * | 1252 | 7832 |
| | 15:00 | 16:00 | Cloudy | 114 | 383 | 500 | Construction work in progress | 27.0 | * | 1252 | 7833 |
| 19-07-2013 | 13:00 | 14:00 | Fine | 105 | 383 | 500 | Construction work in progress | 27.0 | * | 1252 | 7851 |
| | 14:00 | 15:00 | Fine | 117 | 383 | 500 | Construction work in progress | 27.0 | * | 1252 | 7852 |
| | 15:00 | 16:00 | Fine | 117 | 383 | 500 | Construction work in progress | 27.0 | * | 1252 | 7853 |
| 25-07-2013 | 13:00 | 14:00 | Rainy | 94 | 383 | 500 | Construction work in progress | 26.0 | * | 1252 | 7869 |
| | 14:00 | 15:00 | Rainy | 95 | 383 | 500 | Construction work in progress | 26.0 | * | 1252 | 7870 |
| | 15:00 | 16:00 | Rainy | 78 | 383 | 500 | Construction work in progress | 26.0 | * | 1252 | 7871 |
| 31-07-2013 | 13:00 | 14:00 | Sunny | 83 | 383 | 500 | Construction work in progress | 30.0 | * | 1252 | 7892 |
| | 14:00 | 15:00 | Sunny | 102 | 383 | 500 | Construction work in progress | 30.0 | * | 1252 | 7893 |
| | 15:10 | 16:10 | Sunny | 87 | 383 | 500 | Construction work in progress | 30.0 | * | 1252 | 7894 |
| | | | Min. | 78 | | | | | | | |
| | | | Max. | 122 | | | | | | | |
| | | | Average | 102 | | | | | | | |

* Wind Speed data is presented in the Meteorological Data table

Annex G - 24-hour and 1-hour TSP Monitoring Results

24-hour TSP Monitoring Results

Station AM1

| Start | | Finish | | Weather | Filter Weight (g) | | Elapsed Time Reading | | Sampling Time (hrs) | Flow Rate (m ³ /min) | | | TSP Conc. (µg/m ³) | Action Level (µg/m ³) | Limit Level (µg/m ³) | Observations / Remarks | Sampler ID | Filter ID |
|------------|-------|------------|-------|---------|-------------------|--------|----------------------|----------|---------------------|---------------------------------|-------|---------|--------------------------------|-----------------------------------|----------------------------------|-------------------------------|------------|-----------|
| Date | Time | Date | Time | | Initial | Final | Initial | Final | | Initial | Final | Average | | | | | | |
| 03-07-2013 | 16:10 | 04-07-2013 | 16:10 | Sunny | 2.9022 | 3.0400 | 14681.18 | 14705.18 | 24 | 1.23 | 1.23 | 1.23 | 78 | 183 | 260 | Construction work in progress | 7580 | 7749 |
| 09-07-2013 | 16:10 | 10-07-2013 | 16:10 | Sunny | 2.8655 | 3.0012 | 14708.18 | 14732.18 | 24 | 1.23 | 1.23 | 1.23 | 77 | 183 | 260 | Construction work in progress | 7580 | 7788 |
| 15-07-2013 | 16:10 | 16-07-2013 | 16:10 | Cloudy | 2.8175 | 2.9550 | 14735.18 | 14759.18 | 24 | 1.23 | 1.23 | 1.23 | 78 | 183 | 260 | Construction work in progress | 7580 | 7837 |
| 19-07-2013 | 16:10 | 20-07-2013 | 16:10 | Fine | 2.8406 | 2.9611 | 14762.18 | 14786.18 | 24 | 1.23 | 1.23 | 1.23 | 68 | 183 | 260 | Construction work in progress | 7580 | 7858 |
| 25-07-2013 | 16:10 | 26-07-2013 | 16:10 | Rainy | 2.8181 | 2.9338 | 14789.18 | 14813.18 | 24 | 1.23 | 1.23 | 1.23 | 65 | 183 | 260 | Construction work in progress | 7580 | 7876 |
| 31-07-2013 | 16:10 | 01-08-2013 | 16:10 | Sunny | 2.7859 | 2.9110 | 14816.18 | 14840.18 | 24 | 1.23 | 1.23 | 1.23 | 71 | 183 | 260 | Construction work in progress | 7580 | 8003 |
| | | | | | | | | | | | | | Min. | 65 | | | | |
| | | | | | | | | | | | | | Max. | 78 | | | | |
| | | | | | | | | | | | | | Average | 73 | | | | |

24-hour TSP Monitoring Results

Station AM2

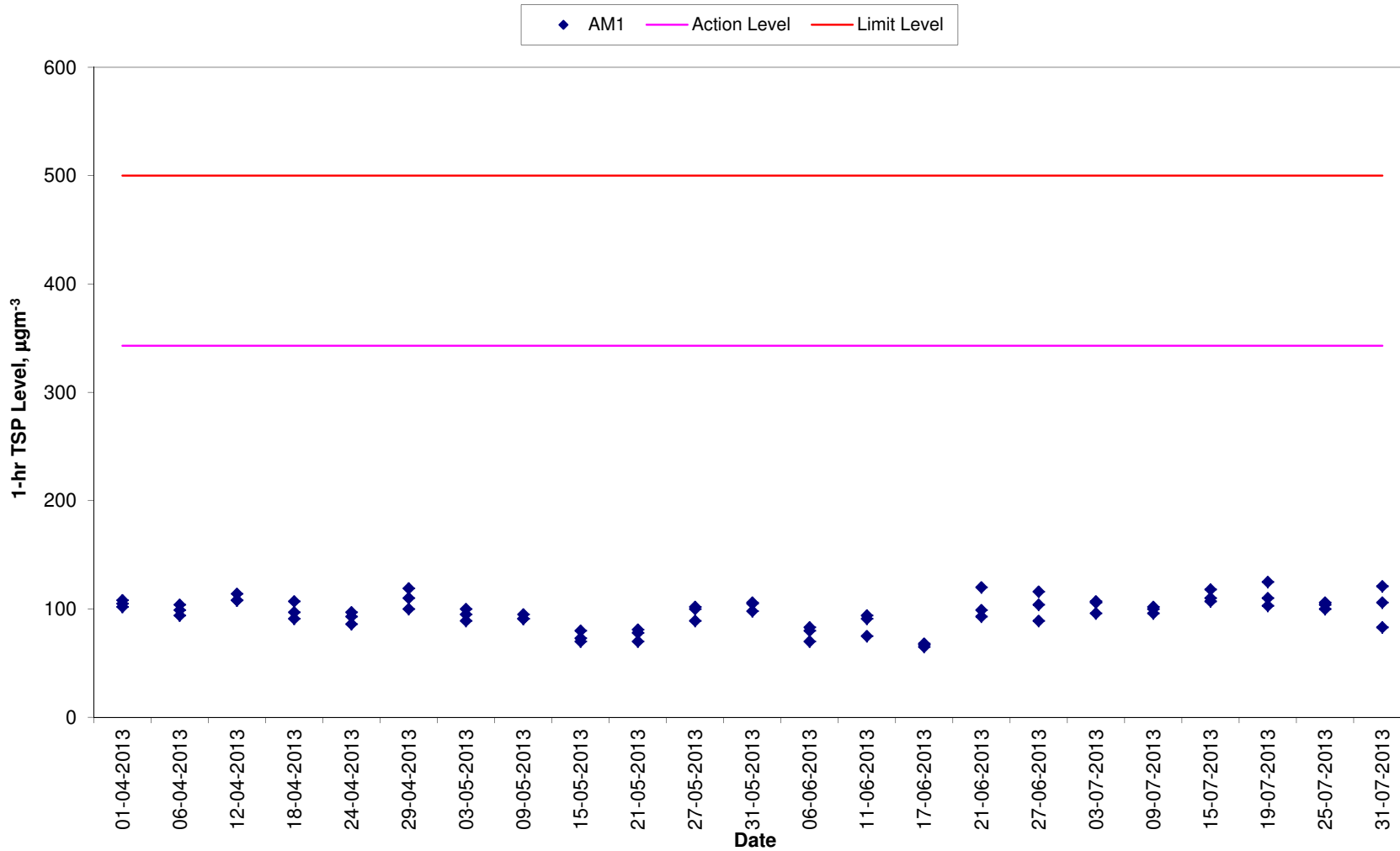
| Start | | Finish | | Weather | Filter Weight (g) | | Elapsed Time Reading | | Sampling Time (hrs) | Flow Rate (m ³ /min) | | | TSP Conc. (µg/m ³) | Action Level (µg/m ³) | Limit Level (µg/m ³) | Observations / Remarks | Sampler ID | Filter ID |
|------------|-------|------------|-------|---------|-------------------|--------|----------------------|----------|---------------------|---------------------------------|-------|---------|--------------------------------|-----------------------------------|----------------------------------|-------------------------------|------------|-----------|
| Date | Time | Date | Time | | Initial | Final | Initial | Final | | Initial | Final | Average | | | | | | |
| 03-07-2013 | 16:00 | 04-07-2013 | 16:00 | Sunny | 2.8865 | 3.0147 | 22699.20 | 22723.20 | 24 | 1.24 | 1.24 | 1.24 | 72 | 192 | 260 | Construction work in progress | 1252 | 7745 |
| 09-07-2013 | 16:00 | 10-07-2013 | 16:00 | Sunny | 2.8706 | 2.9849 | 22726.20 | 22750.20 | 24 | 1.24 | 1.24 | 1.24 | 64 | 192 | 260 | Construction work in progress | 1252 | 7784 |
| 15-07-2013 | 16:00 | 16-07-2013 | 16:00 | Cloudy | 2.8321 | 2.9721 | 22753.20 | 22777.20 | 24 | 1.24 | 1.24 | 1.24 | 78 | 192 | 260 | Construction work in progress | 1252 | 7834 |
| 19-07-2013 | 16:00 | 20-07-2013 | 16:00 | Fine | 2.8115 | 2.9349 | 22780.20 | 22804.20 | 24 | 1.24 | 1.24 | 1.24 | 69 | 192 | 260 | Construction work in progress | 1252 | 7854 |
| 25-07-2013 | 16:00 | 26-07-2013 | 16:00 | Rainy | 2.8220 | 2.9521 | 22807.20 | 22831.20 | 24 | 1.24 | 1.24 | 1.24 | 73 | 192 | 260 | Construction work in progress | 1252 | 7872 |
| 31-07-2013 | 16:00 | 01-08-2013 | 16:00 | Sunny | 2.8221 | 2.9400 | 22834.20 | 22858.20 | 24 | 1.24 | 1.24 | 1.24 | 66 | 192 | 260 | Construction work in progress | 1252 | 7895 |
| | | | | | | | | | | | | | Min. | 64 | | | | |
| | | | | | | | | | | | | | Max. | 78 | | | | |
| | | | | | | | | | | | | | Average | 70 | | | | |

Meteorological Data Extracted from the Hong Kong Observatory

| Date | Weather | Tuen Mun Station | | | | |
|------------|---------|------------------------------|-------------------------------|---------------------|---------------------------|----------------|
| | | Average Air Temperature (°C) | Average Relative Humidity (%) | Total Rainfall (mm) | Average Wind Speed (km/h) | Wind Direction |
| 03-07-2013 | Sunny | 30.0 | 64-87 | Trace | 18.0 | SE |
| 04-07-2013 | Sunny | 30.0 | 62-85 | Trace | 12.0 | SE-E |
| 09-07-2013 | Sunny | 29.0 | 63-86 | Trace | 12.0 | SE |
| 10-07-2013 | Sunny | 29.0 | 69-96 | 14.2 | 12.0 | SE-NE |
| 15-07-2013 | Cloudy | 27.0 | 91-98 | 44.9 | 15.0 | N/A |
| 16-07-2013 | Cloudy | 26.0 | 87-98 | 9.0 | 18.0 | SE-W |
| 19-07-2013 | Rainy | 27.0 | 85-98 | 12.0 | 10.0 | N/A |
| 20-07-2013 | Rainy | 27.0 | 81-98 | 12.0 | 12.0 | SE |
| 25-07-2013 | Sunny | 26.0 | 93-99 | 57.7 | 15.0 | SE |
| 26-07-2013 | Fine | 26.5 | 84-98 | 65.4 | 15.0 | SE |
| 31-07-2013 | Fine | 30.0 | 70-91 | 0.5 | 17.0 | E-SE |
| 01-08-2013 | Rainy | 29.0 | 75-96 | 4.5 | 13.0 | SE-N |

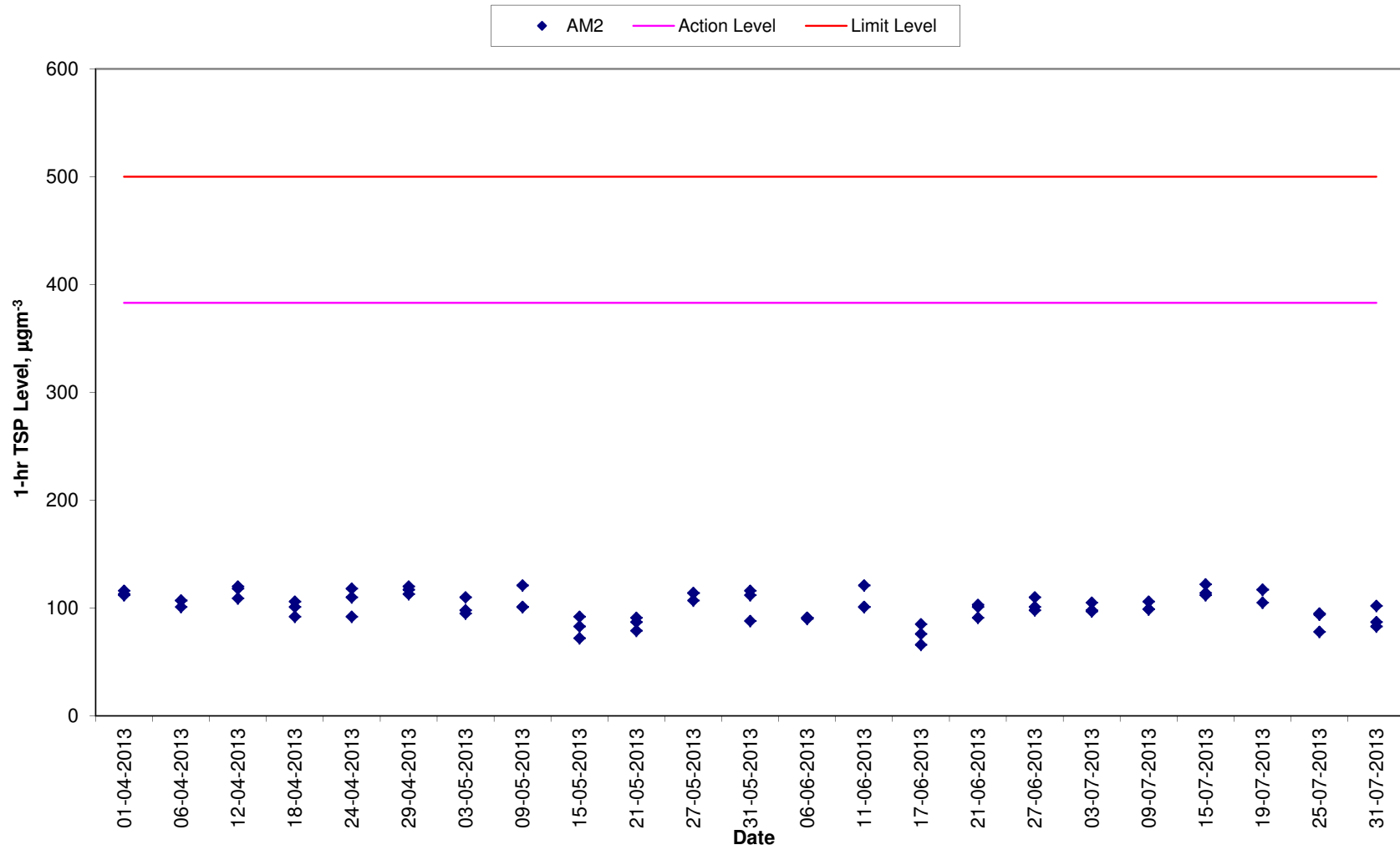
Annex G TSP Monitoring Results

1-hr TSP Levels for the Past 4 Months AM1 (Tuen Mun EMSD Vehicle Servicing Station)



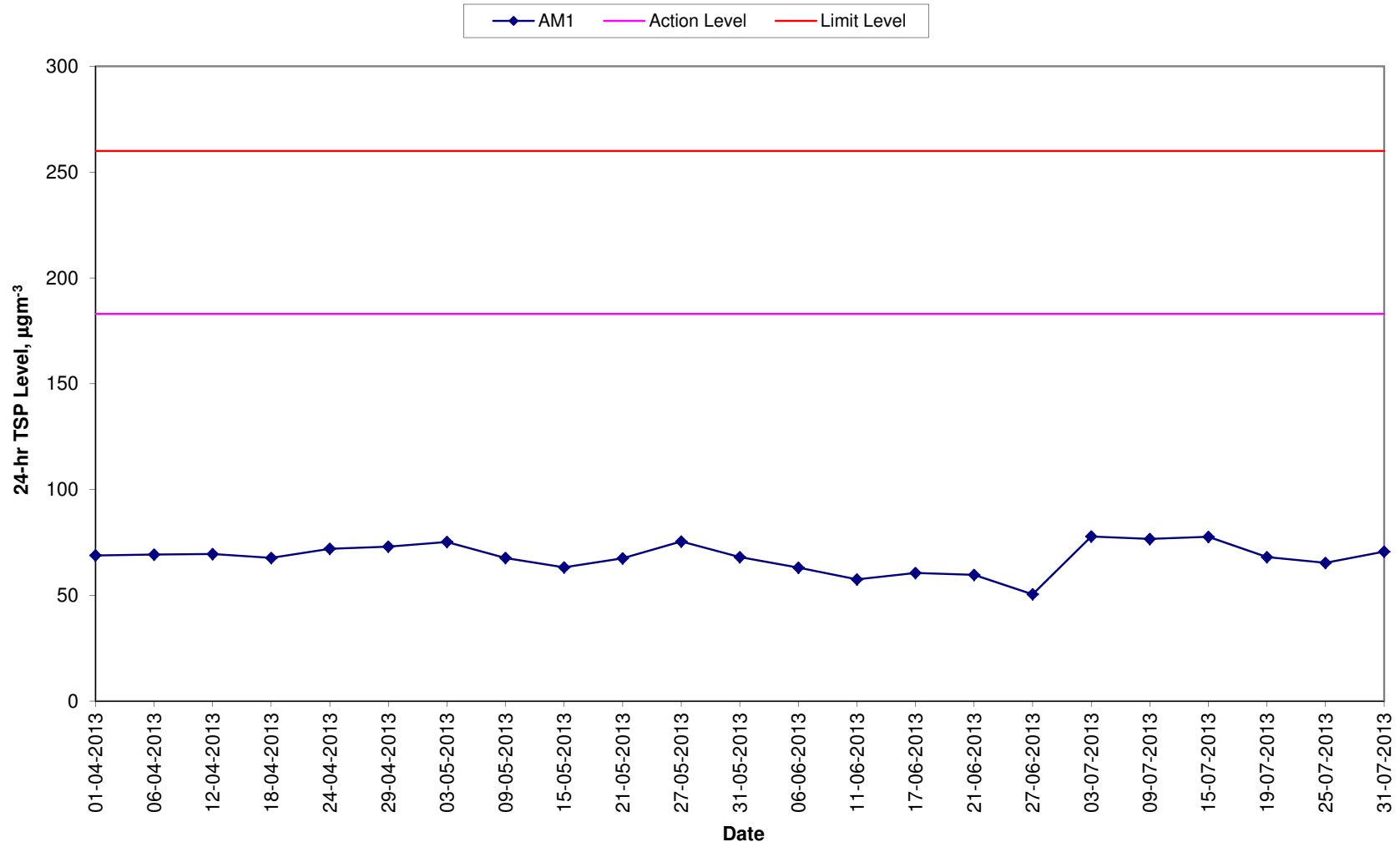
Annex G TSP Monitoring Results

1-hr TSP Levels for the Past 4 Months AM2 (River Trade Terminal Office)



Annex G TSP Monitoring Results

24-hr TSP Levels for the Past 4 Months AM1 (River Trade Terminal Office)



Annex G TSP Monitoring Results

24-hr TSP Levels for the Past 4 Months AM2 (River Trade Terminal Office)

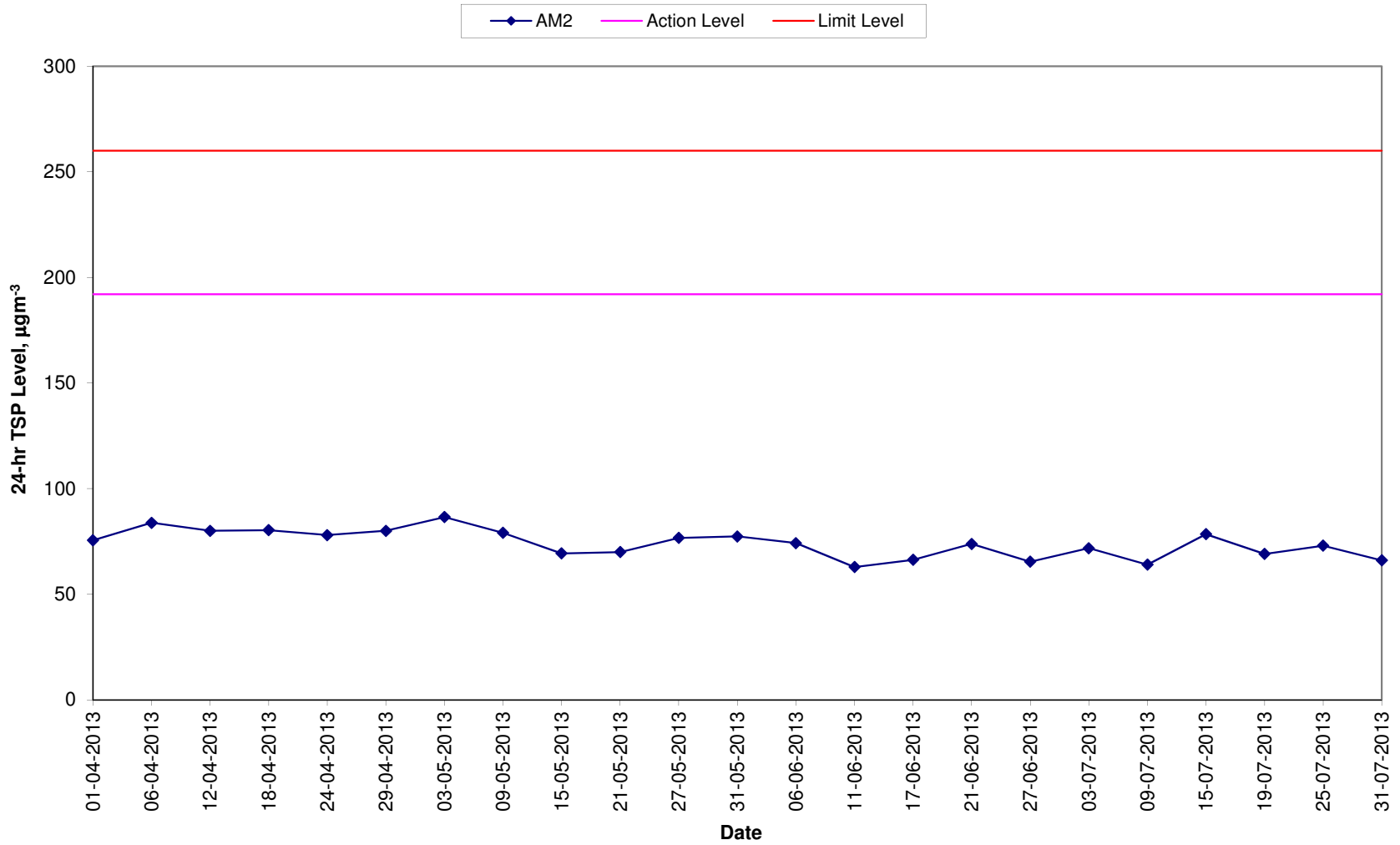


Table H1 *Event Action Plan for Air Quality Monitoring*

| Action Level/Limit Level | Environmental Team Leader (ETL) | Independent Environmental Checker (IEC) | Supervising Officer Representative (SOR) | Contractor |
|--|--|--|---|--|
| <i>Action Level</i> | | | | |
| Exceedance for one sample | <ul style="list-style-type: none"> Identify source, investigate the causes of complaint and propose remedial measures; Inform IEC and SOR; Repeat measurement to confirm findings; Increase monitoring frequency to daily. | <ul style="list-style-type: none"> Check monitoring data submitted by ET; Check Contractor’s working method. | <ul style="list-style-type: none"> Notify Contractor and DSD. | <ul style="list-style-type: none"> Rectify any unacceptable practice; Amend working methods if appropriate. |
| Exceedance for two or more consecutive samples | <ul style="list-style-type: none"> Identify source; Inform IEC and SOR; Advise the SOR on the effectiveness of the proposed remedial measures; Repeat measurements to confirm findings; Increase monitoring frequency to daily; Discuss with IEC and Contractor on remedial actions required; If exceedance continues, arrange meeting with IEC and SOR; If exceedance stops, cease additional monitoring. | <ul style="list-style-type: none"> Check monitoring data submitted by ET; Check Contractor’s working method; Discuss with ET and Contractor on possible remedial measures; Advise the ET on the effectiveness of the proposed remedial measures; Supervise Implementation of remedial measures. | <ul style="list-style-type: none"> Confirm receipt of notification of exceedance in writing; Notify Contractor and DSD; Ensure remedial measures properly implemented. | <ul style="list-style-type: none"> Submit proposals for remedial actions to IEC within three working days of notification; Implement the agreed proposals; Amend proposal if appropriate. |

| Action Level/Limit Level | Environmental Team Leader (ETL) | Independent Environmental Checker (IEC) | Supervising Officer Representative (SOR) | Contractor |
|--|---|---|---|---|
| <i>Limit Level</i> | | | | |
| Exceedance for one sample | <ul style="list-style-type: none"> Identify source, investigate the causes of exceedance and propose remedial measures; Inform IEC, SOR, DSD and EPD; Repeat measurement to confirm finding; Increase monitoring frequency to daily; Assess effectiveness of Contractor's remedial actions and keep IEC, EPD, DSD and SOR informed of the results. | <ul style="list-style-type: none"> Check monitoring data submitted by ET; Check Contractor's working method; Discuss with ET and Contractor on possible remedial measures; Advise the SOR on the effectiveness of the proposed remedial measures; Supervise implementation of remedial measures. | <ul style="list-style-type: none"> Confirm receipt of notification of exceedance in writing; Notify Contractor; Ensure remedial measures properly implemented. | <ul style="list-style-type: none"> Take immediate action to avoid further exceedance; Submit proposals for remedial actions to IEC within three working days of notification; Implement the agreed proposals; Amend proposal if appropriate. |
| Exceedance for two or more consecutive samples | <ul style="list-style-type: none"> Notify IEC, SOR, DSD and EPD; Identify source; Repeat measurement to confirm findings; Increase monitoring frequency to daily; Carry out analysis of Contractor's working procedures to determine possible mitigation to be implemented; Arrange meeting with IEC and SOR to discuss the remedial actions to be taken; Assess effectiveness of Contractor's remedial actions and keep IEC, EPD, DSD and SOR informed of the results; If exceedance stops, cease additional monitoring. | <ul style="list-style-type: none"> Discuss amongst SOR, ET, and Contractor on the potential remedial actions; Review Contractor's remedial actions whenever necessary to assure their effectiveness and advise the SOR accordingly; Supervise the implementation of remedial measures. | <ul style="list-style-type: none"> Confirm receipt of notification of exceedance in writing; Notify Contractor; In consolidation with the IEC, agree with the Contractor on the remedial measures to be implemented; Ensure remedial measures properly implemented; If exceedance continues, consider what portion of the work is responsible and instruct the Contractor to stop that portion of work until the exceedance is abated. | <ul style="list-style-type: none"> Take immediate action to avoid further exceedance; Submit proposals for remedial actions to IEC within three working days of notification; Implement the agreed proposals; Resubmit proposals if problem still not under control; Stop the relevant portion of works as determined by the SOR until the exceedance is abated. |

Annex I

Implementation Schedule of Mitigation Measures

Annex I Summary of Mitigation Measures Implementation Schedule

| Type of Impact | Environmental Protection Measures | Location/ Timing | Status |
|--|--|--|---|
| <i>Summary of Environmental Mitigation Measures in the EIA and EM&A Manual</i> | | | |
| <i>Construction Phase</i> | | | |
| Air Quality | Dust mitigation measures stipulated in <i>the Air Pollution Control (Construction Dust) Regulation</i> shall be incorporated to control Post emission. Notice shall be given to authority prior to commencing of work. | Work sites / during construction period | Notice of works commencement was submitted to EPD on 3 August 2010. |
| Water Quality | The practices outlined in ProPECC PN 1/94 Construction Site Drainage should be adopted. It is recommended to install perimeter channels in the works areas to intercept runoff as site boundary prior to the commencement of any earthwork. To prevent storm runoff from washing across exposed soil surfaces, intercepting channels should be provided. Drainage channels are also required to convey site runoff to sand/silt traps and oil interceptors. Provision of regular cleaning and maintenance can ensure the normal operation of these facilities throughout the construction period. Any practical options for the diversion and re-alignment of drainage should comply with both engineering and environmental requirements in order to ensure adequate hydraulic capacity of all drains. | Work site/During the construction period | <> |
| Water Quality | There is a need to apply to EPD for a discharge license under the WPCO for discharging effluent from the construction site. The discharge quality is required to meet the requirements specified in the discharge license. All the runoff and wastewater generated from the works areas should be treated so that it satisfies all the standards listed in the TM-DSS. Reuse and recycling of the treated effluent can minimize water consumption and reduce the effluent discharge volume. The beneficial uses of the treated effluent may include dust suppression, wheel washing and general cleaning. If monitoring of the treated effluent quality from the works areas is required during the construction phase of the Project, the monitoring should be carried out in accordance with the WPCO license which is under the ambit of regional office (RO) of EPD. | Work site/During the construction period | √ Discharge licence was awarded by EPD on 7 December 2010. |
| Water Quality | The construction programme should be properly planned to minimize soil excavation, if any, in rainy seasons. This prevents soil erosion from | Work site/During the construction period | √ |

| Type of Impact | Environmental Protection Measures | Location/ Timing | Status |
|------------------|---|--|--------|
| | <p>exposed soil surfaces. Any exposed soil surfaces should also be properly protected to minimize dust emission. In areas where a large amount of exposed soil exists, earth bunds or sand bags should be provided. Exposed stockpiles should be covered with tarpaulin or impervious sheets at all times. The stockpiles of materials should be placed at locations away from any stream course so as to avoid releasing materials into the water bodies. Final surfaces of earthworks should be compacted and protected by permanent work. It is suggested that haul roads should be paved with concrete and the temporary access roads protected using crushed stone or gravel, wherever practicable. Wheel washing facilities should be provided at all site exists to ensure that earth, mud and debris would not be carried out of the works areas by vehicles.</p> | | |
| Water Quality | <p>Good sites practices should be adopted to clean the rubbish and litter on the construction sites so as to prevent the rubbish and litter from spreading from the site area. It is recommended to clean the construction sites on a regular basis.</p> | Work site/During the construction period | √ |
| Water Quality | <p>The presence of construction workers generates sewage. It is recommended to provide sufficient chemical toilets in the works areas. The toilet facilities should be more than 30m from any watercourse. A licensed water collector should be deployed to clean the chemical toilets on a regular basis. The construction workers can also make use of the existing toilet facilities within the PPSTW as necessary.</p> | Work site/During the construction period | √ |
| Water Quality | <p>Notices should be posted at conspicuous locations to remind the workers not to discharge any sewage or wastewater into the nearby environment during the construction phase of the project. Regular environmental audit on the construction phase of the project. Regular environmental audit on the construction site can provide an effective control of any malpractices and can achieve continual improvement of environmental performance on site.</p> | Work site/During the construction period | √ |
| Waste Management | <p>Contractor must register as a chemical waste producer if chemical wastes would be produced from the construction activities. The Waste Disposal Ordinance (Cap 354) and its subsidiary regulations in particular the Waste Disposal (Chemical Waste) (General) Regulation</p> | Work site/During the construction period | √ |

| Type of Impact | Environmental Protection Measures | Location/ Timing | Status |
|------------------|--|--|--------|
| | should be observed and complied with for control of chemical wastes. | | |
| Waste Management | Any service shop and maintenance facilities should be located on hard standings within a bunded area, and stumps and oil interceptors should be provided. Maintenance of vehicles and equipment involving activities with potential for leakage and spillage should only be undertaken within the areas appropriately equipped to control these discharges. | Work site/During the construction period | √ |
| Waste Management | <p>Disposal of chemical wastes should be carried out in compliance with the Waste Disposal Ordinance. The Code of Practice on the Packaging, Labelling and Storage of Chemical Wastes published under the Waste Disposal Ordinance details the requirements to deal with the chemical wastes. General requirements are given as follows:</p> <ul style="list-style-type: none"> • Suitable containers should be used to hold the chemical wastes to avoid leakage or spillage during storage, handling and transport. • Chemical waste containers should be suitably labelled, to notify and warn the personnel who are handling the wastes, to avoid accidents. • Storage area should be selected at a safe location on site and adequate space should be allocated to the storage area. | Work site/During the construction period | <> |
| Waste Management | <p><i>Good Site Practices</i> Recommendations for good site practices during the construction activities include:</p> <ul style="list-style-type: none"> • Nomination of an approved person, such as a site manager, to be responsible for good site practices, arrangements for collection and effective disposal to an appropriate facility, of all wastes generated at the site • Training of site personnel in proper waste management and chemical handling procedures • Provision of sufficient waste disposal points and regular collection of waste • Appropriate measures to minimise windblown litter and dust during transportation of waste by either covering trucks or by | Work site/During the construction period | √ |

| Type of Impact | Environmental Protection Measures | Location/ Timing | Status |
|------------------|---|--|--------|
| | <p>transporting wastes in enclosed containers</p> <ul style="list-style-type: none"> • Regular cleaning and maintenance programme for drainage systems, sumps and oil interceptors. • Separation of chemical wastes for special handling and appropriate treatment at the Chemical Waste Treatment Facility. | | |
| Waste Management | <p><i>Waste Reduction Measures</i></p> <p>Waste reduction is best achieved at the planning and design stage, as well as by ensuring the implementation of good site practices. Recommendations to achieve waste reduction include:</p> <ul style="list-style-type: none"> • Segregation and storage of different types of waste in different containers, skips or stockpiles to enhance reuse or recycling of materials and their proper disposal. • Encourage collection of aluminium cans by providing separate labelled bins to enable this waste to be segregated from other general refuse generated by the work force • Proper storage and site practices to minimise the potential for damage or contamination of construction materials. • Plan and stock construction materials carefully to minimise amount of waste generated and avoid unnecessary generation of waste. | Work site / During planning & design stage, and construction stage | √ |
| Waste Management | <p><i>General Refuse</i></p> <p>General refuse should be stored in enclosed bins or compaction units separate from C&D material. A reputable waste collector should be employed by the contractor to remove general refuse from the site, separately from C&D material. Preferably an enclosed and covered area should be provided to reduce the occurrence of 'wind blown' light material.</p> | Work site / During the construction period | √ |
| Waste Management | <p><i>Construction and Demolition Material</i></p> <p>In order to minimise the impact resulting from collection and transportation of C&D material for off-site disposal, the excavated</p> | Work site / During design stage & construction period | √ |

| Type of Impact | Environmental Protection Measures | Location/ Timing | Status |
|------------------|---|---|--------|
| | <p>material generated from site formation works for the proposed new facilities and units at the STW should be reused on-site as far as practicable. The surplus excavated material should be disposed of at the designated public fill reception facility, as agreed with the Secretary of the Public Fill Committee, for other beneficial uses.</p> | | |
| Waste Management | <p>Mitigation measures and good site practices should be followed to control potential environmental impact from handling and transportation of C&D material. The mitigation measures include:</p> <ul style="list-style-type: none"> • Where it is unavoidable to have transient stockpiles of C&D material pending collection for disposal, the transient stockpiles shall be located away from waterfront or storm drains as far as possible. • Open stockpiles of construction materials or construction wastes on-site should be covered with tarpaulin or similar fabric. • Skip hoist for material transport should be totally enclosed by impervious sheeting. • Every vehicle should be washed to remove any dusty materials from its body and wheels before leaving a construction site • The area where vehicle washing takes place and the section of the road between the washing facilities and the exit point should be paved with concrete, bituminous materials or hardcores. • The load of dusty materials carried by vehicle leaving a construction site should be covered entirely by clean impervious sheeting to ensure dust materials do not leak from the vehicle. • All dusty materials should be sprayed with water prior to any loading, unloading or transfer operation so as to maintain the dusty materials wet. • The height from which excavated materials are dropped should be controlled to a minimum practical height to limit fugitive dust generation from unloading. | Work site / During design stage & construction period | √ |
| Waste Management | <p>When disposing C&D material at a public filling facility, it shall be noted that the material shall only consist of earth, building debris and broken rock and concrete. The material shall be free from marine mud, household refuse, plastic, metals, industrial and chemical waste, animal</p> | Work site/ During design stage & construction period | √ |

| Type of Impact | Environmental Protection Measures | Location/ Timing | Status |
|--------------------|---|--|--|
| | <p>and vegetable matter, and other material considered to be unsuitable by the Filling Supervisor. In order to monitor the disposal of the surplus C&D material at the designed public fill reception facility and to control fly tipping, a trip-ticket system should be included as one of the contractual requirements and implemented by an Environmental Team undertaking the Environmental Monitoring and Audit work with reference to the ETWB TCW No. 31/2004 "Trip Ticket System for Disposal of Construction and Demolition Materials" as attached in Appendix 7-1. An Independent Environmental Checker should be responsible for auditing the results of the system.</p> | | |
| Waste Management | <p><i>Chemical Waste</i></p> <p>If chemical wastes are produced at the construction site, the Contractor would be required to register with the EPD as a Chemical Waste Producer and to follow the guidelines stated in the Code of Practice on the Packaging, Labelling and Storage of Chemical Wastes. Good quality containers compatible with the chemical wastes should be used, and incompatible chemicals should be stored separately. Appropriate labels should be securely attached on each chemical waste container indicating the corresponding chemical characteristics of the chemical waste, such as explosive, flammable, oxidizing, irritant, toxic, harmful, corrosive, etc. The Contractor shall use a licensed collector to transport and dispose of the chemical wastes, to either the Chemical Waste Treatment Centre, or another licensed facility, in accordance with the Waste Disposal (Chemical Waste) (General) Regulation.</p> | Work site / During the construction period | √ |
| Landscape & Visual | <p><u>Temporary Tree Nurseries</u></p> <p>Temporary tree nurseries may be set up for the transplanted tree and proposed trees at an early stage to allow small trees to grow during the construction periods. By the time when planting area becomes available, trees mature and increase in trunk & spread size. They will require minimal pruning and suffer much less damage during transplanting when comparing the travel distance from an on-site nursery to an off-site nursery.</p> <p>Besides, these trees may also be positioned as visual mitigation during</p> | Work site/ During design stage & construction period | √. A tree nursery has been set up off-site near the site office. |

| Type of Impact | Environmental Protection Measures | Location/ Timing | Status |
|--------------------|--|---|--------|
| | the construction period. | | |
| Landscape & Visual | <p><u>No-intrusion Zone</u></p> <p>To maximize protection to existing trees and ground vegetation, construction contracts may designate “No-intrusion Zone” to various areas within the site boundary with rigid and durable fencing for each individual no-intrusion zone. The contractor should close monitor and restrict the site working staff not to enter the “no-intrusion zone”, even for non-direct construction activities and storage of equipment.</p> | Work site/During design stage & construction period | √ |
| Landscape & Visual | <p><u>Hoarding</u></p> <p>Hoarding or boundary fencing for construction shall be considered. It should be sensitively designed, subtle, camouflaged and more ‘permeable’ so that they fit into the existing environment when looking from outside.</p> | Work site/During design stage & construction period | √ |
| Landscape & Visual | <p><u>Dust and Erosion Control for Exposed Soil</u></p> <p>Excavation works and demolition of existing building blocks and which will be highly visible form surrounding areas should be well planned and with precautions to suppress dust. Exposed soil shall be covered or ‘camouflaged’ and watered often. Areas that are expected to be left with bare soil for a long period of time after excavation shall be properly covered with suitable protective fabric. Silt and erosion shall be controlled by ground barriers around the slope cutting area..</p> | Work site/During design stage & construction period | √ |
| Landscape & Visual | <p><u>Existing Tree Record Inventory</u></p> <p>All retained trees should be record photographically at the commencement of the Contract, and carefully protected during the construction period. Detailed tree protection specification shall be allowed and included in the Contract Specification, which specifying the tree protection requirement, submission and approval system, and the tree monitoring system.</p> | Work site/During design stage & construction period | √ |

| Type of Impact | Environmental Protection Measures | Location/ Timing | Status |
|--------------------|--|---|--------|
| Landscape & Visual | <p><u>Construction Light</u></p> <p>All security floodlights for construction sites shall be equipped with adjustable shield, frosted diffusers and reflective covers, and be carefully controlled to minimize light pollution and night-time glare to nearby residences and GIC users. The Contractor shall consider other security measures which shall minimize the visual impacts.</p> | Work site / During design stage & construction period | √ |
| Landscape & Visual | <p><u>Tree Transplanting</u></p> <p>Apart from the 18 numbers of "<i>Leucaena leucocephala</i>", which are proposed to be felled in accordance with ETWB TCW No. 3/2006, all the affected trees shall be transplanted. Where practicable, trees shall be directly transplanted to permanent on-site locations. The location of the transplanted tree is shown in Figure 8.9.1.</p> | Work site / During design stage & construction period | √. |
| Landscape & Visual | <p><u>Tree Compensation Ratio</u></p> <p>The total number of compensatory trees planted in the project area shall not be less than 1:1 ratios by new trees. Required numbers and locations of compensatory trees shall be determined and agreed with Government during the tree felling application process under ETWCTC 3/2006. Compensatory trees shall be at least heavy standard size to create "immediate" greening effect. 81 numbers of "<i>Cassia surattensis</i>" will be provided as the additional compensatory planting for loss of greenery in the area due to removal of the affected trees. The location of the additional compensatory planting is shown in Figure 8.9.1.</p> | Work site / During design stage & construction period | N/A |
| Landscape & Visual | <p><u>Re-use of Existing Soil and Advance formation of Planting Area</u></p> <p>Existing topsoil shall be re-used where possible for new planting areas within the project. Advance formation of planting area and early implementation of the plating works can minimize adverse impact on trees. The construction program shall consider using the soil removed from one phase for backfilling another. Suitable storage ground, gathering ground and mixing ground may be set up on-site as necessary.</p> | Work site / During design stage & construction period | √ |

| Type of Impact | Environmental Protection Measures | Location/ Timing | Status |
|--|---|--|---|
| Landscape & Visual | <p><u>Establishment Period</u></p> <p>12 month establishment period for the soft landscape works will be allowed in the main contract. Most construction contracts in Hong Kong require the Contractor to carry out routine horticultural operations, including watering, pruning, weeding, pest control, replacement of dead plants etc. to ensure healthy establishment of new planting during a 12 month establishment period. This period also serves as a kind of warranty / guarantee on the quality of the plants supplied and installed by the Contractor. Monthly monitoring during the first year of establishment period is recommended.</p> | Work site/During operation period | N/A. To be implemented during operation phase of Project. |
| Landscape & Visual | <p><u>Re-instatement of excavated Area</u></p> <p>All excavated area and disturbed area for utilities diversion, temporary road diversion, and pipeline works will be reinstated to former conditions, subject to applicable Government Standards.</p> | Work site / During design stage & operation period | N/A. To be implemented during operation phase of Project. |
| Landscape & Visual | <p><u>Appearance and Greening for the proposed structures</u></p> <p>Compatible design, construction materials and surface finishes of the proposed structure should match with the nearby existing external appearance of PPSTW buildings for achieving visual uniformity. Finishing materials shall have due consideration to form, basic color, color/tone variation, micro-and macro-texture, and reflectivity/light absorbance to avoid glare. Planting, such as turf, low groundcovers and climbers, may also be planted on top of these elements to provide greening and aesthetic effect.</p> | Work site / During design stage & operation period | N/A. To be implemented during operation phase of Project. |
| <i>Summary of Key Environmental Mitigation Measures in Contract Requirements</i> | | | |
| Air Quality | Only Ultra-low-sulphur diesel (ULSD) should be used for all diesel-operated plants and equipments on site | Work sites / during construction period | √ |
| Air Quality and Noise | Plants and equipments of good operation conditions should be used on site. | Work sites / during construction period | √ |
| Noise | No diesel hammers should be used for piling works | Work sites / during construction period | √ |
| Noise | Construction Noise Permits (CNP) should be applied for works conducted outside non-restricted hours. | Work sites / during construction period | √ |
| Noise | Quiet construction equipments and the quietest practicable working | Work sites / during construction period | √ |

| Type of Impact | Environmental Protection Measures | Location/ Timing | Status |
|----------------------|--|---|--------|
| | methodologies should be adopted for works whenever feasible. Noise labels should be provided for air compressors. Hoods and cover panels of generators and air compressors should be closed during operation. Noise labels should be provided for air compressors and hand-held percussive breakers. | | |
| Waste Management | Temporary works construction on site should minimize the use of timber to reduce the quantity of C&D waste generated during works period. | Work sites / during construction period | √ |
| Landscape and Visual | Retained or to-be-transplanted trees on site should be properly protected from physical damages and soil compacts with temporary fencing or hessian armouring whenever feasible. | Work sites / during construction period | <> |

Remark:

- √ Compliance of Mitigation Measures
- <> Compliance of Mitigation but need improvement
- x Non-compliance of Mitigation Measures
- ▲ Non-compliance of Mitigation Measures but rectified by ATAL-Degrémont-China State JV
- Δ Deficiency of Mitigation Measures but rectified by ATAL-Degrémont-China State JV
- N/A Not Applicable in Reporting Period

Annex J

Waste Flow Table

**Contract No. : DC/2008/03 - Design, Build and Operate Pillar Point Sewage Treatment Works
Monthly Summary Waste Flow Table**

| Month | Actual Quantities of Inert C&D Materials Generated (see Note 13) | | | | | Actual Quantities of Non-inert C&D Materials (Construction Waste) Generated (see Note 13) | | | | |
|------------------|--|------------------------|--------------------------|------------------------------------|-------------------------|---|---|-----------------------|---------------------|--|
| | Total Quantity Generated | Reused in the Contract | Reused in other Projects | Hard Rocks & Large Broken Concrete | Disposed as Public Fill | Metals (see Note 1) | Paper/ cardboard packaging (see Note 1) | Plastics (see Note 2) | Chemical Waste | Others, e.g. general refuse (see Note 3) |
| | tonne | tonne | tonne | tonne | tonne | kilogram | kilogram | kilogram | Litre | tonne |
| Nov 2010 | 2,248.00 | 0.00 | 0.00 | 55.00 | 2248.00 | 60.00 | 100.00 | 0.00 | 0.00 | 18.05 (see Note 4) |
| Dec 2010 | 11,314.00 (see Note 4) | 0.00 | 0.00 | 225.00 | 11314.00 | 100.00 | 120.00 | 20.00 | 0.00 | 28.40 (see Note 4) |
| Jan 2011 | 58,383.00 (see Note 4) | 0.00 | 0.00 | 3,000.00 | 58,382.90 | 250.00 | 280.00 | 60.00 | 0.00 | 4.59 (see Note 4) |
| Sub-total | 71,945.00 | 0.00 | 0.00 | 3280.00 | 71944.90 | 410.00 | 500.00 | 80.00 | 0.00 | 51.04 |
| Feb 2011 | 12,855.00 | 0.00 | 0.00 | 1,050.00 | 12,854.70 | 100.00 | 150.00 | 50.00 | 0.00 | 2.43 (see Note 4) |
| Mar 2011 | 22,859.00 | 0.00 | 0.00 | 1,500.00 | 22,858.70 | 150.00 | 180.00 | 55.00 | 0.00 | 9.02 |
| Apr 2011 | 8,547.00 (see Note 7) | 0.00 | 5,684.00(see Note 5, 7) | 550.00 | 2,863.30 | 50.00 | 30.00 | 15.00 | 0.00 | 5.78 |
| Sub-total | 44,261.00 | 0.00 | 5684.00 | 3100.00 | 38576.70 | 300.00 | 360.00 | 120.00 | 0.00 | 17.23 |
| May 2011 | 6,293.00 (see Note 7) | 0.00 | 11.00 (see Note 5, 7) | 425.00 | 6,282.00 (see Note 7) | 45.00 | 25.00 | 10.00 | 360.00 (see Note 7) | 8.83 |
| Jun 2011 | 4,587.00 (see Note 7) | 0.00 | 0.00 (see Note 7) | 313.00 | 4,586.00 (see Note 7) | 40.00 | 30.00 | 15.00 | 0.00 | 7.10 |
| Jul 2011 | 523.00 | 0.00 | 0.00 | 25.00 | 522.90 | 15.00 | 5.00 | 10.00 | 0.00 | 7.20 |
| Sub-total | 11,403.00 | 0.00 | 11.00 | 763.00 | 11391.50 | 100.00 | 60.00 | 32.00 | 360.00 | 23.13 |
| Aug 2011 | 571.00 (see Note 11) | 0.00 | 0.00 | 50.00 | 571.00 (see Note 11) | 0.00 | 0.00 | 15.00 | 450.00 (see Note 8) | 6.12 |
| Sept 2011 | 235.00 | 0.00 | 0.00 | 25.00 | 235 | 20.00 | 0.00 | 0.00 | 0.00 | 12.15 (see Note 9) |
| Oct 2011 | 5,705.00 (see Note 10) | 0.00 | 0.00 | 650.00 | 5,705.00 (see Note 10) | 100.00 | 0.00 | 0.00 | 0.00 | 2.98 |
| Sub-total | 6,511.00 | 0.00 | 0.00 | 725.00 | 6511.00 | 120.00 | 0.00 | 15.00 | 450.00 | 21.25 |
| Nov 2011 | 6,294.00 | 0.00 | 0.00 | 775.00 | 6,294.00 | 50.00 | 0.00 | 0.00 | 0.00 | 44.84 |
| Dec 2011 | 3,011.00 | 0.00 | 0.00 | 263.00 | 3,011.00 | 20.00 | 0.00 | 0.00 | 0.00 | 17.14 |
| Jan 2012 | 349.00 | 64.00 | 0.00 | 25.00 | 284.60 | 20.00 | 150.00 | 0.00 | 0.00 | 49.01 |

| Month | Actual Quantities of Inert C&D Materials (Public Fill) Generated | | | | | Actual Quantities of Non-inert C&D Materials (Construction Waste) Generated | | | | |
|-----------|--|------------------------|--------------------------|------------------------------------|-------------------------|---|---|-----------------------|----------------|--|
| | Total Quantity Generated | Reused in the Contract | Reused in other Projects | Hard Rocks & Large Broken Concrete | Disposed as Public Fill | Metals (see Note 1) | Paper/ cardboard packaging (see Note 1) | Plastics (see Note 2) | Chemical Waste | Others, e.g. general refuse (see Note 3) |
| | tonne | tonne | tonne | tonne | tonne | kilogram | kilogram | kilogram | Litre | tonne |
| Sub-total | 9,654.00 | 64.00 | 0.00 | 1063.00 | 9589.60 | 90.00 | 150.00 | 0.00 | 0.00 | 110.99 |
| Feb 2012 | 3,371.00 | 30.00 | 0.00 | 2,810.00 | 3,341.00 | 150.00 | 0.00 | 0.00 | 0.00 | 48.72 |
| Mar 2012 | 6,460.00 | 3,000.00 | 0.00 | 625.00 | 3,459.70 | 30.00 | 0.00 | 0.00 | 0.00 | 41.10 |
| Apr 2012 | 3,774.00 | 3,000.00 | 0.00 | 250.00 | 774.40 | 40.00 | 0.00 | 0.00 | 0.00 | 40.01 |
| Sub-total | 13,605.00 | 6,030.00 | 0.00 | 3685.00 | 7575.10 | 220.00 | 0.00 | 0.00 | 0.00 | 129.83 |
| May 2012 | 7,936.00 | 5,600.00 | 0.00 | 750.00 | 2,336.20 | 40.00 | 0.00 | 10.00 | 0.00 | 75.19 |
| Jun 2012 | 13,091.00 | 7,500.00 | 0.00 | 875.00 | 5,590.80 | 40.00 | 35.50 | 8.00 | 0.00 | 66.74 |
| Jul 2012 | 11,972.00 | 8,600.00 | 0.00 | 825.00 | 3,372.50 | 40.00 | 36.40 | 5.00 | 0.00 | 100.50 |
| Sub-total | 32,999.00 | 21,700.00 | 0.00 | 2450.00 | 11299.50 | 120.00 | 70.90 | 23.00 | 0.00 | 242.43 |
| Aug 2012 | 11,660.00 | 11,000.00 | 0.00 | 950.00 | 659.80 | 30.00 | 10.00 | 6.00 | 0.00 | 78.77 |
| Sept 2012 | 3,055.00 | 1,500.00 | 0.00 | 920.00 | 1,555.38 | 30.00 | 40.00 | 5.00 | 0.00 | 118.80 |
| Oct 2012 | 2,657.00 | 200.00 | 0.00 | 500.00 | 2,457.01 | 30.00 | 59.40 | 8.00 | 0.00 | 124.04 |
| Sub-total | 17,372.00 | 12,700.00 | 0.00 | 2370.00 | 4672.19 | 90.00 | 109.40 | 19.00 | 0.00 | 321.61 |
| Nov 2012 | 2,691.00 | 250.00 | 0.00 | 750.00 | 2,441.01 | 50.00 | 25.00 | 10.00 | 0.00 | 128.08 |
| Dec 2012 | 4,319.00 | 400.00 | 0.00 | 200.00 | 3,919.13 | 60.00 | 20.00 | 15.00 | 0.00 | 165.28 |
| Jan 2013 | 4,442.00 | 100.00 | 0.00 | 200.00 | 4,341.56 | 200.00 | 40.00 | 20.00 | 0.00 | 111.23 |
| Sub-total | 11,452.00 | 750.00 | 0.00 | 1150.00 | 10701.70 | 310.00 | 85.00 | 45.00 | 0.00 | 404.59 |
| Feb 2013 | 1,286.00 | 85.00 | 0.00 | 50.00 | 1,201.23 | 180.00 | 35.00 | 16.00 | 0.00 | 99.44 |
| Mar 2013 | 900.00 | 900.00 | 0.00 | 120.00 | 0.00 | 120.00 | 45.00 | 10.00 | 0.00 | 97.43 |
| Apr 2013 | 680.00 | 680.00 | 0.00 | 300.00 | 0.00 | 22.00 | 50.00 | 15.00 | 0.00 | 80.21 |
| Sub-total | 2866.00 | 1665.00 | 0.00 | 470.00 | 1201.23 | 322.00 | 130.00 | 41.00 | 0.00 | 277.08 |
| May 2013 | 1443.37 | 100.00 | 0.00 | 1020.00 | 1343.37 | 40.00 | 43.00 | 9.00 | 0.00 | 46.88 (see Note 16) |
| June 2013 | 1993.06 | 50.00 | 0.00 | 850.00 | 1943.06 | 100.00 | 60.00 | 5.00 | 0.00 | 53.89 |

| | | | | | | | | | | |
|-----------|-----------|----------|---------|----------|-----------|---------|---------|--------|--------|---------|
| July 2013 | 1246.64 | 100 | 0 | 1100 | 1146.64 | 100 | 60 | 10 | 0 | 71.15 |
| Sub-total | 4683.07 | 250.00 | 0.00 | 2970.00 | 4433.07 | 240.00 | 163.00 | 24.00 | 0.00 | 171.92 |
| Total | 228194.44 | 43259.00 | 5695.00 | 23046.00 | 179239.86 | 2362.00 | 1671.30 | 411.00 | 810.00 | 1817.98 |

- Notes:
- (1) Metal and paper/cardboard packaging were collected by recycler for recycling.
 - (2) Plastics refer to plastic bottles/containers, plastic sheets/foam from packaging material collected by recycler for recycling.
 - (3) General refuse was disposed of at WENT by subcontractors.
 - (4) The waste flow data for November and December 2010, January and February 2011 was updated in March 2011 based on SOR's comments and has been confirmed by the Contractor.
 - (5) The inert C&D materials were reused in the Contract No. EP/SP/58/08 at Tuen Mun Tsang Tsui.
 - (6) Chemical waste was collected through the licensed chemical waste collector, Dunwell Ind. (Holdings) Ltd, with the waste collection licence number 7111-757-W0015-WC.
 - (7) The waste flow data for April, May and June 2011 was updated in August 2011 based on SOR's comments and has been confirmed by the Contractor.
 - (8) The waste flow data of chemical waste for August 2011 was updated in October 2011 based on Contractor's revised waste flow summary.
 - (9) The waste flow data of general refuse for September 2011 was updated in November 2011 based on Contractor's revised waste flow summary.
 - (10) The waste flow data of C&D material for October 2011 was updated in December 2011 based on Contractor's revised waste flow summary.
 - (11) The waste flow data of C&D material for August 2011 was updated in January 2012 based on SOR's comments and has been confirmed by the Contractor.
 - (12) The waste flow data of metal and paper/cardboard packaging for June 2011 was revised in August 2012.
 - (13) The quantity of inert and non-inert C&D material generated from May 2012 to December and imported fill material was updated by the Contractor on 6 November 2012.
 - (14) The quantity of Rocks & Broken Concrete from November 2010 to November 2012 was updated by the Contractor on 12 December 2012.
 - (15) The quantity of C&D material reused in this Contract in Oct, Nov and Dec 2012 were updated by the Contractor on 5 January 2012.
 - (16) The quantity of general refuse in this Contract for May 2013 was updated by the Contractor in June 2013.

Annex K

Environmental Complaint,
Environmental Summons
and Persecution Log

Annex K Cumulative Complaint and Summons/Prosecutions Log

| Reporting Month | Number of Complaints in Reporting Month | Number of Summons/Prosecutions in Reporting Month |
|------------------------|--|--|
| November 2010 | 0 | 0 |
| December 2010 | 0 | 0 |
| January 2011 | 0 | 0 |
| February 2011 | 0 | 0 |
| March 2011 | 0 | 0 |
| April 2011 | 0 | 0 |
| May 2011 | 0 | 0 |
| June 2011 | 0 | 0 |
| July 2011 | 0 | 0 |
| August 2011 | 0 | 0 |
| September 2011 | 0 | 0 |
| October 2011 | 0 | 0 |
| November 2011 | 0 | 0 |
| December 2011 | 0 | 0 |
| January 2012 | 0 | 0 |
| February 2012 | 0 | 0 |
| March 2012 | 0 | 0 |

| Reporting Month | Number of Complaints in Reporting Month | Number of Summons/Prosecutions in Reporting Month |
|-----------------|---|---|
| April 2012 | 0 | 0 |
| May 2012 | 0 | 0 |
| June 2012 | 0 | 0 |
| July 2012 | 0 | 0 |
| August 2012 | 0 | 0 |
| September 2012 | 0 | 0 |
| October 2012 | 0 | 0 |
| November 2012 | 0 | 0 |
| December 2012 | 0 | 0 |
| January 2013 | 0 | 0 |
| February 2013 | 0 | 0 |
| March 2013 | 0 | 0 |
| April 2013 | 0 | 0 |
| May 2013 | 0 | 0 |
| June 2013 | 0 | 0 |
| July 2013 | 0 | 0 |
| Overall Total | 0 | 0 |

Annex L

Construction Programme of the Project

| Activity ID | Description | Original Juratior | Early Start | Early Finish | Late Start | Late Finish | Total Float | 2013 | | 2014 | |
|-------------------------------------|--|-------------------|-------------|--------------|------------|-------------|-------------|------|----|------|----|
| | | | | | | | | Q3 | Q4 | Q1 | Q2 |
| Building and Structures | | | | | | | | | | | |
| SSP200505 | Design Consent from WSD (FS & FW) | 0 | | 05AUG2013 | | 08JUL2013 | -24d | | | | |
| SSP200510 | Watermain (PW): Submit WW046 Part 4 | 1 | 25JUL2013 | 25JUL2013 | 10JUN2013 | 10JUN2013 | -37d | | | | |
| SSP200520 | Watermain (PW): WSD Inspection and Re-inspection | 25 | 07AUG2013 | 04SEP2013 | 11JUN2013 | 11JUL2013 | -47d | | | | |
| SSP200530 | Watermain(PW): WW046 Part 5 | 24 | 05SEP2013 | 04OCT2013 | 12JUL2013 | 08AUG2013 | -47d | | | | |
| SSP201510 | Watermain (FS1): Submit WW046 Part 4 | 1 | 06AUG2013 | 06AUG2013 | 09JUL2013 | 09JUL2013 | -24d | | | | |
| SSP201520 | Watermain(FS1): WSD Inspection and Re-inspection | 25 | 07AUG2013 | 04SEP2013 | 10JUL2013 | 07AUG2013 | -24d | | | | |
| SSP201530 | Watermain (FS1): WW046 Part 5 | 24 | 05SEP2013 | 04OCT2013 | 08AUG2013 | 04SEP2013 | -24d | | | | |
| Telecommunication | | | | | | | | | | | |
| Building and Structures | | | | | | | | | | | |
| SST200610 | Handover Plant Room and Cable Duct to Telecom Co | 6 | 21AUG2013 | 27AUG2013 | 15JUL2013 | 20JUL2013 | -32d | | | | |
| SST200620 | Telecom Co to Install Cable and Equipment | 45 | 28AUG2013 | 11OCT2013 | 22JUL2013 | 04SEP2013 | -37d | | | | |
| E&M Works | | | | | | | | | | | |
| Procurement and Installation | | | | | | | | | | | |
| Building and Structures | | | | | | | | | | | |
| EMW001100 | Penstocks for Manholes N2 | 26 | 26JUL2013 | 24AUG2013 | 03JUL2013 | 01AUG2013 | -20d | | | | |
| EMW001110 | Penstocks for Manholes N1 / bypass | 28 | 19AUG2013 | 19SEP2013 | 24JUN2013 | 26JUL2013 | -47d | | | | |
| EMW001200 | Penstock at connection to outfall PS | 22 | 15AUG2013 | 09SEP2013 | 04JUL2013 | 29JUL2013 | -36d | | | | |
| EMW130377 | Fine Screen: Power Cable Termination | 55 | 27APR2013 | 10JUL2013 | 27APR2013 | 06JUL2013 | -3d | | | | |
| EMW130387 | Fine Screen: Control Cable Termination | 55 | 27APR2013 | 16JUL2013 | 27APR2013 | 06JUL2013 | -8d | | | | |
| EMW153230 | Septic Station: Mixer/Pump Installation | 100 | 04NOV2012 | 16JUL2013 | 04NOV2012 | 04JUN2013 | -34d | | | | |
| EMW153234 | Septic Station: Mixer/Pump Install Pipe & RAIL | 7 | 28MAY2013 | 29JUN2013 | 28MAY2013 | 29JUN2013 | 0 | | | | |
| EMW153236 | Septic Station: Mixer/Pump Install Pipe Support | 7 | 02JUL2013 | 09JUL2013 | 02JUL2013 | 09JUL2013 | 0 | | | | |
| EMW153238 | Septic Station: Mixer/Pump Install Pump body | 3 | 10JUL2013 | 12JUL2013 | 10JUL2013 | 12JUL2013 | 0 | | | | |
| EMW153240 | Septic Station: Penstock Installation | 20 | 26APR2013 | 02JUL2013 | 26APR2013 | 02JUL2013 | 0 | | | | |
| EMW153250 | Septic Station: Pipe and Valve Installation | 10 | 18JUN2013 | 02JUL2013 | 18JUN2013 | 04JUN2013 | -22d | | | | |
| EMW153260 | Septic Station: Lifting Appliance Installation | 30 | 08MAY2013 | 02JUL2013 | 08MAY2013 | 04JUN2013 | -22d | | | | |
| EMW153270 | Septic Station: Power Supply System Installation | 75 | 15MAY2013 | 02AUG2013 | 15MAY2013 | 02AUG2013 | 0 | | | | |
| EMW153272 | Septic Station: Cable Installation & Termination | 10 | 17JUN2013 | 16JUL2013 | 17JUN2013 | 04JUL2013 | -10d | | | | |
| EMW153277 | EB1-PTW: EB1MCC Power Cable Term, & Test | 35 | 18JUN2013 | 05JUL2013 | 18JUN2013 | 11JUN2013 | -19d | | | | |
| EMW153280 | EB1-PTW: EB1MCC Control Sys Installation | 30 | 18JUN2013 | 22JUL2013 | 18JUN2013 | 22JUL2013 | 0 | | | | |
| EMW153285 | EB1-PTW: EB1 Control Cable Laying, Fixing | 15 | 18JUN2013 | 10JUL2013 | 18JUN2013 | 10JUL2013 | 0 | | | | |
| EMW153287 | EB1-PTW: EB1 Control Cable Termination | 25 | 26JUN2013 | 27JUL2013 | 26JUN2013 | 17JUN2013 | -34d | | | | |
| EMW155100 | EB1-PTW: Control System Installation | 60 | 04JUN2013 | 20AUG2013 | 04JUN2013 | 07SEP2013 | 16d | | | | |
| EMW163000 | Access Control System Installation | 80 | 06JUN2013 | 06SEP2013 | 06JUN2013 | 17AUG2013 | -17d | | | | |
| EMW164000 | ALPR System Installation | 80 | 06JUN2013 | 06SEP2013 | 06JUN2013 | 17AUG2013 | -17d | | | | |
| EMW171500 | PTW: SCADA System Installation | 65 | 04JUN2013 | 20AUG2013 | 04JUN2013 | 31AUG2013 | 10d | | | | |
| EMW181450 | PTW: MVAC Installation AB | 80 | 09MAR2013 | 28JUN2013 | 09MAR2013 | 28JUN2013 | | | | | |
| EMW181550 | PTW: FS CS H/O Duct from Admin Bldg | 0 | 13SEP2013 | | 13SEP2013 | | 0 | | | | |
| EMW181550E | PTW: FS Laying Signal Cable from Admin Bldg | 30 | 13SEP2013 | 21OCT2013 | 13SEP2013 | 21OCT2013 | 0 | | | | |
| EMW185240 | PTW: FRP Cover - FS | 20 | 21JUN2013 | 15JUL2013 | 21JUN2013 | 15JUL2013 | 0 | | | | |
| EMW185250 | PTW: FRP Cover - GC | 20 | 26JUN2013 | 22JUL2013 | 26JUN2013 | 01AUG2013 | 9d | | | | |
| EMW185340 | PTW: DO Duct Support - FS | 20 | 21JUN2013 | 10JUL2013 | 21JUN2013 | 31AUG2013 | 45d | | | | |
| EMW185350 | PTW: DO Duct Support - GC | 20 | 10JUL2013 | 01AUG2013 | 31AUG2013 | 24SEP2013 | 45d | | | | |
| EMW185440 | PTW: DO Duct - FS x | 30 | 11JUL2013 | 14AUG2013 | 06SEP2013 | 12OCT2013 | 49d | | | | |
| EMW185450 | PTW: DO Duct - GC x | 30 | 02AUG2013 | 05SEP2013 | 25SEP2013 | 31OCT2013 | 45d | | | | |
| EMW186140 | PTW: Process water pipe - FS x | 20 | 15JUN2013 | 04JUL2013 | 15JUN2013 | 04JUL2013 | 0 | | | | |
| EMW186150 | PTW: Process water pipe - GC | 20 | 21JUN2013 | 10JUL2013 | 21JUN2013 | 19JUN2013 | -17d | | | | |
| EMW191700 | PTW: EB1_PTWMCC Energization | 3 | 20JUL2013 | 23JUL2013 | 14JUN2013 | 17JUN2013 | -30d | | | | |
| EMW201050 | CEPT: Penstock Leakage Test | 40 | 31MAY2013 | 10JUL2013 | 31MAY2013 | 06JUL2013 | -3d | | | | |
| EMW201135 | CEPT: Scrapper Tank 5 final screeding | 5 | 28JUN2013 | 04JUL2013 | 25MAY2013 | 30MAY2013 | -28d | | | | |
| EMW201145 | CEPT: Scrapper Tank 5 final screeding inspect. | 10 | 05JUL2013 | 16JUL2013 | 31MAY2013 | 11JUN2013 | -28d | | | | |
| EMW201200 | CEPT: Larmellar System Installation | 241 | 20AUG2012 | 02AUG2013 | 20AUG2012 | 06JUL2013 | -23d | | | | |
| EMW201243 | CEPT: Larmellar 3 module Installation | 20 | 21JUN2013 | 10JUL2013 | 21JUN2013 | 25MAY2013 | -37d | | | | |
| EMW201244 | CEPT: Larmellar 4 module Installation | 20 | 28JUN2013 | 22JUL2013 | 14MAY2013 | 06JUN2013 | -37d | | | | |
| EMW201245 | CEPT: Larmellar 5 module Installation | 20 | 17JUL2013 | 08AUG2013 | 13JUN2013 | 06JUL2013 | -28d | | | | |
| EMW201420 | CEPT: Scum Pipe Installation | 30 | 27MAY2013 | 29JUN2013 | 27MAY2013 | 29JUN2013 | 0 | | | | |
| EMW206113 | CEPT: Tank 3 FRP DO covers Installation | 15 | 28JUN2013 | 16JUL2013 | 27JUN2013 | 15JUL2013 | -1d | | | | |
| EMW206114 | CEPT: Tank 4 FRP DO covers Installation | 15 | 05JUL2013 | 22JUL2013 | 04JUL2013 | 20JUL2013 | -1d | | | | |
| EMW206115 | CEPT: Tank 5 FRP DO covers Installation | 15 | 13JUL2013 | 30JUL2013 | 12JUL2013 | 29JUL2013 | -1d | | | | |
| EMW207100 | CEPT: SCADA System Installation | 70 | 27MAR2013 | 22JUL2013 | 27MAR2013 | 07SEP2013 | 41d | | | | |
| EMW207113 | CEPT: Tank 3 Control and Instrumt G/L | 15 | 04JUN2013 | 10JUL2013 | 04JUN2013 | 10JUL2013 | 0 | | | | |
| EMW207114 | CEPT: Tank 4 Control and Instrumt G/L | 15 | 24JUN2013 | 10JUL2013 | 24JUN2013 | 10JUL2013 | 0 | | | | |
| EMW207115 | CEPT: Tank 5 Control and Instrumt G/L | 15 | 24JUN2013 | 10JUL2013 | 24JUN2013 | 03AUG2013 | 21d | | | | |
| EMW207124 | CEPT: Pump Hall 4 Control and Instrumt H/L | 15 | 24JUN2013 | 10JUL2013 | 24JUN2013 | 10JUL2013 | 0 | | | | |
| EMW207125 | CEPT: Pump Hall 5 Control and Instrumt H/L | 15 | 24JUN2013 | 10JUL2013 | 24JUN2013 | 03AUG2013 | 21d | | | | |
| EMW208550 | CEPT: FS CS H/O Duct from Admin Bldg | 0 | 16JUL2013 | | 16JUL2013 | | 0 | | | | |

Start date 14JUL2010
Finish date 24JUN2014
Data date 28JUN2013
Run date 01AUG2013
Page number 8A
Project name PR34
c Primavera Systems, Inc.

■ Early bar
■ Progress bar
■ Critical bar
■ Summary bar
◆ Start milestone point
◆ Finish milestone point

| Activity ID | Description | Original Duration | Early Start | Early Finish | Late Start | Late Finish | Total Float | 2013 | | 2014 | |
|-------------|--|-------------------|-------------|--------------|------------|-------------|-------------|------|----|------|----|
| | | | | | | | | Q3 | Q4 | Q1 | Q2 |
| EMW208550E | CEPT: FS Laying Signal Cable from Admin Bldg | 30 | 04JUL2013 | 07AUG2013 | 04JUL2013 | 07AUG2013 | 0 | | | | |
| EMW208705 | CEPT: Elect Installation (ref) | 158 | 03DEC2012 | 16JUL2013 | 03DEC2012 | 06JUL2013 | -8d | | | | |
| EMW211700 | CEPT: EB2_CEPTMCC Energization | 10 | 29JUL2013 | 08AUG2013 | 25JUN2013 | 06JUL2013 | -28d | | | | |
| EMW303107 | UV: UV Penstock & Stoplog Leakage Test | 30 | 20JUN2013 | 22JUL2013 | 20JUN2013 | 15JUL2013 | -6d | | | | |
| EMW303120 | UV: UV PDC Installation | 20 | 11JUN2013 | 05JUL2013 | 11JUN2013 | 05JUL2013 | 0 | | | | |
| EMW303130 | UV: UV HSC Installation | 20 | 18JUN2013 | 09JUL2013 | 18JUN2013 | 09JUL2013 | 0 | | | | |
| EMW303150 | UV: UV Instrument Installation | 10 | 23JUN2013 | 02JUL2013 | 23JUN2013 | 02JUL2013 | 0 | | | | |
| EMW303180 | UV: Lamp Installation | 20 | 18JUN2013 | 22JUL2013 | 18JUN2013 | 14AUG2013 | 20d | | | | |
| EMW303350 | UV: DO Cover Installation | 30 | 06JUL2013 | 09AUG2013 | 11JUL2013 | 14AUG2013 | 4d | | | | |
| EMW304100 | UV: Power Supply System Installation (ref) | 55 | 25MAY2013 | 16JUL2013 | 25MAY2013 | 15JUL2013 | -1d | | | | |
| EMW304175 | UV: Power Cable Laying and Fixing | 40 | 17JUN2013 | 02AUG2013 | 17JUN2013 | 15JUL2013 | -16d | | | | |
| EMW304177 | UV: Power Cable Termination | 25 | 26JUN2013 | 02AUG2013 | 26JUN2013 | 15JUL2013 | -16d | | | | |
| EMW305100 | UV: Control System Installation (ref) | 40 | 20JUN2013 | 02AUG2013 | 20JUN2013 | 29AUG2013 | 23d | | | | |
| EMW305185 | UV: Control Cable Laying and Fixing | 40 | 23JUN2013 | 02AUG2013 | 23JUN2013 | 14AUG2013 | 10d | | | | |
| EMW305187 | UV: Control Cable Termination | 30 | 28JUN2013 | 02AUG2013 | 11JUL2013 | 14AUG2013 | 10d | | | | |
| EMW307100 | UV: SCADA system Installation | 60 | 24JUN2013 | 26AUG2013 | 24JUN2013 | 14AUG2013 | -10d | | | | |
| EMW308100 | UV: BS system Installation | 60 | 25MAY2013 | 10JUL2013 | 25MAY2013 | 06JUL2013 | -3d | | | | |
| EMW308410 | UV: MVAC Installation H/L | 30 | 28MAY2013 | 03JUL2013 | 28MAY2013 | 03JUL2013 | 0 | | | | |
| EMW308650 | UV: P&D Installation L/L | 30 | 27JUN2013 | 27JUL2013 | 27JUN2013 | 15JUL2013 | -11d | | | | |
| EMW308750 | UV: EL Installation L/L | 30 | 08JUN2013 | 16JUL2013 | 08JUN2013 | 15JUL2013 | -1d | | | | |
| EMW309110 | UV: DO cover support | 20 | 19JUN2013 | 10JUL2013 | 19JUN2013 | 10JUL2013 | 0 | | | | |
| EMW309120 | UV: DO Duct support | 20 | 11JUL2013 | 02AUG2013 | 11JUL2013 | 02AUG2013 | 0 | | | | |
| EMW309150 | UV: DO Duct Installation | 30 | 03AUG2013 | 06SEP2013 | 03AUG2013 | 06SEP2013 | 0 | | | | |
| EMW309170 | UV: DO Cover Installation | 15 | 07SEP2013 | 25SEP2013 | 07SEP2013 | 25SEP2013 | 0 | | | | |
| EMW311530 | UV: UVMCC Cable Test and Termination | 15 | 27JUN2013 | 16JUL2013 | 27JUN2013 | 15JUL2013 | -1d | | | | |
| EMW311535 | UV: UVMCC Cable Test and Termination (Fm. EB3) | 15 | 20JUN2013 | 04JUL2013 | 20JUN2013 | 30MAY2013 | -28d | | | | |
| EMW311700 | UV: UVMCC Energization | 3 | 20JUL2013 | 23JUL2013 | 12JUL2013 | 15JUL2013 | -7d | | | | |
| EMW322400 | RWPS: DAF Installation | 60 | 27JUN2013 | 06SEP2013 | 27JUN2013 | 13JUL2013 | -47d | | | | |
| EMW322450 | RWPS: Pump & Pipework Installation | 55 | 27JUN2013 | 31AUG2013 | 27JUN2013 | 06JUL2013 | -48d | | | | |
| EMW322573 | RWPS: Cable Tray & support above G/F | 33 | 17JUL2013 | 23AUG2013 | 21JUN2013 | 30JUL2013 | -21d | | | | |
| EMW322573A | RWPS: CS H/O Ducts OFPS,LVSb-B to EB3-RWMCC | 0 | 04JUL2013 | | 20MAY2013 | | -37d | | | | |
| EMW322573B | RWPS: CS H/O Ducts EB3-RWMCC to RWPS | 0 | 04JUL2013 | | 20MAY2013 | | -37d | | | | |
| EMW322574 | RWPS: RWPS Area Cable Tray & Support | 40 | 28JUN2013 | 14AUG2013 | 20MAY2013 | 06JUL2013 | -33d | | | | |
| EMW322600 | RWPS: BS Installation | 30 | 05JUL2013 | 08AUG2013 | 31MAY2013 | 06JUL2013 | -28d | | | | |
| EMW322641 | RWPS: MVAC Installation H/L | 30 | 28JUN2013 | 02AUG2013 | 23MAY2013 | 27JUN2013 | -30d | | | | |
| EMW322645 | RWPS: MVAC Installation LL | 30 | 03AUG2013 | 06SEP2013 | 03AUG2013 | 06SEP2013 | 0 | | | | |
| EMW322651 | RWPS: FS Installation H/L | 30 | 28JUN2013 | 02AUG2013 | 23MAY2013 | 27JUN2013 | -30d | | | | |
| EMW322655 | RWPS: FS Installation LL | 30 | 03AUG2013 | 06SEP2013 | 28JUN2013 | 02AUG2013 | -30d | | | | |
| EMW322655A | RWPS: FS CS H/O Duct from Admin Bldg | 0 | 29JUL2013 | | 29JUL2013 | | 0 | | | | |
| EMW322655B | RWPS: FS Laying Signal Cable from Admin Bldg | 30 | 03AUG2013 | 06SEP2013 | 29JUL2013 | 31AUG2013 | -5d | | | | |
| EMW322661 | RWPS: P&D Installation H/L | 30 | 03AUG2013 | 06SEP2013 | 29JUL2013 | 31AUG2013 | -5d | | | | |
| EMW322665 | RWPS: P&D Installation L/L | 30 | 03AUG2013 | 06SEP2013 | 29JUL2013 | 31AUG2013 | -5d | | | | |
| EMW322671 | RWPS: EL Installation H/L | 35 | 11JUL2013 | 20AUG2013 | 10JUN2013 | 22JUL2013 | -25d | | | | |
| EMW322675 | RWPS: EL Installation L/L | 35 | 21AUG2013 | 02OCT2013 | 23JUL2013 | 31AUG2013 | -25d | | | | |
| EMW322700 | RWPS: Control system Installation (ref) | 60 | 28JUN2013 | 06SEP2013 | 20MAY2013 | 30JUL2013 | -33d | | | | |
| EMW322785 | RWPS: MCC Control Cable Laying and Fixing | 60 | 17JUL2013 | 25SEP2013 | 20MAY2013 | 30JUL2013 | -48d | | | | |
| EMW322787 | RWPS: MCC Control Cable Termination | 30 | 21AUG2013 | 25SEP2013 | 25JUN2013 | 30JUL2013 | -48d | | | | |
| EMW323520 | RWPS: RWMCC EB3 Power Cable Laying | 60 | 04JUL2013 | 11SEP2013 | 20MAY2013 | 30JUL2013 | -37d | | | | |
| EMW323530 | RWPS: ALL Cable Test and Termination | 30 | 08AUG2013 | 11SEP2013 | 25JUN2013 | 30JUL2013 | -37d | | | | |
| EMW323700 | RWPS: RWMCC at EB3 Energization | 3 | 26SEP2013 | 28SEP2013 | 31JUL2013 | 02AUG2013 | -48d | | | | |
| EMW501315 | Chemical: PV sys Delivery | 30 | 18FEB2013 | 17JUL2013 | 18FEB2013 | 05JUL2013 | -12d | | | | |
| EMW505100 | Chemical: Control System Installation* | 60 | 13MAY2013 | 10JUL2013 | 13MAY2013 | 11JUL2013 | 1d | | | | |
| EMW506100 | Chemical: BS System Installation | 50 | 15MAR2013 | 04JUL2013 | 15MAR2013 | 06JUL2013 | 2d | | | | |
| EMW506450 | Chemical: MVAC Installation LL | 60 | 10MAY2013 | 03JUL2013 | 10MAY2013 | 09JUL2013 | 5d | | | | |
| EMW506550A | Chemical: FS CS H/O Duct from Admin Bldg | 0 | 29JUL2013 | | 05JUL2013 | | -20d | | | | |
| EMW506550B | Chemical: FS Laying Signal Cable from Admin Bldg | 30 | 29JUL2013 | 31AUG2013 | 05JUL2013 | 08AUG2013 | -20d | | | | |
| EMW506650 | Chemical: P&D Installation L/L | 30 | 27MAY2013 | 03JUL2013 | 27MAY2013 | 09JUL2013 | 5d | | | | |
| EMW506910 | Chemical: PV structure Installation | 20 | 18JUL2013 | 09AUG2013 | 06JUL2013 | 29JUL2013 | -10d | | | | |
| EMW506920 | Chemical: PV panel Installation | 30 | 10AUG2013 | 13SEP2013 | 30JUL2013 | 02SEP2013 | -10d | | | | |
| EMW506930 | Chemical: PV Inverter Installation | 20 | 28AUG2013 | 19SEP2013 | 16AUG2013 | 07SEP2013 | -10d | | | | |
| EMW506940 | Chemical: PV panel cabling Installation | 20 | 03SEP2013 | 26SEP2013 | 22AUG2013 | 13SEP2013 | -10d | | | | |
| EMW507100 | Chemical: SCADA System Installation | 60 | 02MAY2013 | 15JUL2013 | 02MAY2013 | 07SEP2013 | 47d | | | | |
| EMW508700 | Chemical: CHEMMCC Energization | 3 | 29JUL2013 | 31JUL2013 | 12JUL2013 | 15JUL2013 | -14d | | | | |
| EMW603100 | Sludge: Centrifuge Installation (Ref) | 80 | 28MAR2013 | 15JUL2013 | 28MAR2013 | 13JUN2013 | -26d | | | | |
| EMW603113 | Sludge: Centrifuge 1 Pipe Installation | 30 | 28MAY2013 | 10JUL2013 | 28MAY2013 | 25MAY2013 | -37d | | | | |
| EMW603114 | Sludge: Centrifuge 1 Control Installation | 20 | 08JUN2013 | 16JUL2013 | 08JUN2013 | 25MAY2013 | -42d | | | | |
| EMW603116 | Sludge: Centrifuge 1 Enclosure Installation | 15 | 17JUL2013 | 02AUG2013 | 27MAY2013 | 13JUN2013 | -42d | | | | |

| | |
|---------------------------|-----------|
| Start date | 14JUL2010 |
| Finish date | 24JUN2014 |
| Data date | 28JUN2013 |
| Run date | 01AUG2013 |
| Page number | 9A |
| Project name | PR34 |
| © Primavera Systems, Inc. | |

| | |
|--|------------------------|
| | Early bar |
| | Progress bar |
| | Critical bar |
| | Summary bar |
| | Start milestone point |
| | Finish milestone point |

| Activity ID | Description | Original Duration | Early Start | Early Finish | Late Start | Late Finish | Total Float | 2013 | | 2014 | |
|---------------------------------------|---|-------------------|-------------|--------------|------------|-------------|-------------|------|----|------|----|
| | | | | | | | | Q3 | Q4 | Q1 | Q2 |
| EMW941520 | EB 1: PTW Main Cable Laying | 10 | 13JUN2013 | 29JUN2013 | 13JUN2013 | 29JUN2013 | 0 | | | | |
| EMW941530 | EB 1: PTW Main Cable Test and Termination | 10 | 25JUN2013 | 06JUL2013 | 25JUN2013 | 27MAY2013 | -33d | | | | |
| EMW941700 | EB 1: MCC Rm. LVSB A2 Energization | 3 | 17JUL2013 | 19JUL2013 | 05JUN2013 | 07JUN2013 | -34d | | | | |
| EMW941710 | EB 1: PTW MCC Energization | 7 | 20JUL2013 | 27JUL2013 | 08JUN2013 | 17JUN2013 | -34d | | | | |
| EMW941720 | Elect Bldg 1: Admin DB Energization | 7 | 20JUL2013 | 27JUL2013 | 19JUL2013 | 26JUL2013 | -1d | | | | |
| EMW942700 | CB Main SW Rm EB2 LVSB C Energization | 10 | 17JUL2013 | 27JUL2013 | 13JUN2013 | 24JUN2013 | -28d | | | | |
| EMW942710 | CB Main SW Rm CEPT MCC Energization | 10 | 29JUL2013 | 08AUG2013 | 25JUN2013 | 06JUL2013 | -28d | | | | |
| EMW942720 | CB Main SW Rm Chemical MCC Energization | 10 | 29JUL2013 | 08AUG2013 | 27JUN2013 | 09JUL2013 | -26d | | | | |
| EMW942730 | CB Main SW Rm Sludge MCC Energization | 10 | 29JUL2013 | 08AUG2013 | 12JUL2013 | 23JUL2013 | -14d | | | | |
| EMW942740 | CB Main SW Rm DOUA MCC Energization | 10 | 29JUL2013 | 08AUG2013 | 04JUL2013 | 15JUL2013 | -21d | | | | |
| EMW943700 | Elect Bldg 3: EB3 LVSB D Energization | 3 | 17JUL2013 | 19JUL2013 | 09JUL2013 | 11JUL2013 | -7d | | | | |
| EMW943710 | Elect Bldg 3: UV MCC Panel Energization | 7 | 20JUL2013 | 27JUL2013 | 26JUL2013 | 02AUG2013 | 5d | | | | |
| EMW943720 | Elect Bldg 3: DOUB MCC Panel Energization | 7 | 20JUL2013 | 27JUL2013 | 22JUL2013 | 29JUL2013 | 1d | | | | |
| EMW944200 | OFPS: Delivery of Mat'l & Equipment | 30 | 28FEB2013 | 04JUL2013 | 28FEB2013 | 21MAY2013 | -44d | | | | |
| EMW944400 | OFPS: Install B1B2 panel | 40 | 05JUL2013 | 20AUG2013 | 24JUL2013 | 09SEP2013 | 17d | | | | |
| EMW944510 | OFPS: Cable Containment Installation | 40 | 17JUL2013 | 31AUG2013 | 05AUG2013 | 21SEP2013 | 17d | | | | |
| EMW944520 | OFPS: Cable Laying | 30 | 08JUL2013 | 10AUG2013 | 28MAY2013 | 03JUL2013 | -33d | | | | |
| EMW944530 | OFPS: Cable Test and Termination | 40 | 13JUL2013 | 28AUG2013 | 03JUN2013 | 20JUL2013 | -33d | | | | |
| EMW944600 | OFPS: SCADA System Installation | 60 | 28JUN2013 | 06SEP2013 | 18MAY2013 | 29JUL2013 | -34d | | | | |
| EMW944610 | OFPS: BS System Installation | 50 | 05JUL2013 | 31AUG2013 | 22MAY2013 | 20JUL2013 | -36d | | | | |
| EMW944700 | OFPS: B1B2 Energization | 3 | 02SEP2013 | 04SEP2013 | 22JUL2013 | 24JUL2013 | -36d | | | | |
| EMW944710 | OFPS: RWMCC2 Panel Energization | 7 | 02SEP2013 | 09SEP2013 | 22JUL2013 | 29JUL2013 | -36d | | | | |
| EMW944720 | OFPS: DOUB MCC 2 Panel Energization | 7 | 02SEP2013 | 09SEP2013 | 22JUL2013 | 29JUL2013 | -36d | | | | |
| EMW951020 | Outdoor: Lighting East of PTW Area | 10 | 11SEP2013 | 23SEP2013 | 29OCT2013 | 08NOV2013 | 38d | | | | |
| EMW951030 | Outdoor: Lighting South of CEPT Area | 10 | 24SEP2013 | 05OCT2013 | 09NOV2013 | 20NOV2013 | 38d | | | | |
| Testing and Commissioning | | | | | | | | | | | |
| PTW Testing and Commissioning | | | | | | | | | | | |
| Building and Structures | | | | | | | | | | | |
| EMT101210 | PTW T&C Phase 1: Site Test -Coarse Screen | 40 | 27MAY2013 | 08JUL2013 | 27MAY2013 | 07JUL2013 | -1d | | | | |
| EMT101220 | PTW T&C Phase 1: Site Test - Inlet Pump System | 40 | 02JUN2013 | 10JUL2013 | 02JUN2013 | 17JUN2013 | -23d | | | | |
| EMT101230 | PTW T&C Phase 1: Site Test - Fine Screen System | 40 | 27MAY2013 | 09JUL2013 | 27MAY2013 | 07JUL2013 | -2d | | | | |
| EMT101240 | PTW T&C Phase 1: Site Test - Grit System | 40 | 31MAY2013 | 09JUL2013 | 31MAY2013 | 07JUL2013 | -2d | | | | |
| EMT102310 | PTW Phase 2: Dry Test of Coarse Screen System | 25 | 28JUL2013 | 21AUG2013 | 08JUL2013 | 01AUG2013 | -20d | | | | |
| EMT102320 | PTW Phase 2: Dry Testing of Inlet Pump System | 5 | 28JUL2013 | 01AUG2013 | 18JUN2013 | 22JUN2013 | -40d | | | | |
| EMT102330 | PTW Phase 2: Dry Testing of Fine Screen System | 25 | 28JUL2013 | 21AUG2013 | 08JUL2013 | 01AUG2013 | -20d | | | | |
| EMT102340 | PTW Phase 2: Dry Testing of Grit System | 25 | 28JUL2013 | 21AUG2013 | 08JUL2013 | 01AUG2013 | -20d | | | | |
| EMT103410 | PTW Phase 3: Wet Testing of PTW CS FS & GC | 30 | 25AUG2013 | 23SEP2013 | 02AUG2013 | 31AUG2013 | -23d | | | | |
| EMT103412 | PTW Phase 3: Wet Testing Inlet Pump | 30 | 02AUG2013 | 31AUG2013 | 23JUN2013 | 22JUL2013 | -40d | | | | |
| EMT103415 | PTW Phase 3: Remove Recirculation System | 10 | 01SEP2013 | 10SEP2013 | 23JUL2013 | 01AUG2013 | -40d | | | | |
| EMT103420 | PTW Phase 3: Manual Testing of PTW-system | 30 | 11SEP2013 | 10OCT2013 | 02AUG2013 | 31AUG2013 | -40d | | | | |
| CEPT Testing and Commissioning | | | | | | | | | | | |
| Building and Structures | | | | | | | | | | | |
| EMT201200 | CEPT Tank Phase 1: Densadeg 1 Insp & test | 60 | 27MAY2013 | 12JUL2013 | 27MAY2013 | 06JUL2013 | -6d | | | | |
| EMT201300 | CEPT Tank Phase 1: Densadeg 2 Insp & test | 60 | 16JUN2013 | 22JUL2013 | 16JUN2013 | 01JUL2013 | -21d | | | | |
| EMT201400 | CEPT Tank Phase 1: Densadeg 3 Insp & test | 60 | 11JUL2013 | 08SEP2013 | 07JUN2013 | 05AUG2013 | -34d | | | | |
| EMT201500 | CEPT Tank Phase 1: Densadeg 4 Insp & test | 60 | 23JUL2013 | 20SEP2013 | 07JUN2013 | 05AUG2013 | -46d | | | | |
| EMT201600 | CEPT Tank Phase 1: Densadeg 5 Insp & test | 60 | 26JUL2013 | 23SEP2013 | 22JUN2013 | 20AUG2013 | -34d | | | | |
| EMT201700 | CEPT Tank Phase 1: Pump Hall Systems Insp & test | 60 | 28MAY2013 | 30JUL2013 | 28MAY2013 | 06JUL2013 | -24d | | | | |
| EMT201800 | CEPT Tank Phase 1: Elect&Control Insp & test | 30 | 27MAY2013 | 27JUL2013 | 27MAY2013 | 06JUL2013 | -21d | | | | |
| EMT201900 | CEPT Tank Phase 1: BS Insp & test | 60 | 27MAY2013 | 28JUL2013 | 27MAY2013 | 06JUL2013 | -22d | | | | |
| EMT202100 | CEPT Tank: Phase 2 - Dry Test of Individual Eq't | 30 | 22AUG2013 | 20SEP2013 | 07JUL2013 | 05AUG2013 | -46d | | | | |
| EMT203100 | CEPT Tank Phase 3: Wet Testing of Individual Eq't | 30 | 26SEP2013 | 25OCT2013 | 30JUL2013 | 28AUG2013 | -58d | | | | |
| EMT203200 | CEPT Tank Phase 3: Manual Test Sub-system | 30 | 06OCT2013 | 04NOV2013 | 09AUG2013 | 07SEP2013 | -58d | | | | |
| UV Disinfection Facilities | | | | | | | | | | | |
| Building and Structures | | | | | | | | | | | |
| EMT301100 | UV: Phase 1 - Installation Inspection | 50 | 04JUL2013 | 22AUG2013 | 27MAY2013 | 15JUL2013 | -38d | | | | |
| EMT302100 | UV: Phase 2 - Dry Test of Individual Eq't | 30 | 23AUG2013 | 21SEP2013 | 16JUL2013 | 14AUG2013 | -38d | | | | |
| EMT303100 | UV: Phase 3 - Wet Test of Individual Eq't | 30 | 22SEP2013 | 21OCT2013 | 15AUG2013 | 13SEP2013 | -38d | | | | |
| Reuse Water Pumping Station | | | | | | | | | | | |
| Building and Structures | | | | | | | | | | | |
| EMT321100 | RWPS: Phase 1 - Installation Inspection | 20 | 07SEP2013 | 26SEP2013 | 14JUL2013 | 02AUG2013 | -55d | | | | |
| EMT322100 | RWPS: Phase 2 - Dry Test of Individual Eq't | 30 | 29SEP2013 | 28OCT2013 | 03AUG2013 | 01SEP2013 | -57d | | | | |
| Chemical Building | | | | | | | | | | | |
| Building and Structures | | | | | | | | | | | |
| EMT501100 | Chemical: Phase 1 - Installation Inspection | 50 | 27MAY2013 | 22JUL2013 | 27MAY2013 | 09JUL2013 | -13d | | | | |
| EMT502100 | Chemical: Phase 2 - Dry Test of Individual Eq't | 30 | 09AUG2013 | 07SEP2013 | 10JUL2013 | 08AUG2013 | -30d | | | | |
| EMT503100 | Chemical: Phase 3 - Wet Test of Individual Eq't | 30 | 05OCT2013 | 03NOV2013 | 09AUG2013 | 07SEP2013 | -57d | | | | |

| | |
|---------------------------|-----------|
| Start date | 14JUL2010 |
| Finish date | 24JUN2014 |
| Data date | 28JUN2013 |
| Run date | 01AUG2013 |
| Page number | 12A |
| Project name | PR34 |
| c Primavera Systems, Inc. | |

| | |
|--|------------------------|
| | Early bar |
| | Progress bar |
| | Critical bar |
| | Summary bar |
| | Start milestone point |
| | Finish milestone point |

| Activity ID | Description | Original Duration | Early Start | Early Finish | Late Start | Late Finish | Total Float | 2013 | | 2014 | |
|---|--|-------------------|-------------|--------------|------------|-------------|-------------|------|----|------|----|
| | | | | | | | | Q3 | Q4 | Q1 | Q2 |
| Sludge Dewatering and Skip Storage | | | | | | | | | | | |
| Building and Structures | | | | | | | | | | | |
| EMT 601100 | Sludge: Phase 1 - Installation Inspection | 40 | 03AUG2013 | 11SEP2013 | 14JUN2013 | 23JUL2013 | -50d | | | | |
| EMT 601110 | Sludge: Phase 1 - Sludge System Insp. | 30 | 11JUL2013 | 09AUG2013 | 24JUN2013 | 23JUL2013 | -17d | | | | |
| EMT 601120 | Sludge: Phase 1 - Polymer System Insp. | 30 | 17JUL2013 | 15AUG2013 | 10JUN2013 | 09JUL2013 | -37d | | | | |
| EMT 601130 | Sludge: Phase 1 - Centrifuge Inspection | 30 | 07AUG2013 | 05SEP2013 | 24JUN2013 | 23JUL2013 | -44d | | | | |
| EMT 601140 | Sludge: Phase 1 - Convey. sys. Inspection | 30 | 05JUL2013 | 03AUG2013 | 24JUN2013 | 23JUL2013 | -11d | | | | |
| EMT 602100 | Sludge: Phase 2 - Dry Test of Individual Eq't | 30 | 12SEP2013 | 11OCT2013 | 24JUL2013 | 22AUG2013 | -50d | | | | |
| Septic Waste Collection facilities | | | | | | | | | | | |
| Building and Structures | | | | | | | | | | | |
| EMT 151100 | Septic Station: Phase 1- Installation Inspection | 30 | 17JUL2013 | 15AUG2013 | 05JUN2013 | 04JUL2013 | -42d | | | | |
| EMT 152100 | Septic Station: Phase 2 - Dry Test Indiv Eq't | 30 | 16AUG2013 | 14SEP2013 | 05JUL2013 | 03AUG2013 | -42d | | | | |
| EMT 153100 | Septic Station: Phase 3 - Wet Test of Indiv Eq't | 30 | 15SEP2013 | 14OCT2013 | 04AUG2013 | 02SEP2013 | -42d | | | | |
| EMT 153200 | Septic Station: Phase 3 - Manual Test Sub-system | 30 | 30SEP2013 | 29OCT2013 | 19AUG2013 | 17SEP2013 | -42d | | | | |
| DOU A | | | | | | | | | | | |
| Building and Structures | | | | | | | | | | | |
| EMT 711100 | DOU A: Phase 1 - Installation Inspection | 40 | 11JUL2013 | 19AUG2013 | 06JUN2013 | 15JUL2013 | -35d | | | | |
| EMT 712100 | DOU A: Phase 2 - Dry Test of Individual Eq't | 30 | 02SEP2013 | 01OCT2013 | 16JUL2013 | 14AUG2013 | -48d | | | | |
| EMT 713100 | DOU A: Phase 3 - Wet Test of Individual Eq't | 30 | 02OCT2013 | 31OCT2013 | 15AUG2013 | 13SEP2013 | -48d | | | | |
| DOU B | | | | | | | | | | | |
| Building and Structures | | | | | | | | | | | |
| EMT 720220 | DOU B: Phase 1 - Installation Inspection | 40 | 23JUL2013 | 31AUG2013 | 20JUN2013 | 29JUL2013 | -33d | | | | |
| EMT 722100 | DOU B: Phase 2 - Dry Test of Individual Eq't | 20 | 26SEP2013 | 15OCT2013 | 30JUL2013 | 18AUG2013 | -58d | | | | |
| Control System | | | | | | | | | | | |
| Building and Structures | | | | | | | | | | | |
| EMT 811111 | Control/SCADA: Phase 1 - Insp SCADA Admin | 30 | 27JUL2013 | 25AUG2013 | 06AUG2013 | 04SEP2013 | 10d | | | | |
| EMT 811112 | Control/SCADA: Phase 1 - Insp PLC LCP PTW | 30 | 28JUN2013 | 27JUL2013 | 03JUL2013 | 01AUG2013 | 5d | | | | |
| EMT 811113 | Control/SCADA: Phase 1 - Insp PLC LCP CEPT | 30 | 11JUL2013 | 09AUG2013 | 30JUN2013 | 29JUL2013 | -11d | | | | |
| EMT 811114 | Control/SCADA: Phase 1 - Insp PLC LCP UV RW | 30 | 03AUG2013 | 01SEP2013 | 16JUL2013 | 14AUG2013 | -18d | | | | |
| EMT 811115 | Control/SCADA: Phase 1 - Insp PLC LCP CHEM | 30 | 05JUL2013 | 03AUG2013 | 10JUL2013 | 08AUG2013 | 5d | | | | |
| EMT 811116 | Control/SCADA: Phase 1 - Insp PLC LCP SDW | 30 | 23JUL2013 | 21AUG2013 | 24JUL2013 | 22AUG2013 | 1d | | | | |
| EMT 811117 | Control/SCADA: Phase 1 - Insp PLC LCP DOUA | 30 | 03AUG2013 | 01SEP2013 | 16JUN2013 | 15JUL2013 | -48d | | | | |
| EMT 811118 | Control/SCADA: Phase 1 - Insp PLC LCP DOUB | 30 | 27AUG2013 | 25SEP2013 | 30JUN2013 | 29JUL2013 | -58d | | | | |
| EMT 811119 | Control/SCADA: Phase 1 - Insp PLC LCP OFPS | 30 | 27AUG2013 | 25SEP2013 | 15SEP2013 | 14OCT2013 | 19d | | | | |
| EMT 812122 | Control/SCADA: Phase 2 - PLC LCP PTW | 30 | 28JUL2013 | 26AUG2013 | 02AUG2013 | 31AUG2013 | 5d | | | | |
| EMT 812123 | Control/SCADA: Phase 2 - PLC LCP CEPT | 30 | 10AUG2013 | 08SEP2013 | 30JUL2013 | 28AUG2013 | -11d | | | | |
| EMT 812124 | Control/SCADA: Phase 2 - PLC LCP UV RW | 30 | 02SEP2013 | 01OCT2013 | 15AUG2013 | 13SEP2013 | -18d | | | | |
| EMT 812125 | Control/SCADA: Phase 2 - PLC LCP CHEM | 30 | 04AUG2013 | 02SEP2013 | 09AUG2013 | 07SEP2013 | 5d | | | | |
| EMT 812126 | Control/SCADA: Phase 2 - PLC LCP SDW | 30 | 22AUG2013 | 20SEP2013 | 23AUG2013 | 21SEP2013 | 1d | | | | |
| EMT 812127 | Control/SCADA: Phase 2 - PLC LCP DOUA | 30 | 02SEP2013 | 01OCT2013 | 16JUL2013 | 14AUG2013 | -48d | | | | |
| EMT 812128 | Control/SCADA: Phase 2 - PLC LCP DOUB | 30 | 26SEP2013 | 25OCT2013 | 30JUL2013 | 28AUG2013 | -58d | | | | |
| EMT 812129 | Control/SCADA: Phase 2 - PLC LCP OFPS | 30 | 26SEP2013 | 25OCT2013 | 15OCT2013 | 13NOV2013 | 19d | | | | |
| EMT 813102 | Control/SCADA: Phase 3 - SAT PLC LCP PTW | 30 | 27AUG2013 | 25SEP2013 | 14NOV2013 | 13DEC2013 | 79d | | | | |
| EMT 813103 | Control/SCADA: Phase 3 - SAT PLC LCP CEPT | 30 | 09SEP2013 | 08OCT2013 | 14NOV2013 | 13DEC2013 | 66d | | | | |
| EMT 813104 | Control/SCADA: Phase 3 - SAT PLC LCP UV RW | 30 | 02OCT2013 | 31OCT2013 | 14NOV2013 | 13DEC2013 | 43d | | | | |
| EMT 813105 | Control/SCADA: Phase 3 - SAT PLC LCP CHEM | 30 | 03SEP2013 | 02OCT2013 | 14NOV2013 | 13DEC2013 | 72d | | | | |
| EMT 813106 | Control/SCADA: Phase 3 - SAT PLC LCP SDW | 30 | 21SEP2013 | 20OCT2013 | 14NOV2013 | 13DEC2013 | 54d | | | | |
| EMT 813107 | Control/SCADA: Phase 3 - SAT PLC LCP DOUA | 30 | 02OCT2013 | 31OCT2013 | 14NOV2013 | 13DEC2013 | 43d | | | | |
| Building Services | | | | | | | | | | | |
| Building and Structures | | | | | | | | | | | |
| EMT 831000 | BS: Phase 1 - Installation Inspection | 30 | 09AUG2013 | 07SEP2013 | 07JUL2013 | 05AUG2013 | -33d | | | | |
| EMT 832000 | BS: Phase 2 - Dry Test of Individual Eq't | 30 | 29AUG2013 | 27SEP2013 | 27JUL2013 | 25AUG2013 | -33d | | | | |
| EMT 833000 | BS: Phase 3 - Wet Test of Individual Eq't | 30 | 18SEP2013 | 17OCT2013 | 16AUG2013 | 14SEP2013 | -33d | | | | |
| EMT 835000 | BS: Phase 3 - Manual Testing of Sub-system | 30 | 03OCT2013 | 01NOV2013 | 31AUG2013 | 29SEP2013 | -33d | | | | |

| | |
|---------------------------|-----------|
| Start date | 14JUL2010 |
| Finish date | 24JUN2014 |
| Data date | 28JUN2013 |
| Run date | 01AUG2013 |
| Page number | 13A |
| Project name | PR34 |
| © Primavera Systems, Inc. | |

| | |
|--|------------------------|
| | Early bar |
| | Progress bar |
| | Critical bar |
| | Summary bar |
| | Start milestone point |
| | Finish milestone point |