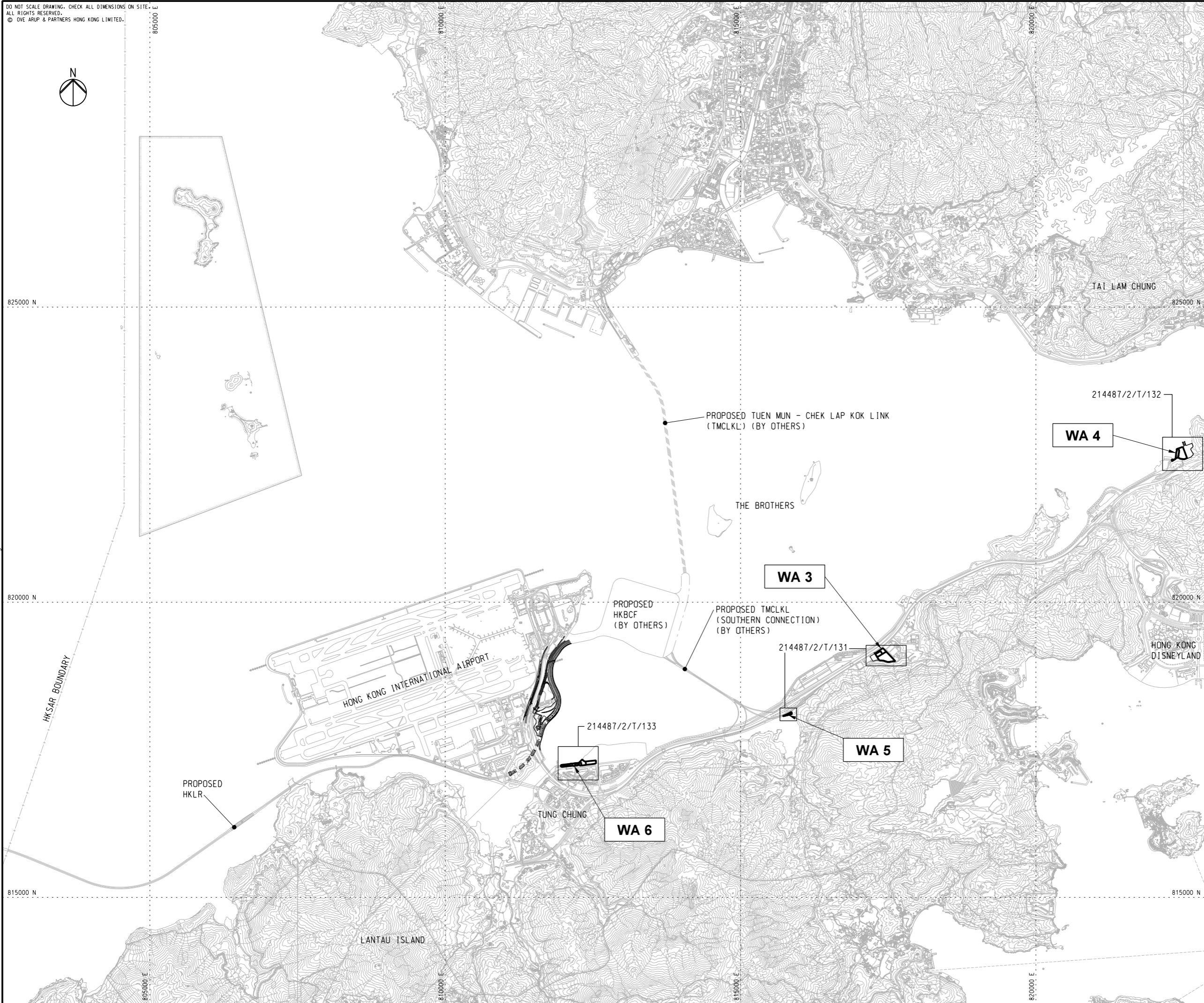


DO NOT SCALE DRAWING. CHECK ALL DIMENSIONS ON SITE.
 ALL RIGHTS RESERVED.
 © OVE ARUP & PARTNERS HONG KONG LIMITED.



1. THIS DRAWING SHALL BE READ IN CONJUNCTION WITH DRG. NOS. 214487/2/T/131 - 133.

| | | | |
|-----|--------------|----|-------|
| | | | |
| A | TENDER ISSUE | IL | 02/12 |
| Rev | Description | By | Date |

Consultant
ARUP 奧雅納工程顧問
 Ove Arup & Partners Hong Kong Limited

Contract No. and Title:
 Contract No. HY/2011/03
Hong Kong-Zhuhai-Macao Bridge
 Hong Kong Link Road -
 Section Between Scenic Hill and
 Hong Kong Boundary Crossing Facilities

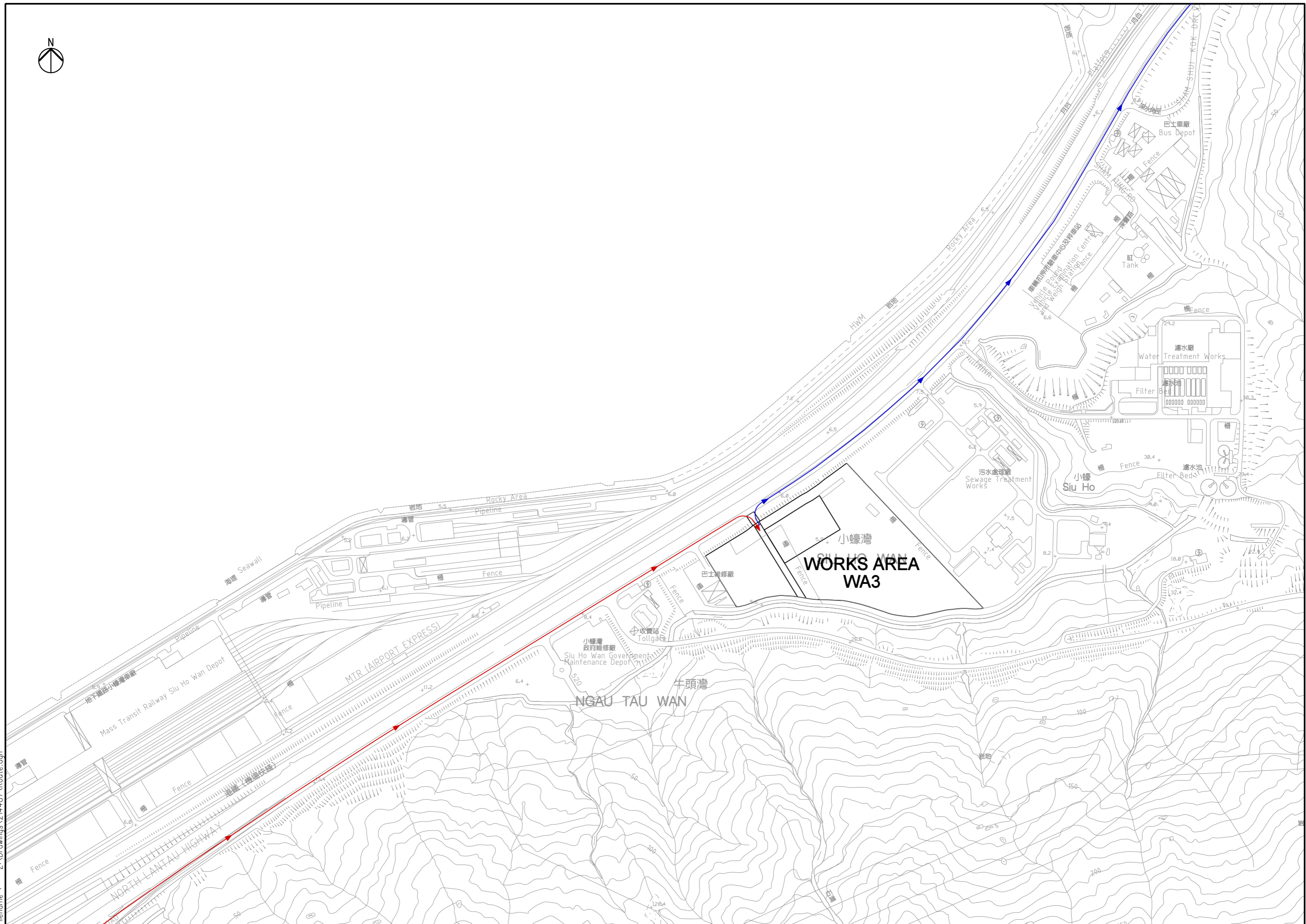
Drawing title
WORKS AREAS
KEY PLAN

| | | | | | |
|-------------|-------------|----------------|----------|--------|---|
| Drawing no. | | 214487/2/T/130 | | Rev. | A |
| Drawn | Date | Checked | Approved | | |
| RY | 02/12 | IL | SK | | |
| Scale | 1:30000 @A1 | | Status | TENDER | |

COPYRIGHT RESERVED



Printed by : 13/2/2012
 Filename : J:\214487\Record\HY_2011_03\Re-Tender (2012-02-17)\DGN\HY_2011_03-DRG_130-A-10.dgn



Printed by : 30/5/2012
Filename : Z:\Drawings\214487\Route.dgn

Mass Transit Railway Siu Ho Wan Depot

MTR (AIRPORT EXPRESS)

NGAU TAU WAN

WORKS AREA WA3

Water Treatment Works

Sewage Treatment Works

Siu Ho

Bus Depot

Siu Ho Wan Government Maintenance Depot

牛頭灣

巴士維修廠

小蠔灣

NORTH LANTAU HIGHWAY

海墘 Seawall

Rocky Area

Vehicle Foundry

濾水廠

濾水池

Filter Bed

濾水池

濾水池

濾水池

濾水池

濾水池

濾水池

濾水池

濾水池

濾水池

濾水池

濾水池

濾水池

濾水池

濾水池

濾水池

濾水池

濾水池

濾水池

濾水池

濾水池

濾水池

濾水池

濾水池

濾水池

濾水池

濾水池

濾水池

濾水池

濾水池

濾水池

濾水池

濾水池

濾水池

濾水池

濾水池

濾水池

濾水池

濾水池

濾水池

濾水池

濾水池

濾水池

濾水池

濾水池

濾水池

濾水池

濾水池

濾水池

濾水池

濾水池

濾水池

濾水池

濾水池

濾水池

濾水池

濾水池

濾水池

濾水池

濾水池

濾水池

濾水池

濾水池

濾水池

濾水池

濾水池

濾水池

濾水池

濾水池

濾水池

濾水池

濾水池

濾水池

濾水池

濾水池

濾水池

濾水池

濾水池

濾水池

濾水池

濾水池

濾水池

濾水池

濾水池

濾水池

濾水池

濾水池

濾水池

濾水池

濾水池

濾水池

濾水池

濾水池

濾水池

濾水池

濾水池

濾水池

濾水池

濾水池

濾水池

濾水池

濾水池

濾水池

濾水池

濾水池

濾水池

濾水池

濾水池

濾水池

濾水池

濾水池

濾水池

濾水池

濾水池

濾水池

濾水池

濾水池

濾水池

濾水池

濾水池

濾水池

濾水池

濾水池

濾水池

濾水池

濾水池

濾水池

濾水池

濾水池

濾水池

濾水池

濾水池

濾水池

濾水池

濾水池

濾水池

濾水池

濾水池

濾水池

濾水池

濾水池

濾水池

濾水池

濾水池

濾水池

濾水池

濾水池

濾水池

濾水池

濾水池

濾水池

濾水池

濾水池

濾水池

濾水池

濾水池

濾水池

濾水池

濾水池

濾水池

濾水池

濾水池

濾水池

濾水池

濾水池

濾水池

濾水池

濾水池

濾水池

濾水池

濾水池

濾水池

濾水池

濾水池

濾水池

濾水池

濾水池

濾水池

濾水池

濾水池

濾水池

濾水池

濾水池

濾水池

濾水池

濾水池

濾水池

濾水池

濾水池

濾水池

濾水池

濾水池

濾水池

濾水池

濾水池

濾水池

濾水池

濾水池

濾水池

濾水池

濾水池

濾水池

濾水池

濾水池

濾水池

濾水池

濾水池

濾水池

濾水池

濾水池

濾水池

濾水池

濾水池

濾水池

濾水池

濾水池

濾水池

濾水池

濾水池

濾水池

濾水池

濾水池

濾水池

濾水池

濾水池

濾水池

濾水池

濾水池

濾水池

濾水池

濾水池

濾水池

濾水池

濾水池

濾水池

濾水池

濾水池

濾水池

濾水池

濾水池

濾水池

濾水池

濾水池

濾水池

濾水池

濾水池

濾水池

濾水池

濾水池

濾水池

濾水池

濾水池

濾水池

濾水池

濾水池

濾水池

濾水池

濾水池

濾水池

濾水池

濾水池

濾水池

濾水池

濾水池

濾水池

濾水池

濾水池

濾水池

濾水池

濾水池

濾水池

濾水池

濾水池

濾水池

濾水池

濾水池

濾水池

濾水池

濾水池

濾水池

濾水池

濾水池

濾水池

濾水池

濾水池

濾水池

濾水池

濾水池

濾水池

濾水池

濾水池

濾水池

濾水池

濾水池

濾水池

濾水池

濾水池

濾水池

濾水池

濾水池

濾水池

濾水池

濾水池

濾水池

濾水池

濾水池

濾水池

濾水池

濾水池

濾水池

濾水池

濾水池

濾水池

濾水池

濾水池

濾水池

濾水池

濾水池

濾水池

濾水池

濾水池

濾水池

濾水池

濾水池

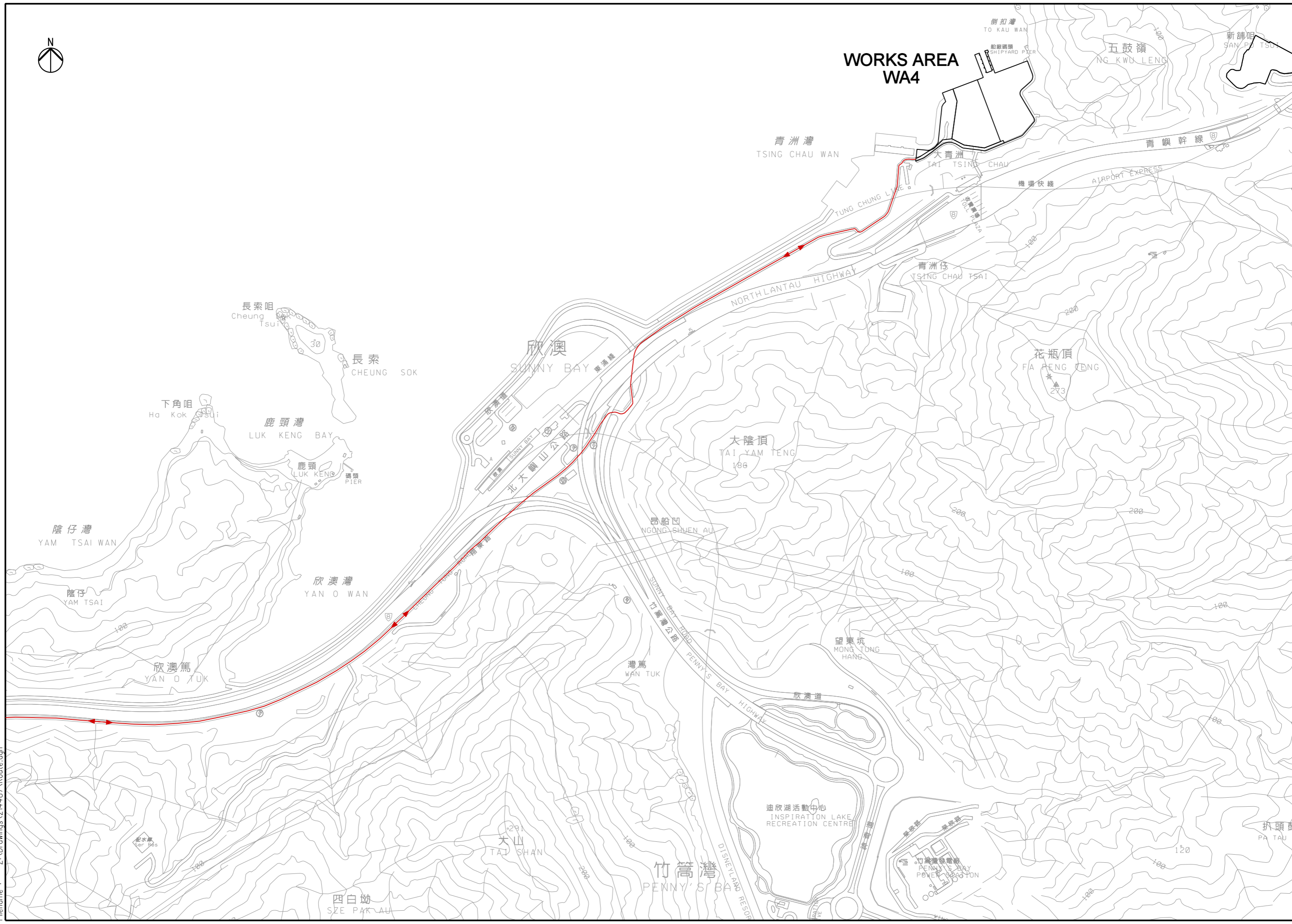
濾水池

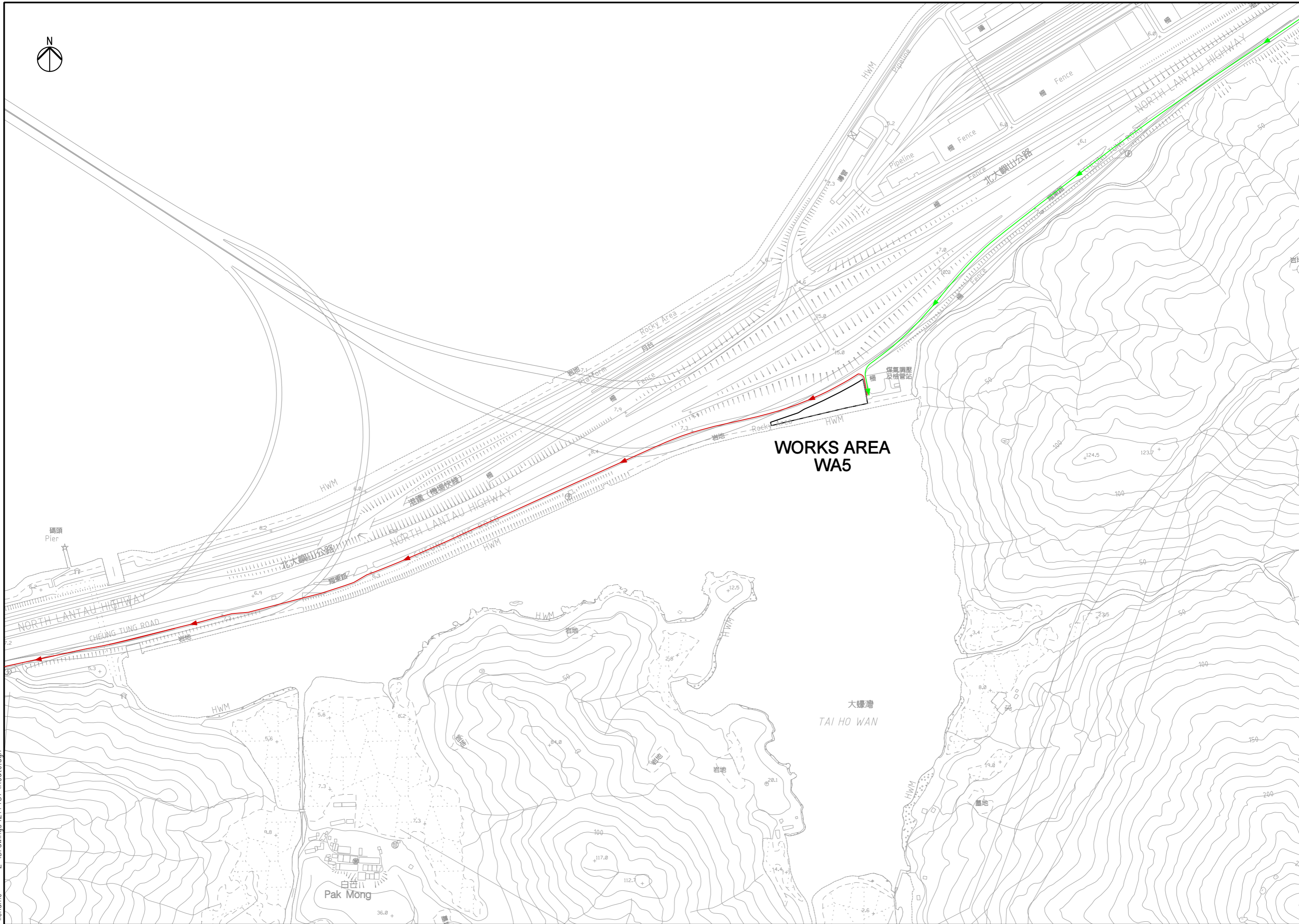
濾水池

濾水池

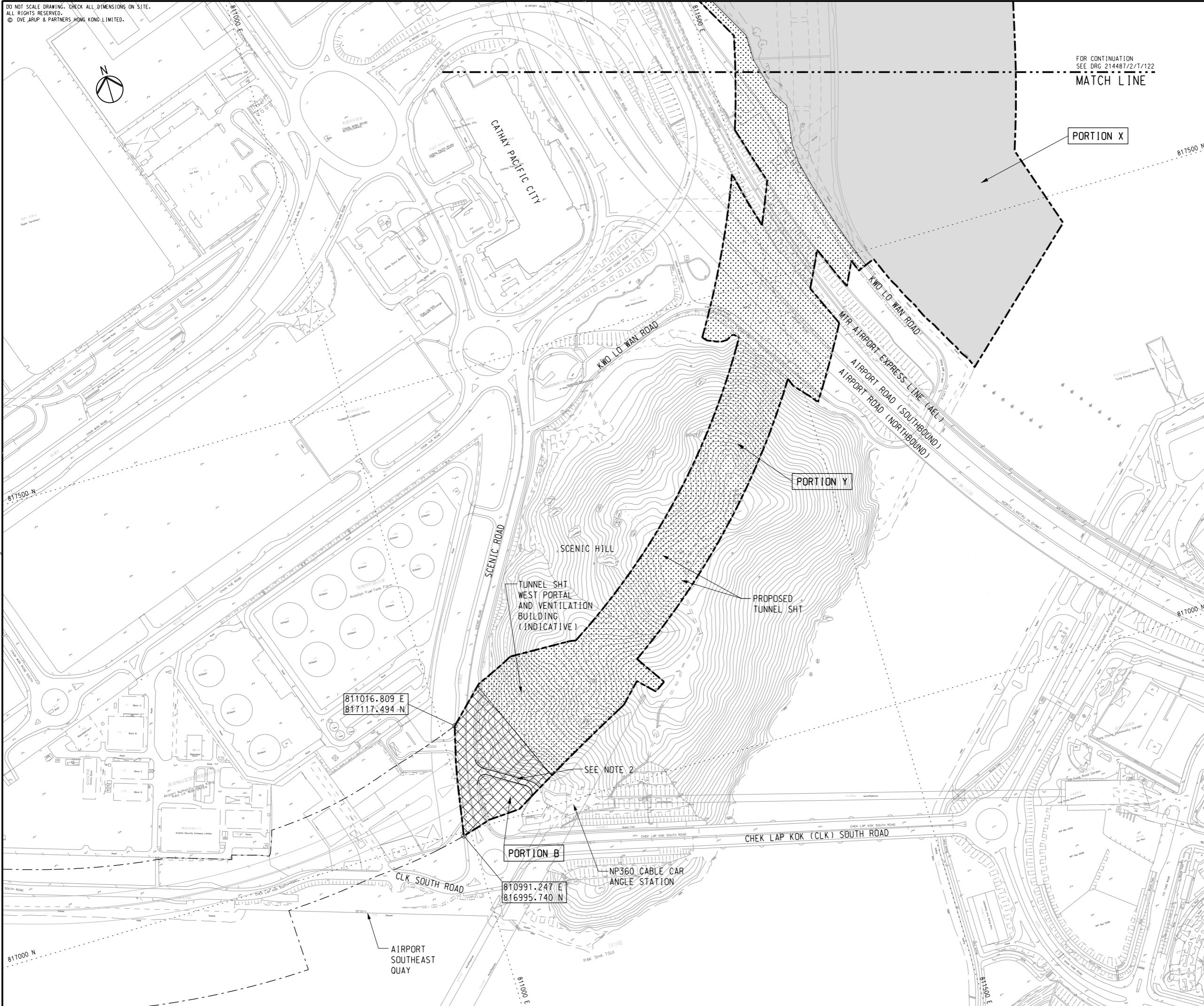


WORKS AREA WA4





DO NOT SCALE DRAWING. CHECK ALL DIMENSIONS ON SITE.
ALL RIGHTS RESERVED.
© OVE ARUP & PARTNERS HONG KONG LIMITED.



NOTES

- FOR DETAILED DESCRIPTION OF PORTION OF SITE, REFER TO ER PART 2 GENERAL SITE DATA.
- ACCESS ROAD TO NP360 CABLE CAR ANGLE STATION SHALL BE MAINTAINED AT ALL TIMES.

LEGEND

- SITE BOUNDARY
- PORTION X
- PORTION Y
- PORTION B
- PORTION C
- PORTION D1

Printed by : 13/2/2012
Filename : J:\214487\Record\HY_2011_03\Re-Tender (2012-02-17)\DGN\E-HY_2011_03-DRG-121-A-10.dgn

| | | | |
|-----|--------------|----|-------|
| A | TENDER ISSUE | IL | 02/12 |
| Rev | Description | By | Date |

Consultant
ARUP 奧雅納工程顧問
Ove Arup & Partners Hong Kong Limited

Contract No. and Title:
Contract No. HY/2011/03
Hong Kong-Zhuhai-Macao Bridge
Hong Kong Link Road -
Section Between Scenic Hill and
Hong Kong Boundary Crossing Facilities

Drawing title
**PORTION OF SITE
(SHEET 1 OF 3)**

| | | | |
|----------------------------|------------|------------|-------------|
| Drawing no. 214487/2/T/121 | | Rev. A | |
| Drawn RY | Date 02/12 | Checked IL | Approved SK |
| Scale 1:2000 @A1 | Status | TENDER | |

COPYRIGHT RESERVED

路政署
HIGHWAYS DEPARTMENT
港珠澳大橋香港工程管理局
Hong Kong - Zhuhai - Macao Bridge
Hong Kong Project Management Office

DO NOT SCALE DRAWING. CHECK ALL DIMENSIONS ON SITE.
ALL RIGHTS RESERVED.
© OVE ARUP & PARTNERS HONG KONG LIMITED.



HONG KONG INTERNATIONAL AIRPORT
SOUTH RUNWAY

PORTION Y

CIVIL AVIATION DEPARTMENT
(CAD) NEW HEADQUARTERS

FOR CONTINUATION
SEE DRG 214487/2/T/123

MATCH LINE

NOTES

1. FOR GENERAL NOTES AND LEGEND, REFER TO
DRG. NO. 214487/2/T/121.

EXISTING
DRAGONAIR
HEADQUARTERS

EXISTING
CNAC TOWER

PORTION X

MATCH LINE

FOR CONTINUATION
SEE DRG 214487/2/T/121

| | | | |
|-----|--------------|----|-------|
| A | TENDER ISSUE | IL | 02/12 |
| Rev | Description | By | Date |

Consultant
ARUP 奧雅納工程顧問
Ove Arup & Partners Hong Kong Limited

Contract No. and Title:
Contract No. HY/2011/03
Hong Kong-Zhuhai-Macao Bridge
Hong Kong Link Road -
Section Between Scenic Hill and
Hong Kong Boundary Crossing Facilities

Drawing title
PORTION OF SITE
(SHEET 2 OF 3)

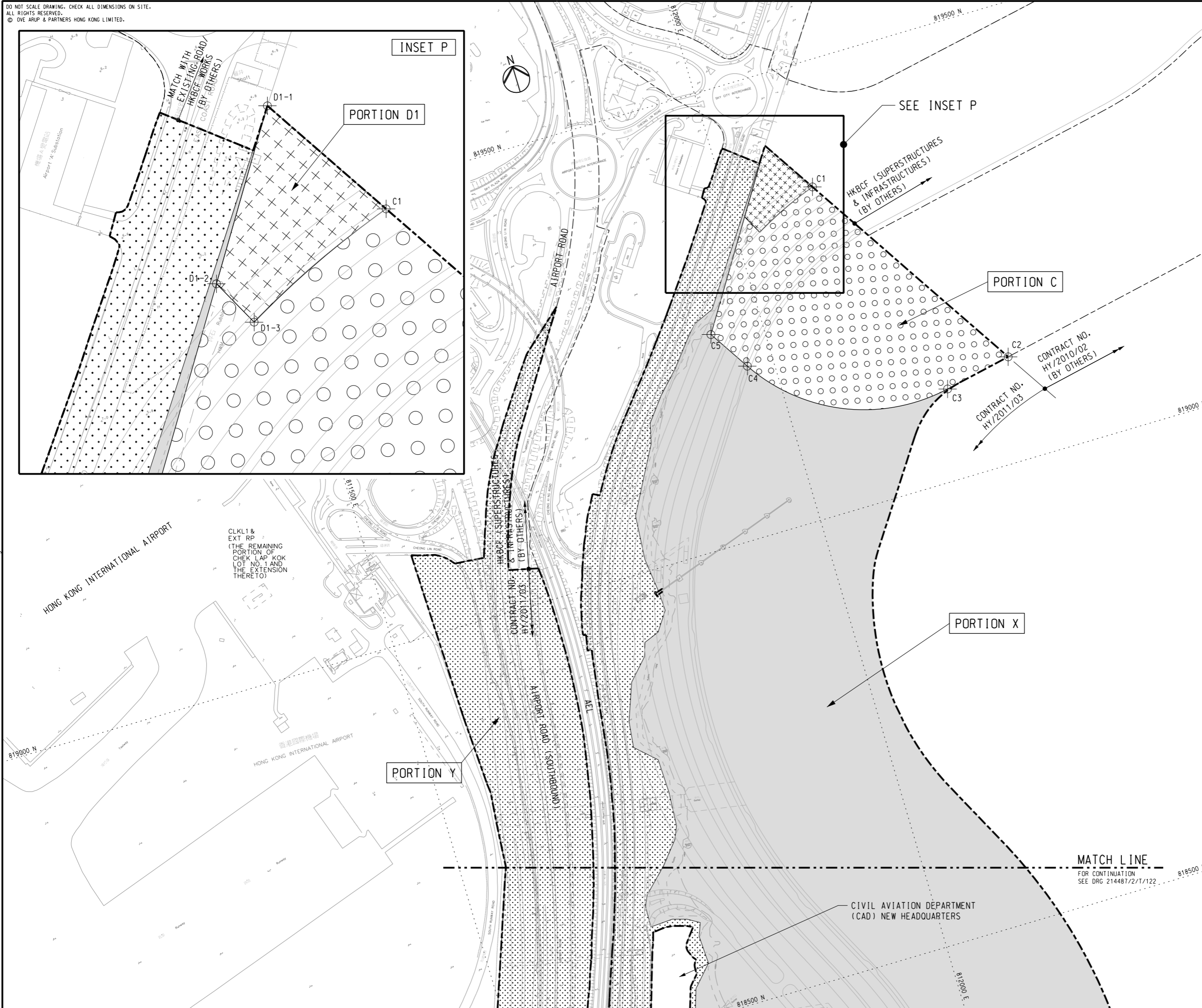
| | | | |
|-------------|----------------|----------|--------|
| Drawing no. | 214487/2/T/122 | Rev. | A |
| Drawn | RY | Date | 02/12 |
| Checked | IL | Approved | SK |
| Scale | 1:2000 @A1 | Status | TENDER |

COPYRIGHT RESERVED



Printed by : 13/2/2012
Filename : J:\214487\Record\HY_2011_03\Re-Tender (2012-02-17)\DGN\HY_2011_03-DRG_122-A-10.dgn

DO NOT SCALE DRAWING. CHECK ALL DIMENSIONS ON SITE.
ALL RIGHTS RESERVED.
© OVE ARUP & PARTNERS HONG KONG LIMITED.



NOTES
1. FOR GENERAL NOTES AND LEGEND, REFER TO DRG. NO. 214487/2/T/121.

SETTING OUT CO-ORDINATES OF SITE PORTION C

| POINT | CO-ORDINATES | |
|-------|--------------|------------|
| | EASTING | NORTHING |
| C1 | 812097.481 | 819361.966 |
| C2 | 812254.199 | 819116.562 |
| C3 | 812178.695 | 819101.208 |
| C4 | 811970.282 | 819189.551 |
| C5 | 811941.125 | 819235.206 |

SETTING OUT CO-ORDINATES OF SITE PORTION D1

| POINT | CO-ORDINATES | |
|-------|--------------|------------|
| | EASTING | NORTHING |
| D1-1 | 812059.460 | 819421.497 |
| D1-2 | 812014.853 | 819351.273 |
| D1-3 | 812026.200 | 819329.938 |

| Rev | Description | By | Date |
|-----|--------------|----|-------|
| A | TENDER ISSUE | IL | 02/12 |

Consultant
ARUP 奧雅納工程顧問
Ove Arup & Partners Hong Kong Limited

Contract No. and Title:
Contract No. HY/2011/03
Hong Kong-Zhuhai-Macao Bridge
Hong Kong Link Road -
Section Between Scenic Hill and
Hong Kong Boundary Crossing Facilities

Drawing title
**PORTION OF SITE
(SHEET 3 OF 3)**

| | | | |
|----------------------------|------------|------------|-------------|
| Drawing no. 214487/2/T/123 | | Rev. A | |
| Drawn RY | Date 02/12 | Checked IL | Approved SK |
| Scale 1:2000 @A1 | Status | TENDER | |

COPYRIGHT RESERVED

路政署
HIGHWAYS DEPARTMENT
港珠澳大橋香港工程管理局
Hong Kong - Zhuhai - Macao Bridge
Hong Kong Project Management Office

Printed by : 13/2/2012
Filename : J:\214487\Record\HY_2011_03\Re-Tender (2012-02-17)\DGN\HY_2011_03-DRG-123-A-10.dgn