

Appendix C

Field Record and Photo Record

Odour Monitoring Report for Harbour Area Treatment Scheme Stage 2A (Operational Phase) (January 2022)



Location ID	Panellist	Weather	Time	T (°C)	RH (%)	WS (m/s)	WD (Degree)	Odour Intensity	Duration of Odour	Direction from Source	On-Site Observation				
											Odour Characteristics	Potential Odour Source			
OM_NP1	1	Cloudy	11:49	21.3	81.4	0.5	328	0	NA	NA	NA	NA			
	2							0							
	3							0							
OM_NP2	1		Cloudy	11:47	23.8	67.8	0.0	---	0	NA	NA	NA	NA		
	2								0						
	3								0						
OM_NP3	1			Cloudy	11:40	21.0	85.0	1.4	256	0	NA	NA	NA	NA	
	2									0					
	3									0					
North Point PTW Boundary	1				Cloudy	11:36	22.2	81.3	1.7	090	1	Continuous	Side wind	Vehicle Exhaust	From the road
	2										1				
	3										1				
OM_WC1	1	Cloudy				13:00	21.2	78.5	1.9	324	1	Intermittent	Side wind	Sewage	WC PTW
	2										1				
	3										1				

Odour Monitoring Report for Harbour Area Treatment Scheme Stage 2A (Operational Phase) (January 2022)



Location ID	Panellist	Weather	Time	T (°C)	RH (%)	WS (m/s)	WD (Degree)	Odour Intensity	Duration of Odour	Direction from Source	On-Site Observation	
											Odour Characteristics	Potential Odour Source
OM_WC2	1	Cloudy	12:56	23.1	74.0	0.5	110	0	NA	NA	NA	NA
	2							0				
	3							0				
Wan Chai East PTW Boundary	1	Cloudy	12:50	25.6	66.9	0.6	306	2	Intermittent	Side wind	Sewage	WC PTW
	2							2				
	3							2				
OM_C1	1	Cloudy	13:32	20.6	80.0	3.0	032	0	NA	NA	NA	NA
	2							0				
	3							0				
OM_C2	1	Cloudy	13:36	20.2	80.9	1.9	081	0	NA	NA	NA	NA
	2							0				
	3							0				
OM_C3	1	Cloudy	13:37	20.4	81.1	1.8	108	0	NA	NA	NA	NA
	2							0				
	3							0				

Odour Monitoring Report for Harbour Area Treatment Scheme Stage 2A (Operational Phase) (January 2022)



Location ID	Panellist	Weather	Time	T (°C)	RH (%)	WS (m/s)	WD (Degree)	Odour Intensity	Duration of Odour	Direction from Source	On-Site Observation	
											Odour Characteristics	Potential Odour Source
Central PTW Boundary	1	Cloudy	13:27	21.5	82.3	0.0	--	1	Continuous	NA	Sewer	Central PTW
	2							1				
	3							1				
OM_FM1	1	Cloudy	13:50	21.7	70.9	1.9	079	0	NA	NA	NA	NA
	2							0				
	3							0				
OM_SB1	1	Cloudy	14:22	22.2	68.8	1.6	239	1	Intermittent	Downwind	Sewage	SB PTW
	2							0	NA	NA	NA	NA
	3							1	Intermittent	Downwind	Sewage	SB PTW
OM_SB2	1	Cloudy	14:14	23.1	74.7	0.0	--	0	NA	NA	NA	NA
	2							0				
	3							0				
OM_SB3	1	Cloudy	14:18	22.8	73.9	0.7	250	0	NA	NA	NA	NA
	2							0				
	3							0				

Odour Monitoring Report for Harbour Area Treatment
Scheme Stage 2A (Operational Phase) (January 2022)



Location ID	Panellist	Weather	Time	T (°C)	RH (%)	WS (m/s)	WD (Degree)	Odour Intensity	Duration of Odour	Direction from Source	On-Site Observation	
											Odour Characteristics	Potential Odour Source
OM_SB4	1	Cloudy	14:11	23.4	67.3	1.4	066	0	NA	NA	NA	NA
	2							0				
	3							0				
Sandy Bay PTW Boundary	1	Cloudy	14:16	21.8	69.4	2.1	025	1	Intermittent	Downwind	Sewage	SB PTW (Near SB1)
	2							0	NA	NA	NA	NA
	3							1	Intermittent	Downwind	Sewage	SB PTW (Near SB1)
OM_CB1	1	Cloudy	14:39	22.3	74.2	0.6	013	1	Intermittent	Side wind	Cooking	Le Meridien Hotel
	2							1				
	3							1				
OM_CB2	1	Cloudy	14:41	21.6	75.3	1.1	175	1	Intermittent	Upwind	Cooking	Le Meridien Hotel
	2							0	NA	NA	NA	NA
	3							1	Intermittent	Upwind	Cooking	Le Meridien Hotel
Cyberport PTW Boundary	1	Cloudy	14:33	22.1	75.2	1.2	081	0	NA	NA	NA	NA
	2							0				
	3							0				

Odour Monitoring Report for Harbour Area Treatment Scheme Stage 2A (Operational Phase) (January 2022)



Location ID	Panellist	Weather	Time	T (°C)	RH (%)	WS (m/s)	WD (Degree)	Odour Intensity	Duration of Odour	Direction from Source	On-Site Observation	
											Odour Characteristics	Potential Odour Source
OM_WF1	1	Cloudy	15:01	21.1	79.0	0.4	215	1	Intermittent	Side wind	Cooking	Wah Ming House
	2							1				
	3							1				
Wah Fu PTW Boundary	1	Cloudy	15:06	22.2	76.1	0.7	191	1	Intermittent	Downwind	Sewage	WF PTW
	2							1				
	3							1				
OM_AB1	1	Cloudy	15:25	21.3	68.8	1.8	097	0	NA	NA	NA	NA
	2							0				
	3							0				
Aberdeen PTW Boundary	1	Cloudy	15:23	23.9	70.0	0.3	356	1	Intermittent	Side wind	Grassy & Sea water	Nearby vegetation and the seashore
	2							1				
	3							1				
OM_ALC1	1	Cloudy	15:43	24.6	61.9	0.8	172	0	NA	NA	NA	NA
	2							0				
	3							0				

Odour Monitoring Report for Harbour Area Treatment Scheme Stage 2A (Operational Phase) (January 2022)



Location ID	Panellist	Weather	Time	T (°C)	RH (%)	WS (m/s)	WD (Degree)	Odour Intensity	Duration of Odour	Direction from Source	On-Site Observation	
											Odour Characteristics	Potential Odour Source
Ap Lei Chau PTW Boundary	1	Cloudy	15:48	22.5	78.1	0.0	--	1	Intermittent	Side wind	Sewage	ALC PTW
	2							1				
	3							1				
OM_SCI1	1	Cloudy	10:17	20.8	92.2	0.4	237	0	NA	NA	NA	NA
	2							0				
	3							0				
OM_SCI2	1	Cloudy	10:40	19.7	86.6	2.7	344	0	NA	NA	NA	NA
	2							0				
	3							0				
OM_SCI3	1	Cloudy	10:50	20.5	84.7	1.9	159	1	Intermittent	Downwind	Sea water	From the seashore
	2							0	NA	NA	NA	NA
	3							1	Intermittent	Downwind	Sea water	From the seashore
OM_SCI4	1	Cloudy	9:34	20.1	87.7	1.0	002	1	Continuous	Downwind	Sea water	From the seashore
	2							1				
	3							1				

Odour Monitoring Report for Harbour Area Treatment
Scheme Stage 2A (Operational Phase) (January 2022)



Location ID	Panellist	Weather	Time	T (°C)	RH (%)	WS (m/s)	WD (Degree)	Odour Intensity	Duration of Odour	Direction from Source	On-Site Observation	
											Odour Characteristics	Potential Odour Source
OM_SCI5	1	Cloudy	10:26	20.4	93.3	0.0	--	0	NA	NA	NA	NA
	2							0				
	3							0				
SCISTW Boundary Location A	1	Cloudy	10:01	19.8	96.7	0.7	051	0	NA	NA	NA	NA
	2							0				
	3							0				
SCISTW Boundary Location A1	1	Cloudy	10:33	21.1	92.3	0.3	290	1	Continuous	Upwind	Sewage	SCISTW
	2							1				
	3							1				
SCISTW Boundary Location B	1	Cloudy	9:57	20.7	94.9	0.0	--	2	Continuous	NA	Garbage	Refuse Collection Vehicle/ Roadside
	2							2				
	3							1				
SCISTW Boundary Location C	1	Cloudy	9:55	20.7	87.4	0.6	311	2	Continuous	Side wind	Garbage	Refuse Transfer Station
	2							2				
	3							1				







Odour Monitoring Report for Harbour Area Treatment Scheme Stage 2A (Operational Phase) (January 2022)

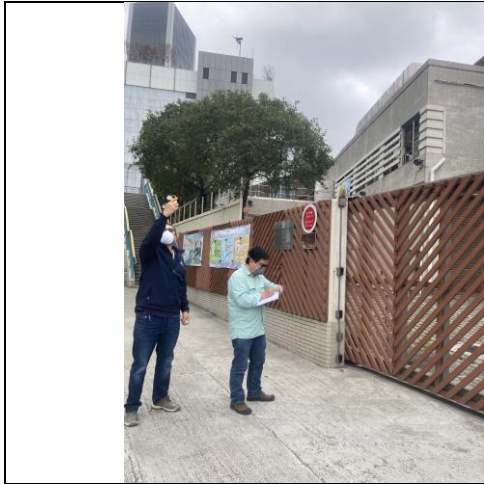


Location ID	Panellist	Weather	Time	T (°C)	RH (%)	WS (m/s)	WD (Degree)	Odour Intensity	Duration of Odour	Direction from Source	On-Site Observation	
											Odour Characteristics	Potential Odour Source
SCISTW Boundary Location D	1	Cloudy	10:30	20.6	91.0	0.0	--	0	NA	NA	NA	NA
	2							0				
	3							0				

Remark:

- T: Air Temperature;
- RH: Relative Humidity;
- WS: Wind Speed;
- WD: Wind Direction.

	
<p>OM_NP1</p>	<p>OM_NP2</p>
	
<p>OM_NP3</p>	<p>North Point PTW Boundary</p>
	
<p>OM_WC1</p>	<p>OM_WC2</p>



Wan Chai East PTW Boundary



OM_C1



OM_C2



OM_C3



Central PTW Boundary



OM_FM1



OM_SB1



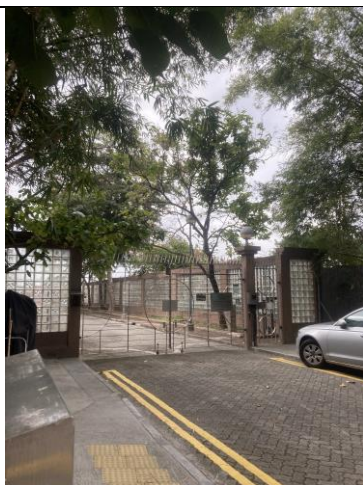
OM_SB2



OM_SB3



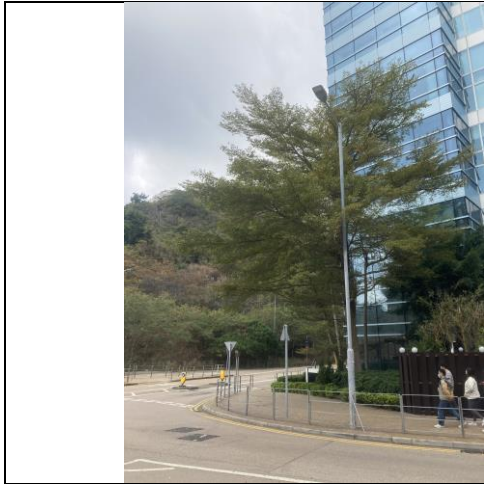
OM_SB4



Sandy Bay PTW Boundary



OM_CB1



OM_CB2



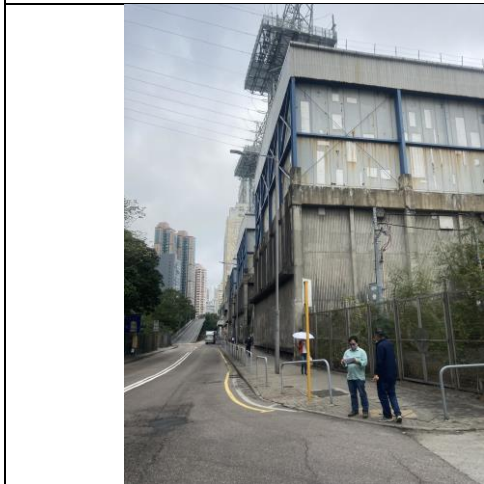
Cyberport PTW Boundary



OM_WF1



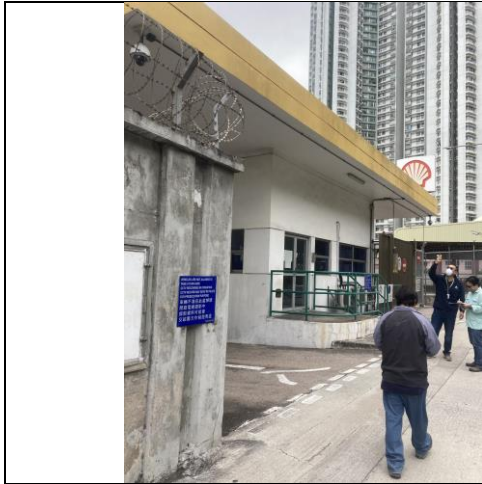
Wah Fu PTW Boundary



OM_AB1



Aberdeen PTW Boundary



OM_ALC1



Ap Lei Chau PTW Boundary



OM_SCI1



OM_SCI2



OM_SCI3



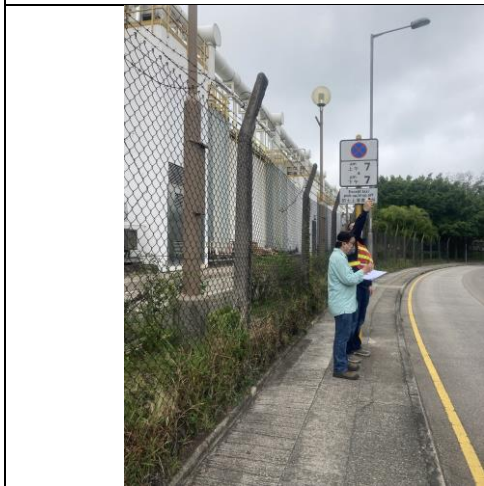
OM_SCI4



OM_SC15



SCISTW Boundary Location A



SCISTW Boundary Location A1



SCISTW Boundary Location B



SCISTW Boundary Location C



SCISTW Boundary Location D