

Your Ref :  
Our Ref : (CV/2013/08)/M45/200/(H00323)

18 September 2015

**By Hand**

Environmental Impact Assessment Ordinance Register Office  
Environmental Protection Department  
27/F, Southorn Centre,  
130 Hennessy Road,  
Wanchai, Hong Kong

Attn.: Mr. Charles Pang

Dear Sirs,

**Contract No. CV/2013/08**  
**Liantang / Heung Yuen Wai Boundary Control Point**  
**Site Formation and Infrastructure Works – Contract 6**

**Environmental Permit No. EP-404/2011/C**  
**Condition 2.7 – Submission of Project Layout Plan**

With reference to Condition 2.7 of the Environmental Permit (EP) No. EP-404/2011/C for the Project titled "Liantang / Heung Yuen Wai Boundary Control Point and Associated Works", and on behalf of the Permit Holder, Civil Engineering and Development Department (CEDD), I would like to submit 3 sets of the Project Layout Plan and respective works programme with explanatory notes which had been certified by the ET Leader and verified by the IEC for the captioned Contract for your approval.

Should you have any queries, please contact the undersigned or our Mr. Perry Yam at 2171 3350.

Yours faithfully,

  
Simon Leung  
Senior Resident Engineer  
AECOM Asia Co. Ltd.

Encl.

c.c. CEDD/BCP - Attn: Mr. Chris Wong / Mr. Steve Lo  
AECOM - Attn: Mr. Francis Leong / Mr. Pat Lam  
SMEC(IEC) - Attn: Mr. Antony Wong  
AUES(ET) - Attn: Mr. T W Tam  
CCKJV - Attn: Mr. Vincent Chan - (w/o encl.)

CTW/SL/GW/PX/ysm



Unit A-C, 27/F Ford Glory Plaza  
37-39 Wing Hong Street  
Cheung Sha Wan, Kowloon, Hong Kong  
T +852 3995 8100 F +852 3995 8101 E hongkong@smec.com  
[www.smec.com](http://www.smec.com)

17 September 2015

Our ref: 7076192/L19202/Ry/AB/AW/FL/rw

AECOM  
8/F, Grand Central Plaza, Tower 2  
138 Shatin Rural Committee Road  
Shatin, N.T.

**By Email & Post**

**Attention: Mr Simon LEUNG**

Dear Sirs

**Agreement No. CE 45/2008 (CE)  
Liantang/Heung Yuen Wai Boundary Control Point and Associated Works  
Independent Environmental Checker – Investigation  
Project Layout Plan of Contract 6 (CV/2013/08)**

With reference to the Project Layout Plan provided to us on 16 September 2015, please be noted that we have no adverse comments on the captioned submission. We herewith verify the Project Layout Plans of Contract 6 (CV/2013/08) of the captioned Project in accordance with Condition 2.7 of Environmental Permit No. EP-404/2011/C.

Thank you for your attention and please do not hesitate to contact the undersigned on tel. 3995 8120 or by email to [antony.wong@smec.com](mailto:antony.wong@smec.com); or our Mr Francis LEE on tel. 3995 8144 or by email to [francis.lee@smec.com](mailto:francis.lee@smec.com).

Yours faithfully  
for and on behalf of  
SMEC Asia Limited

**Antony WONG**  
Independent Environmental Checker

cc	CEDD/BCP	-	Mr Karl KL KWAN	by fax: 3547 1659
	AECOM	-	Mr Pat LAM/ Mr Perry YAM	by email
	AUES	-	Mr TW TAM	by email

Our Ref: TCS00670/13/300/L0501

**AECOM**  
**8/f Grand Central Plaza, Tower 2**  
**138 Shatin Rural Committee Road**  
**Shatin, Hong Kong**

**Attn: Mr. Mr. Simon Leung**  
**Engineer's Representative**

**17 September 2015**  
**By E-mail and By Post and by Fax**  
**Fax: 2171 3498**

Dear Sir,

**Re: Contract CV/2013/08 Liantang/ Heung Yuen Wai Boundary Control Point Site  
Formation and Infrastructure Works – Contract 6  
Certification of Project Layout Plan in accordance with EP-404/2011/C Condition  
2.7**

---

With reference to the captioned *Project Layout Plan* submitted to us via email on 14 September 2015, please note that we have no adverse comment on this submission. We herewith certify the captioned *Project Layout Plan* in accordance with *Condition 2.7* of Environmental Permit No. EP-404/2011/C.

Should you have any question or require further information, please feel free to contact the undersigned at Tel: 2959-6059 or Fax: 2959-6079 or E-mail: [twtam@fordbusiness.com](mailto:twtam@fordbusiness.com).

Yours sincerely,  
For and on Behalf of  
**Action-United Environmental Services & Consulting**



T. W. Tam  
Environmental Team Leader  
TW/bt/jk

cc SMEC (IEC)                      Attn: Mr. Antony Wong      By e-mail

**Liantang / Heung Yuen Wai Boundary Control Point  
Site Formation and Infrastructure Works –  
Contract 6**

**Environmental Permit (EP No.: EP-404/2011/C)**

**Project Layout Plan**

**Liantang / Heung Yuen Wai Boundary Control Point Site Formation and Infrastructure Works - Contract 6 (Contract No.: CV/2013/08)**

**Explanatory Statement for Works Schedule**

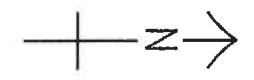
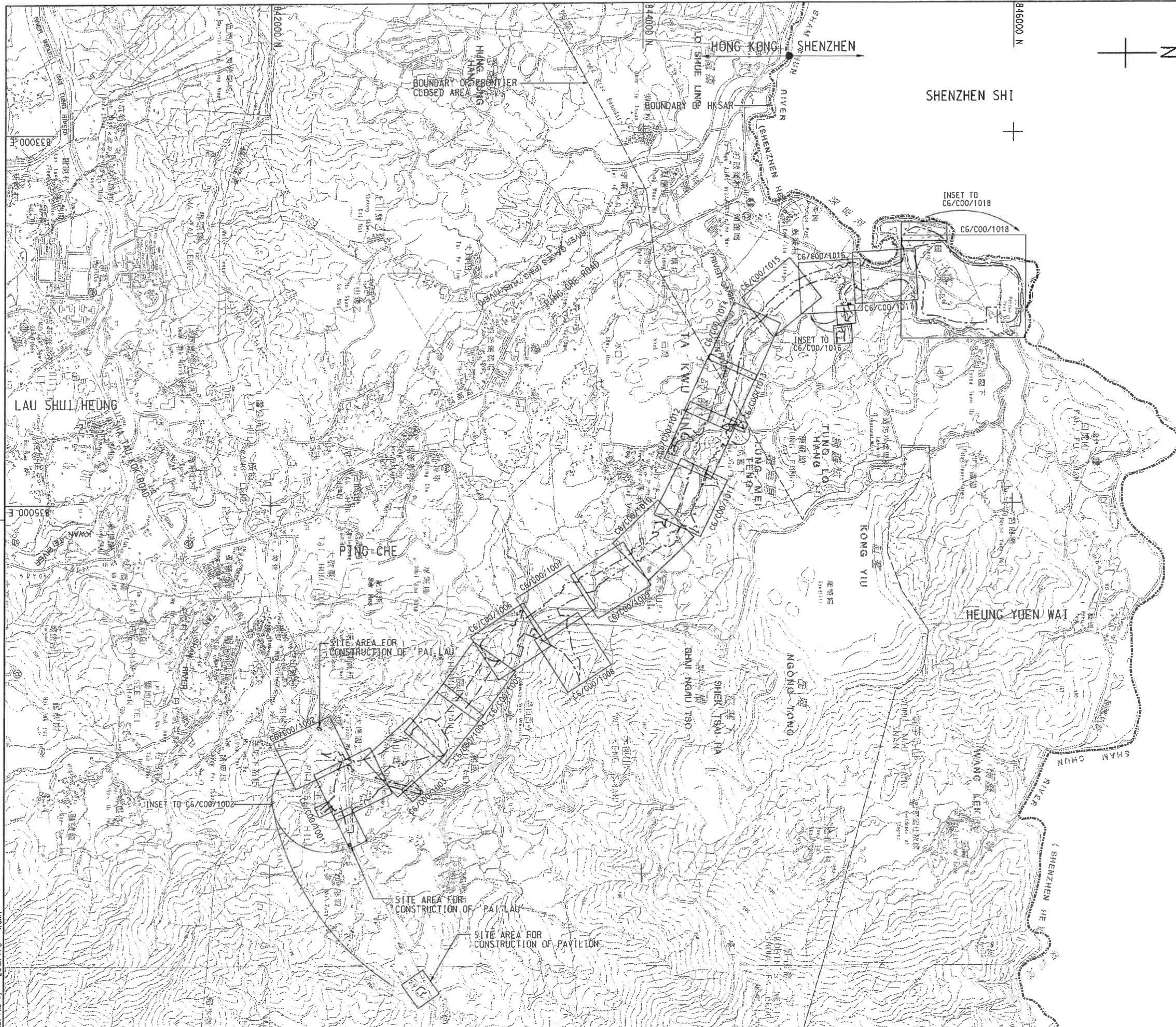
The Works to be executed under this Contract No. CV/2013/08 include, but not exclusively, the following items:

- (i) construction of an approximately 4.6km long dual two-lane Connecting Road (with about 0.6km of at-grade roads, 3.3km of viaducts and 0.7km of tunnel) connecting the Border Control Point (BCP) with the proposed Sha Tau Kok Interchange and the associated tunnel ventilation buildings;
- (ii) provision of a 1.8 kilometres (km) perimeter road at the proposed BCP;
- (iii) provision of sewage collection, treatment and disposal facilities for the BCP and the resite of Chuk Yuen Village;
- (iv) construction of a pedestrian subway linking the BCP to Lin Ma Hang Road;
- (v) reprovisioning of the affected Wo Keng Shan Road garden and Wo Keng Shan public toilet;
- (vi) construction of associated footpath, slopes, retaining structures, drainage, sewerage, waterworks, landscaping works and other ancillary works;
- (vii) associated environmental mitigation measures, and Environmental Monitoring and Audit (EM&A) programme for the works; and
- (viii) other works which are shown on the Drawings or specified in the Specification or which may be ordered in accordance with the Conditions of Contract.

## Liantang / Heung Yuen Wai Boundary Control Point Site Formation and Infrastructure Works – Contract 6

### Summary of Programme

Item	Activity	Start	Finish
1	Preliminaries	24 Jun 2015	20 Nov 2015
2	Submission and Approval	24 Jun 2015	12 Apr 2016
3	Off-site Segment Fabrication	17 Aug 2015	28 Jun 2017
4	Sha Tau Kok Interchange	24 Jun 2015	22 Oct 2018
5	Bridge A (Ch6850 to Ch7295)	23 Jul 2015	20 Dec 2017
6	South Portal Works	23 Jul 2015	20 Dec 2017
7	North Portal Works	24 Jun 2015	26 Dec 2017
8	Cheung Shan Tunnel	07 Jun 2016	26 Dec 2017
9	Bridge B (Ch8250 to Ch8505)	24 Jun 2015	07 Sep 2017
10	At-Grade Road	24 Jun 2015	18 Dec 2017
11	Bridge C (Ch8700 to Ch9005)	24 Jun 2015	26 Dec 2017
12	At-Grade Road (Ch9005 to Ch9260)	23 Jul 2015	30 Nov 2017
13	Bridge D (Ch9269 to Ch11369)	23 Jul 2015	26 Dec 2017
14	Ping Yeung Interchange (PYI)	08 Oct 2015	11 Oct 2018
15	Border Control Point (BCP)	24 Jul 2015	06 Oct 2018
16	Works Subject to Excision	24 Jan 2016	20 Oct 2017
17	Landscaping and Establishment Works	23 Jul 2015	27 Apr 2022



**LEGEND:**  
 - - - - - SITE BOUNDARY  
 - - - - - UNDERGROUND SITE BOUNDARY

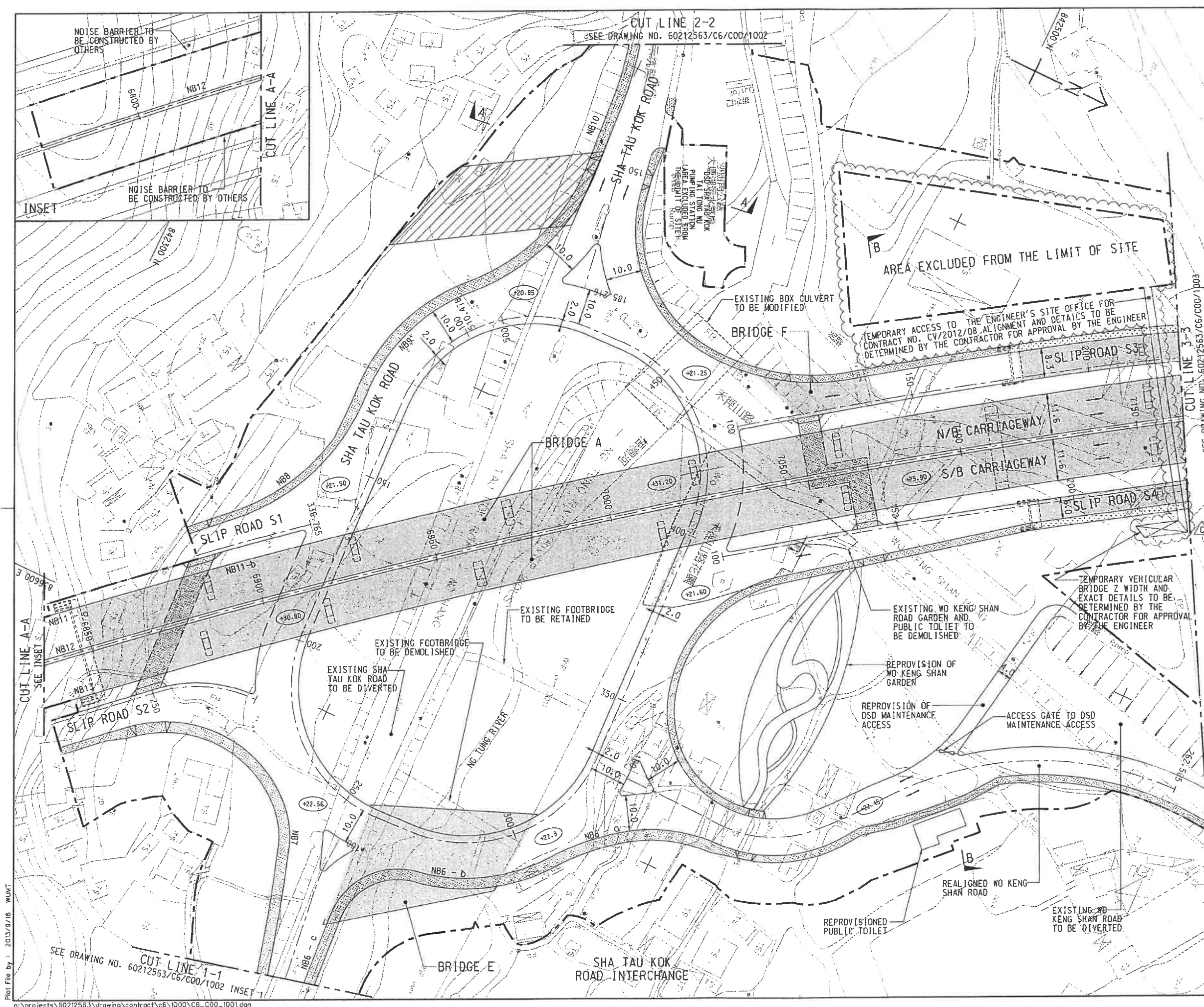
TENDER DRAWING		2/	MAY-13
NO.	DESCRIPTION	DATE	BY

**CEDD** 土木工程拓展署  
 Civil Engineering and  
 Development Department  
 LIANGTANG/HEUNG YUEN WAI BOUNDARY CONTROL POINT  
 SITE FORMATION AND INFRASTRUCTURE WORKS -  
 CONTRACT 6  
**GENERAL LAYOUT  
 KEY PLAN**

**AECOM**

DRGNO. 60212563/C6/C00/1000 圖紙編號	
DESIGNED BY WLC	CONTRACT NO. C/2013/03
SEAL NO. ZJ	DATE APPROVED JLY
SCALE 比例 A1 1 : 10000	© COPYRIGHT RESERVED 版權所有

Plot File by : 2013/7/3 WUMT



**NOTE:**  
1. ALL LEVELS SHOWN ARE INDICATIVE ONLY.

**LEGEND:**

- SITE BOUNDARY
- - - UNDERGROUND SITE BOUNDARY
- B — SECONDARY BOUNDARY FENCE (BY OTHERS)
- B1 - SOUTH EAST BOUNDARY FENCE (BY OTHERS)
- ✕ BT ✕ TEMPORARY BOUNDARY FENCE TO BE DEMOLISHED
- BT TEMPORARY BOUNDARY FENCE. THE HEIGHT OF TEMPORARY FENCE WALL SHALL NOT BE LESS THAN 3.5M. THE EXACT ARRANGEMENT SHALL BE AGREED BY HKPF.
- BT TEMPORARY BOUNDARY FENCE (BY OTHERS)
- R1 - RAILING
- (+19.70) ROAD LEVEL / GROUND LEVEL
- TTTT OPEN CUT SLOPE
- Y Y Y COMPACTED FILL SLOPE
- Y Y Y ROCK CUT SLOPE
- Y Y Y ROCK FILL SLOPE
- △ CANTILEVER RETAINING WALL
- △ L-SHAPE RC RETAINING WALL
- △ RETAINING WALL (BY OTHERS)
- △ L-SHAPE RETAINING WALL WITH SECONDARY BOUNDARY FENCE ON TOP (BY OTHERS)
- △ RETAINING WALL (CONSTRUCTED BY OTHERS) WITH RETAINING WALL FINISHES TO BE CONSTRUCTED BY THE CONTRACTOR
- BORED PILE WALL
- NB2 VERTICAL NOISE BARRIER IN SPACE TYPE
- ROADSIDE AMENITY PLANTERS
- VIADUCT SECTION
- TUNNEL SECTION TO BE CONSTRUCTED BY DRILL AND BLAST METHOD
- TUNNEL CROSS PASSAGE
- FOOTPATH
- MAINTENANCE ACCESS
- WETLAND
- 10M WIDE TEMPORARY CONSTRUCTION ACCESS BY THE CONTRACTOR OF CV/2012/08. REFER PS CLAUSES 1.105 AND 1.107 FOR DETAILS.
- STREAM CROSSING UNDERNEATH VIADUCT REFER DRAWING NO. 60212563/C6/C00/1275 FOR DETAILS
- TUNNEL APPROACH STRUCTURE

C	TENDER ADDENDUM NO. 3	WLC	KYN	SEP-13
B	TENDER ADDENDUM NO. 2	WLC	KYN	SEP-13
A	TENDER ADDENDUM NO. 1	WLC	KYN	JUL-13
-	TENDER DRAWING	WLC	KYN	MAY-13

NO.	REV.	DESCRIPTION	DATE
01	01	ISSUED FOR TENDER	08/07/13

土木工程拓展署  
Civil Engineering and Development Department

LIANTANG/HEUNG YUEN YAT BOUNDARY CONTROL POINT SITE FORMATION AND INFRASTRUCTURE WORKS - CONTRACT 6

**GENERAL LAYOUT (SHA TAU KOK ROAD INTERCHANGE)**  
SHEET 1 OF 18

**AECOM**

DRG. NO. 60212563/C6/C00/1001C  
圖號 60212563/C6/C00/1001C

DESIGNED BY DR	MLC	CONTRACT NO. CV/2013/08	P. BY APPROVED JULY
DRAWN BY JM	ZJ	SCALE 1:500	DATE 08/07/13
METRES		COPYRIGHT RESERVED 版權所有	

Plot File By : 2013/9/18 WUMT

p:\projects\60212563\drawing\contract\c6\1000\C6\_C00\_1001.dgn





NOTE:  
 1. FOR NOTE AND LEGEND REFER TO DRAWING NO. 60212563/C6/C00/1001.

NO. 圖號	TENDER DRAWING	DATE 日期	MAY-13
DESCRIPTION 內容		DESIGNED BY 設計人	WLC
		CHECKED BY 校核人	WLN
		DATE 日期	

CEDD 土木工程拓展署  
 Civil Engineering and Development Department  
 LIANTANG/HEUNG YUEN WAI BOUNDARY CONTROL POINT  
 SITE FORMATION AND INFRASTRUCTURE WORKS - CONTRACT 6

GENERAL LAYOUT

SHEET 2 OF 18

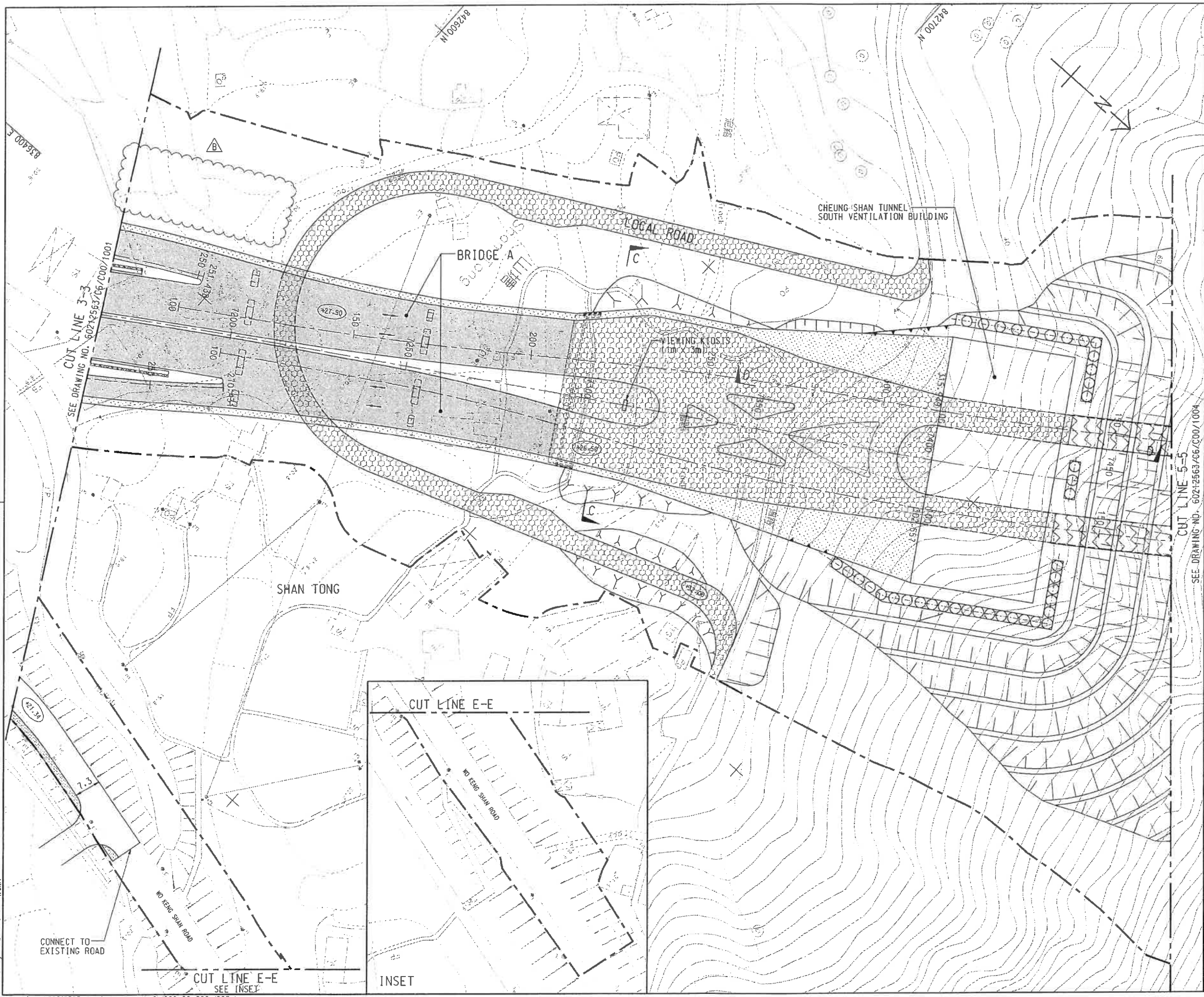


DRG. NO. 圖紙編號 60212563/C6/C00/1002

DESIGNED BY 設計人	WLC	CHECKED BY 校核人	CV/2013/08	P. BY 校核人	JULY
DRAWN BY 繪圖	ZJ	SHEET 圖號			
SCALE 比例	A1 1 : 500				
UNIT 單位	METRES				

© COPYRIGHT RESERVED 版權所有

Plot File by : 2013/5/31 WJMT



**NOTE:**  
 1. FOR NOTE AND LEGEND REFER TO DRAWING NO. 60212563/C6/C00/1001.

B	TENDER ADDENDUM NO. 2	MLC KYN	SEP-13
A	TENDER ADDENDUM NO. 1	MLC KYN	JUL-13
-	TENDER DRAWING	MLC KYN	MAY-13

CEDD 土木工程拓展署  
 Civil Engineering and Development Department  
 LIANTANG/HEUNG YUEN WAI BOUNDARY CONTROL POINT  
 SITE FORMATION AND INFRASTRUCTURE WORKS - CONTRACT 6

**GENERAL LAYOUT**

SHEET 3 OF 18

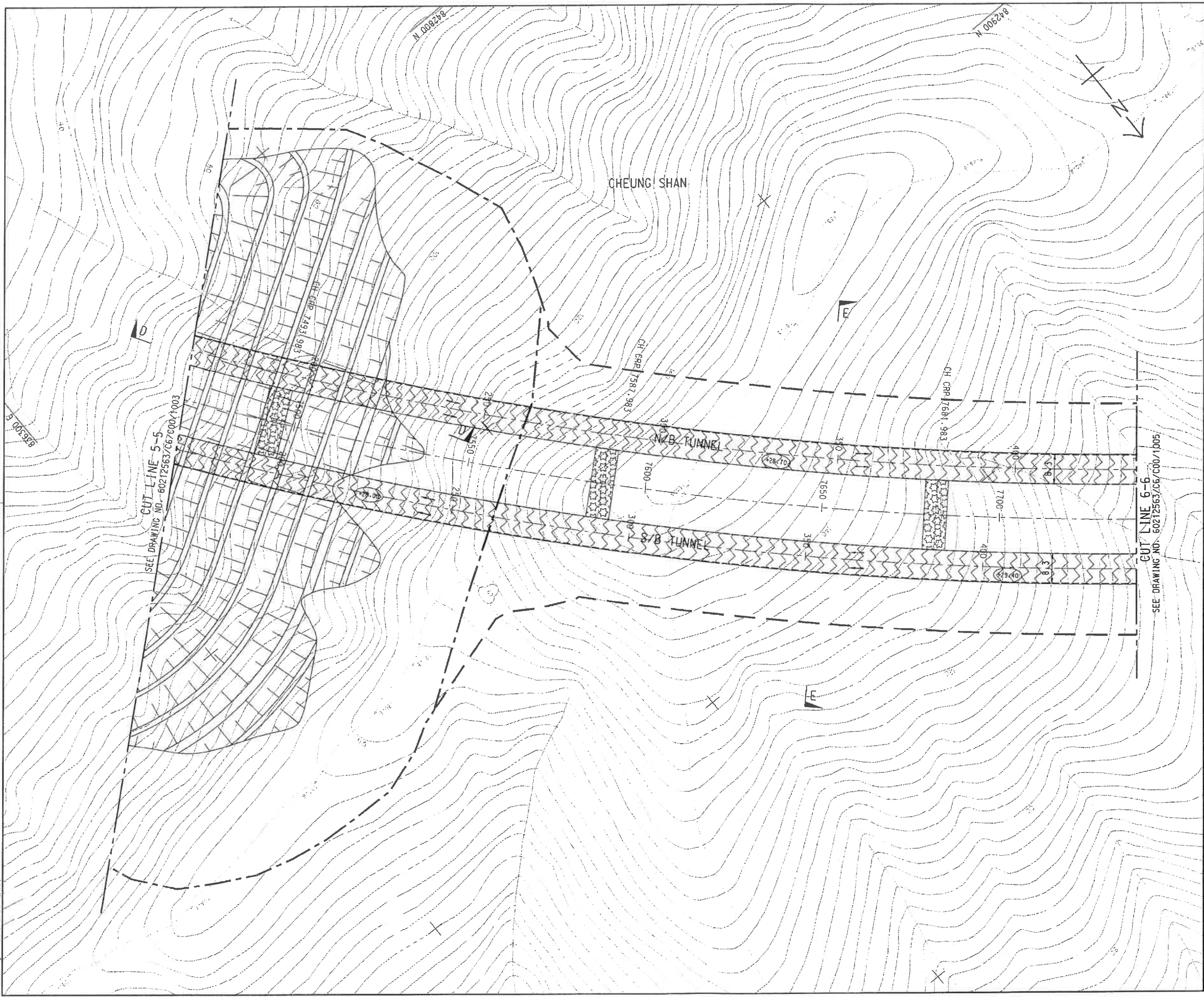


DRG.NO. 圖紙編號 60212563/C6/C00/1003B

DESIGNED BY 設計: MLC	CHECKED BY 校核: CV/2013/OB	DATE 日期: JUL
DRAWN BY 繪圖: ZJ	STATUS 狀態:	


SCALE 比例: A1 1 : 500  
 DIMENSIONS ARE IN METRES 尺寸單位: 公尺  
 © COPYRIGHT RESERVED 版權所有

Plot File by : 2013/9/6 WJMT



**NOTE:**  
 1. FOR NOTE AND LEGEND REFER TO DRAWING NO. 60212563/C6/C00/1001.

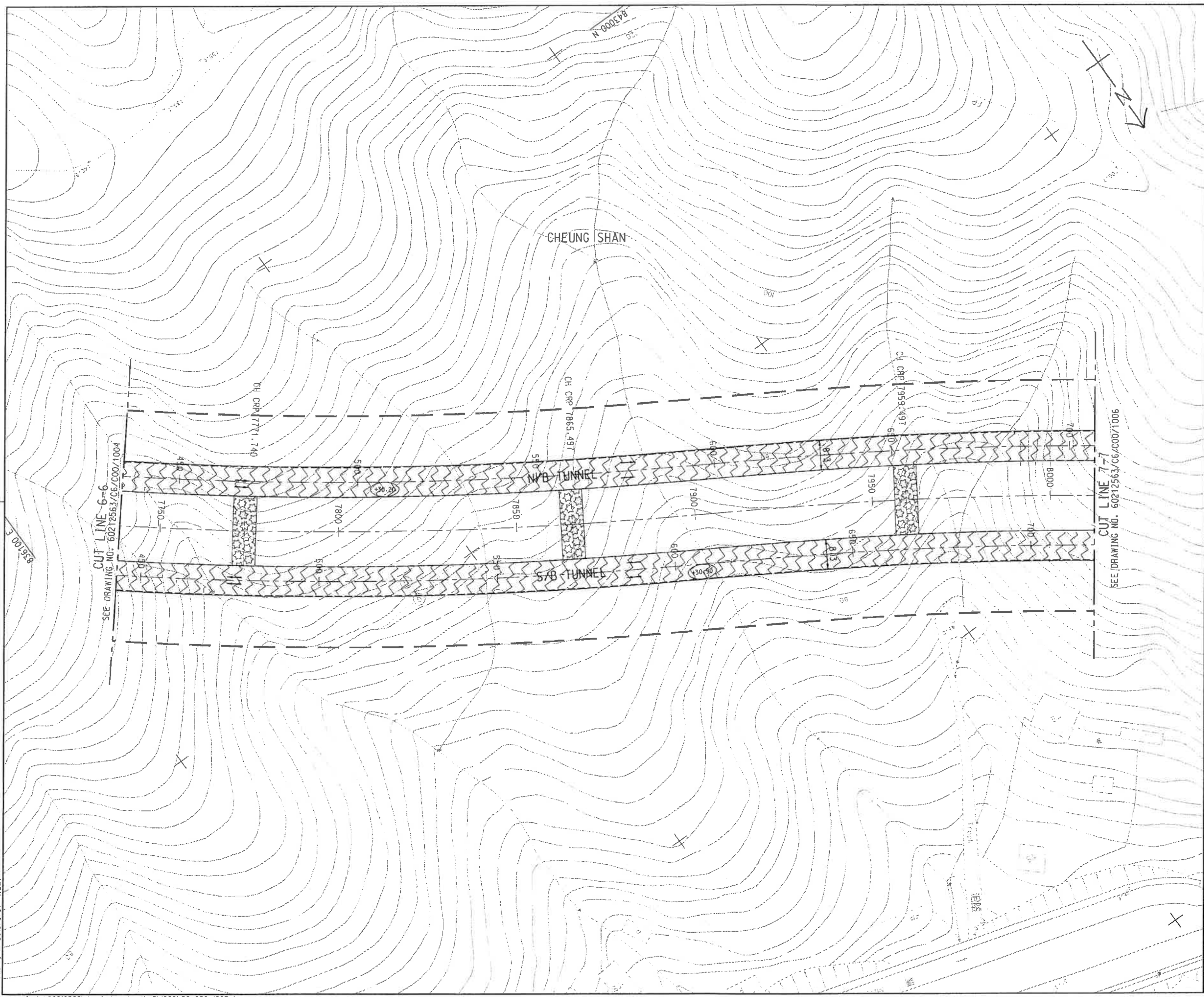
TENDER DRAWING	MLC KTN MAY-13
REV. NO.	DATE


 土木工程拓展署  
 Civil Engineering and Development Department  
 LIANTANG/HEUNG YUEN WAI BOUNDARY CONTROL POINT SITE FORMATION AND INFRASTRUCTURE WORKS - CONTRACT 6  
**GENERAL LAYOUT (CHEUNG SHAN TUNNEL)**  
 SHEET 4 OF 18

**AECOM**

DRG. NO. 圖紙編號	60212563/C6/C00/1004		
DESIGNED BY 設計	CONTRACT NO. 合約編號	P. DIR. APPROVED 負責人	
MLC	CV/2013/08	JLY	
DRAWN BY 繪圖	STATUS 狀態	SCALE 比例	
ZJ		A1 1 : 500	
DIMENSIONS ARE IN METRES		COPYRIGHT RESERVED 版權所有	

Plot File by : 2013/5/31 WJMT



NOTE:  
 1. FOR NOTE AND LEGEND REFER TO DRAWING NO. 60212563/C6/C00/1001.

Plot File by : 2013/5/31 WJMT

p:\projects\60212563\drawing\contract\c6\1000\C6\_C00\_1005.dgn

NO.	DESCRIPTION	DATE
1	TENDER DRAWING	MAY-13

**CEDD** 土木工程拓展署  
 Civil Engineering and  
 Development Department

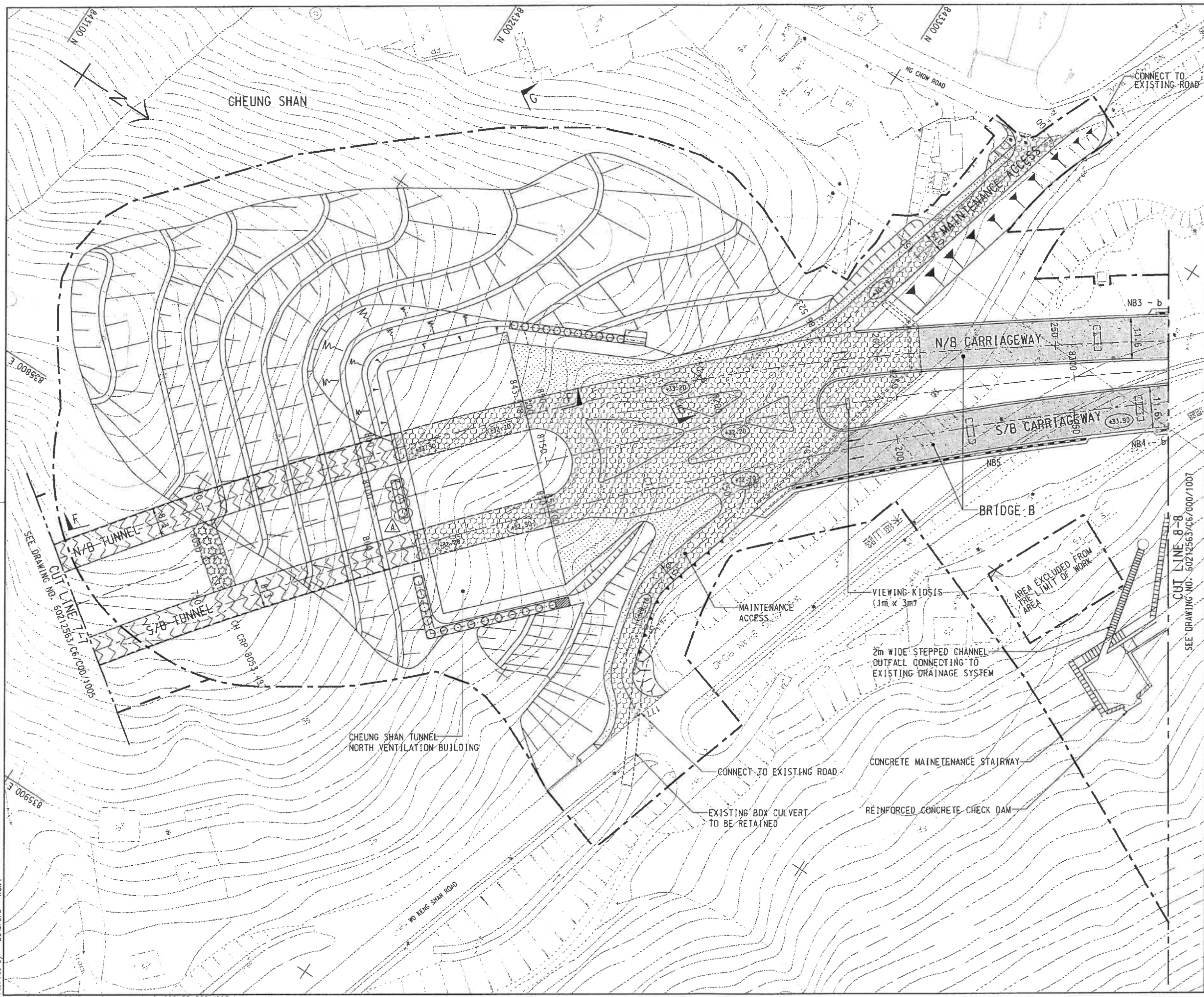
LIANTANG/HEUNG YUEN WAI BOUNDARY CONTROL POINT  
 SITE FORMATION AND INFRASTRUCTURE WORKS -  
 CONTRACT 6

**GENERAL LAYOUT  
 (CHEUNG SHAN TUNNEL)**

SHEET 5 OF 18



DRG. NO. 圖紙編號	60212563/C6/C00/1005	
DESIGNED BY 設計	CONTRACT NO. 合約編號	P. BY / APPROVED 校核 / 批准
NLC	CV/2013/08	JLY
DRAWN BY 繪圖	STATUS 狀態	
ZJ		
SCALE 比例	A1 : 1 : 500	
DIMENSIONS ARE IN 尺寸單位	METRES	
COPYRIGHT RESERVED 版權所有		



**NOTE:**  
 1. FOR NOTE AND LEGEND REFER TO DRAWING NO. 60212563/C6/C00/1001.

A	TENDER ADDENDUM NO. 2	WLC KYN	SEP-13
-	TENDER DRAWING	WLC KYN	MAY-13

CEDD 土木工程拓展署  
 Civil Engineering and  
 Development Department  
 LIANTANG/HEUNG YUEN HAI BOUNDARY CONTROL POINT  
 SITE FORMATION AND INFRASTRUCTURE WORKS -  
 CONTRACT 6

**GENERAL LAYOUT**

SHEET 6 OF 18

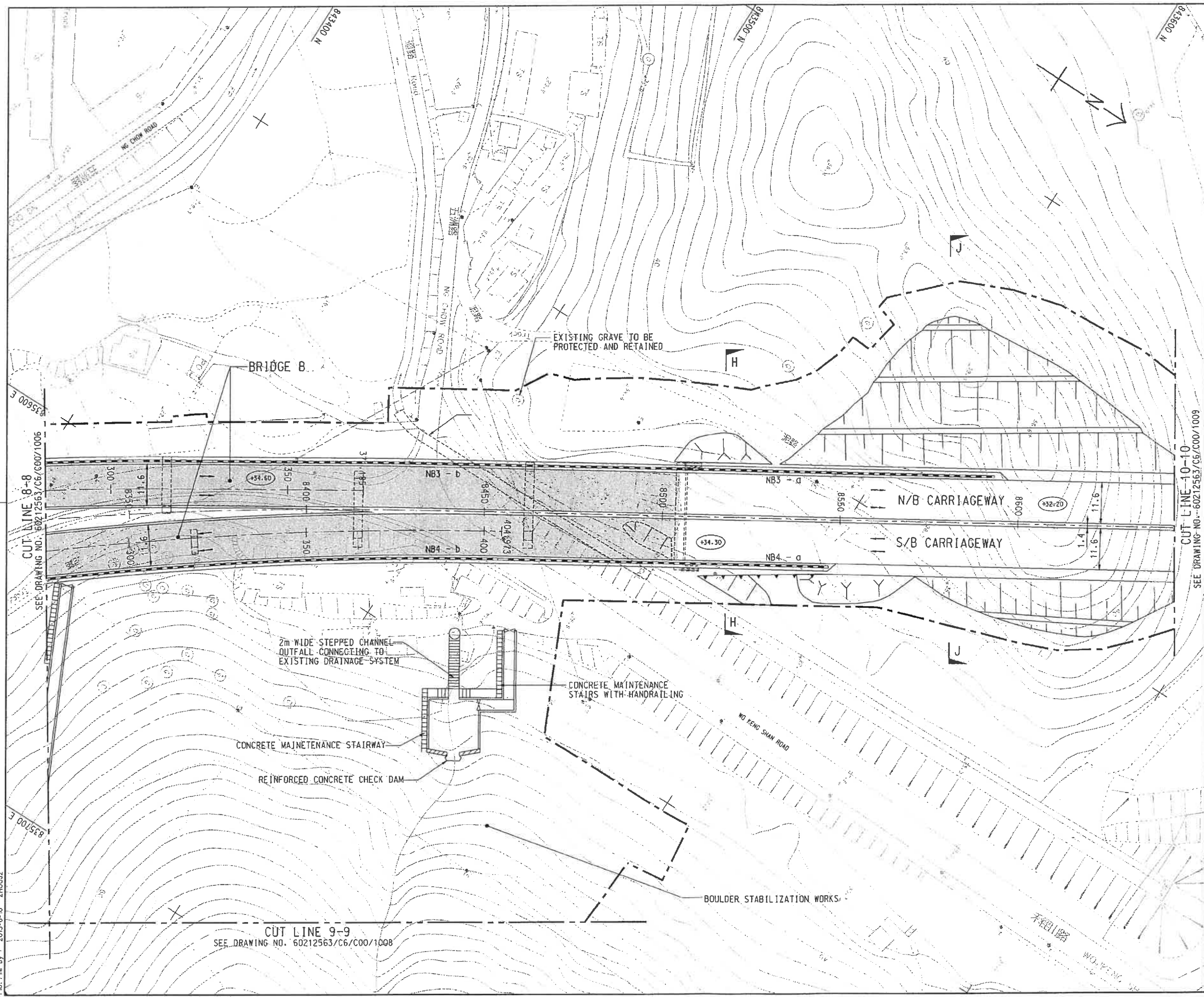


DRGNO. 60212563/C6/C00/1006A  
 圖紙編號

DESIGNED BY WLC	CONTRACT NO. CY/2013/08	DATE JULY
DRAWN BY ZJ	SCALE A1 1 : 500	UNIT METRES

© COPYRIGHT RESERVED  
 版權所有

Plot File by : 2013/9/6 WUMT



NOTE:  
 1. FOR NOTE AND LEGEND REFER TO DRAWING NO. 60212563/C6/C00/1001.

CUT LINE 8-8  
 SEE DRAWING NO. 60212563/C6/C00/1006

CUT LINE 10-10  
 SEE DRAWING NO. 60212563/C6/C00/1009

CUT LINE 9-9  
 SEE DRAWING NO. 60212563/C6/C00/1008

TENDER DRAWING	DATE: 21 MAY-13
NO. 01	DESCRIPTION: 土水工程拓展署
REV. 01	DATE: 21 MAY-13

**CEDD** 土木工程拓展署  
 Civil Engineering and Development Department  
 LIANTANG/HEUNG YUEN NAI BOUNDARY CONTROL POINT  
 SITE FORMATION AND INFRASTRUCTURE WORKS - CONTRACT 6

GENERAL LAYOUT

SHEET 7 OF 18

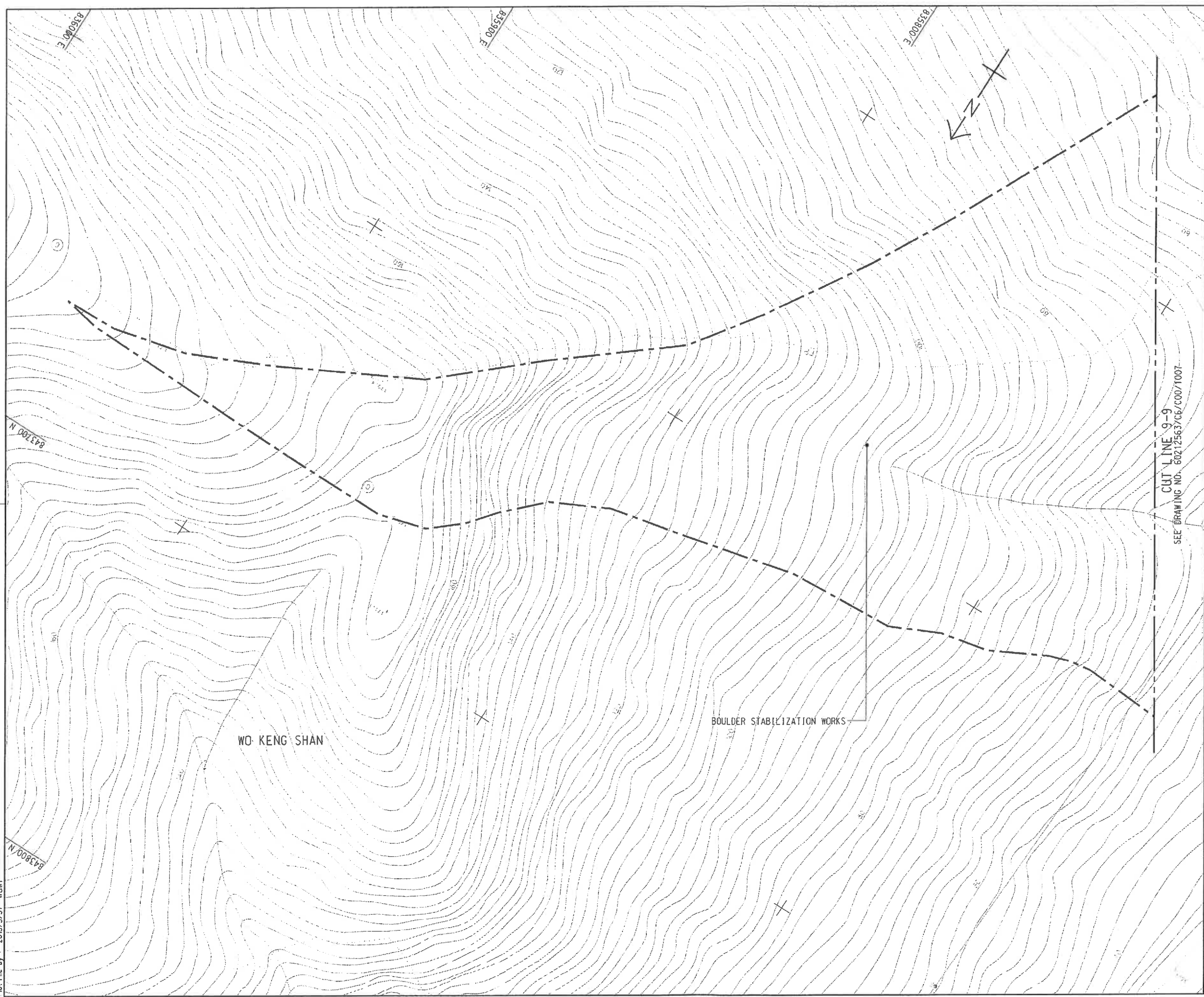


DRGNO. 60212563/C6/C00/1007

DESIGNED BY: WLC	CONTRACT NO.: CV/2013/08	DATE: JULY
DRAWN BY: ZJ	STATUS: 01	
SCALE: 1:500	DIMENSIONS IN METRES	

© COPYRIGHT RESERVED  
 版權所有

Plot File by : 2013-6-10 ZHOU2



NOTE:  
 1. FOR NOTE AND LEGEND REFER TO DRAWING NO. 60212563/C6/C00/1001.

CUT LINE 9-9  
 SEE DRAWING NO. 60212563/C6/C00/1007

WO KENG SHAN

BOULDER STABILIZATION WORKS

NO.	DESCRIPTION	DATE
1	TENDER DRAWING	MAY-13

**CEDD** 土木工程拓展署  
 Civil Engineering and  
 Development Department  
 LIANTANG/HEUNG YUEN WAI BOUNDARY CONTROL POINT  
 SITE FORMATION AND INFRASTRUCTURE WORKS -  
 CONTRACT 6

GENERAL LAYOUT

SHEET 8 OF 18

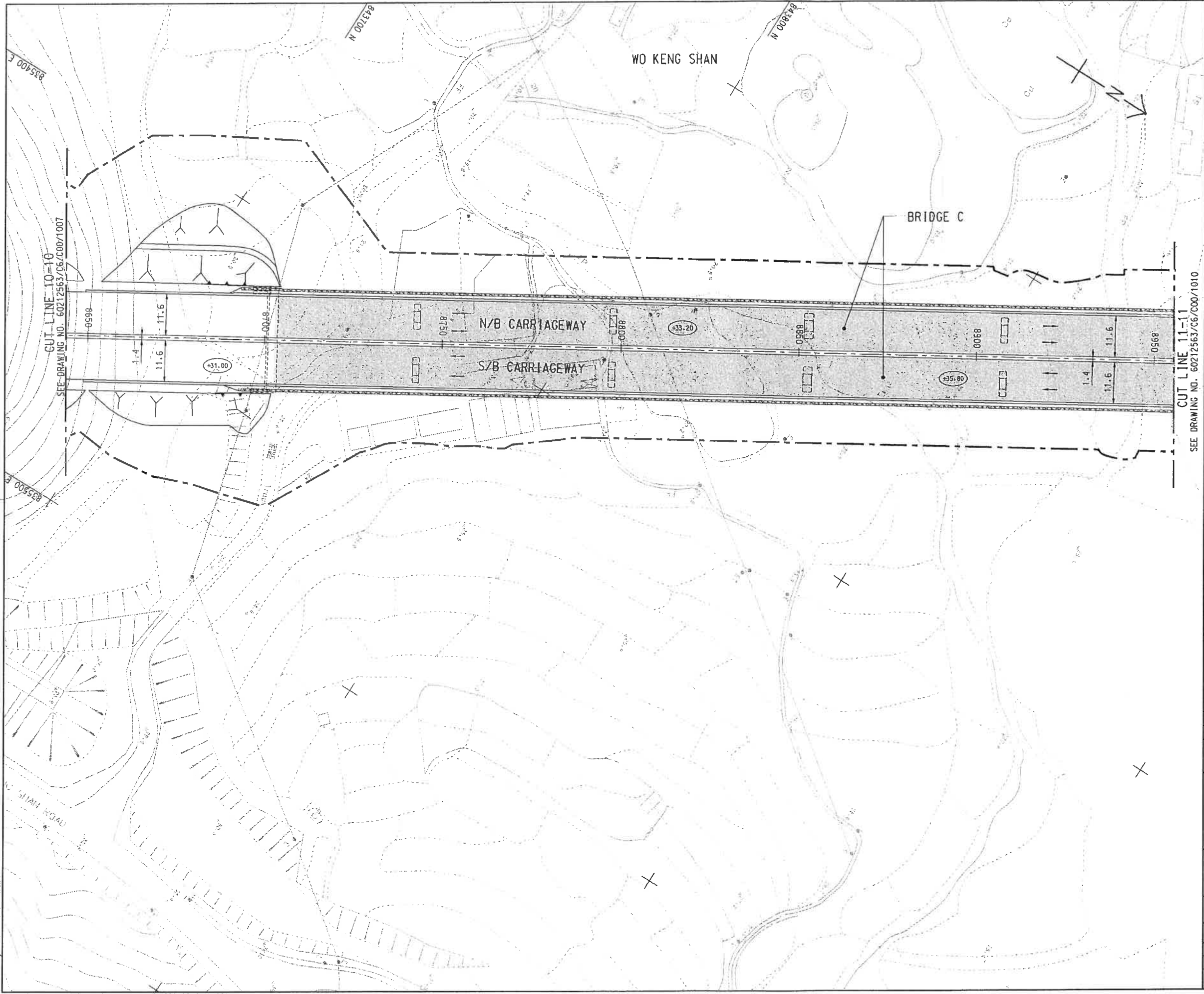
**AECOM**

DRG. NO. 60212563/C6/C00/1008  
 圖紙編號

DESIGNED BY MLC	CONTRACT NO. CV/2013/03	DATE JLY
DRAWN BY ZJ	SCALE A1 1 : 500	UNIT METRES

© COPYRIGHT RESERVED  
 版權所有

Plot File by : 2013/5/31 WUMT



**NOTE:**  
 1. FOR NOTE AND LEGEND REFER TO DRAWING NO. 60212563/C6/C00/1001.

TENDER DRAWING	REC'D	DATE
	REC'D	MAY-13

CEDD 土木工程拓展署  
 Civil Engineering and Development Department

LIAITANG/HEUNG YUEN WAI BOUNDARY CONTROL POINT  
 SITE FORMATION AND INFRASTRUCTURE WORKS - CONTRACT 6

**GENERAL LAYOUT**  
 SHEET 9 OF 18

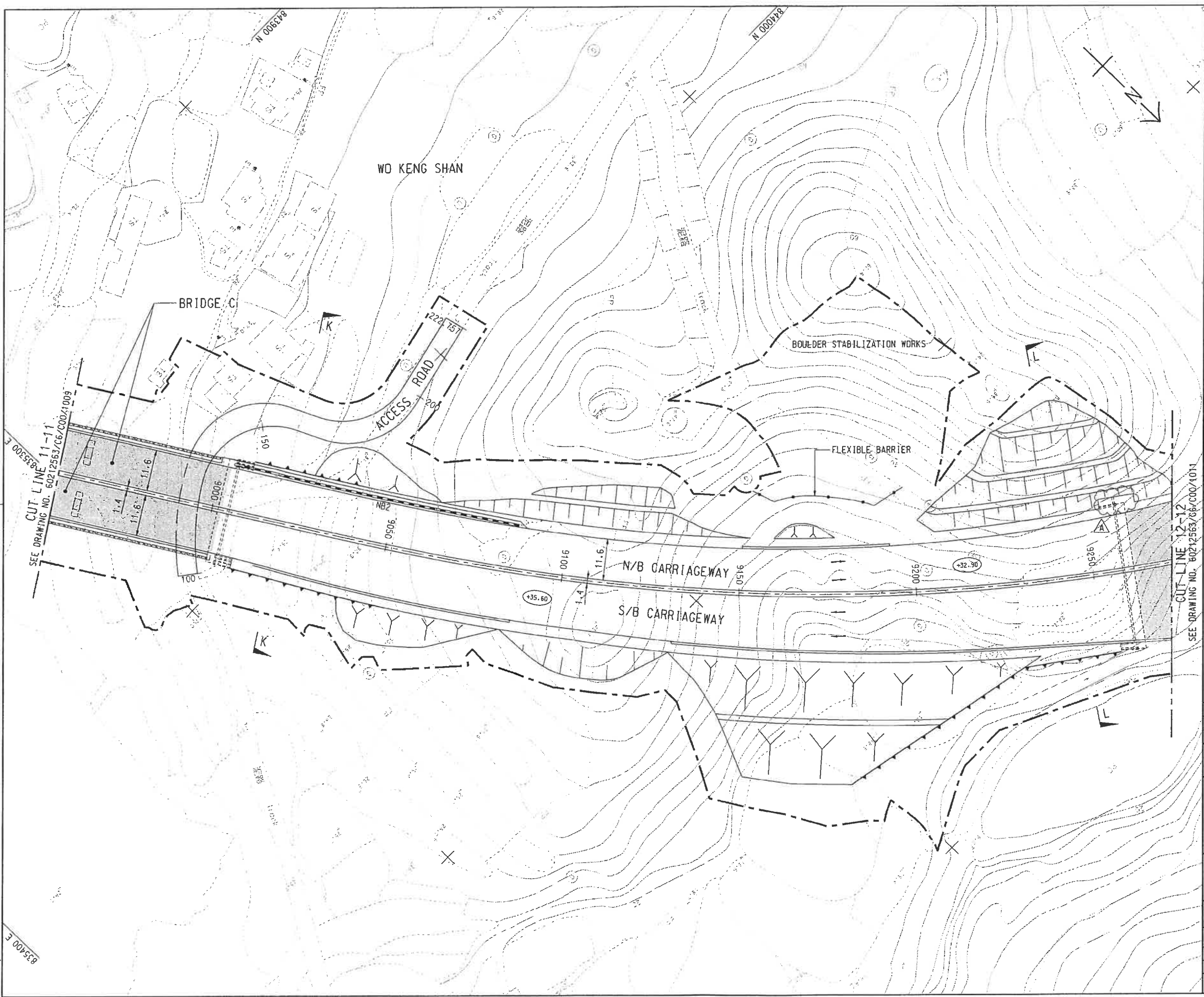


DRG. NO. 60212563/C6/C00/1009  
 圖紙編號

DESIGNED BY HLC	CONTRACT NO. CV/2013/08	P. BY, APPROVED JULY
DRAWN BY ZJ	STATUS REV	
SCALE 1:500	COPYRIGHT RESERVED 版權所有	
DIMENSIONS ARE IN METRES		

Plot File by : 2013/5/31 WUKT





**NOTE:**  
 1. FOR NOTE AND LEGEND REFER TO DRAWING NO. 60212563/C6/C00/1001.

A	TENDER ADDENDUM NO. 2	WLC KYN	SEP-13
-	TENDER DRAWING	WLC KYN	MAY-13


 土木工程拓展署  
 Civil Engineering and  
 Development Department  
 LIANTANG/HEUNG YUEN WAI BOUNDARY CONTROL POINT  
 SITE FORMATION AND INFRASTRUCTURE WORKS -  
 CONTRACT 6

**GENERAL LAYOUT**

SHEET 10 OF 18

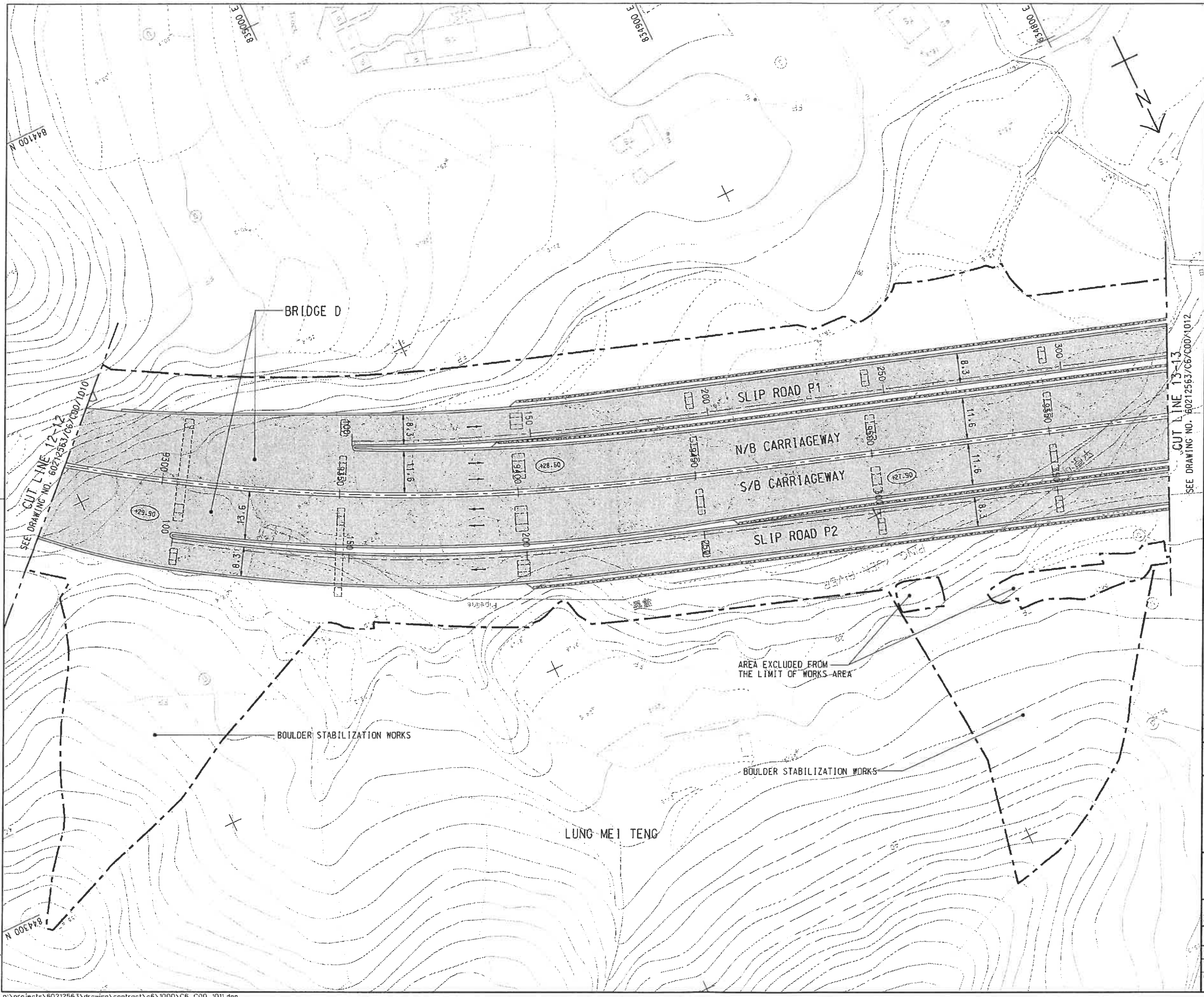


DRG. NO. 60212563/C6/C00/1010A

DESIGNED BY WLC	CONTRACT NO. CV/2013/08	P. ENG. APPROVED JLY
DRAWN BY ZJ	STATUS REV	
SCALE A1 1 : 500	DIMENSIONS ARE IN METRES	

© COPYRIGHT RESERVED  
 版權所有

Plot File By : 2013/9/6 WUMT  
 B35400 E



**NOTE:**  
 1. FOR NOTE AND LEGEND REFER TO DRAWING NO. 60212563/C6/C00/1001.

Plot File by : 2013/5/31 WUMT

REV.	DESCRIPTION	DATE
1	TENDER DRAWING	MAY-13

CEDD 土木工程拓展署  
 Civil Engineering and Development Department

L'ANTANG/HEUNG YUEN NAI BOUNDARY CONTROL POINT  
 SITE FORMATION AND INFRASTRUCTURE WORKS --  
 CONTRACT 6

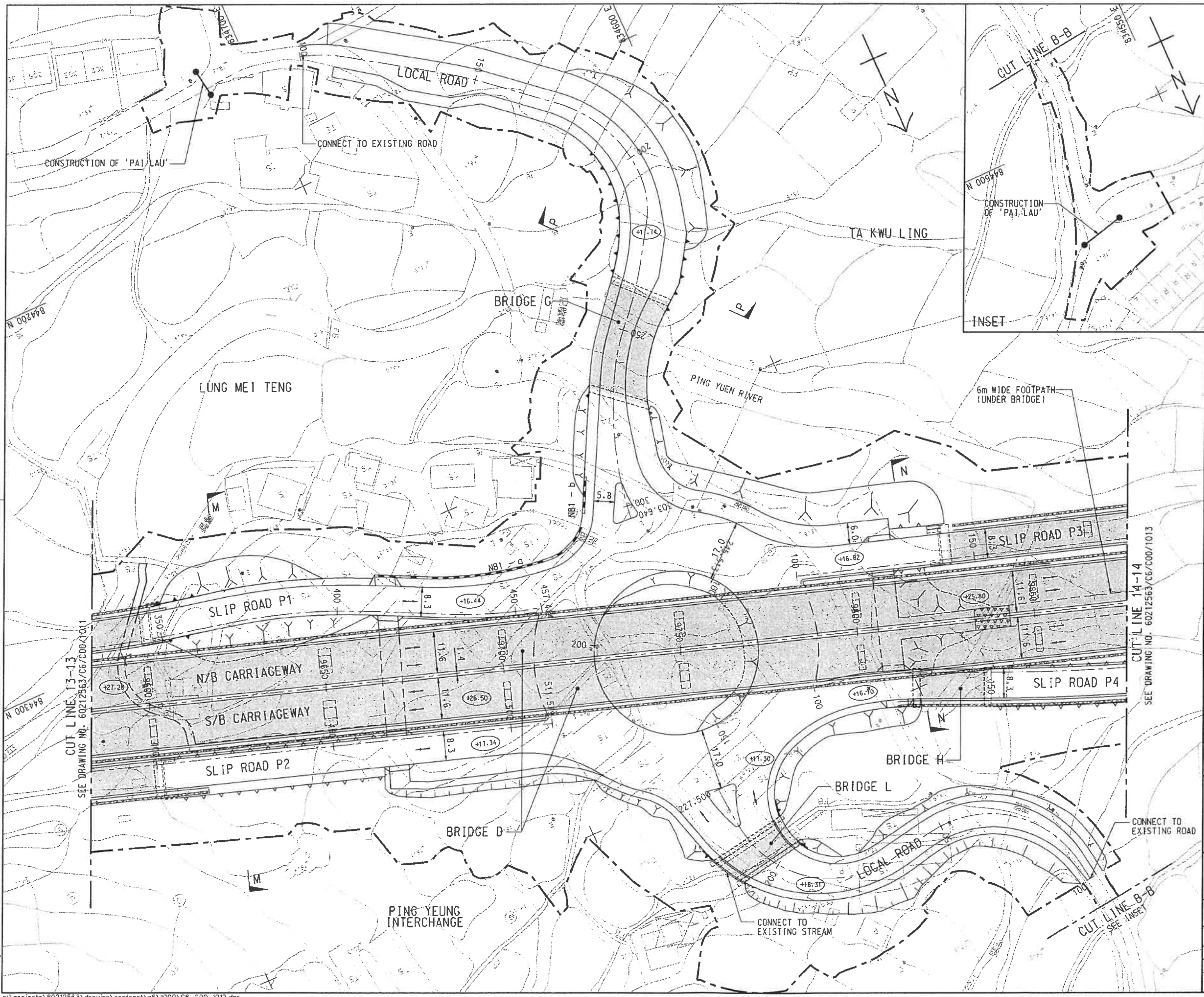
**GENERAL LAYOUT**  
 SHEET 11 OF 18



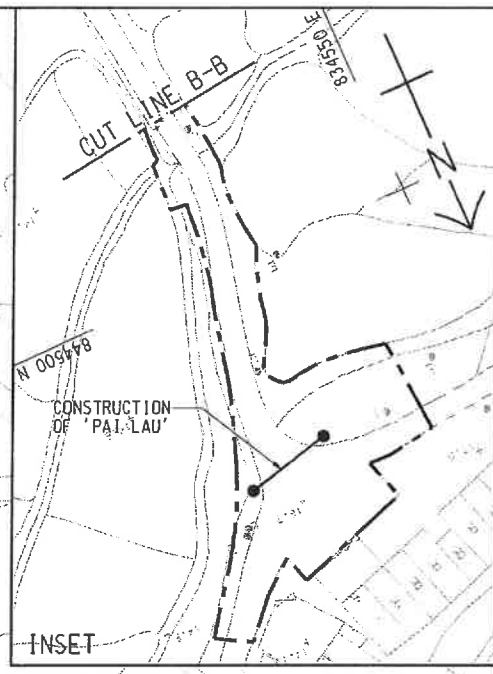
DRG. NO. 60212563/C6/C00/1011

DESIGNED BY HLC	CONTRACT NO. CV/2013/08	P. DIV. APPROVED JULY
DRAWN BY ZJ	STATUS	
SCALE 1:500	DIMENSIONS ARE IN METRES	

© COPYRIGHT RESERVED  
 版權所有



**NOTE:**  
 1. FOR NOTE AND LEGEND REFER TO DRAWING NO. 60212563/C6/C00/1001.



REVISION	DESCRIPTION	DATE
1	ISSUED FOR TENDER DRAWING	MAY-13

土木工程拓展署  
 Civil Engineering and Development Department  
 LIANTANG/HEUNG YUEN WAI BOUNDARY CONTROL POINT  
 SITE FORMATION AND INFRASTRUCTURE WORKS - CONTRACT 6

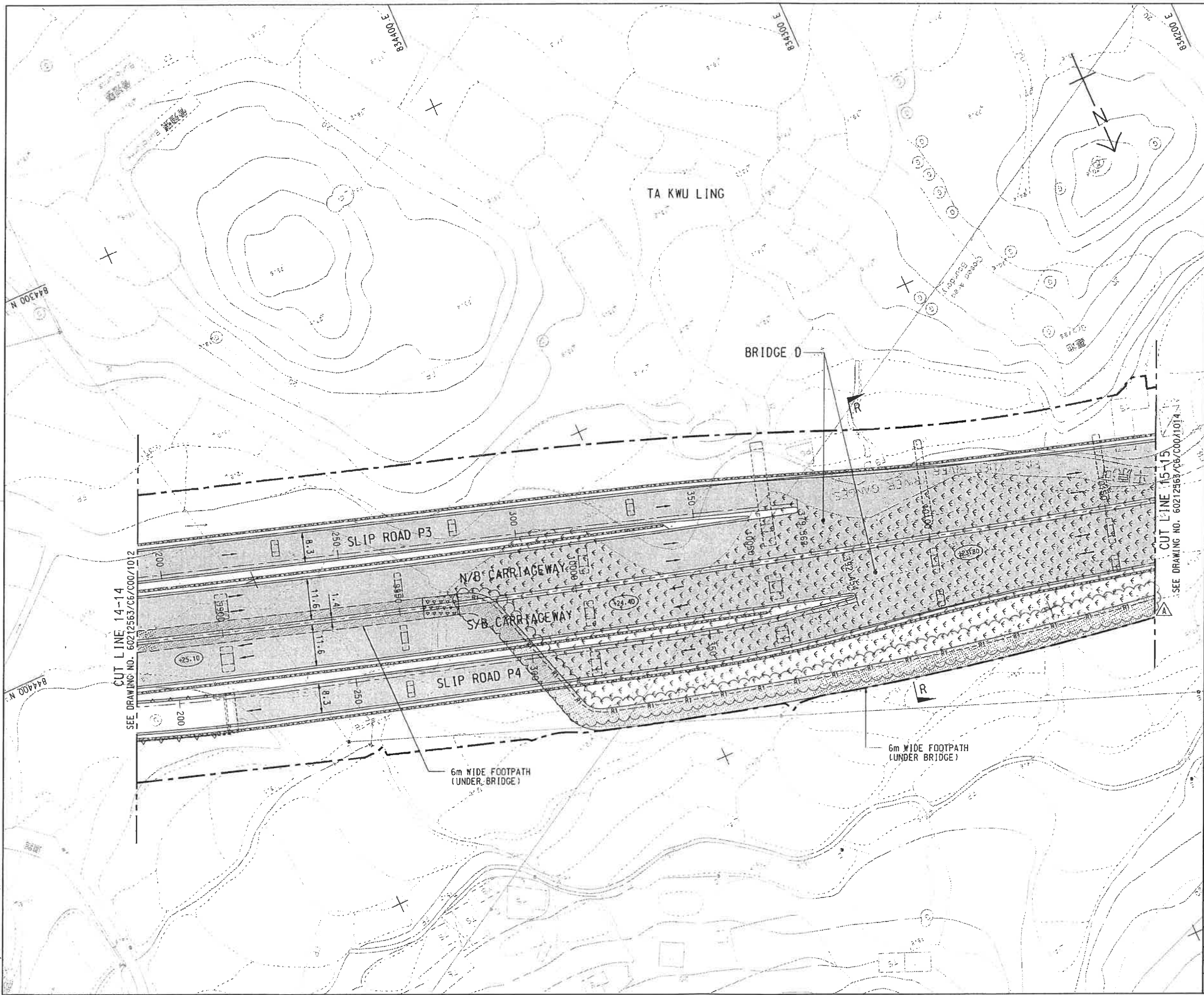
**GENERAL LAYOUT  
 (PING YEUNG INTERCHANGE)**

SHEET 12 OF 18



DRG. NO. 圖紙編號	60212563/C6/C00/1012
DESIGNED BY 設計	WLC
CHECKED BY 校核	ZJ
SCALE 比例	A1 : 1 : 500
UNITS 單位	METRES
CONTRACT NO. 合約編號	CV/2013/08
DATE 日期	JUL
APPROVED BY 核准	
© COPYRIGHT RESERVED 版權所有	

Plot File by : 2013/5/31 WJMT



NOTE:  
 1. FOR NOTE AND LEGEND REFER TO DRAWING NO. 60212563/C6/C00/1001.

CUT LINE 14-14  
 SEE DRAWING NO. 60212563/C6/C00/1012

CUT LINE 15-15  
 SEE DRAWING NO. 60212563/C6/C00/1014

A	TENDER ADDENDUM NO. 1	MLC KYN	JUL-13
-	TENDER DRAWING	MLC KYN	MAY-13
REV.	DESCRIPTION	DATE	BY

CEDD 土木工程拓展署  
 Civil Engineering and  
 Development Department  
 LIANTANG/HEUNG YUEN WAI BOUNDARY CONTROL POINT  
 SITE FORMATION AND INFRASTRUCTURE WORKS -  
 CONTRACT 6

GENERAL LAYOUT

SHEET 13 OF 18

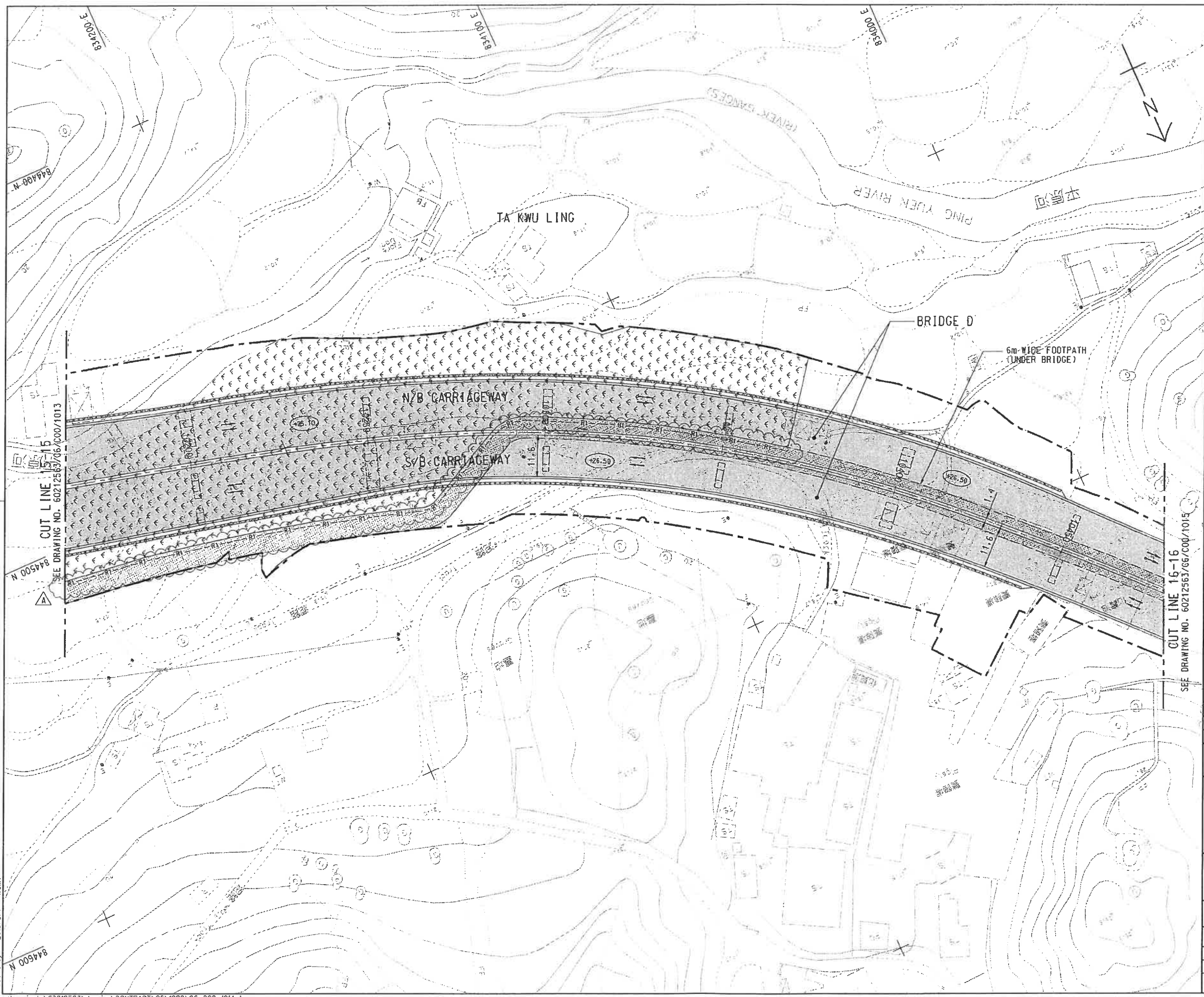


DRG. NO. 60212563/C6/C00/1013A  
 圖紙編號

DESIGNED BY MLC	CONTRACT NO. CV/2013/08	P. BY APPROVED JLT
DRAWN BY ZJ	STATUS REV.	
SCALE A1 1 : 500	DIMENSIONS ARE IN METRES	

© COPYRIGHT RESERVED  
 版權所有

Plot File by 2013/6/7 WJMT



NOTE:  
 1. FOR NOTE AND LEGEND REFER TO DRAWING NO. 60212563/C6/C00/1001.

CUT LINE 15-15  
 SEE DRAWING NO. 60212563/16/C00/1013

CUT LINE 16-16  
 SEE DRAWING NO. 60212563/66/C00/1015

A	TENDER ADDENDUM NO. 1	MLC KYN	JUL-13
-	TENDER DRAWING	MLC KYN	MAY-13
REV.	DESCRIPTION	BY	DATE

CEDD  
 土木工程拓展署  
 Civil Engineering and  
 Development Department

Liantang/Helng Yuen Wai Boundary Control Point  
 SITE FORMATION AND INFRASTRUCTURE WORKS -  
 CONTRACT 6

GENERAL LAYOUT

SHEET 14 OF 18

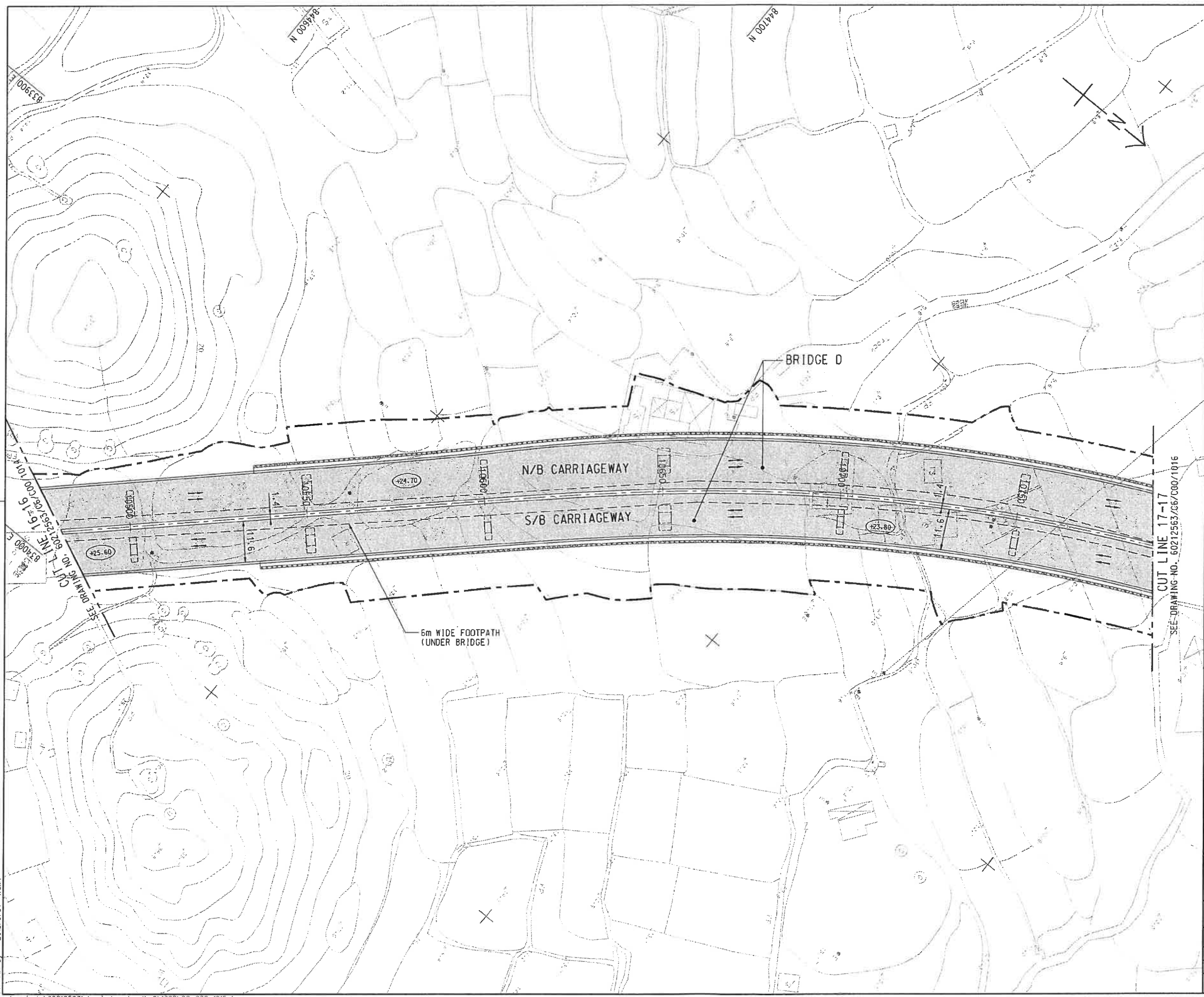
**AECOM**

DRG. NO. 60212563/C6/C00/1014A  
 圖紙編號

DESIGNED BY WLC	CONTRACT NO. CV/2013/08	P. S.P. APPROVED R.R.A. JULY
DRAWN BY Z.J.	STATUS REV.	
SCALE A1 1 : 500	DIMENSIONS ARE IN METRES	

© COPYRIGHT RESERVED  
 版權所有

Plot File by : 2013/8/7 KUMT



NOTE:  
 1. FOR NOTE AND LEGEND REFER TO DRAWING NO. 60212563/C6/C00/1001.

REV	DESCRIPTION	DATE
1	TENDER DRAWING	MAY-13

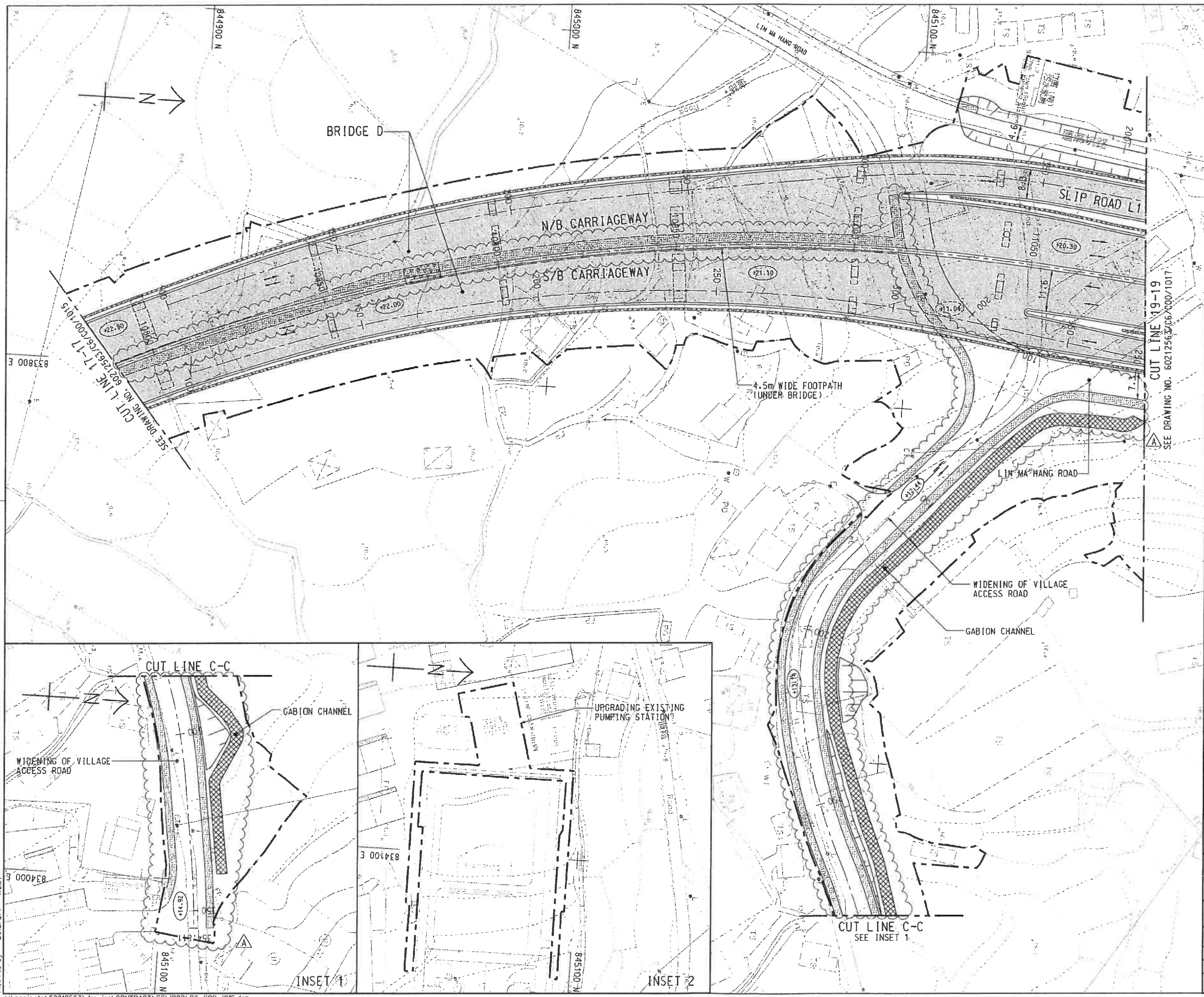
CEDD 土木工程拓展署  
 Civil Engineering and Development Department  
 LIANTANG/HEUNG YUEN WAI BOUNDARY CONTROL POINT  
 SITE FORMATION AND INFRASTRUCTURE WORKS - CONTRACT 6

GENERAL LAYOUT  
 SHEET 15 OF 18

**AECOM**

DRG. NO. 圖紙編號	60212563/C6/C00/1015	
DESIGNED BY 設計	CHECKED BY 校核	DATE 日期
MLC	CV/2013/03	JULY
DRAWN BY 繪圖	STATUS 狀態	
ZJ		
SCALE 比例	AT 1 : 500	
DIMENSIONS ARE IN 尺寸單位	METRES	
© COPYRIGHT RESERVED 版權所有		

Plot File By 2013/5/31 WUMT



**NOTE:**  
 1. FOR NOTE AND LEGEND REFER TO DRAWING NO. 60212563/C6/C00/1001.

A	TENDER ADDENDUM NO. 1	WLC	WYN	JUL-13
-	TENDER DRAWING	WLC	KYN	MAY-13

土木工程拓展署  
 Civil Engineering and  
 Development Department  
 LIANTANG/HEUNG YUEN WAI BOUNDARY CONTROL POINT  
 SITE FORMATION AND INFRASTRUCTURE WORKS -  
 CONTRACT 6

GENERAL LAYOUT

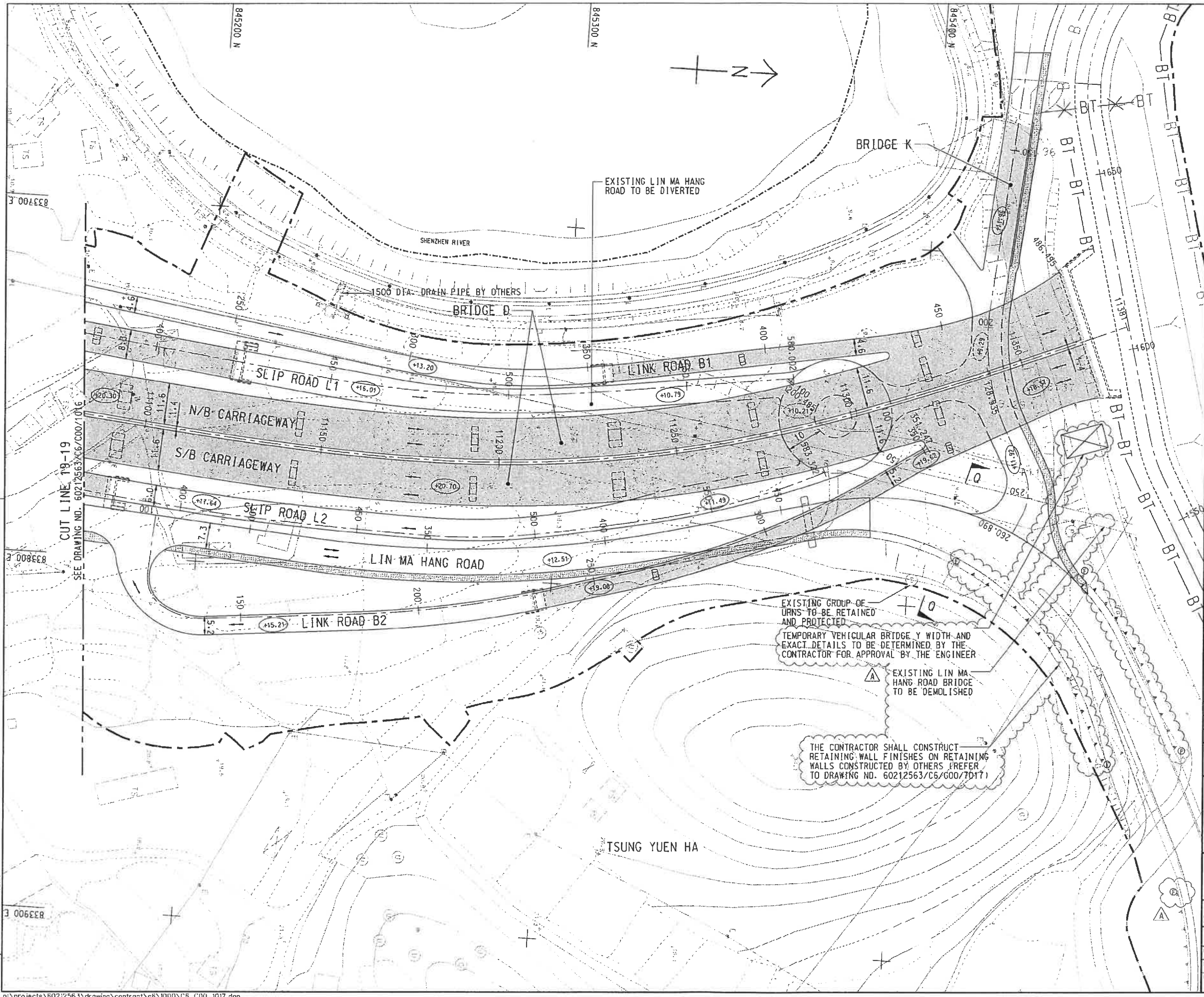
SHEET 16 OF 18

**AECOM**

DRG. NO. 60212563/C6/C00/1016A

DESIGNED BY HLC	CONTRACT NO. CV/2013/08	P. DES. APPROVED JULY
DRAWN BY ZJ	STATUS RIP	
SCALE 1:500	DIMENSIONS ARE IN METRES	
© COPYRIGHT RESERVED 版權所有		

Plot File By : 2013/8/7 WJMT



**NOTE:**  
 1. FOR NOTE AND LEGEND REFER TO DRAWING NO. 60212563/C6/C00/1001.

A	TENDER ADDENDUM NO. 3	WLC KYN	SEP-13
-	TENDER DRAWING	WLC KYN	MAY-13

CEDD  
 土木工程拓展署  
 Civil Engineering and  
 Development Department  
 LIANTANG/HEUNG YUEN YAI BOUNDARY CONTROL POINT  
 SITE FORMATION AND INFRASTRUCTURE WORKS -  
 CONTRACT 6

**GENERAL LAYOUT**  
 SHEET 17 OF 18

**AECOM**

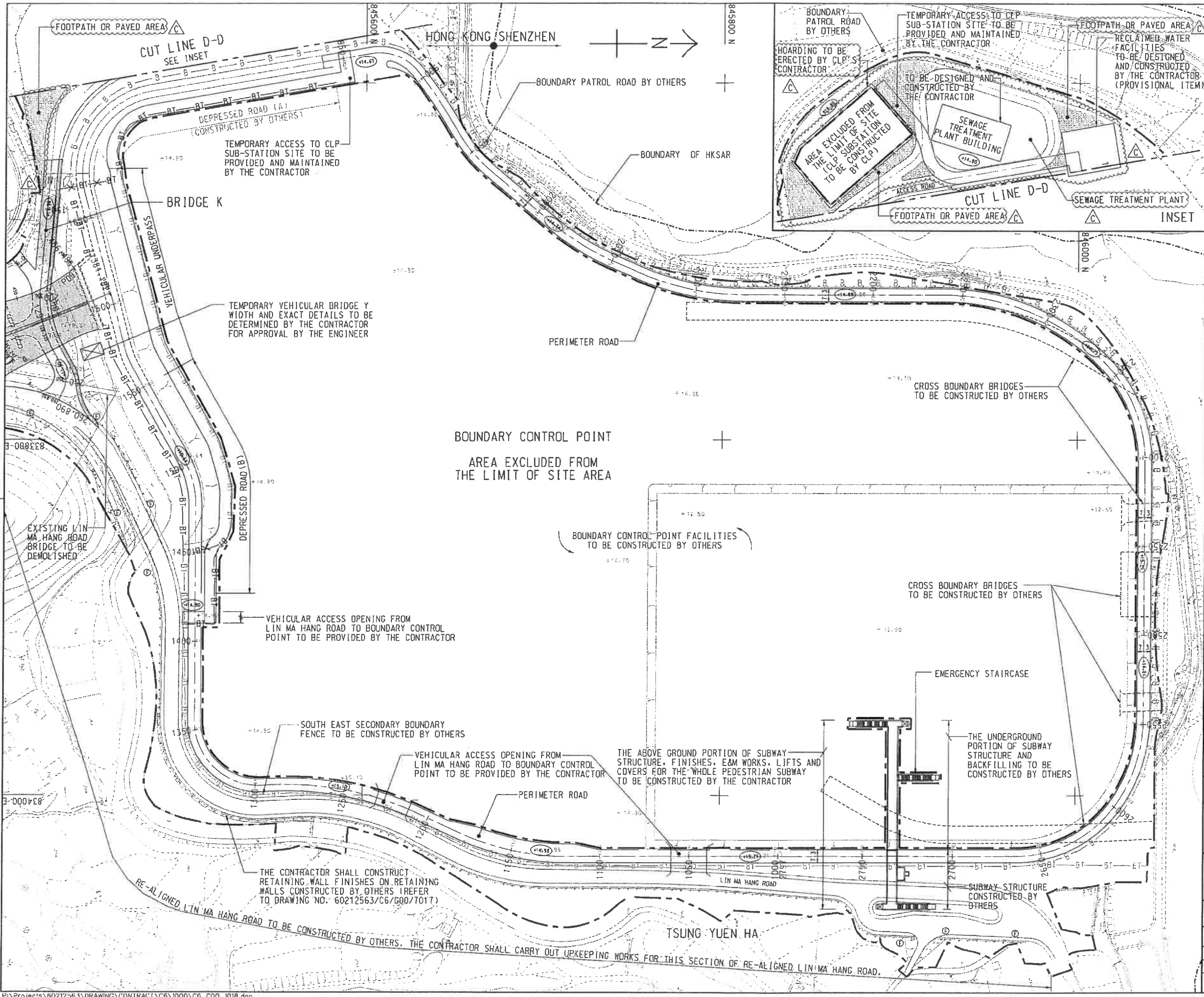
DRG. NO. 60212563/C6/C00/1017A  
 圖紙編號

DESIGNED BY WLC	CONTRACT NO. CV/2013/08	P. ENG. APPROVED JULY
DRAWN BY ZJ	SCALE 1:500	DATE JULY
SCALE 1:500	DIMENSIONS ARE IN METRES	

© COPYRIGHT RESERVED  
 版權所有

Plot File by : 2013/9/13 WUNT





NOTE:  
 1. FOR NOTE AND LEGEND REFER TO DRAWING NO. 60212563/C6/C00/1001.

C	TENDER ADDENDUM NO. 4	WLC KYN OCT-13
B	TENDER ADDENDUM NO. 3	WLC KYN SEP-13
A	TENDER ADDENDUM NO. 2	WLC KYN SEP-13
-	TENDER DRAWING	WLC KYN MAY-13

CEDD 土木工程拓展署  
 Civil Engineering and Development Department  
 LIANGTANG/HUNG YUEN WAI BOUNDARY CONTROL POINT  
 SITE FORMATION AND INFRASTRUCTURE WORKS - CONTRACT 6

GENERAL LAYOUT

SHEET 18 OF 18



DRGNO. 圖紙編號 60212563/C6/C00/1018C

DESIGNED BY WLC	CONTRACT NO. CV/2013/08	DATE JULY
DRAWN BY ZJ	STATUS REVISED	APPROVED BY JL
SCALE A1 : 1000	CHECKING ARE IN METRES	

© COPYRIGHT RESERVED  
 版權所有

Plot File by : 3/10/2013\_MAKCK