



**CONTRACT NO: DC/2016/01**

**CONSTRUCTION OF AN ADDITIONAL SEWAGE RISING MAIN  
BETWEEN TUNG CHUNG AND SIU HO WAN AND  
ASSOCIATED WORKS**

**ENTRUSTED LANDSCAPE WORKS FROM CONTRACT NO.  
HY/2012/07 TO CONTRACT NO. DC/2016/01  
UNDER ENVIRONMENTAL PERMIT NO. EP-354/2009/D**

**MONTHLY ENVIRONMENTAL MONITORING & AUDIT REPORT**

**FEBRUARY 2023**

**CLIENTS:**

**Highways Department**

**PREPARED BY:**

**Lam Environmental Services Limited**

19/F Remex Centre,  
42 Wong Chuk Hang Road,  
Hong Kong

Telephone: (852) 2882-3939  
Facsimile: (852) 2882-3331  
E-mail: [info@lamenviro.com](mailto:info@lamenviro.com)  
Website: <http://www.lamenviro.com>

**CERTIFIED BY:**

---

Raymond Dai  
Environmental Team Leader

**DATE:**

**13 March 2023**



Highways Department  
5th Floor, Ho Man Tin Government Offices  
88 Chung Hau Street  
Ho Man Tin  
Kowloon

Your reference:

Our reference: HKHYD203/50/108653

Date: 9 March 2023

Attention: Mr Eric Wong

**BY EMAIL & POST**  
**(email: se1tcl.mw@hyd.gov.hk)**

Dear Sirs

Agreement No. HMWSD 6/2022 (EP)  
Environmental Project Office for the Hong Kong-Zhuhai-Macao Bridge  
Hong Kong Link Road, Hong Kong-Zhuhai-Macao Bridge Hong Kong  
Boundary Crossing Facilities & Tuen Mun-Chek Lap Kok Link – Investigation

Contract No. DC/2016/01  
Entrusted Landscape Works from Contract No. HY/2012/07 to  
Contract No. DC/2016/01 Under Environmental Permit No.: EP-354/2009/D  
5th Monthly EM&A Report for February 2023

We refer to the email of 8 March 2023, attaching the 6th Monthly EM&A Report for February 2023 prepared by the Environmental Team (ET) of the captioned.

We have no comment and hereby verify the Monthly EM&A Report in accordance with Clause 4.4 of the Environmental Permit no. EP-354/2009/D.

Should you have any queries, please do not hesitate to contact the undersigned or our Mr Macavity Yau on 2618 2831.

Yours faithfully  
ANEWR CONSULTING LIMITED

James Choi  
Independent Environmental Checker

CPSJ/LCCR/YCFM/lsmt

cc Highways Department – Mr Nick Li (email: e1tcl.mw@hyd.gov.hk)  
Lam Environmental Services Limited – Mr Raymond Dai (email: raymond dai@lamenviro.com)  
Binnies Hong Kong Limited – Mr Charlson Leung (email: leungesc@binnies.com)

**ANewR Consulting Limited**  
Unit 517, 5/F, Tower A, Regent Centre  
63 Wo Yi Hop Road, Kwai Chung, Hong Kong  
Tel: (852) 2618 2831 Fax: (852) 3007 8648  
Email: info@anewr.com  
Web: www.anewr.com





TABLE OF CONTENTS

**1 INTRODUCTION..... 3**

1.1 Scope of the Report ..... 3

1.2 Structure of the Report..... 3

**2 PROJECT BACKGROUND ..... 4**

2.1 Background..... 4

2.2 Project Organization and Contact Personnel ..... 4

2.3 Work Activities ..... 4

**3 STATUS OF REGULATORY COMPLIANCE..... 6**

3.1 EM&A Implementation under the Project ..... 6

3.2 Status of Environmental Licensing and Permitting under the Project .. 7

**4 MONITORING PROGRAMME ..... 8**

4.1 Landscape and Visual Monitoring Requirements..... 8

4.2 Monitoring Programme ..... 9

**5 MONITORING RESULTS..... 10**

5.1 Landscape Establishment Monitoring Results ..... 10

**6 COMPLAINTS, NOTIFICATION OF SUMMONS AND PROSECUTION ..... 11**

**7 CONCLUSION ..... 12**

LIST OF TABLES

- Table 2.1 Contact Details of Key Personnel*
- Table 3.1 Monitoring Requirement of Landscape Establishment*
- Table 4.1 Landscape and Visual Mitigation Measures applicable to the entrusted landscape works*
- Table 4.2 Event and Action Plan for Landscape and Visual Impact*
- Table 4.3 Current and Upcoming Schedule of Landscape Establishment Monitoring*
- Table 6.1 Cumulative Statistics on Complaints*
- Table 6.2 Cumulative Statistics on Summons*
- Table 6.3 Cumulative Statistics on Successful Prosecutions*

LIST OF FIGURES

- [Figure 2.1 Key Plan for Entrusted Landscape Works from HY/2012/07 to DC/2016/01](#)
- [Figure 2.2 Layout Plan of Entrusted Landscape Works from HY/2012/07 to DC/2016/01 \(Sheet 1 to Sheet 7\)](#)
- [Figure 2.3 Planting Schedule of Entrusted Landscape Works from HY/2012/07 to DC/2016/01](#)
- [Figure 2.4 Project Organization Chart](#)

LIST OF APPENDICES

- [Appendix 3.1 Environmental Mitigation Implementation Schedule](#)
- [Appendix 5.1 Landscape Establishment Monitoring Checklist](#)
- [Appendix 6.1 Complaint Log](#)

## EXECUTIVE SUMMARY

- i. This is the 6<sup>th</sup> Environmental Monitoring and Audit (EM&A) Monthly Report – February 2023 as referred to the approved EM&A manual under the approved EIA report for the Agreement No. CE52/2007(HY) for the entrusted landscape works under Environmental Permit no. EP-354/2009/D, presenting the environmental monitoring findings and information recorded during the period of 01 January 2023 to 28 February 2023.

- ii. In the reporting period, the work activities conducted for the establishment period of the entrusted landscape works are as follow:

- Pruning, watering, weeding, shrubs replacement, tree replacement

### EM&A activities for the reporting period

- iii. The EM&A programme was carried out in accordance with the contract specific EM&A Manual requirements, no air quality, noise, water quality, ecology, cultural heritage and landfill gas monitoring was required for the contract.
- iv. With the completion of all the entrusted landscape works associated with the interface areas between Contract No. HY/2012/07 and DC/2016/01 along a section of Cheung Tung Road certified by the Project Manager's Delegate under Contract No. DC/2016/01 in mid-July 2022, the 24-month landscape establishment period was proposed for commencement on 14 July 2022 as per the joint inspection with HyD, IEC and ET.
- v. v.No landscape establishment monitoring was conducted in this reporting period

### Complaints, Notifications of Summons and Successful Prosecutions

- vi. No environmental complaint, notification of summons and successful prosecution regarding the construction works was recorded in the reporting period.

### Reporting Changes

- vii. No changing circumstances requiring alterations to the EM&A programme were made in the reporting period.

### Future Key Issues

- viii. In coming reporting 2 months, the scheduled construction activities for the establishment period of the entrusted landscape works are listed as follows,
  - Watering, weeding, pruning, shrubs replacement, tree replacement
- ix. Quarterly monitoring for 24-month establishment period has been commenced starting from October 2022 as notified in August 2022 via the submission of the contract specific EM&A manual to EPD.



## 1 Introduction

### 1.1 Scope of the Report

- 1.1.1. Lam Environmental Services Limited has been appointed by Penta-Ocean – Wo Hing Joint Venture (hereinafter referred to as “Contractor”) to undertake the Environmental Monitoring and Audit (EM&A) works for the Additional Entrusted Landscape Works under Contract no. DC/2016/01 (Hereafter referred as “the entrusted landscape works”).
- 1.1.2. As referred to the approved EM&A manual under the approved EIA report for the Agreement No. CE52/2007(HY) for the entrusted landscape works under Environmental Permit no. EP-354/2009/D, a contract-specific EM&A manual has been submitted to the Environmental Protection Department (EPD) and accepted for commencing EM&A programme for the establishment period of the entrusted landscape works.
- 1.1.3. This is the 6<sup>th</sup> Monthly EM&A Report – [February 2023](#) of the entrusted landscape works, presenting the environmental monitoring findings and information recorded during the period of [01 February 2023 to 28 February 2023](#).

### 1.2 Structure of the Report

- Section 1**     ***Introduction*** – details the scope and structure of the report.
- Section 2**     ***Project Background*** – summarizes background and scope of the project, site description, project organization and contact details of key personnel during the reporting period.
- Section 3**     ***Status of Regulatory Compliance*** – summarizes the status of EM&A implementation, valid Environmental Permits / Licenses during the reporting period.
- Section 4**     ***Monitoring Programme*** – summarizes all monitoring requirements, monitoring locations, monitoring frequency, and respective event and action plan and monitoring programmes.
- Section 5**     ***Monitoring Results*** – summarizes the monitoring results obtained in the reporting period.
- Section 6**     ***Complaints, Notification of summons and Prosecution*** – summarizes the cumulative statistics on complaints, notification of summons and prosecution
- Section 7**     ***Conclusion***

## 2 Project Background

### 2.1 Background

2.1.1. The entrusted landscape works associated with the interface areas between Contract No. HY/2012/07 and DC/2016/01 along a section of Cheung Tung Road form part of landscape mitigation measures as recommended under the approved EIA report (Register No.: AEIAR-146/2009). A Landscape and Visual Plan (LVP) has been submitted under Condition 2.9 of Environmental Permit EP-354/2009/D and approved by EPD.

2.1.2. Locations and planting schedule of entrusted landscape works are showed in [Figure 2.1](#), [Figure 2.2](#) and [Figure 2.3](#) respectively.

### 2.2 Project Organization and Contact Personnel

2.2.1 Highways Department is the overall project controllers for the Project. For the construction phase of the Project, Project Engineer / Supervisor, Contractor(s), Environmental Team and Independent Environmental Checker are appointed to manage and control environmental issues.

2.2.2 The project organization and lines of communication with respect to environmental protection works are shown in [Figure 2.4](#). Key personnel and contact particulars are summarized in **Table 2.1**:

**Table 2.1 Contact Details of Key Personnel**

| Party                              | Role                                | Post                                    | Name                 | Contact No. | Contact Fax |
|------------------------------------|-------------------------------------|---|----------------------|-------------|-------------|
| Highways Department (HyD)          | Project Proponent                   | Principal Project Coordinator           | LO Kwok-chung, David | 2762 4153   | 3188 6614   |
| Drainage Services Department (DSD) | Project Manager                     | Engineer / Consultants Management       | Marcus LAU           | 2594 7218   | 3104 6426   |
| Binnies Hong Kong Limited          | Project Manager's Delegate          | Senior Resident Engineer                | Charlson LEUNG       | 3757 6615   | 3100 0143   |
| Penta-Ocean Wo Hing JV             | Contractor                          | Sub Agent                               | Sandy NGAN           | 9280 6602   | 2398 8301   |
| ANewR Consulting Limited           | Environmental Project Office (ENPO) | Independent Environmental Checker (IEC) | James CHOI           | 2618 2831   | 3007 8648   |
| Lam Environmental Services Limited | Environmental Team (ET)             | Environmental Team Leader (ETL)         | Raymond DAI          | 2882 3939   | 2882 3331   |

### 2.3 Work Activities

2.3.1 In the reporting period, the work activities conducted for the establishment period of the entrusted landscape works are as follows,



- Pruning, watering, weeding, shrubs replacement, tree replacement

2.3.2 In coming reporting 2 months, the scheduled construction activities for the establishment period of the entrusted landscape works are listed as follows,

- Pruning, weeding, watering, shrubs replacement, tree replacement

### 3 Status of Regulatory Compliance

#### 3.1 EM&A Implementation under the Project

3.1.1. As per the a contract-specific EM&A manual submitted to and accepted by EPD, the monitoring and audit requirements of the environmental aspects of the EM&A programme for the establishment period of the entrusted landscape works are summarized in the sub-sections below,

##### Air Quality

3.1.2. Scopes of the entrusted landscape works do not involve any of works listed under Section 4.4.1.1 of the approved EIA Report. Vehicles travel under this contract was carried out in paved area. Therefore, fugitive dust emission from the contract would be limited and no unacceptable air quality impact would be expected and no specific monitoring and mitigation measures would be required.

##### Noise

3.1.3. Most of the works under the entrusted landscape works would be conducted manually, with limited use of Power Mechanical Equipment (PME) for delivery material on site and watering the planting area along the road side. Therefore, no unacceptable noise impact would be expected and no specific monitoring and mitigation measures would be required.

##### Water Quality

3.1.4. All planting area under the entrusted landscape works are land-based, no major discharge would be expected from the establishment planting maintenance works. Therefore, no direct or indirect impact on marine water quality would be expected and no specific monitoring and mitigation measures would be required.

##### Ecology

3.1.5. No site clearance and associated habitat loss would be required under this contract. Moreover, all planting area under this contract area are land-based, no direct or indirect impact on the marine ecology would be expected. Therefore, no specific monitoring and mitigation measures would be required.

##### Landscape and Visual

3.1.6. The approved EIA report (Register No.: AEIAR-146/2009) has recommended landscape and visual mitigation measures to be undertaken. Furthermore, Section 7.3 of the Updated EM&A Manual for the TM-CLK Link Project has recommended monitoring and audit of these measures as referred to the design laid down in the Landscape and Visual Plan (LVP) submitted under Condition 2.9 of Environmental Permit EP-354/2009/D approved by EPD.

3.1.7. Monitoring and audit is necessary for monitoring of landscape establishment stage for fulfilling the requirements in Section 7 of the Updated EM&A Manual for the TM-CLK Link Project are presented in **Table 3.1**.

**Table 3.1 Monitoring Requirement of Landscape Establishment**

| Stage               | Monitoring Task   | Monitoring Report                        | Form Approval of                   | Frequency |
|---------------------|---|--|------------------------------------|-----------|
| Establishment Works | Monitoring of the planting works during the 24-month Establishment period after completion of the construction works. | Report on Contractor's compliance, by ET | Counter-signature of report by IEC | Quarterly |

Remark:

\*Quarterly monitoring for 24-month establishment period will be commenced starting from October 2022 as notified in August 2022 via the submission of the contract specific EM&A manual to EPD.

3.1.8. Implementation status of the recommended mitigation measures is presented in [Appendix 3.1](#).

Waste Management

3.1.9. All planting area under the entrusted landscape works are land-based, no dredged sediment, excavated C&D material, C&D waste, chemical waste and sewage would be generated. With only limited level of dead plant would be generated from works during maintenance of the planting area handled as part of overall waste management under Contract No. DC/2016/01 instead of as part of the EM&A under TM-CLKL project easily controlled by standard waste management practice, no specific monitoring and mitigation measure would be required.

Cultural Heritage

3.1.10. No historical/heritage object is required to be handled, no specific monitoring and mitigation measures would be required.

Landfill Gas

3.1.11. No landfill gas hazard is required to be handled, no specific monitoring and mitigation measures would be required.

**3.2 Status of Environmental Licensing and Permitting under the Project**

3.2.1. As reported by contractor, no environmental license and permit are applicable to the area of the entrusted landscape works in the reporting period.

#### 4 Monitoring Programme

##### 4.1 Landscape and Visual Monitoring Requirements

4.1.1. As referred to layout plan of the entrusted landscape works, the landscape and visual impact mitigation measures applicable to the entrusted landscape works are listed in **Table 4.1**:

**Table 4.1 Landscape and Visual Mitigation Measures applicable to the entrusted landscape works**

| Ref. | Landscape and Visual Mitigation Measures  |
|------|---|
| CM2  | Trees unavoidably affected by the works shall be transplanted where practical. Trees will be transplanted straight to their final receptor site and not held in a temporary nursery. A detailed Tree Transplanting Specification shall be provided in the Contract Specification*. Sufficient time for necessary tree root and crown preparation periods shall be allowed in the project programme. |
| CM10 | Compensatory tree planting shall be provided to the satisfaction of relevant Government departments**. Required numbers and locations of compensatory trees shall be determined and agreed separately with Government during the Tree Felling Application process under ETWBTC 3/2006.  |
| OM4  | Structure, ornamental tree / shrub / climber planting should be provided along roadside amenity strips, central dividers and newly formed slopes to enhance the townscape quality and further greenery enhancement.   |

Remark:

Mitigation measures OM1, OM2, OM3, OM5 and OM6 are NOT applicable to the entrusted landscape works.

\*Approved L&VP states that under the Contract Specification for HY/2012/07, 'Transplanted trees shall be relocated to the specified locations under single handling where possible. If it not possible, the Contractor shall make provision for the relocation of the transplanted trees temporarily to a holding nursery and replanting back of the transplanted trees to the specified locations.' As such, 5 transplant trees no. A149, NL0483, NL0489, NL0490 and NL0498 have been maintained in landscape sub-contractor's nursery to be replanted to final receptor site at Area 3A.

\*\*Change of tree nos. ET092 and ET093 from *Peltophorum tonkinense* 銀珠 to *Xanthostemon chrysanthus* 黃金蒲桃/澳洲黃花樹(due to lack of availability) is approved by AECOM, DSD Landscape Unit, HyD and LCSD.

4.1.2. Should non-compliance of the landscape and visual impacts occur, actions in accordance with the action plan as presented in **Table 4.2** should be carried out.



**Table 4.2 Event and Action Plan for Landscape and Visual Impact**

| EVENT ACTION LEVEL             | ACTION   |  |  |   |
|--------------------------------|--|--|--|---|
|                                | ET   | IEC  | PMD  | CONTRACTOR  |
| Design Check                   | <ul style="list-style-type: none"> <li>Check final design conforms to the requirements of EP and prepare report</li> </ul>   | <ul style="list-style-type: none"> <li>Check report.</li> <li>Recommend remedial design if necessary</li> </ul>  | <ul style="list-style-type: none"> <li>Undertake remedial design if necessary</li> </ul>                                       |   |
| Non-conformity on one occasion | <ul style="list-style-type: none"> <li>Identify Source</li> <li>Inform IEC and PMD</li> <li>Discuss remedial actions with IEC, PMD and Contractor</li> <li>Monitor remedial actions until rectification has been completed</li> </ul>  | <ul style="list-style-type: none"> <li>Check report</li> <li>Check Contractor's working method</li> <li>Discuss with ET and Contractor on possible remedial measures</li> <li>Advise PMD on effectiveness of proposed remedial measures.</li> <li>Check implementation of remedial measures</li> </ul>               | <ul style="list-style-type: none"> <li>Notify Contractor</li> <li>Ensure remedial measures are properly implemented</li> </ul> | <ul style="list-style-type: none"> <li>Amend working methods</li> <li>Rectify damage and undertake any necessary replacement</li> </ul> |
| Repeated Non-conformity        | <ul style="list-style-type: none"> <li>Identify Source</li> <li>Inform IEC and PMD</li> <li>Increase monitoring frequency</li> <li>Discuss remedial actions with IEC, PMD and Contractor</li> <li>Monitor remedial actions until rectification has been completed</li> <li>If non-conformity stops, cease additional monitoring</li> </ul> | <ul style="list-style-type: none"> <li>Check monitoring report</li> <li>Check Contractor's working method</li> <li>Discuss with ET and Contractor on possible remedial measures</li> <li>Advise PMD on effectiveness of proposed remedial measures</li> <li>Supervise implementation of remedial measures</li> </ul> | <ul style="list-style-type: none"> <li>Notify Contractor</li> <li>Ensure remedial measures are properly implemented</li> </ul> | <ul style="list-style-type: none"> <li>Amend working methods</li> <li>Rectify damage and undertake any necessary replacement</li> </ul> |

## 4.2 Monitoring Programme

- 4.2.1. With the completion of all the entrusted landscape works associated with the interface areas between Contract No. HY/2012/07 and DC/2016/01 along a section of Cheung Tung Road certified by the Project Manager's Delegate under Contract No. DC/2016/01 in mid-July 2022, the 24-month landscape establishment period was proposed for commencement on 14 July 2022 as per the joint inspection with HyD, IEC and ET.
- 4.2.2. Quarterly monitoring for 24-month establishment period will be commenced starting from October 2022 as notified to EPD in August 2022 via the submission of the contract specific EM&A manual to EPD. Tentative monitoring schedule is presented in **Table 4.3**:

**Table 4.3 Current and Upcoming Schedule of Landscape Establishment Monitoring**

| Month         | Monitoring Location                                 |
|---------------|---|
| February 2023 | Nil   |
| April 2023    | Entrusted landscape areas (c.f. <b>Figure 1.2</b> ) |



## 5 Monitoring Results

### 5.1 Landscape Establishment Monitoring Results

No landscape establishment monitoring was conducted in this reporting period. Detailed information are referred to [Appendix 5.1](#).

**6 Complaints, Notification of Summons and Prosecution**

- 6.0.1. No environmental complaint, notification of summons and successful prosecution associated with entrusted landscape establishment was recorded for the in the reporting period.
- 6.0.2. The details of cumulative complaint log and updated summary of complaints are presented in [Appendix 6.1](#).
- 6.0.3. Cumulative statistic on complaints, notification of summons and successful prosecutions are summarized in **Table 6.1**, **Table 6.2** and **Table 6.3** respectively.

**Table 6.1 Cumulative Statistics on Complaints**

| Reporting Period  | No. of Complaints |
|---|-------------------|
| February 2023   | 0                 |
| Project commencement to the end of last reporting month | -                 |
| <b>Total</b>  | <b>0</b>          |

**Table 6.2 Cumulative Statistics on Summons**

| Month to Date | Cumulative No. Brought Forward | No. of Summons this month (Offence Date) | Cumulative No. Project-to-Date |
|---------------|--------------------------------|--|--------------------------------|
| February 2023 | -                              | 0  | 0                              |
| <b>Total</b>  | <b>-</b>                       | <b>0</b>                                 | <b>0</b>                       |

**Table 6.3 Cumulative Statistics on Successful Prosecutions**

| Month to Date | Cumulative No. Brought Forward | No. of Successful Prosecutions this month (Offence Date) | Cumulative No. Project-to-Date |
|---------------|--------------------------------|--|--------------------------------|
| February 2023 | -                              | 0  | 0                              |
| <b>Total</b>  | <b>-</b>                       | <b>0</b>   | <b>0</b>                       |

## **7 Conclusion**

- 7.0.1. The EM&A programme was carried out in accordance with the contract specific EM&A Manual requirements, no air quality, noise, water quality, ecology, cultural heritage and landfill gas monitoring was required for the contract. No alterations to the programme proposed were made in response to changing circumstances.
- 7.0.2. With the completion of all the entrusted landscape works associated with the interface areas between Contract No. HY/2012/07 and DC/2016/01 along a section of Cheung Tung Road certified by the Project Manager's Delegate under Contract No. DC/2016/01 in mid-July 2022, the 24-month landscape establishment period was proposed for commencement on 14 July 2022 as per the joint inspection with HyD, IEC and ET.
- 7.0.3. **No** landscape establishment monitoring was conducted in this reporting period. Quarterly monitoring for 24-month establishment period will be commenced starting from October 2022 as notified in August 2022 via the submission of the contract specific EM&A manual to EPD.
- 7.0.4. **No** environmental complaint, notification of summons and successful prosecution associated with entrusted landscape establishment was recorded for the in the reporting period.



## ***Appendix 3.1***

# ***Environmental Mitigation Implementation Schedule***

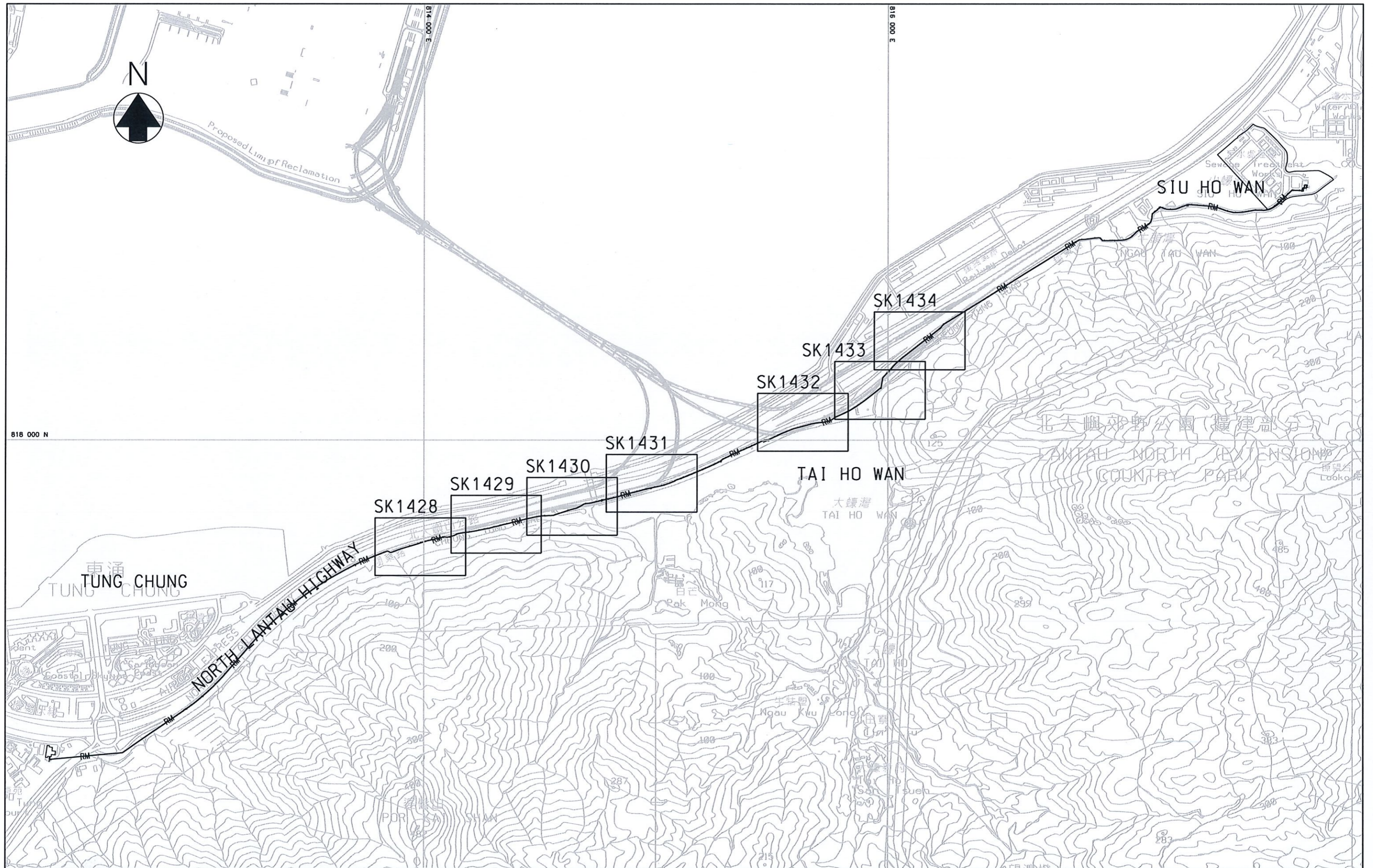


## ***Figure 2.1***

# ***Key Plan for Entrusted Landscape Works from HY/2012/07 to DC/2016/01***



Figure 2.1



|                    |   |   |                               |   |                      |
|--------------------|---|---|-------------------------------|---|----------------------|
| <b>LEGENDS</b><br> | <b>Project</b><br>CONTRACT NO. DC/2016/01<br>CONSTRUCTION OF AN ADDITIONAL SEWAGE RISING MAIN BETWEEN TUNG CHUNG AND SIU HO WAN AND ASSOCIATED WORKS<br>建造東涌至小蠔灣額外污水泵喉及附屬工程 | 香港特別行政區政府渠務署<br>THE GOVERNMENT OF THE HONG KONG SPECIAL ADMINISTRATIVE REGION<br>DRAINAGE SERVICES DEPARTMENT | <b>Drawn by</b><br>KYC        | <b>Date</b><br>22/10/2021               |                      |
|                    | <b>Title</b><br>KEY PLAN FOR ENTRUSTED LANDSCAPE WORKS FROM HY/2012/07 TO DC/2016/01  |   | <b>Checked by</b><br>B P S BS | <b>Scale</b><br>A3 1 : 15000            |                      |
|                    |   | BINNIES HONG KONG LIMITED<br>賓尼斯工程顧問有限公司  | <b>Approved by</b><br>CL      | <b>Sketch no.</b><br>DC/2016/01/SK/1427 | <b>Revision</b><br>- |

Plot Date = 11/3/2021



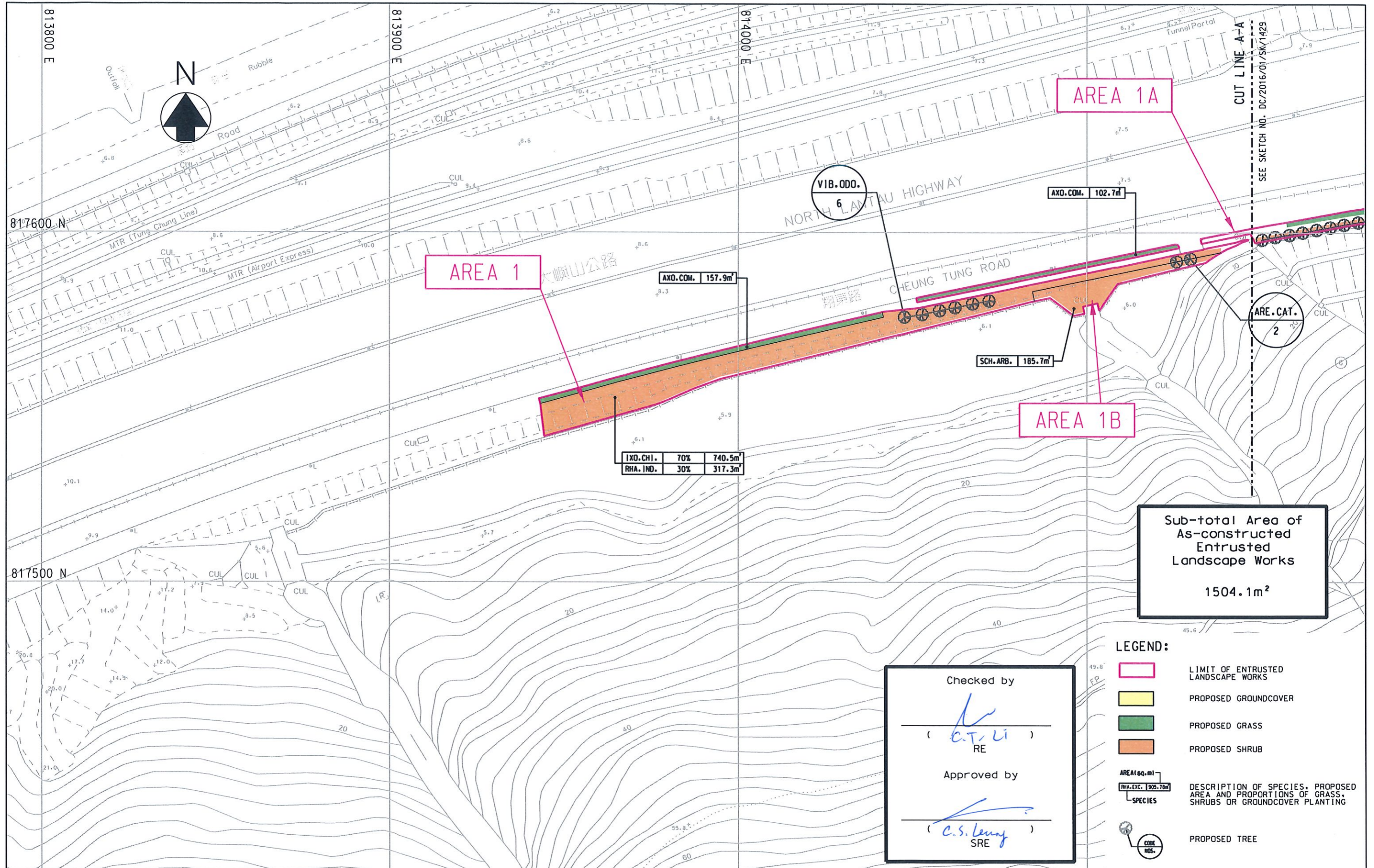


## ***Figure 2.2***

# ***Layout Plan of Entrusted Landscape Works from HY/2012/07 to DC/2016/01 (Sheet 1 to Sheet 7)***



Figure 2.2

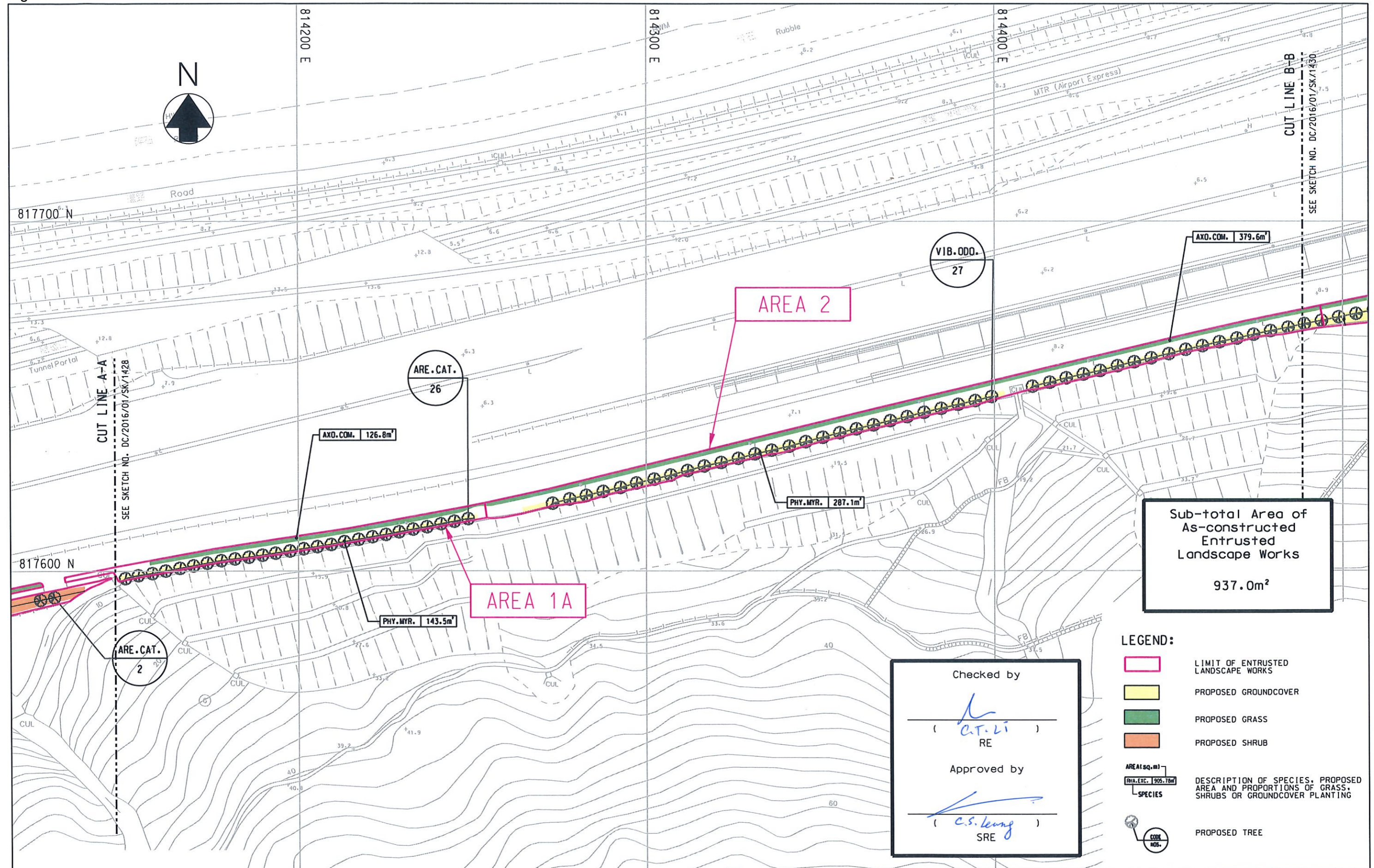


|   |   |  |                                  |                      |
|---|---|--|----------------------------------|----------------------|
| <b>NOTES:</b><br>1. PLANTING SCHEDULE REFERS TO SITE SKETCH NO. DC/2016/01/SK/1435. | <b>Project</b><br>CONTRACT NO. DC/2016/01<br>CONSTRUCTION OF AN ADDITIONAL SEWAGE RISING MAIN BETWEEN TUNG CHUNG AND SIU HO WAN AND ASSOCIATED WORKS<br>建造東涌至小蠔灣額外污水泵喉及附屬工程 | 香港特別行政區政府渠務署<br>THE GOVERNMENT OF THE HONG KONG SPECIAL ADMINISTRATIVE REGION<br>DRAINAGE SERVICES DEPARTMENT<br><br>binnies<br>BINNIES HONG KONG LIMITED<br>賓尼士工程顧問有限公司 | Drawn by<br>C T L                | Date<br>19/04/2022   |
|   | <b>Title</b><br>LAYOUT PLAN OF ENTRUSTED LANDSCAPE WORKS FROM HY/2012/07 TO DC/2016/01 (SHEET 1 OF 7)   |  | Checked by<br>B P S              | Scale<br>A3 1 : 1000 |
|   | Approved by<br>C L  |  | Sketch no.<br>DC/2016/01/SK/1428 | Revision<br>B        |

Plot Date = 4/19/2022



Figure 2.2



Plot Date = 09/06/2022

CAD Filename = Q:\Technical\TO\Site Sketch\SK1429B.dgn

|                |   |
|----------------|---|
| <b>Project</b> | CONTRACT NO. DC/2016/01<br>CONSTRUCTION OF AN ADDITIONAL SEWAGE RISING MAIN BETWEEN TUNG CHUNG AND SIU HO WAN AND ASSOCIATED WORKS<br>建造東涌至小蠔灣額外污水泵喉及附屬工程 |
| <b>Title</b>   | LAYOUT PLAN OF ENTRUSTED LANDSCAPE WORKS FROM HY/2012/07 TO DC/2016/01 (SHEET 2 OF 7)   |

Checked by  
(Signature)  
RE

Approved by  
(Signature)  
SRE

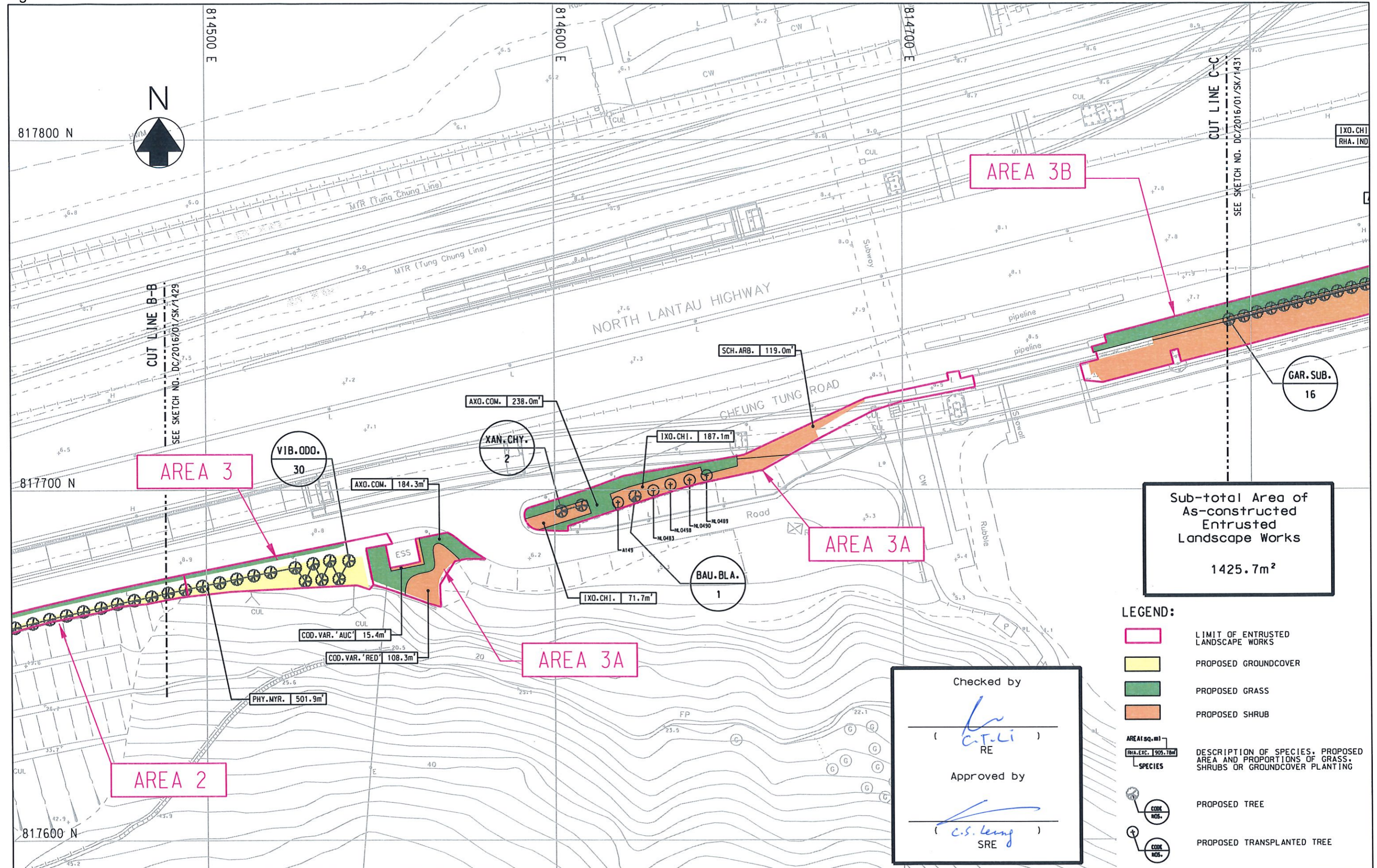
香港特別行政區政府渠務署  
THE GOVERNMENT OF THE HONG KONG SPECIAL ADMINISTRATIVE REGION  
DRAINAGE SERVICES DEPARTMENT

**binnies**  
BINNIES HONG KONG LIMITED  
賓尼斯工程顧問有限公司

|                    |       |                   |                    |
|--------------------|-------|-------------------|--------------------|
| <b>Drawn by</b>    | C T L | <b>Date</b>       | 19/04/2022         |
| <b>Checked by</b>  | B P S | <b>Scale</b>      | A3 1 : 1000        |
| <b>Approved by</b> | C L   | <b>Sketch no.</b> | DC/2016/01/SK/1429 |
|                    |       | <b>Revision</b>   | B                  |



Figure 2.2



Checked by  
*(Signature)*  
 RE  
 Approved by  
*(Signature)*  
 SRE

Sub-total Area of As-constructed Entrusted Landscape Works  
 1425.7m<sup>2</sup>

- LEGEND:**
- LIMIT OF ENTRUSTED LANDSCAPE WORKS
  - PROPOSED GROUNDCOVER
  - PROPOSED GRASS
  - PROPOSED SHRUB
  - AREA 1 sq.m
  - AREA 2 sq.m
  - AREA 3 sq.m
  - AREA 4 sq.m
  - AREA 5 sq.m
  - AREA 6 sq.m
  - AREA 7 sq.m
  - AREA 8 sq.m
  - AREA 9 sq.m
  - AREA 10 sq.m
  - AREA 11 sq.m
  - AREA 12 sq.m
  - AREA 13 sq.m
  - AREA 14 sq.m
  - AREA 15 sq.m
  - AREA 16 sq.m
  - AREA 17 sq.m
  - AREA 18 sq.m
  - AREA 19 sq.m
  - AREA 20 sq.m
  - AREA 21 sq.m
  - AREA 22 sq.m
  - AREA 23 sq.m
  - AREA 24 sq.m
  - AREA 25 sq.m
  - AREA 26 sq.m
  - AREA 27 sq.m
  - AREA 28 sq.m
  - AREA 29 sq.m
  - AREA 30 sq.m
  - AREA 31 sq.m
  - AREA 32 sq.m
  - AREA 33 sq.m
  - AREA 34 sq.m
  - AREA 35 sq.m
  - AREA 36 sq.m
  - AREA 37 sq.m
  - AREA 38 sq.m
  - AREA 39 sq.m
  - AREA 40 sq.m
  - AREA 41 sq.m
  - AREA 42 sq.m
  - AREA 43 sq.m
  - AREA 44 sq.m
  - AREA 45 sq.m
  - AREA 46 sq.m
  - AREA 47 sq.m
  - AREA 48 sq.m
  - AREA 49 sq.m
  - AREA 50 sq.m
  - AREA 51 sq.m
  - AREA 52 sq.m
  - AREA 53 sq.m
  - AREA 54 sq.m
  - AREA 55 sq.m
  - AREA 56 sq.m
  - AREA 57 sq.m
  - AREA 58 sq.m
  - AREA 59 sq.m
  - AREA 60 sq.m
  - AREA 61 sq.m
  - AREA 62 sq.m
  - AREA 63 sq.m
  - AREA 64 sq.m
  - AREA 65 sq.m
  - AREA 66 sq.m
  - AREA 67 sq.m
  - AREA 68 sq.m
  - AREA 69 sq.m
  - AREA 70 sq.m
  - AREA 71 sq.m
  - AREA 72 sq.m
  - AREA 73 sq.m
  - AREA 74 sq.m
  - AREA 75 sq.m
  - AREA 76 sq.m
  - AREA 77 sq.m
  - AREA 78 sq.m
  - AREA 79 sq.m
  - AREA 80 sq.m
  - AREA 81 sq.m
  - AREA 82 sq.m
  - AREA 83 sq.m
  - AREA 84 sq.m
  - AREA 85 sq.m
  - AREA 86 sq.m
  - AREA 87 sq.m
  - AREA 88 sq.m
  - AREA 89 sq.m
  - AREA 90 sq.m
  - AREA 91 sq.m
  - AREA 92 sq.m
  - AREA 93 sq.m
  - AREA 94 sq.m
  - AREA 95 sq.m
  - AREA 96 sq.m
  - AREA 97 sq.m
  - AREA 98 sq.m
  - AREA 99 sq.m
  - AREA 100 sq.m

**Project** CONTRACT NO. DC/2016/01  
 CONSTRUCTION OF AN ADDITIONAL SEWAGE RISING MAIN BETWEEN TUNG CHUNG AND SIU HO WAN AND ASSOCIATED WORKS  
 建造東涌至小蠔灣額外污水泵喉及附屬工程

**Title** LAYOUT PLAN OF ENTRUSTED LANDSCAPE WORKS FROM HY/2012/07 TO DC/2016/01 (SHEET 3 OF 7)

香港特別行政區政府渠務署  
 THE GOVERNMENT OF THE HONG KONG SPECIAL ADMINISTRATIVE REGION  
 DRAINAGE SERVICES DEPARTMENT

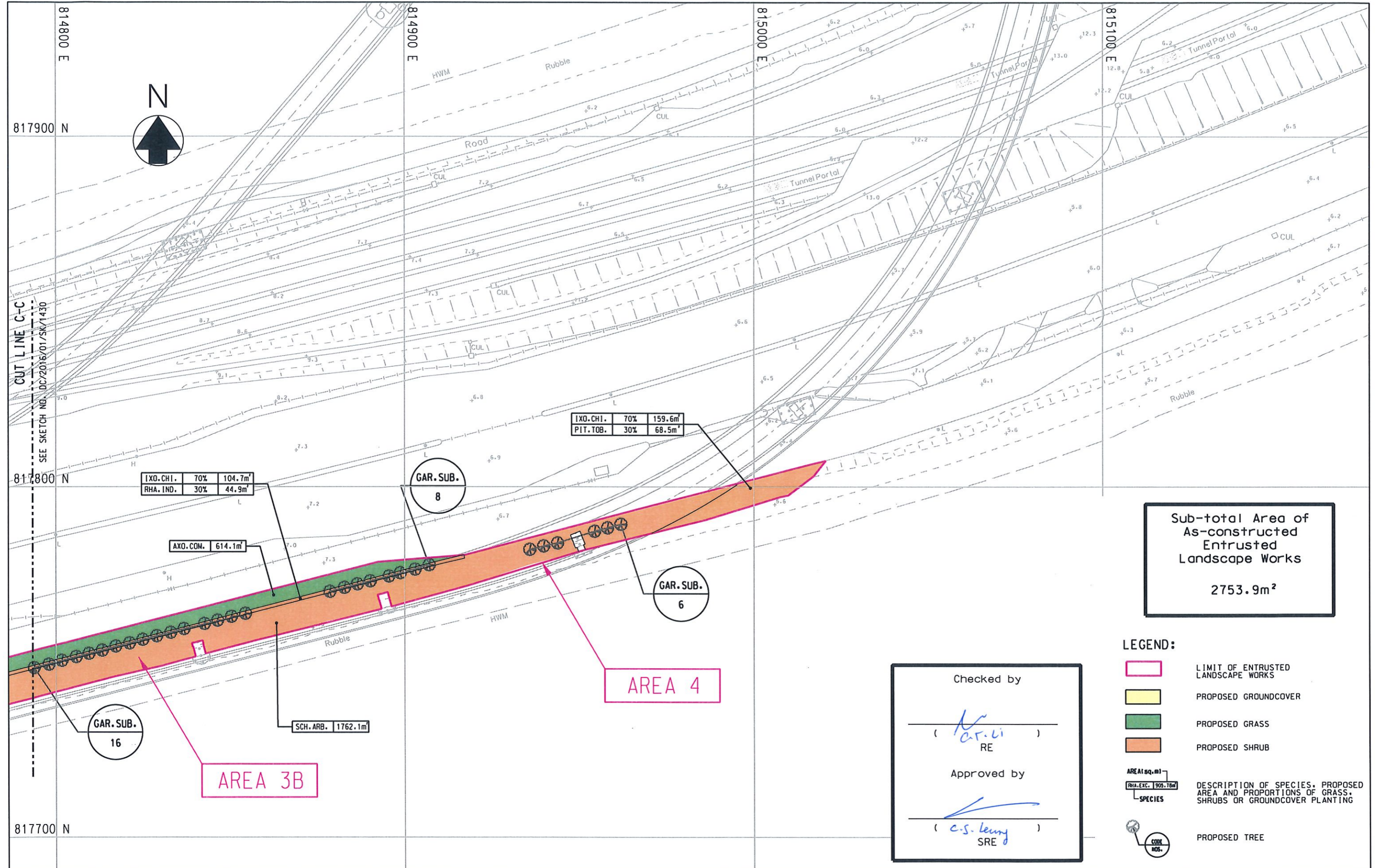
**binnies**  
 BINNIES HONG KONG LIMITED  
 賓尼士工程顧問有限公司

|             |       |            |                    |
|-------------|-------|------------|--------------------|
| Drawn by    | C T L | Date       | 19/04/2022         |
| Checked by  | B P S | Scale      | A3 1 : 1000        |
| Approved by | C L   | Sketch no. | DC/2016/01/SK/1430 |
|             |       | Revision   | B                  |

Plot Date = 09/06/2022



Figure 2.2



**Project** CONTRACT NO. DC/2016/01  
CONSTRUCTION OF AN ADDITIONAL SEWAGE RISING MAIN BETWEEN TUNG CHUNG AND SIU HO WAN AND ASSOCIATED WORKS  
建造東涌至小蠔灣額外污水泵喉及附屬工程

**Title** LAYOUT PLAN OF ENTRUSTED LANDSCAPE WORKS FROM HY/2012/07 TO DC/2016/01 (SHEET 4 OF 7)

香港特別行政區政府渠務署  
THE GOVERNMENT OF THE HONG KONG SPECIAL ADMINISTRATIVE REGION  
DRAINAGE SERVICES DEPARTMENT

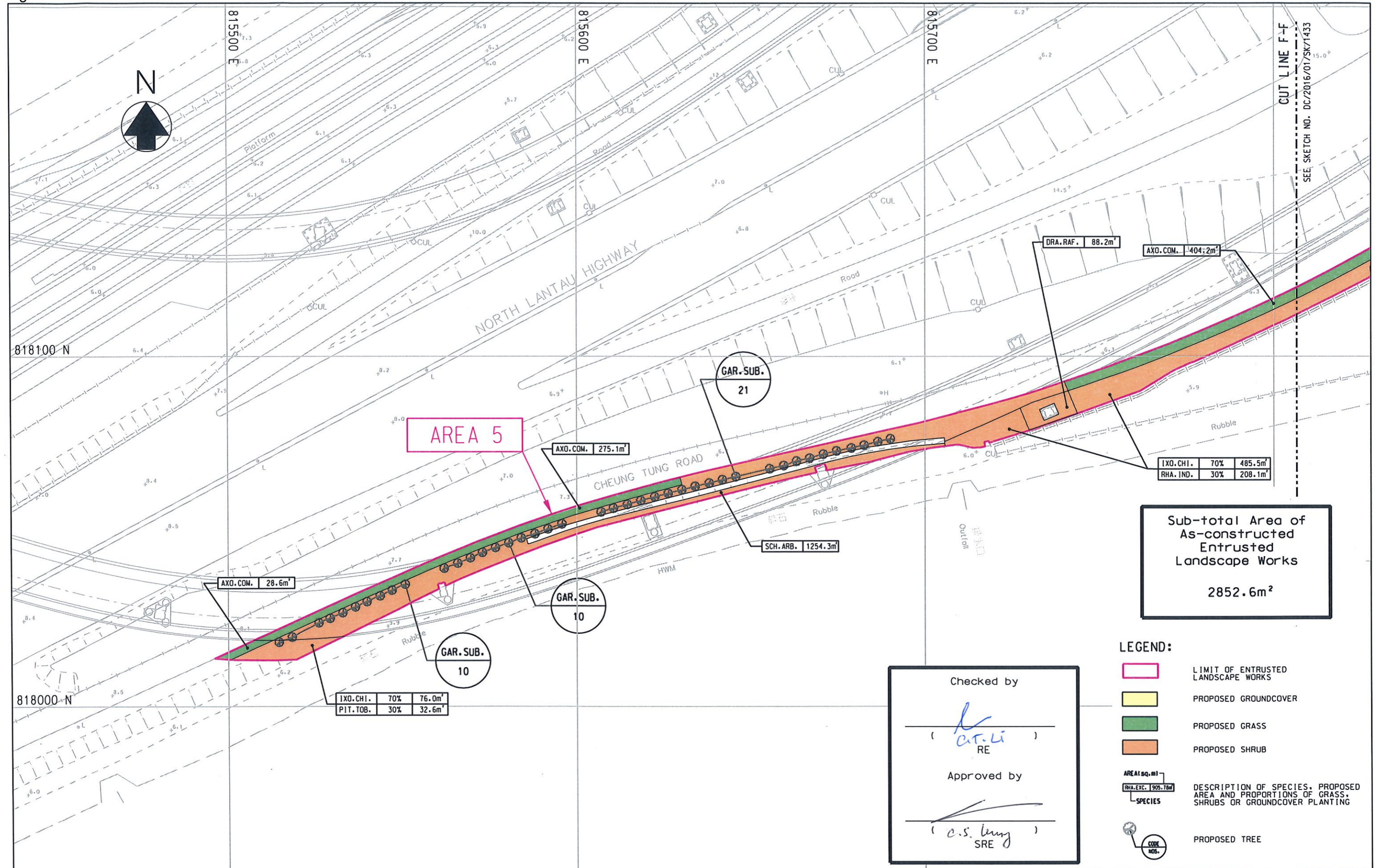
**binnies**  
BINNIES HONG KONG LIMITED  
賓尼斯工程顧問有限公司

|             |       |            |                    |
|-------------|-------|------------|--------------------|
| Drawn by    | C T L | Date       | 19/04/2022         |
| Checked by  | B P S | Scale      | A3 1 : 1000        |
| Approved by | C L   | Sketch no. | DC/2016/01/SK/1431 |
|             |       | Revision   | B                  |

Plot Date = 4/19/2022



Figure 2.2



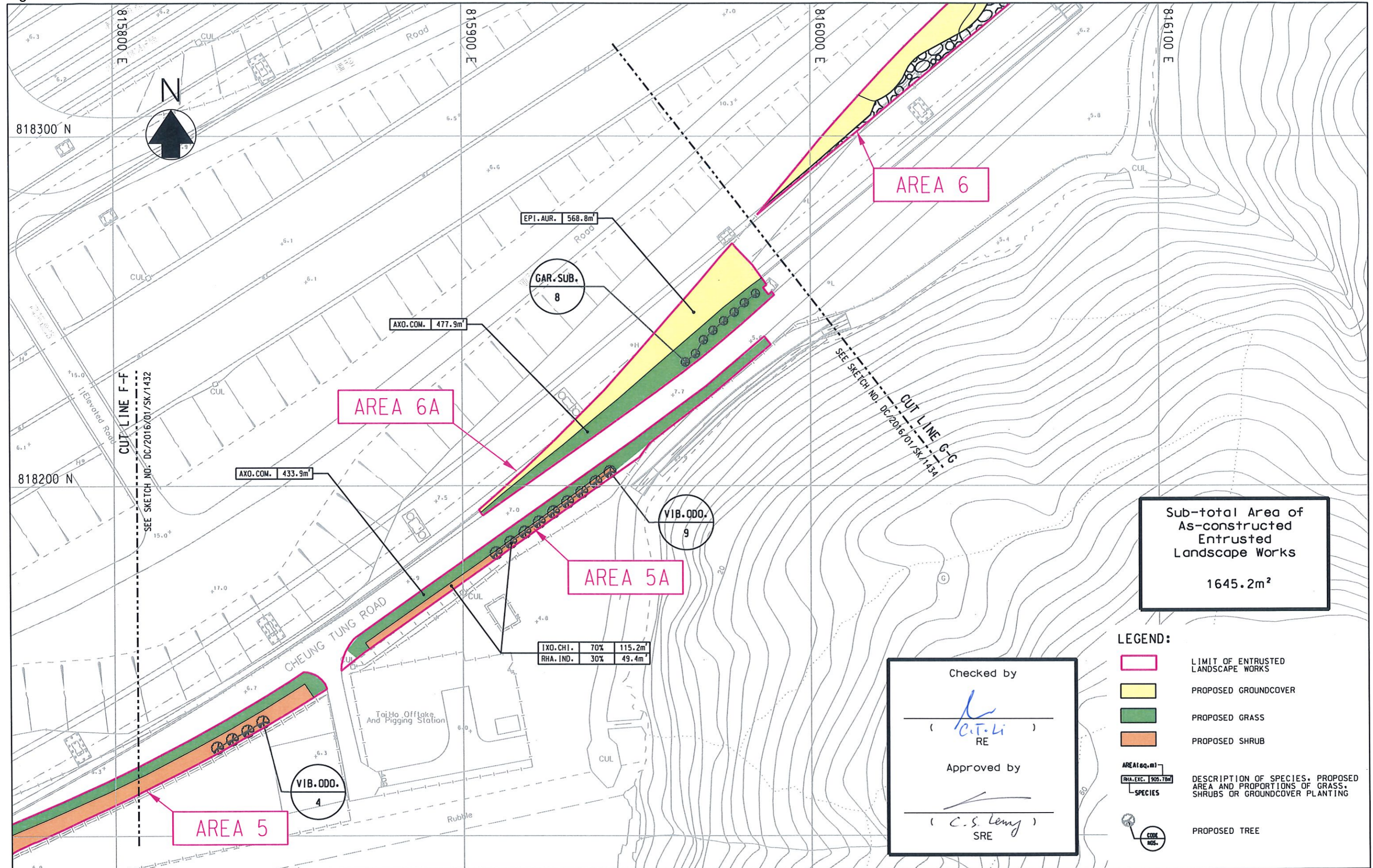
|  |   |                     |                                  |
|--|---|---------------------|----------------------------------|
| Project<br>CONTRACT NO. DC/2016/01<br>CONSTRUCTION OF AN ADDITIONAL SEWAGE RISING MAIN BETWEEN TUNG CHUNG AND SIU HO WAN AND ASSOCIATED WORKS<br>建造東涌至小蠔灣額外污水泵喉及附屬工程 | 香港特別行政區政府渠務署<br>THE GOVERNMENT OF THE HONG KONG SPECIAL ADMINISTRATIVE REGION<br>DRAINAGE SERVICES DEPARTMENT | Drawn by<br>C T L   | Date<br>19/04/2022               |
|  |   | Checked by<br>B P S | Scale<br>A3 1 : 1000             |
| Title<br>LAYOUT PLAN OF ENTRUSTED LANDSCAPE WORKS FROM HY/2012/07 TO DC/2016/01 (SHEET 5 OF 7)   | BINNIES HONG KONG LIMITED<br>賓尼斯工程顧問有限公司  | Approved by<br>C L  | Sketch no.<br>DC/2016/01/SK/1432 |
|  |   |                     | Revision<br>B                    |

Plot Date = 23/05/2022

CAD Filename = Q:\Technical\TO\Site Sketch\SK1432B.dgn



Figure 2.2



Sub-total Area of As-constructed Entrusted Landscape Works  
1645.2m<sup>2</sup>

Checked by  
*( C.T. Li )*  
RE  
Approved by  
*( C.S. Leng )*  
SRE

- LEGEND:**
- LIMIT OF ENTRUSTED LANDSCAPE WORKS
  - PROPOSED GROUNDCOVER
  - PROPOSED GRASS
  - PROPOSED SHRUB
  - AREA (sq.m)  
RHA. EXC. 905.76m<sup>2</sup>  
SPECIES DESCRIPTION OF SPECIES, PROPOSED AREA AND PROPORTIONS OF GRASS, SHRUBS OR GROUNDCOVER PLANTING
  - CUL  
IND. PROPOSED TREE

Project CONTRACT NO. DC/2016/01  
CONSTRUCTION OF AN ADDITIONAL SEWAGE RISING MAIN BETWEEN TUNG CHUNG AND SIU HO WAN AND ASSOCIATED WORKS  
建造東涌至小蠔灣額外污水泵喉及附屬工程

Title LAYOUT PLAN OF ENTRUSTED LANDSCAPE WORKS FROM HY/2012/07 TO DC/2016/01 (SHEET 6 OF 7)

Checked by  
*( C.T. Li )*  
RE  
Approved by  
*( C.S. Leng )*  
SRE

香港特別行政區政府渠務署  
THE GOVERNMENT OF THE HONG KONG SPECIAL ADMINISTRATIVE REGION  
DRAINAGE SERVICES DEPARTMENT

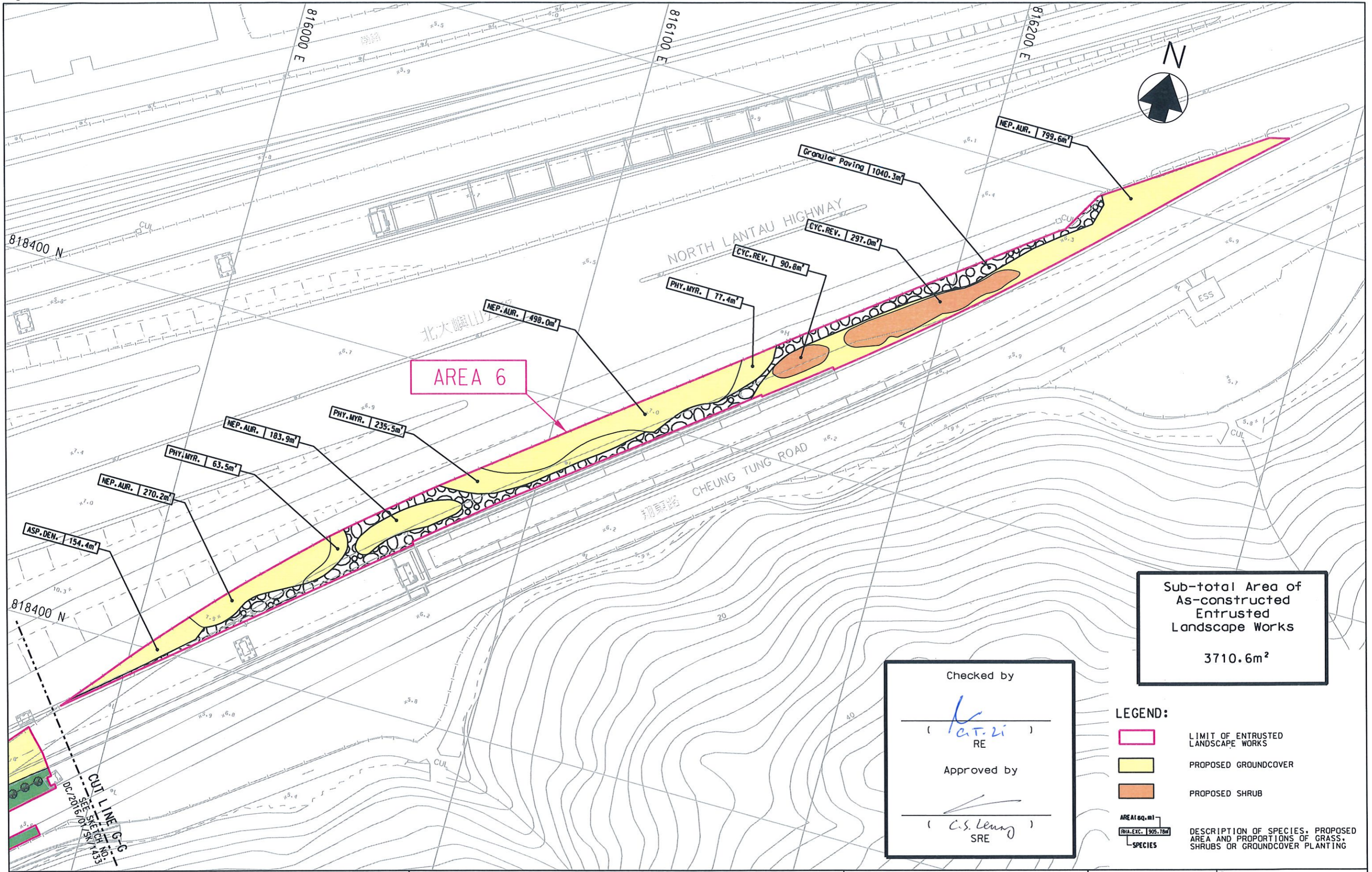
**binnies**  
BINNIES HONG KONG LIMITED  
賓尼斯工程顧問有限公司

|             |       |            |                    |
|-------------|-------|------------|--------------------|
| Drawn by    | C T L | Date       | 19/04/2022         |
| Checked by  | B P S | Scale      | A3 1 : 1000        |
| Approved by | C L   | Sketch no. | DC/2016/01/SK/1433 |
|             |       | Revision   | B                  |

Plot Date = 4/19/2022



Figure 2.2



|  |   |   |                     |                                  |
|--|---|---|---------------------|----------------------------------|
| Project<br>CONTRACT NO. DC/2016/01<br>CONSTRUCTION OF AN ADDITIONAL SEWAGE RISING MAIN BETWEEN TUNG CHUNG AND SIU HO WAN AND ASSOCIATED WORKS<br>建造東涌至小蠔灣額外污水泵喉及附屬工程 | 香港特別行政區政府渠務署<br>THE GOVERNMENT OF THE HONG KONG SPECIAL ADMINISTRATIVE REGION<br>DRAINAGE SERVICES DEPARTMENT |   | Drawn by<br>C T L   | Date<br>19/04/2022               |
|  | Title<br>LAYOUT PLAN OF ENTRUSTED LANDSCAPE WORKS FROM HY/2012/07 TO DC/2016/01 (SHEET 7 OF 7)                |   | Checked by<br>B P S |                                  |
|  |   | Approved by<br>C L                                  |                     | Sketch no.<br>DC/2016/01/SK/1434 |
|  |   | Binnies<br>BINNIES HONG KONG LIMITED<br>賓尼士工程顧問有限公司 |                     | Revision<br>B                    |

Plot Date = 4/19/2022





## ***Figure 2.3***

# ***Planting Schedule of Entrusted Landscape Works from HY/2012/07 to DC/2016/01***

Figure 2.3

| PLANTING SCHEDULE      |  |              |   |              |                    |       |                            |   |
|------------------------|--|--------------|---|--------------|--------------------|-------|----------------------------|---|
| CODE                   | BOTANICAL NAME                             | CHINESE NAME | SIZE (mm)<br>HEIGHT (H) x SPREAD (S)        | SPACING (mm) | NO./m <sup>2</sup> | %MIX. | QUANTITY<br>(APPROX. NOS.) | REMARK  |
| TREE PLANTING          |  |              |   |              |                    |       |                            |   |
| GAR.SUB.               | <i>Garcinia subelliptica</i>               | 非洲福木         | Light Standard                              | 4000-5000    | -                  | -     | 79                         |   |
| BAU.BLA                | <i>Bauhinia x blakeana</i>                 | 洋紫荊          | Heavy Standard                              | 5000         | -                  | -     | 5                          | 4 NOS. TRANSPLANTED TREE NOS. NL0483, NL0489, NL0490 AND NL0498 |
| PEL.TON.               | <i>Peltophorum tonkinense</i>              | 銀珠           | Heavy Standard                              | 5000         | -                  | -     | 1                          | 1 NO. TRANSPLANTED TREE NO. A149                                |
| VIB.ODO.               | <i>Viburnum odoratissimum</i>              | 珊瑚樹          | Heavy Standard                              | 5000         | -                  | -     | 76                         |   |
| XAN.CHR.               | <i>Xanthostemon chrysanthus</i>            | 金蒲桃          | Heavy Standard                              | 5000         | -                  | -     | 2                          |   |
| PALM PLANTING - EXOTIC |  |              |   |              |                    |       |                            |   |
| ARE.CAT                | <i>Areca catechu</i>                       | 檳榔           | 4000(H)                                     | 4000         | -                  | -     | 28                         |   |
| SHRUB PLANTING         |  |              |   |              |                    |       |                            |   |
| IXO.CHI.               | <i>Ixora chinensis</i>                     | 龍船花          | 300(H) x 300(S)                             | 300          | 12.54              | -     | 24331                      |   |
| DRA.REF.               | <i>Dracaena reflexa</i>                    | 金黃百合竹        | 600(H)                                      | 500          | 4.62               | -     | 407                        |   |
| SCH.ARB.               | <i>Schefflera arboricola</i>               | 八葉           | 300(H) x 300(S)                             | 300          | 12.54              | -     | 41647                      |   |
| COD.VAR.'AUC'          | <i>Codiaeum variegatum 'aucubaefolium'</i> | 灑金榕          | 300(H) x 300(S)                             | 300          | 12.54              | -     | 1358                       |   |
| COD.VAR.'RED'          | <i>Codiaeum variegatum 'red'</i>           | 灑金榕 (紅色)     | 300(H) x 300(S)                             | 300          | 12.54              | -     | 193                        |   |
| PIT.TOB.               | <i>Pittosporum tobira</i>                  | 海桐花          | 300(H) x 300(S)                             | 300          | 12.54              | -     | 1268                       |   |
| RHA.IND.               | <i>Rhapholepis indica</i>                  | 車輪梅          | 300(H) x 300(S)                             | 300          | 12.54              | -     | 7771                       |   |
| CYC.REV.               | <i>Cycas revoluta</i>                      | 蘇鐵           | 400(H) x 500 (S)                            | 500          | 4.6                | -     | 1784                       |   |
| GROUNDCOVER PLANTING   |  |              |   |              |                    |       |                            |   |
| ASP.DEN.               | <i>Asparagus densiflorus</i>               | 非洲天門冬        | 200(H) x 300 (S)                            | 200          | 29                 | -     | 4478                       |   |
| NEP.AUR.               | <i>Nephrolepis auriculata</i>              | 腎蕨           | 250(H) x 250 (S)                            | 150          | 51.59              | -     | 90370                      |   |
| EPI.AUR.               | <i>Epipremnum aureum</i>                   | 綠蘿           | 200(H) x 300(S)                             | 300          | 12.54              | -     | 7133                       |   |
| PHY.MYR.               | <i>Phyllanthus myrtifolius</i>             | 錫蘭葉下珠        | 300(H) x 300(S)                             | 300          | 12.54              | -     | 16414                      |   |
| GRASS PLANTING         |  |              |   |              |                    |       |                            |   |
| AXO.COM.               | <i>Axonopus compressus</i>                 | 地毯草 (大葉草)    | WHOLE PIECE TURF<br>300(L) x 300(W) x 50(H) | -            | -                  | -     | 3423 m <sup>2</sup>        | 25mm HIGH SWORD AND 25mm SOIL BASE OF TURF                      |
| GRANULAR PAVING        |  |              |   |              |                    |       |                            |   |
| -                      | -  | -            | -   | -            | -                  | -     | 1040 m <sup>2</sup>        |   |

## NOTES:

1. THIS DRAWING SHOULD BE READ IN CONJUNCTION WITH DRAWING NOS. DC/2016/01/SK/1428 TO DC/2016/01/SK/1434.
2. SHRUB / GROUNDCOVER SHOULD BE PLANTED IN STAGGERED PATTERN.

|         |   |  |   |            |            |                    |
|---------|---|--|---|------------|------------|--------------------|
| Project | CONTRACT NO. DC/2016/01<br>CONSTRUCTION OF AN ADDITIONAL SEWAGE RISING MAIN BETWEEN TUNG CHUNG AND SIU HO WAN AND ASSOCIATED WORKS<br>建造東涌至小蠔灣額外污水泵喉及附屬工程 | <br>香港特別行政區政府渠務署<br>THE GOVERNMENT OF THE HONG KONG SPECIAL ADMINISTRATIVE REGION<br>DRAINAGE SERVICES DEPARTMENT | Drawn by  | C T L      | Date       | 20/04/2022         |
|         | Title   |  | SCHEDULE OF ENTRUSTED LANDSCAPE WORKS FROM HY/2012/07 TO DC/2016/01 | Checked by | B P S      | Scale              |
|         |   | <br>BINNIES HONG KONG LIMITED<br>賓尼斯工程顧問有限公司  | Approved by   | C L        | Sketch no. | DC/2016/01/SK/1435 |
|         |   |  | Revision  |            |            |                    |



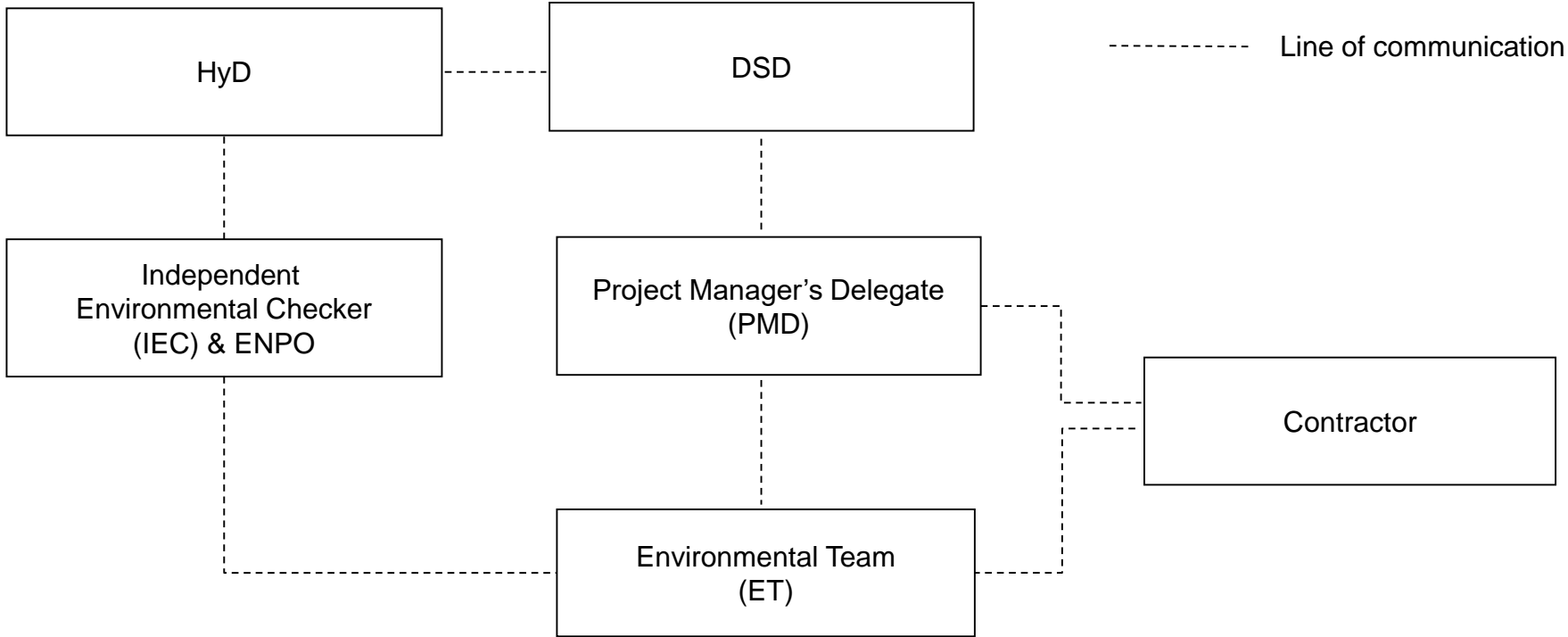
## ***Figure 2.4***

# ***Project Organization Chart***



Figure 2.4

# Organization Chart of Environmental Team for Contract DC/2016/01



| EIA Ref. | EM&A Manual Ref. | Environmental Protection Measures   | Location/ Timing             | Implementation Agent | Relevant Standard or Requirement | Implementation Stages |   |   | Maintenance Agency |
|----------|------------------|---|------------------------------|----------------------|----------------------------------|-----------------------|---|---|--------------------|
|          |                  |   |                              |                      |                                  | D                     | C | O |                    |
| 10.9     | 7.6              | The large surface of the retaining wall along the toll plaza area shall adopt a patterned/ smoother finishes and texture design to break the large surface. Climber treatment is proposed to soften the structures (DM1)                    | All areas<br>Detailed design | Design Consultant    | TMEIA                            | ✓                     |   |   | N/A                |
| 10.9     | 7.6              | The colour and shape of the toll control buildings, ventilation building and administration building shall adopt a design which could blend it into the vicinity elements, and the details will be developed in detailed design stage (DM2) | All areas<br>Detailed design | Design Consultant    | TMEIA                            | ✓                     |   |   | N/A                |
| 10.9     | 7.6              | Round angle, patterned finishes, and oval shaped pier were considered in the viaduct design, and further details will be developed under ACABAS submission (DM3)  | All areas<br>Detailed design | Design Consultant    | TMEIA                            | ✓                     |   |   | N/A                |
| 10.9     | 7.6              | Details of the street furniture will be developed in the detailed design stage (DM4)  | All areas<br>Detailed design | Design Consultant    | TMEIA                            | ✓                     |   |   | N/A                |
| 10.9     | 7.6              | Aesthetic design of the viaduct, retaining wall and other structures will be developed under ACABAS submission (DM5)  | All areas<br>Detailed design | Design Consultant    | TMEIA                            | ✓                     |   |   | N/A                |

| EIA Ref. | EM&A Manual Ref. | Environmental Protection Measures   | Location/ Timing   | Implementation Agent             | Relevant Standard or Requirement | Implementation Stages |   |   | Maintenance Agency |
|----------|------------------|---|--|----------------------------------|----------------------------------|-----------------------|---|---|--------------------|
|          |                  |   |  |                                  |                                  | D                     | C | O |                    |
| 10.9     | 7.6              | Existing trees on boundary of the Project Area shall be carefully protected during construction. Detailed Tree Protection Specification shall be provided in the Contract Specification. Under this specification, the Contractor shall be required to submit, for approval, a detailed working method statement for the protection of trees prior to undertaking any works adjacent to all retained trees, including trees in contractor's works areas (Tree protection measures will be detailed at Tree Removal Application stage) (CM1) | All areas<br><br>Detailed design / during construction                   | Design Consultant/<br>Contractor | TMEIA                            | ✓                     | ✓ |   | N/A                |
| 10.9     | 7.6              | Trees unavoidably affected by the works shall be transplanted where practical. Trees will be transplanted straight to their final receptor site and not held in a temporary nursery. A detailed Tree Transplanting Specification shall be provided in the Contract Specification. Sufficient time for necessary tree root and crown preparation periods shall be allowed in the project programme (CM2)   | All areas<br><br>Detailed design / during construction                   | Design Consultant/<br>Contractor | TMEIA                            | ✓                     | ✓ |   | N/A                |
| 10.9     | 7.6              | Hillside and roadside screen planting to proposed roads, associated structures and slope works (CM3)  | All areas<br><br>Detailed design / during construction/post construction | Design Consultant/<br>Contractor | TMEIA                            | ✓                     | ✓ |   | N/A                |

| EIA Ref. | EM&A Manual Ref. | Environmental Protection Measures   | Location/ Timing   | Implementation Agent          | Relevant Standard or Requirement | Implementation Stages |   |   | Maintenance Agency |
|----------|------------------|---|--|-------------------------------|----------------------------------|-----------------------|---|---|--------------------|
|          |                  |   |  |                               |                                  | D                     | C | O |                    |
| 10.9     | 7.6              | Hydroseeding or sheeting of soil stockpiles with visually unobtrusive material (in earth tone) (CM4)                  | All areas<br>Detailed design / during construction/post construction | Design Consultant/ Contractor | TMEIA                            | ✓                     | ✓ |   | N/A                |
| 10.9     | 7.6              | Screening of construction works by hoardings around works area in visually unobtrusive colours, to screen works (CM5) | All areas<br>Detailed design / during construction/post construction | Design Consultant/ Contractor | TMEIA                            | ✓                     | ✓ |   | N/A                |
| 10.9     | 7.6              | Control night-time lighting and glare by hooding all lights (CM6)   | All areas<br>Detailed design / during construction                   | Design Consultant/ Contractor | TMEIA                            | ✓                     | ✓ |   | N/A                |
| 10.9     | 7.6              | Ensure no run-off into water body adjacent to the Project Area (CM7)  | All areas<br>Detailed design / during construction                   | Design Consultant/ Contractor | TMEIA                            | ✓                     | ✓ |   | N/A                |
| 10.9     | 7.6              | Avoidance of excessive height and bulk of buildings and structures (CM8)  | All areas<br>Detailed design / during construction                   | Design Consultant/ Contractor | TMEIA                            | ✓                     | ✓ |   | N/A                |
| 10.9     | 7.6              | Recycle/Reuse all felled trees and vegetation, e.g. mulching (CM9)  | All areas<br>Detailed design / during construction                   | Design Consultant/ Contractor | TMEIA                            | ✓                     | ✓ |   | N/A                |

| EIA Ref. | EM&A Manual Ref. | Environmental Protection Measures   | Location/ Timing  | Implementation Agent          | Relevant Standard or Requirement | Implementation Stages |   |   | Maintenance Agency |
|----------|------------------|---|---|-------------------------------|----------------------------------|-----------------------|---|---|--------------------|
|          |                  |   |   |                               |                                  | D                     | C | O |                    |
| 10.9     | 7.6              | Compensatory tree planting shall be provided to the satisfaction of relevant Government departments. Required numbers and locations of compensatory trees shall be determined and agreed separately with Government during the Tree Felling Application process under ETWBTC 3/2006 (CM10)                | All areas<br>Detailed design / during construction                    | Design Consultant/ Contractor | TMEIA                            | ✓                     | ✓ |   | N/A                |
| 10.9     | 7.6              | Re-vegetation of affected woodland/shrubland with native species (OM1)  | All areas<br>Detailed design / during construction / during operation | Design Consultant/ Contractor | TMEIA                            | ✓                     | ✓ | ✓ | AFCD/ HyD/ LCSD    |
| 10.9     | 7.6              | Tall buffer screen tree / shrub / climber planting should be incorporated to soften hard engineering structures and facilities (OM2)  | All areas<br>Detailed design / during construction / during operation | Design Consultant/ Contractor | TMEIA                            | ✓                     | ✓ | ✓ | HyD/ LCSD          |
| 10.9     | 7.6              | Streetscape elements (e.g. paving, signage, street furniture, lighting etc.) shall be sensitively designed in a manner that responds to the local context, and minimises potential negative landscape and visual impacts. Lighting units should be directional and minimise unnecessary light spill (OM3) | All areas<br>Detailed design / during construction / during operation | Design Consultant/ Contractor | TMEIA                            | ✓                     | ✓ | ✓ | HyD/ LCSD          |
| 10.9     | 7.6              | Structure, ornamental tree / shrub / climber planting should be provided along roadside amenity strips, central dividers and newly formed slopes to enhance the townscape quality and further greenery enhancement (OM4)  | All areas<br>Detailed design / during construction / during operation | Design Consultant/ Contractor | TMEIA                            | ✓                     | ✓ | ✓ | HyD/ LCSD          |

| EIA Ref. | EM&A Manual Ref. | Environmental Protection Measures   | Location/ Timing  | Implementation Agent             | Relevant Standard or Requirement | Implementation Stages |   |   | Maintenance Agency |
|----------|------------------|---|---|----------------------------------|----------------------------------|-----------------------|---|---|--------------------|
|          |                  |   |   |                                  |                                  | D                     | C | O |                    |
| 10.9     | 7.6              | Aesthetically pleasing design (visually unobtrusive and non-reflective) as regard to the form, material and furnishes shall be incorporated to all buildings, engineering structures and associated infrastructure facilities (OM5) | All areas<br><br>Detailed design / during construction / during operation | Design Consultant/<br>Contractor | TMEIA                            | ✓                     | ✓ | ✓ | HyD                |
| 10.9     | 7.6              | Avoidance of excessive height and bulk of buildings and structures (OM6)  | All areas<br><br>Detailed design / during construction / during operation | Design Consultant/<br>Contractor | TMEIA                            | ✓                     | ✓ | ✓ | N/A                |

## Abbreviations:

D: Design; C: Construction; and O: Operation.

AFCD: Agriculture, Fisheries and Conservation Department; HyD: Highways Department; and LCSD: Leisure, Cultural and Services Department.

TMEIA: Technical Memorandum on Environmental Impact Assessment Process.

N/A: Not applicable.

## Note:

Funding Agent for all mitigation measures will be the Highways Department of the Hong Kong SAR Government.



## ***Appendix 5.1***

# ***Landscape Establishment Monitoring Checklist (Nil for this reporting period)***

---



## ***Appendix 6.2***

### ***Complaint Log***



**COMPLAINT LOG**

**Ref:** \_\_\_\_\_

| <b>Log Ref.</b> | <b>Date / Location</b> | <b>Complainant/<br/>Date of Contract</b> | <b>Details of Complaint</b> | <b>Investigation / Mitigation Action</b> | <b>File Closed</b> |
|-----------------|------------------------|--|-----------------------------|--|--------------------|
|                 |                        |  |                             |  |                    |
|                 |                        |  |                             |  |                    |
|                 |                        |  |                             |  |                    |
|                 |                        |  |                             |  |                    |
|                 |                        |  |                             |  |                    |
|                 |                        |  |                             |  |                    |
|                 |                        |  |                             |  |                    |
|                 |                        |  |                             |  |                    |
|                 |                        |  |                             |  |                    |

Filed by Environmental Team Leader \_\_\_\_\_

Date: \_\_\_\_\_