



AUES JOB NO.: TCS01137/20

TUEN MUN - CHEK LAP KOK LINK  
CONTRACT NO. HMWSD 2/2020 (HY) –  
ESTABLISHMENT OF LANDSCAPE SOFTWORKS FOR  
THE TUEN MUN - CHEK LAP KOK LINK

7<sup>TH</sup> MONTHLY ENVIRONMENTAL MONITORING AND  
AUDIT (EM&A) REPORT – OCTOBER 2021

PREPARED FOR  
HONG KONG LANDSCAPING CO., LTD.

Date	Reference No.	Prepared By	Certified By
27 May 2022	TCS01137/20/600/R0012v2	 Martin Li (Environmental Consultant)	 Ben Tam (Environmental Team Leader)

Version	Date	Remarks
1	22 November 2021	First Submission
2	27 May 2022	Amended according to the IEC's comment on 27 May 2022



By Fax (2293 6300) and By Post

AECOM Asia Co. Ltd.  
Supervising Officer Representative's Office  
No. 8 Mong Fat Street, Tuen Mun,  
New Territories, Hong Kong

Attention: Mr. K P Wong

Dear Sir,

**Re: Agreement No. CE 48/2011 (EP)  
Environmental Project Office for the  
HZMB Hong Kong Link Road, HZMB Hong Kong Boundary Crossing Facilities, and  
Tuen Mun-Chek Lap Kok Link – Investigation**

**Contract No. HMWSD 2/2020 (HY)  
Establishment of Landscape Softworks for the Tuen Mun – Chek Lap Kok Link  
Environmental Permit No.: EP-354/2009/D  
7<sup>th</sup> Monthly EM&A Report for October 2021 (EP-354/2009/D)**

Reference is made to the Environmental Team's submission of the Monthly EM&A Report for October 2021 (ET's ref.: "TCS01137/20/600/R0012v2" dated 27 May 2022) certified by ET Leader and provided to us via e-mail on 27 May 2022.

Please be informed that we have no adverse comments on the captioned submission. We write to verify the captioned submission in accordance with Condition 4.4 of EP-354/2009/D.

Thank you very much for your attention and please feel free to contact the undersigned or the ENPO Leader, Mr. Y H Hui, should you require further information.

Yours faithfully,  
For and on behalf of  
Ramboll Hong Kong Limited



Adi Lee  
Independent Environmental Checker  
Tuen Mun – Chek Lap Kok Link

c.c.

HyD	Attn.: Mr. Eric Wong	(By Fax: 3188 6614)
HyD	Attn.: Mr. Minian Wan	(By Fax: 3188 6614)
AUES	Attn.: Mr. Ben Tam	(By Fax: 2959 6079)
HKL	Attn.: Mr. S C Wong	(By Fax: 2385 7911)

### EXECUTIVE SUMMARY

ES01 This is the 7<sup>th</sup> Monthly EM&A Report presenting the monitoring results and inspection findings under the Contract HMWSD 2/2020 (HY) for the period from 1 to 31 October 2021 (hereinafter 'the Reporting Period').

### SUMMARY OF EM&A ACTIVITIES FOR THE REPORTING PERIOD

ES02 The EM&A activities conducted in the Reporting Period under this Contract are summary in below:-

- Landscape & Visual Monitoring (Establishment period) – **0 events**

ES03 The Establishment Period monitoring once per three months for planting works was commenced on 1 June 2020 for the planting area under the contract HY/2012/07 & HY/2013/12 and commenced on 1 February 2021 for the planting area under the contract HY/2017/10 according to the EM&A manual requirement. No establishment period inspection was conducted by this Contract or other TMCLK's Contract during this reporting period.

### ENVIRONMENTAL COMPLAINT

ES04 In the Reporting Period, no environmental complaint was received.

ES05 The statistical summary of environmental complaints is summarized in the following table.

Reporting Period	Environmental Complaint Statistics	
	Frequency	Cumulative
Since the Contract commencement	0	0
October 2021	0	0

### NOTIFICATION OF SUMMONS AND SUCCESSFUL PROSECUTIONS

ES06 No environmental summons or successful prosecutions were recorded in the Reporting Period.

### REPORTING CHANGE

ES07 No reporting changes were made in the Reporting Period.

### FUTURE KEY ISSUES

ES08 The Project TM-CLKL had been commissioning at the end of 2020 and the major construction works under the Project had been completed at the end of March 2021. According to the Project EM&A Manual requirement, operational phase EM&A works will be undertaken for a period of two years after the commission of the project

ES09 According to the Project EM&A Manual requirement, monitoring for the planting works at a frequency of 3 months interval during the 24-month establishment period is required to make sure the establishment planting works is complied with EMIS requirement, and during the 12-month establishment period, the maintenance operations must be supervised by fully qualified Landscape Resident Site Staff (Registered Landscape Architect or Professional Member of the Hong Kong Institute of Landscape Architects). Subsequent to the 12-month establishment period supervised by the qualified Landscape Resident Site Staff, the supervision from the 13<sup>th</sup> to the 24<sup>th</sup> month would be continued by other members of the Project.

ES10 According to the contract arrangement, the establishment planting area under the Contract HY/2012/07 Zone 1, 3 & 4 and the Contract HY/2013/12 were handover to this contract from December 2020 and June 2021 separately. For the establishment planting area under the Contract HY/2012/07 Zone 2, it was handed over to the ET of Contact HY/2017/10. Therefore, the establishment planting inspection and maintenance works for the establishment planting area under the Contract HY/2012/07 Zone 1, 3 & 4 and the Contract HY/2013/12 responded from this Contract was commenced from December 2020 and June 2021.

**TABLE OF CONTENTS**

<b>1</b>	<b>INTRODUCTION</b>	<b>1</b>
1.1	PROJECT BACKGROUND	1
1.2	REPORT STRUCTURE	1
1.3	CONTRACT ORGANIZATION	1
<b>2</b>	<b>SUMMARY OF MONITORING REQUIREMENTS UNDER THE CONTRACT</b>	<b>2</b>
2.1	GENERAL	2
2.2	ENVIRONMENTAL ASPECTS	2
2.3	MONITORING SCHEDULE	4
<b>3</b>	<b>LANDSCAPE AND VISUAL</b>	<b>5</b>
3.1	GENERAL	5
<b>4</b>	<b>ENVIRONMENTAL COMPLAINT AND NON-COMPLIANCE</b>	<b>6</b>
4.1	ENVIRONMENTAL COMPLAINT, SUMMONS AND PROSECUTION	6
<b>5</b>	<b>CONCLUSIONS AND RECOMMENDATIONS</b>	<b>7</b>
5.1	CONCLUSIONS	7

**LIST OF TABLES**

TABLE 2-1	SUMMARY OF ESTABLISHMENT INSPECTION FOR THE PROJECT
TABLE 3-1	DETAILS OF ESTABLISHMENT INSPECTION FOR THE PROJECT DURING THE REPORTING PERIOD
TABLE 4-1	STATISTICAL SUMMARY OF ENVIRONMENTAL COMPLAINTS
TABLE 4-2	STATISTICAL SUMMARY OF ENVIRONMENTAL SUMMONS
TABLE 4-3	STATISTICAL SUMMARY OF ENVIRONMENTAL PROSECUTION

**LIST OF APPENDICES**

APPENDIX A	PROJECT LAYOUT PLAN
APPENDIX B	LAYOUT PLAN OF THE CONTRACT
APPENDIX C	ORGANIZATION OF THE CONTRACT
APPENDIX D	EVENT AND ACTION PLAN
APPENDIX E	MONITORING SCHEDULE
APPENDIX F	CHECKLIST FOR ESTABLISHMENT WORKS MONITORING
APPENDIX G	ENVIRONMENTAL MITIGATION AND ENHANCEMENT MEASURES IMPLEMENTATION SCHEDULE (EMIS)
APPENDIX H	CUMULATIVE STATISTICS ON EXCEEDANCE AND COMPLAINT

## 1 INTRODUCTION

### 1.1 PROJECT BACKGROUND

- 1.1.1 According to the findings of the Northwest New Territories (NWNT) Traffic and Infrastructure Review conducted by the Transport Department, Tuen Mun Road, Ting Kau Bridge, Lantau Link and North Lantau Highway would be operating beyond capacity after 2016. This forecast has been based on the estimated increase in cross boundary traffic, developments in the Northwest New Territories (NWNT), and possible developments in North Lantau, including the Airport developments, the Lantau Logistics Park (LLP) and the Hong Kong – Zhuhai – Macao Bridge (HZMB). In order to cope with the anticipated traffic demand, two new road sections between NWNT and North Lantau – Tuen Mun – Chek Lap Kok Link (TM-CLKL) and Tuen Mun Western Bypass (TMWB) are proposed.
- 1.1.2 Hong Kong Landscaping Co., Ltd. (hereafter “HKL”) is commissioned by the Highways Department (HyD) as the Main Contractor of the Contract No. HMWSD 2/2020 (HY) – Establishment of Landscape Softworks for the Tuen Mun - Chek Lap Kok Link ((hereafter “the Contract”) and this Contract is part of the Tuen Mun – Chek Lap Kok Link (TM-CLK Link Project). TM-CLK Link Project is a Designated Project under Environmental Permit number EP-354/2009/D issued on 13 March 2015. The layout Plan of the Project and the Contract are showed in [Appendix A and B](#) respectively.
- 1.1.3 The construction works of the Contract mainly include:-
- a. Maintenance the approx. 33ha planting area of the Project during the establishment period.
- 1.1.4 The TM-CLKL had been commissioning at the end of 2020 and the major construction works under the Project had been completed at the end of March 2021. According to the Project EM&A Manual requirement, operational phase EM&A works will be undertaken for a period of two years after the commission of the project.
- 1.1.5 This is 7<sup>th</sup> monthly EM&A report under the Contract HMWSD 2/2020 (HY) presenting the monitoring results and inspection findings for period from **1 to 31 October 2021**.

### 1.2 REPORT STRUCTURE

- 1.2.1 The Monthly Environmental Monitoring and Audit (EM&A) Report is structured into the following sections:-
- Section 1 Introduction*
  - Section 2 Summary of Monitoring Requirements under the Contract*
  - Section 3 Landscape and Visual*
  - Section 4 Environmental Complaints and Non-Compliance*
  - Section 5 Conclusions and Recommendations*

### 1.3 CONTRACT ORGANIZATION

- 1.3.1 The Contract organization and contact details of key personnel are shown in [Appendix C](#).

## 2 SUMMARY OF MONITORING REQUIREMENTS UNDER THE CONTRACT

### 2.1 GENERAL

2.1.1 In accordance with the Project EM&A Manual requirements, the environmental aspects under the Project shall be included air quality, ecological, cultural heritage, landscape and visual, landfill gas and site inspection.

2.1.2 A summary of EM&A requirements under the contract are presented in the sub-sections below. Should non-compliance of the environmental quality criteria occurs, remedial actions will be triggered according to the Event and Action Plan which presented in [Appendix D](#).

### 2.2 ENVIRONMENTAL ASPECTS

#### Air

2.2.1 According to the Contract nature is maintenance the planting area of the Project during the establishment period in the operational phase. No specific EM&A requirement for air quality related to the establishment of landscape softworks was identify.

2.2.2 The scopes of works under this Contract do not involve any of works listed under Section 4.4.1.1 of the approved EIA Report. Vehicles travel under this contract was carried out in paved area. Therefore, fugitive dust emission from the contract would be limited and no unacceptable air quality impact would be expected. No specific mitigation measure and monitoring would be required.

#### Noise

2.2.3 According to the Contract nature is maintenance the planting area of the Project during the establishment period in the operational phase. No unacceptable noise impact would be expected from the contract. No mitigation measure would be required under the approved EIA Report. No specific EM&A requirement for noise impact related to the establishment of landscape softworks was identify.

2.2.4 Most of the works under this contract would be conducted manually, with limited use of PME for delivery material on site and watering the planting area along the road side. Therefore, no unacceptable noise impact would be expected. No specific mitigation measure and monitoring would be required.

#### Water Quality

2.2.5 According to the Contract nature is maintenance the planting area of the Project during the establishment period in the operational phase. No specific EM&A requirement for water quality related to the establishment of landscape softworks was identify.

2.2.6 All planting area under this contract area are land-based, no major discharge would be expected from the establishment planting maintenance works. Therefore, no direct or indirect impact on marine water quality would be expected. No specific mitigation measure and monitoring would be required.

#### Ecology

2.2.7 According to the Contract nature is maintenance the planting area of the Project during the establishment period in the operational phase. No specific EM&A requirement for ecology related to the establishment of landscape softworks was identify.

2.2.8 No site clearance and associated habitat loss would be required under this contract. Moreover, all planting area under this contract area are land-based, no direct or indirect impact on the marine ecology would be expected. Therefore, no specific mitigation measure and monitoring would be required.



**Landscape and Visual**

- 2.2.9 Monitoring of the planting works during the 24-month Establishment period after completion of the construction works should be carried out. Establishment Works Inspection should be carried out once every 3 months to make sure the establishment planting works is complied with EMIS requirement. For the planting area under the Contract HY/2012/07, the first 6-month establishment period inspection and maintenance will be taken by the original Contract's ET and the main Contractor under the contract. For another Contract HY/2013/12 and HY/2017/10, the first 12-month establishment period inspection and maintenance will be taken by the original Contract's ET and the main Contractor under the contract. After the first 6 month or year establishment period, the maintenance and inspection works will be handover to the contract HMWSD 2/2020 (HY) except the planting area under the Contract HY/2012/07 Zone 2. The summary of Establishment inspection for the Project is shown in [Table 2-1](#).

**Table 2-1 Summary of Establishment inspection for the Project**

Contract Area	Establishment Monitoring Commenced	Inspection taken under the contract HMWSD 2/2020 (HY)	Next Quarter of Establishment Monitoring
HY/2012/07 (Zone 1, 3 & 4)	June 2020	December 2020	September to November 2021 (6 <sup>th</sup> Quarter)
HY/2012/07 (Zone 2)	June 2020	TBA	September to November 2021 (6 <sup>th</sup> Quarter)
HY/2013/12	June 2020	June 2021	September to November 2021 (6 <sup>th</sup> Quarter)
HY/2017/10	February 2021	TBA	November 2021 to January 2022 (4 <sup>th</sup> Quarter)

**Cultural Heritage**

- 2.2.10 According to the Contract nature is maintenance the planting area of the Project during the establishment period in the operational phase. No specific EM&A requirement for cultural heritage related to the establishment of landscape softworks was identify.
- 2.2.11 No major structural or civil work would be conducted under this contract. Moreover, all planting area are set back from the cultural heritage zone Grave G1 more than 10m. Therefore, no cultural heritage impact would be expected under this contract. No mitigation measure and monitoring would be required.

**Landfill Gas**

- 2.2.12 According to the Contract nature is maintenance the planting area of the Project during the establishment period in the operational phase. No specific EM&A requirement for landfill gas related to the establishment of landscape softworks was identify.
- 2.2.13 No major excavation work would be conducted under this contract. Only minor hand digging works will be conducted while tree replacement works. Therefore, no landfill gas hazard would be expected under this contract. No mitigation measure and monitoring would be required.

**Waste Management**

- 2.2.14 According to the Contract nature is maintenance the planting area of the Project during the establishment period in the operational phase. No specific EM&A requirement for Waste Management related to the establishment of landscape softworks was identify.

2.2.15 All planting area under this contract area are land-based, no dredged sediment, excavated C&D material, C&D waste, chemical waste and sewage would be generated under this Contract. Only limited level of dead plant would be generated from works during maintenance of the planting area and would be easily controlled by standard waste management practice. No specific mitigation measure would be required.

**Inspection and Audit**

2.2.16 According to the Contract nature is maintenance the planting area of the Project during the establishment period in the operational phase. No construction works would be taken under this contract. Moreover, no potential environmental issue had been identified in the previous sections. No regular site inspections would be required.

**2.3 MONITORING SCHEDULE**

2.3.1 The monitoring schedule for landscape & visual for the present reporting period is presented in [Appendix E](#).

### 3 LANDSCAPE AND VISUAL

#### 3.1 GENERAL

- 3.1.1 According to the Project EM&A Manual requirement, monitoring for the planting works at a frequency of 3 months interval during the 24-month establishment period is required to make sure the establishment planting works is complied with EMIS requirement, and during the 12-month establishment period, the maintenance operations must be supervised by fully qualified Landscape Resident Site Staff (Registered Landscape Architect or Professional Member of the Hong Kong Institute of Landscape Architects). Subsequent to the 12-month establishment period supervised by the qualified Landscape Resident Site Staff, the supervision from the 13<sup>th</sup> to the 24<sup>th</sup> month would be continued by other members of the Project. The updated EMIS for the Contract is shown in [Appendix G](#).
- 3.1.2 According to the contract arrangement, the establishment planting area under the Contract HY/2012/07 Zone 1, 3 & 4 and the Contract HY/2013/12 were handover to this contract from December 2020 and June 2021 separately. For the establishment planting area under the Contract HY/2012/07 Zone 2, it was handed over to the ET of Contact HY/2017/10. Therefore, the establishment planting inspection and maintenance works for the establishment planting area under the Contract HY/2012/07 Zone 1, 3 & 4 and the Contract HY/2013/12 responded from this Contract was commenced from December 2020 and June 2021.
- 3.1.3 All the establishment inspection method including checklist and zoning plan under this Contract was follow the methodology prepared by original Contract's ET which approved by EPD
- 3.1.4 In the Reporting Period, no site inspection for landscape and visual mitigation measures under establishment works was conducted. The details of Establishment inspection for the Project during the reporting period are shown in [Table 3-1](#) and the Establishment inspection checklist is shown in [Appendix F](#).

**Table 3-1 Details of Establishment Inspection for the Project during the Reporting Period**

Planting Area	Respond Party	Quarter of Establishment Monitoring	Inspection Date
HY/2012/07 (Zone 1, 3 & 4)	ET of the Contract HMWSD 2/2020 (HY)	NA	NA
HY/2012/07 (Zone 2)	ET of the Contract HY/2017/10	NA	NA
HY/2013/12	ET of the Contract HMWSD 2/2020 (HY)	NA	NA
HY/2017/10	ET of the Contract HY/2017/10	NA	NA

#### 4 ENVIRONMENTAL COMPLAINT AND NON-COMPLIANCE

##### 4.1 ENVIRONMENTAL COMPLAINT, SUMMONS AND PROSECUTION

4.1.1 In the Reporting Period, no environmental complaint, summons and prosecution under the EM&A Programme was lodged.

4.1.2 The statistical summary table of environmental complaint, summons and prosecution are presented in [Tables 4-1, 4-2 and 4-3](#).

**Table 4-1 Statistical Summary of Environmental Complaints**

Reporting Period	Environmental Complaint Statistics					
	Frequency	Cumulative	Complaint Nature			
			Air	Noise	Water	Others
October 2021	0	0	NA	NA	NA	NA

**Table 4-2 Statistical Summary of Environmental Summons**

Reporting Period	Environmental Summons Statistics				
	Frequency	Cumulative	Complaint Nature		
			Air	Noise	Water
October 2021	0	0	NA	NA	NA

**Table 4-3 Statistical Summary of Environmental Prosecution**

Reporting Period	Environmental Prosecution Statistics				
	Frequency	Cumulative	Complaint Nature		
			Air	Noise	Water
October 2021	0	0	NA	NA	NA

4.1.3 In the Reporting Period, no warning letter related to environmental issue was received from the EPD or HyD.

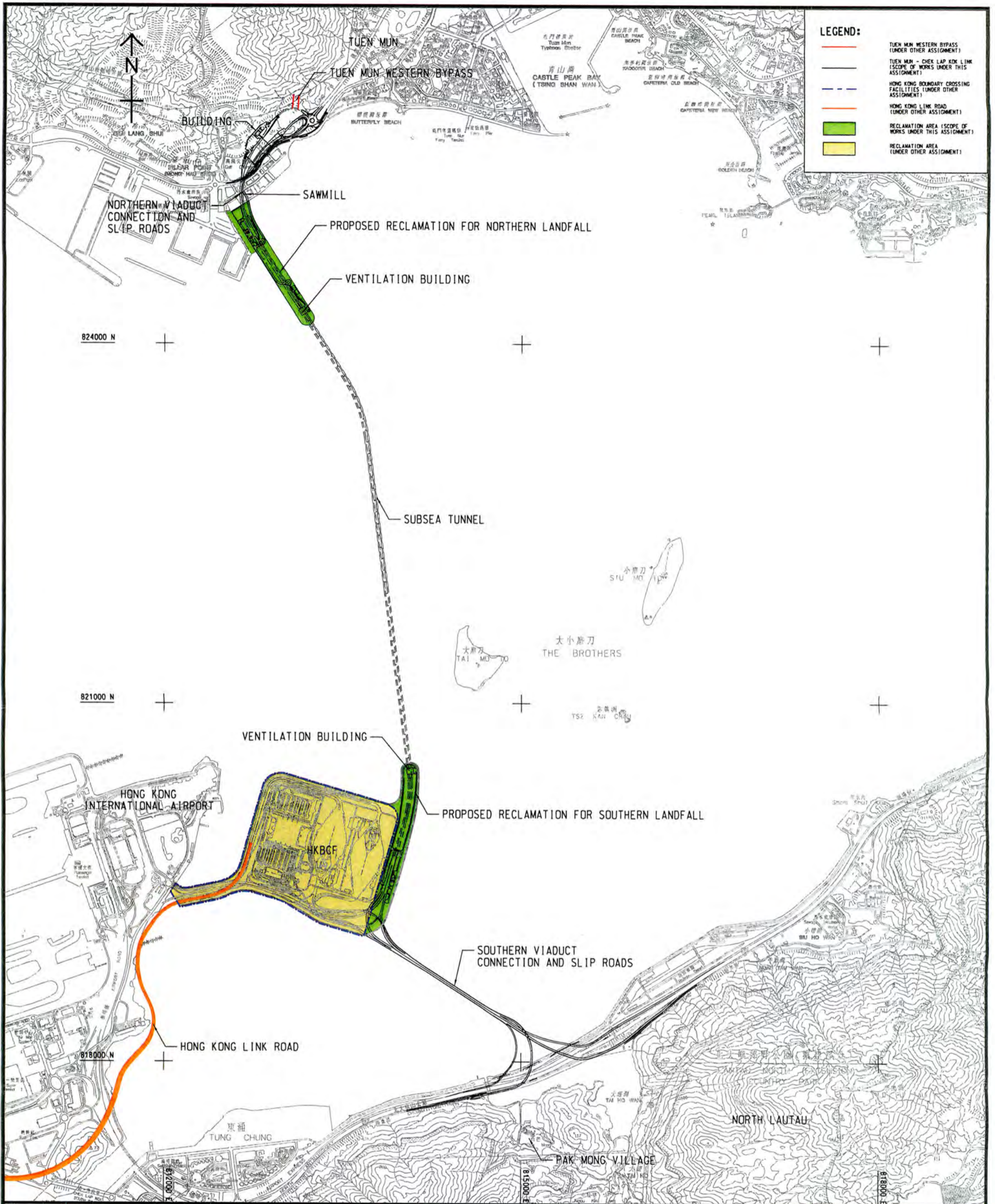
## 5 CONCLUSIONS AND RECOMMENDATIONS

### 5.1 CONCLUSIONS

- 5.1.1 This is 7<sup>th</sup> monthly EM&A report presenting the monitoring results and inspection findings under the Contract HMWSD 2/2020 (HY) for the period of 1 to 31 October 2021.
- 5.1.2 There is no air quality, noise, water quality, ecology, cultural heritage and landfill gas monitoring was required for the contract.
- 5.1.3 The Establishment Period monitoring once per three months for planting works was commenced on 1 June 2020 for the planting area under the contract HY/2012/07 & HY/2013/12 and commenced on 1 February 2021 for the planting area under the contract HY/2017/10 according to the EM&A manual requirement. No establishment period inspection was conducted by this Contract or other TMCLK's Contract during this reporting period.
- 5.1.4 According to the contract arrangement, the establishment planting area under the Contract HY/2012/07 Zone 1, 3 & 4 and the Contract HY/2013/12 were handover to this contract from December 2020 and June 2021 separately. Therefore, the establishment planting inspection and maintenance works for those areas responded from this Contract was commenced from December 2020 and June 2021.
- 5.1.5 In the Reporting Period, no environmental complaint was received.
- 5.1.6 No notifications of summons, or successful prosecution were received during the Reporting Period.

**Appendix A**

**Project Layout Plan**



**Project Title: Tuen Mun - Chek Lap Kok Link**

工程項目名稱: 屯門至赤鱸角連接路

**Project Location**

工程項目位置

(Plan originated from Figure 3.1 of Approved EIA Report reference no.: AEIAR-146/2009)  
(圖則源自已批准的環境影響評估報告編號AEIAR-146/2009圖3.1)

Environmental Protection Department  
環境保護署



Environmental Permit No.: EP-354/2009/D  
環境許可證編號: EP-354/2009/D

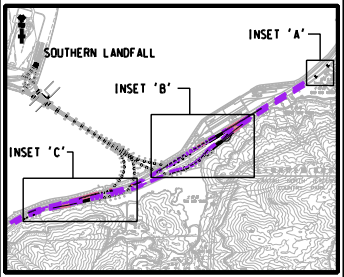
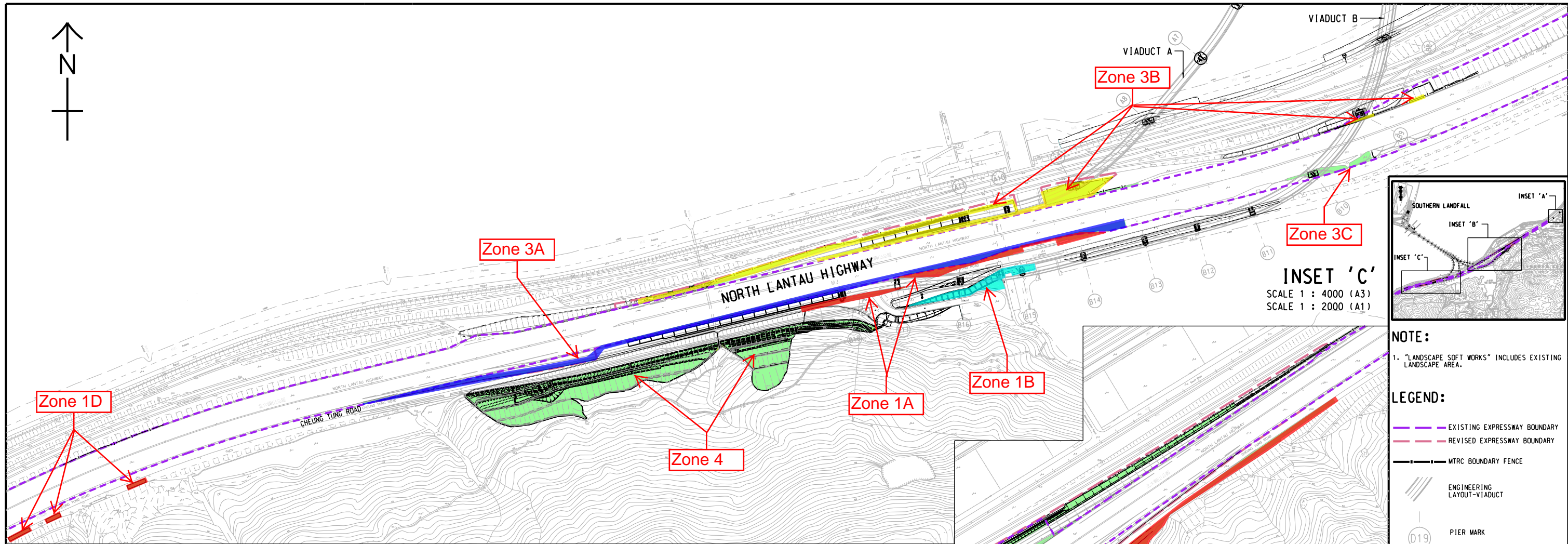
Figure 1  
圖1

**Appendix B**

**Layout Plan of the Contract**



## **Planting Area under Contract HY/2012/07**



**NOTE:**  
1. "LANDSCAPE SOFT WORKS" INCLUDES EXISTING LANDSCAPE AREA.

- LEGEND:**
- EXISTING EXPRESSWAY BOUNDARY
  - REVISED EXPRESSWAY BOUNDARY
  - MTRC BOUNDARY FENCE
  - ENGINEERING LAYOUT-VIADUCT
  - D19 PIER MARK
  - LANDSCAPE SOFT WORKS (PORTION A)

A	18/08/20	ADDENDUM NO.1	KW	CL	CL
-	03/08/20	LANDSCAPE WORKS DEMARCATION PLAN	KW	CL	CL
REV.	DATE	DESCRIPTION	DRAWN	PRE.	APP.

CLIENT  
**HIGHWAYS DEPARTMENT**  
 主要工程管理处(專責事務)  
 Major Works Project Management Office  
 (Special Duties)

**AECOM**

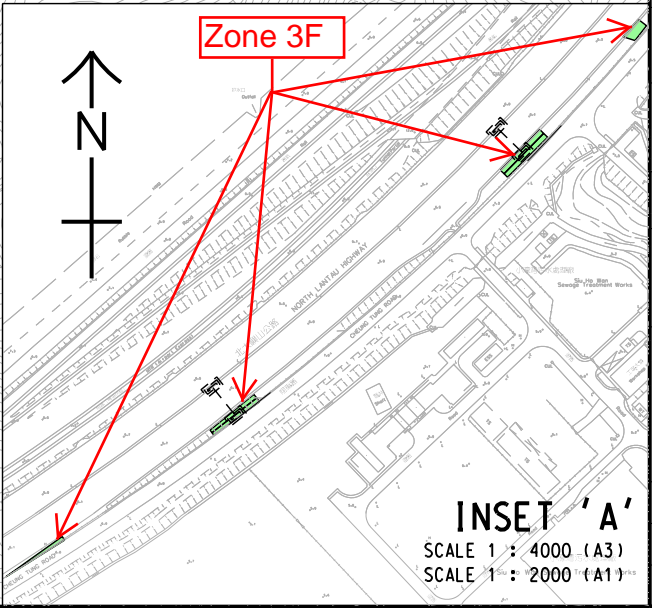
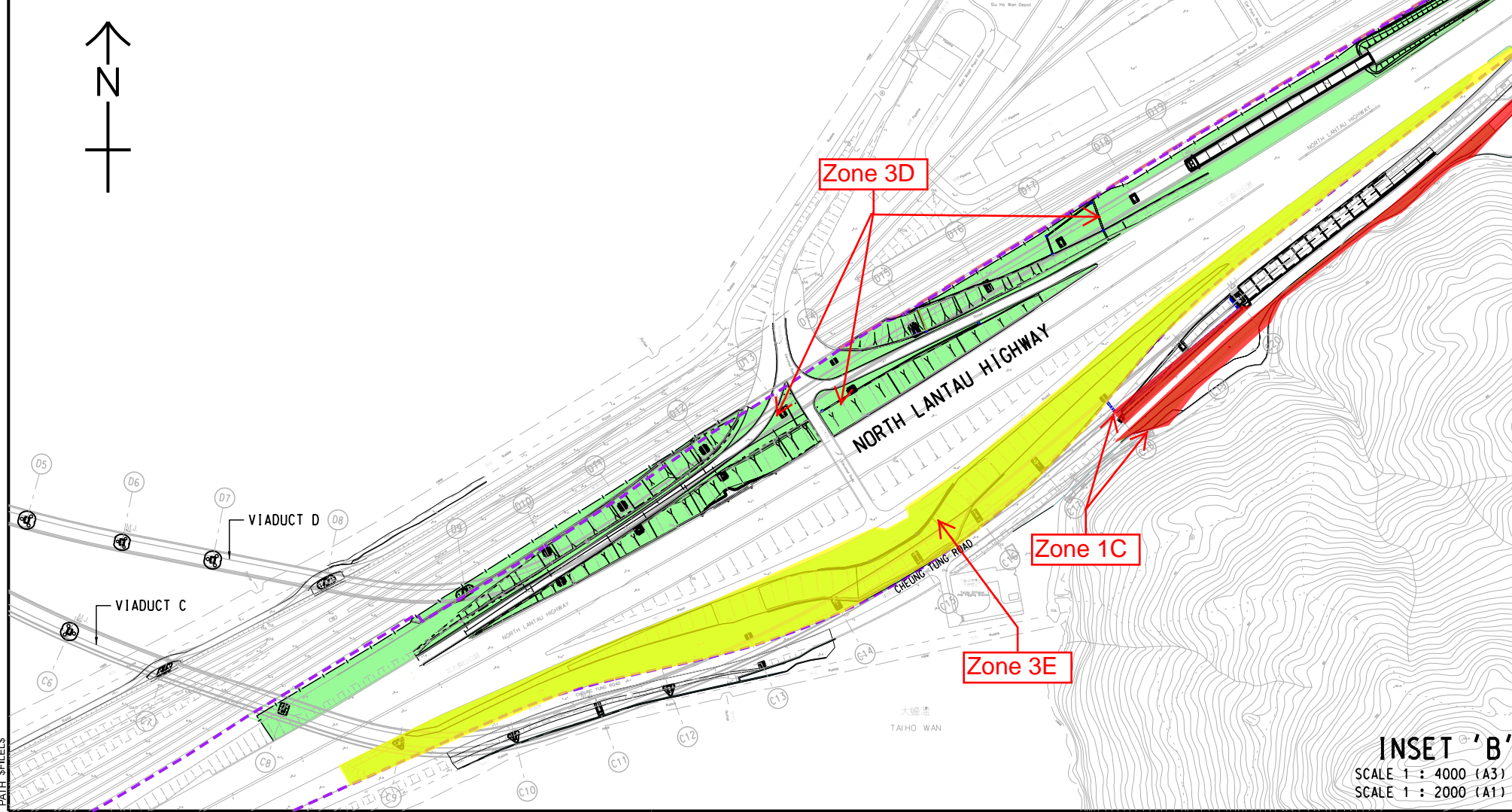
PROJECT  
**TUEN MUN - CHEK LAP KOK LINK**

CONTRACT NO.  
**HMWSD 2/2020(HY)**

CONTRACT TITLE  
**ESTABLISHMENT OF LANDSCAPE SOFTWORKS FOR THE TUEN MUN - CHEK LAP KOK LINK PROJECT**

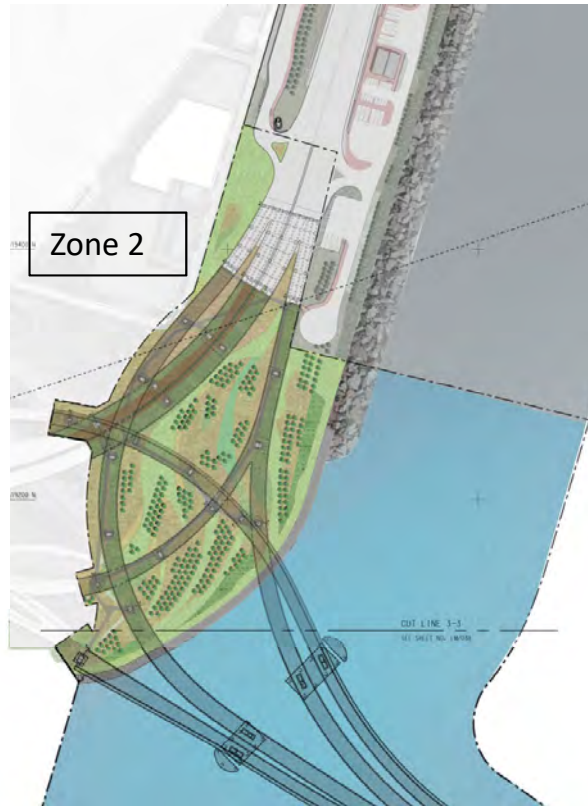
TITLE  
**LANDSCAPE WORKS DEMARCATION PLAN (PORTION A)**

DRAWING REFERENCE	SCALE 1:2000(A1)	SCALE 1:4000(A3)
DRAWN JW	PREPARED CL	APPROVED CL
SKETCH NO.	REV.	A
SK0597		



**INSET 'B'**  
 SCALE 1 : 4000 (A3)  
 SCALE 1 : 2000 (A1)

**INSET 'A'**  
 SCALE 1 : 4000 (A3)  
 SCALE 1 : 2000 (A1)



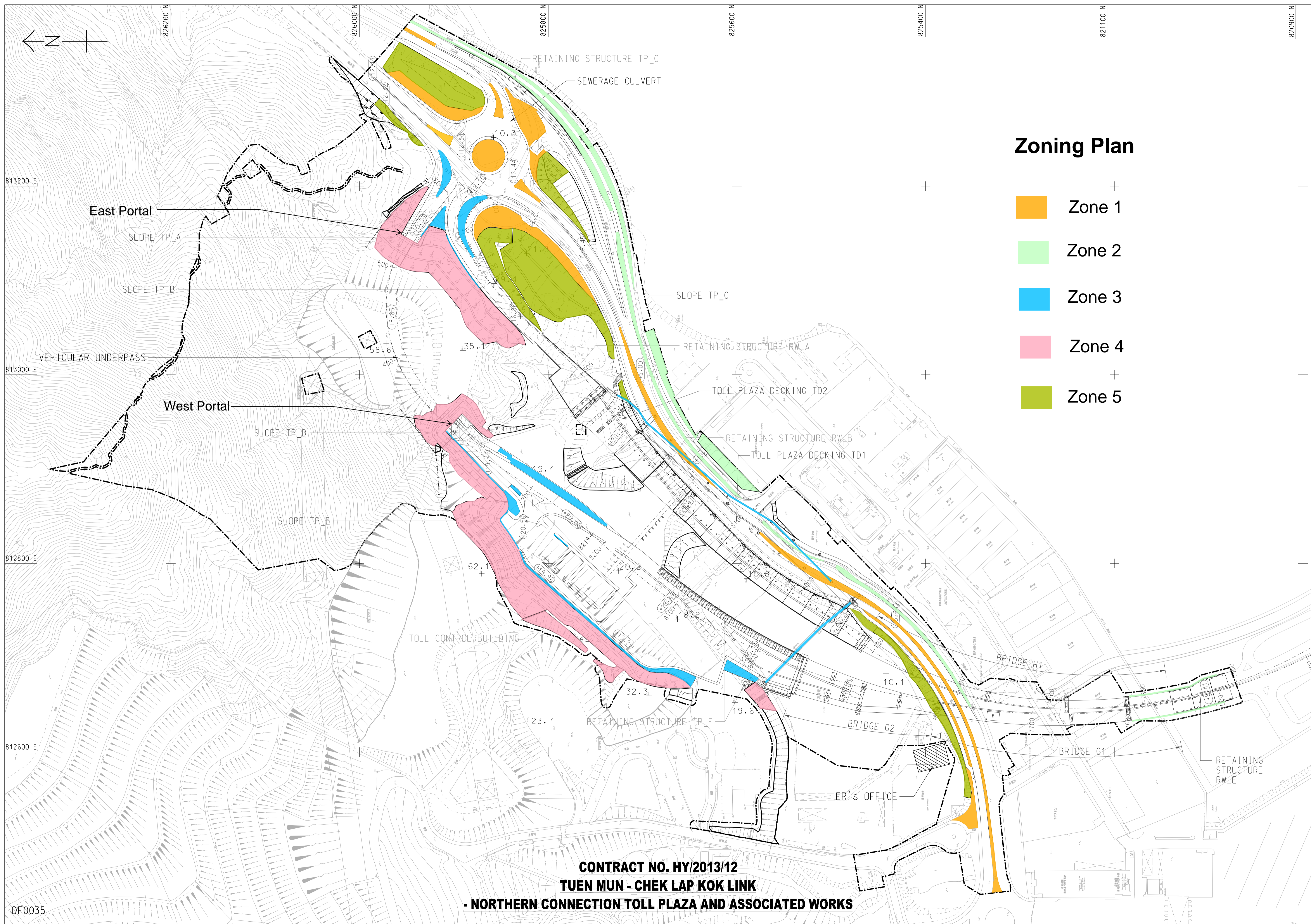
Contract No. HY/2017/10  
TUEN MUN-CHEK LAP KOK LINK  
- NORTHERN CONNECTION TUNNEL BUILDINGS,  
ELECTRICAL AND MECHANICAL WORKS

ZONING PLAN – LANDSCAPE WORKS MONITORING (ESTABLISHMENT WORKS)

Note: Planting works were completed under Contract No. HY/2012/07.

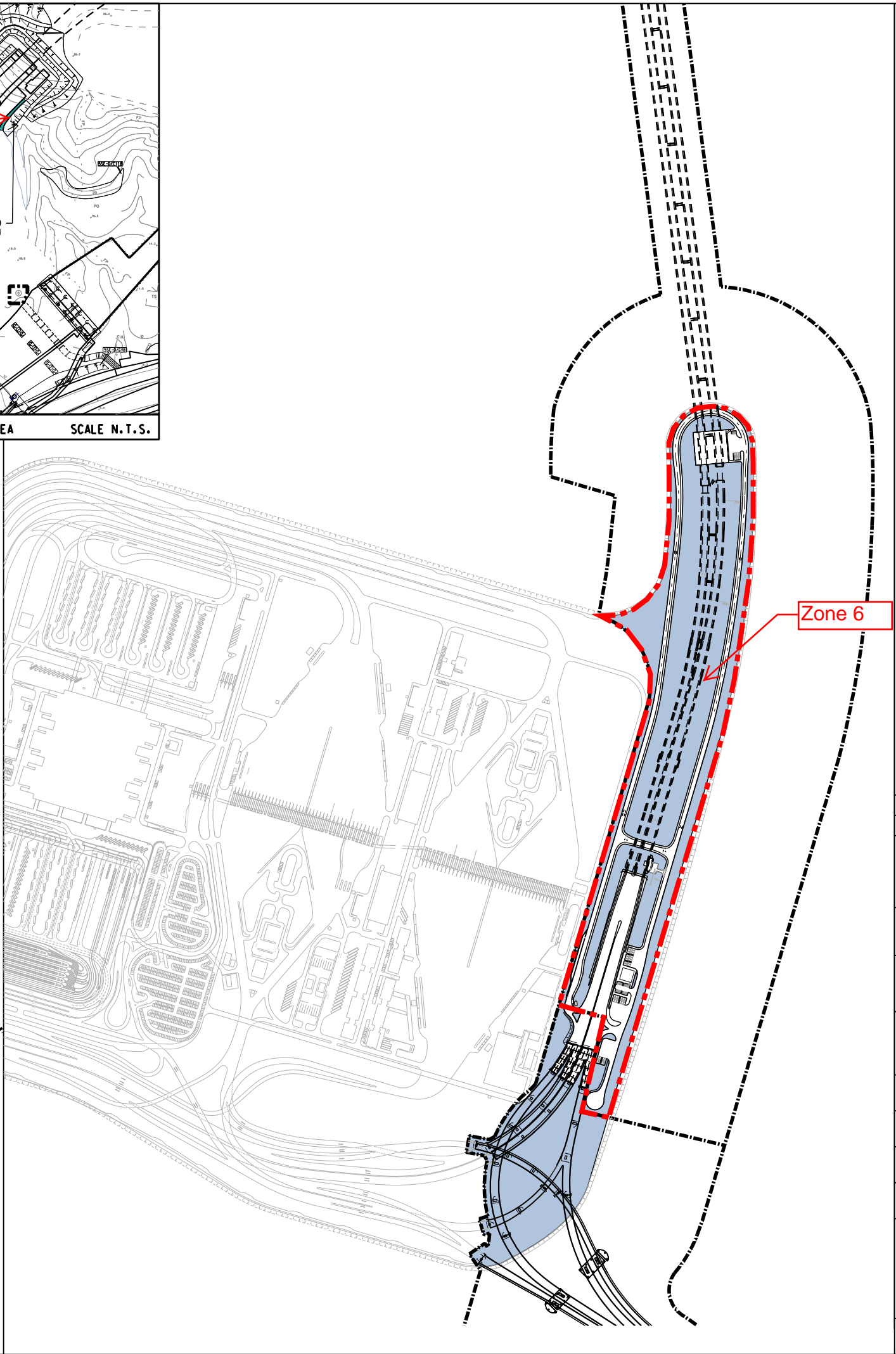
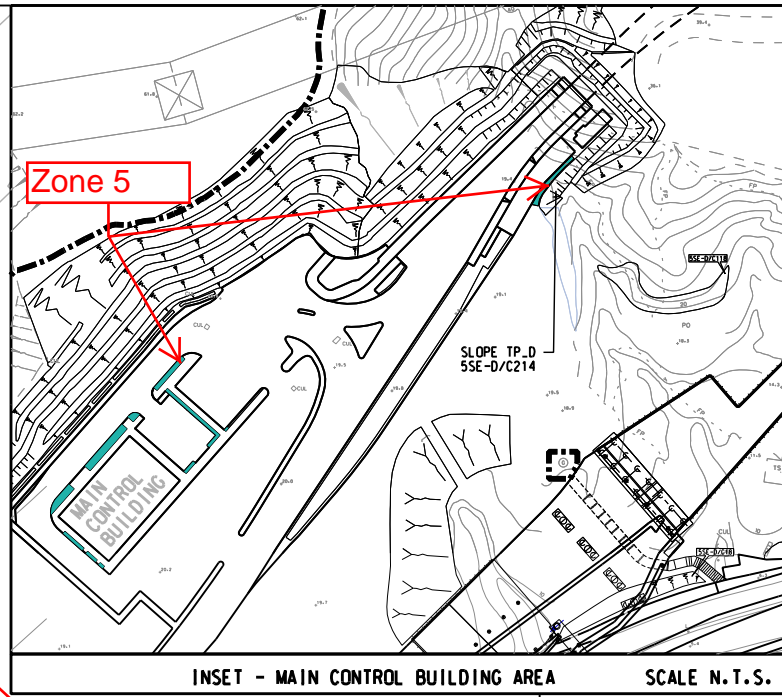
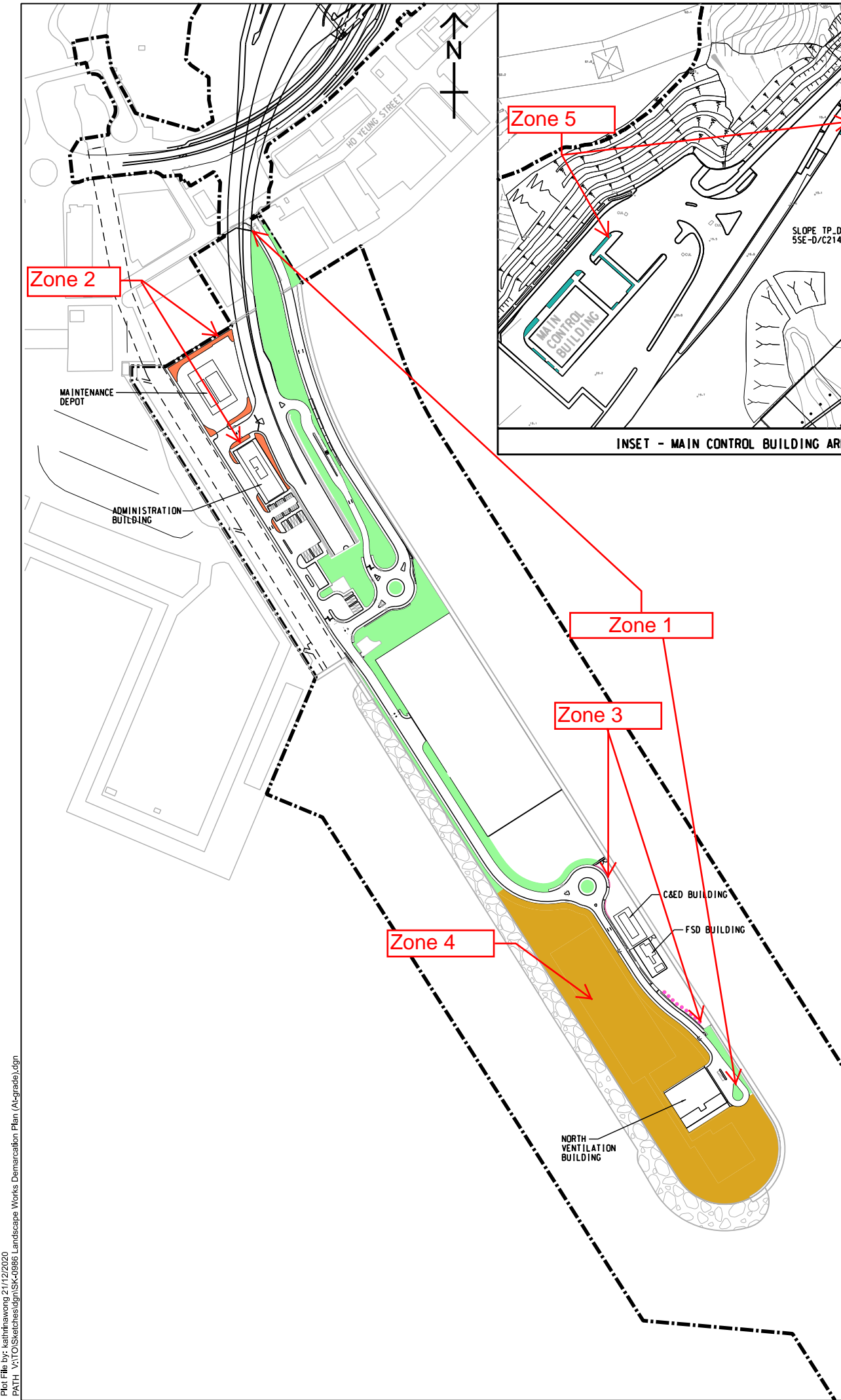
Monitoring of the establishment works continue under Contract No. HY/2017/10.

## **Planting Area under Contract HY/2013/12**



**CONTRACT NO. HY/2013/12**  
**TUEN MUN - CHEK LAP KOK LINK**  
**- NORTHERN CONNECTION TOLL PLAZA AND ASSOCIATED WORKS**

## **Planting Area under Contract HY/2017/10**



**FOR INFORMATION**

REV.	DATE	DESCRIPTION	CHK.	PREP.	DRAWN

CLIENT  
 **HIGHWAYS DEPARTMENT**  
 主要工程管理處 (專責事務)  
 Major Works Project Management Office  
 (Special Duties)

**AECOM** Imagine it. Delivered.

PROJECT  
**TUEN MUN - CHEK LAP KOK LINK**

CONTRACT TITLE  
**TUEN MUN - CHEK LAP KOK LINK - NORTHERN CONNECTION TUNNEL - BUILDINGS, ELECTRICAL AND MECHANICAL WORKS**

PROJECT NO. <b>60240249</b>	CONTRACT NO. <b>HY/2017/10</b>
--------------------------------	-----------------------------------

SCALE <b>N.T.S.</b>	DATE <b>21 DEC. 2020</b>
------------------------	-----------------------------

AMENDMENT TO WORKING DRAWING NO.  
**60240249/C4/**

CHECKED <b>CL</b>	PREPARED <b>CD</b>	DRAWN <b>KW</b>
----------------------	-----------------------	--------------------

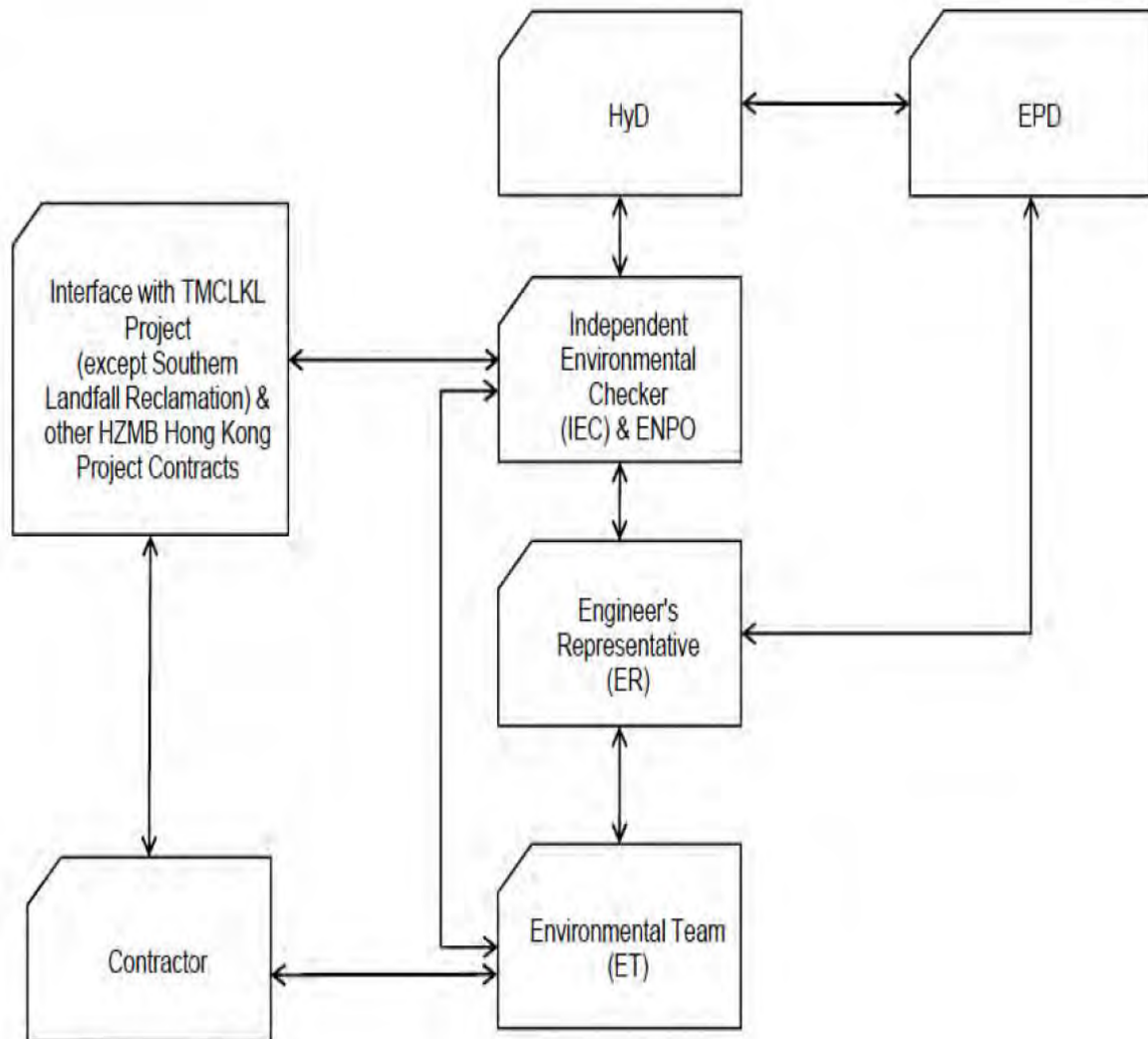
SKETCH TITLE  
**ZONING PLAN - LANDSCAPE WORKS MONITORING (ESTABLISHMENT WORKS)**

SKETCH NO.  
**60240249/C4/SK/0986**

## **Appendix C**

### **Organization of the Contract**





↔ Line of Communication

**Project Organization chart**

**Contact Details of Key Personnel for the Contract HMWSD 2/2020 (HY)**

<b>Organization</b>	<b>Project Role</b>	<b>Name of Key Staff</b>	<b>Tel No</b>	<b>Fax No.</b>
HyD	Employer	Mr. Tony Wong	2762 4982	3188 6614
AECOM	Principal Resident Engineer	Mr. S.W. Fok	2293 6200	2218 7399
AECOM	Senior Resident Landscape Architect	Ms. Candy Lau	2293 6200	2218 7399
AECOM	Resident Engineer (S&E)	Mr. Kelvin Yeung	2293 6200	2218 7399
Ramboll	Environmental Project Office Leader (ENPO Leader)	Mr. YH Hui	3465 2850	3465 2899
Ramboll	Independent Environmental Checker (IEC)	Mr. Brian Tam (Since 12 April 2021)	9700 6767	3465 2899
HKL	Project Manager	Mr. S.C. Wong	2388 6332	2385 7911
AUES	Environmental Team Leader	Mr. Ben Tam	2959 6059	2959 6079
AUES	Environmental Consultant	Miss Nicola Hon	2959 6059	2959 6079
AUES	Environmental Consultant	Mr. Martin Li	2959 6059	2959 6079

**Legend:***HyD (Employer) –Highways Department**AECOM (Engineer) – AECOM Asia Co. Ltd.**HKL (Main Contractor) – Hong Kong Landscaping Co., Ltd.**Ramboll (ENPO and IEC) – Ramboll Hong Kong Limited**AUES (ET) – Action-United Environmental Services & Consulting*

## **Appendix D**

### **Event and Action Plan**

**Event and Action Plan for Landscape and Visual Impact**

EVENT ACTION LEVEL	ACTION			
	ET	IEC	ER	Contractor
Design Check	<ul style="list-style-type: none"> <li>Check final design conforms to the requirements of EP and prepare report.</li> </ul>	<ul style="list-style-type: none"> <li>Check report.</li> <li>Recommend remedial design if necessary</li> </ul>	<ul style="list-style-type: none"> <li>Undertake remedial design if necessary</li> </ul>	
Non- conformity on one occasion	<ul style="list-style-type: none"> <li>Identify Source</li> <li>Inform IEC and ER</li> <li>Discuss remedial actions with IEC, ER and Contractor</li> <li>Monitor remedial actions until rectification has been completed</li> </ul>	<ul style="list-style-type: none"> <li>Check report</li> <li>Check Contractor's working method</li> <li>Discuss with ET and Contractor on possible remedial measures</li> <li>Advise ER on effectiveness of proposed remedial measures.</li> <li>Check implementation of remedial measures</li> </ul>	<ul style="list-style-type: none"> <li>Notify Contractor</li> <li>Ensure remedial measures are properly implemented</li> </ul>	<ul style="list-style-type: none"> <li>Amend working methods</li> <li>Rectify damage and undertake any necessary replacement</li> </ul>
Repeated Non-conformity	<ul style="list-style-type: none"> <li>Identify Source</li> <li>Inform IEC and ER</li> <li>Increase monitoring frequency</li> <li>Discuss remedial actions with IEC, ER and Contractor</li> <li>Monitor remedial actions until rectification has been completed</li> <li>If nonconformity stops, cease additional monitoring</li> </ul>	<ul style="list-style-type: none"> <li>Check monitoring report</li> <li>Check Contractor's working method</li> <li>Discuss with ET and Contractor on possible remedial measures</li> <li>Advise ER on effectiveness of proposed remedial measures</li> <li>Supervise implementation of remedial measures</li> </ul>	<ul style="list-style-type: none"> <li>Notify Contractor</li> <li>Ensure remedial measures are properly implemented</li> </ul>	<ul style="list-style-type: none"> <li>Amend working methods</li> <li>Rectify damage and undertake any necessary replacement</li> </ul>

ET – Environmental Specialist, IEC – Independent Environmental Checker, ER – Engineer's Representative

## **Appendix E**

### **Monitoring Schedule**

**Establishment Inspection Schedule for this Reporting Period**

Date		Planting Area under HY/2012/07 (Zone 1, 3 & 4)	Planting Area under HY/2012/07 (Zone 2)	Planting Area under HY/2013/12	Planting Area under HY/2017/10
Fri	1-October-21				
Sat	2-October-21				
Sun	3-October-21				
Mon	4-October-21				
Tue	5-October-21				
Wed	6-October-21				
Thu	7-October-21				
Fri	8-October-21				
Sat	9-October-21				
Sun	10-October-21				
Mon	11-October-21				
Tue	12-October-21				
Wed	13-October-21				
Thu	14-October-21				
Fri	15-October-21				
Sat	16-October-21				
Sun	17-October-21				
Mon	18-October-21				
Tue	19-October-21				
Wed	20-October-21				
Thu	21-October-21				
Fri	22-October-21				
Sat	23-October-21				
Sun	24-October-21				
Mon	25-October-21				
Tue	26-October-21				
Wed	27-October-21				
Thu	28-October-21				
Fri	29-October-21				
Sat	30-October-21				
Sun	31-October-21				

✓	Monitoring Day
	Sunday or Public Holiday

**Establishment Inspection Schedule for the Next Reporting Period**

Date		Planting Area under HY/2012/07 (Zone 1, 3 & 4)	Planting Area under HY/2012/07 (Zone 2)	Planting Area under HY/2013/12	Planting Area under HY/2017/10
Mon	1-November-21				
Tue	2-November-21				
Wed	3-November-21				
Thu	4-November-21				
Fri	5-November-21				
Sat	6-November-21				
Sun	7-November-21				
Mon	8-November-21				
Tue	9-November-21				
Wed	10-November-21				
Thu	11-November-21		✓		
Fri	12-November-21				
Sat	13-November-21				
Sun	14-November-21				
Mon	15-November-21				
Tue	16-November-21			✓	
Wed	17-November-21				
Thu	18-November-21				
Fri	19-November-21				
Sat	20-November-21				
Sun	21-November-21				
Mon	22-November-21				
Tue	23-November-21	✓			
Wed	24-November-21				
Thu	25-November-21				
Fri	26-November-21				
Sat	27-November-21				
Sun	28-November-21				
Mon	29-November-21				
Tue	30-November-21				

✓	Monitoring Day
	Sunday or Public Holiday

## **Appendix F**

### **Checklist for Establishment Works Monitoring**



**(No inspection was undertaken in this reporting period)**

## **Appendix G**

### **Environmental Mitigation and Enhancement Measures Implementation Schedule (EMIS)**

**CONTRACT NO. HMWSD 2/2020 (HY)**  
**ESTABLISHMENT OF LANDSCAPE SOFTWARES FOR THE TUEN MUN - CHEK LAP KOK LINK**  
**ENVIRONMENTAL MITIGATION AND ENHANCEMENT MEASURE IMPLEMENTATION SCHEDULE**

Landscape and Visual									
EIA reference	EM&A Manual reference	Environmental Protection Measures	Location/ Timing	Implementation Agent	Relevant Standard or Requirement	Implementation Stages			Status
						D	C	O	
10.9	7.6	Existing trees on boundary of the Project Area shall be carefully protected during construction. Detailed Tree Protection Specification shall be provided in the Contract Specification. Under this specification, the Contractor shall be required to submit, for approval, a detailed working method statement for the protection of trees prior to undertaking any works adjacent to all retained trees, including trees in contractor's works areas. (Tree protection measures will be detailed at Tree Removal Application stage) (CM1)	All areas/detailed design/ during construction	Design Consultant/ Contractor	TMEIA	Y	Y		N/A
10.9	7.6	Trees unavoidably affected by the works shall be transplanted where practical. Trees will be transplanted straight to their final receptor site and not held in a temporary nursery. A detailed Tree Transplanting Specification shall be provided in the Contract Specification. Sufficient time for necessary tree root and crown preparation periods shall be allowed in the project programme (CM2)	All areas/detailed design/ during construction	Design Consultant/ Contractor	TMEIA	Y	Y		N/A
10.9	7.6	Hillside and roadside screen planting to proposed roads, associated structures and slope works (CM3)	All areas/detailed design/ during Construction/ post construction	Design Consultant/ Contractor	TMEIA	Y	Y		N/A
10.9	7.6	Hydroseeding or sheeting of soil stockpiles with visually unobtrusive material (in earth tone) (CM4)	All areas/detailed design/ during Construction/ post construction	Design Consultant/ Contractor	TMEIA	Y	Y		N/A
10.9	7.6	Screening of construction works by hoardings around works area in visually unobtrusive colours, to screen works (CM5)	All areas/detailed design/ during Construction	Design Consultant/ Contractor	TMEIA	Y	Y		N/A

**CONTRACT NO. HMWSD 2/2020 (HY)**  
**ESTABLISHMENT OF LANDSCAPE SOFTWARES FOR THE TUEN MUN - CHEK LAP KOK LINK**  
**ENVIRONMENTAL MITIGATION AND ENHANCEMENT MEASURE IMPLEMENTATION SCHEDULE**

<b>Landscape and Visual</b>									
EIA reference	EM&A Manual reference	Environmental Protection Measures	Location/ Timing	Implementation Agent	Relevant Standard or Requirement	Implementation Stages			Status
						D	C	O	
10.9	7.6	Control night-time lighting and glare by hooding all lights (CM6)	All areas/detailed design/ during Construction	Design Consultant/ Contractor	TMEIA	Y	Y		N/A
10.9	7.6	Ensure no run-off into water body adjacent to the Project Area (CM7)	All areas/detailed design/ during Construction	Design Consultant/ Contractor	TMEIA	Y	Y		N/A
10.9	7.6	Avoidance of excessive height and bulk of buildings and structures (CM8)	All areas/detailed design/ during Construction	Design Consultant/ Contractor	TMEIA	Y	Y		N/A
10.9	7.6	Recycle/Reuse all felled trees and vegetation, e.g. mulching (CM9)	All areas/detailed design/ during Construction	Design Consultant/ Contractor	TMEIA	Y	Y		N/A
10.9	7.6	Compensatory tree planting shall be provided to the satisfaction of relevant Government departments. Required numbers and locations of compensatory trees shall be determined and agreed separately with Government during the Tree Felling Application process under ETWBTC 3/2006 (CM10)	All areas/detailed design/ during Construction	Design Consultant/ Contractor	TMEIA	Y	Y		✓
10.9	7.6	Re-vegetation of affected woodland/shrubland with native species (OM1)	All areas/detailed design/ during Construction/ post construction	Design Consultant/ Contractor	TMEIA	Y	Y	Y	✓ maintenance agent : HyD
10.9	7.6	Tall buffer screen tree / shrub / climber planting where appropriate should be incorporated to soften hard engineering structures and facilities (OM2)	All areas/detailed design/ during Construction/ post construction	Design Consultant/ Contractor	TMEIA	Y	Y	Y	✓ maintenance agent : HyD & LCSD
10.9	7.6	Streetscape elements (e.g. paving, signage, street furniture, lighting etc.) shall be sensitively designed in a manner that responds to the local context, and minimises potential negative landscape and visual impacts. Lighting units should be directional and	All areas/detailed design/ during Construction/ post construction	Design Consultant/ Contractor	TMEIA	Y	Y	Y	N/A

**CONTRACT NO. HMWSD 2/2020 (HY)**  
**ESTABLISHMENT OF LANDSCAPE SOFTWARES FOR THE TUEN MUN - CHEK LAP KOK LINK**  
**ENVIRONMENTAL MITIGATION AND ENHANCEMENT MEASURE IMPLEMENTATION SCHEDULE**

Landscape and Visual									
EIA reference	EM&A Manual reference	Environmental Protection Measures	Location/ Timing	Implementation Agent	Relevant Standard or Requirement	Implementation Stages			Status
						D	C	O	
		minimize unnecessary light spill (OM3)							
10.9	7.6	Structure, ornamental tree / shrub / climber planting should be provided along roadside amenity strips, central dividers and newly formed slopes to enhance the townscape quality and further greenery enhancement (OM4)	All areas/detailed design/ during Construction/ post construction	Design Consultant/ Contractor	TMEIA	Y	Y	Y	✓ maintenance agent : HyD & LCSD
10.9	7.6	Aesthetically pleasing design (visually unobtrusive and non-reflective) as regard to the form, material and finishes shall be incorporated to all buildings, engineering structures and associated infrastructure facilities (OM5)	All areas/detailed design/ during Construction/ post construction	Design Consultant/ Contractor	TMEIA	Y	Y	Y	N/A
10.9	7.6	Avoidance of excessive height and bulk of buildings and structures (OM6)	All areas/detailed design/ during Construction/ post construction	Design Consultant/ Contractor	TMEIA	Y	Y	Y	N/A

Remarks:

- ✓ Compliance of Mitigation Measures
- <> Compliance of Mitigation Measures but need improvement.
- × Non-compliance of Mitigation Measures
- ▲ Non-compliance of Mitigation Measures but rectified by Contractor
- △ Deficiency of Mitigation Measures but rectified by Contractor
- N/A Not Applicable in Reporting Period

Legend: D=Design, C=Construction, O=Operation

Note: Funding Agent for all mitigation measures will be the Highways Department of the Hong Kong SAR Government

## **Appendix H**

### **Cumulative Statistics on Exceedance and Complaint**

**Table H-1 Statistical Summary of Environmental Complaints**

Reporting Period	Environmental Complaint Statistics					
	Frequency	Cumulative	Complaint Nature			
			Air	Noise	Water	Others
October 2021	0	0	NA	NA	NA	NA
Cumulative since Contract commencement	0	0	NA	NA	NA	NA

**Table H-2 Statistical Summary of Environmental Summons**

Reporting Period	Environmental Summons Statistics				
	Frequency	Cumulative	Complaint Nature		
			Air	Noise	Water
October 2021	0	0	NA	NA	NA
Cumulative since Contract commencement	0	0	NA	NA	NA

**Table H-3 Statistical Summary of Environmental Prosecution**

Reporting Period	Environmental Prosecution Statistics				
	Frequency	Cumulative	Complaint Nature		
			Air	Noise	Water
October 2021	0	0	NA	NA	NA
Cumulative since Contract commencement	0	0	NA	NA	NA