

**Contract No. HY/2017/10  
Tuen Mun – Chek Lap Kok Link –  
Northern Connection Tunnel  
Buildings, Electrical and Mechanical  
Works**

***Fifth Monthly EM&A Report***

14 November 2018

**Environmental Resources Management**  
2507, 25/F One Harbourfront  
18 Tak Fung Street  
Hung Hom, Kowloon  
Hong Kong  
Telephone 2271 3000  
Facsimile 2723 5660

# Contract No. HY/2017/10



## Tuen Mun – Chek Lap Kok Link – Northern Connection Tunnel Buildings, Electrical and Mechanical Works

### Environmental Resources Management

2507, 25/F One Harbourfront  
18 Tak Fung Street  
Hung Hom, Kowloon  
Hong Kong  
Telephone: (852) 2271 3000  
Facsimile: (852) 2723 5660  
E-mail: post.hk@erm.com  
http://www.erm.com

### Fifth Monthly EM&A Report

Document Code: 0463091\_5th Monthly EM&A\_20181114.doc

Client:		Project No:			
Gammon		0463091			
Summary:		Date:			
<p>This document presents the Fifth Monthly EM&amp;A Report for Tuen Mun – Chek Lap Kok Link – Northern Connection Tunnel Buildings, Electrical and Mechanical Works.</p>		14 November 2018			
		Approved by:			
					
		<p>Mr Craig Reid Partner</p>			
		Certified by:			
					
		<p>Dr Jasmine Ng ET Leader</p>			
	Fifth Monthly EM&A Report	VAR	JN	CAR	14/11/18
Revision	Description	By	Checked	Approved	Date
<p>This report has been prepared by Environmental Resources Management the trading name of 'ERM Hong-Kong, Limited', with all reasonable skill, care and diligence within the terms of the Contract with the client, incorporating our General Terms and Conditions of Business and taking account of the resources devoted to it by agreement with the client.</p> <p>We disclaim any responsibility to the client and others in respect of any matters outside the scope of the above.</p>		<p>Distribution</p> <p><input type="checkbox"/> Internal</p> <p><input checked="" type="checkbox"/> Public</p> <p><input type="checkbox"/> Confidential</p>			



Ref.: HYDHZMBEEM00\_0\_6977L.18

14 November 2018

AECOM  
Engineer's Representative's Office  
No. 8 Mong Fat Street, Tuen Mun  
New Territories, Hong Kong

By Fax (2293 6300) and By Post

Attention: Mr. Desmond Fung

Dear Mr. Fung,

**Re: Agreement No. CE 48/2011 (EP)  
Environmental Project Office for the  
HZMB Hong Kong Link Road, HZMB Hong Kong Boundary Crossing  
Facilities, and Tuen Mun-Chek Lap Kok Link – Investigation**

**Contract No. HY/2017/10 TM-CLKL Northern Connection Tunnel  
Buildings, Electrical and Mechanical Works  
Fifth Monthly EM&A Report (October 2018)**

Reference is made to the Fifth Monthly Environmental Monitoring and Audit (EM&A) Report (October 2018) (ET's ref.: "0463091\_5th Monthly EM&A\_20181114.doc" dated 14 November 2018) certified by the ET Leader and provided to us via e-mail on 12 November 2018.

Please be informed that we have no adverse comments on the captioned Report. We write to verify the captioned submission in accordance with Condition 4.4 of EP-354/2009/D.

Thank you for your attention. Please do not hesitate to contact the undersigned or the ENPO Leader Mr. Y. H. Hui should you have any queries.

Yours sincerely,



F. C. Tsang  
Independent Environmental Checker  
Tuen Mun – Chek Lap Kok Link

c.c. HyD – Mrs. Joanna Kwok Tam Yuk Ying (By Fax: 3188 6614)  
HyD – Mr. Tony Pang (By Fax: 3188 6614)  
AECOM – Mr. Conrad Ng (By Fax: 3922 9797)  
ERM – Dr. Jasmine Ng (By Fax: 2723 5660)  
Gammon – Mr. Max Poon (By Fax: 3520 0486)

Internal: DY, YH, DF, ENPO Site

Q:\Projects\HYDHZMBEEM00\02\_Proj\_Mgt\02\_Corr\2018\HYDHZMBEEM00\_0\_6977L.18.docx

## TABLE OF CONTENTS

<b>EXECUTIVE SUMMARY</b>	<b>I</b>
<b>1 INTRODUCTION</b>	<b>1</b>
1.1 BACKGROUND	1
1.2 SCOPE OF REPORT	2
1.3 ORGANIZATION STRUCTURE	2
1.4 SUMMARY OF CONSTRUCTION WORKS	2
<b>2 EM&amp;A RESULTS</b>	<b>4</b>
2.1 AIR QUALITY	4
2.2 EM&A SITE INSPECTION	5
2.3 LANDFILL GAS HAZARD MONITORING	6
2.4 WASTE MANAGEMENT STATUS	6
2.5 ENVIRONMENTAL LICENSES AND PERMITS	7
2.6 IMPLEMENTATION STATUS OF ENVIRONMENTAL MITIGATION MEASURES	9
2.7 SUMMARY OF EXCEEDANCES OF THE ENVIRONMENTAL QUALITY PERFORMANCE LIMIT	9
2.8 SUMMARY OF COMPLAINTS, NOTIFICATION OF SUMMONS AND SUCCESSFUL PROSECUTIONS	9
<b>3 FUTURE KEY ISSUES</b>	<b>10</b>
3.1 CONSTRUCTION ACTIVITIES FOR THE COMING MONTH	10
3.2 KEY ISSUES FOR THE COMING MONTH	10
<b>4 CONCLUSIONS AND RECOMMENDATIONS</b>	<b>11</b>
4.1 CONCLUSIONS	11



### *List of Appendices*

- Appendix A Project Organization for Environmental Works
- Appendix B Construction Programmes
- Appendix C Implementation Schedule of Environmental Mitigation Measures (EMIS)
- Appendix D Summary of Action and Limit Levels
- Appendix E Event Action Plan
- Appendix F Monthly Summary of Waste Flow Table
- Appendix G Cumulative Statistics on Exceedances, Complaints, Notifications of Summons and Successful Prosecutions

## EXECUTIVE SUMMARY

Under *Contract No. HY/2017/10*, Gammon Construction Limited (GCL) is commissioned by the Highways Department (HyD) to undertake Northern Connection Tunnel Buildings, Electrical and Mechanical Works of the Tuen Mun – Chek Lap Kok Link Project (TM-CLK Link Project) while AECOM Asia Company Limited was appointed by HyD as the Engineer. For implementation of the environmental monitoring and audit (EM&A) programme under the Contract, ERM-Hong Kong, Limited (ERM) has been appointed as the Environmental Team (ET) in accordance with *Environmental Permit No. EP-354/2009/A*. Ramboll Hong Kong Ltd. was employed by HyD as the Independent Environmental Checker (IEC) and Environmental Project Office (ENPO). Subsequent applications for variation of environmental permits (VEP), *EP-354/2009/B*, *EP-354/2009/C* and *EP-354/2009/D*, were granted on 28 January 2014, 10 December 2014 and 13 March 2015, respectively.

The construction phase of the Project commenced on 7 June 2018 and will tentatively be completed by 2021. The impact monitoring of the EM&A programme, including air quality and environmental site inspections, were commenced on 7 June 2018.

This is the Fifth Monthly EM&A report presenting the EM&A works carried out during the period from 1 to 31 October 2018 for the *Contract No. HY/2017/10 Northern Connection Tunnel Buildings, Electrical and Mechanical Works* (the “Project”) in accordance with the Updated EM&A Manual of the TM-CLK Link Project. As informed by the Contractor, major activities in the reporting period included:

### ***Land-based Works***

- Bar bending, timber formwork and concreting at Toll Control Building;
- Architectural, Builder’s Work and Finishing and Electrical and Mechanical Works at Ventilation Plant Room;
- Electrical and Mechanical Works at Northern Ventilation Building;
- Socket H-piling at Administration Building;
- Additional land ground investigation (GI) and socket H-piling at Maintenance Depot, trial pits and laboratory testing.

A summary of monitoring and audit activities conducted in the reporting period is listed below <sup>(1)</sup>:

24-hour TSP Monitoring	11 sessions
1-hour TSP Monitoring	11 sessions
Joint Environmental Site Inspection	4 sessions

#### Summary of Breaches of Action/Limit Levels

##### *Breaches of Action and Limit Levels for Air Quality*

Three (3) Action Level exceedances for 1-hour TSP were recorded by the Environmental Team of Contract No. HY/2012/08 during the reporting period.

#### Environmental Complaints, Non-compliance & Summons

There was no environmental complaint, notification of summons or successful prosecution recorded in the reporting period.

#### Reporting Change

There was no reporting change in the reporting period.

#### Upcoming Works for the Next Reporting Month

Works to be undertaken in the next monitoring period of November 2018 include the following:

##### ***Land-based Works***

- Bar bending, timber formwork and concreting at Toll Control Building;
- Architectural, Builder's Work and Finishing and Electrical and Mechanical Works at Ventilation Plant Room;
- Electrical and Mechanical Works at Northern Ventilation Building;
- Socket H-piling at Administration Building;
- Socket H-piling at Maintenance Depot; and
- Additional land ground investigation (GI) at Fire Services Department Building and Customs and Excise Department Building.

#### **Future Key Issues**

(1) ET justification on the Contract Specific Environmental Monitoring and Audit activities under this Project was submitted to ENPO on 11 September 2018

Potential environmental impacts arising from the above upcoming construction activities in the next reporting month of November 2018 are mainly associated with dust and waste management issues.

## 1.1

## BACKGROUND

According to the findings of the Northwest New Territories (NWNT) Traffic and Infrastructure Review conducted by the Transport Department, Tuen Mun Road, Ting Kau Bridge, Lantau Link and North Lantau Highway would be operating beyond capacity after 2016. This forecast has been based on the estimated increase in cross boundary traffic, developments in the Northwest New Territories (NWNT), and possible developments in North Lantau, including the Airport developments, the Lantau Logistics Park (LLP) and the Hong Kong – Zhuhai – Macao Bridge (HZMB). In order to cope with the anticipated traffic demand, two new road sections between NWNT and North Lantau – Tuen Mun – Chek Lap Kok Link (TM-CLKL) and Tuen Mun Western Bypass (TMWB) are proposed.

An Environmental Impact Assessment (EIA) of TM-CLKL (the Project) was prepared in accordance with the EIA Study Brief (No. ESB-175/2007) and the *Technical Memorandum of the Environmental Impact Assessment Process* (EIAO-TM). The EIA Report was submitted under the Environmental Impact Assessment Ordinance (EIAO) in August 2009. Subsequent to the approval of the EIA Report (EIAO Register Number AEIAR-146/2009), an Environmental Permit (EP-354/2009) for TM-CLKL was granted by the Director of Environmental Protection (DEP) on 4 November 2009, and EP variation (VEP) (EP-354/2009/A) was issued on 8 December 2010. Subsequent applications for variation of environmental permits (VEPs), EP-354/2009/B, EP-354/2009/C and EP-354/2009/D, were granted on 28 January 2014, 10 December 2014 and 13 March 2015, respectively.

Under *Contract No. HY/2017/10*, Gammon Construction Limited (GCL) is commissioned by the Highways Department (HyD) to undertake the Northern Connection Tunnel Buildings, Electrical and Mechanical Works of TM-CLKL while AECOM Asia Company Limited was appointed by HyD as the Engineer. For implementation of the environmental monitoring and audit (EM&A) programme under the Contract, ERM-Hong Kong, Limited (ERM) has been appointed as the Environmental Team (ET). Ramboll Hong Kong Ltd. was employed by HyD as the Independent Environmental Checker (IEC) and Environmental Project Office (ENPO).

The construction phase of the Contract commenced on 7 June 2018 and will be tentatively completed by 2021. The impact monitoring phase of the EM&A programme, including air quality and environmental site inspections, commenced on 7 June 2018.

The general layout plan of the Contract components is presented in *Figures 1.1 & 1.2a to c*.





This drawing has been prepared for the use of AECOM's client. It may not be used, modified, reproduced or relied upon by third parties, except as agreed by AECOM or as required by law. AECOM accepts no responsibility, and denies any liability whatsoever, to any party that uses or relies on this drawing without AECOM's express written consent. Do not scale this document. All measurements must be obtained from the stated dimensions.

**AECOM**

PROJECT

TUEN MUN -  
CHEK LAP KOK LINK

CONTRACT TITLE  
TUEN MUN - CHEK LAP KOK LINK  
- NORTHERN CONNECTION TUNNEL  
BUILDINGS, ELECTRICAL AND  
MECHANICAL WORKS

CLIENT

路政署  
HIGHWAYS DEPARTMENT  
港珠澳大桥香港工程管理处  
Hong Kong - Zhuhai - Macao Bridge  
Hong Kong Project Management Office

CONSULTANT

AECOM Asia Company Ltd.  
www.aecom.com

SUB-CONSULTANTS

**Figure 1.1**

ISSUE/REVISION

REV	DATE	DESCRIPTION	CHK.
A	JAN.18	TENDER ADDENDUM NO.1	SYLC
-	DEC.17	TENDER DRAWING	SYLC

STATUS

SCALE  
比例  
A1 1:40000  
DIMENSION UNIT  
尺寸单位  
MILLIMETRES

KEY PLAN

PROJECT NO.  
项目编号  
60240249  
CONTRACT NO.  
合约编号  
HY/2017/10

SHEET TITLE

OVERALL SITE PLAN

SHEET NUMBER

60240249/C4/7051A



[illegible]

PROJECT

CONTRACT TITLE  
TUEN MUN - CHEK LAP KOK LINK  
- NORTHERN CONNECTION TUNNEL  
BUILDINGS, ELECTRICAL AND  
MECHANICAL WORKS

CLIENT



路政署  
HIGHWAYS DEPARTMENT  
港珠澳大橋香港工程管理處  
Hong Kong - Zhuhai - Macao Bridge  
Hong Kong Project Management Office

CONSULTANT

**AECOM Asia Company Ltd.**  
www.aecom.com

**SUB-CONSULTANTS**  
 工程工程集团有限公司

### Figure 1.2a

ISSUE/REVISION			
(Rev)			
A	JAN.18	TENDER ADDENDUM NO.1	SYLC
=	DEC.17	TENDER DRAWING	SYLC
IR (REV)	DATE 日付	DESCRIPTION 内容/内容	CHK 作成

STATUS  
P412

<b>SCALE</b> 比例	<b>DIMENSION UNIT</b> 尺寸单位
A1 1:2500	MILLIMETERS

**KEY PLAN**  
중·하

PROJECT NO. 项目编号	CONTRACT NO. 合同编号
60240249	HY/2017/1

**SHEET TITLE**  
12th 1st

ZONING PLAN  
(SHEET 1)

**SHEET NUMBER**  
1 of 1

60240249/C4/7061A



**AECOM**

PROJECT

TUEN MUN -  
CHEK LAP KOK LINK

CONTRACT TITLE  
TUEN MUN - CHEK LAP KOK LINK  
- NORTHERN CONNECTION TUNNEL  
BUILDINGS, ELECTRICAL AND  
MECHANICAL WORKS

CLIENT

 路政署  
HIGHWAYS DEPARTMENT  
港珠澳大橋管理處  
Hong Kong - Zhuhai - Macao Bridge  
Hong Kong Project Management Office

CONSULTANT

AECOM Asia Company Ltd.  
www.aecom.com

SUB-CONSULTANTS

**Figure 1.2b**

ISSUE/REVISION

NO.	DATE	DESCRIPTION	CHK.
A	JAN.18	TENDER ADDENDUM NO.1	SYLC
DEC.17	TENDER DRAWING	SYLC	

STATUS

SCALE	DIMENSION UNIT
A1 1 : 2500	MILLIMETRES

KEY PLAN

PROJECT NO.	CONTRACT NO.
60240249	HY/2017/10

SHEET TITLE

ZONING PLAN  
(SHEET 2)

SHEET NUMBER

60240249/C4/7062A

60240249/C4/7063A



## 1.2

### SCOPE OF REPORT

This is the Fifth Monthly EM&A Report under the *Contract No. HY/2017/10 Tuen Mun – Chek Lap Kok Link – Northern Connection Tunnel Buildings, Electrical and Mechanical Works*. This report presents a summary of the environmental monitoring and audit works in October 2018.

## 1.3

### ORGANIZATION STRUCTURE

The organization structure of the Contract is shown in *Appendix A*. The key personnel contact names and contact details are summarized in *Table 1.1* below.

**Table 1.1** *Contact Information of Key Personnel*

Party	Position	Name	Telephone	Fax
HyD (Highways Department)	Project Coordinator	Joseph Lee	2762 4958	3188 6614
	Senior Engineer	Cheng Pan	2762 3383	3188 6614
ER (AECOM Asia Company Limited)	Principle Resident Engineer	S. W. Fok	2293 6200	2293 6300
	Resident Engineer	Desmond Fung	2293 6200	2293 6300
ENPO / IEC (Ramboll Hong Kong Ltd.)	ENPO Leader	Y.H. Hui	3465 2850	3465 2899
	IEC	Dr. F.C. Tsang	3465 2851	3465 2899
Contractor (Gammon Construction Limited)	Site Agent	Kenneth Tai	9039 4723	-
	Environmental Officer	Max Poon	9103 6303	-
ET (ERM-HK)	ET Leader	Dr. Jasmine Ng	2271 3311	2723 5660

## 1.4

### SUMMARY OF CONSTRUCTION WORKS

The construction phase of the Contract commenced on 7 June 2018. The three-month rolling construction programme is shown in *Appendix B*.

As informed by the Contractor, details of the major works carried out in this reporting month are listed below:

#### *Land-based Works*

- Bar bending, timber formwork and concreting at Toll Control Building;
- Architectural, Builder's Work and Finishing and Electrical and Mechanical Works at Ventilation Plant Room;
- Electrical and Mechanical Works at Northern Ventilation Building;

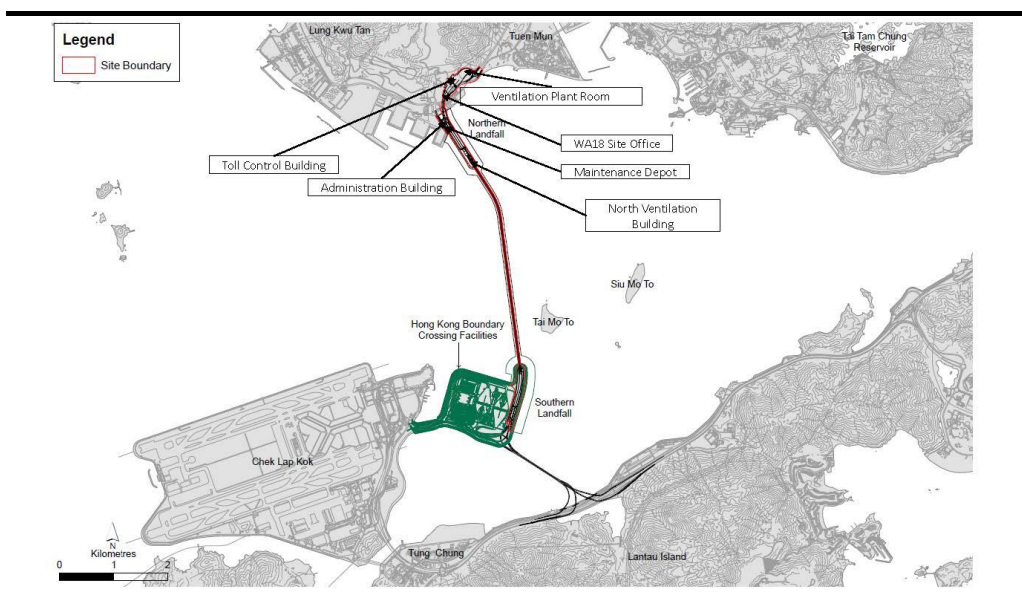


- Socket H-piling at Administration Building;
- Additional land ground investigation (GI) and socket H-piling at Maintenance Depot, trial pits and laboratory testing.

The locations of the construction activities are shown in *Figure 1.3*. The Environmental Sensitive Receivers in the vicinity of the Project are shown in *Figure 1.4*.

The implementation schedule of environmental mitigation measures is presented in *Appendix C*.

**Figure 1.3** *Locations of Major Construction Activities in the Reporting Month*



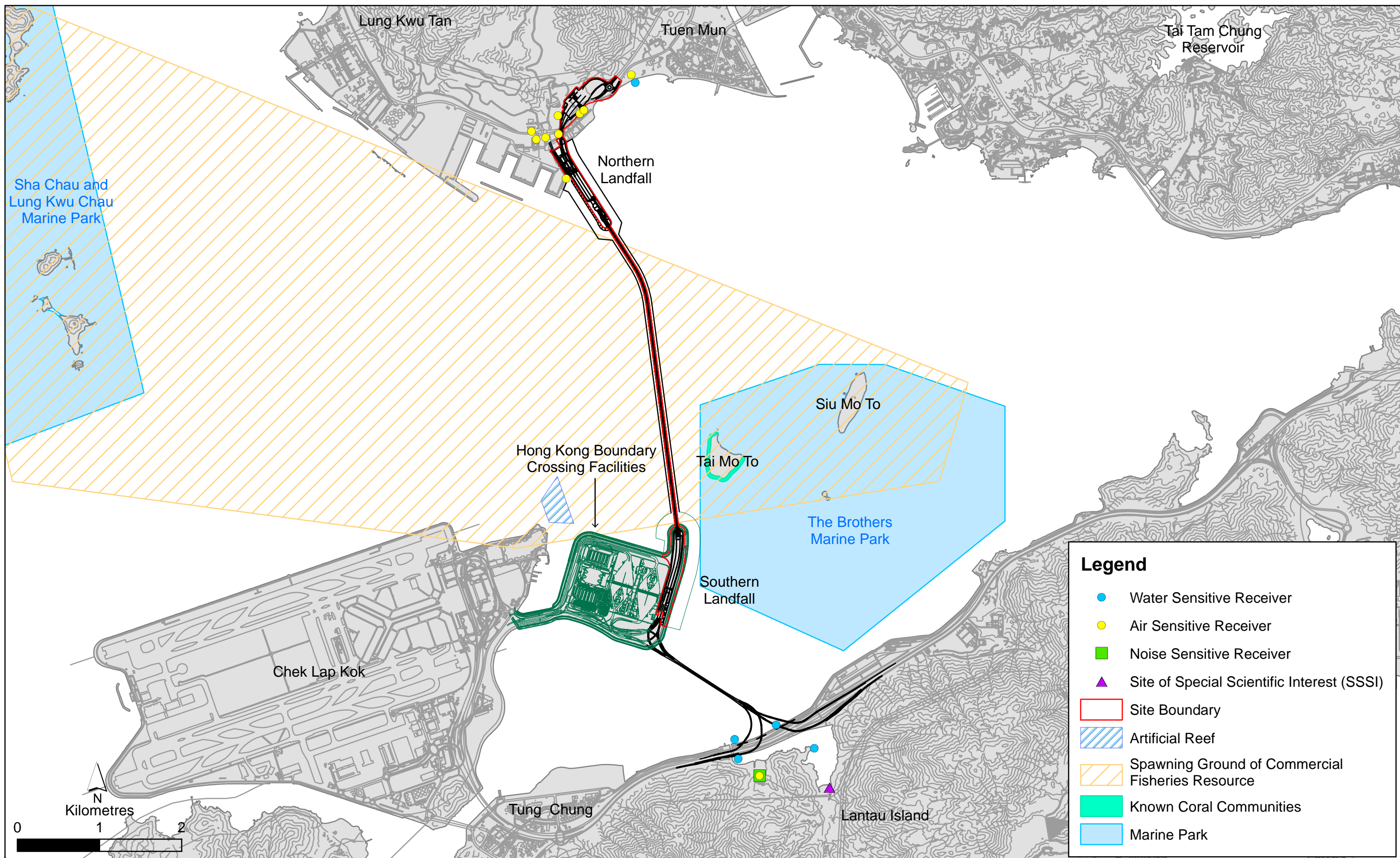


Figure 1.4

## Environmental Sensitive Receivers in the Vicinity of the Project

File: T:\GIS\CONTRACT\0463091\mxd\0463091\_Environmental\_Sensitive\_Receivers.mxd  
Date: 12/7/2018

**Environmental  
Resources  
Management**



The EM&A programme required environmental monitoring for air quality and environmental site inspections for air quality, water quality and waste management. The EM&A requirements and related findings for each component are summarized in the following sections

## 2.1 AIR QUALITY

### 2.1.1 Monitoring Requirements and Equipment

In accordance with the Updated EM&A Manual and the Enhanced TSP Monitoring Plan, impact 1-hour TSP monitoring was conducted three (3) times every six (6) days and impact 24-hour TSP monitoring was carried out once every six (6) days when the highest dust impact was expected. 1-hr and 24-hr TSP monitoring frequency was increased to three times per day every three days and daily every three days, respectively, as excavation works for launching shaft under *Contract No. HY/2012/08 Tuen Mun-Chek Lap Kok Link – Northern Connection Sub-sea Tunnel Section* commenced on 24 October 2014.

Results of air quality monitoring were adopted from the published EM&A data of *Contract No. HY/2012/08 Tuen Mun-Chek Lap Kok Link – Northern Connection Sub-sea Tunnel Section* <sup>(1)</sup>.

The Action and Limit Levels of the air quality monitoring were adopted from the published EM&A reports of *Contract No. HY/2012/08 Tuen Mun-Chek Lap Kok Link – Northern Connection Sub-sea Tunnel Section* <sup>(2)</sup>. The Action and Limit Levels are provided in *Appendix D*.

The locations of the monitoring stations overlapped with *Contract No. HY/2012/08* are shown in *Figure 2.1* and presented in *Table 2.1*.

**Table 2.1** *Locations of Impact Air Quality Monitoring Stations and its Corresponding Monitoring Requirements*

Monitoring Station	Monitoring Dates	Location	Description	Parameters & Frequency
ASR1	1, 4, 7, 10, 13, 16, 19, 22, 25, 28 and 31 October 2018	Tuen Mun Fireboat Station	Office	TSP monitoring
ASR5		Pillar Point Fire Station	Office	<ul style="list-style-type: none"> <li>1-hour Total Suspended Particulates (1-hour TSP, <math>\mu\text{g}/\text{m}^3</math>), 3 times in every 6 days</li> <li>24-hour Total Suspended Particulates (24-hour TSP, <math>\mu\text{g}/\text{m}^3</math>), daily for 24-hour in every 6 days</li> </ul>
AQMS1		Previous River Trade Golf	Bare ground	Enhanced TSP monitoring

(1) Published EM&A data for impact air quality monitoring by *Contract No. HY/2012/08* are available at: <http://www.hzmbenpo.com/>

(2) Published EM&A reports of *Contract No. HY/2012/08* are available at: <http://www.hzmbenpo.com/>



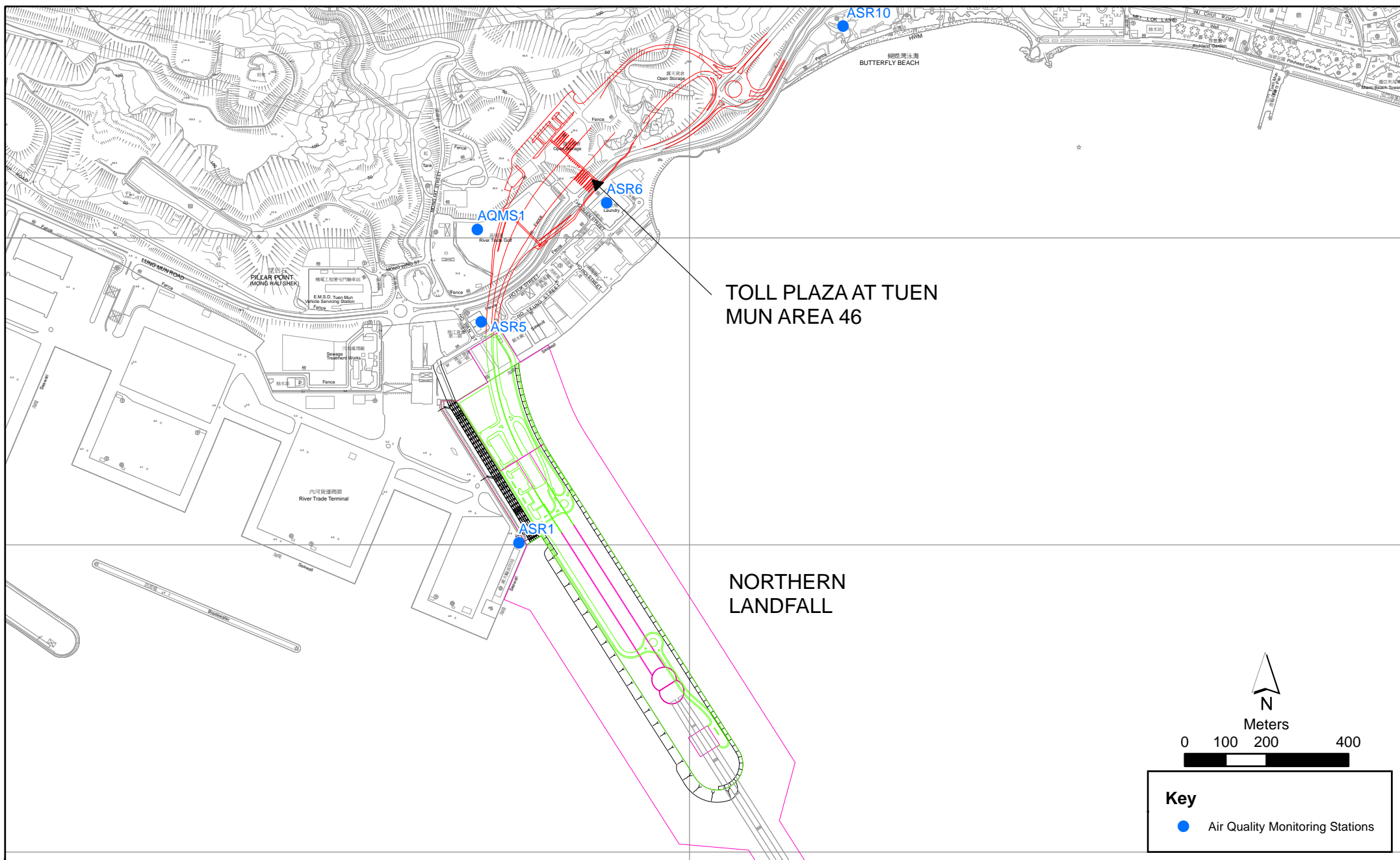


Figure 2.1

Air Quality Monitoring Stations for the Enhanced TSP Monitoring  
(Source: Adopted from Contract No. HY/2012/08 Tuen Mun-Chek Lap Kok Link -  
Northern Connection Sub-sea Tunnel Section)

File: T:\GIS\CONTRACT\0212330\Mxd\0212330\_ASR\_for\_Enhanced\_TSP\_monitoring.mxd  
Date: 21/2/2014

Environmental  
Resources  
Management



Monitoring Station	Monitoring Dates	Location	Description	Parameters & Frequency
ASR6		Butterfly Beach Laundry	Office	(commenced on 24 October 2014 under <i>Contract No. HY/2012/08</i> )
ASR10		Butterfly Beach Park	Recreational uses	<ul style="list-style-type: none"> <li>1-hour Total Suspended Particulates (1-hour TSP, <math>\mu\text{g}/\text{m}^3</math>), 3 times in every 3 days</li> <li>24-hour Total Suspended Particulates (24-hour TSP, <math>\mu\text{g}/\text{m}^3</math>), daily for 24-hour in every 3 days</li> </ul>

### 2.1.2 Results and Observations

Results of air quality monitoring were adopted from the published EM&A data of *Contract No. HY/2012/08 Tuen Mun-Chek Lap Kok Link – Northern Connection Sub-sea Tunnel Section* <sup>(1)</sup>.

Three (3) Action Level exceedances for 1-hour TSP on 4 and 10 October 2018 were recorded by the Environmental Team of *Contract No. HY/2012/08* during the reporting period. The exceedances were considered not related to this Contract upon further investigation and the investigation reports of 4 and 10 October 2018 are presented in *Appendix G*. No action is required to be undertaken in accordance with the Event Action Plan as presented in *Appendix E*. The exceedance recorded on 31 October 2018 is still under investigation and will be reported in the next Monthly EM&A report.

No exceedance of Action and Limit Levels for 24-hour TSP was recorded in the reporting month.

## 2.2 EM&A SITE INSPECTION

Site inspections were carried out on a weekly basis to monitor the implementation of proper environmental pollution control and mitigation measures under the Contract. In the reporting month, four (4) site inspections were carried out on 5, 12, 19 and 26 October 2018.

Key observations and recommendations during the site inspections in this reporting period are summarized in *Table 2.2*.

**Table 2.2 Specific Observations and Recommendations during the Weekly Site Inspection in this Reporting Month**

Inspection Date	Observations	Recommendations/ Remarks
5 October 2018	FSD C&ED <ul style="list-style-type: none"> <li>Watering should be applied on unpaved road.</li> </ul>	FSD C&ED <ul style="list-style-type: none"> <li>The Contractor has been reminded to maintain watering on unpaved road.</li> </ul>

(1) Published EM&A data for impact air quality monitoring by *Contract No. HY/2012/08* are available at: <http://www.hzmbenpo.com/>



Inspection Date	Observations	Recommendations/ Remarks
12 October 2018	Maintenance Depot <ul style="list-style-type: none"> <li>Damaged NRMM label on generator should be replaced.</li> </ul>	Maintenance Depot <ul style="list-style-type: none"> <li>The Contractor has been reminded to replace damaged NRMM label on generator.</li> </ul>
	Toll Control Building, Ventilation Plant Room <ul style="list-style-type: none"> <li>Rubbish bin with lid should be covered.</li> </ul>	Toll Control Building, Ventilation Plant Room <ul style="list-style-type: none"> <li>The Contractor has been reminded to cover rubbish bin with lid.</li> </ul>
19 October 2018	Administration Building <ul style="list-style-type: none"> <li>Stagnant water in drip tray and near generator should be removed.</li> <li>Store chemical drums properly.</li> </ul>	Administration Building <ul style="list-style-type: none"> <li>The Contractor has been reminded to remove stagnant water in drip tray and near the generator</li> <li>The Contractor has been reminded to store chemical drums properly.</li> </ul>
	FSD <ul style="list-style-type: none"> <li>Decolorized NRMM label should be replaced on drilling rig.</li> </ul>	FSD <ul style="list-style-type: none"> <li>The Contractor has been reminded to replace NRMM label on the drilling rig.</li> </ul>
26 October 2018	Administration Building <ul style="list-style-type: none"> <li>Chemical container should be put in drip tray.</li> <li>Water and sediment in the drip tray should be cleared.</li> </ul>	Administration Building <ul style="list-style-type: none"> <li>The Contractor has been reminded to place chemical container in drip tray.</li> <li>The Contractor has been reminded to clear the drip tray of the generator.</li> </ul>
	Ventilation Plant Room <ul style="list-style-type: none"> <li>Domestic waste should be disposed in waste bin and waste bin should be cleared regularly to avoid overloading.</li> <li>Stagnant water in drip tray should be discharged.</li> </ul>	Ventilation Plant Room <ul style="list-style-type: none"> <li>The Contractor has been reminded to dispose domestic waste in waste bin and to clear waste bin regularly.</li> <li>Discharge stagnant water in drip tray.</li> </ul>

The Contractor has rectified all of the observations as identified during environmental site inspections in the reporting month.

### 2.3 LANDFILL GAS HAZARD MONITORING

Landfill gas hazard monitoring was undertaken by the Safety Officer on combustible gas (include methane as part of the component) and oxygen to monitor the risk to workers at the excavation area in October 2018. However, it is noted that carbon dioxide and methane which are required under the Updated EM&A Manual were not measured. As such, the monitoring data are not presented in this report.

### 2.4 WASTE MANAGEMENT STATUS

The Contractor had submitted application form for registration as chemical waste producer under the Contract. Sufficient numbers of receptacles were available for general refuse collection and sorting.

Wastes generated during this reporting period included mainly construction wastes (inert and non-inert). Reference has been made to the waste flow

table prepared by the Contractor (*Appendix F*). The quantities of different types of wastes are summarized in *Table 2.3*.

**Table 2.3**      *Quantities of Different Waste Generated in the Reporting Month*

Month/Year	Inert C&D Materials <sup>(a)</sup> (m <sup>3</sup> )	Inert Construction Waste Re-used (m <sup>3</sup> )	Non-inert Construction Waste <sup>(b)</sup> (kg)	Imported Fill (m <sup>3</sup> )	Recyclable Materials <sup>(c)</sup> (kg)	Chemical Wastes (kg)
October 2018	720	0	26,280	0	63	0

**Notes:**

- (a) Inert construction wastes include hard rock and large broken concrete, and materials disposed as public fill.
- (b) Non-inert construction wastes include general refuse disposed at landfill.
- (c) Recyclable materials include metals, paper, cardboard, plastics, timber and others.

The Contractor was advised to properly maintain on site C&D materials and waste collection, sorting and recording system, dispose of C&D materials and wastes at designated ground and maximize reuse/ recycle of C&D materials and wastes. The Contractor was also reminded to properly maintain the site tidiness and dispose of the wastes accumulated on site regularly and properly.

For chemical waste containers, the Contractor was reminded to treat properly and store temporarily in designated chemical waste storage area on site in accordance with the *Code of Practice on the Packaging, Labelling and Storage of Chemical Wastes*.

## 2.5 ENVIRONMENTAL LICENSES AND PERMITS

The status of environmental licensing and permit is summarized in *Table 2.4* below.

**Table 2.4 Summary of Environmental Licensing and Permit Status**

License/ Permit	License or Permit No.	Date of Issue	Date of Expiry	License/ Permit Holder	Remarks
Environmental Permit	EP-354/2009/D	13 March 2015	N/A	HyD	Tuen Mun- Chek Lap Kok Link
APCO Construction Dust Notification	433493	14 May 2018	N/A	GCL	For Tuen Mun working area
Construction Waste Billing Account	7030836	15 May 2018	N/A	GCL	N/A
Chemical Waste Producer Registration	5213-422-G2827-01	13 June 2018	N/A	GCL	N/A
WPCO Licence for Buildings at C2 area				GCL	Public Notice has been published on 20 August 2018
WPCO Licence for Buildings at C3 area				GCL	Public Notice has been published on 28 August 2018
Construction Noise Permit	GW-RW0451-18	2 November 2018	25 April 2019	GCL	For Toll Control Building, Administration Building, Maintenance Depot and WA18

## 2.6 *IMPLEMENTATION STATUS OF ENVIRONMENTAL MITIGATION MEASURES*

In response to the site audit findings, the Contractors carried out all corrective actions.

A summary of the Implementation Schedule of Environmental Mitigation Measures (EMIS) is presented in *Appendix C*. The necessary mitigation measures relevant to this Contract were implemented properly.

The landscape and visual (L&V) mitigation measures were also monitored on weekly basis in the reporting period. The monitoring status is summarized in *Appendix C*.

## 2.7 *SUMMARY OF EXCEEDANCES OF THE ENVIRONMENTAL QUALITY PERFORMANCE LIMIT*

Three (3) Action Level exceedances for 1-hour TSP were recorded by the Environmental Team of Contract No. *HY/2012/08* during the reporting period. The exceedances recorded on 4 and 10 October 2018 were considered not related to this Contract upon further investigation and the investigation reports are presented in *Appendix G*. No action is required to be undertaken in accordance with the Event Action Plan as presented in *Appendix E*. The exceedance recorded on 31 October 2018 is still under investigation and will be reported in the next Monthly EM&A report.

No exceedance of 24-hour TSP was recorded in this reporting month.

Cumulative statistics are provided in *Appendix G*.

## 2.8 *SUMMARY OF COMPLAINTS, NOTIFICATION OF SUMMONS AND SUCCESSFUL PROSECUTIONS*

The Environmental Complaint Handling Procedure is provided in *Figure 2.2*.

There was no environmental complaint, notification of summons or successful prosecution recorded in the reporting period.

Statistics on complaints, notifications of summons, successful prosecutions are summarized in *Appendix G*.

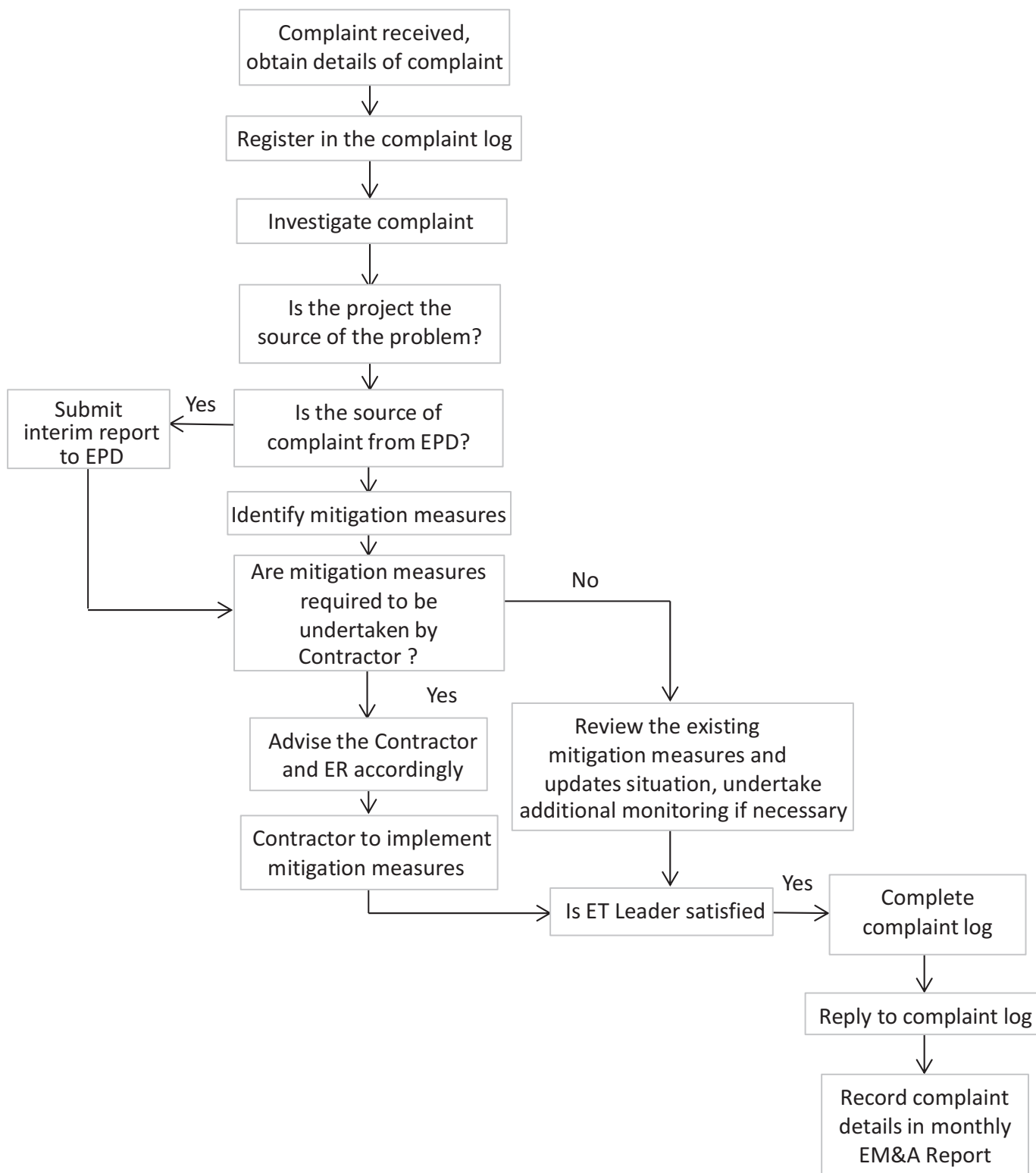


Figure 2.2

Environmental Complaint Handling Procedure

FILE: 0215660n2.cdr  
DATE: 06/12/2013

Environmental  
Resources  
Management



**3.1 CONSTRUCTION ACTIVITIES FOR THE COMING MONTH**

As informed by the Contractor, the major works for the Project in November 2018 will be:

***Land-based Works***

- Bar bending, timber formwork and concreting at Toll Control Building;
- Architectural, Builder's Work and Finishing and Electrical and Mechanical Works at Ventilation Plant Room;
- Electrical and Mechanical Works at Northern Ventilation Building;
- Socket H-piling at Administration Building;
- Socket H-piling at Maintenance Depot; and
- Additional land ground investigation (GI) at Fire Services Department Building and Customs and Excise Department Building.

**3.2 KEY ISSUES FOR THE COMING MONTH**

Potential environmental impacts arising from the above upcoming construction activities in the next reporting month of November 2018 are mainly associated with dust and waste management issues.

#### 4.1 CONCLUSIONS

This Fifth Monthly EM&A Report presents the findings of the EM&A activities undertaken during the period from 1 to 31 October 2018, in accordance with the Updated EM&A Manual and the requirements of EP-354/2009/D.

Air quality (including 1-hour TSP and 24-hour TSP) was carried out in this reporting month.

Three (3) Action Level exceedances for 1-hour TSP were recorded by the Environmental Team of Contract No. *HY/2012/08* during the reporting period. The exceedances recorded on 4 and 10 October 2018 were considered not related to this Contract upon further investigation and the investigation reports are presented in *Appendix G*. No action is required to be undertaken in accordance with the Event Action Plan as presented in *Appendix E*. The exceedance recorded on 31 October 2018 is still under investigation and will be reported in the next Monthly EM&A report.

No exceedance of Action and Limit Levels for 24-hour TSP was recorded in the reporting month.

Environmental site inspection was carried out four (4) times in October 2018. Remedial actions recommended for the deficiencies identified during the site audits were properly implemented by the Contractor.

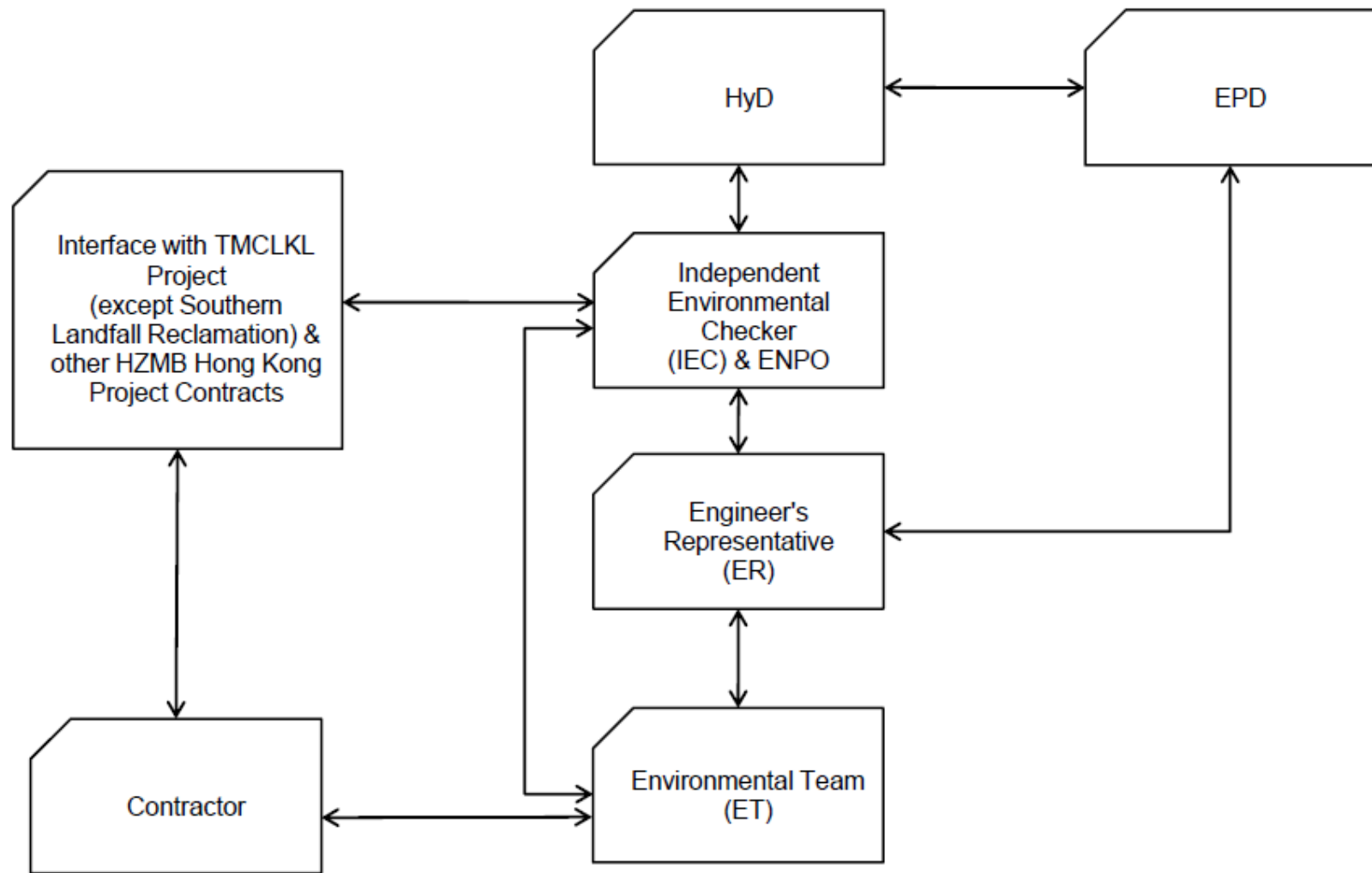
There was no environmental complaint, notification of summons or successful prosecution recorded in the reporting period.

The ET will keep track on the construction works to confirm compliance of environmental requirements and the proper implementation of all necessary mitigation measures.

## Appendix A

# Project Organization for Environmental Works





↔ Line of Communication

Appendix B

## Construction Programme

ID	Activity	Days	Start	Finish	2018																												2019	
					September							October							November							December							January	
					07	24	01	08	15	22	29	05	12	19	26	03	10	17	24	31	07	14												
Three Monthly Programme 20/10/18 - 20/01/19																																		
Contract Dates																																		
Portion Access Dates																																		
P230	Access to Portion X (Day 240)	0d	01-Jan-19																															
Portion Possession Dates																																		
P205	Possession to Portion XVb (Day 236)	0d	28-Dec-18																															
P215	Possession to Portion XVIb (Day 236)	0d	28-Dec-18																															
P225	Possession to Portion XVa (Day 236)	0d	28-Dec-18																															
P235	Possession to Portion XVIa (Day 236)	0d	28-Dec-18																															
Method Statements																																		
Administration Building																																		
MS1050	Prepare & Submit MS for Administration Building (Civil)	24d	20-Sep-18	20-Oct-18																														
MS1060	ICE & ER Approval of MS for Administration Building (Civil)	12d	22-Oct-18	03-Nov-18																														
MS1190	Prepare & Submit MS for Administration Building (E&M)	24d	16-Oct-18	13-Nov-18																														
MS1200	ICE & ER Approval of MS for Administration Building (E&M)	12d	14-Nov-18	27-Nov-18																														
Maintenance Depot																																		
MS1070	Prepare & Submit MS for Maintenance Depot (Civil)	24d	02-Oct-18	30-Oct-18																														
MS1080	ICE & ER Approval of MS for Maintenance Depot (Civil)	12d	31-Oct-18	13-Nov-18																														
MS1210	Prepare & Submit MS for Maintenance Depot (E&M)	24d	14-Nov-18	11-Dec-18																														
MS1220	ICE & ER Approval of MS for Maintenance Depot (E&M)	12d	12-Dec-18	28-Dec-18																														
Custom & Excise Department Building																																		
MS1090	Prepare & Submit MS for C&ED Building (Civil)	24d	31-Oct-18	27-Nov-18																														
MS1100	ICE & ER Approval of MS for C&ED Building (Civil)	12d	28-Nov-18	11-Dec-18																														
MS1230	Prepare & Submit MS for C&ED Building (E&M)	24d	12-Dec-18	12-Jan-19																														
MS1240	ICE & ER Approval of MS for C&ED Building (E&M)	12d	14-Jan-19	26-Jan-19																														
Fire Services Department Building																																		
MS1110	Prepare & Submit MS for Fire Services Building (Civil)	24d	28-Nov-18	28-Dec-18																														
MS1120	ICE & ER Approval of MS for Fire Services Building (Civil)	12d	29-Dec-18	12-Jan-19																														
MS1250	Prepare & Submit MS for Fire Services Building (E&M)	24d	14-Jan-19	13-Feb-19																														
Satellite Control Building																																		
MS1130	Prepare & Submit MS for Satellite Control Building (Civil)	24d	29-Dec-18	26-Jan-19																														
E&M Design																																		
Section A - Tunnel Ventilation System																																		
A010	Design Proposal of Tunnel Ventilation System	60d	18-Aug-18	16-Oct-18																														
A015	Design Proposal of Tunnel Ventilation System - Approval	31d	17-Oct-18	16-Nov-18																														
A020	Tunnel Ventilation Fan Pressure Calculations	60d	29-Sep-18	27-Nov-18																														

THREE MONTHLY ROLLING PROGRAMME

HY/2017/10 TM-CLKL - Northern Connection Tunnel Buildings, Electrical and Mechanical Works

20/10/18 - 20/01/19

P1

Date	Revision	Checked	Approved
20/10/18			

ID	Activity	Days	Start	Finish	2018																	2019				
					September							October				November				December				January		
					07	24	01	08	15	22	29	05	12	19	26	03	10	17	24	31	07	14				
A025	Tunnel Ventilation Fan Pressure Calculations - Approval	28d	28-Nov-18	25-Dec-18																						
A030	Acoustic Calculations	60d	28-Nov-18*	26-Jan-19																						
A040	TVS -Smoke Extraction Fan Static Calculation for Service Gallery	60d	13-Sep-18	11-Nov-18																						
A045	TVS -Smoke Extraction Fan Static Calculation for Service Gallery - Approval	28d	12-Nov-18	09-Dec-18																						
A060	Pressurization Fan Static Calculation for Vehicle Underpass	60d	22-Aug-18	20-Oct-18																						
A065	Pressurization Fan Static Calculation for Vehicle Underpass - Approval	28d	21-Oct-18	17-Nov-18																						
A070	Design Proposal of Power Loading Assessment of TVS	60d	02-Dec-18*	30-Jan-19																						
A080	TVS -Design Proposal including the Smoke Extraction Strategy	60d	13-Sep-18	11-Nov-18																						
A088	TVS -Design Proposal including the Smoke Extraction Strategy - Approval	28d	12-Nov-18	09-Dec-18																						
A090	TVS -Control Logic Review with FSD	60d	13-Sep-18	11-Nov-18																						
A095	TVS -Control Logic Review with FSD - Approval	28d	12-Nov-18	09-Dec-18																						
A100	TVS -Cable Sizing and Voltage Drop for TVFs	60d	18-Dec-18*	15-Feb-19																						
A110	TVS -Structural Calculation -Fan Support	60d	15-Jan-19*	15-Mar-19																						
A120	TVS -Structural Calculation -Duct Support	60d	15-Jan-19*	15-Mar-19																						
A130	TVS -Structural Calculation -Ceiling Mounted Fan Supports	60d	15-Jan-19*	15-Mar-19																						
A140	TVS -Structural Calculation -Vertical Fan Supports	60d	15-Jan-19*	15-Mar-19																						
A150	TVS -Structural Calculation -Horizontal Air Duct Supports	60d	15-Jan-19*	15-Mar-19																						
A160	Tunnel Cable Sizing and Voltage Drop Verification	60d	06-Oct-18	04-Dec-18																						
A165	Tunnel Cable Sizing and Voltage Drop Verification - Approval	30d	05-Dec-18	03-Jan-19																						
A170	Tunnel Cable Containment Calculation	60d	03-Nov-18*	01-Jan-19																						
A175	Tunnel Cable Containment Calculation - Approval	30d	02-Jan-19	31-Jan-19																						
Section B - Tunnel Lighting and Road Lighting System																										
B010	Design Proposal of Tunnel Lighting System (TLS)	60d	04-Aug-18	02-Oct-18																						
B015	Design Proposal of Tunnel Lighting System (TLS) - Approval	30d	03-Oct-18	01-Nov-18																						
B020	Tunnel lighting control	60d	08-Sep-18	06-Nov-18																						
B025	Tunnel lighting control - Approval	30d	07-Nov-18	06-Dec-18																						
B030	TLS -Lux Calculation	60d	08-Sep-18	06-Nov-18																						
B035	TLS -Lux Calculation - Approval	30d	07-Nov-18	06-Dec-18																						
B040	TLS -Structure support design calculation for tunnel lighting	60d	08-Sep-18	06-Nov-18																						
B045	TLS -Structure support design calculation for tunnel lighting - Approval	30d	07-Nov-18	06-Dec-18																						
B050	Design Proposal of Road / Street Lighting System	60d	27-Sep-18	25-Nov-18																						
B055	Design Proposal of Road / Street Lighting System - Approval	30d	26-Nov-18	25-Dec-18																						
B060	Road Lighting Lux Calculation	60d	17-Nov-18*	15-Jan-19																						
B065	Road Lighting Lux Calculation - Approval	30d	16-Jan-19	14-Feb-19																						
Section C - Building Services of MVAC System																										
TCB																										
C012	TCB -AC Cooling Capacity Calculation	60d	31-Jul-18	28-Sep-18																						

### THREE MONTHLY ROLLING PROGRAMME

HY/2017/10 TM-CLKL - Northern Connection Tunnel Buildings, Electrical and Mechanical Works

20/10/18 - 20/01/19

P2

Date	Revision	Checked	Approved
20/10/18			

ID	Activity	Days	Start	Finish	2018																	2019			
					September	October				November				December				January							
						27	24	01	08	15	22	29	05	12	19	26	03	10	17	24	31	07	14		
C015	TCB -AC Cooling Capacity Calculation - Approval	28d	29-Sep-18	26-Oct-18																					
C025	TCB -AHU/PAU Static Pressure Calculation - Approval	28d	31-Aug-18	27-Sep-18																					
C030	TCB -Pump head calculation	60d	03-Oct-18	01-Dec-18																					
C035	TCB -Pump head calculation - Approval	28d	02-Dec-18	29-Dec-18																					
C050	TCB -Fan Static Pressure Calculation	60d	29-Jul-18	26-Sep-18																					
C055	TCB -Fan Static Pressure Calculation - Approval	28d	27-Sep-18	24-Oct-18																					
C060	TCB -Acoustic Performance Calculation	60d	30-Sep-18	28-Nov-18																					
C065	TCB -Acoustic Performance Calculation - Approval	28d	29-Nov-18	26-Dec-18																					
ADB																									
C080	ADB -AHU/PAU Static Pressure Calculation	60d	07-Sep-18	05-Nov-18																					
C085	ADB -AHU/PAU Static Pressure Calculation - Approval	28d	06-Nov-18	03-Dec-18																					
C090	ADB -Pump head calculation	60d	27-Aug-18	25-Oct-18																					
C095	ADB -Pump head calculation - Approval	28d	26-Oct-18	22-Nov-18																					
C100	ADB -Mechanical Ventilation Capacity Calculation	60d	26-Jul-18	23-Sep-18																					
C105	ADB -Mechanical Ventilation Capacity Calculation - Approval	28d	24-Sep-18	21-Oct-18																					
C110	ADB -Fan Static Pressure Calculation	60d	06-Sep-18	04-Nov-18																					
C115	ADB -Fan Static Pressure Calculation - Approval	28d	05-Nov-18	02-Dec-18																					
C120	ADB -Acoustic Performance Calculation	60d	08-Nov-18*	06-Jan-19																					
C125	ADB -Acoustic Performance Calculation - Approval	28d	07-Jan-19	03-Feb-19																					
NVB																									
C130	NVB -AC Cooling Capacity Calculation	60d	13-Sep-18	11-Nov-18																					
C135	NVB -AC Cooling Capacity Calculation - Approval	28d	12-Nov-18	09-Dec-18																					
C140	NVB -Mechanical Ventilation Capacity Calculation	60d	13-Sep-18	11-Nov-18																					
C145	NVB -Mechanical Ventilation Capacity Calculation - Approval	28d	12-Nov-18	09-Dec-18																					
C150	NVB -Fan Static Pressure Calculation	60d	25-Oct-18*	23-Dec-18																					
C155	NVB -Fan Static Pressure Calculation - Approval	28d	24-Dec-18	20-Jan-19																					
C160	NVB -Acoustic Performance Calculation	60d	17-Sep-18	15-Nov-18																					
C165	NVB -Acoustic Performance Calculation - Approval	28d	16-Nov-18	13-Dec-18																					
C170	NVB -Refrigerant Pipes Sizing Calculation	60d	21-Sep-18	19-Nov-18																					
C175	NVB -Refrigerant Pipes Sizing Calculation - Approval	28d	20-Nov-18	17-Dec-18																					
C180	NVB -Staircase Pressurization System Calculation	60d	13-Sep-18	11-Nov-18																					
C185	NVB -Staircase Pressurization System Calculation - Approval	28d	12-Nov-18	09-Dec-18																					
SVB																									
C240	SVB -Staircase Pressurization System Calculation	60d	19-Jan-19*	19-Mar-19																					
CEDB																									
C250	CEDB -AC Cooling Capacity Calculation	60d	09-Nov-18*	07-Jan-19																					
C255	CEDB -AC Cooling Capacity Calculation - Approval	28d	08-Jan-19	04-Feb-19																					

### THREE MONTHLY ROLLING PROGRAMME

HY/2017/10 TM-CLKL - Northern Connection Tunnel Buildings, Electrical and Mechanical Works

20/10/18 - 20/01/19

P3

Date	Revision	Checked	Approved
20/10/18			

[illegible]

### THREE MONTHLY ROLLING PROGRAMME

HY/2017/10 TM-CLKL - Northern Connection Tunnel Buildings, Electrical and Mechanical Works

20/10/18 - 20/01/19

P4

Date	Revision	Checked	Approved
20/10/18			

ID	Activity	Days	Start	Finish	2018																			2019		
					September		October				November				December				January							
					07	24	01	08	15	22	29	05	12	19	26	03	10	17	24	31	07	14				
D090	TCB -Power Factor Correction & Harmonic Current AnalysisCalculation	60d	07-Aug-18	05-Oct-18																						
D095	TCB -Power Factor Correction & Harmonic Current AnalysisCalculation - Apprc	30d	06-Oct-18	04-Nov-18																						
ADB																										
D100	ADB -UPS and Battery Capacity Calculations	60d	01-Aug-18	29-Sep-18																						
D105	ADB -UPS and Battery Capacity Calculations - Approval	30d	30-Sep-18	29-Oct-18																						
D115	ADB -Electrical Loading Demand Calculation - Approval	30d	27-Aug-18	25-Sep-18																						
D120	ADB -Lux Level Calculation	60d	09-Sep-18	07-Nov-18																						
D125	ADB -Lux Level Calculation - Approval	30d	08-Nov-18	07-Dec-18																						
D130	ADB -Cable Sizing and Voltage Drop Verification	60d	30-Sep-18	28-Nov-18																						
D135	ADB -Cable Sizing and Voltage Drop Verification - Approval	30d	29-Nov-18	28-Dec-18																						
D160	ADB -Cable Containment Calculation	60d	10-Oct-18	08-Dec-18																						
D165	ADB -Cable Containment Calculation - Approval	30d	09-Dec-18	07-Jan-19																						
D170	ADB -Earthing Resistance Calculation	60d	30-Sep-18	28-Nov-18																						
D175	ADB -Earthing Resistance Calculation - Approval	30d	29-Nov-18	28-Dec-18																						
D180	ADB -Power Factor Correction & Harmonic Current AnalysisCalculation	60d	30-Sep-18	28-Nov-18																						
D185	ADB -Power Factor Correction & Harmonic Current AnalysisCalculation - Apprc	30d	29-Nov-18	28-Dec-18																						
NVB																										
D205	NVB -Electrical Loading Demand Calculation - Approval	30d	04-Sep-18	03-Oct-18																						
D215	NVB -Lux Level Calculation - Approval	30d	15-Sep-18	14-Oct-18																						
D220	NVB -Cable Sizing and Voltage Drop Verification	60d	11-Aug-18	09-Oct-18																						
D225	NVB -Cable Sizing and Voltage Drop Verification - Approval	30d	10-Oct-18	08-Nov-18																						
D250	NVB -Cable Containment Calculation	60d	19-Sep-18	17-Nov-18																						
D255	NVB -Cable Containment Calculation - Approval	30d	18-Nov-18	17-Dec-18																						
D260	NVB -Earthing Resistance Calculation	60d	11-Aug-18	09-Oct-18																						
D265	NVB -Earthing Resistance Calculation - Approval	30d	10-Oct-18	08-Nov-18																						
D270	NVB -Power Factor Correction & Harmonic Current AnalysisCalculation	60d	11-Aug-18	09-Oct-18																						
D275	NVB -Power Factor Correction & Harmonic Current AnalysisCalculation - Apprc	30d	10-Oct-18	08-Nov-18																						
D280	NVB -HV Electrical Loading Calculation	60d	11-Aug-18	09-Oct-18																						
D285	NVB -HV Electrical Loading Calculation - Approval	30d	10-Oct-18	08-Nov-18																						
SCB																										
D430	SCB -Generator Calculation	60d	28-Dec-18*	25-Feb-19																						
D440	SCB -Fuel Tank Calculation	60d	28-Dec-18*	25-Feb-19																						
CEDB																										
D480	CEDB -UPS and Battery Capacity Calculations	60d	04-Jan-19*	04-Mar-19																						
D490	CEDB -Electrical Loading Demand Calculation	60d	13-Nov-18*	11-Jan-19																						
D495	CEDB -Electrical Loading Demand Calculation - Approval	30d	12-Jan-19	10-Feb-19																						
D520	CEDB -Calculation of Total Electrical Load	60d	13-Nov-18*	11-Jan-19																						

### THREE MONTHLY ROLLING PROGRAMME

HY/2017/10 TM-CLKL - Northern Connection Tunnel Buildings, Electrical and Mechanical Works

20/10/18 - 20/01/19

P5	Date	Revision	Checked	Approved
	20/10/18			



ID	Activity	Days	Start	Finish	2018														2019			
					September		October				November				December				January			
					07	24	01	08	15	22	29	05	12	19	26	03	10	17	24	31	07	14
D525	CEDB -Calculation of Total Electrical Load - Approval	30d	12-Jan-19	10-Feb-19																		
D530	CEDB -Generator Calculation	60d	15-Dec-18*	12-Feb-19																		
D540	CEDB -Fuel Tank Calculation	60d	15-Dec-18*	12-Feb-19																		
FSDB																						
D580	FSDB -UPS and Battery Capacity Calculations	60d	26-Dec-18*	23-Feb-19																		
D590	FSDB -Electrical Loading Demand Calculation	60d	13-Nov-18*	11-Jan-19																		
D595	FSDB -Electrical Loading Demand Calculation - Approval	30d	12-Jan-19	10-Feb-19																		
D620	FSDB -Calculation of Total Electrical Load	60d	13-Nov-18*	11-Jan-19																		
D625	FSDB -Calculation of Total Electrical Load - Approval	30d	12-Jan-19	10-Feb-19																		
D630	FSDB -Generator Calculation	60d	22-Dec-18*	19-Feb-19																		
D640	FSDB -Fuel Tank Calculation	60d	22-Dec-18*	19-Feb-19																		
MD																						
D680	MD -Electrical Loading Demand Calculation	60d	31-Jul-18	28-Sep-18																		
D685	MD -Electrical Loading Demand Calculation - Approval	30d	29-Sep-18	28-Oct-18																		
D690	MD -Lux Level Calculation	60d	20-Sep-18	18-Nov-18																		
D695	MD -Lux Level Calculation - Approval	30d	19-Nov-18	18-Dec-18																		
D700	MD -Cable Sizing and Voltage Drop Verification	60d	26-Oct-18*	24-Dec-18																		
D705	MD -Cable Sizing and Voltage Drop Verification - Approval	30d	25-Dec-18	23-Jan-19																		
D710	MD -Generator Calculation	60d	21-Aug-18	19-Oct-18																		
D715	MD -Generator Calculation - Approval	30d	20-Oct-18	18-Nov-18																		
D720	MD -Fuel Tank Calculation	60d	21-Aug-18	19-Oct-18																		
D725	MD -Fuel Tank Calculation - Approval	30d	20-Oct-18	18-Nov-18																		
D730	MD -Cable Containment Calculation	60d	14-Nov-18*	12-Jan-19																		
D735	MD -Cable Containment Calculation - Approval	30d	13-Jan-19	11-Feb-19																		
D740	MD -Earthing Resistance Calculation	60d	26-Oct-18*	24-Dec-18																		
D745	MD -Earthing Resistance Calculation - Approval	30d	25-Dec-18	23-Jan-19																		
D750	MD -Power Factor Correction & Harmonic Current Analysis Calculation	60d	26-Oct-18*	24-Dec-18																		
D755	MD -Power Factor Correction & Harmonic Current Analysis Calculation - Apprc	30d	25-Dec-18	23-Jan-19																		
Section E - Building Services of Fire Services System																						
Tunnel & Service Gallery																						
E010	FS and Sprinkler Water Tanks Effective Volumes Calculation	60d	16-Oct-18	14-Dec-18																		
E015	FS and Sprinkler Water Tanks Effective Volumes Calculation - Approval	30d	15-Dec-18	13-Jan-19																		
E020	FS Pump Head Calculation for Tunnel	60d	14-Oct-18	12-Dec-18																		
E025	FS Pump Head Calculation for Tunnel - Approval	30d	13-Dec-18	11-Jan-19																		
E030	FS Pump Head Calculation for Services Gallery	60d	14-Oct-18	12-Dec-18																		
E035	FS Pump Head Calculation for Services Gallery - Approval	30d	13-Dec-18	11-Jan-19																		
E040	Sprinkler Pump Head Calculation for Services Gallery	60d	14-Oct-18	12-Dec-18																		

### THREE MONTHLY ROLLING PROGRAMME

HY/2017/10 TM-CLKL - Northern Connection Tunnel Buildings, Electrical and Mechanical Works

20/10/18 - 20/01/19

P6

Date	Revision	Checked	Approved
20/10/18			



ID	Activity	Days	Start	Finish	2018																		2019		
					September		October				November				December				January						
					07	24	01	08	15	22	29	05	12	19	26	03	10	17	24	31	07	14			
E045	Sprinkler Pump Head Calculation for Services Gallery - Approval	30d	13-Dec-18	11-Jan-19																					
TCB																									
E060	TCB -FS Pump Head Calculation	60d	13-Sep-18	11-Nov-18																					
E065	TCB -FS Pump Head Calculation - Approval	30d	12-Nov-18	11-Dec-18																					
E070	TCB -Sprinkler Pump Head Calculation	60d	13-Sep-18	11-Nov-18																					
E075	TCB -Sprinkler Pump Head Calculation - Approval	30d	12-Nov-18	11-Dec-18																					
E085	TCB -Battery Capacity Calculation - Approval	30d	31-Aug-18	29-Sep-18																					
ADB																									
E100	ADB -FS Pump Head Calculation	60d	13-Sep-18	11-Nov-18																					
E105	ADB -FS Pump Head Calculation - Approval	30d	12-Nov-18	11-Dec-18																					
E110	ADB -Sprinkler Pump Head Calculation	60d	13-Sep-18	11-Nov-18																					
E115	ADB -Sprinkler Pump Head Calculation - Approval	30d	12-Nov-18	11-Dec-18																					
E120	ADB -Battery Capacity Calculation	60d	29-Jul-18	26-Sep-18																					
E125	ADB -Battery Capacity Calculation - Approval	30d	27-Sep-18	26-Oct-18																					
NVB																									
E140	NVB -FS Pump Head Calculation	60d	19-Aug-18	17-Oct-18																					
E145	NVB -FS Pump Head Calculation - Approval	30d	18-Oct-18	16-Nov-18																					
E150	NVB -Sprinkler Pump Head Calculation	60d	19-Aug-18	17-Oct-18																					
E155	NVB -Sprinkler Pump Head Calculation - Approval	30d	18-Oct-18	16-Nov-18																					
SCB																									
E250	SCB -FM200 System Design Calculation	60d	22-Oct-18*	20-Dec-18																					
E255	SCB -FM200 System Design Calculation - Approval	30d	21-Dec-18	19-Jan-19																					
CEDB																									
E280	CEDB -Battery Capacity Calculation	60d	27-Nov-18*	25-Jan-19																					
E290	CEDB -FM200 System Design Calculation	60d	22-Nov-18*	20-Jan-19																					
FSDB																									
E300	FSDB -FS Pump Head Calculation	60d	28-Nov-18*	26-Jan-19																					
E310	FSDB -Sprinkler Pump Head Calculation	60d	28-Nov-18*	26-Jan-19																					
E320	FSDB -Battery Capacity Calculation	60d	28-Nov-18*	26-Jan-19																					
MD																									
E330	MD -FS Pump Head Calculation	60d	21-Aug-18	19-Oct-18																					
E335	MD -FS Pump Head Calculation - Approval	30d	20-Oct-18	18-Nov-18																					
E340	MD -Sprinkler Pump Head Calculation	60d	21-Aug-18	19-Oct-18																					
E345	MD -Sprinkler Pump Head Calculation - Approval	30d	20-Oct-18	18-Nov-18																					
E350	MD -Battery Capacity Calculation	60d	21-Aug-18	19-Oct-18																					
E355	MD -Battery Capacity Calculation - Approval	30d	20-Oct-18	18-Nov-18																					
E360	MD -FM200 System Design Calculation	60d	22-Nov-18*	20-Jan-19																					

### THREE MONTHLY ROLLING PROGRAMME

HY/2017/10 TM-CLKL - Northern Connection Tunnel Buildings, Electrical and Mechanical Works

20/10/18 - 20/01/19

P7

Date	Revision	Checked	Approved
20/10/18			

ID	Activity	Days	Start	Finish	2018																			2019		
					September		October				November				December				January							
					27	24	01	08	15	22	29	05	12	19	26	03	10	17	24	31	07	14				
Vehicular Underpass																										
E375	Vehicular Underpass -Foam system design calculation - Approval	30d	31-Aug-18	29-Sep-18																						
Section F - Building Services of Plumbing & Drainage System																										
Tunnel																										
F015	Oil Interceptor Calculation for tunnel - Approval	30d	10-Sep-18	09-Oct-18																						
F020	Water Storage Tank Calculation	60d	16-Oct-18	14-Dec-18																						
F025	Water Storage Tank Calculation - Approval	30d	15-Dec-18	13-Jan-19																						
TCB																										
F030	TCB - Pump Head Calculation	60d	13-Oct-18	11-Dec-18																						
F035	TCB - Pump Head Calculation - Approval	30d	12-Dec-18	10-Jan-19																						
F040	TCB - Pressure Vessel Calculation	60d	13-Oct-18	11-Dec-18																						
F045	TCB - Pressure Vessel Calculation - Approval	30d	12-Dec-18	10-Jan-19																						
F050	TCB - Rainwater Analysis and Pipe Work Calculation	60d	01-Aug-18	29-Sep-18																						
F055	TCB - Rainwater Analysis and Pipe Work Calculation - Approval	30d	30-Sep-18	29-Oct-18																						
F070	TCB - Hot water system capacity calculation	60d	08-Aug-18	06-Oct-18																						
F075	TCB - Hot water system capacity calculation - Approval	30d	07-Oct-18	05-Nov-18																						
ADB																										
F080	ADB - Pump Head Calculation	60d	09-Nov-18*	07-Jan-19																						
F085	ADB - Pump Head Calculation - Approval	30d	08-Jan-19	06-Feb-19																						
F090	ADB - Pressure Vessel Calculation	60d	09-Nov-18*	07-Jan-19																						
F095	ADB - Pressure Vessel Calculation - Approval	30d	08-Jan-19	06-Feb-19																						
F100	ADB - Rainwater Analysis and Pipe Work Calculation	60d	07-Oct-18	05-Dec-18																						
F105	ADB - Rainwater Analysis and Pipe Work Calculation - Approval	30d	06-Dec-18	04-Jan-19																						
F110	ADB - Hydraulic Analysis of Waste Water Systems	60d	08-Aug-18	06-Oct-18																						
F115	ADB - Hydraulic Analysis of Waste Water Systems - Approval	30d	07-Oct-18	05-Nov-18																						
F120	ADB - Hot water system capacity calculation	60d	08-Aug-18	06-Oct-18																						
F125	ADB - Hot water system capacity calculation - Approval	30d	07-Oct-18	05-Nov-18																						
F130	ADB - Drainage Sump Pumps and Pump Pits Calculation	60d	18-Oct-18	16-Dec-18																						
F135	ADB - Drainage Sump Pumps and Pump Pits Calculation - Approval	30d	17-Dec-18	15-Jan-19																						
NVB																										
F140	NVB - Pump Head Calculation	60d	18-Oct-18	16-Dec-18																						
F145	NVB - Pump Head Calculation - Approval	30d	17-Dec-18	15-Jan-19																						
F150	NVB - Pressure Vessel Calculation	60d	18-Oct-18	16-Dec-18																						
F155	NVB - Pressure Vessel Calculation - Approval	30d	17-Dec-18	15-Jan-19																						
F160	NVB - Rainwater Analysis and Pipe Work Calculation	60d	16-Aug-18	14-Oct-18																						
F165	NVB - Rainwater Analysis and Pipe Work Calculation - Approval	30d	15-Oct-18	13-Nov-18																						
CEDB																										

### THREE MONTHLY ROLLING PROGRAMME

HY/2017/10 TM-CLKL - Northern Connection Tunnel Buildings, Electrical and Mechanical Works

20/10/18 - 20/01/19

P8	Date	Revision	Checked	Approved
	20/10/18			



ID	Activity	Days	Start	Finish	2018																			2019		
					September				October				November				December				January					
					07	24	01	08	15	22	29	05	12	19	26	03	10	17	24	31	07	14				
G090	System Design for Audio Recording System	60d	15-Sep-18	13-Nov-18																						
G095	System Design for Audio Recording System - Approval	30d	14-Nov-18*	13-Dec-18																						
G100	System Design for Communication Network System System	60d	15-Sep-18	13-Nov-18																						
G105	System Design for Communication Network System System - Approval	30d	14-Nov-18*	13-Dec-18																						
G110	System Design for Building Management System	60d	24-Oct-18*	22-Dec-18																						
G115	System Design for Building Management System - Approval	30d	23-Dec-18*	21-Jan-19																						
Key Date 4A - FSD Building Substructure, Boundary Wall, and C&ED Building Substructure																										
FSD Building Substructure																										
FSD101	Trial Pits	4d	14-Jan-19	17-Jan-19																						
FSD102	Predrilling (No.1)	1d	18-Jan-19	18-Jan-19																						
FSD103	Predrilling (No.2)	1d	19-Jan-19	19-Jan-19																						
FSD110	Possess Portion XVIa	0d		28-Dec-18																						
Boundary Wall for FSD Building																										
FSD180	Possess Portion XVIb	0d		28-Dec-18																						
C&ED Building Substructure																										
CED120	Possess Portion XVa	0d		28-Dec-18																						
CED130	Possess Portion XVb	0d		28-Dec-18																						
CED140	Predrilling (No.1-6)	10d	12-Dec-18	22-Dec-18																						
CED141	Predrilling (No. 7-12)	11d	27-Dec-18	09-Jan-19																						
CED150	Socket H-Piling (No. 1-8)	11d	10-Jan-19	22-Jan-19																						
Key Date 1 - Toll Control Building (TCB) & TCSS Provision																										
Toll Control Building (TCB)																										
TCB163	Remaining portion of G/F Slab	12d	20-Oct-18	02-Nov-18																						
TCB164	Remaining portion of 1/F Slab	12d	03-Nov-18	16-Nov-18																						
TCB171	Remove 1/F Slab Formwork	2d	04-Oct-18	05-Oct-18																						
TCB172	Level 2 Columns & Scaffolding	10d	06-Oct-18	18-Oct-18																						
TCB173	Level 2 Slab	12d	15-Nov-18	28-Nov-18																						
TCB174	Remove 2/F Slab Formwork	2d	29-Nov-18	30-Nov-18																						
TCB175	Roof Columns & Scaffolding	10d	01-Dec-18	12-Dec-18																						
TCB180	Roof Slab	12d	13-Dec-18	29-Dec-18																						
TCB190	Top Roof	12d	13-Dec-18	29-Dec-18																						
TCSS Provision																										
TCB200	Blockwork Walls and Plaster (G/F)	12d	17-Nov-18	30-Nov-18																						
TCB210	ABWF Works to enable TCSS installation	90d	03-Jan-19	25-Apr-19																						
TCB231	Blockwork Walls and Plaster (1/F - East Side)	12d	01-Dec-18	14-Dec-18																						
TCB232	Blockwork Walls and Plaster (1/F - Middle Area)	12d	15-Dec-18	02-Jan-19																						
TCB233	Blockwork Walls and Plaster (1/F - West Side)	12d	03-Jan-19	16-Jan-19																						
THREE MONTHLY ROLLING PROGRAMME HY/2017/10 TM-CLKL - Northern Connection Tunnel Buildings, Electrical and Mechanical Works 20/10/18 - 20/01/19					P10															Date	Revision	Checked	Approved			
																				20/10/18						

ID	Activity	Days	Start	Finish	2018																		2019																																																																																																																																																																																																																																																																																																																																																																																																																																																																																																																																																																																																																																																																																																																																																																																																																																																																																																																																																																																																																																																																																																																																																																																																																																																																																																																									
					September		October				November				December				January																																																																																																																																																																																																																																																																																																																																																																																																																																																																																																																																																																																																																																																																																																																																																																																																																																																																																																																																																																																																																																																																																																																																																																																																																																																																																																																													
					07	24	01	08	15	22	29	05	12	19	26	03	10	17	24	31	07	14																																																																																																																																																																																																																																																																																																																																																																																																																																																																																																																																																																																																																																																																																																																																																																																																																																																																																																																																																																																																																																																																																																																																																																																																																																																																																																																										
TCB243	Blockwork Walls and Plaster (2/F - East Side)	12d	17-Jan-19	30-Jan-19																																																																																																																																																																																																																																																																																																																																																																																																																																																																																																																																																																																																																																																																																																																																																																																																																																																																																																																																																																																																																																																																																																																																																																																																																																																																																																																																												

### THREE MONTHLY ROLLING PROGRAMME

HY/2017/10 TM-CLKL - Northern Connection Tunnel Buildings, Electrical and Mechanical Works

20/10/18 - 20/01/19

P11

Date	Revision	Checked	Approved
20/10/18			





ID	Activity	Days	Start	Finish	2018																			2019		
					September		October				November				December				January							
					7	24	01	08	15	22	29	05	12	19	26	03	10	17	24	31	07	14				
E&M Works																										
EPR120	Blockwork Wall	12d	20-Oct-18	02-Nov-18																						
EPR130	E&M Installation	90d	12-Dec-18	03-Apr-19																						
PR151	ABWF Works	78d	03-Nov-18*	09-Feb-19																						
Approach Roads																										
Under Portions IX, XI, XX																										
AR130	Cabling works	238d	07-Jan-19*	25-Oct-19																						
Under Portion X																										
AR160	Access Portions X	0d		01-Jan-19																						
AR180	Cabling works in portion X	260d	02-Jan-19	15-Nov-19																						
AR190	Road lighting installation & termination in portion X	260d	16-Jan-19	29-Nov-19																						
Key Date 7A - E&M Works for Approach Roads at South Side																										
Design and Procurement																										
DP810	Tunnel and Approach Road Lighting System	206d	01-Nov-18*	15-Jul-19																						
DP820	CMCS System and ELV System	206d	01-Nov-18*	15-Jul-19																						
DP830	Electrical System	206d	01-Nov-18*	15-Jul-19																						
DP840	Building Services System	206d	01-Nov-18*	15-Jul-19																						
DP850	Plumbing and Drainage System (Tunnel and Roads)	206d	01-Nov-18*	15-Jul-19																						
DP860	Fire Services System	206d	01-Nov-18*	15-Jul-19																						
DP870	Other Related Works to enable E&M Works	206d	01-Nov-18*	15-Jul-19																						
Key Date 11 - Landscape Soft Works & Trees Protection																										
Trees Protection																										
SL190	Protection of Existing Trees	613d	06-Aug-18	28-Aug-20																						

### THREE MONTHLY ROLLING PROGRAMME

HY/2017/10 TM-CLKL - Northern Connection Tunnel Buildings, Electrical and Mechanical Works

20/10/18 - 20/01/19

P13

Date	Revision	Checked	Approved
20/10/18			

## Appendix C

# Environmental Mitigation and Enhancement Measure Implementation Schedules

(In reference to CINOTECH (2011) Agreement No.  
CE35/2011 EP Baseline Environmental Monitoring for  
Hong Kong-Zhuhai-Macao Bridge Tuen Mun-Chek Lap  
Kok Link – Investigation. Updated EM&A Manual for  
Tuen Mun-Chek Lap Kok Link)



**Contract No. HY/2017/10**  
**Tuen Mun – Chek Lap Kok Link**  
**Northern Connection Tunnel Buildings, Electrical and Mechanical Works**  
**Environmental Mitigation and Enhancement Measure Implementation Schedule**

EIA Reference	EM&A Manual Reference	Environmental Protection Measures	Location/ Timing	Implementation Agent	Relevant Standard or Requirement	Implementation Stages			Status *
						D	C	O	
Air Quality									
4.8.1	3.8	Watering of the construction sites in Lantau for 8 times/day and in Tuen Mun for 12 times/day to reduce dust emissions by 87.5% and 91.7% respectively and shall be undertaken.	All areas / throughout construction period	Contractor	TMEIA Avoid dust generation		Y		✓
4.8.1	3.8	The Contractor shall, to the satisfaction of the Engineer, install effective dust suppression measures and take such other measures as may be necessary to ensure that at the Site boundary and any nearby sensitive receiver, dust levels are kept to acceptable levels.	All areas / throughout construction period	Contractor	TMEIA Avoid dust generation		Y		✓
4.8.1	3.8	The Contractor shall not burn debris or other materials on the works areas.	All areas / throughout construction period	Contractor	TMEIA Avoid dust generation		Y		✓
4.8.1	3.8	In hot, dry or windy weather, the watering programme shall maintain all exposed road surfaces and dust sources wet.	All unpaved haul roads / throughout construction period in hot, dry or windy weather	Contractor	TMEIA Avoid smoke impacts and disturbance		Y		✓
4.8.1	3.8	Where breaking of oversize rock/concrete is required, watering shall be implemented to control dust. Water spray shall be used during the handling of fill material at the site and at active cuts, excavation and fill sites where dust is likely to be created.	All areas / throughout construction period	Contractor	TMEIA Avoid dust generation		Y		✓
4.8.1	3.8	Open dropping heights for excavated materials shall be controlled to a maximum height of 2m to minimise the fugitive dust arising from unloading.	All areas / throughout construction period	Contractor	TMEIA Avoid dust generation		Y		✓
4.8.1	3.8	During transportation by truck, materials shall not be loaded to a level higher than the side and tail boards, and shall be dampened or covered before transport.	All areas / throughout construction period	Contractor	TMEIA Avoid dust generation		Y		✓
4.8.1	3.8	Materials having the potential to create dust shall not be loaded to a level higher than the side and tail boards, and shall be covered by a clean tarpaulin. The tarpaulin shall be properly secured and shall extend at least 300mm over the edges of the side and tail boards.	All areas / throughout construction period	Contractor	TMEIA Avoid dust generation		Y		↔

Legend: D=Design, C=Construction, O=Operation

Note: Funding Agent for all mitigation measures will be the Highways Department of the Hong Kong SAR Government

**Contract No. HY/2017/10**  
**Tuen Mun – Chek Lap Kok Link**  
**Northern Connection Tunnel Buildings, Electrical and Mechanical Works**  
**Environmental Mitigation and Enhancement Measure Implementation Schedule**

EIA Reference	EM&A Manual Reference	Environmental Protection Measures	Location/ Timing	Implementation Agent	Relevant Standard or Requirement	Implementation Stages			Status *
						D	C	O	
4.8.1	3.8	No earth, mud, debris, dust and the like shall be deposited on public roads. Wheel washing facility shall be usable prior to any earthworks excavation activity on the site.	All site exits / throughout construction period	Contractor	TMEIA Avoid dust		Y		✓
4.8.1	3.8	Areas of exposed soil shall be minimised to areas in which works have been completed shall be restored as soon as is practicable.	All exposed surfaces / throughout construction period	Contractor	TMEIA Avoid dust generation		Y		✓
4.8.1	3.8	All stockpiles of aggregate or spoil shall be enclosed or covered and water applied in dry or windy condition.	All areas / throughout construction period	Contractor	TMEIA Avoid dust generation		Y		<>
4.11	Section 3	EM&A in the form of 1 hour and 24 hour dust monitoring and site audit.	All representative existing ASRs / throughout construction period	Contractor	EM&A Manual		Y		✓
<b>WATER QUALITY (LAND WORKS)</b>									
6.10	-	Wastewater from temporary site facilities should be controlled to prevent direct discharge to surface or marine waters.	All areas/ throughout construction period	Contractor	TM-EIAO		Y		✓
6.10	-	Sewage effluent and discharges from on- site kitchen facilities shall be directed to Government sewer in accordance with the requirements of the WPCO or collected for disposal offsite. The use of soakaways shall be avoided.	All areas/ throughout construction period	Contractor	TM-EIAO		Y		✓
6.10	-	Storm drainage shall be directed to storm drains via adequately designed sand/silt removal facilities such as sand traps, silt traps and sediment basins. Channels, earth bunds or sand bag barriers should be provided on site to properly direct stormwater to such silt removal facilities. Catchpits and perimeter channels should be constructed in advance of site formation works and earthworks.	All areas/ throughout construction period	Contractor	TM-EIAO		Y		✓
6.10	-	Silt removal facilities, channels and manholes shall be maintained and any deposited silt and grit shall be removed regularly, including specifically at the onset of and after each rainstorm.	All areas/ throughout construction period	Contractor	TM-EIAO		Y		✓

Legend: D=Design, C=Construction, O=Operation

Note: Funding Agent for all mitigation measures will be the Highways Department of the Hong Kong SAR Government

**Contract No. HY/2017/10**  
**Tuen Mun – Chek Lap Kok Link**  
**Northern Connection Tunnel Buildings, Electrical and Mechanical Works**  
**Environmental Mitigation and Enhancement Measure Implementation Schedule**

EIA Reference	EM&A Manual Reference	Environmental Protection Measures	Location/ Timing	Implementation Agent	Relevant Standard or Requirement	Implementation Stages			Status *
						D	C	O	
6.10	-	Temporary access roads should be surfaced with crushed stone or gravel.	All areas/ throughout construction period	Contractor	TM-EIAO		Y		✓
6.10	-	Rainwater pumped out from trenches or foundation excavations should be discharged into storm drains via silt removal facilities.	All areas/ throughout construction period	Contractor	TM-EIAO		Y		✓
6.10	-	Measures should be taken to prevent the washout of construction materials, soil, silt or debris into any drainage system.	All areas/ throughout construction period	Contractor	TM-EIAO		Y		✓
6.10	-	Open stockpiles of construction materials (e.g. aggregates and sand) on site should be covered with tarpaulin or similar fabric during rainstorms.	All areas/ throughout construction period	Contractor	TM-EIAO		Y		✓
6.10	5.8	Manholes (including any newly constructed ones) should always be adequately covered and temporarily sealed so as to prevent silt, construction materials or debris from getting into the drainage system, and to prevent storm run-off from getting into foul sewers.	All areas/ throughout construction period	Contractor	TM-EIAO		Y		✓
6.10	-	Discharges of surface run-off into foul sewers must always be prevented in order not to unduly overload the foul sewerage system.	All areas/ throughout construction period	Contractor	TM-EIAO		Y		✓
6.10	-	All vehicles and plant should be cleaned before they leave the construction site to ensure that no earth, mud or debris is deposited by them on roads. A wheel washing bay should be provided at every site exit.	All areas/ throughout construction period	Contractor	TM-EIAO		Y		✓
6.10	-	Wheel wash overflow shall be directed to silt removal facilities before being discharged to the storm drain.	All areas/ throughout construction period	Contractor	TM-EIAO		Y		✓
6.10	-	Section of construction road between the wheel washing bay and the public road should be surfaced with crushed stone or coarse gravel.	All areas/ throughout construction period	Contractor	TM-EIAO		Y		✓
6.10	-	Wastewater generated from concreting, plastering, internal decoration, cleaning work and other similar activities, shall be screened to remove large objects.	All areas/ throughout construction period	Contractor	TM-EIAO		Y		✓

Legend: D=Design, C=Construction, O=Operation

Note: Funding Agent for all mitigation measures will be the Highways Department of the Hong Kong SAR Government

**Contract No. HY/2017/10**  
**Tuen Mun – Chek Lap Kok Link**  
**Northern Connection Tunnel Buildings, Electrical and Mechanical Works**  
**Environmental Mitigation and Enhancement Measure Implementation Schedule**

EIA Reference	EM&A Manual Reference	Environmental Protection Measures	Location/ Timing	Implementation Agent	Relevant Standard or Requirement	Implementation Stages			Status *
						D	C	O	
6.10	-	Vehicle and plant servicing areas, vehicle wash bays and lubrication facilities shall be located under roofed areas. The drainage in these covered areas shall be connected to foul sewers via a petrol interceptor in accordance with the requirements of the WPCO or collected for off site disposal.	All areas/ throughout construction period	Contractor	TM-EIAO		Y		N/A
6.10	-	The Contractor shall prepare an oil / chemical cleanup plan and ensure that leakages or spillages are contained and cleaned up immediately.	All areas/ throughout construction period	Contractor	TM-EIAO		Y		✓
6.10	-	Waste oil should be collected and stored for recycling or disposal, in accordance with the Waste Disposal Ordinance.	All areas/ throughout construction period	Contractor	TM-EIAO Waste Disposal Ordinance		Y		✓
6.10	-	All fuel tanks and chemical storage areas should be provided with locks and be sited on sealed areas. The storage areas should be surrounded by bunds with a capacity equal to 110% of the storage capacity of the largest tank.	All areas/ throughout construction period	Contractor	TM-EIAO		Y		✓
6.10	-	Surface run-off from bunded areas should pass through oil/grease traps prior to discharge to the stormwater system.	All areas/ throughout construction period	Contractor	TM-EIAO		Y		✓
6.10	-	Roadside gullies to trap silt and grit shall be provided prior to discharging the stormwater into the marine environment. The sumps will be maintained and cleaned at regular intervals.	Roadside/design and operation	Design Consultant/ Contractor	TM-EIAO	Y		Y	✓
6.10	Section 11	All construction works shall be subject to routine audit to ensure implementation of all EIA recommendations and good working practice.	All areas/ throughout construction period	Contractor	EM&A Manual		Y		✓
<b>WASTE</b>									
12.6		The Contractor shall identify a coordinator for the management of waste.	Contract mobilisation	Contractor	TMEIA		Y		✓

Legend: D=Design, C=Construction, O=Operation

Note: Funding Agent for all mitigation measures will be the Highways Department of the Hong Kong SAR Government

**Contract No. HY/2017/10**  
**Tuen Mun – Chek Lap Kok Link**  
**Northern Connection Tunnel Buildings, Electrical and Mechanical Works**  
**Environmental Mitigation and Enhancement Measure Implementation Schedule**

EIA Reference	EM&A Manual Reference	Environmental Protection Measures	Location/ Timing	Implementation Agent	Relevant Standard or Requirement	Implementation Stages			Status *
						D	C	O	
12.6		The Contractor shall prepare and implement a Waste Management Plan which specifies procedures such as a ticketing system, to facilitate tracking of loads and to ensure that illegal disposal of wastes does not occur, and protocols for the maintenance of records of the quantities of wastes generated, recycled and disposed. A recording system for the amount of waste generated, recycled and disposed (locations) should be established.	Contract mobilisation	Contractor	TMEIA, Works Branch Technical Circular No. 5/99 for the Trip-ticket System for Disposal of Construction and Demolition Material		Y		✓
12.6		The Contractor shall apply for and obtain the appropriate licenses for the disposal of public fill, chemical waste and effluent discharges.	Contract mobilisation	Contractor	TMEIA, Land (Miscellaneous Provisions) Ordinance (Cap 28); Waste Disposal Ordinance (Cap 354); Dumping at Sea Ordinance (Cap 466); Water Pollution Control Ordinance.		Y		✓
12.6	8.1	Training shall be provided to workers about the concepts of site cleanliness and appropriate waste management procedures including waste reduction, reuse and recycling.	Contract Mobilisation	Contractor	TMEIA		Y		✓
12.6	8.1	The extent of cutting operation should be optimised where possible. Earth retaining structures and bored pile walls should be proposed to minimise the extent of cutting.	All areas / throughout construction period	Contractor	TMEIA		Y		✓
12.6	8.1	The site and surroundings shall be kept tidy and litter free.	All areas / throughout construction period	Contractor	TMEIA		Y		<>
12.6	8.1	No waste shall be burnt on site.	All areas / throughout construction period	Contractor	TMEIA		Y		✓

Legend: D=Design, C=Construction, O=Operation

Note: Funding Agent for all mitigation measures will be the Highways Department of the Hong Kong SAR Government

**Contract No. HY/2017/10**  
**Tuen Mun – Chek Lap Kok Link**  
**Northern Connection Tunnel Buildings, Electrical and Mechanical Works**  
**Environmental Mitigation and Enhancement Measure Implementation Schedule**

EIA Reference	EM&A Manual Reference	Environmental Protection Measures	Location/ Timing	Implementation Agent	Relevant Standard or Requirement	Implementation Stages			Status *
						D	C	O	
12.6	8.1	The Contractor shall be prohibited from disposing of C&D materials at any sensitive locations. The Contractor should propose the final disposal sites in the EMP and WMP for approval before implementation.	All areas / throughout construction period	Contractor	TMEIA		Y		✓
12.6	8.1	Stockpiled material shall be covered by tarpaulin and /or watered as appropriate to prevent windblown dust/ surface run off.	All areas / throughout construction period	Contractor	TMEIA		Y		✓
12.6	8.1	Excavated material in trucks shall be covered by tarpaulins to reduce the potential for spillage and dust generation.	All areas / throughout construction period	Contractor	TMEIA		Y		✓
12.6	8.1	Wheel washing facilities shall be used by all trucks leaving the site to prevent transfer of mud onto public roads.	All areas / throughout construction period	Contractor	TMEIA		Y		✓
12.6	8.1	Standard formwork or pre-fabrication should be used as far as practicable so as to minimise the C&D materials arising. The use of more durable formwork/plastic facing for construction works should be considered. The use of wooden hoardings should be avoided and metal hoarding should be used to facilitate recycling. Purchasing of construction materials should avoid over-ordering and wastage.	All areas / throughout construction period	Contractor	TMEIA		Y		✓
12.6	8.1	The Contractor should recycle as many C&D materials (this is a waste section) as possible on-site. The public fill and C&D waste should be segregated and stored in separate containers or skips to facilitate the reuse or recycling of materials and proper disposal. Where practicable, the concrete and masonry should be crushed and used as fill materials. Steel reinforcement bar should be collected for use by scrap steel mills. Different areas of the sites should be considered for segregation and storage activities.	All areas / throughout construction period	Contractor	TMEIA		Y		✓
12.6	8.1	All falsework will be steel instead of wood.	All areas / throughout construction period	Contractor	TMEIA		Y		✓

Legend: D=Design, C=Construction, O=Operation

Note: Funding Agent for all mitigation measures will be the Highways Department of the Hong Kong SAR Government



**Contract No. HY/2017/10**  
**Tuen Mun – Chek Lap Kok Link**  
**Northern Connection Tunnel Buildings, Electrical and Mechanical Works**  
**Environmental Mitigation and Enhancement Measure Implementation Schedule**

EIA Reference	EM&A Manual Reference	Environmental Protection Measures	Location/ Timing	Implementation Agent	Relevant Standard or Requirement	Implementation Stages			Status *
						D	C	O	
12.6	8.1	Chemical waste producers should register with the EPD. Chemical waste should be handled in accordance with the Code of Practice on the Packaging, Handling and Storage of Chemical Wastes as follows:  <i>f</i> suitable for the substance to be held, resistant to corrosion, maintained in good conditions and securely closed; <i>f</i> Having a capacity of <450L unless the specifications have been approved by the EPD; and w Chinese according to the instructions prescribed in Schedule 2 of the Regulations. <i>f</i> Clearly labelled and used solely for the storage of chemical wastes; <i>f</i> Enclosed with at least 3 sides; <i>f</i> Impermeable floor and bund with capacity to accommodate 110% of the volume of the largest container or 20% by volume of the chemical waste stored in the area, whichever is greatest; <i>f</i> Adequate ventilation; <i>f</i> Sufficiently covered to prevent rainfall entering (water collected within the bund must be tested and disposed of as chemical waste, if necessary); and <i>f</i> Incompatible materials are adequately separated.	All areas / throughout construction period	Contractor	TMEIA		Y		<>
12.6	8.1	Waste oils, chemicals or solvents shall not be disposed of to drain,	All areas / throughout construction period	Contractor	TMEIA		Y		✓
12.6	8.1	Adequate numbers of portable toilets should be provided for on-site workers. Portable toilets should be maintained in reasonable states, which will not deter the workers from utilising them.	All areas / throughout construction period	Contractor	TMEIA		Y		✓

Legend: D=Design, C=Construction, O=Operation

Note: Funding Agent for all mitigation measures will be the Highways Department of the Hong Kong SAR Government

**Contract No. HY/2017/10**  
**Tuen Mun – Chek Lap Kok Link**  
**Northern Connection Tunnel Buildings, Electrical and Mechanical Works**  
**Environmental Mitigation and Enhancement Measure Implementation Schedule**

EIA Reference	EM&A Manual Reference	Environmental Protection Measures	Location/ Timing	Implementation Agent	Relevant Standard or Requirement	Implementation Stages			Status *
						D	C	O	
12.6	8.1	Night soil should be regularly collected by licensed collectors.	All areas / throughout construction period	Contractor	TMEIA		Y		N/A
12.6	8.1	General refuse arising on-site should be stored in enclosed bins or compaction units separately from C&D and chemical wastes. Sufficient dustbins shall be provided for storage of waste as required under the Public Cleansing and Prevention of Nuisances By-laws. In addition, general refuse shall be cleared daily and shall be disposed of to the nearest licensed landfill or refuse transfer station. Burning of refuse on construction sites is prohibited.	All areas / throughout construction period	Contractor	TMEIA		Y		✓
12.6	8.1	All waste containers shall be in a secure area on hardstanding;	All areas / throughout construction period	Contractor	TMEIA		Y		✓
12.6	8.1	Office wastes can be reduced by recycling of paper if such volume is sufficiently large to warrant collection. Participation in a local collection scheme by the Contractor should be advocated. Waste separation facilities for paper, aluminium cans, plastic bottles, etc should be provided on-site.	Site Offices/ throughout construction period	Contractor	TMEIA		Y		✓
12.6	Section 8	EM&A of waste handling, storage, transportation, disposal procedures and documentation through the site audit programme shall be undertaken.	All areas / throughout construction period	Contractor	EM&A Manual		Y		✓
<b>LANDSCAPE AND VISUAL</b>									
10.9	7.6	Existing trees on boundary of the Project Area shall be carefully protected during construction. Detailed Tree Protection Specification shall be provided in the Contract Specification. Under this specification, the Contractor shall be required to submit, for approval, a detailed working method statement for the protection of trees prior to undertaking any works adjacent to all retained trees, including trees in contractor's works areas (Tree protection measures will be detailed at Tree Removal Application Stage) (CM1)	All areas/detailed design/ during construction	Design Consultant/ Contractor	TMEIA	Y	Y		N/A

Legend: D=Design, C=Construction, O=Operation

Note: Funding Agent for all mitigation measures will be the Highways Department of the Hong Kong SAR Government

**Contract No. HY/2017/10**  
**Tuen Mun – Chek Lap Kok Link**  
**Northern Connection Tunnel Buildings, Electrical and Mechanical Works**  
**Environmental Mitigation and Enhancement Measure Implementation Schedule**

EIA Reference	EM&A Manual Reference	Environmental Protection Measures	Location/ Timing	Implementation Agent	Relevant Standard or Requirement	Implementation Stages			Status *
						D	C	O	
10.9	7.6	Trees unavoidably affected by the works shall be transplanted where practical. Trees will be transplanted straight to their final receptor site and not held in a temporary nursery. A detailed Tree Transplanting Specification shall be provided in the Contract Specification. Sufficient time for necessary tree root and crown preparation periods shall be allowed in the project programme (CM2)	All areas/detailed design/ during construction	Design Consultant/ Contractor	TMEIA	Y	Y		N/A
10.9	7.6	Hillside and roadside screen planting to proposed roads, associated structures and slope works (CM3)	All areas/detailed design/ during construction/post construction	Design Consultant/ Contractor	TMEIA	Y	Y		N/A
10.9	7.6	Hydroseeding or sheeting of soil stockpiles with visually unobtrusive material (in earth tone) (CM4)	All areas/detailed design/ during construction/post construction	Design Consultant/ Contractor	TMEIA	Y	Y		✓
10.9	7.6	Screening of construction works by hoardings around works area in visually unobtrusive colours, to screen works (CM5)	All areas/detailed design/ during construction	Design Consultant/ Contractor	TMEIA	Y	Y		N/A
10.9	7.6	Control night-time lighting and glare by hooding all lights (CM6)	All areas/detailed design/ during construction	Design Consultant/ Contractor	TMEIA	Y	Y		N/A
10.9	7.6	Ensure no run-off into water body adjacent to the Project Area (CM7)	All areas/detailed design/ during construction	Design Consultant/ Contractor	TMEIA	Y	Y		N/A
10.9	7.6	Avoidance of excessive height and bulk of buildings and structures (CM8)	All areas/detailed design/ during construction	Design Consultant/ Contractor	TMEIA	Y	Y		✓
10.9	7.6	Recycle/ Reuse all felled trees and vegetation, e.g. mulching (CM9)	All areas/detailed design/ during construction	Design Consultant/ Contractor	TMEIA	Y	Y		N/A
10.9	7.6	Compensatory tree planting shall be provided to the satisfaction of relevant Government departments. Required numbers and locations of compensatory trees shall be determined and agreed separately with Government during the Tree Felling Application process under ETWBTC 3/2006 (CM10)	All areas/detailed design/ during construction	Design Consultant/ Contractor	TMEIA	Y	Y		N/A

Legend: D=Design, C=Construction, O=Operation

Note: Funding Agent for all mitigation measures will be the Highways Department of the Hong Kong SAR Government

**Contract No. HY/2017/10**  
**Tuen Mun – Chek Lap Kok Link**  
**Northern Connection Tunnel Buildings, Electrical and Mechanical Works**  
**Environmental Mitigation and Enhancement Measure Implementation Schedule**

EIA Reference	EM&A Manual Reference	Environmental Protection Measures	Location/ Timing	Implementation Agent	Relevant Standard or Requirement	Implementation Stages			Status *
						D	C	O	
10.9	7.6	Re-vegetation of affected woodland/shrubland with native species (OM1)	All areas/detailed design/ during construction/ during operation	Design Consultant/ Contractor	TMEIA	Y	Y	Y	n/a. To be implemented by AFCD/HyD/L CSD
10.9	7.6	Tall buffer screen tree / shrub / climber planting should be incorporated to soften hard engineering structures and facilities (OM2)	All areas/detailed design/ during construction/ during operation	Design Consultant/ Contractor	TMEIA	Y	Y	Y	n/a. To be implemented by AFCD/HyD/L CSD
10.9	7.6	Streetscape elements (e.g. paving, signage, street furniture, lighting etc.) shall be sensitively designed in a manner that responds to the local context, and minimises potential negative landscape and visual impacts. Lighting units should be directional and minimise unnecessary light spill (OM3)	All areas/detailed design/ during construction / during operation	Design Consultant/ Contractor	TMEIA	Y	Y	Y	n/a. To be implemented by HyD/LCS D
10.9	7.6	Structure, ornamental tree / shrub / climber planting should be provided along roadside amenity strips, central dividers and newly formed slopes to enhance the townscape quality and further greenery enhancement (OM4)	All areas/detailed design/ during construction / during operation	Design Consultant/ Contractor	TMEIA	Y	Y	Y	n/a. To be implemented by HyD/LCS D
10.9	7.6	Aesthetically pleasing design (visually unobtrusive and non-reflective) as regard to the form, material and finishes	All areas/detailed design/ during construction / during operation	Design Consultant/ Contractor	TMEIA	Y	Y	Y	n/a. To be implemented by HyD

\* Remarks:

Legend: D=Design, C=Construction, O=Operation

Note: Funding Agent for all mitigation measures will be the Highways Department of the Hong Kong SAR Government

*Contract No. HY/2017/10*  
*Tuen Mun – Chek Lap Kok Link*  
*Northern Connection Tunnel Buildings, Electrical and Mechanical Works*  
*Environmental Mitigation and Enhancement Measure Implementation Schedule*

EIA Reference	EM&A Manual Reference	Environmental Protection Measures	Location/ Timing	Implementation Agent	Relevant Standard or Requirement	Implementation Stages			Status *
						D	C	O	
✓		Compliance of Mitigation Measures							
<>		Compliance of Mitigation but need improvement							
x		Non-compliance of Mitigation Measures							
▲		Non-compliance of Mitigation Measures but rectified by Contractor							
Δ		Deficiency of Mitigation Measures but rectified by Contractor							
N/A		Not Applicable in Reporting Period							

Legend: D=Design, C=Construction, O=Operation

Note: Funding Agent for all mitigation measures will be the Highways Department of the Hong Kong SAR Government

## Appendix D

# Summary of Action and Limit Levels



**Table D1**      *Action and Limit Levels for 1-hour and 24-hour TSP*

Parameters	Action	Limit
24 Hour TSP Level in $\mu\text{g}/\text{m}^3$	ASR1 = 213	260
	ASR5 = 238	
	AQMS1 = 213	
	ASR6 = 238	
	ASR10 = 214	
1 Hour TSP Level in $\mu\text{g} / \text{m}^3$	ASR1 = 331	500
	ASR5 = 340	
	AQMS1 = 335	
	ASR6 = 338	
	ASR10 = 337	

## Appendix E

# Event Action Plan

**Appendix E1**      **Event/ Action Plan for Air Quality**

ACTION				
EVENT	ET <sup>(1)</sup>	IEC <sup>(1)</sup>	ER <sup>(1)</sup>	Contractor
<b>Action Level</b>				
1. Exceedance for one sample	1. Identify the source. 2. Inform the IEC and the ER. 3. Repeat measurement to confirm finding. 4. Increase monitoring frequency to daily.	1. Check monitoring data submitted by the ET. 2. Check Contractor's working method.	1. Notify Contractor.	1. Rectify any unacceptable practice 2. Amend working methods if appropriate
2. Exceedance for two or more consecutive samples	1. Identify the source. 2. Inform the IEC and the ER. 3. Repeat measurements to confirm findings. 4. Increase monitoring frequency to daily. 5. Discuss with the IEC and the Contractor on remedial actions required. 6. If exceedance continues, arrange meeting with the IEC and the ER. 7. If exceedance stops, cease additional monitoring.	1. Check monitoring data submitted by the ET. 2. Check the Contractor's working method. 3. Discuss with the ET and the Contractor on possible remedial measures. 4. Advise the ER on the effectiveness of the proposed remedial measures. 5. Supervise implementation of remedial measures.	1. Confirm receipt of notification of failure in writing. 2. Notify the Contractor. 3. Ensure remedial measures properly implemented.	1. Submit proposals for remedial actions to IEC within 3 working days of notification 2. Implement the agreed proposals 3. Amend proposal if appropriate

ACTION				
EVENT	ET <sup>(1)</sup>	IEC <sup>(1)</sup>	ER <sup>(1)</sup>	Contractor
<b>Limit Level</b>				
1. Exceedance for one sample	1. Identify the source. 2. Inform the ER and the DEP. 3. Repeat measurement to confirm finding. 4. Increase monitoring frequency to daily. 5. Assess effectiveness of Contractor's remedial actions and keep the IEC, the DEP and the ER informed of the results.	1. Check monitoring data submitted by the ET. 2. Check Contractor's working method. 3. Discuss with the ET and the Contractor on possible remedial measures. 4. Advise the ER on the effectiveness of the proposed remedial measures. 5. Supervise implementation of remedial measures.	1. Confirm receipt of notification of failure in writing. 2. Notify the Contractor. 3. Ensure remedial measures are properly implemented.	1. Take immediate action to avoid further exceedance 2. Submit proposals for remedial actions to IEC within 3 working days of notification 3. Implement the agreed proposals 4. Amend proposal if appropriate
2. Exceedance for two or more consecutive samples	1. Notify the IEC, the ER, the DEP and the Contractor. 2. Identify the source. 3. Repeat measurements to confirm findings. 4. Increase monitoring frequency to daily. 5. Carry out analysis of the Contractor's working procedures to determine possible mitigation to be implemented. 6. Arrange meeting with the IEC and the ER to discuss the remedial actions to be taken. 7. Assess effectiveness of the Contractor's remedial actions	1. Discuss amongst the ER, ET and the Contractor on the potential remedial actions. 2. Review the Contractor's remedial actions whenever necessary to assure their effectiveness and advise the ER accordingly. 3. Supervise the implementation of remedial measures.	1. Confirm receipt of notification of failure in writing. 2. Notify the Contractor. 3. In consultation with the IEC, agree with the Contractor on the remedial measures to be implemented. 4. Ensure remedial measures are properly implemented. 5. If exceedance continues, consider what activity of the work is responsible and instruct the Contractor to stop that activity of work until the exceedance is abated.	1. Take immediate action to avoid further exceedance. 2. Submit proposals for remedial actions to IEC within 3 working days of notification. 3. Implement the agreed proposals. 4. Resubmit proposals if problem still not under control. 5. Stop the relevant activity of works as determined by the ER until the exceedance is abated.

---

and keep the IEC, the DEP and  
the ER informed of the results.

8. If the exceedance stops, cease  
additional monitoring.

---

Abbreviations: ET – Environmental Team, IEC – Independent Environmental Checker, ER – Engineer's Representative, DEP – Director of Environmental Protection

## Appendix F

# Monthly Summary of Waste Flow Table



Contract No. : HY/2017/10

**Tuen Mun Chek Lap Kok Link – Northern Connection Tunnel Buildings, Electrical and Mechanical Works**

**Monthly Summary Waste Flow Table for 2018 (Year)**

Month\Material	Actual Quantities of Inert C&D Materials Generation						Actual Quantities of C&D wastes Generation		Actual Quantities of Recyclables Generation			
	Total Quantity Generated	Hard Rock and Large Broken Concrete	Reused in the Contract	Reused in other Projects	Disposed as Public Fills	Imported Fill	Chemical Waste	General Refuse	Metals	Felled trees	Paper/ cardboard packaging	Plastics
Unit	('000m <sup>3</sup> )	('000m <sup>3</sup> )	('000m <sup>3</sup> )	('000m <sup>3</sup> )	('000m <sup>3</sup> )	('000m <sup>3</sup> )	('000Kg)	('000Kg)	('000Kg)	('000Kg)	('000Kg)	('000Kg)
Jan	-	0.000	-	-	-	-	-	-	-	-	-	-
Feb	-	0.000	-	-	-	-	-	-	-	-	-	-
Mar	-	0.000	-	-	-	-	-	-	-	-	-	-
Apr	-	0.000	-	-	-	-	-	-	-	-	-	-
May	0.397	0.000	-	0.397	-	-	-	-	-	-	-	-
Jun	2.085	0.008	-	-	2.085	-	-	3.750	-	-	-	-
<b>SUB-TOTAL</b>	<b>2.482</b>	<b>0.008</b>	<b>0.000</b>	<b>0.397</b>	<b>2.085</b>	<b>0.000</b>	-	<b>3.750</b>	-	<b>0.000</b>	-	-
Jul	0.830	0.050	-	-	0.830	-	-	15.190	-	-	-	-
Aug	0.825	0.046	-	-	0.825	-	-	103.420	-	-	-	-
Sep	0.205	0.000	-	-	0.205	-	-	22.150	-	-	-	-
Oct	0.720	0.000	-	-	0.720	-	-	26.280	-	-	0.063	-
Nov	-	-	-	-	-	-	-	-	-	-	-	-
Dec	-	-	-	-	-	-	-	-	-	-	-	-
<b>TOTAL</b>	<b>5.062</b>	<b>0.104</b>	-	<b>0.397</b>	<b>4.665</b>	-	-	<b>170.790</b>	-	-	<b>0.063</b>	-

**Notes :**

- 1 - The waste flow table shall also include C&D materials that are specified in the Contract to be imported for use at the Site.
- 2 - Plastics refer to plastic bottles/containers, plastic sheets/foam from packaging material.
- 3 - Broken concrete for recycling into aggregates.
- 4 - Assumed 5 kg per damaged water-filled barrier.
- 5 - Disposed as Public Fills includes Hard Rock and Large Broken Concrete.

## Appendix G

# Cumulative Statistics on Exceedances, Complaints, Notifications of Summons and Successful Prosecutions

**Appendix G1 Cumulative Statistics on Exceedances**

		Total No. recorded in this reporting month	Total No. recorded since project commencement
1-Hr TSP	Action	3	7
	Limit	0	1
24-Hr TSP	Action	0	0
	Limit	0	0

**Appendix G2 Cumulative Statistics on Complaints, Notifications of Summons and Successful Prosecutions**

Reporting Period	Cumulative Statistics		
	Complaints	Notifications of Summons	Successful Prosecutions
This Reporting Month (CMEVF 2018)	0	0	0
Total No. received since project commencement	0	0	0

Email  
message

Environmental  
Resources  
Management

**To** Ramboll Hong Kong Limited (ENPO)

**From** ERM- Hong Kong, Limited

**Ref/Project number** Contract No. HY/2017/10  
Tuen Mun – Chek Lap Kok Link – Northern  
Connection Tunnel Buildings, Electrical and  
Mechanical Works

**Subject** Notification of Exceedance for Air Quality  
Impact Monitoring

**Date** 23 October 2018

2507,  
25/F One Harbourfront,  
18 Tak Fung Street,  
Hung Hom, Hong Kong  
Telephone: (852) 2271 3113  
Facsimile: (852) 2723 5660  
E-mail: jasmine.ng@erm.com



---

Dear Sir/ Madam,

Please find attached the Notification of Exceedance (NOE) of the following  
Log no.:

Action Level Exceedance  
0215660\_4 October 2018\_1hrTSP\_Station ASR1

A total of one (1) exceedance was recorded on 4 October 2018.

Regards,

Dr Jasmine Ng  
*Environmental Team Leader*

---

**CONFIDENTIALITY NOTICE**

This facsimile transmission is intended only for the use of the addressee and is confidential. If you are not the addressee it may be unlawful for you to read, copy, distribute, disclose or otherwise use the information in this facsimile. If you are not the intended recipient, please telephone or fax us immediately.

---



ERM-Hong Kong, Limited

CONTRACT NO. HY/2017/10

TUEN MUN – CHEK LAP KOK LINK –  
NORTHERN CONNECTION TUNNEL BUILDINGS,  
ELECTRICAL AND MECHANICAL WORKS

*Air Quality Impact Monitoring*

**Notification of Exceedance**

Log No.	<p style="text-align: center;"><b><u>Action Level Exceedance</u></b>  <b>0215660_4 October 2018_1hrTSP_Station ASR1</b></p> <p style="text-align: center;"><b>[Total No. of Exceedances = 1]</b></p>	
Date	<p style="text-align: center;">4 October 2018 (Measured)  23 October 2018 (Results obtained from ENPO Website)</p>	
Monitoring Station	ASR1, ASR5, ASR6, ASR10, AQMS1	
Parameter(s) with Exceedance(s)	1-hr TSP	
Action Levels	1-hr TSP ( $\mu\text{g}/\text{m}^3$ )	ASR1 = 331 ASR5 = 340 ASR6 = 338 ASR10 = 335 AQMS1 = 337
Limit Levels	1-hr TSP ( $\mu\text{g}/\text{m}^3$ )	500
Measured Levels	Refer to the attached data sheet.	
Works Undertaken (at the time of monitoring event)	Works undertaken under this Contract on 4 October 2018 included: <ul style="list-style-type: none"> <li>Socket H-piling at Administration Building.</li> </ul>	
Possible Reason for Action or Limit Level Exceedance(s)	<p>The exceedance is unlikely to be due to the Project, in view of the following:</p> <ul style="list-style-type: none"> <li>Apart from exceedances of 1 hour TSP (14:11 - 15:11) at ASR1, other 1hr-TSP levels and all 24-hr TSP at all monitoring stations were in compliance with the Action and Limit Levels on the same day.</li> <li>Watering record provided by the Contractor was reviewed. Watering was maintained on unpaved and dry road on 4 October 2018 (<i>refer to Contractor's Photo and watering record</i>).</li> <li>According to ET's site inspection on 5 October 2018, no particular findings was observed at works area near ASR1 (<i>refer to ET's Site Inspection Photo</i>). Unpaved roads were in wet condition.</li> </ul> <p>Based on the above, the exceedances are unlikely to be due to the Project.</p>	
Actions Taken/ To Be Taken	The Contractor has been reminded to ensure all dust suppression measures are implemented at the site area including water spraying at unpaved road. The ET will monitor for future trends in exceedances.	
Dust Remarks	The monitoring results on 4 October 2018 and locations of air quality monitoring stations are attached. Works area under this Contract is attached. The attached wind data on 4 October 2018 is sourced from <i>Contract No. HY/2012/08</i> for reference.	

Results of Air Quality Monitoring

Project	Works	Date (yyyy-mm-dd)	Station	Time (hh:mm, 24hour)	Parameter	Results	Unit
TMCLKL	HY/2012/08	2018/10/04	AQMS1	14:22	1-hour TSP	121	ug/m3
TMCLKL	HY/2012/08	2018/10/04	AQMS1	15:24	1-hour TSP	111	ug/m3
TMCLKL	HY/2012/08	2018/10/04	AQMS1	16:25	1-hour TSP	61	ug/m3
TMCLKL	HY/2012/08	2018/10/04	ASR1	14:11	1-hour TSP	340	ug/m3
TMCLKL	HY/2012/08	2018/10/04	ASR1	15:13	1-hour TSP	267	ug/m3
TMCLKL	HY/2012/08	2018/10/04	ASR1	16:15	1-hour TSP	76	ug/m3
TMCLKL	HY/2012/08	2018/10/04	ASR10	13:35	1-hour TSP	83	ug/m3
TMCLKL	HY/2012/08	2018/10/04	ASR10	14:37	1-hour TSP	78	ug/m3
TMCLKL	HY/2012/08	2018/10/04	ASR10	16:41	1-hour TSP	56	ug/m3
TMCLKL	HY/2012/08	2018/10/04	ASR5	13:58	1-hour TSP	228	ug/m3
TMCLKL	HY/2012/08	2018/10/04	ASR5	15:00	1-hour TSP	210	ug/m3
TMCLKL	HY/2012/08	2018/10/04	ASR5	16:02	1-hour TSP	94	ug/m3
TMCLKL	HY/2012/08	2018/10/04	ASR6	13:47	1-hour TSP	183	ug/m3
TMCLKL	HY/2012/08	2018/10/04	ASR6	14:49	1-hour TSP	156	ug/m3
TMCLKL	HY/2012/08	2018/10/04	ASR6	15:51	1-hour TSP	81	ug/m3
TMCLKL	HY/2012/08	2018/10/04	AQMS1	17:28	24-hour TSP	65	ug/m3
TMCLKL	HY/2012/08	2018/10/04	ASR1	17:17	24-hour TSP	125	ug/m3
TMCLKL	HY/2012/08	2018/10/04	ASR10	16:41	24-hour TSP	86	ug/m3
TMCLKL	HY/2012/08	2018/10/04	ASR5	17:04	24-hour TSP	137	ug/m3
TMCLKL	HY/2012/08	2018/10/04	ASR6	16:53	24-hour TSP	112	ug/m3

Note: Indicates Exceedance of Action Level  
Indicates Exceedance of Limit Level

Meteorological Data for Impact Monitoring in the reporting period*			
Date (yy-mm-dd)	Time (24hrs)	Average of Wind Speed (m/s)	Average of Wind Director (degree)
18/10/04	0:00	0.9	100
18/10/04	1:00	0.4	79
18/10/04	2:00	0.4	98
18/10/04	3:00	0.9	343
18/10/04	4:00	1.3	342
18/10/04	5:00	0.4	340
18/10/04	6:00	1.3	313
18/10/04	7:00	1.3	308
18/10/04	8:00	1.3	319
18/10/04	9:00	1.8	348
18/10/04	10:00	1.8	14
18/10/04	11:00	1.8	341
18/10/04	12:00	1.8	315
18/10/04	13:00	1.8	330
18/10/04	14:00	2.2	283
18/10/04	15:00	2.2	302
18/10/04	16:00	2.2	302
18/10/04	17:00	2.2	281
18/10/04	18:00	1.3	318
18/10/04	19:00	1.8	310
18/10/04	20:00	0.9	306
18/10/04	21:00	0.9	317
18/10/04	22:00	1.3	320
18/10/04	23:00	0.9	311

\*Wind data is sourced from Contract No. HY/2012/08 Tuen Mun - Chek Lap Kok Link - Northern Connection Sub-sea Tunnel Section



***PHOTO BY CONTRACTOR ON 4 OCTOBER 2018***

Photo 1 - Watering of unpaved roads to maintain a wet condition (4 October 2018)



***PHOTO BY ET ON 5 OCTOBER 2018***

Photo 2 - Unpaved roads were maintained in a wet condition (5 October 2018)

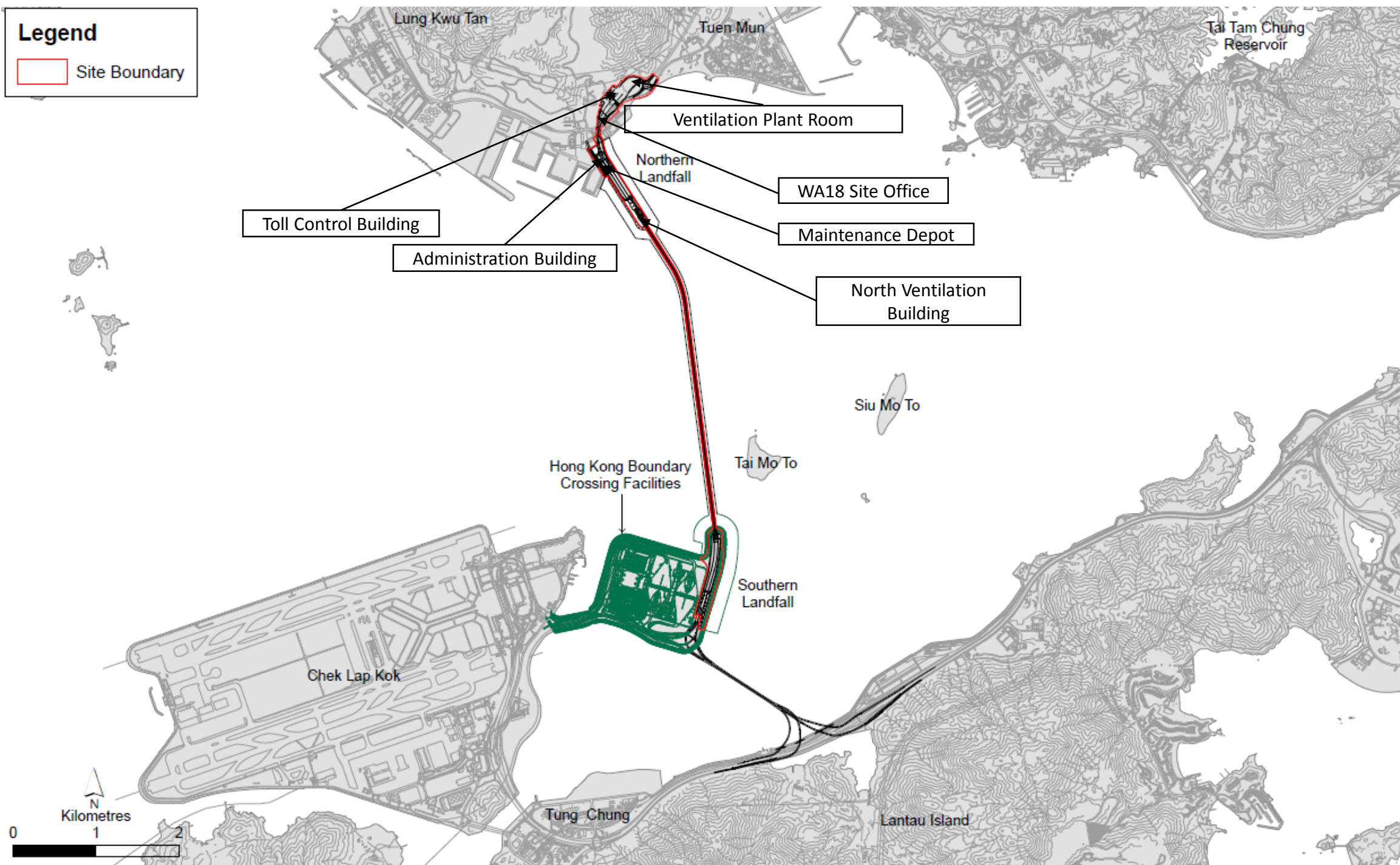


# WATERING RECORD ON 4 OCTOBER 2018

Date	Location	
4 <sup>th</sup> Oct	AdB 8 MD	
Time Period	Watering time	Signature
7-8		
8-9	✓ 8:15	Toby
9-10	✓✓ 9:01 9:47	Toby
10-11	✓ 10:40	Toby
11-12	✓ 11:36	Toby
12-13	✓ 12:56	Toby
13-14	✓✓ 13:30 13:59	Toby
14-15	✓ 14:50	Toby
15-16	✓ 15:48	Toby
16-17	✓ 16:45	Toby
17-18	✓ 18:00	Toby
18-19		

# Legend

Site Boundary





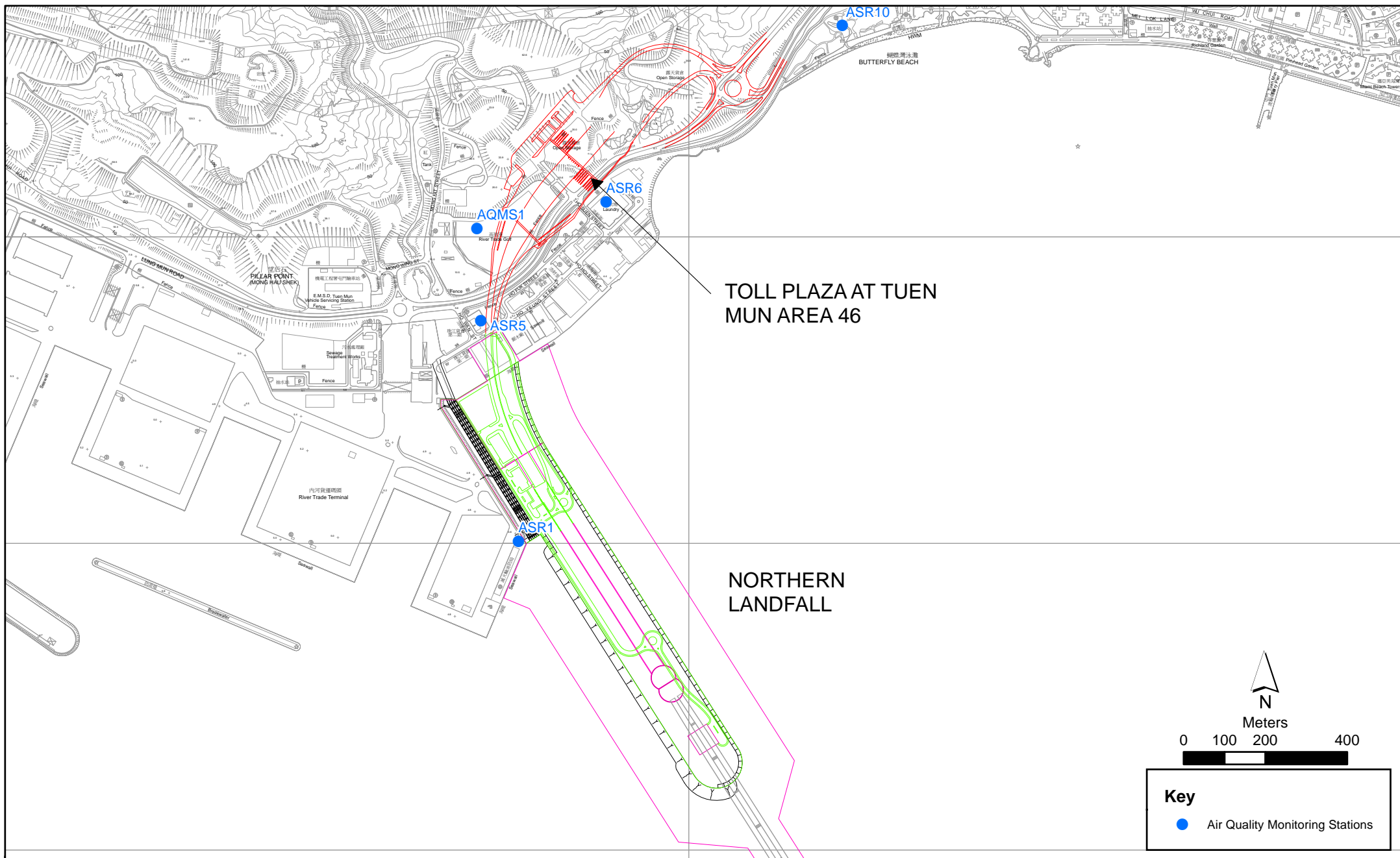


Figure 2.1

Air Quality Monitoring Stations for the Enhanced TSP Monitoring  
(Source: Adopted from Contract No. HY/2012/08 Tuen Mun-Chek Lap Kok Link -  
Northern Connection Sub-sea Tunnel Section)

File: T:\GIS\CONTRACT\0212330\Mxd\0212330\_ASR\_for\_Enhanced\_TSP\_monitoring.mxd  
Date: 21/2/2014

Environmental  
Resources  
Management



Email  
message

Environmental  
Resources  
Management

**To** Ramboll Hong Kong Limited (ENPO)

**From** ERM- Hong Kong, Limited

**Ref/Project number** Contract No. HY/2017/10  
Tuen Mun – Chek Lap Kok Link – Northern  
Connection Tunnel Buildings, Electrical and  
Mechanical Works

**Subject** Notification of Exceedance for Air Quality  
Impact Monitoring

**Date** 24 October 2018

2507,  
25/F One Harbourfront,  
18 Tak Fung Street,  
Hung Hom, Hong Kong  
Telephone: (852) 2271 3113  
Facsimile: (852) 2723 5660  
E-mail: jasmine.ng@erm.com



---

Dear Sir/ Madam,

Please find attached the Notification of Exceedance (NOE) of the following  
Log no.:

Action Level Exceedance  
0463091\_10 October 2018\_1hrTSP\_Station ASR1

A total of one (1) exceedance was recorded on 10 October 2018.

Regards,

Dr Jasmine Ng  
*Environmental Team Leader*

---

**CONFIDENTIALITY NOTICE**

This facsimile transmission is intended only for the use of the addressee and is confidential. If you are not the addressee it may be unlawful for you to read, copy, distribute, disclose or otherwise use the information in this facsimile. If you are not the intended recipient, please telephone or fax us immediately.

---



ERM-Hong Kong, Limited

CONTRACT NO. HY/2017/10

TUEN MUN – CHEK LAP KOK LINK –  
NORTHERN CONNECTION TUNNEL BUILDINGS,  
ELECTRICAL AND MECHANICAL WORKS

*Air Quality Impact Monitoring*

**Notification of Exceedance**

Log No.	<p style="text-align: center;"><u>Action Level Exceedance</u> 0463091_10 October 2018_1hrTSP_Station ASR1</p> <p style="text-align: center;">[Total No. of Exceedances = 1]</p>	
Date	<p style="text-align: center;">10 October 2018 (Measured) 24 October 2018 (Results obtained from ENPO Website)</p>	
Monitoring Station	ASR1, ASR5, ASR6, ASR10, AQMS1	
Parameter(s) with Exceedance(s)	1-hr TSP	
Action Levels	1-hr TSP ( $\mu\text{g}/\text{m}^3$ )	ASR1 = 331 ASR5 = 340 ASR6 = 338 ASR10 = 335 AQMS1 = 337
Limit Levels	1-hr TSP ( $\mu\text{g}/\text{m}^3$ )	500
Measured Levels	Refer to the attached data sheet.	
Works Undertaken (at the time of monitoring event)	Works undertaken under this Contract on 10 October 2018 included: <ul style="list-style-type: none"> <li>Socket H-piling at Administration Building.</li> </ul>	
Possible Reason for Action or Limit Level Exceedance(s)	<p>The exceedance is unlikely to be due to the Project, in view of the following:</p> <ul style="list-style-type: none"> <li>Apart from exceedances of 1 hour TSP (13:38 - 14:38) at ASR1, other 1hr-TSP levels and all 24-hr TSP at all monitoring stations were in compliance with the Action and Limit Levels on the same day.</li> <li>Watering record provided by the Contractor was reviewed. Watering was maintained on unpaved and dry road on 10 October 2018 (<i>refer to Contractor's Photo and watering record</i>).</li> <li>According to ET's site inspection on 5 and 12 October 2018, no particular findings was observed at the works area near ASR1 (<i>refer to ET's Site Inspection Photo</i>). Unpaved roads at the works area were in wet condition.</li> </ul> <p>Based on the above, the exceedances are unlikely to be due to the Project.</p>	
Actions Taken/ To Be Taken	The Contractor has been reminded to ensure all dust suppression measures are implemented at the site area including water spraying at unpaved road. The ET will monitor for future trends in exceedances.	
Dust Remarks	The monitoring results on 10 October 2018 and locations of air quality monitoring stations are attached. Works area under this Contract is attached. The attached wind data on 10 October 2018 is sourced from <i>Contract No. HY/2012/08</i> for reference.	

Results of Air Quality Monitoring

Project	Works	Date (yyyy-mm-dd)	Station	Time (hh:mm, 24hour)	Parameter	Results	Unit
TMCLKL	HY/2012/08	2018/10/10	AQMS1	13:50	1-hour TSP	74	ug/m3
TMCLKL	HY/2012/08	2018/10/10	AQMS1	14:52	1-hour TSP	79	ug/m3
TMCLKL	HY/2012/08	2018/10/10	AQMS1	15:54	1-hour TSP	70	ug/m3
TMCLKL	HY/2012/08	2018/10/10	ASR1	13:38	1-hour TSP	451	ug/m3
TMCLKL	HY/2012/08	2018/10/10	ASR1	14:40	1-hour TSP	77	ug/m3
TMCLKL	HY/2012/08	2018/10/10	ASR1	15:42	1-hour TSP	117	ug/m3
TMCLKL	HY/2012/08	2018/10/10	ASR10	13:04	1-hour TSP	103	ug/m3
TMCLKL	HY/2012/08	2018/10/10	ASR10	14:06	1-hour TSP	106	ug/m3
TMCLKL	HY/2012/08	2018/10/10	ASR10	15:08	1-hour TSP	98	ug/m3
TMCLKL	HY/2012/08	2018/10/10	ASR5	13:26	1-hour TSP	297	ug/m3
TMCLKL	HY/2012/08	2018/10/10	ASR5	14:28	1-hour TSP	213	ug/m3
TMCLKL	HY/2012/08	2018/10/10	ASR5	15:30	1-hour TSP	156	ug/m3
TMCLKL	HY/2012/08	2018/10/10	ASR6	13:15	1-hour TSP	176	ug/m3
TMCLKL	HY/2012/08	2018/10/10	ASR6	14:17	1-hour TSP	171	ug/m3
TMCLKL	HY/2012/08	2018/10/10	ASR6	15:19	1-hour TSP	126	ug/m3
TMCLKL	HY/2012/08	2018/10/10	AQMS1	16:56	24-hour TSP	47	ug/m3
TMCLKL	HY/2012/08	2018/10/10	ASR1	16:44	24-hour TSP	75	ug/m3
TMCLKL	HY/2012/08	2018/10/10	ASR10	16:10	24-hour TSP	47	ug/m3
TMCLKL	HY/2012/08	2018/10/10	ASR5	16:32	24-hour TSP	114	ug/m3
TMCLKL	HY/2012/08	2018/10/10	ASR6	16:21	24-hour TSP	71	ug/m3

Note: Indicates Exceedance of Action Level  
Indicates Exceedance of Limit Level



Meteorological Data for Impact Monitoring in the reporting period*			
Date (yy-mm-dd)	Time (24hrs)	Average of Wind Speed (m/s)	Average of Wind Director (degree)
18/10/10	0:00	1.8	120
18/10/10	1:00	0.9	81
18/10/10	2:00	0.4	77
18/10/10	3:00	0.0	332
18/10/10	4:00	0.9	328
18/10/10	5:00	0.4	339
18/10/10	6:00	0.4	327
18/10/10	7:00	0.4	335
18/10/10	8:00	0.0	96
18/10/10	9:00	0.9	115
18/10/10	10:00	2.2	123
18/10/10	11:00	2.2	132
18/10/10	12:00	2.2	303
18/10/10	13:00	2.7	318
18/10/10	14:00	4.5	343
18/10/10	15:00	4.5	330
18/10/10	16:00	0.9	288
18/10/10	17:00	0.4	293
18/10/10	18:00	0.9	314
18/10/10	19:00	0.9	184
18/10/10	20:00	0.4	183
18/10/10	21:00	1.8	39
18/10/10	22:00	1.3	35
18/10/10	23:00	0.9	345

\*Wind data is sourced from Contract No. HY/2012/08 Tuen Mun - Chek Lap Kok Link - Northern Connection Sub-sea Tunnel Section

***PHOTO BY CONTRACTOR ON 10 OCTOBER 2018***

Photo 1 - Watering of unpaved roads to maintain a wet condition (10 October 2018)



***PHOTO BY ET ON 5 AND 12 OCTOBER 2018***

Photo 2 - Unpaved roads were maintained in a wet condition (5 October 2018)



Photo 3 - Unpaved roads were maintained in a wet condition (12 October 2018)

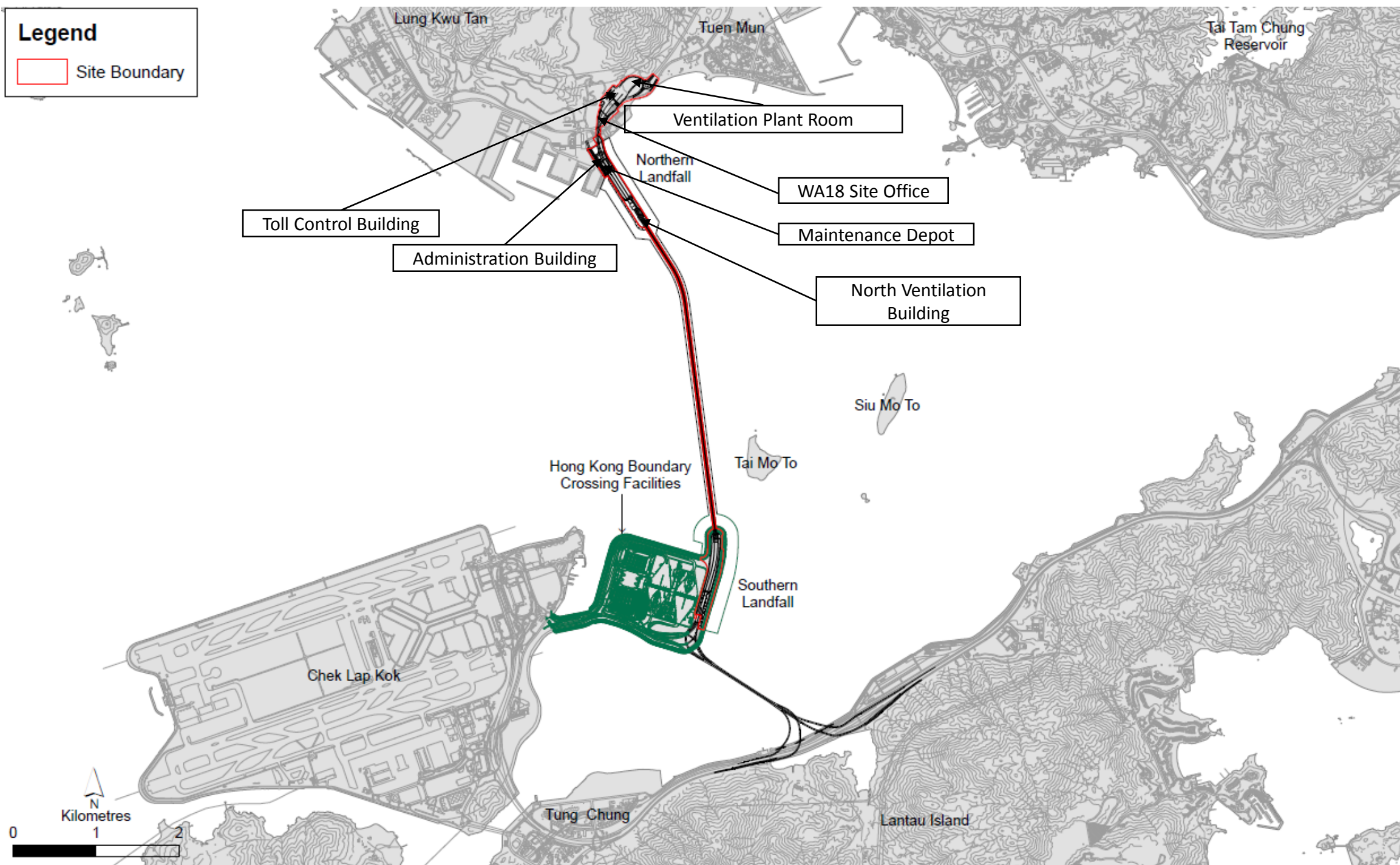


# WATERING RECORD ON 10 OCTOBER 2018

	Date	Location		
Time Period	10 <sup>th</sup> Oct	AUB & MD		
	7-8		Watering Time	Signature
	8-9	✓	8:09	tshy
	9-10	✓	9:15	tshy
	10-11	✓	10:13	tshy
	11-12	✓	11:05	11:55 tshy
	12-13	✓	12:50	tshy
	13-14	✓	13:49	tshy
	14-15	✓	14:20	14:55 tshy
	15-16	✓	15:50	tshy
	16-17	✓	16:50	tshy
	17-18	✓	17:44	tshy
	18-19			

# Legend

Site Boundary





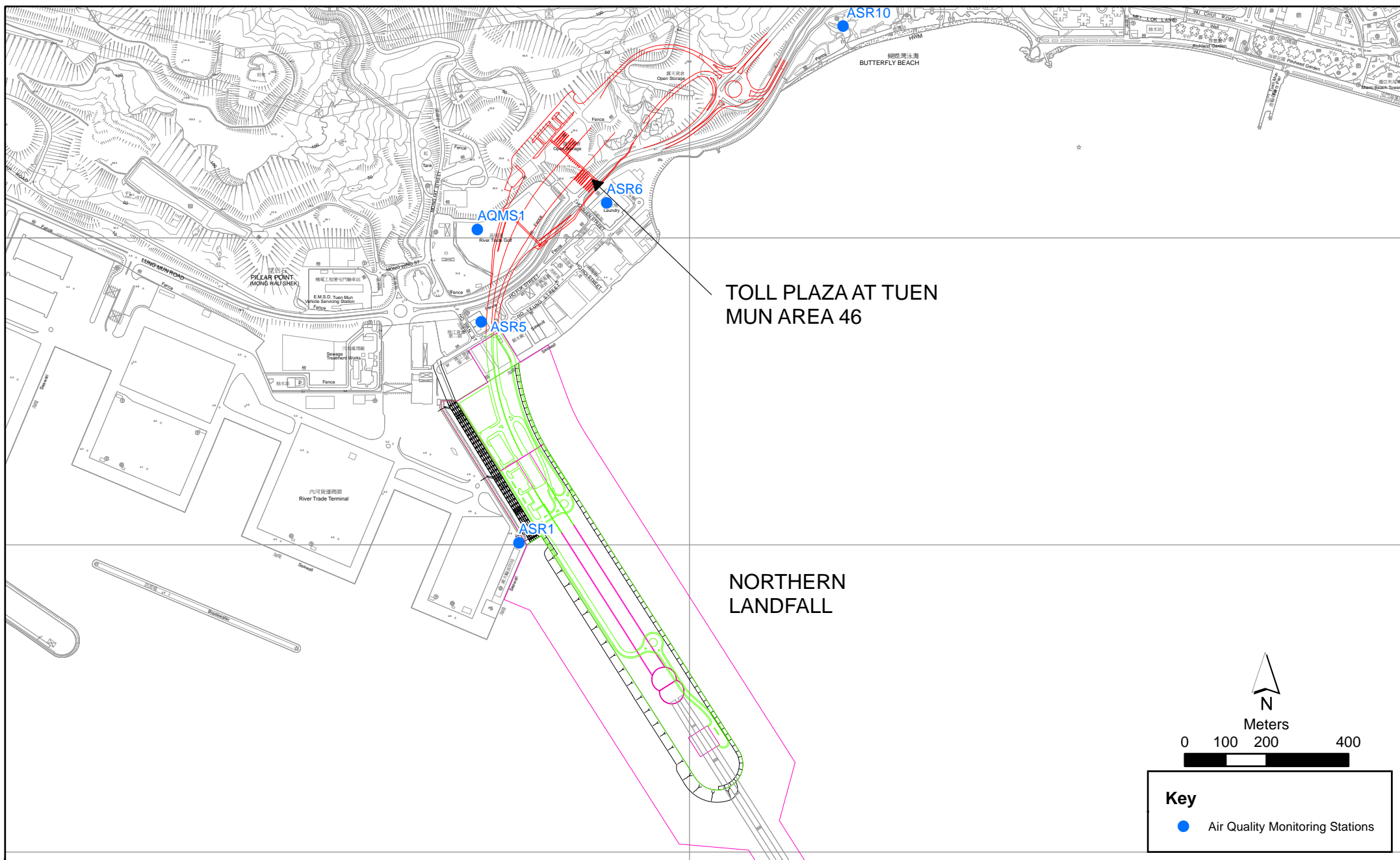


Figure 2.1

Air Quality Monitoring Stations for the Enhanced TSP Monitoring  
(Source: Adopted from Contract No. HY/2012/08 Tuen Mun-Chek Lap Kok Link -  
Northern Connection Sub-sea Tunnel Section)

File: T:\GIS\CONTRACT\0212330\Mxd\0212330\_ASR\_for\_Enhanced\_TSP\_monitoring.mxd  
Date: 21/2/2014

Environmental  
Resources  
Management

