

**Contract No. HY/2017/10  
Tuen Mun - Chek Lap Kok Link -  
Northern Connection Tunnel  
Buildings, Electrical and Mechanical  
Works**

*Eleventh Quarterly EM&A Report*

11 May 2021

**Environmental Resources Management**  
2509, 25/F One Harbourfront  
18 Tak Fung Street  
Hung Hom, Kowloon  
Hong Kong  
Telephone 2271 3000  
Facsimile 2723 5660

[www.erm.com](http://www.erm.com)





# Contract No. HY/2017/10 Tuen Mun – Chek Lap Kok Link – Northern Connection Tunnel Buildings, Electrical and Mechanical Works

**Environmental Resources  
Management**

2509, 25/F One Harbourfront  
18 Tak Fung Street  
Hungghom, Kowloon  
Hong Kong  
Telephone: (852) 2271 3000  
Facsimile: (852) 2723 5660  
E-mail: post.hk@erm.com  
http://www.erm.com

*Eleventh Quarterly EM&A Report*

**Document Code: 0463091\_11th Quarterly EM&A\_20210511.doc**

Client:  Gammon		Project No:  0463091			
Summary:  This document presents the Eleventh Quarterly EM&A Report for Tuen Mun – Chek Lap Kok Link – Northern Connection Tunnel Buildings, Electrical and Mechanical Works.		Date: 11 May 2021			
		Approved by:  			
		Mr Craig Reid Partner			
		Certified by:  			
		Dr Jasmine Ng ET Leader			
	Eleventh Quarterly Monthly EM&A Report	CW	JN	CAR	11/05/21
Revision	Description	By	Checked	Approved	Date
<p>This report has been prepared by Environmental Resources Management the trading name of 'ERM Hong-Kong, Limited', with all reasonable skill, care and diligence within the terms of the Contract with the client, incorporating our General Terms and Conditions of Business and taking account of the resources devoted to it by agreement with the client.</p> <p>We disclaim any responsibility to the client and others in respect of any matters outside the scope of the above.</p>		<p>Distribution</p> <p><input type="checkbox"/> Internal</p> <p><input checked="" type="checkbox"/> Public</p> <p><input type="checkbox"/> Confidential</p>			
		 			

23 June 2021

By Fax (2783 0155) and By Post

AECOM Asia Company Limited  
Supervising Officer's Representative Office  
No. 8 Mong Fat Street, Tuen Mun, New Territories, Hong Kong

Attention: Mr. Desmond Fung

Dear Mr. Fung,

**Re: Agreement No. CE 48/2011 (EP)  
Environmental Project Office for the  
HZMB Hong Kong Link Road, HZMB Hong Kong Boundary Crossing Facilities, and  
Tuen Mun-Chek Lap Kok Link – Investigation**

**Contract No. HY/2017/10  
TM-CLKL – Northern Connection Tunnel Buildings, E&M Works  
11<sup>th</sup> Quarterly EM&A Report for December 2020 – March 2021**

Reference is made to the Environmental Team's submission of the quarterly EM&A report for December 2020 – March 2021 (ET's ref.: "0463091\_11th Quarterly EM&A\_20210511.doc" dated 11 May 2021) certified by the ET Leader and provided to us via e-mail on 11 May 2021.

Please be informed that we have no adverse comments on the captioned submission.

Thank you very much your attention. Please feel free to contact the undersigned or the ENPO Leader, Mr. Y H Hui, should you require further information.

Yours sincerely,  
For and on behalf of  
Ramboll Hong Kong Limited



Brian Tam  
Independent Environmental Checker  
Tuen Mun-Chek Lap Kok Link

c.c.

HyD	Mr. Patrick Ng	(By Fax: 3188 6614)
HyD	Mr. Alan Ip	(By Fax: 3188 6614)
AECOM	Mr. Conrad Ng	(By Fax: 3922 9797)
ERM	Dr. Jasmine Ng	(By Fax: 2723 5660)
Gammon	Ms. Phoebe Ng	(By Fax: 3520 0486)

Internal: DY, YH, ENPO Site

Q:\Projects\HYDZHMBEEM00\02\_Proj\_Mgt\02\_Corr\HYDZHMBEEM00\_0\_8494L.21

## TABLE OF CONTENTS

	<i>EXECUTIVE SUMMARY</i>	<i>1</i>
<i>1</i>	<i>INTRODUCTION</i>	<i>5</i>
<i>1.1</i>	<i>BACKGROUND</i>	<i>5</i>
<i>1.2</i>	<i>SCOPE OF REPORT</i>	<i>6</i>
<i>1.3</i>	<i>ORGANIZATION STRUCTURE</i>	<i>6</i>
<i>1.4</i>	<i>SUMMARY OF CONSTRUCTION WORKS</i>	<i>6</i>
<i>2</i>	<i>EM&amp;A RESULTS</i>	<i>9</i>
<i>2.1</i>	<i>AIR QUALITY</i>	<i>9</i>
<i>2.2</i>	<i>EM&amp;A SITE INSPECTION</i>	<i>10</i>
<i>2.3</i>	<i>LANDFILL GAS HAZARD MONITORING</i>	<i>12</i>
<i>2.4</i>	<i>WASTE MANAGEMENT STATUS</i>	<i>12</i>
<i>2.5</i>	<i>ENVIRONMENTAL LICENSES AND PERMITS</i>	<i>14</i>
<i>2.6</i>	<i>IMPLEMENTATION STATUS OF ENVIRONMENTAL MITIGATION MEASURES</i>	<i>16</i>
<i>2.7</i>	<i>SUMMARY OF EXCEEDANCES OF THE ENVIRONMENTAL QUALITY PERFORMANCE LIMIT</i>	<i>16</i>
<i>2.8</i>	<i>SUMMARY OF COMPLAINTS, NOTIFICATION OF SUMMONS AND SUCCESSFUL PROSECUTIONS</i>	<i>16</i>
<i>3</i>	<i>FUTURE KEY ISSUES</i>	<i>17</i>
<i>3.1</i>	<i>CONSTRUCTION ACTIVITIES FOR THE COMING QUARTER</i>	<i>17</i>
<i>3.2</i>	<i>KEY ISSUES FOR THE COMING QUARTER</i>	<i>17</i>
<i>4</i>	<i>CONCLUSIONS AND RECOMMENDATIONS</i>	<i>18</i>
<i>4.1</i>	<i>CONCLUSIONS</i>	<i>18</i>

*List of Appendices*

- Appendix A Project Organization for Environmental Works
- Appendix B Construction Programmes
- Appendix C Implementation Schedule of Environmental Mitigation Measures (EMIS)
- Appendix D Summary of Action and Limit Levels
- Appendix E Event Action Plan
- Appendix F EM&A Monitoring Schedule
- Appendix G Landfill Gas Monitoring Graphical Presentation
- Appendix H Quarterly Summary of Waste Flow Table
- Appendix I Cumulative Statistics on Exceedances, Complaints, Notifications of Summons and Successful Prosecutions

## EXECUTIVE SUMMARY

Under *Contract No. HY/2017/10*, Gammon Construction Limited (GCL) is commissioned by the Highways Department (HyD) to undertake Northern Connection Tunnel Buildings, Electrical and Mechanical Works of the Tuen Mun – Chek Lap Kok Link Project (TM-CLK Link Project) while AECOM Asia Company Limited was appointed by HyD as the Engineer. For implementation of the environmental monitoring and audit (EM&A) programme under the Contract, ERM-Hong Kong, Limited (ERM) has been appointed as the Environmental Team (ET) in accordance with *Environmental Permit No. EP-354/2009/A*. Ramboll Hong Kong Ltd. was employed by HyD as the Independent Environmental Checker (IEC) and Environmental Project Office (ENPO). Subsequent applications for variation of environmental permits (VEP), *EP-354/2009/B*, *EP-354/2009/C* and *EP-354/2009/D*, were granted on 28 January 2014, 10 December 2014 and 13 March 2015, respectively.

The construction phase of the Contract commenced on 7 June 2018 and will tentatively be completed by 2021. The impact monitoring of the EM&A programme, including air quality and environmental site inspections, were commenced on 7 June 2018.

Termination proposal for construction EM&A programme was approved by EPD on 26 March 2021. The construction phase EM&A programme of the Contract has been terminated since 26 March 2021.

This is the Eleventh Quarterly EM&A Report presenting the EM&A works carried out during the period from 1 December 2020 to 26 March 2021 for the *Contract No. HY/2017/10 Northern Connection Tunnel Buildings, Electrical and Mechanical Works* (the “Contract”) in accordance with the Updated EM&A Manual of the TM-CLK Link Project. As informed by the Contractor, major activities in the reporting period included:

### December 2020

#### ***Land-based Works***

- Handover Inspection at Main Control Building;
- Handover Inspection at Ventilation Plant Room;
- Handover Inspection at North Ventilation Building;
- Handover Inspection at Administration Building;
- Handover Inspection at Maintenance Depot;
- Architectural Builder’s Work and Finishes Works at Fire Services Department Building;

- External cladding & louvre installation, E&M works and final finishing works at Customs and Excise Department Building;
- Handover Inspection at Kiosk N1;
- Handover Inspection at Kiosk N2;
- Handover Inspection at the Tunnel;
- Handover Inspection at C3 area;
- Handover Inspection at Satellite Control Building;
- Handover Inspection at Kiosk S2;
- Handover Inspection at South Ventilation Building; and
- Handover Inspection at Northern Landfall and Southern Landfall.

#### January 2021

##### *Land-based Works*

- Architectural Builder's Work and Finishes Works and Handover Inspection at Fire Services Department Building; and
- External cladding & luvre installation, E&M works, final finishing works and Handover Inspection at Customs and Excise Department Building.

#### February 2021

##### *Land-based Works*

- Architectural Builder's Work and Finishes Works and Handover Inspection at Fire Services Department Building; and
- E&M works, Final finishing works and Handover Inspection at Customs and Excise Department Building.

#### March 2021

##### *Land-based Works*

- Minor work at Fire Services Department Building;
- Minor work at Customs and Excise Department Building; and
- Minor works at Kiosk N1, Kiosk N2 and Kiosk S2.

A summary of monitoring and audit activities conducted in the reporting period is listed below <sup>(1)</sup>:

24-hour TSP Monitoring	18 sessions
1-hour TSP Monitoring	18 sessions
Landfill Gas Hazard Monitoring	94 days
Joint Environmental Site Inspection	17 sessions

#### Summary of Breaches of Action/Limit Levels

##### *Breaches of Action and Limit Levels for Air Quality*

Three (3) Action Level exceedances for 1-hour TSP were recorded by the Environmental Team of Contract No. HY/2012/08 during the reporting period.

##### *Breaches of Action Level for Landfill Gas Hazard Monitoring*

No exceedance of Action and Limit Level exceedance was recorded for landfill gas hazard monitoring in the reporting period.

#### Environmental Complaints, Non-compliance & Summons

There was no environmental complaint, notification of summons or successful prosecution recorded in the reporting period.

#### Reporting Change

Landscape and visual monitoring for 24-month establishment period conducted by Contract No. HY/2012/07 and HY/2013/12 was reported in the *Thirty-First EM&A report* for this Contract.

Landscape and visual monitoring for 24-month establishment period conducted by Contract No. HY/2013/12 and HMWSD 2/2020 (HY) was reported in the *Thirty-Third EM&A report* for this Contract.

Landscape and visual monitoring for 24-month establishment period for Southern Landfall, Northern Landfall and Main Control Building under this Contract was reported in the *Thirty-Fourth EM&A report* for this Contract.

Notification of temporary suspension of air quality monitoring has been approved by EPD on 16 March 2021.

Termination proposal for construction EM&A programme was approved by EPD on 26 March 2021. The construction phase EM&A programme of the Contract has been terminated since 26 March 2021.

(1) ET justification on the Contract Specific Environmental Monitoring and Audit activities under this Contract was submitted to ENPO on 11 September 2018



### Upcoming Works for the Next Reporting Period

There were no major works to be undertaken in the coming quarter.

### **Future Key Issues**

There were no major works to be undertaken in the coming quarter.

## 1.1

## BACKGROUND

According to the findings of the Northwest New Territories (NWNT) Traffic and Infrastructure Review conducted by the Transport Department, Tuen Mun Road, Ting Kau Bridge, Lantau Link and North Lantau Highway would be operating beyond capacity after 2016. This forecast has been based on the estimated increase in cross boundary traffic, developments in the Northwest New Territories (NWNT), and possible developments in North Lantau, including the Airport developments, the Lantau Logistics Park (LLP) and the Hong Kong – Zhuhai – Macao Bridge (HZMB). In order to cope with the anticipated traffic demand, two new road sections between NWNT and North Lantau – Tuen Mun – Chek Lap Kok Link (TM-CLKL) and Tuen Mun Western Bypass (TMWB) are proposed.

An Environmental Impact Assessment (EIA) of TM-CLKL (the Project) was prepared in accordance with the EIA Study Brief (No. ESB-175/2007) and the *Technical Memorandum of the Environmental Impact Assessment Process (EIAO-TM)*. The EIA Report was submitted under the Environmental Impact Assessment Ordinance (EIAO) in August 2009. Subsequent to the approval of the EIA Report (EIAO Register Number AEIAR-146/2009), an Environmental Permit (EP-354/2009) for TM-CLKL was granted by the Director of Environmental Protection (DEP) on 4 November 2009, and EP variation (VEP) (EP-354/2009/A) was issued on 8 December 2010. Subsequent applications for variation of environmental permits (VEPs), EP-354/2009/B, EP-354/2009/C and EP-354/2009/D, were granted on 28 January 2014, 10 December 2014 and 13 March 2015, respectively.

Under *Contract No. HY/2017/10*, Gammon Construction Limited (GCL) is commissioned by the Highways Department (HyD) to undertake the Northern Connection Tunnel Buildings, Electrical and Mechanical Works of TM-CLKL while AECOM Asia Company Limited was appointed by HyD as the Engineer. For implementation of the environmental monitoring and audit (EM&A) programme under the Contract, ERM-Hong Kong, Limited (ERM) has been appointed as the Environmental Team (ET). Ramboll Hong Kong Ltd. was employed by HyD as the Independent Environmental Checker (IEC) and Environmental Project Office (ENPO).

The construction phase of the Contract commenced on 7 June 2018 and will be tentatively completed by 2021. The impact monitoring phase of the EM&A programme, including air quality and environmental site inspections, commenced on 7 June 2018.

The general layout plan of the Contract components is presented in *Figures 1.1 & 1.2a to c*.

Project Management Initials: Designer: KATH Checked: SYLC Approved: CWN ISO A1 594mm x 841mm

Plot File by: Jerry Wong 23-Jan-18  
 PATH: Y:\TO TO RSS\MSL\C4 Drawings\C4 Drawings\CON\60240249\_C4\_7051.dgn



This drawing has been prepared for the use of AECOM's client. It may not be used, modified, reproduced or relied upon by third parties, except as agreed by AECOM or as required by law. AECOM accepts no responsibility, and denies any liability whatsoever, to any party that uses or relies on this drawing without AECOM's express written consent. Do not scale. All measurements must be obtained from the stated dimensions.

# AECOM

**PROJECT**  
 TUEN MUN -  
 CHEK LAP KOK LINK

**CONTRACT TITLE**  
 TUEN MUN - CHEK LAP KOK LINK  
 - NORTHERN CONNECTION TUNNEL  
 BUILDINGS, ELECTRICAL AND  
 MECHANICAL WORKS

**CLIENT**  
  
 路政署 HIGHWAYS DEPARTMENT  
 港珠澳大橋香港工程管理有限公司  
 Hong Kong - Zhuhai - Macao Bridge  
 Hong Kong Project Management Office

**CONSULTANT**  
 AECOM Asia Company Ltd.  
 www.aecom.com

**SUB-CONSULTANTS**

## Figure 1.1

**ISSUE/REVISION**

NO.	DATE	DESCRIPTION	CHK.
A	JAN.18	TENDER ADDENDUM NO.1	SYLC
-	DEC.17	TENDER DRAWING	SYLC

**STATUS**

**SCALE**  
 A1 1:40000  
**DIMENSION UNIT**  
 MILLIMETRES

**KEY PLAN**

**PROJECT NO.** 60240249  
**CONTRACT NO.** HY/2017/10

**SHEET TITLE**  
 OVERALL SITE PLAN

**SHEET NUMBER**  
 60240249/C4/7051A

Plot File by: Jerry Wong 23-Jan-18  
 PATH: Y:\TOTO\RES\SUB\1\CA Drawings\CA Drawing (2018\_01\_02)\Architectural drawings - CGN\60240249 CA\_7061.dgn  
 Project Management Initials: Designer: WATH Chenweid SYLC Approved: CWN ISO 1194mm x 847mm  
 01/7071 01/7072



**AECOM**

PROJECT  
1.3

**TUEN MUN - CHEK LAP KOK LINK**

CONTRACT TITLE  
TUEN MUN - CHEK LAP KOK LINK - NORTHERN CONNECTION TUNNEL BUILDINGS, ELECTRICAL AND MECHANICAL WORKS

CLIENT  

**HIGHWAYS DEPARTMENT**  
 路政署  
 香港 - 珠海 - 澳門大橋  
 Hong Kong - Zhuhai - Macao Bridge  
 Hong Kong Project Management Office

CONSULTANT  

**AECOM**  
 AECOM Asia Company Ltd.  
 www.aecom.com

SUB-CONSULTANTS  

**NET ENGINEERING**

**Figure 1.2a**

**ISSUE/REVISION**

NO.	DATE	DESCRIPTION	CHK.
A	JAN.18	TENDER ADDENDUM NO.1	SYLC
-	DEC.17	TENDER DRAWING	SYLC

**STATUS**

SCALE: 1:2500  
DIMENSION UNIT: MILLIMETRES

**KEY PLAN**

PROJECT NO. 60240249  
CONTRACT NO. HY/2017/10

SHEET TITLE  
ZONING PLAN (SHEET 1)

SHEET NUMBER  
60240249/C4/7061A

This drawing has been prepared for the use of AECOM's client. It may not be used, modified, reproduced or relied upon by third parties, except as signed by AECOM or as required by law. AECOM accepts no responsibility, and denies any liability whatsoever, to any party that uses or relies on this drawing without AECOM's express written consent. Do not scale the document. All measurements must be obtained from the stated dimensions.

Project Management initials: Designer: KATH Checked: SYLC Approved: CWN ISO A1 394mm x 641mm  
 CM3



**AECOM**

PROJECT  
 TUEN MUN - CHEK LAP KOK LINK

CONTRACT TITLE  
 TUEN MUN - CHEK LAP KOK LINK  
 - NORTHERN CONNECTION TUNNEL  
 BUILDINGS, ELECTRICAL AND  
 MECHANICAL WORKS

CLIENT  
 路政署  
 HIGHWAYS DEPARTMENT  
 港珠澳大橋管理處  
 Hong Kong - Zhuhai - Macao Bridge  
 Hong Kong Project Management Office

CONSULTANT  
 AECOM Asia Company Ltd.  
 www.aecom.com

SUB-CONSULTANTS

**Figure 1.2b**

ISSUE/REVISION

NO.	DATE	DESCRIPTION	CHK.
A	JAN.18	TENDER ADDENDUM NO.1	SYLC
	DEC.17	TENDER DRAWING	SYLC

STATUS

SCALE  
 A1 1:2500  
 DIMENSION UNIT  
 MILLIMETRES

KEY PLAN

PROJECT NO.  
 60240249  
 CONTRACT NO.  
 HY/2017/10

SHEET TITLE  
 ZONING PLAN  
 (SHEET 2)

SHEET NUMBER  
 60240249/C4/7062A

Plot File by: Jerry Wong 15-Jan-18  
 PATH: Y:\T014\_RSSMS\LC4\_Drawing\CA4\_Drawing\CA4\_Drawing\0249\_C4\_7062.dgn

This drawing has been prepared for the use of AECOM's client. It may not be used, modified, reproduced or relied upon by other parties, except as agreed by AECOM or as required by law. AECOM accepts no responsibility, and denies any liability whatsoever, to any party that uses or relies on this drawing without AECOM's express written consent. Do not scale this document. All measurements must be obtained from the stated dimensions.

Project Management Initials: Designer: KATH; Checked: SYLC; Approved: CWN ISO A1 554mm x 841mm

Plot File by: Jerrywong 17-Jan-18  
 PATH: Y:\TO\To RSS\SL\C4 Drawings\C4 Drawings\C4 Drawings - DGN\60240249 C4\_7063.dgn



**AECOM**

PROJECT  
 TUEN MUN - CHEK LAP KOK LINK

CONTRACT TITLE  
 TUEN MUN - CHEK LAP KOK LINK - NORTHERN CONNECTION TUNNEL BUILDINGS, ELECTRICAL AND MECHANICAL WORKS

CLIENT  

 路政署 HIGHWAYS DEPARTMENT  
 港珠澳大橋管理處 Hong Kong - Zhuhai - Macao Bridge Project Management Office

CONSULTANT  
 AECOM Asia Company Ltd.  
 www.aecom.com

SUB-CONSULTANTS

**Figure 1.2c**

ISSUE/REVISION

NO.	DATE	DESCRIPTION	CHK.
A	JAN. 18	TENDER ADDENDUM NO. 1	SYLC
	DEC. 17	TENDER DRAWING	SYLC

STATUS

SCALE: A1 1:2500  
 DIMENSION UNIT: MILLIMETRES

KEY PLAN

PROJECT NO.: 60240249  
 CONTRACT NO.: HY/2017/10

SHEET TITLE  
 ZONING PLAN (SHEET 3)

SHEET NUMBER  
 60240249/C4/7063A

This drawing has been prepared for the use of AECOM's client. It may not be used, modified, reproduced or related upon by third parties, except as agreed by AECOM or as required by law. AECOM accepts no responsibility and denies any liability whatsoever, to any party that uses or relies on this drawing without AECOM's express written consent. All measurements must be obtained from the stated dimensions.

Termination proposal for construction EM&A programme was approved by EPD on 26 March 2021. The construction phase EM&A programme of the Contract has been terminated since 26 March 2021.

## 1.2 SCOPE OF REPORT

This is the Eleventh Quarterly EM&A Report under the *Contract No. HY/2017/10 Tuen Mun – Chek Lap Kok Link – Northern Connection Tunnel Buildings, Electrical and Mechanical Works*. This report presents a summary of the environmental monitoring and audit works from 1 December 2020 to 26 March 2021.

## 1.3 ORGANIZATION STRUCTURE

The organization structure of the Contract is shown in *Appendix A*. The key personnel contact names and contact details are summarized in *Table 1.1* below.

**Table 1.1** *Contact Information of Key Personnel*

Party	Position	Name	Telephone	Fax
HyD (Highways Department)	Project Coordinator	Joseph Lee	2762 4958	3188 6614
	Senior Engineer	Cheng Pan	2762 3383	3188 6614
ER (AECOM Asia Company Limited)	Principle Resident Engineer	S. W. Fok	2293 6200	2293 6300
	Resident Engineer	Desmond Fung	2293 6200	2293 6300
ENPO / IEC (Ramboll Hong Kong Ltd.)	ENPO Leader	Y.H. Hui	3465 2850	3465 2899
	IEC	Brian Tam <sup>(1)</sup>	9700 6767	3465 2899
Contractor (Gammon Construction Limited)	Site Agent	H. H. Lee	6096 6281	-
	Environmental Officer	Phoebe Ng	9869 1105	-
ET (ERM-HK)	ET Leader	Dr. Jasmine Ng	2271 3311	2723 5660

(1) The role and responsibilities as the IEC of the Contract has been taken up by Mr Brian Tam instead of Mr. Manson Yeung since 12 April 2021.

## 1.4 SUMMARY OF CONSTRUCTION WORKS

The construction phase of the Contract commenced on 7 June 2018. The rolling construction programme for the period of December 2020 to March 2021 is shown in *Appendix B*.

As informed by the Contractor, details of the major works carried out in this reporting period are listed below:

## December 2020

### *Land-based Works*

- Handover Inspection at Main Control Building;
- Handover Inspection at Ventilation Plant Room;
- Handover Inspection at North Ventilation Building;
- Handover Inspection at Administration Building;
- Handover Inspection at Maintenance Depot;
- ABWF Works at Fire Services Department Building;
- External cladding & louvre installation, E&M works and final finishing works at Customs and Excise Department Building;
- Handover Inspection at Kiosk N1;
- Handover Inspection at Kiosk N2;
- Handover Inspection at the Tunnel;
- Handover Inspection at C3 area;
- Handover Inspection at Satellite Control Building;
- Handover Inspection at Kiosk S2;
- Handover Inspection at South Ventilation Building; and
- Handover Inspection at Northern Landfall and Southern Landfall.

## January 2021

### *Land-based Works*

- Architectural Builder's Work and Finishes Works and Handover Inspection at Fire Services Department Building; and
- External cladding & luvre installation, E&M works, final finishing works and Handover Inspection at Customs and Excise Department Building.

## February 2021

### *Land-based Works*

- Architectural Builder's Work and Finishes Works and Handover Inspection at Fire Services Department Building; and
- E&M works, Final finishing works and Handover Inspection at Customs and Excise Department Building.



March 2021

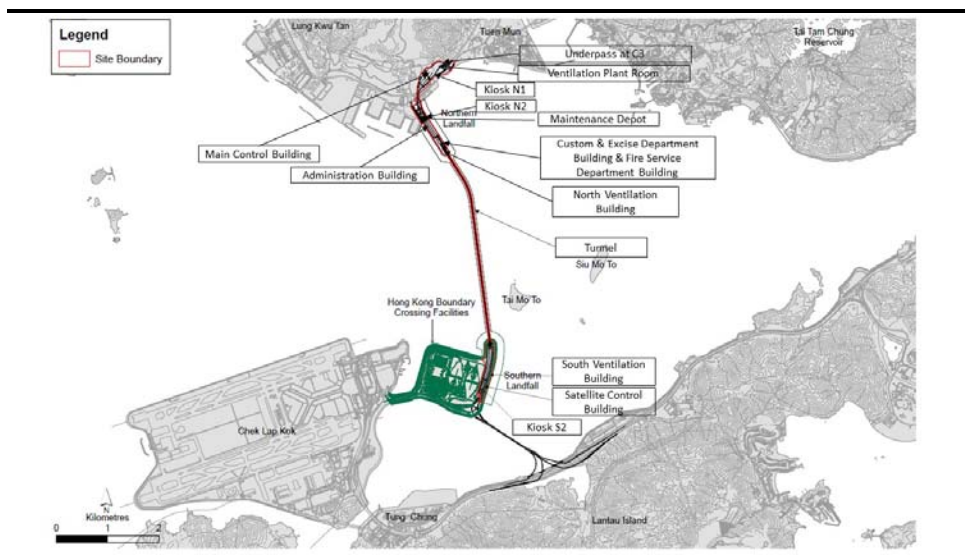
***Land-based Works***

- Minor work at Fire Services Department Building;
- Minor work at Customs and Excise Department Building; and
- Minor works at Kiosk N1, Kiosk N2 and Kiosk S2.

The locations of the construction activities are shown in *Figure 1.3*. The Environmental Sensitive Receivers in the vicinity of the Contract are shown in *Figure 1.4*.

The implementation schedule of environmental mitigation measures is presented in *Appendix C*.

**Figure 1.3** *Locations of Major Construction Activities in the Reporting Period*



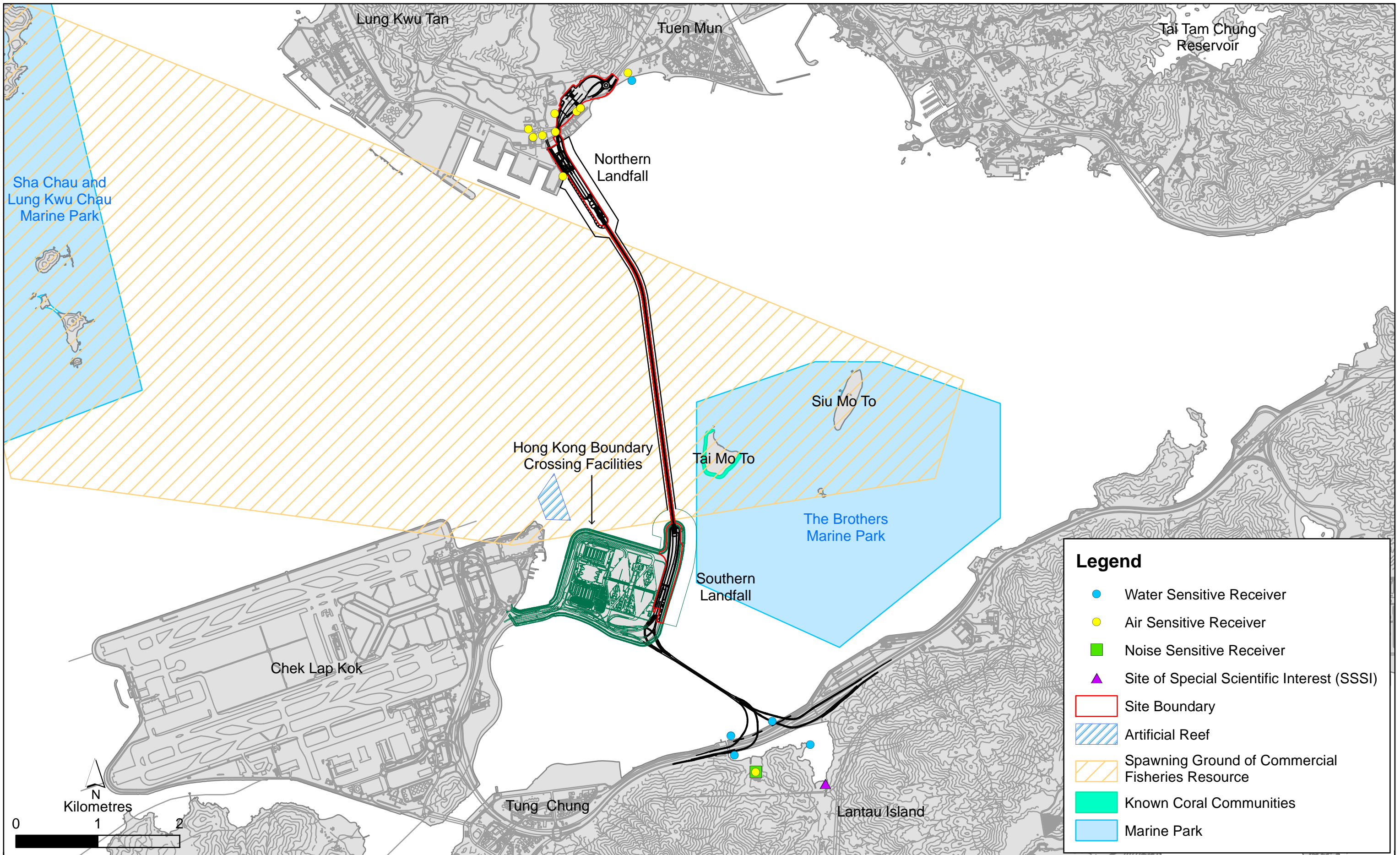


Figure 1.4

Environmental Sensitive Receivers in the Vicinity of the Project

The EM&A programme required environmental monitoring for air quality and environmental site inspections for air quality, water quality and waste management. The EM&A requirements and related findings for each component are summarized in the following sections

## 2.1 AIR QUALITY

### 2.1.1 Monitoring Requirements and Equipment

In accordance with the Updated EM&A Manual and the Enhanced TSP Monitoring Plan, impact 1-hour TSP monitoring was conducted three (3) times every six (6) days and impact 24-hour TSP monitoring was carried out once every six (6) days when the highest dust impact was expected. 1-hr and 24-hr TSP monitoring frequency was increased to three times per day every three days and daily every three days, respectively, as excavation works for launching shaft under *Contract No. HY/2012/08 Tuen Mun-Chek Lap Kok Link – Northern Connection Sub-sea Tunnel Section* commenced on 24 October 2014.

Informed by the Environmental Team of *Contract No. HY/2012/08 Tuen Mun-Chek Lap Kok Link – Northern Connection Sub-sea Tunnel Section*, excavation works for launching shaft were completed and notification of change on air quality monitoring frequency was submitted to EPD on 14 September 2020. 1-hr and 24-hr TSP monitoring frequency was changed to three times per day every six days and daily every six days, respectively, since 14 September 2020.

Results of air quality monitoring were adopted from the published EM&A data of *Contract No. HY/2012/08 Tuen Mun-Chek Lap Kok Link – Northern Connection Sub-sea Tunnel Section* <sup>(1)</sup>.

The Action and Limit Levels of the air quality monitoring were adopted from the published EM&A reports of *Contract No. HY/2012/08 Tuen Mun-Chek Lap Kok Link – Northern Connection Sub-sea Tunnel Section* <sup>(2)</sup>. The Action and Limit Levels are provided in *Appendix D*.

The locations of the monitoring stations overlapped with *Contract No. HY/2012/08* are shown in *Figure 2.1* and presented in *Table 2.1*.

Notification of temporary suspension of air quality monitoring has been approved by EPD on 16 March 2021.

(1) Published EM&A data for impact air quality monitoring by *Contract No. HY/2012/08* are available at: <http://www.hzmbenpo.com/>

(2) Published EM&A reports of *Contract No. HY/2012/08* are available at: <http://www.hzmbenpo.com/>

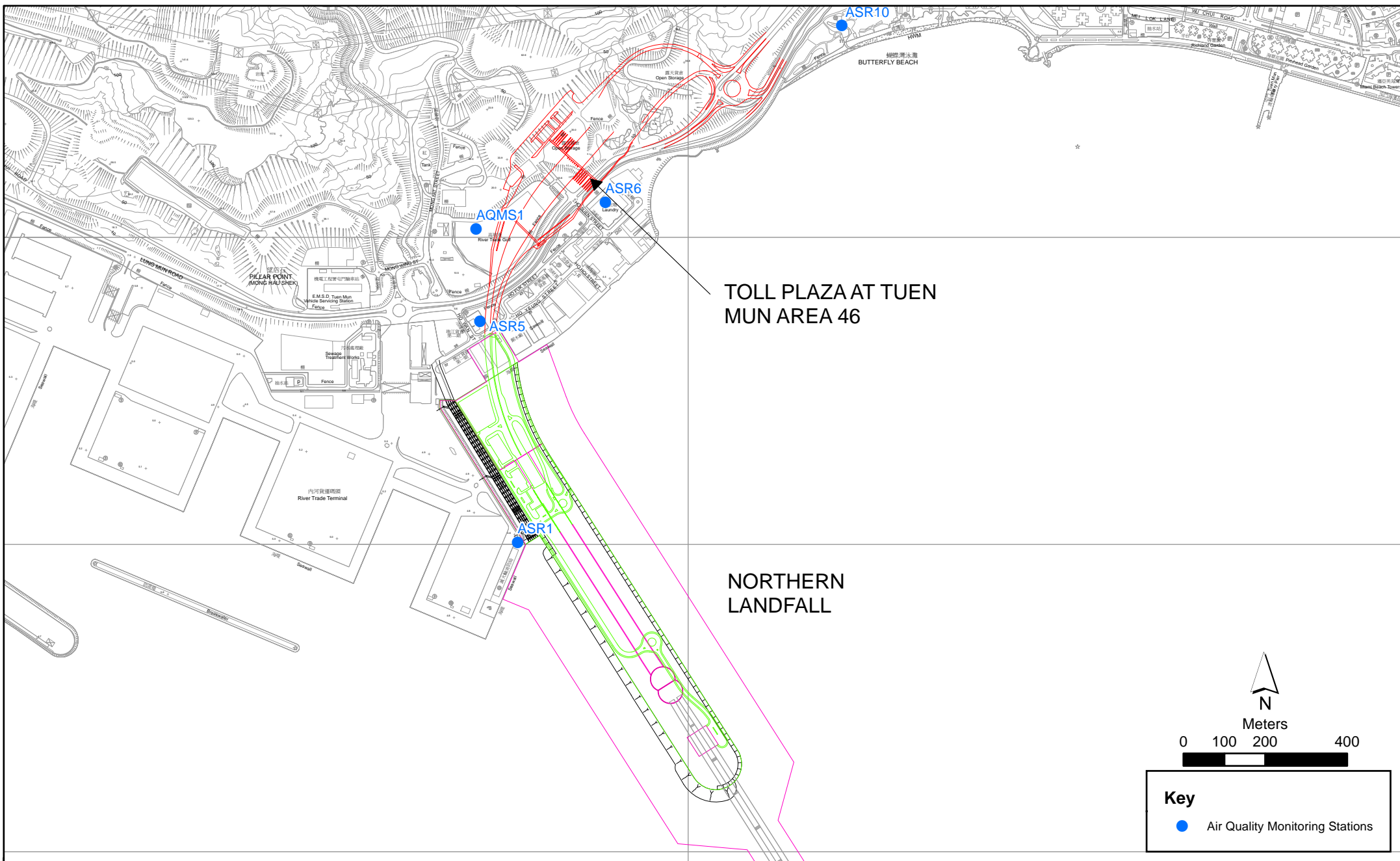


Figure 2.1

Air Quality Monitoring Stations for the Enhanced TSP Monitoring  
 (Source: Adopted from Contract No. HY/2012/08 Tuen Mun-Chek Lap Kok Link -  
 Northern Connection Sub-sea Tunnel Section)

**Table 2.1** *Locations of Impact Air Quality Monitoring Stations and its Corresponding Monitoring Requirements*

Monitoring Station	Monitoring Dates	Location	Description	Parameters & Frequency
ASR1	4, 10, 16, 22 and 28 December 2020	Tuen Mun Fireboat Station	Office	TSP monitoring <ul style="list-style-type: none"> <li>1-hour Total Suspended Particulates (1-hour TSP, <math>\mu\text{g}/\text{m}^3</math>), 3 times in every 6 days</li> </ul>
ASR5	2, 8, 14, 20 and 26 January 2021	Pillar Point Fire Station	Office	<ul style="list-style-type: none"> <li>24-hour Total Suspended Particulates (24-hour TSP, <math>\mu\text{g}/\text{m}^3</math>), daily for 24-hour in every 6 days</li> </ul>
AQMS1	1, 5, 10, 16, 22 and 27 February 2021	Previous River Trade Golf	Bare ground	Enhanced TSP monitoring (commenced on 24 October 2014 under <i>Contract No. HY/2012/08</i> ) <ul style="list-style-type: none"> <li>1-hour Total Suspended Particulates (1-hour TSP, <math>\mu\text{g}/\text{m}^3</math>), 3 times in every 3 days</li> </ul>
ASR6	4, 10 and 16 March 2021	Butterfly Beach Laundry	Office	<ul style="list-style-type: none"> <li>24-hour Total Suspended Particulates (24-hour TSP, <math>\mu\text{g}/\text{m}^3</math>), daily for 24-hour in every 3 days</li> </ul>
ASR10		Butterfly Beach Park	Recreational uses	<ul style="list-style-type: none"> <li>24-hour Total Suspended Particulates (24-hour TSP, <math>\mu\text{g}/\text{m}^3</math>), daily for 24-hour in every 3 days</li> </ul>

### 2.1.2 *Results and Observations*

Results of air quality monitoring were adopted from the published EM&A data of *Contract No. HY/2012/08 Tuen Mun-Chek Lap Kok Link – Northern Connection Sub-sea Tunnel Section* <sup>(1)</sup>.

Three (3) Action Level exceedances for 1-hour TSP were recorded by the Environmental Team of *Contract No. HY/2012/08* during the reporting period. The exceedances were considered not related to this Contract upon further investigation and the investigation reports are presented in *Appendix I*. No action is required to be undertaken in accordance with the Event Action Plan as presented in *Appendix E*.

## 2.2 *EM&A SITE INSPECTION*

Site inspections were carried out on a weekly basis to monitor the implementation of proper environmental pollution control and mitigation measures under the Contract. Seventeen (17) site inspections were carried out in the reporting period on 4, 10, 16, 24 and 31 December 2020, 8, 15, 22 and 29 January 2021, 4, 10, 19 and 26 February 2021 and 5, 12, 19 and 26 March 2021.

Key observations and recommendations during the site inspections in this reporting period are summarized in *Table 2.2*.

(1) Published EM&A data for impact air quality monitoring by *Contract No. HY/2012/08* are available at: <http://www.hzmbenpo.com/>

**Table 2.2 Specific Observations and Recommendations during the Weekly Site Inspection in this Reporting Period**

<b>Inspection Date</b>	<b>Observations</b>	<b>Recommendations/ Remarks</b>
4 December 2020	Container Village <ul style="list-style-type: none"> <li>• Dry haul road was observed.</li> <li>• Drip tray was not provided for the oil pump.</li> </ul>	Container Village <ul style="list-style-type: none"> <li>• The Contractor was reminded to provide water spraying along the haul road.</li> <li>• The Contractor was reminded to provide drip tray for the oil pump.</li> </ul>
10 December 2020	Southern Landfall <ul style="list-style-type: none"> <li>• Nil.</li> </ul>	Southern Landfall <ul style="list-style-type: none"> <li>• Nil.</li> </ul>
16 December 2020	Container Village <ul style="list-style-type: none"> <li>• Drip tray was not provided for the oil pump.</li> </ul>	Container Village <ul style="list-style-type: none"> <li>• The Contractor was reminded to provide drip tray for the oil pump.</li> </ul>
24 December 2020	Customs and Excise Department Building <ul style="list-style-type: none"> <li>• Chemical containers were not placed in dtip tray.</li> </ul> Container Village <ul style="list-style-type: none"> <li>• Dry haul road was observed.</li> </ul>	Customs and Excise Department Building <ul style="list-style-type: none"> <li>• The Contractor was reminded to provide drip tray for the chemicals.</li> </ul> Container Village <ul style="list-style-type: none"> <li>• The Contractor was reminded to provide water spraying along the haul road.</li> </ul>
31 December 2020	Customs and Excise Department Building <ul style="list-style-type: none"> <li>• Chemical containers were not placed in dtip tray.</li> </ul>	Customs and Excise Department Building <ul style="list-style-type: none"> <li>• The Contractor was reminded to provide drip tray for the chemicals.</li> </ul>
8 January 2021	Container Village <ul style="list-style-type: none"> <li>• Dry unpaved area was observed.</li> </ul>	Container Village <ul style="list-style-type: none"> <li>• The Contractor was reminded to provide water spraying.</li> </ul>
15 January 2021	Container Village <ul style="list-style-type: none"> <li>• Stockpile was not properly covered.</li> </ul> Customs and Excise Department Building <ul style="list-style-type: none"> <li>• Oil stain was observed nearby the generator.</li> </ul>	Container Village <ul style="list-style-type: none"> <li>• The Contractor was reminded to cover the stockpile with tarpaulin sheet.</li> </ul> Customs and Excise Department Building <ul style="list-style-type: none"> <li>• The Contractor was reminded to clear the oil stain.</li> <li>• The Contractor was reminded to properly sort and disposed of the chemical waste.</li> </ul>
22 January 2021	Northern Landfall <ul style="list-style-type: none"> <li>• Nil.</li> </ul>	Northern Landfall <ul style="list-style-type: none"> <li>• Nil.</li> </ul>
29 January 2021	Container Village <ul style="list-style-type: none"> <li>• Dry road was observed.</li> <li>• Wheelwashing facilities should be maintained properly.</li> </ul>	Container Village <ul style="list-style-type: none"> <li>• The Contractor was reminded to provide water spraying on dry road.</li> <li>• The Contractor was reminded to maintain wheelwashing facilities.</li> </ul>
4 February 2021	Container Village <ul style="list-style-type: none"> <li>• Dry road was observed.</li> </ul>	Container Village <ul style="list-style-type: none"> <li>• The Contractor was reminded to provide watering on dry road.</li> </ul>
10 February 2021	Container Village <ul style="list-style-type: none"> <li>• Oil leakage was observed near the generator at Container Village.</li> </ul> Customs and Excise Department Building <ul style="list-style-type: none"> <li>• Chemical container was observed without drip tray.</li> </ul>	Container Village <ul style="list-style-type: none"> <li>• The Contractor was reminded to remove oil leakage as chemical waste.</li> </ul> Customs and Excise Department Building <ul style="list-style-type: none"> <li>• The Contractor was reminded to provide drip tray for chemical container.</li> </ul>

<b>Inspection Date</b>	<b>Observations</b>	<b>Recommendations/ Remarks</b>
19 February 2021	Customs and Excise Department Building <ul style="list-style-type: none"> <li>Chemical containers were observed not placed in drip tray.</li> <li>Accumulated oil was observed in drip tray.</li> </ul>	Customs and Excise Department Building <ul style="list-style-type: none"> <li>The Contractor was reminded to provide drip tray for chemical containers.</li> <li>The Contractor was reminded to clean the drip tray regularly.</li> </ul>
26 February 2021	Customs and Excise Department Building <ul style="list-style-type: none"> <li>Chemical containers were observed not placed in drip tray.</li> <li>Wheel washing facility near the site office was not maintained properly.</li> </ul>	Customs and Excise Department Building <ul style="list-style-type: none"> <li>The Contractor was reminded to provide drip tray for chemical containers.</li> <li>The Contractor was reminded to maintain the wheel washing facility.</li> </ul>
5 March 2021	Container Village <ul style="list-style-type: none"> <li>Watering was not provided for wheelwash.</li> </ul>	Container Village <ul style="list-style-type: none"> <li>The Contractor was reminded to provide watering for wheelwash.</li> </ul>
12 March 2021	Customs and Excise Department Building <ul style="list-style-type: none"> <li>Chemicals were observed not placed in drip tray.</li> <li>Oil inside the drip tray should be cleared.</li> </ul>	Customs and Excise Department Building <ul style="list-style-type: none"> <li>The Contractor was reminded to place chemicals in drip tray.</li> <li>The Contractor was reminded to clear the oil inside the drip tray.</li> </ul>
19 March 2021	Customs and Excise Department Building <ul style="list-style-type: none"> <li>Nil.</li> </ul>	Customs and Excise Department Building <ul style="list-style-type: none"> <li>Nil.</li> </ul>
26 March 2021	Customs and Excise Department Building <ul style="list-style-type: none"> <li>Nil.</li> </ul>	Customs and Excise Department Building <ul style="list-style-type: none"> <li>Nil.</li> </ul>

The Contractor has rectified all of the observations as identified during environmental site inspections in the reporting period.

### 2.3 **LANDFILL GAS HAZARD MONITORING**

In accordance with the Updated EM&A Manual of the TM-CLK Link Project, landfill gas hazard monitoring should be performed to ensure that the works area at Pillar Point Valley (PPV) Landfill is free of landfill gas during any excavations works. A total of 94 days of landfill gas hazard monitoring was conducted at Main Control Building during 1 December 2020 to 26 March 2021 during the reporting period (*Appendix F*).

The Action and Limit Levels of the landfill gas hazard monitoring were adopted from the Undated EM&A Manual of the TM-CLK Link Project and are provided in *Appendix D*.

#### 2.3.1 **Results and Observations**

Results for landfill gas hazard monitoring are summarized in *Table 2.3* and the monitoring data is provided in *Appendix G*.

No exceedance of Action and Limit Levels for methane, oxygen and carbon dioxide was recorded in the reporting period.

**Table 2.3 Summary of Landfill Gas Hazard Monitoring Results in the Reporting Period**

		<b>Average (%)</b>	<b>Range (%)</b>	<b>Action / Limit Level (%)</b>
<b>December</b>	Methane	0	0	10/20

		Average (%)	Range (%)	Action / Limit Level (%)
2020	Oxygen	20.8	20.8-20.8	19/18
	Carbon Dioxide	0.03	0.03-0.03	0.5/1.5
January	Methane	0	0	10/20
2021	Oxygen	20.8	20.8-20.8	19/18
	Carbon Dioxide	0.03	0.03-0.03	0.5/1.5
February	Methane	0	0	10/20
2021	Oxygen	20.8	20.8-20.8	19/18
	Carbon Dioxide	0.03	0.03-0.03	0.5/1.5
March 2021	Methane	0	0	10/20
	Oxygen	20.8	20.8-20.8	19/18
	Carbon Dioxide	0.03	0.03-0.03	0.5/1.5

## 2.4 WASTE MANAGEMENT STATUS

The Contractor had submitted application form for registration as chemical waste producer under the Contract. Sufficient numbers of receptacles were available for general refuse collection and sorting.

Wastes generated during this reporting period included mainly construction wastes (inert and non-inert). Reference has been made to the waste flow table prepared by the Contractor (*Appendix H*). The quantities of different types of wastes are summarized in *Table 2.4*.

**Table 2.4 Quantities of Different Waste Generated in the Reporting Period**

Month/Year	Inert C&D Materials <sup>(a)</sup> (m <sup>3</sup> )	Inert Construction Waste Re-used (m <sup>3</sup> )	Non-inert Construction Waste <sup>(b)</sup> (kg)	Imported Fill (m <sup>3</sup> )	Recyclable Materials <sup>(c)</sup> (kg)	Chemical Wastes (kg)
December 2020	20	0	69,780	0	0	0
January 2021	0	0	46,750	0	0	0
February 2021	7,720	0	18,910	0	0	0
March 2021	0	0	31,050	0	0	0

**Notes:**

- (a) Inert construction wastes include hard rock and large broken concrete disposed as public fill.
- (b) Non-inert construction wastes include general refuse disposed at landfill.
- (c) Recyclable materials include metals, paper, cardboard, plastics, timber and others.

The Contractor was advised to properly maintain on site C&D materials and waste collection, sorting and recording system, dispose of C&D materials and wastes at designated ground and maximize reuse/ recycle of C&D materials and wastes. The Contractor was also reminded to properly maintain the site tidiness and dispose of the wastes accumulated on site regularly and properly.

For chemical waste containers, the Contractor was reminded to treat chemical waste properly and store the containers temporarily in designated chemical waste storage area on site in accordance with the *Code of Practice on the Packaging, Labelling and Storage of Chemical Wastes*.



## 2.5

### *ENVIRONMENTAL LICENSES AND PERMITS*

The status of environmental licensing and permit is summarized in *Table 2.5* below.

**Table 2.5 Summary of Environmental Licensing and Permit Status**

License/ Permit	License or Permit No.	Date of Issue	Date of Expiry	License/ Permit Holder	Remarks
Environmental Permit	EP-354/2009/D	13 March 2015	N/A	HyD	Tuen Mun- Chek Lap Kok Link
APCO Construction Dust Notification	433493	14 May 2018	N/A	GCL	For Tuen Mun working area
Construction Waste Billing Account	7030836	15 May 2018	N/A	GCL	N/A
Chemical Waste Producer Registration	5213-422-G2827-01	13 June 2018	N/A	GCL	N/A
Discharge License under WPCO for Buildings at C2 area	WT00031783-2018	22 October 2018	31 October 2023	GCL	Sampling Frequency: Bimonthly
Discharge License under WPCO for Buildings at C3 area	WT00032062-2018	30 October 2018	31 October 2023	GCL	Sampling Frequency: Quarterly
Discharge License under WPCO for Southern Landfall	WT00034878-2019	1 April 2020	31 March 2025	GCL	Sampling Frequency: Quarterly
Construction Noise Permit	GW-RW0351-20	3 August 2020	29 January 2021	GCL	For Northern Landfall and Tunnel
Construction Noise Permit	GW-RW0578-20	31 December 2020	14 June 2021	GCL	For Northern Landfall and Tunnel
Construction Noise Permit	GW-RW0003-21	30 January 2021	29 July 2021	GCL	For Northern Landfall and Tunnel
Construction Noise Permit	GW-RS0413-20	19 June 2020	15 December 2020	GCL	For HKBCF Area
Construction Noise Permit	GW-RS0904-20	16 December 2020	14 June 2021	GCL	For HKBCF Area
Construction Noise Permit	GW-RW0501-20	27 October 2020	24 December 2020	GCL	For Lung Mun Road Overnight Works
Construction Noise Permit	GW-RW0578-20	31 December 2020	14 June 2021	GCL	For Lung Mun Road near Ho Wan Street

**2.6** *IMPLEMENTATION STATUS OF ENVIRONMENTAL MITIGATION MEASURES*

In response to the site audit findings, the Contractors carried out all corrective actions.

A summary of the Implementation Schedule of Environmental Mitigation Measures (EMIS) is presented in *Appendix C*. The necessary mitigation measures relevant to this Contract were implemented properly.

**2.7** *SUMMARY OF EXCEEDANCES OF THE ENVIRONMENTAL QUALITY PERFORMANCE LIMIT*

Three (3) Action Level exceedances for 1-hour TSP were recorded by the Environmental Team of Contract No. *HY/2012/08* during the reporting period. The exceedances were considered not related to this Contract upon further investigation and the investigation reports are presented in *Appendix I*. No action is required to be undertaken in accordance with the Event Action Plan as presented in *Appendix E*.

No exceedance of Action and Limit Levels for methane, oxygen and carbon dioxide was recorded landfill gas hazard monitoring in the reporting period

Cumulative statistics are provided in *Appendix I*.

**2.8** *SUMMARY OF COMPLAINTS, NOTIFICATION OF SUMMONS AND SUCCESSFUL PROSECUTIONS*

The Environmental Complaint Handling Procedure is provided in *Figure 2.2*.

There was no environmental complaint, notification of summons or successful prosecution recorded in the reporting period.

Statistics on complaints, notifications of summons, successful prosecutions are summarized in *Appendix I*.

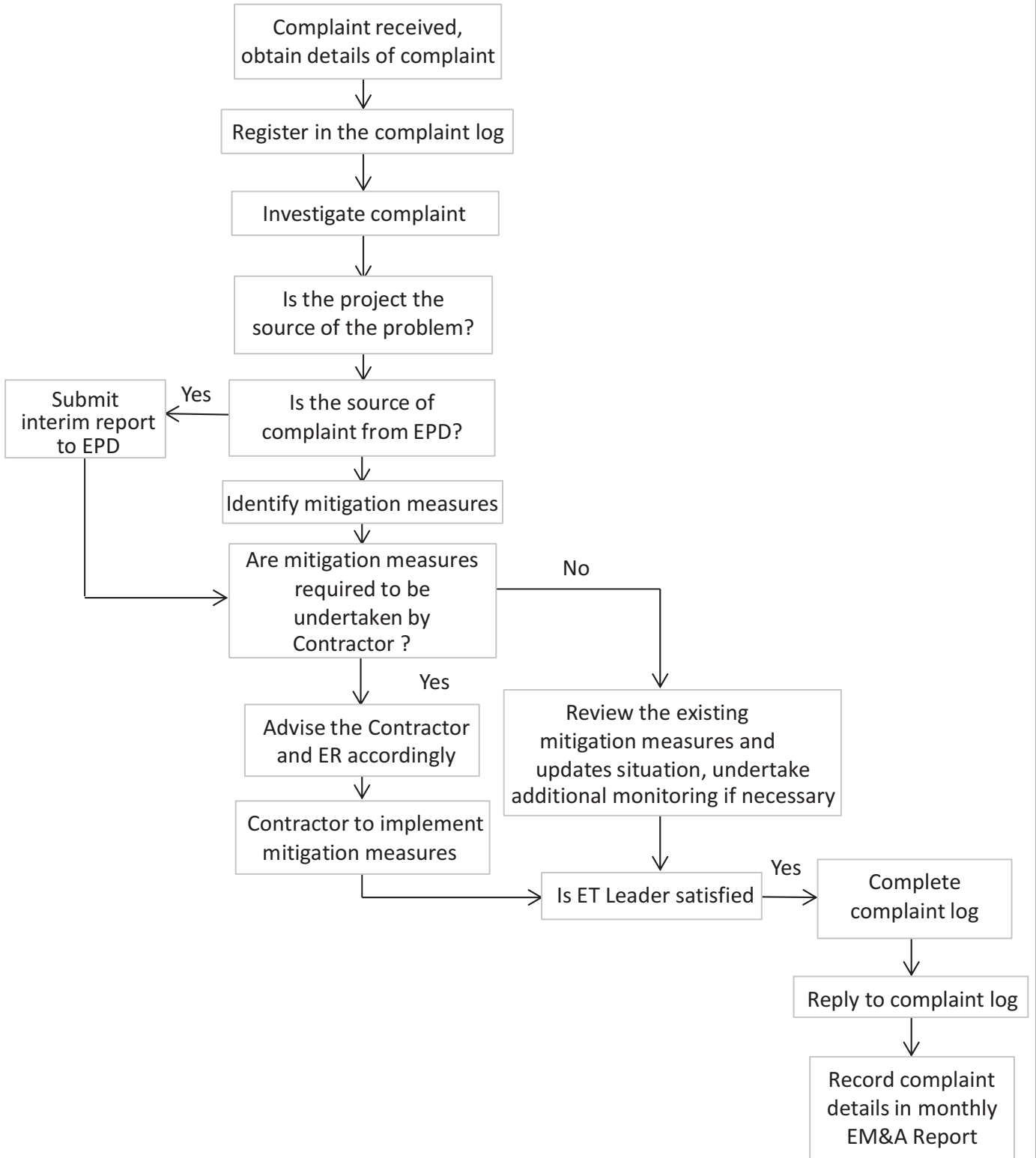


Figure 2.2

Environmental Complaint Handling Procedure

### 3 *FUTURE KEY ISSUES*

#### 3.1 *CONSTRUCTION ACTIVITIES FOR THE COMING QUARTER*

As informed by the Contractor, no major works will be undertaken in the coming quarter.

#### 3.2 *KEY ISSUES FOR THE COMING QUARTER*

As informed by the Contractor, no major works will be undertaken in the coming quarter.

#### 4.1 CONCLUSIONS

This Eleventh Quarterly EM&A Report presents the findings of the EM&A activities undertaken during the period from 1 December 2020 to 26 March 2021, in accordance with the Updated EM&A Manual and the requirements of EP-354/2009/D.

Air quality monitoring (including 1-hour TSP and 24-hour TSP) was carried out in this reporting period.

Three (3) Action Level exceedances for 1-hour TSP were recorded by the Environmental Team of Contract No. *HY/2012/08* during the reporting period. The exceedances were considered not related to this Contract upon further investigation and the investigation reports are presented in *Appendix I*. No action is required to be undertaken in accordance with the Event Action Plan as presented in *Appendix E*.

No exceedance of Action and Limit Levels for methane, oxygen and carbon dioxide was recorded during landfill gas hazard monitoring in the reporting period.

Environmental site inspection was carried out seventeen (17) times in the reporting period. Remedial actions recommended for the deficiencies identified during the site audits were properly implemented by the Contractor.

Landscape and visual monitoring for 24-month establishment period conducted by Contract No. *HY/2012/07* and *HY/2013/12* was reported in the *Thirty-First EM&A report* for this Contract.

Landscape and visual monitoring for 24-month establishment period conducted by Contract No. *HY/2013/12* and *HMWSD 2/2020 (HY)* was reported in the *Thirty-Third EM&A report* for this Contract.

Landscape and visual monitoring for 24-month establishment period for Southern Landfall, Northern Landfall and Main Control Building under this Contract was reported in the *Thirty-Fourth EM&A report* for this Contract.

Notification of temporary suspension of air quality monitoring has been approved by EPD on 16 March 2021.

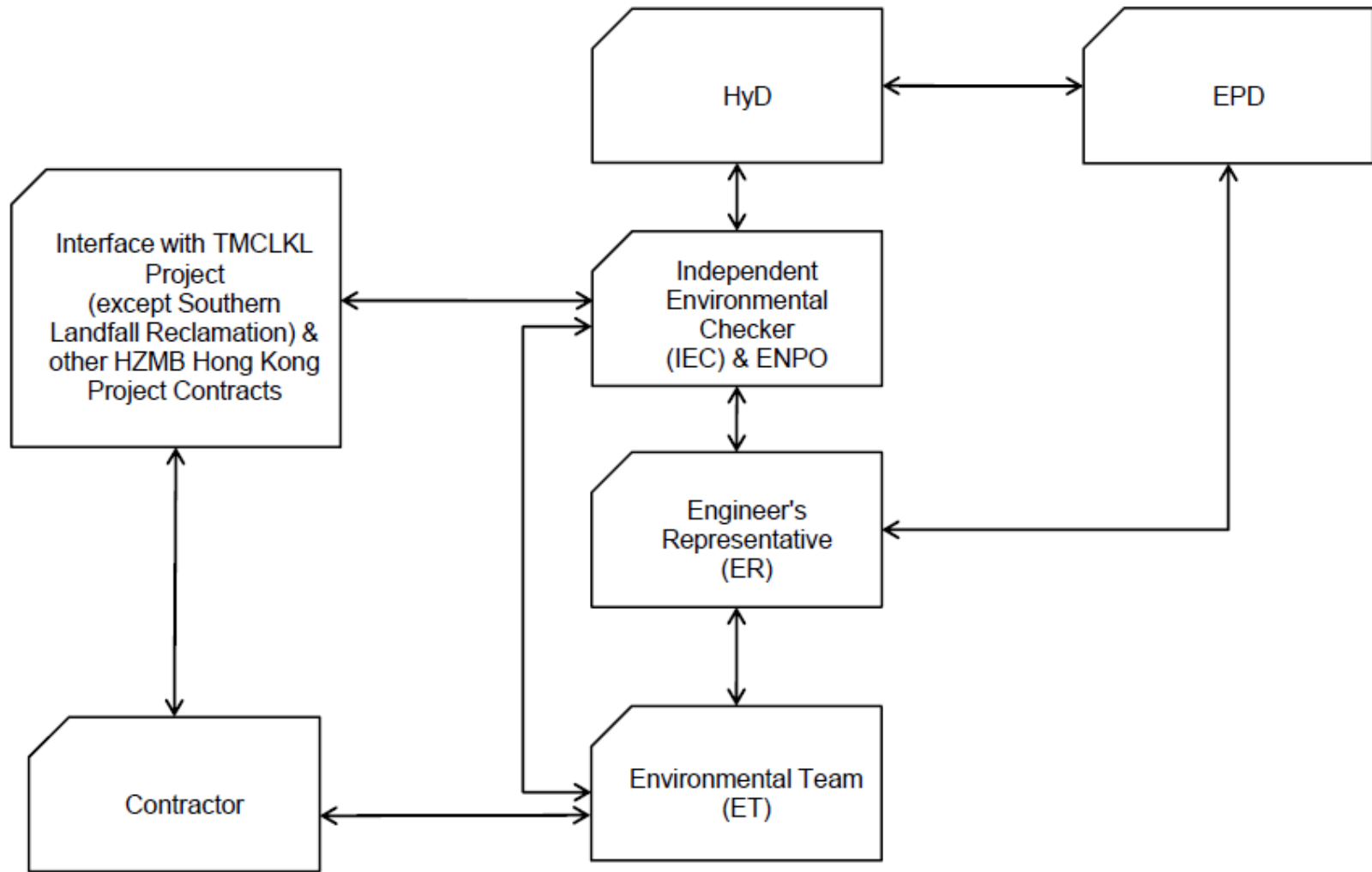
There was no environmental complaint, notification of summons or successful prosecution recorded in the reporting period.

Termination proposal for construction EM&A programme was approved by EPD on 26 March 2021. The construction phase EM&A programme of the Contract has been terminated since 26 March 2021.

Appendix A

## Project Organization for Environmental Works





↔ Line of Communication

Appendix B

## Construction Programme

ID	Activity	Duration (Days)	Activity % Complete	Start	Finish	Total Float	2018												2019												2020												2021
							M	Jun	Jul	A	S	Oct	N	Dec	Jan	F	Mar	Apr	M	Jun	Jul	Aug	S	Oct	N	Dec	Jan	F	Mar	Apr	M	Jun	Jul	Aug	S	Oct	N	Dec	Jan				
HY2017/10 - Works Programme Three Month Rolling Programme 20-Dec-20																																											
<b>Contract Dates</b>																																											
<b>Key Dates</b>																																											
KD08	All Other Works for Tunnel Commissioning & Opening	0	100%		04-Dec-20 A																																						
KD09	C&ED Building, E&M Works, & FSD Inspection	0	0%		20-Dec-20*	-133																																					
KD10	FSD Building, E&M Works, & FSD Inspection	0	0%		20-Dec-20*	-194																																					
<b>Portion Possession Dates</b>																																											
P325	Possession to Portion XXII (Day 483)	0	0%	20-Dec-20		-64																																					
P335	Possession to Portion XXIII (Day 483)	0	0%	20-Dec-20		-64																																					
<b>Portion Handover Dates</b>																																											
H120	Vacate Portion XVIb (KD10+28)	0	0%		20-Dec-20*	-167																																					
H130	Vacate Portion XVIa (KD10+28)	0	0%		20-Dec-20*	-167																																					
H140	Vacate Portion XVb (KD9+28)	0	0%		20-Dec-20*	-106																																					
H150	Vacate Portion XVa (KD9+28)	0	0%		20-Dec-20*	-106																																					
H160	Vacate Portion XXIa (KD8+28)	0	0%		20-Dec-20*	-21																																					
H170	Vacate Portion XXIb (KD8+28)	0	0%		20-Dec-20*	-21																																					
H180	Vacate Portion XXII (KD8+28)	0	0%		20-Dec-20*	-21																																					
H190	Vacate Portion XXIII (KD8+28)	0	0%		20-Dec-20*	-21																																					
H200	Vacate Portion XII (KD8+28)	0	0%		20-Dec-20*	-21																																					
H210	Vacate Portion XIII (KD8+28)	0	0%		20-Dec-20*	-21																																					
H220	Vacate Portion XIV (KD8+28)	0	0%		20-Dec-20*	-21																																					
H230	Vacate Portion XVIa (KD8+28)	0	0%		20-Dec-20*	-21																																					
H240	Vacate Portion Ve (KD8+28)	0	0%		20-Dec-20*	-21																																					
H250	Vacate Portion Vc (KD8+28)	0	0%		20-Dec-20*	-21																																					
H260	Vacate Portion VIb (KD8+28)	0	0%		20-Dec-20*	-21																																					
H270	Vacate Portion VIII (KD8+28)	0	0%		20-Dec-20*	-21																																					
H280	Vacate Portion XI (KD8+28)	0	0%		20-Dec-20*	-21																																					
H290	Vacate Portion VII (KD8+28)	0	0%		20-Dec-20*	-21																																					
H300	Vacate Portion IX (KD8+28)	0	0%		20-Dec-20*	-21																																					
H310	Vacate Portion X (KD8+28)	0	0%		20-Dec-20*	-21																																					
H320	Vacate Portion XXIc (KD8+28)	0	0%		20-Dec-20*	-21																																					
H330	Vacate Portion WA6 (KD8+28)	0	0%		20-Dec-20*	-21																																					
H340	Vacate Portion XIX (KD11+28)	0	0%		20-Dec-20*	-64																																					
<b>Key Date 1 - Toll Control Building (TCB) &amp; TCSS Provision</b>																																											
<b>ABWF Works (for All)</b>																																											
ATCB1130	ABWF second fix & final fix	90	100%	27-Aug-19 A	04-Dec-20 A																																						
<b>Key Date 2 - Administration Building, Maintenance Depot, Kiosk N2, TCSS Provision</b>																																											
<b>Administration Building (ADB)</b>																																											
<b>ABWF Works (for All)</b>																																											
AADB1200	ABWF second fix & final fix	90	100%	02-Oct-19 A	04-Dec-20 A																																						
<b>Key Date 6 - E&amp;M Works for Administration Building, Maintenance Depot, North Vent Building, Kiosk N2</b>																																											
<b>Remaining Works</b>																																											
KD6-OSW-1000	Remaining Works (Non FSI related)	42	100%	12-Dec-19 A	23-Dec-20	-31																																					
<b>Key Date 3 - Satellite Control Building &amp; TCSS Provision</b>																																											
<b>ABWF Works (for All)</b>																																											
ASCB1020	ABWF Works to Plant Rooms G/F	60	100%	27-Aug-19 A	26-Nov-20 A																																						
ASCB1070	ABWF second fix & final fix	56	100%	14-Jan-20 A	04-Dec-20 A																																						
<b>Key Date 5 - E&amp;M Works for TCB, Toll Area, Kiosk N1, Underpass, Plant Rm, and Approach Roads</b>																																											
<b>E&amp;M Works for TCB</b>																																											
<b>Remaining Works for TCB (Non-FSI related)</b>																																											
KD5-OSW-1000	Remaining Works (Non FSI related)	42	98%	08-Apr-20 A	24-Dec-20	-32																																					
<b>Key Date 7 - E&amp;M Works for Satellite Control Building and Kiosks S1&amp;S2</b>																																											
<b>E&amp;M Works for Satellite Control Building</b>																																											
<b>E&amp;M Works</b>																																											
<b>Remaining Works for SCB (Non-FSI related)</b>																																											
KD7-OSW-1010	Remaining Works (Non-FSI related)	42	98%	30-May-20 A	23-Dec-20	-31																																					
<b>Key Date 6C - E&amp;M Works for South Ventilation Building</b>																																											
<b>Remaining Works for SVB (Non-FSI related)</b>																																											

CONTRACT NO. HY2017/10  
TM-CLKL NORTHERN CONNECTION TUNNEL BUILDINGS, E&M WORKS  
THREE MONTHLY PROGRAMME AS OF 20 Dec 2020

P 1	Date	Revision	Checked	Approved
	20-Dec-20			



ID	Activity	Duration (Days)	Activity % Complete	Start	Finish	Total Float	2021											
							Jan	Feb	Mar	Apr	May	Jun	Jul	Aug	Sep			
<b>HY2017/10 - Works Programme Three Month Rolling Programme 20-Mar-21</b>																		
<b>Contract Dates</b>																		
<b>Key Dates</b>																		
KD09	KD09 - C&ED Building, E&M Works, & FSD Inspection	0	0%		20-Mar-21*	-223			◆									
KD10	KD10 - FSD Building, E&M Works, & FSD Inspection	0	0%		20-Mar-21*	-284			◆									
KD12	KD12 - Establishment Works	0	0%		17-Sep-21*	0											◆	
<b>Portion Handover Dates</b>																		
H120	Vacate Portion XVIb (KD10+28)	0	0%		20-Mar-21*	-257			◆									
H130	Vacate Portion XVIa (KD10+28)	0	0%		20-Mar-21*	-257			◆									
H140	Vacate Portion XVb (KD9+28)	0	0%		20-Mar-21*	-196			◆									
H150	Vacate Portion XVa (KD9+28)	0	0%		20-Mar-21*	-196			◆									
H340	Vacate Portion XIX (KD11+28)	0	0%		20-Mar-21*	-154			◆									
H350	Vacate Portion WA18 (KD8+365)	0	0%		18-Nov-21*	0												
<b>Key Date 10 - FSD Building Structure &amp; E&amp;M Works</b>																		
<b>E&amp;M Works</b>																		
<b>Statutory Inspections and approvals</b>																		
FSDB-SI1140	KD10 Achieved	0	0%		20-Mar-21	-237			◆									
<b>Key Date 9 - C&amp;ED Building &amp; E&amp;M Works</b>																		
<b>E&amp;M Works</b>																		
<b>Statutory Inspections and approvals</b>																		
C&EDB-SI1140	KD09 Achieved	0	0%		20-Mar-21	-186			◆									
<b>Key Date 12 - Establishment Works</b>																		
EW110	Establishment Works	365	39.45%	05-Dec-20 A	26-Oct-21	-39												
EW120	KD12 Achieved	0	0%		26-Oct-21	-33												

CONTRACT NO. HY2017/10  
 TM-CLKL NORTHERN CONNECTION TUNNEL BUILDINGS, E&M WORKS  
 THREE MONTHLY PROGRAMME AS OF 20 Mar 2021

P 1

Date	Revision	Checked	Approved
20-Mar-21			

## Appendix C

# Environmental Mitigation and Enhancement Measure Implementation Schedules

(In reference to CINOTECH (2011) Agreement No.  
CE35/2011 EP Baseline Environmental Monitoring for  
Hong Kong-Zhuhai-Macao Bridge Tuen Mun-Chek Lap  
Kok Link - Investigation. Updated EM&A Manual for  
Tuen Mun-Chek Lap Kok Link)

**Contract No. HY/2017/10**  
**Tuen Mun – Chek Lap Kok Link**  
**Northern Connection Tunnel Buildings, Electrical and Mechanical Works**  
**Environmental Mitigation and Enhancement Measure Implementation Schedule**

EIA Reference	EM&A Manual Reference	Environmental Protection Measures	Location/ Timing	Implementation Agent	Relevant Standard or Requirement	Implementation Stages			Status *
						D	C	O	
<b>Air Quality</b>									
4.8.1	3.8	Watering of the construction sites in Lantau for 8 times/day and in Tuen Mun for 12 times/day to reduce dust emissions by 87.5% and 91.7% respectively and shall be undertaken.	All areas / throughout construction period	Contractor	TMEIA Avoid dust generation		Y		✓
4.8.1	3.8	The Contractor shall, to the satisfaction of the Engineer, install effective dust suppression measures and take such other measures as may be necessary to ensure that at the Site boundary and any nearby sensitive receiver, dust levels are kept to acceptable levels.	All areas / throughout construction period	Contractor	TMEIA Avoid dust generation		Y		✓
4.8.1	3.8	The Contractor shall not burn debris or other materials on the works areas.	All areas / throughout construction period	Contractor	TMEIA Avoid dust generation		Y		✓
4.8.1	3.8	In hot, dry or windy weather, the watering programme shall maintain all exposed road surfaces and dust sources wet.	All unpaved haul roads / throughout construction period in hot, dry or windy weather	Contractor	TMEIA Avoid smoke impacts and disturbance		Y		↔
4.8.1	3.8	Where breaking of oversize rock/concrete is required, watering shall be implemented to control dust. Water spray shall be used during the handling of fill material at the site and at active cuts, excavation and fill sites where dust is likely to be created.	All areas / throughout construction period	Contractor	TMEIA Avoid dust generation		Y		✓
4.8.1	3.8	Open dropping heights for excavated materials shall be controlled to a maximum height of 2m to minimise the fugitive dust arising from unloading.	All areas / throughout construction period	Contractor	TMEIA Avoid dust generation		Y		✓
4.8.1	3.8	During transportation by truck, materials shall not be loaded to a level higher than the side and tail boards, and shall be dampened or covered before transport.	All areas / throughout construction period	Contractor	TMEIA Avoid dust generation		Y		✓
4.8.1	3.8	Materials having the potential to create dust shall not be loaded to a level higher than the side and tail boards, and shall be covered by a clean tarpaulin. The tarpaulin shall be properly secured and shall extend at least 300mm over the edges of the side and tail boards.	All areas / throughout construction period	Contractor	TMEIA Avoid dust generation		Y		✓
4.8.1	3.8	No earth, mud, debris, dust and the like shall be deposited on public roads. Wheel washing facility shall be usable prior to any earthworks excavation activity on the site.	All site exits / throughout construction period	Contractor	TMEIA Avoid dust		Y		✓

Legend: D=Design, C=Construction, O=Operation

Note: Funding Agent for all mitigation measures will be the Highways Department of the Hong Kong SAR Government

**Contract No. HY/2017/10**  
**Tuen Mun – Chek Lap Kok Link**  
**Northern Connection Tunnel Buildings, Electrical and Mechanical Works**  
**Environmental Mitigation and Enhancement Measure Implementation Schedule**

EIA Reference	EM&A Manual Reference	Environmental Protection Measures	Location/ Timing	Implementation Agent	Relevant Standard or Requirement	Implementation Stages			Status *
						D	C	O	
4.8.1	3.8	Areas of exposed soil shall be minimised to areas in which works have been completed shall be restored as soon as is practicable.	All exposed surfaces / throughout construction period	Contractor	TMEIA Avoid dust generation		Y		✓
4.8.1	3.8	All stockpiles of aggregate or spoil shall be enclosed or covered and water applied in dry or windy condition.	All areas / throughout construction period	Contractor	TMEIA Avoid dust generation		Y		✓
4.11	Section 3	EM&A in the form of 1 hour and 24 hour dust monitoring and site audit.	All representative existing ASRs/ throughout construction period	Contractor	EM&A Manual		Y		N/A (Results adopted from published EM&A data of Contract No. HY.2012/08)
<b>WATER QUALITY (LAND WORKS)</b>									
6.10	-	Wastewater from temporary site facilities should be controlled to prevent direct discharge to surface or marine waters.	All areas/ throughout construction period	Contractor	TM-EIAO		Y		✓
6.10	-	Sewage effluent and discharges from on- site kitchen facilities shall be directed to Government sewer in accordance with the requirements of the WPCO or collected for disposal offsite. The use of soakaways shall be avoided.	All areas/ throughout construction period	Contractor	TM-EIAO		Y		✓
6.10	-	Storm drainage shall be directed to storm drains via adequately designed sand/silt removal facilities such as sand traps, silt traps and sediment basins. Channels, earth bunds or sand bag barriers should be provided on site to properly direct stormwater to such silt removal facilities. Catchpits and perimeter channels should be constructed in advance of site formation works and earthworks.	All areas/ throughout construction period	Contractor	TM-EIAO		Y		✓
6.10	-	Silt removal facilities, channels and manholes shall be maintained and any deposited silt and grit shall be removed regularly, including specifically at the onset of and after each rainstorm.	All areas/ throughout construction period	Contractor	TM-EIAO		Y		✓
6.10	-	Temporary access roads should be surfaced with crushed stone or gravel.	All areas/ throughout construction period	Contractor	TM-EIAO		Y		✓
6.10	-	Rainwater pumped out from trenches or foundation excavations should be discharged into storm drains via silt removal facilities.	All areas/ throughout construction period	Contractor	TM-EIAO		Y		✓

Legend: D=Design, C=Construction, O=Operation

Note: Funding Agent for all mitigation measures will be the Highways Department of the Hong Kong SAR Government



**Contract No. HY/2017/10**  
**Tuen Mun – Chek Lap Kok Link**  
**Northern Connection Tunnel Buildings, Electrical and Mechanical Works**  
**Environmental Mitigation and Enhancement Measure Implementation Schedule**

EIA Reference	EM&A Manual Reference	Environmental Protection Measures	Location/ Timing	Implementation Agent	Relevant Standard or Requirement	Implementation Stages			Status *
						D	C	O	
6.10	-	Measures should be taken to prevent the washout of construction materials, soil, silt or debris into any drainage system.	All areas/ throughout construction period	Contractor	TM-EIAO		Y		✓
6.10	-	Open stockpiles of construction materials (e.g. aggregates and sand) on site should be covered with tarpaulin or similar fabric during rainstorms.	All areas/ throughout construction period	Contractor	TM-EIAO		Y		✓
6.10	5.8	Manholes (including any newly constructed ones) should always be adequately covered and temporarily sealed so as to prevent silt, construction materials or debris from getting into the drainage system, and to prevent storm run-off from getting into foul sewers.	All areas/ throughout construction period	Contractor	TM-EIAO		Y		✓
6.10	-	Discharges of surface run-off into foul sewers must always be prevented in order not to unduly overload the foul sewerage system.	All areas/ throughout construction period	Contractor	TM-EIAO		Y		✓
6.10	-	All vehicles and plant should be cleaned before they leave the construction site to ensure that no earth, mud or debris is deposited by them on roads. A wheel washing bay should be provided at every site exit.	All areas/ throughout construction period	Contractor	TM-EIAO		Y		✓
6.10	-	Wheel wash overflow shall be directed to silt removal facilities before being discharged to the storm drain.	All areas/ throughout construction period	Contractor	TM-EIAO		Y		✓
6.10	-	Section of construction road between the wheel washing bay and the public road should be surfaced with crushed stone or coarse gravel.	All areas/ throughout construction period	Contractor	TM-EIAO		Y		✓
6.10	-	Wastewater generated from concreting, plastering, internal decoration, cleaning work and other similar activities, shall be screened to remove large objects.	All areas/ throughout construction period	Contractor	TM-EIAO		Y		✓
6.10	-	Vehicle and plant servicing areas, vehicle wash bays and lubrication facilities shall be located under roofed areas. The drainage in these covered areas shall be connected to foul sewers via a petrol interceptor in accordance with the requirements of the WPCO or collected for off site disposal.	All areas/ throughout construction period	Contractor	TM-EIAO		Y		N/A
6.10	-	The Contractor shall prepare an oil / chemical cleanup plan and ensure that leakages or spillages are contained and cleaned up immediately.	All areas/ throughout construction period	Contractor	TM-EIAO		Y		✓

Legend: D=Design, C=Construction, O=Operation

Note: Funding Agent for all mitigation measures will be the Highways Department of the Hong Kong SAR Government

**Contract No. HY/2017/10**  
**Tuen Mun – Chek Lap Kok Link**  
**Northern Connection Tunnel Buildings, Electrical and Mechanical Works**  
**Environmental Mitigation and Enhancement Measure Implementation Schedule**

EIA Reference	EM&A Manual Reference	Environmental Protection Measures	Location/ Timing	Implementation Agent	Relevant Standard or Requirement	Implementation Stages			Status *
						D	C	O	
6.10	-	Waste oil should be collected and stored for recycling or disposal, in accordance with the Waste Disposal Ordinance.	All areas/ throughout construction period	Contractor	TM-EIAO Waste Disposal Ordinance		Y		✓
6.10	-	All fuel tanks and chemical storage areas should be provided with locks and be sited on sealed areas. The storage areas should be surrounded by bunds with a capacity equal to 110% of the storage capacity of the largest tank.	All areas/ throughout construction period	Contractor	TM-EIAO		Y		<>
6.10	-	Surface run-off from bunded areas should pass through oil/grease traps prior to discharge to the stormwater system.	All areas/ throughout construction period	Contractor	TM-EIAO		Y		✓
6.10	-	Roadside gullies to trap silt and grit shall be provided prior to discharging the stormwater into the marine environment. The sumps will be maintained and cleaned at regular intervals.	Roadside/ design and operation	Design Consultant/ Contractor	TM-EIAO	Y		Y	✓
6.10	Section 11	All construction works shall be subject to routine audit to ensure implementation of all EIA recommendations and good working practice.	All areas/ throughout construction period	Contractor	EM&A Manual		Y		✓
<b>WASTE</b>									
12.6		The Contractor shall identify a coordinator for the management of waste.	Contract mobilisation	Contractor	TMEIA		Y		✓
12.6		The Contractor shall prepare and implement a Waste Management Plan which specifies procedures such as a ticketing system, to facilitate tracking of loads and to ensure that illegal disposal of wastes does not occur, and protocols for the maintenance of records of the quantities of wastes generated, recycled and disposed. A recording system for the amount of waste generated, recycled and disposed (locations) should be established.	Contract mobilisation	Contractor	TMEIA, Works Branch Technical Circular No. 5/99 for the Trip-ticket System for Disposal of Construction and Demolition Material		Y		✓

Legend: D=Design, C=Construction, O=Operation

Note: Funding Agent for all mitigation measures will be the Highways Department of the Hong Kong SAR Government

**Contract No. HY/2017/10**  
**Tuen Mun – Chek Lap Kok Link**  
**Northern Connection Tunnel Buildings, Electrical and Mechanical Works**  
**Environmental Mitigation and Enhancement Measure Implementation Schedule**

EIA Reference	EM&A Manual Reference	Environmental Protection Measures	Location/ Timing	Implementation Agent	Relevant Standard or Requirement	Implementation Stages			Status *
						D	C	O	
12.6		The Contractor shall apply for and obtain the appropriate licenses for the disposal of public fill, chemical waste and effluent discharges.	Contract mobilisation	Contractor	TMEIA, Land (Miscellaneous Provisions) Ordinance (Cap 28); Waste Disposal Ordinance (Cap 354); Dumping at Sea Ordinance (Cap 466); Water Pollution Control Ordinance.		Y		✓
12.6	8.1	Training shall be provided to workers about the concepts of site cleanliness and appropriate waste management procedures including waste reduction, reuse and recycling.	Contract Mobilisation	Contractor	TMEIA		Y		✓
12.6	8.1	The extent of cutting operation should be optimised where possible. Earth retaining structures and bored pile walls should be proposed to minimise the extent of cutting.	All areas / throughout construction period	Contractor	TMEIA		Y		✓
12.6	8.1	The site and surroundings shall be kept tidy and litter free.	All areas / throughout construction period	Contractor	TMEIA		Y		◊
12.6	8.1	No waste shall be burnt on site.	All areas / throughout construction period	Contractor	TMEIA		Y		✓
12.6	8.1	The Contractor shall be prohibited from disposing of C&D materials at any sensitive locations. The Contractor should propose the final disposal sites in the EMP and WMP for approval before implementation.	All areas / throughout construction period	Contractor	TMEIA		Y		✓
12.6	8.1	Stockpiled material shall be covered by tarpaulin and /or watered as appropriate to prevent windblown dust/ surface run off.	All areas / throughout construction period	Contractor	TMEIA		Y		◊
12.6	8.1	Excavated material in trucks shall be covered by tarpaulins to reduce the potential for spillage and dust generation.	All areas / throughout construction period	Contractor	TMEIA		Y		✓
12.6	8.1	Wheel washing facilities shall be used by all trucks leaving the site to prevent transfer of mud onto public roads.	All areas / throughout construction period	Contractor	TMEIA		Y		◊

Legend: D=Design, C=Construction, O=Operation

Note: Funding Agent for all mitigation measures will be the Highways Department of the Hong Kong SAR Government

**Contract No. HY/2017/10**  
**Tuen Mun – Chek Lap Kok Link**  
**Northern Connection Tunnel Buildings, Electrical and Mechanical Works**  
**Environmental Mitigation and Enhancement Measure Implementation Schedule**

EIA Reference	EM&A Manual Reference	Environmental Protection Measures	Location/ Timing	Implementation Agent	Relevant Standard or Requirement	Implementation Stages			Status *
						D	C	O	
12.6	8.1	Standard formwork or pre-fabrication should be used as far as practicable so as to minimise the C&D materials arising. The use of more durable formwork/plastic facing for construction works should be considered. The use of wooden hoardings should be avoided and metal hoarding should be used to facilitate recycling. Purchasing of construction materials should avoid over-ordering and wastage.	All areas / throughout construction period	Contractor	TMEIA		Y		✓
12.6	8.1	The Contractor should recycle as many C&D materials (this is a waste section) as possible on-site. The public fill and C&D waste should be segregated and stored in separate containers or skips to facilitate the reuse or recycling of materials and proper disposal. Where practicable, the concrete and masonry should be crushed and used as fill materials. Steel reinforcement bar should be collected for use by scrap steel mills. Different areas of the sites should be considered for segregation and storage activities.	All areas / throughout construction period	Contractor	TMEIA		Y		✓
12.6	8.1	All falsework will be steel instead of wood.	All areas / throughout construction period	Contractor	TMEIA		Y		✓
12.6	8.1	Chemical waste producers should register with the EPD. Chemical waste should be handled in accordance with the Code of Practice on the Packaging, Handling and Storage of Chemical Wastes as follows:  <i>f</i> suitable for the substance to be held, resistant to corrosion, maintained in good conditions and securely closed; <i>f</i> Having a capacity of <450L unless the specifications have been approved by the EPD; and <i>w</i> Chinese according to the instructions prescribed in Schedule 2 of the Regulations. <i>f</i> Clearly labelled and used solely for the storage of chemical wastes; <i>f</i> Enclosed with at least 3 sides; <i>f</i> Impermeable floor and bund with	All areas / throughout construction period	Contractor	TMEIA		Y		↔

Legend: D=Design, C=Construction, O=Operation

Note: Funding Agent for all mitigation measures will be the Highways Department of the Hong Kong SAR Government

**Contract No. HY/2017/10**  
**Tuen Mun – Chek Lap Kok Link**  
**Northern Connection Tunnel Buildings, Electrical and Mechanical Works**  
**Environmental Mitigation and Enhancement Measure Implementation Schedule**

EIA Reference	EM&A Manual Reference	Environmental Protection Measures	Location/ Timing	Implementation Agent	Relevant Standard or Requirement	Implementation Stages			Status *
						D	C	O	
		capacity to accommodate 110% of the volume of the largest container or 20% by volume of the chemical waste stored in the area, whichever is greatest; <i>f</i> Adequate ventilation; <i>f</i> Sufficiently covered to prevent rainfall entering (water collected within the bund must be tested and disposed of as chemical waste, if necessary); and <i>f</i> Incompatible materials are adequately separated.							
12.6	8.1	Waste oils, chemicals or solvents shall not be disposed of to drain,	All areas / throughout construction period	Contractor	TMEIA		Y		✓
12.6	8.1	Adequate numbers of portable toilets should be provided for on-site workers. Portable toilets should be maintained in reasonable states, which will not deter the workers from utilising them.	All areas / throughout construction period	Contractor	TMEIA		Y		✓
12.6	8.1	Night soil should be regularly collected by licensed collectors.	All areas / throughout construction period	Contractor	TMEIA		Y		N/A
12.6	8.1	General refuse arising on-site should be stored in enclosed bins or compaction units separately from C&D and chemical wastes. Sufficient dustbins shall be provided for storage of waste as required under the Public Cleansing and Prevention of Nuisances By-laws. In addition, general refuse shall be cleared daily and shall be disposed of to the nearest licensed landfill or refuse transfer station. Burning of refuse on construction sites is prohibited.	All areas / throughout construction period	Contractor	TMEIA		Y		✓
12.6	8.1	All waste containers shall be in a secure area on hardstanding;	All areas / throughout construction period	Contractor	TMEIA		Y		<>
12.6	8.1	Office wastes can be reduced by recycling of paper if such volume is sufficiently large to warrant collection. Participation in a local collection scheme by the Contractor should be advocated. Waste separation facilities for paper, aluminium cans, plastic bottles, etc should be provided on-site.	Site Offices/ throughout construction period	Contractor	TMEIA		Y		✓

Legend: D=Design, C=Construction, O=Operation

Note: Funding Agent for all mitigation measures will be the Highways Department of the Hong Kong SAR Government

**Contract No. HY/2017/10**  
**Tuen Mun – Chek Lap Kok Link**  
**Northern Connection Tunnel Buildings, Electrical and Mechanical Works**  
**Environmental Mitigation and Enhancement Measure Implementation Schedule**

EIA Reference	EM&A Manual Reference	Environmental Protection Measures	Location/ Timing	Implementation Agent	Relevant Standard or Requirement	Implementation Stages			Status *
						D	C	O	
12.6	Section 8	EM&A of waste handling, storage, transportation, disposal procedures and documentation through the site audit programme shall be undertaken.	All areas / throughout construction period	Contractor	EM&A Manual		Y		✓
<b>LANDSCAPE AND VISUAL</b>									
10.9	7.6	Existing trees on boundary of the Project Area shall be carefully protected during construction. Detailed Tree Protection Specification shall be provided in the Contract Specification. Under this specification, the Contractor shall be required to submit, for approval, a detailed working method statement for the protection of trees prior to undertaking any works adjacent to all retained trees, including trees in contractor's works areas (Tree protection measures will be detailed at Tree Removal Application Stage) (CM1)	All areas/detailed design/ during construction	Design Consultant/ Contractor	TMEIA	Y	Y		N/A
10.9	7.6	Trees unavoidably affected by the works shall be transplanted where practical. Trees will be transplanted straight to their final receptor site and not held in a temporary nursery. A detailed Tree Transplanting Specification shall be provided in the Contract Specification. Sufficient time for necessary tree root and crown preparation periods shall be allowed in the project programme (CM2)	All areas/detailed design/ during construction	Design Consultant/ Contractor	TMEIA	Y	Y		N/A
10.9	7.6	Hillside and roadside screen planting to proposed roads, associated structures and slope works (CM3)	All areas/detailed design/ during construction/ post construction	Design Consultant/ Contractor	TMEIA	Y	Y		N/A
10.9	7.6	Hydroseeding or sheeting of soil stockpiles with visually unobtrusive material (in earth tone) (CM4)	All areas/detailed design/ during construction/ post construction	Design Consultant/ Contractor	TMEIA	Y	Y		N/A
10.9	7.6	Screening of construction works by hoardings around works area in visually unobtrusive colours, to screen works (CM5)	All areas/detailed design/ during construction	Design Consultant/ Contractor	TMEIA	Y	Y		N/A
10.9	7.6	Control night-time lighting and glare by hooding all lights (CM6)	All areas/detailed design/ during construction	Design Consultant/ Contractor	TMEIA	Y	Y		N/A
10.9	7.6	Ensure no run-off into water body adjacent to the Project Area (CM7)	All areas/detailed design/ during construction	Design Consultant/ Contractor	TMEIA	Y	Y		N/A
10.9	7.6	Avoidance of excessive height and bulk of buildings and structures (CM8)	All areas/detailed design/ during construction	Design Consultant/ Contractor	TMEIA	Y	Y		✓

Legend: D=Design, C=Construction, O=Operation

Note: Funding Agent for all mitigation measures will be the Highways Department of the Hong Kong SAR Government

**Contract No. HY/2017/10**  
**Tuen Mun – Chek Lap Kok Link**  
**Northern Connection Tunnel Buildings, Electrical and Mechanical Works**  
**Environmental Mitigation and Enhancement Measure Implementation Schedule**

EIA Reference	EM&A Manual Reference	Environmental Protection Measures	Location/ Timing	Implementation Agent	Relevant Standard or Requirement	Implementation Stages			Status *
						D	C	O	
10.9	7.6	Recycle/ Reuse all felled trees and vegetation, e.g. mulching (CM9)	All areas/detailed design/ during construction	Design Consultant/ Contractor	TMEIA	Y	Y		N/A
10.9	7.6	Compensatory tree planting shall be provided to the satisfaction of relevant Government departments. Required numbers and locations of compensatory trees shall be determined and agreed separately with Government during the Tree Felling Application process under ETWBTC 3/2006 (CM10)	All areas/detailed design/ during construction	Design Consultant/ Contractor	TMEIA	Y	Y		N/A
10.9	7.6	Re-vegetation of affected woodland/shrubland with native species (OM1)	All areas/detailed design/ during construction/ during operation	Design Consultant/ Contractor	TMEIA	Y	Y	Y	n/a. To be implemented by AFCD/HyD/L CSD
10.9	7.6	Tall buffer screen tree / shrub / climber planting should be incorporated to soften hard engineering structures and facilities (OM2)	All areas/detailed design/ during construction/ during operation	Design Consultant/ Contractor	TMEIA	Y	Y	Y	n/a. To be implemented by AFCD/HyD/L CSD
10.9	7.6	Streetscape elements (e.g. paving, signage, street furniture, lighting etc.) shall be sensitively designed in a manner that responds to the local context, and minimises potential negative landscape and visual impacts. Lighting units should be directional and minimise unnecessary light spill (OM3)	All areas/detailed design/ during construction / during operation	Design Consultant/ Contractor	TMEIA	Y	Y	Y	n/a. To be implemented by HyD/LCSD
10.9	7.6	Structure, ornamental tree / shrub / climber planting should be provided along roadside amenity strips, central dividers and newly formed slopes to enhance the townscape quality and further greenery enhancement (OM4)	All areas/detailed design/ during construction / during operation	Design Consultant/ Contractor	TMEIA	Y	Y	Y	n/a. To be implemented by HyD/LCSD
10.9	7.6	Aesthetically pleasing design (visually unobtrusive and non-reflective) as regard to the form, material and finishes	All areas/detailed design/ during construction / during operation	Design Consultant/ Contractor	TMEIA	Y	Y	Y	n/a. To be implemented by HyD

**\* Remarks:**

- ✓ Compliance of Mitigation Measures
- <> Compliance of Mitigation but need improvement
- x Non-compliance of Mitigation Measures
- ▲ Non-compliance of Mitigation Measures but rectified by Contractor
- Δ Deficiency of Mitigation Measures but rectified by Contractor
- N/A Not Applicable in Reporting Period

Legend: D=Design, C=Construction, O=Operation

Note: Funding Agent for all mitigation measures will be the Highways Department of the Hong Kong SAR Government

Appendix D

## Summary of Action and Limit Levels



**Table D1** *Action and Limit Levels for 1-hour and 24-hour TSP*

<b>Parameters</b>	<b>Action</b>	<b>Limit</b>
24 Hour TSP Level in $\mu\text{g}/\text{m}^3$	ASR1 = 213 ASR5 = 238 AQMS1 = 213 ASR6 = 238 ASR10 = 214	260
1 Hour TSP Level in $\mu\text{g}/\text{m}^3$	ASR1 = 331 ASR5 = 340 AQMS1 = 335 ASR6 = 338 ASR10 = 337	500

**Table D2** *Actions in the Event of Landfill Gas being Detected in Excavation/ Confined Area*

<b>Parameter</b>	<b>Measurement</b>	<b>Action</b>
Oxygen	< 19%	- Ventilate to restore oxygen to > 19%
	< 18%	- Stop work - Evacuate personnel / prohibit entry - Increase ventilation to restore to > 19%
Methane	> 10% LEL (> 0.5% v/v)	- Prohibit hot work - Ventilate to restore methane to < 10% LEL
	> 20% LEL (>1% v/v)	- Stop work - Evacuate personnel / prohibit entry - Increase ventilation to restore to < 10%
Carbon Dioxide	> 0.5%	- Ventilate to restore oxygen to < 0.5%
	> 1.5%	- Stop work - Evacuate personnel / prohibit entry - Increase ventilation to restore to < 0.5%

Appendix E

## Event Action Plan

*Appendix L1 Event/ Action Plan for Air Quality*

EVENT	ET <sup>(1)</sup>	IEC <sup>(1)</sup>	ACTION	
			ER <sup>(1)</sup>	Contractor
<b>Action Level</b>				
1. Exceedance for one sample	<ol style="list-style-type: none"> <li>1. Identify the source.</li> <li>2. Inform the IEC and the ER.</li> <li>3. Repeat measurement to confirm finding.</li> <li>4. Increase monitoring frequency to daily.</li> </ol>	<ol style="list-style-type: none"> <li>1. Check monitoring data submitted by the ET.</li> <li>2. Check Contractor's working method.</li> </ol>	<ol style="list-style-type: none"> <li>1. Notify Contractor.</li> </ol>	<ol style="list-style-type: none"> <li>1. Rectify any unacceptable practice</li> <li>2. Amend working methods if appropriate</li> </ol>
2. Exceedance for two or more consecutive samples	<ol style="list-style-type: none"> <li>1. Identify the source.</li> <li>2. Inform the IEC and the ER.</li> <li>3. Repeat measurements to confirm findings.</li> <li>4. Increase monitoring frequency to daily.</li> <li>5. Discuss with the IEC and the Contractor on remedial actions required.</li> <li>6. If exceedance continues, arrange meeting with the IEC and the ER.</li> <li>7. If exceedance stops, cease additional monitoring.</li> </ol>	<ol style="list-style-type: none"> <li>1. Check monitoring data submitted by the ET.</li> <li>2. Check the Contractor's working method.</li> <li>3. Discuss with the ET and the Contractor on possible remedial measures.</li> <li>4. Advise the ER on the effectiveness of the proposed remedial measures.</li> <li>5. Supervise implementation of remedial measures.</li> </ol>	<ol style="list-style-type: none"> <li>1. Confirm receipt of notification of failure in writing.</li> <li>2. Notify the Contractor.</li> <li>3. Ensure remedial measures properly implemented.</li> </ol>	<ol style="list-style-type: none"> <li>1. Submit proposals for remedial actions to IEC within 3 working days of notification</li> <li>2. Implement the agreed proposals</li> <li>3. Amend proposal if appropriate</li> </ol>

EVENT	ACTION			
	ET <sup>(1)</sup>	IEC <sup>(1)</sup>	ER <sup>(1)</sup>	Contractor
<b>Limit Level</b>				
1. Exceedance for one sample	<ol style="list-style-type: none"> <li>1. Identify the source.</li> <li>2. Inform the ER and the DEP.</li> <li>3. Repeat measurement to confirm finding.</li> <li>4. Increase monitoring frequency to daily.</li> <li>5. Assess effectiveness of Contractor's remedial actions and keep the IEC, the DEP and the ER informed of the results.</li> </ol>	<ol style="list-style-type: none"> <li>1. Check monitoring data submitted by the ET.</li> <li>2. Check Contractor's working method.</li> <li>3. Discuss with the ET and the Contractor on possible remedial measures.</li> <li>4. Advise the ER on the effectiveness of the proposed remedial measures.</li> <li>5. Supervise implementation of remedial measures.</li> </ol>	<ol style="list-style-type: none"> <li>1. Confirm receipt of notification of failure in writing.</li> <li>2. Notify the Contractor.</li> <li>3. Ensure remedial measures are properly implemented.</li> </ol>	<ol style="list-style-type: none"> <li>1. Take immediate action to avoid further exceedance</li> <li>2. Submit proposals for remedial actions to IEC within 3 working days of notification</li> <li>3. Implement the agreed proposals</li> <li>4. Amend proposal if appropriate</li> </ol>
2. Exceedance for two or more consecutive samples	<ol style="list-style-type: none"> <li>1. Notify the IEC, the ER, the DEP and the Contractor.</li> <li>2. Identify the source.</li> <li>3. Repeat measurements to confirm findings.</li> <li>4. Increase monitoring frequency to daily.</li> <li>5. Carry out analysis of the Contractor's working procedures to determine possible mitigation to be implemented.</li> <li>6. Arrange meeting with the IEC and the ER to discuss the remedial actions to be taken.</li> <li>7. Assess effectiveness of the Contractor's remedial actions</li> </ol>	<ol style="list-style-type: none"> <li>1. Discuss amongst the ER, ET and the Contractor on the potential remedial actions.</li> <li>2. Review the Contractor's remedial actions whenever necessary to assure their effectiveness and advise the ER accordingly.</li> <li>3. Supervise the implementation of remedial measures.</li> </ol>	<ol style="list-style-type: none"> <li>1. Confirm receipt of notification of failure in writing.</li> <li>2. Notify the Contractor.</li> <li>3. In consultation with the IEC, agree with the Contractor on the remedial measures to be implemented.</li> <li>4. Ensure remedial measures are properly implemented.</li> <li>5. If exceedance continues, consider what activity of the work is responsible and instruct the Contractor to stop that activity of work until the exceedance is abated.</li> </ol>	<ol style="list-style-type: none"> <li>1. Take immediate action to avoid further exceedance.</li> <li>2. Submit proposals for remedial actions to IEC within 3 working days of notification.</li> <li>3. Implement the agreed proposals.</li> <li>4. Resubmit proposals if problem still not under control.</li> <li>5. Stop the relevant activity of works as determined by the ER until the exceedance is abated.</li> </ol>

---

and keep the IEC, the DEP and  
the ER informed of the results.

8. If the exceedance stops, cease  
additional monitoring.

---

Abbreviations: ET - Environmental Team, IEC - Independent Environmental Checker, SO - Supervising Office, DEP - Director of Environmental Protection

Appendix F

## EM&A Monitoring Schedule

**HY/2017/10 Tuen Mun - Chek Lap Kok Link - Northern Tunnel Connection Buildings, E&M Works  
Landfill Gas Monitoring Schedule (1 to 31 December 2020)**

Sunday	Monday	Tuesday	Wednesday	Thursday	Friday	Saturday
		01-Dec	02-Dec	03-Dec	04-Dec	05-Dec
		LFG Monitoring (a.m. & p.m.)	LFG Monitoring (a.m. & p.m.)	LFG Monitoring (a.m. & p.m.)	LFG Monitoring (a.m. & p.m.)	LFG Monitoring (a.m. & p.m.)
06-Dec	07-Dec	08-Dec	09-Dec	10-Dec	11-Dec	12-Dec
	LFG Monitoring (a.m. & p.m.)	LFG Monitoring (a.m. & p.m.)	LFG Monitoring (a.m. & p.m.)	LFG Monitoring (a.m. & p.m.)	LFG Monitoring (a.m. & p.m.)	LFG Monitoring (a.m. & p.m.)
13-Dec	14-Dec	15-Dec	16-Dec	17-Dec	18-Dec	19-Dec
	LFG Monitoring (a.m. & p.m.)	LFG Monitoring (a.m. & p.m.)	LFG Monitoring (a.m. & p.m.)	LFG Monitoring (a.m. & p.m.)	LFG Monitoring (a.m. & p.m.)	LFG Monitoring (a.m. & p.m.)
20-Dec	21-Dec	22-Dec	23-Dec	24-Dec	25-Dec	26-Dec
	LFG Monitoring (a.m. & p.m.)	LFG Monitoring (a.m. & p.m.)	LFG Monitoring (a.m. & p.m.)	LFG Monitoring (a.m. & p.m.)		
27-Dec	28-Dec	29-Dec	30-Dec	31-Dec		
	LFG Monitoring (a.m. & p.m.)	LFG Monitoring (a.m. & p.m.)	LFG Monitoring (a.m. & p.m.)	LFG Monitoring (a.m. & p.m.)		

**HY/2017/10 Tuen Mun - Chek Lap Kok Link - Northern Tunnel Connection Buildings, E&M Works  
Landfill Gas Monitoring Schedule (1 to 31 January 2021)**

Sunday	Monday	Tuesday	Wednesday	Thursday	Friday	Saturday
					01-Jan	02-Jan
						LFG Monitoring (a.m. & p.m.)
03-Jan	04-Jan	05-Jan	06-Jan	07-Jan	08-Jan	09-Jan
	LFG Monitoring (a.m. & p.m.)	LFG Monitoring (a.m. & p.m.)	LFG Monitoring (a.m. & p.m.)	LFG Monitoring (a.m. & p.m.)	LFG Monitoring (a.m. & p.m.)	LFG Monitoring (a.m. & p.m.)
10-Jan	11-Jan	12-Jan	13-Jan	14-Jan	15-Jan	16-Jan
	LFG Monitoring (a.m. & p.m.)	LFG Monitoring (a.m. & p.m.)	LFG Monitoring (a.m. & p.m.)	LFG Monitoring (a.m. & p.m.)	LFG Monitoring (a.m. & p.m.)	LFG Monitoring (a.m. & p.m.)
17-Jan	18-Jan	19-Jan	20-Jan	21-Jan	22-Jan	23-Jan
	LFG Monitoring (a.m. & p.m.)	LFG Monitoring (a.m. & p.m.)	LFG Monitoring (a.m. & p.m.)	LFG Monitoring (a.m. & p.m.)	LFG Monitoring (a.m. & p.m.)	LFG Monitoring (a.m. & p.m.)
24-Jan	25-Jan	26-Jan	27-Jan	28-Jan	29-Jan	30-Jan
	LFG Monitoring (a.m. & p.m.)	LFG Monitoring (a.m. & p.m.)	LFG Monitoring (a.m. & p.m.)	LFG Monitoring (a.m. & p.m.)	LFG Monitoring (a.m. & p.m.)	LFG Monitoring (a.m. & p.m.)
31-Jan						



**HY/2017/10 Tuen Mun - Chek Lap Kok Link - Northern Tunnel Connection Buildings, E&M Works  
Landfill Gas Monitoring Schedule (1 to 28 February 2021)**

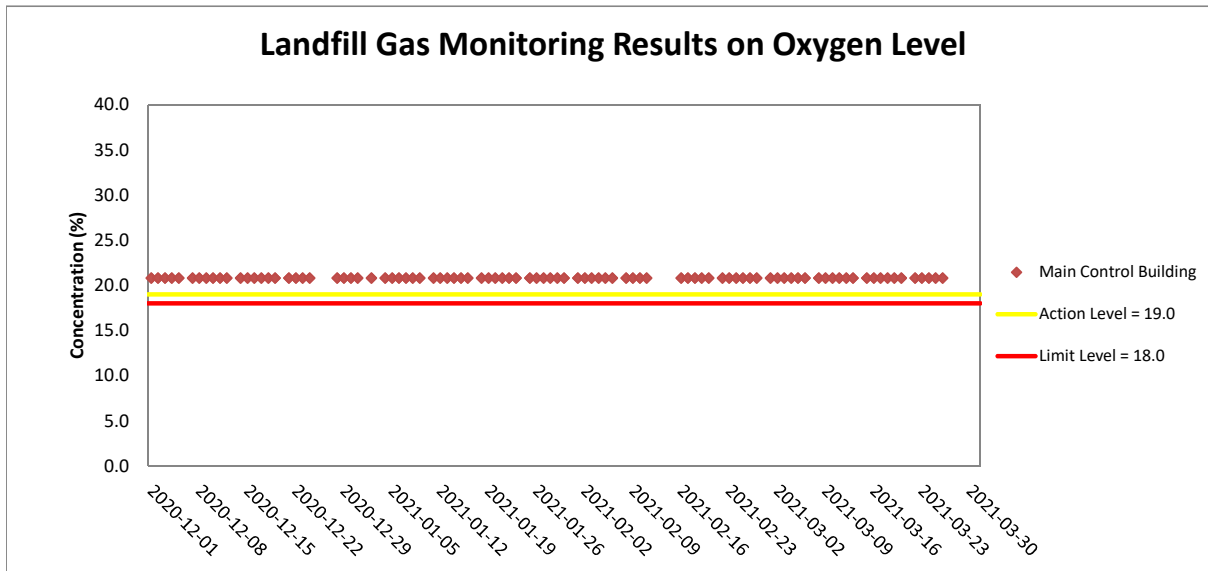
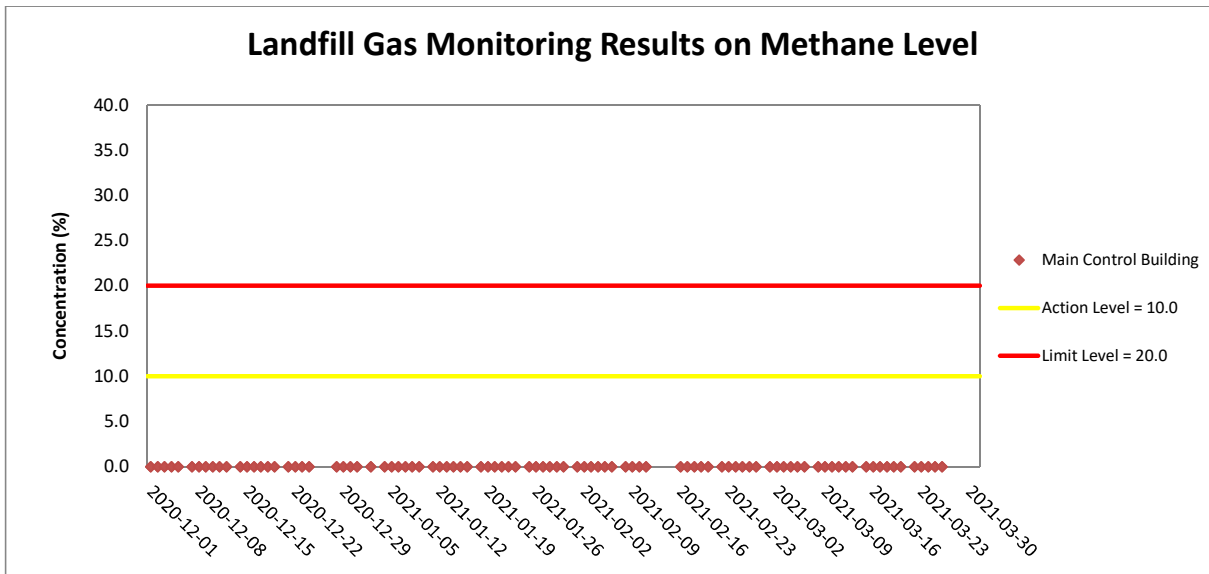
Sunday	Monday	Tuesday	Wednesday	Thursday	Friday	Saturday
	01-Feb	02-Feb	03-Feb	04-Feb	05-Feb	06-Feb
	LFG Monitoring (a.m. & p.m.)	LFG Monitoring (a.m. & p.m.)	LFG Monitoring (a.m. & p.m.)	LFG Monitoring (a.m. & p.m.)	LFG Monitoring (a.m. & p.m.)	LFG Monitoring (a.m. & p.m.)
07-Feb	08-Feb	09-Feb	10-Feb	11-Feb	12-Feb	13-Feb
	LFG Monitoring (a.m. & p.m.)	LFG Monitoring (a.m. & p.m.)	LFG Monitoring (a.m. & p.m.)	LFG Monitoring (a.m. & p.m.)		
14-Feb	15-Feb	16-Feb	17-Feb	18-Feb	19-Feb	20-Feb
		LFG Monitoring (a.m. & p.m.)	LFG Monitoring (a.m. & p.m.)	LFG Monitoring (a.m. & p.m.)	LFG Monitoring (a.m. & p.m.)	LFG Monitoring (a.m. & p.m.)
21-Feb	22-Feb	23-Feb	24-Feb	25-Feb	26-Feb	27-Feb
	LFG Monitoring (a.m. & p.m.)	LFG Monitoring (a.m. & p.m.)	LFG Monitoring (a.m. & p.m.)	LFG Monitoring (a.m. & p.m.)	LFG Monitoring (a.m. & p.m.)	LFG Monitoring (a.m. & p.m.)
28-Feb						

**HY/2017/10 Tuen Mun - Chek Lap Kok Link - Northern Tunnel Connection Buildings, E&M Works  
Landfill Gas Monitoring Schedule (1 to 26 March 2021)**

Sunday	Monday	Tuesday	Wednesday	Thursday	Friday	Saturday
	01-Mar	02-Mar	03-Mar	04-Mar	05-Mar	06-Mar
	LFG Monitoring (a.m. & p.m.)	LFG Monitoring (a.m. & p.m.)	LFG Monitoring (a.m. & p.m.)	LFG Monitoring (a.m. & p.m.)	LFG Monitoring (a.m. & p.m.)	LFG Monitoring (a.m. & p.m.)
07-Mar	08-Mar	09-Mar	10-Mar	11-Mar	12-Mar	13-Mar
	LFG Monitoring (a.m. & p.m.)	LFG Monitoring (a.m. & p.m.)	LFG Monitoring (a.m. & p.m.)	LFG Monitoring (a.m. & p.m.)	LFG Monitoring (a.m. & p.m.)	LFG Monitoring (a.m. & p.m.)
14-Mar	15-Mar	16-Mar	17-Mar	18-Mar	19-Mar	20-Mar
	LFG Monitoring (a.m. & p.m.)	LFG Monitoring (a.m. & p.m.)	LFG Monitoring (a.m. & p.m.)	LFG Monitoring (a.m. & p.m.)	LFG Monitoring (a.m. & p.m.)	LFG Monitoring (a.m. & p.m.)
21-Mar	22-Mar	23-Mar	24-Mar	25-Mar	26-Mar	
	LFG Monitoring (a.m. & p.m.)	LFG Monitoring (a.m. & p.m.)	LFG Monitoring (a.m. & p.m.)	LFG Monitoring (a.m. & p.m.)	LFG Monitoring (a.m. & p.m.)	

Appendix G

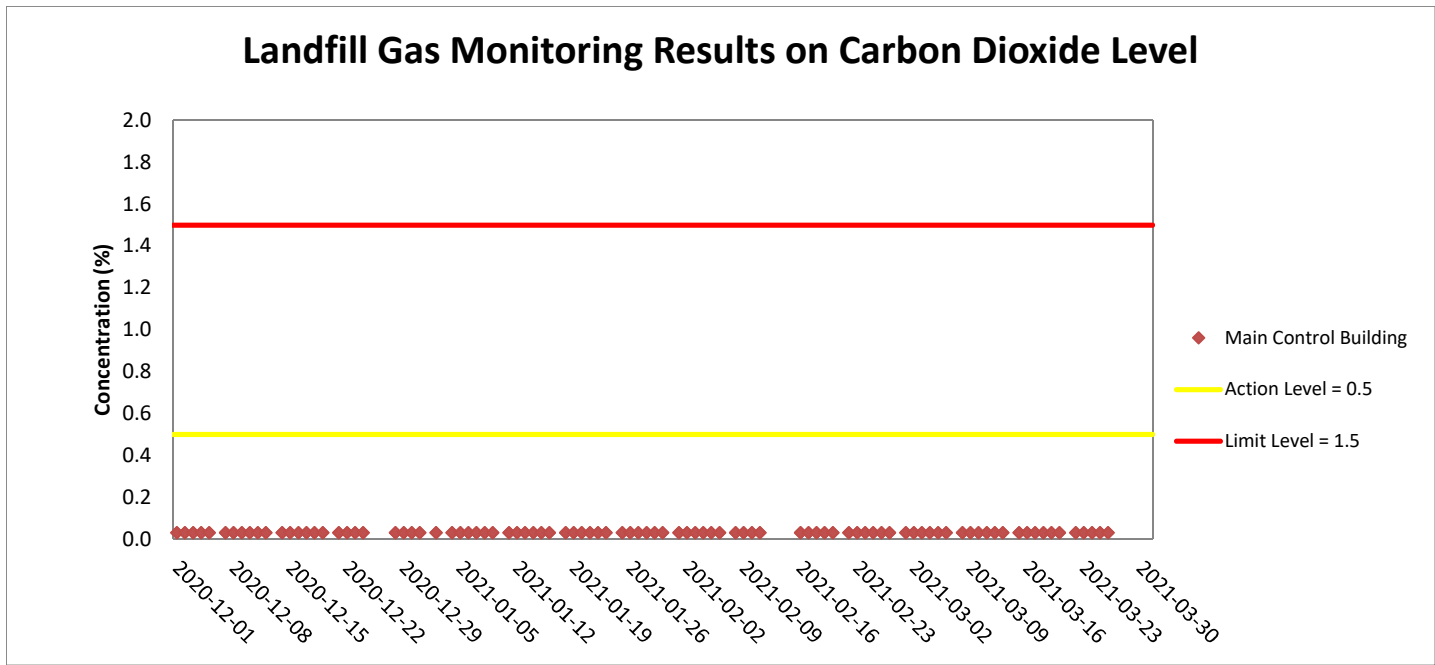
Landfill Gas Monitoring  
Results and Graphical  
Presentation



Weather condition within the reporting period was sunny to rainy

Major construction works undertaken within the reporting period include

- Handover Inspection at Main Control Building;
- Handover Inspection at Ventilation Plant Room;
- Handover Inspection at North Ventilation Building;
- Handover Inspection at Administration Building;
- Handover Inspection at Maintenance Depot;
- Architectural Builder's Work and Finishes Works and Handover Inspection at Fire Services Department Building;
- External Cladding & Louvre Installation, E&M Works, Final Finishing Works and Handover Inspection at Customs and Excise Department Building;
- Handover Inspection at Kiosk N1;
- Handover Inspection at Kiosk N2;
- Handover Inspection at the Tunnel;
- Handover Inspection at C3 area;
- Handover Inspection at Satellite Control Building;
- Handover Inspection at Kiosk S2;
- Handover Inspection at South Ventilation Building;
- Handover Inspection at Northern Landfall and Southern Landfall;
- Minor work at Fire Services Department Building;
- Minor work at Customs and Excise Department Building; and
- Minor work at Kiosk N1, Kiosk N2 and Kiosk S2.



*Weather condition within the reporting period was sunny to rainy*

*Major construction works undertaken within the reporting period include*

- *Handover Inspection at Main Control Building;*
- *Handover Inspection at Ventilation Plant Room;*
- *Handover Inspection at North Ventilation Building;*
- *Handover Inspection at Administration Building;*
- *Handover Inspection at Maintenance Depot;*
- *Architectural Builder’s Work and Finishes Works and Handover Inspection at Fire Services Department Building;*
- *External Cladding & Louvre Installation, E&M Works, Final Finishing Works and Handover Inspection at Customs and Excise Department Building;*
- *Handover Inspection at Kiosk N1;*
- *Handover Inspection at Kiosk N2;*
- *Handover Inspection at the Tunnel;*
- *Handover Inspection at C3 area;*
- *Handover Inspection at Satellite Control Building;*
- *Handover Inspection at Kiosk S2;*
- *Handover Inspection at South Ventilation Building;*
- *Handover Inspection at Northern Landfall and Southern Landfall;*
- *Minor work at Fire Services Department Building;*
- *Minor work at Customs and Excise Department Building; and*
- *Minor work at Kiosk N1, Kiosk N2 and Kiosk S2.*

Appendix H

## Quarterly Summary of Waste Flow Table

Contract No. : HY/2017/10

Tuen Mun Chek Lap Kok Link – Northern Connection Tunnel Buildings, Electrical and Mechanical Works

Monthly Summary Waste Flow Table for 2020 (Year)

Month\Material	Actual Quantities of Inert C&D Materials Generation								Actual Quantities of C&D wastes Generation		Actual Quantities of Recyclables Generation			
	Total Quantity Generated	Hard Rock and Large Broken Concrete			Reused in the Contract	Reused in other Projects	Disposed as Public Fills	Imported Fill	Chemical Waste	General Refuse	Metals	Felled trees	Paper/ cardboard packaging	Plastics
	sub-total	Broken Concrete	Milled Asphalt	sub-total	sub-total	sub-total	sub-total	sub-total						
Unit	('000m <sup>3</sup> )	('000m <sup>3</sup> )	('000m <sup>3</sup> )	('000m <sup>3</sup> )	('000m <sup>3</sup> )	('000m <sup>3</sup> )	('000m <sup>3</sup> )	('000m <sup>3</sup> )	('000Kg)	('000Kg)	('000Kg)	('000Kg)	('000Kg)	('000Kg)
Jan	0.025			0.000	-	-	0.025	-	-	187.500	-	-	0.070	-
Feb	0.074	0.026		0.026	-	-	0.074	-	-	176.100	-	-	0.084	-
Mar	0.650	0.117		0.117	-	-	0.366	0.284	-	237.850	-	-	0.042	-
Apr	0.139			0.000	-	-	0.139	-	-	167.820	-	-	-	-
May	6.431			0.000	-	1.975	0.023	4.433	-	255.300	-	-	0.056	-
Jun	17.433	0.053		0.053	-	0.421	0.087	16.925	-	200.740	-	-	-	-
<b>SUB-TOTAL</b>	<b>24.752</b>	<b>0.196</b>	<b>0.000</b>	<b>0.196</b>	<b>0.000</b>	<b>2.396</b>	<b>0.714</b>	<b>21.642</b>	<b>0.000</b>	<b>1225.310</b>	<b>0.000</b>	<b>0.000</b>	<b>0.252</b>	<b>0.000</b>
Jul	41.112	0.008		0.008	-	6.284	0.103	34.725	-	231.480	-	-	0.056	-
Aug	21.401	0.007		0.007	-	-	0.163	21.238	-	132.420	-	-	0.035	-
Sep	30.658	0.005		0.005	-	-	0.033	30.625	-	89.120	-	-	0.028	-
Oct	1.129	0.011		0.011	-	-	0.210	0.919	-	188.690	-	-	0.028	-
Nov	0.114			-	-	-	0.114	-	-	150.600	-	-	0.014	-
Dec	0.020			-	-	-	0.020	-	-	69.780	-	-	-	-
<b>TOTAL</b>	<b>119.185</b>	<b>0.227</b>	<b>-</b>	<b>0.227</b>	<b>0.000</b>	<b>8.680</b>	<b>1.356</b>	<b>109.149</b>	<b>0.000</b>	<b>2,087.400</b>	<b>0.000</b>	<b>0.000</b>	<b>0.413</b>	<b>0.000</b>

Notes :

- 1 - The waste flow table shall also include C&D materials that are specified in the Contract to be imported for use at the Site.
- 2 - Plastics refer to plastic bottles/containers, plastic sheets/foam from packaging material.
- 3 - Broken concrete for recycling into aggregates.
- 4 - Assumed 5 kg per damaged water-filled barrier.
- 5 - Disposed as Public Fills includes Hard Rock and Large Broken Concrete.

Contract No. : HY/2017/10

**Tuen Mun Chek Lap Kok Link – Northern Connection Tunnel Buildings, Electrical and Mechanical Works  
Monthly Summary Waste Flow Table for 2021 (Year)**

Month/Material	Actual Quantities of Inert C&D Materials Generation										Actual Quantities of C&D wastes Generation		Actual Quantities of Recyclables Generation			
	Total Quantity Generated	Hard Rock and Large Broken Concrete			Reused in the Contract	Reused in other Projects	Disposed as Public Fills			Imported Fill	Chemical Waste	General Refuse	Metals	Felled trees	Paper/ cardboard packaging	Plastics
	sub-total	Broken Concrete	Milled Asphalt	sub-total	sub-total	sub-total	TM38	TKO137	sub-total	sub-total						
Unit	('000m <sup>3</sup> )	('000m <sup>3</sup> )	('000m <sup>3</sup> )	('000m <sup>3</sup> )	('000m <sup>3</sup> )	('000m <sup>3</sup> )	('000m <sup>3</sup> )	('000m <sup>3</sup> )	('000m <sup>3</sup> )	('000m <sup>3</sup> )	('000Kg)	('000Kg)	('000Kg)	('000Kg)	('000Kg)	('000Kg)
Jan	-	-	-	0.000	-	-	-	-	-	-	-	46.750	-	-	-	-
Feb	7.720	-	-	0.000	-	-	7.720	-	7.720	-	-	18.910	-	-	-	-
Mar	-	-	-	0.000	-	-	-	-	-	-	-	31.050	-	-	-	-
Apr																
May																
Jun																
<b>SUB-TOTAL</b>	<b>7.720</b>	<b>0.000</b>	<b>0.000</b>	<b>0.000</b>	<b>0.000</b>	<b>0.000</b>	<b>7.720</b>	<b>0.000</b>	<b>7.720</b>	<b>0.000</b>	<b>0.000</b>	<b>96.710</b>	<b>0.000</b>	<b>0.000</b>	<b>0.000</b>	<b>0.000</b>
Jul																
Aug																
Sep																
Oct																
Nov																
Dec																
<b>TOTAL</b>	<b>7.720</b>	<b>-</b>	<b>-</b>	<b>0.000</b>	<b>0.000</b>	<b>0.000</b>	<b>7.720</b>	<b>-</b>	<b>7.720</b>	<b>0.000</b>	<b>0.000</b>	<b>96.710</b>	<b>0.000</b>	<b>0.000</b>	<b>0.000</b>	<b>0.000</b>

**Notes :**

- 1 - The waste flow table shall also include C&D materials that are specified in the Contract to be imported for use at the Site.
- 2 - Plastics refer to plastic bottles/containers, plastic sheets/foam from packaging material.
- 3 - Broken concrete for recycling into aggregates.
- 4 - Assumed 5 kg per damaged water-filled barrier.
- 5 - Disposed as Public Fills includes Hard Rock and Large Broken Concrete.



Appendix I

Cumulative Statistics on  
Exceedances, Complaints,  
Notifications of Summons  
and Successful Prosecutions

*Appendix I1 Cumulative Statistics on Exceedances*

		Total No. recorded in this reporting quarter	Total No. recorded since contract commencement
1-Hr TSP	Action	3	56
	Limit	0	11
24-Hr TSP	Action	0	4
	Limit	0	0
Landfill gas hazard monitoring			
• Methane	Action	0	0
	Limit	0	0
• Oxygen	Action	0	0
	Limit	0	0
• Carbon Dioxide	Action	0	0
	Limit	0	0

*Appendix I2 Cumulative Statistics on Complaints, Notifications of Summons and Successful Prosecutions*

Reporting Period	Cumulative Statistics		
	Complaints	Notifications of Summons	Successful Prosecutions
This reporting quarter	0	0	0
Total No. received since contract commencement	1	0	0

Email  
message

Environmental  
Resources  
Management

**To** Ramboll Hong Kong Limited (ENPO)

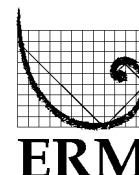
**From** ERM- Hong Kong, Limited

**Ref/Project number** Contract No. HY/2017/10  
Tuen Mun – Chek Lap Kok Link – Northern  
Connection Tunnel Buildings, Electrical and  
Mechanical Works

**Subject** Notification of Exceedance for Air Quality  
Impact Monitoring

**Date** 22 December 2020

2507,  
25/F One Harbourfront,  
18 Tak Fung Street,  
Hung Hom, Hong Kong  
Telephone: (852) 2271 3113  
Facsimile: (852) 2723 5660  
E-mail: jasmine.ng@erm.com



---

Dear Sir/ Madam,

Please find attached the Notification of Exceedance (NOE) of the following  
Log no.:

**Action Level Exceedance**  
0463091\_10December2020\_1hrTSP\_Station ASR5

One (1) exceedance was recorded on 10 December 2020.

Regards,

Dr Jasmine Ng  
*Environmental Team Leader*

---

**CONFIDENTIALITY NOTICE**

This facsimile transmission is intended only for the use of the addressee and is confidential. If you are not the addressee it may be unlawful for you to read, copy, distribute, disclose or otherwise use the information in this facsimile. If you are not the intended recipient, please telephone or fax us immediately.

---



**ERM-Hong Kong, Limited**

**CONTRACT NO. HY/2017/10  
TUEN MUN – CHEK LAP KOK LINK –  
NORTHERN CONNECTION TUNNEL BUILDINGS,  
ELECTRICAL AND MECHANICAL WORKS**

*Air Quality Impact Monitoring*

**Notification of Exceedance**

<b>Log No.</b>	<u>Action Level Exceedance</u> 0463091_10December 2020_1hrTSP_Station ASR5  [Total No. of Exceedances = 1]	
<b>Date</b>	10 December 2020 (Measured) 22 December 2020 (Results obtained from ENPO Website)	
<b>Monitoring Station</b>	ASR5	
<b>Parameter(s) with Exceedance(s)</b>	1 - hr TSP	
<b>Action Levels</b>	1-hr TSP ( $\mu\text{g}/\text{m}^3$ )	ASR1 = 331 ASR5 = 340 ASR6 = 338 ASR10 = 335 AQMS1 = 337
	24-hr TSP ( $\mu\text{g}/\text{m}^3$ )	ASR1 = 213 ASR5 = 238 ASR6 = 238 ASR10 = 214 AQMS1 = 213
<b>Limit Levels</b>	1-hr TSP ( $\mu\text{g}/\text{m}^3$ )	500
	24-hr TSP ( $\mu\text{g}/\text{m}^3$ )	260
<b>Measured Levels</b>	Refer to <i>Appendix A</i> (Data are source from Contract No. HY/2012/08).	
<b>Works Undertaken (at the time of monitoring event)</b>	Works undertaken under this Contract on 10 December 2020 included <ul style="list-style-type: none"> <li>• Indoor Architectural Builder's Work and Finishes works at Fire Services Department Building</li> <li>• External cladding and louvre installation and internal E&amp;M works and final finishing works at Customs and Excise Department Building.</li> </ul>	
<b>Possible Reason for Action or Limit Level Exceedance(s)</b>	The exceedance is unlikely to be due to the Contract, in view of the following: <ul style="list-style-type: none"> <li>• With reference to the recorded wind direction (vary between 13° and 24° and) and wind speed (1.3 m/s), the wind was mainly from north-easterly direction. Haze was observed during the sampling time.</li> <li>• Only minor defect works were conducted which are considered not major dust generating works, thus results of 1-hour TSP at ASR5 was unlikely impacted by the works under this project.</li> <li>• The construction area under this Contract were paved/covered with vegetation. Dust are not anticipated.</li> </ul> Based on the above, the exceedance is unlikely to be due to the Contract.	
<b>Actions Taken / To Be Taken</b>	No immediate action is considered necessary. The ET will monitor for future trends in exceedances.	
<b>Remarks</b>	The monitoring results on 10 December 2020, locations of air quality monitoring stations and wind data are attached (refer to <i>Appendix A</i> ).	

Appendix A

Results of Air Quality  
Monitoring, Meteorological  
Data and Locations of Air  
Quality Monitoring Stations

Air quality monitoring results on 10/12/2020								
Project	Contract	Date	Station	Weather	Start time	Parameters	Results	Unit
TMCLKL	HY/2012/08	2020-12-10	ASR10	Hazy	8:08:00	1-hour TSP	126	ug/m3
TMCLKL	HY/2012/08	2020-12-10	ASR10	Hazy	9:10:00	1-hour TSP	84	ug/m3
TMCLKL	HY/2012/08	2020-12-10	ASR10	Hazy	10:12:00	1-hour TSP	128	ug/m3
TMCLKL	HY/2012/08	2020-12-10	ASR6	Hazy	8:18:00	1-hour TSP	185	ug/m3
TMCLKL	HY/2012/08	2020-12-10	ASR6	Hazy	9:20:00	1-hour TSP	217	ug/m3
TMCLKL	HY/2012/08	2020-12-10	ASR6	Hazy	10:22:00	1-hour TSP	131	ug/m3
TMCLKL	HY/2012/08	2020-12-10	ASR5	Hazy	8:30:00	1-hour TSP	255	ug/m3
TMCLKL	HY/2012/08	2020-12-10	ASR5	Hazy	9:32:00	1-hour TSP	348	ug/m3
TMCLKL	HY/2012/08	2020-12-10	ASR5	Hazy	10:34:00	1-hour TSP	191	ug/m3
TMCLKL	HY/2012/08	2020-12-10	ASR1	Hazy	8:42:00	1-hour TSP	140	ug/m3
TMCLKL	HY/2012/08	2020-12-10	ASR1	Hazy	9:44:00	1-hour TSP	162	ug/m3
TMCLKL	HY/2012/08	2020-12-10	ASR1	Hazy	10:46:00	1-hour TSP	99	ug/m3
TMCLKL	HY/2012/08	2020-12-10	AQMS1	Hazy	8:53:00	1-hour TSP	110	ug/m3
TMCLKL	HY/2012/08	2020-12-10	AQMS1	Hazy	9:55:00	1-hour TSP	114	ug/m3
TMCLKL	HY/2012/08	2020-12-10	AQMS1	Hazy	10:57:00	1-hour TSP	105	ug/m3
TMCLKL	HY/2012/08	2020-12-10	AQMS1	Hazy	11:59:00	24-hour TSP	87	ug/m3
TMCLKL	HY/2012/08	2020-12-10	ASR1	Hazy	11:48:00	24-hour TSP	114	ug/m3
TMCLKL	HY/2012/08	2020-12-10	ASR10	Hazy	11:14:00	24-hour TSP	72	ug/m3
TMCLKL	HY/2012/08	2020-12-10	ASR5	Hazy	11:36:00	24-hour TSP	166	ug/m3
TMCLKL	HY/2012/08	2020-12-10	ASR6	Hazy	11:24:00	24-hour TSP	110	ug/m3

Action level exceedance

Limit level exceedance

**Meteorological Data for Impact Monitoring in the reporting period**

<b>Date (yy-mm-dd)</b>	<b>Time (24hrs)</b>	<b>Average of Wind Speed (m/s)</b>	<b>Average of Wind Direction(degree)</b>
20/12/10	0:00	0.4	102
20/12/10	1:00	0.4	29
20/12/10	2:00	0.4	20
20/12/10	3:00	0.4	30
20/12/10	4:00	0	97
20/12/10	5:00	0.9	351
20/12/10	6:00	0.4	335
20/12/10	7:00	0.4	49
20/12/10	8:00	1.3	12
20/12/10	9:00	1.3	24
20/12/10	10:00	1.3	13
20/12/10	11:00	1.3	19
20/12/10	12:00	1.3	21
20/12/10	13:00	0.9	202
20/12/10	14:00	1.3	192
20/12/10	15:00	1.3	261
20/12/10	16:00	0.9	279
20/12/10	17:00	0.4	96
20/12/10	18:00	0.4	96
20/12/10	19:00	0	85
20/12/10	20:00	0.4	78
20/12/10	21:00	0.9	38
20/12/10	22:00	1.3	101
20/12/10	23:00	1.8	82
20/12/11	0:00	1.8	91
20/12/11	1:00	0.4	87
20/12/11	2:00	0.9	38
20/12/11	3:00	0.9	13
20/12/11	4:00	0.4	16
20/12/11	5:00	0	102
20/12/11	6:00	0	114
20/12/11	7:00	0	103
20/12/11	8:00	0.4	135
20/12/11	9:00	1.3	141
20/12/11	10:00	0.4	130
20/12/11	11:00	0.9	141
20/12/11	12:00	1.3	206
20/12/11	13:00	0.9	203
20/12/11	14:00	1.8	201
20/12/11	15:00	1.3	207
20/12/11	16:00	0.4	276
20/12/11	17:00	0.9	269
20/12/11	18:00	0.4	267
20/12/11	19:00	0.4	274
20/12/11	20:00	0	58
20/12/11	21:00	0	158
20/12/11	22:00	0.4	290
20/12/11	23:00	0.4	306

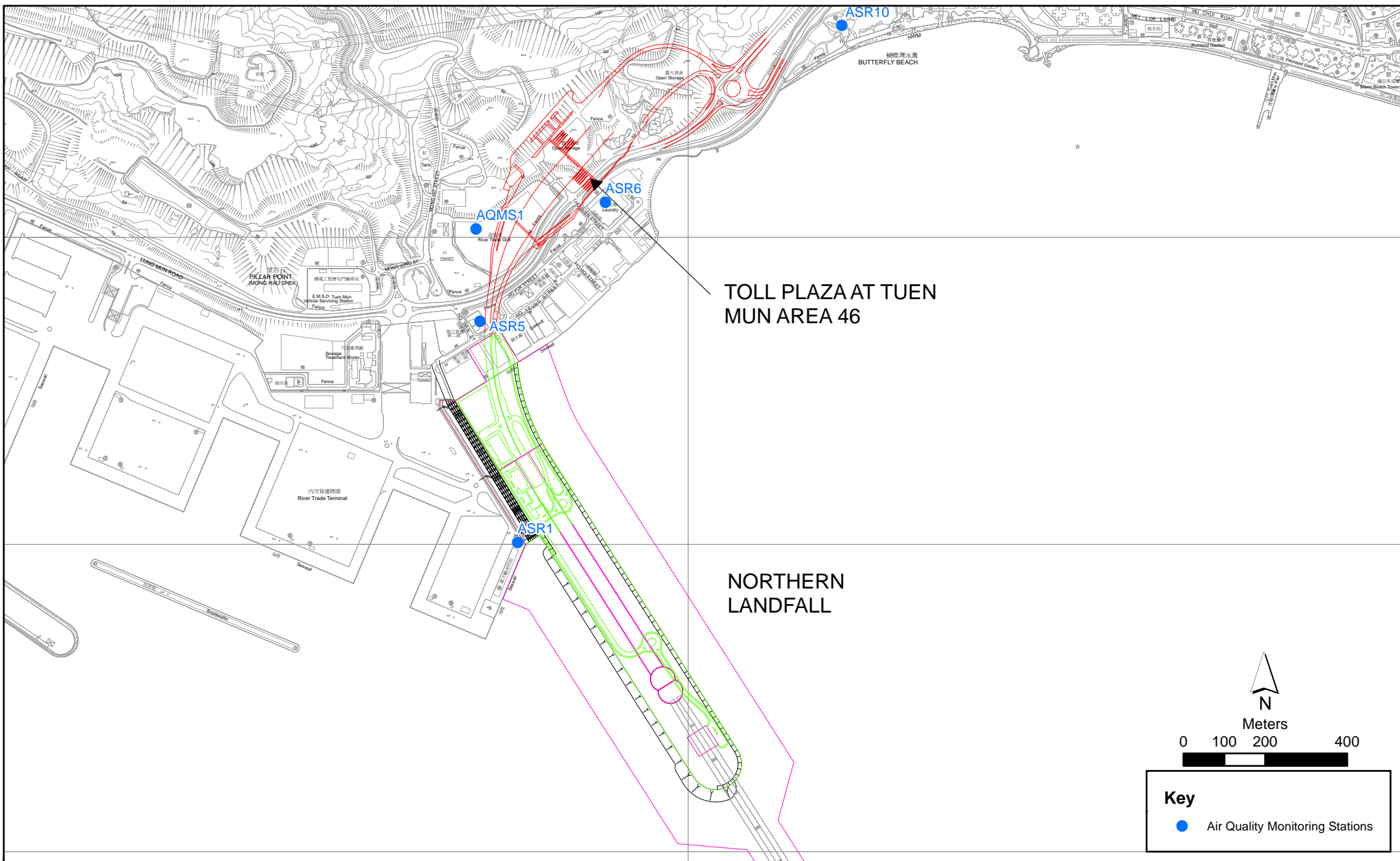


Figure 2.1

Air Quality Monitoring Stations for the Enhanced TSP Monitoring  
 (Source: Adopted from Contract No. HY/2012/08 Tuen Mun-Chek Lap Kok Link -  
 Northern Connection Sub-sea Tunnel Section)



Email  
message

Environmental  
Resources  
Management

**To** Ramboll Hong Kong Limited (ENPO)

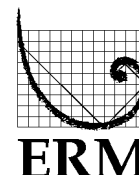
**From** ERM- Hong Kong, Limited

**Ref/Project number** Contract No. HY/2017/10  
Tuen Mun – Chek Lap Kok Link – Northern  
Connection Tunnel Buildings, Electrical and  
Mechanical Works

**Subject** Notification of Exceedance for Air Quality  
Impact Monitoring

**Date** 16 February 2021

2509,  
25/F One Harbourfront,  
18 Tak Fung Street,  
Hung Hom, Hong Kong  
Telephone: (852) 2271 3113  
Facsimile: (852) 2723 5660  
E-mail: jasmine.ng@erm.com



---

Dear Sir/ Madam,

Please find attached the Notification of Exceedance (NOE) of the following  
Log no.:

**Action Level Exceedance**  
0463091\_16February2021\_1hrTSP\_Station ASR5

One (1) exceedance was recorded on 16 February 2021.

Regards,

Dr Jasmine Ng  
*Environmental Team Leader*

---

**CONFIDENTIALITY NOTICE**

This facsimile transmission is intended only for the use of the addressee and is confidential. If you are not the addressee it may be unlawful for you to read, copy, distribute, disclose or otherwise use the information in this facsimile. If you are not the intended recipient, please telephone or fax us immediately.

---



**ERM-Hong Kong, Limited**

**CONTRACT NO. HY/2017/10**

**TUEN MUN – CHEK LAP KOK LINK –  
NORTHERN CONNECTION TUNNEL BUILDINGS,  
ELECTRICAL AND MECHANICAL WORKS**

*Air Quality Impact Monitoring*

**Notification of Exceedance**

<b>Log No.</b>	<u>Action Level Exceedance</u> 0463091_16February2021_1hrTSP_Station ASR5  [Total No. of Exceedances = 1]	
<b>Date</b>	16 February 2021 (Measured) 3 March 2021 (Results obtained from ENPO Website)	
<b>Monitoring Station</b>	ASR5	
<b>Parameter(s) with Exceedance(s)</b>	1 - hr TSP	
<b>Action Levels</b>	1-hr TSP ( $\mu\text{g}/\text{m}^3$ )	ASR1 = 331 ASR5 = 340 ASR6 = 338 ASR10 = 335 AQMS1 = 337
	24-hr TSP ( $\mu\text{g}/\text{m}^3$ )	ASR1 = 213 ASR5 = 238 ASR6 = 238 ASR10 = 214 AQMS1 = 213
<b>Limit Levels</b>	1-hr TSP ( $\mu\text{g}/\text{m}^3$ )	500
	24-hr TSP ( $\mu\text{g}/\text{m}^3$ )	260
<b>Measured Levels</b>	Refer to <i>Appendix A</i> (Data are source from Contract No. HY/2012/08).	
<b>Works Undertaken (at the time of monitoring event)</b>	Works undertaken under this Contract on 16 February 2021 included <ul style="list-style-type: none"> <li>• Defect works at Fire Services Department Building</li> <li>• Final finishing works and Defect works at Customs and Excise Department Building.</li> </ul>	
<b>Possible Reason for Action or Limit Level Exceedance(s)</b>	The exceedance is unlikely to be due to the Contract, in view of the following: <ul style="list-style-type: none"> <li>• With reference to the recorded wind direction (vary between 274° and 277°) and wind speed (0.9 m/s), the wind was mainly from north-westerly direction.</li> <li>• Only minor defect works were conducted which are considered not major dust generating works, thus results of 1-hour TSP at ASR5 was unlikely impacted by the works under this project.</li> <li>• The construction area under this Contract were paved/covered with vegetation. Dust are not anticipated.</li> </ul> Based on the above, the exceedance is unlikely to be due to the Contract.	
<b>Actions Taken/ To Be Taken</b>	No immediate action is considered necessary. The ET will monitor for future trends in exceedances.	
<b>Remarks</b>	The monitoring results on 16 February 2021, locations of air quality monitoring stations and wind data are attached (refer to <i>Appendix A</i> ).	

Appendix A

Results of Air Quality  
Monitoring, Meteorological  
Data and Locations of Air  
Quality Monitoring Stations

Air quality monitoring results on 16/2/2021								
Project	Contract	Date	Station	Weather	Start time	Parameters	Results	Unit
TMCLKL	HY/2012/08	2021-02-16	ASR10	Sunny	13:10:00	1-hour TSP	81	ug/m3
TMCLKL	HY/2012/08	2021-02-16	ASR10	Sunny	14:12:00	1-hour TSP	151	ug/m3
TMCLKL	HY/2012/08	2021-02-16	ASR10	Sunny	15:14:00	1-hour TSP	62	ug/m3
TMCLKL	HY/2012/08	2021-02-16	ASR6	Sunny	13:22:00	1-hour TSP	195	ug/m3
TMCLKL	HY/2012/08	2021-02-16	ASR6	Sunny	14:24:00	1-hour TSP	117	ug/m3
TMCLKL	HY/2012/08	2021-02-16	ASR6	Sunny	15:26:00	1-hour TSP	184	ug/m3
TMCLKL	HY/2012/08	2021-02-16	ASR5	Sunny	13:33:00	1-hour TSP	118	ug/m3
TMCLKL	HY/2012/08	2021-02-16	ASR5	Sunny	14:35:00	1-hour TSP	89	ug/m3
TMCLKL	HY/2012/08	2021-02-16	ASR5	Sunny	15:37:00	1-hour TSP	355	ug/m3
TMCLKL	HY/2012/08	2021-02-16	ASR1	Sunny	13:46:00	1-hour TSP	103	ug/m3
TMCLKL	HY/2012/08	2021-02-16	ASR1	Sunny	14:48:00	1-hour TSP	237	ug/m3
TMCLKL	HY/2012/08	2021-02-16	ASR1	Sunny	15:50:00	1-hour TSP	167	ug/m3
TMCLKL	HY/2012/08	2021-02-16	AQMS1	Sunny	13:58:00	1-hour TSP	100	ug/m3
TMCLKL	HY/2012/08	2021-02-16	AQMS1	Sunny	15:00:00	1-hour TSP	93	ug/m3
TMCLKL	HY/2012/08	2021-02-16	AQMS1	Sunny	16:02:00	1-hour TSP	179	ug/m3
TMCLKL	HY/2012/08	2021-02-16	ASR10	Sunny	16:16:00	24-hour TSP	74	ug/m3
TMCLKL	HY/2012/08	2021-02-16	ASR6	Sunny	16:28:00	24-hour TSP	83	ug/m3
TMCLKL	HY/2012/08	2021-02-16	ASR5	Sunny	16:39:00	24-hour TSP	84	ug/m3
TMCLKL	HY/2012/08	2021-02-16	ASR1	Sunny	16:52:00	24-hour TSP	90	ug/m3
TMCLKL	HY/2012/08	2021-02-16	AQMS1	Sunny	17:04:00	24-hour TSP	87	ug/m3

Action level exceedance

Limit level exceedance

**Meteorological Data for Impact Monitoring in the reporting period**

<b>Date (yy-mm-dd)</b>	<b>Time (24hrs)</b>	<b>Average of Wind Speed (m/s)</b>	<b>Average of Wind Direction(degree)</b>
21/02/16	0:00	1.8	78
21/02/16	1:00	1.8	70
21/02/16	2:00	1.3	86
21/02/16	3:00	1.3	58
21/02/16	4:00	1.3	85
21/02/16	5:00	2.7	100
21/02/16	6:00	2.7	79
21/02/16	7:00	1.8	41
21/02/16	8:00	2.2	56
21/02/16	9:00	2.2	93
21/02/16	10:00	1.8	111
21/02/16	11:00	1.8	129
21/02/16	12:00	1.3	101
21/02/16	13:00	1.3	131
21/02/16	14:00	1.3	196
21/02/16	15:00	0.9	274
21/02/16	16:00	0.9	277
21/02/16	17:00	0.9	198
21/02/16	18:00	0.9	261
21/02/16	19:00	0.9	299
21/02/16	20:00	0.9	324
21/02/16	21:00	0.4	328
21/02/16	22:00	0.4	288
21/02/16	23:00	0.4	273
21/02/17	0:00	1.3	308
21/02/17	1:00	0.9	303
21/02/17	2:00	0	295
21/02/17	3:00	0	303
21/02/17	4:00	0.4	2
21/02/17	5:00	1.3	5
21/02/17	6:00	1.8	18
21/02/17	7:00	2.2	20
21/02/17	8:00	1.8	19
21/02/17	9:00	2.7	32
21/02/17	10:00	1.8	90
21/02/17	11:00	2.2	23
21/02/17	12:00	1.8	33
21/02/17	13:00	1.8	28
21/02/17	14:00	1.8	24
21/02/17	15:00	1.8	144
21/02/17	16:00	0.9	18
21/02/17	17:00	1.3	81
21/02/17	18:00	1.3	78
21/02/17	19:00	1.3	53
21/02/17	20:00	1.3	66
21/02/17	21:00	1.3	38
21/02/17	22:00	1.8	48
21/02/17	23:00	1.8	49

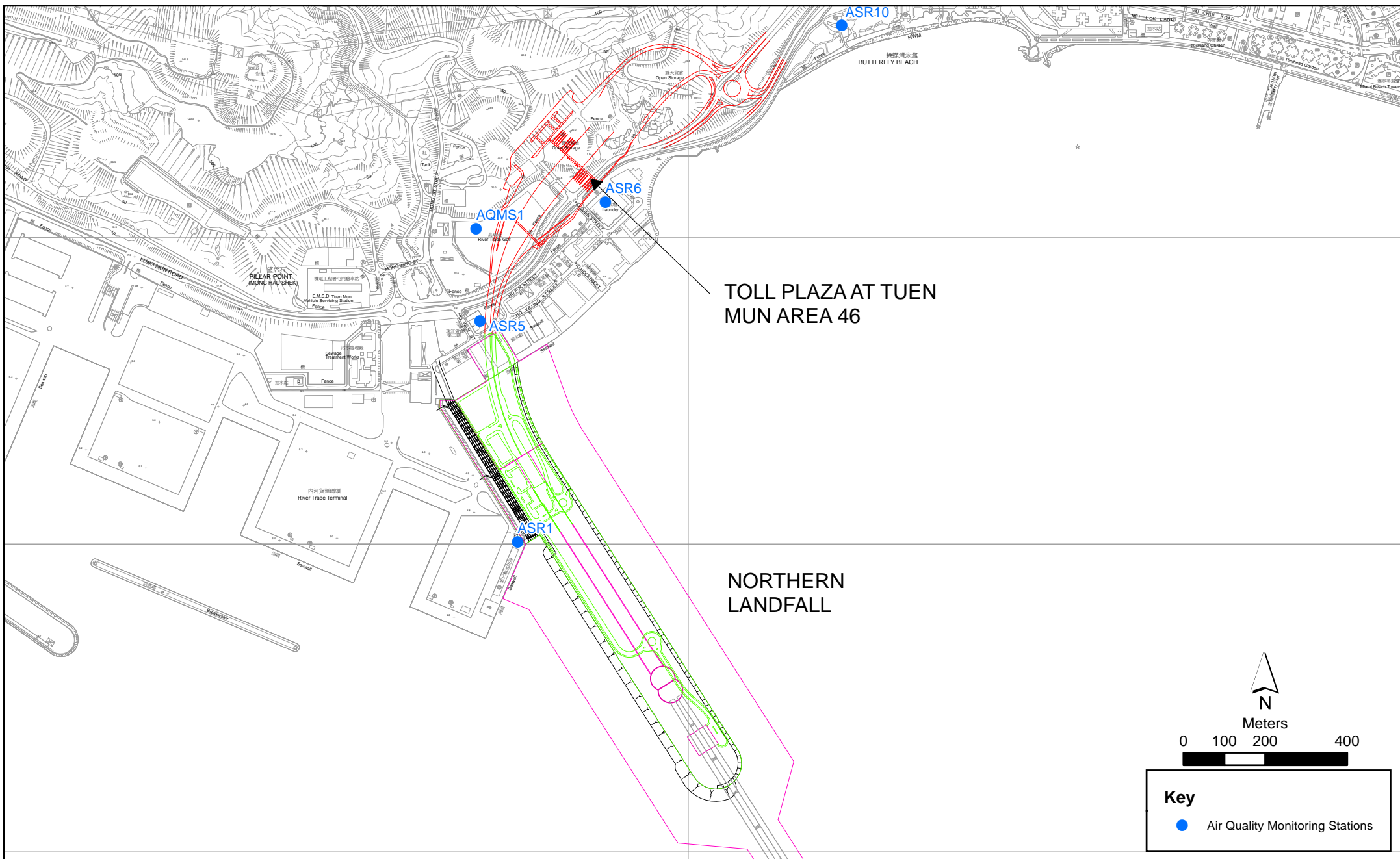


Figure 2.1

Air Quality Monitoring Stations for the Enhanced TSP Monitoring  
 (Source: Adopted from Contract No. HY/2012/08 Tuen Mun-Chek Lap Kok Link -  
 Northern Connection Sub-sea Tunnel Section)

Email  
message

Environmental  
Resources  
Management

**To** Ramboll Hong Kong Limited (ENPO)

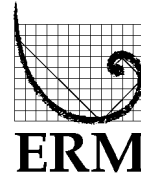
**From** ERM- Hong Kong, Limited

**Ref/Project number** Contract No. HY/2017/10  
Tuen Mun – Chek Lap Kok Link – Northern  
Connection Tunnel Buildings, Electrical and  
Mechanical Works

**Subject** Notification of Exceedance for Air Quality  
Impact Monitoring

**Date** 22 February 2021

2509,  
25/F One Harbourfront,  
18 Tak Fung Street,  
Hung Hom, Hong Kong  
Telephone: (852) 2271 3113  
Facsimile: (852) 2723 5660  
E-mail: jasmine.ng@erm.com



---

Dear Sir/ Madam,

Please find attached the Notification of Exceedance (NOE) of the following  
Log no.:

Action Level Exceedance  
0463091\_22February2021\_1hrTSP\_Station ASR5

One (1) exceedance was recorded on 22 February 2021.

Regards,



Dr Jasmine Ng  
*Environmental Team Leader*

---

**CONFIDENTIALITY NOTICE**

This facsimile transmission is intended only for the use of the addressee and is confidential. If you are not the addressee it may be unlawful for you to read, copy, distribute, disclose or otherwise use the information in this facsimile. If you are not the intended recipient, please telephone or fax us immediately.

---



ERM-Hong Kong, Limited

CONTRACT NO. HY/2017/10  
 TUEN MUN – CHEK LAP KOK LINK –  
 NORTHERN CONNECTION TUNNEL BUILDINGS,  
 ELECTRICAL AND MECHANICAL WORKS

*Air Quality Impact Monitoring*

**Notification of Exceedance**

<b>Log No.</b>	<u>Action Level Exceedance</u> 0463091_22February2021_1hrTSP_Station ASR5	
	[Total No. of Exceedances = 1]	
<b>Date</b>	22 February 2021 (Measured) 3 March 2021 (Results obtained from ENPO Website)	
<b>Monitoring Station</b>	ASR5	
<b>Parameter(s) with Exceedance(s)</b>	1 - hr TSP	
<b>Action Levels</b>	1-hr TSP ( $\mu\text{g}/\text{m}^3$ )	ASR1 = 331 ASR5 = 340 ASR6 = 338 ASR10 = 335 AQMS1 = 337
	24-hr TSP ( $\mu\text{g}/\text{m}^3$ )	ASR1 = 213 ASR5 = 238 ASR6 = 238 ASR10 = 214 AQMS1 = 213
<b>Limit Levels</b>	1-hr TSP ( $\mu\text{g}/\text{m}^3$ )	500
	24-hr TSP ( $\mu\text{g}/\text{m}^3$ )	260
<b>Measured Levels</b>	Refer to <i>Appendix A</i> (Data are source from Contract No. HY/2012/08).	
<b>Works Undertaken (at the time of monitoring event)</b>	Works undertaken under this Contract on 22 February 2021 included <ul style="list-style-type: none"> <li>• Defect works at Fire Services Department Building</li> <li>• Final finishing works and Defect works at Customs and Excise Department Building.</li> </ul>	
<b>Possible Reason for Action or Limit Level Exceedance(s)</b>	<p>The exceedance is unlikely to be due to the Contract, in view of the following:</p> <ul style="list-style-type: none"> <li>• With reference to the recorded wind direction (vary between 211° and 212°) and wind speed (vary between 1.3 and 1.8 m/s), the wind was mainly from south-westerly direction.</li> <li>• Only minor defect works were conducted which are considered not major dust generating works, thus results of 1-hour TSP at ASR5 was unlikely impacted by the works under this project.</li> <li>• The construction area under this Contract were paved/covered with vegetation. Dust are not anticipated.</li> </ul> <p>Based on the above, the exceedance is unlikely to be due to the Contract.</p>	
<b>Actions Taken / To Be Taken</b>	No immediate action is considered necessary. The ET will monitor for future trends in exceedances.	
<b>Remarks</b>	The monitoring results on 22 February 2021, locations of air quality monitoring stations and wind data are attached (refer to <i>Appendix A</i> ).	



Appendix A

Results of Air Quality  
Monitoring, Meteorological  
Data and Locations of Air  
Quality Monitoring Stations

Air quality monitoring results on 22/2/2021								
Project	Contract	Date	Station	Weather	Start time	Parameters	Results	Unit
TMCLKL	HY/2012/08	2021-02-22	ASR10	Sunny	13:10:00	1-hour TSP	97	ug/m3
TMCLKL	HY/2012/08	2021-02-22	ASR10	Sunny	14:12:00	1-hour TSP	90	ug/m3
TMCLKL	HY/2012/08	2021-02-22	ASR10	Sunny	15:14:00	1-hour TSP	147	ug/m3
TMCLKL	HY/2012/08	2021-02-22	ASR6	Sunny	13:22:00	1-hour TSP	113	ug/m3
TMCLKL	HY/2012/08	2021-02-22	ASR6	Sunny	14:24:00	1-hour TSP	97	ug/m3
TMCLKL	HY/2012/08	2021-02-22	ASR6	Sunny	15:26:00	1-hour TSP	203	ug/m3
TMCLKL	HY/2012/08	2021-02-22	ASR5	Sunny	13:34:00	1-hour TSP	136	ug/m3
TMCLKL	HY/2012/08	2021-02-22	ASR5	Sunny	14:36:00	1-hour TSP	139	ug/m3
TMCLKL	HY/2012/08	2021-02-22	ASR5	Sunny	15:38:00	1-hour TSP	472	ug/m3
TMCLKL	HY/2012/08	2021-02-22	ASR1	Sunny	13:47:00	1-hour TSP	128	ug/m3
TMCLKL	HY/2012/08	2021-02-22	ASR1	Sunny	14:49:00	1-hour TSP	209	ug/m3
TMCLKL	HY/2012/08	2021-02-22	ASR1	Sunny	15:51:00	1-hour TSP	171	ug/m3
TMCLKL	HY/2012/08	2021-02-22	AQMS1	Sunny	13:58:00	1-hour TSP	99	ug/m3
TMCLKL	HY/2012/08	2021-02-22	AQMS1	Sunny	15:00:00	1-hour TSP	113	ug/m3
TMCLKL	HY/2012/08	2021-02-22	AQMS1	Sunny	16:02:00	1-hour TSP	154	ug/m3
TMCLKL	HY/2012/08	2021-02-22	ASR10	Sunny	16:16:00	24-hour TSP	62	ug/m3
TMCLKL	HY/2012/08	2021-02-22	ASR6	Sunny	16:28:00	24-hour TSP	76	ug/m3
TMCLKL	HY/2012/08	2021-02-22	ASR5	Sunny	16:40:00	24-hour TSP	83	ug/m3
TMCLKL	HY/2012/08	2021-02-22	ASR1	Sunny	16:53:00	24-hour TSP	86	ug/m3
TMCLKL	HY/2012/08	2021-02-22	AQMS1	Sunny	17:04:00	24-hour TSP	69	ug/m3

Action level exceedance

Limit level exceedance

**Meteorological Data for Impact Monitoring in the reporting period**

<b>Date (yy-mm-dd)</b>	<b>Time (24hrs)</b>	<b>Average of Wind Speed (m/s)</b>	<b>Average of Wind Direction(degree)</b>
21/02/22	0:00	0.9	45
21/02/22	1:00	0.4	45
21/02/22	2:00	0	32
21/02/22	3:00	0	21
21/02/22	4:00	0	19
21/02/22	5:00	0	14
21/02/22	6:00	0.4	358
21/02/22	7:00	0.4	307
21/02/22	8:00	0.9	138
21/02/22	9:00	0.9	126
21/02/22	10:00	0.9	183
21/02/22	11:00	1.3	203
21/02/22	12:00	1.8	233
21/02/22	13:00	1.3	236
21/02/22	14:00	1.8	203
21/02/22	15:00	1.8	211
21/02/22	16:00	1.3	212
21/02/22	17:00	1.3	67
21/02/22	18:00	1.3	60
21/02/22	19:00	1.3	71
21/02/22	20:00	1.3	50
21/02/22	21:00	0.9	60
21/02/22	22:00	0.4	57
21/02/22	23:00	0.4	35
21/02/23	0:00	0.4	46
21/02/23	1:00	0.9	322
21/02/23	2:00	0.4	328
21/02/23	3:00	0.4	341
21/02/23	4:00	0	303
21/02/23	5:00	0	322
21/02/23	6:00	0.4	308
21/02/23	7:00	0	317
21/02/23	8:00	0	113
21/02/23	9:00	1.3	218
21/02/23	10:00	1.3	193
21/02/23	11:00	0.9	130
21/02/23	12:00	1.8	210
21/02/23	13:00	1.8	200
21/02/23	14:00	1.3	230
21/02/23	15:00	2.2	100
21/02/23	16:00	2.7	92
21/02/23	17:00	3.1	104
21/02/23	18:00	2.2	86
21/02/23	19:00	2.2	97
21/02/23	20:00	2.7	94
21/02/23	21:00	2.7	87
21/02/23	22:00	2.2	98
21/02/23	23:00	2.7	81

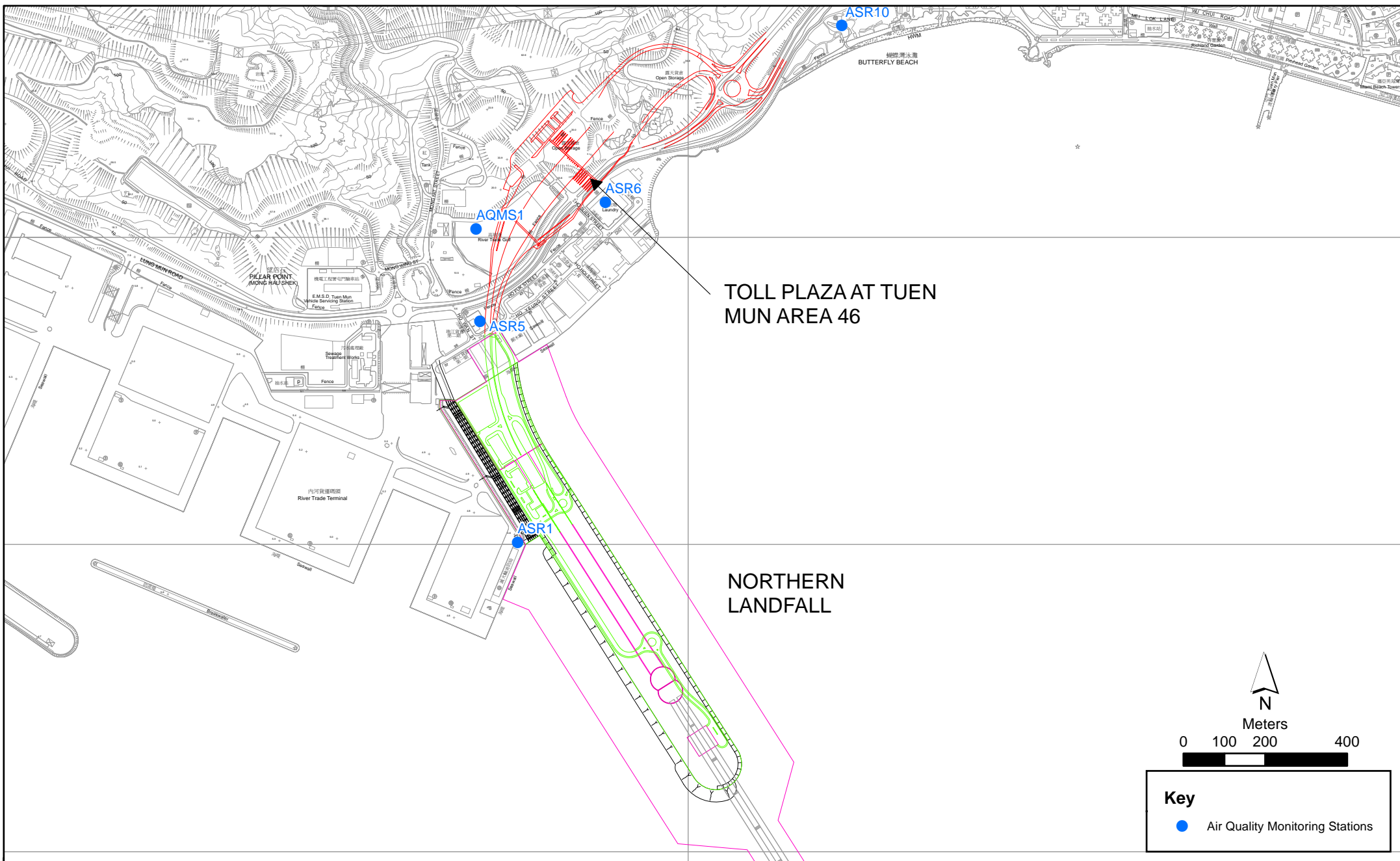


Figure 2.1

Air Quality Monitoring Stations for the Enhanced TSP Monitoring  
 (Source: Adopted from Contract No. HY/2012/08 Tuen Mun-Chek Lap Kok Link -  
 Northern Connection Sub-sea Tunnel Section)