



中國港灣工程有限責任公司

香港代表： 振華工程有限公司

CHINA HARBOUR ENGINEERING COMPANY LIMITED  
HONG KONG REPRESENTATIVE: ZHEN HUA ENGINEERING CO., LTD.

Date : 11 January 2016

Our Ref : CHEC300/OUT/2016/01/04.05/004065

**AECOM Asia Company Limited**  
8/F Grand Central Plaza  
Tower 2, 138 Shatin Rural Committee Road  
Shatin, Hong Kong

Attn : **Mr. Michael Tovey**  
**The Engineer's Representative**


Dear Sir,

**Contract No. HY/2013/03**  
**Hong Kong-Zhuhai-Macao Bridge**  
**Hong Kong Boundary Crossing Facilities – Vehicle Clearance Plazas and Ancillary Buildings and Facilities**  
**EP Condition 5.4 – Quarterly EM&A Report (September - November 2015)**

Pursuant to the Condition 5.4 of the EP-353/2009/I, we are pleased to submit one soft copy and three copies of the certified Quarterly EM&A Report (Rev.1) for September to November 2015 for your on-ward submission.

Thank you for your kind attention.

Yours faithfully,  
For and on behalf of  
**China Harbour Engineering Co. Ltd.**

  
Paul Pui  
Site Agent

JK/PP/FH/MC/VM/mhk

Encl.

**MATERIALAB CONSULTANTS LIMITED**

Room 723 & 725, 7/F, Block B,  
Profit Industrial Building,  
1-15 Kwai Fung Crescent, Kwai Fong,  
Hong Kong.

Tel : (852)-24508238  
Fax : (852)-24508032  
Email : mcl@fugro.com.hk

**Materialab**

Report No.: 0165/15/ED/0213

**QUARTERLY ENVIRONMENTAL MONITORING & AUDIT  
REPORT (Rev.1)**

**September 2015 to November 2015**

**Client:** China Harbour Engineering Co., Ltd.

**Project:** Contract No. HY/2013/03  
Hong Kong-Zhuhai-Macao Bridge  
Hong Kong Boundary Crossing Facilities -  
Vehicle Clearance Plazas and  
Ancillary Buildings and Facilities

**Report No.:** 0165/15/ED/0213

Prepared by: Sandra Pang

Reviewed by: Bong Yu

Certified by:



Arthur Cheng  
Environmental Team Leader

## MATERIALAB CONSULTANTS LIMITED

Room 723 & 725, 7/F, Block B,  
Profit Industrial Building,  
1-15 Kwai Fung Crescent, Kwai Fong,  
Hong Kong  
Tel : +852-2450 8238  
Fax : +852-2450 8032  
E-mail : mcl@fugro.com.hk  
Website : www.materialab-consultant.com

Date 5 January 2016  
Our Ref. MCL/ED/0005/2016/C

Ramboll Environ Hong Kong Limited  
(formerly ENVIRON Hong Kong Limited)  
Room 2403, 24/F, Jubilee Centre,  
18 Fenwick Street, Wan Chai,  
Hong Kong

BY HAND

Attn.: Mr. Raymond Dai, IEC

Dear Sir,

**Quarterly EM&A Report for September 2015 to November 2015  
Hong Kong-Zhuhai-Macao Bridge Hong Kong Boundary Crossing Facilities –  
Vehicle Clearance Plazas and Ancillary Buildings and Facilities (Contract No. HY/2013/03)**

Pursuant to Section 16.4 of the updated EM&A Manual for Hong Kong Boundary Crossing Facilities (Version 1.0) covering the captioned contract, we are pleased to submit the certified Quarterly EM&A Report for September 2015 to November 2015 (Rev.1) for your verification.

Should you require further information, please do not hesitate to contact our Ms Sandra Pang at 3565 4485 or the undersigned at 3565 4115.

Yours faithfully,  
for and on behalf of  
MATERIALAB CONSULTANTS LIMITED

  
\_\_\_\_\_  
Arthur Cheng  
Environmental Team Leader

AC/by

Encl.

c.c. AECOM – Mr. P.K. Lee, Mr. W.S. Ng, Ms. Miranda Wong  
CHEC – Mr. Paul Pui, Mr. Marko Chan  
Ramboll Environ – Mr. Ray Yan, Mr. Andy Wong

## **MATERIALAB CONSULTANTS LIMITED**

Room 723 & 725, 7/F, Block B,  
Profit Industrial Building,  
1-15 Kwai Fung Crescent, Kwai Fong,  
Hong Kong.

Tel : (852)-24508238  
Fax : (852)-24508032  
Email : mcl@fugro.com.hk

The logo for MaterialLab, featuring the word "MaterialLab" in a bold, sans-serif font. The text is white and set against a black rectangular background with horizontal lines above and below the text.

---

Report No.: 0165/15/ED/0213

### **APPENDICES**

- A Location of Works Areas
- B Project Organization for Environmental Works
- C Construction Program
- D Event / Action Plan
- E Implementation Schedule for Environmental Mitigation Measures (EMIS)
- F Site Audit Findings and Corrective Actions
- G Waste Flow Table
- H Environmental Licenses and Permits
- I Statistics on Environmental Complaints, Notification of Summons and Successful Prosecutions

### **FIGURES**

- Figure 1 Air Quality Monitoring Stations
- Figure 2 Noise Monitoring Stations

## MATERIALAB CONSULTANTS LIMITED

Room 723 & 725, 7/F, Block B,  
Profit Industrial Building,  
1-15 Kwai Fung Crescent, Kwai Fong,  
Hong Kong.

Tel : (852)-24508238  
Fax : (852)-24508032  
Email : mcl@fugro.com.hk

The logo for MaterialLab, featuring the word "MaterialLab" in a bold, black, sans-serif font. The text is centered between two thick, horizontal black bars.

Report No.: 0165/15/ED/0213

There was no Action and Limit Level exceedance for noise recorded at station NMS2 and station NMS3B by the Environmental Team of Contract No. HY/2010/02 during the reporting period.

There was no marine works conducted during the reporting period and therefore, no water quality impact monitoring result is reported.

There was no marine transportation and operation during the reporting period and therefore, no ecology monitoring result is reported.

### Complaint Log

There was one complaint received in relation to the environmental impact during the reporting period.

Log No.	Environmental Complaint Ref. No.	Date of Complaint Receipt	Description
001	ENPO-C0093	23 October 2015	Air & Noise

After investigation, it was concluded that the complaint was not related to Contract No. HY/2013/03.

### Notifications of Summons and Successful Prosecutions

There were no notifications of summons or prosecutions received during this reporting period.

### Reporting Changes

There was no reporting change during the reporting period.

## MATERIALAB CONSULTANTS LIMITED

Room 723 & 725, 7/F, Block B,  
Profit Industrial Building,  
1-15 Kwai Fung Crescent, Kwai Fong,  
Hong Kong.

Tel : (852)-24508238  
Fax : (852)-24508032  
Email : mcl@fugro.com.hk



Report No.: 0165/15/ED/0213

### 1.3 Construction Programme

1.3.1 The Construction Works Programme of the Project is provided in **Appendix C**.

### 1.4 Construction Works undertaken during the Reporting Period

1.4.1 A summary of the construction activities undertaken during this reporting period is shown below:

#### September 2015

- Site Investigation at Portion A1 & G; and
- Building and Drainage Works at Portion A1

#### October 2015

- Site Investigation at Portion A1, A2 & G;
- Piling, Building & Drainage at Portion A1; and
- CUE Construction at Portion B.

#### November 2015

- Site Investigation at Portion A1, A2 & G;
- Piling, Building & Drainage at Portion A1; and
- CUE Construction at Portion B.

## MATERIALAB CONSULTANTS LIMITED

Room 723 & 725, 7/F, Block B,  
Profit Industrial Building,  
1-15 Kwai Fung Crescent, Kwai Fong,  
Hong Kong.

Tel : (852)-24508238  
Fax : (852)-24508032  
Email : mcl@fugro.com.hk



Report No.: 0165/15/ED/0213

- 2.3.2 If exceedance(s) at these stations is/are recorded by the ET of the Contract or referred by the other ET under the HZMB project to the Contract, the ET of the Contract will carry out an investigation and findings will be reported in the quarterly EM&A Report.
- 2.3.3 The Action and Limit Levels for construction noise are defined in **Table 2.4**.

Table 2.4 Action and Limit Level for Construction Noise

Monitoring Station	Action Level	Limit Level
<b>For the Time Period 0700-1900 hrs. on Normal Weekdays</b>		
NMS2	When one documented complaint is received	75.0 dB (A) Leq (30 min.)
NMS3B		70.0 dB (A) Leq (30 min.)*

Notes: If works are to be carried out during restricted hours, the conditions stipulated in the construction noise permit issued by the Noise Control Authority have to be followed.

\* Reduce to 70 dB(A) for schools and 65 dB(A) during school examination period.

- 2.3.4 If exceedance(s) at these stations is/are recorded by the ET of the Contract or referred by the other ET under the HZMB project to the Contract, the ET of the Contract will carry out an investigation and findings will be reported in the quarterly EM&A Report.

## 2.4 Event and Action Plans

- 2.4.1 The event and action plans for air quality and noise are provided in **Appendix D**.

## 2.5 Mitigation Measures

- 2.5.1 Environmental mitigation measures for the contract were recommended in the approved EIA Report. **Appendix E** lists the recommended mitigation measures and the implementation status.

## MATERIALAB CONSULTANTS LIMITED

Room 723 & 725, 7/F, Block B,  
Profit Industrial Building,  
1-15 Kwai Fung Crescent, Kwai Fong,  
Hong Kong.

Tel : (852)-24508238  
Fax : (852)-24508032  
Email : mcl@fugro.com.hk



Report No.: 0165/15/ED/0213

### 3.5 Implementation of Environmental Measures

- 3.5.1 In response to the site audit findings, the Contractor carried out corrective actions. Details of site audit findings and the corrective actions during the reporting period are presented in **Appendix F**.
- 3.5.2 A summary of the Implementation Schedule of Environmental Mitigation Measures (EMIS) is presented in **Appendix E**. All necessary mitigation measures at this stage of works were implemented properly.

### 3.6 Advice on the Solid and Liquid Waste Management Status

- 3.6.1 The Contractor registered as a chemical waste producer for the Contract. Sufficient numbers of receptacles were available for general refuse collection and sorting.
- 3.6.2 There was no generation of excavated sediment for treatment during this reporting period. Excavated marine sediment will be treated using cement solidification/stabilization (Cement S/S) techniques and will be reused onsite for either backfilling or landscaping (e.g. berm material). If off-site disposal is required, the excavated marine mud from the land-based works shall be disposed of at the designated disposal sites within Hong Kong as allocated by the Marine Fill Committee or other locations as agreed by the Director. The Contractor shall ensure no spilling and overflowing of materials during loading / unloading / transportation is allowed.
- 3.6.3 The summary of waste flow table is detailed in **Appendix G**.
- 3.6.4 The site activities include site clearance works, erection of site office at WA3, ground investigation at Portion G and site preparation work at Portion A1 contributed to the waste disposal during June 2015 to August 2015 prior to construction work commencement. These site activities generated 0.505 (in'000m<sup>3</sup>) of Inert C & D Materials and 0.136 (in'000m<sup>3</sup>) of Non-inert C & D Wastes during June 2015 to August 2015.

### 3.7 Environmental Licences and Permits

- 3.7.1 The valid environmental licences and permits during the reporting period are summarized in **Appendix H**.



## MATERIALAB CONSULTANTS LIMITED

Room 723 & 725, 7/F, Block B,  
Profit Industrial Building,  
1-15 Kwai Fung Crescent, Kwai Fong,  
Hong Kong.

Tel : (852)-24508238  
Fax : (852)-24508032  
Email : mcl@fugro.com.hk

The logo for MaterialLab, featuring the word "MaterialLab" in a bold, sans-serif font. The "Material" part is in black and the "Lab" part is in white, set against a black rectangular background.

Report No.: 0165/15/ED/0213

### 5. COMMENTS, RECOMMENDATIONS AND CONCLUSIONS

#### 5.1 Comments

5.1.1 According to the environmental site inspections undertaken during the reporting period, the following recommendations were provided:

- CHEC was reminded to display EP on notice board in Portion A1.
- CHEC was reminded to provide drip tray for chemical containers at Portion A1.
- CHEC was reminded to label all chemical containers at Portion A1 and to provide drip tray for generator on site at Portion A1.
- CHEC was reminded to maintain house keeping practice at Portion A1.
- CHEC was reminded to water the site at least 8 times per day at Portion A1.
- CHEC was reminded that the load of dusty materials on a vehicle leaving a construction site should be covered entirely by impervious sheeting to ensure that the dusty materials do not leak from the vehicle at CUE – Common Utility Enclosure.
- CHEC was reminded that good housekeeping practice shall be maintained on site.
- CHEC was reminded that stagnant water was found in manhole.
- CHEC was reminded that construction materials and stagnant water were found in the wells of rooftop.
- CHEC was reminded to fully cover the tarpaulin sheets properly for the exposed earth slope at CUE's works area.

5.1.2 A summary of the Implementation Schedule of Environmental Mitigation Measures (EMIS) is presented in **Appendix E**. All necessary mitigation measures at this stage of works were implemented properly.

#### 5.2 Recommendations

5.2.1 With implementation of the recommended environmental mitigation measures, the contract's environmental impacts were considered environmentally acceptable. The weekly environmental site inspections ensured that all the environmental mitigation measures recommended were effectively implemented.

5.2.2 The recommended environmental mitigation measures, as included in the EM&A programme, effectively minimize the potential environmental impacts from the contract. Also, the EM&A programme effectively monitored the environmental impacts from the construction activities and ensure the proper implementation of mitigation measures. No particular recommendation was advised for the improvement of the programme.

#### 5.3 Conclusions

5.3.1 Commencement of the Contract took place on 10 April 2015 and the construction works of the Contract commenced on 29 August 2015. This is the 1<sup>st</sup> Quarterly EM&A Report summarising the findings of EM&A activities conducted under the Contract from 29 August 2015 to 30 November 2015.

5.3.2 Summary of Action and Limit Level exceedance of 1-hr TSP level and 24-hr TSP level at AMS6 shall be referred to the monthly EM&A Reports (for September 2015, October 2015 and November 2015) prepared by Contract No. HY/2011/03.

## **MATERIALAB CONSULTANTS LIMITED**

Room 723 & 725, 7/F, Block B,  
Profit Industrial Building,  
1-15 Kwai Fung Crescent, Kwai Fong,  
Hong Kong.

Tel : (852)-24508238  
Fax : (852)-24508032  
Email : mcl@fugro.com.hk



Report No.: 0165/15/ED/0213

---

### **Figure 1**

#### **Air Quality Monitoring Stations**

## **MATERIALAB CONSULTANTS LIMITED**

Room 723 & 725, 7/F, Block B,  
Profit Industrial Building,  
1-15 Kwai Fung Crescent, Kwai Fong,  
Hong Kong.

Tel : (852)-24508238  
Fax : (852)-24508032  
Email : mcl@fugro.com.hk



Report No.: 0165/15/ED/0213

---

### **Figure 2**

### **Noise Monitoring Stations**

## **MATERIALAB CONSULTANTS LIMITED**

Room 723 & 725, 7/F, Block B,  
Profit Industrial Building,  
1-15 Kwai Fung Crescent, Kwai Fong,  
Hong Kong.

Tel : (852)-24508238  
Fax : (852)-24508032  
Email : mcl@fugro.com.hk



Report No.: 0165/15/ED/0213

---

### **Appendix A**

#### **Location of Works Areas**



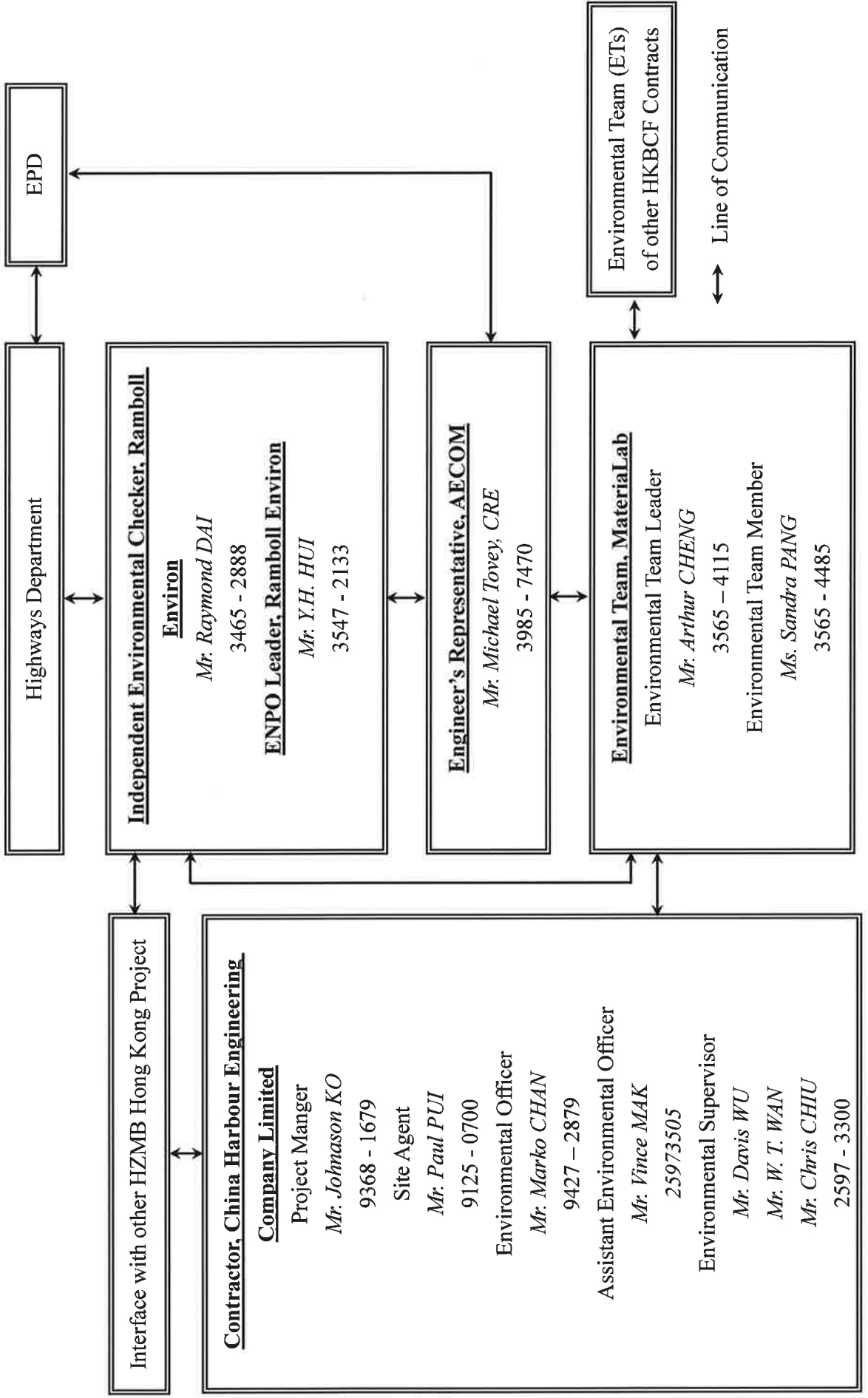




# CHINA HARBOUR ENGINEERING COMPANY LIMITED

Contract No. HY/2013/03 Hong Kong-Zhuhai-Macao Bridge, Hong Kong Boundary Crossing  
Facilities – Vehicle Clearance Plazas and Ancillary Buildings and Facilities

## Projects Organization for Environmental Works





HZMB HK Boundary Crossing Facilities - Vehicle Clearance Plazas and Ancillary Buildings and Facilities							2015			2016		
Activity ID	Activity Name	Original Duration	Remaining Duration	% Complete	Start	Finish	Total Float	Sep	Oct	Nov	Dec	Jan
<b>CONTRACT DATES</b>												
<b>Site Access &amp; Possession</b>												
<i>Possession of Portion of Site</i>												
A0040	Possession of Portion C (<=100 days)	0	0	0%	30-Sep-15*	-73						
A0050	Possession of Portion D (<=220 days)	0	0	0%	15-Nov-15*	0						
A0060	Possession of Portion E (<=160 days)	0	0	100%	15-Sep-15 A							
A0070	Possession of Portion F (<=220 days)	0	0	0%	15-Nov-15*	0						
A0080	Possession of Portion G (<=225 days)	0	0	0%	20-Nov-15*	0						
<b>Section/Stage Subject to Excision</b>												
A0740	Contract Date for Section IIB (100 days, latest date when the Engineer may order)	0	0	0%	30-Sep-15*	-74						
<b>PORTION A1</b>												
<b>Portion A1 Structures</b>												
<b>Bridge A9</b>												
<b>Bored Pile</b>												
S91010	Predrill SI, 10 nos.	61	61	0%	18-Nov-15	01-Feb-16	-82					
<b>047 - Fresh Water Pumping Station, Portion A1 &amp; A2</b>												
A04700	Predrill SI, 4 nos.	12	12	0%	03-Dec-15	17-Dec-15	-63					
<b>049 - Sewage Treatment Plant, Portion A1 &amp; A2</b>												
A04910	Predrill SI, 36 nos.	36	34	5%	22-Sep-15 A	18-Nov-15	-82					
A04920	Predrill SI, 3 nos.	6	6	0%	18-Nov-15	25-Nov-15	-82					
A04930	Approval of Rockhead & Foundation	14	14	0%	25-Nov-15	11-Dec-15	-82					
A04940	Bored Piling (39 Nr.)	127	127	0%	11-Dec-15	21-May-16	-82					
<b>Portion A1 Buildings</b>												
<b>012 - DOH Disinsection Area and Store Room 1, at Portion A1</b>												
A01210	Excavation & Blinding	10	10	0%	31-Oct-15	11-Nov-15	-51					
A01220	Raft Foundation	20	20	0%	12-Nov-15	04-Dec-15	-51					
A01240	Superstructure	35	35	0%	05-Dec-15	18-Jan-16	-51					
<b>036 - Weigh Station</b>												
A03610	Excavation	10	0	100%	16-Sep-15 A	21-Sep-15 A						
A03620	Raft Foundation	50	45	10%	22-Sep-15 A	28-Jun-16	-82					
<b>037 C&amp;ED Tower Cum Inbound Cargo Examination Building (Portion A1 &amp; B)</b>												
A03710	Excavation	14	14	0%	30-Sep-15	16-Oct-15	-84					
A03720	Substructure	50	50	0%	17-Oct-15	15-Dec-15	-84					
A03730	Super Structure	110	110	0%	16-Dec-15	04-May-16	-84					
<b>041 Fire Station Cum Ambulance Depot</b>												
A04100	Excavation + Blinding	14	14	0%	30-Sep-15	16-Oct-15	3					
<b>042 Drill Tower</b>												
A04200	Drill Tower (042) S1 Drilling, 6 Nr.	19	0	100%	01-Sep-15 A	14-Sep-15 A						
A04210	Driven Piles 16 Nr.	15	15	0%	17-Dec-15	07-Jan-16	-63					
<b>052 - Transforms (Zone 4)</b>												

Actual Work	Remaining Work	Critical	Milestone
█	█	█	◆

Date	Revision	Checked	Approved
31-Jul-15	Initial Works Programme Rev. 2. 3MRP	ZJ	
31-Aug-15	Initial Works Programme Rev. 2. 3MRP	ZJ	
30-Sep-15	Initial Works Programme Rev. 3. 3MRP	ZJ	

THREE MONTH ROLLING PROGRAMME (IWP REV.3)	
VEHICLE CLEARANCE PLAZAS AND ANCILLARY BUILDINGS AND FACILITIES	

Page 1 of 5



HZMB HK Boundary Crossing Facilities - Vehicle Clearance Plazas and Ancillary Buildings and Facilities										2015		2016	
Activity ID	Activity Name	Original Duration	Remaining Duration	% Complete	Start	Finish	Total Float	Sep	Oct	Nov	Dec	Jan	
A04010	Excavation + Blinding	10	10	0%	15-Oct-15	27-Oct-15	0						
<b>Glass Wall</b>													
C04010	Shop Drawing Submission and Approval	30	30	0%	30-Sep-15	05-Nov-15	60						
C04020	Fabrication of Glass Wall	60	60	0%	06-Nov-15	18-Jan-16	60						
<b>102 HKPF UVSS Monitor Room</b>													
A10200	Excavation + Blinding	7	7	0%	28-Oct-15	04-Nov-15	100						
<b>Metal Canopy and Roof Installation</b>													
B10210	Shop Drawing Submission and Approval	30	30	0%	22-Dec-15	29-Jan-16	55						
<b>103 Police Inspection Post</b>													
A10310	Excavation + Blinding	5	5	0%	22-Oct-15	27-Oct-15	-54						
<b>HPL Composite Panel Cladding System</b>													
B10310	Shop Drawing Submission and Approval	30	30	0%	30-Sep-15	05-Nov-15	192						
B10320	Fabrication of HPL Cladding	60	60	0%	06-Nov-15	18-Jan-16	192						
<b>057 Transformers (Zone 2)</b>													
A05710	Excavation + Blinding	10	10	0%	30-Sep-15	12-Oct-15	-60						
A05720	Raft Foundation	52	52	0%	13-Oct-15	12-Dec-15	-60						
A05730	Superstructure	65	65	0%	14-Dec-15	04-Mar-16	-60						
<b>107 - C&amp;ED Mobile X-ray Operation Office (Cargo), Portion B</b>													
C10710	Excavation + Blinding	7	7	0%	13-Oct-15	20-Oct-15	-60						
C10720	Raft Foundation	32	32	0%	22-Oct-15	27-Nov-15	-60						
C10730	Superstructure (Roof Slabs)	62	62	0%	28-Nov-15	15-Feb-16	-60						
<b>113 - Field Kiosk for Access Control, Portion B</b>													
B11310	Excavation + Blinding	7	7	0%	09-Nov-15	16-Nov-15	-54						
B11320	Raft Foundation	32	32	0%	17-Nov-15	23-Dec-15	-54						
B11330	Superstructure (Roof Beams & Slabs)	60	60	0%	24-Dec-15	09-Mar-16	-54						
<b>External Works for Portion B</b>													
<b>Drainage Works</b>													
B00030	Initial Survey	12	12	0%	30-Sep-15	14-Oct-15	-60						
SG1540	Drainage Works (7812m & 168MHs)	360	360	0%	15-Oct-15	30-Dec-16	-55						
SG3580	Sewerage (1175m & 32MHs)	360	360	0%	15-Oct-15	30-Dec-16	-55						
<b>Waterpipe Laying</b>													
SW1550	Fresh Water Main Laying (1972m)	360	360	0%	11-Dec-15	01-Mar-17	-55						
SW1580	Flushing Water Main Laying (1851m)	360	360	0%	11-Dec-15	01-Mar-17	-55						
<b>Duct Laying for Utilities/Telecom Cabling, ICSS &amp; Lighting</b>													
SU5300	Duct Laying for Utilities/Telecom Cabling	360	360	0%	11-Dec-15	01-Mar-17	-55						
<b>Sign Gantry ADS 306A &amp; ADS 306B</b>													
SS0070	Sign Gantry ADS 306B SI Drilling, 2 Nr.	6	6	0%	28-Dec-15	05-Jan-16	-55						
SS0110	Sign Gantry ADS306A SI Drilling, 2 Nr.	7	7	0%	17-Dec-15	28-Dec-15	-55						
SS5230	Submission and approval for Sign Gantry	180	180	0%	30-Sep-15	11-May-16	-33						
<b>PORTION C</b>													
<b>Portion C Buildings</b>													
<b>010 - Inbound Coach Kiosk &amp; Staff Subway Entrance</b>													
A01010	Substructure and Staircase Construction	60	60	0%	15-Oct-15	24-Dec-15	-60						
A01020	Kiosk Superstructure	100	100	0%	28-Dec-15	30-Apr-16	-34						
<b>009 - Shuttle Bus Kiosk &amp; Staff Subway Entrance</b>													
A00910	ELS + Blinding (Seg. 1-7) (7 bay)	42	42	0%	15-Oct-15	03-Dec-15	-60						
A00920	Constructing Base Slab of Seg. 1-7	28	28	0%	30-Nov-15	04-Jan-16	-60						
A00930	Constructing Wall + Top Slab of Seg. 1-7	37	37	0%	23-Dec-15	06-Feb-16	-60						

■ Actual Work  
■ Remaining Work  
■ Critical  
◆ Milestone

Date	Revision	Checked	Approved
31-Jul-15	Initial Works Programme Rev. 2. 3MRP	ZJ	
31-Aug-15	Initial Works Programme Rev. 2. 3MRP	ZJ	
30-Sep-15	Initial Works Programme Rev. 3. 3MRP	ZJ	

**HZMB HK Boundary Crossing Facilities - Vehicle Clearance Plazas and Ancillary Buildings and Facilities**

Activity ID	Activity Name	Original Duration	Remaining Duration	% Complete	Start	Finish	Total Float	2015			2016		
								Sep	Oct	Nov	Dec	Jan	
<b>Bridge A3</b>													
S10110	Predrill SI, 10 nos.	30	30	0%	05-Dec-15	12-Jan-16	85						
<b>Bored Pile</b>													
S31610	Predrill SI, 10 Nr.	30	0	100%	10-Aug-15 A	22-Sep-15 A							
S31620	Predrill SI, 1 Nr.	6	0	100%	15-Sep-15 A	22-Sep-15 A							
<b>Bridge A5</b>													
<b>Bored Pile</b>													
S52610	Predrill SI, 15 nos.	18	17	8%	22-Sep-15 A	24-Dec-15	1						
S52620	Predrill SI for others 4 nos.	6	6	0%	24-Dec-15	04-Jan-16	12						
S52630	Bore piling for 19 Nr.	60	60	0%	24-Dec-15	10-Mar-16	1						
<b>Bridge A8</b>													
<b>Bored Pile</b>													
S86120	Predrill SI for P802, 2 nos.	13	13	0%	05-Dec-15	19-Dec-15	66						
<b>Retaining Walls W1-1, W3-1, W5-1 &amp; W7-1</b>													
<b>Retaining Wall W8-1</b>													
S37110	Predrill SI for W3-1, 12 Nr.	36	27	25%	12-Sep-15 A	14-Mar-16	12						
<b>Portion G Buildings</b>													
<b>033 Inbound Private Car Exam Building</b>													
A03300	Excavation + Blinding	10	10	0%	03-Dec-15	14-Dec-15	102						
<b>035 - Sewage Pumping Station, Portion G</b>													
A03510	Predrill SI, 4 nos.	13	0	100%	13-Aug-15 A	03-Sep-15 A							
A03520	Predrill SI, 1 no.	6	0	100%	03-Sep-15 A	10-Sep-15 A							
A03525	Approval of Rockhead & Founding	14	14	0%	05-Dec-15	21-Dec-15	19						
<b>051 Transformers (Zone 5)</b>													
A05100	Excavation + Blinding	5	5	0%	21-Nov-15	26-Nov-15	0						
A05110	Substructure	15	15	0%	27-Nov-15	14-Dec-15	0						
A05140	Super Structure	35	35	0%	15-Dec-15	27-Jan-16	0						
<b>100 Inbound Traffic Control Kiosk</b>													
A10000	Excavation + Blinding	5	5	0%	27-Nov-15	02-Dec-15	45						
<b>HPL Composite Panel Cladding System</b>													
B10010	Shop Drawing Submission and Approval	30	30	0%	21-Nov-15	28-Dec-15	69						
B10015	Fabrication of F/C System	60	60	0%	29-Dec-15	11-Mar-16	69						
<b>External Works for Portion G, H1 &amp; H2</b>													
<b>Drainage Works</b>													
B00080	Initial Survey	12	12	0%	21-Nov-15	04-Dec-15	0						
<b>Sign Gantry DS40, DS41 &amp; DS75</b>													
SS0170	Submission and approval for Sign Gantry	90	90	0%	21-Nov-15	11-Mar-16	14						
<b>PORTION J</b>													
<b>Portion J Structure</b>													
<b>030 Outbound Private Car &amp; CV Kiosks</b>													
A03010	Submission & Approval for Steel Works	60	60	0%	16-Dec-15	01-Mar-16	4						

**Legend**

- █ Actual Work
- █ Remaining Work
- █ Critical
- ◆ Milestone

**THREE MONTH ROLLING PROGRAMME (IWP REV.3)**

**VEHICLE CLEARANCE PLAZAS AND ANCILLARY BUILDINGS AND FACILITIES**

Page 5 of 5

Date	Revision	Checked	Approved
31-Jul-15	Initial Works Programme Rev. 2.3MRP	ZJ	
31-Aug-15	Initial Works Programme Rev. 2.3MRP	ZJ	
30-Sep-15	Initial Works Programme Rev. 3.3MRP	ZJ	

**30-Sept-15**

2016

2015

Sep Oct Nov Dec Jan

Activity ID	Activity Name	Original Duration	Remaining Duration	% Complete	Start	Finish	Total Float	2015			2016	
								Oct	Nov	Dec	Jan	Feb
A04950	Sheet Piling as ELS1 for Equalization Tanks	12	12	0%	30-Jan-16	16-Feb-16	-74					
<b>Portion A1 Buildings</b>												
<b>012 - DOH Disinfection Area and Store Room 1, at Portion A1</b>												
A01210	Excavation & Blinding	10	10	0%	30-Nov-15	10-Dec-15	-76					
A01220	Raft Foundation	20	20	0%	11-Dec-15	06-Jan-16	-76					
A01240	Superstructure	35	35	0%	07-Jan-16	19-Feb-16	-76					
<b>036 - Weigh Station</b>												
A03620	Raft Foundation	50	0	100%	22-Sep-15 A	05-Oct-15 A						
A03630	Super Structure	90	36	60%	06-Oct-15 A	27-Jun-16	29					
<b>037 C&amp;ED Tower Cum Inbound Cargo Examination Building (Portion A1 &amp; B)</b>												
A03710	Excavation	14	7	50%	07-Oct-15 A	07-Nov-15	-92					
A03720	Substructure	50	40	20%	13-Oct-15 A	24-Dec-15	-92					
A03730	Super Structure	110	110	0%	28-Dec-15	13-May-16	-92					
<b>041 Fire Station Cum Ambulance Depot</b>												
A04100	Excavation + Blinding	14	14	0%	31-Oct-15	16-Nov-15	-22					
A04110	Substructure	84	84	0%	28-Dec-15	12-Apr-16	-55					
<b>042 Drill Tower</b>												
A04210	Driven Piles 16 Nr.	15	15	0%	08-Dec-15	24-Dec-15	-55					
A04220	Piling Test	10	10	0%	28-Dec-15	08-Jan-16	-14					
A04230	Excavation	14	14	0%	09-Jan-16	25-Jan-16	-14					
A04240	Substructure	35	35	0%	26-Jan-16	09-Mar-16	-14					
<b>052 - Transforms (Zone 4)</b>												
A05220	Superstructure	64	29	54%	21-Sep-15 A	04-Dec-15	-45					
A05230	Filling out works in Tx Room to CLP (KD4)	55	55	0%	04-Dec-15	13-Feb-16	-45					
A05240	BS Installation (KD9)	66	66	0%	04-Dec-15	26-Feb-16	23					
A05250	Finishing (KD10)	87	87	0%	04-Dec-15	22-Mar-16	2					
<b>105 IMMD Guard Booth, Portion A1</b>												
B10510	Excavation + Blinding	5	5	0%	11-Dec-15	16-Dec-15	-25					
<b>Facade Envelop Structure Installation</b>												
B10580	Shop Drawing Submission and Approval	30	30	0%	04-Jan-16	06-Feb-16	17					
<b>External Works for Portion A1</b>												
<b>Drainage Works</b>												
B00010	Initial Survey	6	6	0%	17-Aug-15 A	06-Nov-15	-109					
SG0030	Sewerage (1063m & 30MHs)	300	300	0%	19-Dec-15	23-Dec-16	-45					
<b>PORTION A2</b>												
<b>Portion A2 Structures</b>												
<b>048 - Reclaimed Water Pumping Station, Portion A2</b>												
A04810	Predrill SI, 4 nos.	13	13	0%	09-Nov-15	23-Nov-15	-74					
A04820	Piling 4nr.	52	52	0%	08-Dec-15	12-Feb-16	-74					
<b>External Works for Portion A2</b>												
<b>Drainage Works</b>												
B00020	Initial Survey	6	6	0%	31-Oct-15	06-Nov-15	-106					
<b>PORTION B</b>												
<b>Portion B Structures</b>												

Date	Revision	Checked	Approved
31-Aug-15	Initial Works Programme Rev 2, 3MRP	ZJ	
30-Sep-15	Initial Works Programme Rev 3, 3MRP	ZJ	
31-Oct-15	Initial Works Programme Rev 3, 3MRP	ZJ	

**THREE MONTH ROLLING PROGRAMME (IWP REV.3)**  
**VEHICLE CLEARANCE PLAZAS AND ANCILLARY BUILDINGS AND FACILITIES**

Page 2 of 6

■ Actual Work  
■ Remaining Work  
■ Critical  
◆ Milestone



**HZMB HK Boundary Crossing Facilities - Vehicle Clearance Plazas and Ancillary Buildings and Facilities**

Activity ID	Activity Name	Original Duration	Remaining Duration	% Complete	Start	Finish	Total Float	2015			2016	
								Oct	Nov	Dec	Jan	Feb
B11330	Superstructure (Roof Beams & Slabs)	60	60	0%	26-Jan-16	12-Apr-16	-79					
<b>External Works for Portion B</b>												
<b>Drainage Works</b>												
B00030	Initial Survey	12	12	0%	31-Oct-15	13-Nov-15	-85					
SG1540	Drainage Works (7812m & 168MHs)	360	360	0%	14-Nov-15	02-Feb-17	-80					
SG3580	Sewerage (1175m & 32MHs)	360	360	0%	14-Nov-15	02-Feb-17	-80					
<b>Waterpipe Laying</b>												
SW1550	Fresh Water Main Laying (1972m)	360	360	0%	13-Jan-16	30-Mar-17	-80					
SW1560	Flushing Water Main Laying (1651m)	360	360	0%	13-Jan-16	30-Mar-17	-80					
<b>Duct Laying for Utilities/Telecom Cabling, TCSS &amp; Lighting</b>												
SU5300	Duct Laying for Utilities/Telecom Cabling	360	360	0%	13-Jan-16	30-Mar-17	-80					
<b>Sign Gantry ADS 306A &amp; ADS 306B</b>												
SS0070	Sign Gantry ADS 306B SI Drilling, 2 Nr.	6	6	0%	16-Dec-15	22-Dec-15	-46					
SS0110	Sign Gantry ADS306A SI Drilling, 2 Nr.	7	7	0%	08-Dec-15	15-Dec-15	-46					
SS5230	Submission and approval for Sign Gantry	180	180	0%	31-Oct-15	11-Jun-16	-58					
<b>PORTION C</b>												
<b>Portion C Buildings</b>												
<b>010 - Inbound Coach Kiosk &amp; Staff Subway Entrance</b>												
A01010	Substructure and Staircase Construction	60	60	0%	14-Nov-15	26-Jan-16	-85					
A01020	Kiosk Superstructure	100	100	0%	27-Jan-16	01-Jun-16	-59					
<b>009 - Shuttle Bus Kiosk &amp; Staff Subway Entrance</b>												
A00910	ELS + Blinding (Seg. 1-7) (7 bay)	42	42	0%	14-Nov-15	05-Jan-16	-82					
A00920	Constructing Base Slab of Seg. 1-7	28	28	0%	31-Dec-15	02-Feb-16	-82					
A00930	Constructing Wall + Top Slab of Seg. 1-7	37	37	0%	25-Jan-16	10-Mar-16	-82					
<b>012 - DOH Disinsection Area and Store Room 1, at Portion C</b>												
B01210	Excavation & Blinding	10	10	0%	12-Nov-15	23-Nov-15	-76					
<b>104 - DOH Secondary Screening Station, at Portion C</b>												
A10420	Excavation & Blinding	5	5	0%	24-Nov-15	28-Nov-15	-76					
<b>108 C&amp;ED Mobile X-ray Machine Operation Office, Portion C</b>												
A10805	Excavation & Blinding	5	5	0%	06-Nov-15	11-Nov-15	-76					
<b>HPL Composite Panel Cladding System</b>												
A10800	Shop Drawing Submission and Approval	30	30	0%	10-Dec-15	16-Jan-16	-47					
A10815	Fabrication of HPL Cladding	60	60	0%	18-Jan-16	02-Apr-16	-47					
<b>110 IMMD Guard Booth (Type 2)</b>												
A11020	Excavation & Blinding	5	5	0%	30-Nov-15	04-Dec-15	160					
<b>111 Field Kiosk for Carpark Operator</b>												
A11120	Excavation & Blinding	5	5	0%	16-Dec-15	21-Dec-15	92					
<b>113 - Field Kiosk for Access Control, Portion C</b>												
C11310	Excavation & Blinding	5	5	0%	31-Oct-15	05-Nov-15	-85					
C11320	Raft Foundation	30	30	0%	05-Nov-15	10-Dec-15	-85					
C11330	Superstructure (Roof Beams & Slabs)	60	60	0%	11-Dec-15	25-Feb-16	-85					
<b>External Works for Portion C</b>												
<b>Drainage Works</b>												
B00040	Initial Survey	12	12	0%	31-Oct-15	13-Nov-15	-82					
SG2400	Drainage Works (1695m & 32MHs)	150	150	0%	27-Jan-16	01-Aug-16	-85					
SG3610	Sewerage (186m & 4MHs)	150	150	0%	27-Jan-16	01-Aug-16	-64					
<b>PORTION D</b>												
<b>Portion D Building</b>												
<b>113 - Field Kiosk for Access Control, Portion D</b>												

**THREE MONTH ROLLING PROGRAMME (IWP REV.3)**  
**VEHICLE CLEARANCE PLAZAS AND ANCILLARY BUILDINGS AND FACILITIES**

Date	Revision	Checked	Approved
31-Aug-15	Initial Works Programme Rev. 2, 3MRP	ZJ	ZJ
30-Sep-15	Initial Works Programme Rev. 3, 3MRP	ZJ	ZJ
31-Oct-15	Initial Works Programme Rev. 3, 3MRP	ZJ	ZJ

Page 4 of 6

■ Actual Work  
■ Remaining Work  
■ Critical  
◆ Milestone

HZMB HK Boundary Crossing Facilities - Vehicle Clearance Plazas and Ancillary Buildings and Facilities										31-Oct-15		
Activity ID	Activity Name	Original Duration	Remaining Duration	% Complete	Start	Finish	Total Float	Oct	2015	2016	Jan	Feb
<b>Bored Pile</b>												
S74150	Predrill SI for P701, P702, P705, 10 Nr.	30	30	0%	12-Dec-15	19-Jan-16	29					
<b>Bridge A8</b>												
<b>Bored Pile</b>												
S86110	Predrill SI for P803, P804 4 nos.	25	6	75%	30-Jul-15 A	29-Jan-16	35					
S86120	Predrill SI for P802, 2 nos.	13	13	0%	05-Dec-15	19-Dec-15	66					
<b>Portion G Buildings</b>												
<b>033 Inbound Private Car Exam Building</b>												
A03300	Excavation + Blinding	10	10	0%	03-Dec-15	14-Dec-15	102					
<b>Glass Canopy Installation</b>												
B03300	Shop Drawing Submission and Approval	30	30	0%	11-Jan-16	17-Feb-16	119					
<b>Aluminium Metal Canopy</b>												
B03310	Shop Drawing Submission and Approval	30	30	0%	11-Jan-16	17-Feb-16	155					
<b>035 - Sewage Pumping Station, Portion G</b>												
A03525	Approval of Rockhead & Founding	14	14	0%	05-Dec-15	21-Dec-15	19					
<b>051 Transformers (Zone 5)</b>												
A05100	Excavation + Blinding	5	5	0%	21-Nov-15	28-Nov-15	0					
A05110	Substructure	15	15	0%	27-Nov-15	14-Dec-15	0					
A05140	Super Structure	35	35	0%	15-Dec-15	27-Jan-16	0					
A05150	Finishing	60	60	0%	28-Jan-16	14-Apr-16	121					
A05160	BS + E&M for Tx Room to CLP (Stage 3A)	59	59	0%	28-Jan-16	13-Apr-16	0					
<b>100 Inbound Traffic Control Kiosk</b>												
A10000	Excavation + Blinding	5	5	0%	27-Nov-15	02-Dec-15	45					
A10010	Raft Foundation	15	15	0%	28-Jan-16	17-Feb-16	0					
<b>HPL Composite Panel Cladding System</b>												
B10010	Shop Drawing Submission and Approval	30	30	0%	21-Nov-15	28-Dec-15	69					
B10015	Fabrication of FC System	60	60	0%	29-Dec-15	11-Mar-16	69					
<b>External Works for Portion G, H1 &amp; H2</b>												
<b>Drainage Works</b>												
B00080	Initial Survey	12	12	0%	21-Nov-15	04-Dec-15	0					
<b>Sign Gantry DS40, DS41 &amp; DS75</b>												
SS0010	Sign Gantry DS40 SI Drilling, 3 Nr.	13	13	0%	16-Jan-16	30-Jan-16	64					
SS0030	Sign Gantry DS41 SI Drilling, 1 Nr.	13	13	0%	16-Jan-16	30-Jan-16	64					
SS0050	Sign Gantry DS75 SI Drilling, 2 Nr.	7	7	0%	08-Jan-16	15-Jan-16	64					
SS0170	Submission and approval for Sign Gantry	90	90	0%	21-Nov-15	11-Mar-16	14					
<b>PORTION J</b>												
<b>Portion J Structure</b>												
<b>030 Outbound Private Car &amp; GV Kiosks</b>												
A03010	Submission & Approval for Steel Works	60	60	0%	16-Dec-15	01-Mar-16	4					
<b>030 Outbound Kiosks, Section IX, Subject to Excision</b>												
C03010	Submission & Approval for Steel Works	100	100	0%	04-Jan-16	07-May-16	0					
<b>External Works for Portion J</b>												
<b>Sign Gantry DS104</b>												
SS0130	Sign Gantry DS104 SI Drilling, 2 Nr.	12	12	0%	15-Jan-16	28-Jan-16	186					

Date	Revision	Checked	Approved
31-Aug-15	Initial Works Programme Rev. 2, 3MRP	ZJ	
30-Sep-15	Initial Works Programme Rev. 3, 3MRP	ZJ	
31-Oct-15	Initial Works Programme Rev. 3, 3MRP	ZJ	

THREE MONTH ROLLING PROGRAMME (IWP REV.3)  
VEHICLE CLEARANCE PLAZAS AND ANCILLARY BUILDINGS AND FACILITIES

- █ Actual Work
- █ Remaining Work
- █ Critical
- ◆ Milestone



Activity ID	Activity Name	Original Duration	Remaining Duration	% Complete Start	Finish	Total Float	2015			2016		
							Nov	Dec	Jan	Feb	Mar	
A04910	Predrill SI, 36 nos.	36	0	100%	22-Sep-15 A	13-Nov-15 A						
A04920	Predrill SI, 3 nos.	6	0	100%	06-Nov-15 A	12-Nov-15 A						
A04930	Approval of Rockhead & Foundation	14	14	0%	07-Dec-15	22-Dec-15						
A04940	Bored Piling (39 Nr)	127	127	0%	23-Dec-15	01-Jun-16						
A04950	Sheet Piling as ELS1 for Equalization Tanks	12	12	0%	24-Feb-16	08-Mar-16						
<b>Portion A1 Buildings</b>												
<b>012 - DOH Disinsection Area and Store Room 1, at Portion A1</b>												
A01210	Excavation & Blinding	10	10	0%	31-Dec-15	12-Jan-16						
A01220	Raft Foundation	20	20	0%	13-Jan-16	04-Feb-16						
A01240	Superstructure	35	35	0%	05-Feb-16	19-Mar-16						
<b>036 - Weigh Station</b>												
A03630	Super Structure	90	0	100%	06-Oct-15 A	19-Nov-15 A						
<b>037 C&amp;ED Tower Cum Inbound Cargo Examination Building (Portion A1 &amp; B)</b>												
A03710	Excavation	14	7	50%	07-Oct-15 A	07-Dec-15						
A03720	Substructure	50	25	50%	13-Oct-15 A	08-Jan-16						
A03730	Super Structure	110	110	0%	09-Jan-16	26-May-16						
<b>041 Fire Station Cum Ambulance Depot</b>												
A04100	Excavation + Blinding	14	14	0%	30-Nov-15	15-Dec-15						
A04110	Substructure	84	84	0%	24-Dec-15	11-Apr-16						
<b>042 Drill Tower</b>												
A04210	Driven Piles 16 Nr.	15	15	0%	07-Dec-15	23-Dec-15						
A04220	Piling Test	10	10	0%	24-Dec-15	07-Jan-16						
A04230	Excavation	14	14	0%	08-Jan-16	23-Jan-16						
A04240	Substructure	35	35	0%	25-Jan-16	08-Mar-16						
<b>052 - Transforms (Zone 4)</b>												
A05220	Superstructure	64	0	100%	21-Sep-15 A	30-Nov-15 A						
A05230	Fitting out works in Tx Room to CLP (KD4)	55	55	0%	30-Nov-15	04-Feb-16						
A05235	Energisisation by CLP	50	50	0%	05-Feb-16	11-Apr-16						
A05240	BS Installation (KD9)	66	66	0%	30-Nov-15	20-Feb-16						
A05250	Finishing (KD10)	87	87	0%	30-Nov-15	16-Mar-16						
<b>105 IMMDD Guard Booth, Portion A1</b>												
B10510	Excavation + Blinding	5	5	0%	13-Jan-16	18-Jan-16						
<b>Facade Envelop Structure Installation</b>												
B10580	Shop Drawing Submission and Approval	30	30	0%	04-Jan-16	05-Feb-16						
B10590	Fabrication of FIC System	60	60	0%	11-Feb-16	25-Apr-16						
<b>External Works for Portion A1</b>												
<b>Drainage Works</b>												
B00010	Initial Survey	6	6	0%	17-Aug-15 A	05-Dec-15						
SG0030	Sewerage (1063m & 30MHs)	300	300	0%	15-Dec-15	17-Dec-16						
<b>PORTION A2</b>												
<b>Portion A2 Structures</b>												
<b>048 - Reclaimed Water Pumping Station, Portion A2</b>												

Actual Work	Blue
Remaining Work	Green
Critical	Red
Milestone	Black Diamond

<b>THREE MONTH ROLLING PROGRAMME (IWP REV.3)</b>			
<b>VEHICLE CLEARANCE PLAZAS AND ANCILLARY BUILDINGS AND FACILITIES</b>			
Date	Revision	Checked	Approved
30-Sep-15	Initial Works Programme Rev.3. 3MRP	ZJ	ZJ
31-Oct-15	Initial Works Programme Rev.3. 3MRP	ZJ	ZJ
30-Nov-15	Initial Works Programme Rev.3. 3MRP	ZJ	ZJ

**HZMB HK Boundary Crossing Facilities - Vehicle Clearance Plazas and Ancillary Buildings and Facilities**

Activity ID	Activity Name	Original Duration	Remaining Duration	% Complete	Start	Finish	Total Float	2015			2016		
								Nov	Dec	Jan	Feb	Mar	
B10320	Fabrication of HPL Cladding	60	60	0%	07-Jan-16	19-Mar-16	142						
<b>057 Transformers (Zone 2)</b>													
A05710	Excavation + Blinding	10	10	0%	30-Nov-15	10-Dec-15	-110						
A05720	Raft Foundation	52	52	0%	11-Dec-15	16-Feb-16	-110						
A05730	Superstructure	65	65	0%	17-Feb-16	07-May-16	-110						
<b>107 - C&amp;ED Mobile X-ray Operation Office (Cargo), Portion B</b>													
C10710	Excavation + Blinding	7	7	0%	11-Dec-15	18-Dec-15	-110						
C10720	Raft Foundation	32	32	0%	19-Dec-15	28-Jan-16	-110						
C10730	Superstructure (Roof Slabs)	62	62	0%	29-Jan-16	18-Apr-16	-110						
<b>113 - Field Kiosk for Access Control, Portion B</b>													
B11310	Excavation + Blinding	7	7	0%	09-Jan-16	16-Jan-16	-104						
B11320	Raft Foundation	32	32	0%	18-Jan-16	26-Feb-16	-104						
B11330	Superstructure (Roof Beams & Slabs)	60	60	0%	27-Feb-16	12-May-16	-104						
<b>External Works for Portion B</b>													
<b>Drainage Works</b>													
B00030	Initial Survey	12	12	0%	30-Nov-15	12-Dec-15	-110						
SG1540	Drainage Works (7812m & 168MHs)	360	360	0%	14-Dec-15	03-Mar-17	-105						
SG3580	Sewerage (1175m & 32MHs)	360	360	0%	14-Dec-15	03-Mar-17	-105						
<b>Waterpipe Laying</b>													
SW1550	Fresh Water Main Laying (1972m)	360	360	0%	15-Feb-16	05-May-17	-105						
SW1560	Flushing Water Main Laying (1851m)	360	360	0%	15-Feb-16	05-May-17	-105						
SU5300	Duct Laying for Utilities/Telecom Cabling	360	360	0%	15-Feb-16	05-May-17	-105						
<b>Sign Gantry ADS 306A &amp; ADS 306B</b>													
SS0070	Sign Gantry ADS 306B SI Drilling, 2 Nr.	6	6	0%	15-Dec-15	21-Dec-15	-36						
SS0110	Sign Gantry ADS306A SI Drilling, 2 Nr.	7	7	0%	07-Dec-15	14-Dec-15	-36						
SS3230	Submission and approval for Sign Gantry	180	180	0%	30-Nov-15	12-Jul-16	-83						
<b>PORTION C</b>													
<b>Portion C Buildings</b>													
<b>010 - Inbound Coach Kiosk &amp; Staff Subway Entrance</b>													
A01010	Substructure and Staircase Construction	60	60	0%	14-Dec-15	27-Feb-16	-110						
<b>009 - Shuttle Bus Kiosk &amp; Staff Subway Entrance</b>													
A00910	ELS + Blinding (Seg. 1-7) (7 bay)	42	42	0%	14-Dec-15	03-Feb-16	-88						
A00920	Constructing Base Slab of Seg. 1-7	28	28	0%	30-Jan-16	05-Mar-16	-98						
A00930	Constructing Wall + Top Slab of Seg. 1-7	37	37	0%	26-Feb-16	13-Apr-16	-98						
<b>012 - DOH Disinsection Area and Store Room 1, at Portion C</b>													
B01210	Excavation & Blinding	10	10	0%	11-Dec-15	22-Dec-15	-101						
<b>104 - DOH Secondary Screening Station, at Portion C</b>													
A10420	Excavation & Blinding	5	5	0%	23-Dec-15	30-Dec-15	-101						
<b>108 C&amp;ED Mobile X-ray Machine Operation Office, Portion C</b>													
A10805	Excavation & Blinding	5	5	0%	05-Dec-15	10-Dec-15	-101						
<b>HPL Composite Panel Cladding System</b>													
A10800	Shop Drawing Submission and Approval	30	30	0%	09-Jan-16	16-Feb-16	-70						
A10815	Fabrication of HPL Cladding	60	60	0%	17-Feb-16	30-Apr-16	-70						
<b>110 IMMD Guard Booth (Type 2)</b>													
A11020	Excavation & Blinding	5	5	0%	31-Dec-15	06-Jan-16	135						
<b>111 Field Kiosk for Carpark Operator</b>													
A11120	Excavation & Blinding	5	5	0%	18-Jan-16	22-Jan-16	67						
<b>113 - Field Kiosk for Access Control, Portion C</b>													

Date	Revision	Checked	Approved
30-Sep-15	Initial Works Programme Rev. 3. 3MRP	ZJ	
31-Oct-15	Initial Works Programme Rev. 3. 3MRP	ZJ	
30-Nov-15	Initial Works Programme Rev. 3. 3MRP	ZJ	

**THREE MONTH ROLLING PROGRAMME (IWP REV.3)**  
**VEHICLE CLEARANCE PLAZAS AND ANCILLARY BUILDINGS AND FACILITIES**

Page 4 of 7

- █ Actual Work
- █ Remaining Work
- █ Critical
- ◆ Milestone



**HZMB HK Boundary Crossing Facilities - Vehicle Clearance Plazas and Ancillary Buildings and Facilities**

30-Nov-15

Activity ID	Activity Name	Original Duration	Remaining Duration	% Complete	Start	Finish	2015			2016		
							Nov	Dec	Jan	Feb	Mar	
<b>Bridge A4</b>												
<b>Bored Pile</b>												
S42320	Bore pile 4 Nr.	33	33	0%	22-Dec-15	01-Feb-16						
S42340	Pile Testing	7	7	0%	16-Feb-16	23-Feb-16						
<b>Pile Cap</b>												
S42360	Cap - Pier P401	30	30	0%	24-Feb-16	01-Apr-16						
S42370	Cap - Pier P402	30	30	0%	24-Feb-16	01-Apr-16						
<b>Bridge A5</b>												
<b>Bored Pile</b>												
S52610	Predrill SI, 15 nos.	18	0	100%	22-Sep-15A	31-Oct-15 A						
S52620	Predrill SI for others 4 nos.	6	6	0%	14-Dec-15	19-Dec-15						
S52630	Bore piling for 19 Nr.	60	60	0%	14-Dec-15	27-Feb-16						
S52640	Pile Testing for P504, P505	7	7	0%	25-Jan-16	01-Feb-16						
<b>Pile Cap</b>												
S52710	Cap for P504, P505	30	30	0%	02-Feb-16	10-Mar-16						
<b>Bridge A6</b>												
<b>Bored Pile</b>												
S63510	Bore pile for P606, A607/A711, 6 Nr.	46	46	0%	22-Dec-15	19-Feb-16						
<b>Bridge A7a, A7b, A7c</b>												
<b>Bored Pile</b>												
S74150	Predrill SI for P701, P702 - P705, 10 Nr.	30	30	0%	21-Dec-15	27-Jan-16						
S74170	Bore Piling for A701, P702 - P705, 10 Nr.	42	42	0%	20-Nov-15A	21-Apr-16						
<b>Bridge A8</b>												
<b>Bored Pile</b>												
S86110	Predrill SI for P803, P804 4 nos.	25	0	100%	30-Jul-15A	23-Nov-15A						
S86120	Predrill SI for P802 2 nos.	13	0	100%	17-Nov-15 A	23-Nov-15A						
<b>Retaining Walls W1-1, W3-1, W5-1 &amp; W7-1</b>												
<b>Retaining Wall W3-1</b>												
S37110	Predrill SI for W3-1, 12 Nr.	36	0	100%	12-Sep-15A	27-Nov-15A						
S37120	Predrill SI for W3-1, other 4 Nr.	12	0	100%	02-Nov-15A	27-Nov-15 A						
<b>Portion G Buildings</b>												
<b>033 Inbound Private Car Exam Building</b>												
A03300	Excavation + Blinding	10	10	0%	11-Dec-15	22-Dec-15						
<b>Glass Canopy Installation</b>												
B03300	Shop Drawing Submission and Approval	30	30	0%	19-Jan-16	25-Feb-16						
B03305	Fabrication of Glass Canopy	60	60	0%	26-Feb-16	11-May-16						
<b>Aluminium Metal Canopy</b>												
B03310	Shop Drawing Submission and Approval	30	30	0%	19-Jan-16	25-Feb-16						
B03315	Fabrication of FIC System	60	60	0%	26-Feb-16	11-May-16						
<b>035 - Sewage Pumping Station, Portion G</b>												
A03525	Approval of Rockhead & Founding	14	14	0%	14-Dec-15	31-Dec-15						
<b>051 Transformers (Zone 5)</b>												
A05100	Excavation + Blinding	5	5	0%	30-Nov-15	04-Dec-15						
A05110	Substructure	15	15	0%	05-Dec-15	22-Dec-15						
A05140	Super Structure	35	35	0%	23-Dec-15	04-Feb-16						

Date	Revision	Checked	Approved
Initial Works Programme Rev. 3. 3MRP	ZJ		
Initial Works Programme Rev. 3. 3MRP	ZJ		
Initial Works Programme Rev. 3. 3MRP	ZJ		

**THREE MONTH ROLLING PROGRAMME (IWP REV.3)  
VEHICLE CLEARANCE PLAZAS AND ANCILLARY BUILDINGS AND FACILITIES**

- █ Actual Work
- █ Remaining Work
- █ Critical
- ◆ Milestone



## **MATERIALAB CONSULTANTS LIMITED**

Room 723 & 725, 7/F, Block B,  
Profit Industrial Building,  
1-15 Kwai Fung Crescent, Kwai Fong,  
Hong Kong.

Tel : (852)-24508238  
Fax : (852)-24508032  
Email : mcl@fugro.com.hk



Report No.: 0165/15/ED/0213

---

### **Appendix D**

#### **Event / Action Plan**

Event	Action			
	ET	IEC	ER	Contractor
2. Exceedance for two or more consecutive samples	<ol style="list-style-type: none"> <li>1. Identify source;</li> <li>2. Inform IEC and ER;</li> <li>3. Advise the ER on the effectiveness of the proposed remedial measures;</li> <li>4. Repeat measurements to confirm findings;</li> <li>5. Increase monitoring frequency to daily;</li> <li>6. Discuss with IEC and Contractor on remedial actions required;</li> <li>7. If exceedance continues, arrange meeting with IEC and ER;</li> <li>8. If exceedance stops, cease additional monitoring.</li> </ol>	<ol style="list-style-type: none"> <li>1. Check monitoring data submitted by ET;</li> <li>2. Check Contractor's working method;</li> <li>3. Discuss with ET and Contractor on possible remedial measures;</li> <li>4. Advise the ER on the effectiveness of the proposed remedial measures;</li> <li>5. Supervise Implementation of remedial measures.</li> </ol>	<ol style="list-style-type: none"> <li>1. Confirm receipt of notification of failure in writing;</li> <li>2. Notify Contractor;</li> <li>3. Ensure remedial measures properly implemented.</li> </ol>	<ol style="list-style-type: none"> <li>1. Submit proposals for remedial to ER within 3 working days of notification;</li> <li>2. Implement the agreed proposals;</li> <li>3. Amend proposal if appropriate.</li> </ol>

Event	Action			
	ET	IEC	ER	Contractor
2. Exceedance for two or more consecutive samples	<ol style="list-style-type: none"> <li>1. Notify IEC, ER, Contractor and EPD;</li> <li>2. Identify source;</li> <li>3. Repeat measurement to confirm findings;</li> <li>4. Increase monitoring frequency to daily;</li> <li>5. Carry out analysis of Contractor's working procedures to determine possible mitigation to be implemented;</li> <li>6. Arrange meeting with IEC and ER to discuss the remedial actions to be taken;</li> <li>7. Assess effectiveness of Contractor's remedial actions and keep IEC, EPD and ER informed of the results;</li> <li>8. If exceedance stops, cease additional monitoring.</li> </ol>	<ol style="list-style-type: none"> <li>1. Discuss amongst ER, ET, and Contractor on the potential remedial actions;</li> <li>2. Review Contractor's remedial actions whenever necessary to assure their effectiveness and advise the ER accordingly;</li> <li>3. Supervise the implementation of remedial measures.</li> </ol>	<ol style="list-style-type: none"> <li>1. Confirm receipt of notification of failure in writing;</li> <li>2. Notify Contractor;</li> <li>3. In consultation with the IEC, agree with the Contractor on the remedial measures to be implemented;</li> <li>4. Ensure remedial measures properly implemented;</li> <li>5. If exceedance continues, consider what portion of the work is responsible and instruct the Contractor to stop that portion of work until the exceedance is abated.</li> </ol>	<ol style="list-style-type: none"> <li>1. Take immediate action to avoid further exceedance;</li> <li>2. Submit proposals for remedial actions to IEC within 3 working days of notification;</li> <li>3. Implement the agreed proposals;</li> <li>4. Resubmit proposals if problem still not under control;</li> <li>5. Stop the relevant portion of works as determined by the ER until the exceedances abated.</li> </ol>

Event	Action			
	ET	IEC	ER	Contractor
Limit Level	<ol style="list-style-type: none"> <li>1. Inform IEC, ER, EPD and Contractor;</li> <li>2. Identify source;</li> <li>3. Repeat measurements to confirm findings;</li> <li>4. Increase monitoring frequency;</li> <li>5. Carry out analysis of Contractor's working procedures to determine possible mitigation to be implemented;</li> <li>6. Inform IEC, ER and EPD the causes and actions taken for the exceedances;</li> <li>7. Assess effectiveness of Contractor's remedial actions and keep IEC, EPD and ER informed of the results;</li> <li>8. If exceedance stops, cease additional monitoring.</li> </ol>	<ol style="list-style-type: none"> <li>1. Discuss amongst ER, ET, and Contractor on the potential remedial actions;</li> <li>2. Review Contractors remedial actions whenever necessary to assure their effectiveness and advise the ER accordingly;</li> <li>3. Supervise the implementation of remedial measures.</li> </ol>	<ol style="list-style-type: none"> <li>1. Confirm receipt of notification of failure in writing;</li> <li>2. Notify Contractor;</li> <li>3. Require Contractor to propose remedial measures for the analysed noise problem;</li> <li>4. Ensure remedial measures properly implemented;</li> <li>5. If exceedance continues, consider what portion of the work is responsible and instruct the Contractor to stop that portion of work until the exceedance is abated.</li> </ol>	<ol style="list-style-type: none"> <li>1. Take immediate action to avoid further exceedance;</li> <li>2. Submit proposals for remedial actions to IEC within 3 working days of notification;</li> <li>3. Implement the agreed proposals;</li> <li>4. Resubmit proposals if problem still not under control;</li> <li>5. Stop the relevant portion of works as determined by the ER until the exceedance is abated.</li> </ol>

## Appendix E – Implementation Schedule of Environmental Mitigation Measures (EMIS)

EIA Ref.	EM&A Log Ref.	Recommended Mitigation Measures	Location of the measures	Implementation Status
<b>Air Quality</b>				
S5.5.6.1	A1	1) The contractor shall follow the procedures and requirements given in the Air Pollution Control (Construction Dust) Regulation	All construction sites	V
S5.5.6.2	A2	2) Proper watering of exposed spoil should be undertaken throughout the construction phase: <ul style="list-style-type: none"> <li>• Any excavated or stockpile of dusty material should be covered entirely by impervious sheeting or sprayed with water to maintain the entire surface wet and then removed or backfilled or reinstated where practicable within 24 hours of the excavation or unloading;</li> <li>• Any dusty materials remaining after a stockpile is removed should be wetted with water and cleared from the surface of roads;</li> <li>• A stockpile of dusty material should not be extend beyond the pedestrian barriers, fencing or traffic cones.</li> <li>• The load of dusty materials on a vehicle leaving a construction site should be covered entirely by impervious sheeting to ensure that the dusty materials do not leak from the vehicle;</li> <li>• Where practicable, vehicle washing facilities with high pressure water jet should be provided at every discernible or designated vehicle exit point. The area where vehicle washing takes place and the road section between the washing facilities and the exit point should be paved with concrete, bituminous materials or hardcores;</li> </ul>	All construction sites	V
S5.5.6.2	A2	<ul style="list-style-type: none"> <li>• When there are open excavation and reinstatement works, hoarding of not less than 2.4m high should be provided as far as practicable along the site boundary with provision for public crossing. Good site practice shall also be adopted by the Contractor to ensure the conditions of the hoardings are properly maintained throughout the construction period;</li> <li>• The portion of any road leading only to construction site that is within 30m of a vehicle entrance or exit should be kept clear of dusty materials,</li> <li>• Surfaces where any pneumatic or power-driven drilling, cutting, polishing or other mechanical breaking operation takes place should be sprayed with water or a dust suppression chemical continuously;</li> <li>• Any area that involves demolition activities should be sprayed with water or a dust suppression chemical immediately prior to, during and immediately after the activities so as to maintain the entire surface wet;</li> <li>• Where a scaffolding is erected around the perimeter of a building under construction, effective dust screens, sheeting or netting should be provided to enclose the scaffolding from the ground floor level of the building, or a canopy should be provided from the first floor level up to the highest level of the scaffolding;</li> <li>• Any skip hoist for material transport should be totally enclosed by impervious sheeting;</li> <li>• Every stock of more than 20 bags of cement or dry pulverised fuel ash (PFA) should be covered entirely by impervious sheeting or placed in an area sheltered on the top</li> </ul>	All construction sites	V
S5.5.6.2	A2	<ul style="list-style-type: none"> <li>• Cement or dry PFA delivered in bulk should be stored in a closed silo fitted with an audible high level alarm which is interlocked with the material filling line and no overfilling is allowed;</li> <li>• Loading, unloading, transfer, handling or storage of bulk cement or dry PFA should be carried out in a totally enclosed system or facility, and any vent or exhaust should</li> </ul>	All construction sites	N/A

EIA Ref.	EM&A Log Ref.	Recommended Mitigation Measures	Location of the measures	Implementation Status
		possible and practicable; <ul style="list-style-type: none"> <li>material stockpiles, mobile container site office and other structures should be effectively utilised, where practicable, to screen noise from on-site construction activities.</li> </ul>		
S6.4.11	N2	2) Install temporary hoarding located on the site boundaries between noisy construction activities and NSRs. The conditions of the hoardings shall be properly maintained throughout the construction period.	All construction sites	V
S6.4.12	N3	3) Install movable noise barriers (typically density@14kg/m acoustic mat or full enclosure close to noisy plants including compressor, generators, saw.	For plant items listed in Appendix 6D of the EIA report at all construction sites	N/A
S6.4.13	N4	4) Select "Quiet plants" which comply with the BS 5228 Part 1 or TM standards.	For plant items listed in Appendix 6D of the EIA report at all construction site	V
S6.4.14	N5	5) Sequencing operation of construction plants where practicable	All construction sites where practicable	V
S5.1	N6	6) Implement a noise monitoring under EM&A programme.	Selected representative noise monitoring station	V
<b>Sediment</b>				
S7.3	S1	1) The requirements as recommended in ETWB TC 34/2002 Management of Dredged/Excavated Sediment shall be included in the Particular Specification as appropriate.	All construction sites	N/A
<b>Waste Management (Construction Waste)</b>				
S8.3.8	WM1	<u>Construction and Demolition Material</u> The following mitigation measures should be implemented in handling the waste: <ul style="list-style-type: none"> <li>Maintain temporary stockpiles and reuse excavated fill material for backfilling and reinstatement;</li> <li>Carry out on-site sorting;</li> <li>Make provisions in the Contract documents to allow and promote the use of recycled aggregates where appropriate;</li> <li>Implement a trip-ticket system for each works contract to ensure that the disposal of C&amp;D materials are properly documented and verified; and</li> <li>Implement an enhanced Waste Management Plan similar to E7WBTC (Works) No. 19/2005 - "Environmental Management on Construction Sites" to encourage on-site sorting of C&amp;D materials and to minimize their generation during the course of construction.</li> <li>In addition, disposal of the C&amp;D materials onto any sensitive locations such as agricultural lands, etc. should be avoided. The Contractor shall propose the final disposal sites to the Project Proponent and get its approval before implementation</li> </ul>	All construction sites	V
S8.3.9-	WM2	C&D Waste	All	V

EIA Ref.	EM&A Log Ref.	Recommended Mitigation Measures	Location of the measures	Implementation Status
		<p>paper if volumes are large enough to warrant collection. Participation in a local collection scheme should be considered by the Contractor.</p> <ul style="list-style-type: none"> <li>• Training should be provided to workers about the concepts of site cleanliness and appropriate waste management procedure, including reduction, reuse and recycling of wastes.</li> </ul>		
<b>Water Quality ( Construction Phase)</b>				
S9.11.1.7	W2	<p><b>Land Works</b>            General construction activities on land should also be governed by standard good working practice. Specific measures to be written into the works contracts should include:</p> <ul style="list-style-type: none"> <li>• wastewater from temporary site facilities should be controlled to prevent direct discharge to surface or marine waters;</li> <li>• sewage effluent and discharges from on-site kitchen facilities shall be directed to Government sewer in accordance with the requirements of the WPCO or collected for disposal offsite. The use of soakaways shall be avoided;</li> <li>• storm drainage shall be directed to storm drains via adequately designed sand/silt removal facilities such as sand traps, silt traps and sediment basins. Channels, earth bunds or sand bag barriers should be provided on site to properly direct stormwater to such silt removal facilities. Catchpits and perimeter channels should be constructed in advance of site formation works and earthworks;</li> <li>• silt removal facilities, channels and manholes shall be maintained and any deposited silt and grit shall be removed regularly, including specifically at the onset of and after each rainstorm;</li> <li>• temporary access roads should be surfaced with crushed stone or gravel;</li> <li>• rainwater pumped out from trenches or foundation excavations should be discharged into storm drains via silt removal facilities;</li> <li>• measures should be taken to prevent the washout of construction materials, soil, silt or debris into any drainage system;</li> <li>• open stockpiles of construction materials (e.g. aggregates and sand) on site should be covered with tarpaulin or similar fabric during rainstorms;</li> <li>• manholes (including any newly constructed ones) should always be adequately covered and temporarily sealed so as to prevent silt, construction materials or debris from getting into the drainage system, and to prevent storm run-off from getting into foul sewers;</li> <li>• discharges of surface run-off into foul sewers must always be prevented in order not to unduly overload the foul sewerage system;</li> </ul>	Land-based works area	V
S9.11.1.7	W2	<ul style="list-style-type: none"> <li>• all vehicles and plant should be cleaned before they leave the construction site to ensure that no earth, mud or debris is deposited by them on roads. A wheel washing bay should be provided at every site exit;</li> <li>• wheel wash overflow shall be directed to silt removal facilities before being discharged to the storm drain;</li> <li>• the section of construction road between the wheel washing bay and the public road should be surfaced with crushed stone or coarse gravel;</li> <li>• wastewater generated from concreting, plastering, internal decoration, cleaning work and other similar activities, shall be screened to remove large objects;</li> <li>• vehicle and plant servicing areas, vehicle wash bays and lubrication facilities shall be located under roofed areas. The drainage in these covered areas shall be connected to foul</li> </ul>	Land-based works area	V

EIA Ref.	EM&A Log Ref.	Recommended Mitigation Measures	Location of the measures	Implementation Status
		<p>bridge and traffic.</p> <p>G3. Not applicable as this is for HKLR.</p> <p>G4. For HKBCF, providing aesthetic architectural design on the related buildings (e.g. similar materials for PCB building facade to Airport buildings, roof planting and subtle materials for other facilities buildings and so on), and the related infrastructure (e.g. parapet planting and transparent cover for elevated footbridges) to provide harmonious atmosphere of the HKBCF</p> <p>G5. Vegetation reinstatement and upgrading to disturbed areas</p> <p>G6. Maximizing new tree shrub and other vegetation planting to compensate tree felled and vegetation removed</p> <p>G7. Providing planting area around peripheral of HKBCF for tree planting screening effect;</p> <p>G8. Plant salt-tolerant native and shrubs etc along the planter strip at affected seawall.</p> <p>G9. Reserve of loose natural granite rocks for re-use, Provide new coastline to adopt "natural-look" by means of using armour rocks in the form of natural rock materials and planting strip area accommodating screen buffer to enhance "natural-look" of the new coastline.</p>		
S14.3.3.3	LV3	<p><u>Mitigate Visual Impacts</u></p> <p>V1.Minimize time for construction activities during construction period.</p> <p>V2. Provide screen hoarding at the portion of the project site / works areas / storage areas near VSRs who have close low-level views to the Project during HKBCF construction.</p>	HKBCF	N/A
<b>EM&amp;A</b>				
S15.5.2.2	EM1	An Independent Environmental Checker needs to be employed as per the EM&A Manual	All construction sites	V
S15.5 – S15.6	EM2	<p>1) An Environmental Team needs to be employed as per the EM&amp;A Manual.</p> <p>2) Prepare a systematic Environmental Management Plan to ensure effective implementation of the mitigation measures.</p> <p>3) An environmental impact monitoring needs to be implementing by the Environmental Team to ensure all the requirements given in the EM&amp;A Manual are fully complied with.</p>	All construction sites	V

Legend: V = implemented;

x = not implemented;

N/A = not applicable



## MATERIALAB CONSULTANTS LIMITED

Room 723 & 725, 7/F, Block B,  
Profit Industrial Building,  
1-15 Kwai Fung Crescent, Kwai Fong,  
Hong Kong.

Tel : (852)-24508238  
Fax : (852)-24508032  
Email : mcl@fugro.com.hk

The logo for MaterialLab, featuring the word "MaterialLab" in a bold, black, sans-serif font. The text is centered within a thick, black horizontal bar that extends slightly beyond the text on both sides.

Report No.: 0165/15/ED/0213

### Appendix F – Site Audit Findings and Corrective Actions

Site inspections were carried out on a weekly basis to monitor the implementation of proper environmental pollution control and mitigation measures for the Project. During the reporting period, 13 site inspections were carried out on 2, 11, 17 and 25 September 2015, 2, 8, 15, 23 and 29 October 2015, and 5, 13, 20 and 23 November 2015.

Particular observations during the site inspections are described below.

#### 2 September 2015

1. No particular findings

#### 11 September 2015

1. CHEC was reminded to display EP on notice board in Portion A1. EP was displayed properly on the Environmental bulletin board at Portion A1 on the same day.

#### 17 September 2015

1. CHEC was reminded to provide drip tray for chemical containers at Portion A1. Subsequently, the Contractor provided drip tray for chemical containers at Portion A1. The observation was closed on 2 October 2015.

#### 25 September 2015

1. CHEC was reminded to label all chemical containers at Portion A1 and to provide drip tray for generator on site at Portion A1. Subsequently, the Contractor labelled all chemical containers at Portion A1 and provided drip tray for generator on site at Portion A1. The observation was closed on 2 October 2015.

#### 2 October 2015

1. CHEC was reminded to maintain house keeping practice at Portion A1. Subsequently, the Contractor removed the unwanted construction materials at Portion A1. The observation was closed on 8 October 2015.
2. CHEC was reminded to water the site at least 8 times per day at Portion A1. Subsequently, the Contractor provided recorded records of water spraying for haul road and exposed areas 8 times per day for inspection. Haul road was observed to be wet during follow-up site inspection, and no dusty site activities were observed at Portion A1. The observation was closed on 8 October 2015.

#### 8 October 2015

1. No particular finding.

#### 15 October 2015

1. No particular finding.

#### 23 October 2015

1. No particular finding.

#### 29 October 2015

1. CHEC was reminded that the load of dusty materials on a vehicle leaving a construction site should be covered entirely by impervious sheeting to ensure that the dusty materials do not leak from the vehicle at CUE – Common Utility Enclosure. Subsequently, the load of dusty materials

## **MATERIALAB CONSULTANTS LIMITED**

Room 723 & 725, 7/F, Block B,  
Profit Industrial Building,  
1-15 Kwai Fung Crescent, Kwai Fong,  
Hong Kong.

Tel : (852)-24508238  
Fax : (852)-24508032  
Email : mcl@fugro.com.hk



Report No.: 0165/15/ED/0213

---

### **Appendix G**

#### **Waste Flow Table**

## **MATERIALAB CONSULTANTS LIMITED**

Room 723 & 725, 7/F, Block B,  
Profit Industrial Building,  
1-15 Kwai Fung Crescent, Kwai Fong,  
Hong Kong.

Tel : (852)-24508238  
Fax : (852)-24508032  
Email : mcl@fugro.com.hk

The logo for MaterialLab, featuring the word "MaterialLab" in a bold, sans-serif font. The text is white and is set against a black rectangular background that has a thin white border.

Report No.: 0165/15/ED/0213

---

### **Appendix H**

#### **Environmental Licenses and Permits**

Item	Permit/Licence Registration	Permit No.	Work Area	Application Date	Issue Date	Valid Date		Status	Remark
						From	To		
14	Construction Noise Permit Pursuant to Section 8(6) of the Noise Control Ordinance	GW-RS1203-15	CUE	20-Oct-15	03-Nov-15	02-Nov-15	31-Jan-16	Valid	
15	Construction Noise Permit Pursuant to Section 8(6) of the Noise Control Ordinance	GW-RS1315-15	Portion G	12-Nov-15	26-Nov-15	28-Nov-15	28-Feb-16	Valid	

## MATERIALAB CONSULTANTS LIMITED

Room 723 & 725, 7/F, Block B,

Profit Industrial Building,

1-15 Kwai Fung Crescent, Kwai Fong,

Hong Kong.

Tel : (852)-24508238

Fax : (852)-24508032

Email : mcl@fugro.com.hk

The logo for MaterialLab, featuring the word "MaterialLab" in a bold, black, sans-serif font. The text is centered between two thick, horizontal black bars.

Report No.: 0165/15/ED/0213

### Appendix I –

#### Statistics on Environmental Complaints, Notifications of Summons and Successful Prosecutions

Reporting Period	Cumulative Statistics		
	Complaints	Notifications of Summons	Successful Prosecutions
This reporting period	1	0	0
From commencement date of construction to end of reporting period	1	0	0