

Figure 1. Transect Line Layout in Northwest and Northeast Lantau Survey Areas

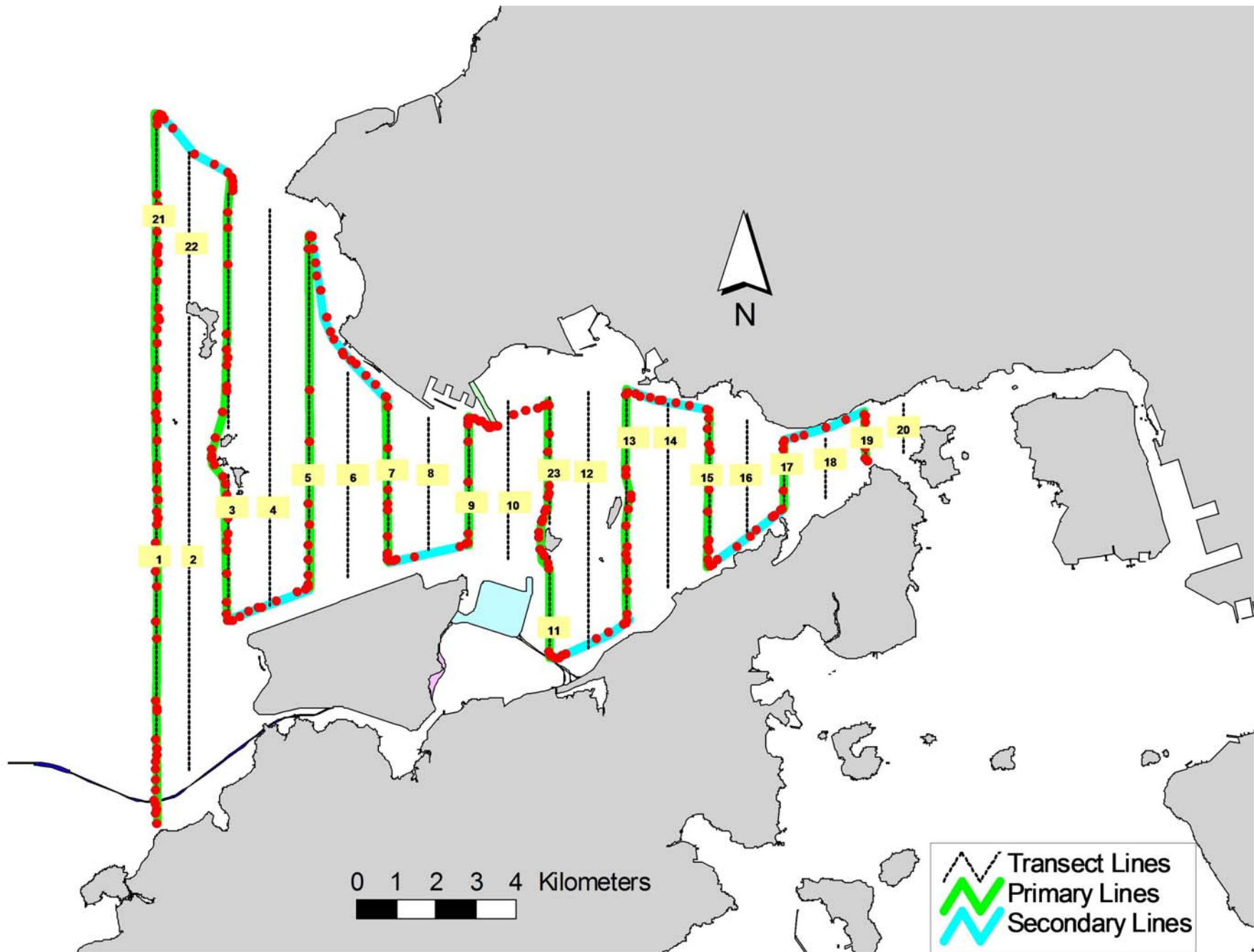


Figure 2. Survey Route on December 2nd, 2015

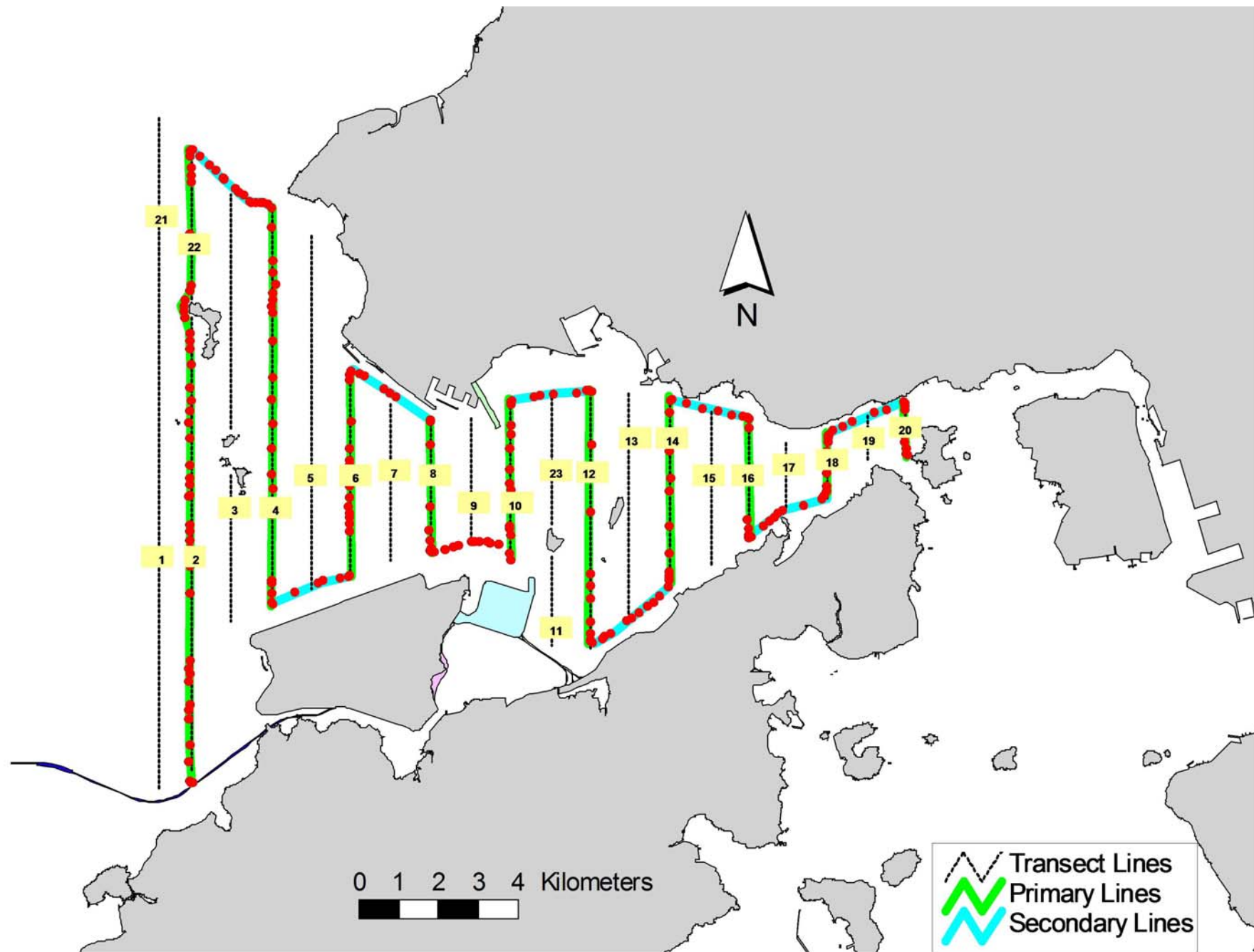


Figure 3. Survey Route on December 7th, 2015

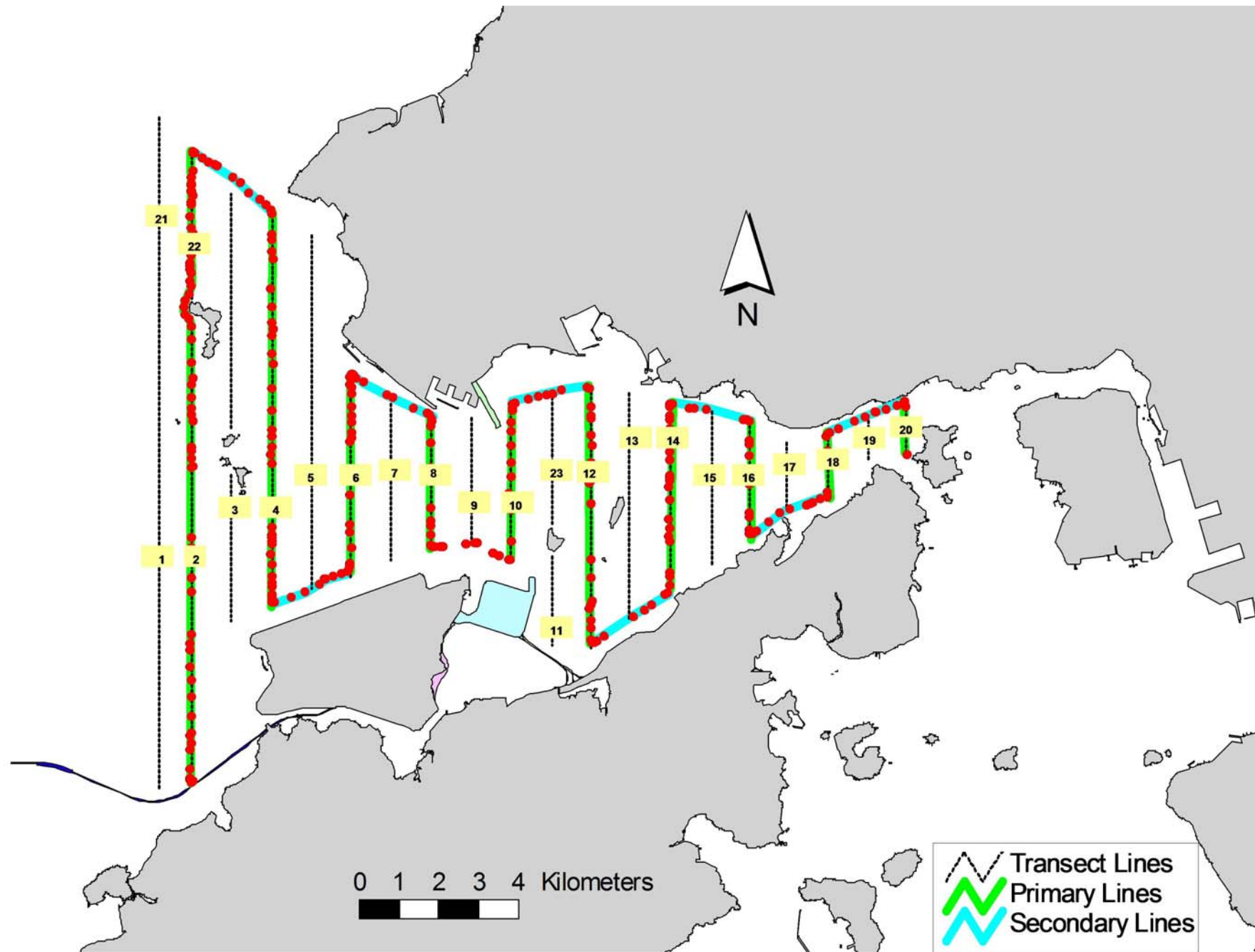


Figure 4. Survey Route on December 9th, 2015

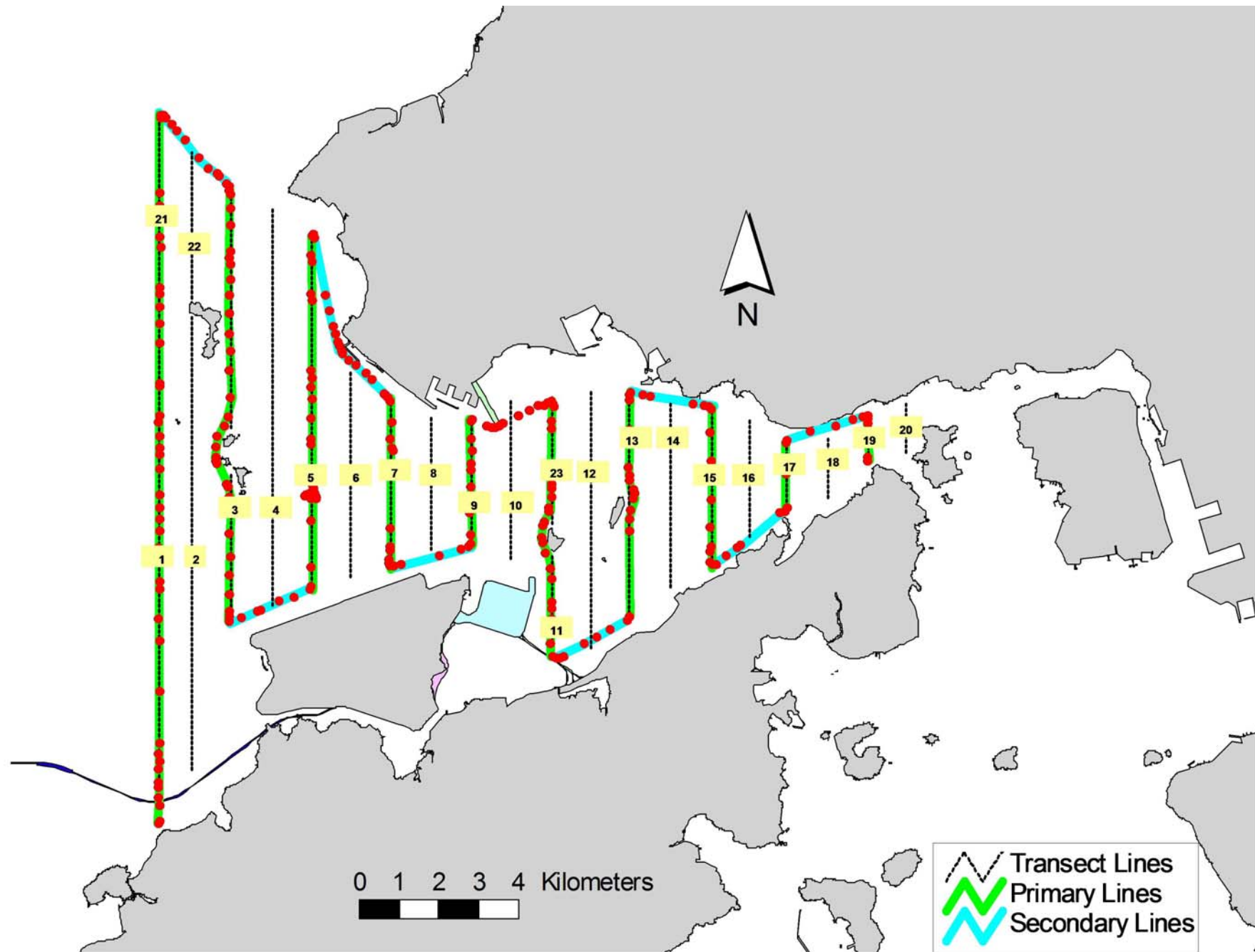


Figure 5. Survey Route on December 15th, 2015

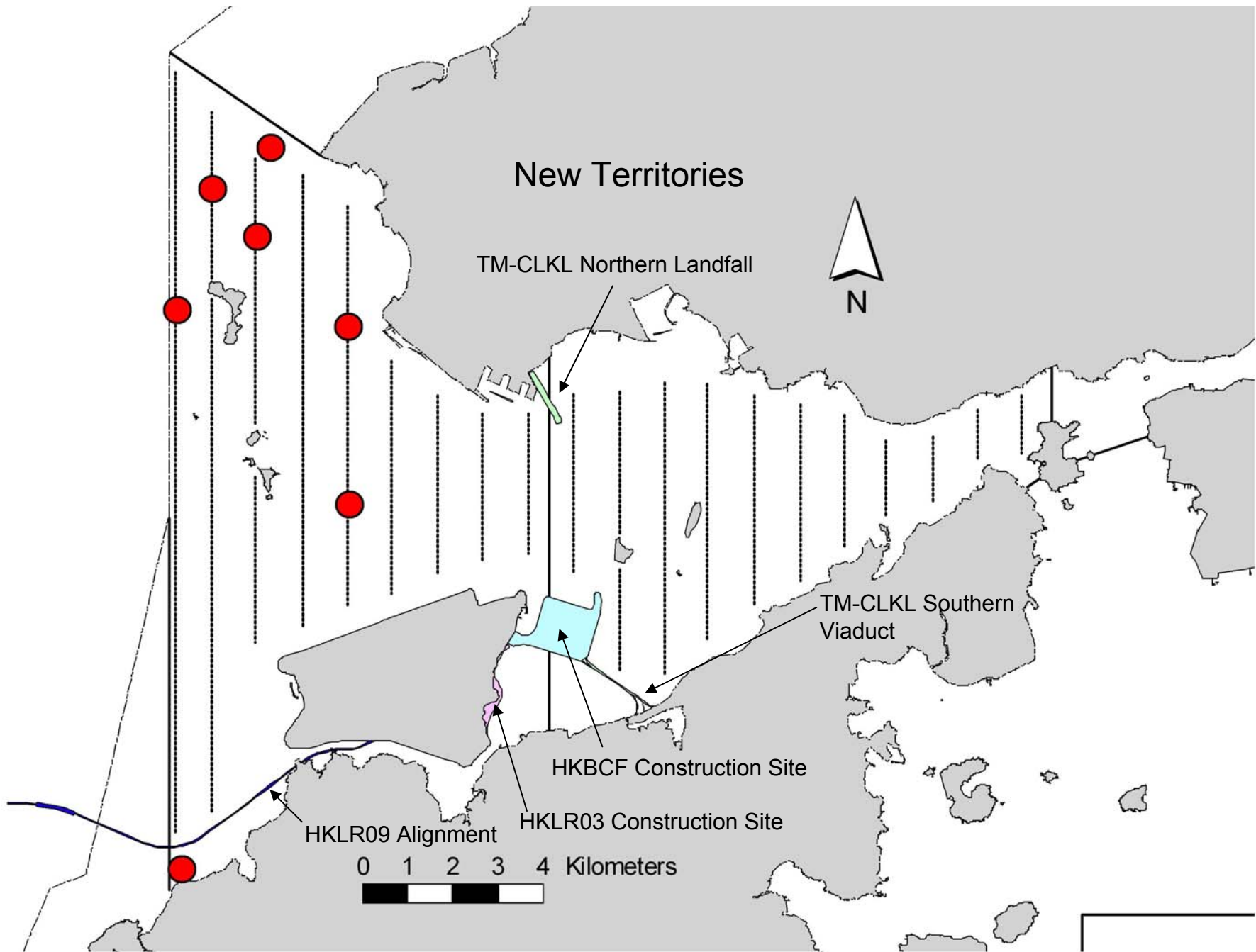


Figure 6. Distribution of Chinese White Dolphin Sightings During December 2015 HKLR03 Monitoring Surveys

Annex I. HKLR03 Survey Effort Database (December 2015)

(Abbreviations: BEAU = Beaufort Sea State; P = Primary Line Effort; S = Secondary Line Effort)

DATE	AREA	BEAU	EFFORT	SEASON	VESSEL	TYPE	P/S
2-Dec-15	NW LANTAU	2	34.36	WINTER	STANDARD31516	HKLR	P
2-Dec-15	NW LANTAU	3	6.71	WINTER	STANDARD31516	HKLR	P
2-Dec-15	NW LANTAU	2	12.06	WINTER	STANDARD31516	HKLR	S
2-Dec-15	NW LANTAU	3	0.90	WINTER	STANDARD31516	HKLR	S
2-Dec-15	NE LANTAU	1	0.77	WINTER	STANDARD31516	HKLR	P
2-Dec-15	NE LANTAU	2	15.53	WINTER	STANDARD31516	HKLR	P
2-Dec-15	NE LANTAU	2	10.30	WINTER	STANDARD31516	HKLR	S
7-Dec-15	NE LANTAU	2	18.39	WINTER	STANDARD31516	HKLR	P
7-Dec-15	NE LANTAU	3	1.75	WINTER	STANDARD31516	HKLR	P
7-Dec-15	NE LANTAU	2	9.11	WINTER	STANDARD31516	HKLR	S
7-Dec-15	NE LANTAU	3	1.35	WINTER	STANDARD31516	HKLR	S
7-Dec-15	NW LANTAU	2	3.22	WINTER	STANDARD31516	HKLR	P
7-Dec-15	NW LANTAU	3	28.58	WINTER	STANDARD31516	HKLR	P
7-Dec-15	NW LANTAU	2	0.27	WINTER	STANDARD31516	HKLR	S
7-Dec-15	NW LANTAU	3	7.53	WINTER	STANDARD31516	HKLR	S
9-Dec-15	NW LANTAU	2	1.20	WINTER	STANDARD31516	HKLR	P
9-Dec-15	NW LANTAU	3	13.30	WINTER	STANDARD31516	HKLR	P
9-Dec-15	NW LANTAU	4	14.71	WINTER	STANDARD31516	HKLR	P
9-Dec-15	NW LANTAU	5	2.69	WINTER	STANDARD31516	HKLR	P
9-Dec-15	NW LANTAU	2	1.10	WINTER	STANDARD31516	HKLR	S
9-Dec-15	NW LANTAU	3	1.84	WINTER	STANDARD31516	HKLR	S
9-Dec-15	NW LANTAU	4	4.72	WINTER	STANDARD31516	HKLR	S
9-Dec-15	NE LANTAU	2	12.20	WINTER	STANDARD31516	HKLR	P
9-Dec-15	NE LANTAU	3	7.10	WINTER	STANDARD31516	HKLR	P
9-Dec-15	NE LANTAU	2	8.50	WINTER	STANDARD31516	HKLR	S
9-Dec-15	NE LANTAU	3	2.30	WINTER	STANDARD31516	HKLR	S
15-Dec-15	NW LANTAU	2	10.12	WINTER	STANDARD31516	HKLR	P
15-Dec-15	NW LANTAU	3	17.24	WINTER	STANDARD31516	HKLR	P
15-Dec-15	NW LANTAU	4	13.57	WINTER	STANDARD31516	HKLR	P
15-Dec-15	NW LANTAU	2	2.83	WINTER	STANDARD31516	HKLR	S
15-Dec-15	NW LANTAU	3	10.47	WINTER	STANDARD31516	HKLR	S
15-Dec-15	NE LANTAU	2	15.04	WINTER	STANDARD31516	HKLR	P
15-Dec-15	NE LANTAU	3	1.60	WINTER	STANDARD31516	HKLR	P
15-Dec-15	NE LANTAU	2	10.16	WINTER	STANDARD31516	HKLR	S

Annex II. HKLR03 Chinese White Dolphin Sighting Database (December 2015)

(Abbreviations: STG# = Sighting Number; HRD SZ = Dolphin Herd Size; BEAU = Beaufort Sea State; PSD = Perpendicular Distance; BOAT ASSOC. = Fishing Boat Association; P/S: Sighting Made on Primary/Secondary Line)

DATE	STG #	TIME	HRD SZ	AREA	BEAU	PSD	EFFORT	TYPE	NORTHING	EASTING	SEASON	BOAT ASSOC.	P/S
2-Dec-15	1	1058	1	NW LANTAU	2	477	ON	HKLR	826399	804684	WINTER	NONE	P
2-Dec-15	2	1149	2	NW LANTAU	2	257	ON	HKLR	827946	806459	WINTER	NONE	P
7-Dec-15	1	1449	10	NW LANTAU	3	553	ON	HKLR	828945	805462	WINTER	NONE	P
9-Dec-15	1	1209	9	NW LANTAU	4	126	ON	HKLR	829795	806761	WINTER	NONE	S
15-Dec-15	1	1015	1	NW LANTAU	2	ND	OFF	HKLR	814683	804794	WINTER	NONE	N/A
15-Dec-15	2	1303	2	NW LANTAU	2	169	ON	HKLR	822328	808518	WINTER	NONE	P
15-Dec-15	3	1329	3	NW LANTAU	3	236	ON	HKLR	826060	808504	WINTER	NONE	P

Annex III. Individual dolphins identified during HKLR03 monitoring surveys in December 2015

ID#	DATE	STG#	AREA
CH34	09/12/15	1	NW LANTAU
NL33	07/12/15	1	NW LANTAU
	09/12/15	1	NW LANTAU
NL48	09/12/15	1	NW LANTAU
NL104	09/12/15	1	NW LANTAU
	15/12/15	3	NW LANTAU
NL136	09/12/15	1	NW LANTAU
NL202	07/12/15	1	NW LANTAU
NL210	07/12/15	1	NW LANTAU
NL220	09/12/15	1	NW LANTAU
	15/12/15	3	NW LANTAU
NL233	07/12/15	1	NW LANTAU
NL261	15/12/15	2	NW LANTAU
NL269	09/12/15	1	NW LANTAU
NL272	07/12/15	1	NW LANTAU
	15/12/15	2	NW LANTAU
NL280	07/12/15	1	NW LANTAU
NL284	07/12/15	1	NW LANTAU
NL286	02/12/15	1	NW LANTAU
	02/12/15	2	NW LANTAU
	07/12/15	1	NW LANTAU

NL286_20151202_1



NL286_20151202_2



NL33_20151207_1



NL202_20151207_1



NL210_20151207_1



NL233_20151207_1



NL272_20151207_1



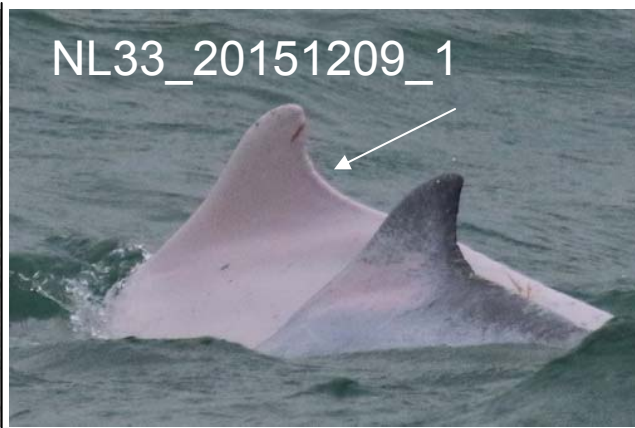
NL280_20151207_1



NL284_20151207_1



Annex IV. Photographs of Identified Individual Dolphins in December 2015 (HKLR03)



Annex IV. (cont'd)



Annex IV. (cont'd)