



**AUES PROJECT No.: TCS/00684/13**

**WSD CONTRACT NO. 1/WSD/13 -  
IMPROVEMENT OF FRESH WATER SUPPLY TO  
CHEUNG CHAU**

**QUARTERLY ENVIRONMENTAL MONITORING AND  
AUDIT (EM&A) REPORT (NO.12)–  
JANUARY TO MARCH 2017**

PREPARED FOR  
**CHINA ROAD- CHINA PIPELINE JOINT VENTURE**

**Quality Index**

<b>Date</b>	<b>Reference No.</b>	<b>Prepared By</b>	<b>Approved By</b>
15 May 2017	TCS00684/13/600/R0324v2	 Martin Li Assistant Environmental Consultant	 T.W. Tam Environmental Team Leader

<b>Version</b>	<b>Date</b>	<b>Description</b>
1	5 May 2017	First Submission
2	15 May 2017	Amended against IEC's comments



Member of the Surbana Jurong Group

Unit A-C, 27/F Ford Glory Plaza  
37- 39 Wing Hong Street  
Cheung Sha Wan, Kowloon, Hong Kong  
T +852 3995 8100 F +852 3995 8101 E hongkong@smec.com  
[www.smec.com](http://www.smec.com)

18 May 2017

Our ref: 7076243/L21817/AB/VC/MP/rw

Black & Veatch Hong Kong Limited  
25/F, Millennium City 6  
392 Kwun Tong Road  
Kung Tung, Kowloon

**By Email and Fax**  
(no. 2981 1146)

Attention: Mr. Ernest CHAN

Dear Sir

**Contract No. 1/WSD/13  
Independent Environmental Checker Services for  
Improvement of Freshwater Supply to Cheung Chau  
Verification of Quarterly EM&A Report**

Reference is made to the *Quarterly Environmental Monitoring and Audit (EM&A) Report (No.12) – January to March 2017 Version 2 (Ref No: TCS00684/13/600/R0324v2)* dated 15 May 2017 submitted by the Environmental Team via their e-mail on 15 May 2017.

We are pleased to inform you that we have no further comment on the captioned document. We herewith verify that the Quarterly EM&A Report for January to March 2017 is prepared in accordance with Section 9.5 of the *Final EM&A Manual for the Improvement of Fresh Water Supply to Cheung Chau – Investigation* (EIAO Register No.: AEIAR-151/2010).

Thank you very much for your kind attention. Please do not hesitate to contact the undersigned should you have any queries.

Yours faithfully  
for and on behalf of  
SMEC Asia Limited

**Vivian CHAN**  
Independent Environmental Checker

cc:	WSD	Mr. Lo	(By Fax: 2351 6949)
	CRBC	Mr. Raymond Miu	(By Fax: 2283 1689)
	AUES	Mr. Tam	(By Fax: 2959 6079)

## EXECUTIVE SUMMARY

- ES.01 Water Supplies Department (hereafter referred as “WSD”) is the Project Proponent and the Permit Holder of *Improvement of Fresh Water Supply to Cheung Chau* (hereinafter referred as “the Project”), which is a Designated Project to be implemented under Environmental Permit number EP-392/2010/B (hereinafter referred as “the EP-392/2010/B” or “the EP”).
- ES.02 Action-United Environmental Services and Consulting (AUES) has been appointed as the independent Environmental Team (ET) to implement the relevant EM&A programme. In the Project, China Road - China Pipeline Joint Venture (hereinafter “CRCPJV”) is the Main Contractor, SMEC Asia Limited as an Independent Environmental Checker (IEC), and Black & Veatch Hong Kong Limited is the representative engineer on site to manage the Project. The Works is predicted to take about 24 months.
- ES.03 As part of the project EM&A program, baseline monitoring was carried out by the ET in accordance with the project EM&A Manual from **4 January to 31 January 2014** to determine the ambient environmental conditions i.e. noise and marine water quality before commencement of construction works. The Baseline Report summarized the key findings and the rationale behind determining a set of Action and Limit Levels (A/L Levels) from the baseline data. It was submitted on **13 February 2014** and verified by IEC and endorsed by EPD before impact monitoring commencement on **28 March 2014**.
- ES.04 A set of A/L Levels serve as the yardsticks for assessing the acceptability of the environmental impact during the construction phase impact monitoring. They are statistical in nature and derived according to the criteria set out in the EM&A Manual and are given in the following tables.

**Table ES-1 Action and Limit Levels of Water Quality Monitoring**

Impact Station	Dissolved Oxygen (mg/L)				Depth Average of Turbidity (NTU)		Depth Average of SS (mg/L)	
	Depth Average of Surface & Middle		Bottom		Action Level	Limit Level	Action Level	Limit Level
	Action Level	Limit Level	Action Level	Limit Level				
W1	5.64	4.54	NA	NA	5.87	8.81	7.00	8.00
W2	5.16	5.02	NA	NA	5.50	5.66	7.00	8.00
W3	6.18	5.66	5.36	5.05	6.94	7.29	8.00	8.00
W4	5.94	4.95	5.71	5.54	7.50	8.03	7.85	11.57
W5	5.14	5.00	5.79	5.79	5.44	7.43	6.00	6.43
W6	5.92	4.26	6.04	4.49	6.82	7.10	8.00	9.59
W7	6.08	5.78	6.08	5.60	5.71	6.26	7.85	10.00

**Table ES-2 Action and Limit Levels of Construction Noise Monitoring**

Monitoring Location	Action Level	Limit Level in dB(A)
	Time Period: 0700-1900 hours on normal weekdays	
N1	When one or more documented complaints are received	75 dB(A)

- ES.05 This is the **12<sup>th</sup>** Quarterly Environmental Monitoring and Audit Report for the Project, covering the period from **1 January 2017** to **31 March 2017** (the Reporting Quarter).

## ENVIRONMENTAL MONITORING AND AUDIT ACTIVITIES

- ES.06 Environmental monitoring activities under the EM&A program in this Reporting Quarter are summarized in the following table.

**Table ES-3 Environmental Monitoring Activities in Reporting Quarter**

Issues	Environmental Monitoring Parameters / Inspection	Occasions
Construction Noise	$L_{eq(30min)}$ Daytime	13
Water Quality	Marine Water Sampling	38
	Total Residual Chlorine of In Situ Measurement	10
Inspection / Audit	ET Regular Environmental Site Inspection	13
	IEC Monthly Environmental Site Audit	3

**BREACH OF ACTION AND LIMIT (A/L) LEVELS**

ES.07 In this Reporting Quarter, no exceedance of construction noise was recorded. There was (1) Action Level exceedance and twenty-seven (27) Limit Level exceedance in water quality were recorded. The statistics of environmental exceedance, NOE issued and investigation of exceedance are summarized in the following table.

**Table ES-4 Summary NOE issued and investigation of exceedance in Reporting Quarter**

Environmental Issues	Monitoring Parameters	Action Level	Limit Level	Event & Action		
				NOE Issued	Investigation	Corrective Actions
Construction Noise	$L_{eq(30min)}$ Daytime	0	0	0	-	-
Water Quality	DO	0	0	0	-	-
	Turbidity	0	0	0	-	-
	SS	1	27	28	Not Project related	-

Note: NOE – Notification of Exceedance

**ENVIRONMENTAL COMPLAINT**

ES.08 No environmental complaint was recorded or received in this Reporting Quarter.

**NOTIFICATION OF SUMMONS AND SUCCESSFUL PROSECUTIONS**

ES.09 No environmental summons or successful prosecutions were recorded in this Reporting Quarter.

**REPORTING CHANGE**

ES.10 There were no reporting changes made in this Reporting Quarter.

**SITE INSPECTION BY EXTERNAL PARTIES**

ES.11 No joint site inspection with AFCD and EPD was held in the reporting period.

**FUTURE KEY ISSUES**

ES.12 As wet reason is approaching, water quality mitigation measures to prevent surface runoff into nearby water bodies or public areas should paid attention. Moreover, noise mitigation measures should be properly maintained to prevent construction noise as impacted surrounding resident.

**TABLE OF CONTENTS**

<b>1.0</b>	<b>INTRODUCTION</b>	<b>1</b>
	PROJECT BACKGROUND	1
	REPORT STRUCTURE	1
<b>2.0</b>	<b>PROJECT ORGANIZATION AND CONSTRUCTION PROGRESS</b>	<b>2</b>
	PROJECT ORGANIZATION AND MANAGEMENT STRUCTURE	2
	CONSTRUCTION PROGRESS	2
	SUMMARY OF ENVIRONMENTAL SUBMISSIONS	2
<b>3.0</b>	<b>SUMMARY OF MONITORING REQUIREMENTS</b>	<b>4</b>
	GENERAL	4
	MONITORING PARAMETERS	4
	MONITORING LOCATION	4
	MONITORING FREQUENCY AND PERIOD	5
	MONITORING EQUIPMENT	5
	MONITORING METHODOLOGY	6
	EQUIPMENT CALIBRATION	8
	METEOROLOGICAL INFORMATION	8
	DATA MANAGEMENT AND DATA QA/QC CONTROL	8
	DETERMINATION OF ACTION/LIMIT (A/L) LEVELS	8
<b>4.0</b>	<b>IMPACT MONITORING RESULTS</b>	<b>10</b>
	RESULTS OF WATER QUALITY MONITORING	10
	RESULTS OF CONSTRUCTION NOISE MONITORING	11
<b>5.0</b>	<b>WASTE MANAGEMENT</b>	<b>13</b>
	RECORDS OF WASTE QUANTITIES	13
<b>6.0</b>	<b>SITE INSPECTION</b>	<b>14</b>
<b>7.0</b>	<b>ENVIRONMENTAL COMPLAINT AND NON-COMPLIANCE</b>	<b>16</b>
	ENVIRONMENTAL COMPLAINT, SUMMONS AND PROSECUTION	16
<b>8.0</b>	<b>IMPLEMENTATION STATUS OF MITIGATION MEASURES</b>	<b>17</b>
	GENERAL REQUIREMENTS	17
<b>9.0</b>	<b>CONCLUSIONS AND RECOMMENDATIONS</b>	<b>18</b>
	CONCLUSIONS	18
	RECOMMENDATIONS	18

## **LIST OF TABLES**

TABLE 2-1	STATUS OF ENVIRONMENTAL LICENSES AND PERMITS
TABLE 3-1	SUMMARY OF THE MONITORING PARAMETERS OF EM&A REQUIREMENTS
TABLE 3-2	LOCATION OF MARINE WATER QUALITY MONITORING STATION
TABLE 3-3	LOCATION OF CONSTRUCTION NOISE MONITORING STATION
TABLE 3-4	MONITORING EQUIPMENT USED IN EM&A PROGRAM
TABLE 3-5	ACTION AND LIMIT LEVELS FOR WATER QUALITY
TABLE 3-6	ACTION AND LIMIT LEVELS FOR CONSTRUCTION NOISE
TABLE 4-1	RESULTS SUMMARY OF DEPTH AVERAGE (SURFACE & MIDDLE LAYER) OF DO (MG/L)
TABLE 4-2	RESULTS SUMMARY OF BOTTOM DEPTH OF DO (MG/L)
TABLE 4-3	RESULTS SUMMARY OF DEPTH AVERAGE OF TURBIDITY (NTU)
TABLE 4-4	RESULTS SUMMARY OF DEPTH AVERAGE OF SUSPENDED SOLIDS (MG/L)
TABLE 4-5	SUMMARY OF WATER QUALITY EXCEEDANCE
TABLE 4-6	SUMMARY OF IN SITU TOTAL RESIDUAL CHLORINE MEASUREMENT
TABLE 4-7	SUMMARY OF CONSTRUCTION NOISE MONITORING RESULTS – N1
TABLE 5-1	SUMMARY OF QUANTITIES OF INERT C&D MATERIALS
TABLE 5-2	SUMMARY OF QUANTITIES OF C&D WASTES
TABLE 6-1	SITE OBSERVATIONS
TABLE 7-1	STATISTICAL SUMMARY OF ENVIRONMENTAL COMPLAINTS
TABLE 7-2	STATISTICAL SUMMARY OF ENVIRONMENTAL SUMMONS
TABLE 7-3	STATISTICAL SUMMARY OF ENVIRONMENTAL PROSECUTION
TABLE 8-1	ENVIRONMENTAL MITIGATION MEASURES

## **LIST OF APPENDICES**

APPENDIX A	PROJECT SITE LAYOUT PLAN
APPENDIX B	ORGANIZATION STRUCTURE AND CONTACT DETAILS OF RELEVANT PARTIES
APPENDIX C	MASTER AND THREE MONTHS ROLLING CONSTRUCTION PROGRAMS
APPENDIX D	MONITORING LOCATIONS DESIGNATED IN THE EM&A MANUAL
APPENDIX E	EVENT AND ACTION PLAN
APPENDIX F	GRAPHICAL PLOTS OF IMPACT MONITORING
APPENDIX G	METEOROLOGICAL DATA
APPENDIX H	MONTHLY SUMMARY WASTE FLOW TABLE
APPENDIX I	IMPLEMENTATION SCHEDULE FOR ENVIRONMENTAL MITIGATION MEASURES (ISEMM)

## 1.0 INTRODUCTION

### PROJECT BACKGROUND

- 1.1 Water Supplies Department (hereafter referred as “WSD”) is the Project Proponent and the Permit Holder of *Improvement of Fresh Water Supply to Cheung Chau* (hereinafter referred as “the Project”), which is a Designated Project to be implemented under Environmental Permit number EP-392/2010/B (hereinafter referred as “the EP-392/2010/B” or “the EP”).
- 1.2 The scope of the works comprises primarily the laying of a new submarine fresh water main across the Adamasta Channel from Lantau Island to Cheung Chau by horizontal directional drilling method to enhance the reliability of fresh water supply to Cheung Chau. The Works commenced on 28 March 2014 and is predicted to undertaken about 24 months. The layout plan of project is shown in *Appendix A*.
- 1.3 Action-United Environmental Services and Consulting (AUES) has been appointed as the independent environmental team (ET) to implement the relevant EM&A programme of Water Supplies Department (WSD) Contract No. *1/WSD/13 – Improvement of Fresh Water Supply to Cheung Chau*. In the Project, **China Road - China Pipeline Joint Venture** (hereinafter “CRCPJV”) is a main-contractor, SMEC Asia Limited as an Independent Environmental Checker (IEC), and Black & Veatch Hong Kong Limited is the representative engineer on site to manage the Project.
- 1.4 According to the Particular Specification (PS) Section 25 and the EP-392/2010/B, overall scope of environmental monitoring including construction noise and water quality, and site environmental audit should be undertaken in accordance with the provided Environmental Monitoring and Audit Manual by an independent Environmental Team (ET).
- 1.5 The baseline monitoring program was carried out during the period between **4 January** and **31 January 2014** at the designated monitoring locations by the ET according to the EM&A Manual. The “Baseline Monitoring Report (R0014 Version 3)” had submitted to EPD before commencement of major construction works and approved by the IEC on 21 February 2014. Further to CRCPJV’s instructions, the EM&A program was commenced on 1 April 2014 and the monitoring schedule had been issued to relevant parties on 28 March 2014.
- 1.6 This is the **12<sup>th</sup>** quarterly Environmental Monitoring and Audit Report for the Project, covering the period from **1 January 2017** to **31 March 2017** (the Reporting Quarter).

### REPORT STRUCTURE

- 1.7 The Quarterly Environmental Monitoring and Audit (EM&A) Report is structured into the following sections:-

<b>SECTION 1</b>	<b>INTRODUCTION</b>
<b>SECTION 2</b>	<b>PROJECT ORGANIZATION AND CONSTRUCTION PROGRESS</b>
<b>SECTION 3</b>	<b>SUMMARY OF MONITORING REQUIREMENTS</b>
<b>SECTION 4</b>	<b>IMPACT MONITORING RESULTS</b>
<b>SECTION 5</b>	<b>WASTE MANAGEMENT</b>
<b>SECTION 6</b>	<b>SITE INSPECTIONS</b>
<b>SECTION 7</b>	<b>ENVIRONMENTAL COMPLAINTS AND NON-COMPLIANCE</b>
<b>SECTION 8</b>	<b>IMPLEMENTATION STATUES OF MITIGATION MEASURES</b>
<b>SECTION 9</b>	<b>IMPACT FORECAST</b>
<b>SECTION 10</b>	<b>CONCLUSIONS AND RECOMMENDATION</b>

## 2.0 PROJECT ORGANIZATION AND CONSTRUCTION PROGRESS

### PROJECT ORGANIZATION AND MANAGEMENT STRUCTURE

- 2.1 Organization structure and contact details of relevant parties with respect to on-site environmental management are shown in [Appendix B](#).

### CONSTRUCTION PROGRESS

- 2.2 The layout plans with location of construction activities carried out are enclosed in [Appendix A](#), the master and three month rolling construction programs are enclosed in [Appendix C](#) and the major construction activities undertaken in this Reporting Quarter are listed below:-

#### *1 to 31 January 2017*

Construction Activities	Potential Environmental Impact(s)	Environmental protection/mitigation measures
Landmain connection work at Cheung Chau	Noise generated during connection work.	Noise barrier was erected to reduce noise impact.
Swabbing and Pressure Test of DI pipe at Ha So Pai	No potential environmental impact since all the used water was treated before discharge.	NA
Cleaning and Sterilization of watermain	No potential environmental impact since all the chlorinated water for sterilization was treated before discharge.	NA

#### *1 February 2017 to 31 March 2017*

Construction Activities	Potential Environmental Impact(s)	Environmental protection/mitigation measures
Site clearance and reinstatement work at Cheung Chau Portion	Dust generated during backfilling work.	Water spraying was regularly applied.
Site clearance and reinstatement work at Ha So Pai	Dust generated during backfilling work.	Water spraying was regularly applied.

### SUMMARY OF ENVIRONMENTAL SUBMISSIONS

- 2.3 A summary of the relevant permits, licenses, and/or notifications on environmental protection for this Project in this Reporting Quarter is presented in [Table 2-1](#).

**Table 2-1 Status of Environmental Licenses and Permits**

Item	Description	License/Permit Status
1	Air pollution Control (Construction Dust)	Notified EPD on 28/10/2013 Ref. no. 366253
2	Chemical waste Producer Registration	Application date: 20/12/2013 Date approved: 30/01/2014 WPN: 8334-920-C3839-01
3	Water Pollution Control Ordinance (Discharge License)	Application date: 03/01/2014 License no. WT00018191-2014 Valid to 28/02/2019
4	Billing Account for Disposal of Construction Waste	Application no. :RS01134 Date approved: 1/11/2013 Account Number: 7018602
5	Environmental Permit	Issued by EPD on 15 June 2016 Permit Number: EP-392/2010/B



- 2.4 Baseline Monitoring Report (TCS00684/13/600/R0014Ver.3) for the Project was issued by the ETL and verified by the IEC on 24 March 2014. The report was also submitted to the EPD for endorsement.
- 2.5 According to Clause 3.9 EP-392/2010/B stipulation, the detailed proposal of the HDD technique and the management of the drilling fluid for construction of the Project were submitted on 9 July 2014.
- 2.6 According to Clause 4.3 EP-392/2010/B stipulation, the detailed proposal of the cleaning and sterilization process of the Project were submitted on 19 October 2016.

### 3.0 SUMMARY OF MONITORING REQUIREMENTS

#### GENERAL

3.1 The Environmental Monitoring and Audit requirements are set out in the Approved EM&A manual. Environmental aspects such as the construction noise and marine water quality were identified as the key issues during the construction phase of the Project. The detailed requirements are presented in the sub-sections below.

#### MONITORING PARAMETERS

3.2 The EM&A baseline and impact monitoring program covers the following environmental issues:

- Construction noise; and
- Marine Water quality;

3.3 A summary of the monitoring parameters is presented in *Table 3-1*:

**Table 3-1 Summary of the monitoring parameters of EM&A Requirements**

Environmental Issue	Parameters
Marine Water Quality	In-situ Measurements <ul style="list-style-type: none"> <li>• Dissolved Oxygen Concentration (mg/L);</li> <li>• Dissolved Oxygen Saturation ( % );</li> <li>• Turbidity (NTU);</li> <li>• pH value;</li> <li>• Salinity (ppt);</li> <li>• Water depth (m);</li> <li>• Temperature (°C); and</li> <li>• # Total residual chlorine (TRC) (mg/L)</li> </ul>
	Laboratory Analysis <ul style="list-style-type: none"> <li>• Suspended Solids (mg/L)</li> </ul>
Noise	<ul style="list-style-type: none"> <li>• <math>L_{eq(30min)}</math> during normal working hours; and</li> <li>• <math>L_{eq(5min)}</math> during Restricted Hours.</li> </ul>

# TRC monitoring would be carried out by the Main-Contractor.

#### MONITORING LOCATION

##### Water Quality

3.4 Two control stations (W8 and W9) and seven impact stations (W1-W7) were recommended in the *EM&A Manual Section 2.5*. Detailed and co-ordination of water quality monitoring stations is described in *Table 3-2* and the graphical is shown in *Appendix D*.

**Table 3-2 Location of Marine Water Quality Monitoring Station**

Station	Description	Co-ordinance	
		Easting	Northing
W1	Impact Station – Marine waters near the proposed launching site at Cheung Chau	820 704	808 688
W2	Impact Station – Marine waters near the proposed launching site at Cheung Chau	820 656	808 631
W3	Impact Station – Marine waters along the proposed water main alignment	820 445	809 036
W4	Impact Station – Marine waters along the proposed water main alignment	820 072	809 297
W5	Impact Station – Marine waters near the proposed reception site at Lantau	819 875	809 700
W6	Impact Station – Marine waters near the Cheung Sha Wan Fish Culture Zone	819 174	810 917
W7	Impact Station – Marine waters between the works and the Cheung Sha Wan Fish Culture Zone	820 055	810 523

Station	Description	Co-ordinate	
		Easting	Northing
W8	Control station – Marine waters of Adamasta Channel	821 328	810 240
W9	Control station – Marine waters of Adamasta Channel	819 045	807 953

### Construction Noise

- 3.5 According to *EM&A Manual Section 6.4*, only one noise sensitive receiver (NSR) is designated for the construction noise monitoring. The detailed construction noise monitoring station to under the Project is described in *Table 3-3* and graphical is shown in *Appendix D*.

**Table 3-3 Location of Construction Noise Monitoring Station**

Noise Monitoring Station	NSR ID	Location
N1	NSR2	Village house at No. 1A Tai Kwan Wan San Tsuen

### **MONITORING FREQUENCY AND PERIOD**

- 3.6 The requirements of impact monitoring are stipulated in *Sections 2.6* and *2.7* of the EM&A Manual and listed as follows.

#### Construction Noise Monitoring

Parameters : One set of Leq(30min) as 6 consecutive Leq(5min) between 0700-1900 hours on normal weekdays  
 Frequency : Once every week  
 Duration : Throughout out the construction period

#### Water Quality (Marine) Monitoring

Parameters : In-situ measurements including water depth, temperature, DO, pH, turbidity and salinity; and Suspended Solids is analyzed by HOKLAS-accredited laboratory.  
Frequency : Three days a week, at mid ebb and mid flood tides. The interval between 2 sets of monitoring will be more than 36 hours.  
Sampling : (i.) Three depths: 1m below water surface, 1m above sea bottom and at mid-depth when the water depth exceeds 6m.  
Depth : (ii.) If the water depth is between 3m and 6m, two depths: 1m below water surface and 1m above sea bottom.  
 (iii.) If the water depth is less than 3m, 1 sample at mid-depth is taken  
Duration : Throughout out the construction period

### **MONITORING EQUIPMENT**

#### Water Quality Monitoring

- i. **Dissolved Oxygen and Temperature Measuring Equipment** – The instrument should be a portable and weatherproof dissolved oxygen (DO) measuring instrument complete with cable and sensor, and use a DC power source. The equipment should be capable of measuring as included a DO level in the range of 0 – 20mg L-1 and 0 – 200% saturation; and a temperature of 0 – 45 degree Celsius.
- ii. **pH Meter** – The instrument shall consist of a potentiometer, a glass electrode, a reference electrode and a temperature-compensating device. It shall be readable to 0.1 pH in arrange of 0 to 14.
- iii. **Turbidity (NTU) Measuring Equipment** – The instrument should be a portable and weatherproof turbidity measuring instrument using a DC power source. It should have a photoelectric sensor capable of measuring turbidity between 0 - 1000 NTU.

- iv. **Water Sampling Equipment** – A water sampler should comprise a transparent PVC cylinder, with a capacity of not less than 2 litres, which can be effectively sealed with latex cups at both ends. The sampler should have a positive latching system to keep it open and prevent premature closure until released by a messenger when the sampler is at the selected water depth.
- v. **Water Depth Detector** – A portable, battery-operated echo sounder should be used for the determination of water depth at each designated monitoring station. This unit can either be hand held or affixed to the bottom of the work boat.
- vi. **Salinity Measuring Equipment** – A portable salinometer capable of measuring salinity in the range of 0 - 40 parts per thousand (ppt) should be provided for measuring salinity of the water at each monitoring location.
- vii. **Sample Containers and Storage** – Water samples for SS should be stored in high density polythene bottles with no preservative added, packed in ice (cooled to 4°C without being frozen).
- viii. **Monitoring Position Equipment** - A hand-held or boat-fixed type digital Differential Global Positioning System (DGPS) with way point bearing indication and Radio Technical Commission for maritime (RTCM) Type 16 error message ‘screen pop-up’ facilities (for real-time auto-display of error messages and DGPS corrections from the Hong Kong Hydrographic Office), or other equipment instrument of similar accuracy, should be provided and used during marine water monitoring to ensure the monitoring vessel is at the correct location before taking measurements.
- ix. **Suspended Solids Analysis** – Analysis of suspended solids shall be carried out in a HOKLAS or other international accredited laboratory.

Noise Monitoring

- 3.7 Sound level meter in compliance with the *International Electrotechnical Commission Publications 651: 1979 (Type 1) and 804: 1985 (Type 1)* specifications shall be used for carrying out the noise monitoring. The sound level meter shall be checked using an acoustic calibrator. The wind speed shall be checked with a portable wind speed meter capable of measuring the wind speed in m s<sup>-1</sup>.
- 3.8 The monitoring equipment using for the EM&A program were proposed by the ET and verified by the IEC prior to the commencement of the monitoring. Details of the equipment used for impact monitoring are listed in **Table 3-4** below.

**Table 3-4 Monitoring Equipment Used in EM&A Program**

Equipment	Model
<b>Construction Noise</b>	
Integrating Sound Level Meter	B&K Type 2238
Calibrator	B&K Type 4231
Portable Wind Speed Indicator	Testo Anemometer
<b>Water quality</b>	
A Digital Global Positioning System	GPS12 Garmin
Water Depth Detector	Eagle Sonar
Water Sampler	A 2-litre transparent PVC cylinder with latex cups at both ends
Thermometer & DO meter	YSI ProDSS Digital Sampling System Water Quality Meter
pH meter	
Turbidimeter	
Salinometer	
Sample Container	High density polythene bottles (provided by laboratory)
Storage Container	‘Willow’ 33-litter plastic cool box with Ice pad
Suspended Solids	HOKLAS-accredited laboratory (ALS Technichem (HK) Pty Ltd)
Total residual chlorine	HANNA HI96724C Free & Total Chlorine ISM

## **MONITORING METHODOLOGY**

### **Water Quality**

- 3.9 Water quality monitoring is conducted at the designated locations. The sampling produce with the in-situ monitoring are presented as below:

#### *Sampling Procedures*

- 3.10 A Digital Global Positioning System (GPS) is used to identify the designated monitoring stations prior to water sampling. A portable, battery-operated echo sounder is used for the determination of water depth at each station. At each station, marine water sample is collected at three depths: 1m below water surface, 1m above sea bottom and at mid-depth when the water depth exceeds 6m. Samples at 1m below water surface and 1m above sea bottom are collected when the water depth is between 3m and 6m. Only 1 sample at mid-depth is taken when the water depth is below 3m.
- 3.11 The marine water sampler is lowered into the water body at the predetermined depth. The trigger system of the sampler should been activated with a messenger. The opening ends of the sampler then is closed accordingly and water sample is collected.
- 3.12 The sample container is rinsed with a portion of the water sample. The water sample then is transferred to the high-density polythene bottles as provided by the laboratory, labeled with a unique sample number and sealed with a screw cap.
- 3.13 Before commencement of the sampling, general information such as the date and time of sampling, weather condition and tidal condition as well as the personnel responsible for the monitoring are to be recorded on the monitoring field data sheet.
- 3.14 A 'Willow' 33-litter plastic cool box packed with ice is used to preserve the collected water samples prior to arrival at the laboratory for chemical determination. The water temperature of the cool box is maintained at a temperature as close to 4<sup>0</sup>C as possible without being frozen. Samples collected are delivered to the laboratory upon collection

### ***In-situ Measurement***

#### **Positioning of Monitoring Locations**

- 3.15 A digital Global Positioning System (GPS) is used during marine water monitoring to ensure the monitoring vessel is at the correct location when taking measurement and samples.

#### **Depth, Dissolved Oxygen (DO), Temperature, Turbidity, Salinity and pH value**

- 3.16 The *YSI ProDSS Digital Sampling System Water Quality Meter* are used for marine water in-situ measures, which automates the measurements and data logging of depth, temperature, dissolved oxygen, dissolved oxygen saturation, turbidity, pH and salinity simultaneously. Before each round of monitoring, the dissolved oxygen probe is calibrated by the wet bulb method and the turbidity and salinity probes checked with distilled water.

#### **Total Residual Chlorine**

- 3.17 Total residual chlorine is measured in-situ using approved test kit *HANNA HI96724C Free & Total Chlorine ISM* at the effluent discharge point. When de-chlorinated water is being discharged, Total Residual Chlorine measurement is conducted continuous hourly.

#### **Laboratory Analysis**

- 3.18 All water samples are analyzed with Suspended Solids (SS) as specified in the *EM&A Manual* by a local HOKLAS-accredited testing laboratory (ALS Technichem (HK) Pty Ltd HOKLAS registration no. 66). SS analysis is determined by the laboratory upon receipt of the water samples using HOKLAS accredited analytical methods namely ALS Method EA-025.

### **Construction Noise**

- 3.19 Noise measurements were taken in terms of the A-weighted equivalent sound pressure level ( $L_{eq}$ ) measured in decibels (dB). Supplementary statistical results ( $L_{10}$  and  $L_{90}$ ) were also obtained for reference.
- 3.20 Sound level meters listed in **Table 3-4** are complied with the *International Electrotechnical Commission Publications 651: 1979 (Type 1) and 804: 1985 (Type 1)* specifications, as recommended in Technical Memorandum (TM) issued under the *Noise Control Ordinance (NCO)*.
- 3.21 During the monitoring, all noise measurements were performed with the meter set to FAST response and on the A-weighted equivalent continuous sound pressure level ( $L_{eq}$ ).  $L_{eq(30min)}$  in six consecutive  $L_{eq(5min)}$  measurements were used as the monitoring parameter for the time period between 0700-1900 hours on weekdays; and also  $L_{eq(15min)}$  in three consecutive  $L_{eq(5min)}$  measurements is used as monitoring parameter for other time periods (e.g. during restricted hours), if necessary.
- 3.22 During the measurement, the sound level meter is mounted on a tripod with a height of 1.2m above ground and placed at the assessment point and oriented such that the microphone is pointed to the site with the microphone facing perpendicular to the line of sight. The windshield is fitted for all measurements. The assessment point is normally set as free-field situation for the measurement.
- 3.23 Prior of noise measurement, the accuracy of the sound level meter is checked using an acoustic calibrator generating a known sound pressure level at a known frequency. The checking was performed before and after the noise measurement.

### **EQUIPMENT CALIBRATION**

- 3.24 The sound level meter and calibrator are calibrated and certified by a laboratory accredited under HOKLAS or any other international accreditation scheme at yearly basis.
- 3.25 The Multi-parameter Water Quality Monitoring System is calibrated by HOKLAS accredited laboratory of three month intervals.

### **METEOROLOGICAL INFORMATION**

- 3.26 The meteorological information during the construction phase is obtained from Cheung Chau Station of the Hong Kong Observatory (HKO).

### **DATA MANAGEMENT AND DATA QA/QC CONTROL**

- 3.27 The impact monitoring data are handled by the ET's systematic data recording and management, which complies with in-house Quality Management System. Standard Field Data Sheets (FDS) are used in the impact monitoring program.
- 3.28 The monitoring data recorded in the equipment e.g. noise meter and Multi-parameter Water Quality Monitoring System are downloaded directly from the equipment at the end of each monitoring day. The downloaded monitoring data are input into a computerized database properly maintained by the ET. The laboratory results are input directly into the computerized database and QA/QC checked by personnel other than those who input the data. For monitoring activities require laboratory analysis, the local laboratory follows the QA/QC requirements as set out under the HOKLAS scheme for all laboratory testing.

### **DETERMINATION OF ACTION/LIMIT (A/L) LEVELS**

- 3.29 According to the approved Environmental Monitoring and Audit Manual, the construction noise and water quality criteria were set up, namely Action and Limit levels are listed in **Tables 3-5 and 3-6** as below.

**Table 3-5 Action and Limit Levels for Water Quality**

Impact Station	Dissolved Oxygen (mg/L)				Depth Average of Turbidity (NTU)		Depth Average of SS (mg/L)	
	Depth Average of Surface & Middle		Bottom					
	Action Level	Limit Level	Action Level	Limit Level	Action Level	Limit Level	Action Level	Limit Level
W1	5.64	4.54	NA	NA	5.87	8.81	7.00	8.00
W2	5.16	5.02	NA	NA	5.50	5.66	7.00	8.00
W3	6.18	5.66	5.36	5.05	6.94	7.29	8.00	8.00
W4	5.94	4.95	5.71	5.54	7.50	8.03	7.85	11.57
W5	5.14	5.00	5.79	5.79	5.44	7.43	6.00	6.43
W6	5.92	4.26	6.04	4.49	6.82	7.10	8.00	9.59
W7	6.08	5.78	6.08	5.60	5.71	6.26	7.85	10.00

**Table 3-6 Action and Limit Levels for Construction Noise**

Monitoring Location	Action Level	Limit Level in dB(A)
	Time Period: 0700-1900 hours on normal weekdays	
N1	When one or more documented complaints are received	75 dB(A)

*If works are to be carried out during restricted hours, the conditions stipulated in the construction noise permit issued by the NCA have to be followed.*

- 3.30 Should non-compliance of the environmental quality criteria occurs, remedial actions will be triggered according to the Event and Action Plan enclosed in [Appendix E](#).

#### 4.0 IMPACT MONITORING RESULTS

4.1 Further to CRCPJV's notification, the EM&A program was commenced on 1 April 2014. The works undertaken during the reporting quarter has been illustrated in [Appendix C](#). The monitoring results are presented in the following sub-sections. The graphical plots of the trends in monitored parameters over the Reporting Quarter are presented in [Appendix F](#).

#### RESULTS OF WATER QUALITY MONITORING

4.2 In this Reporting Quarter, **38** monitoring days have been carried out at the designated monitoring locations.

4.3 Monitoring results of the three key parameters, dissolved oxygen (DO), turbidity and suspended solids, in this Reporting Quarter are summarized in [Tables 4-1 to 4-4](#).

**Table 4-1 Results Summary of Depth Average (Surface & Middle Layer) of DO (mg/L)**

Tidal		W1	W2	W3	W4	W5	W6	W7	W8	W9
Mid-Ebb	Average	7.17	7.15	7.20	7.18	7.28	7.25	7.26	7.26	7.18
	Min	5.86	5.88	6.19	6.03	6.09	6.12	6.12	6.14	6.10
	Max	8.73	8.53	8.56	8.73	9.00	8.68	8.70	8.89	8.65
Mid-Flood	Average	7.22	7.19	7.22	7.27	7.29	7.33	7.28	7.23	7.19
	Min	5.89	5.96	6.22	6.19	6.01	6.16	6.18	6.15	6.10
	Max	8.87	8.67	9.19	9.02	9.19	8.79	9.11	8.43	8.39

**Table 4-2 Results Summary of Bottom Depth of DO (mg/L)**

Tidal		W1	W2	W3	W4	W5	W6	W7	W8	W9
Mid-Ebb	Average	NA	NA	6.97	6.97	7.11	7.05	7.08	7.05	6.89
	Min	NA	NA	6.00	5.91	5.98	6.05	6.08	6.06	5.94
	Max	NA	NA	8.46	8.26	8.42	8.66	8.62	8.54	8.38
Mid-Flood	Average	NA	NA	6.95	7.02	7.08	6.99	6.98	6.92	6.96
	Min	NA	NA	6.04	6.01	5.98	6.06	6.09	5.90	5.95
	Max	NA	NA	8.29	8.33	8.24	8.40	8.24	8.41	8.21

**Table 4-3 Results Summary of Depth Average of Turbidity (NTU)**

Tidal		W1	W2	W3	W4	W5	W6	W7	W8	W9
Mid-Ebb	Average	2.94	2.88	3.30	3.59	3.06	3.27	3.21	3.41	3.69
	Min	1.12	1.03	1.31	1.41	1.43	1.09	1.20	1.32	0.98
	Max	5.82	5.08	5.92	6.69	5.21	6.68	5.66	7.31	8.07
Mid-Flood	Average	3.03	2.93	3.62	3.59	3.14	3.00	3.23	3.56	3.62
	Min	0.86	0.87	0.91	0.93	0.84	0.86	0.82	0.93	0.98
	Max	5.29	5.24	6.80	6.92	5.36	6.56	5.62	8.43	6.99

**Table 4-4 Results Summary of Depth Average of Suspended Solids (mg/L)**

Tidal		W1	W2	W3	W4	W5	W6	W7	W8	W9
Mid-Ebb	Average	5.07	5.43	5.88	5.95	5.17	5.85	5.83	5.81	6.32
	Min	1.00	1.50	1.50	1.67	1.75	1.50	1.80	1.33	1.75
	Max	9.00	13.00	13.00	14.33	13.50	10.67	12.33	11.67	12.67
Mid-Flood	Average	5.16	5.20	5.75	5.80	5.29	5.50	5.60	6.04	6.66
	Min	1.50	1.00	1.83	1.67	1.00	1.40	1.60	1.80	1.50
	Max	10.50	14.00	14.17	13.17	17.00	13.17	14.00	13.50	13.17

Remark: If the monitoring result is less than 1, the average was calculated by assuming the monitored value to be 1.

4.4 During the Reporting Quarter, field measurements showed that temperatures of marine water were within 16.8°C to 24.2°C; the salinity concentrations within 29.88 to 34.76 ppt and pH values within 7.32 to 9.95.

4.5 A summary of exceedances for the three parameters: dissolved oxygen (DO), turbidity and suspended solids is shown in [Table 4-5](#).



**Table 4-5 Summary of Water Quality Exceedance**

Station	DO (Ave of Top & mid-depth)		DO Bottom Depth		Turbidity (Depth Ave.)		SS (Depth Ave)		Total Exceedance	
	Action	Limit	Action	Limit	Action	Limit	Action	Limit	Action	Limit
W1	0	0	0	0	0	0	0	4	0	4
W2	0	0	0	0	0	0	0	4	0	4
W3	0	0	0	0	0	0	0	4	0	4
W4	0	0	0	0	0	0	0	4	0	4
W5	0	0	0	0	0	0	0	4	0	4
W6	0	0	0	0	0	0	1	3	1	3
W7	0	0	0	0	0	0	0	4	0	4
<b>No of Exceedance</b>	0	0	0	0	0	0	1	27	1	27

4.6 In this Reporting Quarter, one (1) Action Level exceedances and twenty-seven (27) Limit Level exceedance in water quality were recorded.

4.7 For the exceedances of the last Reporting Quarter, investigations had been carried out and it is considered that the exceedances were not related to the work under the project since no marine work was being taken. The possible reasons for the exceedance may be likely due to natural variation as the baseline monitoring was carried during winter. Formal investigation reports had been submitted for IEC's endorsement.

**RESULTS OF IN SITU TOTAL RESIDUAL CHLORINE MEASUREMENT**

4.8 Cleaning and sterilization of watermain was carried out from 18 to 19 January 2017, in-situ total residual chlorine measurement of the de-chlorinated water discharge was conducted hourly during the discharge and the results are presented in *Table 4-6*. All the measurement results are below the allowed maximum chlorine level 0.2 mg/L for discharge of dechlorinated water discharge stated in EM&A Manual.

**Table 4-6 Summary of in situ total residual chlorine measurement**

Date	Time of Measurement	Measurement Result (mg/L)
18/1/2017	17:04	0.04
18/1/2017	18:01	0.03
18/1/2017	19:06	0.05
19/1/2017	07:05	0.08
19/1/2017	08:01	0.05
19/1/2017	09:07	0.10
19/1/2017	10:00	0.08
19/1/2017	11:02	0.01
19/1/2017	11:59	0.03
19/1/2017	13:03	0.08

**RESULTS OF CONSTRUCTION NOISE MONITORING**

4.9 The sound level was set in a free field situation during construction noise measurement. Therefore, a façade correction of +3dB(A) has been added according to acoustical principles and EPD guidelines.

4.10 In this Reporting Quarter, a total of **13** events of construction noise measurements were conducted. A summary of construction noise monitoring at the identified locations during the Reporting Quarter are summarized in *Table 4-7*.

**Table 4-7 Summary of Construction Noise Monitoring Results – N1**

Station	Corrected Leq(30min) (dB(A))*	
	Max	Min
N1	61	56
Record Date	2, 22 February & 15 March 2017	17 January 2017

(\*) A façade correction of +3 dB(A) has been added according to acoustical principles and EPD guidelines.

- 4.11 As showed in the above table, the results were well below 75dB(A), also no noise complaint (which is an Action Level exceedance) was received by the RE, WSD, EPD and the Contractor. Hence, no Action or Limit Level exceedance was triggered during in this quarter. The graphical plot is shown in *Appendix F*.
- 4.12 The meteorological information during reporting quarter extracted from Cheung Chau Station of the Hong Kong Observatory (HKO) shows in *Appendix G*.

## 5.0 WASTE MANAGEMENT

5.1 Waste management was carried out by an on-site Environmental Officer or an Environmental Supervisor from time to time.

### RECORDS OF WASTE QUANTITIES

All types of waste arising from the construction work are classified into the following:

- Construction & Demolition (C&D) Material;
- Chemical Waste;
- General Refuse; and
- Excavated Soil.

5.2 The quantities of waste for disposal in this Reporting Period are summarized in [Table 5-1](#) and [5-2](#) and the Monthly Summary Waste Flow Table is shown in [Appendix H](#). Whenever possible, materials were reused on-site as far as practicable.

**Table 5-1 Summary of Quantities of Inert C&D Materials**

Type of Waste	Quantity			Disposal Location
	Jan 17	Feb 17	Mar 17	
C&D Materials (Inert) ('000 m <sup>3</sup> )	0	0	0	-
Reused in this Contract (Inert) ('000 m <sup>3</sup> )	0	0	0	-
Reused in other Projects (Inert) ('000 m <sup>3</sup> )	0	0	0	-
Disposal as Public Fill (Inert) ('000 m <sup>3</sup> )	27.175	0	0	Outlying Island Transfer facility (Cheung Chau Station)

**Table 5-2 Summary of Quantities of C&D Wastes**

Type of Waste	Quantity			Disposal Location
	Oct 16	Nov 16	Dec 16	
Recycled Metal ('000kg)	0	0	0	-
Recycled Paper / Cardboard Packing ('000kg)	0	0	0	-
Recycled Plastic ('000kg)	0	0	0	-
Chemical Wastes ('000kg)	0	0	0	-
General Refuses ('000 m <sup>3</sup> )	7.7	9.77	7.04	Outlying Island Transfer facility (Cheung Chau Station)

5.3 There was no site effluent discharged but the estimated volume of surface runoff was less than 50m<sup>3</sup> in this quarterly period.

## 6.0 SITE INSPECTION

6.1 According to the Environmental Monitoring and Audit Manual, the environmental site inspection should be formulated by ET Leader. Regular environmental site inspections had been carried out by the ET to confirm the environmental performance. 13 weekly site inspections were carried out on **3, 10, 20 and 24 January 2017; 3, 7, 14, 21 and 28 February 2017; and 7, 14, 21 and 28 March 2017** with the Representatives of the Engineer and the Contractor to evaluate the site environmental performance in this Reporting Quarter. Furthermore, joint site inspection with IEC also undertaken on **20 January 2017, 21 February 2017 and 14 March 2017**. No non-compliance was noted. However, minor deficiencies were observed during weekly site inspection or joint site inspection.

6.2 Observations for the site inspections within this Reporting Quarter are summarized in *Table 6-1*.

**Table 6-1 Site Observations**

Date	Findings / Deficiencies	Follow-Up Status
3 January 2017	<u>Observation:</u> <ul style="list-style-type: none"> <li>Free-standing chemical containers were observed. The Contractor should place these containers into drip tray to prevent land contamination.</li> </ul>	Chemical container was placed into drip tray.
10 January 2017	<u>Observation:</u> <ul style="list-style-type: none"> <li>No adverse environmental issue was observed.</li> </ul>	Nil.
20 January 2017	<u>Observation:</u> <ul style="list-style-type: none"> <li>Stockpile without cover was observed. The Contractor should cover the stockpile with tarpaulin sheet to reduce dust generation.</li> </ul>	Stockpile was covered properly.
24 January 2017	<u>Observation:</u> <ul style="list-style-type: none"> <li>Stagnant water was observed at drainage channel on site. The Contractor should remove the stagnant water to prevent mosquito breeding.</li> </ul>	Stagnant water was removed.
3 February 2017	<u>Observation:</u> <ul style="list-style-type: none"> <li>Free-standing chemical container without drip tray was observed. The Contractor should place the chemical containers into drip tray to avoid land contamination.</li> </ul>	Chemical containers were placed into drip tray.
7 February 2017	No environmental issue was observed during the site inspection.	NA
14 February 2017	No environmental issue was observed during the site inspection.	NA
21 February 2017	<u>Observation:</u> <ul style="list-style-type: none"> <li>Concrete bund was missing near the seaside drainage channel. The Contractor should provide concrete bund to avoid site runoff from discharging into marine water without proper treatment.</li> </ul>	Concrete bund was provided along the seaside drainage channel.

28 February 2017	<u>Observation:</u> <ul style="list-style-type: none"> <li>Stockpile without proper cover was observed. The Contractor should cover the stockpile well with tarpaulin sheet to reduce dust generation.</li> </ul>	Stockpile was removed.
7 March 2017	No environmental issue was observed during the site inspection.	NA
14 March 2017	<u>Observation:</u> <ul style="list-style-type: none"> <li>Stagnant water was observed at drip tray. The Contractor should remove the stagnant water to prevent mosquito breeding.</li> </ul>	Stagnant water was removed.
21 March 2017	<u>Reminder:</u> <ul style="list-style-type: none"> <li>The Contractor was reminded to pump the runoff water at sump pit to the WetSep regularly to avoid overflow at the drainage channel.</li> </ul>	Not required for reminder.
28 March 2017	No environmental issue was observed during the site inspection.	NA

## 7.0 ENVIRONMENTAL COMPLAINT AND NON-COMPLIANCE

### ENVIRONMENTAL COMPLAINT, SUMMONS AND PROSECUTION

7.1 No environmental complaint, summons and prosecution was received in this reporting period. The statistical summary table of environmental complaint is presented in *Tables 7-1, 7-2* and *7-3*.

**Table 7-1 Statistical Summary of Environmental Complaints**

Reporting Period	Environmental Complaint Statistics		
	Frequency	Cumulative	Complaint Nature
28 March to December 2014	0	0	NA
January to December 2015	0	0	NA
January – December 2016	0	0	NA
January 2017	0	0	NA
February 2017	0	0	NA
March 2017	0	0	NA

**Table 7-2 Statistical Summary of Environmental Summons**

Reporting Period	Environmental Summons Statistics		
	Frequency	Cumulative	Complaint Nature
28 March to December 2014	0	0	NA
January to December 2015	0	0	NA
January – December 2016	0	0	NA
January 2017	0	0	NA
February 2017	0	0	NA
March 2017	0	0	NA

**Table 7-3 Statistical Summary of Environmental Prosecution**

Reporting Period	Environmental Prosecution Statistics		
	Frequency	Cumulative	Complaint Nature
28 March to December 2014	0	0	NA
January to December 2015	0	0	NA
January – December 2016	0	0	NA
January 2017	0	0	NA
February 2017	0	0	NA
March 2017	0	0	NA

## 8.0 IMPLEMENTATION STATUS OF MITIGATION MEASURES

### GENERAL REQUIREMENTS

- 8.1 The environmental mitigation measures that recommended in the Implementation Schedule for Environmental Mitigation Measures (ISEMM) in the approved EM&A Manual covered the issues of dust, noise, water and waste and they are showed [Appendix I](#).
- 8.2 CRCPJV had been implementing the required environmental mitigation measures according to the Environmental Monitoring and Audit Manual subject to the site condition. Environmental mitigation measures generally implemented by CRCPJV in this Reporting Quarter are summarized in [Table 8-1](#).

**Table 8-1 Environmental Mitigation Measures**

Issues	Environmental Mitigation Measures
Water Quality	<ul style="list-style-type: none"> <li>• Wastewater were appropriately treated by treatment facilities;</li> <li>• Drainage channels were provided to convey run-off into the treatment facilities; and</li> <li>• Drainage systems were regularly and adequately maintained.</li> </ul>
Air Quality	<ul style="list-style-type: none"> <li>• Regular watering to reduce dust emissions from all exposed site surface, particularly during dry weather;</li> <li>• Frequent watering for particularly dusty construction areas and areas close to air sensitive receivers;</li> <li>• Cover all excavated or stockpile of dusty material by impervious sheeting or sprayed with water to maintain the entire surface wet;</li> <li>• Public roads around the site entrance/exit had been kept clean and free from dust; and</li> <li>• Tarpaulin covering of any dusty materials on a vehicle leaving the site.</li> </ul>
Noise	<ul style="list-style-type: none"> <li>• Good site practices to limit noise emissions at the sources;</li> <li>• Use of quite plant and working methods;</li> <li>• Use of site hoarding or other mass materials as noise barrier to screen noise at ground level of NSRs;</li> <li>• Use of shrouds/temporary noise barriers to screen noise from relatively static PMEs;</li> <li>• Scheduling of construction works outside school examination period in critical area; and</li> <li>• Alternative use of plant items within one worksite, where practicable.</li> </ul>
Waste and Chemical Management	<ul style="list-style-type: none"> <li>• Excavated material should be reused on site as far as possible to minimize off-site disposal. Scrap metals or abandoned equipment should be recycled if possible;</li> <li>• Waste arising should be kept to a minimum and be handled, transported and disposed of in a suitable manner;</li> <li>• The Contractor should adopt a trip ticket system for the disposal of C&amp;D materials to any designed public filling facility and/or landfill; and</li> <li>• Chemical waste shall be handled in accordance with the Code of Practice on the Packaging, Handling and Storage of Chemical Wastes.</li> </ul>
General	<ul style="list-style-type: none"> <li>• The site was generally kept tidy and clean.</li> </ul>

## 9.0 CONCLUSIONS AND RECOMMENDATIONS

### CONCLUSIONS

- 9.1 This is **12<sup>th</sup>** quarterly EM&A report presenting the monitoring results and inspection findings for the Reporting Period from **1 January 2017** to **31 March 2017**.
- 9.2 No noise complaint (which is an Action Level exceedance) was received and no construction noise measurement results that exceeded the Limit Level were recorded in the Reporting Quarter. No NOEs or the associated corrective actions were therefore issued.
- 9.3 In this Reporting Quarter, one (1) Action Level exceedances and twenty-seven (27) Limit Level exceedance in water quality were recorded.
- 9.4 No documented complaint, notification of summons or successful prosecution was received by the Project.
- 9.5 The ET had carried out site inspection on **3, 10, 20 and 24 January 2017; 3, 7, 14, 21 and 28 February 2017; and 7, 14, 21 and 28 March 2017** with the Representatives of the Engineer and the Contractor. Furthermore, joint site inspection with IEC also undertaken on **20 January 2017, 21 February 2017** and **14 March 2017**. No non-compliance was noted; however minor deficiencies were observed during site inspection. The deficiencies has rectified within the specified deadlines. The environmental performance of the Project was therefore considered satisfactory.

### RECOMMENDATIONS

- 9.6 As wet reason is approaching, water quality mitigation measures to prevent surface runoff into nearby water bodies or public areas should paid attention. Moreover, noise mitigation measures should be properly maintained to prevent construction noise as impacted surrounding resident.
- 9.7 To control the site performance on waste management, the CRCPJV shall ensure that all solid and liquid waste management works are fully in compliance with the relevant license/permit requirements, such as the effluent discharge licence and the chemical waste producer registration. CRCPJV is also reminded to implement the recommended environmental mitigation measures according to the Environmental Monitoring and Audit Manual.



## **Appendix A**

### **Project Site Layout Plan and Location of Construction Works in the Reporting Period**

MAP NOS.  
 1-HAWKES, 1-HW/13, 1-HW/14, 1-HW/15, 1-HW/16, 1-HW/17, 1-HW/18, 1-HW/19, 1-HW/20, 1-HW/21, 1-HW/22, 1-HW/23, 1-HW/24, 1-HW/25, 1-HW/26, 1-HW/27, 1-HW/28, 1-HW/29, 1-HW/30, 1-HW/31, 1-HW/32, 1-HW/33, 1-HW/34, 1-HW/35, 1-HW/36, 1-HW/37, 1-HW/38, 1-HW/39, 1-HW/40, 1-HW/41, 1-HW/42, 1-HW/43, 1-HW/44, 1-HW/45, 1-HW/46, 1-HW/47, 1-HW/48, 1-HW/49, 1-HW/50, 1-HW/51, 1-HW/52, 1-HW/53, 1-HW/54, 1-HW/55, 1-HW/56, 1-HW/57, 1-HW/58, 1-HW/59, 1-HW/60, 1-HW/61, 1-HW/62, 1-HW/63, 1-HW/64, 1-HW/65, 1-HW/66, 1-HW/67, 1-HW/68, 1-HW/69, 1-HW/70, 1-HW/71, 1-HW/72, 1-HW/73, 1-HW/74, 1-HW/75, 1-HW/76, 1-HW/77, 1-HW/78, 1-HW/79, 1-HW/80, 1-HW/81, 1-HW/82, 1-HW/83, 1-HW/84, 1-HW/85, 1-HW/86, 1-HW/87, 1-HW/88, 1-HW/89, 1-HW/90, 1-HW/91, 1-HW/92, 1-HW/93, 1-HW/94, 1-HW/95, 1-HW/96, 1-HW/97, 1-HW/98, 1-HW/99, 1-HW/100

NOTES:  
 1. THIS DRAWING SHALL BE READ IN CONJUNCTION WITH ANY OTHER DRAWINGS AND SPECIFICATIONS REFERRED TO HEREIN.  
 2. REFER TO DRAWING REFERENCE NO. 382902/B/TEN/00001 FOR GENERAL NOTES, LEGEND AND ABBREVIATIONS.

REV. NO.	DATE	DESCRIPTION OF REVISION	ISSUE FOR TENDER	DATE	BY	CHKD	APPD
A	04/13		HL	TL	KIL	WES	

REVISING	DATE	DESCRIPTION OF REVISION	ISSUE FOR TENDER	DATE	BY	CHKD	APPD
DESIGNED	04/13		HL	TL	KIL	WES	
CHECKED	04/13		SZ	TL	KIL	WES	
VERIFIED	04/13		TL	TL	KIL	WES	
APPROVED	04/13		KIL	TL	KIL	WES	

合同編號	1/WS/13
合約編號	CE S2/2009 (WS)
合約名稱	IMPROVEMENT OF FRESH WATER SUPPLY TO CHEUNG CHAU

圖則名稱  
 Drawing title  
 PORTION OF WORKS - CHEUNG CHAU, ADAMSTA CHANNEL, LANTAU ISLAND (KEY PLAN)

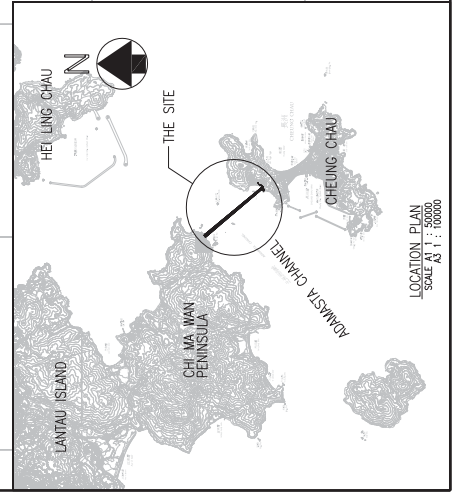
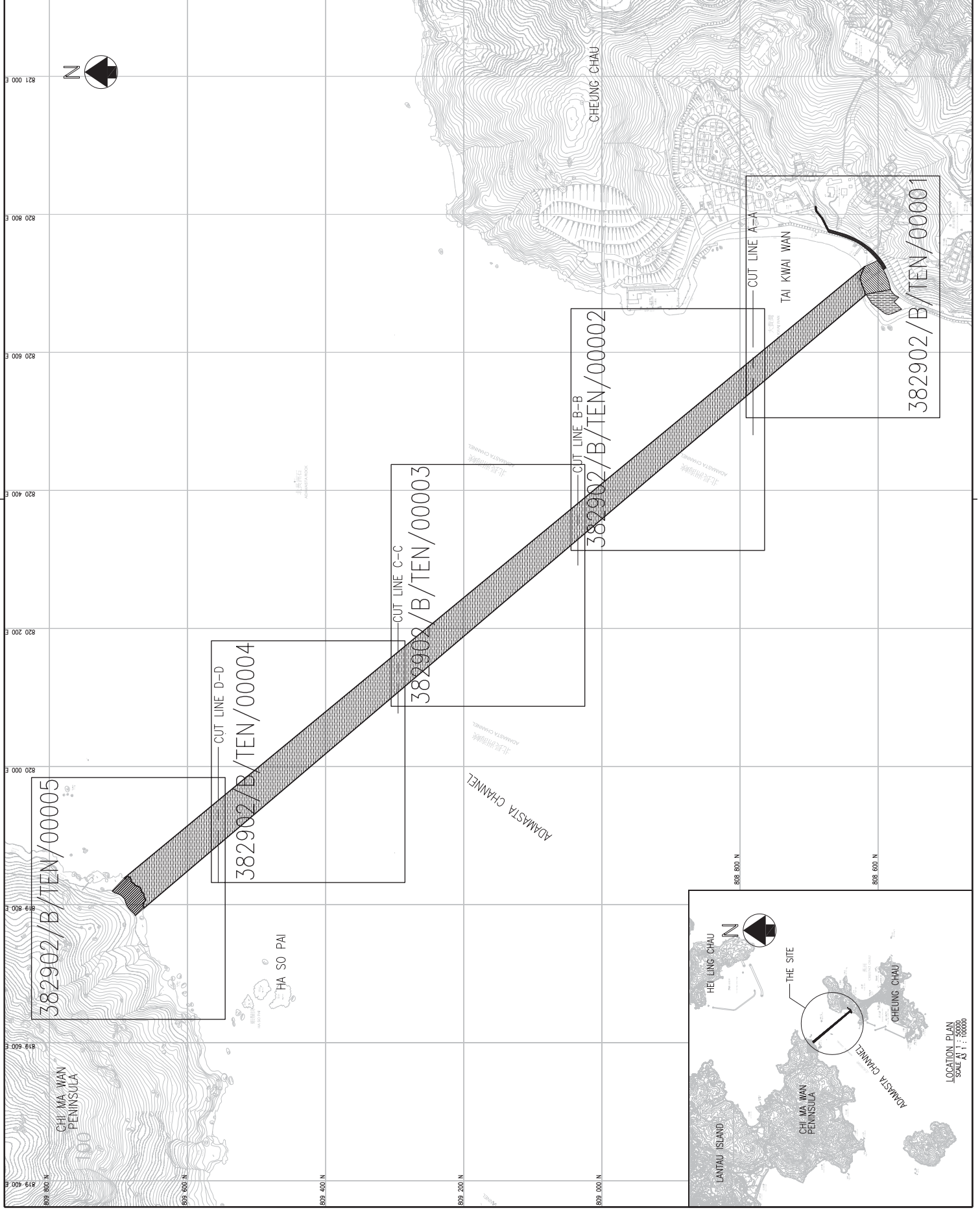
圖則編號  
 Drawing Reference No. 382902/B/TEN/00001K

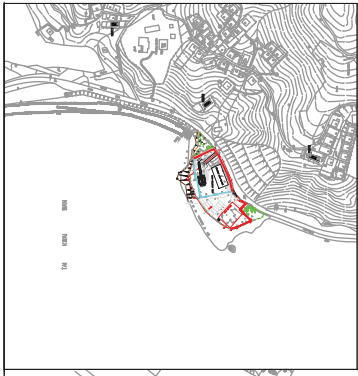
合約圖則編號  
 Contract Drawing No.

比例  
 Scale A1 1:2500 A3 1:5000

水務署  
 Water Supplies Department

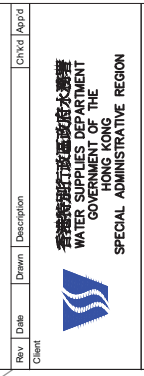
BLACK & VEATCH HONG KONG LIMITED  
 博威工程顧問有限公司





Given co-ordinates refer to Marine Department Notice No.169 of 2014

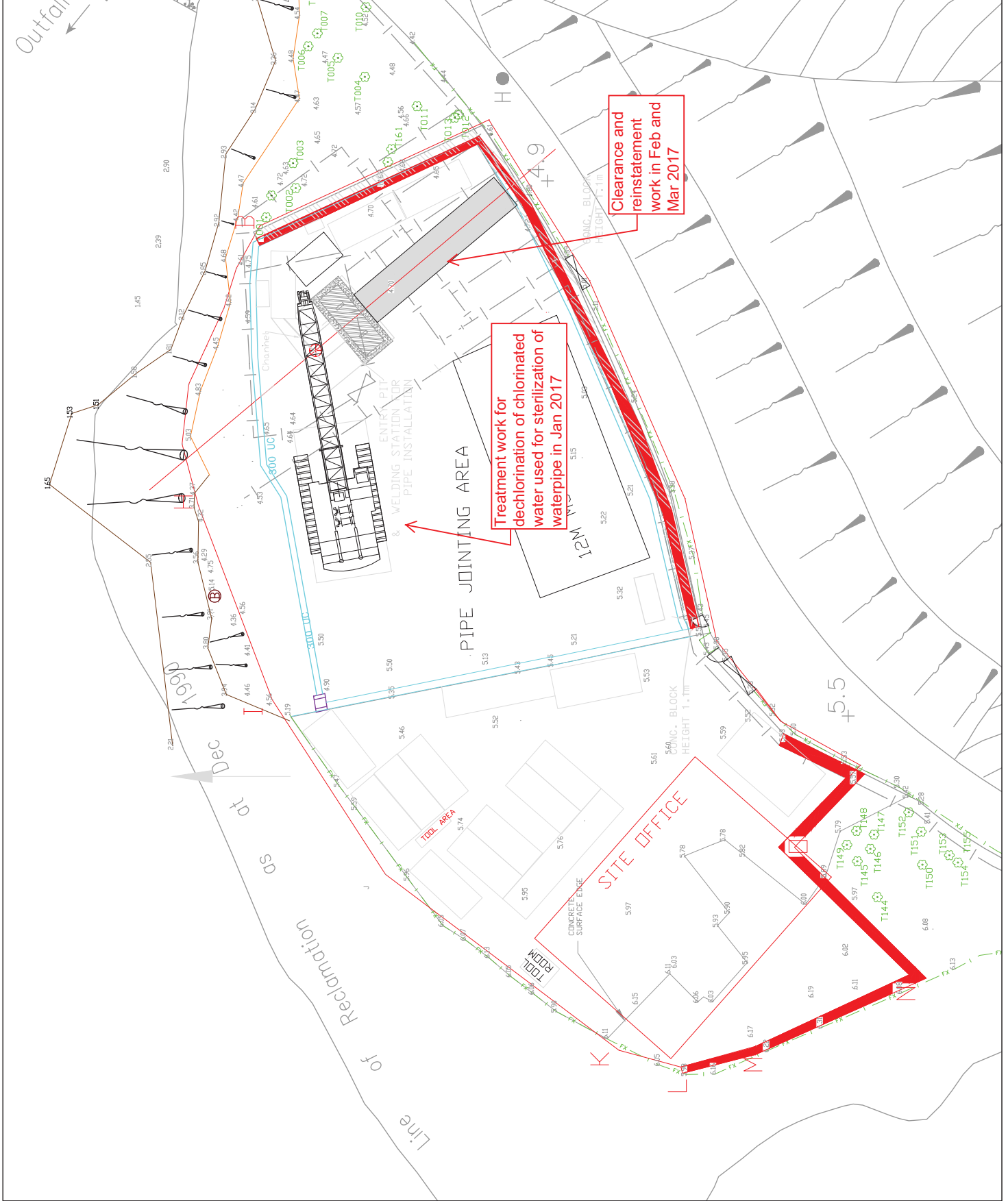
Rev	Date	Drawn	Description	Checked	Approved



Project  
**CONTRACT NO. 1/WS/D/13**  
**IMPROVEMENT OF FRESH WATER SUPPLY TO CHEUNG CHAU**

Title  
**Layout Plan of Works Area at Tai Kwai Wan**

Drawing Number **1/WS/D/13/SK051-3**  
 Scale at A3  
 Status





Key to symbols:

Rev	Date	Drawn	Description	Chk'd	App'd

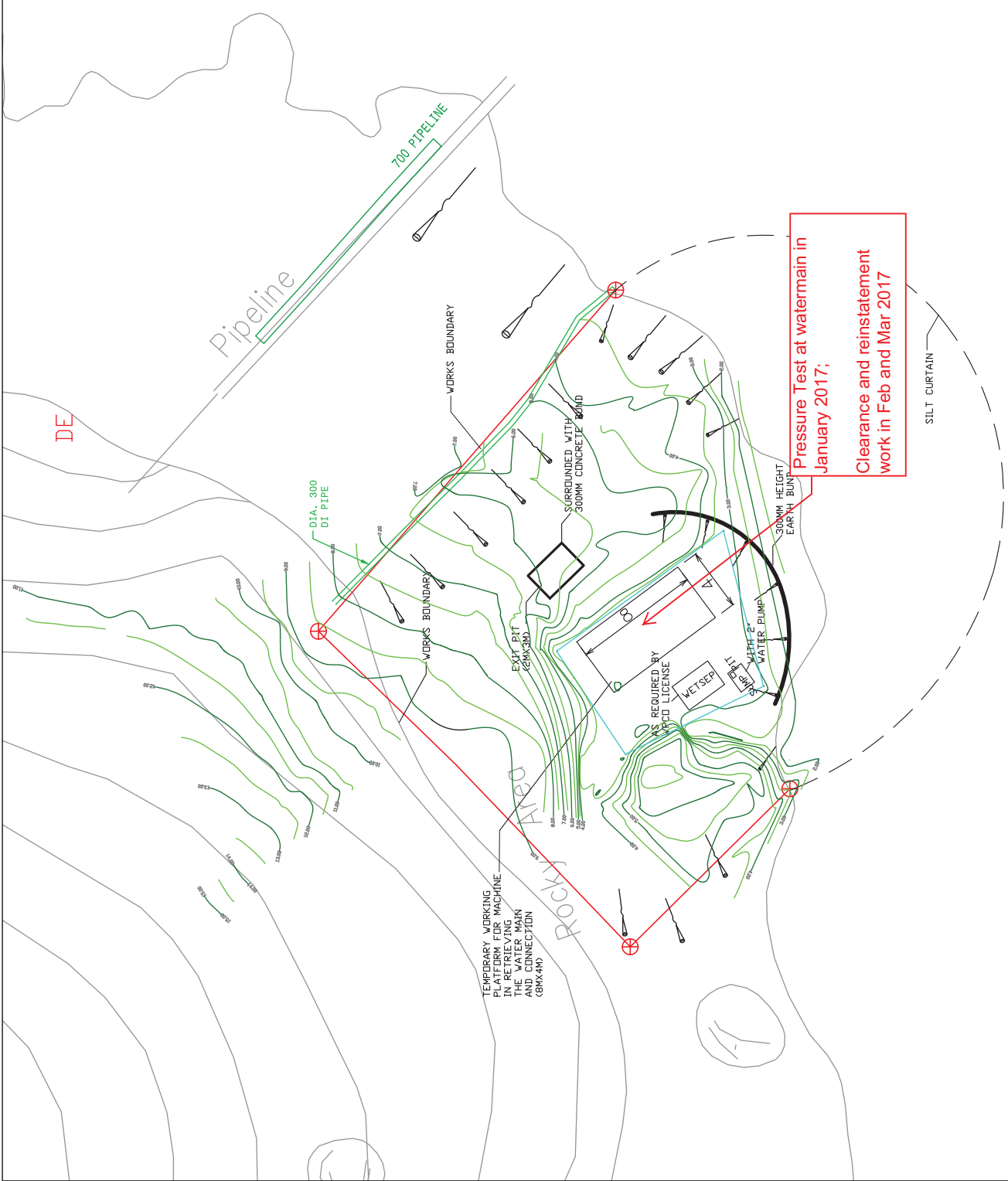
香港特別行政區政府水務署  
 WATER SUPPLIES DEPARTMENT  
 GOVERNMENT OF THE  
 HONG KONG  
 SPECIAL ADMINISTRATIVE REGION

Main Contractor  
 中國路橋  
 CRBC  
 CHINA ROAD & BRIDGE CONSTRUCTION CORPORATION  
 China Road-China Pipeline Joint Venture

Project  
 CONTRACT NO. 1/WSD/13  
 IMPROVEMENT OF FRESH WATER  
 SUPPLY TO CHEUNG CHAU

Title  
 UPDATED DRAINAGE PLAN AND  
 SITE LAYOUT AT HA SO PAI

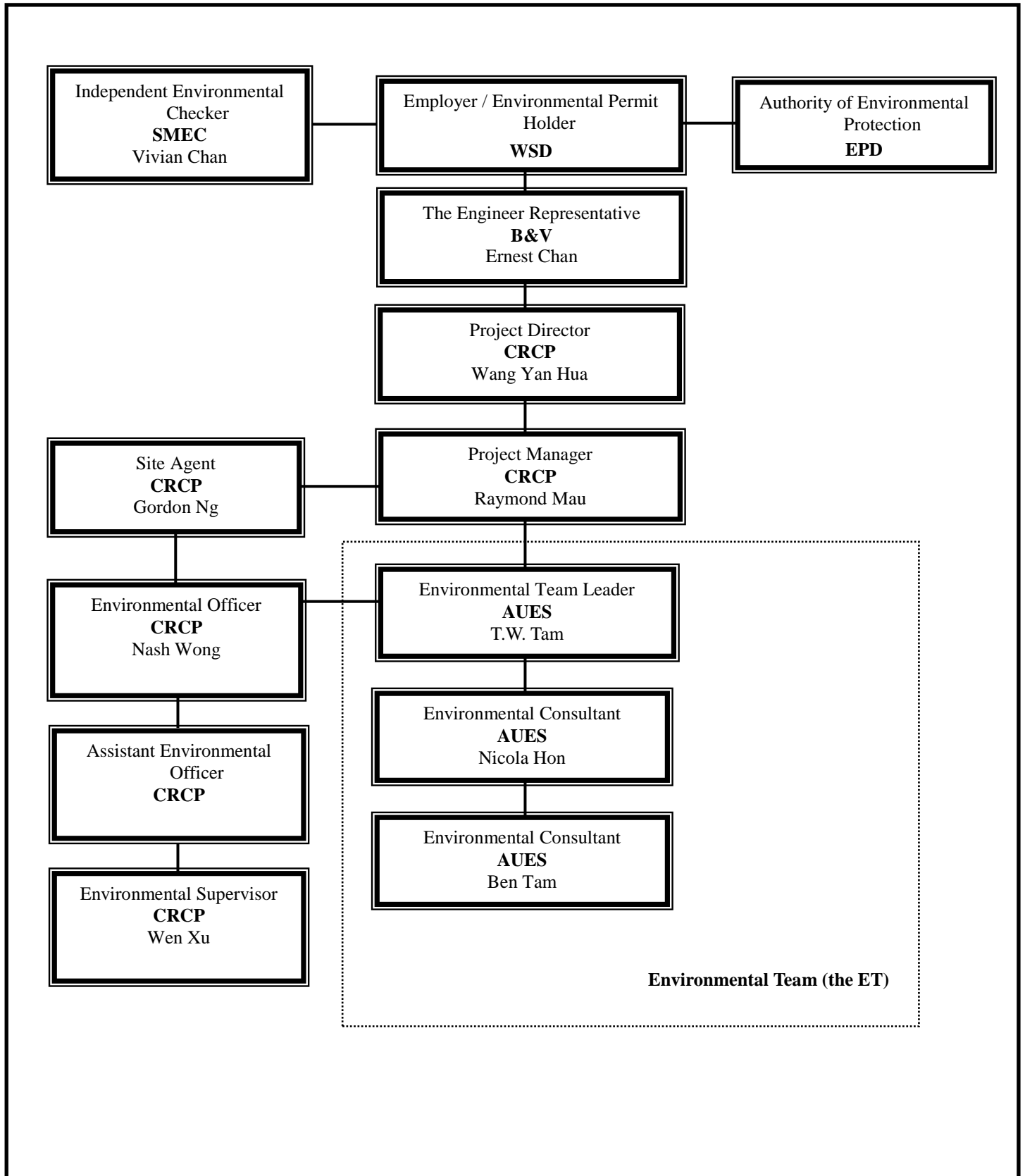
Drawing Number  
 1/WSD/13/SK044  
 Scale at A3  
 1:150  
 Date: 24/08/2015



Pressure Test at watermain in  
 January 2017;  
 Clearance and reinstatement  
 work in Feb and Mar 2017

## **Appendix B**

### **Organization Structure and Contact Details of Relevant Parties**



**Environmental Management Organization**

**Contact Details of Key Personnel**

<b>Organization</b>	<b>Project Role</b>	<b>Name of Key Staff</b>	<b>Tel No.</b>	<b>Fax No.</b>
B&V	Engineer's Representative	Ernest Chan	2981 1149	3485 4114
SMEC	Independent Environmental Checker	Vivian Chan	3995 8120	3995 8101
CRCP	Project Director	Wang Yan Hua	2981 1686	2981 1689
CRCP	Site Agent	Gordon Ng	2981 1686	2981 1689
CRCP	Environmental Officer	Nash Wong	2981 1686	2981 1689
CRCP	Environmental Supervisor	Wen Xu	2981 1686	2981 1689
AUES	Environmental Team Leader	T. W. Tam	2959 6059	2959 6079
AUES	Environmental Consultant	Nicola Hon	2959 6059	2959 6079
AUES	Environmental Consultant	Ben Tam	2959 6059	2959 6079
AUES	Assistant Environmental Consultant	Martin Li	2959 6059	2959 6079

**General Enquiries Hotline: 56958167**

Legend:

*WSD (Employer) – Water Supplies Department*

*B&V (Engineer) – Black & Veatch Hong Kong Limited*

*CRCP (Main Contractor) – China Road – China Pipeline JV*

*SMEC (IEC) – SMEC Asia Limited*

*AUES (ET) – Action-United Environmental Services & Consulting*

## **Appendix C**

### **Master and Three Months Rolling Construction Programs**



Activity ID	Description	Calendar	Early Start	Late Start	Original Duration	Early Finish	Late Finish	Total Float	TRA																															
<table border="1"> <tr> <td>2013</td><td>2014</td><td>2015</td><td>2016</td><td>2017</td> </tr> <tr> <td>J</td><td>F</td><td>M</td><td>A</td><td>M</td><td>J</td><td>J</td><td>A</td><td>S</td><td>O</td><td>N</td><td>D</td><td>J</td><td>F</td><td>M</td><td>A</td><td>M</td><td>J</td><td>J</td><td>A</td><td>S</td><td>O</td><td>N</td><td>D</td><td>J</td><td>F</td> </tr> </table>										2013	2014	2015	2016	2017	J	F	M	A	M	J	J	A	S	O	N	D	J	F	M	A	M	J	J	A	S	O	N	D	J	F
2013	2014	2015	2016	2017																																				
J	F	M	A	M	J	J	A	S	O	N	D	J	F	M	A	M	J	J	A	S	O	N	D	J	F															

Contract Dates									
KDC000200	Section 1 of the Works Completion Date	Cal_1			0	23OCT15 A	23OCT15 A	0d	
KDC000300	Section 2 of the Works Completion Date	Cal_1			0	23OCT16 A	23OCT16 A	0d	

Planned Completion Dates									
KDP000100	Planned Section 1 of the Works Completion Date	Cal_1			0	31JAN17 *	23OCT16	-100d	
KDP000200	Planned Section 2 of the Works Completion Date	Cal_1			0	28FEB17 *	23OCT16	-128d	
KDP000300	Proposed CE Time Implication (EOT) 250 Days	Cal_1			0	30DEC16	29JUN16 *	-184d	

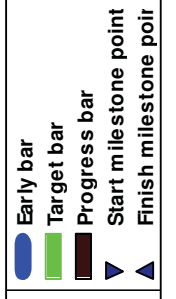
Access Dates									
KDA000100	Portion A Access Date	Cal_1	24OCT13 A	24OCT13 A	0			0d	
KDA000200	Portion B Access Date	Cal_1	24OCT13 A	24OCT13 A	0			0d	
KDA000300	Portion C Access Date	Cal_1	24OCT13 A	24OCT13 A	0			0d	
KDA000400	Portion D Access Date	Cal_1	24OCT13 A	24OCT13 A	0			0d	
KDA000500	Portion E Access Date	Cal_1	24OCT13 A	24OCT13 A	0			0d	
KDA000600	Portion F Access Date	Cal_1	24OCT13 A	24OCT13 A	0			0d	
KDA000700	Portion G Access Date	Cal_1	24OCT13 A	24OCT13 A	0			0d	

Change of Works Information									
CW00100	Recd realignment of submarine pipeline profile	Cal_1	10APR14 A	10APR14 A	0			0d	
CW00200	Adv info- realignment of landmain (Portion F&G)	Cal_1	20MAY14 A	20MAY14 A	0			0d	

General Provisions									
GEP000300	Temp accomm for PM, Supervisor & Contractor	Cal_1	24OCT13 A	24OCT13 A	1095	28FEB17	23OCT16	-128d	0d
GEP000400	Computer facilities for PM & Supervisor	Cal_1	24OCT13 A	24OCT13 A	1095	28FEB17	23OCT16	-128d	0d
GEP000500	Marine transport for PM & Supervisor	Cal_1	24OCT13 A	24OCT13 A	1095	28FEB17	23OCT16	-128d	0d
GEP000600	Site staff/hot/temp facilities/site clean	Cal_1	24OCT13 A	24OCT13 A	1095	28FEB17	23OCT16	-128d	0d
GEP000700	Provision of uniform	Cal_1	28FEB14 A	28FEB14 A	1095	28FEB17	23OCT16	-128d	0d

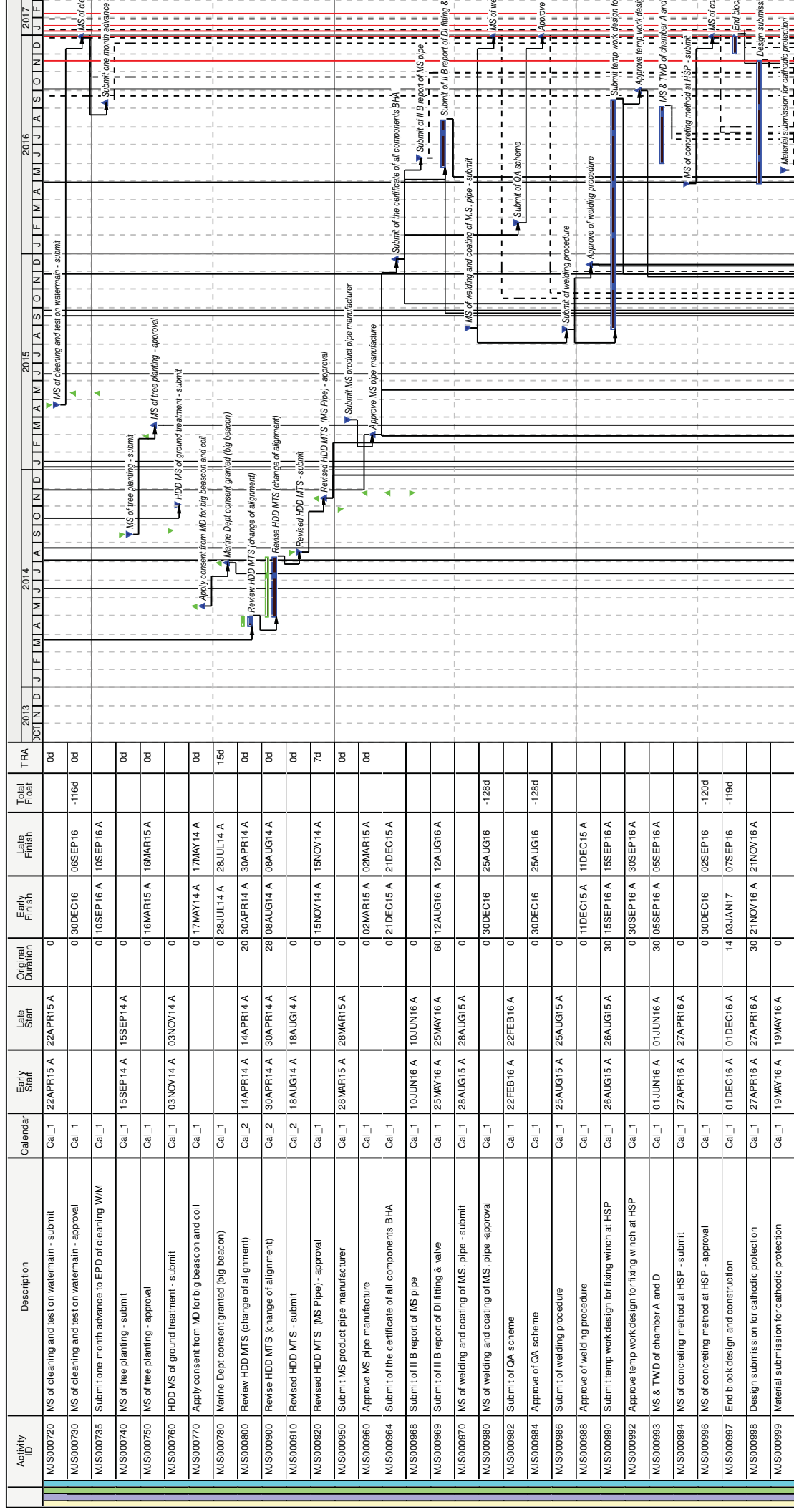
General Submissions									
GES000100	Initial survey and report	Cal_1	20FEB14 A	20FEB14 A	0	29JAN14 A	29JAN14 A	0d	
GES000200	Establish T.M.G	Cal_1	20FEB14 A	20FEB14 A	0			0d	

<b>Start date</b>	<b>23OCT13</b>	<b>CRBC-CPP JV</b> Progress Update <Based on Rev P; file A086>
<b>Finish date</b>	<b>28FEB17</b>	
<b>Data date</b>	<b>31DEC16</b>	
<b>Run date</b>	<b>05JAN17</b>	
<b>Page number</b>	<b>1A</b>	
<b>c Primavera Systems, Inc.</b>		



File: A088





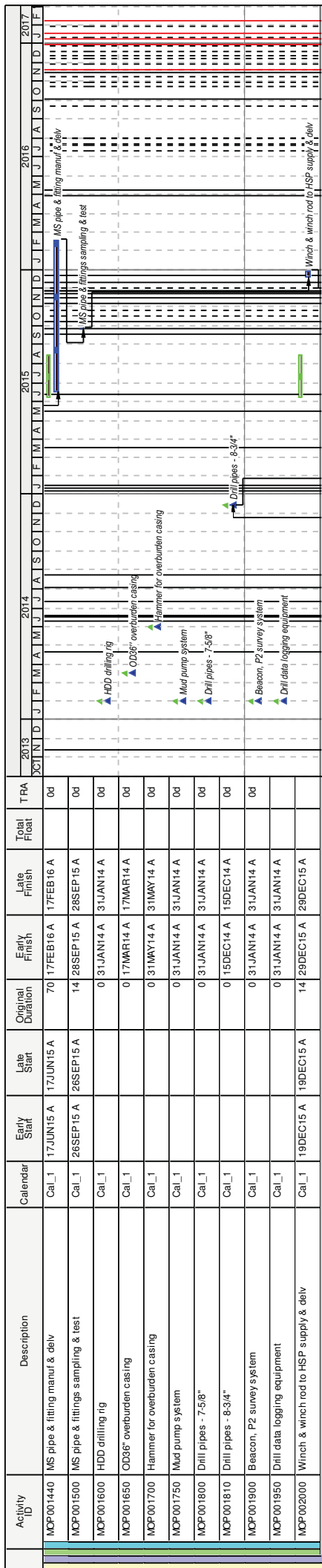
Activity ID	Description	Calendar	Early Start	Late Start	Original Duration	Early Finish	Late Finish	Total Float	T RA
MJS000720	MS of cleaning and test on watermain - submit	Cal_1	22APR15 A	22APR15 A	0			0d	
MJS000730	MS of cleaning and test on watermain - approval	Cal_1			0	30DEC16	06SEP16	-116d	0d
MJS000735	Submit one month advance to EPD of cleaning W/M	Cal_1			0	10SEP16 A	10SEP16 A		
MJS000740	MS of free planting - submit	Cal_1	15SEP14 A	15SEP14 A	0			0d	
MJS000750	MS of free planting - approval	Cal_1			0	16MAR15 A	16MAR15 A	0d	
MJS000760	HDD MS of ground treatment - submit	Cal_1	03NOV14 A	03NOV14 A	0			0d	
MJS000770	Apply consent from MD for big beaconn and coil	Cal_1			0	17MAY14 A	17MAY14 A	0d	
MJS000780	Marine Dept consent granted (big beaconn)	Cal_1			0	28JUL14 A	28JUL14 A	15d	
MJS000800	Review HDD MTS (change of alignment)	Cal_2	14APR14 A	14APR14 A	20	30APR14 A	30APR14 A	0d	
MJS000900	Revise HDD MTS (change of alignment)	Cal_2	30APR14 A	30APR14 A	28	09AUG14 A	08AUG14 A	0d	
MJS000910	Revised HDD MTS - submit	Cal_2	18AUG14 A	18AUG14 A	0			0d	
MJS000920	Revised HDD MTS (MS Pipe) - approval	Cal_1			0	15NOV14 A	15NOV14 A	7d	
MJS000950	Submit MS product pipe manufacturer	Cal_1	28MAR15 A	28MAR15 A	0			0d	
MJS000960	Approve MS pipe manufacture	Cal_1			0	02MAR15 A	02MAR15 A	0d	
MJS000964	Submit of the certificate of all components BHA	Cal_1			0	21DEC15 A	21DEC15 A		
MJS000968	Submit of I/B report of MS pipe	Cal_1	10JUN16 A	10JUN16 A	0				
MJS000969	Submit of I/B report of DI fitting & valve	Cal_1	25MAY16 A	25MAY16 A	60	12AUG16 A	12AUG16 A		
MJS000970	MS of welding and coating of IMS pipe - submit	Cal_1	28AUG15 A	28AUG15 A	0				
MJS000980	MS of welding and coating of IMS pipe - approval	Cal_1			0	30DEC16	25AUG16	-128d	
MJS000982	Submit of QA scheme	Cal_1	22FEB16 A	22FEB16 A	0				
MJS000984	Approve of QA scheme	Cal_1			0	30DEC16	25AUG16	-128d	
MJS000986	Submit of welding procedure	Cal_1	25AUG15 A	25AUG15 A	0				
MJS000988	Approve of welding procedure	Cal_1			0	11DEC15 A	11DEC15 A		
MJS000990	Submit temp work design for fixing winch at HSP	Cal_1	26AUG15 A	26AUG15 A	30	15SEP16 A	15SEP16 A		
MJS000992	Approve temp work design for fixing winch at HSP	Cal_1			0	30SEP16 A	30SEP16 A		
MJS000993	MS & TWD of chamber A and D	Cal_1	01JUN16 A	01JUN16 A	30	05SEP16 A	06SEP16 A		
MJS000994	MS of concreting method at HSP - submit	Cal_1	27APR16 A	27APR16 A	0				
MJS000996	MS of concreting method at HSP - approval	Cal_1			0	30DEC16	02SEP16	-120d	
MJS000997	End block design and construction	Cal_1	01DEC16 A	01DEC16 A	14	03JAN17	07SEP16	-119d	
MJS000998	Design submission for cathodic protection	Cal_1	27APR16 A	27APR16 A	30	21NOV16 A	21NOV16 A		
MJS000999	Material submission for cathodic protection	Cal_1	19MAY16 A	19MAY16 A	0				

**Major Subletting**

MSL000100	Environmental Team Leader Services - approval	Cal_1			0	04DEC13 A	04DEC13 A	0d	
MSL000200	Traffic engg consultancy - approval	Cal_1			0	05DEC13 A	05DEC13 A	0d	
MSL000300	Indep checking engineer services - approval	Cal_1			0	05DEC13 A	05DEC13 A	0d	

<b>Start date</b>	<b>23OCT13</b>	<b>CRBC-CPP JV</b> Progress Update <Based on Rev P; file A086>	File: A088 Start milestone point Finish milestone point
<b>Finish date</b>	<b>28FEB17</b>		
<b>Data date</b>	<b>31DEC16</b>		
<b>Run date</b>	<b>05JAN17</b>		
<b>Page number</b>	<b>3A</b>		
<b>c Primavera Systems, Inc.</b>			





Activity ID	Description	Calendar	Early Start	Late Start	Original Duration	Early Finish	Late Finish	Total Float	T.R.A
MCP001440	MS pipe & fittings manur & delv	Cal_1	17JUN15 A	17JUN15 A	70	17FEB16 A	17FEB16 A	0d	
MCP001500	MS pipe & fittings sampling & test	Cal_1	26SEP15 A	26SEP15 A	14	28SEP15 A	28SEP15 A	0d	
MCP001600	HDD drilling rig	Cal_1			0	31JAN14 A	31JAN14 A	0d	
MCP001650	OD36" overburden casing	Cal_1			0	17MAR14 A	17MAR14 A	0d	
MCP001700	Hammer for overburden casing	Cal_1			0	31MAY14 A	31MAY14 A	0d	
MCP001750	Mtd pump system	Cal_1			0	31JAN14 A	31JAN14 A	0d	
MCP001800	Drill pipes - 7-5/8"	Cal_1			0	31JAN14 A	31JAN14 A	0d	
MCP001810	Drill pipes - 8-3/4"	Cal_1			0	15DEC14 A	15DEC14 A	0d	
MCP001900	Beacon, P2 survey system	Cal_1			0	31JAN14 A	31JAN14 A	0d	
MCP001950	Drill data logging equipment	Cal_1			0	31JAN14 A	31JAN14 A	0d	
MCP002000	Winch & winch rod to HSP supply & delv	Cal_1	19DEC15 A	19DEC15 A	14	29DEC15 A	29DEC15 A	0d	

**General Safety & Environmental Provisions**

SSE000100	Implement safety provisions (SSEMC end of @ mth)	Cal_1	24OCT13 A	24OCT13 A	1096	28FEB17	23OCT16	-126d	0d
SSE000200	Implement emirc provisions (SSEMC end of @ mth)	Cal_1	24OCT13 A	24OCT13 A	1096	28FEB17	23OCT16	-126d	0d

**Sec 1 Portion A & B Site Preparation**

SE1000100	Portion A & B Site clearance	Cal_2	24OCT13 A	24OCT13 A	10	01NOV13 A	01NOV13 A	0d	
SE1000200	Erect site office c/w furniture	Cal_2	31DEC13 A	31DEC13 A	30	29JAN14 A	29JAN14 A	0d	
SE1000300	Erect nose barrier panel	Cal_2	19FEB14 A	19FEB14 A	15	31MAR14 A	31MAR14 A	0d	
SE1000400	Perimeter channel & sediment tank	Cal_2	03DEC13 A	03DEC13 A	15	15JAN14 A	15JAN14 A	0d	
SE1000500	Hard pave 'Dir' area w/lean conc	Cal_2	11FEB14 A	11FEB14 A	15	04JUL14 A	04JUL14 A	0d	
SE1000600	U/G utility detection to Portion A/B/F/G	Cal_2	03DEC13 A	03DEC13 A	7	15JAN14 A	15JAN14 A	0d	

**Sec 1 Portion D Site Preparation**

SE1100100	Portion D site clearance	Cal_2	31DEC14 A	31DEC14 A	5	06JAN15 A	06JAN15 A	0d	
SE1100150	Preparation formation level	Cal_2	14NOV14 A	14NOV14 A	20	23DEC14 A	23DEC14 A	0d	
SE1100400	Erect silt curtain	Cal_2	12MAY14 A	12MAY14 A	10	22MAY14 A	22MAY14 A	0d	
SE1100600	Land steps construction	Cal_2	28JAN15 A	28JAN15 A	45	30JAN15 A	30JAN15 A	0d	
SE1100650	Form temp exit pit (Trench)	Cal_2	14JUL15 A	14JUL15 A	90	08DEC15 A	08DEC15 A	0d	
SE1100700	Excavation of Ext Pit (Modification)	Cal_2	23NOV15 A	23NOV15 A	18	08DEC15 A	08DEC15 A	0d	
SE1100750	Excavation for holding area of winch at HSP	Cal_2	14JUL15 A	14JUL15 A	60	08DEC15 A	08DEC15 A	0d	
SE1100755	Minor excavation for winch adjustment at HSP	Cal_2	05JAN16 A	05JAN16 A	10	12JAN16 A	12JAN16 A	0d	
SE1100800	Temp works construction of winch at HSP	Cal_2	13JAN16 A	13JAN16 A	20	18FEB16 A	18FEB16 A	0d	

**Sec 1 Prep for HDD W orks**

SE1000610	Cast deadman anchor	Cal_2	15MAY14 A	15MAY14 A	12	27MAY14 A	27MAY14 A	0d	
SE1000620	Position rig and PPs	Cal_2	27MAY14 A	27MAY14 A	2	29MAY14 A	29MAY14 A	0d	

**Start date** 23OCT13

**Finish date** 28FEB17

**Data date** 31DEC16

**Run date** 05JAN17

**Page number** 5A

**c** Primavera Systems, Inc.

CRBC-CPP JV

Progress Update

<Based on RevP; file A086>

File: A088

Contract No: 1/WSD/13  
Improvement of Fresh Water Supply to Cheung ChauCRBC-CPP JV

**Early bar**

**Target bar**

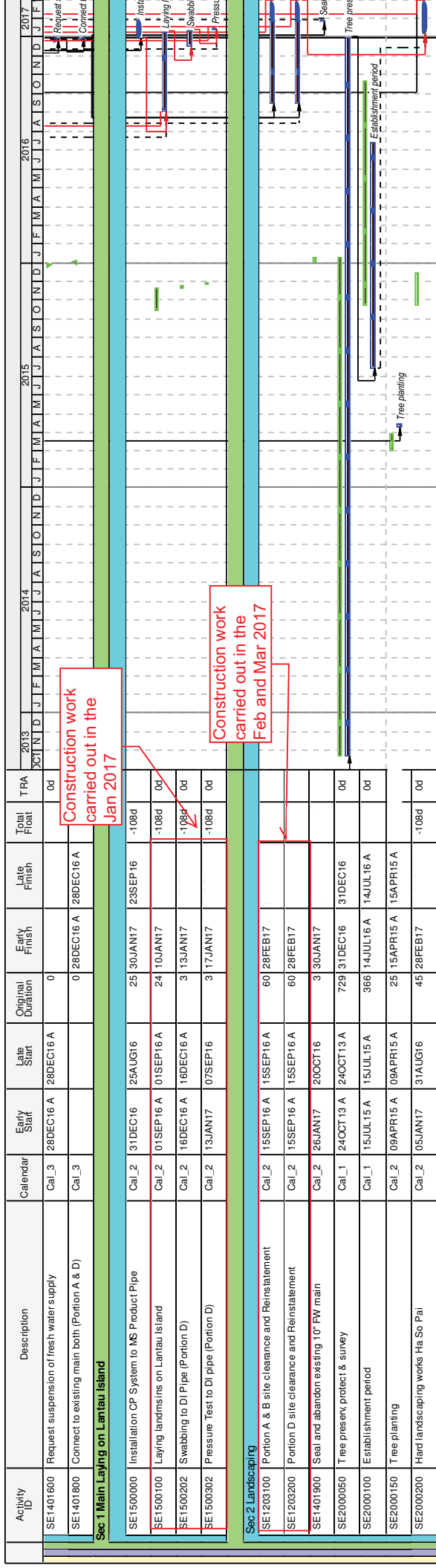
**Progress bar**

**Start milestone point**

**Finish milestone point**







Start date	23OCT13
Finish date	28FEB17
Data date	31DEC16
Run date	05JAN17
Page number	8A

Contract No. 1/WSD/13  
Improvement of Fresh Water Supply to Cheung Chau CRBC-CPP JV  
CRBC-CPP JV

CRBC-CPP JV  
Progress Update  
<Based on Rev.P; file A086>

■ Early bar  
■ Target bar  
■ Progress bar  
▲ Start milestone point  
▲ Finish milestone point

File: A088



## **Appendix D**

### **Monitoring Locations Designated in the EM&A Manual**

**NOTE:**  
1. THE FINAL LOCATIONS OF THE MONITORING STATIONS SHALL BE PROPOSED BY THE ENVIRONMENTAL PROTECTION DEPARTMENT AND APPROVED BY THE INDEPENDENT ENVIRONMENTAL CHECKER (IEC) BEFORE SUBMITTING TO EPD FOR APPROVAL PRIOR TO COMMENCEMENT OF ANY MONITORING.

**LEGEND:**  
— PROPOSED SUBMARINE FRESH WATER MAIN  
⊕ W1 WATER QUALITY MONITORING STATION  
⊕ W2 WATER QUALITY MONITORING STATION

Revision	Date	Description	Initial
		Drawn	Checked
		FD	SZ
		10/09	10/09
		10/09	10/09
		Approved	

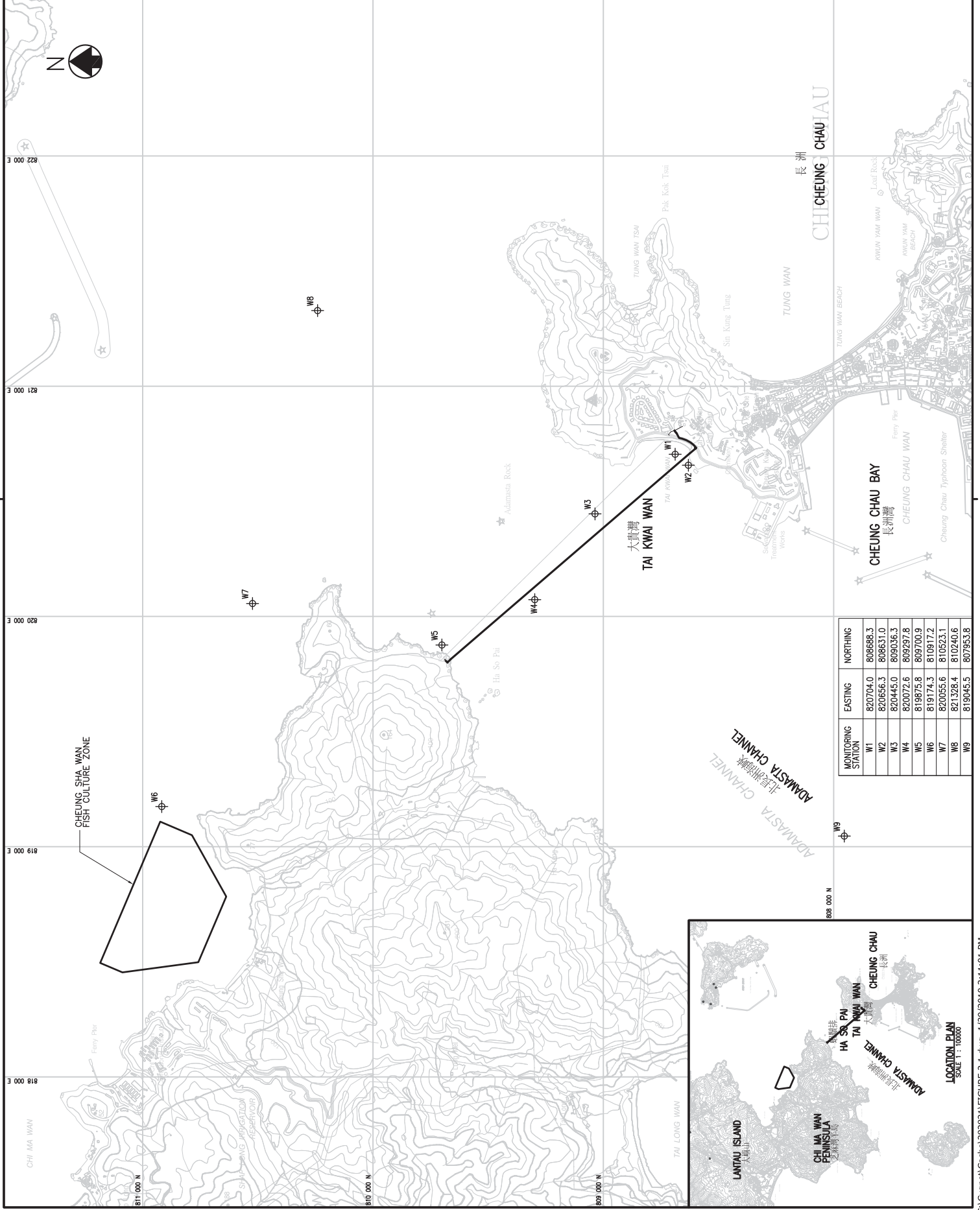
Agreement No. CE 1/2008 (WS)  
Agreement Title  
IMPROVEMENT OF FRESH WATER SUPPLY TO CHEUNG CHAU  
— INVESTIGATION

Drawing Title  
**LOCATIONS OF PROPOSED WATER QUALITY MONITORING STATIONS**

Drawing No. **FIGURE 2.1**  
Revision  
AS 1/15/000



BLACK & VEATCH HONG KONG LIMITED  
博達工程顧問有限公司



MONITORING STATION	EASTING	NORTHING
W1	820704.0	808688.3
W2	820656.3	808631.0
W3	820445.0	809036.3
W4	820072.6	809297.8
W5	819875.8	809700.9
W6	819174.3	810917.2
W7	820055.6	810523.1
W8	821328.4	810240.6
W9	819045.5	807953.8



© Copyright by Black & Veatch Hong Kong Limited

**LEGEND:**

- PROPOSED SUBMARINE FRESH WATER MAIN
- PROPOSED LAND-BASED FRESH WATER MAIN
- REPRESENTATIVE NOISE SENSITIVE RECEIVER
- PROPOSED LAUNCHING SITE AND WORKS YARD
- PROPOSED TEMPORARY NOISE BARRIER
- NOISE MONITORING STATION

NSR1, NSR2, NSR3, NSR4

N1

Revision	Date	Description	Initial
1	10/09	Design	Drwn
2	10/09	FD	SZ
3	10/09	W/S	W/S
4	10/09	Approved	10/09

Agreement No. CE 1/2008 (WS)

Agreement Title: IMPROVEMENT OF FRESH WATER SUPPLY TO CHEUNG CHAU - INVESTIGATION

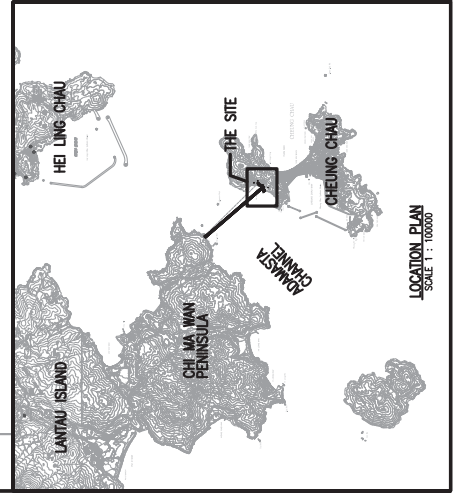
Drawing Title: LOCATIONS OF PROPOSED NOISE MONITORING STATION AND NOISE SENSITIVE RECEIVERS

Drawing No. AS 12000

Scale: AS 1:2000

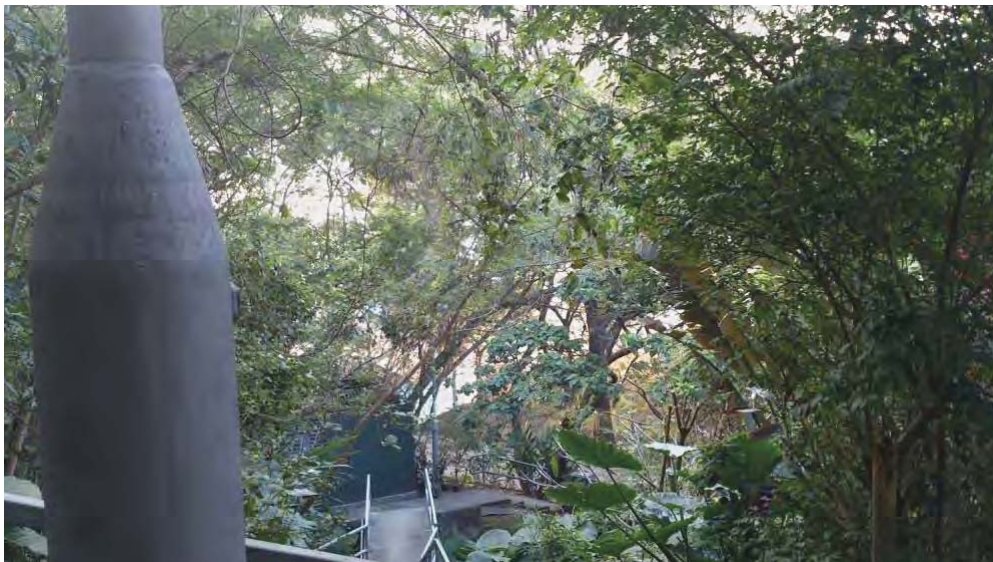
Water Supplies Department

BLACK & VEATCH HONG KONG LIMITED  
博達工程顧問有限公司





**Photo 1: View from the light pole (proposed N1a) to the NSR-N1.**



**Photo 2: View from the light pole (proposed N1a) to the construction site**

## **Appendix E**

### **Event and Action Plan**

Table 2.6 Event and Action Plan for Water Quality

Event	ET Leader	IEC	ER	Contractor
Action Level being exceeded by one sampling day	<ol style="list-style-type: none"> <li>Repeat in-site measurement to confirm findings.</li> <li>Identify source(s) of impact.</li> <li>Inform IEC and Contractor.</li> <li>Check monitoring data, all plant, equipment and Contractor's working methods.</li> <li>Discuss mitigation measures with IEC and Contractor.</li> <li>Repeat measurement on next day of exceedance.</li> </ol>	<ol style="list-style-type: none"> <li>Discuss with ET and Contractor on the mitigation measures.</li> <li>Review proposals on mitigation measures submitted by Contractor and advise the ER accordingly.</li> <li>Assess the effectiveness of the implemented mitigation measures.</li> </ol>	<ol style="list-style-type: none"> <li>Discuss with IEC on the proposed mitigation measures.</li> <li>Make agreement on the mitigation measures to be implemented.</li> <li>Assess effectiveness of the implemented mitigation measures.</li> </ol>	<ol style="list-style-type: none"> <li>Inform the ER and confirm notification of the non-compliance in writing.</li> <li>Rectify unacceptable practice.</li> <li>Check all plant and equipment.</li> <li>Consider changes of working methods.</li> <li>Discuss with ET and IEC and propose mitigation measures to IEC and ER.</li> <li>Implement the agreed mitigation measures.</li> </ol>
Action Level being exceeded by more than one consecutive sampling days	<ol style="list-style-type: none"> <li>Repeat in-situ measurement to confirm findings;</li> <li>Identify source(s) of impact.</li> <li>Inform IEC and Contractor.</li> <li>Check monitoring data, all plant, equipment and Contractor's working methods.</li> <li>Discuss mitigation measures with IEC and Contractor.</li> <li>Ensure mitigation measures are implemented.</li> <li>Prepare to increase the monitoring frequency to daily.</li> <li>Repeat measurement on next day of exceedance.</li> </ol>	<ol style="list-style-type: none"> <li>Discuss with ET and Contractor on the mitigation measures.</li> <li>Review proposals on mitigation measures submitted by Contractor and advise the ER accordingly.</li> <li>Assess the effectiveness of the implemented mitigation measures.</li> </ol>	<ol style="list-style-type: none"> <li>Discuss with IEC on the proposed mitigation measures.</li> <li>Make agreement on the mitigation measures to be implemented.</li> <li>Assess the effectiveness of the implemented mitigation measures.</li> </ol>	<ol style="list-style-type: none"> <li>Inform the ER and confirm notification of the non-compliance in writing.</li> <li>Rectify unacceptable practice.</li> <li>Check all plant and equipment.</li> <li>Consider changes of working methods.</li> <li>Discuss with ET and IEC and propose mitigation measures to IEC and ER within 3 working days.</li> <li>Implement the agreed mitigation measures.</li> </ol>
Limit Level being exceeded by one sampling day	<ol style="list-style-type: none"> <li>Repeat in-situ measurement to confirm findings.</li> <li>Identify source(s) of impact.</li> <li>Inform IEC, contractor, AFCD and EPD.</li> <li>Check monitoring data, all plant, equipment and Contractor's working methods.</li> <li>Discuss mitigation measures with IEC, ER and Contractor.</li> <li>Ensure mitigation measures are implemented;</li> <li>Increase the monitoring frequency to daily until no exceedance of Limit Level.</li> </ol>	<ol style="list-style-type: none"> <li>Discuss with IEC, ET and Contractor on the proposed mitigation measures.</li> <li>Request Contract to critically review the working methods.</li> <li>Make agreement on the mitigation measures to be implemented.</li> <li>Assess the effectiveness of the implemented mitigation measures.</li> </ol>	<ol style="list-style-type: none"> <li>Discuss with IEC, ET and Contractor on the proposed mitigation measures.</li> <li>Request Contract to critically review the working methods.</li> <li>Make agreement on the mitigation measures to be implemented.</li> <li>Assess the effectiveness of the implemented mitigation measures.</li> </ol>	<ol style="list-style-type: none"> <li>Inform the ER and confirm notification of the non-compliance in writing.</li> <li>Rectify unacceptable practice.</li> <li>Check all plant and equipment.</li> <li>Consider changes of working methods.</li> <li>Discuss with ET, IEC and ER and propose mitigation measures to IEC and ER within 3 working days.</li> <li>Implement the agreed mitigation measures.</li> </ol>

Event	ET Leader	IEC	ER	Contractor
Limit Level being exceeded by more than one consecutive sampling days	<ol style="list-style-type: none"> <li>1. Repeat in-situ measurement to confirm findings.</li> <li>2. Identify source(s) of impact.</li> <li>3. Inform IEC, contractor, AFCD and EPD.</li> <li>4. Check monitoring data, all plant, equipment and Contractor's working methods.</li> <li>5. Discuss mitigation measures with IEC, ER and Contractor.</li> <li>6. Ensure mitigation measures are implemented.</li> <li>7. Increase the monitoring frequency to daily until no exceedance of Limit Level for two consecutive days.</li> </ol>	<ol style="list-style-type: none"> <li>1. Discuss with ET and Contractor on the mitigation measures.</li> <li>2. Review proposals on mitigation measures submitted by Contractor and advise the ER accordingly.</li> <li>3. Assess the effectiveness of the implemented mitigation measures.</li> </ol>	<ol style="list-style-type: none"> <li>1. Discuss with IEC, ET and Contractor on the proposed mitigation measures.</li> <li>2. Request Contractor to critically review the working methods.</li> <li>3. Make agreement on the mitigation measures to be implemented.</li> <li>4. Assess the effectiveness of the implemented mitigation measures.</li> <li>5. Consider and instruct, if necessary, the Contractor to slow down or to stop all or part of the work until no exceedance of Limit Level.</li> </ol>	<ol style="list-style-type: none"> <li>1. Inform the ER and confirm notification of the non-compliance in writing.</li> <li>2. Rectify unacceptable practice.</li> <li>3. Check all plant and equipment.</li> <li>4. Consider changes of working methods.</li> <li>5. Discuss with ET, IEC and ER and propose mitigation measures to IEC and ER within 3 working days.</li> <li>6. Implement the agreed mitigation measures.</li> <li>7. As directed by the ER, to slow down or to stop all or part of the work or construction activities.</li> </ol>

Table 6.3 Event/Action Plan for Construction Noise Monitoring

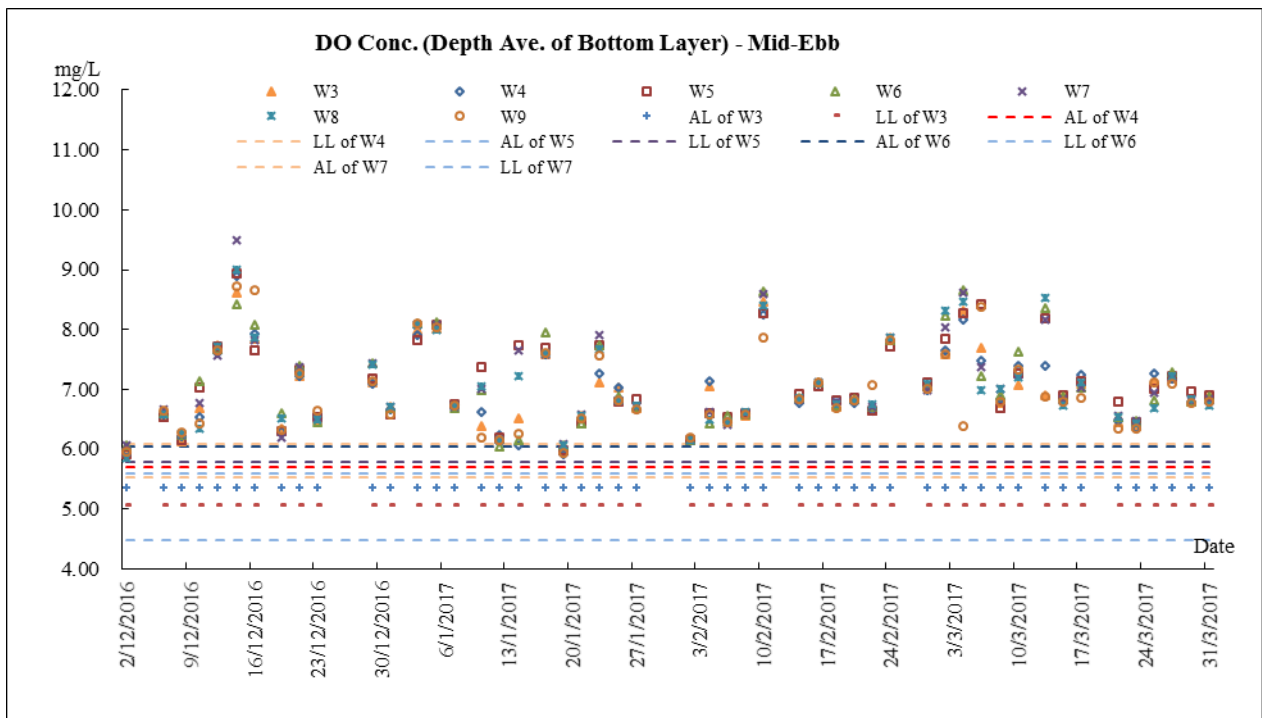
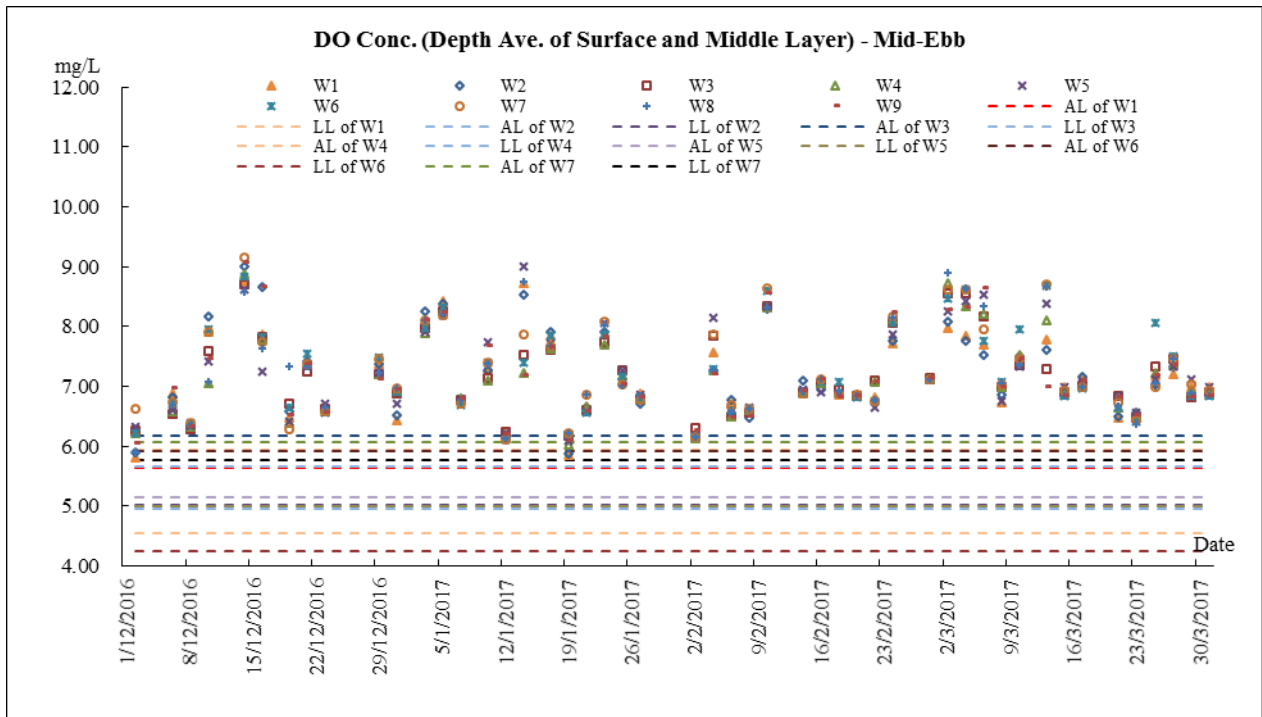
EVENT	ACTION			
	ET Leader	IEC	ER	Contractor
Action Level	<ol style="list-style-type: none"> <li>1. Notify IEC, Contractor and ER</li> <li>2. Carry out investigation and identify source</li> <li>3. Report the results of investigation to the IEC, Contractor and ER</li> <li>4. Discuss with the Contractor and formulate remedial measures</li> <li>5. Increase monitoring frequency</li> <li>6. Check compliance to Action/Limit Levels after application of mitigation measures</li> </ol>	<ol style="list-style-type: none"> <li>1. Review the analysed results submitted by the ET Leader</li> <li>2. Review the proposed remedial measures by the Contractor and advise the ER &amp; ET accordingly</li> <li>3. Supervise the implementation of remedial measures</li> </ol>	<ol style="list-style-type: none"> <li>1. Confirm receipt of notification of complaint in writing</li> <li>2. Notify Contractor</li> <li>3. Check monitoring data submitted by the ET</li> <li>4. Require Contractor to propose remedial measures for the analysed noise problem</li> <li>5. Ensure remedial measures are properly implemented</li> </ol>	<ol style="list-style-type: none"> <li>1. Submit noise mitigation proposals to ER and IEC within three working days of notification</li> <li>2. Liaise with the ER to ensure the effectiveness of the agreed mitigation</li> <li>3. Amend proposal if required</li> <li>4. Implement noise mitigation proposals</li> </ol>
Limit Level	<ol style="list-style-type: none"> <li>1. Notify IEC, ER, EPD and Contractor</li> <li>2. Identify Source</li> <li>3. Repeat measurement to confirm findings</li> <li>4. Increase monitoring frequency</li> <li>5. Carry out analysis of Contractor's working procedures to determine possible mitigation to be implemented</li> <li>6. Inform IEC, ER and EPD the causes &amp; actions taken for the exceedances</li> <li>7. Assess effectiveness of Contractor's remedial actions and keep IEC, EPD and ER informed of the results</li> <li>8. If exceedance stops, cease additional monitoring</li> </ol>	<ol style="list-style-type: none"> <li>1. Check monitoring data submitted by ET</li> <li>2. Discuss amongst ER, ET Leader and Contractor on the potential remedial actions</li> <li>3. Review Contractor's remedial actions whenever necessary to assure their effectiveness and advise the ER &amp; ET accordingly</li> <li>4. Supervise the implementation of remedial measures</li> </ol>	<ol style="list-style-type: none"> <li>1. Confirm receipt of notification of exceedance</li> <li>2. Notify Contractor</li> <li>3. Check monitoring data submitted by the ET</li> <li>4. Require Contractor to propose remedial measures for the analysed noise problem</li> <li>5. Discuss with ET, IEC and Contractor on proposed remedial actions to be implemented</li> <li>6. Ensure remedial measures are properly implemented</li> <li>7. Assess the effectiveness of the remedial actions and keep the Contractor informed</li> <li>8. If exceedance continues, consider what portion of the work is responsible and instruct the Contractor to stop that portion of work until the exceedance is abated</li> </ol>	<ol style="list-style-type: none"> <li>1. Take immediate action to avoid further exceedance</li> <li>2. Submit proposals for remedial actions to ER within 3 working days of notification</li> <li>3. Liaise with the ER to ensure the effectiveness of the agreed mitigation</li> <li>4. Amend proposal if required</li> <li>5. Implement the agreed proposals</li> <li>6. Resubmit proposals if problem still not under control</li> <li>7. Stop the relevant portion of works as determined by the ER until the exceedance is abated</li> </ol>

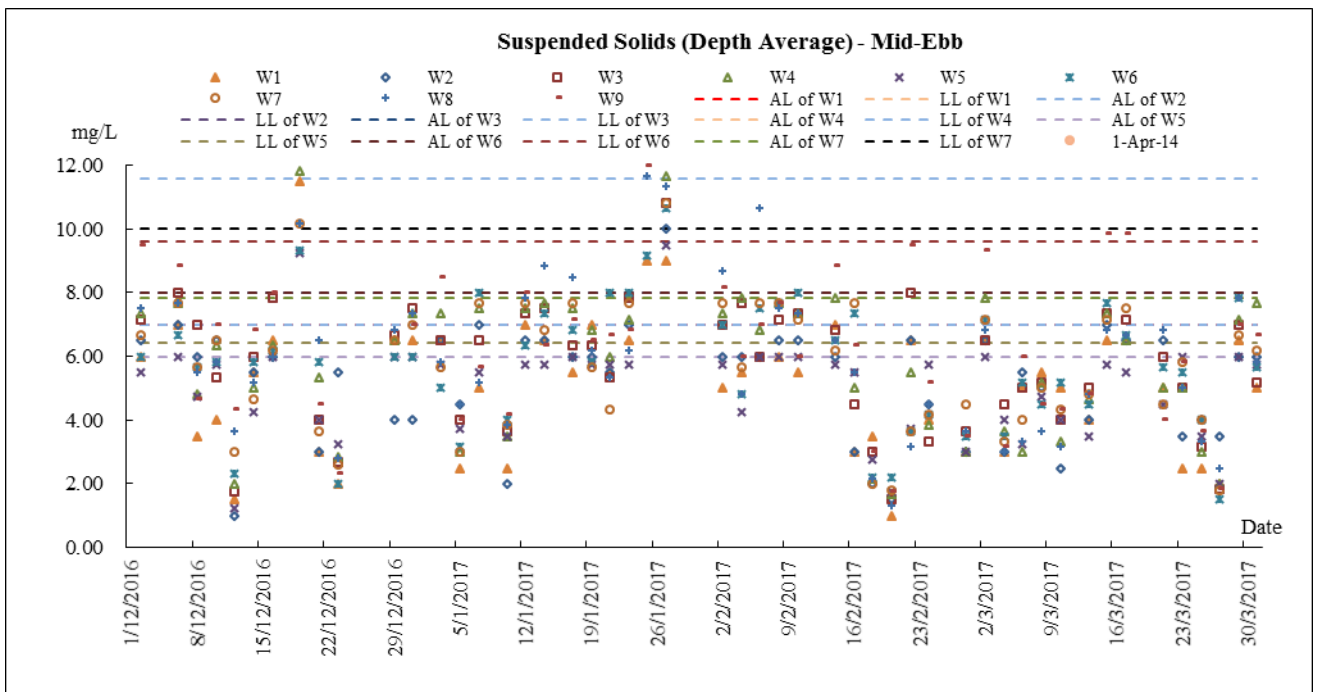
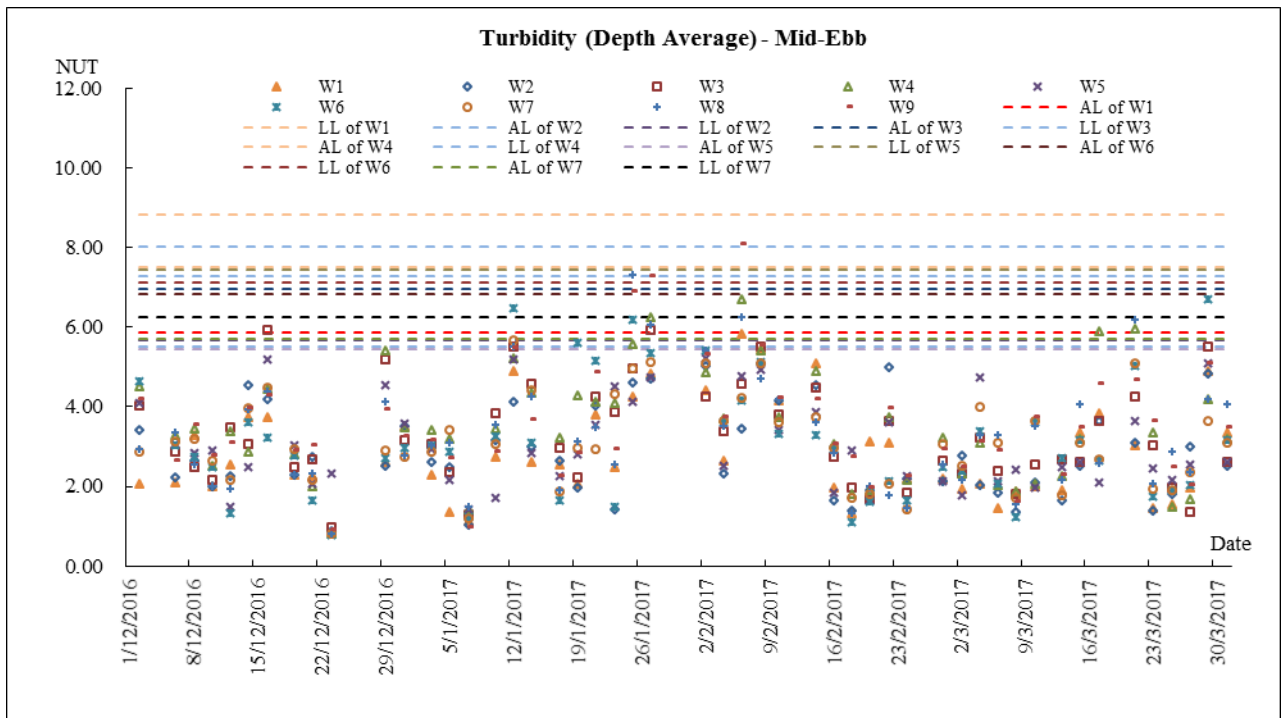


## **Appendix F**

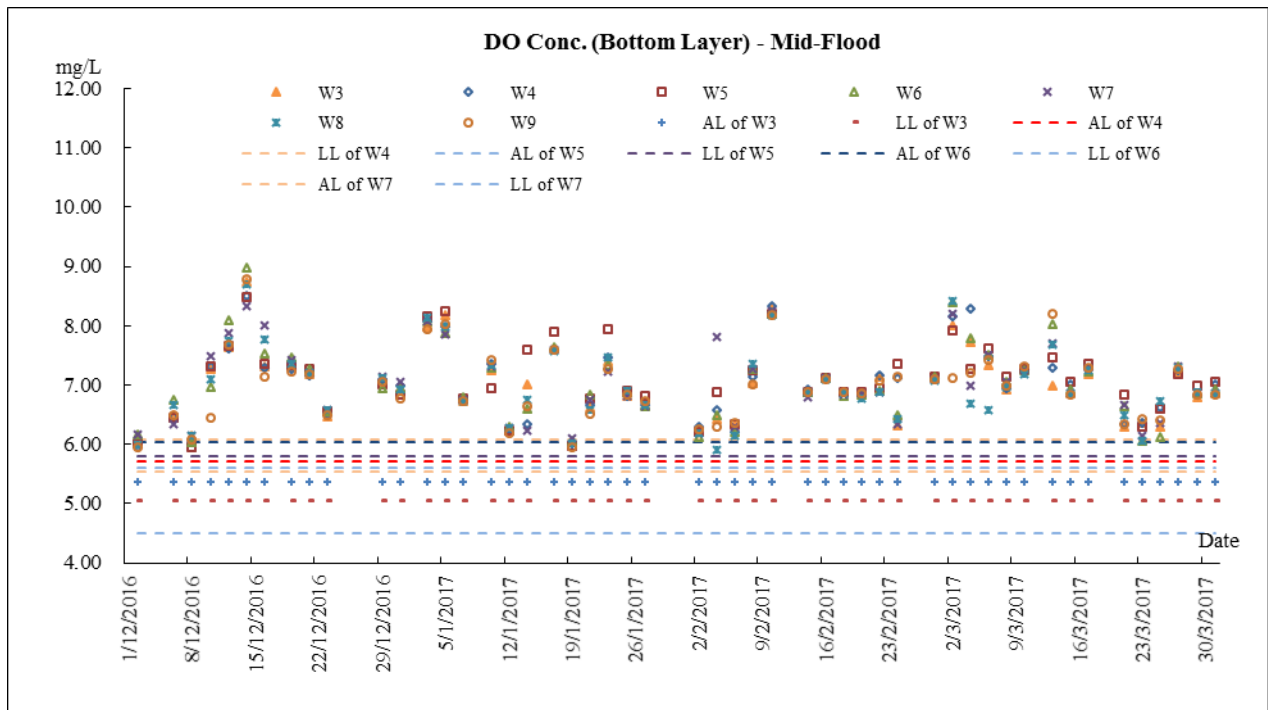
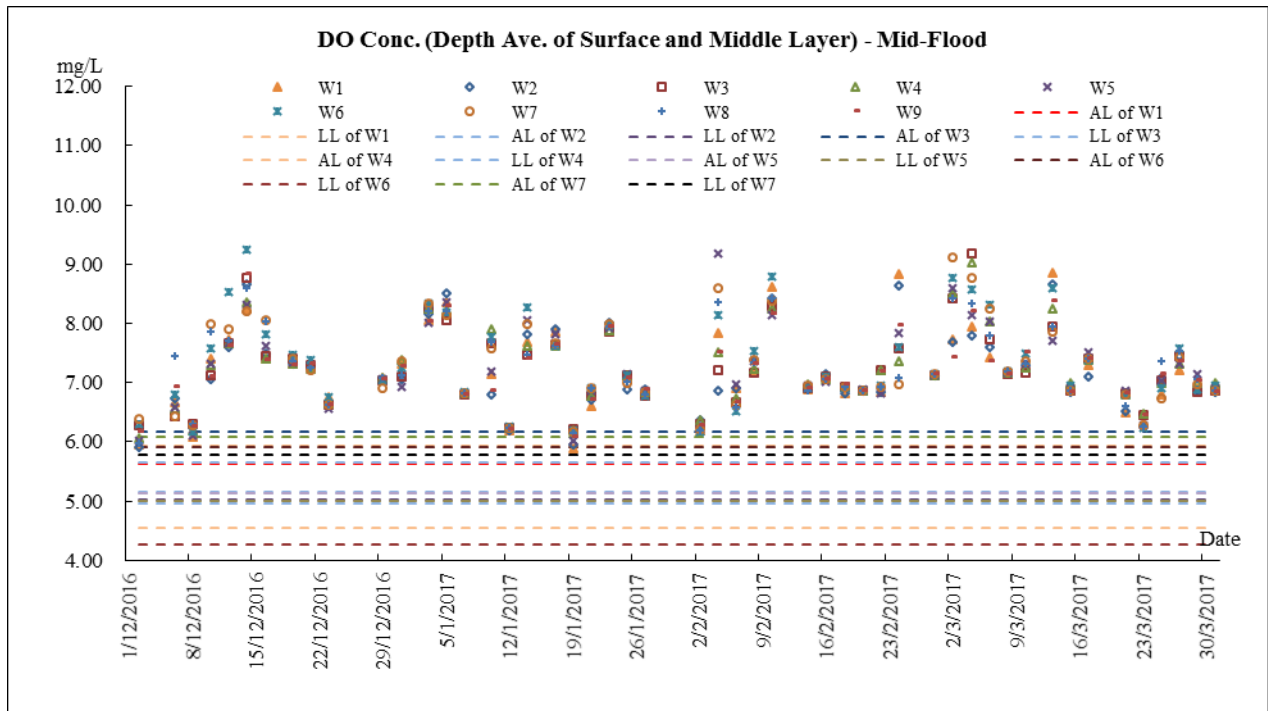
### **Graphical Plots of Impact Monitoring**

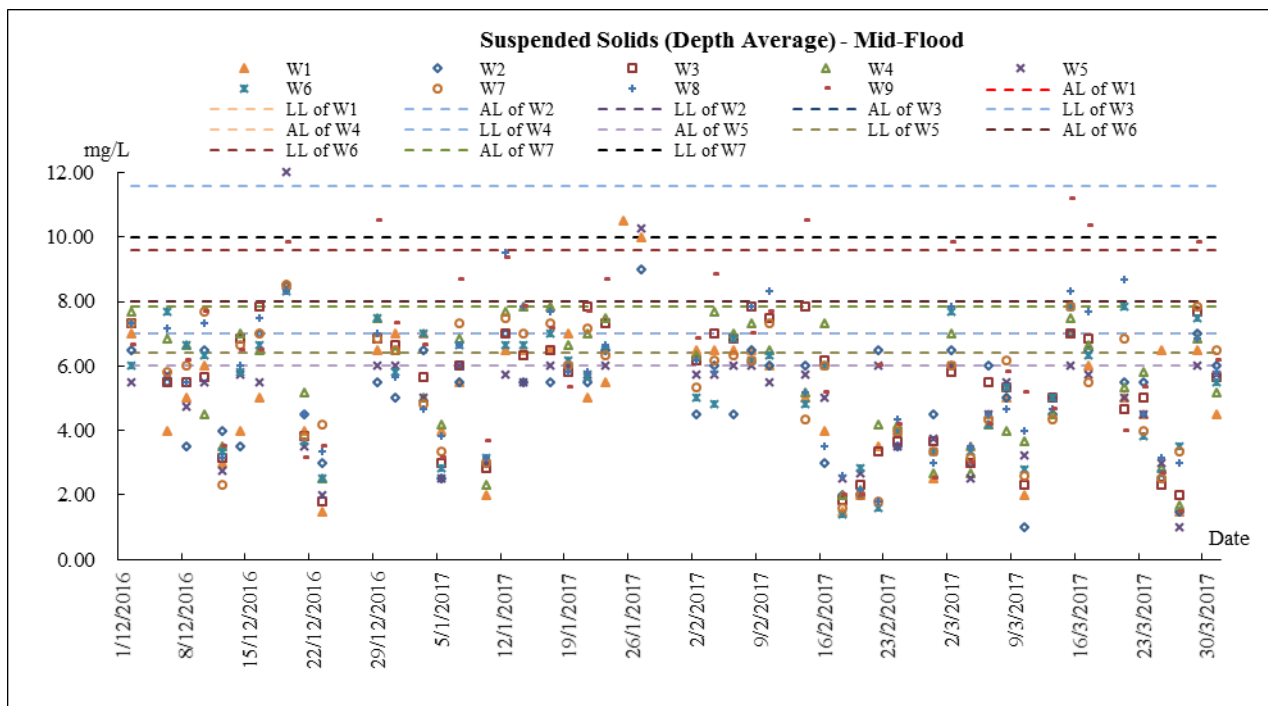
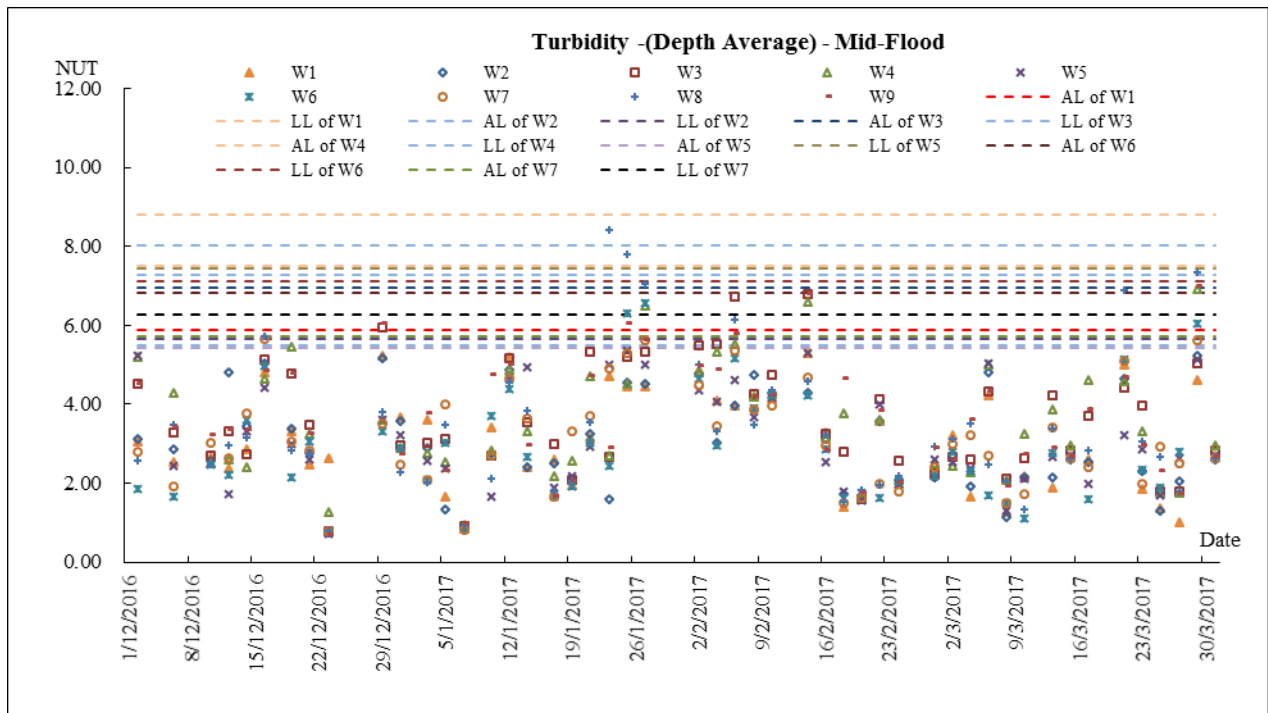
## Marine Water Quality – Mid-ebb



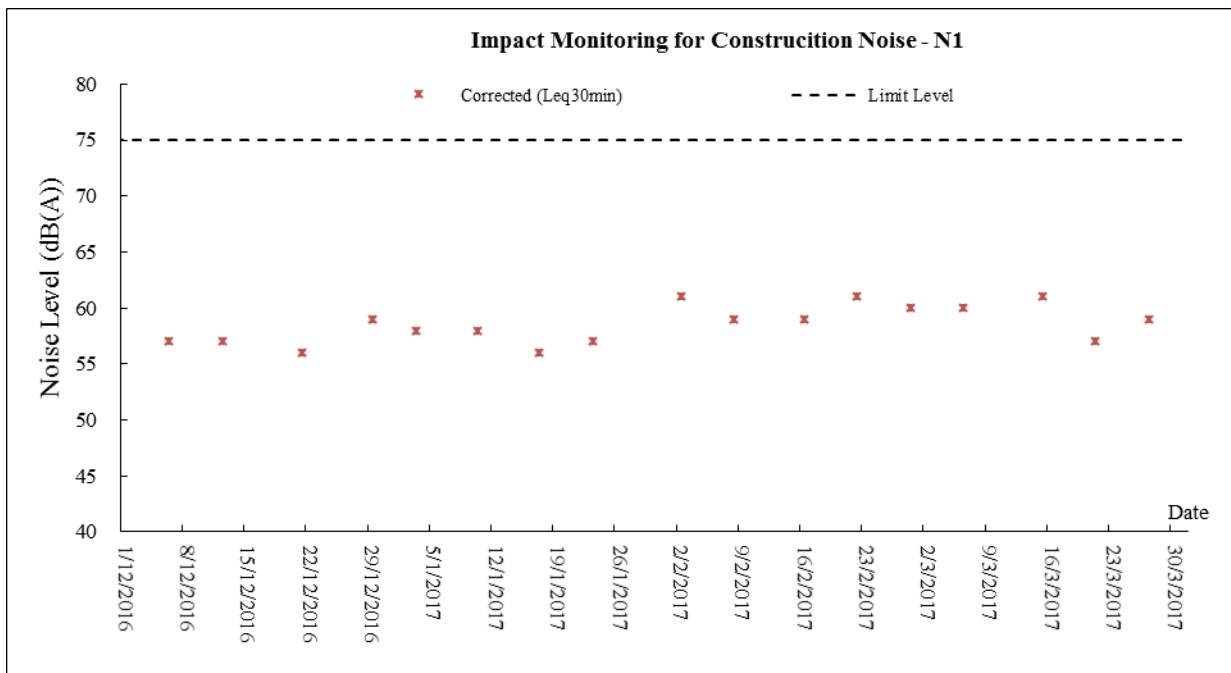


## Marine Water Quality – Mid-flood





## Noise



## **Appendix G**

### **Meteorological Data**

### **Weather Condition – January 2017**

With no significant cold surge affecting the coastal areas of Guangdong, January 2017 became the warmest January in Hong Kong with record-breaking monthly mean temperature of 18.5 degrees and monthly mean minimum temperature of 17.0 degrees, 2.2 degrees and 2.5 degrees above their respective normals. The month was drier than usual in terms of rainfall amount with only 7.8 millimetres in total, less than one-third of the normal of 24.7 millimetres for January.

### **Weather Condition – February 2017**

February 2017 was brighter than usual, with the duration of sunshine in the month more than 40 percent above normal. The month was also relatively mild with a mean temperature of 17.0 degrees, 0.2 degree above the normal of 16.8 degrees. The monthly total rainfall was 19.9 millimetres, less than half of the normal of 54.4 millimetres. The accumulated rainfall of 27.7 millimetres in the first two months of the year was about 65 percent below the normal of 78.9 millimetres for the same period.

### **Weather Condition –March 2017**

Going into a season of transition between the northeast monsoon and the mild and humid maritime airstream over the south China coast, local weather in March 2017 was marked by fluctuating temperatures. While the monthly mean temperature of 19.3 degrees was only 0.2 degree above the normal of 19.1 degrees, total rainfall in the month, 48.0 millimetres, was about 42 percent below the March normal of 82.2 millimetres. The accumulated rainfall of 75.7 millimetres in the first three months of the year was about 53 percent below the normal of 161.3 millimetres for the same period.

\*The detailed meteorological data for each successive day can be referred to in the Monthly EM&A Reports (January, February, and March 2017).



## **Appendix H Monthly Summary Waste Flow Table**

Name of Department: WSD

Contract No.: 1/WSD/13

**MONTHLY SUMMARY WASTE FLOW TABLE FOR 2017 (YEAR)**

QUARTER ENDING	ACTUAL QUANTITIES OF INERT C&D MATERIALS GENERATED MONTHLY						ACTUAL QUANTITIES OF C&D WASTES GENERATED MONTHLY					
	TOTAL QUANTITY GENERATED (IN '000M <sup>3</sup> )	BROKEN CONCRETE (SEE NOTE 3) (IN '000M <sup>3</sup> )	REUSED IN THE CONTRACT (IN '000M <sup>3</sup> )	REUSED IN OTHER PROJECTS (IN '000M <sup>3</sup> )	DISPOSED AS PUBLIC FILL (IN '000M <sup>3</sup> )	IMPORTED FILL (IN '000M <sup>3</sup> )	METALS (IN '000 KG)	PAPER/ CARDBOARD PACKAGING (IN '000KG)	PLASTICS (SEE NOTE 2) (IN '000KG)	CHEMICAL WASTE (IN '000KG)	OTHERS, E.G. GENERAL REFUSE (IN '000M <sup>3</sup> )	
JAN	-	-	-	-	27.175	-	-	-	-	-	7.7	
FEB	-	-	-	-	0	-	-	-	-	-	9.77	
MAR	-	-	-	-	0	-	-	-	-	-	7.04	
APR	-	-	-	-	-	-	-	-	-	-	-	
MAY	-	-	-	-	-	-	-	-	-	-	-	
JUNE	-	-	-	-	-	-	-	-	-	-	-	
<b>SUB-TOTAL</b>	<b>0</b>	<b>0</b>	<b>0</b>	<b>0</b>	<b>27.175</b>	<b>0</b>	<b>0</b>	<b>0</b>	<b>0</b>	<b>0</b>	<b>24.51</b>	
JULY	-	-	-	-	-	-	-	-	-	-	-	
AUG	-	-	-	-	-	-	-	-	-	-	-	
SEPT	-	-	-	-	-	-	-	-	-	-	-	
OCT	-	-	-	-	-	-	-	-	-	-	-	
NOV	-	-	-	-	-	-	-	-	-	-	-	
DEC	-	-	-	-	-	-	-	-	-	-	-	
<b>TOTAL</b>	<b>0</b>	<b>0</b>	<b>0</b>	<b>0</b>	<b>27.175</b>	<b>0</b>	<b>0</b>	<b>0</b>	<b>0</b>	<b>0</b>	<b>24.51</b>	

## **Appendix I**

### **Implementation Schedule for Environmental Mitigation Measures (ISEMM)**

Table A.2 Implementation Schedule of Water Quality Mitigation Measures

EIA Ref	EM&A Ref	Recommended Mitigation Measures	Objectives of the Recommended Measures and Main Concerns to addressed	Location / Timing	Implementation Agent	Implementation Stages*			Relevant Legislation & Guidelines
						D	C	O	
<b>Water Quality - Construction Phase</b>									
<i>General</i>									
3.7.2	2.9.2	The Contractor shall observe and comply with the Water Pollution Control Ordinance (WPCO) and its subsidiary regulations. The Contractor shall carry out the works in such a manner as to minimise adverse impacts on the water quality during execution of the works. In particular the Contractor shall arrange his method of working to minimise the effects on the water quality within and outside the site and on the transport routes.	To minimize adverse water quality impact during construction	All works site / during construction	Construction Contractor	√			Water Pollution Control Ordinance
3.7.3	2.9.3	The Contractor shall follow the practices, and be responsible for the design, construction, operation and maintenance of all the mitigation measures below and as specified in ProPECC PN 1/94 - Construction Site Drainage. The design of the mitigation measures shall be submitted by the Contractor to the Engineer for approval. All discharge from the construction works should meet the discharge standards stipulated under the WPCO "Technical Memorandum on Standards for Effluents Discharged into Drainage and Sewerage Systems, Inland and Coastal Waters".	To minimize adverse water quality impact during construction	All works site / during construction	Construction Contractor	√			ProPECC PN 1/94

EIA Ref	EM&A Ref	Recommended Mitigation Measures	Objectives of the Recommended Measures and Main Concerns to addressed	Location / Timing	Implementation Agent	Implementation Stages*			Relevant Legislation & Guidelines
						D	C	O	
3.7.4	2.9.4	<i>Site Preparation / Clearance</i> Proper construction site drainage management measures should be implemented to control site runoff and drainage, and thereby prevent high sediment loadings from reaching nearby water bodies. Site runoff and wastewater should not be discharged into nearby water bodies without proper treatment.	To minimize adverse water quality impact during construction	All works site / during construction	Construction Contractor		√		ProPECC PN 1/94
3.7.5	2.9.5	Turbid water from construction sites must be treated to minimise the solids content before being discharged. Advice on the handling and disposal of site discharge is given in the ProPECC Note PN 1/94 – “Construction Site Drainage”.	To minimize adverse water quality impact during construction	All works site / during construction	Construction Contractor		√		ProPECC PN 1/94
3.7.6	2.9.6	In general, surface runoff from construction sites should be discharged into water bodies via adequately designed silt removal facilities such as sand traps, silt traps and sedimentation tanks. Channels or earth bunds or sand bag barriers should be provided on site to properly direct stormwater to such silt removal facilities. Sufficient numbers of pumps and tanks of adequate capacity should be provided on-site. Perimeter channels at site boundaries should be provided to intercept storm run-off from outside the site so that it will not wash across the site. Catchpits and perimeter channels should be	To minimize adverse water quality impact during construction	All works site / during construction	Construction Contractor		√		ProPECC PN 1/94

EIA Ref	EM&A Ref	Recommended Mitigation Measures	Objectives of the Recommended Measures and Main Concerns to addressed	Location / Timing	Implementation Agent	Implementation Stages*			Relevant Legislation & Guidelines
						D	C	O	
		constructed in advance of earthworks.							
3.7.7	2.9.7	Silt removal facilities and diversion channels should be maintained and the deposited silt and grit should be removed regularly, especially at the onset of and after each rainstorm to ensure proper functioning of these facilities at all times.	To minimize adverse water quality impact during construction	All works site / during construction	Construction Contractor	√			ProPECC PN 1/94
3.7.8	2.9.8	Measures should be taken to prevent the washing away of construction materials, soil, silt or debris into the nearby water bodies. Open stockpiles susceptible to erosion should be covered with tarpaulin or similar fabric and provided with containment such as bunds, sand bag barriers or equivalent measures, especially during the wet season (April – September) or when heavy rainstorm is predicted. Runoff to watercourses should be intercepted by minimising flat exposed areas of permeable soil, and by forming pits or diversion channels into which runoff can flow to suitable treatment facilities before discharge.	To minimize adverse water quality impact during construction	All works site / during construction	Construction Contractor	√			ProPECC PN 1/94
3.7.9	2.9.9	<i>Drilling Works</i> <i>Launching site at Cheung Chau</i> The proposed launching site at Cheung Chau should be paved with a slight fall towards land to prevent site runoff from directly flowing to the	To minimize adverse water quality impact from	Proposed launching site at Cheung Chau /	Construction Contractor	√			Water Pollution Control Ordinance

EIA Ref	EM&A Ref	Recommended Mitigation Measures	Objectives of the Recommended Measures and Main Concerns to addressed	Location / Timing	Implementation Agent	Implementation Stages*			Relevant Legislation & Guidelines
						D	C	O	
3.7.10	2.9.10	<p>sea. The launching site should be provided with an adequately designed site drainage system to contain and treat polluted site runoff and wastewater. Adequate numbers of tank with sufficient capacity should be provided on-site to collect, store and treat drilling fluids, cuttings and/or chemicals. These tanks should be surrounded by bunds and regularly inspected and maintained to avoid leakage.</p>	drilling works	during construction					
3.7.10	2.9.10	<p>During directional drilling, excavated spoil (cuttings) will be carried as a slurry with the drilling fluid to emerge at Cheung Chau. The slurry should be treated to remove the cuttings and recycled as drilling fluid. Cuttings should be stored in containers prior to removal and disposal as construction &amp; demolition material to public fill reception facilities.</p>	To minimize adverse water quality impact from drilling works	Proposed launching site at Cheung Chau / during construction	Construction Contractor	√			Water Pollution Control Ordinance
3.7.11	2.9.11	<p>If temporary storage of cuttings is required for later reuse, this should be undertaken in Cheung Chau. Care should be taken in the storage of cuttings especially during the wet season and the storage area should be covered and banded to prevent silty runoff entering water bodies.</p>	To minimize adverse water quality impact from drilling works	Proposed launching site at Cheung Chau / during construction	Construction Contractor	√			Water Pollution Control Ordinance

EIA Ref	EM&A Ref	Recommended Mitigation Measures	Objectives of the Recommended Measures and Main Concerns to addressed	Location / Timing	Implementation Agent	Implementation Stages*			Relevant Legislation & Guidelines
						D	C	O	
3.7.12	2.9.12	A schematic layout plan of the proposed launching site and drainage measures at Cheung Chau is shown in <i>Figure 3.3</i> to demonstrate the launching site has adequate land area to setup the necessary construction equipment, auxiliary equipment, site offices and drilling fluid containment, recovery and treatment systems. In general, the site will be divided into clean area and dirty area. The clean area will be used to house the site offices, storage area and other non-polluting uses. The dirty area will be the main drilling works site consisting of the drilling rig, entry pit, mud tank, drilling pipes storage, drilling fluid recycling and treatment systems, stockpiling area and wastewater treatment systems.	To minimize adverse water quality impact from drilling works	Proposed launching site at Cheung Chau / during construction	Construction Contractor		√		Water Pollution Control Ordinance
3.7.13	2.9.13	The entire dirty area should be surrounded by a 0.5 m tall concrete bund to fully contain and prevent site runoff from discharging into the marine waters untreated as well as to prevent surface runoff from entering the site. The entry pit should be further surrounded by a 0.3 m tall concrete bund for added protection to contain and avoid spillage of drilling fluid. All site runoff should be diverted to an adequately designed wastewater treatment system for treatment before discharge.	To minimize adverse water quality impact from drilling works	Proposed launching site at Cheung Chau / during construction	Construction Contractor		√		Water Pollution Control Ordinance



EIA Ref	EM&A Ref	Recommended Mitigation Measures	Objectives of the Recommended Measures and Main Concerns to addressed	Location / Timing	Implementation Agent	Implementation Stages*			Relevant Legislation & Guidelines
						D	C	O	
3.7.14	2.9.14	The perimeter of the clean area should be surrounded with 300 mm u-channel to collect and divert all site runoff for treatment before discharge. Bund should be provided to prevent surrounding surface runoff from entering the site.	To minimize adverse water quality impact from drilling works	Proposed launching site at Cheung Chau / during construction	Construction Contractor		√		Water Pollution Control Ordinance
3.7.15	2.9.15	After separating the cuttings, bentonite slurry should be re-circulated for reuse in the drilling works. By adopting a forward reaming approach all slurry treatment and drilling fluid recycling systems should be located and managed on Cheung Chau.	To minimize adverse water quality impact from drilling works	Proposed launching site at Cheung Chau / during construction	Construction Contractor		√		Water Pollution Control Ordinance
3.7.16	2.9.16	<i>Reception Site at Lantau</i> The pilot hole and reaming should be stopped approximately 50 m short of the final exit point at Chi Ma Wan in order to prevent any release of slurry in to the marine environment. Prior to drilling the final 50 m, the reamed hole should be thoroughly cleaned with water to remove all cuttings and drilling fluid. The final 50 m of drilling should be completed using water instead of bentonite in order to prevent the release of bentonite at the exit pit. Approximately 0.3 m high concrete bund should be constructed around the exit pit to contain the drilling fluid, which is mainly silty water and generated when the drill head bores through the rock at Lantau during the	To minimize adverse water quality impact from drilling works	Proposed reception site at Lantau / during construction	Construction Contractor		√		Water Pollution Control Ordinance

EIA Ref	EM&A Ref	Recommended Mitigation Measures	Objectives of the Recommended Measures and Main Concerns to addressed	Location / Timing	Implementation Agent	Implementation Stages*			Relevant Legislation & Guidelines
						D	C	O	
3.7.17	2.9.17	<p>final drilling process. The exact level of the concrete bund should be determined on site to ensure that it will not be lower than the ground level of the launching site at Cheung Chau.</p> <p>The use of containment structure such as earth bund, sand bag barriers wrapped with geotextile fabric or similar material, diversion channels or other similar techniques should be installed surrounding the site boundary at Lantau during the wet season to intercept storm runoff from outside the site so that it will not wash across the site (or into the exit pit).</p>	To minimize adverse water quality impact from drilling works	Proposed reception site at Lantau / during construction	Construction Contractor		√		Water Pollution Control Ordinance
3.7.18	2.9.18	To provide further protection, silt curtain should be installed before commencement of works at Lantau to minimize the water quality impact. The design and installation should be certified by the Environmental Team (ET), verified by the Independent Environmental Checker (IEC) and approved by the Engineer to ensure the intended protection can be achieved. The Contractor should regularly inspect and maintain the silt curtain to ensure its effectiveness.	To minimize adverse water quality impact from drilling works	Proposed reception site at Lantau / during construction	Construction Contractor		√		Water Pollution Control Ordinance
3.7.20	2.9.20	<i>Management Plans and Monitoring</i> The Contractor should submit a Drainage	To minimize adverse	All works site /	Construction		√		Water Pollution

EIA Ref	EM&A Ref	Recommended Mitigation Measures	Objectives of the Recommended Measures and Main Concerns to addressed	Location / Timing	Implementation Agent	Implementation Stages*			Relevant Legislation & Guidelines
						D	C	O	
3.7.21	2.9.21	Management Plan detailing the temporary drainage measures along with the proposed measures to ameliorate the potential water quality impacts to the Environmental Team (ET) for certification, the Independent Environmental Checker (IEC) for verification and to the Engineer for approval before commencement of the construction works.	water quality impact during construction	during construction	Contractor				Control Ordinance
		The Contractor should also submit a Drilling Fluid Management Plan outlining expected volume of water, the type of soil and an estimated quantity of bentonite, full details of plans for monitoring drilling fluid flow (out and return) and pressure, wastewater discharge, slurry containment, treatment, recycling and transport, and the approved disposal site. The plan should also contain details of contingency plans for dealing with frac-out or other inadvertent release of slurry. Contingency plans should include the provision of standby pumps, containment booms, vacuum unit and tanks on site to contain and remove turbid, muddy water should incidental frac-outs occur.	To minimize adverse water quality impact during construction in particular during drilling works	All works site / during construction	Construction Contractor	√			Water Pollution Control Ordinance
3.7.22	2.9.22	Regular monitoring of suspended solids and turbidity should be conducted during construction works. Any exceedance of water quality in the nearby water bodies caused by site runoff should be rectified in accordance with EM&A programme	To minimize adverse water quality impact during construction	All works site / during construction	Construction Contractor	√			Water Pollution Control Ordinance

EIA Ref	EM&A Ref	Recommended Mitigation Measures	Objectives of the Recommended Measures and Main Concerns to addressed	Location / Timing	Implementation Agent	Implementation Stages*			Relevant Legislation & Guidelines
						D	C	O	
3.7.23	2.9.23	for this Project.  <i>Concreting Work</i> Runoff should be carefully channelled and treated to prevent concrete-contaminated water from entering water bodies. Adjustment of pH can be achieved by adding a suitable neutralising reagent to wastewater prior to discharge.	To minimize adverse water quality impact during construction (in particular concreting works)	All works site / during construction	Construction Contractor	√			Water Pollution Control Ordinance
3.7.24	2.9.24	Any exceedance of the acceptable range of pH levels in nearby water bodies caused by site runoff containing concrete should be monitored and rectified under the EM&A programme for this Project.	To minimize adverse water quality impact during construction (in particular concreting works)	All works site / during construction	Construction Contractor	√			Water Pollution Control Ordinance
3.7.25	2.9.25	<i>Site Workshop or Depot</i> <i>General Construction Works</i> Site workshop or depot including storage of chemicals and chemical waste should be located at the proposed launching site in Cheung Chau only. No workshop or depot should be located at the proposed reception site in Lantau.	To minimize adverse water quality impact during construction	All works site / during construction	Construction Contractor	√			Water Pollution Control Ordinance
3.7.26	2.9.26	Any Contractor generating waste oil or other chemicals as a result of his activities should	To minimize adverse water quality impact	All works site / during	Construction Contractor	√			Water Pollution Control Ordinance

EIA Ref	EM&A Ref	Recommended Mitigation Measures	Objectives of the Recommended Measures and Main Concerns to addressed	Location / Timing	Implementation Agent	Implementation Stages*			Relevant Legislation & Guidelines
						D	C	O	
3.7.27	2.9.27	<p>register as a chemical waste producer and provide a safe designated storage area for chemicals on site. The storage site should be located away from existing water bodies.</p> <p>All compounds in works areas should be located on areas of hard standing surface with provision of diversion channels and settlement ponds where necessary to allow interception and controlled release of settled / treated water. Hard standing compounds should drain via an oil interceptor. The oil interceptor should be regularly inspected and cleaned to avoid wash-out of oil during storm conditions. A bypass should be provided to avoid overload of the interceptor's capacity. To prevent spillage of fuels or other chemicals to water bodies, all fuel tanks and storage areas should be sited on sealed areas within a bund of a capacity equal to 110% of the storage capacity of the largest tank. Where temporary storage of chemicals or fuel drums outside the storage area is necessary, drip tray should be provided. Disposal of the waste oil should be carried out by a licensed collector. Good housekeeping practices should be implemented to minimise careless spillage and to keep the storage and the work space in a tidy and clean condition. Appropriate training including safety codes and relevant manuals should be given to the personnel who regularly handle the chemicals on site.</p>	<p>during construction</p> <p>To minimize adverse water quality impact during construction</p>	<p>construction</p> <p>All works site / during construction</p>	<p>Construction Contractor</p>				<p>Water Pollution Control Ordinance</p>

EIA Ref	EM&A Ref	Recommended Mitigation Measures	Objectives of the Recommended Measures and Main Concerns to addressed	Location / Timing	Implementation Agent	Implementation Stages*			Relevant Legislation & Guidelines
						D	C	O	
3.7.28	2.9.28	<p><i>Emergency Contingency Plan</i></p> <p>The Contractor should prepare an Emergency Contingency Plan (spill response plan) for the Project to contain and remove accidental spillage of drilling fluids, chemicals and all hazardous materials on-site including fuels at short notice and to prevent or to minimize the quantities of contaminants from entering the nearby water bodies and affecting the sensitive habitats. The Contractor should submit the Emergency Contingency Plan to the ET for review &amp; comment and to the Engineer for approval. The Plan should include, but not limited to, the following:</p> <ul style="list-style-type: none"> <li>(i) potential emergency situations</li> <li>(ii) chemicals or hazardous materials used on-site (and their location)</li> <li>(iii) emergency response team</li> <li>(iv) emergency action plans and procedures</li> <li>(v) list of emergency telephone hotlines</li> <li>(vi) locations and types of emergency response equipment</li> <li>(vii) training plan and emergency drill</li> <li>(viii) schedules for review and audit.</li> </ul>	<p>To prevent or minimize the quantities of contaminants entering the nearby water bodies and affecting the habitats in case of accidental spillage of chemicals and hazardous materials</p>	<p>All works site / during construction</p>	<p>Construction Contractor</p>	<p>√</p>			<p>Water Pollution Control Ordinance</p>

EIA Ref	EM&A Ref	Recommended Mitigation Measures	Objectives of the Recommended Measures and Main Concerns to addressed	Location / Timing	Implementation Agent	Implementation Stages*			Relevant Legislation & Guidelines
						D	C	O	
3.7.29	2.9.29	<p><i>General Guidance for Handling Spillage / Leakage</i></p> <p>In the event that accidental spillage or leakage of hazardous substances / chemical wastes takes place, the response procedures as listed below should be followed. It should be noted that the procedures below are not exhaustive. The Contractor should propose other response procedures in the emergency contingency plan based on actual site conditions as well as the particular types and quantities of chemicals or hazardous substances used, handled and stored on-site.</p> <ul style="list-style-type: none"> <li>• Contact person in charge or nominated person immediately and initiate action plans based on the emergency contingency plan.</li> <li>• Oil leakage or spillage should be contained and cleaned up immediately. Waste oil should be collected and stored for recycling or disposal in accordance with the Waste Disposal Ordinance.</li> <li>• Instruct untrained personnel to keep at a safe distance well away from the spillage area.</li> <li>• If the spillage / leakage is severe or is causing hazard to life, initiate emergency evacuation and call the emergency services.</li> <li>• Only trained persons equipped with suitable protective clothing and equipment should be allowed to enter and clean up the waste</li> </ul>	To prevent or minimize the quantities of contaminants entering the nearby water bodies and affecting the habitats in case of accidental spillage of chemicals and hazardous materials	All works site / during construction	Construction Contractor		√		Water Pollution Control Ordinance

EIA Ref	EM&A Ref	Recommended Mitigation Measures	Objectives of the Recommended Measures and Main Concerns to addressed	Location / Timing	Implementation Agent	Implementation Stages*			Relevant Legislation & Guidelines
						D	C	O	
		<p>spillage / leakage area.</p> <ul style="list-style-type: none"> <li>Where the spillage / leakage is contained in the enclosed storage area, the waste can be transferred back into suitable containers by suitable handheld equipment, such as hand operated pumps, scoops or shovels. If the spillage / leakage quantity is small, it can be covered and mixed with suitable absorbing materials such as absorbent tissue paper, pads, dry soft sand or vermiculite. The resultant slurry should be treated as chemical waste and transferred to suitable containers for disposal.</li> <li>For spillage / leakage into nearby water bodies, immediate action is required to contain the spillage / leakage. Appropriate structural, physical barrier or secondary containment (e.g. containment booms) should be deployed to contain the spill and if possible to prevent contaminated water from dispersing away from the source. Suitable liquid absorbing materials such as absorbent tissue paper, pads or rolls should be used to recover the spilt substances. The resultant slurry should be treated as chemical waste and transferred to suitable containers for disposal.</li> <li>For spillage / leakage in other areas, immediate action is required to contain the spillage / leakage. Suitable liquid absorbing materials such as absorbent tissue paper, pads, dry soft sand or vermiculite should be used to cover the spill. The resultant slurry should be</li> </ul>							



EIA Ref	EM&A Ref	Recommended Mitigation Measures	Objectives of the Recommended Measures and Main Concerns to addressed	Location / Timing	Implementation Agent	Implementation Stages*			Relevant Legislation & Guidelines
						D	C	O	
		<p>treated as chemical waste and transferred to suitable containers for disposal.</p> <ul style="list-style-type: none"> <li>Areas that have been contaminated by chemical waste spillage / leakage should be cleaned. While water is a soluble solvent for aqueous chemical wastes and water soluble organic waste, kerosene or turpentine should be used for organic chemical wastes that are not soluble in water. The waste from the cleanup operation should be treated and disposed of as chemical waste.</li> <li>In incidents where the spillage / leakage may result in significant contamination of an area or risk of pollution, the Environmental Protection Department and other relevant departments should be informed immediately.</li> </ul>							
3.7.30	2.9.30	<p><i>Presence of Additional Population (Workers)</i></p> <p>Sewage arising from the additional construction workers on site should be collected in a suitable storage facility, such as portable chemical toilets. An adequate number of portable toilets should be provided for the construction workforce. The portable toilets should be maintained in a state that will not deter the workers from using them. Wastewater collected should be discharged into foul sewers and collected by licensed collectors.</p>	To minimize adverse water quality impact during construction	All works site / during construction	Construction Contractor		√		ProPECC PN 1/94  Water Pollution Control Ordinance
3.7.31	2.9.31	The collected wastewater from sewage facilities and also from eating areas or washing facilities of site offices should be disposed to foul sewer. If	To minimize adverse water quality impact	All works site / during construction	Construction Contractor		√		ProPECC PN 1/94

EIA Ref	EM&A Ref	Recommended Mitigation Measures	Objectives of the Recommended Measures and Main Concerns to addressed	Location / Timing	Implementation Agent	Implementation Stages*			Relevant Legislation & Guidelines
						D	C	O	
		there is no foul sewer in the vicinity, a septic tank and soakaway system or for larger flow, a sewage treatment plant should be provided. All domestic sewage discharges (except into foul sewer) are controlled under the WPCO. The Contractor must apply for a discharge licence from EPD and must comply with the terms and conditions of a valid WPCO licence.	during construction						Water Pollution Control Ordinance
3.7.32	2.9.32	<i>Sterilization of Water Main Prior to Commissioning</i> Effluent from the sterilization of water main should be treated including dechlorination by physical process e.g. adsorption by activated carbon filter, or chemical process e.g. neutralisation by dechlorination agent dosing to ensure compliance with the discharge requirements stipulated in the TM-DSS. Adequate tanks with sufficient capacity should be provided to allow proper treatment of the effluent prior to discharge.	To minimize adverse water quality impact during construction in particular during sterilization of the completed water main	All works site / during construction	Construction Contractor	√			ProPECC PN 1/94 Water Pollution Control Ordinance
3.7.33	2.9.33	The sterilization of the water main and the dechlorination process should be conducted at the launching site at Cheung Chau. As the site at Cheung Chau is designated for secondary recreational contact, the sterilization of the main should be scheduled during the dry season. The	To minimize adverse water quality impact during construction in particular during sterilization of the completed water main	All works site / during construction	Construction Contractor	√			ProPECC PN 1/94 Water Pollution Control Ordinance

EIA Ref	EM&A Ref	Recommended Mitigation Measures	Objectives of the Recommended Measures and Main Concerns to addressed	Location / Timing	Implementation Agent	Implementation Stages*			Relevant Legislation & Guidelines
						D	C	O	
3.7.34	2.9.34	<p>Contractor should submit for the Engineer approval, details of the dechlorination process and any chemicals including dosage to be used.</p> <p>The Contractor should provide a dechlorination plant of sufficient capacity to contain and treat the sterilising water with high chlorine concentration before discharge. Details of the specification of the dechlorination plant should be submitted to the Engineer for approval. They should include but not limited to the following:</p> <ul style="list-style-type: none"> <li>the nominal flow rate shall not be less than 36 cubic meter per hour;</li> <li>the plant shall be capable of dechlorinating water with chlorine level up to 40 mg/litre;</li> <li>the maximum chlorine level of dechlorinated water shall be &lt;0.2 mg/litre;</li> <li>the recommended contact time if dechlorination by adsorption with activated carbon filter is proposed;</li> <li>a water meter or other measuring device shall be installed at the inlet pipe of the dechlorination plant to measure the amount of water treated, in cubic metres; and</li> <li>sensors and data loggers for continuous measurement and record of chlorine level shall be installed at the inlet and outlet pipe of the dechlorination plant.</li> </ul>	<p>To minimize adverse water quality impact during construction in particular during sterilization of the completed water main</p>	<p>All works site / during construction</p>	<p>Construction Contractor</p>	<p>√</p>			<p>ProPECC PN 1/94</p> <p>Water Pollution Control Ordinance</p>

EIA Ref	EM&A Ref	Recommended Mitigation Measures	Objectives of the Recommended Measures and Main Concerns to addressed	Location / Timing	Implementation Agent	Implementation Stages*			Relevant Legislation & Guidelines
						D	C	O	
3.7.35	2.9.35	<i>In-situ</i> testing of total residual chlorine should be conducted every hour at the discharge point to ensure the chlorine concentration does not exceed the stipulated maximum level when dechlorinated water is being discharged.	To minimize adverse water quality impact during construction in particular during sterilization of the completed water main	All works site / during construction	Construction Contractor	√			ProPECC PN 1/94  Water Pollution Control Ordinance
3.7.36	2.9.36	If the dechlorinated water exceed the allowed concentration, discharge must be suspended and the water should be circulated to a standby tank for further dechlorination and testing. The location of the sampling point will depends on the discharge point to be proposed by the Contractor. The Contractor should submit details of the proposed sampling location, frequency and equipment for verification by the ET Leader and approval by the Engineer before commencement of the sterilization work of the completed water main. The proposed sampling location(s) should be submitted to EPD for reference.	To minimize adverse water quality impact during construction in particular during sterilization of the completed water main	All works site / during construction	Construction Contractor	√			ProPECC PN 1/94  Water Pollution Control Ordinance
<b>Water Quality - Operational Phase</b>									

\* D=Design, C=Construction, O=Operation  
 N/A Not applicable

Table A.4 Implementation Schedule of Waste Management Measures

EIA Ref	EM&A Ref	Recommended Mitigation Measures	Objectives of the Recommended Measures and Main Concerns to addressed	Location / Timing	Implementation Agent	Implementation Stages*			Relevant Legislation & Guidelines
						D	C	O	
<b>Waste - Construction Phase</b>									
<i>General</i>									
7.6.1	5.1.1.1	The HKSAR Government's construction and demolition waste management policy follows the same hierarchy as for other wastes, i.e. in order of desirability: avoidance, minimisation, recycling, treatment and safe disposal of waste. During the construction period the Contractor, Engineer and environmental specialists (Environmental Team, Independent Environmental Check) should work closely together with a view to reduce the volumes of materials requiring removal and final disposal.	To reduce the volumes of materials requiring removal and final disposal	All works site / during construction	Construction Contractor, Engineer, Environmental Team and Independent Environmental Check	√			Environmental Impact Assessment Ordinance Technical Memorandum on EIA Process
7.6.2	5.1.2	Upon appointment, the main Contractor of each construction contract should prepare and implement an Environmental Management Plan (EMP) in accordance with ETWB TCW No. 19/2005 – "Environmental Management on Construction Sites" which should describe the arrangements for avoidance, reuse, recovery, recycling, storage, collection, treatment and disposal of different categories of waste to be generated from the construction activities. The EMP should incorporate site specific factors, such as the designation of areas for segregation and temporary storage of reusable and recyclable materials. The waste management plan now becomes part of the EMP. The EMP should be submitted to the Engineer for approval. The	Waste reduction, reuse, recycling and proper disposal of waste	All works site / during construction	Construction Contractor	√			Waste Disposal Ordinance ETWB TCW No. 19/2005

EIA Ref	EM&A Ref	Recommended Mitigation Measures	Objectives of the Recommended Measures and Main Concerns to addressed	Location / Timing	Implementation Agent	Implementation Stages*			Relevant Legislation & Guidelines
						D	C	O	
7.6.3	5.1.3	<p>Contractor should implement the waste management practices in the EMP throughout the construction stage of the Project. The EMP should be reviewed regularly and updated (preferably monthly) by the Contractor. The EMP should take into account the recommended mitigation measures in the approved EIA Report.</p> <p>The Contractor should refer to the Construction and Demolition Material Management Plan (C&amp;DMMP) to be conducted during the design stage of this Project to facilitate him in the preparation of the EMP. The C&amp;DMMP should be endorsed by WSD's Vetting Committee and approved by the Public Fill Committee (PFC). WSD's Vetting Committee will monitor the implementation of the C&amp;DMMP and report to Public Fill Committee in accordance with ETWB TCW No. 33/2002 during construction.</p>	<p>Waste reduction, reuse, recycling and proper disposal of waste</p>	<p>All works site / during construction</p>	<p>Construction Contractor</p>	√			<p>Waste Disposal Ordinance                      ETWB TCW No. 19/2005</p>
7.6.4	5.1.4	<p>The Contractor should nominate an appropriate person, such as site agent or environmental officer, to be responsible for collection and effective disposal of all wastes generated at the site to an approved facility. Training of construction staff should be undertaken by the Contractor about the concept of site cleanliness and appropriate waste management procedures. The Contractor should develop and provide toolbox talk for on-site sorting of C&amp;D materials to enhance worker's awareness in handling, sorting, reuse and recycling of C&amp;D</p>	<p>Waste reduction, reuse, recycling and proper disposal of waste</p>	<p>All work sites / during construction</p>	<p>Construction Contractor</p>	√			<p>Waste Disposal Ordinance                      ETWB TCW No. 19/2005</p>

EIA Ref	EM&A Ref	Recommended Mitigation Measures	Objectives of the Recommended Measures and Main Concerns to addressed	Location / Timing	Implementation Agent	Implementation Stages*			Relevant Legislation & Guidelines
						D	C	O	
7.6.5	5.1.5	<p>materials. Requirements for staff training should be included in the EMP.</p> <p>Good planning and site management practice should be employed to eliminate over ordering or mixing of construction materials to reduce wastage. Proper storage and site practices will minimise the damage or contamination of construction materials. Regular cleaning and maintenance of the waste storage area should be provided.</p>	<p>Waste reduction, reuse, recycling and proper disposal of waste</p>	<p>All work sites / during construction</p>	<p>Construction Contractor</p>	√			<p>Waste Disposal Ordinance                      ETWB TCW No. 19/2005</p>
7.6.6	5.1.6	<p>Where waste generation is unavoidable, the potential for recycling or reuse should be rigorously explored. If wastes cannot be recycled, disposal routes described in the EMP should be followed. A recoding system for the amount of waste generated, recycled and disposed (including the disposal sites) should be implemented. In order to monitor the disposal of C&amp;D material and solid wastes at public filling facilities and landfills and to control fly-tipping, a trip-ticket system should be included. One may make reference to ETWB TCW No. 31/2004 for details.</p>	<p>Waste reduction, reuse, recycling and proper disposal of waste</p>	<p>All work sites / during construction</p>	<p>Construction Contractor</p>	√			<p>Waste Disposal Ordinance                      ETWB TCW No. 19/2005, 31/2004</p>
7.6.7	5.1.7	<p>Imported soft fill and rocks, if required, should be source from CEDD's fill bank, other projects or other approved sources instead of using new materials. Approval from the Engineer and all other relevant parties should be obtained by the Contractor before importation of the fill materials.</p>	<p>Waste reduction, reuse, recycling and proper disposal of waste</p>	<p>All work sites / during construction</p>	<p>Construction Contractor</p>	√			<p>Waste Disposal Ordinance                      ETWB TCW No. 19/2005</p>

EIA Ref	EM&A Ref	Recommended Mitigation Measures	Objectives of the Recommended Measures and Main Concerns to addressed	Location / Timing	Implementation Agent	Implementation Stages*			Relevant Legislation & Guidelines
						D	C	O	
7.6.8	5.1.8	The main staging area of the works should be located at the proposed launching site in Cheung Chau. Storage of equipment, materials, chemical waste and general refuse as well as the drilling fluid recycling system should also be located in Cheung Chau.	Waste reduction, reuse, recycling and proper disposal of waste	All work sites / during construction	Construction Contractor		√		Waste Disposal Ordinance ETWB TCW No. 19/2005
7.6.9	5.1.9	<i>On-site Sorting, Reuse and Recycling</i> All waste materials should be segregated into categories covering: <ul style="list-style-type: none"> <li>excavated materials suitable for public filling facilities;</li> <li>remaining C&amp;D waste for landfill;</li> <li>spent bentonite for public filling facilities</li> <li>chemical waste; and</li> <li>general refuse for landfill.</li> </ul>	Waste reduction, reuse, recycling and proper disposal of waste	All work sites / during construction	Construction Contractor		√		Waste Disposal Ordinance ETWB TCW No. 19/2005
7.6.10	5.1.10	Proper segregation and disposal of construction waste should be implemented. Separate containers should be provided for inert and non-inert wastes.	Waste reduction, reuse, recycling and proper disposal of waste	All work sites / during construction	Construction Contractor		√		Waste Disposal Ordinance ETWB TCW No. 19/2005



EIA Ref	EM&A Ref	Recommended Mitigation Measures	Objectives of the Recommended Measures and Main Concerns to addressed	Location / Timing	Implementation Agent	Implementation Stages*			Relevant Legislation & Guidelines
						D	C	O	
7.6.11	5.1.11	The reuse of excavated materials within this Project should be adopted as far as practicable. The opportunity of reusing the material in other projects in Cheung Chau should also be explored.	Waste reduction, reuse, recycling and proper disposal of waste	All work sites / during detailed design and construction	Detailed Design Engineer / Construction Contractor	√	√		Waste Disposal Ordinance ETWB TCW No. 19/2005
7.6.12	5.1.12	Sorting is important to recover materials for reuse and recycling. Specific area should be allocated for on-site sorting of C&D materials and to provide a temporary storage area for those sorted materials such as metals, concrete, timber, plastics, glass, excavated spoils, bricks / tiles and waste papers. If area is limited, all C&D materials should at least be sorted on-site into inert and non-inert component. Non-inert materials (C&D waste) such as bamboo, timber, vegetation, packaging waste and other organic materials should be reused and recycled wherever possible and disposed of to designated landfill only as a last resort. Inert materials (public fill) such as concrete, stone, clay, brick, soil, asphalt and the like should be separated and reuse in this or other projects (subject to approval by the relevant parties in accordance with the ETWB TCW No. 31/2004) before disposed of at a public filling facility operated by Civil Engineering and Development Department (CEDD). Steel and other metals should be recovered from demolition waste stream and recycled.	Waste reduction, reuse, recycling and proper disposal of waste	All work sites / during construction	Construction Contractor	√			Waste Disposal Ordinance ETWB TCW No. 19/2005, 31/2004

EIA Ref	EM&A Ref	Recommended Mitigation Measures	Objectives of the Recommended Measures and Main Concerns to addressed	Location / Timing	Implementation Agent	Implementation Stages*			Relevant Legislation & Guidelines
						D	C	O	
7.6.13	5.1.13	The reuse of inert materials such as soil, rock and broken concrete should be maximised. Waste should be separated into fine, soft and hard materials. With the use of a crusher coarse material can be crushed to make it suitable for use as fill material where fill is required in the works. This minimises the use of imported material and maximises use of the C&D material produced.	Waste reduction, reuse, recycling and proper disposal of waste	All work sites / during construction	Construction Contractor	√			Waste Disposal Ordinance ETWB TCW No. 19/2005
7.6.14	5.1.14	Prior to export of material from the site, the potential for it to be reused should be assessed. Most C&D material can easily be reused with minimum processing. Waste separation methods should be followed to ensure that C&D waste is separated at source. Suitable soft materials should be used for landscaping and grading of embankments. Fine material should be separated out and used as topsoil.	Waste reduction, reuse, recycling and proper disposal of waste	All work sites / during construction	Construction Contractor	√			Waste Disposal Ordinance ETWB TCW No. 19/2005
7.6.15	5.1.15	The feasibility of using recycled aggregates in lieu of virgin materials should be rigorously considered during the detailed design and construction stages as stipulated in WBTC No. 12/2002 and ETWB TCW No. 24/2004. In general, recycled aggregates are suitable for use as fill materials in earthworks, road sub-base formation, and drainage works. Recycled aggregates can also be used in concrete (up to Grade 35) for mass concrete walls and other minor structures such as planter boxes, toe wall	Waste reduction, reuse, recycling and proper disposal of waste	All work sites / during construction	Construction Contractor	√			Waste Disposal Ordinance ETWB TCW No. 19/2005, 24/2004 WBTC No. 12/2002

EIA Ref	EM&A Ref	Recommended Mitigation Measures	Objectives of the Recommended Measures and Main Concerns to addressed	Location / Timing	Implementation Agent	Implementation Stages*			Relevant Legislation & Guidelines
						D	C	O	
		planters and pavement, etc.							
7.6.16	5.1.16	<p><i>Site Clearance / Demolition Materials</i></p> <p><i>Excavated Materials</i></p> <p>All C&amp;D materials should be sorted on-site into inert and non-inert components by the Contractor. Non inert materials (C&amp;D waste) such as wood, glass and plastic should be reused and recycled before disposal to a designated landfill as a last resort (currently assume to be the WENT Landfill) via the Cheung Chau Refuse Transfer Station. Inert materials (public fill) should be reused on-site or in other projects approved by relevant parties in accordance with the ETWB TCW No. 31/2004 before disposed of at public fill reception facilities. Steel and other metals if any should be recovered from C&amp;D materials and recycled.</p>	Waste reduction, reuse, recycling and proper disposal of waste	All work sites / during construction	Construction Contractor	√			Waste Disposal Ordinance ETWB TCW No. 19/2005, 31/2004
7.6.17	5.1.17	Good quality reusable topsoil should be stockpiled for later landscaping works. Stockpiles should be less than 2 m in height, formed to a safe angle of repose and hydroseeded or covered with tarpaulin to prevent erosion during the rainy season and to minimise dust generation.	Waste reduction, reuse, recycling and proper disposal of waste	All work sites / during construction	Construction Contractor	√			Waste Disposal Ordinance ETWB TCW No. 19/2005
7.6.18	5.1.18	Control measures for temporary stockpiles on-site should be taken in order to minimize the noise,	Waste reduction, reuse, recycling and proper	All work sites / during	Construction Contractor	√			Waste Disposal Ordinance

EIA Ref	EM&A Ref	Recommended Mitigation Measures	Objectives of the Recommended Measures and Main Concerns to addressed	Location / Timing	Implementation Agent	Implementation Stages*			Relevant Legislation & Guidelines
						D	C	O	
		<p>generation of dust, pollution of water and visual impact. These measures include:</p> <ul style="list-style-type: none"> <li>• surface of stockpiled soil should be regularly wetted with water especially during dry season;</li> <li>• disturbance of stockpiled soil should be minimized;</li> <li>• stockpiled soil should be properly covered with tarpaulin especially when heavy rain storms are predicted;</li> <li>• stockpiling areas should be enclosed where space is available;</li> <li>• stockpiling location should be away from the water bodies; and</li> <li>• an independent surface water drainage system equipped with silt traps should be installed at the stockpiling area.</li> </ul>	disposal of waste	construction					ETWB TCW No. 19/2005
7.6.19	5.1.19	The identification of final disposal sites for C&D materials generated by the construction works will be considered during the detailed design stage of the Project when the volume and types of C&D materials can be more accurately estimated. The Public Fill Committee of CEDD should be consulted on designated outlets (e.g. public fill reception facility) for public fill, whilst EPD should	Waste reduction, reuse, recycling and proper disposal of waste	All work sites / during construction	Construction Contractor	√			Waste Disposal Ordinance ETWB TCW No. 19/2005, 34/2002 WBTC No. 12/2000

EIA Ref	EM&A Ref	Recommended Mitigation Measures	Objectives of the Recommended Measures and Main Concerns to addressed	Location / Timing	Implementation Agent	Implementation Stages*			Relevant Legislation & Guidelines
						D	C	O	
7.6.20	5.1.20	be consulted on landfills for C&D waste. The public fill to be disposed to public fill reception facilities must consist entirely of inert construction materials. Disposal of C&D waste to landfill must not have more than 50% by weight of inert material. The C&D waste delivered for landfill disposal should contain no free water and the liquid content should not exceed 70% by weight.  In order to avoid dust or odour impacts, any vehicle leaving a works area carrying C&D waste or public fill should have their load covered before leaving the construction site.	Waste reduction, reuse, recycling and proper disposal of waste	All work sites / during construction	Construction Contractor		√		Waste Disposal Ordinance ETWB TCW No. 19/2005 WBTC No. 19/2001
7.6.21	5.1.21	C&D materials should be disposed of at designated public fill reception facilities or landfills. Reuse of public fill materials at other construction projects is subject to the approval of the relevant project proponents, Engineer and/or other relevant authorities, such as LandsD, Pland, etc. Furthermore, unauthorized disposal of C&D materials in particular on private agricultural land is prohibited and may be subject to relevant enforcement and regulating actions. The Contractor shall refer and strictly follow the trip-ticket system for the disposal of C&D materials as stipulated in	Waste reduction, reuse, recycling and proper disposal of waste	All work sites / during construction	Construction Contractor		√		Waste Disposal Ordinance ETWB TCW No. 19/2005, 31/2004

EIA Ref	EM&A Ref	Recommended Mitigation Measures	Objectives of the Recommended Measures and Main Concerns to addressed	Location / Timing	Implementation Agent	Implementation Stages*			Relevant Legislation & Guidelines
						D	C	O	
7.6.22	5.1.22	<p>the ETWB TCW No. 31/2004.</p> <p><i>Bentonite</i></p> <p>Bentonite slurry used in the drilling works should be treated and recycled at the works area in Cheung Chau. Any bentonite that is not suitable for recycling should be suitably dewatered before disposed of at public fill reception facilities.</p>	Waste reduction, reuse, recycling and proper disposal of waste	All work sites / during construction	Construction Contractor	√			Waste Disposal Ordinance ETWB TCW No. 19/2005 WBTC No. 19/2001
7.6.23	5.1.23	<p><i>Chemical Waste</i></p> <p>Where the construction processes produce chemical waste, the Contractor must register with EPD as a chemical waste producer. Wastes classified as chemical wastes are listed in the Waste Disposal (Chemical Waste) (General) Regulation. These wastes are subject to stringent disposal routes. EPD requires information on the particulars of the waste generation processes including the types of waste produced, their location, quantities and generation rates. A nominated contact person must be registered with EPD. An updated list of licensed chemical waste collector can be obtained from EPD.</p>	Waste reduction, reuse, recycling and proper disposal of chemical waste	All work sites / during construction	Construction Contractor	√			Waste Disposal (Chemical Waste) (General) Regulation Code of Practice on the Packaging and Labelling and Storage of Chemical Waste
7.6.24	5.1.24	Storage, handling, transport and disposal of chemical	Waste reduction, reuse,	All work sites / during	Construction	√			Waste Disposal (Chemical Waste)

EIA Ref	EM&A Ref	Recommended Mitigation Measures	Objectives of the Recommended Measures and Main Concerns to addressed	Location / Timing	Implementation Agent	Implementation Stages*			Relevant Legislation & Guidelines
						D	C	O	
7.6.25	5.1.25	<p>waste should be arranged in accordance with the Code of Practice on the Packaging, Labelling and Storage of Chemical Wastes published by EPD, and should be collected by a licensed chemical waste collector.</p> <p>Suitable containers should be used for specific types of chemical wastes, containers should be properly labelled (English and Chinese in accordance with instructions prescribed in Schedule 2 of the Regulations), resistance to corrosion, stored safely and closely secure. Stored volume should not be kept more than 450 liters unless the specification has been approved by the EPD. Storage area should be enclosed by three sides by a wall, partition of fence that is at least 2 m height or height of tallest container with adequate ventilation and space.</p>	<p>recycling and proper disposal of chemical waste</p> <p>Waste reduction, reuse, recycling and proper disposal of chemical waste</p>	<p>construction</p> <p>All work sites / during construction</p>	<p>Contractor</p> <p>Construction Contractor</p>				<p>(General) Regulation Code of Practice on the Packaging and Labelling and Storage of Chemical Waste</p> <p>Waste Disposal (Chemical Waste) (General) Regulation Code of Practice on the Packaging and Labelling and Storage of Chemical Waste</p>
7.6.26	5.1.26	<p>Hard standing, impermeable surfaces draining via oil interceptors should be provided in works area compounds. Interceptors should be regularly emptied to prevent release of oils and grease into the surface water drainage system after accidental spillages. The interceptor should have a bypass to prevent flushing during periods of heavy rain. Oil and fuel bunkers should be banded and/or enclosed</p>	<p>Waste reduction, reuse, recycling and proper disposal of chemical waste</p>	<p>Work sites / During construction</p>	<p>Construction Contractor</p>				<p>Waste Disposal (Chemical Waste) (General) Regulation Code of Practice on the Packaging and Labelling and Storage of</p>

EIA Ref	EM&A Ref	Recommended Mitigation Measures	Objectives of the Recommended Measures and Main Concerns to addressed	Location / Timing	Implementation Agent	Implementation Stages*			Relevant Legislation & Guidelines
						D	C	O	
7.6.27	5.1.27	on three sides to prevent discharge due to accidental spillages or breaches of tanks. Bunding should be of sufficient capacity to accommodate 110% of the volume of the largest container or 20% of the total volume of waste, whichever is largest. Waste collected from any grease traps should be collected and disposed of by a licensed contractor.							Chemical Waste
		Lubricants, waste oils and other chemical wastes are likely to be generated during the maintenance of vehicles and mechanical equipment. Used lubricants should be collected and stored in individual containers which are fully labelled in English and Chinese and stored in a designated secure place. If possible, such waste should be sent to oil recycling companies, and the empty oil drums collected by appropriate companies for reuse or refill.	Waste reduction, reuse, recycling and proper disposal of chemical waste	All work sites / during construction	Construction Contractor	√			Waste Disposal (Chemical Waste) (General) Regulation Code of Practice on the Packaging and Labelling and Storage of Chemical Waste
7.6.28	5.1.28	The registered chemical waste producer (i.e. the contractor) has to arrange for the chemical waste to be collected by licensed collectors. The licensed collector should regularly take chemical waste to a licensed chemical waste treatment facility (such as the Chemical Waste Treatment Centre in Tsing Yi). A trip ticket system operates to control the movement of chemical wastes.	Waste reduction, reuse, recycling and proper disposal of chemical waste	All work sites / during construction	Construction Contractor	√			Waste Disposal (Chemical Waste) (General) Regulation Code of Practice on the Packaging and Labelling and Storage of Chemical Waste



EIA Ref	EM&A Ref	Recommended Mitigation Measures	Objectives of the Recommended Measures and Main Concerns to addressed	Location / Timing	Implementation Agent	Implementation Stages*			Relevant Legislation & Guidelines
						D	C	O	
7.6.29	5.1.29	No lubricants, oils, solvents or paint products should be allowed to discharge into water courses, either by direct discharge, or as contaminants carried in surface water runoff from the construction site.	Waste reduction, reuse, recycling and proper disposal of chemical waste	All work sites / during construction	Construction Contractor	√			Waste Disposal (Chemical Waste) (General) Regulation Code of Practice on the Packaging and Labelling and Storage of Chemical Waste
7.6.30	5.1.30	Chemical waste should be stored in the works compound at Cheung Chau, no chemical waste should be stored in the works site at Lantau.	To minimize impacts on Lantau South Country Park	The work site at Lantau / during construction	Construction Contractor	√			EIAO-TM
7.6.31	5.1.31	The Contractor should prepare an Emergency Contingency Plan (spill response plan) for the Project to contain and remove accidental spillage of drilling fluids, chemicals and all hazardous materials on-site including fuels at short notice and to prevent or to minimize the quantities of contaminants from entering the nearby water bodies and affecting the sensitive habitats. Details of the requirements are presented in <b>Chapter 3</b> of the EIA.	To minimize impacts from accidental spillage of drilling fluids and chemicals on-site	All work sites / during construction	Construction Contractor	√			EIAO-TM
		<i>General Works Waste</i>							

EIA Ref	EM&A Ref	Recommended Mitigation Measures	Objectives of the Recommended Measures and Main Concerns to addressed	Location / Timing	Implementation Agent	Implementation Stages*			Relevant Legislation & Guidelines
						D	C	O	
7.6.32	5.1.32	<i>Concrete Waste</i> Dry concrete waste (considered as public fill) should be sorted out from the other wastes and recycled for reuse or sorted out for disposal at designated public filling facilities.	Waste reduction, reuse, recycling and proper disposal of waste	All work sites / during construction	Construction Contractor	√			Waste Disposal Ordinance ETWB TCW No. 19/2005, 33/2002
7.6.33	5.1.33	<i>Wooden Materials</i> All wooden materials used on-site should be kept separate from other wastes to avoid damage and to facilitate reuse. Timber which cannot be reused should be sorted out from other waste and stored separately from all inert waste before being disposed of to landfill.	Waste reduction, reuse, recycling and proper disposal of waste	All work sites / during construction	Construction Contractor	√			Waste Disposal Ordinance ETWB TCW No. 19/2005, 33/2002
7.6.34	5.1.34	Reusable steel or concrete panel shutters, fencing and hoarding and signboard should be used as a preferred alternative to items made of wood, to minimise wastage of wood. Attention should be paid to WBTC No. 19/2001 - Metallic Site Hoardings and Signboards to reduce the amount of timber used on construction sites. Metallic alternatives to timber are readily available and should be used rather than new timber. Precast concrete units should be adopted wherever feasible to minimize the use of timber formwork.	Waste reduction, reuse, recycling and proper disposal of waste	All work sites / during construction	Construction Contractor	√			Waste Disposal Ordinance ETWB TCW No. 19/2005, 33/2002

EIA Ref	EM&A Ref	Recommended Mitigation Measures	Objectives of the Recommended Measures and Main Concerns to addressed	Location / Timing	Implementation Agent	Implementation Stages*			Relevant Legislation & Guidelines
						D	C	O	
7.6.35	5.1.35	Only waste material need be taken to a landfill. It should be separated from recyclable wood and steel materials. As for all waste types these materials should be reused on-site or other approved sites before disposal is considered as an option. Disposal to landfill should only be considered as a final option. Contractors are responsible for storage of re-useable materials on-site.	Waste reduction, reuse, recycling and proper disposal of waste	All work sites / during construction	Construction Contractor	√			Waste Disposal Ordinance ETWB TCW No. 19/2005, 33/2002
7.6.36	5.1.36	<i>Municipal Waste</i> General refuse generated on-site should be stored in enclosed bins or skips and collected separately from other construction and chemical wastes and disposed of at designated landfill. A temporary refuse collection point should be set up by the contractor to facilitate the collection of refuse by licensed contractors. The removal of waste from the site should be arranged on a daily or at least on every second day by the Contractor to minimise any potential odour impacts, minimise the presence of pests, vermin and other scavengers and prevent unsightly accumulation of waste.	Waste reduction, reuse, recycling and proper disposal of waste	All work sites / during construction	Construction Contractor	√			Waste Disposal Ordinance ETWB TCW No. 19/2005
7.6.37	5.1.37	For the works within Lantau South Country Park, the Contractor should ensure that all general refuse including food scraps and packaging materials generated by the workers are properly packed and removed from site daily at the end of each work shift.	To minimize impacts on Lantau South Country Park	The work site at Lantau / during construction	Construction Contractor	√			EIAO-TM

EIA Ref	EM&A Ref	Recommended Mitigation Measures	Objectives of the Recommended Measures and Main Concerns to addressed	Location / Timing	Implementation Agent	Implementation Stages*			Relevant Legislation & Guidelines
						D	C	O	
7.6.38	5.1.38	No refuse should be left in the works area at Lantau.  The recyclable component of the municipal waste generated by the workforce, such as aluminium cans, paper and cleansed plastic containers should be separated from other waste. Provision and collection of recycling bins for different types of recyclable waste should be set up by the Contractor. The contractor should also be responsible for arranging recycling companies to collect these materials.	Waste reduction, reuse, recycling and proper disposal of waste	All work sites / during construction	Construction Contractor		√		Waste Disposal Ordinance  ETWB TCW No. 19/2005
7.6.39	5.1.39	The burning of refuse on-site is prohibited under the Air Pollution Control Ordinance (APCO) (Cap.311).	Waste reduction, reuse, recycling and proper disposal of waste as well as air pollution control	All work sites / during construction	Construction Contractor		√		Waste Disposal Ordinance ETWB TCW No. 19/2005 Air Pollution Control Ordinance
<b>Waste – Operation Phase</b>									

\* D=Design, C=Construction, O=Operation  
 N/A Not applicable

Table A.5 Implementation Schedule of Construction Noise Mitigation Measures

EIA Ref	EM&A Ref	Recommended Mitigation Measures	Objectives of the Recommended Measures and Main Concerns to addressed	Location / Timing	Implementation Agent	Implementation Stages*			Relevant Legislation & Guidelines
						D	C	O	
<b>Noise - Construction Phase</b>									
<i>Level 1 Mitigation – Use of Quiet Plant</i>									
8.6.2	6.8.2	The quiet plant used in the construction noise calculation is shown in <b>Table 8.4</b> and <b>Appendix 8.1</b> of the EIA. The Contractor can propose other suitable alternative equipment with similar or lower sound power level.	To protect NSRs from noise during construction	All works site / during construction	Construction Contractor	√			Environmental Impact Assessment Ordinance Technical Memorandum on EIA Process
8.6.3	6.8.3	The use of quiet plant is considered to be the most effective ways of alleviating construction noise impact. The Contractor should use quiet plant with sound power level lower than that stipulated in the TM-GW as the Level 1 mitigation for construction noise.	To protect NSRs from noise during construction	All works site / during construction	Construction Contractor	√			Environmental Impact Assessment Ordinance Technical Memorandum on EIA Process
8.6.4	6.8.4	The use of mini or lower power rating equipment (e.g. mini excavator) should also be considered where practical. This technique would be feasible and practical at some locations given the limited space available for using large size construction equipment and the small scale works involved such as the land-based water main in Cheung Chau.	To protect NSRs from noise during construction	All works site / during construction	Construction Contractor	√			Environmental Impact Assessment Ordinance Technical Memorandum on EIA Process

EIA Ref	EM&A Ref	Recommended Mitigation Measures	Objectives of the Recommended Measures and Main Concerns to addressed	Location / Timing	Implementation Agent	Implementation Stages*			Relevant Legislation & Guidelines
						D	C	O	
8.6.5	6.8.5	The Contractor should take note of ETWB TCW No. 19/2005 – Environmental Management on Construction Sites which sets out the policy and procedures requiring contractors to, among others, adopt Quality Powered Mechanical Equipment (QPME).	To protect NSRs from noise during construction	All works site / during construction	Construction Contractor		√		Environmental Impact Assessment Ordinance Technical Memorandum on EIA Process ETWB TCW No. 19/2005
8.6.6 Table 8.4	6.8.6 Table 6.4	A list of quiet powered mechanical equipment (PME) recommended for use during construction phase is tabulated in <b>Table 8.4</b> of the EIA.	To protect NSRs from noise during construction	All works site / during construction	Construction Contractor		√		Environmental Impact Assessment Ordinance Technical Memorandum on EIA Process ETWB TCW No. 19/2005
8.6.8	6.8.8	<i>Level 2 Mitigation - Use of Temporary Noise Barriers</i> Since NSR 2 (as with most of the NSRs within the Project area) are typically low-rise village houses	To protect NSRs from noise during construction	The proposed launching site at Cheung Chau as	Construction Contractor		√		Environmental Impact Assessment Ordinance

EIA Ref	EM&A Ref	Recommended Mitigation Measures	Objectives of the Recommended Measures and Main Concerns to addressed	Location / Timing	Implementation Agent	Implementation Stages*			Relevant Legislation & Guidelines
						D	C	O	
8.6.9	6.8.9	of not more than 3 storeys (NSR 1 is one storey), it would be effective to have noise screening structures or temporary noise barriers purposely-built along the site boundary to provide additional protection to NSRs close to the construction site boundary. This could be in the form of purposely-built site hoarding constructed from appropriate materials with a minimum superficial density of 7 kg/m <sup>2</sup> . The noise barrier should have a vertical height of at least 4 m with a small cantilevered upper portion if necessary ensuring that the operating equipment can be shielded from the view of the NSRs. The temporary noise barrier should have no gaps or opening at joints. The Contractor should regularly inspect and maintain the noise barrier to ensure its effectiveness.	To protect NSRs from noise during construction	shown in Figure 8.2 of the EIA / during construction	Construction Contractor			√	Technical Memorandum on EIA Process
		For the construction works which have the potential to exceed the noise standards on nearby NSR and whose line of sight cannot be effectively blocked by the temporary noise barrier, movable (mobile) barriers should be provided. Movable barriers of at least 2.5 m height with a small cantilevered upper portion and skid footing can be located within a few meters of stationary plant (e.g. generator) and within about 5 m or more of a mobile equipment (e.g. excavator), such that the line of sight to the NSR is blocked by the barriers.		All works site for NSRs whose line of sight cannot be effectively blocked by the temporary noise barriers / during construction					Environmental Impact Assessment Ordinance Technical Memorandum on EIA Process

EIA Ref	EM&A Ref	Recommended Mitigation Measures	Objectives of the Recommended Measures and Main Concerns to addressed	Location / Timing	Implementation Agent	Implementation Stages*			Relevant Legislation & Guidelines
						D	C	O	
8.6.13	6.8.13	<p><i>Good Site Practices</i></p> <p>In general, potential construction noise impact can be minimised or avoided by imposing a combination of the following good site practices as mitigation measures:</p> <p>(a) Only well-maintained plant should be operated on-site and plant should be serviced regularly during the construction period.</p> <p>(b) Construction plant should be sited away from NSRs.</p> <p>(c) Machines and plant that may be in intermittent use should be shut down between works periods or should be throttled down to a minimum.</p> <p>(d) Equipment known to emit sound strongly in one direction should be orientated such that the noise is directed away from nearby NSRs.</p> <p>(e) Material stockpiles and other structures (such as site offices) should be effectively utilised to shield on-site construction activities.</p> <p>(f) The Contractor shall devise, arrange methods of working and carrying out the works in such manner as to minimise noise impacts on the surrounding environment, and shall provide experienced personnel with suitable training to ensure that these measures are implemented properly.</p> <p>(g) In the event that new schools are built near</p>	To protect NSRs from noise during construction	All works site / during construction	Construction Contractor		√		Environmental Impact Assessment Ordinance Technical Memorandum on EIA Process



EIA Ref	EM&A Ref	Recommended Mitigation Measures	Objectives of the Recommended Measures and Main Concerns to addressed	Location / Timing	Implementation Agent	Implementation Stages*			Relevant Legislation & Guidelines
						D	C	O	
8.6.16	6.8.16	<p>the works area, the Contractor should minimize construction noise exposure to the schools (especially during examination periods). The Contractor should liaise with the school and the Examination Authority to ascertain the exact dates and times of all examination periods during the course of the contract and to avoid noisy activities during these periods.</p> <p><i>Public Relations Strategy</i></p> <p>To maintain an effective communication channel with the public, a 24-hour hotline system should be established by the project office for the Contractor to receive any enquiry and complaint lodged by the public in respect of the Project. Upon receipt of enquiry / complaint, the Contractor (or its Environmental Team) should investigate the causes of the incident and take the appropriate action to rectify the situation. Periodic newsletters, information leaflets, notices or other means of communication should be provided to the affected villages, communities, and residents advising them the current progress, the schedule of works in future, the potential environmental impacts arising from the works and the corresponding mitigation measures. It is considered that such a close relation between the local communities and the project site office could ensure speedy resolution of any</p>	To promote good public relation and maintain effective communication during construction	All works site / during construction	Project Office (Engineer) & Construction Contractor	√			Environmental Impact Assessment Ordinance Technical Memorandum on EIA Process

EIA Ref	EM&A Ref	Recommended Mitigation Measures	Objectives of the Recommended Measures and Main Concerns to addressed	Location / Timing	Implementation Agent	Implementation Stages*			Relevant Legislation & Guidelines
						D	C	O	
8.6.19	6.8.17	environmental non-compliance and maintain an environmental standard acceptable to the local communities during construction.  All the above construction noise mitigation measures should be implemented by the Contractor during the construction phase of the works. The location of the temporary noise barriers (including any mobile barriers) should be further reviewed by the Contractor during the construction stage based on the latest construction programme and contemporary conditions, including any changes with respect to NSRs. The Contractor should design, construct, operate and maintain the mitigation measures throughout the construction stage and as required by the Engineer. Before commencement of the works, the Contractor should submit to the Engineer for approval (as part of their method statement) details of the mitigation measures to be employed under the works. The Contractor's proposed mitigation measures should also be certified by the ET Leader and verified by the IEC to ensure the intended noise reduction effectiveness can be achieved.	To protect NSRs from noise during construction and to ensure the Contractor will properly implement the mitigation measures	All works site / during construction	Construction Contractor		√		Environmental Impact Assessment Ordinance  Technical Memorandum on EIA Process

\* D=Design, C=Construction, O=Operation  
 N/A Not applicable