



JOB No.: TCS00694/13

**AGREEMENT NO. CE 45/2008 (CE)
LIANTANG/HEUNG YUEN WAI
BOUNDARY CONTROL POINT AND ASSOCIATED WORKS**

**MONITORING REPORT FOR WETLAND
COMPENSATION AREA (No.12) – SEPTEMBER 2021**

**PREPARED FOR
CIVIL ENGINEERING AND DEVELOPMENT DEPARTMENT**

Date	Reference No.	Prepared By	Certified By
27 October 2021	TCS00694/13/600/R2691v2		
		Nicola Hon (Environmental Consultant)	Tam Tak Wing (Environmental Team Leader)

Version	Date	Remarks
1	21 October 2021	First Submission
2	27 October 2021	Amended according to the IEC's comments



Member of the Surbana Jurong Group

local people
global experience

Our ref: 7076192/L27987/AW/CL/rw

3 November 2021

AECOM
8/F, Grand Central Plaza, Tower 2
138 Shatin Rural Committee Road
Shatin, N.T.

By Email & Post

Attention: Mr Eddie LUK

Dear Sir

**Agreement No. CE 45/2008 (CE)
Liantang/Heung Yuen Wai Boundary Control Point and Associated Works
Independent Environmental Checker – Investigation
Monitoring Report for Wetland Compensation Area (No. 12) – September 2021**

With reference to the Monitoring Report for Wetland Compensation Area (No. 11) for September 2021 (Version 2) certified by the ET Leader and received by IEC on 2 November 2021, please note that we have no adverse comments on the captioned submission. We herewith verify the captioned submission in accordance with Section 8.3.2.3 of the EM&A Manual.

Thank you for your attention and please do not hesitate to contact the undersigned on tel. 3995-8120 or by email to antony.wong@smec.com; or our Mr Charls LIANG on tel. 3995-8128 or by email to charls.liang@smec.com.

Yours faithfully

Antony WONG
Independent Environmental Checker

cc	CEDD/BCP	-	Mr LU Pei Yu / Ms Tiffany LAW	by fax: 3547 1659
	AECOM	-	Mr Pat LAM / Mr Anthony WONG	by email
	CCKJV	-	Mr Vincent CHAN	by email
	AUES	-	Mr TW TAM	by email

SMEC ASIA LIMITED
27/F Ford Glory Plaza, 37-39 Wing Hong Street
Cheung Sha Wan, Kowloon, Hong Kong
T +852 3995 8100
F +852 3995 8101
E hongkong@smec.com
W www.smec.com



Table of Content

1. Introduction.....	2
1.1 General.....	2
2. Monitoring Requirement.....	3
2.1 Requirement.....	3
2.2 Ecological Monitoring.....	3
2.3 Water Quality Monitoring.....	5
3. Monitoring Results.....	9
3.1 Result of Ecological Monitoring.....	9
3.2 Result of water Quality.....	11
3.3 Site Inspection.....	13
3.4 Conclusion.....	13

LIST OF TABLES

TABLE 2-1	SUMMARY OF MONITORING IN IMPLEMENTATION AND ESTABLISHMENT STAGE
TABLE 2-2	ECOLOGICAL PERFORMANCE LIMITS AND CONTINGENCY PLAN
TABLE 2-3	WATER QUALITY MONITORING EQUIPMENT
TABLE 2-4	CHEMICAL DETERMINATION AND REPORTING LIMIT
TABLE 2-5	WATER QUALITY PERFORMANCE LIMITS AND CONTINGENCY PLAN
TABLE 3-1	SUMMARY OF THE VEGETATION MONITORING IN THE SEASONAL WATER LEVEL FLUCTUATION AREA
TABLE 3-2	DRAGONFLY SPECIES RECORDED WITHIN THE WETLAND COMPENSATION AREA DURING THE MONITORING MONTH
TABLE 3-3	BUTTERFLY SPECIES RECORDED WITHIN THE WETLAND COMPENSATION AREA DURING THE MONITORING MONTH
TABLE 3-4	SUMMARY OF WATER QUALITY MONITORING RESULTS (IN-SITU MEASUREMENTS)
TABLE 3-5	SUMMARY OF WATER QUALITY MONITORING RESULTS (LABORATORY MEASUREMENTS)
TABLE 3-6	SUMMARY AREA OF WATER COVERAGE OF EACH POND (WET SEASON)

LIST OF APPENDICES

APPENDIX A	LAYOUT PLAN OF THE WETLAND COMPENSATION AREA
APPENDIX B	CALIBRATION CERTIFICATE OF MONITORING EQUIPMENT
APPENDIX C	WATER QUALITY MONITORING DATA
APPENDIX D	CONVERSION SHEET FOR AREA OF WATER COVERAGE IN EACH POND
APPENDIX E	PHOTOGRAPHIC RECORDS
APPENDIX F	OVERVIEW OF OPEN WATER AREA IN EACH POND
APPENDIX G	DETAILS RESULTS OF VEGETATION MONITORING
APPENDIX H	THE GENERAL VIEW OF THE QUADRAT

1. INTRODUCTION

1.1 GENERAL

- 1.1.1 The “Liantang/Heung Yuen Wai Boundary Control Point and Associated Works Project” (hereinafter referred to as “the Project”) comprises a new Boundary Control Point (BCP) proposed at Liantang/Heung Yuen Wai (LT/HYW), its connecting road and other associated works. According to the EIA Report, Section 9.7.6 and Section 9.8, the wetland habitat to be lost as a result of this Project is identified as freshwater wetland (mainly the abandoned wet agricultural land) only and located at Loi Tung, Wo Keng Shan and Nga Yiu Ha areas. On the basis of literature review and field surveys, the abandoned wet agricultural land found within the Assessment Area was found only in moderate to low ecological value.
- 1.1.2 Nonetheless, in view of its ecological potential and the ecological significance of cumulative loss of wetland, the loss of freshwater wetland is proposed to be compensated by creation of a freshwater wetland. Taking into consideration the existing situation of the habitats affected, the wetland created would be targeted for wetland communities in general (e.g. wetland associated insects and amphibians) instead of wetland-dependent birds in particular. CEDD discussed with EPD, AFCD and DSD, Wetland Compensation Area (WCA) is provided near the affected habitat areas for the purpose of on-site mitigation. Finally, the low-lying area contiguous with River Ganges near Ping Yeung Interchange proposed as a location of compensation wetland; boundaries and conceptual layout plan of the WCA respectively refer to **Figure 9.27** and **9.28** of the Habitat Creation and Management Plan (Revision 3) (hereinafter named “HCMP”).
- 1.1.3 According to the approved HCMP, ecological monitoring at implementation and establishment periods should be conducted to cover the ecological attributes. Implementation of the wetland should commence within the construction phase after completion of the construction works at Ping Yeung Section. Prior to commencement of construction, an ecological baseline monitoring was conducted on the proposed wetland site by the Engineer on 25th August 2015, in which the findings would provide a baseline for evaluation of the success for the establishment of the wetland (details refer to S.4.2 of the approved HCMP).
- 1.1.4 Monitoring of WCA should be conducted at implementation and establishment stages. As advised by the Contractor, the implementation stage included construction of wetland was completed in September 2020. Subsequent monitoring at establishment stage would be conducted for one year duration. After establishment stage, AFCD will be responsible of maintenance and the monitoring works.
- 1.1.5 The establishment stage of wetland was commenced on 1st October 2020. This is the **12th** Monitoring Report for the Wetland Compensation Area presents the findings of the wetland monitoring for Reporting Month of **September 2021**. This is the last monitoring report for the Wetland Compensation Area according to the approved HCMP.

2. MONITORING REQUIREMENT

2.1 REQUIREMENT

- 2.1.1 The requirements of monitoring of ecological attributes and water quality are presented below and they are basically in accordance with the approved HCMP.
- 2.1.2 The monitoring was conducted by the Environmental Team (ET) and supervised by a qualified Project ecologist as a member of the ET in accordance with Section 8.3.2.3 of the EM&A Manual and Section 5.3.2.4 of the EM&A Programme (rev. 07) approved by EPD. Monitoring Parameters and frequency of the implementation and establishment stage are summarized **Table 2-1**.

Table 2-1 Summary of Monitoring in Implementation and Establishment Stage

Monitoring Parameters	Frequency	Implementation Stage	Establishment Stage
Site Inspection	Weekly	✓	✓
Monitoring of Water level in the ponds	Monthly		✓
Monitoring of Water Quality	Once per month of in-situ parameters measurement		✓
	Once every six months of sample collection and laboratory testing analysis		✓
Monitoring of Vegetation Cover	Every six months		✓
Monitoring of Dragonflies	Twice per month between April and August; and Once per month between September and March		✓
Monitoring of Butterflies	Once per month		✓
Amphibians	Once per month between March and October; and Once every two Months between November and February		✓

2.2 ECOLOGICAL MONITORING

METHODOLOGY

Monitoring of Vegetation Cover

- 2.2.1 Detailed floristic surveys in the permanent open water as well as the area with fluctuate water level should be conducted for each of the wetland pond at a six monthly intervals, i.e., at the end of the wet season (September) and the end of the dry season (March). Quadrat sampling should be conducted at two location within each pond, i.e. at permanent open water designed last during dry season (wet zone) and on the seasonal water level fluctuation area (semi wet-dry zone); in which a single 2mx2m quadrat should be undertaken at a selected location away from any water inlet and outlet of the pond, and all plant species within the quadrat should be identified to species-level with their respective densities estimated.
- 2.2.2 On the other hand, the vegetation coverage by each species, as well as the percentage cover of bare ground and leaf litter cover (for the quadrat placed on area with fluctuate water level only), should be measured. Finally, the tallest height of each plant species should be measured to nearest cm; and presence of any rare or protected species should be identified.
- 2.2.3 The location of the quadrats should be determined on-site during the commencement of the vegetation monitoring, and to be marked by pole as such to facilitate the future monitoring and evaluation.

Monitoring of Dragonflies and Butterflies

- 2.2.4 Direct Observation and active searching along a number of fixed survey transects should be undertaken to monitor the dragonflies and butterflies within the constructed wetland. All dragonfly species observed should be identified and counted, and presence of dragonfly exuviae should also be inspected along the water edge wherever feasible so as to monitor qualitatively the breeding success of this fauna group. On the other hand, all butterfly species should be identified and numbers estimated quantitatively or semi-quantitatively.
- 2.2.5 The survey should be conducted during the middle of the day to coincide with the peak flight time for these species. The monitoring for dragonfly and butterfly should be undertaken on a monthly basis, but would be bi-monthly monitoring (i.e., twice per month) for dragonfly during the peak period of dragonfly emergency in April to August. The proposed transect routes are shown in the *Appendix A*.

Monitoring of Amphibians

- 2.2.6 As stated in the HCMP, breeding and development of larvae will be undertaken to monitor the amphibian activities within the constructed wetland; and depends on the site condition during the time of the survey, deployment of dip net and bottle-traps may also be undertaken to survey the presence of larvae in the water body.
- 2.2.7 The amphibian survey will be undertaken by observation and active searching in potential refuges, and primarily follow the fixed transect as proposed for the dragonfly/butterfly monitoring in each of the wetland pond. A walk through survey through the embankment and water edge of each pond will also be undertake whenever feasible without causing severe trampling of the planted vegetation.
- 2.2.8 The above monitoring will be conducted during the day-time on a monthly during March to October and on a bi-monthly during November to February. Furthermore, night time amphibian monitoring during the establishment phase of the constructed wetland, which has not been required in the HCMP but instructed by the Contractor, will also be undertaken by active searching and auditory detection in the monitoring months to supplement the day time monitoring work.

PERFORMANCE LIMITS AND ACTION PLANS

- 2.2.9 **Table 2-2** shows the ecological performance (i.e. Action Level (AL) and Limit Level (LL)) and the corresponding Contingency Plans defined in the Table 4.5 of the approved HCMP. The proposed plans will be reviewed and updated on a quarterly basis by the ER based on the monitoring results and situation of the site in future. Any proposed changes, if necessary, would be agreed with ET, Ecologist and IEC and submitted to relevant Authority for approval.

Table 2-2 Ecological Performance Limits and Contingency Plan

Parameters	Action Level	Limit Level	Action
Vegetation in permanent open water designed last during dry season	Area >10%	Area >20%	<ul style="list-style-type: none"> AL: Discuss among ETL, Ecologist, IEC, ER and the Contractor to identify and review the problem. Action plan for the limit level exceedance should be implemented in case further deterioration is expected. LL: The Contractor will be responsible to remove the vegetation.
Vegetation cover on the seasonal water level fluctuation area	Area <60%	Area <40%	<ul style="list-style-type: none"> AL: Double the monitoring frequency. Discuss among ETL, Ecologist, IEC, ER and the Contractor to identify and review the problem. Action plan for the limit level exceedance should be implemented in case further deterioration is expected. LL: Discuss among ETL, Ecologist, IEC, ER and the Contractor to identify and review the problem, in particular the species of planting. The Contractor will be responsible to

Parameters	Action Level	Limit Level	Action
			undertake supplemental planting.
Monitoring of Dragonflies	Species identified in the baseline monitoring* cannot be found in two successive monitoring periods	Species identified in the baseline monitoring* cannot be found in four successive monitoring periods	<ul style="list-style-type: none"> • AL: Double the monitoring frequency. Discuss among ETL, Ecologist, IEC, ER and the Contractor to identify and review the problem. Action plan for the limit level exceedance should be implemented in case the problem is likely due to the Project works or the design. • LL: Discuss among ETL, Ecologist, IEC, ER and the Contractor to identify and review the problem. ER/The Contractor to provide feasible mitigation measures in case the problem was due to the Project works. If necessary, ER to review the design and the Contractor to provide necessary modification.
Monitoring of Butterflies	Species identified in the baseline monitoring** cannot be found in two successive monitoring periods	Species identified in the baseline Monitoring** cannot be found in four successive monitoring periods	<ul style="list-style-type: none"> • AL: Double the monitoring frequency. Discuss among ETL, Ecologist, IEC, ER and the Contractor to identify and review the problem. Action plan for the limit level exceedance should be implemented in case the problem is likely due to the Project works or the design. • LL: Discuss among ETL, Ecologist, IEC, ER and the Contractor to identify and review the problem. ER/The Contractor to provide feasible mitigation measures in case the problem was due to the Project works. If necessary, ER to review the design and the Contractor to provide necessary modification.
Monitoring of Amphibians	Not observed	Not observed in two successive monitoring periods	<ul style="list-style-type: none"> • AL: Double the monitoring frequency. Discuss among ETL, Ecologist, IEC, ER and the Contractor to identify and review the problem. Action plan for the limit level exceedance should be implemented in case the problem is likely due to the Project works or the design. • LL: Discuss among ETL, Ecologist, IEC, ER and the Contractor to identify and review the problem. ER/The Contractor to provide feasible mitigation measures in case the problem was due to the Project works. If necessary, ER to review the design and the Contractor to provide necessary modification.

* Targeted dragonfly species: Blue Dasher *Brachydiplax chalybea flavovittata*, Common Red Skimmer *Orthetrum pruinosum neglectum*, Wandering Glider *Pantala flavescens*, Pied Skimmer *Pseudothemis zonata* and Crimson Dropwing *Trithemis aurora*

** Targeted butterfly species: Common Mormon *Papilio polytes polytes*, Common Grass Yellow *Eurema hecabe hecabe*, Angled Castor *Ariadne ariadne alterna*, Great Egg-fly *Hypolimnas bolina kezia*, Common Sailer *Neptis hylas hylas*, Common Sergeant *Athyma perius perius* and Red Ring Skirt *Hestina assimilis assimilis*

2.3 WATER QUALITY MONITORING

REQUIREMENT

2.3.1 As stated in the approved HCMP, water level at the centre and in-situ water quality measurement in each pond will be performed once per month. As instructed by the Contractor, additional in-situ water quality measurement/ water samples at the catchpits adjacent to the ponds should be conducted as well. Parameters of in-situ measurement include:

- Water level in the ponds
- Dissolved Oxygen (DO)
- Temperature
- pH
- Turbidity

2.3.2 In addition, every six months (end of the wet season, in September, and end of the dry season, in March) water samples should be collected at each pond and the following parameters should be tested by a HOKLAS laboratory:

- Ammoniacal nitrogen
- Biochemical oxygen demand
- Total oxidized nitrogen
- Total phosphorus
- Total reactive phosphorus (orthophosphate)

MONITORING EQUIPMENT

2.3.3 Water quality monitoring equipment used in the monitoring is listed in *Table 2-3*. All water quality monitoring equipment should be calibrated by HOKLAS accredited laboratory of three month intervals. The calibration certificates of monitoring equipment used for the monitoring in the Reporting Period are attached in *Appendix B*.

Table 2-3 Water Quality Monitoring Equipment

Equipment	Model
Depth board at the centre of the pond permanently installed in the wetland	Reading of the depth board at the centre of the pond
Thermometer & DO meter	YSI Professional DSS
pH meter	YSI Professional DSS
Turbidimeter	YSI Professional DSS
Sample Container	High density polythene bottles (provided by laboratory)
Storage Container	‘Willow’ 33-liter plastic cool box with ice pad

IN-SITU MEASUREMENT

Water depth Measurement

2.3.4 Monitoring of water depth should be conducted at centre of the pond. Since the access to the centre of the pond is unavailable due to safety concern, to facilitate the measurement of water level, a depth board was permanently installed at the centre of each pond and water level measurement should be taken by reading the depth board.

DO Measurement

2.3.5 YSI Professional DSS/ DO measuring instruments were portable and weatherproof. The equipment contained a membrane electrode with automatic temperature compensation. The equipment had a sensor and direct current (DC) power source and was capable of measuring:

- A DO level in the range of 0 – 20 mg/L and 0 – 200% saturation; and
- A temperature of 0 – 45 degree Celsius.

Turbidity Measurement

2.3.6 YSI Professional DSS/ turbidity measuring instruments were portable and weatherproof with DC power source, and had a photoelectric sensor capable of measuring turbidity level between 0–1000 NTU.

pH Measurement

2.3.7 YSI Professional DSS/ a portable pH meter capable of measuring a range between 0.0 and 14.0 was used to measure pH under the specified conditions according to the APHA Standard Methods.

2.3.8 All in-situ measurement equipment such as DO measuring instruments, turbidity measuring instruments and A portable pH meter, would be calibrated by HOKLAS accredited laboratory at three month intervals.

LABORATORY ANALYSIS

2.3.9 Chemical determination of all water samples were carried out by ALS Technichem (HK) Pty Ltd with the methodologies summarized in **Table 2-4**. The determination would be started within 24 hours of collection of water samples.

Table 2-4 Chemical Determination and Reporting Limit

Analyte Description	Method Reference	Report Limit (mg/L)
Ammoniacal nitrogen	APHA 4500NH3: G	0.01
Biochemical oxygen demand	APHA 5210B	2
Total oxidized nitrogen	APHA 4500P: J APHA4500NO3: I	0.01
Total phosphorus	APHA 4500P: J	0.01
Total reactive phosphorus (orthophosphate)	APHA 4500P: B&F	0.01

MONITORING PROCEDURE

- 2.3.10 Before in-situ measurement or water sampling, general information such as the date and time of sampling, weather condition as well as the personnel responsible for the monitoring would be recorded on the field data sheet.
- 2.3.11 Since the access to the centre of the pond was unavailable, at each pond measurements of water level would be taken by reading the depth board permanently installed in the wetland. A pair of high power binocular would be used where necessary.
- 2.3.12 The access to the centre of the pond is unavailable, due to safety concerns, water samples would be taken in a bucket to conduct in-situ measurement. At each pond, water sample would be collected at an accessible and safe location (such as on the balancing pipe at each pond). An extendable stick connected with and self-made sampling buckets would be used to collect the water samples at about 0.5m below surface gently.
- 2.3.13 For water samples for laboratory analysis, the sample container would be rinsed with a portion of the water sample. The collected water sample would be transferred to the high-density polythene bottles as provided by the laboratory, labeled with a unique sample number and sealed with a screw cap.
- 2.3.14 Water samples for laboratory measurement of chemical parameters would be collected in the preserved high density polythene bottles provided by the laboratory, packed in ice (cooled to 4 °C without being frozen), and delivered to the laboratory in the same day as the samples were collected.
- 2.3.15 Analysis of chemical parameters should be carried out in a HOKLAS accredited laboratory - ALS Technichem (HK) Pty Ltd. Sufficient water samples should be collected at the ponds for carrying out the laboratory determination. The determination work should start within 24 hours after collection of the water samples.

PERFORMANCE LIMITS AND ACTION PLANS

2.3.16 **Table 2-5** shows the proposed Wetland Water Quality Performance Limits and the corresponding Contingency Plans. The proposed plans will be reviewed and updated on a quarterly basis by the ER based on the monitoring results and situation of the site in future. Any proposed changes, if necessary, would be agreed with ET, Ecologist and IEC and submitted to relevant Authority for approval.

Table 2-5 Water Quality Performance Limits and Contingency Plan

Parameters	Action Level	Limit Level	Action
Flooding/ storm damage	NA	NA	Discuss among ETL, Ecologist, IEC, ER and the Contractor to damage review and determine damage. If necessary, ER to review design and agree mitigation measures with ETL, Ecologist and IEC, and the Contractor to undertake repairs/modifications.

Parameters	Action Level	Limit Level	Action
Area of water coverage in wet season	<50%	Water in one of the ponds is isolated	<ul style="list-style-type: none"> AL: Double the monitoring frequency. Discuss among ETL, Ecologist, IEC, ER to identify and review the problem. Action plan for limit level exceedance should be implemented in case further deterioration is expected. LL: Discuss among ETL, Ecologist, IEC, ER to identify and review the problem. If necessary, ER to review design and agree on mitigation measures with ETL, Ecologist and IEC, and the Contractor to undertake repairs/ medication to establish linkage for all water ponds.
Area of water coverage in dry season	<10%	Water depth in one of the ponds <100mm	
pH	pH value outside 6.0–8.5	pH value outside 5.5–9.0	<ul style="list-style-type: none"> AL: Double the monitoring frequency. Discuss among ETL, Ecologist, IEC, ER to identify and review the problem. Action plan for limit level exceedance should be implemented in case further deterioration is expected. LL: Discuss among ETL, Ecologist, IEC, ER to identify and review the problem and necessary agree on mitigation measures. The Contractor will be responsible to undertake repairs/ medication to resume the water quality.
Dissolved oxygen	≤ 2 mg/L	≤ 1 mg/L	
Turbidity	According to the reference documents, turbidity is not a key parameter, it is for reference only and no action level is set.		
Biological Oxygen Demand (BOD)	According to the reference documents, BOD is not a key parameter, it is for reference only and no action level is set.		
Ammoniacal nitrogen	> 3 mg/L	> 6 mg/L	<ul style="list-style-type: none"> AL: Double the monitoring frequency. Discuss among ETL, Ecologist, IEC, ER to identify and review the problem. Action plan for limit level exceedance should be implemented in case further deterioration is expected. LL: Discuss among ETL, Ecologist, IEC, ER to identify and review the problem. If necessary, ER to review design and agree on mitigation measures with ETL, Ecologist and IEC, and the Contractor to undertake repairs/ medication to establish linkage for all water ponds.
Total oxidized nitrogen	> 5 mg/L	> 10 mg/L	
Total phosphorus	> 5 mg/L	> 10 mg/L	
Total reactive phosphorus (orthophosphate)	> 5 mg/L	> 10 mg/L	

3. MONITORING RESULTS

3.1 RESULT OF ECOLOGICAL MONITORING

Monitoring of Vegetation Cover

- 3.1.1 Monitoring of vegetation cover at the end of the wet season, i.e., at the reporting month of September, has been undertaken in Ponds A to G on **30th September 2021**. However, placement of quadrats in “permanent open water designed last during dry season”, i.e., the “wet zone” +mPD 9.5 defined in Table 3.1 of the HCMP, was found to be infeasible because the water level of the pond was ranged from + mPD 10.6 to 11.1 during the time of monitoring. Nonetheless, since floating plant within this wet zone only be noted around the meter pole in Pond G in the whole constructed wetland system, it is believed the action and limit level set for this monitoring parameters, i.e., area with >10% or >20% vegetation cover at +mPD 9.5, would not be triggered. An overview of the open water area in each of the pond is shown in **Appendix F**.
- 3.1.2 Detail findings of the monitoring at the “seasonal water level fluctuation area”, i.e., the semi-dry zone ranged from +mPD 9.5 to +mPD 11.5 as defined in Table 3.1 of the HCMP, is presented in **Appendix G**, with the general view of the quadrat shown in **Appendix H**. A summary is shown in the following table.

Table 3-1 Summary of the Vegetation Monitoring in the Seasonal Water Level Fluctuation Area

Parameter	Pond Ref.							Mean Value
	A	B	C	D	E	F	G	
Water level reading (m)	3.05	3.08	3.05	3.1	3.1	3.0	3.0	-
Total no. of species	6	12	7	11	9	14	9	~9.7
Coverage of bare ground (%)	40	20	60	30	70	30	20	~38.6
Coverage of boulder (%)	35	35	15	35	0	40	15	~25.0
Coverage of leaf litter (%)	0	30	0	3	0	3	6	~6
Coverage of vegetation as a whole of the quadrat (%) *	70	40	35	45	30	60	95	~53.6
Coverage of vegetation – exclude area occupied by boulder and unavailable for planting (%)	100	61.5	41.2	69.2	30	100	100	~71.7

*vertical projection of all the foliage of plant located within the quadrat

- 3.1.3 It should be noted that the placement of boulders within the water fluctuation zone of all of the ponds has been re-arranged during the planting/replanting/re-instatement work undertaken during the wet season 2021, and disregard the new planting of wetland plants around the water edge, the vegetation within the quadrat of Pond B, C and D has been severely disturbed from the previous rainstorm.
- 3.1.4 Nonetheless, despite the mean % of the vegetation coverage in the seasonal water level fluctuation area across all of the wetland ponds is lower than 60%, when excluding the area occupied by boulders and unavailable for the planting and/or establishment of vegetation, the mean vegetation cover in the seasonal water level fluctuation area would be 71.7%, and neither the action nor limit level of this monitoring parameter have been triggered in the monitoring month.

Monitoring of Dragonflies and Butterflies

- 3.1.5 Monitoring of Dragonflies was undertaken within the WCA on **17th September 2021**. The weather was fine and sunny during the time of monitoring.

Dragonflies

- 3.1.6 A total of 9 dragonfly and 2 damselfly species, including the target species Wandering Glider and Crimson Dropwing have been recorded during the reporting month, as such the action level have not been triggered. On the other hand, exuviae have not been found within the WCA. The dragonfly

species recorded during the monitoring are presented in *Table 3-2*.

Table 3-2 Dragonfly Species Recorded within the Wetland Compensation Area during the Monitoring Month

Common Name	Scientific Name	Chinese Name	Reference Species*	Conservation Status#	Abundance
Blue Dasher	<i>Brachydiplax chalybea flavovittata</i>	藍額疏脈蜻	Y	C	0
Common Red Skimmer	<i>Orthetrum pruinosum neglectum</i>	赤褐灰蜻	Y	A	0
Wandering Glider	<i>Pantia flavescens</i>	黃蜻	Y	A	3
Pied Skimmer	<i>Pseudothemis zonata</i>	玉帶蜻	Y	C	0
Crimson Dropwing	<i>Trithemis aurora</i>	曉褐蜻	Y	A	14
Variigated Flutterer	<i>Rhyothemis variegata</i>	斑麗翅蜻	N	C	1
Asian Amberwing	<i>Brachythemis contaminata</i>	黃翅蜻	N	A	1
Pale-spotted Emperor	<i>Anax guttatus</i>	斑偉蜓	N	C	1
Russet Percher	<i>Neurothemis fulvia</i>	網脈蜻	N	C	1
Common Flangetail	<i>Ictinogomphus pertinax</i>	霸王葉春蜓	N	C	2
Crimson Darter	<i>Crocothemis servilia servilia</i>	紅蜻	N	A	2
Green Skimmer	<i>Orthetrum sabina sabina</i>	狹腹灰蜻	N	A	1
Yellow Featherlegs	<i>Copera marginipes</i>	黃狹扇螳	N	A	2
Orange-tailed Sprite	<i>Ceriagrion auranticum ryukyuanum</i>	翠胸黃螳	N	A	3
Total no. of species recorded					11

* Species recorded during the baseline monitoring and referenced for in the contingency plan (Table 4-5 of the HCMP)

from AFCD's Biodiversity Database : A – abundant, C – common

Butterfly

- 3.1.7 Monitoring of butterfly was undertaken within the WCA on **30th September 2021**. A total of 16 butterfly species were recorded during the monitoring, including four target species, i.e., Common Grass Yellow, Common Mormon, Great Egg-fly and Common Sailor, as such the action level have not been triggered. Nonetheless, only a single or few individuals of each species has been recorded during the monitoring. The butterfly species recorded during the monitoring are presented in *Table 3-3*.

Table 3-3 Butterfly Species Recorded within the Wetland Compensation Area during the Monitoring Month

Common Name	Scientific Name	Chinese Name	Reference Species*	Conservation Status#	Abundance [^]
Common Mormon	<i>Papilio polytes polytes</i>	玉帶鳳蝶	Y	VC	+
Common Grass Yellow	<i>Eurema hecabe hecabe</i>	寬邊黃粉蝶	Y	VC	++
Angled Castor	<i>Ariadne ariadne alterna</i>	波蚨蝶	Y	C	Nil
Great Egg-fly	<i>Hypolimnas bolina kezia</i>	幻紫斑蚨蝶	Y	VC	+
Common Sailor	<i>Neptis hylas hylas</i>	中環蚨蝶	Y	VC	+
Common Sergeant	<i>Athyma perius perius</i>	玄珠帶蚨蝶	Y	UC	Nil
Red Ring Skirt	<i>Hestina assimilis assimilis</i>	黑脈蚨蝶	Y	C	Nil

Common Name	Scientific Name	Chinese Name	Reference Species*	Conservation Status#	Abundance^
Lemon Emigrant	<i>Catopsilla Pomona</i>	遷粉蝶	N	C	+
Formosan Swift	<i>Borbo cinnara</i>	杻弄蝶	N	C	+
Dark Cerulean	<i>Jamides bochus bochus</i>	雅灰蝶	N	C	++
Dark-brand Bush Brown	<i>Mycalesis mineus mineus</i>	小眉眼蝶	N	VC	+
Blue-spotted Crow	<i>Euploea midamus</i>	藍點紫斑蝶	N	VC	+
Pale Grass Blue	<i>Pseudozizeeria maha serica</i>	酢漿灰蝶	N	VC	+
Indian Cabbage White	<i>Pieris candidia</i>	東方菜粉蝶	N	VC	+
Common bluebottle	<i>Graphium sarpedon,</i>	青鳳蝶	N	VC	+
Lemon Pansy	<i>Junonia lemonias lemonias</i>	蛇眼蛺蝶	N	C	++
Peacock Pansy	<i>Junonia Almana</i>	美眼蛺蝶	N	C	+
Three-spot Grass Yellow	<i>Eurema blanda</i>	槩黃粉蝶	N	C	+
Grass Demon	<i>Udaspes folus</i>	薑弄蝶	N	R	+
Total no. of species recorded					16

* Species recorded during the baseline monitoring and referenced for in the contingency plan (Table 4-5 of the HCMP)

from AFCD's Biodiversity Database : : R – Rare, UC – Uncommon, C – Common, VC – Very Common

^Relative Abundance: + rare, ++ infrequent, +++ common, +++++ very common

Monitoring of Amphibian

- 3.1.8 Day-time and night-time monitoring of amphibian were undertaken within the WCA on **30th September 2021**. Including the sightings made during the dragonfly monitoring of the month, 3 amphibian species were recorded in the reporting month - include a total of 2 sightings of Günther's Frog *Sylvirana guentheri* and 2 sightings of Chinese Bullfrog *Hoplobatrachus rugulosus* in the daytime monitoring, as well as 1 sighting of the Günther's Frog and Chinese Bullfrog at night time. On the other hand, vocal calls of Brown Tree Frog *Polypedates megacephalus* has also recorded during the night time monitoring. On the other hand, no records of juvenile or larvae have not been made during the sweep netting or bottle trapping. Photo of the Chinese Bullfrog recorded is shown in below.



Photo 1 Chinese Bullfrog

3.2 RESULT OF WATER QUALITY

- 3.2.1 In the Reporting Month, water quality monitoring was carried out on **27th September 2021**. Additional water quality measurement at the catchpits adjacent to the ponds was conducted in the Reporting Month.

The monitoring results of in-situ measurements are summarized in *Table 3-4*. In addition to this Reporting Month, water samples were collected at each pond for laboratory testing analysis and the results are summarized in *Table 3-5*. Detailed monitoring results including the laboratory measurement are shown in *Appendix C*.

Table 3-4 Summary of Water Quality Monitoring Results (in-situ measurements)

Location	Water depth(m)	DO (Averaged) (mg/L)	Temp (Averaged) (°C)	Turbidity (Averaged) (NTU)	pH (Averaged) (unit)
Pond A	2.8	5.0	26.7	4.6	7.2
Pond B	2.7	7.2	26.3	15.4	7.4
Pond C	2.9	7.1	26.0	4.5	7.7
Pond D	3.0	6.7	26.0	6.5	7.7
Pond E	3.1	5.9	26.0	15.3	7.5
Pond F	3.0	7.9	27.0	4.9	7.6
Pond G	3.0	7.3	27.8	4.4	7.5
Catchpit of Pond C	0*	-	-	-	-
Catchpit of Pond E	0*	-	-	-	-
Catchpit 1 of Pond F	0*	-	-	-	-
Catchpit 2 of Pond F	0*	-	-	-	-
Catchpit of Pond G	0*	-	-	-	-

Remarks:

(*) During the water monitoring, the catchpit was dried up and sampling was unable to be carried out.

Table 3-5 Summary of Water Quality Monitoring Results (laboratory measurements)

Location	Ammonia as N (mg/L)	Nitrite + Nitrate as N (mg/L)	Total Phosphorus as P (mg/L)	Reactive Phosphorus as P (mg/L)	Biochemical Oxygen Demand (mg/L)
Pond A	0.13	0.19	0.05	0.08	3
Pond B	0.13	0.42	<0.01	0.04	2
Pond C	0.06	0.22	0.02	0.06	<2
Pond D	<0.01	0.34	0.09	0.14	<2
Pond E	0.1	0.16	0.18	0.29	<2
Pond F	<0.01	<0.01	<0.01	0.05	6
Pond G	<0.01	<0.01	<0.01	0.05	6
Catchpit of Pond C	0*				
Catchpit of Pond E	0*				
Catchpit 1 of Pond F	0*				
Catchpit 2 of Pond F	0*				
Catchpit of Pond G	0*				

Remarks: (*) During the water monitoring, the catchpit was dried up and sampling was unable to be carried out.

- 3.2.2 As clarified by the Contractor and RE, the water surface area of each pond could be determined based on the measured water depth and then convert them to water surface area. The conversion table is shown in *Appendix D* and it is derived from the “Depth-Area Curve” in the HCMP construction drawings. The summary of area of water coverage of each pond in wet season is presented in *Table 3-6*.

Table 3-6 Summary Area of Water Coverage of each Pond (Wet Season)

Location	Area of the Pond Full Coverage (m ²)	Surveying in the Reporting Month		
		Water depth (m)	Area of Water Coverage by Calculation (m ²)	Area of water coverage (%)
Pond A	911.9	2.8	437.8	48%

Location	Area of the Pond Full Coverage (m ²)	Surveying in the Reporting Month		
		Water depth (m)	Area of Water Coverage by Calculation (m ²)	Area of water coverage (%)
Pond B	991.9	2.7	448.3	<u>45%</u>
Pond C	1090.0	2.9	563.6	52%
Pond D	1287.0	3.0	746.3	58%
Pond E	770.0	3.1	396.3	51%
Pond F	1123.0	3.0	662.3	59%
Pond G	931.0	3.0	620.7	67%

Remark: bold and underlined indicated Action Level exceedance.

- 3.2.3 It is noted that Action Level exceedances were triggered in Ponds A and B, which areas of water coverage of each pond as calculated by conversion were less than 50% in wet season. Since water levels at Pond A and Pond B were drained down to 1m for maintenance work previously and refill of water was still on-going, it is concluded that the exceedances at Ponds A and B were not project related.

3.3 SITE INSPECTION

- 3.3.1 Site inspection for the establishment of WCA was conducted by ET on *1st, 8th, 15th, 24th and 30th September 2021*. During site inspection in last Reporting Month, signs of flood/ storm damages were observed in Pond A to Pond E on *20th and 26th August 2021* and some planted vegetation were damaged. It was concluded that the damages were related to the rainstorm and flooded happened on *18th and 19th August 2021*. According to the Action Plan, the Contractor and RE have been reviewed the damages and some repairs works were proposed to be undertaken.

- 3.3.2 In the Reporting Month, the repairs works for the WCA were completed and photographic records showing the condition of the WCA (general view of the existing vegetation) in the Reporting Month are shown in *Appendix E*.

3.4 CONCLUSION

Ecological

- 3.4.1 Ecological monitoring has been undertaken within the Wetland Construction Area during the reporting month, i.e., *17th and 30th September 2021* and covered the wildlife groups as specified in the HCMP, i.e., dragonfly (including exuviae), butterfly and amphibian. The findings of the monitoring have been evaluated against the performance limit and contingency plan and follow-up action would not be required because neither the action or limit level of the monitored faunal groups were reached.

Water Quality

- 3.4.2 In-situ measurement of water quality monitoring has been undertaken within the Wetland Construction Area during the reporting month. The findings of the monitoring have been evaluated against the performance limit and contingency plan, and follow-up action would not be required because neither the action or limit level were reached.

- 3.4.3 In the Reporting Month, Action Level exceedances were triggered in Ponds A and Pond B, which areas of water coverage of each pond as calculated by conversion were less than 50% in wet season. Since water levels at Pond A and Pond B were drained down to 1m for maintenance work previously and refill of water was still on-going, it is concluded that the exceedances at Ponds A and B were not project related.

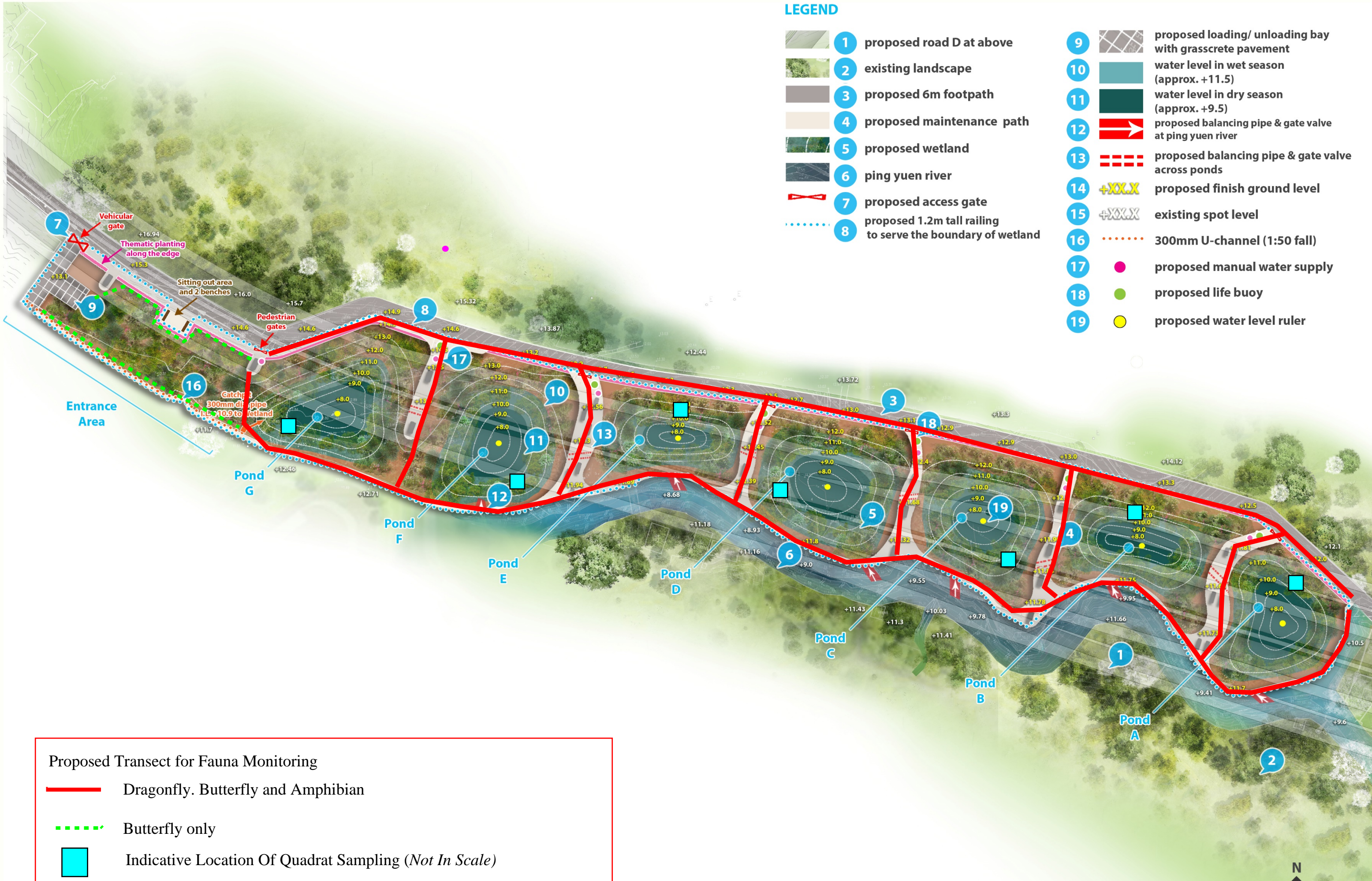
- 3.4.4 Monitoring of WCA at establishment stage has been conducted for one year duration according to the approved HCMP. The establishment stage of wetland was commenced on 1st October 2020 and this is the last monitoring report for the Wetland Compensation Area. The monitoring results of ecology and water quality are generally in order, and no follow up measures under the EM&A is required. After establishment stage, AFCD would be responsible of maintenance and the monitoring works.

Appendix A

Layout Plan of the Wetland Compensation Area

LEGEND

- 1 proposed road D at above
- 2 existing landscape
- 3 proposed 6m footpath
- 4 proposed maintenance path
- 5 proposed wetland
- 6 ping yuen river
- 7 proposed access gate
- 8 proposed 1.2m tall railing to serve the boundary of wetland
- 9 proposed loading/ unloading bay with grasscrete pavement
- 10 water level in wet season (approx. +11.5)
- 11 water level in dry season (approx. +9.5)
- 12 proposed balancing pipe & gate valve at ping yuen river
- 13 proposed balancing pipe & gate valve across ponds
- 14 +XXX.X proposed finish ground level
- 15 +XXX.X existing spot level
- 16 300mm U-channel (1:50 fall)
- 17 ● proposed manual water supply
- 18 ● proposed life buoy
- 19 ● proposed water level ruler

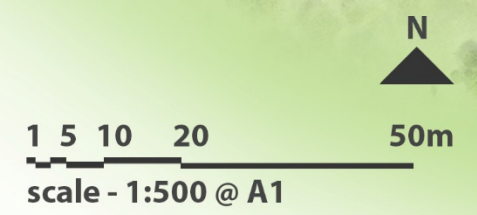


Proposed Transect for Fauna Monitoring

- Dragonfly, Butterfly and Amphibian
- - - Butterfly only
- Indicative Location Of Quadrat Sampling (*Not In Scale*)

Proposed Wetland Layout Plan

Figure No.: C6/C00/WL-002



Appendix B

Calibration Certificate of Monitoring Equipment



REPORT OF EQUIPMENT PERFORMANCE CHECK/CALIBRATION

CONTACT:	MR BEN TAM	WORK ORDER:	HK2136941
CLIENT:	ACTION UNITED ENVIRONMENT SERVICES AND CONSULTING		
ADDRESS:	RM A 20/F., GOLD KING IND BLDG, NO. 35-41 TAI LIN PAI ROAD, KWAI CHUNG, N.T. HONG KONG	SUB-BATCH:	0
		LABORATORY:	HONG KONG
		DATE RECEIVED:	09-Sep-2021
		DATE OF ISSUE:	15-Sep-2021

SPECIFIC COMMENTS

Equipment information (Brand name, Model No., Serial No. and Equipment No.) is provided by client. The performance of the equipment stated in this report is checked with independent reference material and results compared against a calibrated secondary source.

The "Tolerance Limit" quoted is the acceptance criteria applicable for similar equipment used by the laboratory or quoted from relevant international standards.

The "Next Calibration Date" is recommended according to best practice principle as practised by the laboratory or quoted from relevant international standards.

The validity of equipment/ meter performance only applies to the result(s) stated in the report.

Equipment Type:	Multifunctional Meter
Service Nature:	Performance Check
Scope:	Conductivity, Dissolved Oxygen, pH Value, Turbidity, Salinity and Temperature
Brand Name/ Model No.:	[YSI]/ [Professional DSS]
Serial No./ Equipment No.:	[20]101862/ 15H103928/ [EQW018]
Date of Calibration:	14-September-2021

GENERAL COMMENTS

This is the Final Report and supersedes any preliminary report with this batch number.

Ms. Lin Wai Yu, Iris
Assistant Manager - Inorganic

This report may not be reproduced except with prior written approval from ALS Technichem (HK) Pty Ltd.

REPORT OF EQUIPMENT PERFORMANCE CHECK/CALIBRATION



WORK ORDER: HK2136941
SUB-BATCH: 0
DATE OF ISSUE: 15-Sep-2021
CLIENT: ACTION UNITED ENVIRONMENT SERVICES AND CONSULTING

Equipment Type: Multifunctional Meter
Brand Name/ Model No.: [YSI]/ [Professional DSS]
Serial No./ Equipment No.: [20J101862/ 15H103928]/ [EQW018]
Date of Calibration: 14-September-2021 **Date of Next Calibration:** 14-December-2021

PARAMETERS:

Conductivity Method Ref: APHA (21st edition), 2510B

Expected Reading (µS/cm)	Displayed Reading (µS/cm)	Tolerance (%)
146.9	153.8	+4.7
6667	6903	+3.5
12890	13790	+7.0
58670	61979	+5.6
	Tolerance Limit (%)	±10.0

Dissolved Oxygen Method Ref: APHA (21st edition), 4500O: G

Expected Reading (mg/L)	Displayed Reading (mg/L)	Tolerance (mg/L)
3.76	3.62	-0.14
5.31	5.36	+0.05
7.66	7.74	+0.08
	Tolerance Limit (mg/L)	±0.20

pH Value Method Ref: APHA (21st edition), 4500H: B

Expected Reading (pH unit)	Displayed Reading (pH unit)	Tolerance (pH unit)
4.0	3.92	-0.08
7.0	6.96	-0.04
10.0	9.98	-0.02
	Tolerance Limit (pH unit)	±0.20

Remark: "Displayed Reading" presents the figures shown on item under calibration / checking regardless of equipment precision or significant figures.

Ms. Lin Wai Yu, Iris
 Assistant Manager - Inorganic

REPORT OF EQUIPMENT PERFORMANCE CHECK/CALIBRATION



WORK ORDER: HK2136941
SUB-BATCH: 0
DATE OF ISSUE: 15-Sep-2021
CLIENT: ACTION UNITED ENVIRONMENT SERVICES AND CONSULTING

Equipment Type: Multifunctional Meter
Brand Name/ Model No.: [YSI]/ [Professional DSS]
Serial No./ Equipment No.: [20J101862/ 15H103928]/ [EQW018]
Date of Calibration: 14-September-2021 **Date of Next Calibration:** 14-December-2021

PARAMETERS:

Turbidity Method Ref: APHA (21st edition), 2130B

Expected Reading (NTU)	Displayed Reading (NTU)	Tolerance (%)
0	0.78	--
4	4.09	+2.3
40	39.37	-1.6
80	78.96	-1.3
400	394.01	-1.5
800	787.92	-1.5
	Tolerance Limit (%)	±10.0

Salinity Method Ref: APHA (21st edition), 2520B

Expected Reading (ppt)	Displayed Reading (ppt)	Tolerance (%)
0	0.00	--
10	10.06	+0.6
20	20.24	+1.2
30	29.53	-1.6
	Tolerance Limit (%)	±10.0

Remark: "Displayed Reading" presents the figures shown on item under calibration / checking regardless of equipment precision or significant figures.

Ms. Lin Wai Yu, Iris
 Assistant Manager - Inorganic

REPORT OF EQUIPMENT PERFORMANCE CHECK/CALIBRATION



WORK ORDER: HK2136941
SUB-BATCH: 0
DATE OF ISSUE: 15-Sep-2021
CLIENT: ACTION UNITED ENVIRONMENT SERVICES AND CONSULTING

Equipment Type: Multifunctional Meter
Brand Name/ Model No.: [YSI]/ [Professional DSS]
Serial No./ Equipment No.: [20J101862/ 15H103928]/ [EQW018]
Date of Calibration: 14-September-2021 Date of Next Calibration: 14-December-2021

PARAMETERS:

Temperature Method Ref: Section 6 of International Accreditation New Zealand Technical Guide No. 3 Second edition March 2008: Working Thermometer Calibration Procedure.

Expected Reading (°C)	Displayed Reading (°C)	Tolerance (°C)
10.5	10.8	+0.3
21.0	21.4	+0.4
39.5	39.3	-0.2
	Tolerance Limit (°C)	±2.0

Remark: "Displayed Reading" presents the figures shown on item under calibration / checking regardless of equipment precision or significant figures.

Ms. Lin Wai Yu, Iris
Assistant Manager - Inorganic

Appendix C

Water Quality Monitoring Data

Summary of Wetland Water Quality Data

Location	Time	Depth (m)	Temp (oC)		DO (mg/L)		DO (%)		Turbidity (NTU)		Salinity		pH		Ammonia as N (mg/L)	Nitrite + Nitrate as N (mg/L)	Total Phosphorus as P (mg/L)	Reactive Phosphorus as P (mg/L)	Biochemical Oxygen Demand (mg/L)
Pond A	9:30	2.8	26.7	26.7	4.98	5.0	62.3	62.4	4.7	4.6	0.15	0.2	7.16	7.2	0.13	0.19	0.05	0.08	3
			26.7		4.99		62.4		4.6		0.15		7.16						
Pond B	9:40	2.7	26.3	26.3	7.2	7.2	89.1	89.0	15.3	15.4	0.10	0.1	7.43	7.4	0.13	0.42	<0.01	0.04	2
			26.3		7.18		88.9		15.4		0.10		7.43						
Pond C	9:50	2.9	26	26.0	7.07	7.1	87.3	87.3	4.6	4.5	0.14	0.1	7.71	7.7	0.06	0.22	0.02	0.06	<2
			26		7.07		87.2		4.5		0.14		7.71						
Pond D	10:00	3.0	26	26.0	6.65	6.7	82.0	82.1	6.6	6.5	0.10	0.1	7.71	7.7	<0.01	0.34	0.09	0.14	<2
			26		6.66		82.2		6.5		0.10		7.71						
Pond E	10:10	3.1	26	26.0	5.87	5.9	72.3	72.2	15.3	15.3	0.09	0.1	7.45	7.5	0.1	0.16	0.18	0.29	<2
			26		5.85		72.1		15.2		0.09		7.45						
Pond F	10:20	3.0	27	27.0	7.88	7.9	99.3	99.3	4.9	4.9	0.10	0.1	7.55	7.6	<0.01	<0.01	<0.01	0.05	6
			27		7.87		99.2		5.0		0.10		7.55						
Pond G	10:30	3.0	27.8	27.8	7.29	7.3	92.9	92.8	4.4	4.4	0.14	0.1	7.52	7.5	<0.01	<0.01	<0.01	0.05	6
			27.8		7.27		92.6		4.4		0.14		7.52						


Appendix D


Conversion Sheet for Area of Water Coverage in each Pond

Area of Water Coverage Conversion Sheet

Water depth (m)	Pond A		Pond B		Pond C		Pond D		Pond E		Pond F		Pond G	
	Water Level (m)	Area ₂ D (m ²)	Water Level (m)	Area ₂ D (m ²)	Water Level (m)	Area ₂ D (m ²)	Water Level (m)	Area ₂ D (m ²)	Water Level (m)	Area ₂ D (m ²)	Water Level (m)	Area ₂ D (m ²)	Water Level (m)	Area ₂ D (m ²)
4.0	11.5	911.9	11.5	991.9	11.5	1090.0	11.5	1287.0	11.5	770.0	11.5	1123.0	11.5	931.0
3.9	11.4	866.5	11.4	935.8	11.4	1020.8	11.4	1216.2	11.4	711.0	11.4	1065.6	11.4	897.4
3.8	11.3	821.0	11.3	879.7	11.3	951.6	11.3	1145.4	11.3	652.0	11.3	1008.2	11.3	863.8
3.7	11.2	775.5	11.2	823.6	11.2	882.4	11.2	1074.6	11.2	593.0	11.2	950.8	11.2	830.2
3.6	11.1	730.0	11.1	767.5	11.1	813.2	11.1	1003.8	11.1	534.0	11.1	893.4	11.1	796.6
3.5	11.0	684.5	11.0	711.4	11.0	744.0	11.0	933.0	11.0	475.0	11.0	836.0	11.0	763.0
3.4	10.9	646.2	10.9	673.6	10.9	713.9	10.9	895.7	10.9	455.3	10.9	801.3	10.9	734.5
3.3	10.8	607.9	10.8	635.8	10.8	683.9	10.8	858.3	10.8	435.7	10.8	766.5	10.8	706.1
3.2	10.7	569.6	10.7	598.0	10.7	653.8	10.7	821.0	10.7	416.0	10.7	731.8	10.7	677.6
3.1	10.6	531.3	10.6	560.2	10.6	623.7	10.6	783.7	10.6	396.3	10.6	697.1	10.6	649.1
3.0	10.5	493.0	10.5	522.4	10.5	593.7	10.5	746.3	10.5	376.7	10.5	662.3	10.5	620.7
2.9	10.4	465.4	10.4	497.7	10.4	563.6	10.4	709.0	10.4	357.0	10.4	627.6	10.4	592.2
2.8	10.3	437.8	10.3	473.0	10.3	533.5	10.3	671.7	10.3	337.3	10.3	592.9	10.3	563.7
2.7	10.2	410.2	10.2	448.3	10.2	503.5	10.2	634.3	10.2	317.7	10.2	558.1	10.2	535.3
2.6	10.1	382.6	10.1	423.6	10.1	473.4	10.1	597.0	10.1	298.0	10.1	523.4	10.1	506.8
2.5	10.0	355.0	10.0	398.9	10.0	443.3	10.0	559.7	10.0	278.3	10.0	488.7	10.0	478.3
2.4	9.9	331.2	9.9	378.9	9.9	413.3	9.9	522.3	9.9	258.7	9.9	453.9	9.9	449.9
2.3	9.8	307.4	9.8	358.9	9.8	383.2	9.8	485.0	9.8	239.0	9.8	419.2	9.8	421.4
2.2	9.7	283.6	9.7	338.9	9.7	353.1	9.7	447.7	9.7	219.3	9.7	384.5	9.7	392.9
2.1	9.6	259.8	9.6	318.9	9.6	323.1	9.6	410.3	9.6	199.7	9.6	349.7	9.6	364.5
2.0	9.5	236.0	9.5	298.9	9.5	293.0	9.5	373.0	9.5	167.0	9.5	315.0	9.5	336.0
1.9	9.4	222.3	9.4	280.6	9.4	276.8	9.4	353.4	9.4	157.9	9.4	298.1	9.4	319.1
1.8	9.3	208.6	9.3	262.3	9.3	260.6	9.3	333.9	9.3	148.7	9.3	281.3	9.3	302.2
1.7	9.2	194.9	9.2	244.0	9.2	244.4	9.2	314.3	9.2	139.6	9.2	264.4	9.2	285.3
1.6	9.1	181.2	9.1	225.7	9.1	228.2	9.1	294.7	9.1	130.5	9.1	247.5	9.1	268.4
1.5	9.0	167.5	9.0	207.4	9.0	212.0	9.0	275.1	9.0	121.3	9.0	230.7	9.0	251.5
1.4	8.9	153.8	8.9	191.3	8.9	195.8	8.9	255.6	8.9	112.2	8.9	213.8	8.9	234.6
1.3	8.8	140.1	8.8	175.2	8.8	179.6	8.8	236.0	8.8	103.1	8.8	196.9	8.8	217.7
1.2	8.7	126.4	8.7	159.1	8.7	163.3	8.7	216.4	8.7	93.9	8.7	180.1	8.7	200.7
1.1	8.6	112.7	8.6	143.0	8.6	147.1	8.6	196.8	8.6	84.8	8.6	163.2	8.6	183.8
1.0	8.5	99.0	8.5	126.9	8.5	130.9	8.5	177.3	8.5	75.7	8.5	146.3	8.5	166.9
0.9	8.4	90.0	8.4	111.7	8.4	114.7	8.4	157.7	8.4	66.5	8.4	129.5	8.4	150.0
0.8	8.3	81.0	8.3	96.5	8.3	98.5	8.3	138.1	8.3	57.4	8.3	112.6	8.3	133.1
0.7	8.2	72.0	8.2	81.3	8.2	82.3	8.2	118.5	8.2	48.3	8.2	95.7	8.2	116.2
0.6	8.1	63.0	8.1	66.1	8.1	66.1	8.1	99.0	8.1	39.1	8.1	78.9	8.1	99.3
0.5	8.0	54.0	8.0	50.9	8.0	49.9	8.0	79.4	8.0	30.0	8.0	62.0	8.0	82.4

Remarks:

 Area of water coverage <50%

 Area of water coverage <10%

Appendix E

Photographic Records

Photographic Record of Wetland Compensation Area



Pond A



Pond B



Pond C



Pond D



Pond E



Pond F



Pond G



Ping Yuen River

Appendix F

Overview of Open Water Area in Each Pond

Overview of the Pond Condition



Pond A



Pond B



Pond C



Pond D



Pond E



Pond F



Pond G

Appendix G

Details Results of Vegetation Monitoring

RESULTS OF THE VEGETATION MONITORING (SEP 2021)

Seasonal Water Level Fluctuation Area

	Pond A			Pond B			Pond C			Pond D			Pond E			Pond F			Pond G			
	D	%	H	D	%	H	D	%	H	D	%	H	D	%	H	D	%	H	D	%	H	
Water level	3.05			3.08			3.05			3.1			3.1			3			3			
estimated level of quadrat *	3.1-4.0			3.1-3.6			3.0 - 3.5			3.0 - 3.3			3.2-3.8			2.7 - 3.6			2.7 - 3.5			
overall vegetation cover (%)		70			40			35			45			30			60			95		
coverage of bare ground (%)		40			20			60			30			70			30			20		
coverage of boulder (%)		35			35			15			35			0			40			15		
coverage of leaf litter (%)		0			30			0			3			0			3			6		
<i>Alocasia macrorrhiza</i>	8	35	60																			
<i>Alternanthera sp.</i> **																				15	20	
<i>Aster subulatus</i>				3	2	50				6	2	20	6	1	20	12	2	15	6	3	20	
<i>Colocasia esculenta</i>							3	5	15				4	15	40							
<i>Commelina diffusa</i> **		4	20	1	4	35	1	2	40		3	20					5	40		25	70	
<i>Cyperus involucreatus</i>		40	120							1	3	70										
<i>Cyperus papyrus</i> ***											20	60		4	60		50	80		70	110	
<i>Cyperus pilosus</i>				2	2	70										1	3	80				
<i>Emilia sonchifolia</i>	12	2	40	6	4	30																
<i>Hydrocotyle verticillata</i> **					5	15					5	20						10		5	10	
<i>Juncus effusus</i> ***					1	30														5	60	
<i>Lolium perenne</i> ***					1	30																
<i>Mikania micrantha</i> **		2	20		4	20							1	2	30		5	30		4	70	
<i>Mimosa pudica</i> **																	5	40				
<i>Phragmites australis</i> ***		3	60		25	140		8	80		15	150		15	150		15	140		12	170	
<i>Wedelia trilobata</i> **																	4	30				
<i>Polygonum hydropiper</i>										1	1	30	2	1	40					1	2	60
<i>Hedygium coronarium</i>				6	12	50										6	10	60				
<i>Cyclosorus parasiticus</i>							1	2	40	1	1	30				1	2	40				
<i>Ludwigia adscendens</i> **					5	20		1	10		1	20										
<i>Desmodium qiqq</i>																1	1	30				
<i>Bombax ceiba</i>																1	1	30				
<i>Ficus hispida</i>																1	1	15				
<i>Pteris vittata</i>				3			3	5	40	2	2	35				2	1	15				
<i>Sagittaria trifolia</i>													1	1	20							
<i>Ruellia coerulea</i>				4	2	30	10	25	60	1	1	30	4	1	30							
<i>Eleocharis dulcis</i> ***														1	20							

Note:

* estimated level of the upper and lower side of the quadrat

** creeping plant, estimation of density could only provided if individual plant identifiable within the quadrat

*** shoots of the species growth in clump and propagate by rhizome, estimation of density could only provided if individual plant/clump identifiable within the quadrat

^^ hydro-seeded species with vegetative part only, species to be confirmed when reproductive part available

Appendix H

The General View of the Quadrat

General View of the Quadrat in "Seasonal Water Level Fluctuation Area"



Pond A



Pond B



Pond C



Pond D



Pond E



Pond F



Pond G