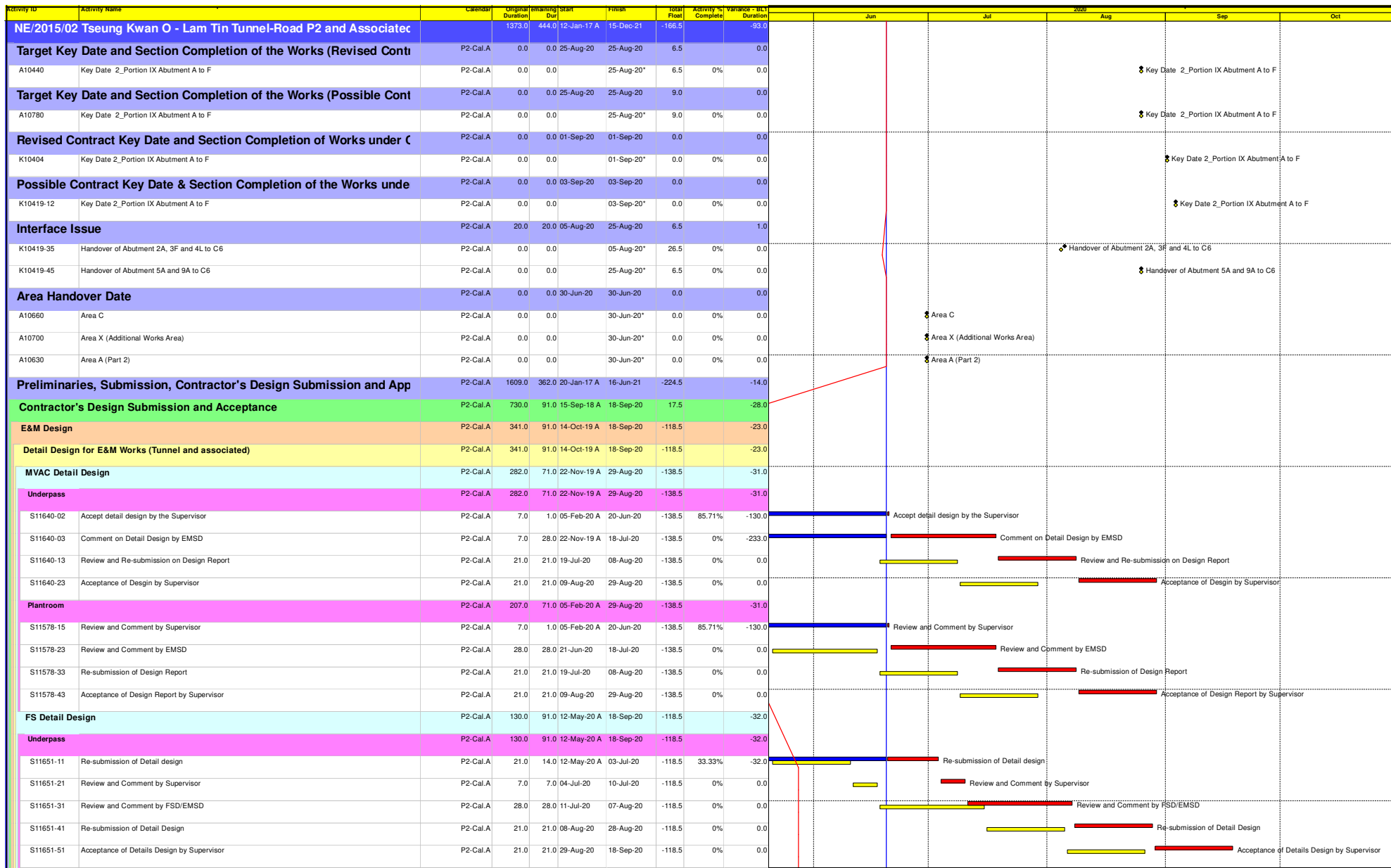


High Level 3 Months Look Ahead Programme

Activities	Aug-20	Sep-20	Oct-20
Lam Tin Interchange			
EHC2 U-Trough			
Site Formation - Area 1G1 & 1G2 &5			
Site Formation - Area 2			
Site Formation - Area 3 and 4 Slope stabilisation			
Administration Building			
Bridge Construction			
Main Tunnel			
MT Lining Works			
TKO Interchange			
Bridge Construction			
East Ventilation Building			

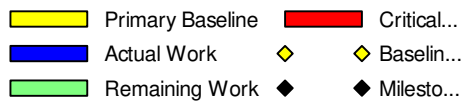
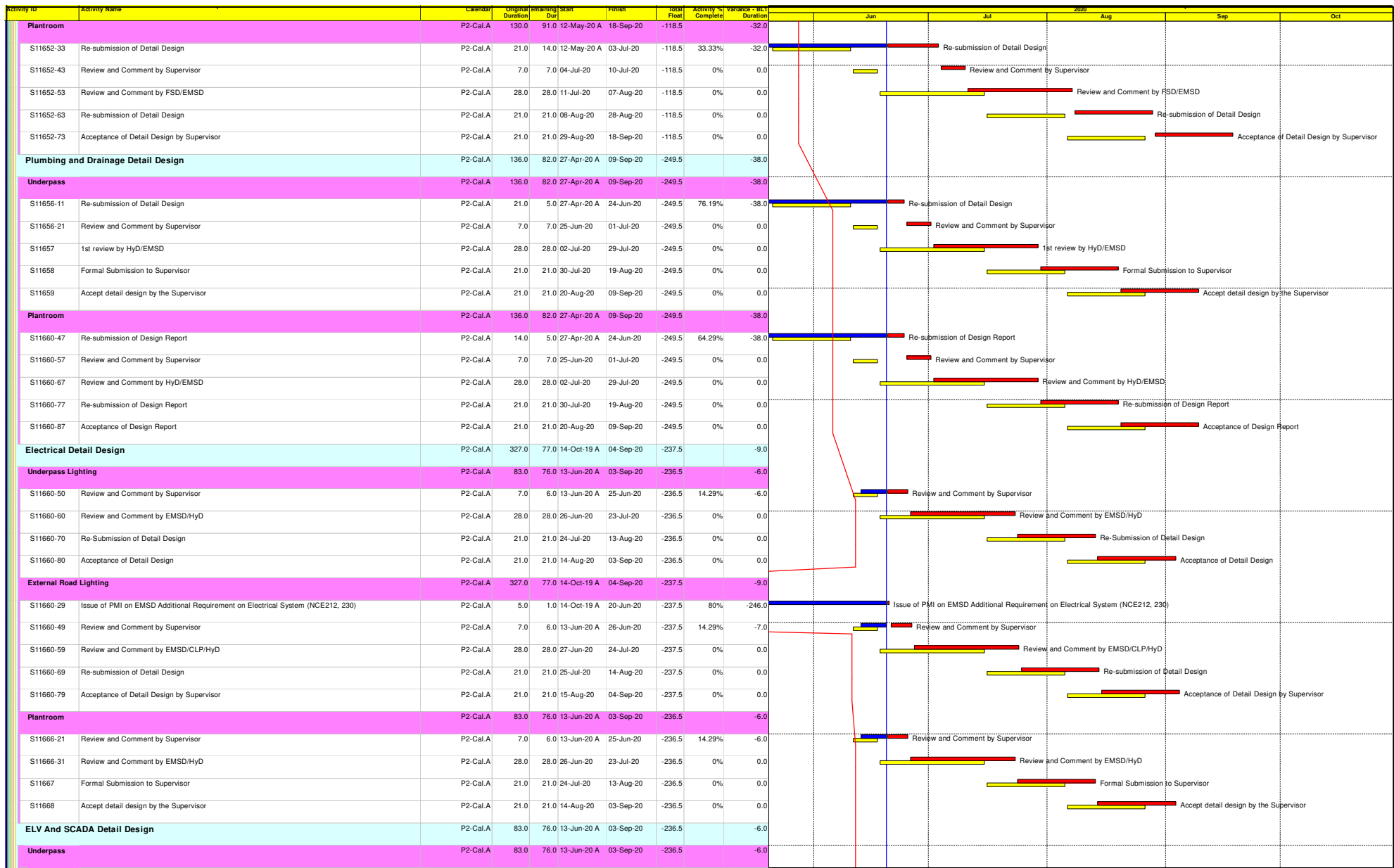


	Primary Baseline		Critical...
	Actual Work		Baselin...
	Remaining Work		Milesto...

NE/2015/02 Tseung Kwan O - Lam Tin Tunnel - Road P2 and Associated Works (Jun-20)

3 Monthly Rolling Programme Update
 (Data Date : 20 Jun 2020)
 Page : 1 of 12

Date	Revision	Checked	Approved
20-Jun-20			









NE/2015/02 Tseung Kwan O - Lam Tin Tunnel - Road P2 and Associated Works (Jun-20)

3 Monthly Rolling Programme Update
(Data Date : 20 Jun 2020)
Page : 2 of 12

Date	Revision	Checked	Approved
20-Jun-20			

Activity ID	Activity Name	Calendar	Original Duration	Planning Dur	Start	Finish	Total Float	Activity % Complete	Variance	SLC Duration	2020	Jun	Jul	Aug	Sep	Oct
S11669-41	Review and Comment by Supervisor	P2-Cal.A	7.0	6.0	13-Jun-20 A	25-Jun-20	-236.5	14.29%	-6.0			Review and Comment by Supervisor				
S11669-42	Review and Comment by EMSD	P2-Cal.A	28.0	28.0	26-Jun-20	23-Jul-20	-236.5	0%	0.0			Review and Comment by EMSD				
S11669-49	Re-submission of design report	P2-Cal.A	21.0	21.0	24-Jul-20	13-Aug-20	-236.5	0%	0.0			Re-submission of design report				
S11669-59	Accept detail design by the Supervisor	P2-Cal.A	21.0	21.0	14-Aug-20	03-Sep-20	-236.5	0%	0.0			Accept detail design by the Supervisor				
Plantroom																
S11670-293	Review and Comment by Supervisor	P2-Cal.A	7.0	6.0	13-Jun-20 A	25-Jun-20	-236.5	14.29%	-6.0			Review and Comment by Supervisor				
S11670-294	Review and Comment by EMSD	P2-Cal.A	28.0	28.0	26-Jun-20	23-Jul-20	-236.5	0%	0.0			Review and Comment by EMSD				
S11670-30	Re-submission of Design Report	P2-Cal.A	21.0	21.0	24-Jul-20	13-Aug-20	-236.5	0%	0.0			Re-submission of Design Report				
S11670-49	Accept Detail Design by the Supervisor	P2-Cal.A	21.0	21.0	14-Aug-20	03-Sep-20	-236.5	0%	0.0			Accept Detail Design by the Supervisor				
Design of Architectural Finishes for Internal Walls of U-Trough Structures																
S11675	Prepare and Submit Design of Architectural Finishes for Internal Walls of U-Trough Structures (VE and PC Panel)	P2-Cal.A	21.0	2.0	15-Sep-18 A	21-Jun-20	-169.5	90.48%	-625.0			Prepare and Submit Design of Architectural Finishes for Internal Walls of U-Trough Structures (VE and PC Panel)				
S11680	Review and Discuss Design of Architectural Finishes for Internal Walls of U-Trough Structures (VE and PC Panel)	P2-Cal.A	21.0	21.0	22-Jun-20	12-Jul-20	-169.5	0%	0.0			Review and Discuss Design of Architectural Finishes for Internal Walls of U-Trough Structures (VE and PC Panel)				
S11700	Resubmit Design of Architectural Finishes for Internal Walls of U-Trough Structures (VE and PC Panel)	P2-Cal.A	14.0	14.0	13-Jul-20	26-Jul-20	-169.5	0%	0.0			Resubmit Design of Architectural Finishes for Internal Walls of U-Trough Structures (VE and PC Panel)				
S11720	Review and Accept Design of Architectural Finishes for Internal Walls of U-Trough Structures (VE and PC Panel)	P2-Cal.A	21.0	21.0	27-Jul-20	16-Aug-20	-169.5	0%	0.0			Review and Accept Design of Architectural Finishes for Internal Walls of U-Trough Structures (VE and PC Panel)				
Irrigation System																
S11788	Prepare & Submission of Form 542	P2-Cal.A	14.0	14.0	20-Jun-20	03-Jul-20	31.5	0%	0.0			Prepare & Submission of Form 542				
S11789	Reviewed by WSD	P2-Cal.A	28.0	28.0	04-Jul-20	31-Jul-20	31.5	0%	0.0			Reviewed by WSD				
S11790	Formal Submission to Supervisor	P2-Cal.A	14.0	14.0	01-Aug-20	14-Aug-20	31.5	0%	0.0			Formal Submission to Supervisor				
S11800	Review and Accept Submission for Waterpoints and associated elements	P2-Cal.A	21.0	21.0	15-Aug-20	04-Sep-20	31.5	0%	0.0			Review and Accept Submission for Waterpoints and associated elements				
Contractor Cost Saving Design																
DDA Submission for CSD4 of Reclaimed Section (CT01 CH226.440 - CH251.440)																
S18208	Review and Accept DDA Submission for CSD of Reclaimed Section by Supervisor (CT01)	P2-Cal.A	21.0	14.0	07-May-20 A	03-Jul-20	-162.5	33.33%	-37.0			Review and Accept DDA Submission for CSD of Reclaimed Section by Supervisor (CT01)				
S18218	Review and Accept DDA Submission for CSD of Reclaimed Section by HyD (CT01)	P2-Cal.A	21.0	21.0	04-Jul-20	24-Jul-20	-162.5	0%	0.0			Review and Accept DDA Submission for CSD of Reclaimed Section by HyD (CT01)				
Major Temporary Works Design																
ELS Design for U-Trough A & B within the Reclaimed Section (S200 CH 821 - CH 755)																
S12620	Prepare and Submit ELS Design for U-Trough A & B within the Reclaimed Section (S200 CH 821 - CH 755)	P2-Cal.A	18.0	18.0	20-Jun-20	07-Jul-20	-214.5	0%	0.0			Prepare and Submit ELS Design for U-Trough A & B within the Reclaimed Section (S200 CH 821 - CH 755)				
S12640	Review and Discuss ELS Design for U-Trough A & B within the Reclaimed Section (S200 CH 821 - CH 755)	P2-Cal.A	21.0	21.0	08-Jul-20	28-Jul-20	-196.5	0%	0.0			Review and Discuss ELS Design for U-Trough A & B within the Reclaimed Section (S200 CH 821 - CH 755)				
S12660	Resubmit ELS Design for U-Trough A & B within the Reclaimed Section (S200 CH 821 - CH 755)	P2-Cal.A	14.0	14.0	29-Jul-20	11-Aug-20	-196.5	0%	0.0			Resubmit ELS Design for U-Trough A & B within the Reclaimed Section (S200 CH 821 - CH 755)				
S12680	Accept ELS Design for U-Trough A & B within the Reclaimed Section (S200 CH 821 - CH 755)	P2-Cal.A	21.0	21.0	12-Aug-20	01-Sep-20	-196.5	0%	0.0			Accept ELS Design for U-Trough A & B within the Reclaimed Section (S200 CH 821 - CH 755)				
ELS Design for U-Trough C (CT01 CH 366.059 - CH 177.156)																
S12780	Prepare and Submit ELS Design for U-Trough C (CT01 CH 366.059 - CH 177.156)	P2-Cal.A	18.0	18.0	20-Jun-20	07-Jul-20	-214.5	0%	0.0			Prepare and Submit ELS Design for U-Trough C (CT01 CH 366.059 - CH 177.156)				
S12800	Review and Discuss ELS Design for U-Trough C (CT01 CH 366.059 - CH 177.156)	P2-Cal.A	21.0	21.0	08-Jul-20	28-Jul-20	-196.5	0%	0.0			Review and Discuss ELS Design for U-Trough C (CT01 CH 366.059 - CH 177.156)				
S12820	Resubmit ELS Design for U-Trough C (CT01 CH 366.059 - CH 177.156)	P2-Cal.A	14.0	14.0	29-Jul-20	11-Aug-20	-196.5	0%	0.0			Resubmit ELS Design for U-Trough C (CT01 CH 366.059 - CH 177.156)				
S12840	Accept ELS Design for U-Trough C (CT01 CH 366.059 - CH 177.156)	P2-Cal.A	21.0	21.0	12-Aug-20	01-Sep-20	-196.5	0%	0.0			Accept ELS Design for U-Trough C (CT01 CH 366.059 - CH 177.156)				
ELS Design for U-Trough A & B (P2 CH363 - CH411)																
S12960	Review and Discuss ELS Design for U-Trough A & B (P2 CH363 - CH411)	P2-Cal.A	21.0	1.0	09-May-20 A	20-Jun-20	-125.5	95.24%	-22.0			Review and Discuss ELS Design for U-Trough A & B (P2 CH363 - CH411)				
S12980	Resubmit ELS Design for U-Trough A & B (P2 CH363 - CH411)	P2-Cal.A	14.0	14.0	21-Jun-20	04-Jul-20	-93.5	0%	0.0			Resubmit ELS Design for U-Trough A & B (P2 CH363 - CH411)				
S13000	Accept ELS Design for U-Trough A & B (P2 CH363 - CH411)	P2-Cal.A	21.0	21.0	05-Jul-20	25-Jul-20	-93.5	0%	0.0			Accept ELS Design for U-Trough A & B (P2 CH363 - CH411)				

	Primary Baseline		Critical...
	Actual Work		Baselin...
	Remaining Work		Milesto...

NE/2015/02 Tseung Kwan O - Lam Tin Tunnel - Road P2 and Associated Works (Jun-20)

3 Monthly Rolling Programme Update
(Data Date : 20 Jun 2020)
Page : 3 of 12

Date	Revision	Checked	Approved
20-Jun-20			

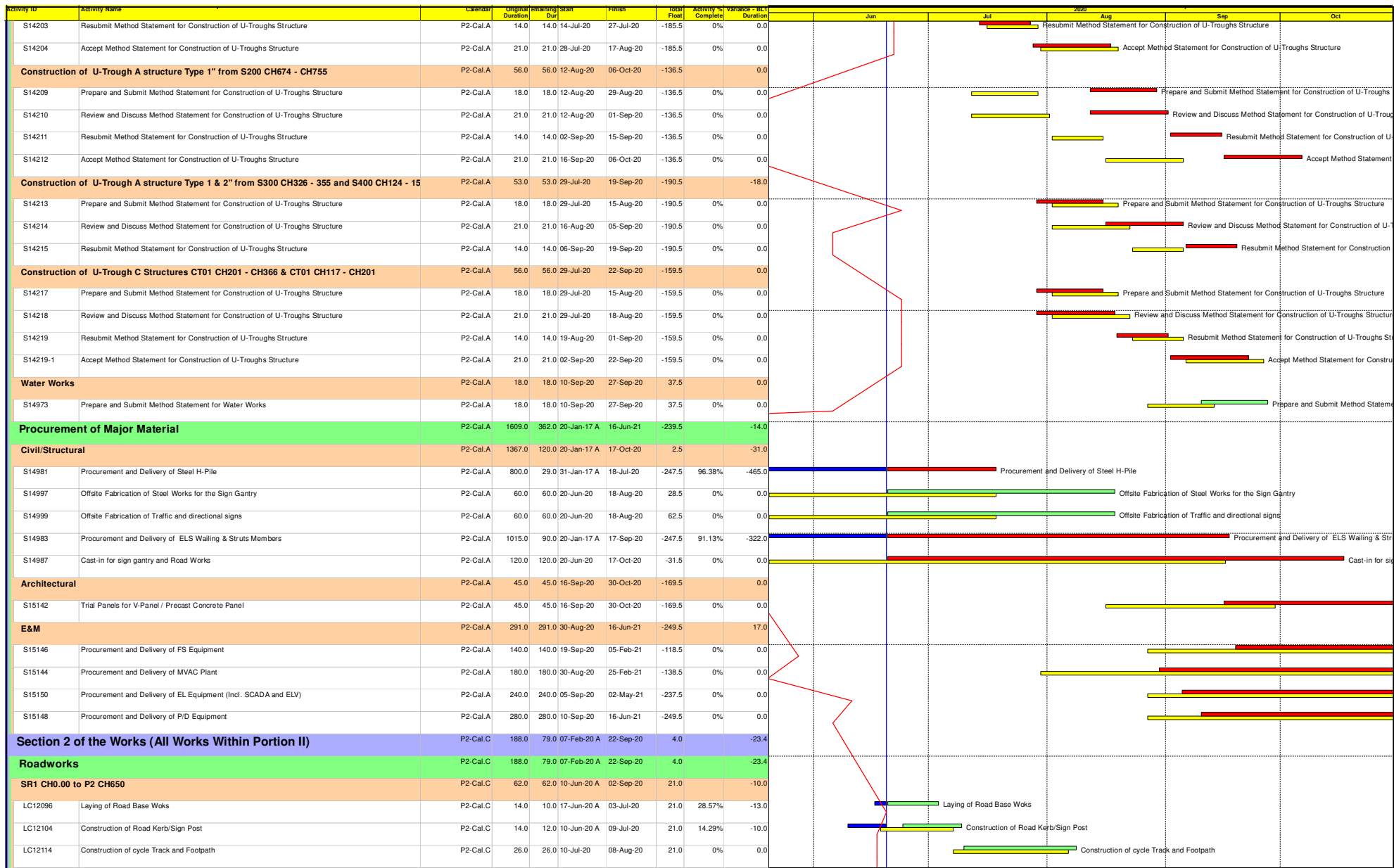
Activity ID	Activity Name	Calendar	Original Duration	Planning Dur	Start	Finish	Total Float	Activity % Complete	Variance - Act Duration	2020	Jun	Jul	Aug	Sep	Oct
ELS Design for U-Trough A & B SR2 (CH100-CH170)															
S13004	Review and Discuss ELS Design for U-Trough A & B (SR2 CH100 - CH170)	P2-Cal.A	21.0	1.0	09-May-20	20-Jun-20	-110.5	95.24%	-22.0		Review and Discuss ELS Design for U-Trough A & B (SR2 CH100 - CH170)				
S13006	Resubmit ELS Design for U-Trough A & B (SR2 CH100 - CH170)	P2-Cal.A	14.0	14.0	21-Jun-20	04-Jul-20	-78.5	0%	0.0		Resubmit ELS Design for U-Trough A & B (SR2 CH100 - CH170)				
S13008	Accept ELS Design for U-Trough A & B (SR2 CH100 - CH170)	P2-Cal.A	21.0	21.0	05-Jul-20	25-Jul-20	-78.5	0%	0.0		Accept ELS Design for U-Trough A & B (SR2 CH100 - CH170)				
Major Construction Works Method Statement															
ELS of U-Troughs (P2 CH363-411)															
S14120-02	Prepare and Submit Method Statement for Excavation and ELS of U-Troughs (P2 CH363-411)	P2-Cal.A	18.0	18.0	21-Jun-20	08-Jul-20	-125.5	0%	0.0		Prepare and Submit Method Statement for Excavation and ELS of U-Troughs (P2 CH363-411)				
S14120-04	1st Review and Discuss Method Statement for Excavation and ELS of U-Troughs (P2 CH363-411)	P2-Cal.A	21.0	21.0	09-Jul-20	29-Jul-20	-125.5	0%	0.0		1st Review and Discuss Method Statement for Excavation and ELS of U-Troughs (P2 CH363-411)				
S14120-06	Resubmit Method Statement for Excavation and ELS of U-Troughs (P2 CH363-411)	P2-Cal.A	7.0	7.0	30-Jul-20	05-Aug-20	-125.5	0%	0.0		Resubmit Method Statement for Excavation and ELS of U-Troughs (P2 CH363-411)				
S14120-10	Accept Method Statement for Excavation and ELS of U-Troughs (P2 CH363-411)	P2-Cal.A	21.0	21.0	06-Aug-20	26-Aug-20	-125.5	0%	0.0		Accept Method Statement for Excavation and ELS of U-Troughs (P2 CH363-411)				
ELS of U-Troughs (SR2 100-170)															
S14120-22	Prepare and Submit Method Statement for Excavation and ELS of U-Troughs (SR2 100-170)	P2-Cal.A	18.0	18.0	21-Jun-20	08-Jul-20	-110.5	0%	0.0		Prepare and Submit Method Statement for Excavation and ELS of U-Troughs (SR2 100-170)				
S14120-24	1st Review and Discuss Method Statement for Excavation and ELS of U-Troughs (SR2 100-170)	P2-Cal.A	21.0	21.0	09-Jul-20	29-Jul-20	-110.5	0%	0.0		1st Review and Discuss Method Statement for Excavation and ELS of U-Troughs (SR2 100-170)				
S14120-26	Resubmit Method Statement for Excavation and ELS of U-Troughs (SR2 100-170)	P2-Cal.A	7.0	7.0	30-Jul-20	05-Aug-20	-110.5	0%	0.0		Resubmit Method Statement for Excavation and ELS of U-Troughs (SR2 100-170)				
S14120-30	Accept Method Statement for Excavation and ELS of U-Troughs (SR2 100-170)	P2-Cal.A	21.0	21.0	06-Aug-20	26-Aug-20	-110.5	0%	0.0		Accept Method Statement for Excavation and ELS of U-Troughs (SR2 100-170)				
ELS of "U-Trough A Type 1" from S200 CH674 - CH755															
S14121-09	Prepare and Submit Method Statement for Excavation and ELS of U-Troughs	P2-Cal.A	18.0	18.0	03-Jul-20	20-Jul-20	-196.5	0%	0.0		Prepare and Submit Method Statement for Excavation and ELS of U-Troughs				
S14121-10	Review and Discuss Method Statement for Excavation and ELS of U-Troughs	P2-Cal.A	21.0	21.0	21-Jul-20	10-Aug-20	-196.5	0%	0.0		Review and Discuss Method Statement for Excavation and ELS of U-Troughs				
S14121-11	Resubmit Method Statement for Excavation and ELS of U-Troughs	P2-Cal.A	7.0	7.0	11-Aug-20	17-Aug-20	-196.5	0%	0.0		Resubmit Method Statement for Excavation and ELS of U-Troughs				
S14121-12	Accept Method Statement for Excavation and ELS of U-Troughs	P2-Cal.A	21.0	21.0	18-Aug-20	07-Sep-20	-196.5	0%	0.0		Accept Method Statement for Excavation and ELS of U-Troughs				
ELS of "U-Trough A Type 1 & 2" from S300 CH326 - 355 and S400 CH124 - 158															
S14121-13	Prepare and Submit Method Statement for Excavation and ELS of U-Troughs	P2-Cal.A	18.0	18.0	03-Jul-20	20-Jul-20	-196.5	0%	0.0		Prepare and Submit Method Statement for Excavation and ELS of U-Troughs				
S14121-14	Review and Discuss Method Statement for Excavation and ELS of U-Troughs	P2-Cal.A	21.0	21.0	21-Jul-20	10-Aug-20	-196.5	0%	0.0		Review and Discuss Method Statement for Excavation and ELS of U-Troughs				
S14121-15	Resubmit Method Statement for Excavation and ELS of U-Troughs	P2-Cal.A	7.0	7.0	11-Aug-20	17-Aug-20	-196.5	0%	0.0		Resubmit Method Statement for Excavation and ELS of U-Troughs				
S14121-16	Accept Method Statement for Excavation and ELS of U-Troughs	P2-Cal.A	21.0	21.0	18-Aug-20	07-Sep-20	-196.5	0%	0.0		Accept Method Statement for Excavation and ELS of U-Troughs				
ELS of U-Trough C Structures CT01 CH201 - CH366 & CT01 CH117 - CH201															
S14121-17	Prepare and Submit Method Statement for Excavation and ELS of U-Troughs	P2-Cal.A	18.0	18.0	20-Jun-20	07-Jul-20	-194.5	0%	0.0		Prepare and Submit Method Statement for Excavation and ELS of U-Troughs				
S14121-18	Review and Discuss Method Statement for Excavation and ELS of U-Troughs	P2-Cal.A	21.0	21.0	08-Jul-20	28-Jul-20	-194.5	0%	0.0		Review and Discuss Method Statement for Excavation and ELS of U-Troughs				
S14121-19	Resubmit Method Statement for Excavation and ELS of U-Troughs	P2-Cal.A	7.0	7.0	29-Jul-20	04-Aug-20	-194.5	0%	0.0		Resubmit Method Statement for Excavation and ELS of U-Troughs				
S14121-20	Accept Method Statement for Excavation and ELS of U-Troughs	P2-Cal.A	21.0	21.0	05-Aug-20	25-Aug-20	-194.5	0%	0.0		Accept Method Statement for Excavation and ELS of U-Troughs				
Construction of U-Troughs structure (P2 CH363-411)															
S14130	Prepare and Submit Method Statement for Construction of U-Troughs Structure (P2 CH363-411)	P2-Cal.A	18.0	18.0	26-Jul-20	12-Aug-20	-75.5	0%	0.0		Prepare and Submit Method Statement for Construction of U-Troughs Structure (P2 CH363-411)				
S14132	Review and Discuss Method Statement for Construction of U-Troughs Structure (P2 CH363-411)	P2-Cal.A	21.0	21.0	13-Aug-20	02-Sep-20	-75.5	0%	0.0		Review and Discuss Method Statement for Construction of U-Troughs Structure (P2 CH363-411)				
S14134	Resubmit Method Statement for Construction of U-Troughs Structure (P2 CH363-411)	P2-Cal.A	14.0	14.0	03-Sep-20	16-Sep-20	-75.5	0%	0.0		Resubmit Method Statement for Construction of U-Troughs Structure (P2 CH363-411)				
S14136	Accept Method Statement for Construction of U-Troughs Structure (P2 CH363-411)	P2-Cal.A	21.0	21.0	17-Sep-20	07-Oct-20	-75.5	0%	0.0		Accept Method Statement for Construction of U-Troughs Structure (P2 CH363-411)				
Construction of U-Trough A structure Type 3 and U-Trough B Type 4" from S200 CH821 to P2															
S14201	Prepare and Submit Method Statement for Construction of U-Troughs Structure	P2-Cal.A	18.0	3.0	06-Jun-20	22-Jun-20	-185.5	83.33%	1.0		Prepare and Submit Method Statement for Construction of U-Troughs Structure				
S14202	Review and Discuss Method Statement for Construction of U-Troughs Structure	P2-Cal.A	21.0	21.0	23-Jun-20	13-Jul-20	-185.5	0%	0.0		Review and Discuss Method Statement for Construction of U-Troughs Structure				

- Primary Baseline
- Critical Path
- Actual Work
- Baseline
- Remaining Work
- Milestone

NE/2015/02 Tseung Kwan O - Lam Tin Tunnel - Road P2 and Associated Works (Jun-20)

3 Monthly Rolling Programme Update
(Data Date : 20 Jun 2020)
Page : 4 of 12

Date	Revision	Checked	Approved
20-Jun-20			

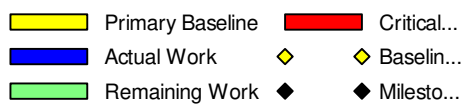
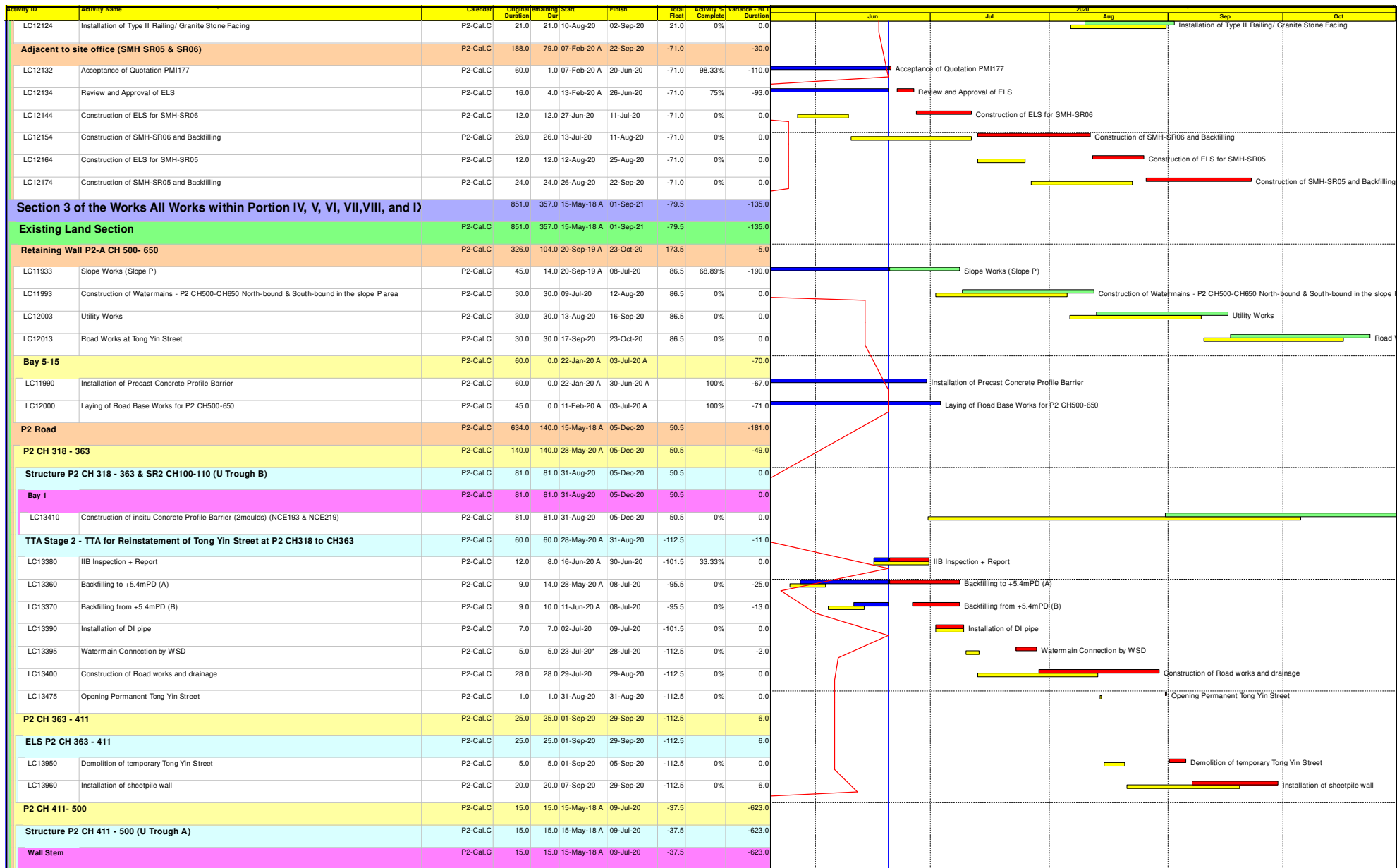


- Primary Baseline
- Critical...
- Actual Work
- Baselin...
- Remaining Work
- Milesto...

NE/2015/02 Tseung Kwan O - Lam Tin Tunnel - Road P2 and Associated Works (Jun-20)

3 Monthly Rolling Programme Update
(Data Date : 20 Jun 2020)
Page : 5 of 12

Date	Revision	Checked	Approved
20-Jun-20			



NE/2015/02 Tseung Kwan O - Lam Tin Tunnel - Road P2 and Associated Works (Jun-20)

3 Monthly Rolling Programme Update
 (Data Date : 20 Jun 2020)
 Page : 6 of 12

Date	Revision	Checked	Approved
20-Jun-20			

Activity ID	Activity Name	Calendar	Original Duration	Planning Dur	Start	Finish	Total Float	Activity % Complete	Variance	SLC Duration	2020	Jun	Jul	Aug	Sep	Oct
LC15260	Backfilling of Engineered Fill Material (lean concrete for road surface) (3430m3) inside U-trough	P2-Cal.C	15.0	15.0	15-May-18 A	09-Jul-20	-37.5	0%	-623.0							
SR2		P2-Cal.C	763.0	357.0	28-Feb-19 A	01-Sep-21	-79.5		13.0							
SR2 CH110 - 170		P2-Cal.C	20.0	20.0	07-Sep-20	29-Sep-20	-101.5		0.0							
ELS		P2-Cal.C	20.0	20.0	07-Sep-20	29-Sep-20	-101.5		0.0							
LC15955	Installation of sheetpile wall (146m)	P2-Cal.C	20.0	20.0	07-Sep-20	29-Sep-20	-101.5	0%	0.0							
SR2 CH170 - 250		P2-Cal.C	426.0	157.0	28-Feb-19 A	29-Dec-20	120.5		-118.0							
Structure SR2 CH 170 - 250 (U Trough A)		P2-Cal.C	426.0	157.0	28-Feb-19 A	29-Dec-20	120.5		-118.0							
LC17520	Construction of insitu Concrete Profile Barrier (CH180-CH250) (2 moulds) (NCE193 & NCE219)	P2-Cal.C	80.0	5.0	15-Apr-20 A	26-Jun-20	272.5	93.75%	20.0							
LC17510	Waterproofing, Backfilling and Remove sheetpile	P2-Cal.C	40.0	0.0	28-Feb-19 A	29-Dec-20	-79.5	100%	-504.0							
Road and Drainage & Utilities Works (P2 CH318 - 650 & SR2 CH100 - 310)		P2-Cal.C	325.0	325.0	30-Jul-20	01-Sep-21	-79.5		-3.0							
LC17560	Road and Drainage & Utilities Works (P2 CH318 - 500)	P2-Cal.C	300.0	300.0	30-Jul-20	03-Aug-21	-54.5	0%	0.0							
LC17590	Road and Drainage & Utilities Works (SR2 CH100 - 250)	P2-Cal.C	300.0	300.0	28-Aug-20	01-Sep-21	-79.5	0%	0.0							
Portion IV & VII		P2-Cal.C	59.0	59.0	20-Jun-20	29-Aug-20	-112.5		-10.0							
Construction of DN2100 stormwater at Portion IV & VII		P2-Cal.C	59.0	59.0	20-Jun-20	29-Aug-20	-112.5		-10.0							
Drainage works		P2-Cal.C	59.0	59.0	20-Jun-20	29-Aug-20	-112.5		-10.0							
SMH9101-SMH9103		P2-Cal.C	59.0	59.0	20-Jun-20	29-Aug-20	-112.5		-10.0							
LC17729	Construction of Temporary Traffic Decking above the ELS	P2-Cal.C	10.0	10.0	20-Jun-20	03-Jul-20	-112.5	0%	-10.0							
LC17739	Trench Excavation and Strut Installation for Construction of Dia. 900 Drain Pipe (SMH9102 to SMH9103)	P2-Cal.C	14.0	14.0	04-Jul-20	20-Jul-20	-112.5	0%	0.0							
LC17749	Bedding And Inspection	P2-Cal.C	5.0	5.0	21-Jul-20	25-Jul-20	-112.5	0%	0.0							
LC17759	Manhole construction and Pipe Laying (SMH9101 & 9102)	P2-Cal.C	20.0	20.0	27-Jul-20	18-Aug-20	-112.5	0%	0.0							
LC17799	Inspection & Backfill	P2-Cal.C	10.0	10.0	19-Aug-20	29-Aug-20	-112.5	0%	0.0							
TKO Town Centre South Reinstatement (PS Cl. 1.45)		P2-Cal.C	75.0	75.0	02-Jul-20	26-Sep-20	49.5		0.0							
LC17720	TTA application of road works (After handover of Area C)	P2-Cal.C	35.0	35.0	02-Jul-20	11-Aug-20	49.5	0%	0.0							
LC17721	TTA Implementation	P2-Cal.C	3.0	3.0	12-Aug-20	14-Aug-20	49.5	0%	0.0							
LC17722	Reinstatement of existing footpath	P2-Cal.C	30.0	30.0	15-Aug-20	18-Sep-20	49.5	0%	0.0							
LC17724	Gate Installation for separation of existing site office to public	P2-Cal.C	7.0	7.0	19-Sep-20	26-Sep-20	49.5	0%	0.0							
New Reclaimed Section			460.0	313.0	16-Nov-19 A	12-Jul-21	-35.5		-27.0							
Marine Works			247.0	86.0	02-Dec-19 A	30-Sep-20	191.5		-27.0							
Concrete Coping		P2-Cal.C	31.0	31.0	26-Aug-20	30-Sep-20	104.5		0.0							
Western Seawall		P2-Cal.C	31.0	31.0	26-Aug-20	30-Sep-20	104.5		0.0							
MC13595	Coping Area 6 (CH440-471W) (31m)	P2-Cal.C	4.0	4.0	26-Aug-20	29-Aug-20	56.5	0%	0.0							
MC13575	Coping Area 5 (CH371-440W) (89m)	P2-Cal.C	12.0	12.0	31-Aug-20	12-Sep-20	104.5	0%	0.0							
MC13555	Coping Area 4 (CH271-371W) (100m)	P2-Cal.C	15.0	15.0	14-Sep-20	30-Sep-20	104.5	0%	0.0							
Armour Protection			194.0	34.0	02-Dec-19 A	31-Jul-20	141.5		-27.0							
Laying of Underlayer (West)		P2-Cal.A	14.0	2.0	29-Jan-20 A	21-Jun-20	64.5		-131.0							
MC13685	Shortage of Armour (NCE264)	P2-Cal.A	14.0	2.0	29-Jan-20 A	21-Jun-20	64.5	85.71%	-131.0							
Laying of Armour Rock (West)		P2-Cal.C	169.0	33.0	03-Jan-20 A	31-Jul-20	141.5		-27.0							
MC13755	Armour CH440-500 (4735m3)	P2-Cal.C	15.0	10.0	11-May-20 A	04-Jul-20	100.5	33.33%	-31.0							

	Primary Baseline		Critical...
	Actual Work		Baselin...
	Remaining Work		Milesto...

NE/2015/02 Tseung Kwan O - Lam Tin Tunnel - Road P2 and Associated Works (Jun-20)

3 Monthly Rolling Programme Update
(Data Date : 20 Jun 2020)
Page : 7 of 12

Date	Revision	Checked	Approved
20-Jun-20			

Activity ID	Activity Name	Calendar	Original Duration	Planning Dur	Start	Finish	Total Float	Activity % Complete	Variance	Act. Duration	2020	Jun	Jul	Aug	Sep	Oct
MC13735	Armour CH375-440 (4882m3)	P2-Cal.C	15.0	15.0	15-May-20 A	13-Jul-20	130.5	0%	-34.0				Armour CH375-440 (4882m3)			
MC13715	Armour CH311-375 (4767m3)	P2-Cal.C	15.0	15.0	14-Jul-20	30-Jul-20	130.5	0%	0.0				Armour CH311-375 (4767m3)			
MC13695	Armour CH271-311 (1833m3)	P2-Cal.C	8.0	1.0	03-Jan-20 A	31-Jul-20	141.5	87.5%	-162.0				Armour CH271-311 (1833m3)			
Laying of Underlayer (East)		P2-Cal.C	152.0	11.0	02-Dec-19 A	06-Jul-20	53.5		-21.0							
MC13795	Underlayer CH190-250 (1218m3)	P2-Cal.C	10.0	1.0	02-Dec-19 A	22-Jun-20	53.5	90%	-153.0				Underlayer CH190-250 (1218m3)			
MC13775	Underlayer CH71-190 (berm stone 820m3)	P2-Cal.C	15.0	10.0	09-May-20 A	06-Jul-20	53.5	33.33%	-33.0				Underlayer CH71-190 (berm stone 820m3)			
Laying of Armour Rock (East)		P2-Cal.C	131.0	20.0	13-Jan-20 A	16-Jul-20	74.5		-44.0							
MC13955	Armour CH375-440 (4882m3)	P2-Cal.C	12.0	2.0	14-Mar-20 A	23-Jun-20	85.5	83.33%	-69.0				Armour CH375-440 (4882m3)			
MC13935	Armour CH300-375 (4767m3)	P2-Cal.C	12.0	5.0	06-Feb-20 A	27-Jun-20	79.5	58.33%	-104.0				Armour CH300-375 (4767m3)			
MC13915	Armour CH250-300 (3181m3)	P2-Cal.C	10.0	1.0	13-Jan-20 A	29-Jun-20	79.5	90%	-125.0				Armour CH250-300 (3181m3)			
MC13895	Armour CH190-250 (2310m3)	P2-Cal.C	9.0	9.0	07-Jul-20	16-Jul-20	74.5	0%	0.0				Armour CH190-250 (2310m3)			
Modification Works of Existing Seawall		P2-Cal.C	90.0	16.0	19-Mar-20 A	10-Jul-20	261.5		-21.0							
MC14185	Installation of Guidance Rail	P2-Cal.C	4.0	1.0	19-Mar-20 A	20-Jun-20	261.5	75%	-71.0				Installation of Guidance Rail			
MC14245	Construction of Mass Concrete Coping	P2-Cal.C	10.0	5.0	19-May-20 A	27-Jun-20	261.5	50%	-24.0				Construction of Mass Concrete Coping			
MC14265	Reinstatement of 1.5m thick rock armour type 5	P2-Cal.C	3.0	3.0	29-Jun-20	02-Jul-20	261.5	0%	0.0				Reinstatement of 1.5m thick rock armour type 5			
MC14285	Reinstatement of 2.3m thick rock armour type 6	P2-Cal.C	3.0	3.0	03-Jul-20	06-Jul-20	261.5	0%	0.0				Reinstatement of 2.3m thick rock armour type 6			
MC14305	Grade 400 Rock fill	P2-Cal.C	4.0	4.0	07-Jul-20	10-Jul-20	261.5	0%	0.0				Grade 400 Rock fill			
Land Works		P2-Cal.C	460.0	313.0	16-Nov-19 A	12-Jul-21	-35.5		-27.0							
Road P2 Underpass (CH105-CH318)		P2-Cal.C	460.0	313.0	16-Nov-19 A	12-Jul-21	-35.5		-27.0							
Instrumentation and Monitoring for Road P2 Structure Construction		P2-Cal.C	460.0	313.0	16-Nov-19 A	12-Jul-21	-35.5		-27.0							
LC17760	Monitoring of Instrumentation	P2-Cal.C	460.0	313.0	16-Nov-19 A	12-Jul-21	-35.5	31.96%	-27.0							
Underpass		P2-Cal.C	185.0	84.0	17-Feb-20 A	28-Sep-20	-138.5		-9.0							
Underpass P2 CH 105 - 318		P2-Cal.C	185.0	84.0	17-Feb-20 A	28-Sep-20	-138.5		-9.0							
ELS		P2-Cal.C	163.0	62.0	17-Feb-20 A	02-Sep-20	-185.5		-14.0							
LC18000-6	Grout Curtain for Sheet Pile Wall (NCE265)	P2-Cal.C	16.0	2.0	17-Feb-20 A	22-Jun-20	-197.5	87.5%	-87.0				Grout Curtain for Sheet Pile Wall (NCE265)			
LC30360	Excavation to -5.5mPD at P2 CH270-CH318 (3648m3) (1000m3/day)	P2-Cal.C	7.0	7.0	20-Jun-20	29-Jun-20	-200.5	0%	0.0				Excavation to -5.5mPD at P2 CH270-CH318 (3648m3) (1000m3/day)			
LC30270	Excavation to -8.21--8.44mPD at P2 CH223-CH270 (17064m3) (1000m3/day)	P2-Cal.C	26.0	7.0	23-May-20 A	29-Jun-20	-200.5	73.08%	-5.0				Excavation to -8.21--8.44mPD at P2 CH223-CH270 (17064m3) (1000m3/day)			
LC30091	Excavation to -2.5mPD at P2 CH105-132 @ -2.5mPD (2835m3)	P2-Cal.C	5.0	5.0	06-Jul-20	10-Jul-20	-159.5	0%	0.0				Excavation to -2.5mPD at P2 CH105-132 @ -2.5mPD (2835m3)			
LC30300	Construction of Blinding Layer at P2 CH223-CH270	P2-Cal.C	10.0	10.0	30-Jun-20	11-Jul-20	-200.5	0%	0.0				Construction of Blinding Layer at P2 CH223-CH270			
LC30370	Installation of 3rd layer strut/waler at P2 CH270-CH318@ -3.5--4.5mPD	P2-Cal.C	14.0	14.0	27-Jun-20	14-Jul-20	-200.5	0%	0.0				Installation of 3rd layer strut/waler at P2 CH270-CH318@ -3.5--4.5mPD			
LC30060	Excavation to -5.5mPD at P2 CH132-CH223 (13623m3) (1000m3/day)	P2-Cal.C	18.0	18.0	23-Jun-20	15-Jul-20	-185.5	0%	0.0				Excavation to -5.5mPD at P2 CH132-CH223 (13623m3) (1000m3/day)			
LC30092	Installation of 2nd Layer Strut/waler at P2 CH105-132 @ -1.5mPD	P2-Cal.C	5.0	5.0	11-Jul-20	16-Jul-20	-159.5	0%	0.0				Installation of 2nd Layer Strut/waler at P2 CH105-132 @ -1.5mPD			
LC30380	Excavation to Fomration Level (-6.34--8.41mPD) at P2 CH270-CH318 (2948m3) (1000m3/day)	P2-Cal.C	4.0	4.0	15-Jul-20	18-Jul-20	-200.5	0%	0.0				Excavation to Fomration Level (-6.34--8.41mPD) at P2 CH270-CH318 (2948m3) (1000m3/day)			
LC30390	Construction of Blinding Layer at P2 CH270-CH318	P2-Cal.C	10.0	10.0	20-Jul-20	30-Jul-20	-200.5	0%	0.0				Construction of Blinding Layer at P2 CH270-CH318			
LC30093	Excavation to -5.5mPD at P2 CH105-132 @ -5.5mPD (2835m3)	P2-Cal.C	5.0	5.0	29-Jul-20	03-Aug-20	-169.5	0%	0.0				Excavation to -5.5mPD at P2 CH105-132 @ -5.5mPD (2835m3)			
LC30070	Installation of 3rd layer strut/waler at P2 CH132-CH223@ -3.5--4.5mPD	P2-Cal.C	18.0	18.0	16-Jul-20	05-Aug-20	-185.5	0%	0.0				Installation of 3rd layer strut/waler at P2 CH132-CH223@ -3.5--4.5mPD			
LC30094	Installation of 3rd Layer Strut/waler at P2 CH105-132 @ -3.5--3.6mPD	P2-Cal.C	5.0	5.0	04-Aug-20	08-Aug-20	-169.5	0%	0.0				Installation of 3rd Layer Strut/waler at P2 CH105-132 @ -3.5--3.6mPD			
LC30080	Excavation to Fomration Level (-6.0--8.2mPD) at P2 CH132-CH223 (16674m3) (1000m3/day)	P2-Cal.C	19.0	19.0	06-Aug-20	27-Aug-20	-185.5	0%	0.0				Excavation to Fomration Level (-6.0--8.2mPD) at P2 CH132-CH223 (16674m3) (1000m3/day)			

- Primary Baseline
- Actual Work
- Remaining Work
- Critical...
- Baselin...
- Milesto...

NE/2015/02 Tseung Kwan O - Lam Tin Tunnel - Road P2 and Associated Works (Jun-20)

3 Monthly Rolling Programme Update
(Data Date : 20 Jun 2020)
Page : 8 of 12

Date	Revision	Checked	Approved
20-Jun-20			

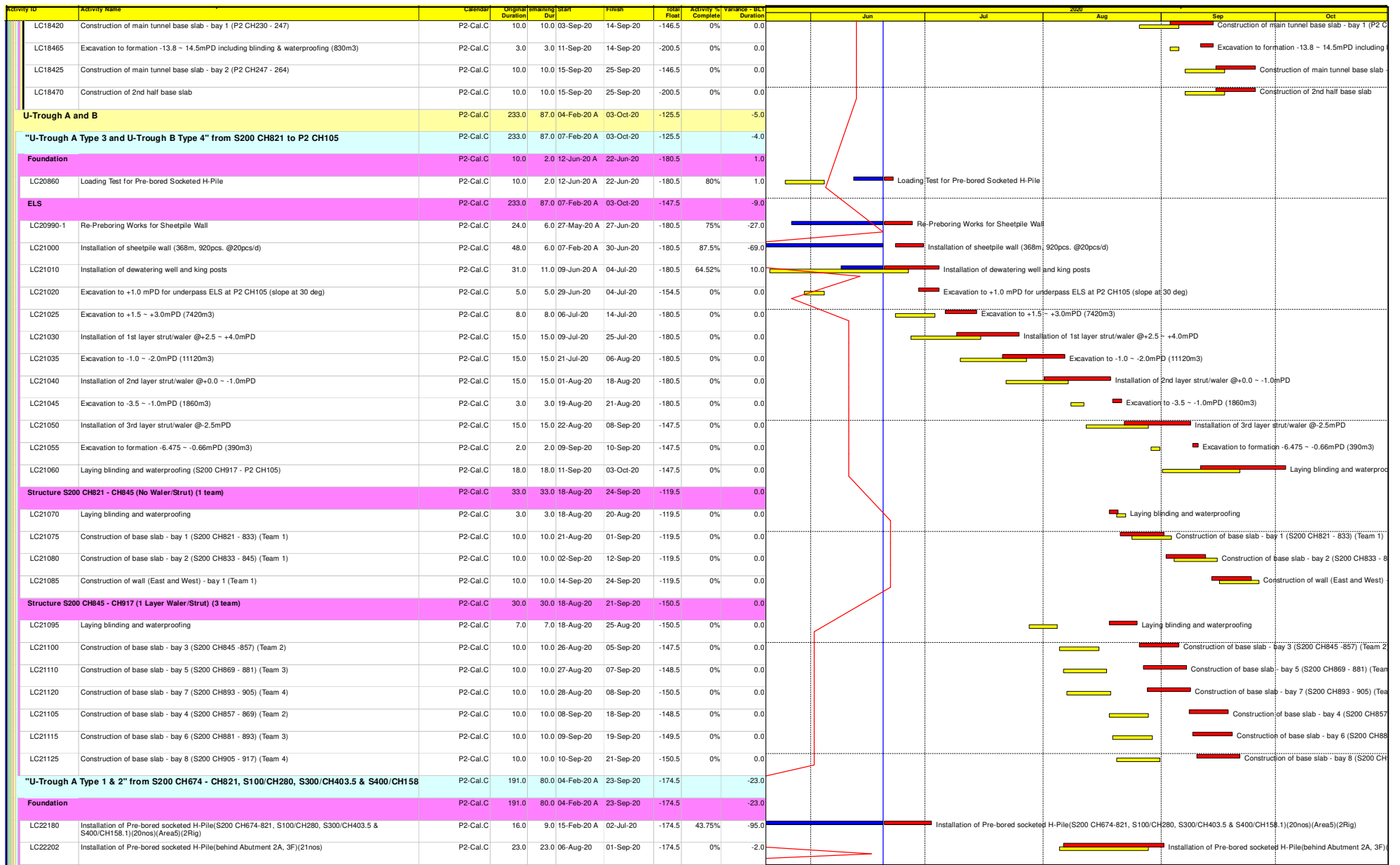
Activity ID	Activity Name	Calendar	Original Duration	Planning Dur	Start	Finish	Total Float	Activity % Complete	Variance	SLC Duration	2020										
											Jun	Jul	Aug	Sep	Oct						
LC30095	Excavation to Formation Level (-6.0mPD to -6.74mPD) at P2 CH105-132 (822m3) and Construction of Blinding	P2-Cal.C	5.0	5.0	22-Aug-20	27-Aug-20	-180.5	0%		0.0											
LC30090	Construction of Blinding Layer at P2 CH132-CH223	P2-Cal.C	5.0	5.0	28-Aug-20	02-Sep-20	-185.5	0%		0.0											
Base Slab (5 Teams)																					
LC18105	Construction of base slab - bay 11 (P2 CH278 - 292) (Team 1)	P2-Cal.C	10.0	10.0	31-Jul-20	11-Aug-20	-200.5	0%		0.0											
LC18112	Construction of base slab - bay 13 (P2 CH305 - 318) (Team 2)	P2-Cal.C	10.0	10.0	31-Jul-20	11-Aug-20	-200.5	0%		0.0											
LC18100	Construction of base slab - bay 10 (P2 CH264 - 278) (Team 1)	P2-Cal.C	10.0	10.0	12-Aug-20	22-Aug-20	-200.5	0%		0.0											
LC18110	Construction of base slab - bay 12 (P2 CH292 - 305) (Team 2)	P2-Cal.C	10.0	10.0	12-Aug-20	22-Aug-20	-200.5	0%		0.0											
LC18115	Mass concrete fill between base slab and sheet pile (bay 10 - 13) + 4 days concrete strength	P2-Cal.C	6.0	6.0	24-Aug-20	29-Aug-20	-200.5	0%		0.0											
LC18055	Construction of base slab - bay 1 (P2 CH105 - 118) (Team 1)	P2-Cal.C	10.0	10.0	28-Aug-20	08-Sep-20	-180.5	0%		0.0											
LC18095	Construction of base slab - bay 9 (P2 CH216 - 230) (Team 5)	P2-Cal.C	10.0	10.0	03-Sep-20	14-Sep-20	-185.5	0%		0.0											
LC18065	Construction of base slab - bay 3 (P2 CH132 - 146) (Team 2)	P2-Cal.C	10.0	10.0	03-Sep-20	14-Sep-20	-185.5	0%		0.0											
LC18075	Construction of base slab - bay 5 (P2 CH160 - 174) (Team 3)	P2-Cal.C	10.0	10.0	03-Sep-20	14-Sep-20	-185.5	0%		0.0											
LC18085	Construction of base slab - bay 7 (P2 CH188 - 202) (Team 4)	P2-Cal.C	10.0	10.0	03-Sep-20	14-Sep-20	-185.5	0%		0.0											
LC18125	Removal of 3rd waler/strut @ -4.0 - -5.0mPD (bay 10 -13)	P2-Cal.C	15.0	15.0	31-Aug-20	16-Sep-20	-200.5	0%		0.0											
LC18090	Construction of base slab - bay 8 (P2 CH202 - 216) (Team 4)	P2-Cal.C	10.0	10.0	15-Sep-20	25-Sep-20	-185.5	0%		0.0											
LC18060	Construction of base slab - bay 2 (P2 CH118 - 132) (Team 1)	P2-Cal.C	10.0	10.0	15-Sep-20	25-Sep-20	-185.5	0%		0.0											
LC18070	Construction of base slab - bay 4 (P2 CH146 - 160) (Team 2)	P2-Cal.C	10.0	10.0	15-Sep-20	25-Sep-20	-185.5	0%		0.0											
LC18080	Construction of base slab - bay 6 (P2 CH174 - 188) (Team 3)	P2-Cal.C	10.0	10.0	15-Sep-20	25-Sep-20	-185.5	0%		0.0											
Wall and Roof Slab (5 Teams)																					
LC18185	Construction of pour wall (1st East, West and Mid interim level -2.2mPD) - bay 11 (Team 1)	P2-Cal.C	10.0	10.0	17-Sep-20	28-Sep-20	-200.5	0%		0.0											
LC18192	Construction of pour wall (1st East, West and Mid interim level -2.2mPD) - bay 13 (Team 2)	P2-Cal.C	10.0	10.0	17-Sep-20	28-Sep-20	-200.5	0%		0.0											
Fixed Foam Room/Sump Pit Room/Stormwater Plant Room																					
Fixed Foam Room/Sump Pit Room																					
LC18370	Excavation to formation -10.6mPD including blinding & waterproofing (1190m3)	P2-Cal.C	5.0	5.0	13-Jul-20	17-Jul-20	-127.5	0%		0.0											
LC18372	Construction of structural blinding	P2-Cal.C	7.0	7.0	18-Jul-20	25-Jul-20	-127.5	0%		0.0											
LC18375	Construction of base slab	P2-Cal.C	10.0	10.0	27-Jul-20	06-Aug-20	-127.5	0%		0.0											
LC18385	Construction of Eastern wall up to -7.3mPD	P2-Cal.C	7.0	7.0	07-Aug-20	14-Aug-20	-127.5	0%		0.0											
LC18390	Construction of Western wall up to -5.0mPD	P2-Cal.C	10.0	10.0	15-Aug-20	26-Aug-20	-127.5	0%		0.0											
LC18395	Installation of waterproofing works to 1st wall	P2-Cal.C	7.0	7.0	27-Aug-20	03-Sep-20	-121.5	0%		0.0											
LC18405	Erection of scaffold/lifework for 1st slab construction	P2-Cal.C	7.0	7.0	27-Aug-20	03-Sep-20	-127.5	0%		0.0											
LC18400	Backfilling works for Concrete Infill (1st -10.1mPD to -5.3mPD)	P2-Cal.C	4.0	4.0	04-Sep-20	08-Sep-20	-121.5	0%		0.0											
LC18410	Construction of 2nd pour wall and slab up to -6.0mPD	P2-Cal.C	10.0	10.0	04-Sep-20	15-Sep-20	-127.5	0%		0.0											
Stormwater Plant Room																					
LC18415	Open cut excavation to -13.8mPD including blinding & waterproofing (3260m3)	P2-Cal.C	13.0	13.0	13-Jul-20	27-Jul-20	-200.5	0%		0.0											
LC18416	Construction of part of base slab	P2-Cal.C	10.0	10.0	28-Jul-20	07-Aug-20	-200.5	0%		-10.0											
LC18417	Construction of wall up to -7.3mPD	P2-Cal.C	10.0	10.0	08-Aug-20	19-Aug-20	-200.5	0%		-10.0											
LC18418	Cast mass concrete fill / vertical blinding (2 pours)	P2-Cal.C	12.0	12.0	20-Aug-20	02-Sep-20	-200.5	0%		-12.0											
LC18460	Installation of 3rd layer strut/waler @ -10.0mPD	P2-Cal.C	7.0	7.0	03-Sep-20	10-Sep-20	-200.5	0%		0.0											

- Primary Baseline
- Critical...
- Actual Work
- Baselin...
- Remaining Work
- Milesto...

NE/2015/02 Tseung Kwan O - Lam Tin
Tunnel - Road P2 and Associated
Works (Jun-20)

3 Monthly Rolling Programme Update
(Data Date : 20 Jun 2020)
Page : 9 of 12

Date	Revision	Checked	Approved
20-Jun-20			

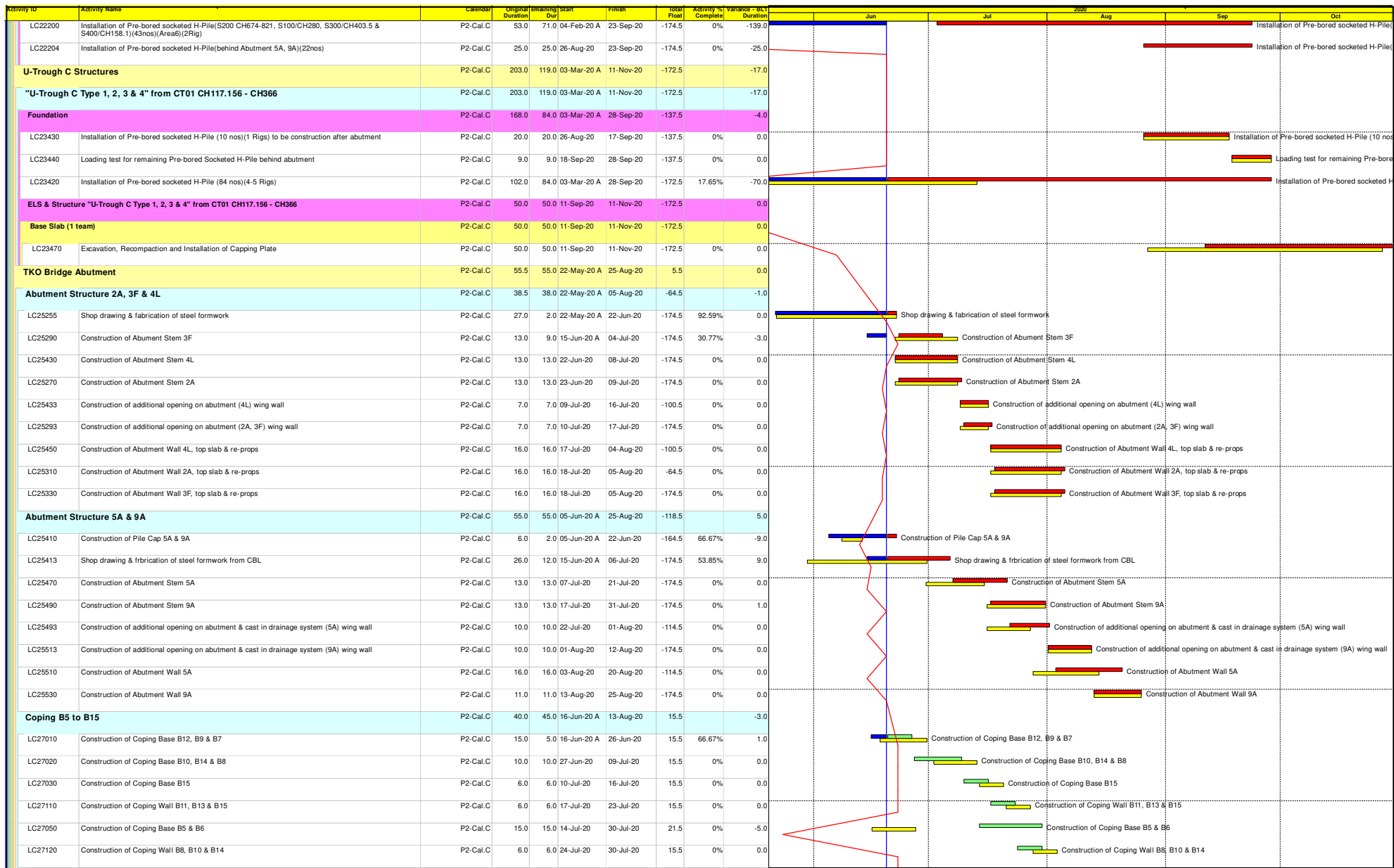


- Primary Baseline
- Critical...
- Actual Work
- Baselin...
- Remaining Work
- Milesto...

NE/2015/02 Tseung Kwan O - Lam Tin Tunnel - Road P2 and Associated Works (Jun-20)

3 Monthly Rolling Programme Update
(Data Date : 20 Jun 2020)
Page : 10 of 12

Date	Revision	Checked	Approved
20-Jun-20			



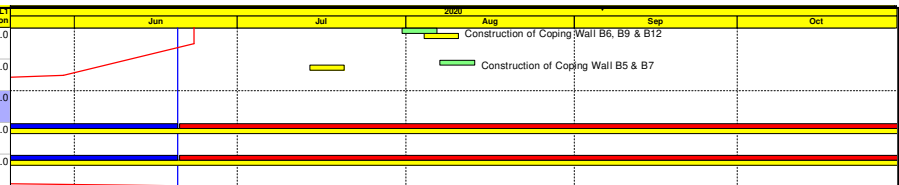
- Primary Baseline
- Critical...
- Actual Work
- Remaining Work
- Baselin...
- Milesto...

NE/2015/02 Tseung Kwan O - Lam Tin
Tunnel - Road P2 and Associated
Works (Jun-20)

3 Monthly Rolling Programme Update
(Data Date : 20 Jun 2020)
Page : 11 of 12

Date	Revision	Checked	Approved
20-Jun-20			

Activity ID	Activity Name	Calendar	Original Duration	Remaining Dur	Start	Finish	Total Float	Activity % Complete	Variance	Act Duration
LC27130	Construction of Coping Wall B6, B9 & B12	P2-Cal.C	6.0	6.0	31-Jul-20	06-Aug-20	15.5	0%	0.0	
LC27100	Construction of Coping Wall B5 & B7	P2-Cal.C	6.0	6.0	07-Aug-20	13-Aug-20	15.5	0%	0.0	
Section 4 of the Works - Preservation and Protection of Existing Trees										
LC25260	Preservation and Protection of Existing Trees	P2-Cal.A	1563.0	544.0	12-Jan-17 A	15-Dec-21	-200.5		-236.0	
LC25280	Nursery Transplanted Trees at the Contractor's holding nursery	P2-Cal.A	1451.0	544.0	12-Jan-17 A	15-Dec-21	-200.5	62.51%	-348.0	
			1177.0	544.0	28-Apr-17 A	15-Dec-21	-200.5	53.78%	-516.0	



- Primary Baseline
- Actual Work
- Remaining Work
- Critical...
- Baselin...
- Milesto...

NE/2015/02 Tseung Kwan O - Lam Tin Tunnel - Road P2 and Associated Works (Jun-20)

3 Monthly Rolling Programme Update
(Data Date : 20 Jun 2020)
Page : 12 of 12

Date	Revision	Checked	Approved
20-Jun-20			

NE2017/02

High Level 3 Months Look Ahead Programme			
Activities	Sep-20	Oct-20	Nov-20
Trial pit			
Underground utilities detection			
Temporary traffic arrangement Setup			
Construction of drainage and watermain			
Pile Cap construction			
Pre-bored Socket-H Pile			
Asphalt Paving			
Pier, Staircase and lift shaft construction			

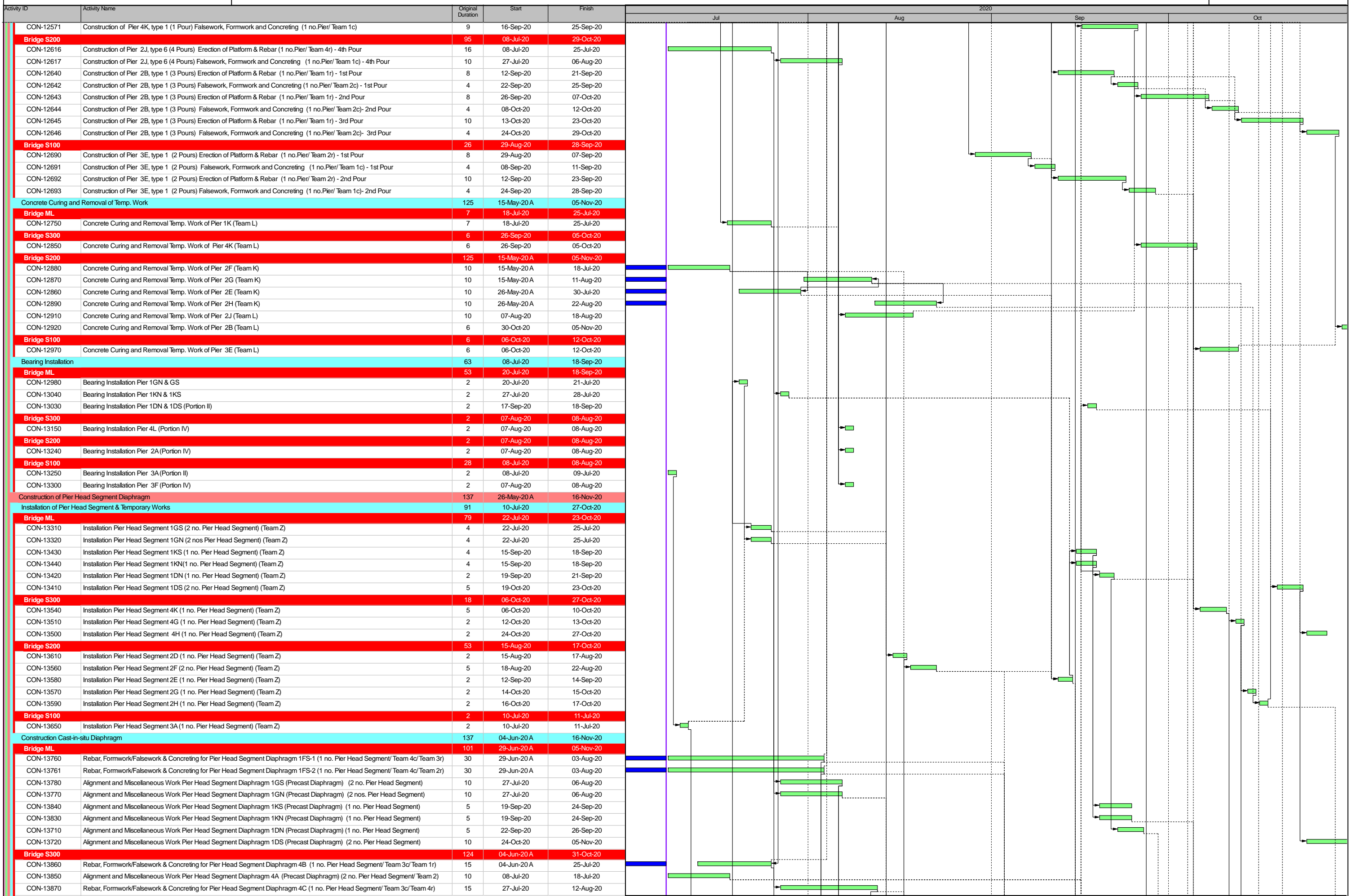
Activity ID	Activity Name	Planned Duration	Remaining Duration	Schedule % Complete	Start	Finish	Total Float	Classic Schedule Layout																			
								Jun	Jul	Aug	Sep	Oct	Nov	Dec	Jan	Feb	Mar										
NE/2017/06-1 NE/2017/06 TKO-LTT TCSS_3MRP																											
NE/2017/06-1.CW Contract Award / Commencement of Works																											
NE/2017/06-1.AD Access Date																											
NE/2017/06-1.KD Key Date and Stages / Sections of the Achievement																											
NE/2017/06-1.MD Cost Centre Milestone Dates																											
NE/2017/06-1.MD.1 General																											
NE/2017/06-1.MD.1.1 CC B - Central System - TKOLTT																											
DWP8840	Acceptance of Final System Proposal for Works	0	0	0%	20-Jul-20	20-Jul-20	343																				
NE/2017/06-1.MD.1.2 CC B1 - Central System - CBL																											
DWP8900	Acceptance of Final System Proposal for Works	0	0	0%	20-Jul-20	20-Jul-20	775																				
NE/2017/06-1.MD.1.3 CC C - Traffic Control Devices - TKOLTT																											
DWP8960	Acceptance of Final System Proposal for Works	0	0	0%	20-Jul-20	20-Jul-20	343																				
NE/2017/06-1.MD.1.4 CC C1 - Traffic Control Devices - CBL																											
DWP9020	Acceptance of Final System Proposal for Works	0	0	0%	20-Jul-20	20-Jul-20	775																				
NE/2017/06-1.MD.1.5 CC D - Communication System - TKOLTT																											
DWP9150	Acceptance of Factory Acceptance Tests of all equipment for Works	0	0	0%		04-Oct-20	267																				
DWP9140	Acceptance of Final System Proposal for Works	0	0	0%	20-Jul-20	20-Jul-20	343																				
NE/2017/06-1.MD.1.6 CC D1 - Communication System - CBL																											
DWP9090	Acceptance of Factory Acceptance Tests of all equipment for Works	0	0	0%		04-Oct-20	699																				
DWP9080	Acceptance of Final System Proposal for Works	0	0	0%	20-Jul-20	20-Jul-20	775																				
NE/2017/06-1.MD.1.7 CC E - CCTV System - TKOLTT																											
DWP9200	Acceptance of Final System Proposal for Works	0	0	0%	20-Jul-20	20-Jul-20	343																				
NE/2017/06-1.MD.1.8 CC E1 - CCTV System - CBL																											
DWP9260	Acceptance of Final System Proposal for Works	0	0	0%	20-Jul-20	20-Jul-20	775																				
NE/2017/06-1.MD.1.9 CC F - Building PABX System - TKOLTT																											
DWP9320	Acceptance of Final System Proposal for Works	0	0	0%	20-Jul-20	20-Jul-20	343																				
NE/2017/06-1.MD.1.11 CC G - ET System - TKOLTT																											
DWP9440	Acceptance of Final System Proposal for Works	0	0	0%	20-Jul-20	20-Jul-20	343																				
NE/2017/06-1.MD.1.10 CC H - PA System - TKOLTT																											
DWP9380	Acceptance of Final System Proposal for Works	0	0	0%	20-Jul-20	20-Jul-20	343																				
NE/2017/06-1.MD.1.12 CC I - Radio System - TKOLTT																											
DWP9510	Acceptance of Factory Acceptance Tests of all equipment for Works	0	0	0%		22-Oct-20	248																				
DWP9500	Acceptance of Final System Proposal for Works	0	0	0%	20-Jul-20	20-Jul-20	343																				
NE/2017/06-1.MD.1.13 CC J - Detection System - TKOLTT																											
DWP9560	Acceptance of Final System Proposal for Works	0	0	0%	20-Jul-20	20-Jul-20	343																				
NE/2017/06-1.MD.1.15 CC J1 - Detection System - CBL																											
DWP9680	Acceptance of Final System Proposal for Works	0	0	0%	20-Jul-20	20-Jul-20	775																				
NE/2017/06-1.MD.1.14 CC K - Manual fallback System - TKOLTT																											
DWP9620	Acceptance of Final System Proposal for Works	0	0	0%	20-Jul-20	20-Jul-20	343																				
NE/2017/06-1.MD.1.16 CC L - Operation Facilities - TKOLTT																											
DWP9750	Acceptance of Factory Acceptance Tests of all equipment for Works	0	0	0%		01-Oct-20	270																				
DWP9740	Acceptance of Final System Proposal for Works	0	0	0%	20-Jul-20	20-Jul-20	343																				
NE/2017/06-1.MD.1.17 CC M - Power Distribution System - TKOLTT																											
DWP9810	Acceptance of Factory Acceptance Tests of all equipment for Works	0	0	0%		23-Oct-20	247																				
DWP9800	Acceptance of Final System Proposal for Works	0	0	0%	20-Jul-20	20-Jul-20	343																				
NE/2017/06-1.MD.1.18 CC M1 - Power Distribution System - CBL																											
DWP9870	Acceptance of Factory Acceptance Tests of all equipment for Works	0	0	0%		23-Oct-20	679																				
DWP9860	Acceptance of Final System Proposal for Works	0	0	0%	20-Jul-20	20-Jul-20	775																				
NE/2017/06-1.MD.1.19 CC N - Speed Enforcement System - TKOLTT																											
DWP9930	Acceptance of Factory Acceptance Tests of all equipment for Works	0	0	0%		15-Oct-20	255																				
DWP9920	Acceptance of Final System Proposal for Works	0	0	0%	20-Jul-20	20-Jul-20	343																				
DWP9910	Acceptance of Preliminary System Proposal for Works	0	0	0%	20-Jul-20	20-Jul-20	343																				
NE/2017/06-1.MD.1.20 CC N1 - Speed Enforcement System - CBL																											
DWP10410	Acceptance of Factory Acceptance Tests of all equipment for Works	0	0	0%		15-Oct-20	687																				
DWP10400	Acceptance of Final System Proposal for Works	0	0	0%	20-Jul-20	20-Jul-20	775																				
DWP10390	Acceptance of Preliminary System Proposal for Works	0	0	0%	20-Jul-20	20-Jul-20	775																				
NE/2017/06-1.MD.1.21 CC O - Government Optical Fibre System - TKOLTT																											
DWP10050	Acceptance of Factory Acceptance Tests of all equipment for Works	0	0	0%		08-Oct-20	262																				
DWP10040	Acceptance of Final System Proposal for Works	0	0	0%	20-Jul-20	20-Jul-20	343																				
NE/2017/06-1.MD.1.22 CC O1 - Government Optical Fibre System - CBL																											
DWP10110	Acceptance of Factory Acceptance Tests of all equipment for Works	0	0	0%		08-Oct-20	694																				
DWP10100	Acceptance of Final System Proposal for Works	0	0	0%	20-Jul-20	20-Jul-20	775																				
NE/2017/06-1.MD.1.23 CC P - Training and Documentation - TKOLTT																											
NE/2017/06-1.MD.1.24 CC P1 - Training and Documentation - CBL																											
NE/2017/06-1.MD.1.25 CC Q - Comprehensive Maintenance Services and DLP - TKOLTT																											
NE/2017/06-1.MD.1.26 CC Q1 - Comprehensive Maintenance Services and DLP - CBL																											
NE/2017/06-1.1 Preliminary																											
NE/2017/06-1.1.A0 Preliminary and General																											
NE/2017/06-1.1.A0.3 Management System																											
NE/2017/06-1.1.A0.3.QP Quality Management Plan																											
NE/2017/06-1.1.A0.3.2 Safety Management																											
GEN.0.05C	Prepare and submit the Materials - Personal Protective Equipment for Resident Engineer	12	12	0%	20-Jul-20	01-Aug-20	1220																				
GEN.0.05D	Prepare and submit the Site Traffic Safety Management Plan	17	17	0%	20-Jul-20	06-Aug-20	1215																				
NE/2017/06-1.1.A0.3.1 Environmental Management Plan																											
NE/2017/06-1.1.A0.3.3 Sub-Contract Management																											
NE/2017/06-1.1.A0.3.4 Risk Management																											
NE/2017/06-1.1.A0.3.5 Software Management																											
NE/2017/06-1.1.A0.3.6 Interface Management																											

Activity ID	Activity Name	Planned Duration	Remaining Duration	Schedule % Complete	Start	Finish	Total Float	Qtr 1, 2021														
								Jun	Jul	Aug	Sep	Oct	Nov	Dec	Jan	Feb	Mar					
NE/2017/06-1.DS Design Stage		82	82	0%	20-Jul-20	25-Oct-20	953															
NE/2017/06-1.DS.PSP Prepare / Submission of PSP for TKO-LTT TCSS and CBL TCSS		0	0	0%			0															
NE/2017/06-1.DS.FSP Prepare / Submission of FSP For TKO-LTT TCSS and CBL TCSS		0	0	0%			0															
NE/2017/06-1.DS.FDS Preparation of Functional Design Specification (FDS)		24	24	0%	20-Jul-20	16-Aug-20	0															
NE/2017/06-1.DS.FDS.1 Preparation of Software Project Plan (SPP)		0	0	0%			0															
NE/2017/06-1.DS.FDS.2 Preparation of Software Architect Document		0	0	0%			0															
NE/2017/06-1.DS.FDS.3 Preparation of Software requirement Specification		0	0	0%			0															
NE/2017/06-1.DS.FDS.4 Preparation & Submission of Function Design Specification (FDS)		28	28	0%	20-Jul-20	16-Aug-20	1															
DWP8250 Approval of FDS		7	7	0%	10-Aug-20	16-Aug-20	1															
DWP8230 Comment on FDS / Discussion with Engineer		7	7	0%	27-Jul-20	02-Aug-20	1															
DWP7730 Preparation of Submission of Function Design Specification (FDS)		7	7	0%	20-Jul-20	26-Jul-20	1															
DWP8240 Resubmission of FDS		7	7	0%	03-Aug-20	09-Aug-20	1															
NE/2017/06-1.DS.SWD Software Development (except GUI) for TKO-LTT TCSS and CBL TCSS		9	9	0%	20-Jul-20	30-Jul-20	103															
DWP7810 Completion of SW Coding Validation		0	0	0%	30-Jul-20	30-Jul-20	124															
DWP7690 Completion of SW Validation Report		0	0	0%	20-Jul-20	20-Jul-20	124															
DWP7820 Software Development Completion		0	0	0%	30-Jul-20	30-Jul-20	124															
DWP7700 System Integration Test / Complete SW Coding Validation		10	10	0%	20-Jul-20	29-Jul-20	124															
NE/2017/06-1.DS.SWD.2 Allocation of New Functionality to Existing or New Modules		0	0	0%			0															
NE/2017/06-1.DS.SWD.6 Traffic Plan Coding		0	0	0%			0															
NE/2017/06-1.DS.GUI GUI Development for TKO-LTT TCSS and CBL TCSS		50	50	0%	20-Jul-20	08-Sep-20	1182															
DWP2530 Development of Page Based Display		50	50	0%	20-Jul-20	07-Sep-20	84															
DWP2540 GUI Development Completion		0	0	0%	08-Sep-20	08-Sep-20	84															
DWP2520 Prpulate Base Map with Icons		50	50	0%	20-Jul-20	07-Sep-20	1182															
NE/2017/06-1.DS.FAT Preparation / Submission of FAT Procedures		70	70	0%	20-Jul-20	27-Sep-20	179															
NE/2017/06-1.DS.FAT.1 Central System		42	42	0%	20-Jul-20	30-Aug-20	92															
DWP2580 Approval of FAT Procedure		28	28	0%	03-Aug-20	30-Aug-20	92															
DWP2570 Resubmission of FAT Procedure		14	14	0%	20-Jul-20	02-Aug-20	92															
NE/2017/06-1.DS.FAT.2 Traffic Control Devices		42	42	0%	20-Jul-20	30-Aug-20	88															
DWP2620 Approval of FAT Procedure		28	28	0%	03-Aug-20	30-Aug-20	88															
DWP2610 Resubmission of FAT Procedure		14	14	0%	20-Jul-20	02-Aug-20	88															
NE/2017/06-1.DS.FAT.3 Communication System		28	28	0%	03-Aug-20	30-Aug-20	88															
DWP2660 Approval of FAT Procedure		28	28	0%	03-Aug-20	30-Aug-20	88															
NE/2017/06-1.DS.FAT.4 CCTV System		42	42	0%	20-Jul-20	30-Aug-20	74															
DWP2700 Approval of FAT Procedure		28	28	0%	03-Aug-20	30-Aug-20	74															
DWP2690 Resubmission of FAT Procedure		14	14	0%	20-Jul-20	02-Aug-20	74															
NE/2017/06-1.DS.FAT.5 Building PABX System		42	42	0%	20-Jul-20	30-Aug-20	79															
DWP2740 Approval of FAT Procedure		28	28	0%	03-Aug-20	30-Aug-20	79															
DWP2730 Resubmission of FAT Procedure		14	14	0%	20-Jul-20	02-Aug-20	79															
NE/2017/06-1.DS.FAT.6 Emergency Telephone System		42	42	0%	20-Jul-20	30-Aug-20	83															
DWP2780 Approval of FAT Procedure		28	28	0%	03-Aug-20	30-Aug-20	83															
DWP2770 Resubmission of FAT Procedure		14	14	0%	20-Jul-20	02-Aug-20	83															
NE/2017/06-1.DS.FAT.7 Public Address System		42	42	0%	20-Jul-20	30-Aug-20	86															
DWP2820 Approval of FAT Procedure		28	28	0%	03-Aug-20	30-Aug-20	86															
DWP2810 Resubmission of FAT Procedure		14	14	0%	20-Jul-20	02-Aug-20	86															
NE/2017/06-1.DS.FAT.8 Radio System		42	42	0%	20-Jul-20	30-Aug-20	67															
DWP2860 Approval of FAT Procedure		28	28	0%	03-Aug-20	30-Aug-20	67															
DWP2850 Resubmission of FAT Procedure		14	14	0%	20-Jul-20	02-Aug-20	67															
NE/2017/06-1.DS.FAT.9 Detection System		42	42	0%	20-Jul-20	30-Aug-20	76															
DWP2900 Approval of FAT Procedure		28	28	0%	03-Aug-20	30-Aug-20	76															
DWP2890 Resubmission of FAT Procedure		14	14	0%	20-Jul-20	02-Aug-20	76															
NE/2017/06-1.DS.FAT.10 Manual Fallback System		42	42	0%	17-Aug-20	27-Sep-20	163															
DWP2940 Approval of FAT Procedure		28	28	0%	31-Aug-20	27-Sep-20	163															
DWP2930 Resubmission of FAT Procedure		14	14	0%	17-Aug-20	30-Aug-20	163															
NE/2017/06-1.DS.FAT.11 Operation Facilities		42	42	0%	17-Aug-20	27-Sep-20	135															
DWP2980 Approval of FAT Procedure		28	28	0%	31-Aug-20	27-Sep-20	135															
DWP2970 Resubmission of FAT Procedure		14	14	0%	17-Aug-20	30-Aug-20	135															
NE/2017/06-1.DS.FAT.12 Power Distribution System		42	42	0%	17-Aug-20	27-Sep-20	44															
DWP3020 Approval of FAT Procedure		28	28	0%	31-Aug-20	27-Sep-20	44															
DWP3010 Resubmission of FAT Procedure		14	14	0%	17-Aug-20	30-Aug-20	44															
NE/2017/06-1.DS.FAT.13 Speed Enforcement System		55	55	0%	20-Jul-20	12-Sep-20	194															
DWP3060 Approval of FAT Procedure		28	28	0%	16-Aug-20	12-Sep-20	194															
DWP3040 Comment on FAT Procedure / Meeting With Engineer		13	13	0%	20-Jul-20	01-Aug-20	194															
DWP3050 Resubmission of FAT Procedure		14	14	0%	02-Aug-20	15-Aug-20	194															
NE/2017/06-1.DS.FAT.14 Optical Fibre system		28	28	0%	03-Aug-20	30-Aug-20	135															
DWP3100 Approval of FAT Procedure		28	28	0%	03-Aug-20	30-Aug-20	135															
NE/2017/06-1.DS.SCT Preparation / Submission of SCT Procedures		56	56	0%	31-Aug-20	25-Oct-20	626															
NE/2017/06-1.DS.SCT.1 Central System		56	56	0%	31-Aug-20	25-Oct-20	626															
DWP8270 Comment on SCT Procedure / Meeting With Engineer		28	28	0%	28-Sep-20	25-Oct-20	626															
DWP8260 Preparation & Submission of Central System SCT Procedure		28	28	0%	31-Aug-20	27-Sep-20	626															
NE/2017/06-1.DS.SCT.2 Traffic Control Devices		56	56	0%	31-Aug-20	25-Oct-20	163															
DWP8310 Comment on SCT Procedure / Meeting With Engineer		28	28	0%	28-Sep-20	25-Oct-20	163															
DWP8300 Preparation & Submission of Traffic Control System SCT Procedure		28	28	0%	31-Aug-20	27-Sep-20	163															
NE/2017/06-1.DS.SCT.3 Communication System		56	56	0%	31-Aug-20	25-Oct-20	149															
DWP8350 Comment on SCT Procedure / Meeting With Engineer		28	28	0%	28-Sep-20	25-Oct-20	149															
DWP8340 Preparation & Submission of Communication System SCT Procedure		28	28	0%	31-Aug-20	27-Sep-20	149															
NE/2017/06-1.DS.SCT.4 CCTV System		56	56	0%	31-Aug-20	25-Oct-20	149															
DWP8390 Comment on SCT Procedure / Meeting With Engineer		28	28	0%	28-Sep-20	25-Oct-20	149															
DWP8380 Preparation & Submission of CCTV System SCT Procedure		28	28	0%	31-Aug-20	27-Sep-20	149															
NE/2017/06-1.DS.SCT.5 Building PABX System		56	56	0%	31-Aug-20	25-Oct-20	163															

Activity ID	Activity Name	Planned Duration	Remaining Duration	Schedule % Complete	Start	Finish	Total Float	Qtr 3, 2020			Qtr 4, 2020			Qtr 1, 2021			
								Jun	Jul	Aug	Sep	Oct	Nov	Dec	Jan	Feb	Mar
NE/2017/06-1.CSC1	Construction Stage for CBL TCSS	0	0	0%			0										
NE/2017/06-1.SATC	SAT for CBL TCSS	0	0	0%			0										
NE/2017/06-1.OPTC	Operability Period Test For the CBL TCSS	0	0	0%			0										
NE/2017/06-1.DLPC	DLP for the CBL TCSS	0	0	0%			0										
NE/2017/06-1.DOC	Documentation Submission for CBL TCSS	0	0	0%			0										
NE/2017/06-1.TRC	Training for CBL TCSS	0	0	0%			0										

Activity ID	Activity Name	Original Duration	Start	Finish	2020			
					Jul	Aug	Sep	Oct
Tseung Kwan O Interchange and Associated Works 202006_20200706 (004b)								
Contract Key Date & Milestone								
Contract Access Date								
CD-10070	Portion IV (01 Aug 20)	0	01-Aug-20	01-Aug-20				
Contract Key Date								
CD-10080	KD1 - Bridge ML for TCSS (23 Sep 20) -> (27 Oct 20)	0	27-Oct-20	27-Oct-20				
Anticipated EoT with Effect of CENCE								
CD-10910	Anticipated EOT for KD1 - Bridge ML for TCSS	277	28-Oct-20	31-Jul-21				
Contractor's Target Key Date								
Sloping Seawall Structure								
CD-10170	Acceptance of Reinstatement of all Seawall coping wall and associated work by Others' contract	0	08-Jul-20	08-Jul-20				
Major Safety/ Environment Element								
Independent Safety Audit								
CD-10440	Completion of 5th Independent Safety Audit (22 Jul 20)	0	08-Jul-20	08-Jul-20				
CD-10450	Completion of 6th Independent Safety Audit (22 Jan 21)	0	08-Jul-20	08-Jul-20				
Safety Bulletin Board								
CD-10462	Completion of 3rd Safety Bulletin Board (22 Jan 21)	0	08-Jul-20	08-Jul-20				
Miscellaneous Work								
Video Film								
CD-10490	Completion of Construction Video Film for Release III (10 Jan 21)	0	08-Jul-20	08-Jul-20				
Major Construction Work								
Bridge ML								
CD-10530	Completion of Pier Bridge ML	0	17-Jul-20	17-Jul-20				
Bridge S300								
CD-10600	Completion of Bored Pile (Construction) Bridge S300	0	16-Sep-20	16-Sep-20				
Bridge S200								
CD-10690	Completion of Bored Pile (Construction) Bridge S200	0	21-Aug-20	21-Aug-20				
Bridge S100								
CD-10780	Completion of Bored Pile (Construction) Bridge S100	0	21-Aug-20	21-Aug-20				
Preliminary & Pre-Construction Work								
Initial Document Submission								
BIM & Simulation of Construction Method								
Construction Method Simulation (CMS)								
PRE-10810	Prepare and Submit the Construction Method Simulation - Span Segment Erection	120	10-Jul-19 A	21-Jul-20				
Pre-Construction Work								
Survey								
Survey (Construction Work)								
PRE-11963	Initial Survey & Conditional Survey of Existing Structure (Portion IV)	3	01-Aug-20	03-Aug-20				
Conditional Survey (Documentation)								
PRE-11935	Prepare and Submit Report for Condition Survey (Portion IV)	3	04-Aug-20	06-Aug-20				
PRE-11936	Project Manager to acknowledge the Report Submission of Condition Survey (Portion IV)	3	07-Aug-20	09-Aug-20				
Initial Survey (Documentation)								
PRE-11955	Prepare and Submit Report for Initial Survey (Portion IV)	3	04-Aug-20	06-Aug-20				
PRE-11956	Project Manager to acknowledge the Report Submission of Initial Survey (Portion IV)	3	07-Aug-20	09-Aug-20				
Document Submission (Design, Drawing, Method Statement, Application etc)								
Major Method Statement								
Construction of Parapet & Installation of Utility Through								
PRE-14250	Contractor's Review with Project Manager, Revised Method Statement	21	07-Mar-20 A	28-Jul-20				
PRE-14270	ICE Certification & Submit Revised Method Statement for Parapet Construction & Installation of Utility Through	7	29-Jul-20	04-Aug-20				
PRE-14280	Project Manager to review and approve Method Statement Parapet Construction & Installation of Utility Through	21	05-Aug-20	25-Aug-20				
Installation of Bridge Furniture								
PRE-14290	Prepare 1st Submission of Method Statement Installation of Bridge Furniture	28	29-Jul-20	25-Aug-20				
PRE-14310	Contractor's Review with Project Manager, Revised Method Statement for Installation of Bridge Furniture	21	26-Aug-20	15-Sep-20				
PRE-14330	ICE Certification & Submit Revised Method Statement for Installation of Bridge Furniture	7	16-Sep-20	22-Sep-20				
PRE-14340	Project Manager to review and approve Method Statement Installation of Bridge Furniture	21	23-Sep-20	13-Oct-20				
Design Calculation/ Drawing of Temporary Work								
Design for Temp.work of Parapet Construction								
PRE-14610	Contractor's Review with Project Manager, Revised Design for Temp.work of Parapet Construction	14	08-Jul-20	21-Jul-20				
PRE-14630	ICE Certification & Submit the Revised Design for Temp.work of Parapet Construction	5	22-Jul-20	26-Jul-20				
PRE-14640	Project Manager to review and approve the Design for Temp.work of Parapet Construction	21	27-Jul-20	16-Aug-20				
Fabrication Drawing for the Mould of Precast Element								
Mould for Precast Parapet Skin								
PRE-15010	Prepare Design & Fabrication Drawing for Mould of Precast Parapet Skin	51	08-Apr-20 A	28-Jul-20				
PRE-15020	ICE Certification and Submit the Design & Fabrication Drawing for Mould of Precast Parapet Skin	5	29-Jul-20	02-Aug-20				
PRE-15030	Contractor's Review with Project Manager, Revised & Resubmit the Fabrication Drawing for Mould of Precast Parapet Skin	14	03-Aug-20	16-Aug-20				
PRE-15050	ICE Certification and Submit the Revised Design & Fabrication Drawing for Mould of Precast Parapet Skin	5	17-Aug-20	21-Aug-20				
PRE-15060	Project Manager to Review and Approve Design & Fabrication Drawing for Mould of Precast Parapet Skin	21	22-Aug-20	11-Sep-20				
Pre-Fabrication Element								
Pre-Fabrication of Precast Mould								
FD-10120	Pre-fabrication of Precast Mould for Precast Parapet Skin	45	12-Sep-20	26-Oct-20				
Pre-Fabrication of Precast Segment								
FD-10195	Pre-Fabrication for Segment (Batch 5) - 279 to 338 nos. Pier Head/ Span/ Key Segment	31	01-Jul-20 A	31-Jul-20				
FD-10196	Pre-Fabrication for Segment (Batch 6) - 338 to 392 nos. Pier Head/ Span/ Key Segment	31	01-Aug-20	31-Aug-20				
FD-10197	Pre-Fabrication for Segment (Batch 7) - 393 to 448 nos. Pier Head/ Span/ Key Segment	30	01-Sep-20	30-Sep-20				
FD-10510	Mould No. 1 Modification for Pier Head Segment 2J-2 (2J-U0, CBL Interfacing) Pre-Fabrication, Including Certification	30	01-Sep-20	30-Sep-20				
FD-10198	Pre-Fabrication for Segment (Batch 8) - 449 to 492 nos. Pier Head/ Span/ Key Segment	31	01-Oct-20	31-Oct-20				
Pre-Fabrication of Parapet Skin								
		67	27-Oct-20	01-Jan-21				

Works Critical Works Actual



Works Critical Works Actual

Activity ID	Activity Name	Original Duration	Start	Finish	2020			
					Jul	Aug	Sep	Oct
CON-13940	Rebar, Formwork/Falsework & Concreting for Pier Head Segment Diaphragm 4K (1 no. Pier Head Segment/ Team 4c/ Team 3r)	15	12-Oct-20	29-Oct-20				
CON-13910	Rebar, Formwork/Falsework & Concreting for Pier Head Segment Diaphragm 4G (1 no. Pier Head Segment/ Team 3c/ Team 4r)	15	14-Oct-20	31-Oct-20				
Bridge S200		75	18-Aug-20	16-Nov-20				
CON-13990	Rebar, Formwork/Falsework & Concreting for Pier Head Segment Diaphragm 2D (1 no. Pier Head Segment/ Team 3c/ Team 4r)	15	18-Aug-20	03-Sep-20				
CON-14010	Rebar, Formwork/Falsework & Concreting for Pier Head Segment Diaphragm 2F (2 no. Pier Head Segment/ Team 4c/ Team 4r)	30	04-Sep-20	10-Oct-20				
CON-14000	Rebar, Formwork/Falsework & Concreting for Pier Head Segment Diaphragm 2E (1 no. Pier Head Segment/ Team 3c/ Team 3r)	15	16-Sep-20	05-Oct-20				
CON-14030	Rebar, Formwork/Falsework & Concreting for Pier Head Segment Diaphragm 2H (1 no. Pier Head Segment/ Team 4c/ Team 3r)	15	30-Oct-20	16-Nov-20				
Bridge S100		5	13-Jul-20	17-Jul-20				
CON-14050	Alignment and Miscellaneous Work Pier Head Segment Diaphragm 3A(Precast Diaphragm) (1 no. Pier Head Segment/ Team 1)	5	13-Jul-20	17-Jul-20				
Concrete Curing and Formwork Removal		90	26-May-20 A	22-Oct-20				
Bridge ML		33	26-May-20 A	14-Aug-20				
CON-14180	Concrete Curing & Formwork Removal for Pier Head Segment Diaphragm 1JN (1 no.)	10	26-May-20 A	08-Jul-20 A				
CON-14140	Concrete Curing & Formwork Removal for Pier Head Segment Diaphragm 1FS (2 nos.) (Team U)	10	04-Aug-20	14-Aug-20				
Bridge S300		25	27-Jul-20	24-Aug-20				
CON-14280	Concrete Curing & Formwork Removal for Pier Head Segment Diaphragm 4B (1 no.) (Team U)	10	27-Jul-20	06-Aug-20				
CON-14270	Concrete Curing & Formwork Removal for Pier Head Segment Diaphragm 4C (1 no.) (Team U)	10	12-Aug-20	24-Aug-20				
Bridge S200		40	04-Sep-20	22-Oct-20				
CON-14400	Concrete Curing & Formwork Removal for Pier Head Segment Diaphragm 2D (1 no.) (Team U)	10	04-Sep-20	15-Sep-20				
CON-14360	Concrete Curing & Formwork Removal for Pier Head Segment Diaphragm 2E (1 no.) (Team U)	10	06-Oct-20	16-Oct-20				
CON-14390	Concrete Curing & Formwork Removal for Pier Head Segment Diaphragm 2F (2 nos.) (Team U)	10	12-Oct-20	22-Oct-20				
Span Segment Erection		113	26-May-20 A	19-Nov-20				
Span Segment Erection (Including Plant Mobilisation, Erection & removal of Temp. Work)		113	26-May-20 A	19-Nov-20				
Bridge ML		112	26-May-20 A	18-Nov-20				
Span Segment ML-2N		102	24-Jun-20 A	06-Nov-20				
CON-14510	[LF-03] Erection of Span Segment@Bridge ML- 2N - Span 1F-N (12 nos./ 6 Pairs)	24	24-Jun-20 A	04-Aug-20				
CON-14530	[LF-02b] Erection of Span Segment@Bridge ML- 2N - Span 1E-N (4 nos./ 2 Pairs)	16	30-Jun-20 A	08-Jul-20 A				
CON-16080	[LF-04] Erection of Span Segment@Bridge ML- 2N - Span 1E-N (6 nos./ 3 Pairs)	12	05-Aug-20	18-Aug-20				
CON-14520	[HB2-03b] Erection of Span Segment@Bridge ML- 2N - Span 1G-N (7 nos.)	28	15-Aug-20	16-Sep-20				
CON-14540	[TB2-02] Erection of Span Segment@Bridge ML- 2N - Span 1D-N (5 nos.- TB2)	30	30-Sep-20	06-Nov-20				
Span Segment ML-2S(N)		62	07-Aug-20	20-Oct-20				
CON-14560	[HB1-03b] Erection of Span Segment@Bridge ML- 2S(N) - Span 1G-S (7 nos.)	28	07-Aug-20	08-Sep-20				
CON-14550	[LF-05] Erection of Span Segment@Bridge ML- 2S(N) - Span 1F-S(N) (12 nos./ 6 Pairs)	24	19-Aug-20	15-Sep-20				
CON-14570	[LF-06] Erection of Span Segment@Bridge ML- 2S(N) - Span 1E-S(N) (14 nos./ 7 Pairs)	28	16-Sep-20	20-Oct-20				
Span Segment ML-2S(S)		51	17-Sep-20	18-Nov-20				
CON-14611	[HB2-04b] Erection of Span Segment@Bridge ML- 2S(S)- Span 4A (6 nos.)	24	17-Sep-20	16-Oct-20				
CON-14590	[LF-07] Erection of Span Segment@Bridge ML- 2S(S) - Span 1F-S(S) (12 nos./ 6 Pairs)	24	21-Oct-20	18-Nov-20				
Span Segment ML-3N		104	26-May-20 A	09-Nov-20				
CON-14650	[HB1-01c] Erection of Span Segment@Bridge ML- 3N - Span 1H-N (22 nos./ 11Pairs)	24	26-May-20 A	21-Jul-20				
CON-14630	[HB2-01c] Erection of Span Segment@Bridge ML- 3N- Span 1J-N (14 nos.. D-7 nos, U - 7 nos.)	28	08-Jul-20	08-Aug-20				
CON-14620	[HB2-03a] Erection of Span Segment@Bridge ML- 3N- Span 1G-N (7 nos.)	28	15-Aug-20	16-Sep-20				
CON-15970	[TB1-01a] Erection of Span Segment@Bridge ML- 3N- Span 1J-N (2 nos..U - 2 nos. (1J-N-U8 & 1J-N-U9) - TB1)	5	28-Sep-20	05-Oct-20				
CON-14640	[TB1-01b] Erection of Span Segment@Bridge ML- 3N - Span 1K-N (9 nos.- TB1)	29	06-Oct-20	09-Nov-20				
Span Segment ML-3S		70	23-Jun-20 A	03-Oct-20				
CON-14680	[HB2-01b] Erection of Span Segment@Bridge ML-3S - Span 1J-S (6 nos./D-3 nos, U - 3 nos.)	18	23-Jun-20 A	02-Jul-20 A				
CON-14660	[HB1-02] Erection of Span Segment@Bridge ML-3S - Span 1H-S (6 nos./ 3Pairs)	12	22-Jul-20	04-Aug-20				
CON-14670	[HB1-03a] Erection of Span Segment@Bridge ML-3S - Span 1G-S (7 nos.)	28	07-Aug-20	08-Sep-20				
CON-16070	[HB1-04b] Erection of Span Segment@Bridge ML-3S - Span 1J-S (10 nos./ D-4 nos, U - 6 nos.)	20	09-Sep-20	03-Oct-20				
Bridge S300		85	10-Aug-20	19-Nov-20				
Span Segment S300-1		85	10-Aug-20	19-Nov-20				
CON-16060	[HB2-02] Erection of Span Segment@Bridge S300-1 - Span 4D (2 nos./ 1 Pair)	4	10-Aug-20	13-Aug-20				
CON-14710	[HB2-04a] Erection of Span Segment@Bridge S300-1 - Span 4A (6 nos.)	24	17-Sep-20	16-Oct-20				
CON-14730	[HB1-05] Erection of Span Segment@Bridge S300-1 - Span 4C (14 nos./ 7 Pairs)	28	05-Oct-20	06-Nov-20				
CON-14740	[HB2-05] Erection of Span Segment@Bridge S300-1 - Span 4B (14 nos./ 7 Pairs)	28	17-Oct-20	19-Nov-20				
Bridge S100		56	20-Jul-20	22-Sep-20				
Span Segment S100		56	20-Jul-20	22-Sep-20				
CON-15960	[TB2-01a] Erection of Span Segment@Bridge S100 - Span 3B (2 nos./ D-2 nos (3B-D6 & 3B-D7- TB2) (To be Installed with 3A)	5	20-Jul-20	24-Jul-20				
CON-14920	[TB2-01b] Erection of Span Segment@Bridge S100 - Span 3A (4 nos.- TB2)	51	25-Jul-20	22-Sep-20				
Key Segment Erection (Including Plant Setting of Segment Erector, Segment Erection and Stitch Joint)		94	08-Jul-20	28-Oct-20				
Bridge ML		66	10-Aug-20	28-Oct-20				
Bridge ML-2N, ML-3N		14	10-Aug-20	25-Aug-20				
CON-15020	[ML03] Stitching & Mid -Span Stressing @ML 1HN - 1JN (Stitching)	6	10-Aug-20	15-Aug-20				
CON-14990	[ML01] Stitching & Mid -Span Stressing @ML 1EN- 1FN (Stitching)	6	19-Aug-20	25-Aug-20				
Bridge ML-2S(N), ML-3S		20	05-Oct-20	28-Oct-20				
CON-15060	[ML09] Stitching & Mid -Span Stressing @ML 1HS - 1JS (Stitching)	6	05-Oct-20	10-Oct-20				
CON-15070	[ML07] Erect Key Segment,Stitching & Mid -Span Stressing @ML 1ES(N)-1FS(N) (1 no.- Key Segment) [KB2-03]	6	21-Oct-20	28-Oct-20				
Bridge S300		6	14-Aug-20	20-Aug-20				
CON-15130	[S300-01] Erect Key Segment,Stitching & Mid -Span Stressing @S300 4D - 4E (1 no.- Key Segment) [KB2-02]	6	14-Aug-20	20-Aug-20				
Bridge S100		72	08-Jul-20	29-Sep-20				
CON-15310	[S100-01] Erect Key Segment,Stitching & Mid -Span Stressing @S100 3B - 3C (1 no.-Key Segment) [KB2-01]	7	08-Jul-20	15-Jul-20				
CON-15320	[S100-02] Stitching & Mid -Span Stressing @S100 3A - 3B (Stitching)	6	23-Sep-20	29-Sep-20				

Works Critical Works Actual