

High Level 3 Months Look Ahead Programme

Activities	Dec-20	Jan-21	Feb-21
Lam Tin Interchange			
EHC2 U-Trough			
Site Formation - Area 1G1 & 1G2 &5			
Site Formation - Area 2			
Site Formation - Slope Stabilisation			
Site Formation - Retaining Wall			
Administration Building			
West Ventilation Building			
Bridge Construction			
Stormwater Tank Construction			
S01_2, EHC1 & 4 Construction			
CKLR Underground Utilities			
Landscape Deck			
Tunnel			
Main Tunnel Lining Works			
S02_2 Excavation & Lining			
TKO Interchange			
Bridge Construction			
East Ventilation Building			

Activity ID	Activity Name	Calendar	Original Duration	Remaining Dur	Start	Finish	Total Float	Activity % Complete	Variance - % Duration	2020			2021		
										Nov	Dec	Jan	Feb	Mar	
NE/2015/02 Tseung Kwan O - Lam Tin Tunnel-Road P2 and Associated Works (Nov-20)															
Project Commencement and Completion															
K10020	Project Completion Date	P2-Cal.A	0.0	0.0	04-Feb-21	04-Feb-21	0.0	0%	0.0						Project Completion Date
Target Key Date and Section Completion of the Works (Revised Contract Key Date)															
A10420	Key Date 1_Portion IX Foundation and Reclamation	P2-Cal.A	0.0	0.0	24-Nov-20	24-Nov-20	-448.5	0%	0.0						
Target Key Date and Section Completion of the Works (Possible Contract Key Date)															
A10770	Key Date 1_Portion IX Foundation and Reclamation	P2-Cal.A	0.0	0.0	24-Nov-20	24-Nov-20	-439.0	0%	0.0						
Revised Contract Key Date and Section Completion of Works under CE57,124,135,13															
K10412	Section 2_All Works within Portion II	P2-Cal.A	0.0	0.0	20-Nov-20	20-Nov-20	-54.0	0%	0.0						
K10406	Key Date 3_Portion IV, V, VI, VIII and IX Road P2, Slip Roads and E&M Works	P2-Cal.A	0.0	0.0	06-Feb-21	06-Feb-21	0.0	0%	0.0						Key Date 3_Portion IV, V, VI, VIII and IX Road P2
Possible Contract Key Date & Section Completion of the Works under CE154, 159, 17															
K10419-16	Section 2_All Works within Portion II	P2-Cal.A	0.0	0.0	20-Nov-20	20-Nov-20	-54.0	0%	0.0						
K10419-13	Key Date 3_Portion IV, V, VI, VIII and IX Road P2, Slip Roads and E&M Works	P2-Cal.A	0.0	0.0	10-Feb-21	10-Feb-21	0.0	0%	0.0						Key Date 3_Portion IV, V, VI, VIII and IX Road P2
Area Handover Date															
A10740	Area Z (Additional Works Area)	P2-Cal.A	0.0	0.0	20-Nov-20	31-Dec-20	-54.0	0%	0.0						
A10640	Area B	P2-Cal.A	0.0	0.0	31-Dec-20	31-Dec-20	0.0	0%	0.0						Area B
A10730	Zone 2 of Area Y (Additional Works Area)	P2-Cal.A	0.0	0.0	31-Dec-20	31-Dec-20	0.0	0%	0.0						Zone 2 of Area Y (Additional Works Area)
Preliminaries, Submission, Contractor's Design Submission and Approval															
Contractor's Design Submission and Acceptance															
E&M Design															
Detail Design for E&M Works (Tunnel and associated)															
FS Detail Design															
Underpass															
S11651-41	Re-submission of Detail Design	P2-Cal.A	21.0	1.0	31-Aug-20	21-Nov-20	-102.5	95.24%	-62.0						Re-submission of Detail Design
S11651-51	Acceptance of Details Design by Supervisor	P2-Cal.A	21.0	21.0	22-Nov-20	12-Dec-20	-102.5	0%	0.0						Acceptance of Details Design by Supervisor
Plantroom															
S11652-63	Re-submission of Detail Design	P2-Cal.A	21.0	1.0	31-Aug-20	21-Nov-20	-102.5	95.24%	-62.0						Re-submission of Detail Design
S11652-73	Acceptance of Detail Design by Supervisor	P2-Cal.A	21.0	21.0	22-Nov-20	12-Dec-20	-102.5	0%	0.0						Acceptance of Detail Design by Supervisor
Plumbing and Drainage Detail Design															
Underpass															
S11658	Formal Submission to Supervisor	P2-Cal.A	21.0	1.0	22-Aug-20	21-Nov-20	-45.5	95.24%	-71.0						Formal Submission to Supervisor
S11659	Accept detail design by the Supervisor	P2-Cal.A	21.0	21.0	22-Nov-20	12-Dec-20	-45.5	0%	0.0						Accept detail design by the Supervisor
Plantroom															
S11660-77	Re-submission of Design Report	P2-Cal.A	21.0	1.0	24-Aug-20	21-Nov-20	-45.5	95.24%	-69.0						Re-submission of Design Report
S11660-87	Acceptance of Design Report	P2-Cal.A	21.0	21.0	22-Nov-20	12-Dec-20	-45.5	0%	0.0						Acceptance of Design Report
Electrical Detail Design															
Underpass Lighting															
S11660-70	Re-Submission of Detail Design	P2-Cal.A	21.0	1.0	13-Jul-20	21-Nov-20	-205.5	95.24%	-111.0						Re-Submission of Detail Design

- Primary Baseline
- Actual Work
- Remaining Work
- Critical ...
- ◆ Baselin...
- ◆ Milesto...

NE/2015/02 Tseung Kwan O - Lam Tin Tunnel-Road P2 and Associated Works (Nov-20)

3 Monthly Rolling Programme Update
(Data Date : 20 Nov 2020)
Page : 1 of 11

Date	Revision	Checked	Approved
20-Nov-20			

Activity ID	Activity Name	Calendar	Original Duration	Remaining Dur	Start	Finish	Total Float	Activity % Complete	Variance - Act Duration	2020	2021					
										Nov	Dec	Jan	Feb	Mar		
S11660-80	Acceptance of Detail Design	P2-Cal-A	21.0	21.0	22-Nov-20	12-Dec-20	-205.5	0%	0.0		Acceptance of Detail Design					
External Road Lighting																
S11660-69	Re-submission of Detail Design	P2-Cal-A	21.0	1.0	13-Jul-20 A	21-Nov-20	-205.5	95.24%	-111.0		Re-submission of Detail Design					
S11660-79	Acceptance of Detail Design by Supervisor	P2-Cal-A	21.0	21.0	22-Nov-20	12-Dec-20	-205.5	0%	0.0		Acceptance of Detail Design by Supervisor					
Plantroom																
S11667	Formal Submission to Supervisor	P2-Cal-A	21.0	1.0	24-Aug-20 A	21-Nov-20	-205.5	95.24%	-69.0		Formal Submission to Supervisor					
S11668	Accept detail design by the Supervisor	P2-Cal-A	21.0	21.0	22-Nov-20	12-Dec-20	-205.5	0%	0.0		Accept detail design by the Supervisor					
ELV And SCADA Detail Design																
Underpass																
S11669-59	Accept detail design by the Supervisor	P2-Cal-A	21.0	4.0	06-Nov-20 A	24-Nov-20	-63.5	80.95%	2.0		Accept detail design by the Supervisor					
Plantroom																
S11670-49	Accept Detail Design by the Supervisor	P2-Cal-A	21.0	4.0	07-Nov-20 A	24-Nov-20	-63.5	80.95%	3.0		Accept Detail Design by the Supervisor					
LED Design																
S11673	Issue of PMI on LED Lighting	P2-Cal-A	0.0	0.0		20-Nov-20	-240.5	0%	0.0		Issue of PMI on LED Lighting					
S11683	Prepare and Submit LED Lighting Design Report	P2-Cal-A	35.0	14.0	18-Nov-20 A	04-Dec-20	-240.5	60%	18.0		Prepare and Submit LED Lighting Design Report					
S11693	Review and Comment by Supervisor	P2-Cal-A	14.0	14.0	05-Dec-20	18-Dec-20	-240.5	0%	0.0		Review and Comment by Supervisor					
S11703	Prepare and Submit Revised LED Lighting Design Report	P2-Cal-A	14.0	14.0	19-Dec-20	01-Jan-21	-240.5	0%	0.0		Prepare and Submit Revised LED Lighting Design Report					
S11713	Review and Acceptance of LED Lighting Design Report by PM	P2-Cal-A	21.0	21.0	02-Jan-21	22-Jan-21	-240.5	0%	0.0		Review and Acceptance of LED Lighting Design Report by PM					
S11723	Review and Acceptance of LED Lighting Design Report by EMSD	P2-Cal-A	21.0	21.0	23-Jan-21	12-Feb-21	-240.5	0%	0.0		Review and Acceptance of LED Lighting Design Report by EMSD					
Design of Architectural Finishes for Internal Walls of U-Trough Structures																
S11730	Resubmit Design of Architectural Finishes for Internal Walls of U-Trough Structures (VE and PC Panel) (Rev.B)	P2-Cal-A	14.0	1.0	07-Aug-20 A	21-Nov-20	-207.5	92.86%	-93.0		Resubmit Design of Architectural Finishes for Internal Walls of U-Trough Structures (VE and PC Panel) (Rev.B)					
S11750	Review and Accept Design of Architectural Finishes for Internal Walls of U-Trough Structures (VE and PC Panel) (Rev.B)	P2-Cal-A	21.0	21.0	22-Nov-20	12-Dec-20	-207.5	0%	0.0		Review and Accept Design of Architectural Finishes for Internal Walls of U-Trough Structures (VE and PC Panel) (Rev.B)					
Irrigation System																
S11788	Prepare & Submission of Form 542	P2-Cal-A	14.0	14.0	18-Dec-20	31-Dec-20	-149.5	0%	0.0		Prepare & Submission of Form 542					
S11789	Reviewed by WSD	P2-Cal-A	28.0	28.0	01-Jan-21	28-Jan-21	-149.5	0%	0.0		Reviewed by WSD					
S11790	Formal Submission to Supervisor	P2-Cal-A	14.0	14.0	29-Jan-21	11-Feb-21	-149.5	0%	0.0		Formal Submission to Supervisor					
S11800	Review and Accept Submission for Waterpoints and associated elements	P2-Cal-A	21.0	21.0	12-Feb-21	04-Mar-21	-149.5	0%	0.0		Review and Accept Submission for Waterpoints and associated elements					
Major Construction Works Method Statement																
ELS of U-Troughs (P2 CH363-411)																
S14120-10	Accept Method Statement for Excavation and ELS of U-Troughs (P2 CH363-411)	P2-Cal-A	21.0	3.0	03-Nov-20 A	23-Nov-20	-236.5	85.71%	0.0		Accept Method Statement for Excavation and ELS of U-Troughs (P2 CH363-411)					
ELS of U-Troughs (SR2 100-170)																
S14120-30	Accept Method Statement for Excavation and ELS of U-Troughs (SR2 100-170)	P2-Cal-A	21.0	3.0	03-Nov-20 A	23-Nov-20	-230.5	85.71%	0.0		Accept Method Statement for Excavation and ELS of U-Troughs (SR2 100-170)					
Construction of U-Troughs structure (P2 CH363-411)																
S14130	Prepare and Submit Method Statement for Construction of U-Troughs Structure (P2 CH363-411)	P2-Cal-A	18.0	18.0	21-Nov-20	08-Dec-20	-190.5	0%	0.0		Prepare and Submit Method Statement for Construction of U-Troughs Structure (P2 CH363-411)					
S14132	Review and Discuss Method Statement for Construction of U-Troughs Structure (P2 CH363-411)	P2-Cal-A	21.0	21.0	09-Dec-20	29-Dec-20	-190.5	0%	0.0		Review and Discuss Method Statement for Construction of U-Troughs Structure (P2 CH363-411)					
S14134	Resubmit Method Statement for Construction of U-Troughs Structure (P2 CH363-411)	P2-Cal-A	14.0	14.0	30-Dec-20	12-Jan-21	-190.5	0%	0.0		Resubmit Method Statement for Construction of U-Troughs Structure (P2 CH363-411)					
S14136	Accept Method Statement for Construction of U-Troughs Structure (P2 CH363-411)	P2-Cal-A	21.0	21.0	13-Jan-21	02-Feb-21	-190.5	0%	0.0		Accept Method Statement for Construction of U-Troughs Structure (P2 CH363-411)					
Construction of U-Trough C Structures CT01 CH201 - CH366 & CT01 CH117 - CH201																

	Primary Baseline		Critical ...
	Actual Work		Baselin...
	Remaining Work		Milesto...

NE/2015/02 Tseung Kwan O - Lam Tin Tunnel-Road P2 and Associated Works (Nov-20)

3 Monthly Rolling Programme Update (Data Date : 20 Nov 2020)
Page : 2 of 11

Date	Revision	Checked	Approved
20-Nov-20			

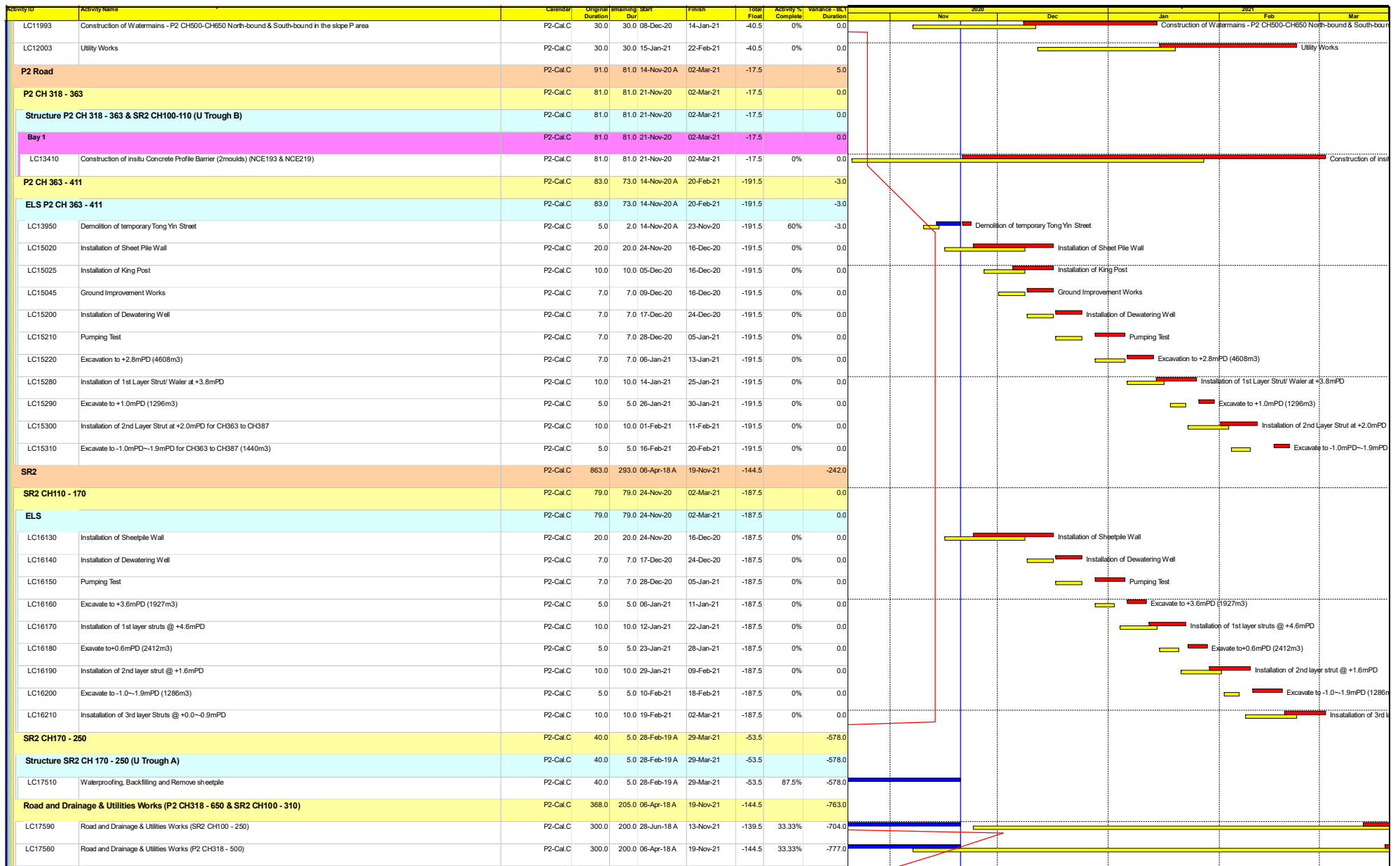
Activity ID	Activity Name	Calendar	Original Duration	Remaining Dur	Start	Finish	Total Float	Activity % Complete	Variance - Act Duration	2020	2021
S14217	Prepare and Submit Method Statement for Construction of U-Troughs Structure	P2-Cal.A	18.0	1.0	12-Nov-20	21-Nov-20	-221.5	94.44%	8.0	Nov	Dec
S14218	Review and Discuss Method Statement for Construction of U-Troughs Structure	P2-Cal.A	7.0	7.0	22-Nov-20	28-Nov-20	-221.5	0%	7.0	Nov	Dec
S14219	Resubmit Method Statement for Construction of U-Troughs Structure	P2-Cal.A	7.0	7.0	29-Nov-20	05-Dec-20	-221.5	0%	7.0	Nov	Dec
S14219-1	Accept Method Statement for Construction of U-Troughs Structure	P2-Cal.A	21.0	21.0	06-Dec-20	26-Dec-20	-221.5	0%	0.0	Nov	Dec
Procurement of Major Material			P2-Cal.A	1708.0	307.0	20-Jan-17 A	23-Sep-21	-207.5			
Civil/Structural			P2-Cal.A	1521.0	120.0	20-Jan-17 A	20-Mar-21	-151.5			
S14997	Offsite Fabrication of Steel Works for the Sign Gantry	P2-Cal.A	60.0	60.0	21-Nov-20	19-Jan-21	-125.5	0%	0.0	Nov	Dec
S14999	Offsite Fabrication of Traffic and directional signs	P2-Cal.A	60.0	60.0	21-Nov-20	19-Jan-21	-91.5	0%	0.0	Nov	Dec
S14983	Procurement and Delivery of ELS Walling & Struts Members	P2-Cal.A	1015.0	70.0	20-Jan-17 A	29-Jan-21	-245.5	93.1%	-456.0	Nov	Dec
S14987	Cast-in for sign gantry and Road Works	P2-Cal.A	120.0	120.0	21-Nov-20	20-Mar-21	-185.5	0%	0.0	Nov	Dec
Architectural			P2-Cal.A	285.0	285.0	13-Dec-20	23-Sep-21	-207.5			
S15142	Trial Panels for V-Panel / Precast Concrete Panel	P2-Cal.A	45.0	45.0	13-Dec-20	26-Jan-21	-207.5	0%	0.0	Nov	Dec
S15142-01	Manufacturing of VE Panel	P2-Cal.A	180.0	180.0	27-Jan-21	25-Jul-21	-167.5	0%	0.0	Nov	Dec
S15142-02	Manufacturing of Precast Concrete Panel	P2-Cal.A	240.0	240.0	27-Jan-21	23-Sep-21	-207.5	0%	0.0	Nov	Dec
E&M			P2-Cal.A	286.0	219.0	15-Sep-20 A	27-Jun-21	-210.5			
S15144	Procurement and Delivery of MVA Plant	P2-Cal.A	180.0	12.0	15-Sep-20 A	02-Dec-20	-33.5	93.33%	101.0	Nov	Dec
S15180	Procurement and Delivery of ELV Equipment (SCADA and ELV)	P2-Cal.A	48.0	48.0	25-Nov-20	11-Jan-21	-63.5	0%	0.0	Nov	Dec
S15148	Procurement and Delivery of PID Equipment	P2-Cal.A	280.0	32.0	15-Sep-20 A	13-Jan-21	-45.5	88.57%	159.0	Nov	Dec
S15146	Procurement and Delivery of FS Equipment	P2-Cal.A	59.0	59.0	13-Dec-20	09-Feb-21	-102.5	0%	0.0	Nov	Dec
S15150	Procurement and Delivery of EL Equipment	P2-Cal.A	152.0	152.0	13-Dec-20	13-May-21	-205.5	0%	0.0	Nov	Dec
S15190	Procurement and Delivery of LED Lighting	P2-Cal.A	135.0	135.0	13-Feb-21	27-Jun-21	-240.5	0%	0.0	Nov	Dec
Section 2 of the Works (All Works Within Portion II)			P2-Cal.C	319.0	83.0	07-Feb-20 A	04-Mar-21	-127.0			
Roadworks			P2-Cal.C	319.0	83.0	07-Feb-20 A	04-Mar-21	-127.0			
SR1 CH0.00 to P2 CH650			P2-Cal.C	186.0	59.0	10-Jun-20 A	01-Feb-21	-103.0			
LC12104	Construction of Road Kerb/Sign Post	P2-Cal.C	14.0	12.0	10-Jun-20 A	04-Dec-20	-103.0	14.29%	-134.0	Nov	Dec
LC12114	Construction of cycle Track and Footpath	P2-Cal.C	26.0	26.0	05-Dec-20	07-Jan-21	-103.0	0%	0.0	Nov	Dec
LC12124	Installation of Type II Railing/ Granite Stone Facing	P2-Cal.C	21.0	21.0	08-Jan-21	01-Feb-21	-103.0	0%	0.0	Nov	Dec
Adjacent to site office (SMH SR05 & SR06)			P2-Cal.C	319.0	83.0	07-Feb-20 A	04-Mar-21	-202.0			
LC12134	Review and Approval of ELS	P2-Cal.C	16.0	9.0	13-Feb-20 A	01-Dec-20	-202.0	43.75%	-224.0	Nov	Dec
LC12132	Acceptance of Quotation PMI177	P2-Cal.C	60.0	9.0	07-Feb-20 A	01-Dec-20	-202.0	85%	-185.0	Nov	Dec
LC12144	Construction of ELS for SMH-SR06	P2-Cal.C	12.0	12.0	02-Dec-20	15-Dec-20	-202.0	0%	0.0	Nov	Dec
LC12154	Construction of SMH-SR06 and Backfilling	P2-Cal.C	26.0	26.0	16-Dec-20	18-Jan-21	-202.0	0%	0.0	Nov	Dec
LC12164	Construction of ELS for SMH-SR05	P2-Cal.C	12.0	12.0	19-Jan-21	01-Feb-21	-202.0	0%	0.0	Nov	Dec
LC12174	Construction of SMH-SR05 and Backfilling	P2-Cal.C	24.0	24.0	02-Feb-21	04-Mar-21	-202.0	0%	0.0	Nov	Dec
Section 3 of the Works All Works within Portion IV, V, VI, VII, VIII, and IX			P2-Cal.C	941.0	313.0	06-Apr-18 A	10-Dec-21	-162.5			
Existing Land Section			P2-Cal.C	863.0	295.0	06-Apr-18 A	19-Nov-21	-144.5			
Retaining Wall P2-A CH 500- 650			P2-Cal.C	423.0	74.0	20-Sep-19 A	22-Feb-21	-40.5			
LC11933	Slope Works (Slope P)	P2-Cal.C	45.0	14.0	20-Sep-19 A	07-Dec-20	-40.5	68.89%	-317.0	Nov	Dec

- Primary Baseline
- Critical ...
- Actual Work
- Baselin...
- Remaining Work
- ◆ Milesto...

NE/2015/02 Tseung Kwan O - Lam Tin Tunnel-Road P2 and Associated Works (Nov-20)

3 Monthly Rolling Programme Update (Data Date : 20 Nov 2020)
Page : 3 of 11

Date	Revision	Checked	Approved
20-Nov-20			



- Primary Baseline
- Actual Work
- Remaining Work
- Critical ...
- Baselin...
- Milesto...

NE/2015/02 Tseung Kwan O - Lam Tin Tunnel-Road P2 and Associated Works (Nov-20)

3 Monthly Rolling Programme Update (Data Date : 20 Nov 2020) Page : 4 of 11

Date	Revision	Checked	Approved
20-Nov-20			

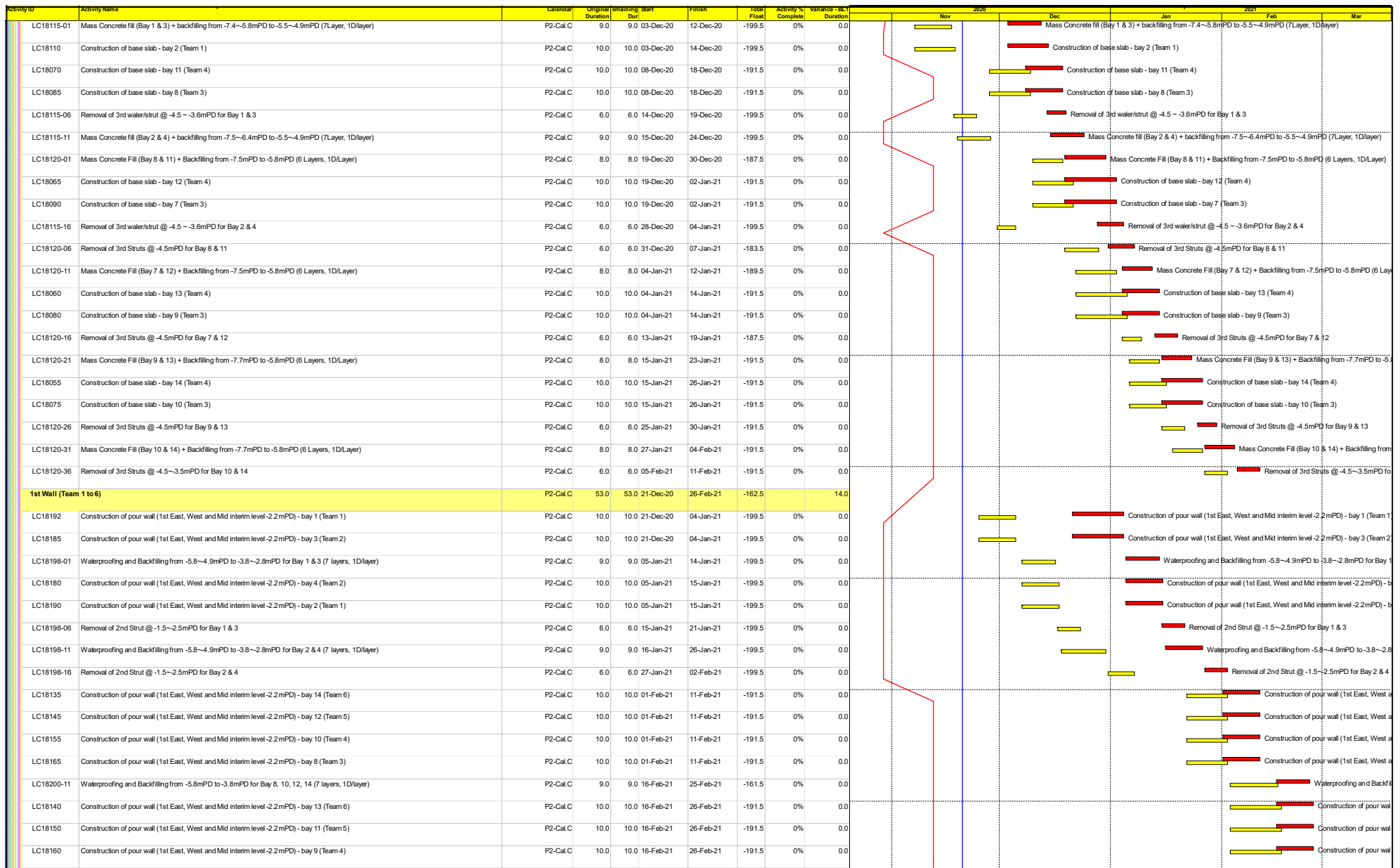
Activity ID	Activity Name	Calendar	Original Duration	Remaining Dur	Start	Finish	Total Float	Activity % Complete	Variance - Act Duration	2020	2021			
										Nov	Dec	Jan	Feb	Mar
New Reclaimed Section														
Marine Works														
Concrete Coping														
Eastern Seawall														
MC13495	Coping Area 5 (CH500S) (146m)	P2-Cal.C	32.0	4.0	09-Jun-20 A	25-Nov-20	146.5	87.5%	-109.0					
Western Seawall														
MC13595	Coping Area 6 (CH440-471W) (31m)	P2-Cal.C	6.0	13.0	27-Apr-20 A	07-Dec-20	49.5	0%	-116.0					
MC13575	Coping Area 5 (CH371-440W) (89m)	P2-Cal.C	12.0	5.0	02-May-20 A	02-Dec-20	49.5	58.33%	-167.0					
MC13555	Coping Area 4 (CH271-371W) (100m)	P2-Cal.C	15.0	4.0	27-Apr-20 A	07-Dec-20	49.5	73.33%	-171.0					
Armour Protection														
Laying of Armour Rock (West)														
MC13755	Armour CH440-500 (4735m3)	P2-Cal.C	15.0	1.0	11-May-20 A	21-Nov-20	-357.5	93.33%	-148.0					
MC13735	Armour CH375-440 (4882m3)	P2-Cal.C	15.0	1.0	15-May-20 A	21-Nov-20	-364.5	93.33%	-144.0					
MC13715	Armour CH311-375 (4767m3)	P2-Cal.C	7.0	1.0	22-May-20 A	23-Nov-20	-364.5	85.71%	-147.0					
MC13695	Armour CH271-311 (1833m3)	P2-Cal.C	8.0	1.0	03-Jan-20 A	24-Nov-20	-364.5	87.5%	-258.0					
Laying of Armour Rock (East)														
MC13955	Armour CH375-440 (4882m3)	P2-Cal.C	12.0	1.0	14-Mar-20 A	21-Nov-20	91.5	91.67%	-194.0					
MC13935	Armour CH300-375 (4767m3)	P2-Cal.C	12.0	1.0	06-Feb-20 A	21-Nov-20	84.5	91.67%	-226.0					
MC13915	Armour CH250-300 (3181m3)	P2-Cal.C	10.0	1.0	13-Jan-20 A	23-Nov-20	84.5	90%	-247.0					
MC13895	Armour CH190-250 (2310m3)	P2-Cal.C	9.0	1.0	13-Aug-20 A	24-Nov-20	84.5	88.89%	-77.0					
Modification Works of Existing Seawall														
MC14305	Grade 400 Rock fill	P2-Cal.C	4.0	2.0	15-Aug-20 A	23-Nov-20	148.5	50%	-79.0					
Land Works														
Road P2 Underpass (CH105-CH318)														
Instrumentation and Monitoring for Road P2 Structure Construction														
LC17760	Monitoring of Instrumentation	P2-Cal.C	460.0	313.0	16-Nov-19 A	10-Dec-21	-162.5	31.96%	-154.0					
Underpass														
Underpass P2 CH 105 - 318														
ELS														
P2 CH105-223														
LC30075	Pile Rectification Works	P2-Cal.C	20.0	8.0	02-Nov-20 A	30-Nov-20	-191.5	60%	-5.0					
LC30080	Excavation to Formation Level (-6.0~-8.2mPD) at P2 CH132-CH223 (16674m3) (1000m3/day)	P2-Cal.C	19.0	1.0	02-Sep-20 A	01-Dec-20	-191.5	94.74%	-56.0					
LC30095	Excavation to Formation Level (-6.0mPD to -6.74mPD) at P2 CH105-132 (822m3) and Construction of Blinding	P2-Cal.C	5.0	5.0	01-Dec-20	05-Dec-20	-170.5	0%	0.0					
LC30090	Construction of Blinding Layer at P2 CH132-CH223	P2-Cal.C	5.0	5.0	02-Dec-20	07-Dec-20	-191.5	0%	0.0					
Base Slab (Team 1 to 4)														
LC18105	Construction of base slab - bay 3 (Team 2)	P2-Cal.C	10.0	9.0	09-Nov-20 A	01-Dec-20	-198.5	10%	-10.0					
LC18112	Construction of base slab - bay 1 (Team 1)	P2-Cal.C	10.0	10.0	21-Nov-20	02-Dec-20	-199.5	0%	0.0					
LC18100	Construction of base slab - bay 4 (Team 2)	P2-Cal.C	10.0	10.0	02-Dec-20	12-Dec-20	-198.5	0%	0.0					

- Primary Baseline
- Actual Work
- Remaining Work
- Critical ...
- Baselin...
- Milesto...

NE/2015/02 Tseung Kwan O - Lam Tin Tunnel-Road P2 and Associated Works (Nov-20)

3 Monthly Rolling Programme Update (Data Date : 20 Nov 2020)
Page : 5 of 11

Date	Revision	Checked	Approved
20-Nov-20			



- Primary Baseline
- Critical ...
- Actual Work
- Baselin...
- Remaining Work
- ◆ Milesto...

NE/2015/02 Tseung Kwan O - Lam Tin Tunnel-Road P2 and Associated Works (Nov-20)

3 Monthly Rolling Programme Update
(Data Date : 20 Nov 2020)
Page : 6 of 11

Date	Revision	Checked	Approved
20-Nov-20			

Activity ID	Activity Name	Calendar	Original Duration	Remaining Dur	Start	Finish	Total Float	Activity % Complete	Variance - Act Duration	2020													
										Nov	Dec	2021			2021			2021					
											Nov	Dec	Jan	Feb	Mar	Apr	May	Jun	Jul	Aug	Sep	Oct	
LC18170	Construction of pour wall (1st East, West and Mid interim level -2.2mPD) - bay 7 (Team 3)	P2-Cal.C	10.0	10.0	16-Feb-21	26-Feb-21	-191.5	0%	0.0														
2nd Wall (Team 1 to 6)																							
LC18260	Construction of pour wall (2nd East, West and Mid interim level +0.8mPD) - bay 3 (Team 2)	P2-Cal.C	10.0	10.0	22-Jan-21	02-Feb-21	-199.5	0%	0.0														
LC18267	Construction of pour wall (2nd East, West and Mid interim level +0.8mPD) - bay 1 (Team 1)	P2-Cal.C	10.0	10.0	22-Jan-21	02-Feb-21	-199.5	0%	0.0														
LC18255	Construction of pour wall (2nd East, West and Mid interim level +0.8mPD) - bay 4 (Team 2)	P2-Cal.C	10.0	10.0	03-Feb-21	17-Feb-21	-199.5	0%	0.0														
LC18265	Construction of pour wall (2nd East, West and Mid interim level +0.8mPD) - bay 2 (Team 1)	P2-Cal.C	10.0	10.0	03-Feb-21	17-Feb-21	-199.5	0%	0.0														
LC18274-01	Waterproofing and Backfilling from -3.8~-2.8mPD to +0.2mPD for Bay 1 & 3 (14 Layers, 1D/layer)	P2-Cal.C	16.0	16.0	03-Feb-21	24-Feb-21	-199.5	0%	0.0														
LC18274-11	Waterproofing and Backfilling from -3.8~-2.8mPD to +0.2mPD for Bay 2 & 4 (14 Layers, 1D/layer)	P2-Cal.C	16.0	16.0	18-Feb-21	08-Mar-21	-199.5	0%	0.0														
Fixed Foam Room/Sump Pit Room/Stormwater Plant Room																							
Fixed Foam Room/Sump Pit Room (Team 7)																							
LC18375	Construction of base slab (Team 7)	P2-Cal.C	10.0	3.0	20-Oct-20 A	24-Nov-20	-178.5	70%	-20.0														
LC18385	Construction of Eastern wall up to -7.3mPD (Team 7)	P2-Cal.C	7.0	7.0	25-Nov-20	02-Dec-20	-178.5	0%	0.0														
LC18390	Construction of Western wall up to -5.0mPD (Team 7)	P2-Cal.C	10.0	10.0	03-Dec-20	14-Dec-20	-178.5	0%	0.0														
LC18405	Erection of scaffold/finework for 1st slab construction	P2-Cal.C	7.0	7.0	15-Dec-20	22-Dec-20	-178.5	0%	0.0														
LC18410	Construction of 2nd pour wall and slab up to -6.0mPD (Team 7)	P2-Cal.C	10.0	10.0	23-Dec-20	06-Jan-21	-178.5	0%	0.0														
LC18395	Installation of waterproofing works to 1st wall	P2-Cal.C	7.0	7.0	07-Jan-21	14-Jan-21	-155.5	0%	0.0														
LC18400	Backfilling works for Concrete Infill (1st -10.1mPD to -5.3mPD)	P2-Cal.C	4.0	4.0	15-Jan-21	19-Jan-21	-155.5	0%	0.0														
Stormwater Plant Room (Team 7 & 8)																							
LC18415-001	Pile Rectification Works	P2-Cal.C	6.0	8.0	09-Nov-20 A	30-Nov-20	-199.5	0%	-13.0														
LC18415-01	Excavation to -16.4mPD (723m3) (NCE to be issued)	P2-Cal.C	7.0	7.0	01-Dec-20	08-Dec-20	-199.5	0%	0.0														
LC18415-02	Construction of Mass Concrete and Waterproofing for Base Slab (NCE to be issued)	P2-Cal.C	8.0	8.0	09-Dec-20	17-Dec-20	-199.5	0%	0.0														
LC18415-03	Cast mass concrete fill / vertical blinding	P2-Cal.C	10.0	10.0	18-Dec-20	31-Dec-20	-199.5	0%	0.0														
LC18416	Construction of part of base slab (Team 8)	P2-Cal.C	8.0	8.0	02-Jan-21	11-Jan-21	-199.5	0%	0.0														
LC18420	Construction of main tunnel base slab - bay 5 (Team 8)	P2-Cal.C	10.0	10.0	02-Jan-21	13-Jan-21	-199.5	0%	0.0														
LC18417	Construction of wall up to -7.3mPD (Team 8)	P2-Cal.C	8.0	8.0	12-Jan-21	20-Jan-21	-199.5	0%	0.0														
LC18425	Construction of main tunnel base slab - bay 6 (Team 8)	P2-Cal.C	10.0	10.0	14-Jan-21	25-Jan-21	-199.5	0%	0.0														
LC18460	Installation of 3rd layer strut/water @-10.0mPD	P2-Cal.C	6.0	6.0	21-Jan-21	27-Jan-21	-199.5	0%	0.0														
LC18465	Excavation to formation -13.8 ~ 14.5mPD	P2-Cal.C	3.0	3.0	28-Jan-21	30-Jan-21	-199.5	0%	0.0														
LC18430	Construction of Mid wall up to -5.0mPD for Bay 5 (Team 8)	P2-Cal.C	10.0	10.0	26-Jan-21	05-Feb-21	-180.5	0%	0.0														
LC18470	Construction of 2nd half base slab for Well Set (Team 7)	P2-Cal.C	9.0	9.0	01-Feb-21	10-Feb-21	-199.5	0%	0.0														
LC18430-01	Construction of Mid wall up to -5.0mPD for Bay 6 (Team 8)	P2-Cal.C	10.0	10.0	06-Feb-21	20-Feb-21	-180.5	0%	0.0														
LC18475	Concrete Infill and Removal of 3rd water/strut @ -10.0mPD	P2-Cal.C	8.0	8.0	11-Feb-21	23-Feb-21	-199.5	0%	0.0														
U-Trough A and B																							
"U-Trough A Type 3 and U-Trough B Type 4" from S200 CH821 to P2 CH105																							
ELS																							
LC21045	Excavation to -3.5 ~ -1.0mPD (1860m3)	P2-Cal.C	10.0	6.0	13-Nov-20 A	27-Nov-20	-159.5	40%	-3.0														
LC21050	Installation of 3rd layer strut/water @-2.5mPD	P2-Cal.C	15.0	15.0	28-Nov-20	15-Dec-20	-148.5	0%	0.0														
LC21055	Excavation to formation -6.475 ~ -0.66mPD (390m3)	P2-Cal.C	10.0	10.0	16-Dec-20	29-Dec-20	-148.5	0%	0.0														

Primary Baseline
 Critical ...

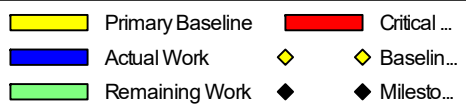
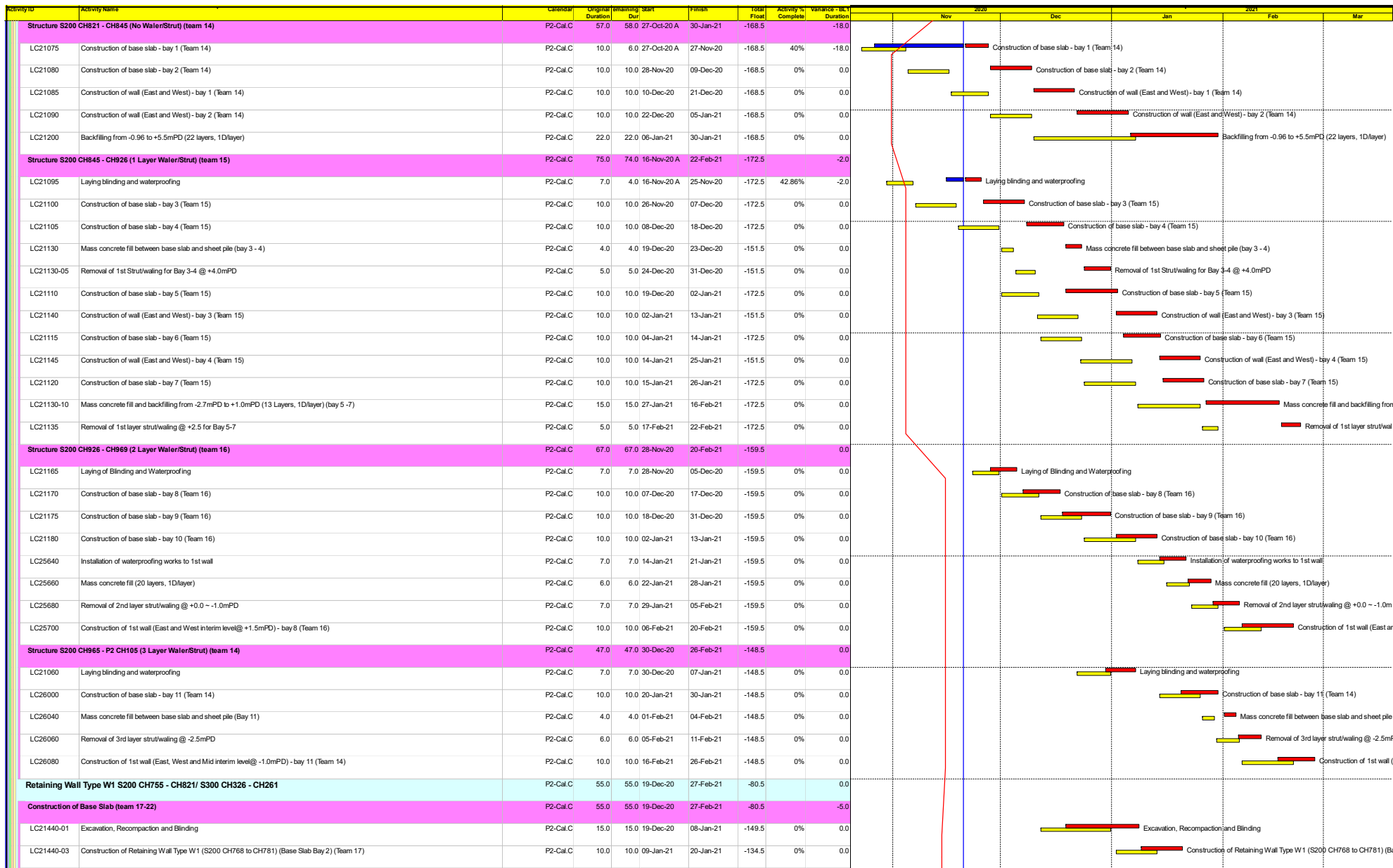
Actual Work
 Baselin...

Remaining Work
 Milesto...

NE/2015/02 Tseung Kwan O - Lam Tin Tunnel-Road P2 and Associated Works (Nov-20)

3 Monthly Rolling Programme Update
 (Data Date : 20 Nov 2020)
 Page : 7 of 11

Date	Revision	Checked	Approved
20-Nov-20			



NE/2015/02 Tseung Kwan O - Lam Tin Tunnel-Road P2 and Associated Works (Nov-20)

3 Monthly Rolling Programme Update (Data Date : 20 Nov 2020) Page : 8 of 11

Date	Revision	Checked	Approved
20-Nov-20			

Activity ID	Activity Name	Calendar	Original Duration	Remaining Dur	Start	Finish	Total Float	Activity % Complete	Variance - Act Duration	2020				2021									
										Nov	Dec	Jan	Feb	Mar									
LC21440-05	Construction of Retaining Wall Type W1 (S200 CH795 to CH809) (Base Slab Bay 4) (Team 18)	P2-Cal.C	10.0	10.0	09-Jan-21	20-Jan-21	-134.5	0%	0.0														
LC21440-065	Construction of Retaining Wall Type W1 (S200 CH287 to CH274 East) (Base Slab Bay 11) (Team 20)	P2-Cal.C	10.0	10.0	09-Jan-21	20-Jan-21	-134.5	0%	0.0														
LC21440-02	Construction of Retaining Wall Type W1 (S200 CH755 to CH768) (Base Slab Bay 1) (Team 17)	P2-Cal.C	10.0	10.0	21-Jan-21	01-Feb-21	-134.5	0%	0.0														
LC21440-04	Construction of Retaining Wall Type W1 (S200 CH781 to CH795) (Base Slab Bay 3) (Team 18)	P2-Cal.C	10.0	10.0	21-Jan-21	01-Feb-21	-134.5	0%	0.0														
LC21440-06	Construction of Retaining Wall Type W1 (S200 CH809 to CH821) (Base Slab Bay 5) (Team 19)	P2-Cal.C	10.0	10.0	21-Jan-21	01-Feb-21	-134.5	0%	0.0														
LC21440-066	Construction of Retaining Wall Type W1 (S200 CH274 to CH261 East) (Base Slab Bay 12) (Team 20)	P2-Cal.C	10.0	10.0	21-Jan-21	01-Feb-21	-134.5	0%	0.0														
LC21440-0630	Cutting of Sheet Pile at S200 CH821 for Construction of Bay 10	P2-Cal.C	5.0	5.0	01-Feb-21	05-Feb-21	-168.5	0%	0.0														
LC21440-064	Construction of Retaining Wall Type W1 (S200 CH274 to CH261 West) (Base Slab Bay 10) (Team 21)	P2-Cal.C	10.0	10.0	06-Feb-21	20-Feb-21	-168.5	0%	0.0														
LC21440-061	Construction of Retaining Wall Type W1 (S200 CH313 to CH300) (Base Slab Bay 7) (Team 19)	P2-Cal.C	10.0	10.0	17-Feb-21	27-Feb-21	-80.5	0%	0.0														
Construction of 1st Pour Wall (team 17-22)										P2-Cal.C	20.0	20.0	02-Feb-21	27-Feb-21	-134.5	0%	0.0						
LC21440-08	Construction of Retaining Wall Type W1 (S200 CH768 to CH781) (1st pour Wall Bay 2) (Team 17)	P2-Cal.C	10.0	10.0	02-Feb-21	16-Feb-21	-134.5	0%	0.0														
LC21440-10	Construction of Retaining Wall Type W1 (S200 CH795 to CH809) (1st pour Wall Bay 4) (Team 18)	P2-Cal.C	10.0	10.0	02-Feb-21	16-Feb-21	-134.5	0%	0.0														
LC21440-115	Construction of Retaining Wall Type W1 (S200 CH287 to CH274 East) (1st pour Wall Bay 11) (Team 20)	P2-Cal.C	10.0	10.0	02-Feb-21	16-Feb-21	-134.5	0%	0.0														
LC21440-11	Construction of Retaining Wall Type W1 (S200 CH809 to CH821) (1st pour Wall Bay 5) (Team 18)	P2-Cal.C	10.0	10.0	17-Feb-21	27-Feb-21	-134.5	0%	0.0														
Construction of 2nd Pour Wall (team 17-22)										P2-Cal.C	10.0	10.0	17-Feb-21	27-Feb-21	-134.5	0%	0.0						
LC21440-15	Construction of Retaining Wall Type W1 (S200 CH768 to CH781) (2nd pour Wall Bay 2) (Team 17)	P2-Cal.C	10.0	10.0	17-Feb-21	27-Feb-21	-134.5	0%	0.0														
LC21440-22	Construction of Retaining Wall Type W1 (S200 CH287 to CH274 East) (2nd pour Wall Bay 11) (Team 20)	P2-Cal.C	10.0	10.0	17-Feb-21	27-Feb-21	-134.5	0%	0.0														
"U-Trough A Type 1 & 2" from S200 CH674 - CH821, S100/CH280, S300/CH403.5 & S400/CH158.1										P2-Cal.C	98.0	97.0	28-Oct-20 A	20-Mar-21	-139.5		-20.0						
ELS (S200 CH674 - CH755 & S100/CH280)										P2-Cal.C	34.0	12.0	28-Oct-20 A	04-Dec-20	-119.5		-5.0						
LC22220	Excavation and Re-compaction for S200/S100 to Pile Cap Bottom Level (+4.0mPD)	P2-Cal.C	25.0	9.0	28-Oct-20 A	01-Dec-20	-119.5	64%	-5.0														
LC22230	Construction of Blinding and Waterproofing	P2-Cal.C	3.0	3.0	02-Dec-20	04-Dec-20	-119.5	0%	0.0														
ELS (S300/CH403.5 & S400/CH158.1)										P2-Cal.C	28.0	27.0	09-Nov-20 A	22-Dec-20	-181.5		-10.0						
LC22820	Excavation and Re-compaction for S300/S400 to Pile Cap Bottom Level (+4.0mPD)	P2-Cal.C	25.0	24.0	09-Nov-20 A	18-Dec-20	-181.5	4%	-10.0														
LC22830	Construction of Blinding and Waterproofing	P2-Cal.C	3.0	3.0	19-Dec-20	22-Dec-20	-181.5	0%	0.0														
Structure "U-Trough A Type 1" from S200 CH674 - CH755 & S100/CH280										P2-Cal.C	60.0	60.0	05-Dec-20	19-Feb-21	-119.5		0.0						
Base Slab (team 23-26)										P2-Cal.C	20.0	20.0	05-Dec-20	30-Dec-20	-99.5		0.0						
LC22850	Construction of U-trough A Structure Bay 1 (S100 CH280 - S200 CH674) (Base Slab) (Team 23)	P2-Cal.C	10.0	10.0	05-Dec-20	16-Dec-20	-119.5	0%	0.0														
LC22870	Construction of U-trough A Structure Bay 3 (S200 CH683 - S200 CH695) (Base Slab) (Team 24)	P2-Cal.C	10.0	10.0	05-Dec-20	16-Dec-20	-119.5	0%	0.0														
LC22890	Construction of U-trough A Structure Bay 5 (S200 CH707 - S200 CH719) (Base Slab) (Team 25)	P2-Cal.C	10.0	10.0	05-Dec-20	16-Dec-20	-119.5	0%	0.0														
LC22910	Construction of U-trough A Structure Bay 7 (S200 CH731 - S200 CH743) (Base Slab) (Team 26)	P2-Cal.C	10.0	10.0	05-Dec-20	16-Dec-20	-119.5	0%	0.0														
LC22920	Construction of U-trough A Structure Bay 8 (S200 CH743 - S200 CH755) (Base Slab) (Team 26)	P2-Cal.C	10.0	10.0	17-Dec-20	30-Dec-20	-99.5	0%	0.0														
LC22860	Construction of U-trough A Structure Bay 2 (S200 CH674 - S200 CH683) (Base Slab) (Team 23)	P2-Cal.C	10.0	10.0	17-Dec-20	30-Dec-20	-119.5	0%	0.0														
LC22880	Construction of U-trough A Structure Bay 4 (S200 CH695 - S200 CH707) (Base Slab) (Team 24)	P2-Cal.C	10.0	10.0	17-Dec-20	30-Dec-20	-119.5	0%	0.0														
LC22900	Construction of U-trough A Structure Bay 6 (S200 CH719 - S200 CH731) (Base Slab) (Team 25)	P2-Cal.C	10.0	10.0	17-Dec-20	30-Dec-20	-119.5	0%	0.0														
1st Pour Wall (Team 23-26)										P2-Cal.C	20.0	20.0	31-Dec-20	23-Jan-21	-99.5		0.0						
LC23000	Construction of U-trough A Structure Bay 8 (S200 CH743 - S200 CH755) (1st Pour Wall) (Team 26)	P2-Cal.C	10.0	10.0	31-Dec-20	12-Jan-21	-99.5	0%	0.0														
LC22940	Construction of U-trough A Structure Bay 2 (S200 CH674 - S200 CH683) (1st Pour Wall) (Team 23)	P2-Cal.C	10.0	10.0	31-Dec-20	12-Jan-21	-119.5	0%	0.0														
LC22960	Construction of U-trough A Structure Bay 4 (S200 CH695 - S200 CH707) (1st Pour Wall) (Team 24)	P2-Cal.C	10.0	10.0	31-Dec-20	12-Jan-21	-119.5	0%	0.0														

	Primary Baseline		Critical ...
	Actual Work		Baselin...
	Remaining Work		Milesto...

NE/2015/02 Tseung Kwan O - Lam Tin Tunnel-Road P2 and Associated Works (Nov-20)

3 Monthly Rolling Programme Update (Data Date : 20 Nov 2020)
Page : 9 of 11

Date	Revision	Checked	Approved
20-Nov-20			

Activity ID	Activity Name	Calendar	Original Duration	Remaining Dur	Start	Finish	Total Float	Activity % Complete	Variance - Act Duration	2020													
										Nov	Dec	Jan	Feb	Mar	Apr	May	Jun	Jul	Aug	Sep	Oct		
LC22980	Construction of U-trough A Structure Bay 6 (S200 CH719 - S200 CH731) (1st Pour Wall) (Team 25)	P2-Cal.C	10.0	10.0	31-Dec-20	12-Jan-21	-119.5	0%	0.0														
LC22990	Construction of U-trough A Structure Bay 7 (S200 CH731 - S200 CH743) (1st Pour Wall) (Team 26)	P2-Cal.C	10.0	10.0	13-Jan-21	23-Jan-21	-99.5	0%	0.0														
LC22930	Construction of U-trough A Structure Bay 1 (S100 CH280 - S200 CH674) (1st Pour Wall) (Team 23)	P2-Cal.C	10.0	10.0	13-Jan-21	23-Jan-21	-119.5	0%	0.0														
LC22950	Construction of U-trough A Structure Bay 3 (S200 CH683 - S200 CH795) (1st Pour Wall) (Team 24)	P2-Cal.C	10.0	10.0	13-Jan-21	23-Jan-21	-119.5	0%	0.0														
LC22970	Construction of U-trough A Structure Bay 5 (S200 CH707 - S200 CH719) (1st Pour Wall) (Team 25)	P2-Cal.C	10.0	10.0	13-Jan-21	23-Jan-21	-119.5	0%	0.0														
2nd Pour Wall (team 23-25)																							
LC23040	Construction of U-trough A Structure Bay 4 (S200 CH707 - S200 CH719) (2nd Pour Wall) (Team 24)	P2-Cal.C	10.0	10.0	25-Jan-21	04-Feb-21	-119.5	0%	0.0														
LC23020	Construction of U-trough A Structure Bay 2 (S200 CH683 - S200 CH695) (2nd Pour Wall) (Team 23)	P2-Cal.C	10.0	10.0	25-Jan-21	04-Feb-21	-119.5	0%	0.0														
LC23050	Construction of U-trough A Structure Bay 5 (S200 CH719 - S200 CH731) (2nd Pour Wall) (Team 25)	P2-Cal.C	10.0	10.0	05-Feb-21	19-Feb-21	-119.5	0%	0.0														
LC23010	Construction of U-trough A Structure Bay 1 (S100 CH280 - S200 CH683) (2nd Pour Wall) (Team 23)	P2-Cal.C	10.0	10.0	05-Feb-21	19-Feb-21	-119.5	0%	0.0														
LC23030	Construction of U-trough A Structure Bay 3 (S200 CH695 - S200 CH707) (2nd Pour Wall) (Team 24)	P2-Cal.C	10.0	10.0	05-Feb-21	19-Feb-21	-119.5	0%	0.0														
Structure "U-Trough A Type 1 & 2" from S300/CH403.5 & S400/CH158.1																							
Base Slab (Team 27-28)																							
LC23100	Construction of U-trough A Structure S300 Bay 3 (S300 CH379 - S300 CH367) (Base Slab) (Team 28)	P2-Cal.C	10.0	10.0	23-Dec-20	06-Jan-21	-181.5	0%	0.0														
LC23080	Construction of U-trough A Structure S300 Bay 1 (S300 CH403 - S300 CH391) (Base Slab) (Team 27)	P2-Cal.C	10.0	10.0	23-Dec-20	06-Jan-21	-181.5	0%	0.0														
LC23110	Construction of U-trough A Structure S300 Bay 4 (S300 CH367 - S300 CH355) (Base Slab) (Team 28)	P2-Cal.C	10.0	10.0	07-Jan-21	18-Jan-21	-181.5	0%	0.0														
LC23090	Construction of U-trough A Structure S300 Bay 2 (S300 CH391 - S300 CH379) (Base Slab) (Team 27)	P2-Cal.C	10.0	10.0	07-Jan-21	18-Jan-21	-181.5	0%	0.0														
LC23120	Construction of U-trough A Structure S400 Bay 1 (S400 CH158 - S300 CH148) (Base Slab) (Team 27)	P2-Cal.C	10.0	10.0	30-Jan-21	10-Feb-21	-181.5	0%	0.0														
LC23140	Construction of U-trough A Structure S400 Bay 2 (S400 CH136 - S300 CH124) (Base Slab) (Team 28)	P2-Cal.C	10.0	10.0	30-Jan-21	10-Feb-21	-181.5	0%	0.0														
LC23130	Construction of U-trough A Structure S400 Bay 2 (S400 CH148 - S300 CH136) (Base Slab) (Team 27)	P2-Cal.C	10.0	10.0	11-Feb-21	25-Feb-21	-181.5	0%	0.0														
LC23150	Construction of U-trough A Structure S400 Bay 4 (S400 CH124 - S300 CH111) (Base Slab) (Team 28)	P2-Cal.C	10.0	10.0	11-Feb-21	25-Feb-21	-181.5	0%	0.0														
Wall (Team 27-28)																							
LC23190	Construction of U-trough A Structure S300 Bay 2 (S300 CH391 - S300 CH379) (Wall) (Team 27)	P2-Cal.C	10.0	10.0	19-Jan-21	29-Jan-21	-181.5	0%	0.0														
LC23210	Construction of U-trough A Structure S300 Bay 4 (S300 CH367 - S300 CH355) (Wall) (Team 28)	P2-Cal.C	10.0	10.0	19-Jan-21	29-Jan-21	-181.5	0%	0.0														
LC23180	Construction of U-trough A Structure S300 Bay 1 (S300 CH403 - S300 CH391) (Wall) (Team 27)	P2-Cal.C	10.0	10.0	30-Jan-21	10-Feb-21	-181.5	0%	0.0														
LC23200	Construction of U-trough A Structure S300 Bay 3 (S300 CH379 - S300 CH367) (Wall) (Team 28)	P2-Cal.C	10.0	10.0	30-Jan-21	10-Feb-21	-181.5	0%	0.0														
Remaining Works																							
LC23350-000	Road and Drainage Works and Backfilling to Formation (S300 CH403 - S300 CH355)	P2-Cal.C	30.0	30.0	11-Feb-21	20-Mar-21	-139.5	0%	0.0														
U-Trough C Structures																							
"U-Trough C Type 1, 2, 3 & 4" from CT01 CH117.156 - CH366																							
ELS & Structure "U-Trough C Type 1, 2, 3 & 4" from CT01 CH117.156 - CH366																							
Base Slab (Team 29)																							
LC23470	Excavation, Re-compaction and Installation of Capping Plate	P2-Cal.C	35.0	31.0	09-Nov-20 A	29-Dec-20	-185.5	11.43%	-7.0														
LC23480	Construction of Cycle Track Bay 1 Base Slab CT01 CH366 to CH354 (Team 29)	P2-Cal.C	10.0	10.0	30-Dec-20	11-Jan-21	-185.5	0%	0.0														
LC23490	Construction of Cycle Track Bay 2 Base Slab CT01 CH354 to CH342 (Team 29)	P2-Cal.C	10.0	10.0	12-Jan-21	22-Jan-21	-185.5	0%	0.0														
LC23500	Construction of Cycle Track Bay 3 Base Slab CT01 CH342 to CH330 (Team 29)	P2-Cal.C	10.0	10.0	23-Jan-21	03-Feb-21	-185.5	0%	0.0														
LC23510	Construction of Cycle Track Bay 4 Base Slab CT01 CH330 to CH318 (Team 29)	P2-Cal.C	10.0	10.0	04-Feb-21	18-Feb-21	-185.5	0%	0.0														
LC23520	Construction of Cycle Track Bay 5 Base Slab CT01 CH318 to CH306 (Team 29)	P2-Cal.C	10.0	10.0	19-Feb-21	02-Mar-21	-185.5	0%	0.0														

█ Primary Baseline █ Critical ...
█ Actual Work ◊ Baselin...
█ Remaining Work ◆ Milesto...

NE/2015/02 Tseung Kwan O - Lam Tin Tunnel-Road P2 and Associated Works (Nov-20)

3 Monthly Rolling Programme Update (Data Date : 20 Nov 2020)
Page : 10 of 11

Date	Revision	Checked	Approved
20-Nov-20			

Activity ID	Activity Name	Calendar	Original Duration	Remaining Dur	Start	Finish	Total Float	Activity % Complete	Variance - Act Duration	2020											
										Nov	Dec	2021			Jan	Feb	Mar				
1st Wall (Team 30)																					
LC23690	Construction of Cycle Track Bay 1 1st Wall CT01 CH366 to CH354 (Team 30)	P2-Cal.C	10.0	10.0	12-Jan-21	22-Jan-21	-185.5	0%	0.0												
LC23700	Construction of Cycle Track Bay 2 1st Wall CT01 CH354 to CH342 (Team 30)	P2-Cal.C	10.0	10.0	23-Jan-21	03-Feb-21	-185.5	0%	0.0												
LC23710	Construction of Cycle Track Bay 3 1st Wall CT01 CH342 to CH330 (Team 30)	P2-Cal.C	10.0	10.0	04-Feb-21	18-Feb-21	-185.5	0%	0.0												
LC23720	Construction of Cycle Track Bay 4 1st Wall CT01 CH330 to CH318 (Team 30)	P2-Cal.C	10.0	10.0	19-Feb-21	02-Mar-21	-185.5	0%	0.0												
2nd Wall (Team 31)																					
LC90550	Construction of Cycle Track Bay 1 2nd Wall CT01 CH366 to CH354 (Team 31)	P2-Cal.C	10.0	10.0	23-Jan-21	03-Feb-21	-105.5	0%	0.0												
LC90560	Construction of Cycle Track Bay 2 2nd Wall CT01 CH354 to CH342 (Team 31)	P2-Cal.C	10.0	10.0	04-Feb-21	18-Feb-21	-105.5	0%	0.0												
LC90570	Construction of Cycle Track Bay 3 2nd Wall CT01 CH342 to CH330 (Team 31)	P2-Cal.C	10.0	10.0	19-Feb-21	02-Mar-21	-105.5	0%	0.0												
TKO Bridge Abutment																					
Coping B5 to B15																					
LC27210	Construction of Coping Wall B13	P2-Cal.C	6.0	3.0	01-Sep-20 A	24-Nov-20	147.5	50%	-64.0												
LC27260	Construction of Coping Wall B5	P2-Cal.C	6.0	3.0	13-Nov-20 A	24-Nov-20	147.5	50%	-4.0												
Section 4 of the Works - Preservation and Protection of Existing Trees																					
LC25260	Preservation and Protection of Existing Trees	P2-Cal.A	1451.0	406.0	12-Jan-17 A	31-Dec-21	-216.5	72.02%	-364.0												
LC25280	Nursery Transplanted Trees at the Contractor's holding nursery	P2-Cal.A	1177.0	406.0	28-Apr-17 A	31-Dec-21	-216.5	65.51%	-532.0												

- Primary Baseline
- Critical ...
- Actual Work
- Remaining Work
- Baselin...
- Milesto...

NE/2015/02 Tseung Kwan O - Lam Tin Tunnel-Road P2 and Associated Works (Nov-20)

3 Monthly Rolling Programme Update
(Data Date : 20 Nov 2020)
Page : 11 of 11

Date	Revision	Checked	Approved
20-Nov-20			

High Level 3 Months Look Ahead Programme			
Activities	Jan-21	Feb-21	Mar-21
Trial pit			
Underground utilities detection			
Temporary traffic arrangement Setup			
Construction of drainage and watermain			
Pile Cap construction			
Asphalt Paving			
Pier, Staircase and lift shaft construction			

Activity ID	Activity Name	Original Duration	Remaining Duration	Schedule % Complete	Start	Finish	Total Float	Classic Schedule Layout																	
								Qtr 4, 2020	Qtr 1, 2021			Qtr 2, 2021													
								Sep	Oct	Nov	Dec	Jan	Feb	Mar	Apr										
NE/2017/06-3 NE/2017/06 TKO-LTT TCSS_3MRP								84	84	0%	20-Oct-20	30-Jan-21	874												
NE/2017/06-3.CW Contract Award / Commencement of Works								0	0	0%			0												
NE/2017/06-3.AD Access Date								90	90	0%	01-Nov-20	30-Jan-21	20												
NE/2017/06-3.AD.000 General								90	90	0%	01-Nov-20	30-Jan-21	20												
NE/2017/06-3.AD.000.AD Access Date								90	90	0%	01-Nov-20	30-Jan-21	20												
DWP10670 Portion 1A of the Site								0	0	0%	31-Dec-20*		19	◆ Portion 1A of the Site, 31-Dec-20*											
DWP10672 Portion 1B of the Site								0	0	0%	01-Nov-20*		28	◆ Portion 1B of the Site, 01-Nov-20*											
DWP10674 Portion 1C of the Site								0	0	0%	30-Jan-21*		20	◆ Portion 1C of the Site, 30-Jan-21*											
NE/2017/06-3.KD Key Date and Stages / Sections of the Achievement								0	0	0%			0												
NE/2017/06-3.MD Cost Centre Milestone Dates								67	67	0%	20-Oct-20	11-Jan-21	500												
NE/2017/06-3.MD.1 General								67	67	0%	20-Oct-20	11-Jan-21	500												
NE/2017/06-3.MD.1.1 CC B - Central System - TKOLTT								0	0	0%	04-Jan-21	04-Jan-21	175												
DWP8850 Acceptance of Factory Acceptance Tests of all equipment for Works								0	0	0%	04-Jan-21	04-Jan-21	175	◆ Acceptance of Factory Acceptance Tests of all equipment for Works,											
NE/2017/06-3.MD.1.2 CC B1 - Central System - CBL								76	76	0%	20-Oct-20	04-Jan-21	607												
DWP8900 Acceptance of Final System Proposal for Works								0	0	0%	20-Oct-20	04-Jan-21	683	◆ Acceptance of Final System Proposal for Works,											
DWP8910 Acceptance of Factory Acceptance Tests of all equipment for Works								0	0	0%	04-Jan-21	04-Jan-21	607	◆ Acceptance of Factory Acceptance Tests of all equipment for Works,											
NE/2017/06-3.MD.1.3 CC C - Traffic Control Devices - TKOLTT								71	71	0%	20-Oct-20	30-Dec-20	180												
DWP8960 Acceptance of Final System Proposal for Works								0	0	0%	20-Oct-20	30-Dec-20	251	◆ Acceptance of Final System Proposal for Works,											
DWP8970 Acceptance of Factory Acceptance Tests of all equipment for Works								0	0	0%	30-Dec-20	30-Dec-20	180	◆ Acceptance of Factory Acceptance Tests of all equipment for Works,											
NE/2017/06-3.MD.1.4 CC C1 - Traffic Control Devices - CBL								71	71	0%	20-Oct-20	30-Dec-20	612												
DWP9020 Acceptance of Final System Proposal for Works								0	0	0%	20-Oct-20	30-Dec-20	683	◆ Acceptance of Final System Proposal for Works,											
DWP9030 Acceptance of Factory Acceptance Tests of all equipment for Works								0	0	0%	30-Dec-20	30-Dec-20	612	◆ Acceptance of Factory Acceptance Tests of all equipment for Works,											
NE/2017/06-3.MD.1.5 CC D - Communication System - TKOLTT								7	7	0%	20-Oct-20	27-Oct-20	244												
DWP9140 Acceptance of Final System Proposal for Works								0	0	0%	20-Oct-20	27-Oct-20	251	◆ Acceptance of Final System Proposal for Works,											
DWP9150 Acceptance of Factory Acceptance Tests of all equipment for Works								0	0	0%	27-Oct-20	27-Oct-20	244	◆ Acceptance of Factory Acceptance Tests of all equipment for Works,											
NE/2017/06-3.MD.1.6 CC D1 - Communication System - CBL								7	7	0%	20-Oct-20	27-Oct-20	676												
DWP9080 Acceptance of Final System Proposal for Works								0	0	0%	20-Oct-20	27-Oct-20	683	◆ Acceptance of Final System Proposal for Works,											
DWP9090 Acceptance of Factory Acceptance Tests of all equipment for Works								0	0	0%	27-Oct-20	27-Oct-20	676	◆ Acceptance of Factory Acceptance Tests of all equipment for Works,											
NE/2017/06-3.MD.1.7 CC E - CCTV System - TKOLTT								71	71	0%	20-Oct-20	30-Dec-20	180												
DWP9200 Acceptance of Final System Proposal for Works								0	0	0%	20-Oct-20	30-Dec-20	251	◆ Acceptance of Final System Proposal for Works,											
DWP9210 Acceptance of Factory Acceptance Tests of all equipment for Works								0	0	0%	30-Dec-20	30-Dec-20	180	◆ Acceptance of Factory Acceptance Tests of all equipment for Works,											
NE/2017/06-3.MD.1.8 CC E1 - CCTV System - CBL								71	71	0%	20-Oct-20	30-Dec-20	612												
DWP9260 Acceptance of Final System Proposal for Works								0	0	0%	20-Oct-20	30-Dec-20	683	◆ Acceptance of Final System Proposal for Works,											
DWP9270 Acceptance of Factory Acceptance Tests of all equipment for Works								0	0	0%	30-Dec-20	30-Dec-20	612	◆ Acceptance of Factory Acceptance Tests of all equipment for Works,											
NE/2017/06-3.MD.1.9 CC F - Building PABX System - TKOLTT								71	71	0%	20-Oct-20	30-Dec-20	180												
DWP9320 Acceptance of Final System Proposal for Works								0	0	0%	20-Oct-20	30-Dec-20	251	◆ Acceptance of Final System Proposal for Works,											
DWP9330 Acceptance of Factory Acceptance Tests of all equipment for Works								0	0	0%	30-Dec-20	30-Dec-20	180	◆ Acceptance of Factory Acceptance Tests of all equipment for Works,											
NE/2017/06-3.MD.1.11 CC G - ET System - TKOLTT								71	71	0%	20-Oct-20	30-Dec-20	180												
DWP9440 Acceptance of Final System Proposal for Works								0	0	0%	20-Oct-20	30-Dec-20	251	◆ Acceptance of Final System Proposal for Works,											
DWP9450 Acceptance of Factory Acceptance Tests of all equipment for Works								0	0	0%	30-Dec-20	30-Dec-20	180	◆ Acceptance of Factory Acceptance Tests of all equipment for Works,											
NE/2017/06-3.MD.1.10 CC H - PA System - TKOLTT								71	71	0%	20-Oct-20	30-Dec-20	180												
DWP9380 Acceptance of Final System Proposal for Works								0	0	0%	20-Oct-20	30-Dec-20	251	◆ Acceptance of Final System Proposal for Works,											
DWP9390 Acceptance of Factory Acceptance Tests of all equipment for Works								0	0	0%	30-Dec-20	30-Dec-20	180	◆ Acceptance of Factory Acceptance Tests of all equipment for Works,											
NE/2017/06-3.MD.1.12 CC I - Radio System - TKOLTT								26	26	0%	20-Oct-20	14-Nov-20	225												
DWP9500 Acceptance of Final System Proposal for Works								0	0	0%	20-Oct-20	14-Nov-20	251	◆ Acceptance of Final System Proposal for Works,											
DWP9510 Acceptance of Factory Acceptance Tests of all equipment for Works								0	0	0%	14-Nov-20	14-Nov-20	225	◆ Acceptance of Factory Acceptance Tests of all equipment for Works,											
NE/2017/06-3.MD.1.13 CC J - Detection System - TKOLTT								71	71	0%	20-Oct-20	30-Dec-20	180												
DWP9560 Acceptance of Final System Proposal for Works								0	0	0%	20-Oct-20	30-Dec-20	251	◆ Acceptance of Final System Proposal for Works,											
DWP9570 Acceptance of Factory Acceptance Tests of all equipment for Works								0	0	0%	30-Dec-20	30-Dec-20	180	◆ Acceptance of Factory Acceptance Tests of all equipment for Works,											
NE/2017/06-3.MD.1.15 CC J1 - Detection System - CBL								71	71	0%	20-Oct-20	30-Dec-20	612												
DWP9680 Acceptance of Final System Proposal for Works								0	0	0%	20-Oct-20	30-Dec-20	683	◆ Acceptance of Final System Proposal for Works,											
DWP9690 Acceptance of Factory Acceptance Tests of all equipment for Works								0	0	0%	30-Dec-20	30-Dec-20	612	◆ Acceptance of Factory Acceptance Tests of all equipment for Works,											
NE/2017/06-3.MD.1.14 CC K - Manual Fallback System - TKOLTT								83	83	0%	20-Oct-20	11-Jan-21	168												
DWP9620 Acceptance of Final System Proposal for Works								0	0	0%	20-Oct-20	11-Jan-21	251	◆ Acceptance of Final System Proposal for Works,											
DWP9630 Acceptance of Factory Acceptance Tests of all equipment for Works								0	0	0%	11-Jan-21	11-Jan-21	168	◆ Acceptance of Factory Acceptance Tests of all equipment for Works,											
NE/2017/06-3.MD.1.16 CC L - Operation Facilities - TKOLTT								45	45	0%	20-Oct-20	04-Dec-20	206												
DWP9740 Acceptance of Final System Proposal for Works								0	0	0%	20-Oct-20	04-Dec-20	251	◆ Acceptance of Final System Proposal for Works,											
DWP9750 Acceptance of Factory Acceptance Tests of all equipment for Works								0	0	0%	04-Dec-20	04-Dec-20	206	◆ Acceptance of Factory Acceptance Tests of all equipment for Works,											
NE/2017/06-3.MD.1.17 CC M - Power Distribution System - TKOLTT								71	71	0%	20-Oct-20	30-Dec-20	180												
DWP9800 Acceptance of Final System Proposal for Works								0	0	0%	20-Oct-20	30-Dec-20	251	◆ Acceptance of Final System Proposal for Works,											
DWP9810 Acceptance of Factory Acceptance Tests of all equipment for Works								0	0	0%	30-Dec-20	30-Dec-20	180	◆ Acceptance of Factory Acceptance Tests of all equipment for Works,											
NE/2017/06-3.MD.1.18 CC M1 - Power Distribution System - CBL								71	71	0%	20-Oct-20	30-Dec-20	612												
DWP9860 Acceptance of Final System Proposal for Works								0	0	0%	20-Oct-20	30-Dec-20	683	◆ Acceptance of Final System Proposal for Works,											
DWP9870 Acceptance of Factory Acceptance Tests of all equipment for Works								0	0	0%	30-Dec-20	30-Dec-20	612	◆ Acceptance of Factory Acceptance Tests of all equipment for Works,											
NE/2017/06-3.MD.1.19 CC N - Speed Enforcement System - TKOLTT								19	19	0%	20-Oct-20	07-Nov-20	232												
DWP9910 Acceptance of Preliminary System Proposal for Works								0	0	0%	20-Oct-20	07-Nov-20	251	◆ Acceptance of Preliminary System Proposal for Works,											
DWP9920 Acceptance of Final System Proposal for Works								0	0	0%	20-Oct-20	07-Nov-20	251	◆ Acceptance of Final System Proposal for Works,											
DWP9930 Acceptance of Factory Acceptance Tests of all equipment for Works								0	0	0%	07-Nov-20	07-Nov-20	232	◆ Acceptance of Factory Acceptance Tests of all equipment for Works,											
NE/2017/06-3.MD.1.20 CC N1 - Speed Enforcement System - CBL								19	19	0%	20-Oct-20	07-Nov-20	664												
DWP10390 Acceptance of Preliminary System Proposal for Works								0	0	0%	20-Oct-20	07-Nov-20	683	◆ Acceptance of Preliminary System Proposal for Works,											
DWP10400 Acceptance of Final System Proposal for Works								0	0	0%	20-Oct-20	07-Nov-20	683	◆ Acceptance of Final System Proposal for Works,											
DWP10410 Acceptance of Factory Acceptance Tests of all equipment for Works								0	0	0%	07-Nov-20	07-Nov-20	664	◆ Acceptance of Factory Acceptance Tests of all equipment for Works,											
NE/2017/06-3.MD.1.21 CC O - Government Optical Fibre System - TKOLTT								44	44	0%	20-Oct-20	03-Dec-20	207												
DWP10040 Acceptance of Final System Proposal for Works								0	0	0%	20-Oct-20	03-Dec-20	251	◆ Acceptance of Final System Proposal for Works,											
DWP10050 Acceptance of Factory Acceptance Tests of all equipment for Works								0	0	0%	03-Dec-20	03-Dec-20	207	◆ Acceptance of Factory Acceptance Tests of all equipment for Works,											
NE/2017/06-3.MD.1.22 CC O1 - Government Optical Fibre System - CBL								44	44	0%	20-Oct-20	03-Dec-20	639												
DWP10100 Acceptance of Final System Proposal for Works								0	0	0%	20-Oct-20	03-Dec-20	683	◆ Acceptance of Final System Proposal for Works,											
DWP10110 Acceptance of Factory Acceptance Tests of all equipment for Works								0	0	0%	03-Dec-20	03-Dec-20	639	◆ Acceptance of Factory Acceptance Tests of all equipment for Works,											

Table with columns: Activity ID, Activity Name, Original Duration, Remaining Duration, Schedule % Complete, Start, Finish, Total Float, and a Gantt chart grid for months from Sep to Apr. Activities include CC P - Training and Documentation, CC Q - Comprehensive Maintenance Services, NE/2017/06-3.1 Preliminary, NE/2017/06-3.DS Design Stage, and NE/2017/06-3.DS.SCT Preparation / Submission of SCT Procedures.

Legend for Gantt chart: Actual Level of Effort (blue bar), Actual Work (green bar), Remaining Work (light green bar), Critical Remaining Work (red bar), Milestone (diamond symbol).

Activity ID	Activity Name	Original Duration	Remaining Duration	Schedule % Complete	Start	Finish	Total Float	Classic Schedule Layout											
								Sep	Oct	Nov	Dec	Jan	Feb	Mar	Apr				
NE/2017/06-3.CST.S1A1B.1B.9	Installation of Enforcement Equipment	0	0	0%			0												
NE/2017/06-3.CST.S1A1B.1B.10	Installation of Control Cabinet	0	0	0%			0												
NE/2017/06-3.CST.S1A1B.1B.11	Local Cables Installation, Testing and Termination	0	0	0%			0												
NE/2017/06-3.CST.S1A1B.1B.12	Site Commissioning Test of TCD and fibre Cable	0	0	0%			0												
NE/2017/06-3.CST.S1A1B.1C	Stage 1C Works (EVB and WVB within Portion 1C)	0	0	0%	30-Jan-21	30-Jan-21	14												
DWP4840	Portion 1CAccess Date	0	0	0%	30-Jan-21	30-Jan-21	20												
NE/2017/06-3.CST.S1A1B.1C.5	Site Commissioning Test of Fibre Cable	0	0	0%			0												
NE/2017/06-3.CST.S1A1B.1C.2	West Ventilation Building	0	0	0%			0												
NE/2017/06-3.CST.S1A1B.1C.1	Sub-systems Site Commissioning Test	0	0	0%			0												
NE/2017/06-3.CST.S1A1B.1C.3	East Ventilation Building	0	0	0%			0												
NE/2017/06-3.CST.S1A1B.1C.4	Sub-systems Site Commissioning Test-1	0	0	0%			0												
NE/2017/06-3.CST.S1A1B.2A	Stage 2A Works (Within Portion 2A)	0	0	0%			0												
NE/2017/06-3.CST.S1A1B.2B	Stage 2B Works (Within Portion 2B)	0	0	0%			0												
NE/2017/06-3.CST.S1A1B.3	Stage 3 Works (Within Portion 3A)	1	1	0%	19-Dec-20	20-Dec-20	906												
DWP5440	Handover of Holding-down Bolts for Pole Foundation to Civil	1	1	0%	19-Dec-20	20-Dec-20	1079												
NE/2017/06-3.CST.S1A1B.3.1	Laying Cables (fibre, signal and power)	0	0	0%			0												
NE/2017/06-3.CST.S1A1B.3.1.1	Installation of Cable Containment	0	0	0%			0												
NE/2017/06-3.CST.S1A1B.3.1.2	Laying Cables	0	0	0%			0												
NE/2017/06-3.CST.S1A1B.3.2	Installation of Traffic Control Field Equipment	0	0	0%			0												
NE/2017/06-3.CST.S1A1B.3.3	Installation of CCTV	0	0	0%			0												
NE/2017/06-3.CST.S1A1B.3.5	Installation of Control Cabinet	0	0	0%			0												
NE/2017/06-3.CST.S1A1B.3.6	Local Cables Installation, Testing and Termination	0	0	0%			0												
NE/2017/06-3.CST.S1A1B.3.7	Site Commissioning Test of TCD and Fibre Cable	0	0	0%			0												
NE/2017/06-3.CST.S1A1B.4A	Stage 4A Works (Bridges within Portion 4A)	0	0	0%			0												
NE/2017/06-3.CST.S1A1B.4B	Stage 4B Works (Bridges within Portion 4B)	0	0	0%			0												
NE/2017/06-3.SATT	SAT for TKO-LTT TCSS	0	0	0%			0												
NE/2017/06-3.OPTT	Operability Period Test for the TKO-LTT TCSS	0	0	0%			0												
NE/2017/06-3.DLPT	DLP for the TKO-LTT TCSS	0	0	0%			0												
NE/2017/06-3.DOC1	Documentation Submission for TKO-LTT TCSS	0	0	0%			0												
NE/2017/06-3.TRT	Training for TKO-LTT TCSS	0	0	0%			0												
NE/2017/06-3.EMC	Equipment Manufacturing and Delivery for CBL TCSS	0	0	0%			0												
NE/2017/06-3.CSC1	Construction Stage for CBL TCSS	0	0	0%			0												
NE/2017/06-3.SATC	SAT for CBL TCSS	0	0	0%			0												
NE/2017/06-3.OPTC	Operability Period Test For the CBL TCSS	0	0	0%			0												
NE/2017/06-3.DLPC	DLP for the CBL TCSS	0	0	0%			0												
NE/2017/06-3.DOC	Documentation Submission for CBL TCSS	0	0	0%			0												
NE/2017/06-3.TRC	Training for CBL TCSS	0	0	0%			0												

Activity ID	Activity Name	Original Duration	Start	Finish	2020			
					Jul	Aug	Sep	Oct
Tseung Kwan O Interchange and Associated Works 202011_20201109 (002)								
Contract Key Date & Milestone								
Contract Key Date								
CD-10080	KD1 - Bridge ML for TCSS (23 Sep 20) -> (27 Oct 20)	0		08-Nov-20*				
CD-10090	KD2 - Bridge S300, Pier 2J and 1K (23 Oct 20) -> (18 Nov 20)	0		18-Nov-20*				
CD-10100	KD3 - TCSS work (except S200) (22 Dec 20) -> (21 Jan 21)	0		21-Jan-21*				
Contractor's Target Key Date								
Sloping Seawall Structure								
CD-10170	Acceptance of Reinstatement of all Seawall coping wall and associated work by Others' contract	0	08-Nov-20	08-Nov-20				
Major Safety/ Environment Element								
Independent Safety Audit								
CD-10440	Completion of 5th Independent Safety Audit (22 Jul 20)	0		08-Nov-20*				
CD-10450	Completion of 6th Independent Safety Audit (22 Jan 21)	0		22-Jan-21*				
Safety Bulletin Board								
CD-10462	Completion of 3rd Safety Bulletin Board (22 Jan 21)	0	22-Jan-21	22-Jan-21*				
Miscellaneous Work								
Video Film								
CD-10472	Project Manager Review and Contractor Revision on Script of Construction Video Film for Release I	51	21-Mar-20 A	28-Nov-20				
CD-10482	Project Manager Review and Contractor Revision on Script of Construction Video Film for Release II	51	21-Mar-20 A	28-Nov-20				
CD-10474	Project Manager Review and Contractor Revision on Video of Construction Video Film for Release I	51	17-Jun-20 A	19-Dec-20				
CD-10484	Project Manager Review and Contractor Revision on Video of Construction Video Film for Release II	51	11-Jul-20 A	19-Dec-20				
CD-10492	Project Manager Review and Contractor Revision on Script of Construction Video Film for Release III	51	08-Nov-20*	28-Dec-20				
CD-10475	Final Video Preparation and Submission with Voice Over of Construction Video Film for Release I	30	20-Dec-20	18-Jan-21				
CD-10485	Final Video Preparation and Submission with Voice Over of Construction Video Film for Release II	30	20-Dec-20	18-Jan-21				
CD-10493	Video Preparation and Submission of Construction Video Film for Release III	30	29-Dec-20	27-Jan-21				
CD-10470	Completion of Construction Video Film for Release I (17 Apr 19)	0		18-Jan-21				
CD-10480	Completion of Construction Video Film for Release II (16 Apr 20)	0		18-Jan-21				
CD-10494	Project Manager Review and Contractor Revision on Video of Construction Video Film for Release III	51	28-Jan-21	19-Mar-21				
Major Construction Work								
Bridge ML								
CD-10540	Completion of Pier Head Segment Diaphragm Bridge ML	0	28-Nov-20	28-Nov-20				
Bridge S300								
CD-10600	Completion of Bored Pile (Construction) Bridge S300	0	21-Nov-20	21-Nov-20				
Bridge S200								
CD-10690	Completion of Bored Pile (Construction) Bridge S200	0	14-Nov-20	14-Nov-20				
Bridge S100								
CD-10780	Completion of Bored Pile (Construction) Bridge S100	0	13-Nov-20	13-Nov-20				
CD-10790	Completion of Pile Cap Bridge S100	0		23-Feb-21				
Preliminary & Pre-Construction Work								
Initial Document Submission								
BIM & Simulation of Construction Method								
Construction Method Simulation (CMS)								
PRE-10810	Prepare and Submit the Construction Method Simulation - Span Segment Erection	120	10-Jul-19 A	21-Nov-20				
Pre-Construction Work								
Survey								
Conditional Survey (Documentation)								
PRE-11935	Prepare and Submit Report for Condition Survey (Portion IV)	3	15-Sep-20 A	21-Nov-20				
PRE-11936	Project Manager to acknowledge the Report Submission of Condition Survey (Portion IV)	3	22-Nov-20	24-Nov-20				
Initial Survey (Documentation)								
PRE-11955	Prepare and Submit Report for Initial Survey (Portion IV)	3	15-Sep-20 A	21-Nov-20				
PRE-11956	Project Manager to acknowledge the Report Submission of Initial Survey (Portion IV)	3	22-Nov-20	24-Nov-20				
Document Submission (Design, Drawing, Method Statement, Application etc)								
Major Method Statement								
Construction of Parapet & Installation of Utility Through								
PRE-14250	Contractor's Review with Project Manager, Revised Method Statement	21	07-Mar-20 A	28-Nov-20				
PRE-14270	ICE Certification & Submit Revised Method Statement for Parapet Construction & Installation of Utility Through	7	29-Nov-20	05-Dec-20				
PRE-14280	Project Manager to review and approve Method Statement Parapet Construction & Installation of Utility Through	21	06-Dec-20	26-Dec-20				
Installation of Bridge Furniture								
PRE-14290	Prepare 1st Submission of Method Statement Installation of Bridge Furniture	28	29-Nov-20	26-Dec-20				
PRE-14310	Contractor's Review with Project Manager, Revised Method Statement for Installation of Bridge Furniture	21	27-Dec-20	16-Jan-21				
PRE-14330	ICE Certification & Submit Revised Method Statement for Installation of Bridge Furniture	7	17-Jan-21	23-Jan-21				
PRE-14340	Project Manager to review and approve Method Statement Installation of Bridge Furniture	21	24-Jan-21	13-Feb-21				
Design Calculation/ Drawing of Temporary Work								
Design for Temp.work of Parapet Construction								
PRE-14640	Project Manager to review and approve the Design for Temp.work of Parapet Construction	21	23-Sep-20 A	13-Nov-20				
Pre-Fabrication Element								
Pre-Fabrication of Precast Segment								
FD-10510	Mould No. 1 Modification for Pier Head Segment 2J-2 (2J-U0, CBL Interfacing) Pre-Fabrication, Including Certification	30	02-Nov-20 A	01-Dec-20				
FD-10199	Pre-Fabrication for Segment (Batch 9) - 492 to 545 nos. Pier Head/ Span/ Key Segment	30	07-Nov-20 A	30-Nov-20				
FD-10200	Pre-Fabrication for Segment (Batch 10) - 546 to 577 nos. Pier Head/ Span/ Key Segment	22	01-Dec-20	22-Dec-20				
Pre-Fabrication of Parapet Skin								
FD-10260	Pre-Fabrication for Parapet Skin for Bridge ML (402m Length x 2 Sides) - 6 Sets Mould	67	10-Sep-20 A	16-Dec-20				
FD-10270	Pre-Fabrication for Parapet Skin for Bridge S300 (413m Length x 2 Sides) - 6 Sets Mould	74	17-Dec-20	28-Feb-21				
Construction Work								
Pre-Drilling & Piling Work								
Bored Pile Include Fabrication & Delivery of Pile Cage and Casing								
Bridge S300								
		30	30-Oct-20 A	21-Nov-20				

Works
 Critical Works
 Actual

Activity ID	Activity Name	Original Duration	Start	Finish	2020			
					Jul	Aug	Sep	Oct
CON-10800	Bored Pile 4J-P1 Including Plant Mobilisation and Demobilisation (1 no. Pile/ Team A)	30	30-Oct-20 A	21-Nov-20				
Bridge S200		30	24-Oct-20 A	14-Nov-20				
CON-15980	Bored Pile 2C Including Plant Mobilisation and Demobilisation (1 no. Pile 2C-P1/Team B)	30	24-Oct-20 A	14-Nov-20				
Bridge S100		30	24-Oct-20 A	13-Nov-20				
CON-16000	Bored Pile 3D Including Plant Mobilisation and Demobilisation (1 no. Pile 3D-P2/ Team C)	30	24-Oct-20 A	13-Nov-20				
Curing and Bored Pile Test (Sonic + Interface Core/Full Core)								
Bridge S300		23	30-Jul-20 A	18-Dec-20				
CON-11100	Curing and Bored Pile Test (Sonic + Full Core/Interface Core) 4J Including Plant Mobilisation and Demobilisation	23	30-Jul-20 A	18-Dec-20				
Bridge S200		23	16-Nov-20	11-Dec-20				
CON-15990	Curing and Bored Pile Test (Sonic + Full Core/Interface Core) 2C-P1 Including Plant Mobilisation and Demobilisation	23	16-Nov-20	11-Dec-20				
Bridge S100		23	14-Nov-20	10-Dec-20				
CON-16010	Curing and Bored Pile Test (Sonic + Full Core/Interface Core) 3D-P2 Including Plant Mobilisation and Demobilisation	23	14-Nov-20	10-Dec-20				
Removal of Temp. Working platform								
Bridge S300		5	19-Dec-20	24-Dec-20				
CON-11380	Removal of Temporary Platform Erection for Pier 4J (Team A)	5	19-Dec-20	24-Dec-20				
Bridge S200		5	12-Dec-20	17-Dec-20				
CON-11470	Removal of Temporary Platform Erection for Pier 2C (Team B)	5	12-Dec-20	17-Dec-20				
Bridge S100		5	11-Dec-20	16-Dec-20				
CON-11500	Removal of Temporary Platform Erection for Pier 3D (Team C)	5	11-Dec-20	16-Dec-20				
Pile Cap Construction								
Preparation Work for the Installation of Precast Shell								
Bridge S300		14	17-Dec-20	05-Jan-21				
CON-15820	Preparation work Installation of Precast Shell for Pier 4J	7	28-Dec-20	05-Jan-21				
Bridge S200		7	18-Dec-20	28-Dec-20				
CON-15850	Preparation work Installation of Precast Shell for Pier 2C	7	18-Dec-20	28-Dec-20				
Bridge S100		7	17-Dec-20	24-Dec-20				
CON-15940	Preparation work Installation of Precast Shell for Pier 3D	7	17-Dec-20	24-Dec-20				
Installation of Precast Shell and Sealing								
Bridge S300		21	28-Dec-20	21-Jan-21				
CON-11680	Install Precast Shell and Sealing for Pier 4J (1 nos. Shell / Team G)	14	06-Jan-21	21-Jan-21				
Bridge S200		14	29-Dec-20	14-Jan-21				
CON-11770	Install Precast Shell and Sealing for Pier 2C (1 nos. Shell / Team H)	14	29-Dec-20	14-Jan-21				
Bridge S100		14	28-Dec-20	13-Jan-21				
CON-11800	Install Precast Shell and Sealing for Pier 3D (1 nos. Shell / Team J)	14	28-Dec-20	13-Jan-21				
Trimming of Bored Pile Head								
Bridge S300		18	14-Jan-21	03-Feb-21				
CON-11980	Trimming Bored Pile 4J (Team F)	11	22-Jan-21	03-Feb-21				
Bridge S200		11	15-Jan-21	27-Jan-21				
CON-12070	Trimming Bored Pile 2C (Team E)	11	15-Jan-21	27-Jan-21				
Bridge S100		11	14-Jan-21	26-Jan-21				
CON-12100	Trimming Bored Pile 3D (Team D)	11	14-Jan-21	26-Jan-21				
Pile Cap Rebar Erection, Concreting and Curing								
Bridge S300		93	21-Oct-20 A	10-Mar-21				
CON-12280	Pile Cap Rebar Erection, Concreting and Curing for Pier 4J (1 nos.Pile Cap/ Team 4r)	21	04-Feb-21	03-Mar-21				
Bridge S200		33	28-Jan-21	10-Mar-21				
CON-12310	Pile Cap Rebar Erection, Concreting and Curing for Pier 2C (1 nos.Pile Cap/ Team 1r)	33	28-Jan-21	10-Mar-21				
Bridge S100		80	21-Oct-20 A	23-Feb-21				
CON-12410	Pile Cap Rebar Erection, Concreting and Curing for Pier 3E (1 nos.Pile Cap/ Team 2r)	21	21-Oct-20 A	09-Nov-20				
CON-12400	Pile Cap Rebar Erection, Concreting and Curing for Pier 3D (1 nos.Pile Cap/ Team 3r)	21	27-Jan-21	23-Feb-21				
Construction Pier Element								
Construction of Pier								
Bridge S300		94	02-Nov-20 A	04-Mar-21				
CON-12571	Construction of Pier 4K, type 1 (1 Pour) Falsework, Formwork and Concreting (1 no.Pier/ Team 2c)	9	02-Nov-20 A	09-Nov-20				
Bridge S200		38	09-Nov-20	22-Dec-20				
CON-12640	Construction of Pier 2B, type 1 (3 Pours) Erection of Platform & Rebar (1 no.Pier/ Team 4r) - 1st Pour	8	09-Nov-20	17-Nov-20				
CON-12642	Construction of Pier 2B, type 1 (3 Pours) Falsework, Formwork and Concreting (1 no.Pier/ Team 4c) - 1st Pour	4	18-Nov-20	21-Nov-20				
CON-12643	Construction of Pier 2B, type 1 (3 Pours) Erection of Platform & Rebar (1 no.Pier/ Team 4r) - 2nd Pour	8	23-Nov-20	01-Dec-20				
CON-12644	Construction of Pier 2B, type 1 (3 Pours) Falsework, Formwork and Concreting (1 no.Pier/ Team 4c)- 2nd Pour	4	02-Dec-20	05-Dec-20				
CON-12645	Construction of Pier 2B, type 1 (3 Pours) Erection of Platform & Rebar (1 no.Pier/ Team 4r) - 3rd Pour	10	07-Dec-20	17-Dec-20				
CON-12646	Construction of Pier 2B, type 1 (3 Pours) Falsework, Formwork and Concreting (1 no.Pier/ Team 4c)- 3rd Pour	4	18-Dec-20	22-Dec-20				
Bridge S100		94	09-Nov-20	04-Mar-21				
CON-12690	Construction of Pier 3E, type 1 (2 Pours) Erection of Platform & Rebar (1 no.Pier/ Team 2r) - 1st Pour	8	09-Nov-20	17-Nov-20				
CON-12691	Construction of Pier 3E, type 1 (2 Pours) Falsework, Formwork and Concreting (1 no.Pier/ Team 2c) - 1st Pour	4	18-Nov-20	21-Nov-20				
CON-12692	Construction of Pier 3E, type 1 (2 Pours) Erection of Platform & Rebar (1 no.Pier/ Team 2r) - 2nd Pour	10	23-Nov-20	03-Dec-20				
CON-12693	Construction of Pier 3E, type 1 (2 Pours) Falsework, Formwork and Concreting (1 no.Pier/ Team 2c)- 2nd Pour	4	04-Dec-20	08-Dec-20				
CON-12680	Construction of Pier 3D, type 1 (2 Pours) Erection of Platform & Rebar (1 no.Pier/ Team 3r) - 1st Pour	8	24-Feb-21	04-Mar-21				
Concrete Curing and Removal of Temp. Work								
Bridge S300		44	09-Nov-20	31-Dec-20				
CON-12850	Concrete Curing and Removal Temp. Work of Pier 4K (Team L)	6	09-Nov-20	14-Nov-20				
Bridge S200		6	23-Dec-20	31-Dec-20				
CON-12920	Concrete Curing and Removal Temp. Work of Pier 2B (Team L)	6	23-Dec-20	31-Dec-20				
Bridge S100		6	09-Dec-20	15-Dec-20				
CON-12970	Concrete Curing and Removal Temp. Work of Pier 3E (Team L)	6	09-Dec-20	15-Dec-20				
Bearing Installation								
Bridge ML		14	09-Nov-20	24-Nov-20				
CON-13041	Bearing Installation Pier 1KS	2	09-Nov-20*	10-Nov-20				
Bridge S300		2	23-Nov-20	24-Nov-20				
CON-13150	Bearing Installation Pier 4L (Portion IV)	2	23-Nov-20	24-Nov-20				

Works Critical Works Actual

Activity ID	Activity Name	Original Duration	Start	Finish	2020			
					Jul	Aug	Sep	Oct
Bridge S200		2	23-Nov-20	24-Nov-20				
CON-13240	Bearing Installation Pier 2A(Portion IV)	2	23-Nov-20	24-Nov-20				
Bridge S100		2	23-Nov-20	24-Nov-20				
CON-13300	Bearing Installation Pier 3F (Portion IV)	2	23-Nov-20	24-Nov-20				
Construction of Pier Head Segment Diaphragm		78	19-Oct-20 A	10-Feb-21				
Installation of Pier Head Segment & Temporary Works		49	09-Nov-20	07-Jan-21				
Bridge ML		4	19-Nov-20	23-Nov-20				
CON-13430	Installation Pier Head Segment 1KS (1 no. Pier Head Segment) (Team Z)	4	19-Nov-20	23-Nov-20				
Bridge S300		43	09-Nov-20	30-Dec-20				
CON-13500	Installation Pier Head Segment 4H (1 no. Pier Head Segment) (Team Z)	2	09-Nov-20	10-Nov-20				
CON-13540	Installation Pier Head Segment 4K (1 no. Pier Head Segment) (Team Z)	5	30-Nov-20	04-Dec-20				
CON-13550	Installation Pier Head Segment 4L (Precast Diaphragm) (1 no. Pier Head Segment) (Team Z)	2	29-Dec-20	30-Dec-20				
Bridge S200		47	11-Nov-20	07-Jan-21				
CON-13610	Installation Pier Head Segment 2D (1 no. Pier Head Segment) (Team Z)	2	11-Nov-20	12-Nov-20				
CON-13560	Installation Pier Head Segment 2F (2 no. Pier Head Segment) (Team Z)	5	13-Nov-20	18-Nov-20				
CON-13600	Installation Pier Head Segment 2J-1 (1 no. Pier Head Segment) (Team Z)	5	24-Nov-20	28-Nov-20				
CON-16020	Installation Pier Head Segment 2J-2 (CBL Interfacing) (1 no. Pier Head Segment) (Team Z)	5	05-Dec-20	10-Dec-20				
CON-13640	Installation Pier Head Segment 2A (Precast Diaphragm) (1 no. Pier Head Segment) (Team Z)	2	24-Dec-20	28-Dec-20				
CON-13620	Installation Pier Head Segment 2B (1 no. Pier Head Segment) (Team Z)	5	02-Jan-21	07-Jan-21				
Bridge S100		7	16-Dec-20	23-Dec-20				
CON-13690	Installation Pier Head Segment 3E (1 no. Pier Head Segment) (Team Z)	5	16-Dec-20	21-Dec-20				
CON-13700	Installation Pier Head Segment 3F (Precast Diaphragm) (1 no. Pier Head Segment) (Team Z)	2	22-Dec-20	23-Dec-20				
Construction Cast-in-situ Diaphragm		68	19-Oct-20 A	29-Jan-21				
Bridge ML		30	19-Oct-20 A	28-Nov-20				
CON-13720	Alignment, Tie Beam and Miscellaneous Work Pier Head Segment Diaphragm 1DS (Precast Diaphragm) (2 no. Pier Head Segment)	30	19-Oct-20 A	23-Nov-20				
CON-13830	Alignment and Miscellaneous Work Pier Head Segment Diaphragm 1KN (Precast Diaphragm) (1 no. Pier Head Segment)	5	09-Nov-20	13-Nov-20				
CON-13840	Alignment and Miscellaneous Work Pier Head Segment Diaphragm 1KS (Precast Diaphragm) (1 no. Pier Head Segment)	5	24-Nov-20	28-Nov-20				
Bridge S300		46	11-Nov-20	06-Jan-21				
CON-13920	Rebar, Formwork/Falsework & Concreting for Pier Head Segment Diaphragm 4H (1 no. Pier Head Segment/ Team 3c/ Team 3r)	15	11-Nov-20	27-Nov-20				
CON-13940	Rebar, Formwork/Falsework & Concreting for Pier Head Segment Diaphragm 4K (1 no. Pier Head Segment/ Team 2c/ Team 2r)	15	09-Dec-20	28-Dec-20				
CON-13950	Alignment and Miscellaneous Work Pier Head Segment Diaphragm 4L (Precast Diaphragm) (1 no. Pier Head Segment/ Team 1)	5	31-Dec-20	06-Jan-21				
Bridge S200		60	13-Nov-20	25-Jan-21				
CON-13990	Rebar, Formwork/Falsework & Concreting for Pier Head Segment Diaphragm 2D (1 no. Pier Head Segment/ Team 1c/ Team 1r)	15	13-Nov-20	30-Nov-20				
CON-14000	Rebar, Formwork/Falsework & Concreting for Pier Head Segment Diaphragm 2E (1 no. Pier Head Segment/ Team 3c/ Team 3r)	15	28-Nov-20	15-Dec-20				
CON-14010	Rebar, Formwork/Falsework & Concreting for Pier Head Segment Diaphragm 2F (2 no. Pier Head Segment/ Team 1c/ Team 1r)	30	01-Dec-20	07-Jan-21				
CON-14020	Rebar, Formwork/Falsework & Concreting for Pier Head Segment Diaphragm 2G (1 no. Pier Head Segment/ Team 3c/ Team 3r)	15	16-Dec-20	05-Jan-21				
CON-14030	Rebar, Formwork/Falsework & Concreting for Pier Head Segment Diaphragm 2H (1 no. Pier Head Segment/ Team 4c/ Team 4r)	15	23-Dec-20	12-Jan-21				
CON-13960	Alignment and Miscellaneous Work Pier Head Segment Diaphragm 2A (Precast Diaphragm) (1 no. Pier Head Segment)	5	29-Dec-20	04-Jan-21				
CON-14040	Rebar, Formwork/Falsework & Concreting for Pier Head Segment Diaphragm 2J -1 (1 no. Pier Head Segment/ Team 2c/ Team 2r)	15	29-Dec-20	15-Jan-21				
CON-13970	Rebar, Formwork/Falsework & Concreting for Pier Head Segment Diaphragm 2B (1 no. Pier Head Segment/ Team 3c/ Team 3r)	15	08-Jan-21	25-Jan-21				
CON-14041	Rebar, Formwork/Falsework & Concreting for Pier Head Segment Diaphragm 2J-2 (1 nos. Pier Head Segment/ Team 1c/ Team 1r)	15	08-Jan-21	25-Jan-21				
Bridge S100		29	24-Dec-20	29-Jan-21				
CON-14100	Alignment and Miscellaneous Work Pier Head Segment Diaphragm 3F (Precast Diaphragm) (1 no. Pier Head Segment/ Team 4)	5	24-Dec-20	31-Dec-20				
CON-14090	Rebar, Formwork/Falsework & Concreting for Pier Head Segment Diaphragm 3E(1 no. Pier Head Segment/ Team 4c/ Team 4r)	15	13-Jan-21	29-Jan-21				
Concrete Curing and Formwork Removal		78	09-Nov-20	10-Feb-21				
Bridge S300		51	09-Nov-20	09-Jan-21				
CON-14320	Concrete Curing & Formwork Removal for Pier Head Segment Diaphragm 4F (1 no.) (Team U)	10	09-Nov-20	19-Nov-20				
CON-14300	Concrete Curing & Formwork Removal for Pier Head Segment Diaphragm 4G (1 no.) (Team U)	10	11-Nov-20	21-Nov-20				
CON-14310	Concrete Curing & Formwork Removal for Pier Head Segment Diaphragm 4H (1 no.) (Team U)	10	28-Nov-20	09-Dec-20				
CON-14340	Concrete Curing & Formwork Removal for Pier Head Segment Diaphragm 4K (1 no.) (Team U)	10	29-Dec-20	09-Jan-21				
Bridge S200		57	01-Dec-20	08-Feb-21				
CON-14400	Concrete Curing & Formwork Removal for Pier Head Segment Diaphragm 2D (1 no.) (Team U)	10	01-Dec-20	11-Dec-20				
CON-14360	Concrete Curing & Formwork Removal for Pier Head Segment Diaphragm 2E (1 no.) (Team U)	10	16-Dec-20	29-Dec-20				
CON-14370	Concrete Curing & Formwork Removal for Pier Head Segment Diaphragm 2G (1 no.) (Team U)	10	06-Jan-21	16-Jan-21				
CON-14390	Concrete Curing & Formwork Removal for Pier Head Segment Diaphragm 2F (2 nos.) (Team U)	10	08-Jan-21	19-Jan-21				
CON-14380	Concrete Curing & Formwork Removal for Pier Head Segment Diaphragm 2H (1 no.) (Team U)	10	13-Jan-21	23-Jan-21				
CON-14410	Concrete Curing & Formwork Removal for Pier Head Segment Diaphragm 2J-1 (1 no.) (Team U)	10	16-Jan-21	27-Jan-21				
CON-14420	Concrete Curing & Formwork Removal for Pier Head Segment Diaphragm 2B (1 no.) (Team U)	10	26-Jan-21	05-Feb-21				
CON-16030	Concrete Curing & Formwork Removal for Pier Head Segment Diaphragm 2J-2 (1 no.) (Team U)	10	28-Jan-21	08-Feb-21				
Bridge S100		10	30-Jan-21	10-Feb-21				
CON-14490	Concrete Curing & Formwork Removal for Pier Head Segment Diaphragm 3E (1 no.) (Team U)	10	30-Jan-21	10-Feb-21				
Span Segment Erection		126	05-Nov-20 A	15-Apr-21				
Span Segment Erection (Including Plant Mobilisation, Erection & removal of Temp. Work)		126	05-Nov-20 A	15-Apr-21				
Bridge ML		86	07-Nov-20 A	23-Feb-21				
Span Segment ML-2S(N)		60	09-Nov-20	20-Jan-21				
CON-14552	[LF-13] Erection of Span Segment@Bridge ML- 2S(N) - Span 1F-S(N) (4 nos./ 2 Pairs) (1F-S-D5L-D6L & U5L-U6L)	9	09-Nov-20	18-Nov-20				
CON-14573	[HB1-09] Erection of Span Segment@Bridge ML- 2S(N) - Span 1E-S(N) (4 nos./ 2 Pairs) (1E-S-D6L-D7L & U6L-U7L)	8	27-Nov-20	05-Dec-20				
CON-14580	[TB1-02] Erection of Span Segment@Bridge ML- 2S(N) - Span 1D-S(N) (6 nos. - TB)	30	14-Dec-20	20-Jan-21				
Span Segment ML-2S(S)		82	07-Nov-20 A	23-Feb-21				
CON-14601	[HB1-08] Erection of Span Segment@Bridge ML- 2S(S)- Span 1E-S(S) (10 nos./ 5 Pairs)	21	07-Nov-20 A	26-Nov-20				
CON-14590	[LF-14] Erection of Span Segment@Bridge ML- 2S(S) - Span 1F-S(S) (4 nos./ 2 Pairs) (1F-S-D5R-D6R & U5R-U6R)	9	19-Nov-20	28-Nov-20				
CON-14610	[TB1-03] Erection of Span Segment@Bridge ML- 2S(S) - Span 1D-S(S) (6 nos. - TB)	20	28-Jan-21	23-Feb-21				
Span Segment ML-3N		34	09-Nov-20	17-Dec-20				
CON-15970	[TB2-02] Erection of Span Segment@Bridge ML- 3N- Span 1J-N (2 nos..U - 2 nos. (1J-N-U8 & 1J-N-U9) - TB)	5	09-Nov-20	13-Nov-20				
CON-14640	[TB2-03] Erection of Span Segment@Bridge ML- 3N - Span 1K-N (9 nos. - TB)	29	14-Nov-20	17-Dec-20				
Span Segment ML-3S		44	28-Dec-20	20-Feb-21				

Works Critical Works Actual

Activity ID	Activity Name	Original Duration	Start	Finish	2020			
					Jul	Aug	Sep	Oct
CON-16070	[TB2-04] Erection of Span Segment@Bridge ML-3S - Span 1J-S (2 nos./ U - 2 nos. (1J-S-U8 & 1J-S-U9) - TB)	5	28-Dec-20	02-Jan-21				
CON-14690	[TB2-05] Erection of Span Segment@Bridge ML-3S - Span 1K-S (9 nos.- TB)	39	04-Jan-21	20-Feb-21				
Bridge S300		59	05-Nov-20 A	09-Feb-21				
Span Segment S300-1		30	05-Nov-20 A	11-Dec-20				
CON-14730	[HB2-07] Erection of Span Segment@Bridge S300-1 - Span 4C (14 nos./ 7 Pairs)	30	05-Nov-20 A	07-Dec-20				
CON-16060	[HB2-08] Erection of Span Segment@Bridge S300-1 - Span 4D (2 nos./ 1 Pair)	4	08-Dec-20	11-Dec-20				
Span Segment S300-2		53	07-Dec-20	09-Feb-21				
CON-14780	[HB1-10] Erection of Span Segment@Bridge S300-2 - Span 4F (12 nos./ 6 Pairs)	26	07-Dec-20	08-Jan-21				
CON-14760	[HB2-09] Erection of Span Segment@Bridge S300-2 - Span 4G (14 nos./ 7 Pairs)	30	12-Dec-20	19-Jan-21				
CON-14790	[HB1-11] Erection of Span Segment@Bridge S300-2 - Span 4K (12 nos./ 6 Pairs)	26	11-Jan-21	09-Feb-21				
Bridge S200		97	12-Dec-20	15-Apr-21				
Span Segment S200-1		55	12-Dec-20	20-Feb-21				
CON-14830	[LF-15] Erection of Span Segment@Bridge S200-1 - Span 2D (12 nos./ 6 Pairs)	26	12-Dec-20	14-Jan-21				
CON-14840	[HB2-10] Erection of Span Segment@Bridge S200-1 - Span 2E (12 nos./6 Pairs)	25	20-Jan-21	20-Feb-21				
Span Segment S200-2		49	10-Feb-21	15-Apr-21				
CON-14880	[HB1-16] Erection of Span Segment@Bridge S200-2 - Span 2G (6 nos./3 Pairs)	13	10-Feb-21	27-Feb-21				
CON-14890	[HB2-11] Erection of Span Segment@Bridge S200-2 - Span 2H (20 nos./10 Pairs)	42	22-Feb-21	15-Apr-21				
Key Segment Erection (Including Plant Setting of Segment Erector, Segment Erection and Stitch Joint)		92	09-Nov-20	02-Mar-21				
Bridge ML		83	19-Nov-20	02-Mar-21				
Bridge ML-2N, ML-3N		6	18-Dec-20	24-Dec-20				
CON-15030	[ML06] Stitching & Mid -Span Stressing @ML 1JN - 1KN (Stitching)	6	18-Dec-20	24-Dec-20				
Bridge ML-2S(N), ML-3S		81	19-Nov-20	27-Feb-21				
CON-15040	[ML07] Stitching & Mid -Span Stressing @ML 1FS(N)- 1GS (Stitching)	6	19-Nov-20	25-Nov-20				
CON-15050	[ML08] Stitching & Mid -Span Stressing @ML 1GS - 1HS (Stitching)	6	26-Nov-20	02-Dec-20				
CON-15070	[ML10] Erect Key Segment,Stitching & Mid -Span Stressing @ML 1ES(N)- 1FS(N) (1 no.- Key Segment) [KB2-03]	6	07-Dec-20	12-Dec-20				
CON-15060	[ML09] Stitching & Mid -Span Stressing @ML 1HS - 1JS (Stitching)	6	04-Jan-21	09-Jan-21				
CON-15090	[ML12] Stitching & Mid -Span Stressing @ML 1DS(N) - 1ES(N) (Stitching)	6	21-Jan-21	27-Jan-21				
CON-15080	[ML11] Stitching & Mid -Span Stressing @ML 1JS - 1KS (Stitching)	6	22-Feb-21	27-Feb-21				
Bridge ML-2S(S)		74	30-Nov-20	02-Mar-21				
CON-15100	[ML13] Erect Key Segment,Stitching & Mid -Span Stressing @ML 1FS(S) - 4A (1 no.- Key Segment) [KB2-07]	7	30-Nov-20	07-Dec-20				
CON-15110	[ML14] Erect Key Segment,Stitching & Mid -Span Stressing @ML 1ES(S)- 1FS(S) (1 no.- Key Segment) [KB2-08]	7	08-Dec-20	15-Dec-20				
CON-15120	[ML15] Stitching & Mid -Span Stressing @ML 1DS(S) - 1ES(S) (Stitching)	6	24-Feb-21	02-Mar-21				
Bridge S300		65	09-Nov-20	26-Jan-21				
CON-15160	[S300-04] Erect Key Segment,Stitching & Mid -Span Stressing @S300 4A- 4B (1 no.- Key Segment) [KB2-04]	6	09-Nov-20	14-Nov-20				
CON-15150	[S300-03] Erect Key Segment,Stitching & Mid -Span Stressing @S300 4B - 4C (1 no.- Key Segment) [KB2-05]	6	08-Dec-20	14-Dec-20				
CON-15140	[S300-02] Erect Key Segment,Stitching & Mid -Span Stressing @S300 4C - 4D (1 no.- Key Segment) [KB2-06]	6	15-Dec-20	21-Dec-20				
CON-15130	[S300-01] Erect Key Segment,Stitching & Mid -Span Stressing @S300 4D - 4E (1 no.- Key Segment) [KB2-02]	6	22-Dec-20	30-Dec-20				
CON-15170	[S300-05] Erect Key Segment,Stitching & Mid -Span Stressing @S300 4E - 4F (1 no.- Key Segment) [KB2-11]	6	09-Jan-21	15-Jan-21				
CON-15180	[S300-06] Erect Key Segment,Stitching & Mid -Span Stressing @S300 4F - 4G (1 no.- Key Segment) [KB2-12]	6	20-Jan-21	26-Jan-21				