



Lam Geotechnics Limited

Ground Investigation & Instrumentation Professionals

華益土力有限公司

Ref : G1938/CS/L349/AECOM
Date : 21 July 2021

(By Hand)

**Principal Resident Engineer Office
AECOM Asia Company Limited
9 Performing Art Avenue,
Admiralty, Hong Kong**

Attn: PRE, Mr. David Kwan

Dear Mr. Kwan,

**Contract No. HY/2019/18
Wanchai Development Phase II and Central-Wan Chai Bypass
Sampling, Field Measurement and Testing Works (Stage 4)**

As-built Drawings of the Landscape and Visual Mitigation Measures for Contract HY/2010/08

Referring to the captioned submission received through email on 20 July 2021, we have reviewed your submitted details and hereby certified this submission in accordance with Condition 2.10 of EP-482/2013/C.

Should you have any enquiry, please feel free to contact the undersigned at 2839 5666.

Yours faithfully,
For and On Behalf of Lam Geotechnics Limited

Raymond Dai
Environmental Team Leader

c.c.

| | | |
|---------|-------------------|---------------------|
| HyD | - Mr. Enoch Wong | (By Fax: 2714 5289) |
| AECOM | - Head office | (By Fax: 2142 5577) |
| RAMBOLL | - Mr. David Yeung | (By Fax: 3465 2899) |

21 July 2021

By Post and Fax (2691 2649)

AECOM Asia Company Limited
8/F., Grand Central Plaza, Tower 2
138 Shatin Rural Committee Road, Shatin
New Territories, Hong Kong

Attention: Mr. Conrad Ng

Dear Sir,

**Re: Contract No. HY/2010/08
Central – Wan Chai Bypass – Tunnel (Slip Road 8 Section)**

**As-built Drawings of Landscape and Visual Mitigation Measures under
Condition 2.10 of EP-482/2013/C**

Reference is made to the receipt of captioned submission from RSS via email dated 20 July 2021, and certified by the ET Leader (ET's ref.: "G1938/CS/L349/AECOM" dated 21 July 2021).

We are pleased to inform that we have no adverse comments on the captioned submission. We write to verify the captioned submission in accordance with Condition 2.10 of EP-482/2013/C.

Thank you very much for your kind attention and please do not hesitate to contact the undersigned should you have any queries.

Yours faithfully,
For and on behalf of
Ramboll Hong Kong Limited



David Yeung
Independent Environmental Checker

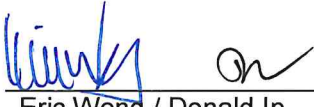
c.c.

| | | |
|-------|------------------------|---------------------|
| HyD | Attn.: Mr. Enoch Wong | (By Fax: 2714 5289) |
| AECOM | Attn.: Mr. Lydia Lee | (By Fax: 2142 5577) |
| Lam | Attn.: Mr. Raymond Dai | (By Fax: 2882 3331) |

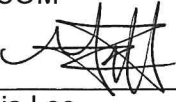
Central – Wan Chai Bypass
and Island Eastern Corridor Link

**As-built Drawings of the Landscape
and Visual Mitigation Measures for
Contract HY/2010/08**

(under Condition 2.10 of EP-482/2013/C)

Prepared by: 
Eric Wong / Donald Ip Date: 23 July 2021

Position: SRE (S&E) / RE (Env)
AECOM

Endorsed by: 
Lydia Lee Date: 23 July 2021

Position: Chief Resident Engineer
AECOM

Table of Content

| | | | |
|----|---|-------|---|
| 1. | As-built drawings of the landscape and visual mitigation measures for HY/2010/08 | | 1 |
| 2. | As-built drawings of the landscape and visual mitigation measures for other CWB contracts | | 1 |
| 3 | Long Term Landscape Monitoring | | 1 |

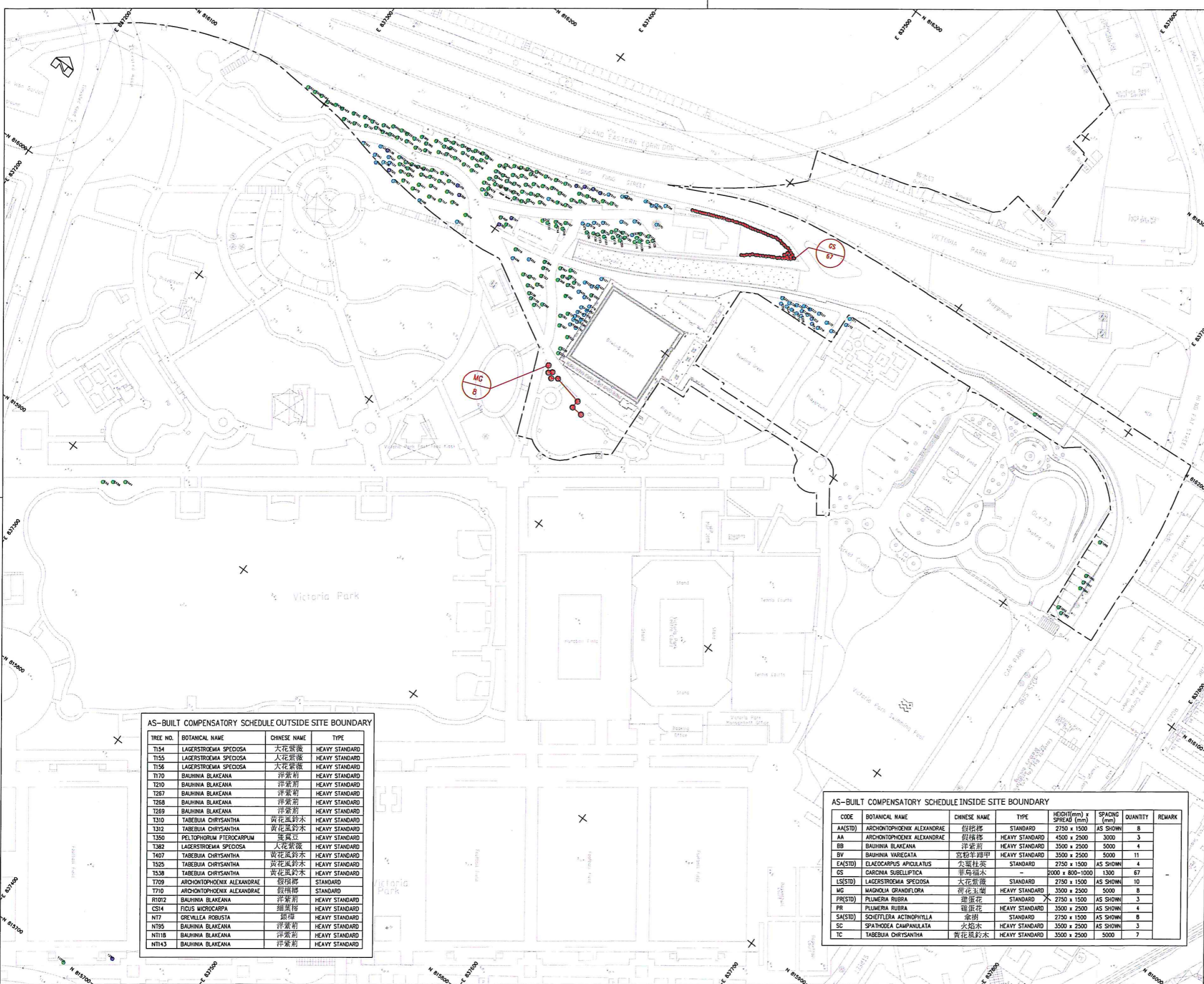
List of Figures

| | | | |
|----|---|-------|---|
| 1. | As-built drawings of the Tree Planting for Contract HY/2010/08 | | 2 |
| 2. | As-built drawings of the Shrub Planting for Contract HY/2010/08 | | 3 |

As-built Drawings of the Landscape and Visual Mitigation Measures

(CONDITION 2.10 OF OPERATION ENVIRONMENTAL PERMIT, EP-482/2013/C)

- 1. As-built drawings of the landscape and visual mitigation measures for HY/2010/08**
 - 1.1** The submission includes the as-built drawings of the landscape and visual mitigation measures for contract HY/2010/08, in which the landscape and visual mitigation measures were implemented and included in the Final Landscape Plan (Rev.5) submitted under Condition 2.14 of the FEP-10/364/2009/B and was approved by EPD on 9 March 2021.
- 2 As-built drawings of the landscape and visual mitigation measures for other CWB contracts**
 - 2.1** As for other CWB contract including HY/2009/19, the landscape works are underway and the as-built drawings of the landscape and visual mitigation measures for contracts HY/2009/19 will be submitted once available.
- 3 Long Term Landscape Monitoring**
 - 3.1** Under the updated EM&A Manual (Dec 2010) table 6.1, monitoring of the long-term management of the planting works shall be carried out in the period up to 5 years after completion of the construction works. The monitoring report shall be compiled by ET or Maintenance Agency and counter-sign by Management Agency or IEC.



- NOTES:
1. ALL LEVELS SHOWN ARE IN METRES REFER TO HONG KONG PRINCIPAL DATUM (HKMPD) UNLESS OTHERWISE STATED.
 2. GRID LINES ARE IN H.K. METRIC GRID 1980.
 3. DECIMAL POINT OF SPOT HEIGHT IS THE SURVEYED POSITION OF SURVEYED POINT.

- LEGEND :
- EP BOUNDARY
 - FINAL LOCATION OF TRANSPLANT TREES
 - COMPENSATORY TREES
 - COMPENSATORY RETAINED TREES
 - EXISTING TREES

路政署
Highways Department
主要工程管理處
Major Works Project Management Office

CENTRAL - WAN CHAI BYPASS - TUNNEL
(SLIP ROAD 8 SECTION)

TITLE AS-BUILT RECORD SURVEY PLAN
OF TREE PLANTING
AT VICTORIA PARK

中國建築工程(香港)有限公司
CHINA STATE CONSTRUCTION ENGINEERING (HONG KONG) LTD.

AECOM

DRG. NO. CDD SR08 1961C
圖紙編號

CONTRACT NO. HY/2010/08
合約編號

DATE OF ISSUE 19 Nov, 2020
發出日期

CHECKED BY SK Chow
覆核

DRAWN BY KC Chung
繪圖

SCALE 1:600
比例

STATUS RECORD
階段

DIMENSIONS ARE IN METRES
單位尺寸

PAPER SIZE A0
圖紙尺寸

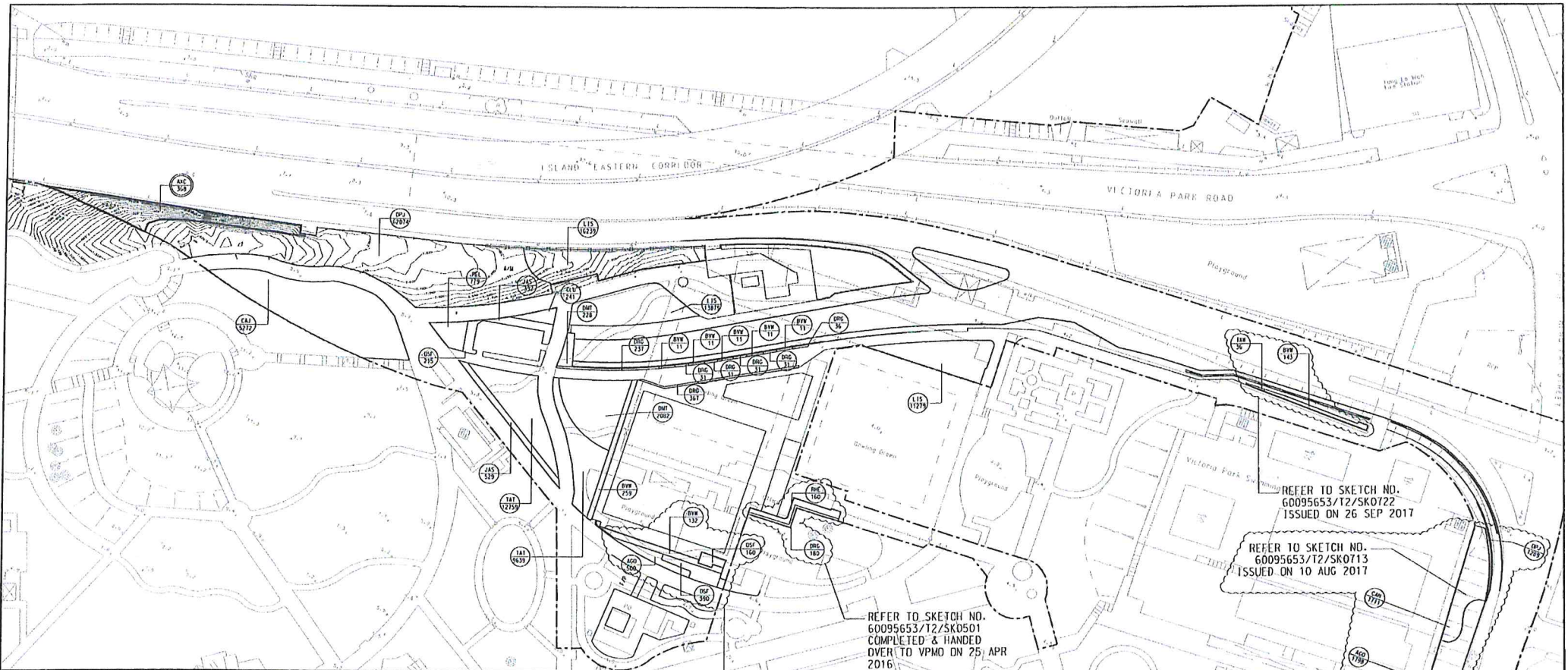
SHEET 1 OF 1
圖紙

AS-BUILT COMPENSATORY SCHEDULE OUTSIDE SITE BOUNDARY

| TREE NO. | BOTANICAL NAME | CHINESE NAME | TYPE |
|----------|----------------------------|--------------|----------------|
| T154 | LAGERSTROEMIA SPECIOSA | 大花紫微 | HEAVY STANDARD |
| T155 | LAGERSTROEMIA SPECIOSA | 大花紫微 | HEAVY STANDARD |
| T156 | LAGERSTROEMIA SPECIOSA | 大花紫微 | HEAVY STANDARD |
| T170 | BAUHINIA BLAKEANA | 洋紫荊 | HEAVY STANDARD |
| T210 | BAUHINIA BLAKEANA | 洋紫荊 | HEAVY STANDARD |
| T267 | BAUHINIA BLAKEANA | 洋紫荊 | HEAVY STANDARD |
| T268 | BAUHINIA BLAKEANA | 洋紫荊 | HEAVY STANDARD |
| T269 | BAUHINIA BLAKEANA | 洋紫荊 | HEAVY STANDARD |
| T310 | TABEBUIA CHRYSANTHA | 黃花風鈴木 | HEAVY STANDARD |
| T312 | TABEBUIA CHRYSANTHA | 黃花風鈴木 | HEAVY STANDARD |
| T350 | PELTOPHORUM PTEROCARPUM | 雙翼豆 | HEAVY STANDARD |
| T383 | LAGERSTROEMIA SPECIOSA | 大花紫微 | HEAVY STANDARD |
| T407 | TABEBUIA CHRYSANTHA | 黃花風鈴木 | HEAVY STANDARD |
| T525 | TABEBUIA CHRYSANTHA | 黃花風鈴木 | HEAVY STANDARD |
| T538 | TABEBUIA CHRYSANTHA | 黃花風鈴木 | HEAVY STANDARD |
| T709 | ARCHONTOPHOENIX ALEXANDRAE | 假棕櫚 | STANDARD |
| T710 | ARCHONTOPHOENIX ALEXANDRAE | 假棕櫚 | STANDARD |
| R1012 | BAUHINIA BLAKEANA | 洋紫荊 | HEAVY STANDARD |
| CS14 | FICUS MICROCARPA | 細葉榕 | HEAVY STANDARD |
| NT7 | GREVILLEA ROBUSTA | 銀樺 | HEAVY STANDARD |
| NT95 | BAUHINIA BLAKEANA | 洋紫荊 | HEAVY STANDARD |
| NT118 | BAUHINIA BLAKEANA | 洋紫荊 | HEAVY STANDARD |
| NT143 | BAUHINIA BLAKEANA | 洋紫荊 | HEAVY STANDARD |

AS-BUILT COMPENSATORY SCHEDULE INSIDE SITE BOUNDARY

| CODE | BOTANICAL NAME | CHINESE NAME | TYPE | HEIGHT (mm) ± SPREAD (mm) | SPACING (mm) | QUANTITY | REMARK |
|---------|----------------------------|--------------|----------------|---------------------------|--------------|----------|--------|
| AA(STD) | ARCHONTOPHOENIX ALEXANDRAE | 假棕櫚 | STANDARD | 2750 x 1500 | AS SHOWN | 8 | |
| AA | ARCHONTOPHOENIX ALEXANDRAE | 假棕櫚 | HEAVY STANDARD | 4500 x 2500 | 3000 | 3 | |
| BB | BAUHINIA BLAKEANA | 洋紫荊 | HEAVY STANDARD | 3500 x 2500 | 5000 | 4 | |
| BY | BAUHINIA VAREGATA | 宮粉羊蹄甲 | HEAVY STANDARD | 3500 x 2500 | 5000 | 11 | |
| EA(STD) | ELAEOCARPUS APICULATUS | 尖葉杜英 | STANDARD | 2750 x 1500 | AS SHOWN | 4 | |
| GS | GARCINIA SUBELLIPTICA | 華蓋木 | STANDARD | 2000 x 800-1000 | 1300 | 67 | |
| LS(STD) | LAGERSTROEMIA SPECIOSA | 大花紫微 | STANDARD | 2750 x 1500 | AS SHOWN | 10 | |
| MG | MAGNOLIA GRANDIFLORA | 荷花玉蘭 | HEAVY STANDARD | 3500 x 2500 | 5000 | 8 | |
| PR(STD) | PLUMERIA RUBRA | 雞蛋花 | STANDARD | 2750 x 1500 | AS SHOWN | 3 | |
| PR | PLUMERIA RUBRA | 雞蛋花 | HEAVY STANDARD | 3500 x 2500 | AS SHOWN | 4 | |
| SA(STD) | SCHEFFLERIA ACTINOPHYLLA | 傘樹 | STANDARD | 2750 x 1500 | AS SHOWN | 8 | |
| SC | SPATHODEA CAMPANULATA | 火焰木 | HEAVY STANDARD | 3500 x 2500 | AS SHOWN | 3 | |
| TC | TABEBUIA CHRYSANTHA | 黃花風鈴木 | HEAVY STANDARD | 3500 x 2500 | 5000 | 7 | |



| PLANTING SCHEDULE | | | | | | |
|----------------------|---------------------|--------------|--|--------------|----------------------------|------------------------|
| CODE | BOTANICAL NAME | CHINESE NAME | SPECIFICATION (mm) LENGTH L x WIDTH W | SPACING (mm) | QUANTITY (m ²) | COMMENT |
| TURF PLANTING | | | | | | |
| AXJ | AXEROPUS COMPRESSUS | 草皮 | 500H x 500W | N/A | 368 | AS PER GS CLAUSE 3-27. |

| CODE | BOTANICAL NAME | CHINESE NAME | SPECIFICATION (mm) HEIGHT H x SPREAD S | SPACING (mm) | NO./M ² | QUANTITY | COMMENT |
|-----------------------------|------------------------------------|--------------|---|--------------|--------------------|----------|--|
| SHRUB PLANTING | | | | | | | |
| AJZ | AGAVEA COCOTATA | 大花凤梨 | 500H x 500S | 400 | 1.25 | 2238 | PLANT ALL SPECIES IN A STAGGERED PATTERN |
| CAH | CALLIANDRA HEMIPHYLLA | 朱萼 | 500H x 500S | 400 | 1.25 | 1711 | |
| CAJ | CANELLA JAPONICA | 肉桂 | 500H x 500S | 400 | 1.25 | 5272 | |
| CLU | CLERODENDRON LISGANSUE | 紫萼 | 500H x 500S | 400 | 1.25 | 241 | |
| DMT | DICHAENA MANGIPIATA "BUTTERFLY" | 蝴蝶花 | 500H x 500S | 400 | 1.25 | 2310 | |
| DPG | DURANTA REPENS "GOLDEN " | 金锦木 | 400H x 400S | 300 | 12.54 | 944 | |
| LIX | LIXIA WILFABRII "SUNSHINE" | 太阳花 | 300H x 300S | 300 | 12.54 | 35 | |
| JAS | JASMINUM SAMBAK | 茉莉 | 500H x 500S | 400 | 1.25 | 881 | |
| DPJ | OSMANTHUS FRAGRANS | 桂花 | 500H x 500S | 400 | 1.25 | 765 | |
| PEL | PENTAS LANCEOLATA | 五瓣花 | 500H x 300S | 300 | 12.54 | 779 | |
| HAE | HAPPAE EXCELSA | 海欖 | 900H x 500S | 400 | 1.25 | 150 | |
| GROUNDCOVER PLANTING | | | | | | | |
| BAT | BACHLOPSERIS ASIATICUM "BUTTERFLY" | 蝴蝶花 | 100H x 200S | 150 | 44.44 | 22398 | |
| LIS | LIRIOPE SPICATA | 花叶玉簪 | 100H x 200S | 150 | 44.44 | 41397 | |
| DPJ | EPHEDRON JAPONICUS | 日本龙胆 | 100H x 200S | 150 | 44.44 | 63563 | |
| BAMBOO PLANTING | | | | | | | |
| BYK | BAMBUSA VIEGARIS CV. WAMIN | 花叶桃金娘 | 1500H x 5 SPOOTS | 500 | 4 | 583 | |

NOTE:

- THIS SKETCH SHALL BE READ IN CONJUNCTION WITH DRAWING NO. 60095653/T2/2621B.

LEGEND:

- SHRUB CODE QUANTITY
- TURF CODE QUANTITY

| Rev. | Date | Description | Drawn | Prepared | Checked |
|------|------|------------------|-------|----------|---------|
| 1 | | FOR CONSTRUCTION | KEC | MYL | YN |

AECOM

CENTRAL - WAN CHAI BYPASS AND IEC LINK
CONTRACT NO. HZ020109
CENTRAL - WAN CHAI BYPASS - TUNNEL
(SRIP ROAD SECTION)

FILE: **SHRUB PLANTING PLAN**

SKETCH NO. 60095653/T2/SK0771 SCALE 1:1000(AS SHOWN)