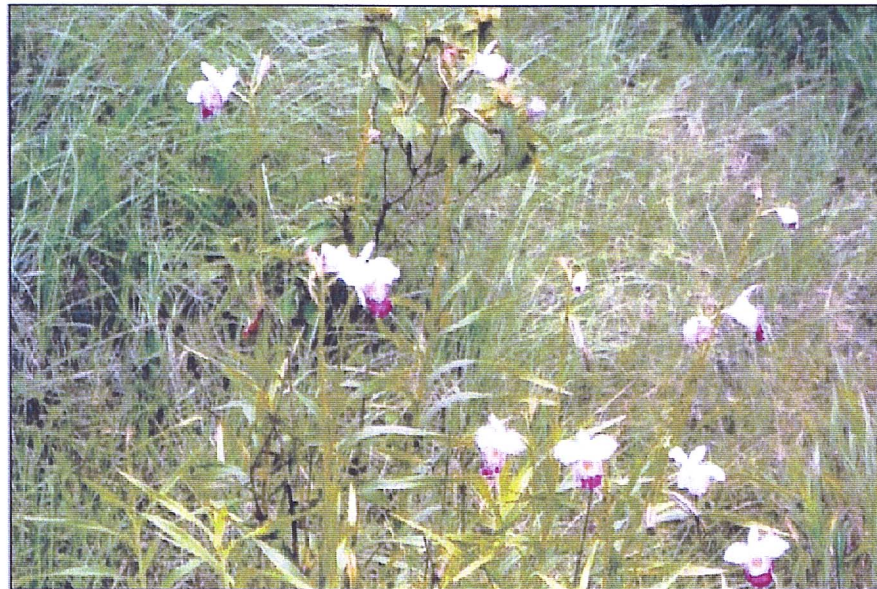




*Camellia sinensis*



*Celtis timorensis*



*Arundina graminifolia*





Romer's Tree Frog



*Rhododendron farrerae*



*Enkianthus quinqueflorus*

Rev	Description	By	Date
Consultants			
 ARUP One Asia Partners Hong Kong Ltd.			
Project Title			
AGREEMENT NO. CE 29/01 OUTLYING ISLANDS STAGE 1 PHASE 1 NGONG PING SEWAGE TREATMENT WORKS AND SEWERAGE			
Drawing Title			
Species of ecological interest recorded within the study area			
Drawing No.	23400/EN/066	Rev.	0
Drawn	YML	Date	17 Apr 02
Checked	KHK	Scale	
	N/A		
DO NOT REPRODUCE			
 香港特別行政區政府渠務署 DRAINAGE SERVICES DEPARTMENT GOVERNMENT OF THE HONG KONG SPECIAL ADMINISTRATIVE REGION			