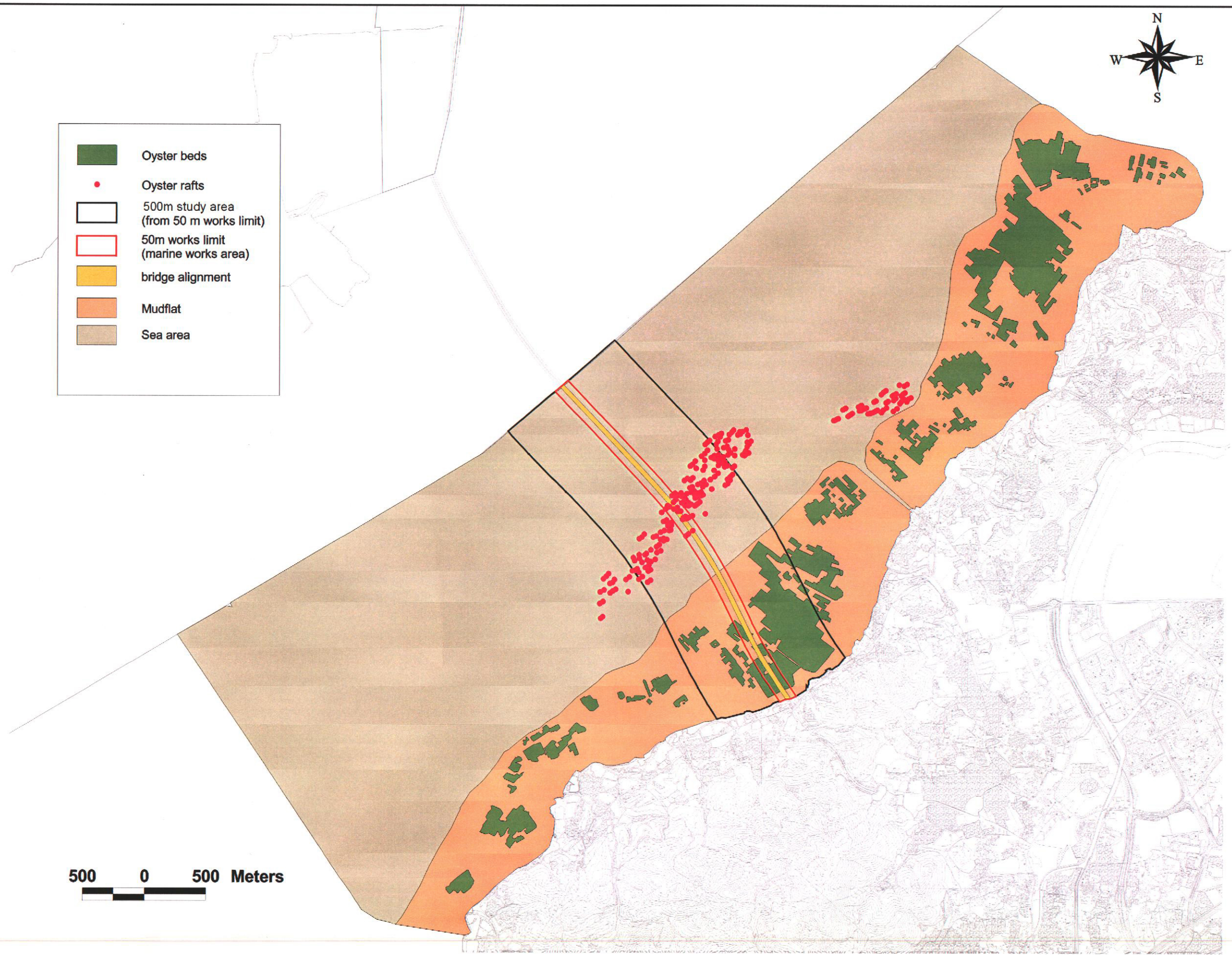


- Oyster beds
- Oyster rafts
- 500m study area (from 50 m works limit)
- 50m works limit (marine works area)
- bridge alignment
- Mudflat
- Sea area



		Designed By: ECO Drawn By: YML Checked By: TDD In Charge: TDD Date: 21 Jun 02	 路政署 HIGHWAYS DEPARTMENT 主要工程管理處 Major Works Project Management Office	Consultant: ARUP 奧雅納工程顧問 Ove Arup & Partners Hong Kong Limited Supported By: Environmental Management Ltd. BMT Asia Pacific Ltd. Urbis Ltd.	Project Title: Shenzhen Western Corridor Investigation & Planning	Drawing Title: Mudflat, oyster beds and oyster rafts from Tsim Bei Tsui to Ha Pak Nai	Cad Filename: Cad Date: Scale: as shown Drawing No.: Figure 10.3 Drawing Status: Rev: 1
--	--	--	--	--	---	---	---