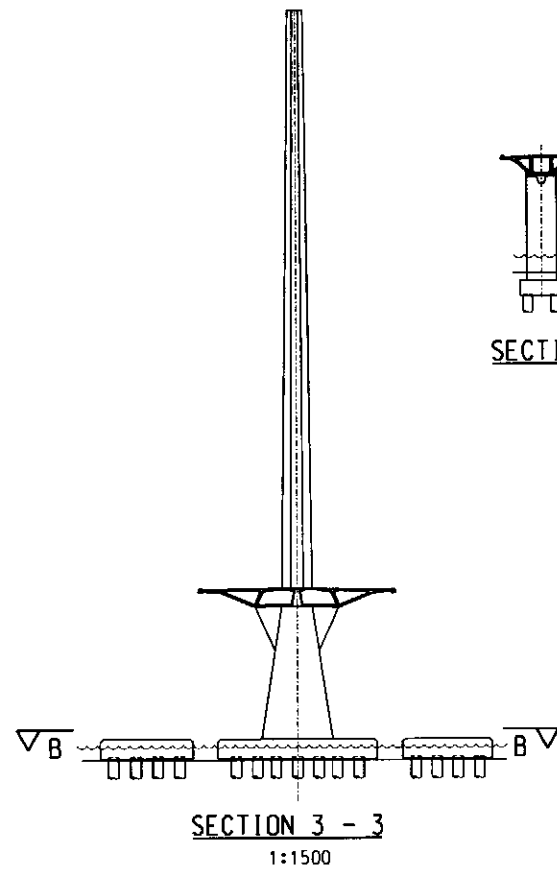


15 TYPICAL SPAN @74.585m

ELEVATION
1:5000

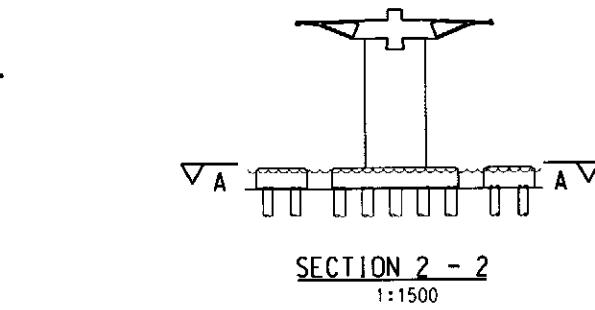
LEGEND

- (E) EXPANSION JOINT PIER
- (M) PIER WITH MOVABLE JOINT
- (F) FIXED PIER

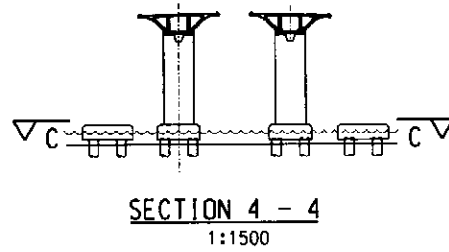


SECTION 1 - 1
1:1500

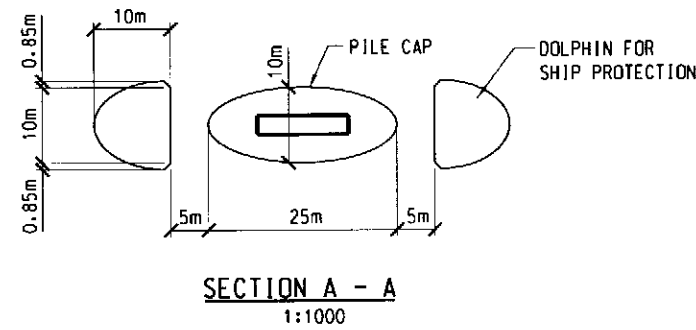
SECTION 3 - 3
1:1500



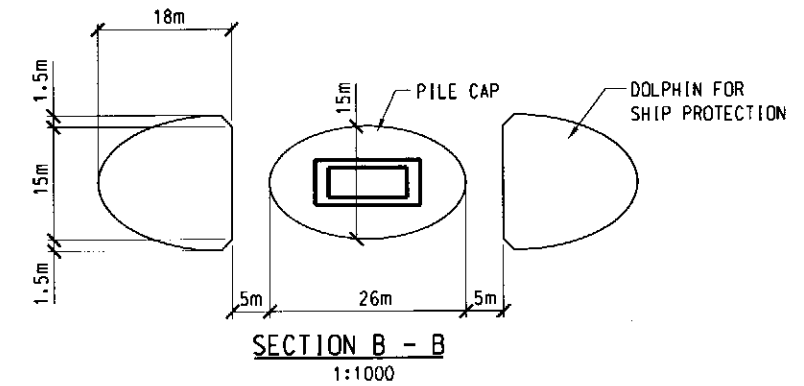
SECTION 2 - 2
1:1500



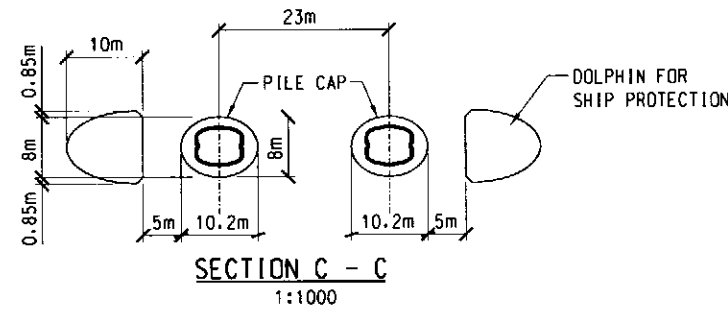
SECTION 4 - 4
1:1500



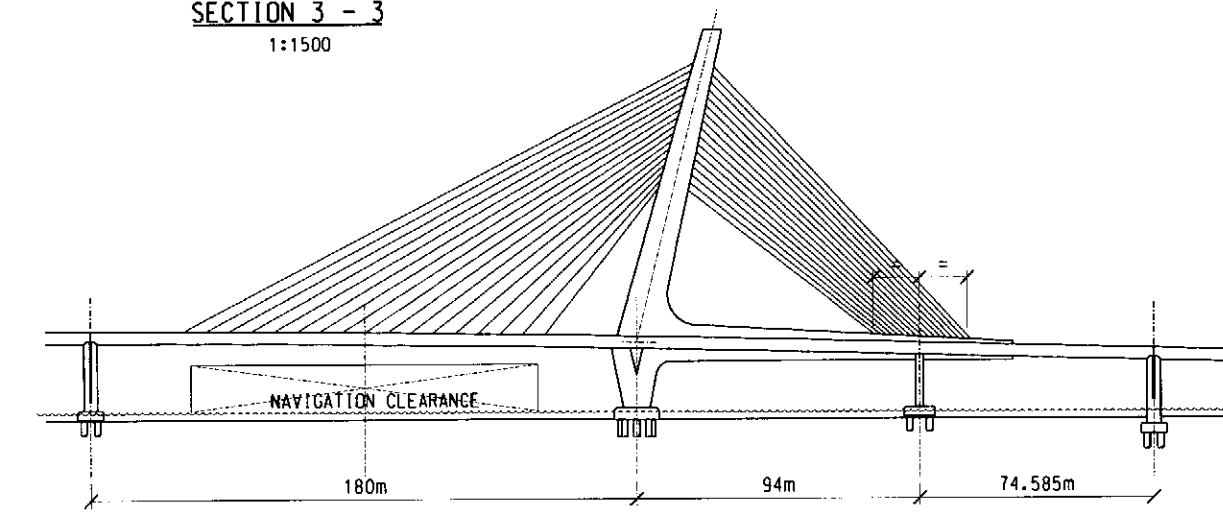
SECTION A - A
1:1000



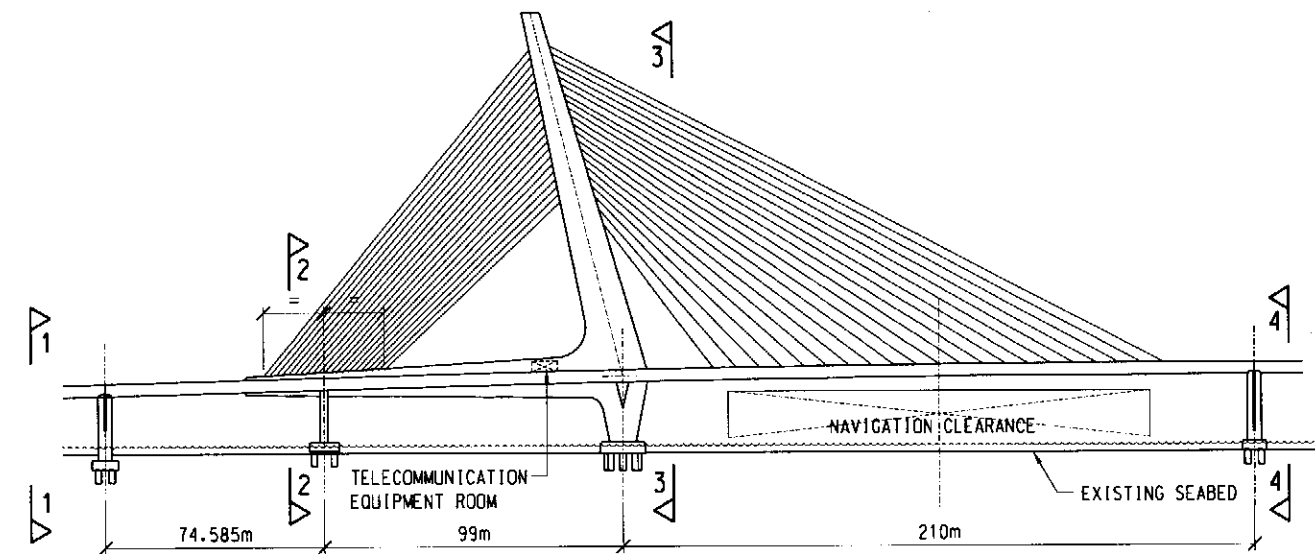
SECTION B - B
1:1000



SECTION C - C
1:1000



ELEVATION OF NORTHERN NAVIGATION SPAN
1:2500



ELEVATION OF SOUTHERN NAVIGATION SPAN
1:2500

NOTE : 1. DIMENSIONS SHOWN ARE INDICATIVE ONLY.
2. ALL DIMENSIONS ARE IN MILLIMETER, UNLESS OTHERWISE STATED

Designed By
LHE
Drawn By
EM
Checked By
LHS
In Charge
SYC
Date
APR 2002

路政署
HIGHWAYS DEPARTMENT
主要工程管理處
Major Works Project Management Office

Consultant
ARUP 奧雅納工程顧問
Ove Arup & Partners Hong Kong Limited
Supported By:
Environmental Management Ltd.
MT Asia Pacific Ltd.
Ebis Ltd.

Project Title
**Shenzhen Western Corridor
Investigation & Planning**

Drawing Title
**MAIN SPANS -
GENERAL ARRANGEMENT**

Code Filename
FIG-13-2.DGN
Code Date
APR 2002
Scale
AS SHOWN
Drawing No.
FIGURE 13.2
Drawing Status
Rev.