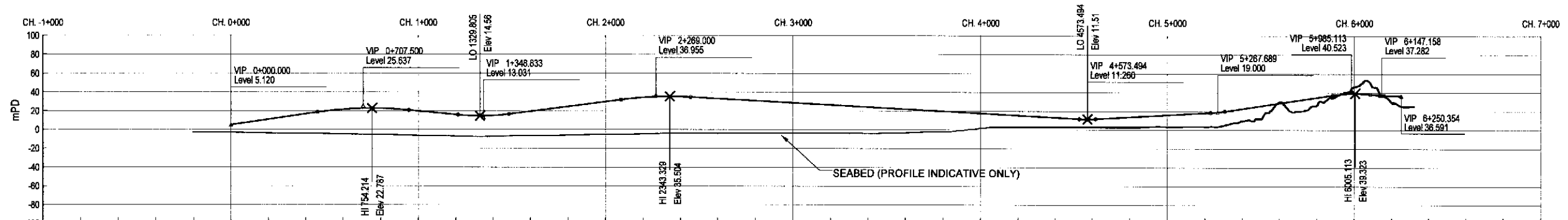


NOTES:

1. ALL LEVELS SHOWN ARE IN MPD, UNLESS OTHERWISE STATED.
2. ALL DIMENSIONS SHOWN ARE IN METRE, UNLESS OTHERWISE STATED.
3. ALL LEVEL SHOWN ARE TENTATIVE ONLY.



HORIZONTAL ALIGNMENT	STRAIGHT																					
VERTICAL ALIGNMENT	$L=464.214$ $G=2.300\%$ $K=100.000$ $VCL=486.572$ $L=201.073$ $G=1.366\%$ $VCL=273.943$ $K=60.000$ $L=587.247$ $G=2.600\%$ $K=100.107$ $VCL=371.887$ $L=2073.845$ $G=-1.115\%$ $VCL=89.200$ $K=40.000$ $L=611.916$ $G=1.115\%$ $VCL=75.360$ $K=38.979$ $L=579.744$ $G=3.000\%$ $K=40.000$ $VCL=200.000$																					
PROPOSED ROAD LEVEL	5.120	18.582	20.855	19.888	15.723	16.592	29.991	31.120	34.882	28.804	17.654	11.757	11.757	18.015	18.580	20.131	37.523	39.320	38.523	37.521	37.282	36.591
CHAINAGE	0+000.000	0+464.214	0+650.786	1+000.000	1+211.881	1+485.805	2+000.000	2+083.052	2+454.946	3+000.000	4+000.000	4+528.894	4+616.094	5+000.000	5+230.028	5+305.369	5+885.113	6+000.000	6+085.113	6+135.188	6+158.128	6+250.354

Printer by : W.MAK  
 File name : j:\23305\WORKING\Draft Final EIA\Fig-4-2.dgn  
 03/09/2002

Mark	Date	By	Rev.

Designed By: OYK  
 Drawn By: TSN  
 Checked By: SK  
 In Charge: SYC  
 Date: 09/2001

路政署  
 HIGHWAYS DEPARTMENT  
 主要工程管理局  
 Major Works Project Management Office

Consultant:  
**ARUP** 奧雅納工程顧問  
 Ove Arup & Partners Hong Kong Limited

Supported By:  
 Environmental Management Ltd.  
 BMT Asia Pacific Ltd.  
 Urbis Ltd.

Project Title:  
 Shenzhen Western Corridor  
 Investigation & Planning

Drawing Title:  
**STRAIGHT BRIDGE (OPTION A)  
 HORIZONTAL AND  
 VERTICAL ALIGNMENT**

Cad File Name: FIG-4-2.DGN  
 Cod Date: 09-2001

Scale: HORI: 1:25,000 VERT: 1:5,000

Drawing No: **FIGURE 4.2**

Drawing Status: Rev.