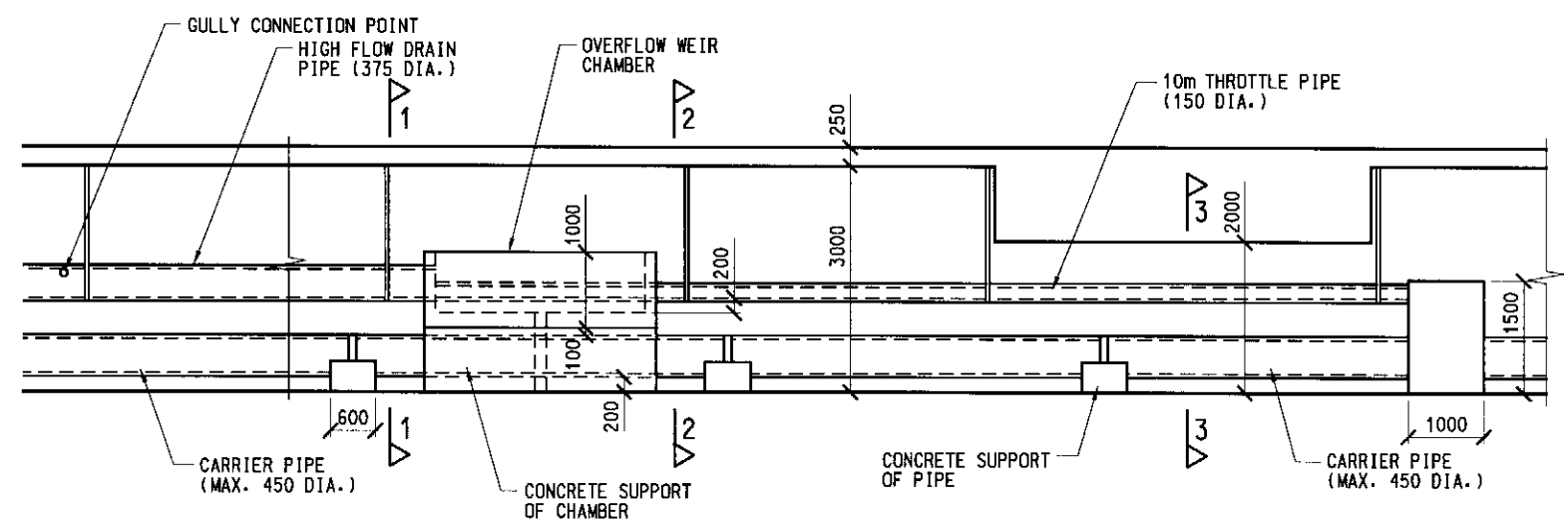
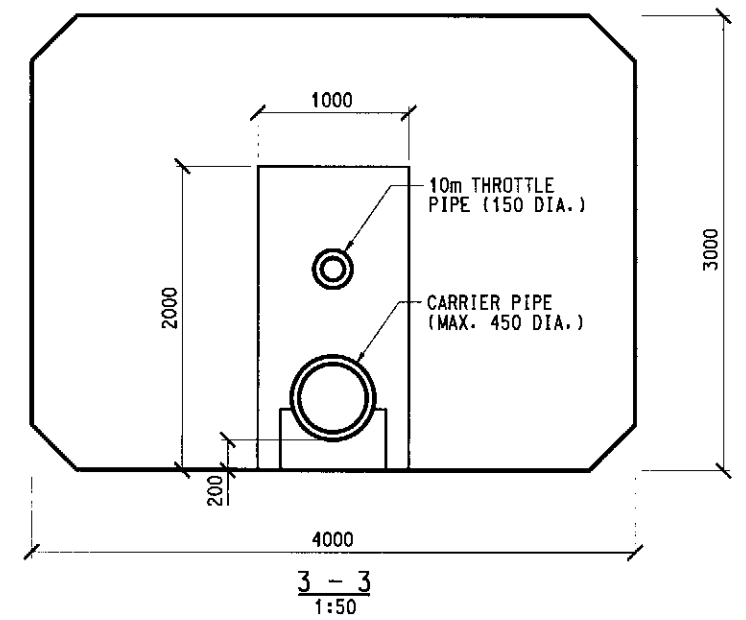
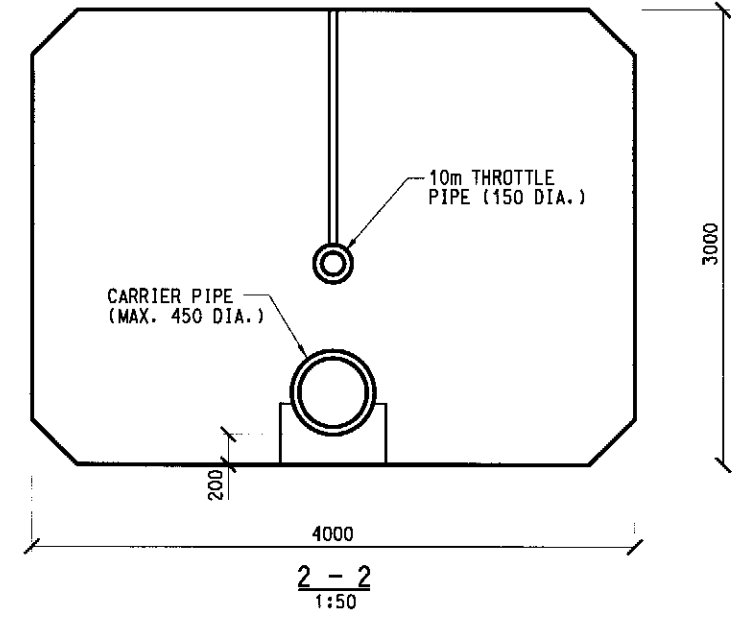
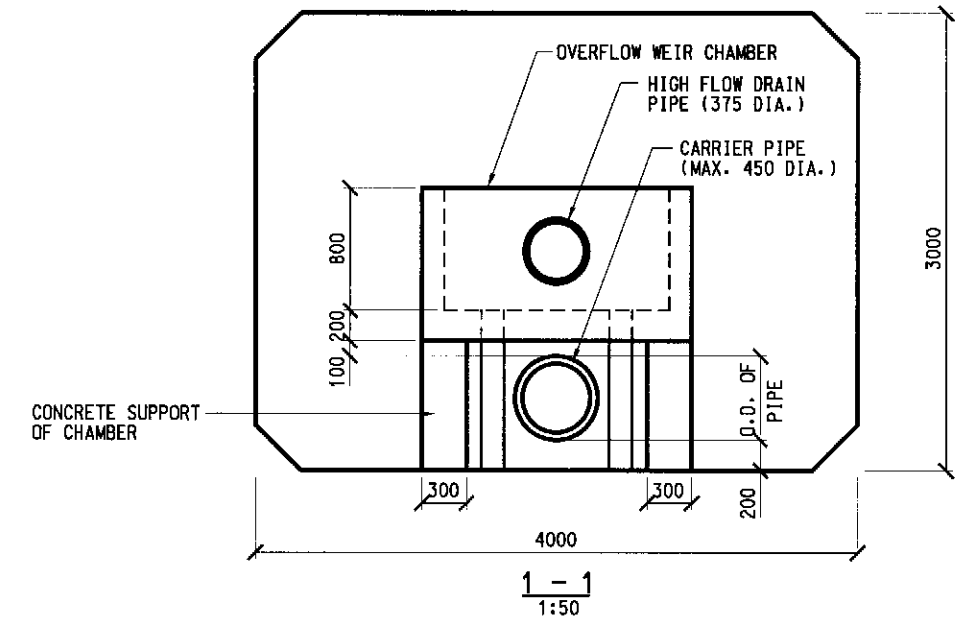


GENERAL LAYOUT OF DRAINAGE INSIDE DECK CELL
 1:100



ELEVATION
 1:100

Printer : W.MAK 03/09/2002
 Filename : F:\23306\WORKING\Draft Final EIA\Fig-7-118.dgn

Mark	Date	By	Rev.

Designed By	YC
Drawn By	WM
Checked By	SGB
In Charge	SYC
Date	DEC 2001


路政署
HIGHWAYS DEPARTMENT
 主要工程管理處
 Major Works Project Management Office

Consultant
ARUP 奧雅納工程顧問
 Ove Arup & Partners Hong Kong Limited
 Supported By:
 Environmental Management Ltd. ○
 BMT Asia Pacific Ltd. ○
 Urbis Ltd. ○

Project Title
Shenzhen Western Corridor
Investigation & Planning

Drawing Title
LOW FLOW INTERCEPTOR
PIPE AND CHAMBER
ARRANGEMENT AT OVERFLOW

Cad Filename	FIG-7-118	Cad Date	DEC 2001
Scale	1:100, 1:50		
Drawing No.	FIGURE 7.118		
Drawing Status		Rev.	