

 Designated Element shown in Brown
 Ngau Tam Mei/San Tin Trunk Sewerage



AA				DESIGNED BY	SW	APPENDIX FIGURE NO. ALIGNMENT - Ngau Tam Mei and San Tin Area (2A - 2T and 2B - 1T) DATE: 20 Jun 2002					
AA				DRAWN BY	SW						
AA				CHECKED BY	FC						
AA				DATE FORW.	ST						
AA											
BB	INT	SI	SUB	APP	DESCRIPTION	FIG	SITE	SI	SUB	APP	DESCRIPTION

ARUP

One Corp & Partners
Hong Kong Limited

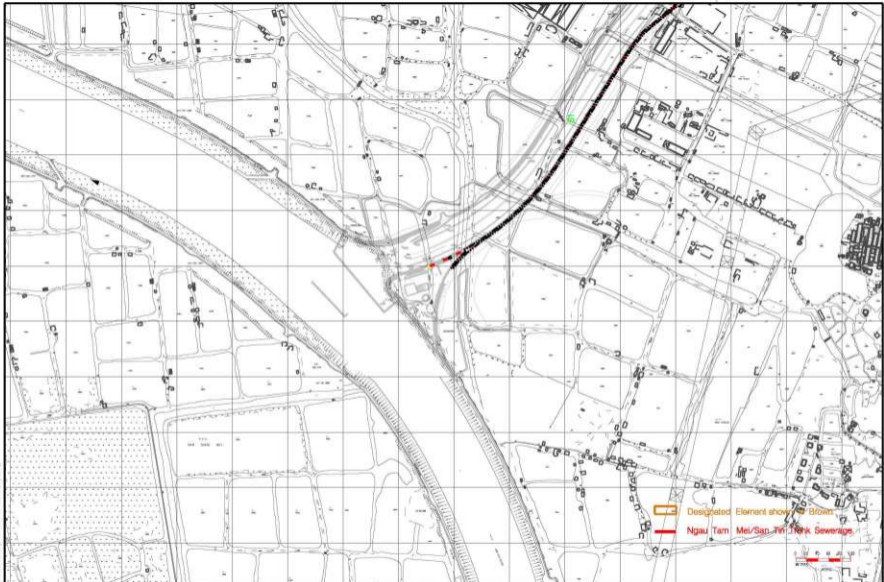
DIA & TIA studies for Stage 2 of
YLCISB Inter Item No. 2160B
- Investigation

REV	NO	DATE	BY	CHKD	DESCRIPTION

Scale: Not to Scale

Figure 1.3

APP	P	O
-----	---	---



DESIGNED BY	SW
DRAWN BY	SW
CHECKED BY	FC
IN CHARGE	ST
DATE	15 Jun 2003

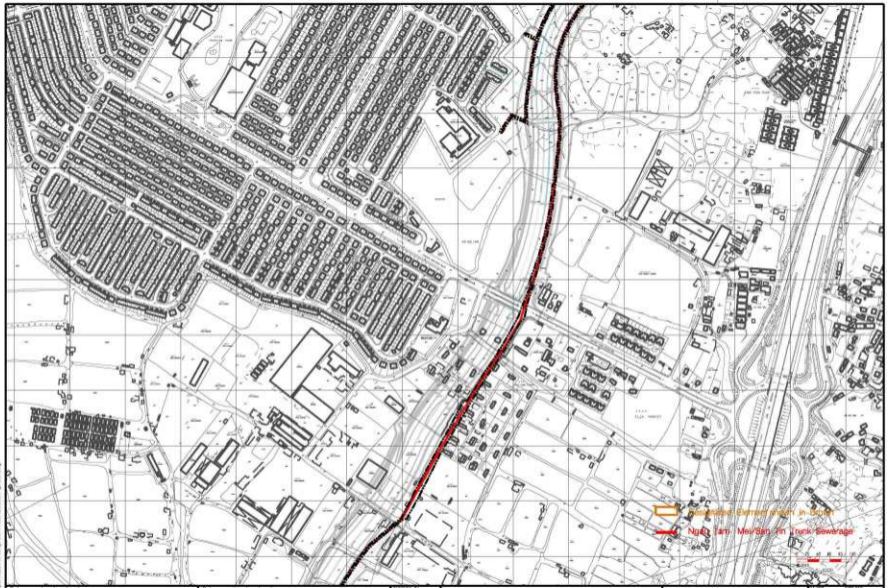
Alignment - Ngau Tam Mei and San Tin Area
(2A - 2T and 2B - 1T)

ARUP Ove Arup & Partners
Hong Kong Limited

EIA & TRA studies for Stage 2 of
YUATSSD PWP Item No 2150S
Investigation

SCALE	1:4000
FIGURE NO.	Figure 1.3.1
DATE	1 of 8

Project Name : YLKTSSD
 Drawing No. : 2-468
 Drawing Title : Alignment - Ngau Tam Mei and San Tin Area
 Scale : 1:4000
 Date : 2010-05-20



Proposed Extension in Scope
— Ngau Tam Mei/San Tin Trunk Sewerage

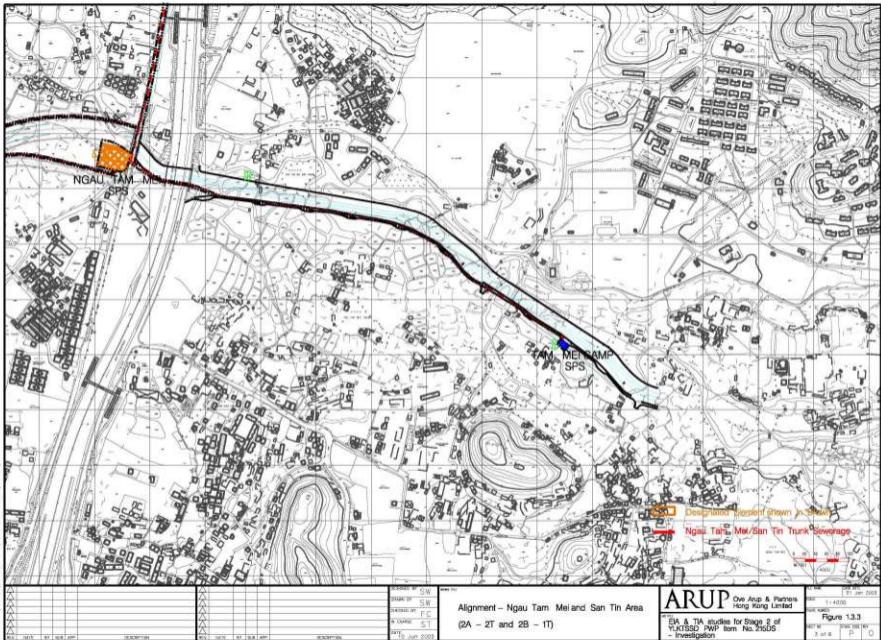
DATE	BY	CHKD	APPD

DESIGNED BY	FC
CHECKED BY	ST
DATE	2010-05-20

Alignment - Ngau Tam Mei and San Tin Area
 (2A - 2T and 2B - 1T)

ARUP One Arup & Partners
 Hong Kong Limited
 EIA & TIA studies for Stage 2 of
 YLKTSSD PWP Item No. 21505
 Investigation

SCALE	1:4000
FIGURE NO.	Figure 1.3.2
DATE	2010-05-20



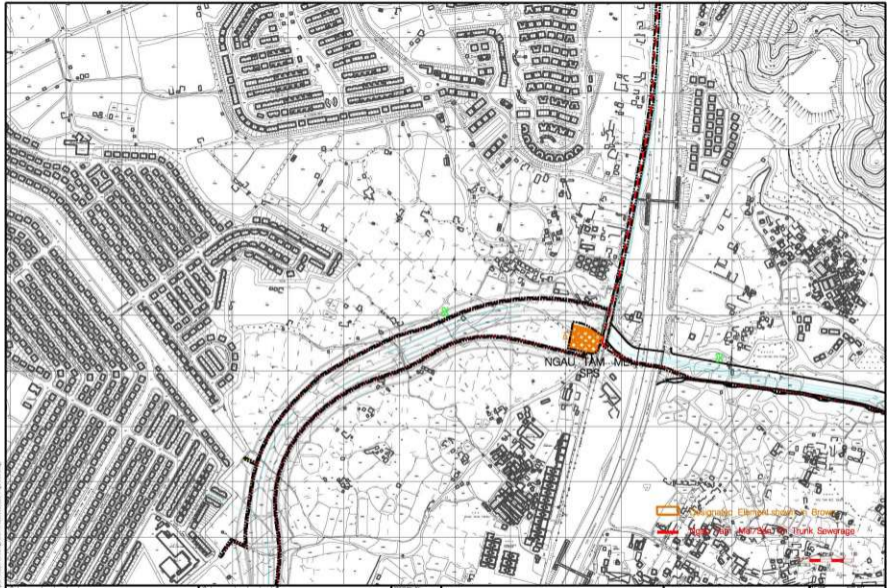
DRAWN BY: [Name] DATE: [Date]
 CHECKED BY: [Name] DATE: [Date]
 APPROVED BY: [Name] DATE: [Date]

DESIGNED BY	SW
DRAWN BY	SW
CHECKED BY	FC
IN CHARGE	ST
DATE	20 Jun 2003

Alignment - Ngau Tam Mei and San Tin Area
 (2A - 2T and 2B - 1T)

ARUP Ove Arup & Partners
 Hong Kong Limited
 EIA & TM studies for Stage 2 of
 WK/SST2 PWS from No. 210/05
 - Investigation

DATE	21 Jun 2003
SCALE	1:4000
FIGURE NO.	Figure 13.3
NO. OF SHEETS	3 of 8
PROJECT NO.	P 0



Legend:
Orange square: Sewerage Element (SPS) - Brown
Red dashed line: Main Trunk Sewerage

DATE	BY	NO.	REV.

DESIGNED BY	SW
CHECKED BY	SW
DRAWN BY	PC
SCALE	ST
DATE	1.8.2011

Alignment - Ngau Tam Mei and San Tin Area
(2A - 2T and 2B - 1T)

ARUP One Arup & Partners
Hong Kong Limited

EIA & TA studies for Stage 2 of
Y1-4000 PWP Item No. 216DS
- Investigation

Figure 1.3.4
Scale: 1:1000
Date: 1.8.2011



 Proposed Stormwater Drain
 Ngau Tam Mei/San Tin (T1) Sewerage

DATE	BY	CHKD	APPD

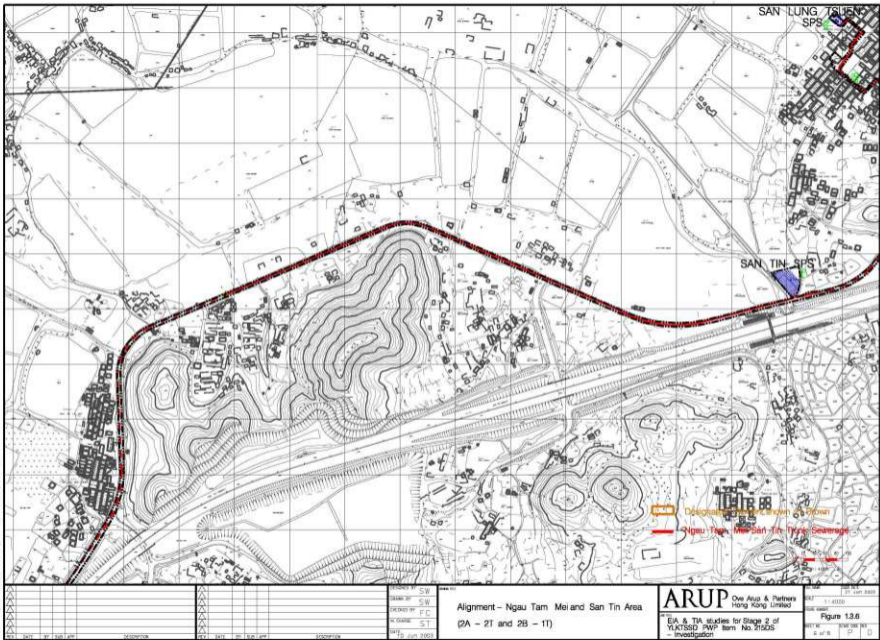
DESIGNED BY	SW
CHECKED BY	SW
IN CHARGE	FC
DATE	ST

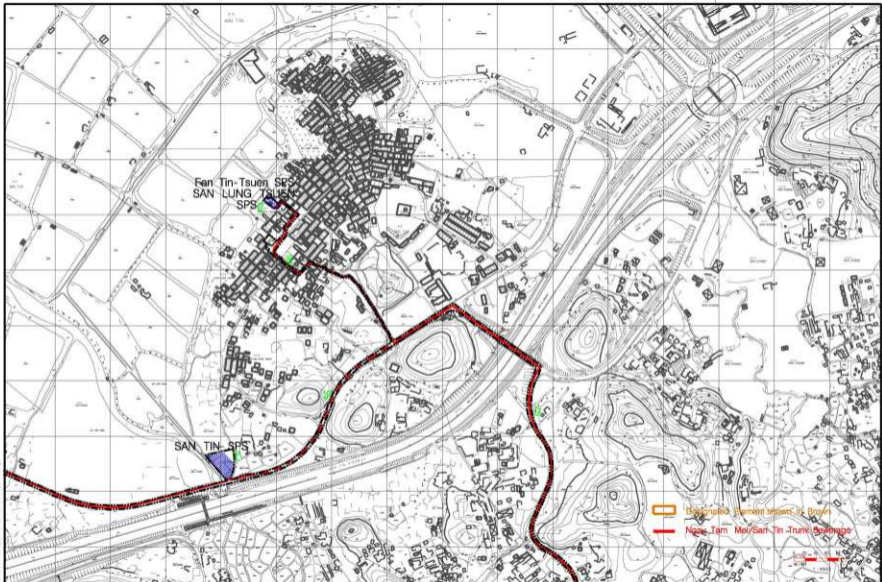
PROJECT NO. SW
 DRAWING NO. SW
 DATE 20 Jun 2011

Alignment - Ngau Tam Mei and San Tin Area
 (2A - 2T and 2B - 1T)

ARUP One Arup & Partners
 Hong Kong Limited
 EIA & TIA studies for Stage 2 of
 YLKTSSD PWP Item No. 215D6
 - Invescigation

SHEET 11-0300
 OF 0300
 Figure 13.5
 5 of 5
 P 0





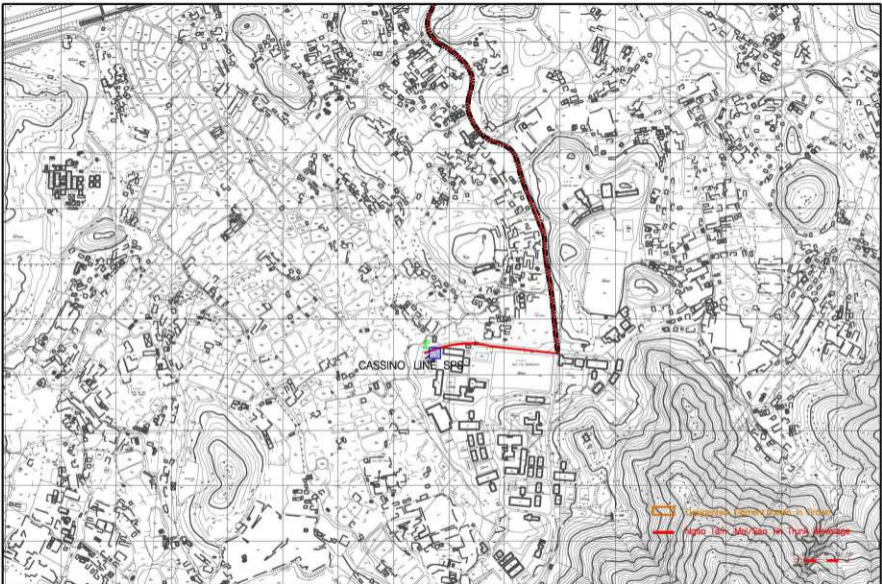
- Discharge Element Areas of Brown
- Ngau Tam Mei/San Tin-Trunk Sewerage

1:1000	1:1000	1:1000	1:1000
1:1000	1:1000	1:1000	1:1000
1:1000	1:1000	1:1000	1:1000
1:1000	1:1000	1:1000	1:1000

DESIGNED BY	SW
CHECKED BY	SW
DRAWN BY	FC
IN CHARGE	ST
DATE	10 JUN 2005

Alignment - Ngau Tam Mei and San Tin Area
(2A - 2T and 2B - 1T)

ARUP Ove Arup & Partners Hong Kong Limited	SCALE	1:10000
	FIGURE NO.	Figure 1.3.7
PROJECT	CIA & TIA studies for Stage 2 of YLKTSSD FWP Item No. 21050 - Investigation	
DATE	10 JUN 2005	P 0



CASSINO LINE SPS

-  Proposed Common Zone of Study
-  Ngau Tam Mei/San Tin Thru Message

DATE	BY	CHKD BY	APP'D BY

DESIGNED BY	FC
CHECKED BY	ST
DATE	

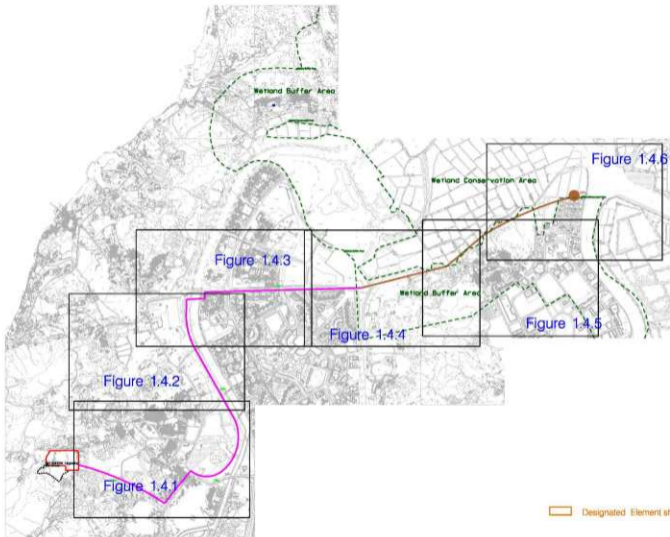
SCALE	1:4000
-------	--------

Alignment – Ngau Tam Mei and San Tin Area
(2A – 2T and 2B – 1T)

ARUP One Arup & Partners
Hong Kong Limited

EIA & TIA studies for Stage 2 of
YUKTSSD PWP Item No. 21505
Investigation

DATE	2018.08.08
SCALE	1:4000
FIGURE NO.	Figure 1.3.8
DATE	2018.08.08



NO.	REV.	BY	DATE	REVISION	NO.	REV.	BY	DATE	REVISION

DESIGNED BY	SW
DRAWN BY	SW
CHECKED BY	F.C.
IN CHARGE	ST
DATE	21 Jan 2010

Alignment - Yuen Loong / San Wai
(PA-TT Conforming Scheme)

ARUP Ove Arup & Partners
Hong Kong Limited

FOR THE
EIA & TIA studies for Stage 2 of
PWP Item No. 215DS and Sewerage
Extension at Stage 1 - Investigation

PROJECT NO.	215 DS
DATE	17 Oct 2009
SCALE	As Shown
FIGURE NO.	Figure 1.4
REV.	0



1:1	1:2	1:3	1:4	1:5	1:6	1:7	1:8	1:9	1:10
1:11	1:12	1:13	1:14	1:15	1:16	1:17	1:18	1:19	1:20

DESIGNED BY	SW
CHECKED BY	SW
DRAWN BY	FC
IN CHARGE	ST
DATE	10 Jun 2005

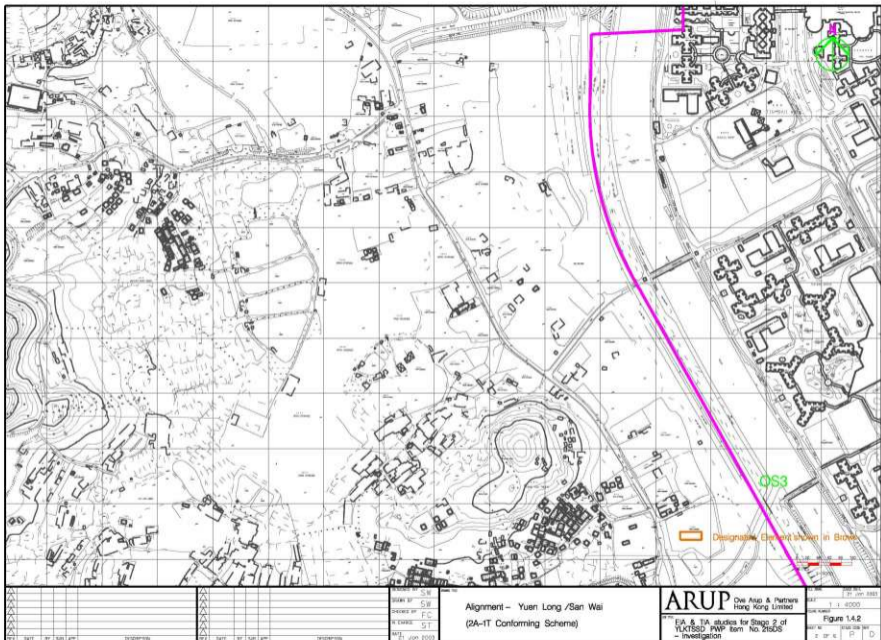
SCALE	1:1000
-------	--------

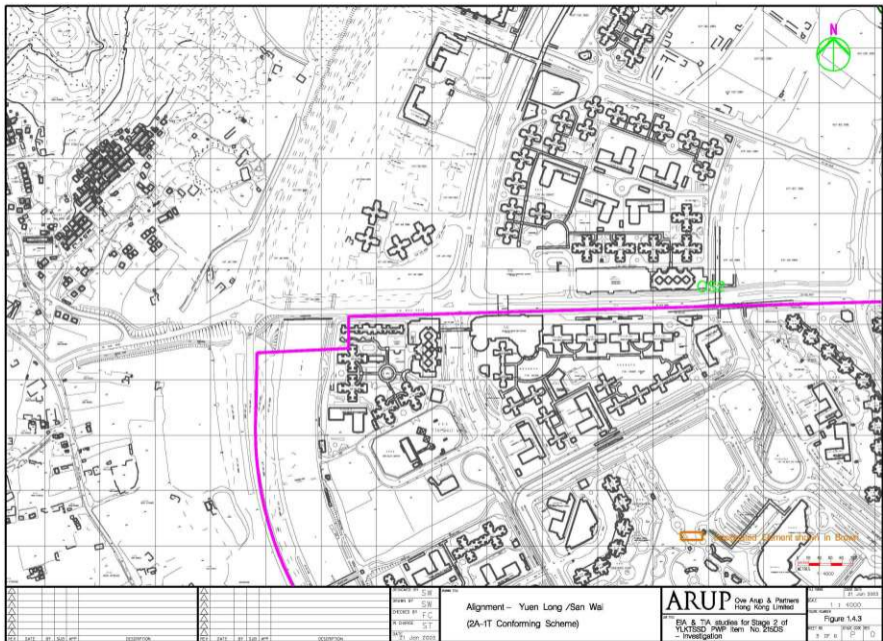
Alignment - Yuen Long / San Wai
(2A-1T Conforming Scheme)

ARUP Ove Arup & Partners
Hong Kong Limited

EIA & TIA studies for Stage 2 of
YK13SD1 IWP Item No. 21605
- Investigation

FIG. NO.	1.4.1
DATE	10 Jun 2005
SCALE	1:1000
PROJECT NO.	YK13SD1 IWP
ITEM NO.	21605
STAGE	Investigation





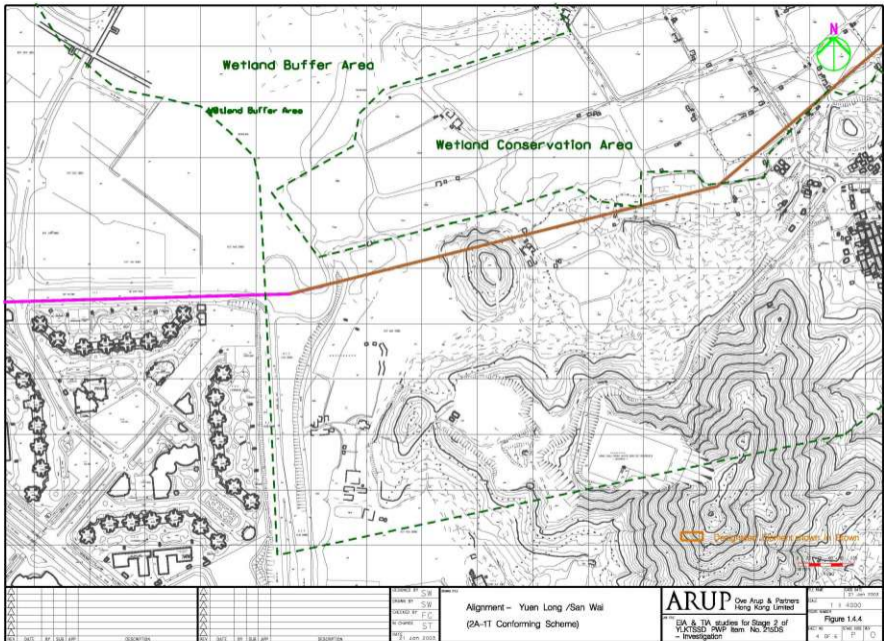
DATE: 21 JUN 2023	DESCRIPTION:	DATE: 21 JUN 2023	DESCRIPTION:
DATE: 21 JUN 2023	DESCRIPTION:	DATE: 21 JUN 2023	DESCRIPTION:
DATE: 21 JUN 2023	DESCRIPTION:	DATE: 21 JUN 2023	DESCRIPTION:

DESIGNED BY	SW
CHECKED BY	SW
IN CHARGE	FC
DATE	21 JUN 2023

Alignment - Yuan Long /San Wai
(2A-1T Conforming Scheme)

ARUP One Arup & Partners
Hong Kong Limited

DATE: 21 JUN 2023
SCALE: 1 : 1 000.00
PROJECT: YL47350 PWP Item No. 21505
FIGURE: Figure 1.4.3
DRAWN: PLO
CHECKED: PLO



Wetland Buffer Area

Wetland Buffer Area

Wetland Conservation Area

Proposed alignment shown in brown

DATE	NO.	BY	FOR

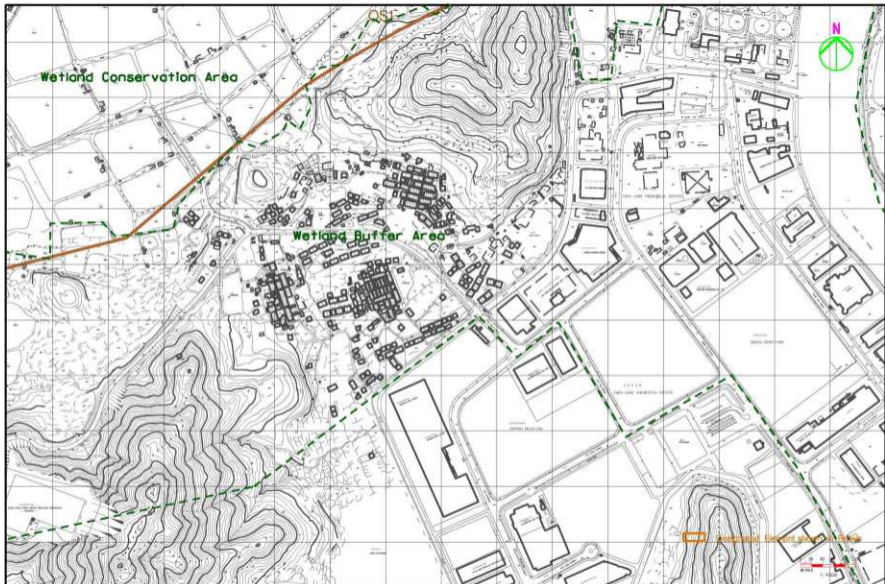
DESIGNED BY	SW
CHECKED BY	SW
APPROVED BY	FC
DATE	21 JUN 2023

Alignment - Yuan Long /San Wai
(2A-1T Conforming Scheme)

ARUP One Arup & Partners
Hong Kong Limited

EA & TA studies for Stage 2 of
YKTSSD PWP Item No. 215D5
- Investigation

SCALE	1:1000
FIGURE NO.	Figure 1.4.4
DATE	21 JUN 2023
PROJECT NO.	4 21 4 P 10



1:100	1:200	1:500	1:1000	1:2000	1:5000	1:10000
1:100	1:200	1:500	1:1000	1:2000	1:5000	1:10000

DESIGNED BY	FC
CHECKED BY	ST
DATE	NOV 2023

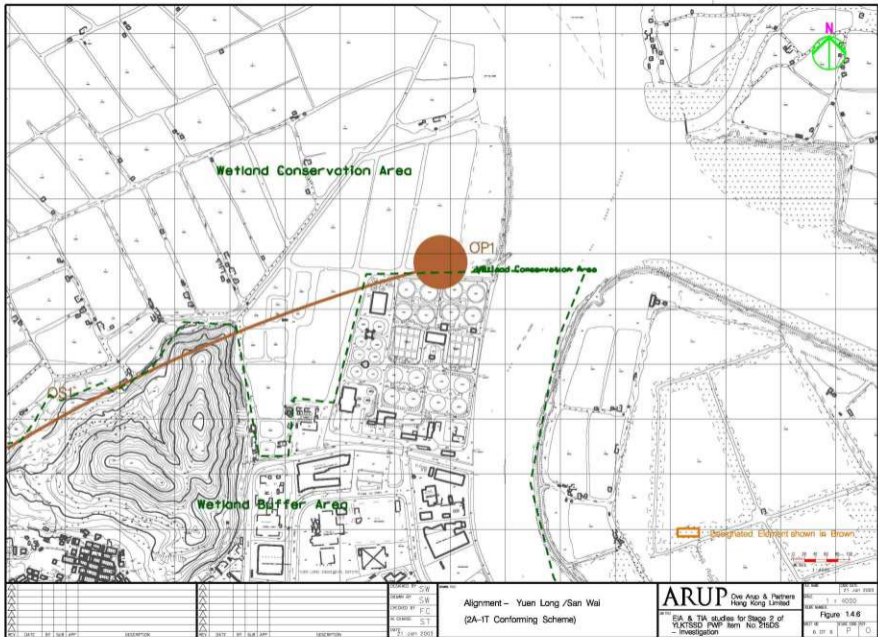
DESIGNED BY	SW
CHECKED BY	SW
DATE	NOV 2023

Alignment - Yuen Long /San Wai
(2A-IT Conforming Scheme)

ARUP One Arup & Partners
Hong Kong Limited

EIA & TIA studies for Stage 2 of
YK15SD PWP Item No. 216DS
- Investigation

Scale: 1:4000
Figure 14.5
1 of 6 P D

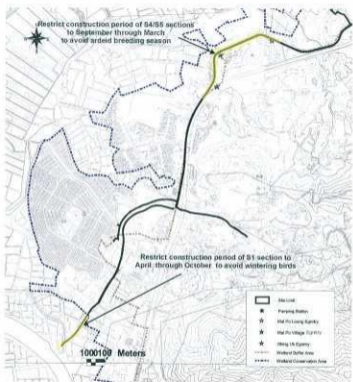
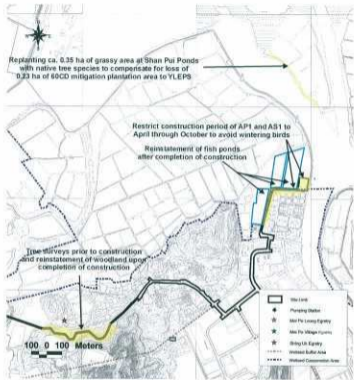


DATE	BY	CHKD BY	DESCRIPTION	DATE	BY	CHKD BY	DESCRIPTION

DESIGNED BY	SW
CHECKED BY	SW
APPROVED BY	FC
DATE	21 Jan 2003

ALIGNMENT - Yuen Long / San Wai
(2A-1T Conforming Scheme)

ARUP Ove Arup & Partners Hong Kong Limited EIA & TA studies for Stage 2 of YLKTSSD PWP Item No 214D6 - Investigation	DATE	21 Jan 2003
	SCALE	1 : 4000
	FIGURE NO.	Figure 14.6
	DATE	01/01/03
	BY	P O



NO.	REV	DATE	DESCRIPTION	REVISION NO.	DATE	DESCRIPTION

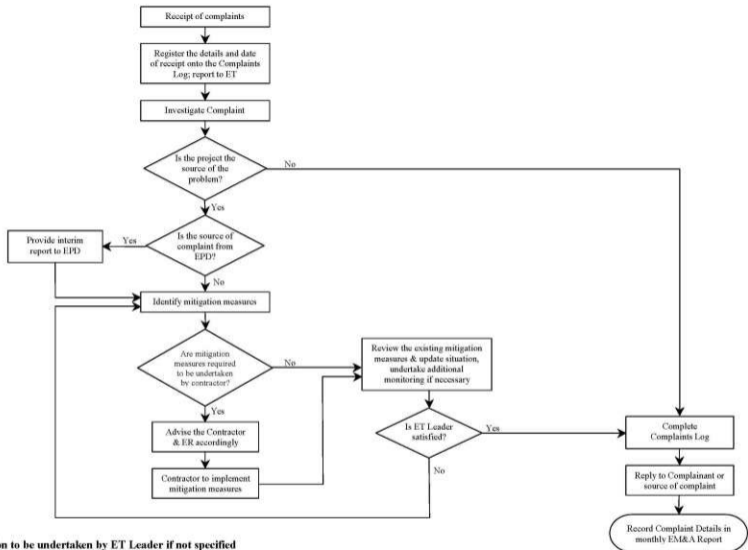
DATE:	05 Mar 04
DRAWN BY:	YML
CHECKED BY:	YML
DESIGNED BY:	YML
APPROVED BY:	YML
SCALE:	1:500

Recommendations for various Works Package

ARUP Orr Wong & Partners
Hong Kong Limited

EIA & TIA studies for Stage 2 of 'TRACTED' PWP' Item No. 2/105 Investigation

DATE:	05 Mar 04
SCALE:	1:500
PROJECT NO.:	N/A
FIGURE NO.:	Figure 7.1
PAGE NO.:	P. 0



Note: Action to be undertaken by ET Leader if not specified

NO.	BY	DATE	DESCRIPTION	NO.	BY	DATE	DESCRIPTION

Complaint Response Procedure

 <small>ARUP</small> <small>Est. Arup & Partners</small> <small>Hong Kong Limited</small>	FILE NO.	FORM NO.
	DATE	NTS
	YEAR	
<small>ERA and TIA Studies for the Stage 2 of PMP Item No. 23709 - Yuen Long and San Tin Sewerage and Storage Disposal (V1.07/2011)</small>	FIGURE NO.	Figure 10.1
DATE	PAGE NO.	P 9