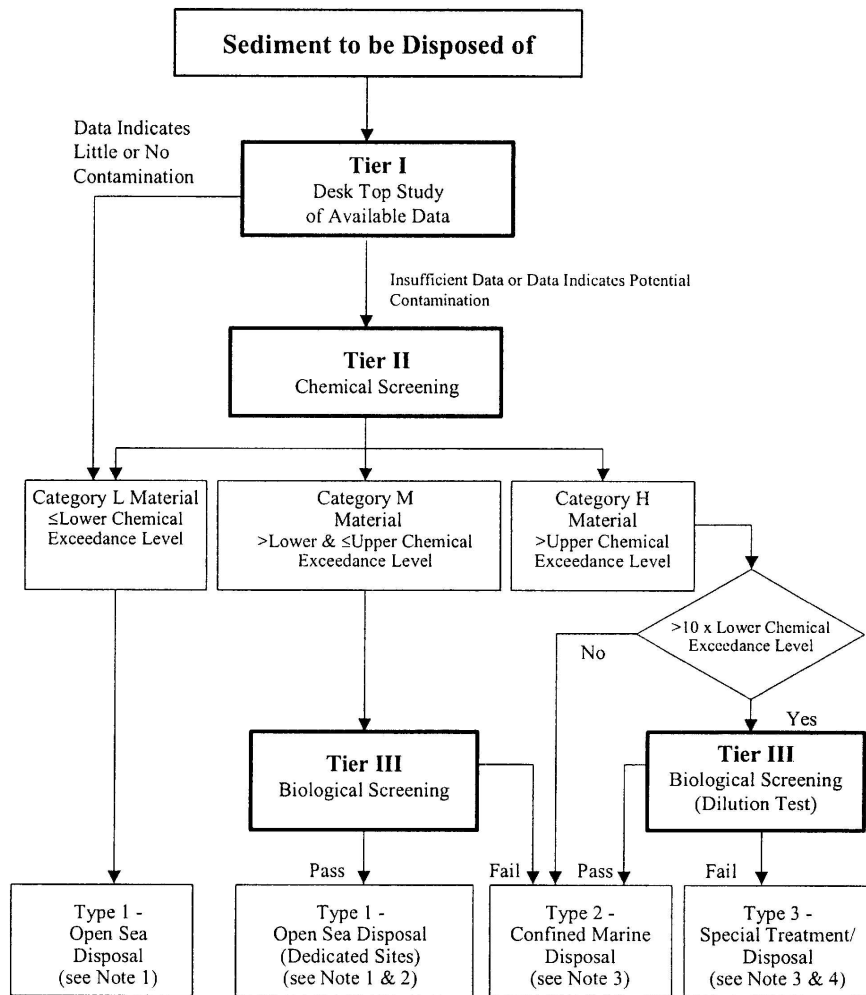


## Management Framework for Dredged/Excavated Sediment



### Notes

- (1) Most open sea disposal sites are multi-user facilities and as a consequence their management involves a flexibility to accommodate varying and unpredictable circumstances. Contract documents should include provisions to allow the same degree of flexibility should it be necessary to divert from one disposal site to another during the construction period of a contract.
- (2) Dedicated Sites will be monitored to confirm that there is no adverse impact.

(Source: Environment, Transport and Works Bureau Technical Circular (Works) No. 34/2002 Management of Dredged/Excavated Sediment, Appendix C)

