

Figure 4.4

Isopleths of Cumulative Maximum Hourly NO₂ at 1.5m Above Ground
(Emissions from LNG Terminal + Background)

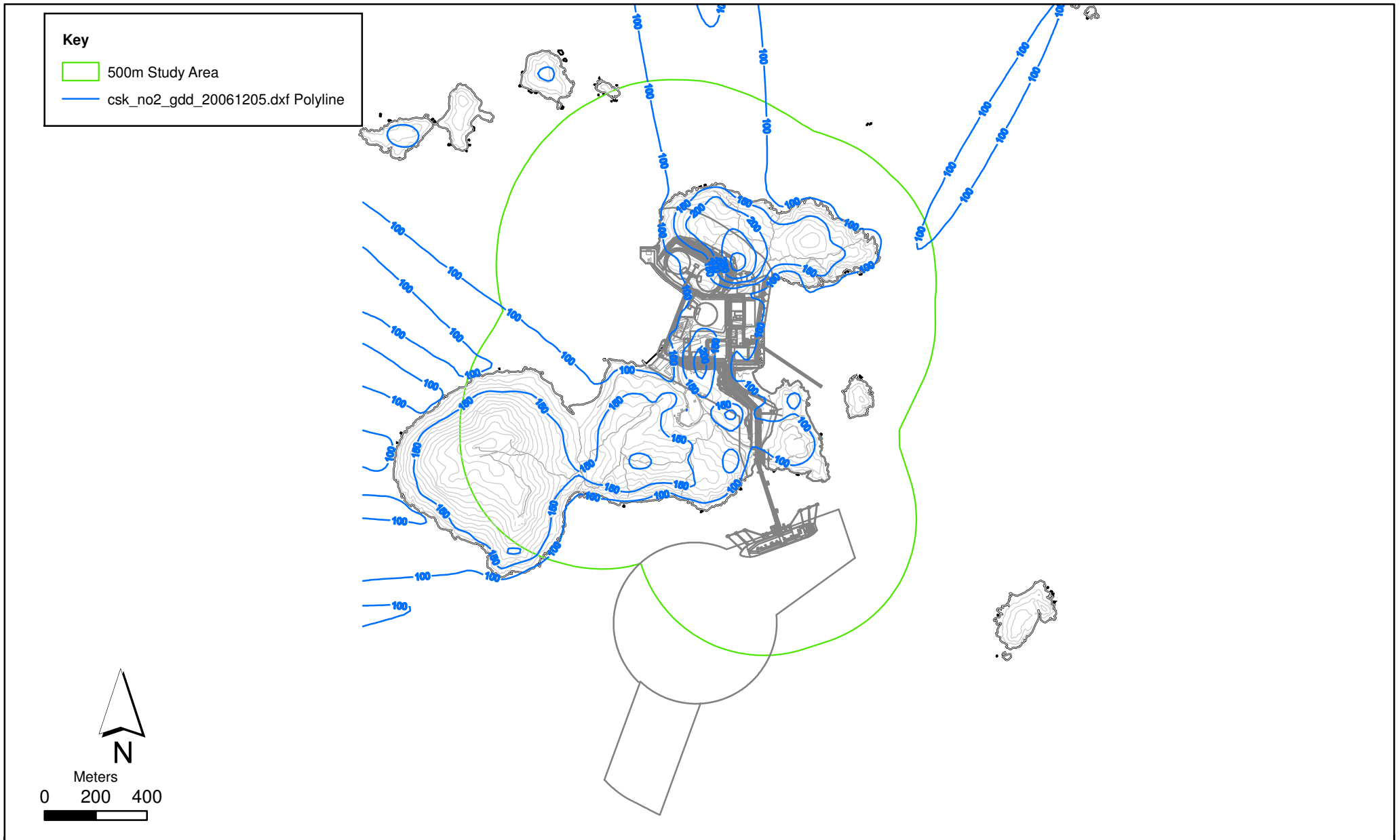


Figure 4.5

Isopleths of Cumulative Daily NO₂ at 1.5m Above Ground
(Emissions from LNG Terminal + Background)

File: Report_August/0018180_Air_NO2_GDHC_SK_1.mxd
Date: 05/12/2006

Environmental
Resources
Management



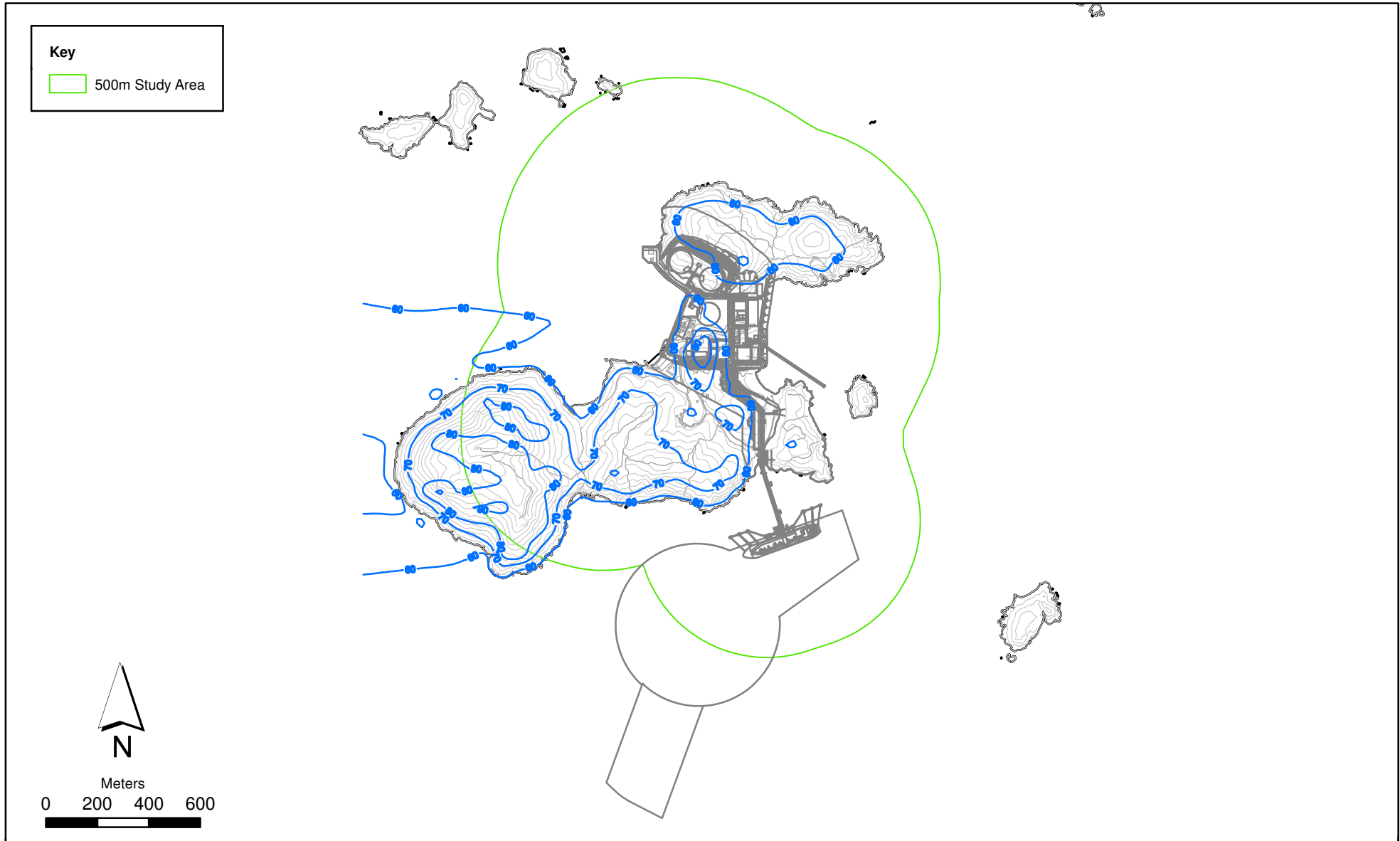


Figure 4.6

Isopleths of Cumulative Annual Average NO₂ at 1.5m Above Ground
(Emissions from LNG Terminal + Background)

File: Report_August/0018180_Air_NO2_GDHC_SK_2.mxd
Date: 05/12/2006

Environmental
Resources
Management



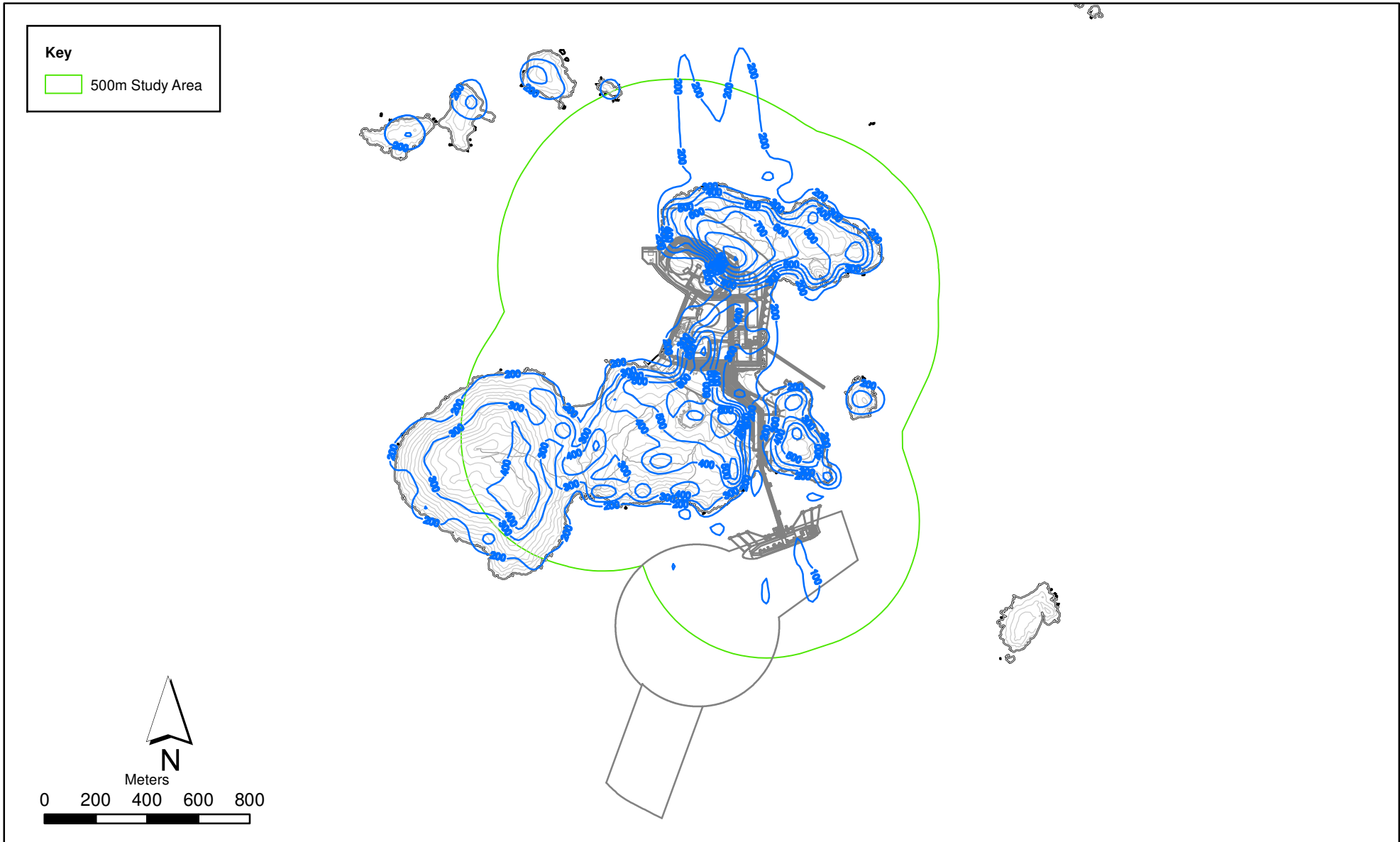


Figure 4.7

Isopleths of Cumulative Maximum Hourly NO₂ at 10m Above Ground
(Emissions from LNG Terminal + Background)

File: Report_August/0018180_Air_NO2_10hc_SK_1.mxd
Date: 05/12/2006

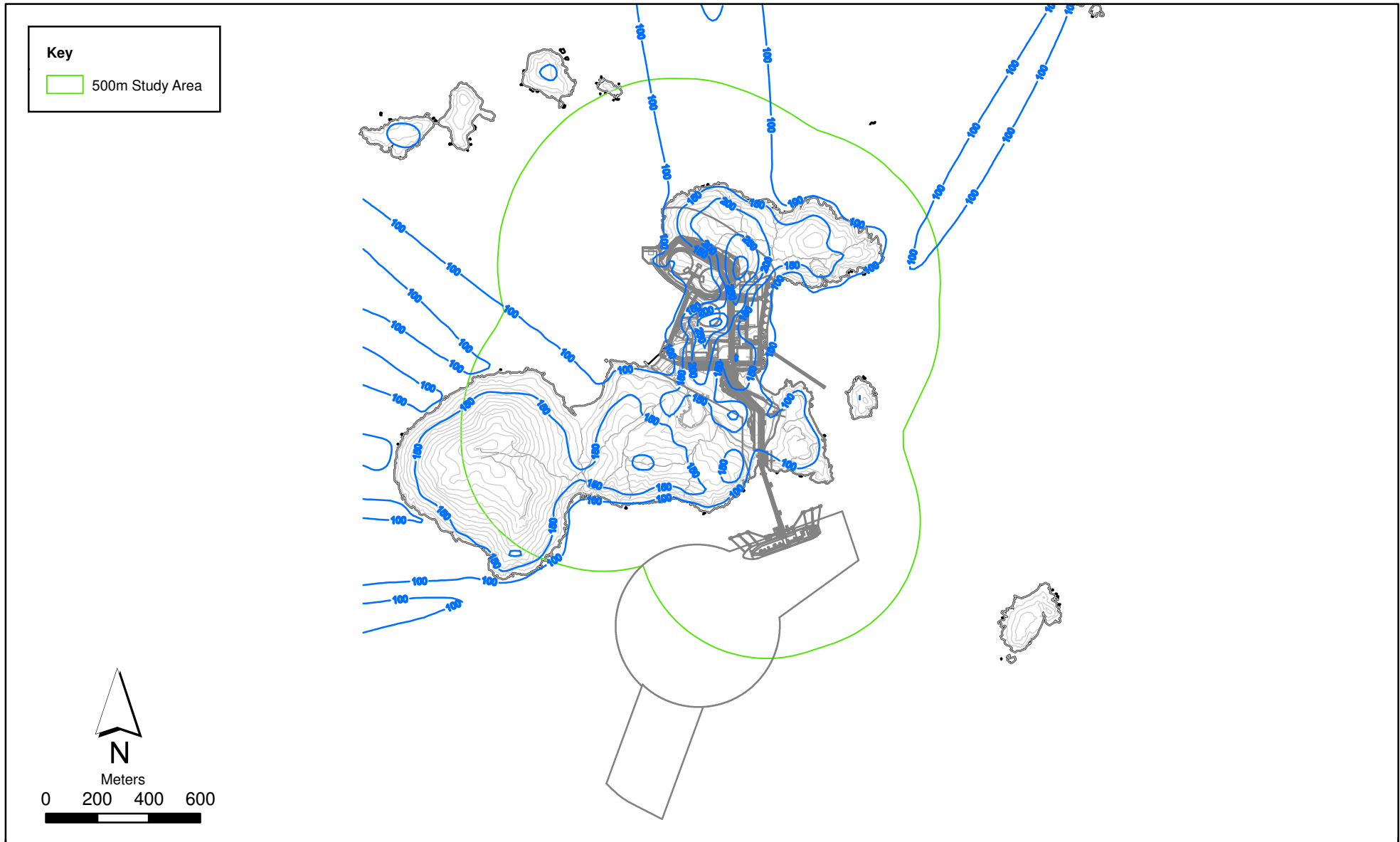


Figure 4.8

Isopleths of Cumulative Daily Averaged NO₂ at 10m Above Ground
(Emissions from LNG Terminal + Background)

File: Report_August/0018180_Air_NO2_10dc_SK_1.mxd
Date:05/12/2006

Environmental
Resources
Management



Key

 500m Study Area

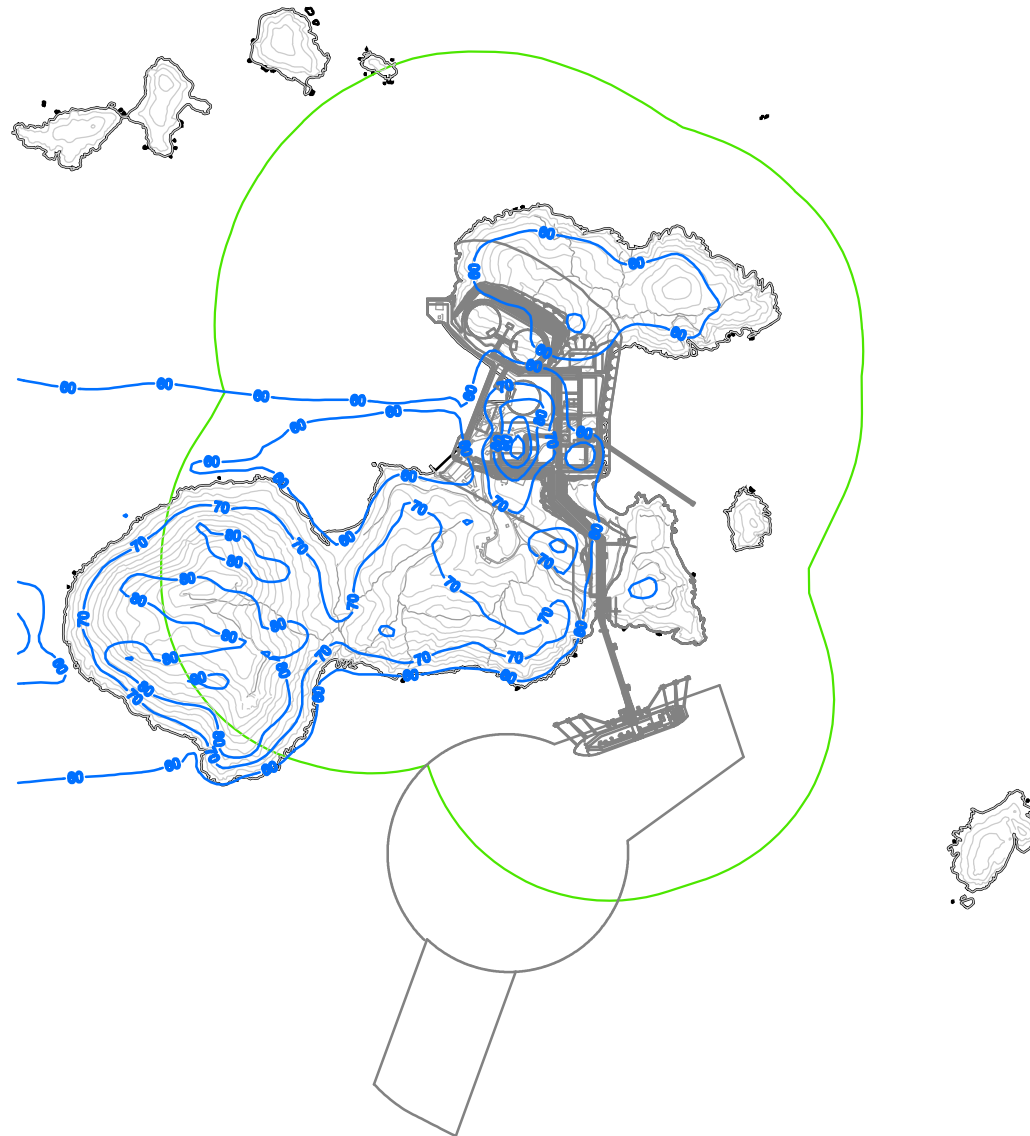


Figure 4.9


Isopleths of Cumulative Annual Averaged NO₂ at 10m Above Ground
(Emissions from LNG Terminal + Background)

File: Report_August/0018180_Air_NO2_10ac_SK_1.mxd
Date: 05/12/2006

**Environmental
Resources
Management**



Key

 500m Study Area

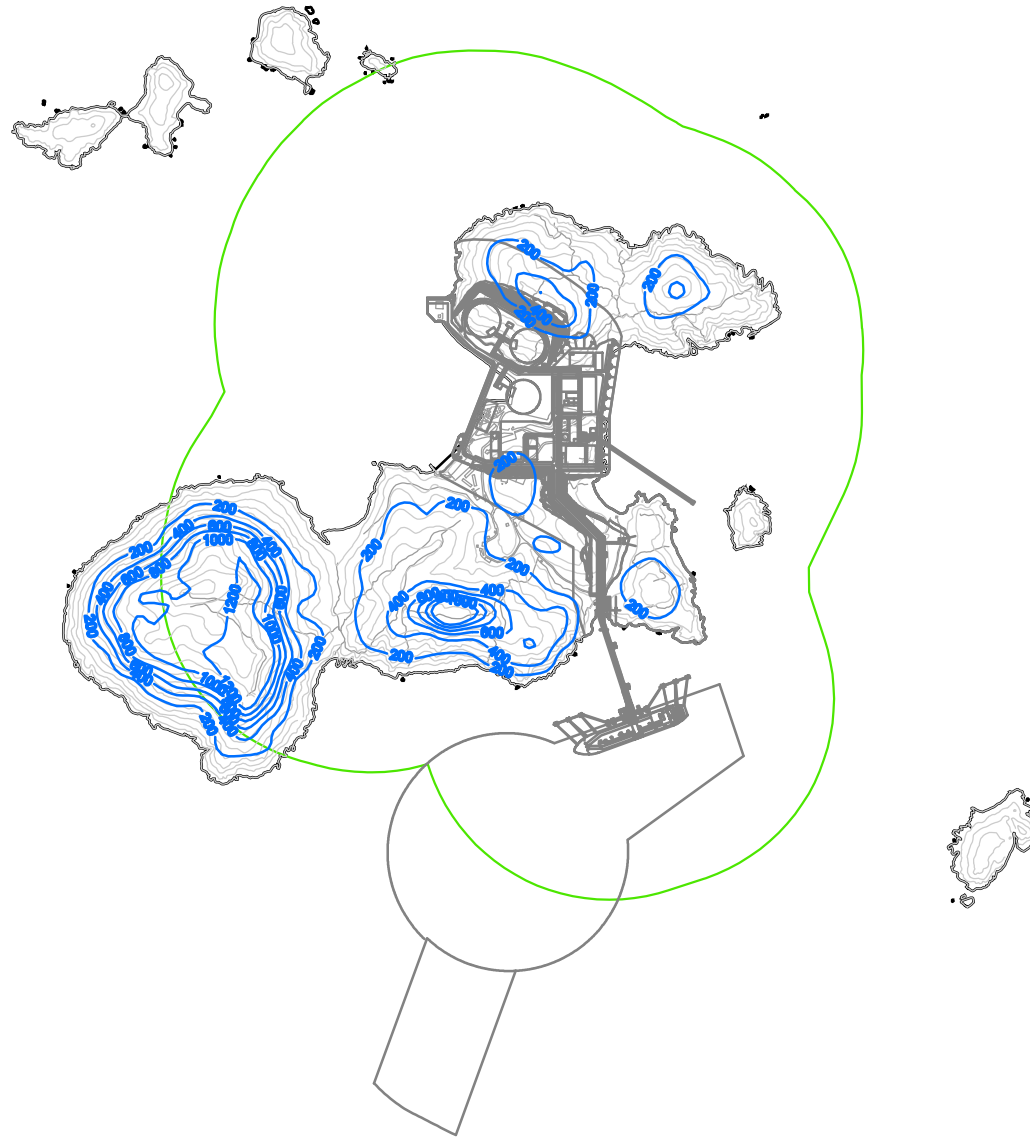


Figure 4.10


Isopleths of Cumulative Maximum Hourly SO₂ at 1.5m Above Ground
(Emissions from LNG Terminal + TC AQMS Background)

File: Report_August/0018180_Air_SO2_GDH_SK_1.mxd
Date: 07/12/2006

**Environmental
Resources
Management**



Key

 500m Study Area

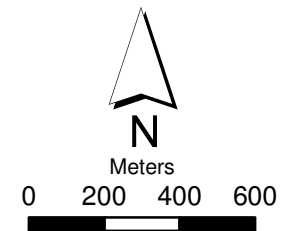
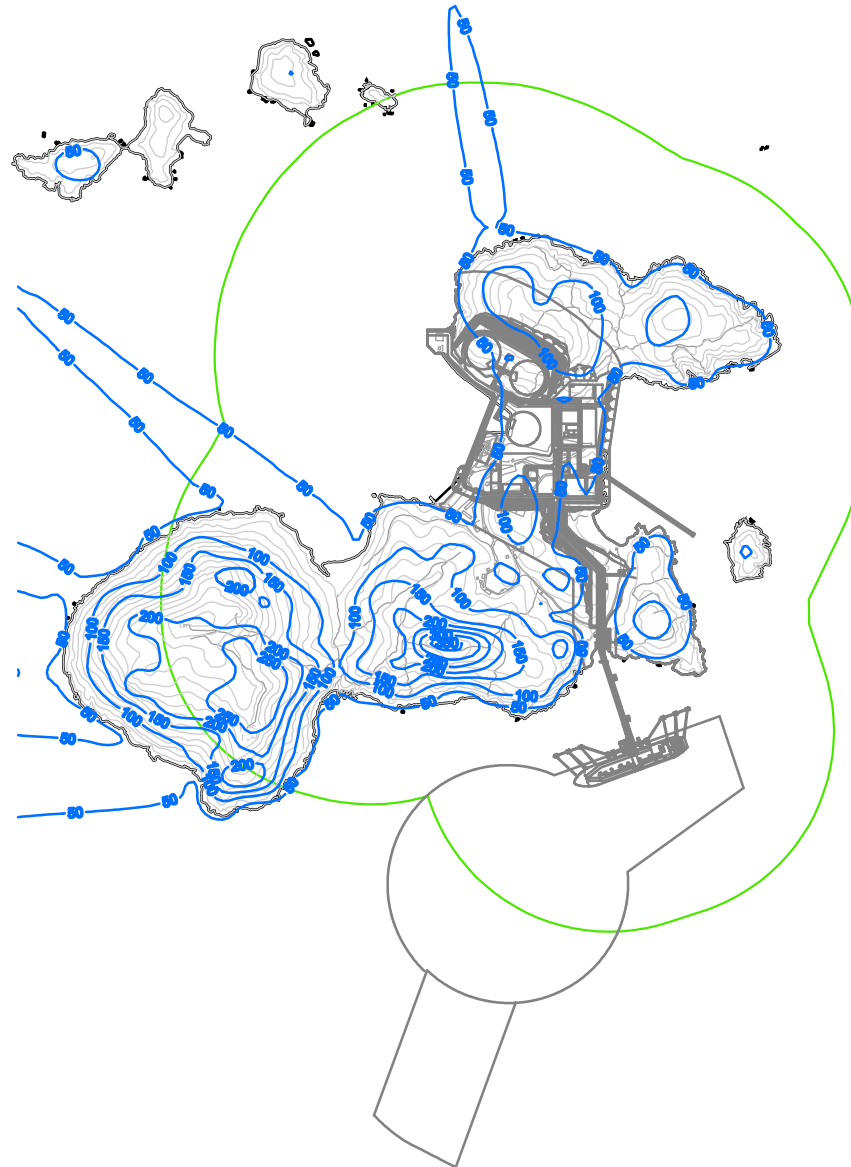



Figure 4.11

Isopleths of Cumulative Daily Average SO₂ at 1.5m Above Ground
(Emissions from LNG Terminal + TC AQMS Background)

Key

 500m Study Area

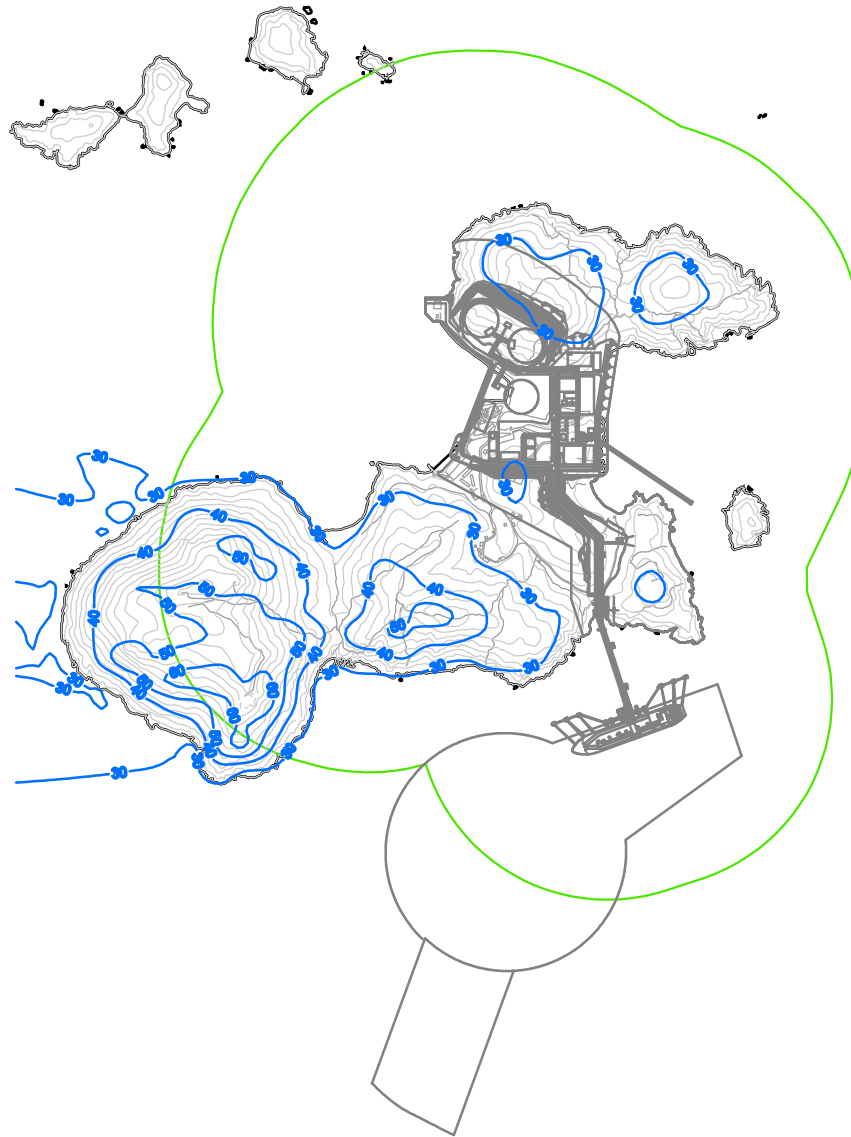


Figure 4.12


Isopleths of Cumulative Annual Average SO₂ at 1.5m Above Ground
(Emissions from LNG Terminal + TC AQMS Background)

File: Report_August/0018180_Air_SO2_GDA_SK_1.mxd
Date: 07/12/2006

**Environmental
Resources
Management**



Key

 500m Study Area

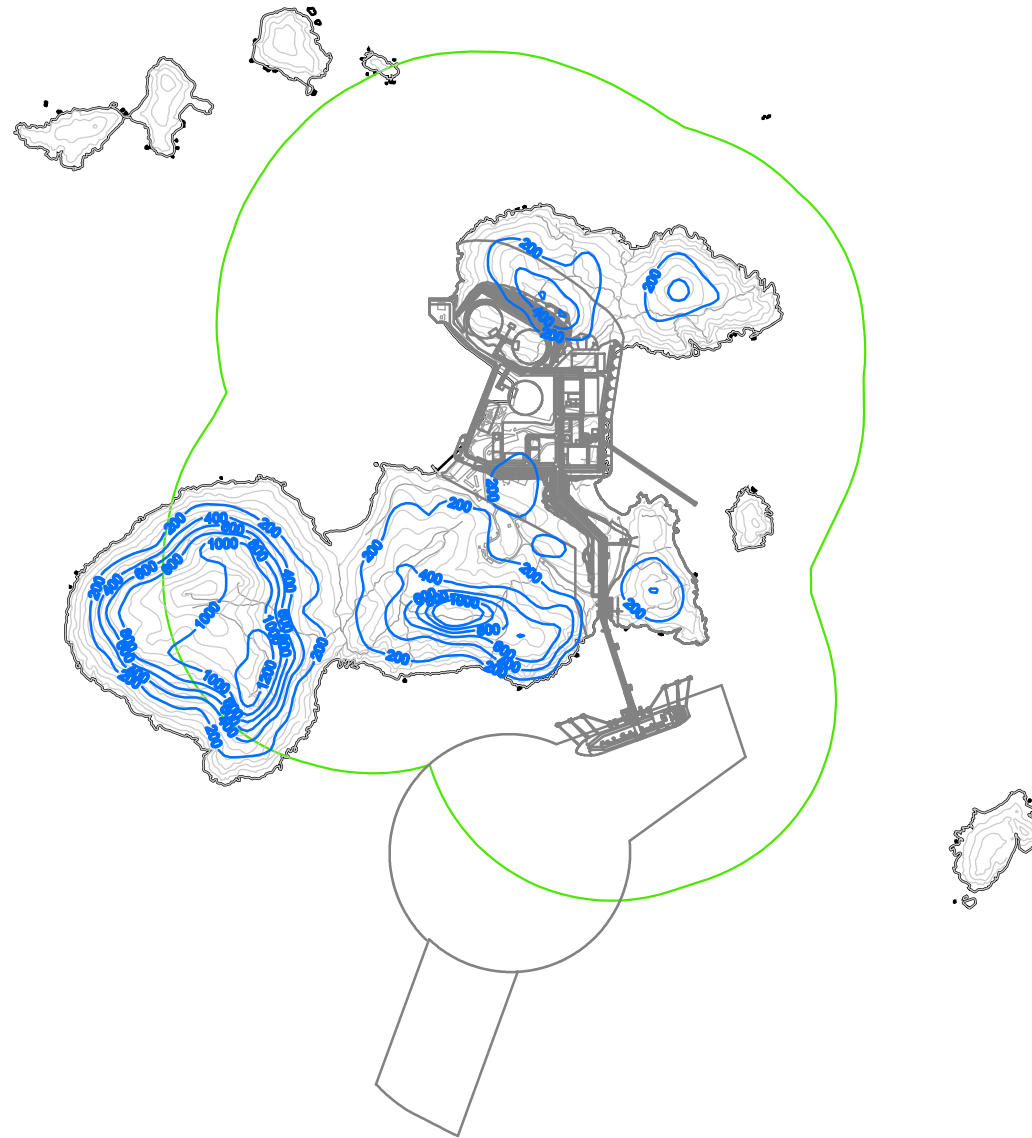


Figure 4.13

Isopleths of Cumulative Maximum Hourly SO₂ at 10m Above Ground
(Emissions from LNG Terminal + TC AQMS Background)

File: Report_August/0018180_Air_SO2_10h_SK_1.mxd
Date: 05/12/2006

**Environmental
Resources
Management**



Key

 500m Study Area

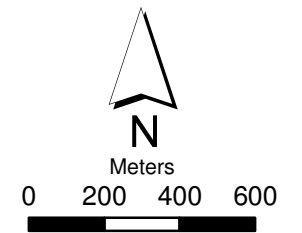
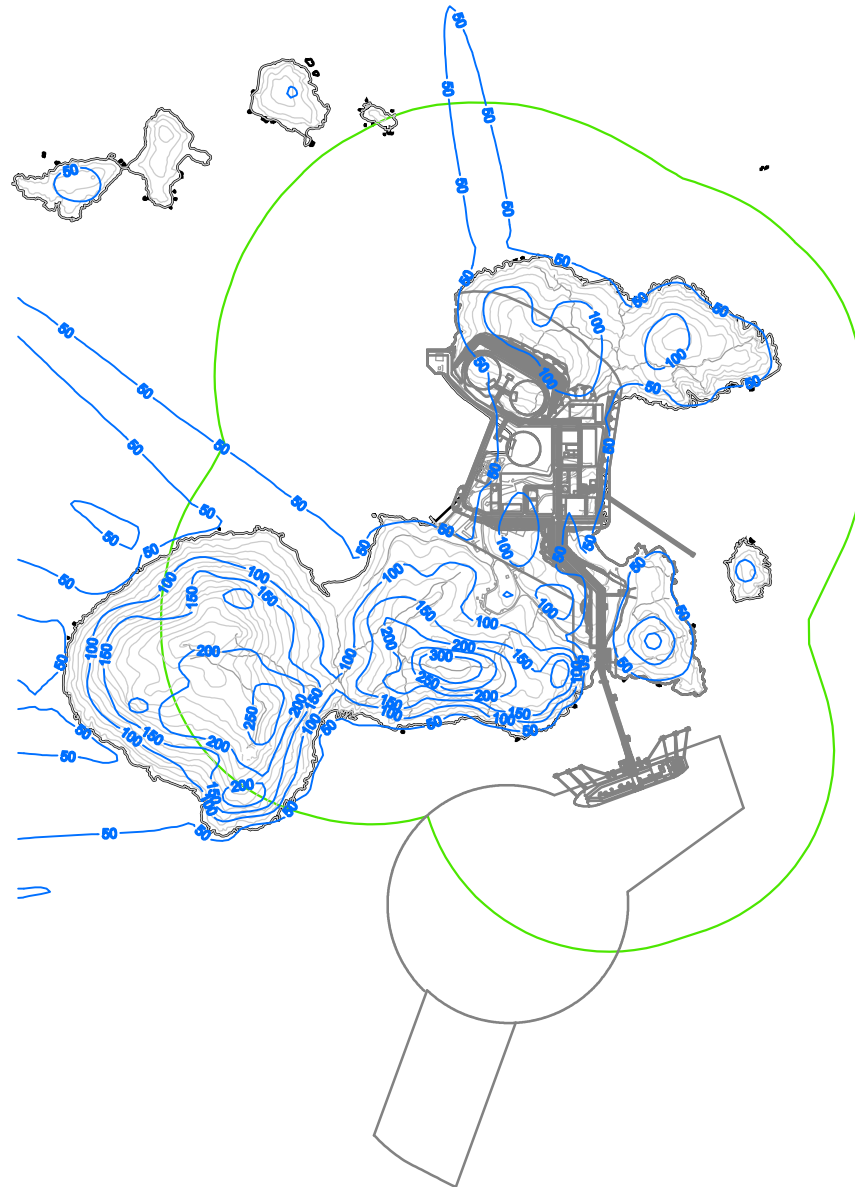



Figure 4.14

Isopleths of Cumulative Daily Average SO₂ at 10m Above Ground
(Emissions from LNG Terminal + TC AQMS Background)

Key

 500m Study Area

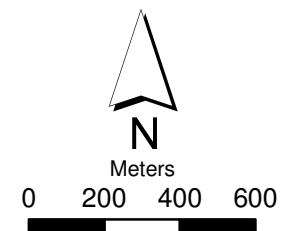
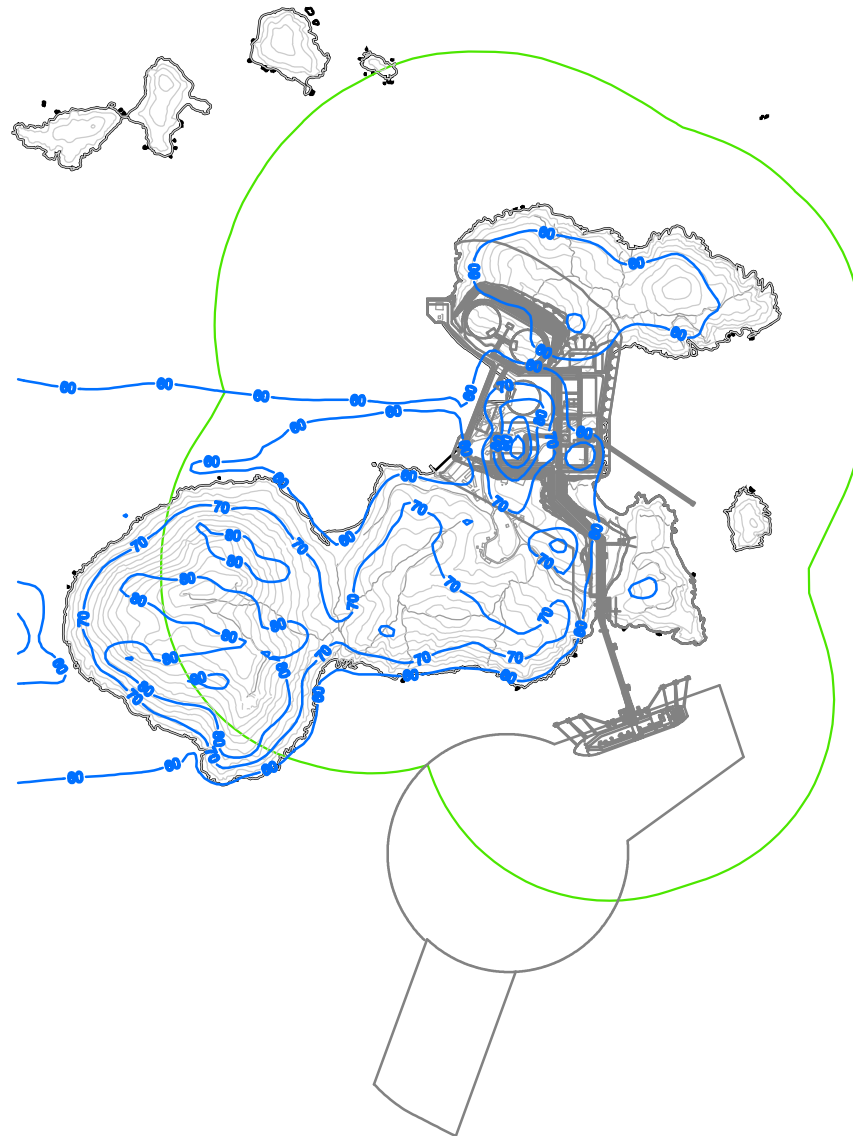


Figure 4.15

Isopleths of Cumulative Annual Average SO₂ at 10m Above Ground
(Emissions from LNG Terminal + TC AQMS Background)

File: Report_August/0018180_Air_SO2_10a_SK_2.mxd
Date: 11/12/2006

**Environmental
Resources
Management**

