

Figure 4.9

Isopleths of Cumulative Maximum Hourly NO<sub>2</sub> at 1.5m Above Ground  
 (Emissions from LNG Terminal + BPPS + TC AQMS Background)

File: Report\_August/0018180\_Air\_NO2\_GDHC\_BP\_1.mxd  
 Date: 06/12/2006

Environmental  
 Resources  
 Management





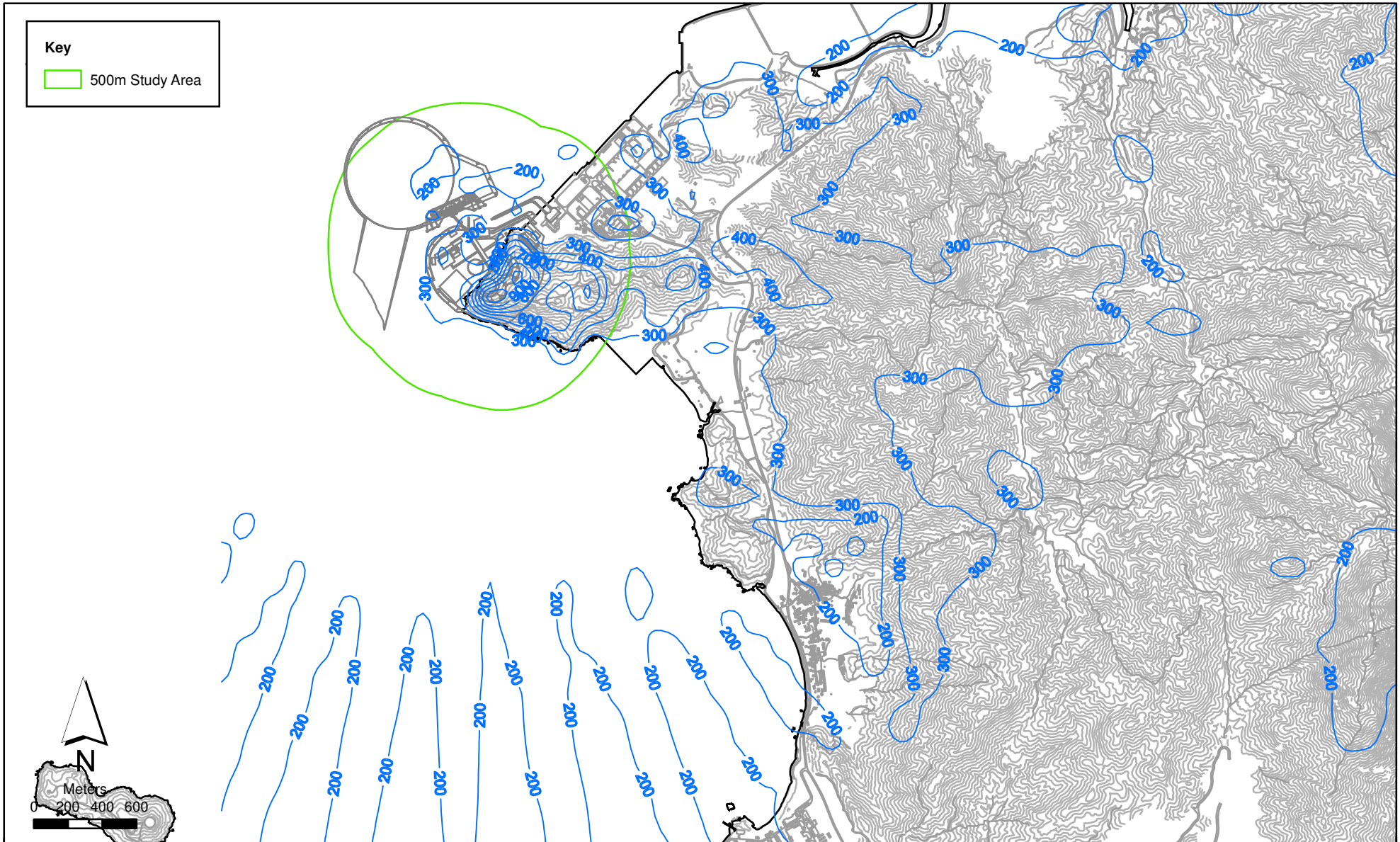


Figure 4.10

Isopleths of Cumulative Maximum Hourly NO<sub>2</sub> at 10m Above Ground  
 (Emissions from LNG Terminal + BPPS + TC AQMS Background)

File: Report\_August/0018180\_Air\_NO2\_10HC\_BP\_1.mxd  
 Date: 06/12/2006

Environmental  
 Resources  
 Management





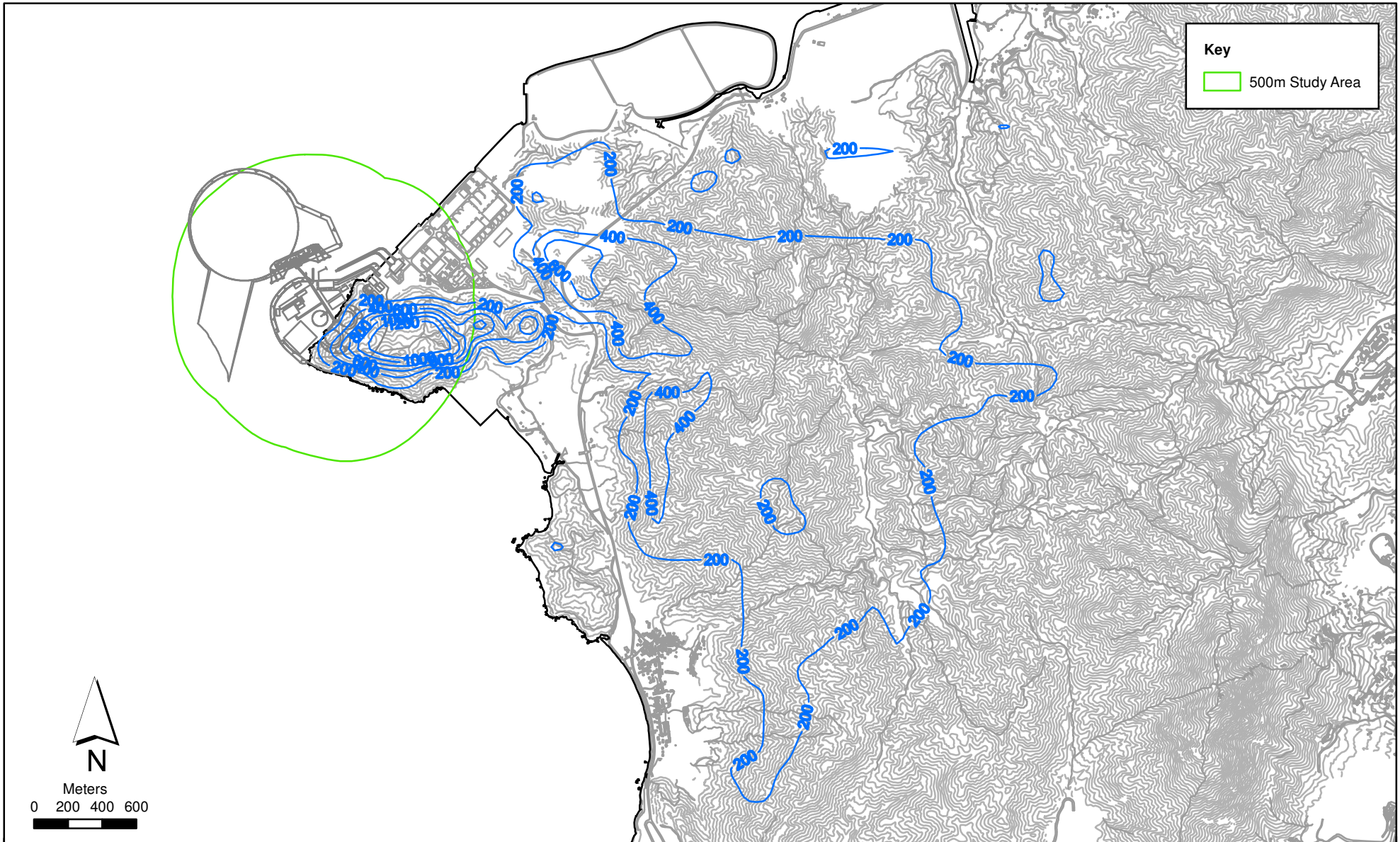


Figure 4.11

Isopleths of Cumulative Maximum Hourly SO2 at 1.5m Above Ground  
(Emissions from LNG Terminal + TC AQMS Background)

File: Report\_August/0018180\_Air\_SO2\_GDH\_BP\_1.mxd  
Date: 07/12/2006

Environmental  
Resources  
Management





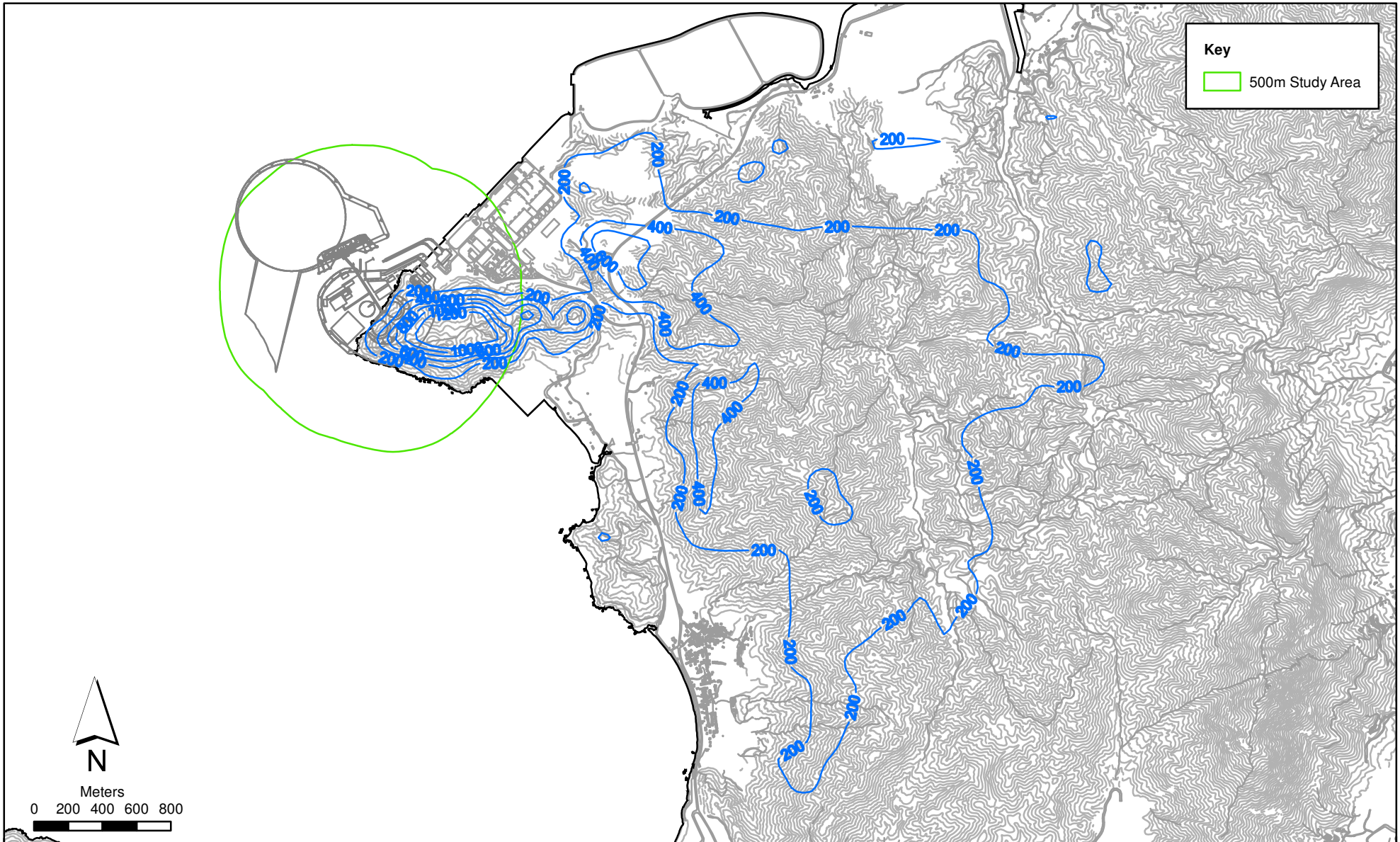


Figure 4.12

Isopleths of Cumulative Maximum Hourly SO<sub>2</sub> at 10m Above Ground  
(Emissions from LNG Terminal + TC AQMS Background)

File: Report\_August/0018180\_Air\_SO2\_10h\_BP\_1.mxd  
Date: 07/12/2006

Environmental  
Resources  
Management

