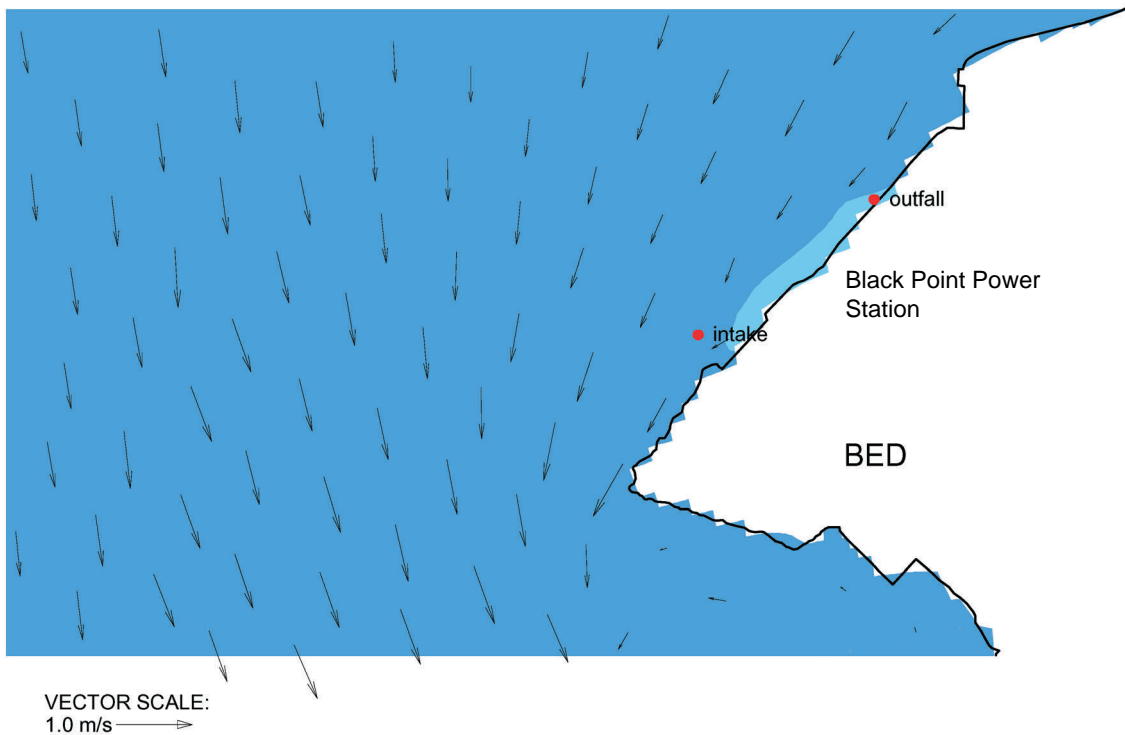
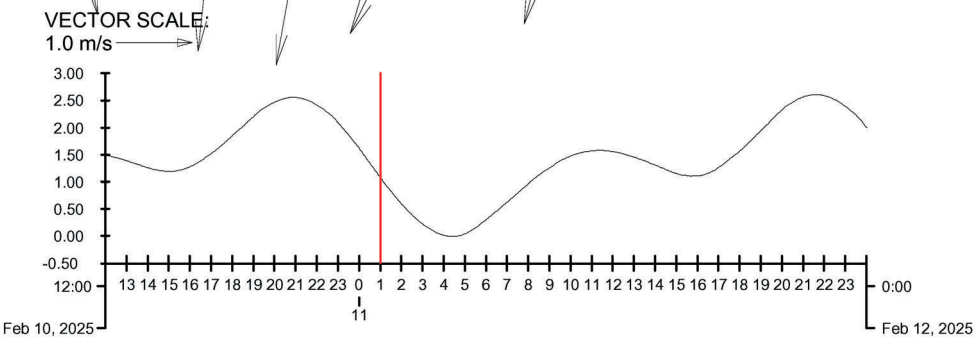
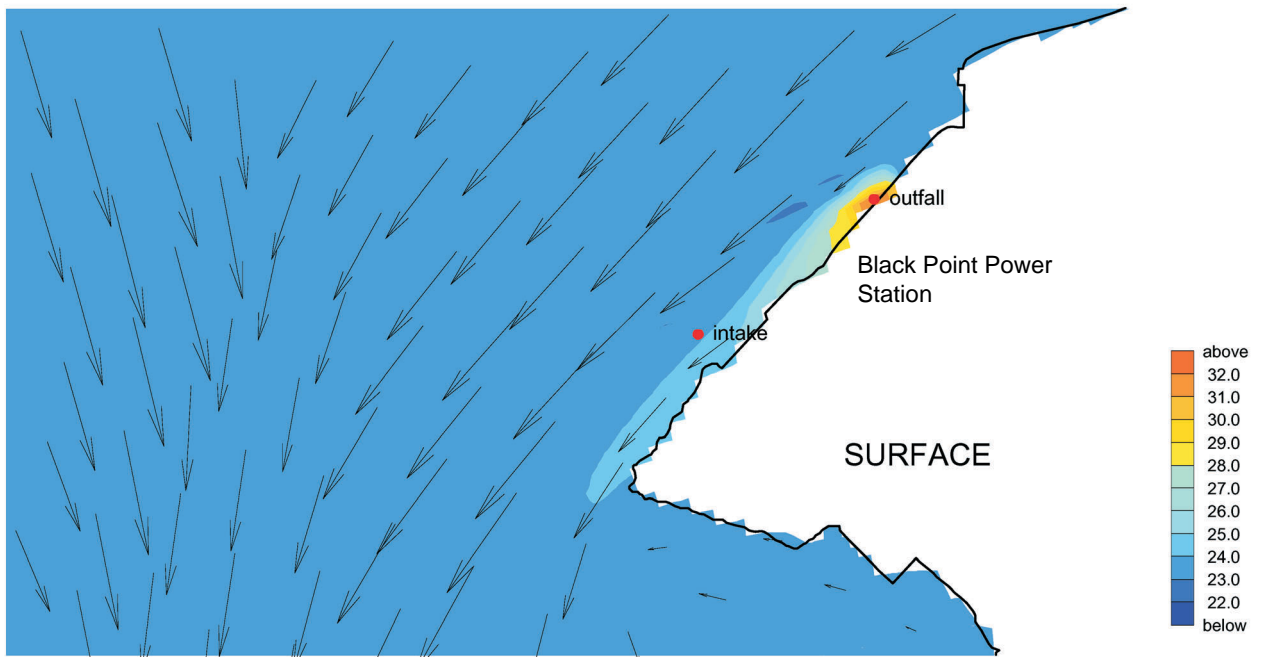
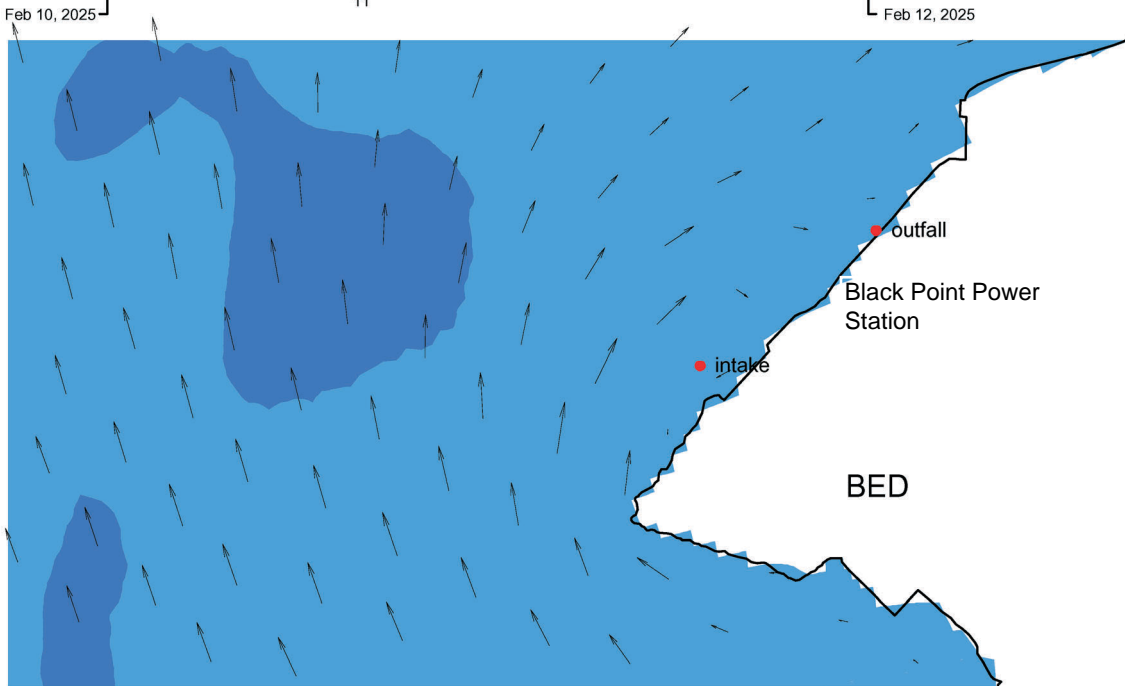
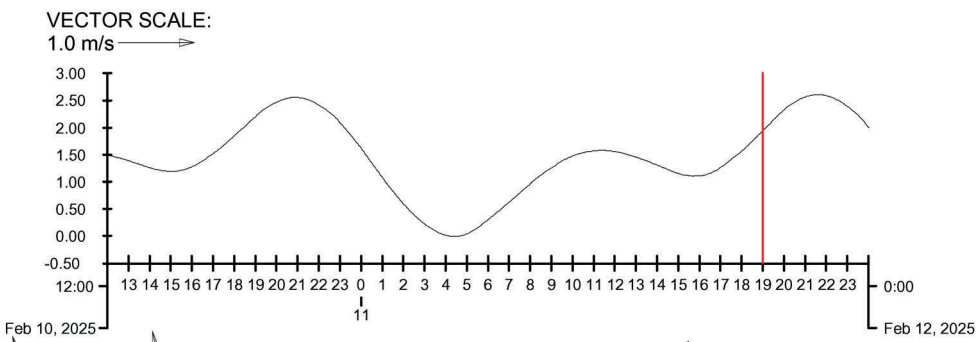
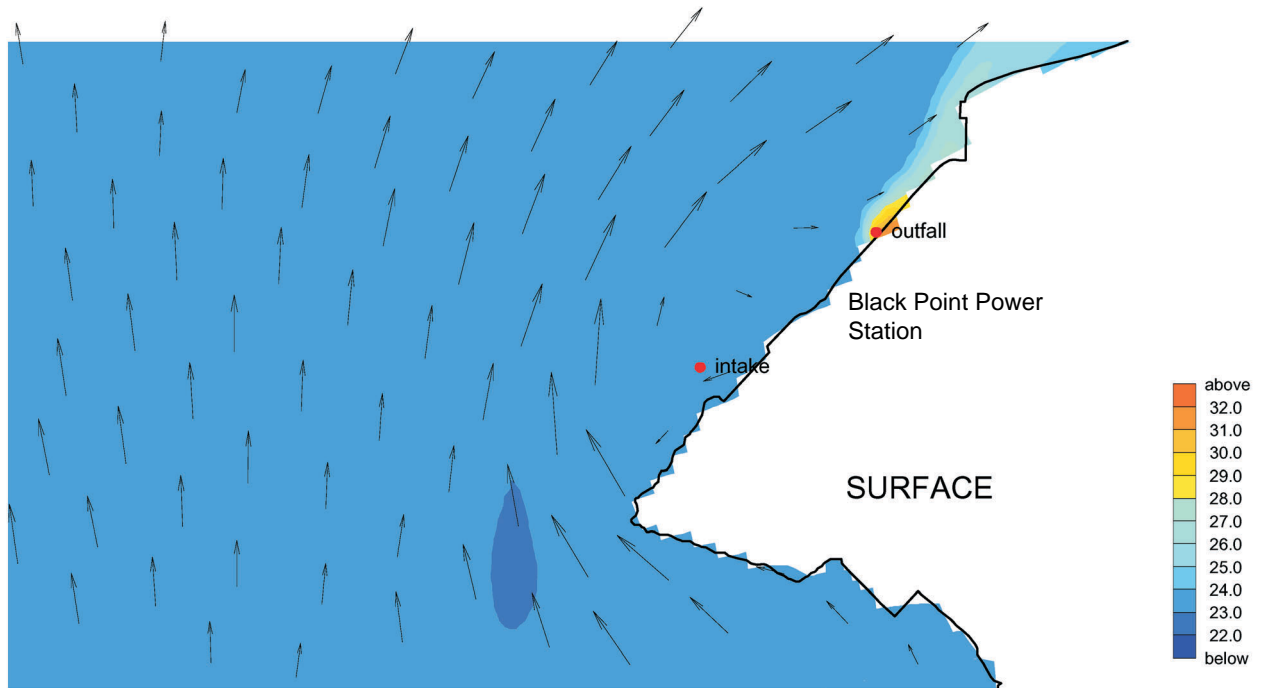


Annex 6B

# Construction Phase Model Results - Hydrodynamics



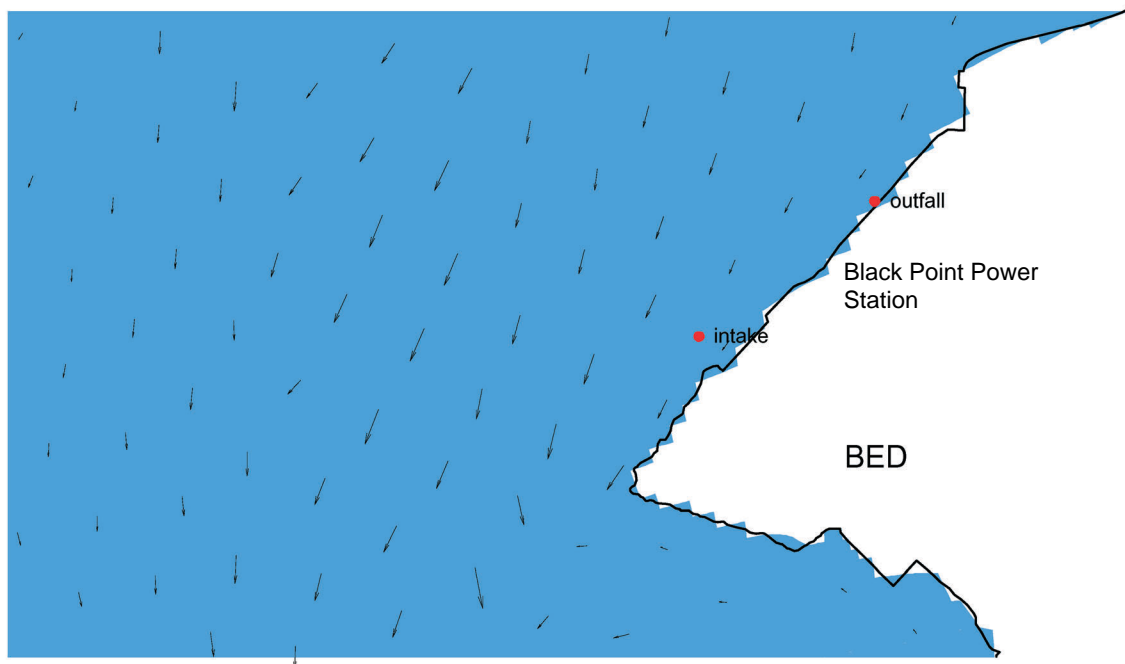
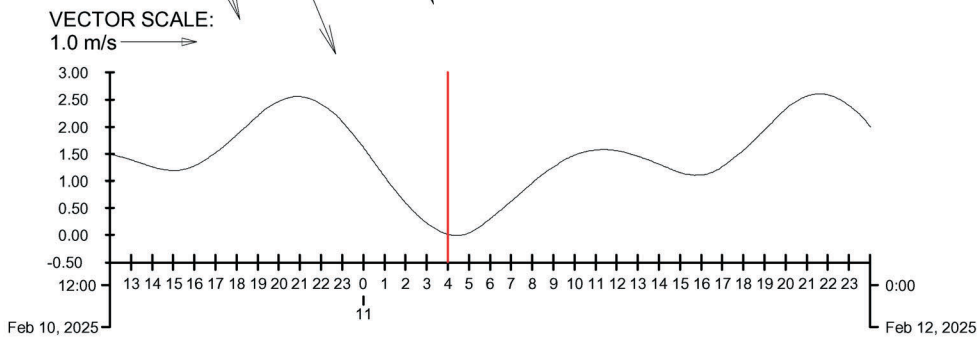
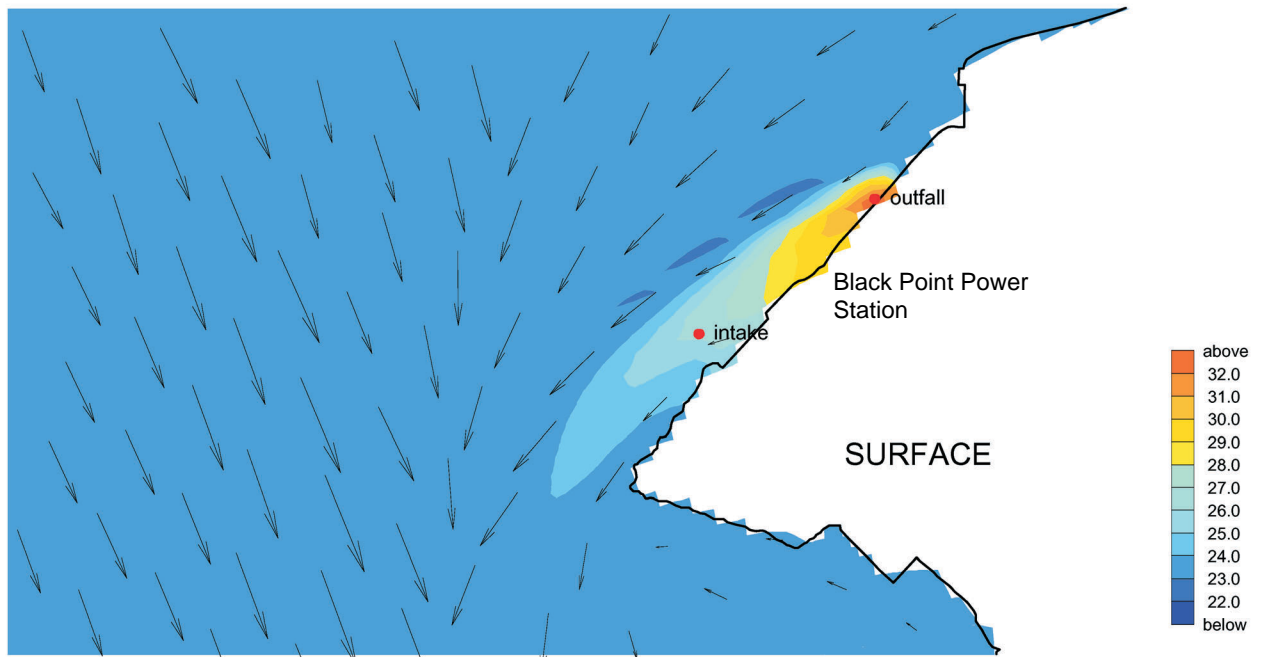
|  |               |             |
|--|---------------|-------------|
| Velocity Vector (m/s) and Temperature (Degree Celsius) |               |             |
| Dry Season, Mid-ebb, Surface (upper) & Bottom (lower)  | Black Point   |             |
| Pre-project situation, 2007                            | 0018180_eia63 | Fig. BP_B01 |
| <b>WL   delft hydraulics</b>                           |               |             |



VECTOR SCALE:  
1.0 m/s →

Velocity Vector (m/s) and Temperature (Degree Celsius)  
 Dry Season, Mid-flood, Surface (upper) & Bottom (lower)  
 Pre-project situation, 2007

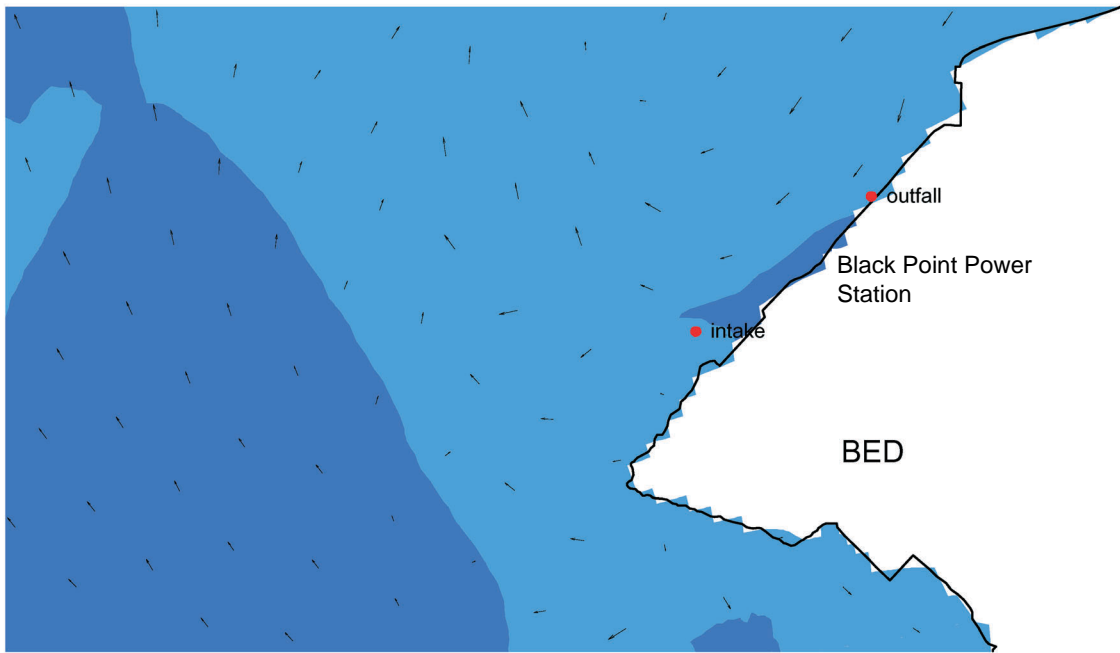
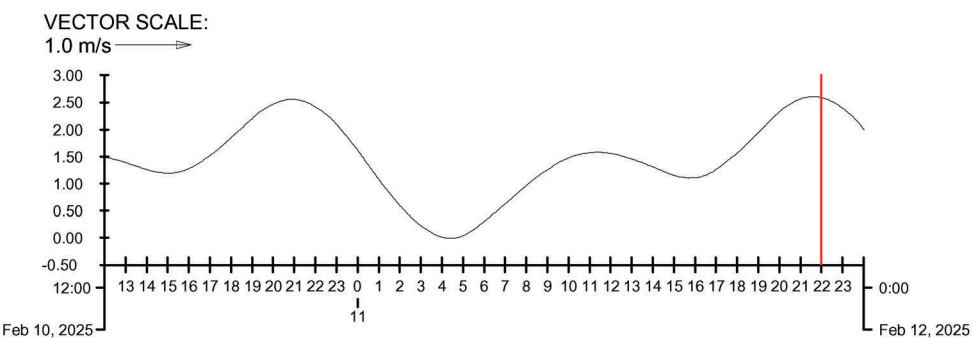
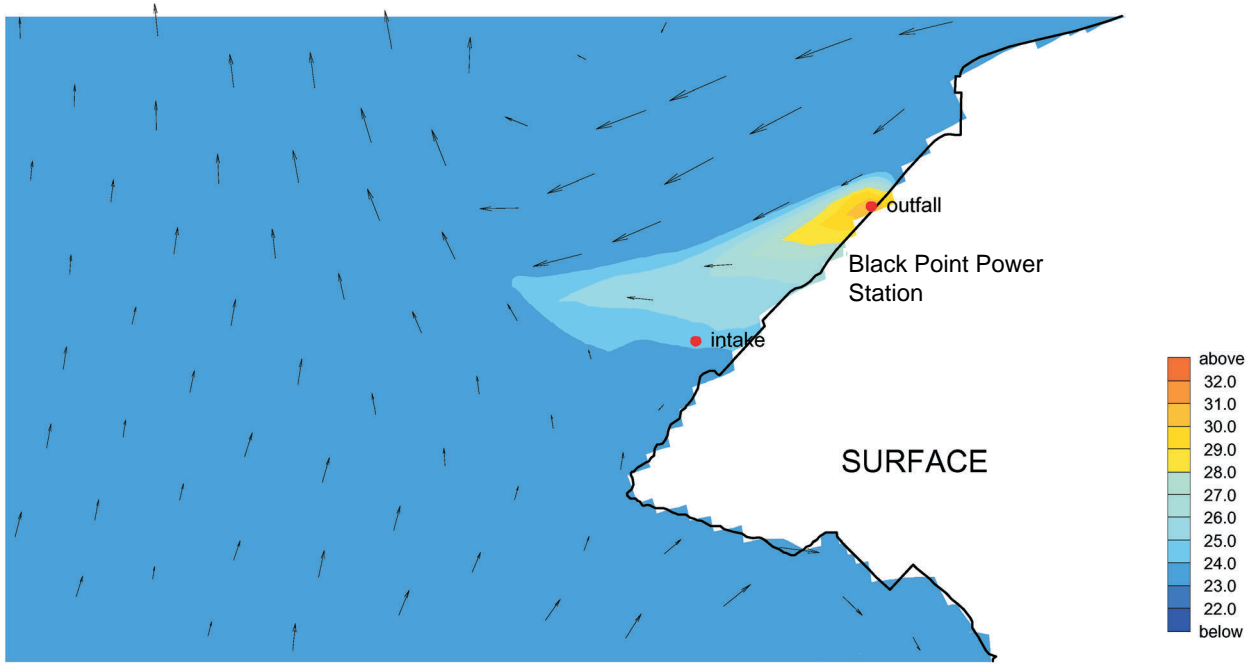
Black Point



VECTOR SCALE:  
1.0 m/s →

Velocity Vector (m/s) and Temperature (Degree Celsius)  
 Dry Season, Low Water, Surface (upper) & Bottom (lower)  
 Pre-project situation, 2007

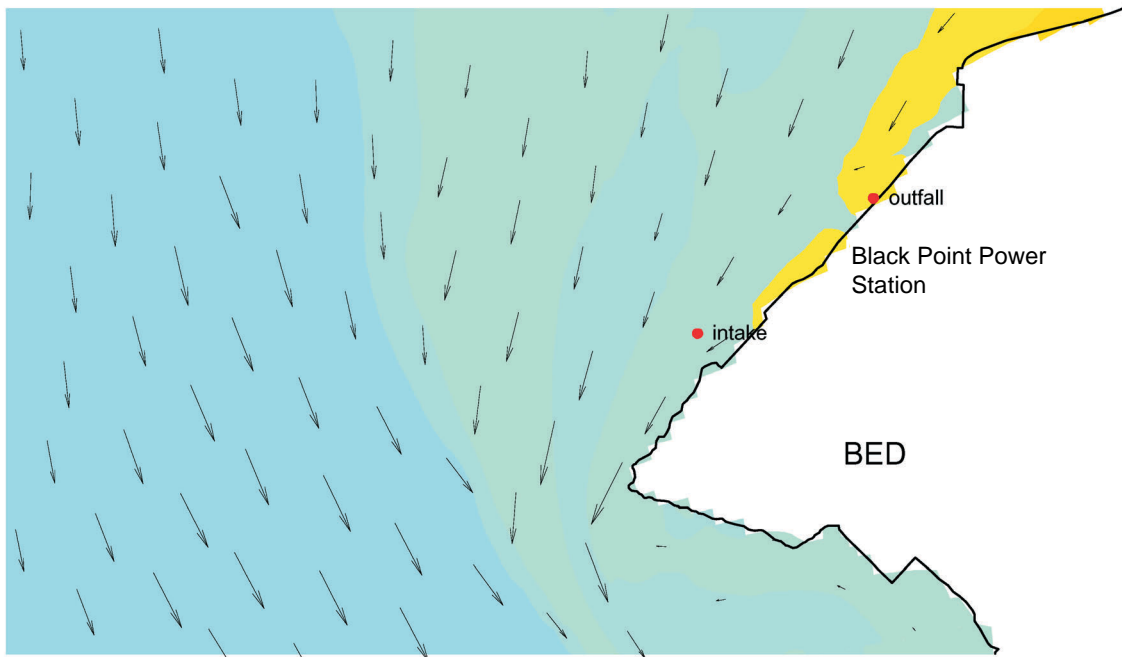
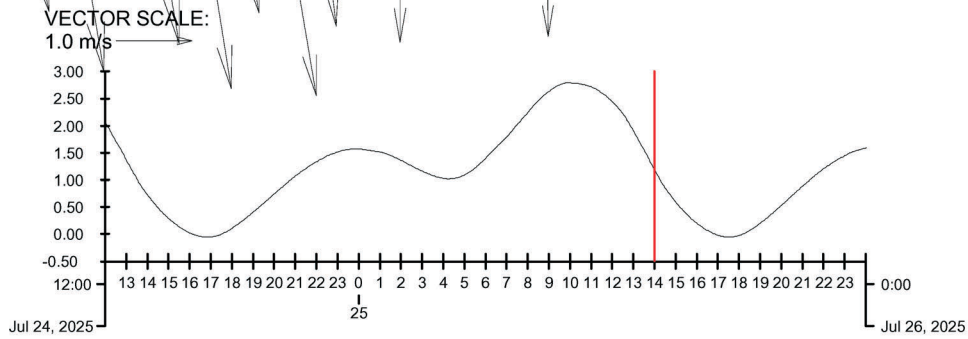
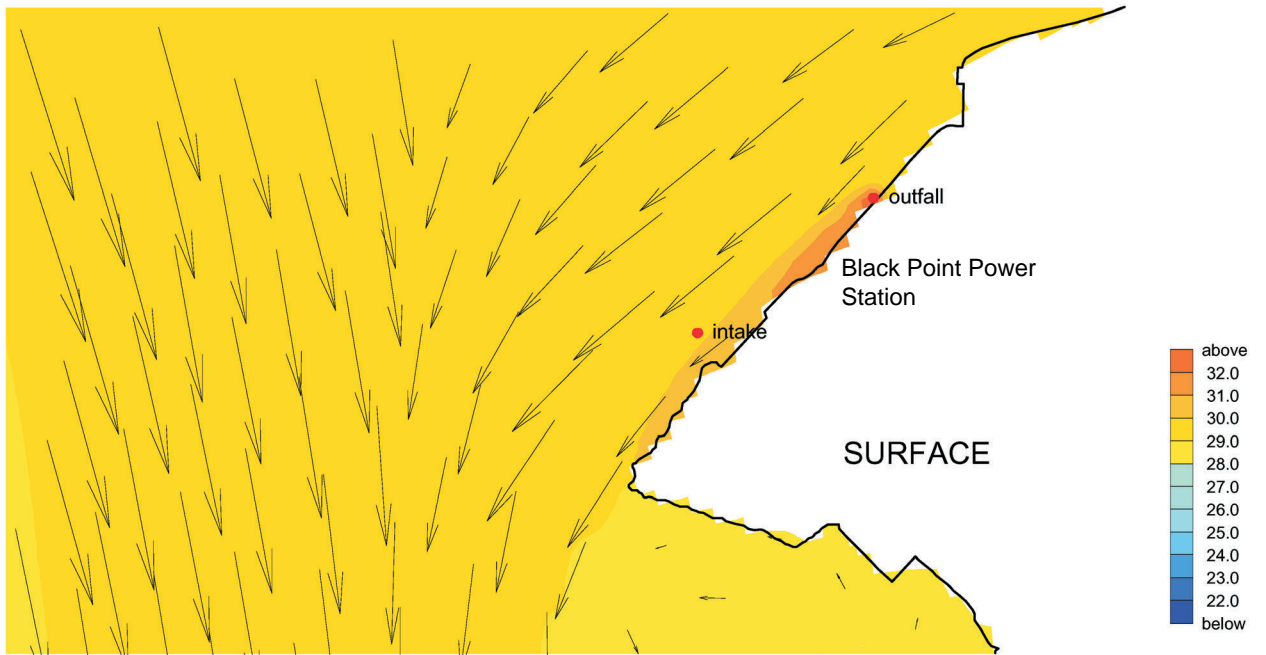
Black Point



VECTOR SCALE: 1.0 m/s →

Velocity Vector (m/s) and Temperature (Degree Celsius)  
 Dry Season, High Water, Surface (upper) & Bottom (lower)  
 Pre-project situation, 2007

Black Point



VECTOR SCALE:  
1.0 m/s

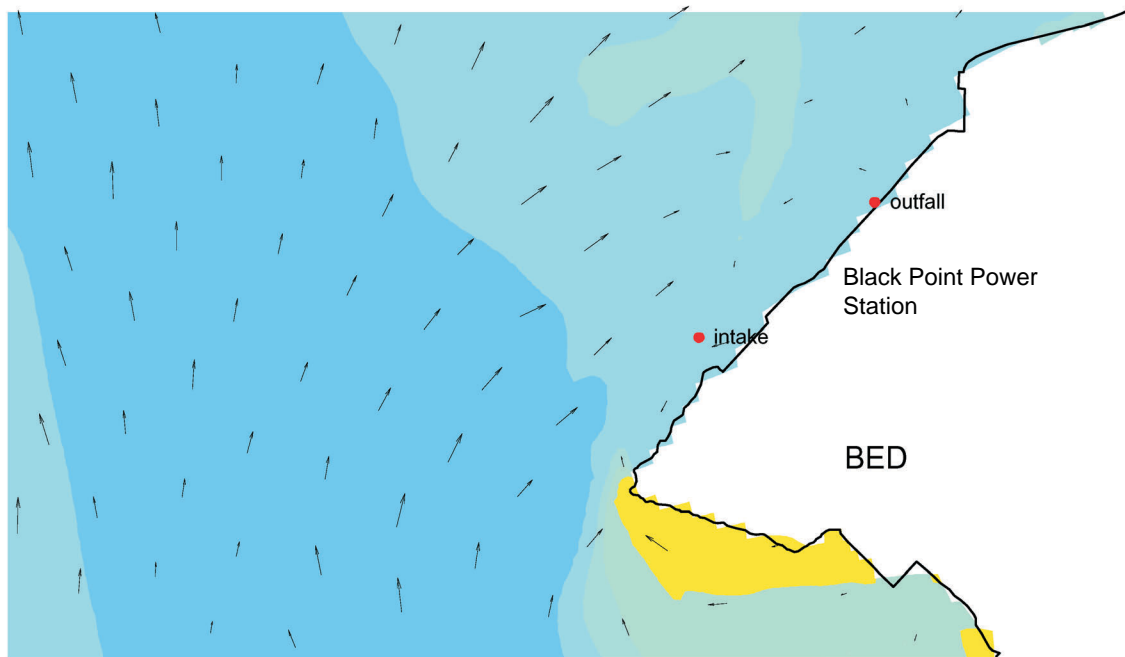
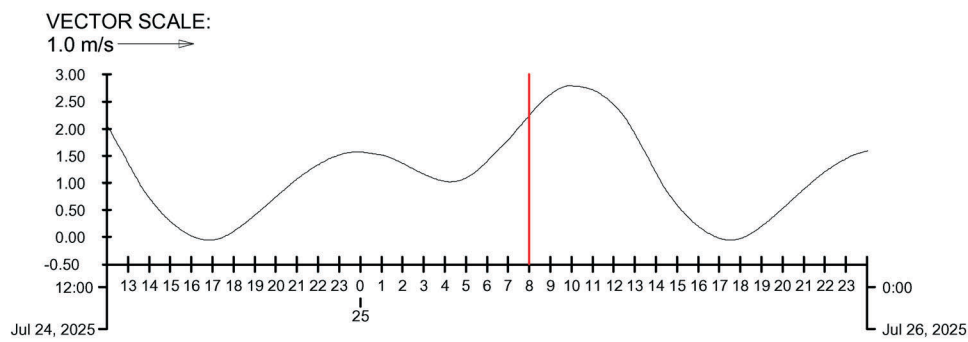
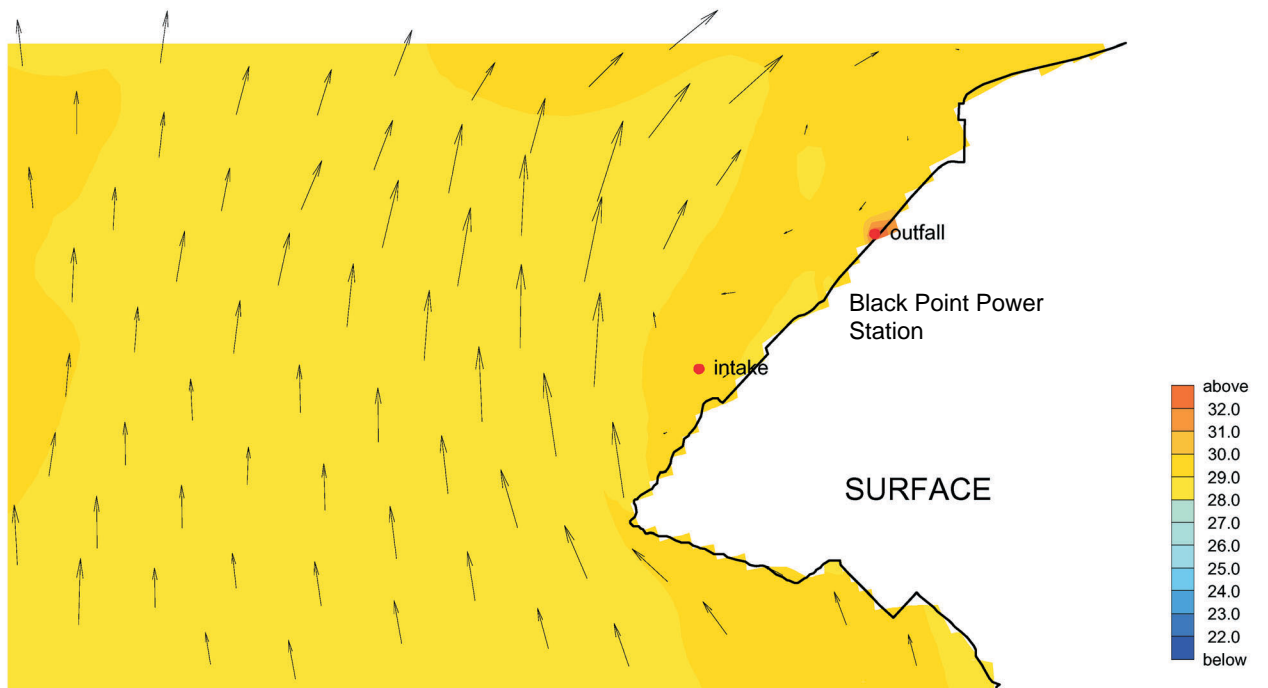
Velocity Vector (m/s) and Temperature (Degree Celsius)  
Wet Season, Mid-ebb, Surface (upper) & Bottom (lower)  
Pre-project situation, 2007

Black Point

WL | delft hydraulics

0018180\_eia63d

Fig. BP\_B05



VECTOR SCALE:  
1.0 m/s

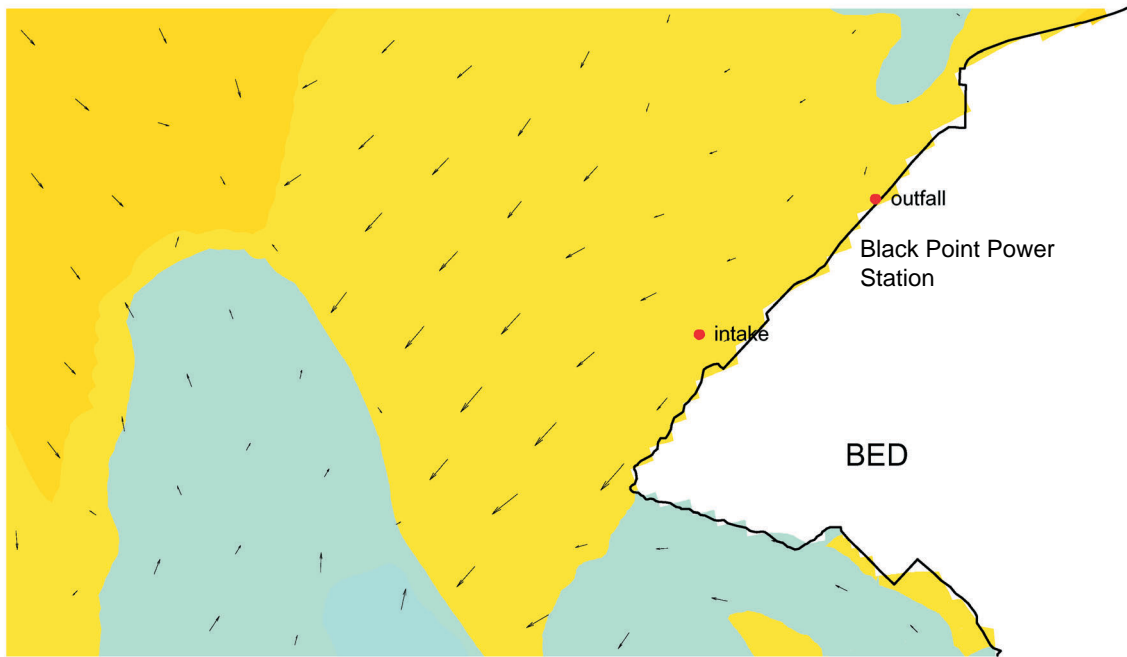
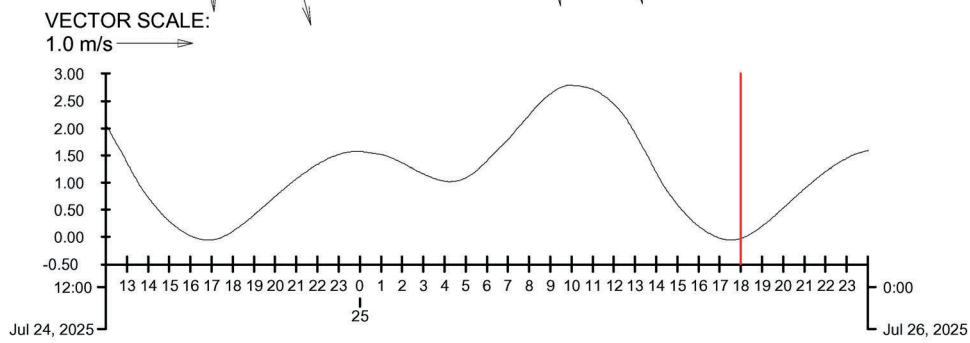
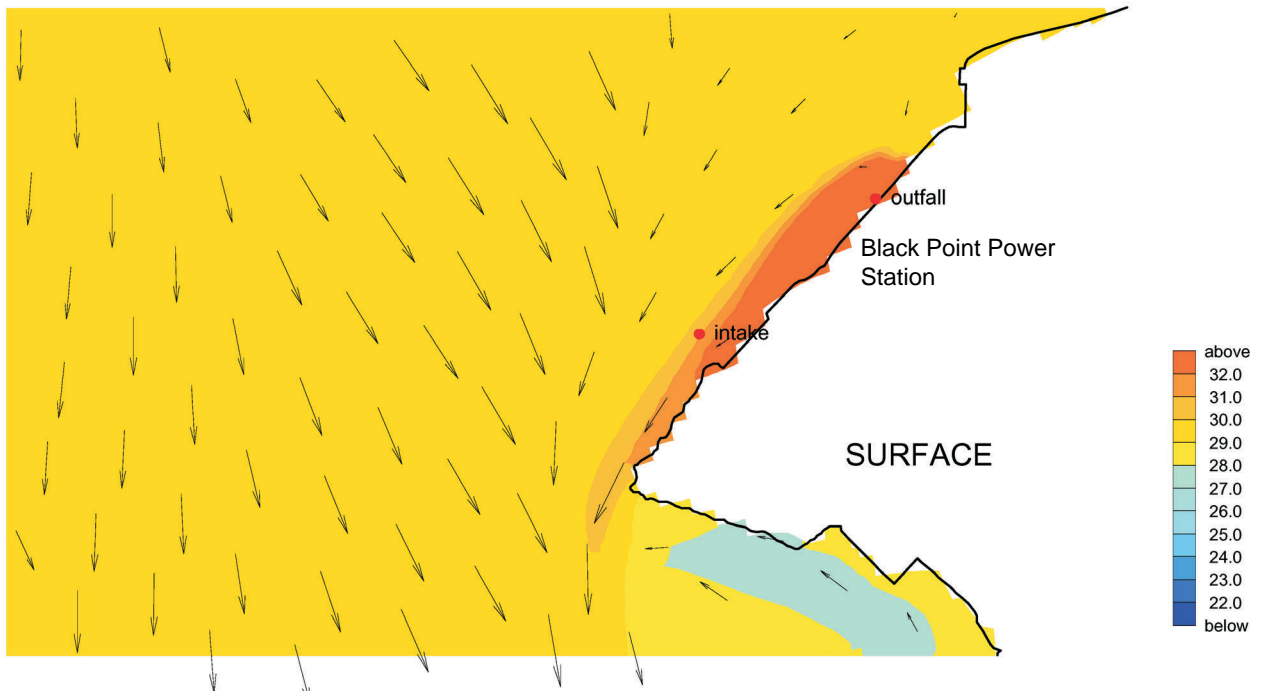
Velocity Vector (m/s) and Temperature (Degree Celsius)  
Wet Season, Mid-flood, Surface (upper) & Bottom (lower)  
Pre-project situation, 2007

Black Point

WL | delft hydraulics

0018180\_eia63e

Fig. BP\_B06

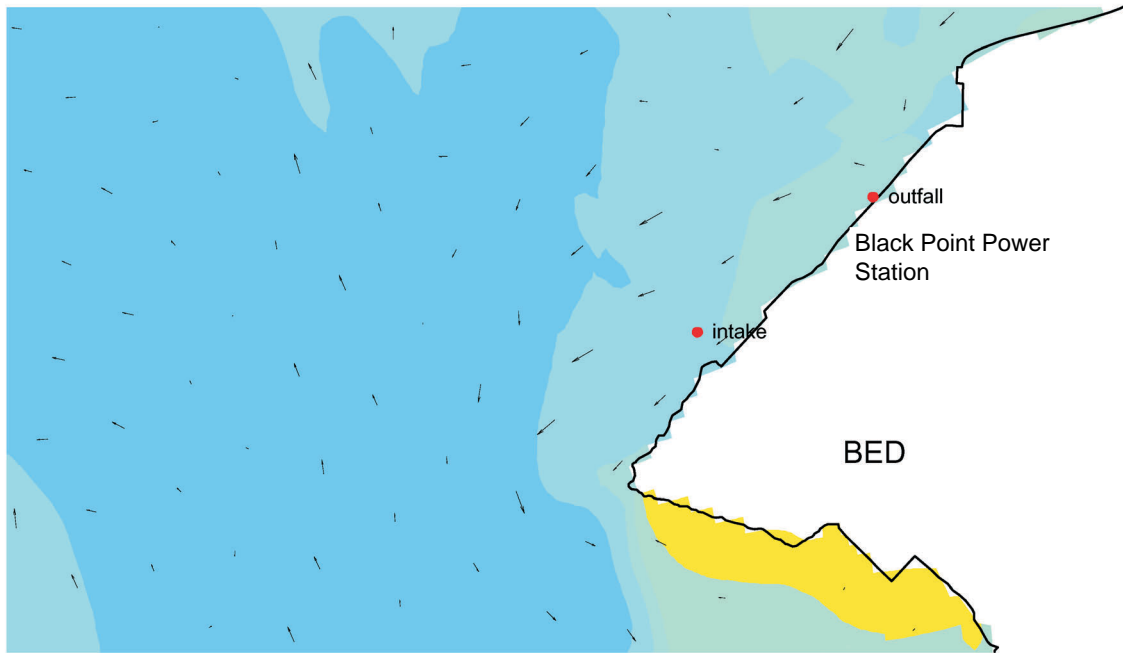
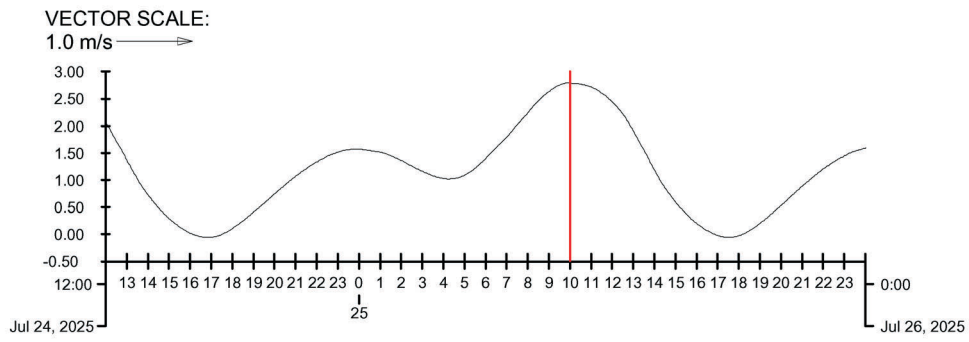
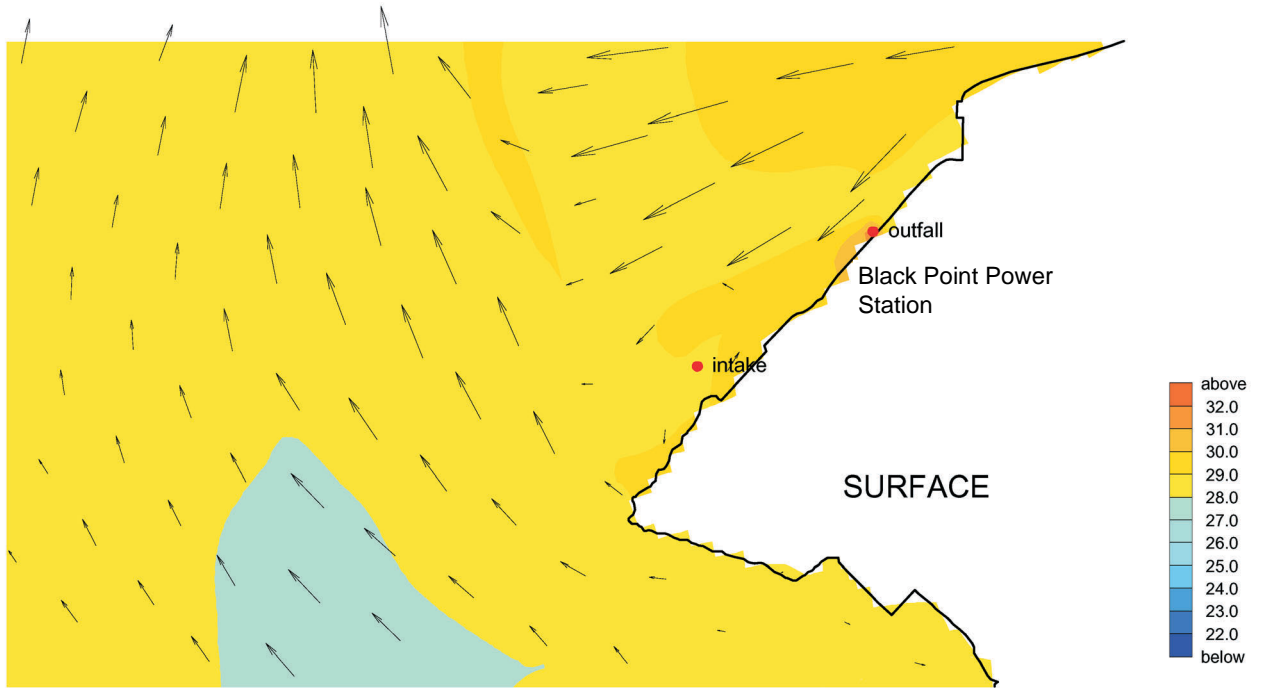


VECTOR SCALE:  
1.0 m/s →

Velocity Vector (m/s) and Temperature (Degree Celsius)  
Wet Season, Low Water, Surface (upper) & Bottom (lower)  
Pre-project situation, 2007

Black Point





**VECTOR SCALE:**  
1.0 m/s →

Velocity Vector (m/s) and Temperature (Degree Celsius)  
Wet Season, High Water, Surface (upper) & Bottom (lower)  
Pre-project situation, 2007

Black Point