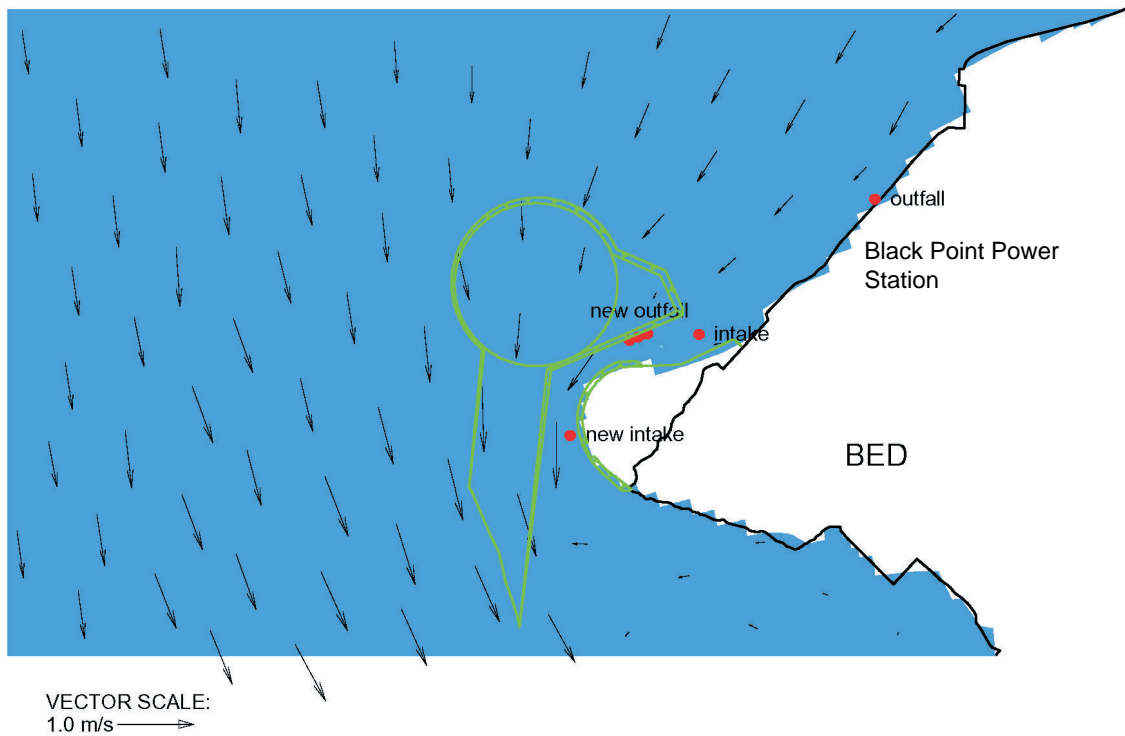
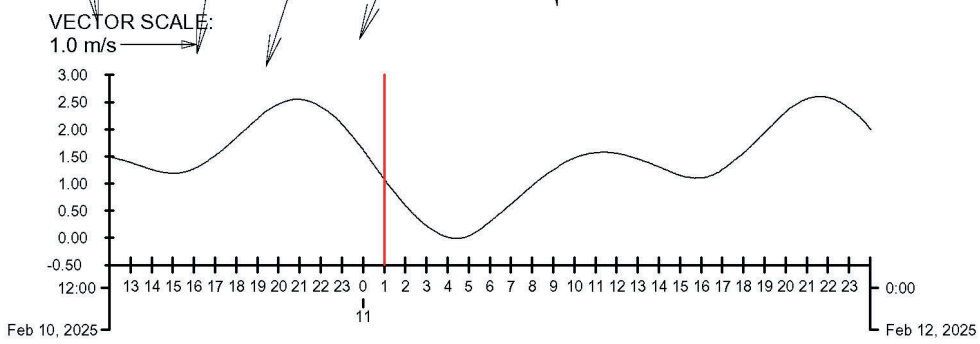
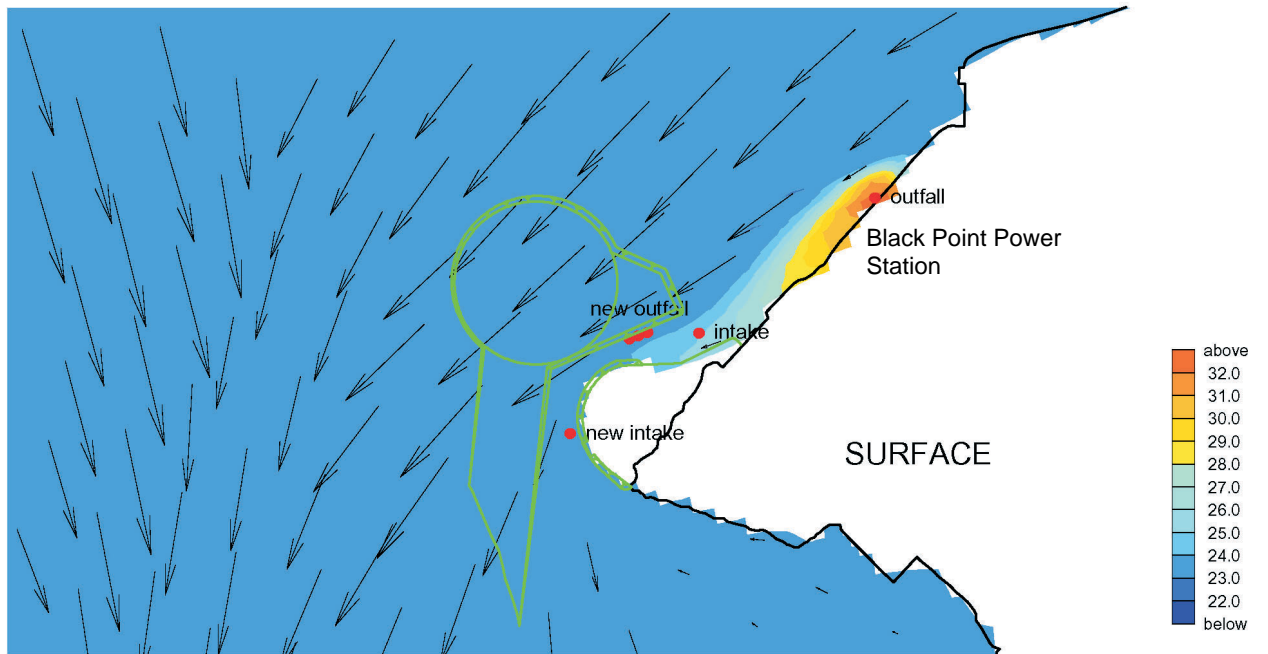


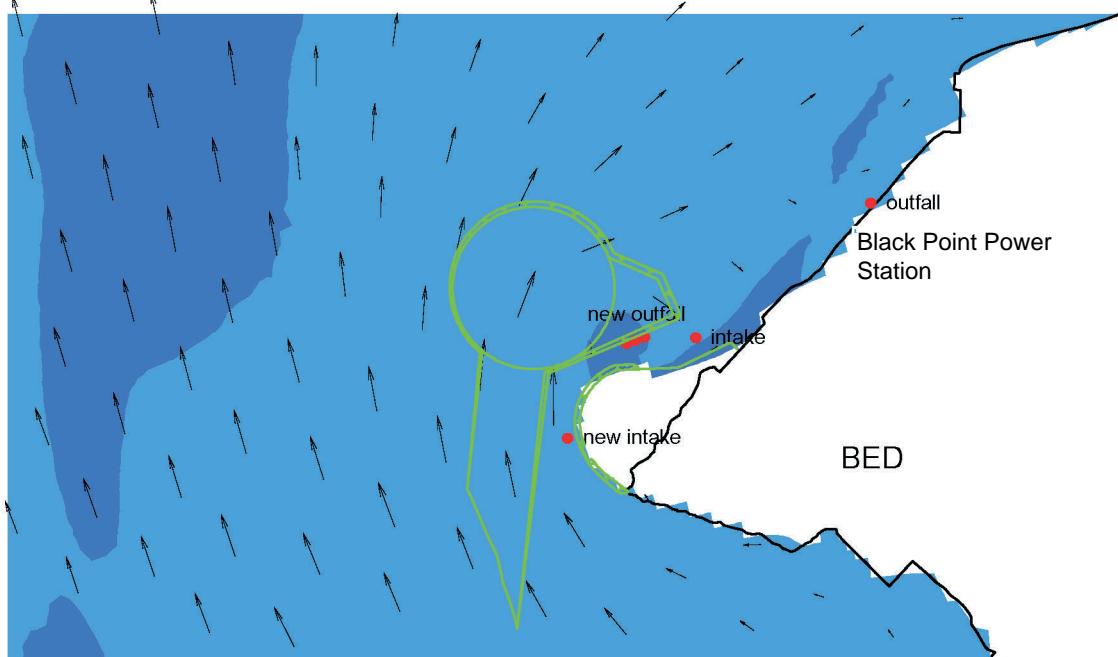
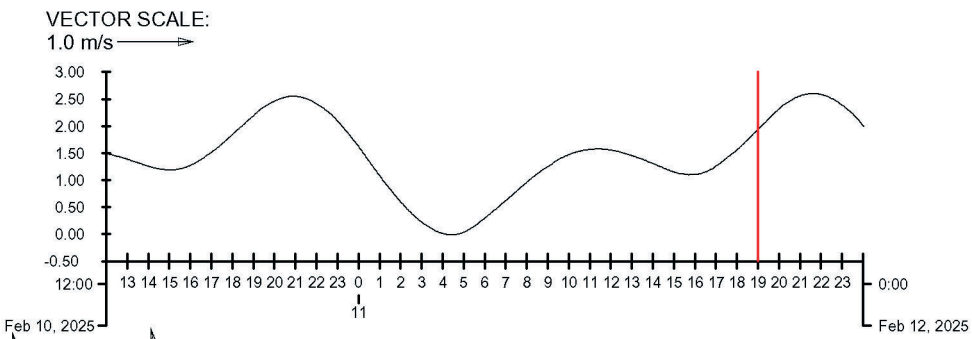
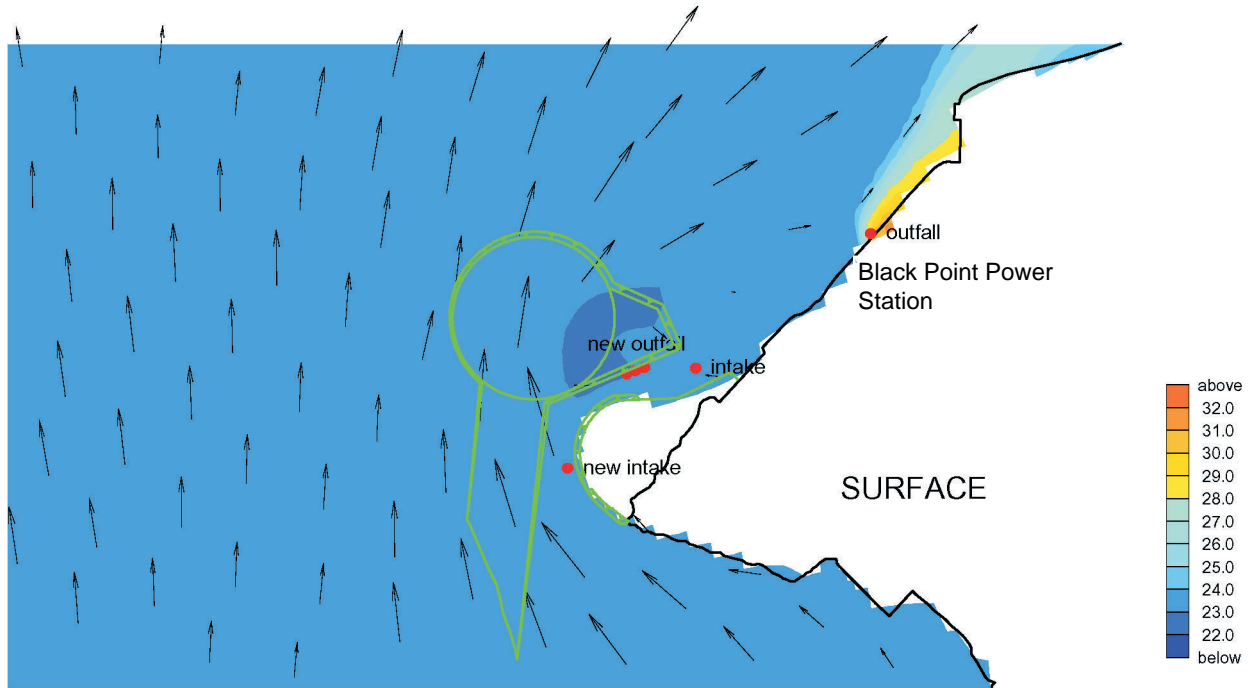
Annex 6F

Operational Phase Model Results - Hydrodynamicis



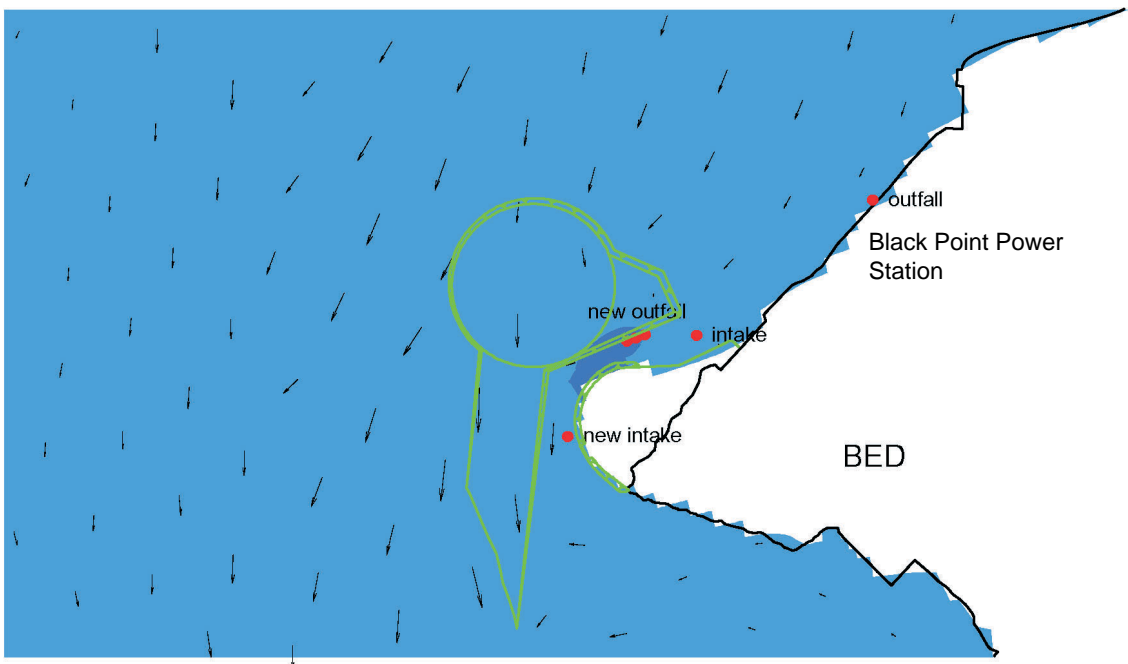
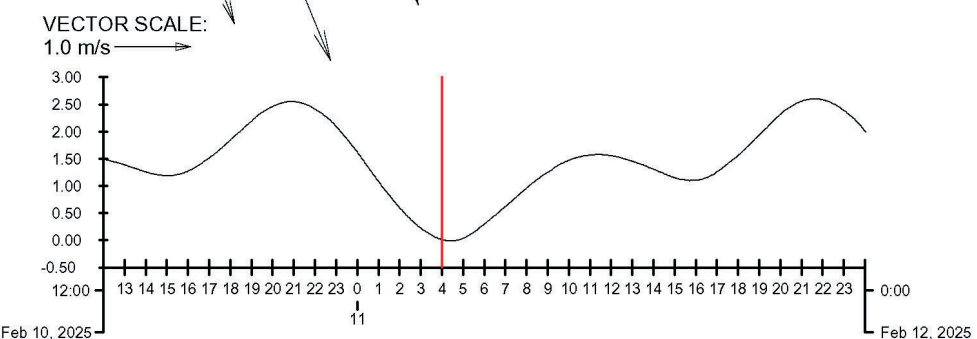
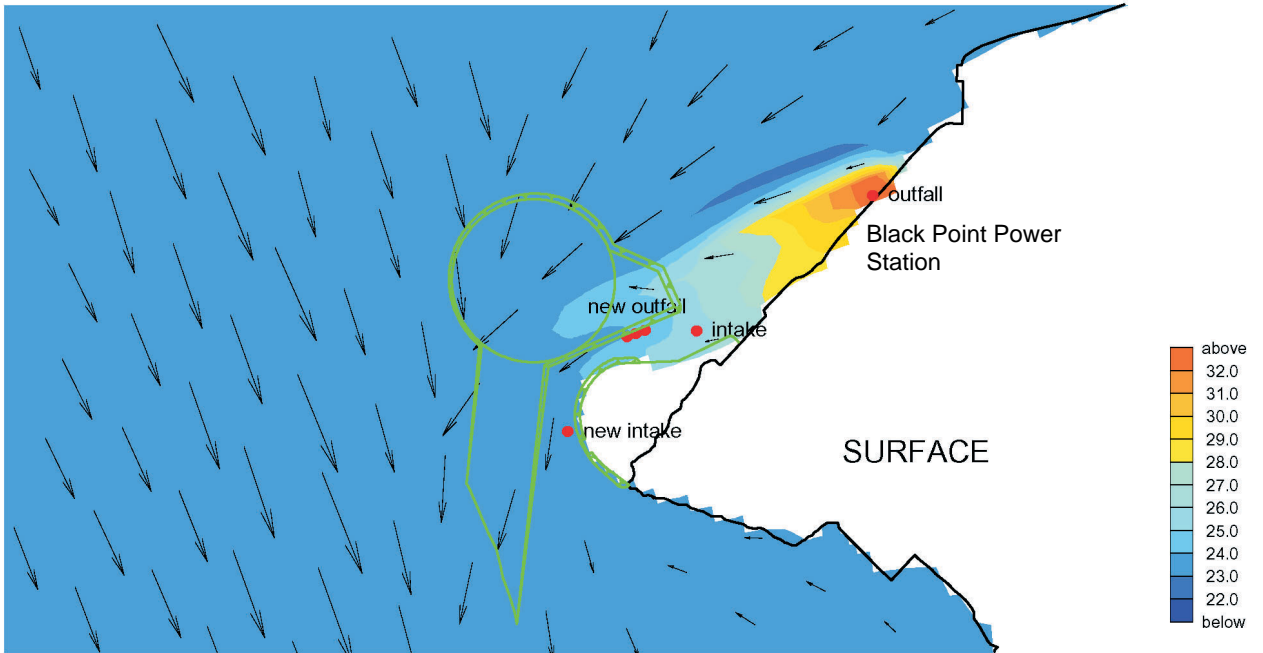
Velocity Vector (m/s) and Temperature (Degree Celsius)
 Dry Season, Mid-ebb, Surface (upper) & Bottom (lower)
 Maximum project related discharges, 2011

Black Point



VECTOR SCALE:
1.0 m/s →

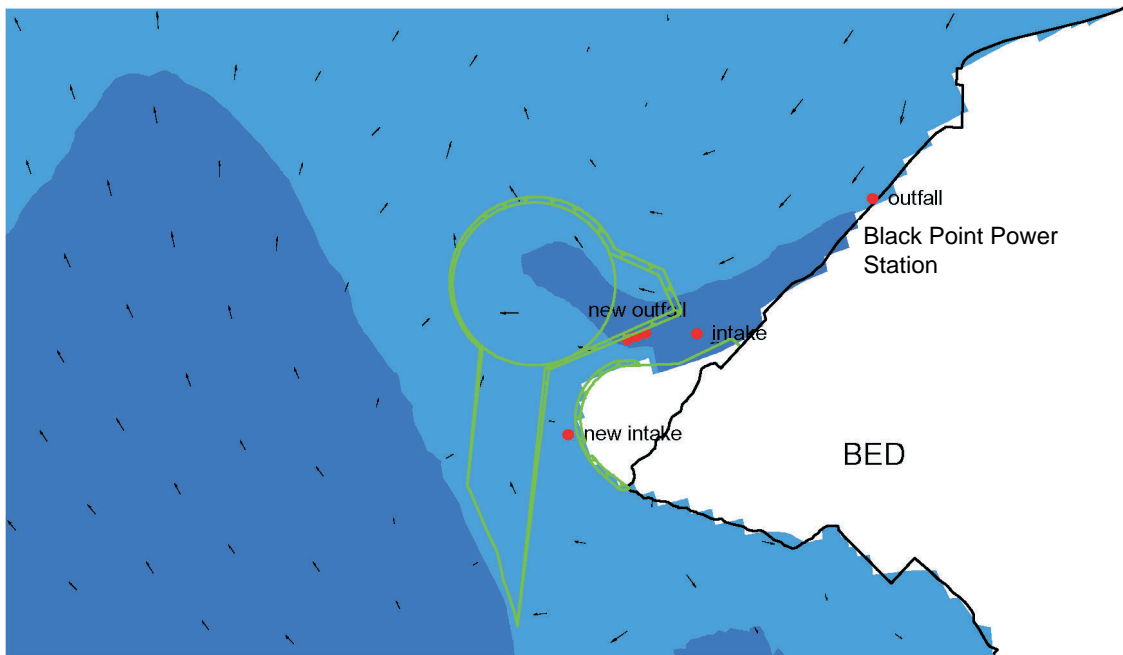
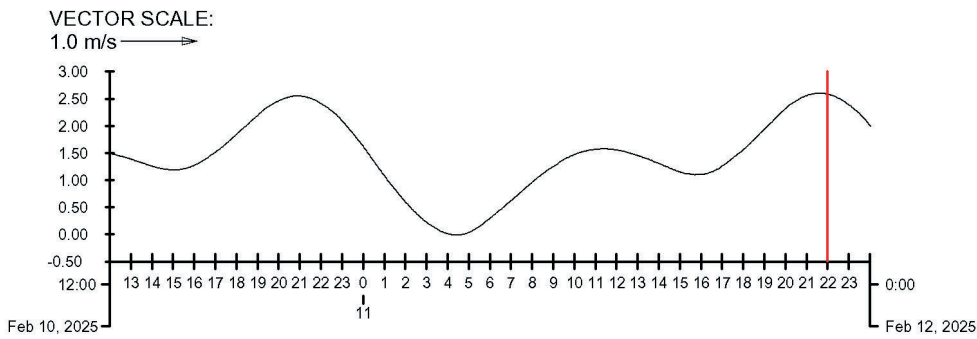
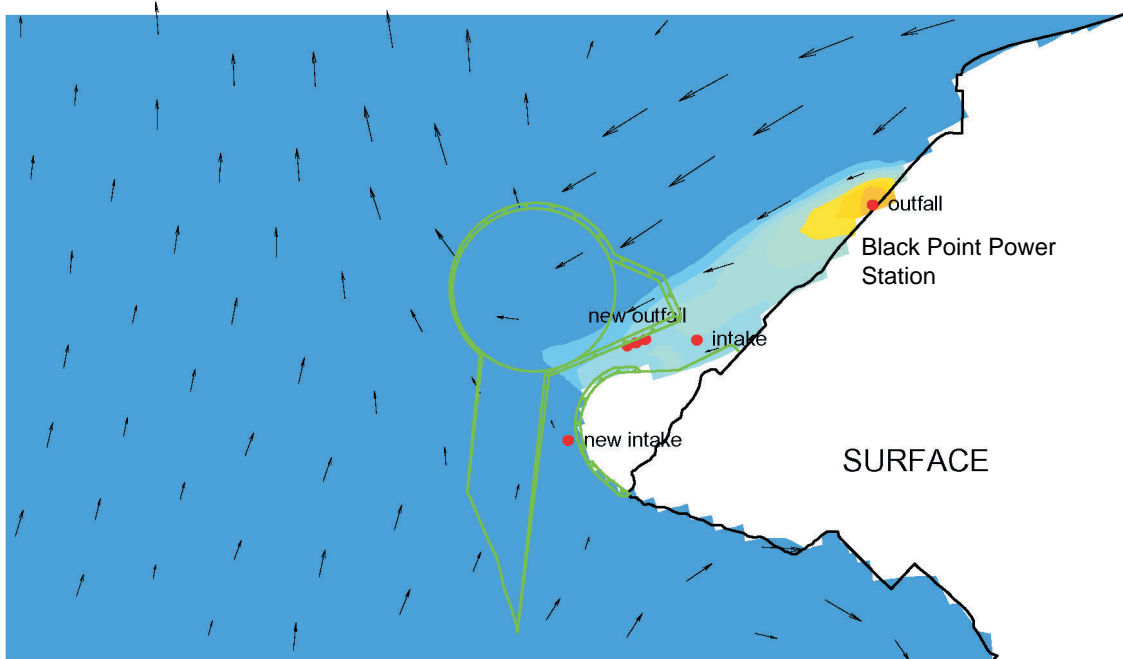
Velocity Vector (m/s) and Temperature (Degree Celsius)
 Dry Season, Mid-flood, Surface (upper) & Bottom (lower)
 Maximum project related discharges, 2011



VECTOR SCALE:
1.0 m/s →

Velocity Vector (m/s) and Temperature (Degree Celsius)
 Dry Season, Low Water, Surface (upper) & Bottom (lower)
 Maximum project related discharges, 2011

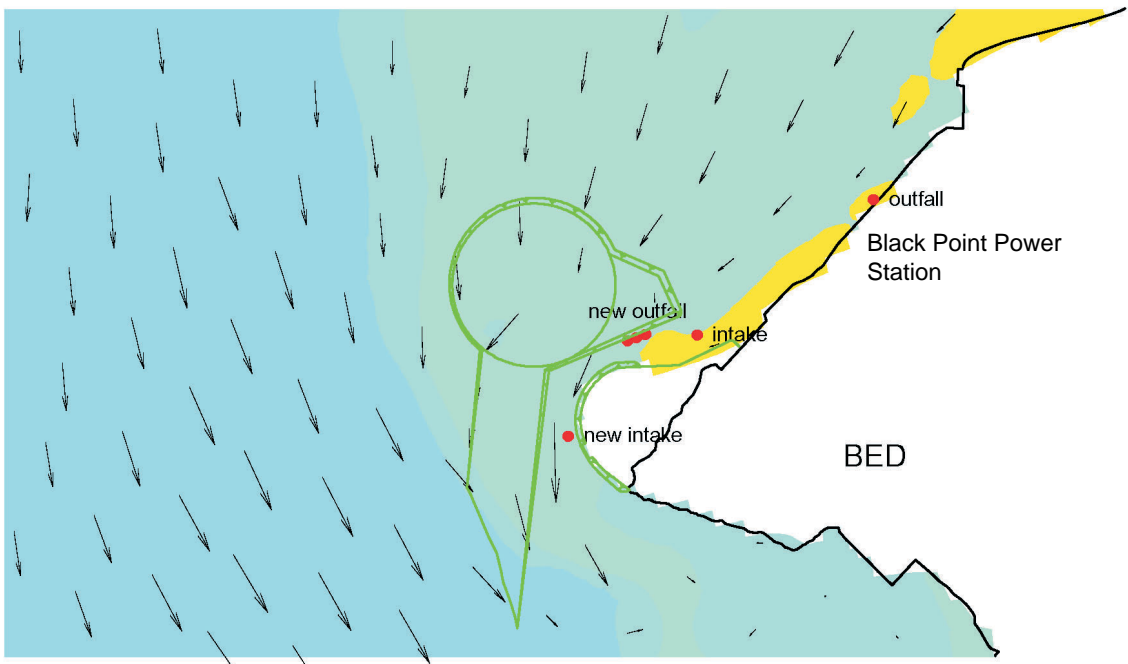
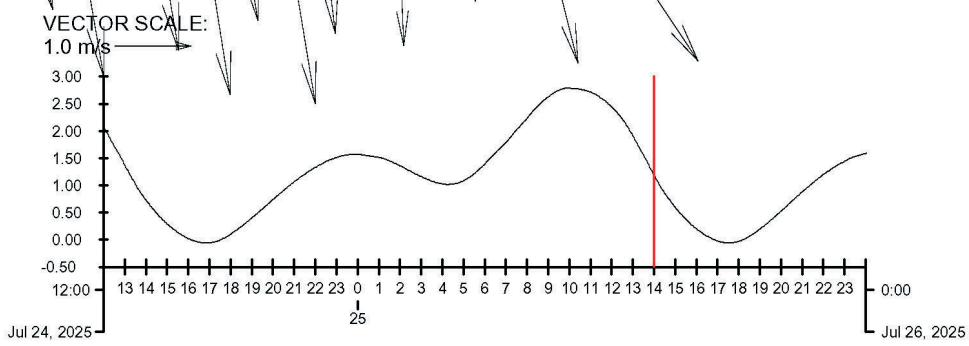
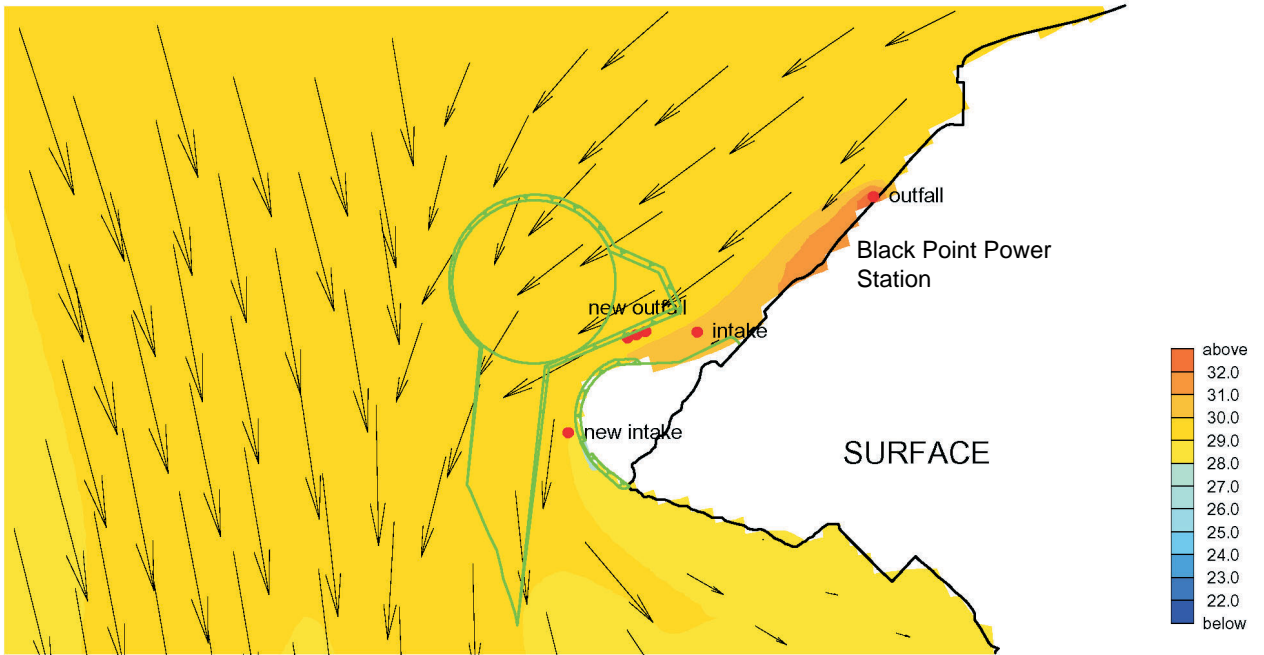
Black Point



VECTOR SCALE:
1.0 m/s →

Velocity Vector (m/s) and Temperature (Degree Celsius)
 Dry Season, High Water, Surface (upper) & Bottom (lower)
 Maximum project related discharges, 2011

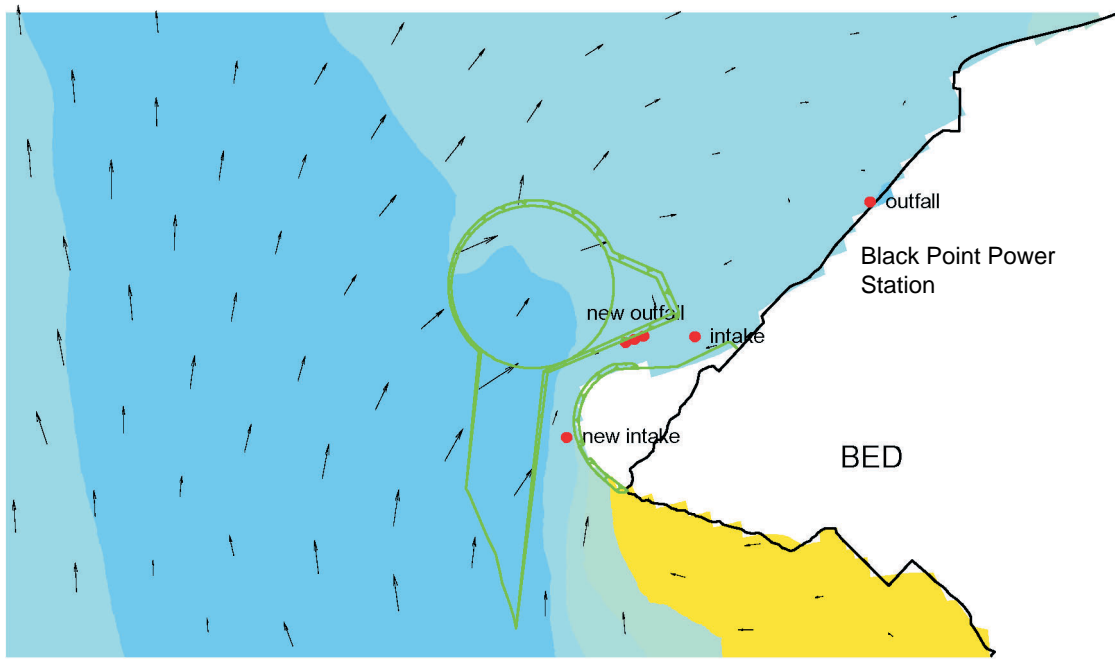
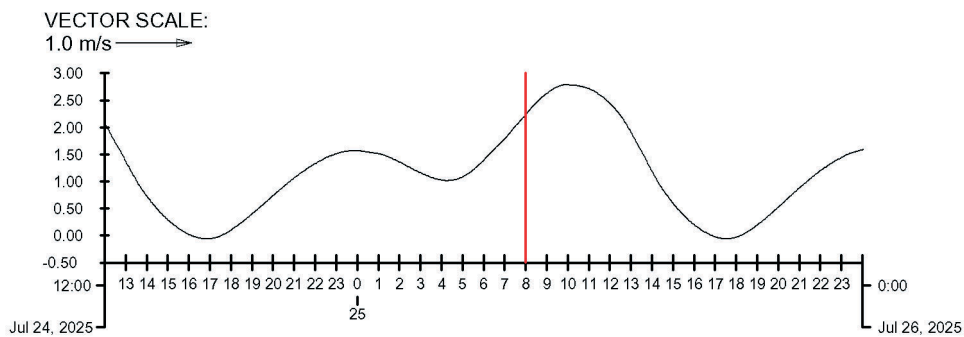
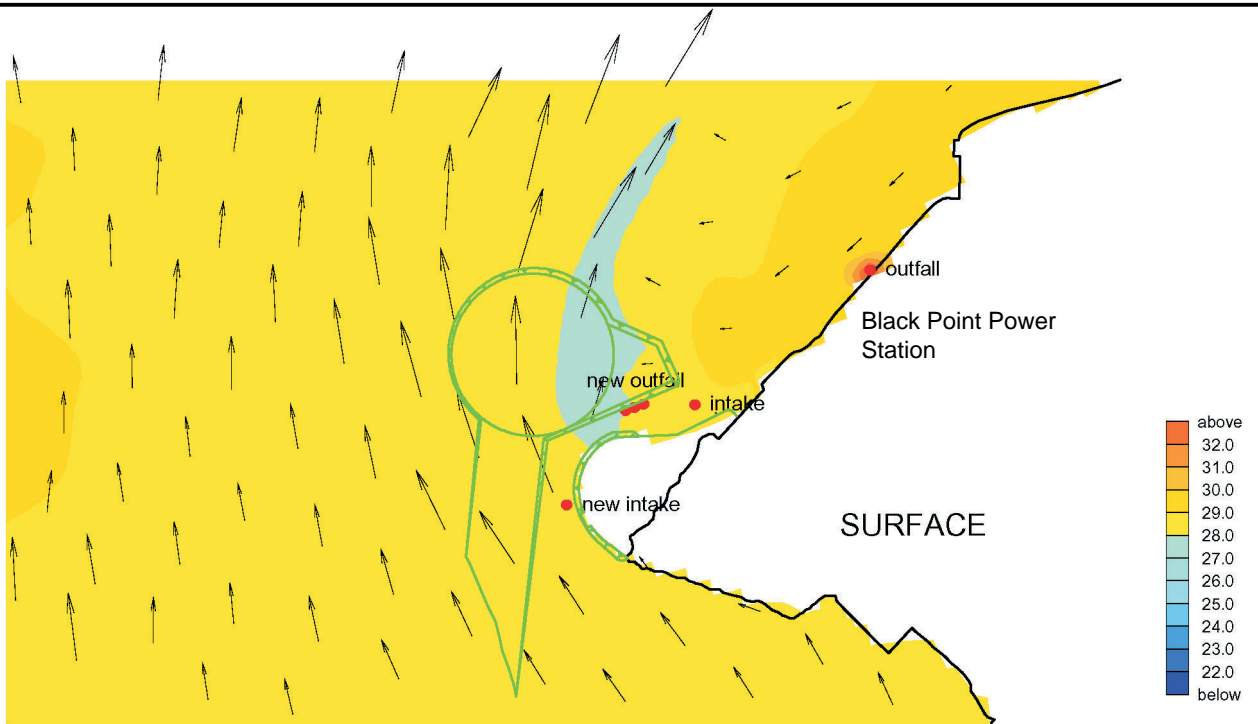
Black Point



VECTOR SCALE:
1.0 m/s

Velocity Vector (m/s) and Temperature (Degree Celsius)
 Wet Season, Mid-ebb, Surface (upper) & Bottom (lower)
 Maximum project related discharges, 2011

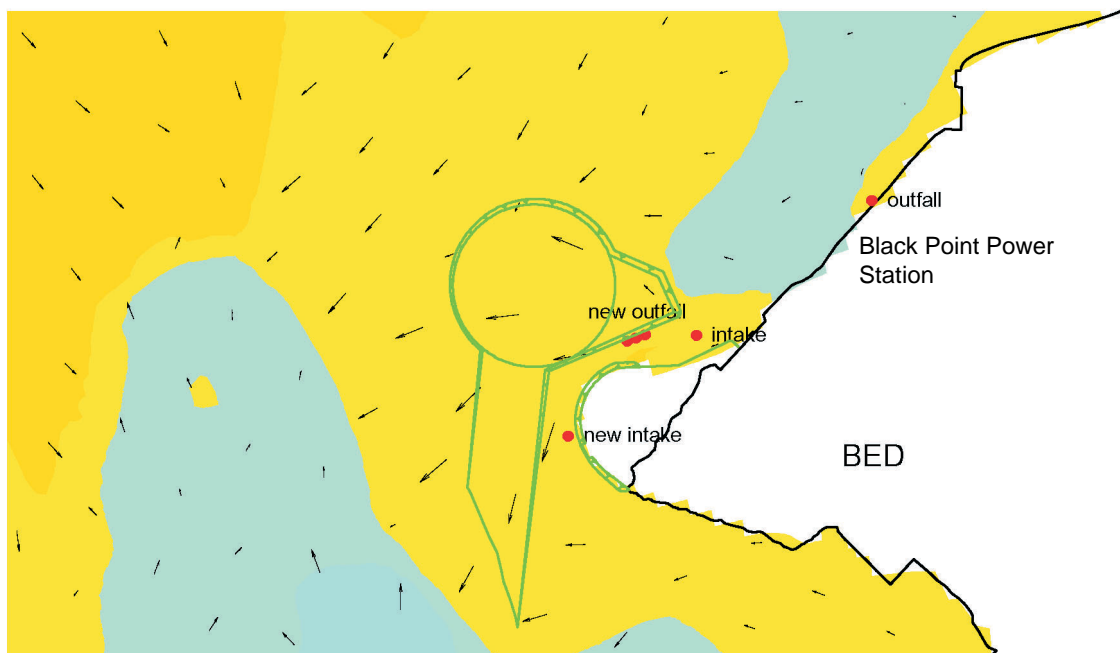
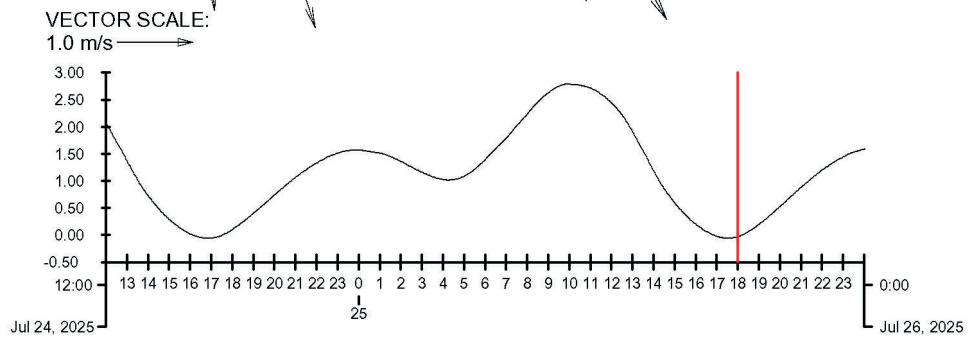
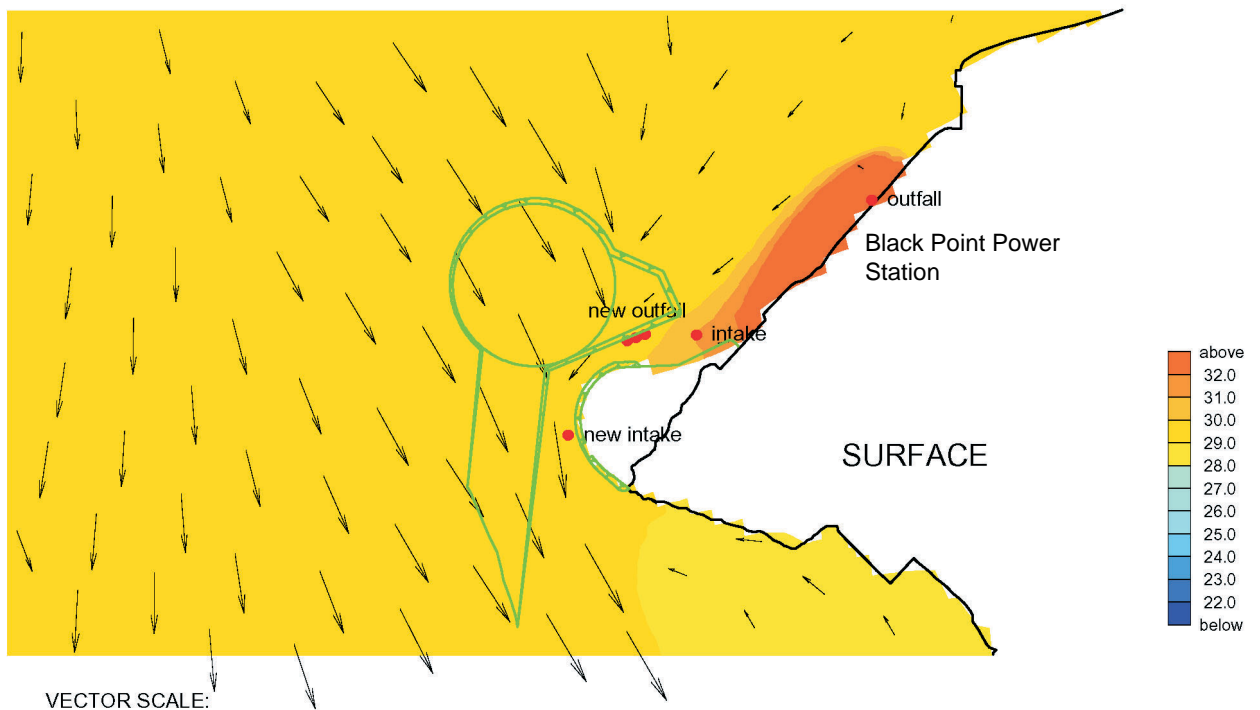
Black Point



VECTOR SCALE:
1.0 m/s →

Velocity Vector (m/s) and Temperature (Degree Celsius)
Wet Season, Mid-flood, Surface (upper) & Bottom (lower)
Maximum project related discharges, 2011

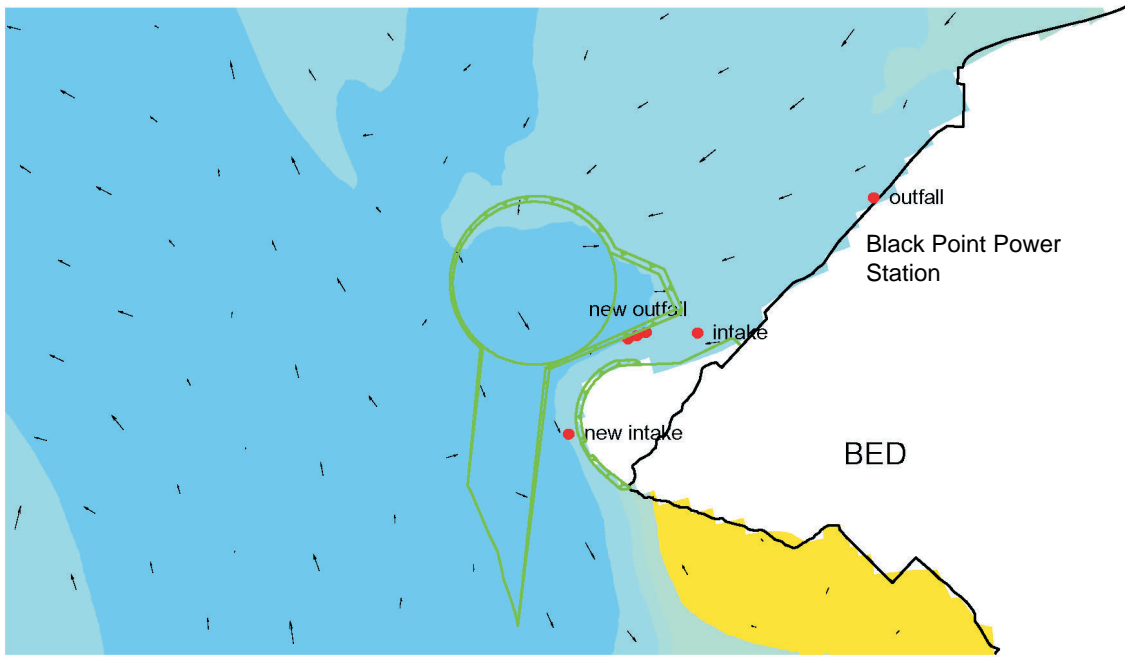
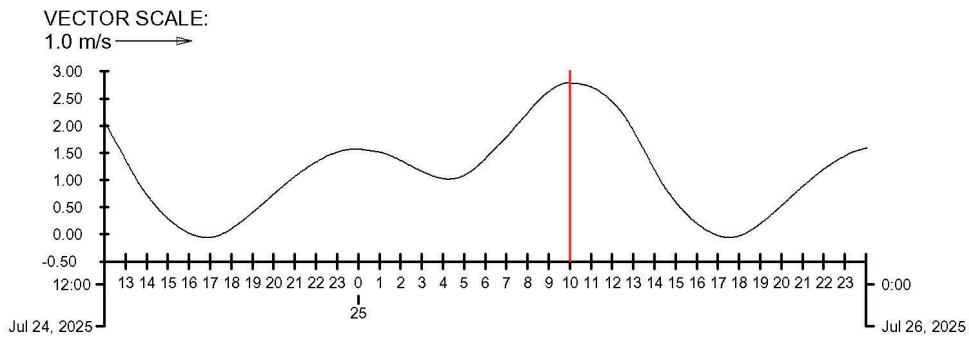
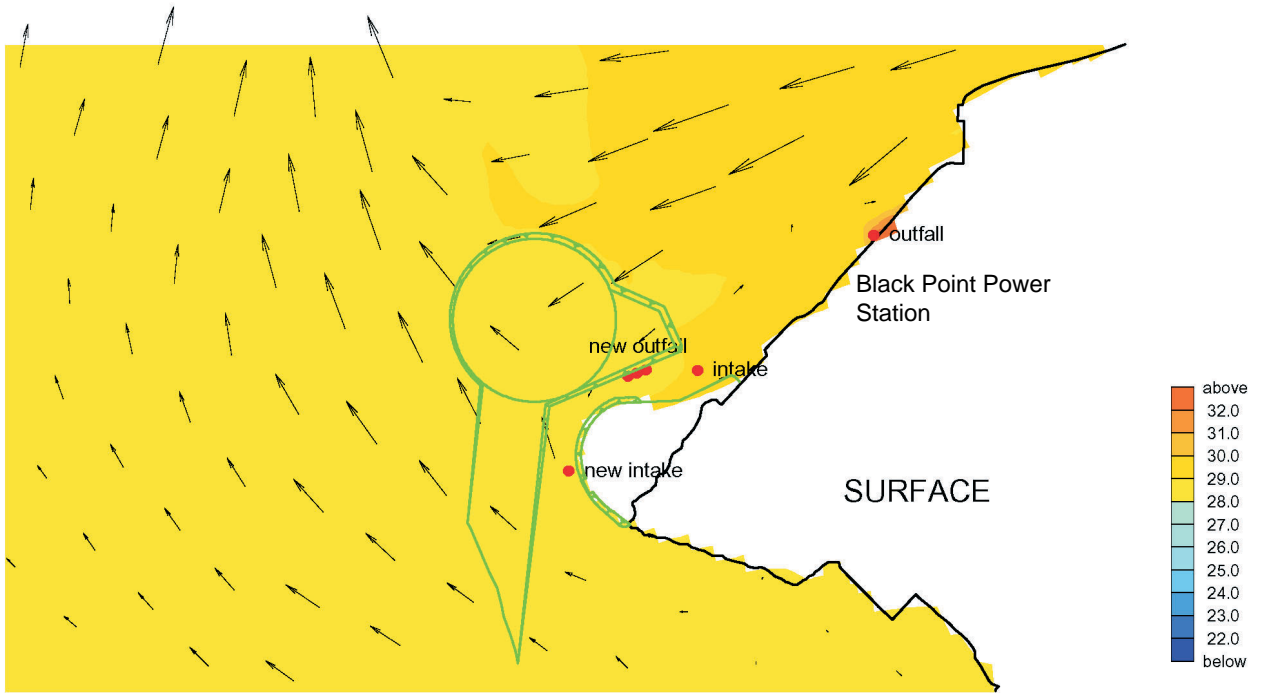
Black Point



VECTOR SCALE:
1.0 m/s →

Velocity Vector (m/s) and Temperature (Degree Celsius)
 Wet Season, Low Water, Surface (upper) & Bottom (lower)
 Maximum project related discharges, 2011

Black Point



VECTOR SCALE: 1.0 m/s →

Velocity Vector (m/s) and Temperature (Degree Celsius)
 Wet Season, High Water, Surface (upper) & Bottom (lower)
 Maximum project related discharges, 2011

Black Point

WL | delft hydraulics

0018180_eia57g

Fig. BP_F08