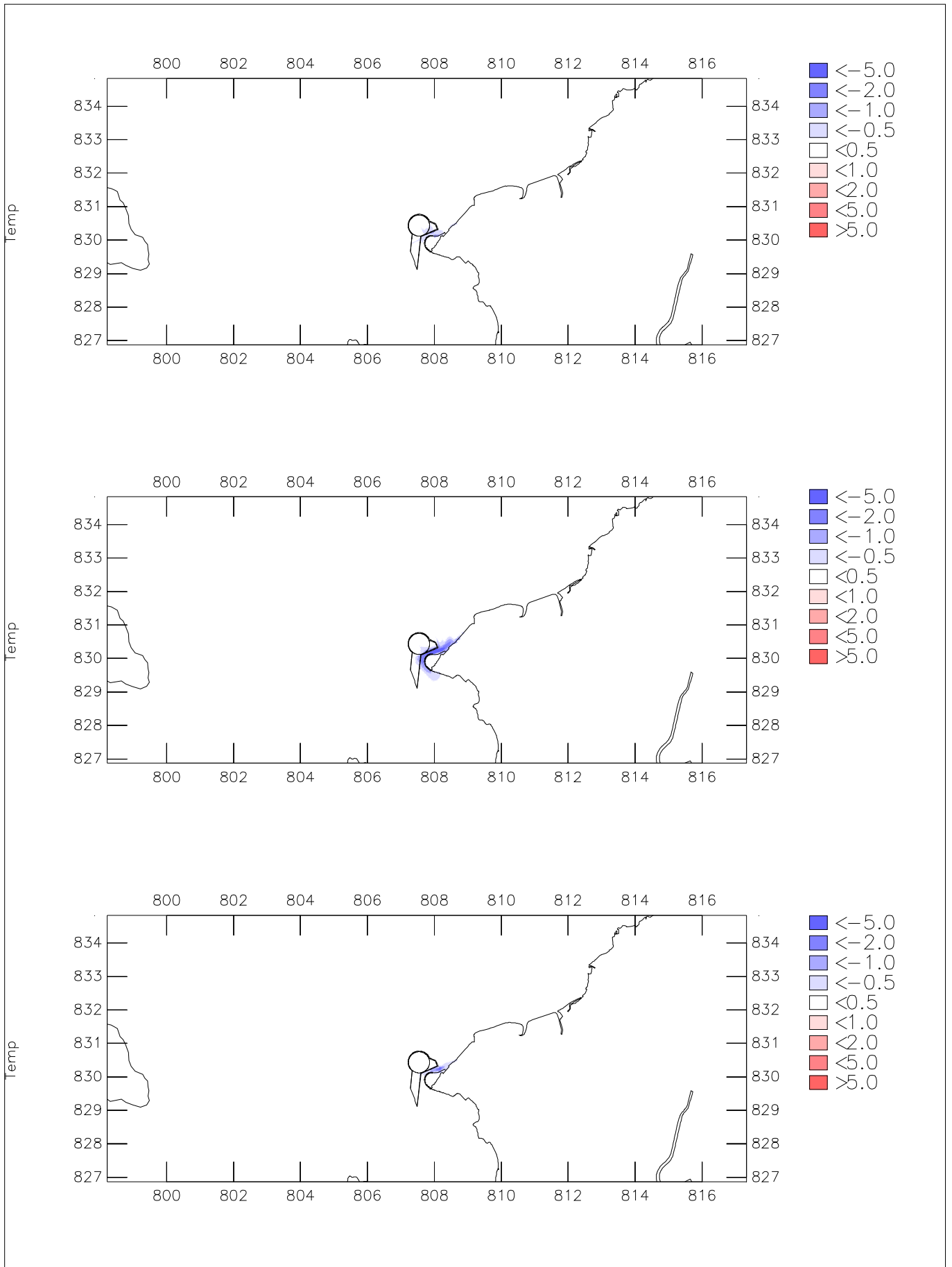


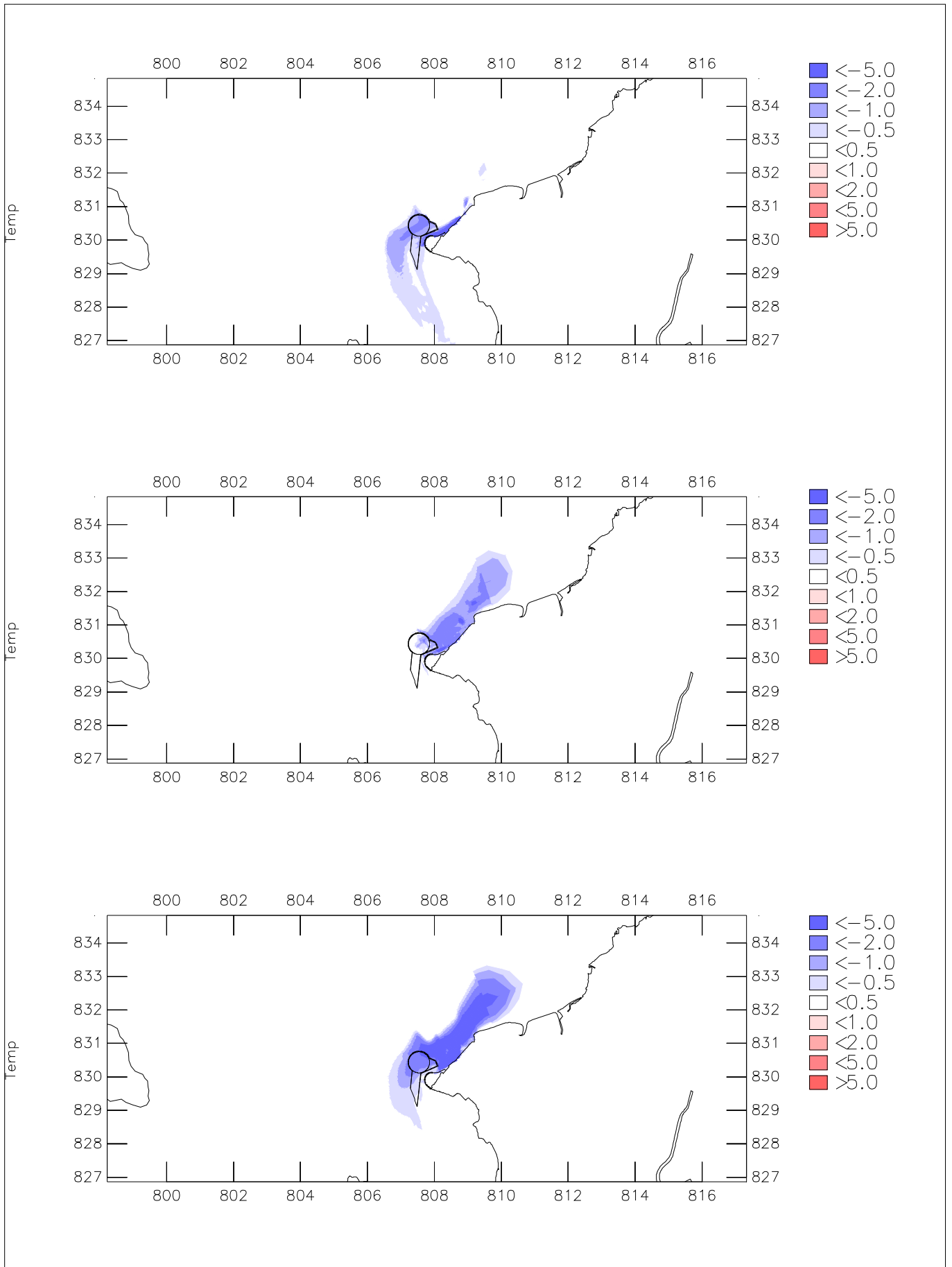
Annex 6G

Operational Phase Model
Results - Cooled Water
Discharges



Maximum Reduction in Temperature relative to baseline (deg.C)
 Maximum discharge: -12.5 deg.C – Black Point
 Surface (upper), Bottom (middle), Depth-average (lower)

Maximum Operational Flow
 Dry Season



Maximum Reduction in Temperature relative to baseline (deg.C)
Maximum discharge: -12.5 deg.C - Black Point
 Surface (upper), Bottom (middle), Depth-average (lower)

Maximum Operational Flow
 Wet Season