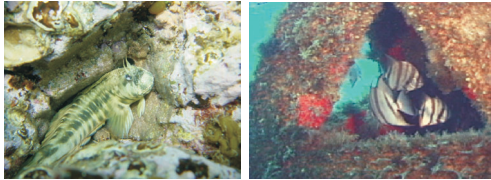


**Marine Conservation**

Explore designation as a Marine Park utilising data collected during the EIA to re-define boundaries considering operational requirements and marine conservation objectives



**Rehabilitation - Marine Systems**



Possible artificial reefs to enhance fish abundance and diversity

**Biodiversity**



Line transect surveys and behavioural investigations for marine mammals

**Legend**

- Pier & Relocated Tin Hau Temple
- Heritage Trail
- Natural Heritage Displays
- Eco Trail
- Existing Reservoir
- Previously Proposed Marine Park



**SOUTH SOKO**  
**Fig 6.1 Indicative**  
**Enhancement Plan 1 of 2**

### Public Access



Existing Pier



Potential Pier

Access will be maintained through a replacement to the existing pier

### Cultural Heritage - Display

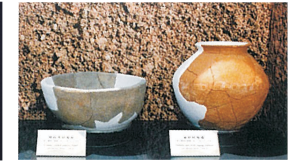


Image from 'Quarterly Bulletin of the Antiquities and Monuments Office, Vol 4 No. 2'

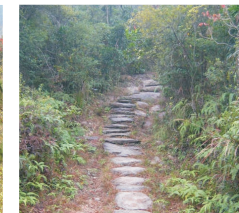
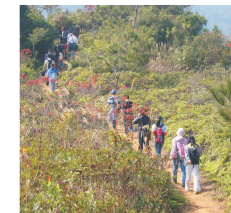
Establish a display of recovered artefacts

### Education



Provide facilities to support education efforts on marine and terrestrial ecology and cultural heritage features of Island

### Recreation



Opportunities for outdoor recreation



### Legend

- | Pier & Relocated Tin Hau Temple
- - - Heritage Trail
- | Natural Heritage Displays
- - - Eco Trail
- Existing Reservoir