

## Existing View

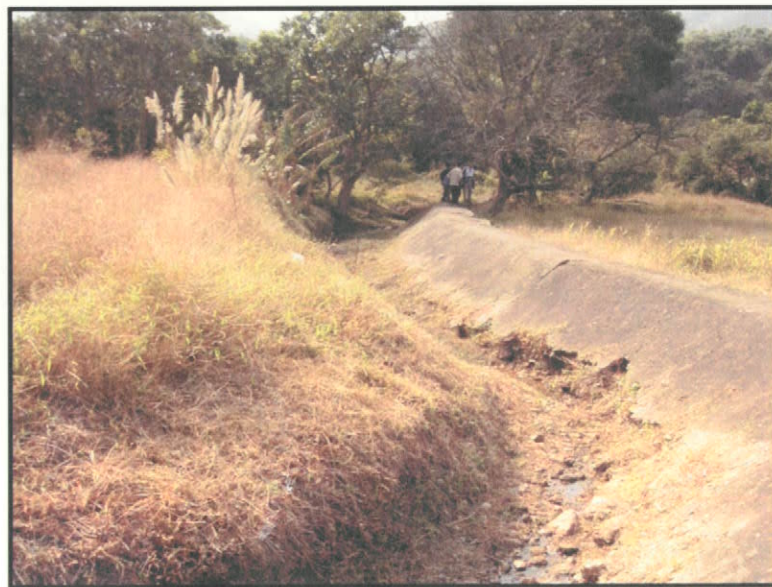


## (LMH 01) VSR 7

Visually Sensitive Receivers - VSR	Description of Visually Sensitive Receivers	Number of Individuals (Many/ Fair/ Few/ Very Few)	Quality of Existing View (Good / Fair / Poor)	Minimum Distance between VSRs & Impact Source	Degree of Visibility (Full /Partial /Glimpse)	Frequency of View (Very Frequent / Frequent / Occasional / Rare)	Sensitivity to Change (High/Medium /Low)
VSR 7	Residents near the temple @ Lin Ma Hang (Low Rise Housing Development)	Fair	Good	Approx. 35m	Partial	Frequent	Medium

\*Refer to Figure No. 8.4B : Location of Visual Sensitive Receivers & Zone of Visual Influence Plan

## Existing View ( view during dry season )



Title :

Agreement No.CE 6 / 2002 (DS)  
Drainage Improvement in Northern New Territories Package C Investigation, Design and Construction  
**LMH 01 -Visually Sensitive Receivers - VSR 07**

Scale: Not to scale

Figure No. 8.4B-iv

Date : Sept.2006

 **BLACK & VEATCH**  
Building a world of difference  
ENERGY WATER INFORMATION GOVERNMENT