

# LANDSCAPE IMPACT ASSESSMENT

(MUP 03 )

(MUP 04A/B)

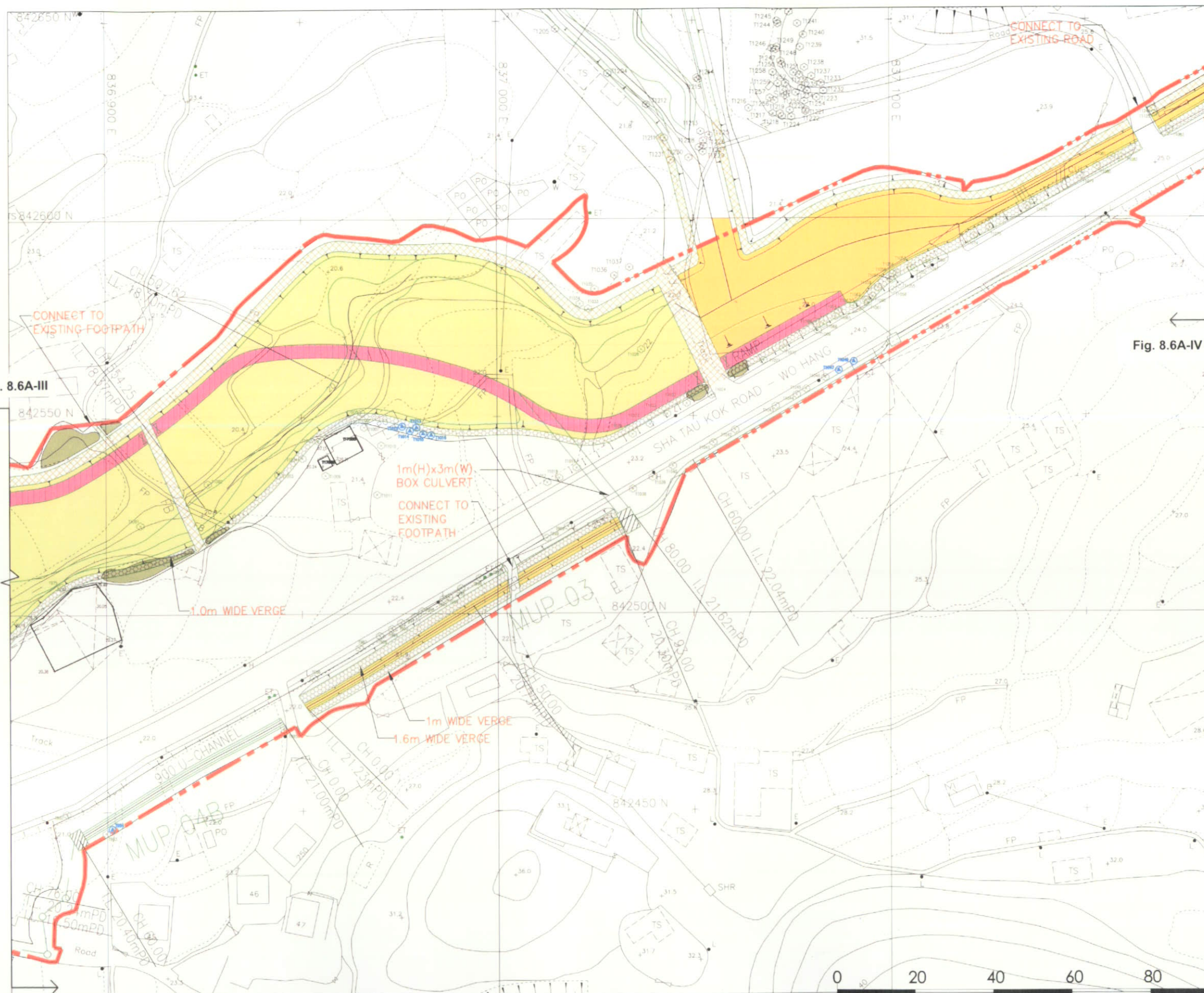
(MUP 05)

(SHEET 4 OF 5)

Fig. 8.6A-V

Fig. 8.6A-IV

Fig. 8.6A-III



## LEGEND: (proposed mitigation)

- (LMM 1)  
LANDSCAPE MITIGATION MEASURE 1:  
Gabions / Gabion Mattress for Riparian  
Vegetation
- (LMM 2)  
LANDSCAPE MITIGATION MEASURE 2:  
Existing natural river bed to be retained or  
widened, using Natural Substrate  
(example: rip-rap bedding) &  
Existing natural river bank to be retained or  
reinforced using Gabions / Gabion Mattress  
for Riparian Vegetation.  
(refer different type of two-stage  
channel detail)
- (LMM 3)  
LANDSCAPE MITIGATION MEASURE 3:  
Compensatory tree planting along  
channel side
- (LMM 4)  
LANDSCAPE MITIGATION MEASURE 4:  
Maintenance access ramps with grasscrete  
finish and planting with channel bed /  
toe zone vegetation
- (LMM 5)  
LANDSCAPE MITIGATION MEASURE 5:  
Mitigation planting along embankments

## LEGEND: (Hardscape)

- FOOTPATH
- RAMP
- VERGE
- SITE LIMIT

## LEGEND: (Existing Tree)

- RETAINED TREE  
(WITH APPROPRIATE TAG)
- TRANSPLANTED TREE  
(WITH APPROPRIATE TAG)

AGREEMENT NO.

CE6 / 2002 (DS)

PROJECT TITLE :

DRAINAGE IMPROVEMENT IN NORTHERN  
NEW TERRITORIES PACKAGE C  
INVESTIGATION, DESIGN AND  
CONSTRUCTION

ENGINEERING CONSULTANT



BLACK & VEATCH HONG KONG LIMITED  
博威工程顧問有限公司

THE GOVERNMENT OF THE  
HONG KONG  
SPECIAL ADMINISTRATIVE REGION  
DRAINAGE SERVICES DEPARTMENT

Figure Title:

LANDSCAPE MITIGATION PROPOSAL  
MUP 03 : 04A/B, 05

Drawn by : JS Checked by : Carsten Hultiche

Scale: (A1) 1:500 (A3) 1:1000 Date : 09MAY2006

File Name : D:\LANDSCAPE MITIGATION PROPOSAL\WUP

Figure No : 8.6A-IV Revision : 00

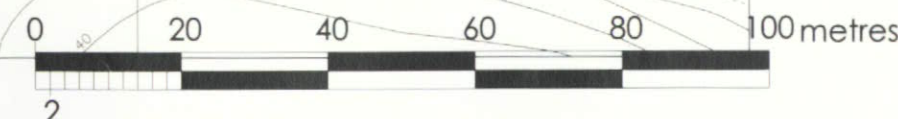


Fig. 8.6A-IV